

NEW SYNONYMIES AND LECTOTYPE DESIGNATIONS IN THE NEOTROPICAL TRIBES NYCTELIINI, PRAOCINI, AND SCOTOBIINI (COLEOPTERA: TENEBRIONIDAE)

GUSTAVO E. FLORES

Laboratorio de Entomología, Instituto Argentino de Investigaciones de las Zonas Áridas (IADIZA, CRICYT), Casilla de Correo 507, 5500 Mendoza, Argentina
e-mail: gflores@lab.cricyt.edu.ar

Abstract.— Seven new synonymies within the genus *Praocis* Eschscholtz, 1829 (Praocini) are proposed: *P. audouini* Solier, 1840 with *P. sanguinolenta* Gay et Solier, 1840; *P. rufitarsis* Gay et Solier, 1840 with *P. tibialis* Gay et Solier, 1840; *P. submetallica* Guérin-Méneville, 1834 with *P. subaenea* Erichson, 1834; *P. chevrolati coquimboana* Kaszab, 1969 with *P. chevrolati subcostata* Gay et Solier, 1840; *P. convexa* Germain, 1855 with *P. pleuroptera* Gay et Solier, 1840; *P. denseciliata* Fairmaire, 1883 with *P. striolicollis* Fairmaire, 1883; and *P. compacta* Fairmaire, 1883 with *P. inermis* Burmeister, 1875. Two new synonymies within the genus *Nyctelia* Latreille, 1825 (Nycteliini) are proposed: *N. planicauda* Fairmaire, 1905 with *N. laticauda* Burmeister, 1877 and *N. bifoveata* Fairmaire, 1905 with *N. vageimpressa* Fairmaire, 1904. *Praocis elliptica* Philippi et Philippi, 1864 stat. rev., placed prior to this study as a synonym of *P. submetallica*, is reinstated as a valid name. *Praocis concinna* Burmeister, 1875 is rediscovered and assigned to the subgenus *Postpraocis* Kulzer. Lectotypes are designated for 66 nominal species of the Neotropical tribes Nycteliini, Praocini, and Scotobiini (Coleoptera: Tenebrionidae), including all the species treated in the synonymies.



Key words.— Coleoptera, Tenebrionidae, Nycteliini, Praocini, Scotobiini, new synonymies, lectotype designations.

INTRODUCTION

In the scope of the research project: “Design of a reserve network for protection of biodiversity in Southern South America using predictive distribution models with hyperdiverse taxa” I studied the types of many species of Southern South America in old collections as to make a good determination of hundreds of specimens deposited in Argentinean and Chilean collections. For this reason I visited the museums of Paris (France) in 2005, Buenos Aires and La Plata (Argentina) and Santiago (Chile) in 2006 and found some unexpected synonyms. These trips allowed me to study the

syntypes of Antoine Solier, Félix Guérin-Méneville and Léon Fairmaire in Paris, of Hermann Burmeister and Léon Fairmaire in Buenos Aires, of Carlos Berg in La Plata, and of Philibert Germain and Rudolf Philippi and Friedrich Philippi in Santiago museums. Additional syntypes of Johann Eschscholtz and Wilhelm Erichson were borrowed by the museum of Berlin and types of Zoltán Kaszab by the Field Museum (Chicago, USA).

The faunistic project mentioned above includes several species belonging to the Neotropical tribes Nycteliini, Praocini (Pimeliinae) and Scotobiini (Tenebrioninae) which are dominant among the tenebrionid fauna in the Patagonian steppes (Kuschel 1969).

All the species of these tribes are apterous, having a reduced geographical distribution. Kulzer in his revisions of the Scotobiini (Kulzer 1955), Praocini (Kulzer 1958) and *Nyctelia* Latreille (Kulzer 1963) did not see the types of several species described by Burmeister (1875, 1877) and Fairmaire (1904, 1905) that are deposited in the Buenos Aires museum. For this reason he could not identify some species of these tribes and this genus, leaving these as unknown or *incertae sedis*.

The objectives of this paper are to present nine new synonyms and designate lectotypes for 66 nominal species of South American Tenebrionidae in order to provide nomenclatural stability to the taxa. These lectotypes include also species of the genera *Psectrascelis* Solier and *Entomoderes* Solier (Nycteliini) described by Fairmaire (1904, 1905) and deposited in the Buenos Aires museum.

MATERIAL AND METHODS

The type material studied is deposited in the following collections (I follow Arnett *et al.* 1993 where possible for collection codens; curators' names are given in parentheses):

- FMNH – Field Museum of Natural History, Chicago, USA (Alfred Newton, Margaret Thayer);
- MACN – Museo Argentino de Ciencias Naturales Bernardino Rivadavia, Buenos Aires, Argentina (Arturo Roig-Alsina);
- MLPA – Museo de La Plata, La Plata, Argentina (Norma B. Díaz);
- MNHN – Muséum National d'Histoire Naturelle, Paris, France (Claude Girard);
- MNHUB – Museum für Naturkunde der Humboldt Universität, Berlin, Germany (Manfred Uhlig, Bernd Jaeger);
- MNNC – Museo Nacional de Historia Natural, Santiago, Chile (Mario Elgueta).

Additional material was studied from the Instituto Argentino de Investigaciones de las Zonas Áridas (IADIZA), Mendoza, Argentina.

Syntypes of Solier and Guérin-Méneville in MNHN were previously identified by Claude Girard. For the types of Fairmaire, one week before I went to Paris I met Julio Ferrer in Lyon, who taught me to recognize Fairmaire's handwriting. Some of the types of Fairmaire in MNHN were kept in the arranged tenebrionid collection and others in the miscellaneous boxes of the old collection of Fairmaire.

Syntypes of Burmeister in MACN were previously identified by Axel Bachmann, and types of Fairmaire in MACN had been previously identified by Carlos Bruch (ex Bruch collection, now deposited in MACN). For all these Fairmaire's types, Bruch folded

and hid each Fairmaire's label below his own label; I unfolded all the original labels of Fairmaire and glued them on white cardboard, so now they are easily visible.

One syntype of Burmeister and types of Berg were located in MLPA which has been previously identified by Carlos Berg and deposited in MLPA via ex collection Berg.

Syntypes of Germain in MNNC were previously identified by Ariel Camousseight (1980). Types of Philippi and Philippi in MNNC were identified by Mario Elgueta and myself by examining together the material of the general collection of that museum and recognizing Philippi's handwriting. Syntypes of Eschscholtz and Erichson had been previously identified by the curators of the Berlin museum.

The genus *Praocis* Eschscholtz was established on the basis of two species (Eschscholtz 1829). Later, Solier (1840) described 20 species of *Praocis*. Most of these new species were collected by Claudio Gay in Chile, who sent Solier that material for study. In the first of these descriptions, *Praocis costata* (Solier 1840: 222), Solier assigned it to Gay et Solier and stated: "Je ne donne pas la description détaillée de cette espèce, pour ne pas anticiper sur le travail inédit que M. Gay et moi devons publier sur les Coléopterères du Chili, et j'observerai la même réserve pour les diverses espèces de ce voyage". In fact, for 17 of a total of 20 new species of *Praocis* described in that monography of Praocini, the descriptions were short but valid and assigned to Gay et Solier. These authors never published the intended paper on Gay's trip, and posterior authors (Gebien 1910, 1938; Kulzer 1958) attributed all these species to Solier alone. According to the interpretation of Article 50.1.1 of the International Code of Zoological Nomenclature (ICZN 1999), the authors of these species are Gay et Solier, as Solier indicated. In such cases I designated lectotypes assigning the species to both authors, and in References I cited Solier (1840).

This study is presented in two parts. The first deals with the new synonymies with a comment on each on the features studied here or on misidentified previous material; all these synonymies include lectotype designations. The second part is a list of lectotype designations of several species, in the cases where lectotypes are designated on the basis of only one specimen I included additional notes; this part also includes comments on some cases of rediscovered species or consigns the accurate geographic distribution of other species. In both parts, i.e. new synonymies and lectotype designations, species are arranged by tribe and genus; for the genus *Praocis* I followed the subgeneric classification of Kulzer (1958). Exact label data are cited for the type material, where brackets delimit the text of individual labels.

NEW SYNONYMIES

Tribe Praocini

Genus *Praocis* Eschscholtz, 1829Subgenus *Praocis* Eschscholtz, 1829*Praocis sanguinolenta* Gay et Solier*Praocis sanguinolenta* Gay et Solier, 1840: 223.*Praocis audouini* Solier, 1840: 222 **syn. nov.**

Type series of *Praocis sanguinolenta* (MNHN). Two specimens, with labels: [sangui-/nolenta] [*Praocis/ sanguinolentus/* Sol./ Coquimbo] [*P. sanguinolentus/* Gay et Sol./ Coquimbo] [Type] [*Praocis/ sanguinolenta* Sol./ Type de Solier/ Col. Marseul/ C. Girard det. 1975]. Of both, the individual with additional label: [Lectotypus/ *Praocis sanguinolenta/* Gay et Solier, 1840/ Des. G. Flores 2005] is here designated lectotype because is in better condition, the remaining specimen as paralectotype, plus two labels: [sanguinolenta Sol. 223, 4 Chili] below the label [Type] and [Paralectotypus/ *Praocis sanguinolenta/* Gay et Solier, 1840/ Des. G. Flores 2005].

Type series of *Praocis audouini* (MNHN). Four specimens, with labels: [Museum Paris/ Chili/ Gaudichaud 1833] [*Praocis audouini/* Sol.] [Type]. Of them, the individual with additional label: [Lectotypus/ *Praocis audouini/* Solier, 1840/ Des. G. Flores 2005] is the lectotype hereby designated because is in better condition, the remaining specimens as paralectotypes with additional label: [Paralectotypus/ *Praocis audouini/* Solier, 1840/ Des. G. Flores 2005].

Comments. As Solier (1840) stated, he described *Praocis audouini* from the collection of MNHN, not from his own collection. I found these type specimens of *Praocis audouini* in the miscellaneous boxes of the old collection in MNHN, not in the arranged tenebrionid collection containing the types of Solier via ex coll. Marseul. Kulzer (1958) probably did not see these type specimens of *Praocis audouini*, because in his key for *Praocis* (*Praocis*), in option 7 (8), he separated *P. audouini* from *P. quadrisulcata* Germain, 1856 and from *P. sanguinolenta* on the basis of the two grooves with short setae on each elytron for *P. audouini* and four-five grooves with short setae for *P. quadrisulcata* and *P. sanguinolenta*. My examination of the type specimens of *Praocis audouini* agree with the original description by Solier (1840) in having four grooves on each elytron, like in *P. sanguinolenta*.

Praocis tibialis Gay et Solier*Praocis tibialis* Gay et Solier, 1840: 225.*Praocis rufitarsis* Gay et Solier, 1840: 227 **syn. nov.**

Type series of *Praocis tibialis* (MNHN). Two specimens, with labels: [*tibialis*] [*Praocis/ tibialis/* Sol./ Illapel] [*P. tibialis* G. S./ Sta. Rosa Illapel] [Type] [*Praocis/ tibialis* Solier/ Type de Solier/ Col. Marseul/ C. Girard det. 1975]. Of them, the individual with additional label: [Lectotypus/ *Praocis tibialis/* Gay et Solier, 1840/ Des. G. Flores 2005] is here designated lectotype because is in better condition, the remaining specimen as paralectotype, plus two labels: [*tibialis* Sol. 225, 8 Coquimbo] below the label [Type] and [Paralectotypus/ *Praocis tibialis/* Gay et Solier, 1840/ Des. G. Flores 2005].

One specimen: [*Praocis/ aenipennis/* Germain/ Chili] [Chili/ Germain] [*Praocis/ aenipennis/* P. G (handwritten by Germain)] [*Praocis/ tibialis* Sol. (= *aenipennis* Germ.)/ det. H. Kulzer 1957] (MNHN).

Notes. Kulzer (1958: 24) established the following synonymy: *Praocis tibialis* Solier, 1840 (= *P. aenipennis* Germain, 1855) and stated that the type of *P. aenipennis* is in the MNHC. This specimen coincides with the description by Germain (1855), and because of its having the Germain's handwriting it is without doubt a Germain's type of *Praocis aenipennis*. The type of *Praocis aenipennis* is not in the MNHC (Camousseight 1980). After examining both type specimens of *Praocis tibialis* and *P. aenipennis* I agree with Kulzer (1958) in this synonymy and for this reason I choose *P. tibialis* as a valid name of this species instead of *P. rufitarsis*.

Type series of *Praocis rufitarsis* (MNHN). Four specimens, with labels: [*rufitarsis*] [*Praocis/ rufitarsis/* Sol./ Illapel] [Illapel/ Gay] [Type] [*Praocis/ rufitarsis* Sol./ Type de Solier/ Col. Marseul/ C. Girard det. 1975]. Of them, the individual with additional label: [Lectotypus/ *Praocis rufitarsis/* Gay et Solier, 1840/ Des. G. Flores 2005] is the lectotype hereby designated because is in better condition, the remaining specimens as paralectotypes, one plus a label: [*P. rufitarsis* Gay/ et Sol. Illapel] and one of the others plus two labels: [Sa Rosa/ Gay] and [*P. rufitarsis* Sol./ Illapel]; all of them with additional label: [Paralectotypus/ *Praocis rufitarsis/* Gay et Solier, 1840/ Des. G. Flores 2005].

Comments. Solier (1840) described these two species from Illapel, Chile. Kulzer (1958) in his key for *Praocis* (*Praocis*), in option 25 (32), separated early *P. rufitarsis* (together with other three species) from *P. tibialis* (together with other two species) on the basis of elytra vaulted on the sides and lateral margin not visible from above for *P. rufitarsis* (option 25 (32)), and elytra with declivity on the sides and lateral margin visible from above for *P. tibialis* (option 32 (25)). My examination of the type specimens of both nominal species as well as the specimens determined by Kulzer and me as *Praocis tibialis* and *P. rufitarsis* housed at FMNH, MNHC and IADIZA (n = 30) led to

me to conclude that these specimens are conspecific, with the types of *P. tibialis* males (elytra with declivity) and of *P. rufitarsis* females (elytra vaulted) being of the same species. I dissected partially all of these non type specimens and confirmed that this character stated by Kulzer (1958) in his key for separate species is a case of sexual dimorphism in *Praocis tibialis*, which I also observed in *P. aenea* Gay et Solier.

Praocis subaenea Erichson

Praocis subaenea Erichson, 1834: 248 (March 12)

Praocis submetallica Guérin-Ménéville, 1834: 9 (June) *syn. nov.*

Type series of Praocis subaenea (MNHUB).

Three specimens, with labels: [Hist.-Coll. (Coleoptera)/ Nr 14891/ *Praocis subaenea* Erichs./ Chili, Meyer/ Zool. Mus. Berlin] [Syntypus/ *Praocis subaenea*/ Erichson, 1834/ labelled by the MNHUB 2005]. Of them, I choose the specimen with additional labels: [Type] [14891] [Sex: male/ Det. G. Flores] above of the other labels and [Lectotypus/ *Praocis subaenea*/ Erichson, 1834/ Des. G. Flores 2005] below of all labels as lectotype because is the male in better condition; the remaining specimens as paralectotypes, one male and the other not sexed, with additional label: [Paralectotypus/ *Praocis subaenea*/ Erichson, 1834/ Des. G. Flores 2005].

Type series of Praocis submetallica (MNHN).

One specimen, with labels: [Type] [Type/ Guérin-Men.] [Ex-Museo/ Guérin-Menev.] [*Praocis/ submetallica*/ Chili Guer.] [Lectotypus/ *Praocis submetallica*/ Guérin-Meneville, 1834/ Des. G. Flores 2005] is the lectotype by present designation.

Note. The measurements in the original description are given as a range, suggesting several specimens. This specimen agrees with the description by Guérin-Ménéville (1834).

Comments. At the moment of studying at the MNHN the type of *P. submetallica* I had in hand the three syntypes of *P. subaenea* from the MNHUB, which had been brought in loan to Lyon by Wolfgang Schawaller. For this reason I could compare the type material of both species side-to-side and found this unexpected synonymy.

In the box of *Praocis* of the MNHN, in the line of *P. submetallica* there are two specimens: the lectotype of *P. submetallica* of Guérin-Ménéville and another non-type specimen labelled by Kulzer as *P. submetallica* but belonging to another species of *Praocis*. Kulzer (1958), in his key for *Praocis* (*Praocis*, in the option 20 (21), separated *P. subaenea* and *P. submetallica*, stating for *P. subaenea* elytra with dorsal surface wrinkled-coriaceous and prosternum not produced backwards and for *P. submetallica*

elytra with dorsal surface smooth and prosternum produced backwards. For identifying *Praocis subaenea*, Kulzer used the syntypes of Erichson in the MNHUB, but for *P. submetallica* he probably used the non-type specimen at the MNHN, which he labelled *Praocis submetallica* but belongs to *P. elliptica* Philippi et Philippi. The types of *Praocis subaenea* and *P. submetallica* have pronotum with large punctures, elytra with dorsal surface wrinkled-coriaceous, lacking carinae, with conspicuous golden velvet-like pubescence arranged in a lateral band over the lateral margin and short sparse setae on whole surface, and prosternum not produced backwards. By the other hand, the type of *Praocis elliptica* here examined (see below) has pronotum with small fine punctures, elytra with dorsal surface smooth, with a carina more distant from the suture than lateral margin, with conspicuous golden velvet-like pubescence arranged in a lateral band over the lateral margin, dorsal surface glabrous, and prosternum produced backwards. All this features are constant in the abundant material of these species examined belonging to FMNH, MNNC and IADIZA.

Praocis elliptica Philippi et Philippi

Praocis elliptica Philippi et Philippi, 1864: 342. Revalidated or. star. rev.

Praocis angustata Philippi et Philippi, 1864: 341, *syn. by* Kulzer (1958).

Type series of Praocis elliptica (MNNC). One specimen, with labels: [*Praocis/ elliptica*/ (Phil.) (handwritten by Philippi)] [Lectotypus/ *Praocis elliptica*/ Philippi & Philippi, 1864/ Des. G. Flores 2006] is the lectotype hereby designated.

Notes. In the original description Philippi & Philippi (1864) stated that they used four specimens for the description. This specimen agrees with the description by Philippi & Philippi (1864).

Type series of Praocis angustata (MNNC). One specimen, with labels: [*Praocis/ angustata*/ (Phil.) (handwritten by Philippi)] [Lectotypus/ *Praocis angustata*/ Philippi & Philippi, 1864/ Des. G. Flores 2006] is the lectotype by present designation.

Notes. There is no indication in the original description of how many specimens were used for the description. This specimen agrees with the description by Philippi & Philippi (1864).

Comments. Kulzer (1958: 25) synonymized *Praocis elliptica* and *P. angustata* with *P. submetallica*. *Praocis elliptica* and *P. angustata* were hitherto considered synonyms on the grounds of the alleged "valid-synonymy" of *P. submetallica*. While establishing the new synonymy *Praocis subaenea* = *P. submetallica*, and according to my study of the types of both species, *Praocis elliptica* and *P. angustata*

housed in the MNNC, I determined the mentioned synonymy does not apply to these species, though they are still synonyms. Using the principle of the first reviewer, I restored *Praocis elliptica* and maintained *P. angustata* in synonymy with it. For comments of the features of this species see above (comments in *Praocis subaenea*).

Subgenus *Anthrasomus* Guérin-Ménéville, 1834

Praocis chevrolati subcostata Gay et Solier

Praocis chevrolati subcostata Gay et Solier, 1840: 231.

Praocis chevrolati coquimboana Kaszab, 1969: 317 syn. nov.

Type series of *Praocis subcostata* (MNHN). Four specimens, with labels: [subcos-/tatus] [*Praocis/ subcostata/* Sol./ Illapel] [*P. subcostatus/* Sol. Gay/ Coquimbo] [Type] [*Praocis/ subcostata* Sol./ Type de Solier/ Col. Marseul/ C. Girard det. 1976]. Of them, the individual with additional label: [Lectotypus/ *Praocis subcostata/* Gay et Solier, 1840/ Des. G. Flores 2005] is here designated lectotype because it is in better condition; the remaining specimens as paralectotypes, plus a label, in the first specimen: [*subcostata* Sol. Gay 231, 15 Chili] below the label [Type]; in the second specimen: [*A. subcostata/* Gay Sol. Illapel (Chili)] below the second label; in the third specimen: [Museum Paris/ (Coll. Solier)/ Coll. Marseul 1890] below the second label; all of them with additional label: [Paralectotypus/ *Praocis subcostata/* Gay et Solier, 1840/ Des. G. Flores 2005].

Notes. Placed as subspecies of *Praocis chevrolati* Guérin-Ménéville by Kulzer (1958).

Paratype of *Praocis chevrolati coquimboana* [Hungarian Soil-Zool. Exp./ Chile: Prov. Coquimbo/ Socos, 12-XI-1965] [Nr. P-B. 113/ leg. Mahunka] [Paratypus 1969/ *Praocis chevrolati/ coquimboana* Kaszab] (FMNH).

Comments. The features given in the key of Kaszab (1969) are wrong. The type specimens of both nominal subspecies (at the current classification), *Praocis chevrolati subcostata* and *P. chevrolati coquimboana* present posterior angles of pronotum obtuse and rounded, elytra with punctures of different diameter, each elytron with two longitudinal areas smooth and wide forming carinae, lateral margin of elytra marked by a row of protuberances, pseudopleuron with few protuberances, and abdomen with protuberances. All these features are given for *P. chevrolati coquimboana* in the key of Kaszab (1969), but also include the same traits studied here in the types of *P. chevrolati subcostata*. In his key, Kaszab (1969) studied specimens determined as *P. chevrolati subcostata* from Aconcagua province (Chile) in which the posterior

angles of pronotum are straight, lateral margin of elytra not marked by a row of protuberances, and abdomen with punctures (specimens housed at MNNC and IADIZA); but the types of both nominal subspecies are from Coquimbo province (Chile) and present the opposite features mentioned above.

Subgenus *Orthogonoderes* Gay et Solier, 1840

Praocis pleuroptera Gay et Solier

Praocis pleuroptera Gay et Solier, 1840: 234.

Praocis convexa Germain, 1855: 402 syn. nov.

Type series of *Praocis pleuroptera* (MNHN). One specimen, with labels: [*pleuroptera*] [*Praocis/ pleuroptera/* Sol./ Chili] [*P. pleuroptera/* Gay et Sol./ Santiago] [Type] [*Praocis/ pleuroptera* Sol./ Type de Solier/ Col. Marseul/ C. Girard det. 1976] [Lectotypus/ *Praocis pleuroptera/* Gay et Solier, 1840/ Des. G. Flores 2005] is the lectotype hereby designated.

Notes. There is no indication in the original description about how many specimens were used for the description. This specimen agrees with the description by Solier (1840).

Type series of *Praocis convexa* (MNNC). One specimen, with labels: [*Praocis/ convexa/* P. G.] [*convexus/* P. G. ined. (handwritten by Germain)] [Colección/ P. Germain] [Sintipo] [Chile M.N.H.N./ Tipo N° 595] [*Praocis pleuroptera* Sol./ Det. H. Kulzer 1957] [Lectotypus/ *Praocis convexa/* Germain, 1855/ Des. G. Flores 2006] is the lectotype by present designation.

Notes. There is no indication in the original description of how many specimens were used for the description. This specimen agrees with the description by Germain (1855).

Comments. Kulzer (1958: 71) established the following synonymy: *Praocis dentipes* Germain (= *P. convexa* Germain). However, Kulzer in the type of *Praocis convexa* added a label identifying it as *P. pleuroptera* (see above). Probably he made a mistake when he wrote the paper. After examining the type specimens of *Praocis convexa*, *P. pleuroptera* and *P. dentipes* I agree with Kulzer (in label) in the synonymy of *P. convexa* with *P. pleuroptera*. Then *Praocis convexa* must be synonymized with *P. pleuroptera*, not with *P. dentipes*.

Additional material examined. Type series of *Praocis dentipes* (MNNC): one specimen, with labels: [*dentipes/* P. G. ined. (handwritten by Germain)] [Colección/ P. Germain] [Sintipo] [*Praocis dentipes/* Germain, 1855/ Det. A. Camousseight 1975] [Chile M.N.H.N./ Tipo N° 597] [Lectotypus/ *Praocis dentipes/* Germain, 1855/ Des. G. Flores 2006] is the lectotype hereby designated.

Notes. There is no indication in the original description of how many specimens were used for the description. This specimen agrees with the description by Germain (1855).

Subgenus *Hemipraocis* Kulzer, 1958

Praocis striolicollis Fairmaire

Praocis striolicollis Fairmaire, 1883a: 494.

Praocis denseciliata Fairmaire, 1883b: 508 **syn. nov.**

Type series of *Praocis striolicollis* (MNHN).

Three specimens, with labels: [Museum Paris/ Santa Cruz/ Patagonie/ Lebrun 1883] [Type]. Of them, the individual with additional labels: [*Praocis/ striolicollis/* Fm. (handwritten by Fairmaire)] [Lectotypus/ *Praocis striolicollis/* Fairmaire, 1883/ Des. G. Flores 2005] is here designated lectotype because is the only specimen having the handwritte of Fairmaire; the remaining specimens as paralectotypes, plus two labels: [*Praocis/ striolicollis/* Fairm/ L. Fairmaire det 18_] and [Paralectotypus/ *Praocis striolicollis/* Fairmaire, 1883/ Des. G. Flores 2005].

Lectotype of *Praocis denseciliata* (MNHN). [Santa Cruz/ Patagonie] [*Praocidia longeciliata/* Fairm./ Patagonie (handwritten by Fairmaire)] [Museum Paris/ 1906/ Coll. León Fairmaire] [*Praocis denseciliata/* Frm./ Det. H. Kulzer 1957] [Lectotypus von/ *Praocis denseciliata* Frm./ det. H. Kulzer 1957].

Notes. Kulzer (1958: 63) stated: "In the Paris Museum there is one specimen originally labelled by Fairmaire: *Praocidia longeciliata* Frm. Santa Cruz Patagonie. This specimen is not *Praocidia* because this genus occurs in Peru and Fairmaire never described *Praocidia longeciliata*. The diagnosis and locality agree with *Praocis denseciliata* because I designated this specimen as a lectotype of *Praocis denseciliata* Frm." (translation from German by Wolfgang Schawaller). After examining this specimen I agree with Kulzer on the original misidentification made by Fairmaire.

Comments. The features given by Fairmaire (1883a, b) for both species are variable: the lectotype of *Praocis denseciliata* also has the lateral margin of pronotum depressed and disc of pronotum with longitudinal striae as in the types of *P. striolicollis*. In addition, the features given by Kulzer (1958) in his key for the subgenus *Praocis* (*Hemipraocis*) for separating both species are wrong: *P. denseciliata* has the lateral margin of elytra sharp (as in *P. striolicollis*), and antennae reaching 3/4 of lateral margin of pronotum (as in *P. striolicollis*), and not lateral margin of elytra rounded nor antennae reaching base of pronotum, as Kulzer (1958) stated.

Praocis inermis Burmeister

Praocis inermis Burmeister, 1875: 497.

Praocis compacta Fairmaire, 1883b: 509 **syn. nov.**

Type series of *Praocis inermis* (MACN). One specimen, with labels: [Carmen/ Patag] [*Praocis/ inermis/* Burmeister, 1875/ Typus] [Lectotypus/ *Praocis inermis/* Burmeister, 1875/ Des. G. Flores 2006] is the lectotype hereby designated.

Notes. There is no indication in the original description about how many specimens were used for the description. This specimen and the place of collection (Carmen de Patagones, Patagonia) agree with the description by Burmeister (1875).

Type series of *Praocis compacta* (MNHN). One specimen, with labels: [Cabo de/ S. Antonio] [Type] [*Praocis/ compacta/* Fairm. (handwritten by Fairmaire)/ Buenos Aires] [Lectotypus/ *Praocis compacta/* Fairmaire, 1883/ Des. G. Flores 2005] is here designated lectotype.

Notes. The measurements in the original description are given as a range, suggesting several specimens. This specimen and the place of collection (Cabo de San Antonio, Buenos Aires) agree with the description by Fairmaire (1883b).

Comments. Kulzer (1958) stated that he did not examine the type of *Praocis inermis*. The features given by Kulzer (1958) in his key of the subgenus *Praocis* (*Hemipraocis*) for separating *P. inermis* and *P. compacta* are wrong: for *P. inermis* he stated the body is opaque, pronotum with large punctures, twice as long as broad, elytra feebly punctured and chagrined and prosternum not produced forwards and backwards (option 14 (13)); for *P. compacta*, Kulzer stated the body is shiny, pronotum with small fine punctures, three times as long as broad, elytra strongly punctured, prosternum horizontal and produced forwards and backwards (option 13 (14)). The types of both nominal species have body shiny, pronotum with small fine punctures, twice as long as broad, elytra strongly punctured and chagrined, prosternum strongly arched and produced forwards and backwards. These characters are constant in the abundant specimens of this species housed in the Argentinean collections. At the moment of studying at the MNHN the type of *Praocis compacta* I had in hand the type of *P. inermis* from the MACN; for this reason I could compare the type material of both species side-to-side and found this synonymy.

Tribe Nycteliini

Genus *Nyctelia* Latreille, 1825

Nyctelia laticauda Burmeister

(Figs 1–2)

Nyctelia laticauda Burmeister, 1877: 70.

Nyctelia planicauda Fairmaire, 1905: 294 **syn. nov.**

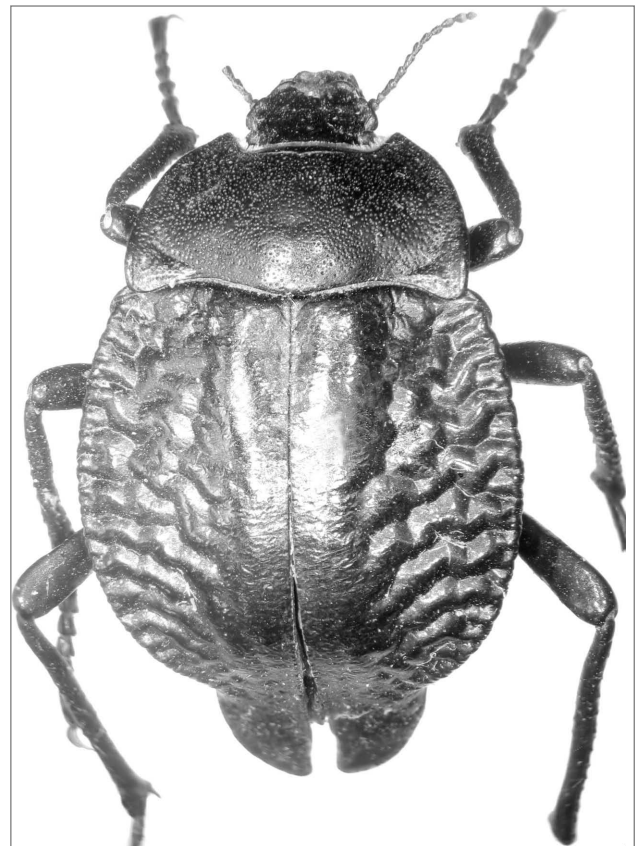
Type series of *Nyctelia laticauda* (MACN). One specimen, with labels: [Nahuel/ Huapi] [*Nyctelia/ laticauda/* Burmeister, 1877/ Typus (handwritten by Bachmann)] [Lectotypus/ *Nyctelia laticauda/* Burmeister, 1877/ Des. G. Flores 2006] is the lectotype hereby designated (Fig. 1).

Notes. There is no indication in the original description of how many specimens were used for the description. This specimen and the place of collection (Nahuel Huapi, Patagonia) agree with the description by Burmeister (1877).

Type series of *Nyctelia planicauda* (MACN). One specimen, with labels: [Rca. Argentina/ Gob. Santa Cruz/ IV.1902 / C. Bruch] [Typus] [Foto] [*Nyctelia/ planicauda/* Fair. tipo (handwritten by Bruch)] [*Nyctelia* (cut, with remainings)/ *planicauda* Fm. n. sp. (handwritten by Fairmaire)] [*Nyctelia/ planicauda* (sic, pro *laticauda*) / Burm. / con tipo comp. (handwritten by Bruch)] [Lectotypus/ *Nyctelia planicauda/* Fairmaire, 1905/ Des. G. Flores 2006] [= *Nyctelia/ laticauda/* Burmeister, 1877/ Det. G. Flores 2006] is here designated lectotype (Fig. 2).

Notes. The measurements in the original description are given as a range and Fairmaire (1905) stated differences between male and female, suggesting several specimens. This specimen and the place of collection (Santa Cruz) agree with the description by Fairmaire (1905).

Comments. Kulzer (1963: 68) stated that he did not examine the type of *Nyctelia laticauda* which is deposited in the MACN; because this species was unknown to him he did not include it in his key to the species of *Nyctelia* and considered this species as *incertae sedis*. I present the photographs of the types of both nominal species (Figs 1 and 2) to illustrate this new synonymy and to show the differences with the photograph of the specimen of *Nyctelia planicauda* presented by Kulzer (1963: Plate 4, Fig. 8). The types of *Nyctelia laticauda* and *N. planicauda* (Figs 1 and 2) have elytra with transverse and rugose grooves leaving a smooth area at the sides of the suture, whereas the specimen illustrated by Kulzer for *N. planicauda* (1963: Plate 4, Fig. 8) presents oblique and straight grooves on the elytra, occupying the whole surface.



Figures 1–2. Lectotype of (1) *Nyctelia laticauda* Burmeister and (2) *N. planicauda* Fairmaire.

Nyctelia vageimpressa Fairmaire

Nyctelia vageimpressa Fairmaire, 1904: 62.

Nyctelia bifoveata Fairmaire, 1905: 294 **syn. nov.**

Type series of *Nyctelia vageimpressa* (MNHN).

One specimen, with labels: [Rca. Argentina/ Prov. Catamarca/ 15-II-1897/ C. Bruch] [Type] [Collection Fairmaire/ 1906] [*Nyctelia vageimpressa*/ Fm. n. sp. (handwritten by Fairmaire)] [Lectotypus/ *Nyctelia vageimpressa*/ Fairmaire, 1904/ Des. G. Flores 2005] is here designated lectotype.

Notes. The measurements in the original description are given as a range, suggesting several specimens. This specimen and the place of collection (Catamarca) agree with the description by Fairmaire (1904).

Type series of *Nyctelia bifoveata* (MACN). One specimen, with labels: [Rep. Argentina/ Prov. Catamarca/ XII.1896/ C. Bruch] [Typus] [Foto] [*Nyctelia bifoveata*/ Fair. Tipo (handwritten by Bruch)] [*Nyctelia* (cut, with remainings)/ *bifoveata* Fm. n. sp. (handwritten by Fairmaire)] [Lectotypus/ *Nyctelia bifoveata*/ Fairmaire, 1905/ Des. G. Flores 2005] is the lectotype hereby designated.

Notes. There is no indication in the original description about how many specimens were used for the description. This specimen and the place of collection (Catamarca) agree with the description by Fairmaire (1905).

Comments. Kulzer (1963: 69) stated that he did not examine the type of *Nyctelia bifoveata* which is deposited in the MACN; because this species was unknown to him he did not include it in his key to the species of *Nyctelia* and considered this species as *incertae sedis*. Curiously Fairmaire described the same species twice in a period of one year (1904, 1905) and in both descriptions he pointed out the two large depressions in the base of pronotum, a trait unique to the genus and readily visible in both type specimens. At the moment of studying at the MNHN the type of *Nyctelia vageimpressa* I had in hand the type of *N. bifoveata* from the MACN; for this reason I could compare the type material of both species side-to-side and found this synonymy.

LECTOTYPE DESIGNATIONS

Tribe Praocini

Genus *Praocis* Eschscholtz, 1829

Subgenus *Praocis* Eschscholtz, 1829

Praocis rufipes Eschscholtz

Praocis rufipes Eschscholtz, 1829: 6

Type series of *Praocis rufipes* (MNHUB). Five specimens, with labels: [Hist.-Coll. (Coleoptera)/ Nr. 14895/ *Praocis rufipes* Eschsch./ Chili, Eschsch. & V./ Chamisso/ Zool. Mus. Berlin]. Of them, I choose the specimen with additional labels: [Type] [14895] above of the other labels and [Lectotypus/ *Praocis rufipes* Eschsch./ Des. G. Flores 2001] as lectotype because is in better condition; the remaining specimens as paralectotypes, with a label: [Paralectotypus/ *Praocis rufipes* Eschsch./ Des. G. Flores 2001].

Praocis sulcata Eschscholtz

Praocis sulcata Eschscholtz, 1829: 7.

Type series of *Praocis sulcata* (MNHUB). Two specimens, with labels: [Hist.-Coll. (Coleoptera)/ Nr. 14893/ *Praocis sulcata* Eschsch./ Chili, Eschsch./ Zool. Mus. Berlin] [Syntypus/ *Praocis sulcata*/ Eschscholtz, 1829/ labelled by the MNHUB 2005]. Of both, I choose the specimen with additional labels: [Type] [14893] above of the other labels and [Lectotypus/ *Praocis sulcata*/ Eschscholtz, 1829/ Des. G. Flores 2005] as lectotype because is in better condition; the remaining specimen as paralectotype, with a label: [Paralectotypus/ *Praocis sulcata*/ Eschscholtz, 1829/ Des. G. Flores 2005].

Praocis costata Gay et Solier

Praocis costata Gay et Solier, 1840: 222.

Type series of *Praocis costata* (MNHN). Two specimens, with labels: [*costata*] [*Praocis costata*/ Sol./ Chili] [Type] [*Praocis costata* Sol./ Type de Solier/ Col. Marseul/ C. Girard det. 1975]. Of them, the individual with additional labels: [*Pr. costata*/ Sol./ Chili] and [Lectotypus/ *Praocis costata*/ Gay et Solier, 1840/ Des. G. Flores 2005] is the lectotype hereby designated because is in better condition, the remaining specimen as paralectotype, with a label: [Paralectotypus/ *Praocis costata*/ Gay et Solier, 1840/ Des. G. Flores 2005].

One specimen: [*costata*] [*Praocis costata*/ Sol./ Chili] [*Praocis ciliata*/ P. G. (handwritten by Germain)] [Type] (MNHN).

Notes. Kulzer (1958: 15) established the following synonymy: *Praocis costata* Solier (= *P. ciliata* Germain) and stated that the type of *P. ciliata* is in the MNHC. This specimen labeled as *Praocis ciliata* agrees with the description by Germain (1855: 400), and because of its having Germain's handwriting it is without doubt a Germain's syntype of *P. ciliata*; it does not belong to the type series of *P. costata* because it was added posteriorly. The type of *Praocis ciliata*

is not in the MNHC (Camousseight 1980). After examining both type specimens of *Praocis costata* and *P. ciliata* I agree with Kulzer (1958) in this synonymy.

Praocis curta Solier

Praocis curta Solier, 1840: 226.

Type series of *Praocis curta* (MNHN). One specimen, with labels: [*curta*] [*Praocis/ curta/ Sol./ Chili*] [*P. curta/ Sol.*] [Chili M.B. Tournade] [Type] [*Praocis/ curta Sol./ Type de Solier/ Col. Marseul/ C. Girard det. 1975*] [Lectotypus/ *Praocis curta/ Solier, 1840/ Des. G. Flores 2005*] is the lectotype hereby designated.

Notes. There is no indication in the original description about how many specimens were used for the description. This specimen agrees with the description by Solier (1840).

Praocis subsulcata Gay et Solier

Praocis subsulcata Gay et Solier, 1840: 224.

Type series of *Praocis subsulcata* (MNHN). Three specimens, with labels: [*subsul / cata*] [*Praocis/ subsulcata/ Coquimbo/ Sol.*] [*P. subsulcata/ Gay-Sol./ Coquimbo*] [Type] [*Praocis/ subsulcata Sol./ Type de Solier/ Col. Marseul/ C. Girard det. 1975*]. Of them, the individual with additional label: [Lectotypus/ *Praocis subsulcata/ Gay et Solier, 1840/ Des. G. Flores 2005*] is here designated lectotype because is in better condition, the remaining specimens as paralectotypes, one plus a label: [*subsulcata Sol. 224, 6 Coquimbo*] below the label [Type] and the other plus a label: [Coquimbo/ Gay] between first and second label; both with additional label: [Paralectotypus/ *Praocis subsulcata/ Gay et Solier, 1840/ Des. G. Flores 2005*].

Praocis spinolai Gay et Solier

Praocis spinolai Gay et Solier, 1840: 223.

Type series of *Praocis spinolai* (MNHN). Three specimens, with labels: [*spino / lae*] [*Praocis/ spinolae / Sol./ Coquimbo*] [Type] [*Praocis/ spinolai Sol./ Type de Solier/ Col. Marseul/ C. Girard det. 1975*]. Of them, the individual with additional labels: [Coquimbo/ Gay] below the first label and [Lectotypus/ *Praocis spinolai/ Gay et Solier, 1840/ Des. G. Flores 2005*] is the lectotype hereby designated because is in better condition, the remaining specimens as paralectotypes, with a label: [Paralectotypus/ *Praocis spinolai/ Gay et Solier, 1840/ Des. G. Flores 2005*].

Praocis aenea Gay et Solier

Praocis aenea Gay et Solier, 1840: 227.

Type series of *Praocis aenea* (MNHN). Three specimens, with labels: [*aenea/ Type/ Solier*] [*Praocis/ aenea/ Sol./ Coquimbo*] [Coquimbo/ Gay] [Type] [*Praocis/ aenea Sol./ Type de Solier/ Col. Marseul/ C. Girard det. 1975*]. Of them, the individual with additional label: [Lectotypus/ *Praocis aenea/ Gay et Solier, 1840/ Des. G. Flores 2005*] is here designated lectotype because is in better condition, the remaining specimens as paralectotypes, one plus a label: [*aenea Sol. Gay 227: 11 Coquimbo*] below the label [Type], both with a label: [Paralectotypus/ *Praocis aenea/ Gay et Solier, 1840/ Des. G. Flores 2005*].

Praocis parva Gay et Solier

Praocis parva Gay et Solier, 1840: 232.

Type series of *Praocis parva* (MNHN). Four specimens, with labels: [*parva*] [*Praocis/ parva Sol./ Coquimbo*] [Type] [*Praocis/ parva Sol./ Type de Solier/ Col. Marseul/ C. Girard det. 1975*]. Of them, the individual with additional labels: [*P. parva Gay et/ Sol. Coquimbo*] below the first and second labels and [Lectotypus/ *Praocis parva/ Gay et Solier, 1840/ Des. G. Flores 2005*] is the lectotype hereby designated because is in better condition, the remaining specimens as paralectotypes, one plus two labels: [Coquimbo/ Gay] and [*parva Sol. Gay 232, 17 Chili*] below the label [Type] and one of the others plus two labels: [Museum Paris/ Coll. Solier/ Coll. Marseul 1890] and [*Praocis/ parva Sol./ det. H. Kulzer 1957*] below the label [Type]; all of them with a label: [Paralectotypus/ *Praocis parva/ Gay et Solier, 1840/ Des. G. Flores 2005*].

Praocis quadrisulcata Germain

Praocis quadrisulcata Germain, 1855: 399.

Type series of *Praocis quadrisulcata* (MNHC). One specimen, with labels: [Chile] [*quadrisulcata/ P. G. ined. (handwritten by Germain)*] [Colección/ P. Germain] [Sintipo] [Chile M.N.H.N./ Tipo N° 596] [Lectotypus/ *Praocis quadrisulcata/ Germain, 1855/ Des. G. Flores 2006*] is here designated lectotype.

Notes. There is no indication in the original description of how many specimens were used for the description. This specimen agrees with the description by Germain (1855).

Subgenus *Postpraocis* Kulzer, 1958

Praocis costatula Gay et Solier

Praocis costatula Gay et Solier, 1840: 228.

Type series of *Praocis costatula* (MNHN). Four specimens, with labels: [*costatula*] [*Praocis/ costatula* Sol./ Sta. Rosa] [Type] [*Praocis/ costatula* Sol./ Type de Solier/ Col. Marseul/ C. Girard det. 1976]. Of them, the individual with additional labels: [*P. costatula* Sol./ Sta. Rosa] below the first and second labels and [Lectotypus/ *Praocis costatula*/ Gay et Solier, 1840/ Des. G. Flores 2005] is the lectotype by present designation because is in better condition, the remaining specimens as paralectotypes, one plus a label: [*P. costatula*/ Gay - Sol./ Sta. Rosa]; all of them with a label: [Paralectotypus/ *Praocis costatula*/ Gay et Solier, 1840/ Des. G. Flores 2005].

Praocis curtisi Solier

Praocis curtisi Solier, 1851: 192.

Type series of *Praocis curtisi* (MNHN). Four specimens, with labels: [*curtisi*] [*Praocis/ curtisi*/ Sol./ Copiapó] [*P. curtisi* Sol./ Copiapó] [Type] [*Praocis/ curtisi* Solier/ Type de Solier/ Col. Marseul/ C. Girard det. 1976]. Of them, the individual with additional label: [Lectotypus/ *Praocis curtisi*/ Solier, 1851/ Des. G. Flores 2005] is the lectotype hereby designated because is in better condition, the remaining specimens as paralectotypes, one plus a label: [*curtisi* Sol. Chili, 192 Chili] below the label [Type], all of them with a label: [Paralectotypus/ *Praocis curtisi*/ Solier, 1851/ Des. G. Flores 2005].

Praocis pentachorda Burmeister

Praocis pentachorda Burmeister, 1875: 496.

Type series of *Praocis pentachorda* (MACN). One specimen, with labels: [Cordova] [*Praocis/ pentachorda*/ Burmeister, 1875/ Typus (handwritten by Bachmann)] [Lectotypus/ *Praocis pentachorda*/ Burmeister, 1875/ Des. G. Flores 2006] is here designated lectotype.

Notes. There is no indication in the original description of how many specimens were used for the description. This specimen and the place of collection (Cordoba) agree with the description by Burmeister (1875).

Comments. Kulzer (1958) stated he did not examine the type of *Praocis pentachorda* which is deposited in the MACN. Burmeister (1875) and Kulzer (1958)

stated that this species occurs in Cordoba, which is wrong. Based on the abundant material of this species housed in the Argentinean collections, I consign its geographical distribution to high mountains in Catamarca, Tucumán and Salta provinces of Argentina between 2200 and 3600 m, in the biogeographic provinces of Prepuna and Puna (Cabrera and Willink, 1980).

Praocis concinna Burmeister

Praocis concinna Burmeister, 1875: 496.

Type series of *Praocis concinna* (MACN). Three specimens, with labels: [Córdoba] [*Praocis/ concinna*/ Burmeister, 1875/ Syntypus (handwritten by Bachmann)]. Of them, the individual with additional label: [Lectotypus/ *Praocis concinna*/ Burmeister, 1875/ Des. G. Flores 2006] is the lectotype by present designation because is in better condition, the remaining specimens as paralectotypes, with a label: [Paralectotypus/ *Praocis concinna*/ Burmeister, 1875/ Des. G. Flores 2006].

Comments. Kulzer (1958) stated he did not examine the type of *Praocis concinna* which is deposited in the MACN and he considered this species as *incertae sedis*. I rediscovered this valid species and placed it in the subgenus *Postpraocis*, according to that definition of Kulzer (1958). Burmeister (1875) stated that this species occurs in Cordoba, which is wrong. Based on the abundant material of this species housed in the IADIZA, I consign its geographical distribution to Mendoza and San Juan provinces of Argentina, endemic to the Uspallata-Calingasta altitudinal valley between 1900 and 2700 m, in the biogeographic province of Monte (Roig Juárez *et al.* 2001).

Subgenus *Anthrasomus* Guérin-Méneville, 1834

Praocis chevrolati (Guérin-Méneville)

Anthrasomus chevrolati Guérin-Méneville, 1834: 32.

Type series of *Anthrasomus chevrolati* (MNHN). Two specimens, with labels: [Type/ Guérin-Men.] [Type]. Of them, the individual with additional labels: [*Anthrasomus/ chevrolati* Guer./ Chili Coquimbo] below the label [Type] and [Lectotypus/ *Anthrasomus chevrolati*/ Guérin-Méneville, 1834/ Des. G. Flores 2005] is the lectotype hereby designated because is in better condition and has the place of collection (Coquimbo), the remaining specimen as paralectotype with two additional labels: [*Anthrasomus/ chevrolati*/ Guer. Chili] below the label [Type] and [Paralectotypus/ *Anthrasomus chevrolati*/ Guérin-Méneville, 1834/ Des. G. Flores 2005].

Praocis hirtuosa Gay et Solier*Praocis hirtuosa* Gay et Solier, 1840: 232.

Type series of *Praocis hirtuosa* (MNHN). One specimen, with labels: [*hirtuo / sus*] [*Praocis/ hirtuosa* Sol./ Sta. Rosa] [*P. hirtuosus* Gay/ et Sol. Sta. Rosa] [Type] [*hirtuosa* Sol. Gay 232, 18 Chili] [*Praocis/ hirtuosa* Sol./ Type de Solier/ Col. Marseul/ C. Girard det. 1976] [Lectotypus/ *Praocis hirtuosa*/ Gay et Solier, 1840/ Des. G. Flores 2005] is here designated lectotype.

Notes. There is no indication in the original description of how many specimens were used for the description. This specimen and the place of collection (Santa Rosa) agrees with the description by Solier (1840).

Subgenus *Filotarsus* Gay et Solier, 1840*Praocis tenuicornis* Gay et Solier*Praocis tenuicornis* Gay et Solier, 1840: 241.

Type series of *Praocis tenuicornis* (MNHN). Three specimens, with labels: [*tenuicornis*] [*Praocis/ tenuicornis* Sol./ Copiapo] [*P. tenuicornis*/ Sol. Copiapo] [Type] [*Praocis/ tenuicornis* Sol./ Type de Solier/ Col. Marseul/ C. Girard det. 1976]. Of them, the individual with additional label: [Lectotypus/ *Filotarsus tenuicornis*/ Gay et Solier, 1840/ Des. G. Flores 2005] is the lectotype by present designation because is in better condition, the remaining specimens as paralectotypes, one of them plus a label: [*tenuicornis* Sol. 1840. 241, Coquimbo/ (*Filotarsus*)], both with a label: [Paralectotypus/ *Filotarsus tenuicornis*/ Gay et Solier, 1840/ Des. G. Flores 2006].

Praocis rufilabris Gay et Solier*Praocis rufilabris* Gay et Solier, 1840: 233.

Type series of *Praocis rufilabris* (MNHN). One specimen, with labels: [*rufi / labris*] [*Praocis/ rufilabris* Sol./ Chili] [Type] [*rufilabris* Sol. Gay. 233, 19 Chili] [*Praocis/ rufilabris* Sol./ Type de Solier/ Col. Marseul/ C. Girard det. 1976] [Lectotypus/ *Praocis rufilabris*/ Gay et Solier, 1840/ Des. G. Flores 2005] is here designated lectotype.

Notes. There is no indication in the original description of how many specimens were used for the description. This specimen agrees with the description by Solier (1840).

Praocis oblonga Solier*Praocis oblonga* Solier, 1851: 196.

Type series of *Praocis oblonga* (MNHN). One specimen, with labels: [*oblonga*] [*Praocis/ oblonga* Sol./ Coquimbo] [*P. oblonga* Sol./ Coquimbo] [Type] [*Praocis/ oblonga* Sol./ Type de Solier/ Col. Marseul/ C. Girard det. 1976] [Lectotypus/ *Praocis oblonga*/ Solier, 1851/ Des. G. Flores 2005] is the lectotype by present designation.

Notes. The measurements in the original description are given as a range, suggesting several specimens. This specimen and the place of collection (Coquimbo) agree with the description by Solier (1851). There is another specimen in the MNHN labeled as Solier's type of *Praocis oblonga*, but it differs from the lectotype of *P. oblonga* in having anterior angles of pronotum rounded and prosternum with apophysis, whereas the lectotype of *P. oblonga* presents anterior angles of pronotum acute and prosternum convex, without apophysis. I did not designate this second specimen as paralectotype of *P. oblonga* because I consider that it belongs to another species.

Subgenus *Praonoda* Kulzer, 1958*Praocis bicarinata* Burmeister*Praocis bicarinata* Burmeister, 1875: 495, species composita.
Praocis silphomorpha Fairmaire, 1883a: 495; syn. by Berg (1884).

Type series of *Praocis bicarinata* (MACN). Four specimens, with labels: [Santa Cruz/ Patag.] [*Praocis/ bicarinata*/ Burmeister, 1875/ Syntypus (handwritten by Bachmann)]. Of them, I choose the individual with additional labels: [sex: male/ Det. G. Flores] and [Lectotypus/ *Praocis bicarinata*/ Burmeister, 1875/ Des. G. Flores 2006] as lectotype because is a male and in good condition; the remaining specimens as paralectotypes: one female, another one not sexed and the third one female, but with a label: [*Praocis/ fimbriata*/ Burmeister, 1875/ Det. G. Flores 2006]; all of them with a label: [Paralectotypus/ *Praocis bicarinata*/ Burmeister, 1875/ Des. G. Flores 2006].

Note. Because the four syntypes housed in the MACN belong to two different species, reading the original description and examining all syntypes together with Axel Bachmann, we concluded that the lectotype here designated corresponds to *Praocis bicarinata*.

Type series of *Praocis silphomorpha* (MNHN). Two specimens; of both, the individual with labels: [Museum Paris/ 1906/ Coll. León Fairmaire] [*Praocis/ silphomorpha* Fm. (handwritten by Fairmaire)/ Patag.] [Lectotypus/ *Praocis silphomorpha*/ Fairmaire,

1883/ Des. G. Flores 2005] (probably female) is the lectotype hereby designated because it has the label handwritten by Fairmaire. The remaining specimen as paralectotype with labels: [Museum Paris/ Santa Cruz/ Patagonie/ Lebrun 1883] and [Paralectotypus/ *Praocis silphomorpha*/ Fairmaire, 1883/ Des. G. Flores 2005] (probably male). Both specimens with a label: [*Praocis bicarinata*/ Burm./ Det. H. Kulzer 1957].

Note. Fairmaire (1883a) gave the measurements in the original description as a range and stated differences between male and female, suggesting several specimens.

Comment. This synonymy was established by Berg (1884) and confirmed by Gebien (1938), Kulzer (1958) and my present study of the type specimens of both nominal species.

Subgenus *Hemipraocis* Kulzer, 1958

Praocis fimbriata Burmeister

Praocis fimbriata Burmeister, 1875: 496 species composita.

Type series of *Praocis fimbriata* (MACN and MPLA): Three specimens, two in MACN with a label: [*Praocis fimbriata*/ Burmeister, 1875/ Syntypus (handwritten by Bachmann)]. Of both, the individual with additional label: [Lectotypus/ *Praocis fimbriata*/ Burmeister, 1875/ Des. G. Flores 2006] (MACN) is the lectotype by present designation because it agrees with the original description of Burmeister (1875). The remaining specimens as paralectotypes, the one in MACN with additional labels: [Patagonia] and [*Praocis striolicollis*/ Fairmaire, 1883/ Det. G. Flores 2006], the other specimen in MPLA with labels: [Typus] [S. Cruz/ Patag] [*Praocis fimbriata*/ Burm. (handwritten by Berg)], both with a label: [Paralectotypus/ *Praocis fimbriata*/ Burmeister, 1875/ Des. G. Flores 2006].

Notes. There is no indication in the original description by Burmeister (1875) about how many specimens were used for the description nor about place of collection. Because the two syntypes housed in the MACN belong to two different species, reading the original description and examining both syntypes together with Axel Bachmann, we concluded that the lectotype here designated corresponds to *Praocis fimbriata*. The paralectotype housed in MPLA also corresponds to *Praocis fimbriata* but I choose the syntype of MACN as lectotype because is the institution containing the majority of Burmeister's types. *Praocis fimbriata* is characterized by having the pronotum with punctures, vaulted, lateral margin contiguous with disc, and with a tuft of long setae on the lateral margins of pronotum and elytra, while *P. striolicollis*

has the pronotum with longitudinal wrinkles declivity, lateral margin depressed and remote from disc, and sparse short setae in the lateral margins of pronotum and elytra.

Praocis sellata Berg

Praocis sellata Berg, 1889: 126.

Type series of *Praocis sellata* (MPLA). One specimen, with labels: [Typus] [St. Cruz/ Patag] [*Praocis sellata*/ 1889 Berg (handwritten by Berg)] [Lectotypus/ *Praocis sellata*/ Berg, 1889/ Des. G. Flores 2006] is here designated lectotype.

Notes. Berg (1889) gave the measurements in the original description as a range, suggesting several specimens; he also stated that he had several specimens collected in Chubut and Santa Cruz provinces. This specimen and the place of collection (Santa Cruz) agree with the description by Berg (1889) and is the only type specimen of this species that I found in Argentinean museums. Kulzer (1958) stated that the type of *Praocis sellata* was unknown to him.

Genus *Praocidia* Fairmaire, 1903

Praocidia nervosa (Fairmaire)

Praocidia nervosa Fairmaire, 1902: 149.

Type series of *Praocidia nervosa* (MNHN). Two specimens, with labels: [Santiago/Perou] [Baer] (coll.). Of both, the individual with additional labels: [*Praocidia nervosa* Fairm. n. sp (handwritten by Fairmaire)] and [Lectotypus/ *Praocidia nervosa*/ Fairmaire, 1902/ Des. G. Flores 2005] is the lectotype hereby designated because it has the label handwritten by Fairmaire; the remaining specimen as paralectotype, with a label: [Paralectotypus/ *Praocidia nervosa*/ Fairmaire, 1902/ Des. G. Flores 2005].

Genus *Asidelia* Fairmaire, 1905

Asidelia contracta Fairmaire

Asidelia contracta Fairmaire, 1905: 296.

Type series of *Asidelia contracta* (MACN). One specimen, with labels: [Rca. Argentina/ Gob. Santa Cruz/ IV-1903/ C. Bruch] [Typus] [*Asidelia contracta*/ Fair. Tipo (handwritten by Bruch)] [*Asidelia contracta*/ Fm. n.g. n.sp. (handwritten by Fairmaire)] [Lectotypus/ *Asidelia contracta*/ Fairmaire, 1905/

Des. G. Flores 2006] is the lectotype by present designation.

Notes. There is no indication in the original description of how many specimens were used for the description. This specimen and the place of collection (Santa Cruz) agree with the description by Fairmaire (1905).

Tribe Nycteliini

Genus *Nyctelia* Latreille, 1825

Nyctelia porcata Burmeister

Nyctelia porcata Burmeister, 1877: 70.

Type series of *Nyctelia porcata* (MACN). Three specimens, with a label: [*Nyctelia/ porcata/* Burmeister, 1877/ Syntypus (handwritten by Bachmann)]. Of them, the individual with additional label: [Lectotypus/ *Nyctelia porcata/* Burmeister, 1877/ Des. G. Flores 2006] is here designated lectotype; the remaining specimens as paralectotypes, one with a further label: [Nahuel/ Huapi], both with additional label: [Paralectotypus/ *Praocis concinna/* Burmeister, 1875/ Des. G. Flores 2006].

Note. The specimen designated as lectotype has six oblique carinae on the elytron as stated in the original description (Burmeister, 1877), whereas the two paralectotypes present five oblique carinae.

Nyctelia rotundipennis Fairmaire

Nyctelia rotundipennis Fairmaire, 1904: 63.

Type series of *Nyctelia rotundipennis* (MACN). One specimen, with labels: [Rca. Argentina/ Gob. Rio Negro/ 17-III-1901/ C. Bruch] [Typus] [*Nyctelia/ rotundipennis/* Tipo Fairm. (handwritten by Bruch)] [*Nyctelia/ rotundipennis/* Fm. n. sp. (handwritten by Fairmaire)] [Lectotypus/ *Nyctelia/ rotundipennis/* Fairmaire, 1904/ Des. G. Flores 2006] is the lectotype by present designation.

Notes. There is no indication in the original description about how many specimens were used for the description. This specimen and the place of collection (Rio Negro) agree with the description by Fairmaire (1904).

Nyctelia blapoides Fairmaire

Nyctelia blapoides Fairmaire, 1905: 293.

Type series of *Nyctelia blapoides* (MACN). One specimen, with labels: [Rca. Argentina/ Gob. Rio Negro/

7-II-1898/ C. Bruch] [Typus] [*Nyctelia/ blapoides/* Tipo Fairm. (handwritten by Bruch)] [*Nyctelia* (cut, with remainings)/ *blapoides/* Fm. n. sp. (handwritten by Fairmaire)] [Lectotypus/ *Nyctelia/ blapoides/* Fairmaire, 1905/ Des. G. Flores 2006] is the lectotype hereby designated.

Notes. There is no indication in the original description of how many specimens were used for the description. This specimen and the place of collection (Rio Negro) agree with the description by Fairmaire (1905).

Nyctelia producta Fairmaire

Nyctelia producta Fairmaire, 1905: 295.

Type series of *Nyctelia producta* (MACN). One specimen, with labels: [Rca. Argentina/ Gob. Chubut/ III-1903/ C. Bruch] [Typus] [*Nyctelia/ producta/* Tipo Fairm. (handwritten by Bruch)] [*Nyctelia* (cut, with remainings)/ *producta/* Fm. n. sp. (handwritten by Fairmaire)] [Lectotypus/ *Nyctelia producta/* Fairmaire, 1905/ Des. G. Flores 2006] is here designated lectotype.

Notes. There is no indication in the original description about how many specimens were used for the description. This specimen and the place of collection (Chubut) agree with the description by Fairmaire (1905).

Nyctelia confluens Fairmaire

Nyctelia confluens Fairmaire, 1905: 292.

Type series of *Nyctelia confluens* (MACN). One specimen, with labels: [Rca. Argentina/ Gob. Tierra del Fuego/ 1900/ C. Bruch] [Typus] [*Nyctelia/ confluens/* Tipo Fairm. (handwritten by Bruch)] [*Nyctelia* (cut, with remainings)/ *confluens* Fm. n. sp. (handwritten by Fairmaire)] [Lectotypus/ *Nyctelia confluens/* Fairmaire, 1905/ Des. G. Flores 2006] is the lectotype by present designation.

Notes. There is no indication in the original description of how many specimens were used for the description. This specimen and the place of collection (Tierra del Fuego) agree with the description by Fairmaire (1905). Synonymized with *Nyctelia westwoodi* Waterhouse by Gebien (1937: 746).

Nyctelia timarchoides Fairmaire

Nyctelia timarchoides Fairmaire, 1905: 291.

Type series of *Nyctelia timarchoides* (MACN). One specimen, with labels: [Rca. Argentina/ Gob.

Santa Cruz/ II-1901/ C. Bruch] [Typus] [*Nyctelia timarchoides*/ Tipo Fairm. (handwritten by Bruch)] [*Nyctelia* (cut, with remainings)/ *timarchoides* Fm. n. sp. (handwritten by Fairmaire)] [Lectotypus/ *Nyctelia timarchoides*/ Fairmaire, 1905/ Des. G. Flores 2006] is the lectotype hereby designated.

Notes. The measurements in the original description are given as a range and Fairmaire (1905) stated differences between male and female, suggesting several specimens. This specimen and the place of collection (Santa Cruz) agree with the description by Fairmaire (1905). Synonymized with *Nyctelia guerini* Waterhouse by Gebien (1937: 748).

Nyctelia geometrica Fairmaire

Nyctelia geometrica Fairmaire, 1905: 292.

Type series of *Nyctelia geometrica* (MACN). One specimen, with labels: [Rca. Argentina/ Gob. Chubut/ III-1900/ C. Bruch] [Typus] [*Nyctelia geometrica*/ Tipo Fairm. (handwritten by Bruch)] [*Nyctelia* (cut, with remainings)/ *geometrica* Fm. n. sp. (handwritten by Fairmaire)] [Lectotypus/ *Nyctelia geometrica*/ Fairmaire, 1905/ Des. G. Flores 2006] is here designated lectotype.

Notes. There is no indication in the original description about how many specimens were used for the description. This specimen and the place of collection (Chubut) agree with the description by Fairmaire (1905).

Nyctelia dorsata Fairmaire

Nyctelia dorsata Fairmaire, 1905: 295.

Type series of *Nyctelia dorsata* (MACN). One specimen, with labels: [Rca. Argentina/ Gob. Chubut/ 1900/ C. Bruch] [Typus] [*Nyctelia dorsata*/ Tipo Fairm. (handwritten by Bruch)] [*N. dorsata*/ Fm. n. sp. (handwritten by Fairmaire)] [Lectotypus/ *Nyctelia dorsata*/ Fairmaire, 1905/ Des. G. Flores 2006] is the lectotype by present designation.

Notes. There is no indication in the original description of how many specimens were used for the description. This specimen and the place of collection (Chubut) agree with the description by Fairmaire (1905).

Nyctelia crassecostata Fairmaire

Nyctelia crassecostata Fairmaire, 1905: 295.

Type series of *Nyctelia crassecostata* (MACN). One specimen, with labels: [Rca. Argentina/ Gob. Rio

Negro/ 1900/ C. Bruch] [Typus] [*Nyctelia crassecostata*/ Tipo Fairm. (handwritten by Bruch)] [*Nyctelia* (cut, with remainings)/ *crassecostata* Fm. n. sp. (handwritten by Fairmaire)] [Lectotypus/ *Nyctelia crassecostata*/ Fairmaire, 1905/ Des. G. Flores 2006] is the lectotype hereby designated.

Notes. There is no indication in the original description about how many specimens were used for the description. This specimen and the place of collection (Rio Negro) agree with the description by Fairmaire (1905).

Nyctelia pinguis Fairmaire

Nyctelia pinguis Fairmaire, 1905: 293.

Type series of *Nyctelia pinguis* (MACN). One specimen, with labels: [Rca. Argentina/ Gob. Rio Negro/ XII-1902/ C. Bruch] [Typus] [*Nyctelia pinguis*/ Tipo Fairm. (handwritten by Bruch)] [*Nyctelia* (cut, with remainings)/ *pinguis* Fm. n. sp. (handwritten by Fairmaire)] [Lectotypus/ *Nyctelia pinguis*/ Fairmaire, 1905/ Des. G. Flores 2006] is here designated lectotype.

Notes. There is no indication in the original description about how many specimens were used for the description. This specimen and the place of collection (Rio Negro) agree with the description by Fairmaire (1905). Synonymized with *Nyctelia suturacava* Fairmaire by Kulzer (1963: 26).

Nyctelia discoidalis Fairmaire

Nyctelia discoidalis Fairmaire, 1905: 292.

Type series of *Nyctelia discoidalis* (MACN). One specimen, with labels: [Rca. Argentina/ Gob. Chubut/ II-1895/ C. Bruch] [Typus] [*Nyctelia discoidalis*/ Tipo Fairm. (handwritten by Bruch)] [*Nyctelia* (cut, with remainings)/ *discoidalis* Fm. n. sp. (handwritten by Fairmaire)] [Lectotypus/ *Nyctelia discoidalis*/ Fairmaire, 1905/ Des. G. Flores 2006] is the lectotype by present designation.

Notes. There is no indication in the original description about how many specimens were used for the description. This specimen and the place of collection (Chubut) agree with the description by Fairmaire (1905).

Nyctelia unicastata Fairmaire

Nyctelia unicastata Fairmaire, 1905: 294.

Type series of *Nyctelia unicastata* (MACN). One specimen, with labels: [Rca. Argentina/ Gob. Santa

Cruz/ 15-II-1900/ C. Bruch] [Typus] [*Nyctelia/ unicosata/* Tipo Fairm. (handwritten by Bruch)] [*Nyctelia* (cut, with remainings)/ *unicostata* Fm. n. sp. (handwritten by Fairmaire)] [Lectotypus/ *Nyctelia unicosata/* Fairmaire, 1905/ Des. G. Flores 2006] is the lectotype hereby designated.

Notes. The measurements in the original description are given as a range, suggesting several specimens. This specimen and the place of collection (Santa Cruz) agree with the description by Fairmaire (1905). Incorrect subsequent spelling as *unicosta* by Gebien (1937), Kulzer (1963) and Flores (1997).

Nyctelia exasperata Fairmaire

Nyctelia exasperata Fairmaire, 1905: 292.

Type series of *Nyctelia exasperata* (MACN). Two specimens, with labels: [Rca. Argentina/ Prov. Buenos Aires/ 189 / C. Bruch] [Typus]. Of both, I choose the individual with additional labels: [*Nyctelia/ exasperata/* Tipo Fairm. (handwritten by Bruch)] [*Nyctelia* (cut, with remainings)/ *exasperata* Fm. n. sp. (handwritten by Fairmaire)] and [Lectotypus/ *Nyctelia exasperata/* Fairmaire, 1905/ Des. G. Flores 2006] as lectotype because it has the label handwritten by Fairmaire; the remaining specimen as paralectotype, with additional labels: [*Nyctelia/ exasperata/* Fairmaire 1905/ Syntypus (handwritten by Bachmann)] and [Paralectotypus/ *Nyctelia exasperata/* Fairmaire, 1905/ Des. G. Flores 2006].

Nyctelia quadricollis Fairmaire

Nyctelia quadricollis Fairmaire, 1905: 296.

Type series of *Nyctelia quadricollis* (MACN). One specimen, with labels: [Rca. Argentina/ Prov. San Luis/ XII-1900/ C. Bruch] [Typus] [*Nyctelia/ quadricollis* (sic)/ Tipo Fairm. (handwritten by Bruch)] [*Nyctelia* (cut, with remainings)/ *quadricollis* (sic) Fm. n. sp. (handwritten by Fairmaire)] [Lectotypus/ *Nyctelia quadricollis/* Fairmaire, 1905/ Des. G. Flores 2006] is here designated lectotype.

Notes. There is no indication in the original description about how many specimens were used for the description. This specimen and the place of collection (San Luis) agree with the description by Fairmaire (1905). *N. quadricollis* was synonymized with *Nyctelia angustata* Waterhouse by Gebien (1937: 747); later, Kulzer (1963: 60) synonymized *N. angustata* with *N. brunnipes* Latreille. *N. quadricollis* and *N. angustata* are synonyms with each

other on the grounds of the alleged “valid-synonym” of *N. brunnipes*, so *N. quadricollis* is synonymous with *N. brunnipes* (Kulzer 1963: 60). More recently Flores (1997) stated that *N. brunnipes* is a posterior synonym of *N. nodosa* (Germar).

Nyctelia quadricarinata Fairmaire

Nyctelia quadricarinata Fairmaire, 1905: 293.

Type series of *Nyctelia quadricarinata* (MACN). Two specimens, with labels: [Rca. Argentina/ Gob. Rio Negro/ 3-IV-1898/ C. Bruch] [*Nyctelia/ 4-carinata/* Tipo Fairm. (handwritten by Bruch)] [*Nyctelia* (cut, with remainings)/ *quadricarinata* Fm. n. sp. (handwritten by Fairmaire)]. Of both, I choose the individual with additional labels: [Typus] [Lectotypus/ *Nyctelia quadricarinata/* Fairmaire, 1905/ Des. G. Flores 2006] as lectotype because is in better condition; the remaining specimen as paralectotype, with a small difference in the label handwritten by Fairmaire: [*Nyctelia* (cut, with remainings)/ *4-carinata* Fm. n. sp.] and [Paralectotypus/ *Nyctelia quadricarinata/* Fairmaire, 1905/ Des. G. Flores 2006].

Genus *Psectrascelis* Solier, 1836

Psectrascelis strigosicollis (Fairmaire)

Epipedonota strigosicollis (Fairmaire, 1904: 63).

Type series of *Epipedonota strigosicollis* (MACN and MNHN). Four specimens, one in MACN with labels: [Rca. Argentina/ Prov. Catamarca/ 7-I-1897/ C. Bruch] [Cerro Negro/ 4000 m] [Typus] [*Epipedonota/ strigosicollis/* Tipo Fairm. (handwritten by Bruch)] [*Epipedonota/ strigosicollis* Fm. n. sp. (handwritten by Fairmaire)] [Lectotypus/ *Epipedonota/ strigosicollis/* Fairmaire, 1904/ Des. G. Flores 2005] is the lectotype by present designation. The remaining specimens as paralectotypes, one in MACN with labels: [Rca. Argentina/ Prov. Catamarca/ II.1897 /C. Bruch] [Typus] and [*Epipedonota/ strigosicollis/* Fairmaire 1904/Syntypus] handwritten by Bachmann and two in MNHN with the label handwritten by Fairmaire, all of them with the label: [Paralectotypus/ *Epipedonota/ strigosicollis/* Fairmaire, 1904/ Des. G. Flores 2005].

Note. The specimen designated as lectotype has the labels of the locality ascribed to it (Catamarca, Cerro Negro, 4000 m) in the description by Fairmaire (1904) and had been previously identified as type of this species by Bruch.

Notes. The measurements in the original description are given as a range, suggesting several specimens. The specimen designated as lectotype has the labels of the locality ascribed to it (Catamarca, Cerro Negro, 4000 m) in the description by Fairmaire (1904) and had been previously identified as type of this species by Bruch.

Psectrascelis cariosicollis Fairmaire

Psectrascelis cariosicollis Fairmaire, 1904: 64.

Type series of *Psectrascelis cariosicollis* (MACN). Two specimens, the individual with labels: [Rca. Argentina/ Prov. Catamarca/ 4-I-1897/ C. Bruch] [Typus] [*Psectrascelis cariosicollis*/ Tipo Fairm. (handwritten by Bruch)] [*Psectrascelis cariosicollis* Fm. n. sp. (handwritten by Fairmaire)] [Lectotypus/ *Psectrascelis cariosicollis*/ Fairmaire, 1904/ Des. G. Flores 2006] is here designated lectotype because it has the label handwritten by Fairmaire. The remaining specimen as paralectotype, with labels: [Rca. Argentina/ Prov. Catamarca/ 1900/ C. Bruch] [*Psectrascelis cariosicollis*/ Fairmaire, 1904/ Syntypus (handwritten by Bachmann)] and [Paralectotypus/ *Psectrascelis cariosicollis*/ Fairmaire, 1904/ Des. G. Flores 2006].

Psectrascelis coriaria Fairmaire

Psectrascelis coriaria Fairmaire, 1905: 297.

Type series of *Psectrascelis coriaria* (MACN). One specimen, with labels: [Rca. Argentina/ Prov. Catamarca/ 1900/ C. Bruch] [Typus] [Foto] [*Psectrascelis coriaria* Fm. n. sp. (handwritten by Fairmaire)] [*Psectrascelis coriaria*/ Tipo Fairm. (handwritten by Bruch)] [*Psectrascelis coriaria* Fair./ Syntypus/ det: L.E. Peña G. 1983] [Lectotypus/ *Psectrascelis coriaria*/ Fairmaire, 1905/ Des. G. Flores 2006] is the lectotype hereby designated.

Notes. There is no indication in the original description about how many specimens were used for the description. This specimen and the place of collection (Catamarca) agree with the description by Fairmaire (1905). This was the only type specimen of this species that Peña (1985) found and examined in his revision of *Psectrascelis*.

Genus *Entomoderes* Solier, 1836

Entomoderes pustulosus Fairmaire

Entomoderes pustulosus Fairmaire, 1905: 298.

Type series of *Entomoderes pustulosus* (MACN). One specimen, with labels: [Rca. Argentina/ Prov. Catamarca/ II-1893/ C. Bruch] [Typus] [*Entomoderes pustulosus* Fm. n. sp. (handwritten by Fairmaire)] [Syntypus (handwritten by Bachmann)] [Lectotypus/ *Entomoderes pustulosus* / Fairmaire, 1905/ Des. G. Flores 2006] is the lectotype by present designation.

Notes. There is no indication in the original description of how many specimens were used for the description. This specimen and the place of collection (Catamarca) agree with the description by Fairmaire (1905). This was the only type specimen of this species that Flores and Roig-Juñent (1997) found and examined in their revision of *Entomoderes*.

Tribe Scotobiini

Genus *Scotobius* Germar, 1824

Scotobius caraboides Fairmaire

Scotobius caraboides Fairmaire, 1905: 289.

Type series of *Scotobius caraboides* (MACN). One specimen, with labels: [Rep. Argentina/ Prov. Mendoza/ I-1901/ C. Bruch] [Typus] [*Scotobius caraboides*/ Tipo Fairm. (handwritten by Bruch)] [*Scotovius* [sic] *caraboides*/ Fm n. sp. (handwritten by Fairmaire)] [Lectotypus/ *Scotobius caraboides*/ Fairmaire, 1905/ Des. G. Flores 2006] is here designated lectotype.

Notes. There is no indication in the original description about how many specimens were used for the description. This specimen and the place of collection (Mendoza) agree with the description by Fairmaire (1905).

Comments. Kulzer (1955: 438) stated that he did not examine the type specimen(s) of *Scotobius caraboides* which is deposited in the MACN, and he redescribed this species examining two specimens of the Gebien's collection from San Rafael, Mendoza. Among the abundant material of this species housed in the IADIZA, I consign its geographical distribution to Mendoza and Neuquen provinces, endemic to Payunia district within the Central Patagonia biogeographic province (Morrone *et al.* 2002).

Scotobius cribricollis Fairmaire

Scotobius cribricollis Fairmaire, 1905: 289.

Type series of *Scotobius cribricollis* (MACN). One specimen, with labels: [Rep. Argentina/ Prov. Salta/ III-1897/ C. Bruch] [Typus] [*Scotobius cribricollis*/ Tipo Fairm. (handwritten by Bruch)] [*Scotobius*

cribricollis/ Fm n. sp. (handwritten by Fairmaire)] [Lectotypus/ *Scotobius*/ *cribricollis*/ Fairmaire, 1905/ Des. G. Flores 2005] is the lectotype hereby designated.

Notes. There is no indication in the original description about how many specimens were used for the description. This specimen and the place of collection (Salta) agree with the description by Fairmaire (1905).

Comments. Kulzer (1955: 441) synonymized *Scotobius cribricollis* with *S. planatus* Erichson examining two specimens of *S. cribricollis* from Salta, one in the MNHN and the other one at the Museum G. Frey (now deposited in the Natural History Museum Basel, Switzerland). However, Kulzer (1955: 441) did not examine and did not mention the location of the type specimen(s) of *Scotobius cribricollis*. A future revision of the genus should include the study of this lectotype, deposited in the MACN.

Scotobius quadricostatus Fairmaire

Scotobius quadricostatus Fairmaire, 1905: 289.

Type series of *Scotobius quadricostatus* (MACN). One specimen, with labels: [Rep. Argentina/ Prov. Catamarca/ XI-1897/ C. Bruch] [Typus] [*Scotobius*/ 4-costatus/ Tipo Fairm. (handwritten by Bruch)] [*Scotobius*/ 4-costatus/ Fm n. sp. (handwritten by Fairmaire)] [Lectotypus/ *Scotobius*/ *quadricostatus*/ Fairmaire, 1905/ Des. G. Flores 2005] is the lectotype by present designation.

Notes. There is no indication in the original description about how many specimens were used for the description. This specimen and the place of collection (Catamarca) agree with the description by Fairmaire (1905).

Comments. Kulzer (1955: 453) stated that he did not examine the type specimen(s) of *Scotobius quadricostatus* and because this species was unknown to him he did not include it in his key to the species of *Scotobius*. A future revision of the genus should include the study of this lectotype, deposited in the MACN.

ACKNOWLEDGEMENTS

I gratefully acknowledge curators for the loan of type material; special thanks are due to Claude Girard (MNHN), Arturo Roig Alsina, Luis Compagnucci, Axel Bachmann (MACN), Analía Lanteri, Nora Cabrera (MLPA), and Mario Elgueta (MNNC) for their hospitality and help in finding the old collections during my visits in Paris, Buenos Aires, La Plata, and Santiago museums; Julio Ferrer for teaching me to recognize

Fairmaire's handwriting; Luis E. Acosta for his advise on nomenclatural questions and for suggestions for improving this paper; Nelly Horak for correction of the English version; to the reviewers for suggestions for improving this paper. This study was supported by the Consejo Nacional de Investigaciones Científicas y Técnicas (CONICET) and by a grant of the BBVA Foundation, Spain: "Diseño de una red de reservas para la protección de la biodiversidad en América del Sur Austral utilizando modelos predictivos de distribución con taxones hiperdiversos".

REFERENCES

- Arnett, R. H., Samuelson, G. A. and G. M. Nishida. 1993. The Insect and Spider Collections of the World. 2nd edition. Sandhill Crane Press, Gainesville, Florida, 310 pp.
- Berg, C. 1884. (Synonymies). Bulletin de la Société Entomologique de France, 1884: 98–99.
- Berg, C. 1889. Quadraginta Coleoptera nova Argentina (Tenebrionidae). Anales de la Universidad de Buenos Aires, 4: 127–145.
- Burmeister, H. 1875. Melanosoma Argentina. Stettiner Entomologische Zeitung, 36: 457–500.
- Burmeister, H. 1877. Nachtrag zur Gattung *Nyctelia*. Stettiner Entomologische Zeitung, 38: 69–71.
- Cabrera, A. L. and A. Willink. 1980. Biogeografía de América Latina, 2nd ed. Monografía N°13, Serie Biología, OEA. Secretaría General de la OEA, Washington, D.C., 122 pp.
- Camousseight, A. 1980. Catálogo de los Tipos de Insecta depositados en la colección del Museo Nacional de Historia Natural (Santiago, Chile). Publicación ocasional N° 32 Museo Nacional de Historia Natural, 45 pp.
- Erichson, W. F. 1834. Coleoptera. In: Meyen, F. J. F., Beiträge zur Zoologie, gesammelt auf einer Reise um die Erde. Nova Acta Physico-Medica Academiae Caesareae-Leopoldino-Carolinae, Naturae Curiosorum, Bonn. 16 (Suppl. 1): 219–276.
- Eschscholtz, J. F. 1829. Zoologischer Atlas, enthaltend Abbildungen und Beschreibungen neuer Theirarten, während des Flottcapitains von Kotzebue zweiter Reise um die Welt, auf der Russisch-Kaiserlichen Kriegsschlupp *Predpriaetië* in the Jahren 1823–1826. Drittes Heft, 18 pp, pls. 11–15. Berlin.
- Fairmaire, L. 1883a. Note sur quelques Coléoptères de Magellan et de Santa Cruz. Annales de la Société Entomologique de France, ser. 6, vol. 3: 483–506.
- Fairmaire, L. 1883b. Description de quelques Coléoptères de la Patagonie et de la République Argentine. Annales de la Société Entomologique de France, ser. 6, vol. 3: 507–516.
- Fairmaire, L. 1902. Diagnosis de Coléoptères hétéromères recueillis par M. G. A. Baer au Pérou. Bulletin de la Société Entomologique de France, 1902, N° 7: 148–151.
- Fairmaire, L. 1903. Coléoptères Hétéromères recueillis par M. Baer dans le Haut-Pérou et le Tucuman. Annales de la Société Entomologique de France, 72: 461–468.
- Fairmaire, L. 1904. Descriptions de Coléoptères de la République Argentine. Bulletin de la Société Entomologique de France, 1904: 61–64.

- Fairmaire, L. 1905. Description de Coléoptères Hétéromères de la République Argentine. *Annales de la Société Entomologique de France*, 74: 289–303.
- Flores, G. E. 1997. Revisión de la tribu Nycteliini (Coleoptera: Tenebrionidae). *Revista de la Sociedad Entomológica Argentina*, 56: 1–19.
- Flores, G. E. and S. Roig Juñent. 1997. Systematic revision of the Neotropical genus *Entomoderes* Solier (Coleoptera: Tenebrionidae). *Entomologica Scandinavica*, 28(3): 141–162.
- Gay, C. and A. J. J. Solier. In: Solier, A. J. J. 1840. Essai sur les Collaptérides. 11^e Tribu. Praocites. *Annales de la Société Entomologique de France*, 5: 207–370.
- Gebien, H. 1910. Tenebrionidae. II: 167–354. In: Junk W. & Schenking S. (eds.): *Coleopterorum Catalogus* 18 pts. 15, 22, 28, 37. W. Junk, Berlin, 742 pp.
- Gebien, H. 1937. Katalog der Tenebrioniden. Teil I. Pubblicazioni del Museo Entomologico Pietro Rossi. Duino, 2: 505–883.
- Gebien, H. 1938. Katalog der Tenebrioniden. Teil II. Mitteilungen der Münchner Entomologischen Gesellschaft, 28(3): 397–428.
- Germain, P. 1855. Descripción de Coleópteros de diversas especies que no se hallan en la obra del señor Gay. *Anales de la Universidad de Chile*, 12: 386–407.
- Germar, E. F. 1824. *Insectorum species novae aut minus cognitae, descriptionibus illustratae*, vol. 1, Coleoptera, Haendel & Sons, Halae. 624 pp.
- Guérin-Méneville, F. E. 1834. Matériaux pour une classification des Mélasomes. *Magazine de Zoologie* 3^e. année: 1–39.
- ICZN. 1999. International Code of Zoological Nomenclature. Fourth Edition. Adopted by the International Union of Biological Sciences. International trust for Zoological Nomenclature, London, xxix + 306 pp.
- Kaszab, Z. 1969. The scientific results of the Hungarian soil Zoological Expeditions to South America. 17. Tenebrioniden aus Chile (Coleoptera). *Opuscula Zoologica Budapest*, 9(2): 291–337.
- Kulzer, H. 1955. Monographie der Scotobiini (Zehnter Beitrag zur Kenntnis der Tenebrioniden). *Entomologische Arbeiten aus dem Museum Georg Frey*, 6: 383–478.
- Kulzer, H. 1958. Monographie der südamerikanischen Tribus Praocini (Col.) (16 Beitrag zur Kenntnis der Tenebrioniden). *Entomologische Arbeiten aus dem Museum Georg Frey*, 9: 1–105.
- Kulzer, H. 1963. Revision der südamerikanischen Gattung *Nyctelia* Latr. (Col. Teneb.) (24 Beitrag zur Kenntnis der Tenebrioniden). *Entomologische Arbeiten aus dem Museum Georg Frey*, 14: 1–71.
- Kuschel, G. 1969. Biogeography and ecology of South American Coleoptera. In: Fittkau, E. J., Illies, J., Klinge, H., Schwabe, G. H. and H. Sioli (eds): *Biogeography and ecology in South America*, Vol. 2. Junk, The Hague, 709–722.
- Latreille, P. A. 1825. *Familles Naturelles du Règne Animal*. J. B. Baillière Libraire, Paris, 570 pp.
- Morrone, J. J., Roig-Juñent, S. and G. E. Flores. 2002. Delimitation of biogeographic districts in central Patagonia (southern South America), based on beetle distributional patterns (Coleoptera: Carabidae and Tenebrionidae). *Revista del Museo Argentino de Ciencias naturales*, n.s. 4: 1–6.
- Peña, L. E. 1985. Revisión del género *Psectrascelis* Solier (Coleoptera: Tenebrionidae). *Revista Chilena de Entomología*, 12: 15–51.
- Philippi, R. A. and F. H. Philippi. 1864. Beschreibung einiger neuen Chilenischen Käfer. *Stettiner Entomologische Zeitung*, 25(10–12): 313–406.
- Roig Juñent, S., Flores, G., Claver, S., Debandi, G. and A. Marvaldi. 2001. Monte Desert (Argentina): insect biodiversity and natural areas. *Journal of Arid Environments*, 47(1): 77–94.
- Solier, A. J. J. 1836. Essai sur les Collaptérides. 5^e Tribu. Nyctélites. *Annales de la Société Entomologique de France*, 5: 303–355.
- Solier, A. J. J. 1840. Essai sur les Collaptérides. 11^e Tribu. Praocites. *Annales de la Société Entomologique de France*, 9: 207–370.
- Solier, A. J. J. 1851. Fauna chilena: Coleópteros. In: Gay, C.: *Historia Física y Política de Chile*. Zoología, Vol. 5. Imprenta de Maulde et Renou, Paris, 183–204.

Received: May 25, 2007

Accepted: June 22, 2007