

# Angle-dependent radiative grain alignment

## Confirmation of a magnetic field – radiation anisotropy angle dependence on the efficiency of interstellar grain alignment

B-G Andersson<sup>1,\*</sup>, O. Pintado<sup>2,\*</sup>, S. B. Potter<sup>3</sup>, V. Straižys<sup>4</sup>, and M. Charcos-Llorens<sup>1</sup>

<sup>1</sup> USRA/SOFIA Science Center, NASA Ames Research Center, Mail Stop N211-3, Moffett Field, CA 94035, USA  
e-mail: bg@sofia.usra.edu

<sup>2</sup> Instituto Superior de Corellación Geológica, CONICET, Miguel Lillo 205, 4000 San Miguel de Tucumán, Argentina

<sup>3</sup> South African Astronomical Observatory, PO Box 9, Observatory 7935, Cape Town, South Africa

<sup>4</sup> Institute of Theoretical Physics and Astronomy, Vilnius University, Goštauto 12, 01108 Vilnius, Lithuania

Received 9 July 2011 / Accepted 24 August 2011

### ABSTRACT

**Context.** Interstellar grain alignment studies are currently experiencing a renaissance due to the development of a new quantitative theory based on radiative alignment torques (RAT). One of the distinguishing predictions of this theory is a dependence of the grain alignment efficiency on the relative angle ( $\Psi$ ) between the magnetic field and the anisotropy direction of the radiation field. In an earlier study we found observational evidence for such an effect from observations of the polarization around the star HD 97300 in the Chamaeleon I cloud. However, due to the large uncertainties in the measured visual extinctions, the result was uncertain.

**Aims.** By acquiring explicit spectral classification of the polarization targets, we have sought to perform a more precise reanalysis of the existing polarimetry data.

**Methods.** We have obtained new spectral types for the stars in our for our polarization sample, which we combine with photometric data from the literature to derive accurate visual extinctions for our sample of background field stars. This allows a high accuracy test of the grain alignment efficiency as a function of  $\Psi$ .

**Results.** We confirm and improve the measured accuracy of the variability of the grain alignment efficiency with  $\Psi$ , seen in the earlier study. We note that the grain temperature (heating) also shows a dependence on  $\Psi$  which we interpret as a natural effect of the projection of the grain surface to the illuminating radiation source. This dependence also allows us to derive an estimate of the fraction of aligned grains in the cloud.

**Key words.** polarization – dust, extinction – ISM: magnetic fields

## 1. Introduction

Broadband optical/infrared interstellar polarization was first detected in 1949 (Hall 1949; Hiltner 1949b,a) and was already from the start assumed to be associated with dichroic extinction due to asymmetric dust grains aligned with their long axis across the magnetic field direction (Hiltner 1949a; Spitzer & Tukey 1949). However, despite over 60 years of efforts, the details of the grain alignment process are still not fully understood. A quantitative understanding of the physical processes responsible for the grain alignment and hence polarization will allow us not only a better understanding of interstellar magnetic fields, by e.g. putting the Chandrasekhar-Fermi method (Chandrasekhar & Fermi 1953) on a more solid footing, but will likely also provide new probes of the characteristics of the dust.

The long standing “text book” explanation for the alignment, via paramagnetic relaxation in rotating grains, was put forward in the seminal paper by Davis and Greenstein (Davis & Greenstein 1951: DG). Over the following decades, various

modifications were then proposed to enhance the efficiency of this mechanism, including proposals for enhancing the magnetic susceptibility of the material (Jones & Spitzer 1967; Mathis 1986) and enhanced torques on the grains due to particle ejections from the grain surface (Purcell 1979). Generally, the driving mechanism for the grain spin-up in the various modifications to the DG mechanism are fixed in the grain’s coordinate system (including the above so called “Purcell rockets” if the particle ejection sites are restricted to specific locations on the grain surface).

Another long-standing possibility to produce grain alignment is through mechanical alignment in situations with relative motion between the gas and dust (Gold 1952; Lazarian & Efrimsky 1996). This flow will tend to cause the grains to align themselves with as small a collisional cross-section as possible to the flow (Lazarian & Efrimsky 1996). Because most large scale flows in the ISM (including winds from hot stars) tend to be ionized, these flows are usually constrained to be along the magnetic field lines and therefore cause grain alignment with the long axis of the grain along the magnetic field direction and polarization perpendicular to the magnetic field direction.

Starting in the 1990s several authors, including Lazarian & Draine (1999a,b) and Roberge (2004) put the paramagnetic

\* Visiting Astronomer, Complejo Astronómico El Leoncito, operated under agreement between the Consejo Nacional de Investigaciones Científicas y Técnicas de la República Argentina and the National Universities of La Plata, Córdoba and San Juan.

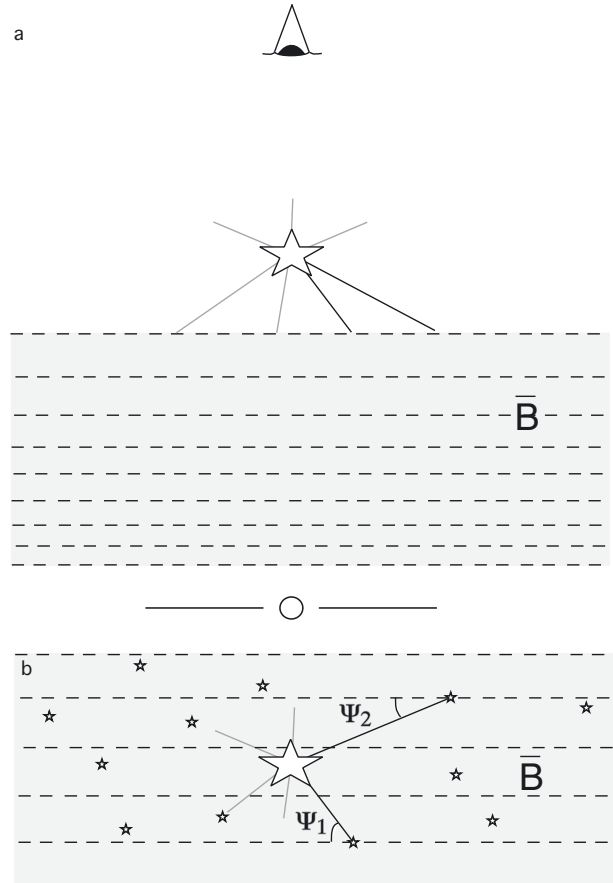
relaxation paradigm into doubt by showing that, due to the internal energy modes of the grains, a dust grain will tend to change its orientation in space on relatively short time scales. Since such a “flip” will cause a torque fixed in the grain to drive the grain rotation in the opposite direction (in a space-based coordinate system) the grain never achieves a significant angular momentum, making paramagnetic relaxation alignment inefficient.

Parallel to the discovery of these challenges for the classical DG model, an alternative theory of interstellar grain alignment was being worked out by Bruce Draine, Alexander Lazarian and their coworkers (e.g. [Draine & Weingartner 1997](#); [Lazarian & Hoang 2007](#)). Based on early work by [Dolginov & Mitrofanov \(1976\)](#) they showed that an irregular grain with a net helicity will be spun up by the differential scattering of the left and right-hand circular components in an external light source. Over many periods of Larmor precession, the light can then also align the grain with their long axis perpendicular to the magnetic field, without any contribution from paramagnetic relaxation. Because helicity is invariant on reflection, this mechanism is not susceptible to the limitations by the “thermal flipping” of the grain. The sole environmental requirement for alignment by this mechanism is that the radiation field be anisotropic. In the interstellar medium, this is almost always the case. Hence, while the physical mechanisms responsible for the grain alignment are quite distinct, to first order extended DG alignment and radiative alignment provide the same observational prediction; namely polarization parallel to the projected magnetic field direction.

Radiative alignment torque (RAT) theory has matured over the last decade and is now providing a number of specific, testable, predictions ([Lazarian & Hoang 2007](#)). One such prediction, which is especially attractive for probing the validity of the theory, since it is unique to RAT theory, is that the alignment efficiency, but not the polarization angle, should vary with the angle between the magnetic field and the radiation field anisotropy ( $\Psi$ ; see [Lazarian & Hoang 2007](#)). One way to observationally probe this prediction is to find dust grains for which the dominant radiation source is a localized source (a star) and measure the alignment efficiency for background stars projected at different position angles around the source star. Figure 1 illustrates the geometry of the situation.

We found such a combination of star and nearby dust in the Chamaeleon I cloud and showed in [Andersson & Potter \(2010\)](#), combining new polarimetry with the multi-band polarimetry from [Whittet \(1992\)](#), that the grain alignment is indeed enhanced at small projected distances to the central source star (in this case HD 97300). A preliminary study of the angle dependence of the alignment was also carried out in [Andersson & Potter \(2010\)](#), but was limited by the fact that, for most of our field stars, the spectral classification and therefore the determinations of the visual extinctions on each line of sight, had to be accomplished using near infrared (NIR; 2MASS) photometry alone. Because the small color excesses in the NIR and uncertainties in the reddening vector slope, the spectral classifications typically had uncertainties of a full spectral class, translating to uncertainties on the visual extinctions of  $\sim 1$  mag. Despite these limitations, we detected a relative grain alignment enhancement for position angles where the magnetic field and radiation field anisotropy were parallel, in agreement with the predictions of RAT theory.

In order to test whether the large uncertainties in the derived visual extinctions confused the analysis, we here present a reanalysis of the polarization data from [Andersson & Potter \(2010\)](#), using new explicit spectral classifications of the field star acquired at the the “Complejo Astronomico de Leoncito” (CASLEO) in Argentina.



**Fig. 1.** The geometry used to probe the effects of the relative orientation of the magnetic field and radiation field anisotropy is illustrated. In the two panels, the dashed lines illustrate an idealized magnetic field. **a)** – Side view: a bright source is located close to and in front of an underlying interstellar cloud surface, such that its radiation locally dominates over the diffuse radiation field. **b)** – *En face* view: by probing the polarization of background field stars we can probe the effects of angle dependent radiative alignment torque (RAT) grain alignment (adapted, with permission of the AAS, from [Andersson & Potter 2010](#)).

## 2. Observations, data reduction and analysis

We used the REOSC spectrometer ([Pintado & Adelman 1996](#)) on the 2.15 m telescope at the CASLEO on the nights of 2011, March 4–6. The spectrometer was used with the 300 lines/mm grating, producing a measure wavelength coverage of  $\lambda\lambda 3631\text{--}7128$  Å with a spectral resolution of  $\Delta\lambda = 3.4$  Å/pixel. The detector used was a thinned TEK 1024 × 1024 CCD with 24 μm pixels. Wavelength calibration was achieved using exposures of thorium-argon hollow cathode lamps. No attempt was made to achieve photometric calibration of the data as the sky conditions did not warrant it.

The data reduction was achieved using standard procedures and routines in the IRAF environment. After bias and flat-field corrections, the two-dimensional spectra were traced and integrated across the dispersion direction and extracted into one-dimensional form. The extracted spectra were then wavelength calibrated, normalized and compared, interactively, to the standard sequence from [Jacoby et al. \(1984\)](#). The classifications were redone independently several times, by two of the authors. The resulting spectral classifications are listed in Table 1. Also listed in Table 1 are the derived colour excesses, based on Tycho ([Høg et al. 2000](#)) photometry and intrinsic colours

Table 1. Spectral types and photometry for stars in the region.

ID	RA (2000)	Dec (2000)	V [mag]	B - V [mag]	Sp. class <sup>a</sup>	Source <sup>b</sup>	R <sub>V</sub> <sup>c</sup>	A <sub>V</sub> [mag]
TYC 9414-0186-1	10:59:06.97	-77:01:40.30	11.66 ± 0.15	1.26 ± 0.32	G9 V (2)	A	5.58 ± 0.72	2.76 ± 0.26
TYC 9410-1931-1	10:59:29.16	-76:11:15.50	11.29 ± 0.11	1.72 ± 0.32	G4 III (1)	A	0.86 ± 0.45	0.77 ± 0.14
TYC 9410-2587-1	10:59:39.81	-76:24:15.60	11.17 ± 0.08	0.51 ± 0.10	G2 V (1)	A	—	—
TYC 9410-0532-1	11:01:25.94	-76:45:07.40	9.83 ± 0.03	0.47 ± 0.04	A9 V (1)	A	4.43 ± 0.29	0.87 ± 0.09
HD 95883	11:01:28.86	-75:39:51.98	7.33 ± 0.01	0.13 ± 0.02	A2 Vn... (1)	B	3.55 ± 0.47	0.28 ± 0.08
TYC 9414-0642-1	11:03:11.57	-77:21:04.28	11.48 ± 0.11	1.11 ± 0.22	G2 V (1)	A	6.32 ± 2.96	3.01 ± 0.17
TYC 9414-0150-1	11:03:31.68	-76:56:04.89	10.69 ± 0.05	0.37 ± 0.06	A2 (2)	C	4.97 ± 0.32	1.61 ± 0.17
TYC 9410-2633-1	11:03:36.31	-75:59:03.40	10.76 ± 0.07	0.55 ± 0.09	G4 V (2)	A	0.18 ± 6.15	<0.09
TYC 9410-2362-1	11:04:10.22	-76:22:18.20	10.89 ± 0.06	0.73 ± 0.09	A7 V (2)	A	1.30 ± 0.36	0.68 ± 0.17
TYC 9410-2504-1	11:04:37.92	-76:19:00.90	11.37 ± 0.10	0.63 ± 0.15	F8 V (1)	A	9.22 ± 1.53	1.03 ± 0.13
TYC 9410-2172-1	11:04:43.80	-76:16:45.20	11.47 ± 0.11	0.90 ± 0.21	F5 V (2)	A	1.21 ± 0.76	0.55 ± 0.28
TYC 9410-1907-1	11:06:07.52	-75:55:09.10	10.58 ± 0.05	0.94 ± 0.08	F8 III (1)	A	2.72 ± 0.30	1.09 ± 0.12
TYC 9410-2117-1	11:08:23.42	-75:56:34.20	11.12 ± 0.08	1.03 ± 0.16	M2 V (1)	A	—	—
N0136-0067899	11:09:07.70	-76:18:14.80	11.87 ± 0.10	1.10 ± 0.10	K7 III (2)	A	—	—
TYC 9410-2426-1	11:12:50.73	-75:58:07.00	9.82 ± 0.03	0.48 ± 0.03	F0 (2)	C	5.02 ± 0.45	0.93 ± 0.14
PPM 371023	11:12:54.83	-75:52:11.93	9.15 ± 0.02	1.40 ± 0.04	K5 (2)	C	2.25 ± 4.14	<0.44
TYC 9410-2449-1	11:13:26.29	-76:19:23.30	11.60 ± 0.12	0.61 ± 0.17	G2 V (2)	A	—	—
TYC 9414-0649-1	11:13:48.08	-77:50:12.37	11.59 ± 0.14	1.26 ± 0.30	G7 III (1)	A	2.62 ± 0.98	0.91 ± 0.17
TYC 9414-0462-1	11:14:09.38	-77:14:49.50	10.93 ± 0.08	1.85 ± 0.29	K3 III (2)	A	3.30 ± 0.62	1.90 ± 0.36
TYC 9414-0260-1	11:14:11.23	-77:01:15.10	10.96 ± 0.07	0.51 ± 0.08	F2 V (2)	A	8.68 ± 0.77	1.32 ± 0.22
TYC 9414-0392-1	11:14:29.64	-77:07:06.40	11.19 ± 0.09	0.73 ± 0.13	G2 V (1)	A	4.64 ± 1.46	0.47 ± 0.11
TYC 9414-0046-1	11:14:45.15	-76:58:20.80	11.33 ± 0.09	1.22 ± 0.21	G4 III (1)	A	3.44 ± 0.61	1.35 ± 0.14
TYC 9410-1825-1	11:15:17.32	-76:08:56.70	11.70 ± 0.12	0.30 ± 0.14	B9 V (1)	A	3.62 ± 0.51	1.26 ± 0.19
TYC 9410-2634-1	11:15:30.57	-76:29:02.30	11.68 ± 0.14	1.37 ± 0.30	F8 V (1)	A	1.01 ± 0.44	0.86 ± 0.17
TYC 9410-2731-1	11:15:57.31	-76:29:08.50	11.27 ± 0.10	2.23 ± 0.37	M0 III (2)	A	3.04 ± 0.65	2.04 ± 0.47
TYC 9410-2612-1	11:17:30.79	-76:27:07.90	10.07 ± 0.04	2.03 ± 0.17	M3 III (1)	A	3.02 ± 0.67	1.27 ± 0.56
TYC 9414-0080-1	11:18:19.91	-77:07:16.70	9.98 ± 0.03	1.10 ± 0.06	G7 III (2)	A	2.99 ± 0.40	0.56 ± 0.07
TYC 9410-0488-1	11:18:21.19	-76:40:56.00	10.80 ± 0.07	2.27 ± 0.29	K6 III (1)	A	1.22 ± 0.46	0.91 ± 0.13
TYC 9410-1231-1	11:19:54.76	-75:38:38.21	10.27 ± 0.04	0.52 ± 0.05	A5 (2)	C	1.87 ± 0.32	0.69 ± 0.14
TYC 9415-0403-1	11:20:07.20	-76:55:24.00	11.69 ± 0.12	0.43 ± 0.15	A6 V (1)	A	3.72 ± 0.70	0.94 ± 0.15
TYC 9411-0934-1	11:20:47.70	-76:37:11.30	11.73 ± 0.15	1.69 ± 0.35	K4 III (2)	A	4.19 ± 1.57	1.32 ± 0.69
TYC 9411-1630-1	11:21:50.85	-76:37:25.70	10.38 ± 0.05	1.92 ± 0.19	K4 III (2)	A	2.44 ± 0.81	1.32 ± 0.67
HD 99418	11:24:51.67	-76:36:42.59	9.22 ± 0.02	1.32 ± 0.04	G9 III: (1)	B	4.26 ± 0.18	1.49 ± 0.11
HD 99558	11:25:47.95	-76:30:29.15	9.13 ± 0.02	1.19 ± 0.03	K0 III (1)	B	4.90 ± 0.53	0.91 ± 0.23
HD 99591	11:26:04.34	-75:43:34.95	9.37 ± 0.02	0.54 ± 0.03	F7 V (2)	C	0.51 ± 10.18	0.03 ± 0.25

**Notes.** <sup>(a)</sup> The number in parenthesis gives the estimated uncertainty of the spectral class, in sub-classes; <sup>(b)</sup> source of spectral classification: A – this work; B – Michigan Spectral Survey (Houk & Swift 1999), C – SIMBAD database; <sup>(c)</sup> in a few cases unphysical results were obtained for R<sub>V</sub>. These likely indicate non-standard spectral classes. Those values have been omitted and marked by – and the resulting visual extinctions were not used in the analysis.

from Cox (2000). In a small number of cases Tycho photometry is not available, and in those cases we have instead used NOMAD (Zacharias et al. 2005) photometry. Visual extinctions ( $A_V$ ) were calculated using total-to-selective extinction ( $R_V$ ) values derived, from  $A_V = R_V \times E_{B-V}$ , using the relation:  $R_V = 1.1 \times E_{V-K}/E_{B-V}$  from Whittet & van Breda (1978).

As discussed in Andersson & Potter (2007), the wavelength of the maximum of the polarization curve ( $\lambda_{\max}$ ) is a sensitive probe of the grain alignment and one that is immune to the magnetic field topology along the line of sight. The absolute value of  $\lambda_{\max}$  depends on the over-all grain size distributions and likely on the color and intensity of the local diffuse interstellar radiation field (ISRF), but as shown by Andersson & Potter (2007) the slope in the  $\lambda_{\max}$  vs.  $A_V$  relation is universal. Hence we can measure the relative grain alignment enhancement in a region by deriving the average relationship between  $\lambda_{\max}$  and  $A_V$  for field stars behind the cloud in question and then probing for localized deviations from this average relationship. We did this in Andersson & Potter (2007, 2010) and found that in Chamaeleon I, but beyond the region around HD 97300 (where its radiation field dominates that of the diffuse radiation), a linear relationship is found:

$$\langle \lambda_{\max}(A_V) \rangle = (0.527 \pm 0.006) + (0.033 \pm 0.003) \times A_V. \quad (1)$$

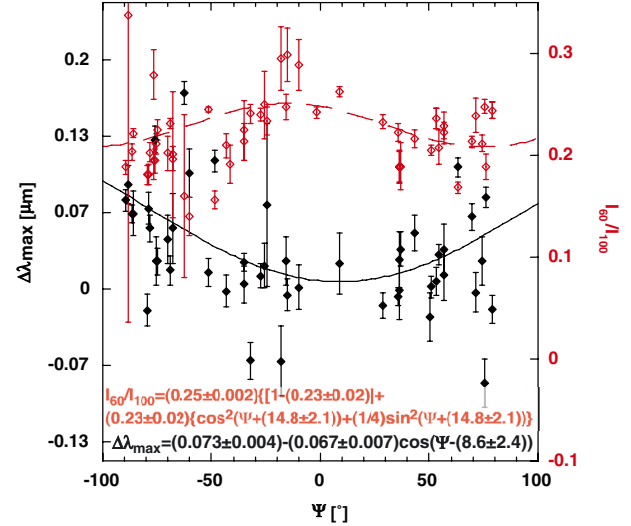
### 3. Results and discussion

#### 3.1. Stellar classification

The uncertainties for the spectral classifications are based on estimates from the two independent classifiers. Usually the results by the individual classifiers agreed to within the assigned uncertainties. The luminosity class assignments are less certain. For early-type star (up to F) we assume that the stars are on the main sequence. For later stellar types (G and beyond), we used the known distance to the Chamaeleon I cloud ( $d = 150 \pm 15$  pc, Whittet et al. 1997), spectroscopic parallaxes for luminosity classes III and V, and the measured colour excesses, derived for each luminosity class, to set the luminosity class. The restriction to these two luminosity classes could be a source of some error, in a few cases where luminosity classes IV (or I) might have been more appropriate. Specifically, TYC 9410-1931-1 and TYC 9414-0046-1 have been assigned a spectral class of G4 III. However, this spectral/luminosity class is located in the Hertzsprung gap of the HR diagram where the number of stars is quite small. As noted below, some stars show colour excess ratios that would indicate that they are part of binaries or show the effects of peculiar circumstellar material, or other effects yielding non-standard colours. The former of these two stars falls in this category.

For five stars in our sample the colour excess  $E_{B-V}$  is consistent with zero and we have excluded these stars from the subsequent analysis. Similarly, for six stars the colour excess ratio  $E_{V-K}/E_{B-V}$  is significantly smaller than the nominal value 2.74, assuming a standard interstellar extinction curve and a  $R_V$  value of 3.1 (Cox 2000). After checking the spectral classifications for these stars we conclude that the discrepancy is in the measured colours and may indicate binarity, or other non-standard spectral behaviour. We have therefore excluded also these stars from the analysis of the grain alignment variations.

While a systematic increase in  $R_V$  is expected for grain growth, no clear correlation is seen between  $R_V$  and column density (e.g.  $I_{100}$ ). This is likely because the total column densities in our sample are still fairly small.



**Fig. 2.** The variations in grain alignment efficiency, as probed by the location of the peak in the polarization curve, is shown as a function of the relative angle between the magnetic field and radiation field anisotropy:  $\Psi$  (filled, black, diamonds). Also shown are the variations in the FIR ratio  $I_{60}/I_{100}$  (open, red, diamonds). Both show a variation with  $\Psi$ . The change in the grain temperature can be understood in terms of the surface area facing the illuminating star, while the variations in  $\lambda_{\max}$  are consistent with predictions by RAT theory.

#### 3.2. Grain alignment

Figure 2 shows the relative grain alignment efficiencies for the stars in our sample as measured by the above technique in filled (black) diamonds as a function of  $\Psi$  (see Fig. 1):

$$\Delta \lambda_{\max}^i = \lambda_{\max}^i - \langle \lambda_{\max}(A_V^i) \rangle. \quad (2)$$

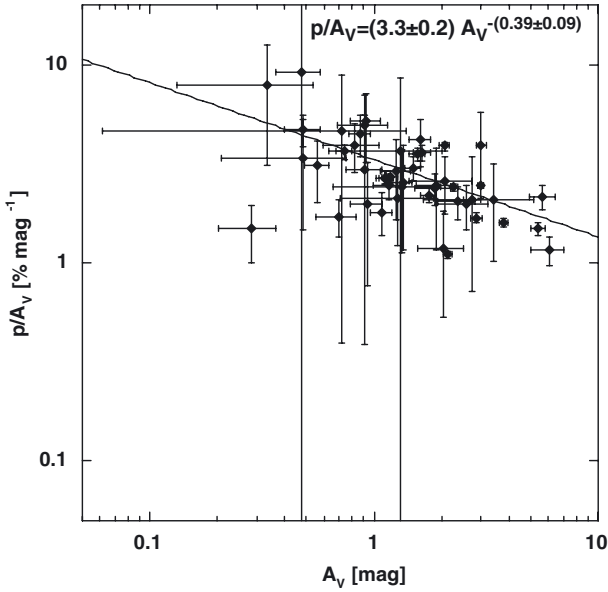
The FIR ratio  $I_{60}/I_{100}$  is also shown, in open (red) diamonds. The FIR data here are from the IRIS reprocessing of the IRAS data (Miville-Deschênes & Lagache 2005). For details see Andersson & Potter (2007).

In Fig. 2 we have over-plotted the best fit of the function  $\Delta \lambda_{\max} = A + B \times \cos(\Psi - \Psi_0)$  where  $\Psi$  is the position angle from the star, relative to the average magnetic field direction in the area, as determined from the polarization maps by McGregor et al. (1994); Andersson & Potter (2010) and  $\Psi_0$  is the symmetry angle of the function (in this case the minimum). We have chosen a simple cosine relation here, since the exact theoretical functional form for the grain alignment depends on several unknown parameters of the grains, the radiation field and the structure of the cloud along the line of sight. With the new and significantly improved visual extinctions for our background stars, we find a statistically significant depression in  $\Delta \lambda_{\max}$   $\Psi_0$  close to 0, in agreement with theoretical predictions. An F-test (Lupton 1993) yields a greater than 99% probability that the two additional parameters in the cosine function are statistically warranted (as compare to a simple average value). The parameters in the current best fit are all within the mutual uncertainties of the best fit in Andersson & Potter (2010). We now find a  $9.5\sigma$  deviation from a null result for the amplitude of the grain alignment enhancement.

The fractional polarization ( $p_{\max}/A_V$ ; Fig. 3) for our combined sample shows a power-law slope  $b = -0.39 \pm 0.09$  consistent, within  $1.2\sigma$  mutual uncertainty, from the results in Whittet et al. (2008):  $b = -0.52 \pm 0.07$ .

As discussed in Andersson & Potter (2010), while we do detect an alignment efficiency enhancement in the direction of the





**Fig. 3.** The fractional polarization ( $p_{\max}/A_V$ ) for the sample is plotted as a function of the visual extinction. The power-law exponent is consistent, within the mutual error-bars, with the one found for deeper lines of sight by Whittet et al. (2008).

magnetic field, relative to the star, we do not see any evidence for a rotation of the polarization angles in this direction, as would be expected for mechanical alignment (see Fig. 9 of Andersson & Potter 2010).

### 3.3. Grain heating

Figure 2 also shows a systematic variation in the  $I_{60}/I_{100}$  ratio as a function of  $\Psi$ . To model this we envision the alignable grains as a system of simple parallelepipeds with two large sides of length  $a$ , and a smaller side of length  $b$  (like a pizza box; Fig. 4). The radiative heating of these grains around the star then takes the form:

$$I \propto \frac{I_0}{r^2} a^2 \left[ \cos^2(\Psi) + \frac{b}{a} \sin^2(\Psi) \right], \quad (3)$$

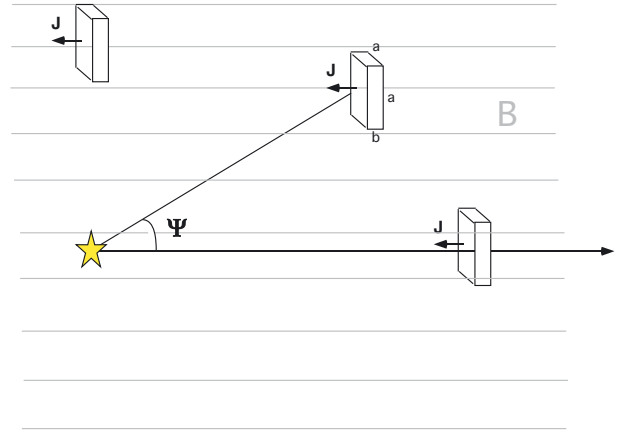
where  $I_0$  is the effective intensity of the central star and  $r$  is the distance between the star and dust grain. Figure 4 illustrates the model geometry. We also need to allow for symmetrical grains that will not show a dependence on the angle  $\Psi$ . As shown by Desert et al. (1990) the  $I_{60}/I_{100}$  ratio shows a roughly linear response to the radiation field strength in the range 1–5 times the local interstellar radiation field. Hence, as a simple first order, heuristical, model we can fit the FIR colour temperature to the function:

$$\frac{I_{60}}{I_{100}}(\Psi) = c_1 [(1 - \epsilon) + \epsilon(\cos^2(\Psi) + (b/a)\sin^2(\Psi))], \quad (4)$$

where  $\epsilon$  is the fraction of aligned, asymmetrical grains and  $b/a$  is the axes ratio of the asymmetrical grains.

The two parameters  $\epsilon$  and  $(b/a)$  are degenerate in the fits. We therefore ran a number of fits using  $\epsilon$  as a free parameter with  $(b/a)^{-1}$  set to  $\sqrt{2}$ , 2, 4 and 6. For these choices of  $(b/a)$  we find  $\epsilon = (0.58 \pm 0.04)$ ,  $(0.34 \pm 0.02)$ ,  $(0.23 \pm 0.02)$  and  $(0.20 \pm 0.02)$ . Figure 2 shows the best fit for  $(b/a)^{-1} = 4$ .

Kim & Martin (1995) present, in their Table 1, the polarization-to-extinction ratio for perfectly aligned oblate



**Fig. 4.** The heating of asymmetrical grains, aligned with the magnetic field (thin, gray, lines) will vary with the angle  $\Psi$ . If only a fraction of the grains are alignable, we can use the variations in the dust temperature to estimate the fraction of aligned grains or the axes ratio of these asymmetric grains.

spheroids with the axes ratios we used in our fits. They also quote the maximum of the measured value of this ratio as  $p_{\max}/\tau = 0.028$ . If we use the ratio of the observed to calculated value in their paper as signifying the required dilution of the aligned oblate spheroids (by unaligned, or fully symmetrical grains), we find that the fractions of aligned grains they predict are 0.56, 0.31, 0.18 and 0.17, very close to the best fit values in our model.

The fitting constant  $c_1$  in Eq. (4) contains the distance from the illuminating star to each line of sight. Our sample is not large enough to conclusively show this dependence for different distance annuli, but splitting the sample in two and fitting the targets nearest to HD 97300 does produce an increased value of  $c_1$ , compared both to the full sample and the more distant half-sample.

Repeating this analysis on the full maps of IRAS data in the Chamaeleon region produces consistent results albeit with larger scatter in the FIR ratio as a function of position angle (in particular, for the annuli  $d = 0.3$ – $0.4$  deg and  $d = 0.4$ – $0.5$  deg, the best fit values for  $\epsilon$  agree, within the error bars, with the ones found for our polarimetry star sample). Further analysis, in particular repeating the experiment for other cloud regions dominated by a near-by star, will be needed to ascertain whether this effect is real or whether it is a statistical aberration in the current data set.

## 4. Conclusions

With the improved observational data, we confirm the preliminary result from Andersson & Potter (2010) that the grain alignment seems to depend on  $\Psi$ , as predicted by RAT theory. This provides an important observational constraint on, and in this case support for, the currently best developed theory for interstellar grain alignment. With further supportive observational tests of the theory, the second-longest standing mystery<sup>1</sup> of interstellar medium astrophysics may be within reach of resolution.

We also find a dependence on  $\Psi$  in the  $I_{60}/I_{100}$  ratio. Since the aligned grains causing the polarization have their major axis perpendicular to the magnetic field, this enhancement in the FIR ratio should be expected simply as a projection effect of the grain surface to the radiation from the central star. Our best fit models

<sup>1</sup> The longest-standing mystery of ISM astrophysics is the nature of the carriers of the diffuse interstellar bands, detected (see Friedman et al. 2011) in 1919 (Heger 1922) and identified as being of interstellar origin in 1936 (Merrill 1936).

of the FIR ratio find that the fraction of aligned grains is very close to that found for theoretical models of the extinction and polarization curves by [Kim & Martin \(1995\)](#).

It is possible that an underlying corrugation of the cloud surface could partly be responsible for the  $\Psi$  dependence. This could happen if a ridge centered on HD 97300 is oriented parallel to the average magnetic field. However, the low estimated magnetic field of the Chamaeleon I cloud,  $B_{\parallel} = 3 \pm 4 \mu\text{G}$  ([Bourke et al. 2001](#)) makes this unlikely. Repeating the experiment in other regions where a localized radiation source dominates the grain illumination will allow such caveats to be addressed.

*Acknowledgements.* We gratefully acknowledge the time allocation and support of the staff of the CASLEO observatory. O.I.P. contribution to this paper was partially supported by PIP0348 by CONICET.

We are grateful to Bill Reach for helpful discussions about the FIR response to grain heating as well as the anonymous referee and the A&A editor for helpful suggestions improving the clarity of the manuscript.

## References

- Andersson, B.-G., & Potter, S. B. 2007, *ApJ*, 665, 369  
 Andersson, B.-G., & Potter, S. B. 2010, *ApJ*, 720, 1045  
 Bourke, T. L., Myers, P. C., Robinson, G., & Hyland, A. R. 2001, *ApJ*, 554, 916  
 Chandrasekhar, S., & Fermi, E. 1953, *ApJ*, 118, 113  
 Cox, A. N. 2000, *Allen's astrophysical quantities*, 4th edn., ed. A. N. Cox (New York: AIP Press; Springer)  
 Davis, L. J., & Greenstein, J. L. 1951, *ApJ*, 114, 206  
 Desert, F.-X., Boulanger, F., & Puget, J. L. 1990, *A&A*, 237, 215  
 Dolginov, A. Z., & Mitrofanov, I. G. 1976, *Ap&SS*, 43, 291  
 Draine, B. T., & Weingartner, J. C. 1997, *ApJ*, 480, 633  
 Friedman, S. D., York, D. G., McCall, B. J., et al. 2011, *ApJ*, 727, 33  
 Gold, T. 1952, *MNRAS*, 112, 215  
 Hall, J. S. 1949, *Science*, 109, 166  
 Heger, M. L. 1922, *Lick Observatory Bulletin*, 10, 141  
 Hiltner, W. A. 1949a, *ApJ*, 109, 471  
 Hiltner, W. A. 1949b, *Science*, 109, 165  
 Høg, E., Fabricius, C., Makarov, V. V., et al. 2000, *A&A*, 355, L27  
 Houk, N., & Swift, C. 1999, *Michigan catalogue of two-dimensional spectral types for the HD Stars* (Ann Arbor: University of Michigan, Department of Astronomy), 5  
 Jacoby, G. H., Hunter, D. A., & Christian, C. A. 1984, *ApJS*, 56, 257  
 Jones, R. V., & Spitzer, Jr., L. 1967, *ApJ*, 147, 943  
 Kim, S.-H., & Martin, P. G. 1995, *ApJ*, 444, 293  
 Lazarian, A., & Draine, B. T. 1999a, *ApJ*, 520, L67  
 Lazarian, A., & Draine, B. T. 1999b, *ApJ*, 516, L37  
 Lazarian, A., & Efrimsky, M. 1996, *ApJ*, 466, 274  
 Lazarian, A., & Hoang, T. 2007, *MNRAS*, 378, 910  
 Lupton, R. 1993, *Statistics in theory and practice* (Princeton, N.J.: Princeton University Press)  
 Mathis, J. S. 1986, *ApJ*, 308, 281  
 McGregor, P. J., Harrison, T. E., Hough, J. H., & Bailey, J. A. 1994, *MNRAS*, 267, 755  
 Merrill, P. W. 1936, *ApJ*, 83, 126  
 Miville-Deschênes, M.-A., & Lagache, G. 2005, *ApJS*, 157, 302  
 Pintado, O. I., & Adelman, S. J. 1996, *A&AS*, 118, 283  
 Purcell, E. M. 1979, *ApJ*, 231, 404  
 Roberge, W. G. 2004, in *Astrophysics of Dust*, ed. A. N. Witt, G. C. Clayton, & B. T. Draine, *ASP Conf. Ser.*, 309, 467  
 Spitzer, L., & Tukey, J. W. 1949, *Science*, 109, 461  
 Whittet, D. C. B. 1992, *Dust in the galactic environment* (Institute of Physics Publishing)  
 Whittet, D. C. B., & van Breda, I. G. 1978, *A&A*, 66, 57  
 Whittet, D. C. B., Prusti, T., Franco, G. A. P., et al. 1997, *A&A*, 327, 1194  
 Whittet, D. C. B., Hough, J. H., Lazarian, A., & Hoang, T. 2008, *ApJ*, 674, 304  
 Zacharias, N., Monet, D. G., Levine, S. E., et al. 2005, *VizieR Online Data Catalog*, 1297