

Molecular analysis of a fragment of bovine leukemia virus *env* gene by Nested-PCR in dairy cows from Pasto, Nariño*

Bibiana Benavides¹ / Sebastián Muñoz² / Carolina Ceriani³

Abstract

Introduction: Routine diagnosis for bovine leukemia is performed using indirect serologic tests, although it is recommended to use polymerase chain reaction (PCR), which allows a reliable diagnosis in early stages and in young animals. Moreover, by amplifying the DNA, it is possible to sequence fragments of the virus, which allows to identify genotypes and to construct phylogenetic trees. **Objective:** To analyze a fragment of the *env* gene of bovine leukemia virus (BLV) isolated from indirect ELISA-positive animals in dairy farms in the municipality of Pasto (Nariño). **Materials and methods:** Once the presence of BLV was established in 48 animals over two years old in seven dairy farms in the municipality of Pasto by indirect ELISA test, a nested PCR test was performed to confirm diagnosis and to sequence a fragment of the *env* gene in positive animals and their daughters. The sequences obtained were compared with the seven genotypes described worldwide by MEGA 6 program. **Results:** The sequences of the compared fragments do not differ from those described; but they allow their grouping into different clusters according to their similarity. The genotypes found in these farms correspond to genotype 1 and 2 described in the literature. **Conclusions:** Only one genotype was found on farms with proper recovery and adequate biosecurity measures, and on farms with less control in management and recovery practices, both genotypes described for the region were evident.

Keywords: dairy farms, envelope gene, leukemia bovine virus, nested-PCR.

* This paper is the result of the research project *Diagnosis of the bovine leukemia virus by polymerase chain reaction (PCR) in positive dairy farms from Pasto, Nariño*, conducted at the Universidad de Nariño from September 2012 to June 2014, financed by the Vicerrectoría de Investigaciones y Relaciones Internacionales (VIPRI) of the University of Nariño, Pasto, Colombia.

- 1 Doctor of Veterinary Medicine. MSc. Professor for the Animal Health Department, Buiatría Research Group, Veterinary Medicine Program, Department of Animal Science, Universidad de Nariño, Pasto, Colombia. [✉ bibibenavides@gmail.com](mailto:bibibenavides@gmail.com)
- 2 Doctor of Veterinary Medicine. Member of the Buiatría Research Group, Veterinary Medicine Program, Universidad de Nariño, Pasto, Colombia.
- 3 Professor for the Department of Biological Sciences, Faculty of Veterinary Science, Universidad Nacional del Centro, Tandil, Argentina.

How to cite this article: Benavides B, Muñoz S, Ceriani C. Molecular analysis of a fragment of bovine leukemia virus *env* gene by nested-PCR in dairy cows from Pasto, Nariño. *Rev Med Vet.* 2017;(33):67-75. doi: <http://dx.doi.org/10.19052/mv.4054>

Análisis molecular de un fragmento del gen *env* del virus de leucosis bovina, por PCR anidada en vacas lecheras de Pasto, Nariño

Resumen

Introducción: El diagnóstico de rutina para la leucosis bovina se realiza con pruebas serológicas indirectas, aunque se recomienda usar la reacción en cadena de la polimerasa (PCR), que permite un diagnóstico confiable en fases iniciales y en animales jóvenes. Además, mediante la amplificación del ADN se pueden secuenciar fragmentos del virus, que permite identificar los genotipos presentes y construir árboles filogenéticos. **Objetivo:** Analizar un fragmento del gen *env* del virus de leucosis bovina (VLB) aislado de animales positivos a ELISA indirecta en fincas lecheras del municipio de Pasto, Nariño. **Materiales y métodos:** Una vez establecida la presencia del VLB en 48 animales mayores de dos años en siete fincas lecheras del municipio de Pasto mediante la prueba de ELISA indirecta, se realizó una prueba de PCR anidada para confirmar el diagnóstico y secuenciar un fragmento del gen *env* en

los animales positivos y sus hijas. Las secuencias obtenidas se compararon con los siete genotipos descritos en el mundo mediante el programa MEGA 6. *Resultados:* Las secuencias de los fragmentos comparados no difieren de las descritas; pero permiten su agrupación en diferentes clústeres de acuerdo con su similitud. Los genotipos encontrados en estas fincas corresponden al genotipo 1 y 2 descritos en la literatura. *Conclusiones:* En las fincas con reposición propia y adecuadas medidas de bioseguridad solo se encontró un genotipo y en las fincas con menor control en las prácticas de manejo y de reposición se encontraron los dos genotipos descritos para la región.

Palabras clave: fincas lecheras, Gen *env*, PCR-anidada, virus de leucosis bovina.

Análise molecular pela reação em cadeia da polimerase de um fragmento do gene *env* do vírus de leucose bovina aninhada em vacas leiteiras de Pasto, Nariño

Resumo

Introdução: O diagnóstico de rotina para a leucose bovina se realiza com provas serológicas indiretas, mesmo que se recomenda usar a reação em cadeia da polimerase (PCR), que permite um diagnóstico confiável em fases iniciais e em animais jovens. Além do mais, mediante a amplificação do ADN se podem sequenciar fragmentos do vírus, que permite identificar os genótipos presentes e construir árvores filogenéticas. *Objetivo:* Analisar um fragmento do gene *env* do vírus de leucose bovina (VLB) isolado de animais positivos a ELISA indireta em fazendas leiteiras do município de Pasto, Nariño. *Materiais e métodos:* Uma vez estabelecida a presença do VLB em 48 animais maiores de dois anos em sete fazendas leiteiras do município de Pasto mediante a prova de ELISA indireta, se realizou uma prova de PCR aninhada para confirmar o diagnóstico e sequenciar um fragmento do gene *env* nos animais positivos e suas filhas. As sequências obtidas foram compararam com os sete genótipos descritos no mundo mediante o programa MEGA 6. *Resultados:* As sequências dos fragmentos comparados não diferem das descritas; mas permitem a sua agrupação em diferentes clusters de acordo com sua similitude. Os genótipos encontrados nestas fazendas correspondem ao genótipo 1 e 2 descritos na literatura. *Conclusões:* Nas fazendas com reposição própria e adequadas medidas de biossegurança somente se encontrou um genótipo e nas fazendas com menos controle nas práticas de manejo e de reposição se encontraram os dois genótipos descritos para a região.

Palavras chave: fazendas leiteiras, Gene *env*, PCR-aninhada, vírus de leucose bovina.

INTRODUCTION

The Bovine Leukemia Virus (BLV) is a retrovirus of the Retroviridae family, Orthoretrovirinae subfamily, and Deltaretrovirus genus. It is known to be a type C retrovirus with global distribution; it induces persistent lymphocytosis and in a number of cases, it produces lymphoid tumors in cattle (1). It is an infectious, chronic and insidious disease that shows a low percentage of animals with

clinical manifestations. The virus requires a long incubation period, generally from 3 to 5 years, and only a small proportion of animals develop tumors (0.1-5%) (2).

Like other complex retroviruses, the BLV genome is flanked by two identical long terminal repeats (LTRs) and contains structural genes *gag*, *pol* and *env* coding respectively, for the viral capsid protein, the RNA-dependent DNA polymerase (the reverse transcriptase) and

the envelope protein (3). The *env* gene encodes for transmembrane gp51 and the envelope glycoprotein gp30, which are essential for viral infectivity and for inducing an immune response in naturally infected cattle (4,5).

The infectivity and/or pathogenicity of BLV may be affected by alterations in the *env* gene, which is considered as one of the most variable regions of the BLV genome (5). The classification of BLV strains into several different genotypes depends on the several restriction sites that this gene contains (6). In addition, it has conserved regions that are involved in the interaction between target cells and the virus. Thus, the differences in virus infectivity, BLV dissemination capacity and progression of illness may be attributed to minor changes in amino acid or nucleotide composition of the envelope protein (7,8).

The *env* gene codifies for the surface envelope glycoprotein gp51 of BLV, which is subjected to immune pressures and selection processes. For this reason, this gene has been found to be appropriate for phylogenetic analysis (9).

The analysis of BLV gp51 *env* gene sequences from different geographic regions has revealed the presence of different genetic groups that correlated with the geographic origin of the isolates (5). Currently, seven genotypes have been identified in South America based on the phylogenetic analysis of the *env* gene (10).

The aim of this study was to analyze BLV isolates by partial sequencing of the *env* gene in BLV isolates from ELISA positive dairy cattle from Pasto, Nariño, Colombia.

MATERIALS AND METHODS

Bovine samples

Blood samples were collected on FTA™ WHATMAN® cards from 18 BLV positive cattle (determined by indirect-ELISA), 24 months old or more, and their 13 daughters from three dairy farms in Pasto (southwestern region of Colombia). Blood was extracted by venipuncture of

the coccygeal vein, and a small drop was placed in each FTA card. The cards were conserved in a cool and dark place until processed.

DNA extraction

DNA was obtained according to the Whatman® protocol: First, a sample disc (3mm) from the dried spot was cut and placed in a PCR amplification tube, then washed with 500µL of sterile water by pulse vortexing 3 times for 5 seconds (the tube should be given moderate manual mixing to disrupt the debris and to aid in washing). The disc was transferred to a new tube containing 30µL of sterile saline solution, ensuring that the disc was completely submerged, and heated at 95 °C for 15 to 30 min. The tube was pulse vortexed approximately 60 times. After that, it was centrifuged for 30 seconds to separate the matrix from the eluate that contains the purified DNA (Whatman FTA Elute Cards. Indicating FTA Elute procedure). The supernatant was refrigerated until processed.

Env amplification

In order to confirm the seropositive cattle, a fragment of the *env* gene was amplified by nested PCR in a Verity DNA Thermal Cycler (Invitrogen). PCR reactions were carried out according to the Virology lab protocol at Universidad Nacional del Centro (8). The first amplification round was briefly developed with 1 µl of template DNA obtained from the FTA cards, and 24 µl of master mix 1. Inner and outer primer sequences were as described in the literature (11). An initial incubation step at 94 °C for 5 min was performed, followed by 24 cycles, each consisting of denaturation at 95 °C for 30 s, annealing at 57 °C for 30 s and extension step at 72 °C for 30 s (external primers, forward and reverse respectively, env5032 5'-TCTGTGCCAAGTCTCCCAGATA-3', env-5608 5'-AACACAACCTCTGGGAAGGGT-3'). An aliquot of 3 µl of the amplified product was directly transferred to a new tube with fresh PCR mix (22 µl) for the second amplification round, under the same conditions, but annealing temperature was raised to 68 °C (internal primers forward and reverse respectively env5099

This unique change in the amino acidic sequence allowed us to build a new phylogenetic tree with only two branches, compared to the reference strain (K02120) (Figure 2).

The optimal tree with the sum of branch length = 0.03099057 is shown (Figure 2). The tree is drawn to scale, with branch lengths (next to the branches) in the same units as those of the evolutionary distances used to infer the phylogenetic tree. The evolutionary distances were computed using the Maximum Composite Likelihood method and are in the units of the number of base substitutions per site. The analysis involved 17 nucleotide sequences. Codon positions included were

1st+2nd+3rd+Noncoding. All positions containing gaps and missing data were eliminated. There was a total of 331 positions in the final dataset.

A phylogenetic tree was built by comparing the nucleotide sequences of the proviruses fragments amplified in this work with the same region of published full-length BLV genomes. The sequence of the amplified fragments did not differ greatly from those already described, but allowed us to locate them in two clusters, BLV genotype 1, together with the strains from Australia, Costa Rica, Japan, Argentina, USA and Brazil, and BLV genotype 2, homologous to an Argentinian strain (Figure 3).

Figure 2. Phylogenetic tree built on the basis of the amino acid sequences

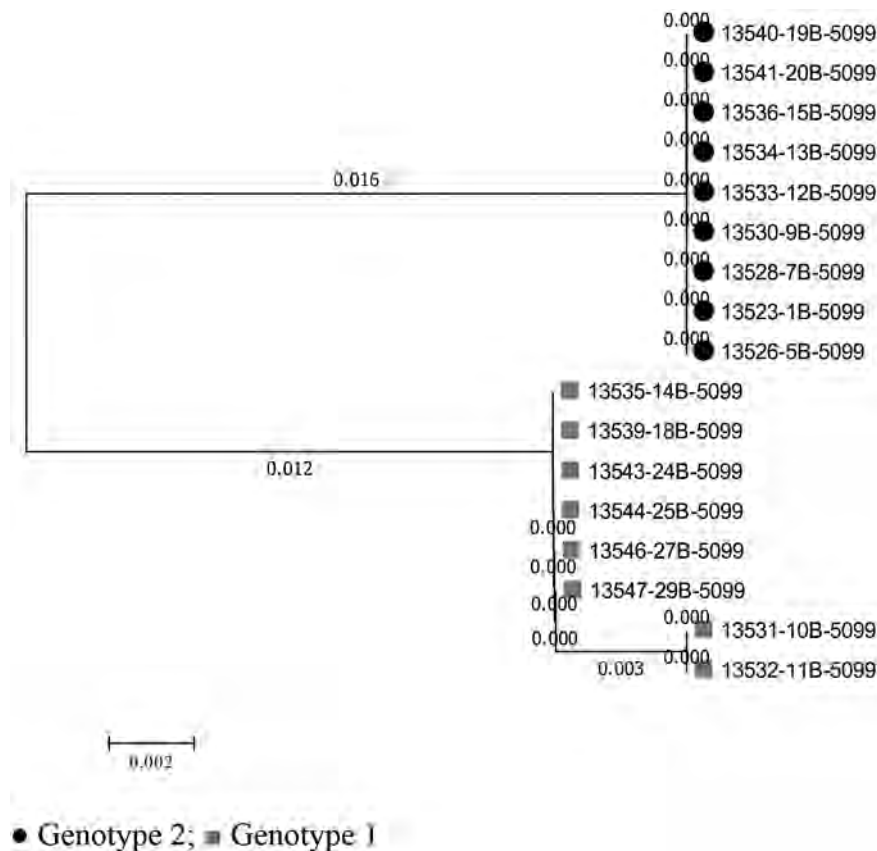


Figure 3. Phylogenetic tree based on partial nucleotide sequences of the BLV *env* gene from the different strains isolated for this work, compared to the same region of the other published full-genome sequences



In farm A we identified two positive animals (adult cows) with genotype 1. On the other hand, in farm B we found two dams and two daughters of each genotype (1 and 2). Finally, in farm C we found one dam and one daughter, which carry genotype 1, and two dams and three daughters, which carry genotype 2.

DISCUSSION

In this study, we analyzed the presence and genotypes of bovine leukemia virus throughout dairy farms of Pasto. A nested-PCR technique and direct sequencing of the *env* gene PCR product were developed to detect the presence of BLV. Two genotypes were identified—genotype 1 and genotype 2. We can observe that genotype 1 is widely distributed around the world, but genotype 2 is more common in South American countries like Argentina and Colombia. According to the results obtained in other countries: (a) Iran reports only genotype 1 (13); (b) in 2010, genotype 1 was identified as the most prevalent genotype in Japan (14); (c) in Jordan, genotype 1 and genotype 6 were identified. Matsumara et al. identified two genotypes of BLV in Turkey: genotype 1 and an unassigned genotype (15); (d) in South America, all seven BLV genotypes have been detected: genotype 1 in Uruguay; in Argentina, three different genotypes co-circulate (1,2,4) (9); (e) at least four different genotypes (1, 5, 6 and (f) (16) in Brazil, although genotype 1 was still the most prevalent (15).

The *env* sequences of the BLV provirus from different locations worldwide have been classified previously into two and four genetic groupings. Some of these groups appear to correlate with the geographical origin of the strains (5,13,16,17). Rodríguez et al. believe that spreading of BLV genotypes could be due to the fact that the diversification of the virus has been driven by the historical dispersion of its host, which is associated with human migration patterns (9).

Furthermore, the occurrence of long-distance dispersal achieved by a small fraction of the virus population also supports the concept of viral transmission via close con-

tact among individuals (9). The presence of more than one single genotype of BLV in different geographic areas may be explained by modern cattle trading tendencies (5,7). In the area of study, we can associate the presence of two genotypes with reproductive management practices because, traditionally, improvement genetic programs use imported semen from the United States, Europe and Canada.

Only one genotype was detected in Farm A and two genotypes were found in two other farms (farms B and C). Farm A is a closed herd (it produces own replacements) and biosafety management is very carefully followed in veterinary practices. Therefore, the origin of BLV infection was one infected cow and the BLV genome of the gp51 region was rather stable and has been maintained among the cattle population of the farm.

Moreover, one cow died in farm A, and the necropsy showed multiple lesions like neoplasia in several visceral organs. In this farm, we only found genotype 1, previously associated with tumor samples in Japan (14). However, when seven genotypes were described, they deduced there was no apparent relation between the genotype of the infecting viral strains and the clinical manifestations (9).

Farms B and C acquire animals from others dairy farms. Thus, the BLV infection in these farms most probably originated from several infected cows and could not be assigned mutations of BLV. The survey by Licursi et al. showed that no plural genotype was detected in individual animals when there was more than one genotype in the same farm (7).

On the other hand, some BLV variants are associated with the failure of antibody detection by standard serological methods and it has been proposed that sequence variability of BLV strains may result in antigenic differences that could affect viral serological identification in infected cattle populations from different geographic areas (11). In fact, it has been shown that the sensitivity and specificity of different serological testing methods already show a significant variation (18). However, other

studies reported that there is no correlation between the BLV genotype and the serological status of infected animals and propose that the difference in the antiviral immune response may be related to the infection stage and other host factors (7).

We used Indirect ELISA to identify positive animals if the BLV variability affects the ability to identify viruses in all infected populations; the drawback of ELISA test is giving false negative results, mainly because of the weak humoral immune response sometimes mounted to the infection, but also because of a lack of sensitivity of this technique. As described in the literature, it is possible that the ELISA gives false positives, where n-PCR determination is highly specific and produce different results when compared with molecular methods (19). On the other hand, it was reported that there is a genetic variant of BLV and infected cattle remained seronegative by AGID and ELISA in all the cases (11). In addition, BLV-infected cattle are sometimes transiently seronegative under certain circumstances, such as early infections, per parturient state and co-infection with other viruses (20).

Finally, we conclude that distinct BLV provirus genotypes are found in different geographical areas and epidemiological analysis based on the variations of the gp51 region (21). The combination of sequencing and phylogenetic tree analysis was useful for characterization of BLV, because serologic diversity among BLV has not been identified (22).

Our results demonstrated that two BLV provirus genotypes (1 and 2) are present in the cattle of Pasto herds, and they show that different BLV provirus genotypes can be found in different geographical areas. This is one of the first attempts to assess the epidemiological situation of BLV in Colombia, using a molecular approach. We can suggest that this situation could be the result of independent introduction events that occurred from imported cattle from the USA and Europe many years ago. Knowledge of BLV genotypes circulating in Southern Colombia will be important for implementing appropriate cattle management policies and for developing appropriate anti-viral strategies and vaccines suitable for the region.

ACKNOWLEDGEMENTS

This work was supported by Vicerrectoría de Investigaciones y Relaciones Internacionales (VIPRI), Universidad de Nariño.

REFERENCES

1. De Giuseppe A, Feliziani F, Rutili D, De Mia GM. Expression of the bovine leukemia virus envelope glycoprotein (gp51) by recombinant baculovirus and its use in an enzyme-linked Immunosorbent assay. *Clin Diagn Lab Immunol.* 2004;11(1):147-51. <http://dx.doi.org/10.1128/cdli.11.1.147-151.2004>
2. Mirsky ML, Olmstead CA, Da Y, Lewin HA. The prevalence of proviral bovine leukemia virus in peripheral blood mononuclear cells at two subclinical stages of infection. *J Virol.* 1996;70(4):2178-83
3. Florins A, Gillet N, Asquith B, Boxus M, Burteau C, Twizere JC, et al. Cell dynamics and immune response to BLV infection: a unifying model. *Front Biosci.* 2007;1(12):1520-31. <http://dx.doi.org/10.2741/2165>
4. Willems L, Kerkhofs P, Burny A, Mammerickx M, Kettmann R. Lack of LTR and ENV genetic variation during bovine leukemia virus-induced leukemogenesis. *Virology.* 1995;206(1):769-72. [http://dx.doi.org/10.1016/S0042-6822\(95\)80007-7](http://dx.doi.org/10.1016/S0042-6822(95)80007-7)
5. Zaho X, Buehring G. Natural genetic variations in bovine leukemia virus envelope gene: possible effects of selection and escape. *Virology.* 2007;360(1):150-65. <http://dx.doi.org/10.1016/j.virol.2007.03.058>
6. Alkan F, Oğuzoğlu TC, Timurkan MO, Karapmar Z. Characterization of env and gag gene fragments of bovine leukemia viruses (BLVs) from cattle in Turkey. *Arch Virol.* 2011;156(10):1891-6. <http://dx.doi.org/10.1007/s00705-011-1060-6>
7. Licursi M, Inoshima Y, Wu D, Yokoyama T, González ET, Sentsui H. Genetic heterogeneity among bovine leukemia virus genotypes and its relation to humoral responses in hosts. *Virus Res.* 2002;86(1-2):101-10. [http://dx.doi.org/10.1016/S0168-1702\(02\)00059-X](http://dx.doi.org/10.1016/S0168-1702(02)00059-X)
8. Juliarena MA, Lendez PA, Gutierrez SE, Forletti A, Rensetti DE, Ceriani MC. Partial molecular character-

- ization of different proviral strains of bovine leukemia virus. *Arch Virol.* 2013;158(1):63-70. <http://dx.doi.org/10.1007/s00705-012-1459-8>
9. Rodriguez SM, Golemba MD, Campos RH, Trono K, Jones LR. Bovine leukemia virus can be classified into seven genotypes: evidence for the existence of two novel clades. *J Gen Virol.* 2009;90(11):2788-97. <http://dx.doi.org/10.1099/vir.0.011791-0>
 10. Moratorio G, Obal G, Dubra A, Correa A, Bianchi S, Buschiazza A, et al. Phylogenetic analysis of bovine leukemia viruses isolated in South America reveals diversification in seven distinct genotypes. *Arch Virol.* 2010;155(4):481-9. <http://dx.doi.org/10.1007/s00705-010-0606-3>
 11. Fechner H, Blankenstein P, Looman AC, Elwert J, Geue L, Albrecht C, Ebner D. Provirus variants of the bovine leukemia virus and their relation to the serological status of naturally infected cattle. *Virology.* 1997;237(2):261-9. <http://dx.doi.org/10.1006/viro.1997.8784>
 12. Sagata N, Yasunaga T, Tsuzuku-Kawamura J, Ohishi K, Ogawa Y, Ikawa Y. Complete nucleotide sequence of the genome of bovine leukemia virus: Its evolutionary relationship to other retroviruses. *Proc Natl Acad Sci USA.* 1985;82(3):677-81. <http://dx.doi.org/10.1073/pnas.82.3.677>
 13. Hemmatzadeh F. Sequencing and phylogenetic analysis of gp51 gene of bovine leukaemia virus in Iranian isolates. *Vet Res Commun.* 2007;31(6):783-9. <http://dx.doi.org/10.1007/s11259-007-0012-9>
 14. Matsumura K, Inoue E, Osawa Y, Okazaki K. Molecular epidemiology of bovine leukemia virus associated with enzootic bovine leukosis in Japan. *Virus Res.* 2011;155(1):343-8. <http://dx.doi.org/10.1016/j.virusres.2010.11.005>
 15. Ababneh MM, Al-Rukibat RK, Hananeh WM, Nasar AT, Al-Zghoul MB. Detection and molecular characterization of bovine leukemia viruses from Jordan. *Arch Virol.* 2012;157(12):2343-8. <http://dx.doi.org/10.1007/s00705-012-1447-z>
 16. Camargos MF, Pereda A, Stancek D, Rocha MA, Reis JK, Greiser-Wilke I, Leite RC. Molecular characterization of the *env* gene from Brazilian field isolates of bovine leukaemia virus. *Virus Genes.* 2007;34(3):343-50. <http://dx.doi.org/10.1007/s11262-006-0011-x>
 17. Felmer R, Muñoz G, Zuñiga J, Recabal M. Molecular analysis of a 444 bp fragment of the bovine leukaemia virus gp 51 *env* gene reveals a high frequency of non-silent point mutations and suggests the presence of two subgroups of BLV in Chile. *Vet Microbiol.* 2005;108(1-2):39-47. <http://dx.doi.org/10.1016/j.vetmic.2005.04.005>
 18. Trono KG, Perez-Filgueira DM, Duffy S, Borca MV, Carrillo C. Seroprevalence of bovine leukemia virus in dairy cattle in Argentina: comparison of sensitivity and specificity of different detection methods. *Vet Microbiol.* 2001;83(3):235-48. [http://dx.doi.org/10.1016/S0378-1135\(01\)00420-5](http://dx.doi.org/10.1016/S0378-1135(01)00420-5)
 19. Monti G, Frankena K, Engel B, Buist W, Tarabla H, M. de Jong MC. Evaluation of a new antibody-based enzyme-linked immunosorbent assay for the detection of bovine leukemia virus infection in dairy cattle. *J Vet Diagn Invest.* 2005;17(5):451-7. <http://dx.doi.org/10.1177/104063870501700507>
 20. Roberts DH, Lucas MH, Wibberly G, Westcott D. Response of cattle persistently infected with bovine virus diarrhoea virus to bovine leukosis virus. *Vet Rec.* 1988;122:293-6. <http://dx.doi.org/10.1136/vr.122.13.293>
 21. Tallet B, Astier-Gin T, Moynet D, Londos-Gagliardi D, Guillemain B. Sequence variations in the amino- and carboxy-terminal parts of the surface envelope glycoprotein of HTLV type 1 induce specific neutralizing antibodies. *AIDS Res Hum Retroviruses.* 2001;17(4):337-48. <http://dx.doi.org/10.1089/08892220150503708>
 22. Licursi M, Inoshima Y, Wu D, Yokoyama T, González ET, Sentsui H. Provirus variants of bovine leukemia virus in naturally infected cattle from Argentina and Japan. *Vet Microbiol.* 2003;96(1):17-23. [http://dx.doi.org/10.1016/S0378-1135\(03\)00202-5](http://dx.doi.org/10.1016/S0378-1135(03)00202-5)