

Manuscript Number:

Title: THE PALEOGENE SOUTH AMERICAN NATIVE UNGULATES AND THE DEMISE OF THE SOUTH AMERICA-ANTARCTICA LAND CONNECTION (FINAL GONDWANA BREAKUP)

Article Type: The Scotia Arc

Corresponding Author: Dr. Marcelo Alfredo Reguero, Ph.D.

Corresponding Author's Institution: Museo de La Plata

First Author: Marcelo Alfredo Reguero, Ph.D.

Order of Authors: Marcelo Alfredo Reguero, Ph.D.; Javier N Gelfo, Ph.D.; Guillermo M López, Ph.D.; Mariano Bond, Ph.D.; Alejandra Abello, Ph.D.; Sergio A Marensi, Ph.D.

Abstract: The biogeographic hypothesis more accepted today is that Antarctica (West Antarctica) and southern South America (Magellan region, Patagonia) were connected by a long and narrow causeway (Weddellian Isthmus) between the Antarctic Peninsula and South America since the Late Cretaceous (Campanian) until the early Paleogene allowing terrestrial vertebrates to colonize new frontiers using this land bridge. Stratigraphically calibrated phylogenies including large, terrestrial native ungulates *Litopterna* and *Astrapotheria* taxa reveal long ghost lineages that extended into the late Paleocene and provide evidence for the minimum times at which these "native ungulates" were present both on Antarctica and South America. Based on these results we estimate that the Weddellian Isthmus was functional as a land bridge until the late Paleocene. Our data places the disconnection between Antarctica and South America in the late Paleocene, indicating that the terrestrial faunistic isolation (Simpson's "splendid isolation") in South America begun at the end of the late Paleocene (~56-57 m.y.). This faunistic isolation is documented to have occurred at least 25 Ma before the existence of deep-water circulation conditions in the Drake Passage (~30 Ma m.y.) based on the onset of seafloor spreading in the West Scotia Sea region. We hypothesize that in the early stages of extension (late Paleocene, ~55 m.y.) a wide and relatively shallow epicontinental sea developed between the Antarctic Peninsula and South America drowning the Weddellian Isthmus and preventing the faunal interchange for obligate cursorial terrestrial forms.



UNIVERSIDAD NACIONAL DE LA PLATA
Facultad de Ciencias Naturales y Museo
División Paleontología de Vertebrados
Paseo del Bosque s/n – B1900FWA La Plata - Argentina

Prof. Sierd Cloeting
Editor *Special Issue of Global and Planetary Change*

Dear Prof. Sierd Cloeting,

We are now sending the manuscript: *The Paleogene South American Native Ungulates and the demise of the South America-Antarctica land connection (final Gondwana breakup)*. The authors are Marcelo A. Reguero, Javier N. Gelfo, Guillermo M. López, Mariano Bond, Alejandra Abello, Sergio A. Marensi and Sergio N. Santillana, who are aware with the submission. The final objective of this manuscript intend to be a contribution to the *Special Issue of Global and Planetary Change* ('Scotia Arc') and it has got 23 pages of text, one table, two appendices and nine figures. This paper has been never sent to other journal.

Thank for your kind consideration.

Best regards,

Dr. Marcelo A. Reguero
División Paleontología de Vertebrados
Museo de La Plata
Paseo del Bosque s/n
B1900FWA La Plata, Argentina
TE: 54-221-425-7744
FAX: 54-221-425-7527

Highlights

- The history of dispersal and evolution of the Antarctic Paleogene land mammal faunas in the James Ross Basin, Antarctic Peninsula is closely related to the existence of a land bridge (Weddellian Isthmus) between West Antarctica (Antarctic Peninsula) and South America.
- Stratigraphically calibrated phylogenies including large, terrestrial, cursorial “native ungulates” Litopterna and Astrapotheria taxa reveal long ghost lineages that extended into the Late Paleocene providing evidence for the minimum times at which these ungulates were present both on Antarctica and South America.
- The faunistic isolation between West Antarctica and South America is documented to have occurred at least 25 m.y. before the existence of deep-water circulation conditions in the Drake Passage (~30 m.y.) based on the onset of seafloor spreading in the West Scotia Sea region.

THE PALEOGENE SOUTH AMERICAN NATIVE UNGULATES AND THE DEMISE OF THE SOUTH AMERICA-ANTARCTICA LAND CONNECTION (FINAL GONDWANA BREAKUP)

Marcelo A. Reguero^{a,b,e,*}, Javier N. Gelfo^{b,e}, Guillermo M. López^b, Mariano Bond^{b,e}, Alejandra Abello^{c,e}, Sergio A. Marensi^{d,e}, and Sergio N. Santillana^a

^a Instituto Antártico Argentino, Balcarce 290, C1064AAF Buenos Aires, Argentina. mreguero@dna.gov.ar; ssantillana@dna.gov.ar

^b División Paleontología de Vertebrados, Museo de La Plata, Paseo del Bosque s/n B1900FWA, La Plata, Argentina. jgelfo@fcnym.unlp.edu.ar; glopez@fcnym.unlp.edu.ar, constantino1453@yahoo.com.ar

^c LASBE, Museo de La Plata, Paseo del Bosque s/n B1900FWA, La Plata, Argentina. mabello@fcnym.unlp.edu.ar

^d IGEBA Instituto de Geociencias Básicas, Aplicadas y Ambientales de Buenos Aires, Ciudad Universitaria, Pabellón II, Núñez, CABA, Argentina.

^e CONICET.

Corresponding autor:

División Paleontología de Vertebrados
Museo de La Plata
Paseo del Bosque s/n, B1900FWA, La Plata, Argentina
TE: 54 221 425 7744 int. 129*36
regui@fcnym.unlp.edu.ar

Abstract

The biogeographic hypothesis more accepted today is that Antarctica (West Antarctica) and southern South America (Magellan region, Patagonia) were connected by a long and narrow causeway (Weddellian Isthmus) between the Antarctic Peninsula and South America since the Late Cretaceous (Campanian) until the early Paleogene allowing terrestrial vertebrates to colonize new frontiers using this land bridge. Stratigraphically calibrated phylogenies including large, terrestrial native ungulates Litopterna and Astrapotheria taxa reveal long ghost lineages that extended into the late Paleocene and provide evidence for the minimum times at which these “native ungulates” were present both on Antarctica and South America. Based on these results we estimate that the Weddellian Isthmus was functional as a land bridge until the late Paleocene. Our data places the disconnection between Antarctica and South America in the late Paleocene, indicating that the terrestrial faunistic isolation (Simpson’s “splendid isolation”) in South America begun at the end of the late Paleocene (~56-57 m.y.). This faunistic isolation is documented to have occurred at least 25 Ma before the existence of deep-water circulation conditions in the Drake Passage (~30 Ma m.y.) based on the onset of seafloor spreading in the West Scotia Sea region. We hypothesize that in the early stages of extension (late Paleocene, ~55 m.y.) a wide and relatively shallow epicontinental sea developed between the Antarctic Peninsula and South America drowning the Weddellian Isthmus and preventing the faunal interchange for obligate cursorial terrestrial forms.

Keywords: West Antarctica, South America, land connection, Early Paleogene, South American and Antarctic native ungulate¹

Abbreviations: ACC, Antarctic Circumpolar Current; Ma, megannum in the isotopic time scale ; m.y., an abstract consideration of elapsed time not directly tied to the isotopic scales; SAANU, South American and Antarctic native ungulate; SALMA, South American Land Mammal Age.

1. Introduction

The Southern Hemisphere today has a fauna and flora distinct from those of the Northern Hemisphere. This unique biota is, in part, the result of the geographic isolation of South America, Antarctica, and Australia from other world continents since the Late Cretaceous and, for South America, ending only in the Neogene (Pliocene or earlier) with the permanent establishment of the Panamanian Isthmus reconnecting the American continents (Iturralde-Vinent, 2006; Lawver *et al.*, 2011; Montes *et al.*, 2012) and initiating the Great American Biotic Interchange (Burnham and Graham, 1999; Webb, 2006; Woodburne, 2010).

By the beginning of the Late Cretaceous (~99.6 Ma), South America, Australia, and Antarctica conformed a very large-scale Noah's Arks (McKenna, 1973) as segments of continental crust with their biota rifted and moved away from its continent of origin (Gondwana). The drifting of these arks throughout latitudinal climate zones was the first-order cause for environmental changes to which the biota, living on the drifting Gondwana fragments, was subjected, and then geographically isolated from one another showing increasing degrees of endemism over time.

Continental dispersal of terrestrial mammals during the final breakup of the Gondwana seems to have been strongly controlled by the presence or absence of seas, their distribution, extent and depth. In particular, the biogeographic relationships of the terrestrial fauna of West Antarctica (Antarctic Peninsula, James Ross Basin) with South America seem to be the result of the combined effects of changing paleogeography and organismal evolution. Continental breakup and assembly, eustatic sea-level changes, tectonic cycles, and climate shifts all influence the geographic context within which the development of a particular palaeobiotic unit took place.

Evidences of Paleogene Antarctic terrestrial faunas come almost exclusively from the James Ross Basin, Antarctic Peninsula (*e.g.*, Woodburne and Zinsmeister, 1982; Marenssi *et al.*, 1994; Reguero *et al.*, 1998, 2002, 2013), and the knowledge of the Paleogene terrestrial mammals in Antarctica is almost exclusively based on fossils from several horizons representing sedimentation in coastal and shallow-marine environments of the Eocene La Meseta Formation (Marenssi *et al.*, 1998) in Seymour (= Marambio) Island, northeast of the Antarctic Peninsula (Fig. 1), and secondly from the Eocene of the Fildes Peninsula, 25 de Mayo (King George) Island (Covacevich and Rich, 1982; Jianjun and Shuonan, 1994).

The history of dispersal and evolution of the Antarctic Eocene land mammal faunas in the James Ross Basin, Antarctic Peninsula is closely related to the existence of land bridges between West Antarctica (Antarctic Peninsula) and South America, and East Antarctica and Australia (Tasman Gateway) (Fig. 2). Based on the composition of the paleofloras of the western part of the Antarctic Peninsula Leppe *et al.* (2012) suggested that the entity of a hypothetical isthmus between Antarctic Peninsula and the Magellan region and Patagonia started in the Maastrichtian (Late Cretaceous).

Estimations of the time of separation of Australia and Antarctica (*e.g.*, Lawver and Gahagan, 2003; Exon *et al.*, 2004) suggest that an important increase in seafloor spreading occurred ~43–49 m.y. with final separation of the two land masses not occurring until the onset of the deeper marine conditions in the Tasman Gateway in the latest Eocene, ~ 35 m.y.

Terrestrial mammals with South American affinities (including marsupials, xenarthrans and native ungulates, Reguero and Gasparini, 2007; Reguero *et al.*, 2013, Table 1) have been exhumed from the shallow marine La Meseta Formation, Seymour Island, Antarctic Peninsula. This fauna exhibits high levels of species endemism for marsupials and two groups of South American native ungulates (Fig. 3), and is also taxonomically imbalanced in that it is not typically an Eocene South American fauna (Reguero *et al.*, 2002), as might be expected if most of its ancestors dispersed over a “land bridge” between these two continents or eventually used several intervening islands in a stepping-stone chain facilitated by past lower sea levels. So, early Paleogene terrestrial mammal localities from West Antarctica (Antarctic Peninsula) and Patagonia (South America) reflect the final breakup of Gondwana into its present-day components and their dispersal to their present positions on the globe. The final breakup of Gondwana brought about first-order biogeographic changes for all its component terrestrial biota (Reguero and Marenssi, 2010; Gelfo *et al.*, 2013, Abello *et al.*, 2013).

Since the early Paleogene and for most of the Cenozoic, South America lacked connections with other major landmasses and was an island continent, leading George Gaylord Simpson (1980) to recognize the evolution and diversity of their mammals as the product of a “splendid isolation”. The evolution of South American Cenozoic terrestrial mammals was conceived, during several decades, as episodic and described as a succession of three “faunal strata” (Simpson, 1980). The oldest of them – Stratum 1 (Fig. 4), spanning roughly the Paleocene-Eocene –, consists of communities dominated by the continent’s “original inhabitants” (*e.g.*, “South American native ungulates”, marsupials, xenarthrans).

McKenna (1975) suggested the common origin of South American native ungulates, and grouped Litopterna, Astrapotheria, Notoungulata, Pyrotheria and Xenungulata, in the Meridiungulata. This division of the Grandorder Ungulata separated South American forms of other extant and extinct ungulates (McKenna and Bell, 1997).

These orders are examples of ungulate mammals that arose independently in “splendid isolation” on the island continent of South America. Like Australia, South America was isolated completely from all other continents following the breakup of Gondwana. Litopterna and Astrapotheria are native ungulates that were part of the “Stratum 1” of Simpson (1980) with Paleogene records in South America and Antarctica continents. These observations suggest that these clades possessed more cosmopolitan and Gondwanan distributions than previously assumed, and that caution is necessary when attempting to establish palaeobiogeographic patterns on the basis of a patchily distributed fossil record.

Litopterna and Astrapotheria were extinct groups of Cenozoic South American and Antarctic native ungulates (SAANU) which convergently resembles other Holarctic hoofed mammals in several characters. Some litopterns are convergent with "archaic ungulates" (Protolipternidae), equids (Proterotheriidae) and camelids (Macraucheniiidae). Astrapotheres resembles in some cases rhinoceros with their lophodont molars and tusk-like canines. Sparnotheriodontidae litopterns were medium- to large-sized ungulates with bunolophodont dentition. The family is known in the late Paleocene/early Eocene Itaboraian South American Land Mammal Age (SALMA) of Brazil, the early Eocene Riochican and Casamayoran SALMAs of Patagonia, and the ?middle Eocene of Mendoza, Argentina. The other taxon belongs to an astrapotheriid, forms with a known biochron in South America that range to the late Paleocene late - early Eocene (Itaboraian SALMA) until the middle Miocene (Laventan SALMA).

Deep-water conditions did not develop in the Drake Passage until about 30 m.y. ago; the youngest estimates for deep-water circulation via the Drake Passage are based on the ca. 28 m.y. onset of seafloor spreading in the West Scotia Sea region (Barker, 2001; Eagles *et al.*, 2005; Lodolo *et al.*, 2006). Prior to the opening of the Drake Passage and the establishment of the Antarctic Circumpolar Current, a land connection between South America and the Antarctic Peninsula is thought to have lasted until approximately 41 m.y. (Scher and Martin, 2006), although continental lithospheric stretching preceding the final breakup may have begun ca. 50 Ma (Livermore *et al.*, 2005; Ghiglione *et al.*, 2008).

This article analyzes phylogenetic and biogeographic patterns for two Paleogene SAANU, Astrapotheria and Litopterna, that inhabited both Antarctica and South America before the final breakup of these continents, within the context of major prevailing geologic and oceanographic conditions throughout the early Paleogene to provide insights into the mechanisms that resulted in their existence on the Antarctic continent at that time.

2. MATERIALS AND METHODS

The cladograms of Astrapotheria and Notoungulata were taken from Bond *et al.* (2011) and Reguero and Prevosti (2010) respectively. Until now, no published cladistic analysis has focused on a detailed phylogeny of the Sparnotheriodontidae (Litopterna). We built a data matrix with 34 dental characters and 7 taxa (Appendix 1 and Appendix 2). All the characters were considered as unordered and equally weighted. The tree was rooted with: *Tiuclaenus minutus* (Kollpaniinae) because is part of the oldest "archaic ungulates" that appear in South American fossil record and with close affinities with North American taxa (Muizon and Cifelli, 2000), and *Didolodus multicuspis* which is thought to be close to the ancestry of sparnotheriodontid litoptern (Gelfo, 2006). The analysis was performed using TNT software (Goloboff *et al.*, 2003) under the implicit enumeration option,

The incompleteness of the fossil record means that minimum divergence times must be established through the calculation of 'ghost lineages' (Norell, 1996), which extend the temporal

range of a lineage prior to its appearance in the fossil record based on information from its sister lineage. We identify ‘ghost lineages’ following the methodology proposed by previous authors, considering the age of first appearance of each terminal taxon in the fossil record as the only relevant temporal information (Pol *et al.*, 2004).

The sequence of South American Land Mammal “Ages” (SALMAs) referred to in the present study essentially follows Gelfo *et al.* (2009a).

Geologic time units follow current standards (Gradstein *et al.*, 2012).

3. DISCUSSION

3.1. Weddellian Isthmus: Danian paleogeographic reconstruction (Fig. 5.)

Recent reconstruction of the early Paleogene paleogeography of the Antarctic Peninsula and South America show a continuous land extending from South America to Antarctica (Lawver *et al.*, 2011). No major marine barriers were present between South America and Antarctica at this time. Here we propose to name “Weddellian Isthmus” this continuous, although probably narrow land-mass, extending from South America to the Antarctic Peninsula after the original name erected by Zinsmeister (1979, 1982) for his high latitude Weddellian Biogeographic Province. This province was defined on the basis of marine molluscan, echinoderm and arthropod faunas as a cool temperate, shallow water region which extended from southern South America (Magellan Region in Chile, and Patagonia in Argentina), along the Antarctic Peninsula and West Antarctica, to New Zealand, Tasmania and southeastern Australia. Later, Case (1988) expanded this concept with the inclusion of terrestrial plants and mammals. This province existed from the Late Cretaceous through the Eocene when Australia, Antarctica, and southernmost South America were in proximity (Zinsmeister, 1979, 1982; Woodburne and Zinsmeister, 1984) although not necessarily connected by land.

Among the tectonic events having an impact on ocean circulation, the opening of the Drake Passage is thought to have contributed to the world-wide climatic cooling at the Eocene-Oligocene boundary, and to the posterior thermal isolation of Antarctica. Today, the Drake Passage is the narrowest part of a circum-Antarctic seaway whose presence is necessary for the existence of the Antarctic Circumpolar Current (ACC). The opening of this passage enabled the development of the ACC, which thermally isolated Antarctica through reduced southward heat transport (*e.g.*, Toggweiler and Bjornsson, 2000; Sijp and England, 2004).

3.1.1. Scotia Arc and the Opening of the Drake Passage

Opening of the Drake Passage gateway between the Pacific and Atlantic oceans has been linked in various ways to Cenozoic climate changes. The beginning of the period of extension in the Drake Passage region is estimated to have occurred around 50 Ma through crustal stretching followed by sea-floor spreading at the West Scotia Ridge (Livermore *et al.*, 2005). From the

oceanic floor of Drake Passage, the largest of the remaining uncertainties in understanding this opening is in the timing and process of the opening of the central Scotia Sea.

Geophysical and paleontological data indicate that West Antarctica and southern South America disconnected probably before the end of the early Eocene and, by the mid–late Eocene, were already separated by a several hundred kilometer-wide marine gap. Unfortunately, age estimates for the onset of a seaway through the Drake Passage between Antarctic Peninsula and southern South America range from middle Eocene (Livermore *et al.*, 2005; Scher and Martin, 2006) to Oligocene (Lawver and Gahagan, 2003) or early Miocene (Barker, 2001), complicating interpretations of the relation between ocean circulation and global cooling. Others have recently argued that the marine connection may have started during the opening of small basins in the embryonic West Scotia Sea, during a period of extension preceding sea-floor spreading (Lawver and Gahagan, 1998, 2003; Eagles *et al.*, 2006; Eagles, 2007). Evidence for the middle Eocene (?) opening of two of these small depocenters, the Protector and Dove basins, indicates the possible creation of a seaway in the southern part of the Drake Passage starting after a major increase in the separation rate between South America and Antarctica ca. 50 m.y. (Livermore *et al.*, 2005; Eagles *et al.*, 2006; Fig. 2).

In contrast to interpretations of latest Paleogene or early Neogene development of the ACC, several lines of evidence point towards a peak of plate tectonic activity in the Scotia Arc and Drake Passage preceding the Oi-1 glaciation: (1) water-mass provenance data from the Atlantic sector of the Southern Ocean are consistent with late middle Eocene penetration of Pacific water through Drake Passage (Scher and Martin, 2006); (2) Lagabrielle *et al.* (2009) report a phase of rapid deepening of seaways in that region allowing flows of cold, proto-ACC waters, between 37 and 34 m.y.; (3) micropaleontological analysis of a core from Bruce Bank in the Scotia Sea shows that it was lying between 800 m and 2000 m depth around 45 m.y., and that subsidence was active at that time in this region, confirming the early opening of the Drake Passage at least to depths greater than 800 m (Eagles *et al.*, 2006); (4) the accumulation of lower Eocene strata in southernmost South America has been interpreted as evidence of coeval crustal thinning (Ghiglione *et al.*, 2008); and (5) thermochronometric data from the Fuegian Andes of the northern Scotia Arc suggest rapid tectonic exhumation from 60–30 m.y. (Barbeau *et al.*, 2009); (6) the development of deep marine connection in the proto-Drake Passage region is proposed by Eagles *et al.* (2006) who suggest the onset of seafloor spreading in the Dove Basin during the period 41–34.7 m.y., moving to Protector Basin between 34 m.y. and 30 m.y.. Therefore, the onset of the period of extension in this region is estimated to have occurred around 50 m.y. (early Eocene) through crustal stretching before true seafloor spreading between the tips of South America and Antarctica (Livermore *et al.*, 2005; Eagles *et al.*, 2006; Livermore *et al.*, 2007).

3.1.2. *Early Paleogene terrestrial faunas from Patagonia related with the final breakup of Gondwana*

There are few Paleocene localities in Patagonia with gondwanic terrestrial faunas. Paleocene mammals from Patagonia are represented by a variety of nontherian forms (*i.e.*, no marsupials or placentals) that record a radiation known as the Gondwanan Episode for South America (Pascual, 2006; Pascual and Ortiz-Jaureguizar, 2007). Considering the oldest South American mammalian records and faunas (*i.e.* *Cocatherium*, Tiupampan and Peligran SALMAs, *Carodnia* Zone) the only groups which are also present in the Antarctic continent are gondwanatherian (Goin *et al.*, 2006) and a dryolestoid mammal (unpublished data). Dryolestoid are known from several Cretaceous Laurasic and South American outcrops (Rougier *et al.*, 2011, Fig 5). Gondwanatherians in contrast show a wide Southern Hemisphere distribution during the Late Cretaceous being found in South America (Gurovich, 2005), Madagascar (Krause *et al.*, 1997) and India (Prasad *et al.*, 2007). Considering this previous temporal and geographic distribution, the presence of these lineages in the Eocene of West Antarctica could be interpreted as a relictual ancient distribution (Reguero *et al.*, 2013) and not very informative about the final Gondwana breakup. In contrast, the Eocene Antarctic record of sparnotheriodontids and astrapotheriids, which were not present in the Mesozoic, suggest that they (or their more recent common ancestor) migrate from South America to West Antarctica before the break up of both land masses. This fact highlights the importance of therian mammals in order to make paleobiogeographic inferences.

The marsupial *Cocatherium* is the oldest therian known in the Cenozoic of South America and comes from marine strata of the early Paleocene (Danian) Lefipán Formation, Chubut province, Patagonia (Goin *et al.*, 2006a) (Fig. 6). It is the only terrestrial mammal recovered from this horizon until now.

The oldest Paleogene Patagonian terrestrial fauna come from Punta Peligro, Chubut province (Fig. 6). It was recovered from the Banco Negro Inferior of the Salamanca Formation in the eastern part of the basin, and designated as Peligran SALMA (Bonaparte *et al.*, 1993) which range from about 63.2 - 63.8 Ma (Clyde *et al.*, in press) somewhat younger than the Tiupampan SALMA defined in Bolivia (Gelfo *et al.*, 2009a and literature therein).

This fauna includes Anura, Chelonia and Crocodylia (Bonaparte *et al.*, 1993), as well as a unique assemblage of mammals derived from Gondwanan and Laurasian lineages (Bonaparte *et al.*, 1993; Gelfo *et al.*, 2009a). Only ten mammal taxa are known, and the Gondwanan lineages include the gondwanathere *Sudamerica ameghinoi*; the dryolestoid *Peligrotherium tropicalis*, and *Monotrematum sudamericanum*, a monotreme related to the Australian Ornithorhynchidae taxa (Pascual *et al.*, 1992a,b). The seven therians comprise four marsupials and three placentals.

Punta Peligro marsupials are represented by two Didelphimorphia?, *Derorhynchus* and *Didelphopsis* and two new genera of Polydolopidae and Bonapartheriidae (Bond *et al.*, 1995;

Pascual and Ortiz-Jaureguizar, 2007). Eutherians are represented by the notonychopid *Requisia vidmari*, the oldest known litoptern (Bonaparte and Morales, 1997). Three archaic ungulates, represented by the didolodontid *Escribania chubutensis*, *Escribania talonicuspis* and *Raulvaccia peligrensis*, complete the therian lineages of this fauna.

The ‘*Carodnia* faunal zone’ (Simpson, 1935a) (~57 m.y.) originally defined for Bajo de La Palangana, in the Chubut coast (Fig. 6) is poorly represented and studied, and includes only the Xenungulata *Carodnia feruglioi*. Probably another xenungulate (*i.e.* *Notoetayoa gargantuai*) comes from this biozone (Gelfo *et al.*, 2008). Simpson (1935a) suggests that ‘*Carodnia* zone’ could be approximately equivalent or probably somewhat older than the lower level from Cerro Redondo. No common taxa were found in this last locality, but an undetermined ?borhyaenid, the proterotheriid litoptern *Wainka tshotse* (Bond *et al.*, 1995) and *Amphidolops yapa*, a polydolopid marsupial (see Chornogubsky, 2010). The “Carodnian” fauna is the oldest from Patagonia that was known to Simpson (1935a,b). Vertebrates from these horizons are apparently restricted to the Peñas Coloradas Formation in the San Jorge Basin, but there is no clear evidence that they could represent a new biochronologic unit (Bond *et al.*, 1995, Gelfo *et al.*, 2009a).

Near Laguna del Hunco and the town of Paso del Sapo in the Chubut province, Argentina (Fig. 6) there are local mammalian faunas dated as early-middle Eocene (~49–47 m.y.), filling the temporal gap between the faunas of the Río Chico Group and those of the Sarmiento Formation in Patagonia and providing a record of probable rainforest vertebrates (Gosses, 2006; Tejedor *et al.*, 2009). Paleobotanical and palynological evidence from inferred contemporary localities nearby indicate subtropical environments characterized by warm and probably moderately humid climate (Wilf *et al.*, 2005, 2009).

This fauna (Laguna Fría, Paso del Sapo) shows several affinities with the Antarctic fauna of La Meseta, since they share several lineages at least at family level (*e.g.* Polydolopidae, Derorhynchidae, Sparnotheriodontidae, Gelfo *et al.*, 2009b). Tejedor *et al.* (2009) correlated biochronologically La Meseta terrestrial fauna with the western Patagonia (Paso del Sapo fauna), suggesting a continental extension of the biogeographic Weddellian Province as far north as central western Patagonia.

3.2. Palaeobiogeographic implications of the presence of SAANUs in West Antarctica

3.2.1. Evidence from stratigraphically calibrated phylogenetic analyses of *Litopterna* and *Astrapotheria*

Two biogeographic hypotheses about the presence of SAANUs in the early Eocene of the Antarctic Peninsula can be proposed: 1) as the land connection (Weddellian Isthmus) was maintained between South America and Antarctica until the late Paleocene, it is quite possible that the early Eocene record of SAANUs from Antarctica may possibly represent an early

Paleogene dispersal event; and 2) SAANUs had a pan-Gondwanan distribution prior to the fragmentation of Gondwana landmass.

The calibration of the phylogenetic trees which contain fossil taxa with the chronostratigraphic information (geologic time) provides information about the minimal ages of divergence for each node of the tree.

Phylogenies of Sparnotheriodontidae and Astrapotheria are presented here, evaluating the time of diversification of selected nodes. The incompleteness of the fossil record means that minimum divergence times must be established through the calculation of ‘ghost lineages’ (Norell, 1996), which extend the temporal range of a lineage prior to its appearance in the fossil record based on information from its sister lineage.

The stratigraphic calibration of Litopterna (Sparnotheriodontidae) and Astrapotheria (Astrapotheriidae) phylogenies here presented evidences the minimum age at which their common ancestor were present on both Antarctica and South America continents.

The Antarctic sparnotheriodontid *Notiolofofos* (Bond *et al.*, 2006), previously referred to *Victorlemoinea* (Bond *et al.*, 1990), is endemic from Antarctica, and has close affinities with an undescribed taxon from Patagonia (Goin *et al.*, 2000). The Patagonian *Victorlemoinea labyrinthica* is a species relatively common in the Riochican (early Eocene) and Vacan faunas of Patagonia. The oldest known representative of the Sparnotheriodontidae, *Victorlemoinea prototypica*, is from the late Paleocene/early Eocene Itaboraian fauna from Brazil, whereas the youngest record in Patagonia is *Sparnotheriodon epsilonoides* from the Vacan age (middle Eocene). Another species probably of middle Eocene is *Phoradiadius divoertensis* from Divisadero Largo Formation, in West Argentina, Mendoza. *Notiolofofos* is known from deposits dating to ~54 m.y. (Acantilados Allomember, Mörs *et al.*, 2013), whereas the rest of the La Meseta fauna dates between 49–52 m.y. (Reguero *et al.*, 2013). The body size of the *Notiolofofos* has been estimated in ca. 395–400 kg indicating that it was the largest herbivore living in Antarctica in the early Eocene (Vizcaíno *et al.*, 1998). The stratigraphic calibration of litoptern Sparnotheriodontidae phylogeny here presented (Fig. 7), evidence the late Paleocene as the minimum age at which their common ancestor were present on Antarctica and South America.

Bond *et al.* (2011) phylogenetic analysis of Astrapotheria places the Antarctic *Antarctodon* as the sister taxon of a clade including South American species of Astrapotheriidae: *Albertogaudrya* (Eocene, Patagonia), *Scaglia* (Eocene, Patagonia), *Astraponotus* (late Eocene, Patagonia), *Maddenia* (Oligocene, Patagonia), *Parastrapotherium* (Oligocene to early Miocene, Patagonia), *Astrapotherium* (early to middle Miocene, Patagonia and Chile) and *Granastrapotherium* (middle Miocene, Colombia).

The oldest known records of Astrapotheria come from late Paleocene beds of South America. Several taxa are known from this age: *Trigonostylops wortmani* from Patagonia,

Tetragonostylops apthomasi, from Itaboraí, Brazil, *Eoastrapostylops riolorensis* from the Northwest of Argentina and *Shecenia stirneri* (not included in the analysis of Bond *et al.*, 2011). The relatively limited fossil record of Paleocene age does not reveal by itself the presence of a radiation during this time. However, when the phylogenetic hypotheses obtained in the parsimony analysis are calibrated against the geological age of fossil taxa, a basal astrapother radiation is revealed by the presence of two ghost lineages that must have originated in the late Paleocene (in addition to the two species recorded for this age; Fig. 8). These two ghost lineages extend the minimum age of origin of the lineages leading to *Tetragonostylops apthomasi* and *Antarctodon sobrali*, and the clade formed by advanced astrapotheres (Astrapotheriidae) back to the late Paleocene. All these forms appear later in the fossil record, in early Eocene beds. Therefore, the calibrated phylogenies extend the evolutionary origins of these lineages at least 5 m.y. before their first appearance in the fossil record.

The most unexpected circumstance in the Eocene La Meseta Formation is the apparent lack of notoungulates and other ungulate groups such as archaic ungulates (*e.g.* Kollpaniinae, Didolodontidae) and non-sparnotheriodontid Litopterna. Notoungulata were the most diverse (morphologically as well as taxonomically) and successful of the “South American native ungulate” groups. One of the most important radiations of notoungulates in Patagonia occurred during the late Paleocene-early Eocene (Itaboraian SALMA).

During the Paleocene, there is no evidence of a physical barrier that could prevent dispersal events between Patagonia and Antarctic Peninsula, or a filter in the Weddellian Isthmus that could limit the dispersion of obligate cursorial mammals. This suggests that notoungulates absence in the Antarctic fossil record could be due to their apparently delayed radiation in the southern South America. In the early Paleocene, notoungulates were already present in the lower latitudes of Tiupampa, Bolivia, but not in the higher latitudes of Patagonian (Gelfo *et al.*, 2009a). Their absence from Peligran SALMA records reinforces the idea that their Patagonian radiation occurred after the final breakup of both continents. The stratigraphic calibration of Notoungulata Typotheria phylogeny here presented (Fig. 9), evidence the minimum age at which their common ancestor were present on South America (Sparnotheriodontidae ~57-58 m.y., Astrapotheria ~58-59 m.y.).

4. CONCLUSIONS

Great insights regarding the extent and duration of the land connection between South America and Antarctica can be obtained from the SAANUs that were medium to large-bodied and inferred to have restricted to terrestrial locomotion, that were the most unlikely to have rafted, swum, or flown across expansive marine barriers. The geological/geophysical evidences for the age of demise of the terrestrial connection between Antarctica and South America (Weddellian Isthmus) during the early Paleogene have direct implications for the potential dispersion of terrestrial faunas. The record of early Eocene terrestrial mammal taxa on Antarctica,

i.e., SAANUs and marsupials (Gelfo *et al.*, 2013; Abello *et al.*, 2013) that have sister-taxon relationships to early Eocene of South America have profound implications for the timing and sequence of Gondwanan fragmentation.

Examination of ghost lineages of astrapotheriid astrapotheres and sparnotheriodontid litopterns currently known to occur in Paleogene rocks of South America and Antarctica indicates minimum divergence times for these taxa in the late Paleocene or even much earlier, thus substantially pre-dating their early Eocene occurrences. Indeed, the minimum divergence times established from the current fossil record indicates that the lineages of large, terrestrial vertebrates represented in the early Paleogene of West Antarctica and South America may have evolved in isolation for 5 m.y. A minimum divergence date of the Antarctic and Patagonia litopterns (57-58 m.y.) and astrapotheres (58-59 m.y.) is therefore established as at least middle Paleocene, approximately 5-6 m.y. earlier than their documented occurrences.

One of the most important radiations of notoungulates, the most diverse (morphologically as well as taxonomically) and successful of the SAANU groups, in Patagonia occurred during the early Eocene. As we suppose that no barrier to dispersal existed between Patagonia and the Antarctic Peninsula during the Paleocene, the absence of this group in Antarctica could be explained by suggesting that the early Eocene La Meseta fauna is composed only of those taxa that were present in West Antarctica before the disconnection of the Weddellian Isthmus. The stratigraphic calibration of notoungulate (Typotheria) phylogeny evidence a minimum age (~56 m.y.) at which their common ancestor were present only in South America. Their absence from Antarctic Paleogene and Patagonian Paleocene (Peligran SALMA) records, suggest that their high latitude radiation occurred after the final breakup of both continents (~55-56 m.y.).

We interpret that this faunistic isolation between Antarctica and South America (Patagonia) is documented at least 25 m.y. before the existence of deep-water circulation conditions in the Drake Passage (~30 m.y.) based on the onset of seafloor spreading in the West Scotia Sea region.

The conclusions drawn from the analyses of fossil SAANUs indicate that the overland dispersal route between South America and the West Antarctica through the Antarctic Peninsula closed by late Paleocene times, many million years before the reported existence of sea-floor on the Drake Passage and at least 5 m.y. before the pretended initiation of the extensional regime on that area. Considering that as a whole, the late Paleocene-early Eocene was a period of warm climates and global sea-level low-stands our hypothesis is that at the early stages of extension a wide and relatively shallow epicontinental sea developed between the Antarctic Peninsula and South America drowning the former Weddellian Isthmus and preventing the faunal interchange for the cursorial terrestrial forms.

If this is correct, then an early stage of rifting produced stretching crustal thinning and widespread subsidence during the Paleocene leading to the development of a shallow although

wide epicontinental sea. It was followed by an Eocene drifting stage with development of discrete deep-marine basins along the southern Scotia Sea which eventually led to the opening of the Drake Passage and the initiation of the ACC which in turn caused the thermal isolation of Antarctica.

Developing a more complete fossil record from other intervals and areas (*e.g.*, early Paleogene of Australia) will provide critical information for reconstructing the biogeographical history of the final breakup of Gondwana. In this regard, it is relevant to note that the discovery and/or re-appraisal of terrestrial mammal faunas of Australia have revealed typical Gondwanan elements, including the presence of marsupials (Sigé *et al.*, 2009). Sigé *et al.* (2009) proposed a ~55-m.y. trans-Antarctic dispersal between the fauna of Chulpas, Peru, and Tingamarra fauna, Australia. This establishes the presence of these clades in Australia before the Late Cretaceous, as would be predicted from the above inference that the basal stocks were isolated on Australia in the Late Cretaceous/early Paleogene, prior to separation from West Antarctica.

Acknowledgements

We especially acknowledge the Instituto Antártico Argentino and Fuerza Aérea Argentina, which provided logistical support for our participation in the Antarctic fieldwork. We also have benefited from collaborative effort in the field (prospecting and picking) of Juan José Moly, Thomas Mörs, Carolina Acosta Hospitaleche, Carolina Vieytes, Leonel Acosta, Claudia Tambussi, F. Degrange and José O'Gorman. M.A.R is grateful to L. Lawver and L. Gahan for sharing literature and information. Martina Charnelli drew Figures 2 and 3. Part of this study was funded by Instituto Antártico Argentino (PICTA 2004 and 2008), Agencia Nacional de Promoción Científica y Tecnológica (ANPCYT) PICT 0365 and PICTO 0093, Universidad Nacional de La Plata (UNLP) 11-N677, and Consejo Nacional de Investigaciones Científicas y Técnicas (CONICET).

References

- Abello, M.A., Chornogubsky, L., Reguero, M.A., 2013. Biogeografía histórica de los Polydolopidae (Mammalia; Marsupialia) y el desmembramiento final de Gondwana. *VIII Congreso Latinoamericano de Paleontología y del XIII Congreso Mexicano de Paleontología*, September, 23-27, 2013, Guanajato, Mexico.
- Barbeau, Jr., D.L., Olivero, E.B., Swanson-Hysell, N.L., Zahid, K.M., Murray, K.E., Gehrels, G.E., 2009. Detrital-zircon geochronology of the eastern Magallanes foreland basin: Implications for Eocene kinematics of the northern Scotia Arc and Drake Passage. *Earth and Planetary Science Letters* 284, 489–503.
- Barker, P.F., 2001. Scotia Sea regional tectonic evolution: implication for mantle flow and palaeocirculation. *Earth-Sci.Rev.* 55, 1–39.
- Bonaparte, J.F., Van Valen, L.M., Kramarz, A., 1993. La fauna local de Punta Peligro, Paleoceno inferior, de la provincia del Chubut, Patagonia, Argentina. *Evol. Monogr.* 14, 1–61.
- Bonaparte, J.F., Morales, J., 1997. Un primitivo Notonychopidae (Litopterna) del Paleoceno inferior de Punta Peligro, Chubut, Argentina. *Estud. Geol.* 53, 263–274.
- Bond, M., Carlini, A.A., Goin, F.J., Legarreta, L., Ortiz Jaureguizar, E., Pascual, R., Uliana, M.A., 1995. Episodes in South American land mammal evolution and sedimentation: testing their apparent concurrence in a Paleocene succession from central Patagonia. *Actas VI Congreso de Paleontología y Bioestratigrafía* 2, 47-58.
- Bond, M., Pascual, R., Reguero, M.A., Santillana, S.N., Marensi, S.A., 1990. Los primeros ungulados extinguidos sudamericanos de la Antártida. *Ameghiniana*, 16, 240.
- Bond, M., Reguero, M.A., Vizcaíno, S.F., Marensi, S.A., 2006. A new “South American ungulate” (Mammalia: Litopterna) from the Eocene of the Antarctic Peninsula. In: Francis, J.E., Pirrie, D., Crame, J.A. (Eds.), *Cretaceous –Tertiary High Latitude Palaeoenvironments, James Ross Basin, Antarctica*. Geological Society, London, Special Publications 258, pp. 163-176.
- Bond, M., Kramarz, A., Macphee, R., Reguero, M., 2011. A new astrapothere (Mammalia, Meridiungulata) from La Meseta Formation, Seymour (Marambio) Island, and a reassessment of previous records of Antarctic astrapotheres. *American Museum Novitates* 3718, 1-16.
- Borsuk-Bialynicka, M., 1988. New remains of Archaeoceti from Paleogene of Antarctica. *Pol. Polar Res.* 9, 437–445.
- Buono, M.R., Fernández, M.S., Tambussi, C., Mörs, T., Reguero, M.A., 2011. Un arqueoceto (Cetacea: Archaeoceti) del Eoceno temprano tardío de la Isla Marambio (Formación La

- Meseta), Antártida. *IV Congreso Latinoamericano de Paleontología de Vertebrados*, 21 al 24 de Septiembre de 2011, San Juan, Argentina.
- Burnham, R.J., Graham, A., 1999. The history of Neotropical vegetation: new developments and status. *Ann.Mo. Bot. Garden* 86(2), 546–589.
- Carlini, A.A., Pascual, R., Reguero, M.A., Scillato Yané, G.J., Tonni, E.P., Vizcaíno, S.F., 1990. The first Paleogene land placental mammal from Antarctica: its paleoclimatic and paleobiogeographical bearings. *IV International Congress of Systematic and Evolutionary Biology*, Abstracts, 325. Maryland.
- Case, J.A., 1988. Paleogene floras from Seymour Island, Antarctic Peninsula. In: Feldmann, R.M., Woodburne, M.O. (Eds.), *Geology and Paleontology of Seymour Island, Antarctic Peninsula*, vol. 169. Memoir of the Geological Society of America, Boulder, pp. 523–530.
- Chornogubsky, L., 2010. Sistemática de la familia Polydolopidae (Mammalia, Marsupialia, Polydolopimorphia) de América del Sur y la Antártida. Ph.D. Thesis, *Facultad de Ciencias Exactas y Naturales de la Universidad Buenos Aires*, pp. 352.
- Chornogubsky, L., Goin, F.J., Reguero, M.A., 2009. A reassessment of Antarctic polydolopid marsupials (Middle Eocene, La Meseta Formation). *Antarctic Science* 21, 285–297.
- Clyde, W.C., Wilf, P., Iglesias, A., Slingerland, R.L., Barnum, T., Bijl, P.K., Bralower, T.J., Brinkhuis, H., Comer, E.E., Huber, B.T., Ibañez-Mejía, M., Jicha, B.R., Krause, J.M., Schueth, J.D., Singer, B.S., Raigemborn, M.S., Schmitz, M.D., Sluijs, A., Zamaloa, M. del C., in press. New age constraints for the Salamanca Formation and lower Río Chico Group in the western San Jorge Basin, Patagonia, Argentina: Implications for K/Pg extinction recovery and land mammal age correlations. *Geological Society of America Bulletin*.
- Covacevich, V., Rich, P.V., 1982. New birds ichnites from Fildes Peninsula, King George Island, West Antarctica. In: Craddock, C. (Ed.), *Antarctic Geoscience*, pp.245-254, University of Wisconsin Press. Madison.
- Eagles, G., 2007. New angles on South Atlantic opening, *Geophys. J. Int.* 168, 353–361, doi:10.1111/j.1365-246X.2006.03206.x.
- Eagles, G., Livermore, R.A., Fairhead, J.D., Morris, P., 2005. Tectonic evolution of the west Scotia Sea. *J. Geophys. Res.* 11, B02401. doi:10.1029/2004JB003154.
- Eagles, G., Livermore, R., Morris, P., 2006. Small basins in the Scotia Sea: the Eocene Drake Passage gateway. *Earth and Planetary Science Letters* 242, 343–353.
- Exon, N.F., Kennett, J.P., Malone, M.J., et al., 2004. *Proc. ODP*, Init. Repts. 189 [Online]. Available from World Wide Web: http://www.odp.tamu.edu/publications/189_IR/189ir.htm.

- Gelfo, J.N., 2006. Los Didolodontidae (Mammalia, Ungulatomorpha) del Terciario sudamericano. Sistemática, Origen y evolución. Ph.D. Thesis, Facultad de Ciencias Naturales y Museo. Universidad Nacional de La Plata, La Plata, 448 pp.
- Gelfo, J.N., López, G.M., Bond, M., 2008. A new Xenungulata (Mammalia) from the Paleocene of Patagonia, Argentina. *J. Paleontol.* 82(2), 329–35.
- Gelfo, J.N., Goin, F.J., Woodburne, M.O., de Muizon, C., 2009a. Biochronological relationships of the earliest South American Paleogene mammalian faunas. *Palaeontology* 52(1), 251–69.
- Gelfo, J.N., Reguero, M.A., López, G.M., Carlini, A.A., Ciancio, M.R., Chornogubsky, L., Bond, M., Goin, F.J., Tejedor, M.F., 2009b. Eocene mammals and continental strata from Patagonia and Antarctic Peninsula. In: Albright, L.B., III (Ed.), *Papers on Geology, Vertebrate Paleontology, and Biostratigraphy, in Honor of Michael O. Woodburne*. Museum of North Arizona Bulletin 64, Flagstaff, pp. 567–592.
- Gelfo, J.N., López, G.M., Abello, A., Reguero, M., Santillana, S., Marensi, S., 2013. The record of Paleogene ungulates and the demise of the South America-Antarctica land connection. *Symposium: The Scotia Arc: Geodynamic Evolution and Global Implications*. May 14th–16th, 2013, Armilla (Granada), Spain, Abstract volume, p. 53.
- Ghiglione, M.C., Yagupsky, D., Ghidella, M., Ramos, V.A. 2008. Continental stretching preceding the opening of the Drake Passage: evidence from Tierra del Fuego. *Geology* 36, 643–646.
- Goin, F.J., Case, J.A., Woodburne, M.O., Vizcaíno, S.F., Reguero, M.A., 1999. New discoveries of “opossum-like” marsupials from Antarctica (Seymour Island, Medial Eocene). *Journal of Mammalian Evolution* 6, 335–365.
- Goin, F., Tejedor, M., Bond, M., López, G., Reguero, M., 2000. Mamíferos Eocenos de Paso del Sapo, Chubut. *Ameghiniana* 37, 25R.
- Goin, F.J., Pascual, R., Tejedor, M.F., Gelfo, J.N., Woodburne, M.O., Case, J.A., Reguero, M.A., Bond, M., Lopez, G.M., Cione, A.L., Udrizar Sauthier, D., Balarino, L., Scasso, R.A., Medina, F.A., Ubaldon, M.C., 2006a. The earliest tertiary therian mammal from South America. *Journal of Vertebrate Paleontology* 26(2), 505–510.
- Goin, F.J., Reguero, M.A., Pascual, R., Koenigswald, W. von, Woodburne, M.O., Case, J.A., Vieytes, C., Marensi, S.A., Vizcaíno, S.F., 2006b. First gondwanatherian mammal from Antarctica. In: Francis, J.E., Pirrie, D., Crame, J.A. (Eds.), *Cretaceous-Tertiary high-latitude palaeoenvironments, James Ross Basin, Antarctica*. Geological Society of London, Special Publications 258, pp. 135–144.

- Goin, F.J., Zimicz, N., Reguero, M.A., Santillana, S.N., Marensi, S.A., Moly, J.J., 2007. New mammal from the Eocene of Antarctica, and the origins of the Microbiotheria. *Revista de la Asociación Geológica Argentina* 62, 597-603.
- Goloboff, P., Farris, J.S., Nixon, K., 2003. T.N.T. Tree Analysis Using New Technology. Version 1.0. Program and documentation. Available from the authors and at www.zmuc.dk/public/phylogeny.
- Gosses, J., 2006. *Stratigraphy and ⁴⁰Ar/³⁹Ar geochronology of the Laguna del Hunco Formation: a lacustrine and sub-aerial caldera moat formation*. MS thesis. Univ. Wis. Madison, 265 pp.
- Gurovich, Y., 2005. Bio-evolutionary aspects of Mesozoic mammals: description, phylogenetic relationships and evolution of the Gondwanatheria (Late Cretaceous and Paleocene of Gondwana). Ph.D. Thesis, Universidad de Buenos Aires, xiii + 546 pp.
- Iturralde-Vinent, M.A., 2006. Meso-Cenozoic Caribbean paleogeography: implications for the historical biogeography of the region. *Int. Geol. Rev.* 48(9), 791–827.
- Jianjun, L., Shuonan, Z., 1994. New materials of bird ichnites from Fildes Peninsula, King George Island of Antarctica and their biogeographic significance. In: Shen, Y. (Ed.), *Stratigraphy and palaeontology of Fildes Peninsula, King George Island, Antarctica*. State Antarctic Committee, Monograph 3, 239-249. Science Press, Beijing.
- Krause, D.W., Prasad, G.V.R., von Koenigswald, W., Sahni, A., Grine, F.E., 1997. Cosmopolitanism among Gondwanan Late Cretaceous mammals. *Nature* 390, 504–507.
- Lagabriele, Y., Godd ris, Y., Donnadi u, Y., Malavieille, J., Suarez, M., 2009. The tectonic history of Drake Passage and its possible impacts on global climate. *Earth and Planetary Science Letters* 279, 197–211.
- Lawver, L.A., Gahagan, L.M., 1998. Opening of Drake Passage and its impact on Cenozoic ocean circulation. In: Crowley, T.J., Burke, K.C. (Eds.), *Tectonic Boundary Conditions for Climate Reconstructions*. Oxford Univ. Press, Oxford, pp. 212– 223.
- Lawver, L.A., Gahagan, L.M., 2003. Evolution of Cenozoic seaways in the circum-Antarctic region. *Palaeogeogr. Palaeoclimatol. Palaeoecol.* 198, 11–38.
- Lawver, L.A., Gahagan, L.M., Dalziel, I.W.D., 2011. A different look at gateways: Drake Passage and Australia/Antarctica. In: Anderson, J.B., Wellner, J.S. (Eds.), *Tectonic, Climatic, and Cryospheric Evolution of the Antarctic Peninsula*, pp. 5–33. Washington, DC: AGU.
- Leppe, M., Mihoc, M., Varela, N., Stinnesbeck, W., Mansilla, H., Bierma, H., Cisterna, K., Frey, E., Jujihara, T., 2012. Evolution of the Austral-Antarctic flora during the Cretaceous: New

- insights from a paleobiogeographic perspective. *Revista Chilena de Historia Natural* 85, 369-392.
- Livermore, R., Nankivel, A., Eagles, G., Morris, P., 2005. Paleogene opening of Drake Passage. *Earth and Planetary Science Letters* 236, 459-470.
- Livermore, R., Hillenbrand, C., Meredith, M., Eagles, G., 2007. Drake Passage and Cenozoic climate: an open and shut case? *Geochem. Geophys. Geosyst.* 8. doi:10.1029/2005GC001224.
- Lodolo, E., Donda, F., Tassone, A., 2006. Western Scotia Sea margins: improved constraints on the opening of the Drake Passage. *J. Geophys. Res.* 111. doi:10.1029/2006JB004361.
- MacPhee, R., Reguero, M.A., Strgnac, P., Nishida, M., Jacobs, P., 2008. Out of Antarctica: Paleontological reconnaissance of Livingston Island (South Shetlands) and Seymour Island (James Ross Group). *Journal of Vertebrate Paleontology*, 28, Supplement to Number 3:110A.
- Marensi, S.A., Reguero, M.A., Santillana, S.N., Vizcaíno, S.F., 1994. Eocene land mammals from Seymour Island, Antarctica: palaeobiogeographical implications. *Antarctic Science* 6, 3–15.
- Marensi, S.A., Santillana, S.N., Rinaldi, C.A., 1998. Stratigraphy of the La Meseta Formation (Eocene), Marambio (Seymour) Island, Antarctica. In: Casadio, S. (Ed.), *Paleógeno de América del Sur y de la Península Antártica*. Asociación Paleontológica Argentina, Publicación Especial 5, pp. 137-146. Buenos Aires.
- McKenna, M.C., 1973. Sweepstakes, filters, corridors, Noah's Arks, and Beached Viking Funeral Ships in palaeogeography. In: Tarling, D.H., Runkorn, S.K. (Eds.). *Implications of Continental Drift to the Earth Sciences*. Academic Press, New York, pp. 295–308.
- McKenna, M.C., 1975. Toward a phylogenetic classification of the Mammalia. In: Lockett, W.P.; Szalay, F.S. *Phylogeny of the primates: a multidisciplinary approach (Proceedings of Wenner Gren Symposium no. 61, Burg Wartenstein, Austria, July 6–14, 1974)*. New York: Plenum. pp. 21–46. doi:10.1007/978-1-4684-2166-8-2.
- McKenna, M.C., Bell, S. K., 1997. *The Classification of Mammals. Above species level*. Columbia University Press, 631 pp. New York.
- Mitchell, E.D., 1989. A new cetacean from the late Eocene La Meseta Formation, Seymour Island, Antarctic Peninsula. *Can. J. Fish. Aquat. Sci.* 46, 2219–2235.
- Montes, C., Cardona, A., McFadden, R., Morón, S.E., Silva, C.A., et al., 2012. Evidence for middle Eocene and younger land emergence in central Panama: implications for Isthmus closure. *Geol. Soc. Am. Bull.* 124, 780–99.

- Mörs, T., Gelfo, J., Reguero, M., Lorente, M., López, G., 2013. The oldest known (early Eocene) mammal from Antarctica. *73rd SVP Meeting*, Los Angeles, CA, *Journal of Vertebrate Paleontology* 33, Supplement, 181.
- Muizon, C. de, Cifelli, R.L., 2000. The “Condylarths” (archaic Ungulata, Mammalia) from early Palaeocene of Tiupampa (Bolivia): implications on the origin of the South American ungulates. *Geodiversitas* 22(1), 47-150.
- Norell, M., 1996. Ghost taxa, ancestors, and assumptions: a comment on Wagner. *Palaeobiology* 22, 453–455.
- Pascual, R., 2006. Evolution and geography: the biogeographic history of South American land mammals. *Ann.Mo. Bot. Garden* 93(2), 209–30.
- Pascual, R., Archer, M., Ortiz-Jaureguizar, E., Prado, J.L., Godthelp, H., Hand, S.H., 1992a. First discovery of monotremes in South America. *Nature* 356, 704–705.
- Pascual, R., Archer, M., Ortiz-Jaureguizar, E., Prado, J.L., Godthelp, H., Hand, S.J., 1992b. The first non-Australian monotreme: an early Paleocene South American platypus (Monotremata, Ornithorhynchidae). In: Augee, M.L. (Ed.), *Platypus and Echidnas*, pp. 1–14. Mosman, Aust.: R. Zool. Soc. N.S.W.
- Pascual, R., Ortiz-Jaureguizar, E., 2007. The Gondwanan and South American Episodes: two major and unrelated moments in the history of the South American mammals. *J. Mamm. Evol.* 14(2), 75–13.
- Pol, D., Norell, M., Siddall, M.E., 2004. Measures of stratigraphic fit to phylogeny and their sensitivity to tree size, tree shape, and scale. *Cladistics* 20, 64–75.
- Prasad, G.V.R., Verma, O., Sahni, A., Krause, D.W., Khosla, A., Parmar, V., 2007. A new Late Cretaceous gondwanatherian mammal from central India. *Proceedings of the Indian National Science Academy* 73(1), 17–24.
- Reguero, M.A., Gasparini, Z., 2007. Late Cretaceous–Early Tertiary marine and terrestrial vertebrates from James Ross Basin, Antarctic Peninsula: a review. In: Rabassa, J., Borla, M.L. (Eds.), *Antarctic Peninsula & Tierra del Fuego: 100 years of Swedish-Argentine scientific cooperation at the end of the world*, London, pp. 55-76, Taylor & Francis.
- Reguero, M.A., Vizcaíno, S F., Goin, F.J., Marensi, S.A., Santillana, S.N., 1998. Eocene high-latitude terrestrial vertebrates from Antarctica as biogeographic evidence. In: Casadio, S. (Ed.), *Paleógeno de América del Sur y de la Península Antártica. Asociación Paleontológica Argentina, Publicación Especial* 5, pp. 185-198.
- Reguero, M.A., Marensi, S.A., Santillana, S.N., 2002. Antarctic Peninsula and Patagonia Paleogene terrestrial environments: biotic and biogeographic relationships. *Palaeogeography, Palaeoclimatology, Palaeoecology* 2776, 1-22.

- Reguero, M.A., Marensi, S.A., 2010. Paleogene climatic and biotic events in the terrestrial record of the Antarctic Peninsula: an overview. In: Madden, R.H., Carlini, A.A., Vucetich, M.G., Kay, R.F. (Eds.), *The Paleontology of Gran Barranca: Evolution and Environmental Change through the Middle Cenozoic of Patagonia*. Cambridge, UK: Cambridge University Press, pp. 383–97.
- Reguero, M.A., Prevosti, F.J., 2010. Rodent-like notoungulates (Tyotheria) from Gran Barranca, Chubut Province, Argentina. In: Madden, R.H., Carlini, A.A., Vucetich, M.G., Kay, R.F. (Eds.), *The Paleontology of Gran Barranca: Evolution and Environmental Change through the Middle Cenozoic of Patagonia*. Cambridge, UK: Cambridge University Press, pp. 152–169.
- Reguero, M., Goin, F., Hospitaleche, C.A., Dutra, T., Marensi, S., 2013. *Late Cretaceous/ Paleogene West Antarctica Terrestrial Biota and Its Intercontinental Affinities*. Dordrecht: Springer, 120 pp.
- Rougier, G.W., Apesteguía, S., Gaetano, L.C., 2011. Highly specialized mammalian skulls from the Late Cretaceous of South America. *Nature* 479, 98–102.
- Scher, H.D., Martin, E.E., 2006. The timing and climatic influence of the opening of Drake Passage. *Science* 312, 428–430.
- Sigé, B., Archer, M., Crochet, J-Y, Godthelp, H., Hand, S., Beck, R., 2009. *Chulpasia* and *Thylacotinga*, late Paleocene–earliest Eocene trans-Antarctic Gondwanan bunodont marsupials: new data from Australia. *Geobios* 42(6), 813–23
- Sijp, W.P., England, M.H., 2004. Effect of the Drake Passage through flow on global climate. *J. Phys. Oceanogr.* 34, 1254–1266.
- Simpson, G.G., 1935a. Occurrence and relationships of the Río Chico fauna of Patagonia. *American Museum Novitates* 818, 1–21.
- Simpson, G.G., 1935b. Descriptions of the oldest known South American mammals, from the Río Chico Formation. *American Museum Novitates* 793, 1–25
- Simpson G.G., 1980. *Splendid Isolation: The Curious History of South American Mammals*. New Haven, CT: Yale Univ. Press, 266 pp.
- Spalletti, L.A., Franzese, J.R. 2007. Mesozoic paleogeography and paleoenvironmental evolution of Patagonia (southern South America). In: Gasparini, Z., Salgado, L., Coria, R.A. (Eds.), *Patagonian Mesozoic Reptiles*. Bloomington: Indiana Univ. Press, pp. 29–49.
- Tejedor, M.F., Goin, F.J., Gelfo, J.N., López, G.M., Bond, M., Carlini, A.A., Scillato-Yané, G.J., Woodburne, M.O., Chornogubsky, L., Aragón, E., Reguero, M.A., Czaplewski, N.J., Vincon, S., Martin, G.M., Ciancio, M.R., 2009. New Early Eocene mammalian fauna from western Patagonia, Argentina. *American Museum Novitates* 3638, 1–43.

- Toggweiler, J.R., Bjornsson, H., 2000. Drake Passage and paleoclimate. *J. Quat. Sci.* 15, 319–328.
- Vizcaíno, S.F., Bond, M., Reguero, M.A., Pascual, R., 1997. The youngest record of fossil land mammals from Antarctica, its significance on the evolution of the terrestrial environment of the Antarctic Peninsula during the late Eocene. *Journal of Paleontology* 71, 348–350.
- Vizcaíno, S.F., Reguero, M.A., Goin, F.J., Tambussi, C.P., Noriega, J.I., 1998. Community structure of Eocene terrestrial vertebrates from Antarctic Peninsula. In: Casadio, S. (Ed.), *Paleógeno de América del Sur y de la Península Antártica. Asociación Paleontológica Argentina, Publicación Especial 5*, pp. 177–183.
- Vizcaíno, S.F., Scillato Yané, G.J., 1995. An Eocene tardigrade (Mammalia, Xenarthra) from Seymour Island, West Antarctica. *Antarctic Science* 7, 407–408.
- Webb, S.D., 2006. The Great American Biotic Interchange: patterns and processes. *Ann. Mo. Bot. Garden* 93(2), 245–57.
- Wilf, P., Johnson, K.R., Cúneo, N.R., Smith, M.E., Singer, B.S., Gandolfo, M.A., 2005. Eocene plant diversity at Laguna del Hunco and Río Pichileufú, Patagonia, Argentina. *Am. Nat.* 165(6), 634–50.
- Wilf, P., Little, S.A., Iglesias, A., Zamalio, M.C., Gandolfo, M.A., *et al.*, 2009. *Papuacedrus* (Cupressaceae) in Eocene Patagonia, a new fossil link to Australasian rainforests. *Am. J. Bot.* 96(11), 2031–47.
- Woodburne, M.O., 2010. The Great American Biotic Interchange: dispersals, tectonics, climate, sea level and holding pens. *J. Mamm. Evol.* 17(4), 245–64.
- Woodburne, M.O., Zinsmeister, W.J., 1982. Fossil land mammal from Antarctica. *Science* 218, 284–286.
- Woodburne, M.O., Zinsmeister, W.J., 1984. The first land mammal from Antarctica and its biogeographic implications. *Journal of Paleontology* 58, 913–948.
- Zinsmeister, W.J., 1979. Biogeographic significance of the Late Mesozoic and Early Tertiary molluscan faunas of Seymour Island (Antarctic Peninsula) to the final break up of Gondwanaland. In: Gray, J., Boucot, A. (Eds.), *Historical biogeography, plate tectonics and the changing environment*, Proceedings, 37th annual biological colloquium and selected papers. Oregon State University Press, Corvallis, pp. 349–355.
- Zinsmeister, W.J., 1982. Late cretaceous-early tertiary molluscan biogeography of southern circum-Pacific. *Journal of Paleontology* 56, 84–102.

Figure captions

Fig. 1. Schematic geological map of the James Ross Basin, Weddell Sea, north-eastern Antarctic Peninsula. White areas are either the James Ross Island Volcanic Group or snow/ice cover. Locality key: DP, Drednought Point; BB, Brandy Bay; CL, Cape Lamb; SMC, Santa Marta Cove. Position of the Cretaceous-Paleogene boundary on Seymour (= Marambio) Island indicated by the symbol K/T.

Fig. 2. Polar stereographic projection to 45°S of the southern oceans at 60 m.y. Hypothesized land connections between South America, Antarctica and Australia are indicated by red squares. Abbreviations: TAS=Tasmania.

Fig. 3. Reconstruction of four endemic Early Eocene terrestrial mammals from Seymour (= Marambio) Island, Antarctic Peninsula. Above on the trees: on the left log, *Antarctodolops daily* (Marsupialia, Polydolopidae); on the right log, *Marambiotherium glaciensis* (Marsupialia, Microbiotheriidae). Underground: on the left, *Antarctodon sobrali* (Astrapotheria, Astrapotheriidae); on the right, *Notiolofof arquinoiensis* (Litopterna, Sparnotheriodontidae). They represent an Early Paleogene endemic radiation in West Antarctica in the final breakup of Gondwana. Artist: Jorge González.

Fig. 4. Simpson's "Stratum 1" (Paleocene-Eocene) of mammalian faunal succession in South America highlighting major events in SANU evolution. It is calibrated to the timescale on the left, but the events listed for the stratum are not. FA and LA represent First Appearance and Last Appearance, respectively.

Fig. 5. Polar stereographic plot of the reconstructed land connection (Weddellian Isthmus) between South America and the Antarctic Peninsula at Early Paleocene (Danian), the time of the Punta Peligro fauna. The subduction zone is shown with the teeth pointing in the direction of the down going slab. Abbreviations: MI, Malvinas (=Falkland) Islands; SG, South Georgia Island. Graphic and caption modified from Spalletti and Franzese (2007) and Lawver *et al.* (2011).

Fig. 6. Reconstruction of Patagonia (Early Paleocene). Modified from Spalletti and Franzese (2007). Black circles numbered indicate the Early Paleogene Gondwanan and post Gondwanan localities in the Chubut province, Argentina with terrestrial fauna discussed in the text: 1. Grenier Farm, Paso del Sapo, 2. Punta Peligro, 3. Bajo Palangana and 4. Laguna Fría, Paso del Sapo.

Fig. 7. Stratigraphically calibrated phylogeny and known Paleogene occurrences of Astrapotheria in Antarctica and South America. Geographic area provenance of included taxa is indicated

above each terminal taxon name. Minimum estimated times that these taxa diverged from their older sister taxa are based on ghost lineages indicated by coloured vertical lines. Phylogeny redrawn from Bond *et al.* (2011).

Fig. 8. Stratigraphically calibrated phylogeny and known Paleogene occurrences of Litopterna Sparnotheriodontidae in Antarctica and South America. Geographic area provenance of included taxa is indicated above each terminal taxon name. Minimum estimated times that these taxa diverged from their older sister taxa are based on ghost lineages.

Fig. 9. Stratigraphically calibrated phylogeny and known Paleogene occurrences of Notoungulata Typotheria in South America. Geographic area provenance of included taxa is indicated above each terminal taxon name. Minimum estimated times that these taxa diverged from their older sister taxa are based on ghost lineages. Phylogeny redrawn from Reguero and Prevosti (2010).

Table 1. Taxonomic list, stratigraphy, age, and references for the terrestrial and marine mammals from the Eocene La Meseta Formation of Seymour Island, James Ross Basin, Antarctic Peninsula.

Appendix 1. Character-taxon data matrix used for the phylogenetic analysis of Sparnotheriodontidae, the results of which are shown in Figure 7.

Appendix 2. Character state scores for Sparnotheriodontidae used in phylogenetic analyses.

Figure 2
[Click here to download high resolution image](#)

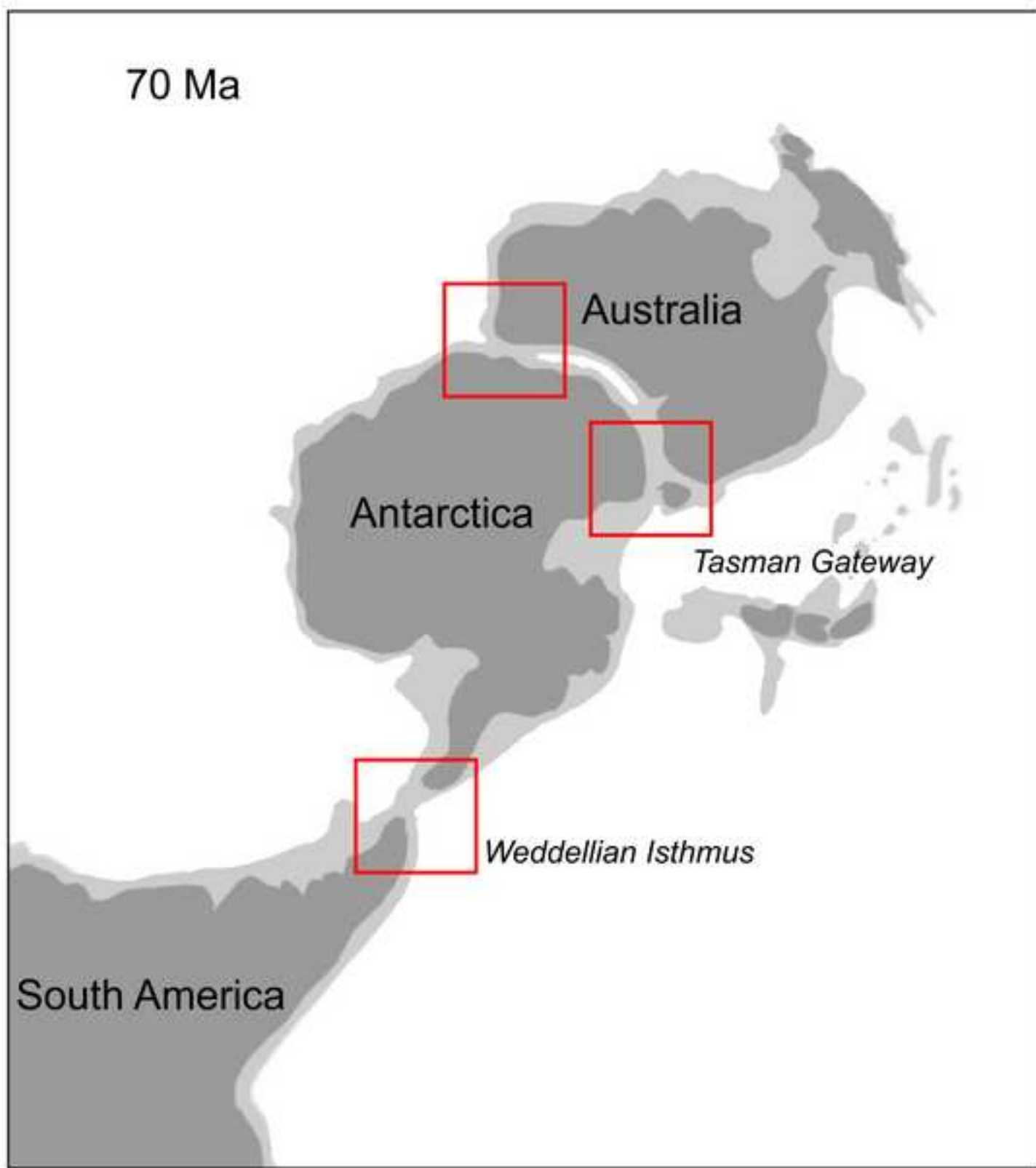
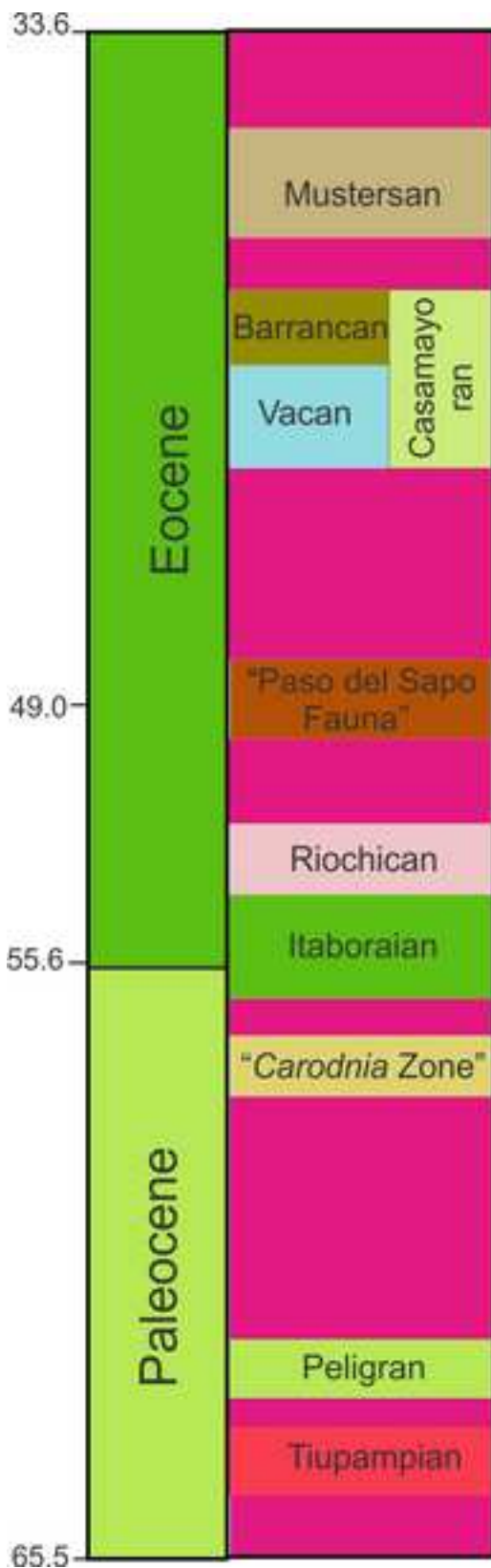


Figure 3
[Click here to download high resolution image](#)



Figure 4
[Click here to download high resolution image](#)



STRATUM 1

Archaic South American mammals (ungulates, xenarthrans, marsupials)

- major late Paleocene/early Eocene faunal turnover.
- brachydont notoungulates common and widespread during the Eocene.
- FA of notoungulates, litopterns, astrapotheres, pyrotheres.
- FA of the most "family level" notoungulate groups.
- FA and LA of hernricosborniids, archaeopithecids, oldfieldthomasiids, notopithecines.
- FA of macraucheniid, proterotheriid, adianthid, sparnotheriodontid and protolipternid litopterns.

Figure 5
[Click here to download high resolution image](#)

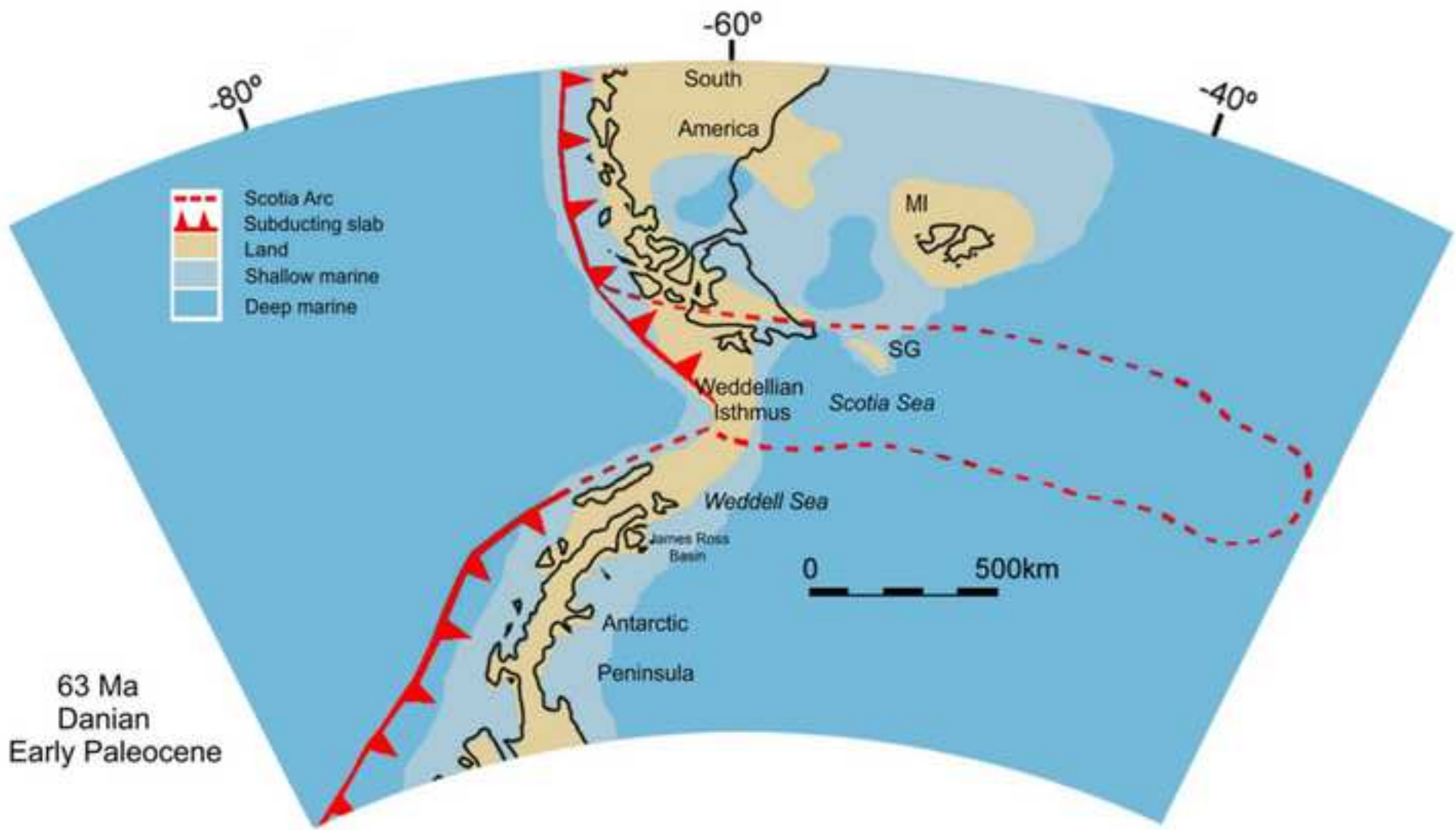


Figure 6
[Click here to download high resolution image](#)

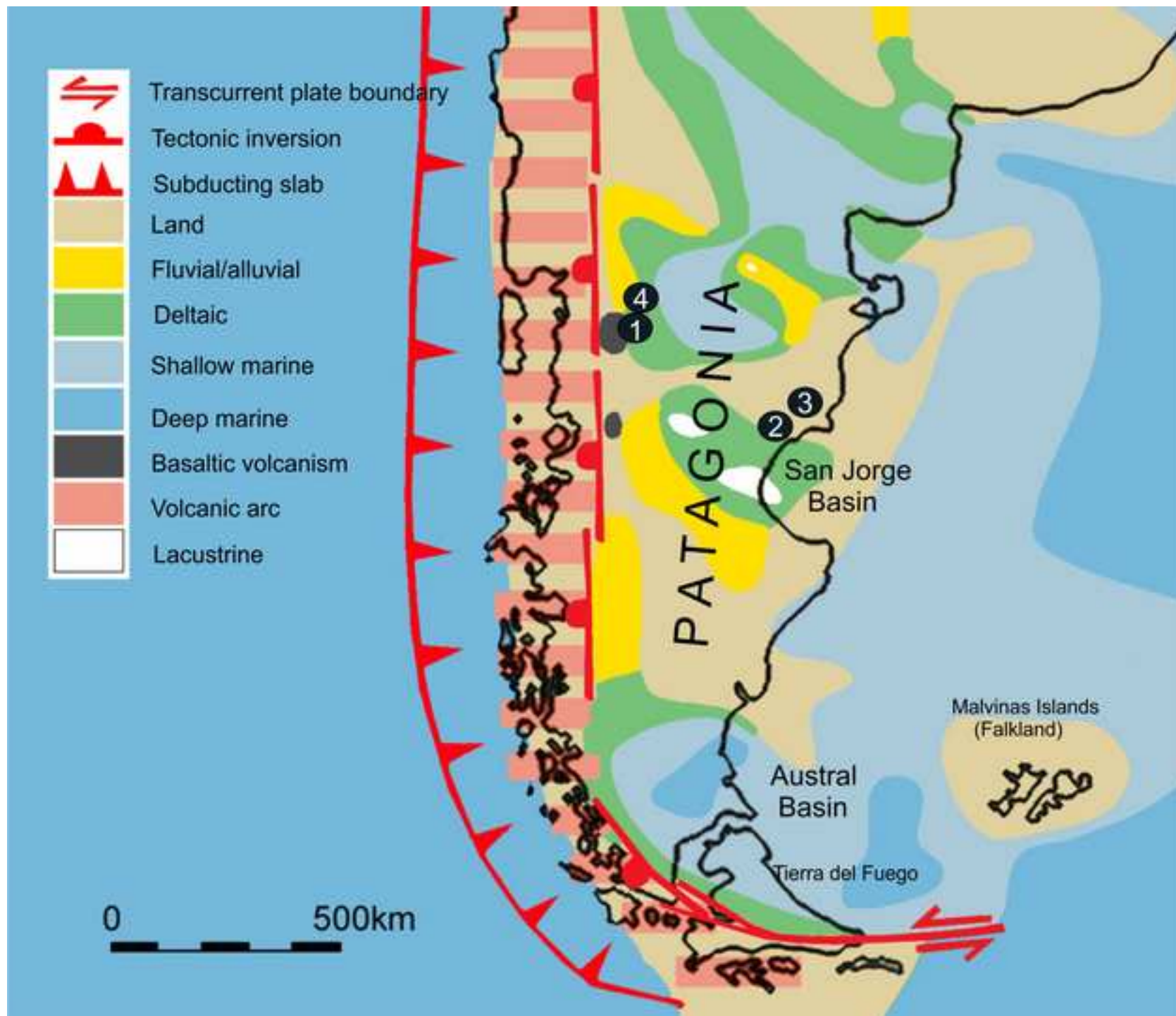


Figure 7
[Click here to download high resolution image](#)

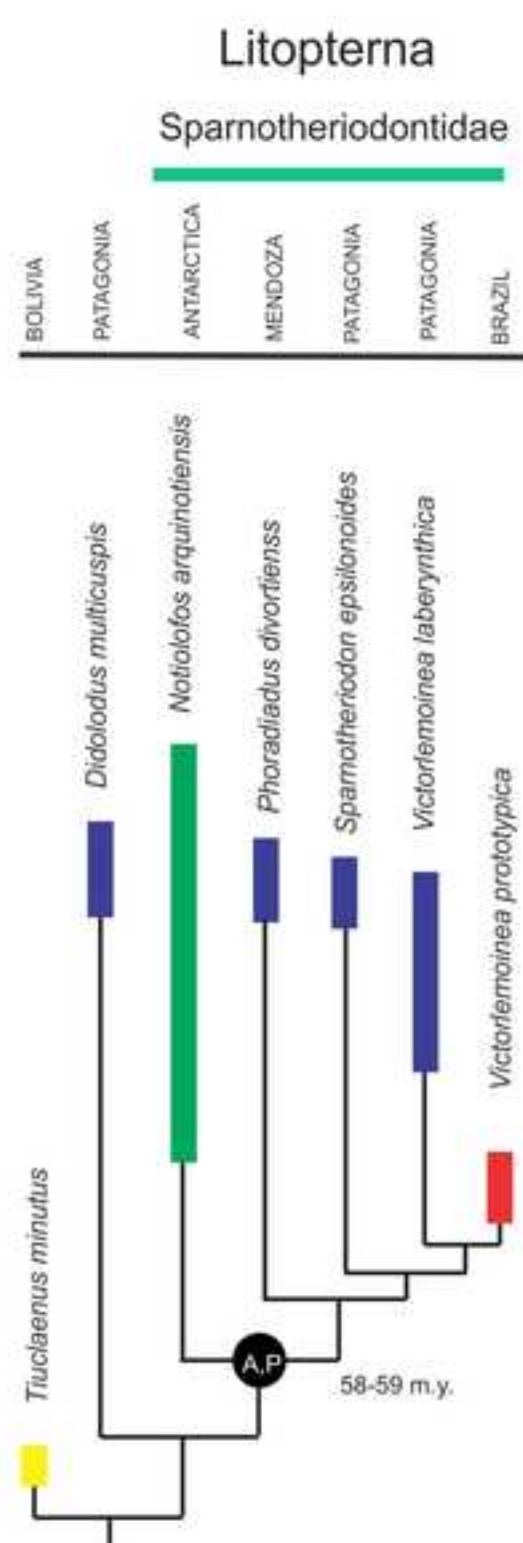
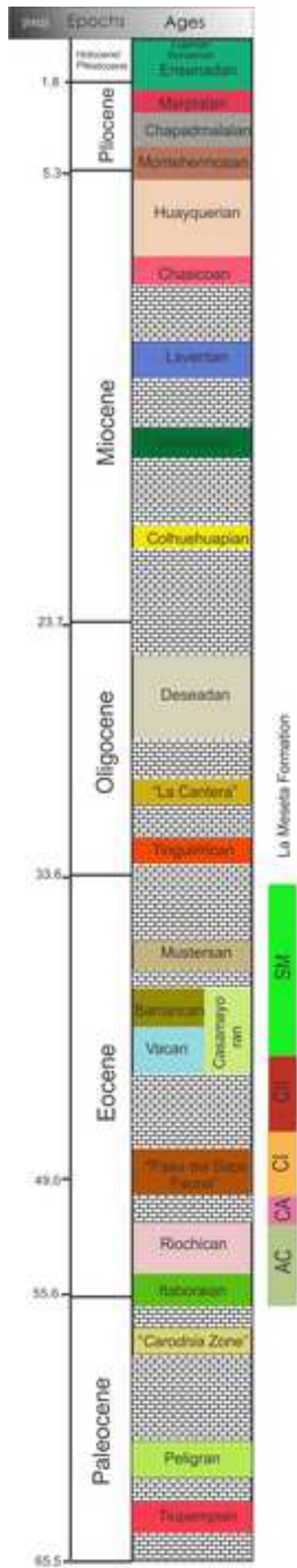


Figure 8
[Click here to download high resolution image](#)

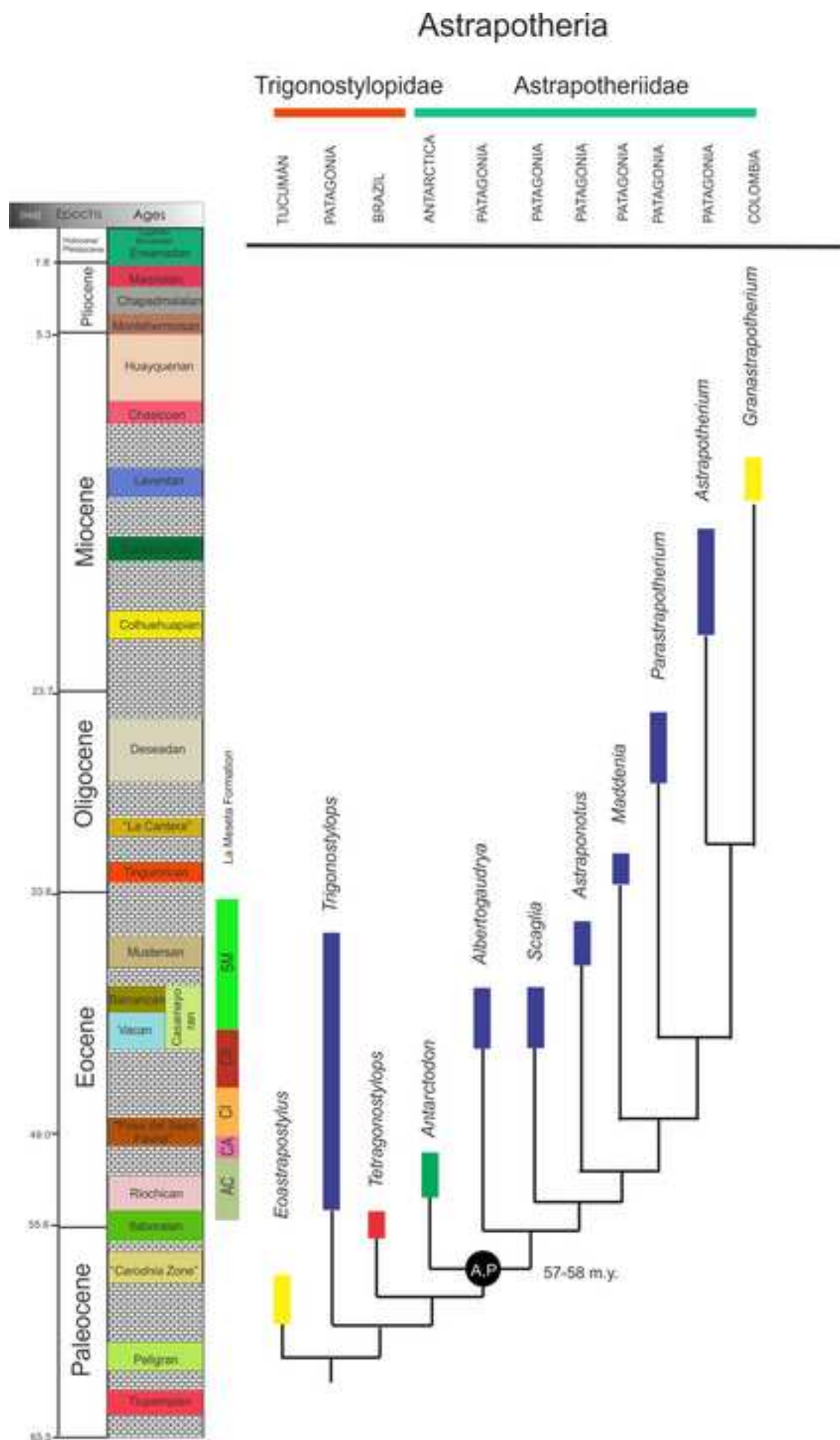


Figure 9
[Click here to download high resolution image](#)

Notoungulata (Typotheria)

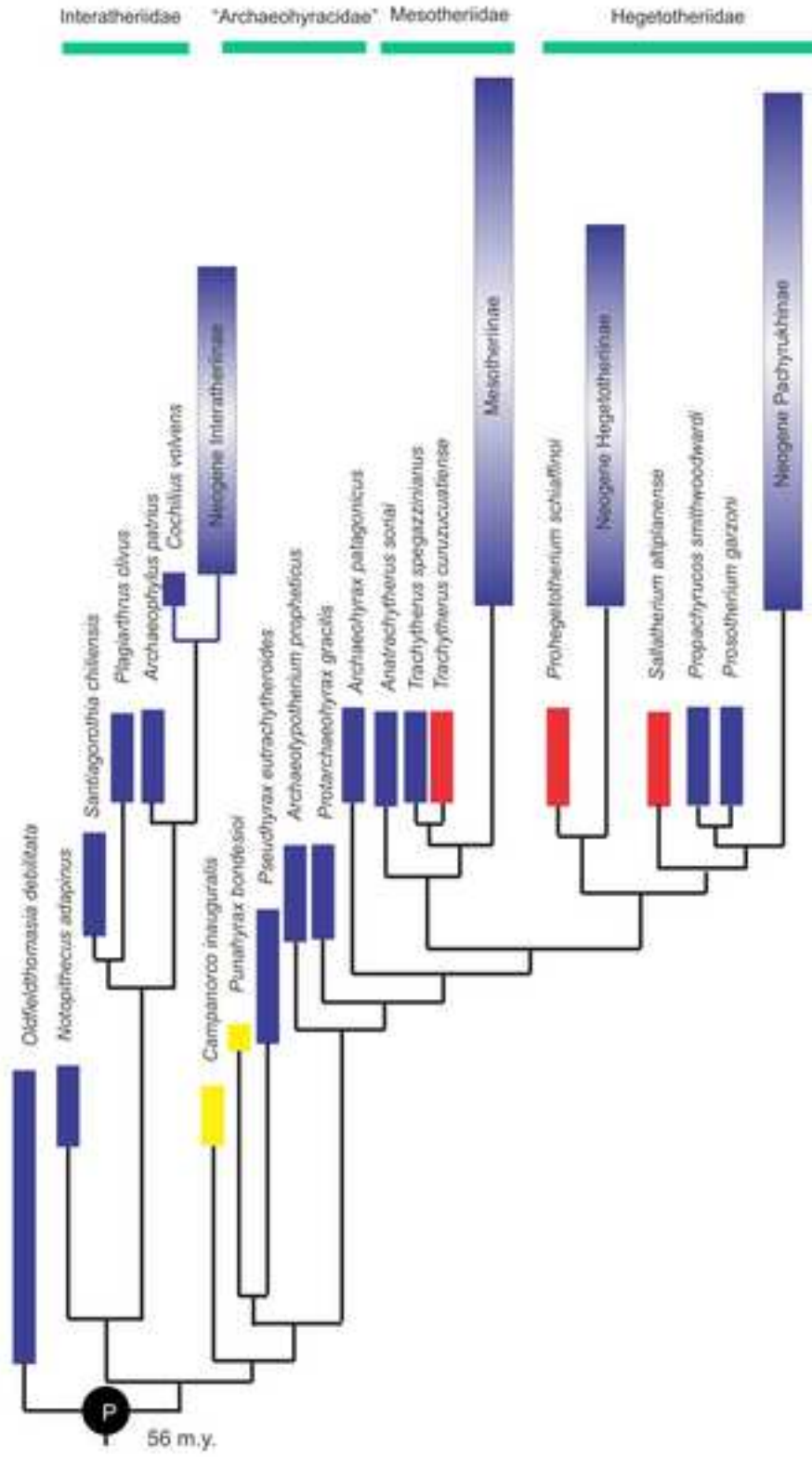
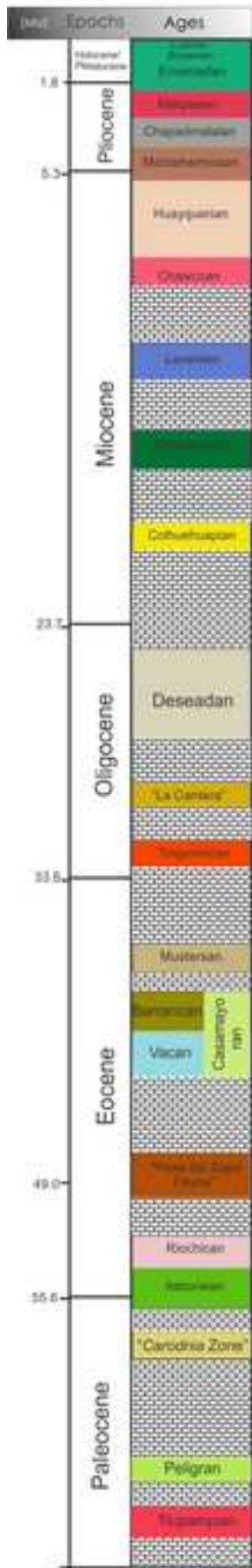


Table 1.- Taxonomic list, stratigraphy, age, and references for the terrestrial and marine mammals from the Eocene La Meseta Formation of Seymour Island, James Ross Basin, Antarctic Peninsula.

Taxon	Stratigraphy (Allomembers)	Age	Source
MAMMALIA			
POLYDOLOPIMORPHIA			
Fam. Prepidolopidae			
<i>Perrodelyphs coquinense</i>	Cu I	Early Eocene	Goin <i>et al.</i> (1999)
Fam. Polydolopidae			
<i>Antarctodolops dailyi</i>	Cu I	Early Eocene	Woodburne and Zinsmeister (1984)
<i>Antarctodolops mesetaense</i>	Cu I	Early Eocene	Chornogubsky <i>et al.</i> (2009)
MICROBIOTHERIA			
Fam. ?Microbiotheriidae			
<i>Marambiotherium glacialis</i>	Cu I	Early Eocene	Goin <i>et al.</i> (1999)
Fam. Woodburnodontidae			
<i>Woodburnodon casei</i>	Cu I	Early Eocene	Goin <i>et al.</i> (2007)
“DIDELPHIMORPHIA” *			
Fam. Derorhynchidae			
<i>Derorhynchus minutus</i>	Cu I	Early Eocene	Goin <i>et al.</i> (1999)
<i>Pauladelphys juanjoii</i>	Cu I	Early Eocene	Goin <i>et al.</i> (1999)
Derorhynchidae, gen. et sp. indet.	Cu I	Early Eocene	Goin <i>et al.</i> (1999)
Family indet.			
<i>Xenostylos peninsularis</i>	Cu I	Early Eocene	Goin <i>et al.</i> (1999)
?MARSUPIALIA			
Family, gen. and sp. indet.	Cu I	Early Eocene	Goin <i>et al.</i> (1999)
GONDWANATHERIA			
Fam. Sudamericidae			
<i>Sudamerica?</i> sp.	Cu I	Early Eocene	Goin <i>et al.</i> (2006b)
XENARTHRA			
Tardigrada indet.	Cu I	Early Eocene	Carlini <i>et al.</i> (1990)
SANU			
LITOPTERNA			
Fam. Sparnotheriodontidae			
<i>Notiolofof arquinoiensis</i>	Aca, Cu I, Cu II, Sub	Early Eocene/Late Eocene	Bond <i>et al.</i> (2006)
ASTRAPOTHERIA			
Fam. Astrapotheriidae			
<i>Antarctodon sobrali</i>	Cu I	Early Eocene	Bond <i>et al.</i> (2011)
“INSECTIVORA” or DRYOLESTIDA			
gen. et sp. indet.	Cu I	Early Eocene	MacPhee <i>et al.</i> (2009)
MAMMALIA INCERTAE SEDIS			
gen. et sp. indet. 1	Cam	Early Eocene	Vizcaíno <i>et al.</i> (1997)
gen. et sp. indet. 2	Cu I	Early Eocene	Marensi <i>et al.</i> (1994)
CETACEA			
Fam. Basilosauridae			
<i>Zeuglodon</i> sp.	Sub	Late Eocene	Borsuk-Bialynicka (1988)
<i>Pelagiceti</i> gen. et sp. nov.	Cu I	Early Eocene	Buono <i>et al.</i> (2011)
MYSTICETI			
CRENATICETI			
<i>Llanocetus denticrenatus</i>	Sub	Late Eocene	Mitchell (1989)

* “Didelphimorphia” in its traditional concept and contents is not regarded as a natural group.

Abbreviations: Aca, Acanthilados; Cam, Campamento; Cu I, *Cucullaea* I; Cu II, *Cucullaea* II; Sub, Submeseta.

APPENDIX 1

	1	2	3	4	5	6	7	8	9	10	11	12	13	14	15	16	17	18	19	20	21
<i>Tiucloenus minutus</i>	0	0	0	0	0	0	0	0	0	0	0	0	1	1	1	1	1	0	0	0	0
<i>Didolodus multicuspis</i>	1	1	0	0	0	0	0	0	0	0	0	0	0	0	0	0	0	1	1	1	1
<i>Notiolofof arquinotiensis</i>	?	0	1	1	1	0	2	1	1	2	1	1	2	2	2	2	2	0	0	2	2
<i>Sparnotheriodon epsilonoides</i>	?	?	?	?	?	?	?	?	?	?	?	?	?	?	?	?	?	?	?	?	?
<i>Victorlemoinea prototypica</i>	2	1	1	1	1	1	1	2	1	1	1	1	2	1	2	2	2	2	0	3	3
<i>Victorlemoinea labyrinthica</i>	2	?	1	1	1	0	1	?	1	?	1	1	2	1	2	2	2	2	0	?	?
<i>Phoradiadus divortiensis</i>	2	0	1	1	1	0	1	2	1	0	1	1	2	1	2	2	2	2	0	3	3

APPENDIX 2

Characters:

1. M1-2 hypocone: (0) absent; (1) present distal to the protocone; (2) present distolabial to the protocone.
2. M3 hypocone: (0) absent; (1) present.
3. M1-2 metaconule: (0) bunoid; (1) lofoid.
4. M3 metaconule: (0) bunoid; (1) lofoid.
5. M1-2 entocrist: (0) absent; (1) present.
6. M3 entocrist: (0) absent; (1) present.
7. M1-2 paraconule: (0) bunoid; (1) reduced as part of the anterolophid; (2) absent.
8. M3 paraconule: (0) bunoid; (1) absent; (2) reduced as part of the anterolophid.
9. M1-2 protocone: (0) preprotocristid and postprotocristid pointing to the paracone and metacone; (1) with entocristida contacting the hypocone and without postprotocrista.
10. M3 protocone: (0) preprotocristid and postprotocristid pointing to the paracone and metacone; (1) with entocristida contacting the hypocone and without postprotocrista; (2) projected to the anterolophid without entocristida or postprotocrista.
11. Paracone and metacone molars: (0) bunodont; (1) selenodont.
12. Linguo-metaconular crista: (0) absent; (1) present.
13. M1-2 protostile: (0) absent; (1) bunoid interrupting the continuity of the anterior cingula; (2) high and in continuity with the anterior cingula.
14. M3 Protostile: (0) absent; (1) lofoid, high and in continuity with the anterior cingula lofoid; (2) join to the protocone.
15. Mesostile: (0) absent; (1) bunoid; (2) as part of the ectoloph.
16. Parastile: (0) absent; (1) bunoid; (2) as part of the ectoloph.
17. Metastile: (0) absent; (1) bunoid; (2) as part of the ectoloph.
18. Preparaconular crista: (0) absent; (1) present and distinguish from the paraconule but as part of the anterolophid.
19. Posparaconular crista: (0) absent; (1) present.
20. Premetaconular crista: (0) absent; (1) present; (2) unified with the lophoid metaconule and non-differentiable; (3) unified with the lophid metaconule but differentiable.
21. Postmetaconular crista: (0) absent; (1) present; (2) unified with the lophoid metaconule and non-differentiable; (3) unified with the lophid metaconule but differentiable.
22. Metacone of the P4: (0) absent; (1) bunoid and almost fused with paraconid; (2) separated from the paracone and lophoid.
23. Metaconule of P4: (0) absent; (1) bunoid; (2) lofoid.
24. Paraconule of P4: (0) absent; (1) bunoid; (2) lofoid.
25. m1-3 paraconid: (0) present; (1) almost fused with the metaconid; (2) separated from the metaconid but integrated to a paralophid.
26. m1-3 paracristid: (0) present and concave distally; (1) part of the paralophid.
27. Lingual side of the trigonid in m1-3: (0) close; (1) with metaflexid.
28. Protocristid in m1-3: (0) almost transversal with V shape; (1) integrated to an oblique lophid.

29. Metaconid in m1-3: (0) well differentiated, bunoid; (1) integrated to a lophid; (2) integrated to a lophid with their distal part rounded.
30. Hipoconid in m1-3: (0) well differentiated, bunoid; (1) integrated to a lophid.
31. Entonconid in m1-2: (0) well differentiated, bunoid; (1) small and integrated to the hypolophid; (2) large and integrated to the hypolophid; (3) reduced and associated to the postcristid and entocristid.
32. Entoconid in m3: (0) well differentiated, bunoid; (1) small and integrated to a lophid; (2) large and integrated to a lophid.
33. Hipoconulid in m1-3: (0) well differentiated, bunoid; (1) absent and fused to a lophid.
34. Cristid obliqua: (0) well differentiated; (1) well differentiated with mesoconid; (2) forming part of a lophid.