

BRIEF COMMUNICATION

Risks associated with introduction of poeciliids for control of mosquito larvae: first record of the non-native *Gambusia holbrooki* in Argentina

M. B. CABRERA*, S. BOGAN†, P. POSADAS‡, G. M. SOMOZA*,
J. I. MONTOYA-BURGOS§ AND Y. P. CARDOSO*||

*Instituto de Investigaciones Biotecnológicas-Instituto Tecnológico Chascomús (CONICET-UNSAM), Av. Intendente Marino km 8,200 CC 164 7130 Chascomús, Buenos Aires, Argentina, †Fundación de Historia Natural “Félix de Azara”, Departamento de Ciencias Naturales y Antropología, Universidad Maimónides, Hidalgo 775 piso 7 (1405BDB), Buenos Aires, Argentina, ‡Laboratorio de Sistemática y Biología Evolutiva (LASBE), Facultad de Ciencias Naturales y Museo, Universidad Nacional de La Plata, Paseo del Bosque S/N, B1900FWA, La Plata, Buenos Aires, Argentina and §Department of Genetics and Evolution, University of Geneva, 30 quai Ernest Ansermet, 1211, Geneva 4, Switzerland

(Received 4 November 2016, Accepted 31 May 2017)

This study confirms the presence of two species of the non-native mosquitofish *Gambusia* in Argentina. The risks that they represent to native biota, their potential dispersal in the region, and their effectiveness in mosquito larvae control are discussed.

© 2017 The Fisheries Society of the British Isles

Key words: *col*; cryptic species; Cyprinodontiformes; exotic species; *Gambusia*; mosquitofish.

The mosquitofishes *Gambusia holbrooki* Girard 1859 and *Gambusia affinis* (Baird & Girard 1853) are small fishes of the family Poeciliidae native to freshwater basins of the east coast of the U.S.A. Over the past century, they have been introduced in many areas worldwide owing to their presumed ability to control mosquito larvae (García-Berthou *et al.*, 2005). The characteristic broad diet and physiological tolerance of species of *Gambusia* Poey 1854, their rapid population growth, high genetic variability, aggressive behaviour, and dispersal tendencies (Stockwell & Henkanathgedara, 2011), make them capable of adapting to and becoming established in a wide variety of environments (Vidal *et al.*, 2010). *Gambusia affinis* has been included in a list of 100 invasive non-native species with the greatest cosmopolitan effect (Lowe *et al.*, 2000).

Gambusia affinis and *G. holbrooki* are markedly sexually dimorphic, with females significantly larger than males and males possessing an anal fin modified as

||Author to whom correspondence should be addressed. Tel.: +54 2241 430323; email: yamilapcardoso@gmail.com

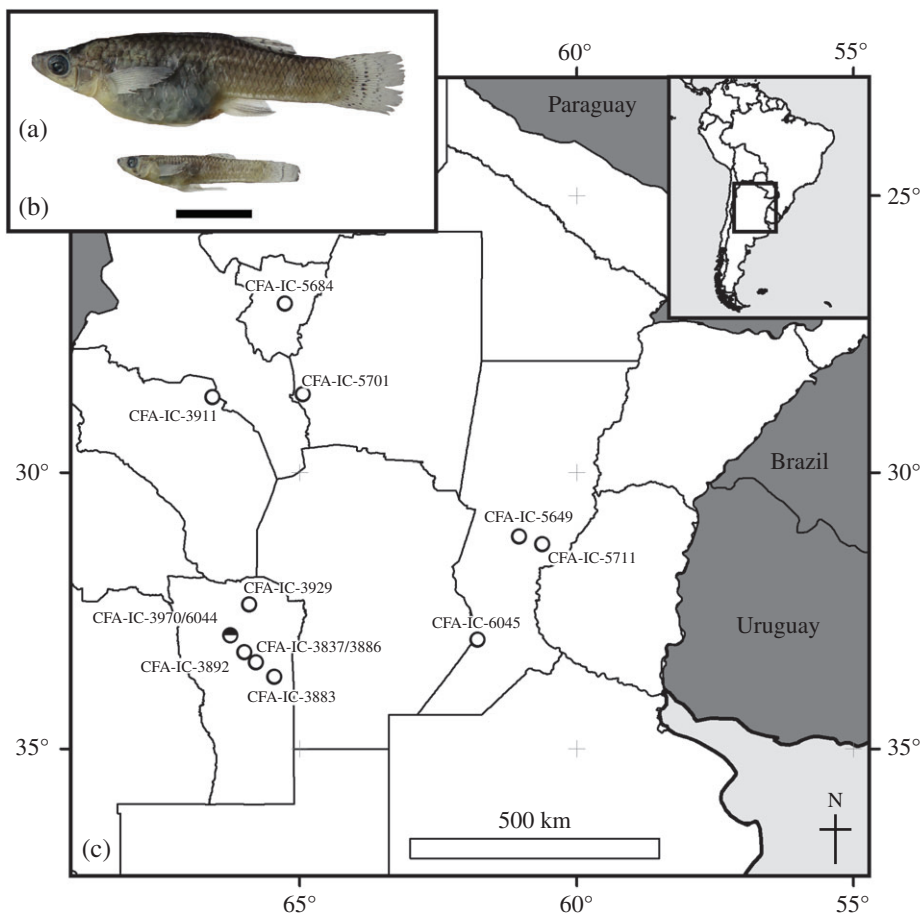


FIG. 1. (a) Female and (b) male *Gambusia holbrooki* collected at River Quinto, San Luis. Scale bar = 1 cm, (c) The sampling localities for *G. holbrooki* (○) and sympatric occurrence of *G. affinis* and *G. holbrooki* (●) in Argentina with collection codes (for more details see Appendix S1).

a gonopodium [Fig. 1(a)]. The species are similar morphologically and ecologically. Their primary diagnostic character is the morphology of the gonopodium, making females cryptic and a challenge to discriminate (Rauchenberger, 1989; Walters & Freeman, 2000). Identification of the species is a global issue, both in their native territory and in areas into which they have been introduced (Walters & Freeman, 2000). Representatives of *Gambusia* in Australia were not identified as *G. holbrooki* until the 1980s (Lloyd & Tomasov, 1985), with almost every earlier reference to Australian specimens given as *G. affinis*. In Europe, documents indicate that the introduction of both species took place in 1920, but in a genetic analysis of >400 samples in six European countries, Vidal *et al.* (2010) identified only *G. holbrooki*. In Argentina, specimens have always been designated as *G. affinis* (as in Cardoso *et al.*, 2015), but it is likely that several citations of *G. affinis* in the country are *G. holbrooki*.

Using the presence or absence of a gonopodium, samples were separated by sex and identified following Rauchenberger's (1989) criteria (Fig. 2). The rays on the

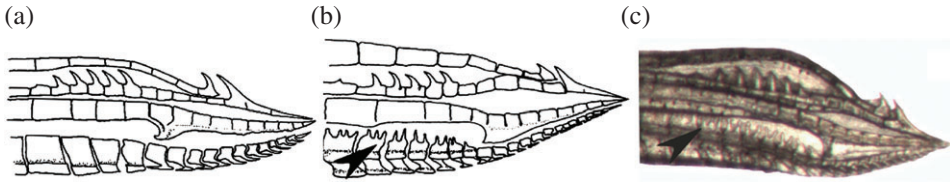


FIG. 2. (a) Gonopodium of *Gambusia affinis* and (b) *Gambusia holbrooki*, modified from Rauchenberger (1989). (c) Detail of the gonopodium of *G. holbrooki* from the River Quinto in San Luis Province. ▼, the characteristic spines of *G. holbrooki* on the third ray.

dorsal and anal fins were counted in females. Nevertheless, as Walters & Freeman (2000) suggested, these characters overlap between species (Appendix S1, Supporting Information). To identify cryptic species reliably, molecular methods, such as DNA barcoding using the mitochondrial cytochrome oxidase c subunit I marker (*col*, c. 650 bp), are recommended (Hebert *et al.*, 2003). Eight specimens were sequenced for the *col* gene and the sequences deposited in GenBank under accession numbers KX512843-50. The sequences were searched by basic local-alignment search tool (BLAST) against GenBank and in the Barcode Index Number (BIN) system in the Barcode of Life Data (BOLD) identification engine (Ratnasingham & Hebert, 2013). Five sequences were genetically identical and had 100% identity with Genbank accession number JN026703, corresponding to a specimen from the U.S.A. identified as *G. affinis*, and with BIN ACC2756, which also corresponds to this species. The three remaining sequences showed 99% similarity with GenBank accession numbers HQ937054/JN026706/JQ979157/JX049126, corresponding to *G. holbrooki* from the U.S.A. and Turkey, and 100% similarity with BIN ACC2757, which corresponds to *G. holbrooki*. Accurate identification to species is important for the monitoring of cryptic species and for the detection of introductions, and DNA barcoding has proven to be one of the most promising methods for this purpose.

To date, *G. affinis* is the only species of *Gambusia* reported in Argentina. In 1943, several populations were introduced for malaria control (Ringuelet *et al.*, 1967). Although it is believed that these fishes were imported from U.S.A. and Chile (acquired from the Departamento de Pesca y Caza de Chile where they were introduced in 1937), there has been no definitive information about the origin of the specimens or observations on the effects they have generated. The present study confirms the presence of two species of *Gambusia* in Argentina. Interestingly, only one occurrence locality was found for *G. affinis* in the Nogoli River, where the two species are sympatric [Fig.1 (b)]. The list of examined material and a brief description of *G. holbrooki* collected in Argentina can be found in Appendix S1.

The effect of *Gambusia* spp. in Argentina has not been studied, nor has the success of its invasion in the country. Several studies, however, on the effect of the Poeciliidae on native biota in other areas of the world have been published. Stockwell & Henkanaththegedara (2011) reviewed data of the extent to which these introduced species have caused decline in, or even extirpated native fish species through competition for resources, predation on eggs, larvae, and adults, transmission of parasites and disease, aggressive behaviour causing injury and mortality, and hybridization. It is

well documented that species of *Gambusia* can negatively affect invertebrates, plants, and amphibians (Pyke, 2008; Stockwell & Henkanathgedara, 2011).

In field sampling campaigns, the observed abundance of *Gambusia* in some environments was greater than that of native species (Y. P. Cardoso pers. obs.). Even without empirical data on the proliferation of *Gambusia* in the region, the observations of this study suggest that their distribution area has increased in recent years, typical of any successful invasion (Sakai *et al.*, 2001). Six previously unreported locations were found in Argentina, beyond the usual distribution of species of *Gambusia*. In these locations, 11 endemic species of Cyprinodontiformes with similar ecological adaptations to those of *Gambusia* were present and could be severely affected. The introduction of invasive species can generate extinction of other species, and has become one of the most common threats to endemic biodiversity. The current findings call attention to the effect that species of *Gambusia* may have on southern South America. Most of the sampled localities occur in endorheic river systems. These closed basins represent a natural restriction to dispersal of fishes; nevertheless, *Gambusia* was also found in the La Plata River basin. This catchment, with an area of 3.2 million km², extends into five countries: Brazil, Paraguay, Bolivia, Uruguay, and Argentina. Owing to their extreme flexibility in adapting to a wide variety of environments, the species of *Gambusia* reported here show potential for widespread invasion of southern South America.

Thousands of specimens of *Gambusia* have been introduced into South America in the past 5 years to control epidemic diseases transmitted by *Aedes* mosquitoes, including Dengue, Chikungunya, and Zika. Controlling mosquito populations is the primary strategy in combating vector-transmitted disease and the introduction of fishes as biological controls appears to have been successful *v.* alternatives such as the use of insecticides and herbicides (Gozlan *et al.*, 2010). Historically, public-health agencies have used poeciliids for control of mosquitoes. Nonetheless, the effects on the recipient ecosystems must be considered, as several introductions have resulted in biological invasions, a complex phenomenon with highly negative implications (Simberloff *et al.*, 2013). There is also uncertainty over the level of biological control that will be achieved and at what time scale, leading to considerable disagreement over the concept of bio-control (Gozlan *et al.*, 2010). The diet of *Gambusia* is diverse, including larval and adult crustaceans, insects, molluscs, annelids, algae, aquatic plants, detritus, and juveniles of other species of fishes (Rodríguez-Jiménez, 1989; García-Berthou, 1999; Rehage *et al.*, 2005; Nieva *et al.*, 2010). This has raised doubt as to its effectiveness in mosquito control (Pyke, 2008). Breeding *Aedes* mosquitoes are rarely found in the wilderness environments into which *Gambusia* is often released. These mosquitoes have peri-domiciliary habits (Healy *et al.*, 2014), and the diseases they transmit are predominantly urban. It is strongly recommended that public-health authorities control mosquito-borne disease *via* environmentally sound strategies, including development of vaccines as well as community education to reduce the peri-domestic mosquito populations (Healy *et al.*, 2014; Azevedo-Santos *et al.*, 2016).

Currently, public agencies expend considerable funds on the introduction of exotic species, with limited knowledge of their taxonomy, their processes of invasion, and the ecological risk involved, or of their efficacy in biological control (El-Sabaawi *et al.*, 2016; Servick, 2016). Cost–benefit analyses associated with the introduction of bio-controls are difficult to conduct, since the quantification of their risk

is challenging (Delfosse, 2005). This work represents the first record of populations of *G. holbrooki* in Argentina, c. 70 years after its introduction, suggesting that introductions have been done indiscriminately in this region, with no monitoring of results. Troubling newspaper reports from Argentina show that some health officials had recently released fishes to fight the transmission of dengue fever (New Report, 2012a, 2012b, 2016). Argentinian authorities should control and monitor this practice rigorously.

This study was supported by PICT2014-0580, 2015-Seed Money Grants for Latin America and Foundation G. & A. Claraz. We thank the Programa de Biodiversidad del Ministerio de Medio Ambiente de San Luis; Departamento Recursos Naturales de Tucumán, Dirección General de Bosques y Fauna de Santiago del Estero, Manejo Sustentable de los Recursos Pesqueros de Santa Fe and Secretaría de Ambiente de La Rioja for giving us the permission of collect fishes. We thank the Fundación de Historia Natural Félix de Azara for their invaluable collaboration, H. P. Castello and R. Crego for their comments and M. Zubimendi for the map. We also thank the G. & A. Claraz Donation.

Supporting Information

Supporting Information may be found in the online version of this paper:

Appendix S1. Examined material with a brief description of *G. holbrooki* collected in Argentina.

References

- Azevedo-Santos, V. M., Vitule, J. R., García-Berthou, E., Pelicice, F. M. & Simberloff, D. (2016). Misguided strategy for mosquito control. *Science* **351**, 675–675. <https://doi.org/10.1126/science.351.6274.675>.
- Cardoso, Y. P., Bogan, S., Meluso, J. M., Jáuregui, A., Cabrera, M. B. & Lizarralde, M. (2015). A contribution to the checklist of fishes of San Luis province, Argentina. *Check List* **11**, 1–9. <https://doi.org/10.15560/11.5.1760>.
- Delfosse, E. (2005). Risk and ethics in biological control. *Biological Control* **35**, 319–329. <https://doi.org/10.1016/j.biocontrol.2005.09.009>.
- El-Sabaawi, R. W., Frauendorf, T. C., Marques, P. S., Mackenzie, R. A., Manna, L. R., Mazzoni, R., Phillip, D. A. T., Warbanski, M. L. & Zandona, E. (2016). Biodiversity and ecosystem risks arising from using guppies to control mosquitoes. *Biology Letters* **12**, 20160590. <https://doi.org/10.1098/rsbl.2016.0590/>.
- García-Berthou, E. (1999). Food of introduced mosquitofish: ontogenetic diet shift and prey selection. *Journal of Fish Biology* **55**, 135–147. <https://doi.org/10.1111/j.1095-8649.1999.tb00663.x>.
- García-Berthou, E., Alcaraz, C., Pou-Rovira, Q., Zamora, L., Coenders, G. & Feo, C. (2005). Introduction pathways and establishment rates of invasive aquatic species in Europe. *Canadian Journal of Fisheries and Aquatic Sciences* **62**, 453–463. <https://doi.org/10.1139/f05-017>.
- Gozlan, R. E., Britton, J. R., Cowx, I. & Copp, G. H. (2010). Current knowledge on non-native freshwater fish introductions. *Journal of Fish Biology* **76**, 751–786. <https://doi.org/10.1111/j.1095-8649.2010.02566>.
- Healy, K., Hamilton, G., Crepeau, T., Healy, S., Unlu, I., Farajollahi, A. & Fonseca, D. M. (2014). Integrating the public in mosquito management: active education by community peers can lead to significant reduction in peridomestic container mosquito habitats. *PLoS One* **9**, e108504. <https://doi.org/10.1371/journal.pone.0108504>.
- Hebert, P. D., Cywinska, A., Ball, S. L. & deWaard, J. R. (2003). Biological identifications through DNA barcodes. *Proceedings of the Royal Society B* **270**, 313–321. <https://doi.org/10.1098/rspb.2002.2218>.

- Lloyd, L. N. & Tomasov, J. F. (1985). Taxonomic status of the Mosquitofish, *Gambusia affinis* (Poeciliidae), in Australia. *Australian Journal of Marine and Freshwater Research* **36**, 447–451. <https://doi.org/10.1071/MF9850447>.
- Nieva, L. B., Flores, L. & Herrera, C. L. (2010). Composición de la dieta del pez introducido *Gambusia affinis* (Baird & Girard 1853) en cuerpos de agua permanentes vinculados al Rio Juramento, Dpto. Metan, Salta, Argentina. *Ciencia* **5**, 13–26.
- Pyke, G. H. (2008). Plague minnow or mosquito fish? A review of the biology and impacts of introduced *Gambusia* species. *Annual Review of Ecology, Evolution, and Systematics* **39**, 171–191. <https://doi.org/10.1146/annurev.ecolsys.39.110707.173451>.
- Ratnasingham, S. & Hebert, P. D. (2013). A DNA-based registry for all animal species: the Barcode Index number (BIN) system. *PLoS One* **8**, e66213. <https://doi.org/10.1371/journal.pone.0066213>.
- Rauchenberger, M. (1989). Systematics and biogeography of the genus *Gambusia* (Cyprinodontiformes: Poeciliidae). *American Museum Novitates* **2951**, 1–74.
- Rehage, J. S., Barnett, B. K. & Sih, A. (2005). Foraging behaviour and invasiveness: do invasive *Gambusia* exhibit higher feeding rates and broader diets than their non invasive relatives? *Ecology of Freshwater Fish* **14**, 352–360. <https://doi.org/10.1111/j.1600-0633.2005.00109.x>.
- Ringuelet, R. A., Arámburu, R. H. & Alonso de Arámburu, A. S. (1967). *Los Peces Argentinos de Agua Dulce*. Buenos Aires: Comisión de Investigaciones Científicas de la Provincia de Buenos Aires, La Plata.
- Rodríguez-Jiménez, A. J. (1989). Hábitos alimenticios de *Micropterus salmoides* (Pisces: Centrarchidae), *Lepomis gibbosus* (Pisces: Centrarchidae) y *Gambusia affinis* (Pisces: Poeciliidae) en las orillas del embalse de Proserpina (Extremadura, España). *Limnética* **5**, 13–20.
- Sakai, A. K., Allendorf, F. W., Holt, J. S., Lodge, D. M., Molofsky, J., With, K. A., Baughman, S., Cabin, R. J., Cohen, J. E., Ellstrand, N. C., McCauley, D. A., O'Neil, P., Parker, I. M., Thompson, J. N. & Weller, S. G. (2001). The population biology of invasive species. *Annual Review of Ecology, Evolution, and Systematics* **32**, 305–332. <https://doi.org/10.1146/annurev.ecolsys.32.081501.114037>.
- Simberloff, D., Martin, J. L. & Genovesi, P. (2013). Impacts of biological invasions: what's what and the way forward. *Trends in Ecology & Evolution* **28**, 58–66. <https://doi.org/10.1016/j.tree.2012.07.013>.
- Stockwell, C. A. & Henkanaththegedara, S. M. (2011). Evolutionary conservation biology. In *Ecology and Evolution of Poeciliid Fishes* (Evans, J. P., Pilastro, A. & Schlupp, I., eds), pp. 128–141. Chicago, IL: University of Chicago Press.
- Vidal, O., García-Berthou, E., Tedesco, P. A. & García-Marín, J. L. (2010). Origin and genetic diversity of mosquitofish (*Gambusia holbrooki*) introduced to Europe. *Biological Invasions* **12**, 841–851. <https://doi.org/10.1007/s10530-009-9505-5>.
- Walters, D. M. & Freeman, B. J. (2000). Distribution of *Gambusia* (Poeciliidae) in a southeastern river system and the use of fin ray counts for species determination. *Copeia* **2000**, 555–559. [https://doi.org/10.1643/0045-8511\(2000\)000%5B0555:DOGPIA%5D2.0.CO;2](https://doi.org/10.1643/0045-8511(2000)000%5B0555:DOGPIA%5D2.0.CO;2).

Electronic References

- Lowe, S. J., Browne, M., Boudjelas, S. & De Poorter, M. (2000). *100 of the world's Worst Invasive Alien Species: A Selection from the Global Invasive Species Database*. Gland: IUCN Available at http://www.issg.org/pdf/publications/worst_100/english_100_worst.pdf.
- New Report. (2012a). Fontana es la primera ciudad chaqueña que comenzó a combatir el dengue con peces “gambusias”. Diario Norte. Available at <http://www.diarionorte.com/articulo/78832/fontana-es-la-primera-ciudad-chaquena-que-comenzo-a-combatir-el-dengue-con-peces-gambusias/>
- New Report. (2012b). Asociación ecologista río Mocoetá. Available at <http://evaluacionimpactosambientales.blogspot.com.ar/2012/11/dengue-combate-con-peces-que-comen.html/>

- New Report. (2016). Dengue: Baquero inició la siembra de peces en una de las cinco lagunas de Fontana. Venus FM Resistencia. Available at <http://www.venusfmresistencia.com.ar/noticias/provinciales/2322-dengue-baquero-inicio-la-siembra-de-peces-en-una-de-las-cinco-lagunas-de-fontana.html/>
- Servick, K. (2016). Ecologists raise alarm over releases of mosquito-killing guppies. Science Magazine <https://doi.org/10.1126/science.aal0304>. Available at <http://www.sciencemag.org/news/2016/10/ecologists-raise-alarm-over-releases-mosquito-killing-guppies/>