

# An enigmatic aquatic snake from the Cenomanian of Northern South America

Adriana Albino<sup>1</sup>, Jorge D. Carrillo-Briceño<sup>2</sup> and James M. Neenan<sup>3,4</sup>

<sup>1</sup>Departamento de Biología, Universidad Nacional de Mar del Plata-CONICET, Mar del Plata, Argentina

<sup>2</sup>Paläontologisches Institut und Museum, Universität Zürich, Zürich, Switzerland

<sup>3</sup>Oxford University Museum of Natural History, Oxford, United Kingdom

<sup>4</sup>Department of Earth Sciences, University of Oxford, Oxford, United Kingdom

## ABSTRACT

We report the first record of a snake from the Cretaceous of northern South America. The remains come from the La Luna Formation (La Aguada Member, Cenomanian of Venezuela) and consist of several vertebrae, which belong to the precloacal region of the vertebral column. Comparisons to extant and extinct snakes show that the remains represent a new taxon, *Lunaophis aquaticus* gen. et sp. nov. An aquatic mode of life is supported by the ventral position of the ribs, indicating a laterally compressed body. The systematic relationships of this new taxon are difficult to determine due to the scarcity of fossil material; it is, however, a representative of an early lineage of snakes that exploited tropical marine pelagic environments, as reflected by the depositional conditions of the La Aguada Member. *Lunaophis* is also the first aquatic snake from the Cenomanian found outside of the African and European Tethyan and Boreal Zones.

**Subjects** Paleontology

**Keywords** South America, Cretaceous, Venezuela, Snakes, La Luna Formation

## INTRODUCTION

Until recently, the oldest record of snakes has been from the Albian of Algeria (*Cuny et al., 1990*) and the Albian–Cenomanian of North America (*Gardner & Cifelli, 1999*), whereas a supposed snake from the Barremian of Spain (*Rage & Richter, 1994*) was recently excluded from the group (*Rage & Escuillié, 2003*). However, these records have few phylogenetically informative characters and add little to the knowledge of the origin and early evolution of snakes.

Using a combination of traditional node-based dating and novel fossil tip-dating methods, *Hsiang et al. (2015)* determined that the snake total-group originated during the middle Early Cretaceous (~128.5 Ma), with the crown-group following about 20 million years later, during the Albian stage. Nevertheless, new studies on squamate specimens from the Jurassic (Bathonian and Kimmeridgian), which include cranial and postcranial remains of at least four different species from the USA (*Diablophis gilmorei Caldwell et al., 2015*), Portugal (*Portugalophis lignites Caldwell et al., 2015*), and England (*Parviraptor estesi Caldwell et al., 2015* and *Eophis underwoodi Caldwell et al., 2015*), suggest that snakes have undergone habitat differentiation and evolutionary radiation at least since the mid-Jurassic (*Caldwell et al., 2015*).

Submitted 27 January 2016

Accepted 19 April 2016

Published 24 May 2016

Corresponding author

Adriana Albino, aalbino@mdp.edu.ar

Academic editor

Hans-Dieter Sues

Additional Information and  
Declarations can be found on  
page 21

DOI 10.7717/peerj.2027

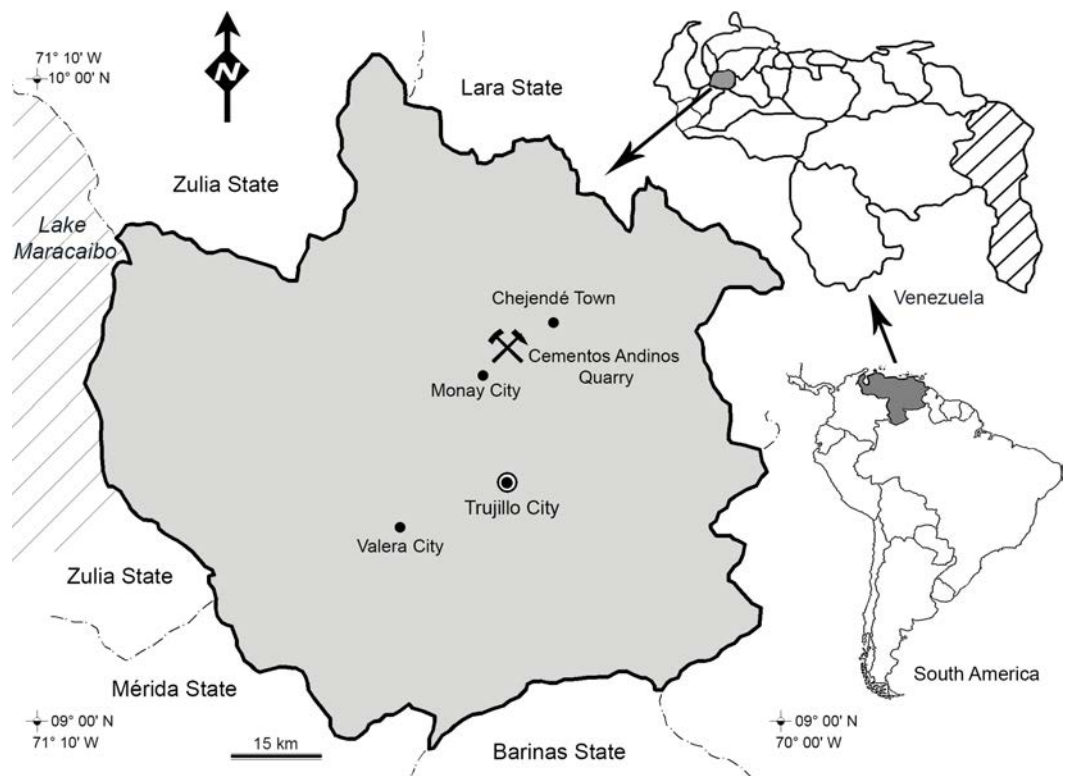
© Copyright

2016 Albino et al.

Distributed under

Creative Commons CC-BY 4.0

**OPEN ACCESS**



**Figure 1** Location map of the Cementos Andinos quarry, Trujillo estate, Venezuela.

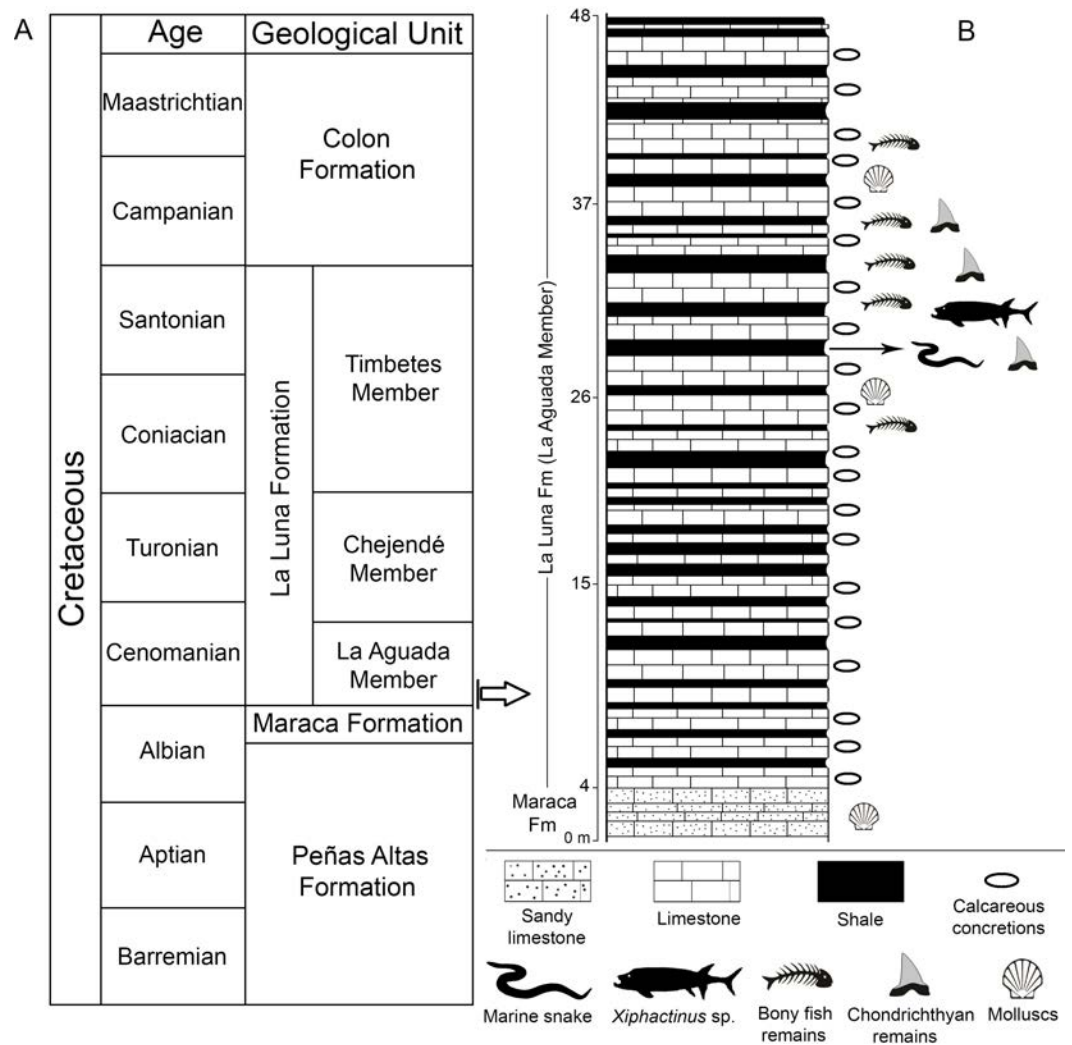
In South America, the oldest snakes are known from the Mesozoic of Brazil and Argentina. The Brazilian taxa consist of the putative four-limbed snake *Tetrapodophis amplexus* [Martill, Tischlinger & Longrich, 2015](#) from the Early Cretaceous (Aptian), and the small *Seismophis septentrionalis* [Hsiou et al., 2014](#) from the Late Cretaceous (Cenomanian). The fossil record from Argentina represents one of the richest fauna of early snakes, including the hind-limbed *Najash rionegrina* [Apesteguía & Zaher, 2006](#), from the Cenomanian ([Apesteguía & Zaher, 2006](#); [Zaher, Apesteguía & Scanferla, 2009](#); [Palci, Caldwell & Albino, 2013](#)), the medium-sized snake *Dinilysia patagonica* [Smith-Woodward, 1901](#), from the Santonian–Campanian ([Smith-Woodward, 1901](#); [Estes, Frazzetta & Williams, 1970](#); [Hecht, 1982](#); [Rage & Albino, 1989](#); [Caldwell & Albino, 2002](#); [Caldwell & Calvo, 2008](#); [Zaher & Scanferla, 2012](#)), the small “anilioid” *Australophis anilioides* [Gómez, Báez & Rougier, 2008](#), and diverse taxa of Madtsoiidae from the Campanian–Maastrichtian ([Albino, 1986](#); [Albino, 1994](#); [Albino, 2000](#); [Albino, 2007](#); [Albino, 2011a](#); [Albino, 2011b](#); [Martinelli & Forasiepi, 2004](#)). In this paper we describe a new taxon of aquatic snake based on vertebrae from the Cenomanian La Luna Formation in the Andes of Venezuela. This specimen represents the oldest known record of snakes from northern South America and adds substantial information about the diversity of the group during its evolution.

## Geological setting

The specimen was found in strata of the La Luna Formation (La Aguada Member), exposed in a cement quarry (Cementos Andinos Company) in the Andes of Venezuela, east of Lake Maracaibo, 10 km northeast of Monay in the Candelaria Municipality of Trujillo State (Fig. 1).

The Upper Cretaceous La Luna Formation is the most prolific petroleum source rock in western Venezuela and part of eastern Colombia (Zumberge, 1984; Tribovillard *et al.*, 1991; Zapata *et al.*, 2003), and is characterized by a sequence of marine rocks deposited under anoxic-poorly oxygenated conditions along the passive margin of northern South America during the Cenomanian to Campanian (Zapata *et al.*, 2003). This lithostratigraphic unit was originally named the 'La Luna Limestone' by Garner (1926) in the Quebrada La Luna of the Perijá range (Zulia state, western Venezuela), being formally described as a formation by Hedberg & Sass (1937). The lithology of the La Luna Formation is characterized by alternating black or dark-gray limestones and organic calcareous shales, in which the calcareous concretions are abundant (González de Juana, Iturralde de Arocena & Picard, 1980; Tribovillard *et al.*, 1991; Davis, Pratt & Sliter, 1999). Renz (1959) subdivided the La Luna Formation into three members that are exposed in the southeast of the Maracaibo basin in the Lara and Trujillo states: the lower La Aguada Member (~60 m thick of dense, black/dark-gray limestones and black or brown shales), the middle Chejendé Member (~80 m thick of black shales and marls), and the upper Timbetes Member (~90 m thick of laminated limestones and shales) (Fig. 2A). Siliceous and phosphatic horizons characterize the top of the unit, recognizing the Ftanite of Táchira (Coniacian-Santonian) and Tres Esquinas members (upper Campanian), respectively. The Tres Esquinas Member is well exposed in the Cordillera de Mérida and Perijá whereas the Ftanite of Táchira Member is exposed mainly at the southwest of the Cordillera de Mérida in Táchira State (González de Juana, Iturralde de Arocena & Picard, 1980; De Romero & Galea, 1995; Erlich *et al.*, 2000).

The outcrops of the Aguada Member in the Cementos Andinos quarry (Figs. 2B and 3A, 3B) present a succession of dense dark-gray limestones of up to ~60–70 cm thick, intercalated with laminated black, dark-gray or brown shales. Molluscs, fish remains, and hard, discoidal or ellipsoidal calcareous concretions, reaching up to 198 cm in diameter (Figs. 3C and 3D), are common throughout the section (Fig. 2B). In the studied section, the strata are inclined almost vertically (Fig. 3A), and its base overlays a fossiliferous dark-gray sandy limestone, which has been recognized in the Andes of Trujillo and Lara as the top of the upper Albian Maraca Formation (González de Juana, Iturralde de Arocena & Picard, 1980). Nevertheless, other authors (Renz, 1968; Erlich *et al.*, 1999) have used the name of La Puya Member to refer to a thin section (<30 m) at the top of the Peñas Altas Formation in the Andes of Lara and Trujillo. Therefore, the discrepancy between the use of Maraca Formation or La Puya Member for the thin sequence underlying the Aguada Member is still unresolved. A Cenomanian age for the La Aguada Member has been provided by planktonic foraminiferans and ammonites (Renz, 1959).



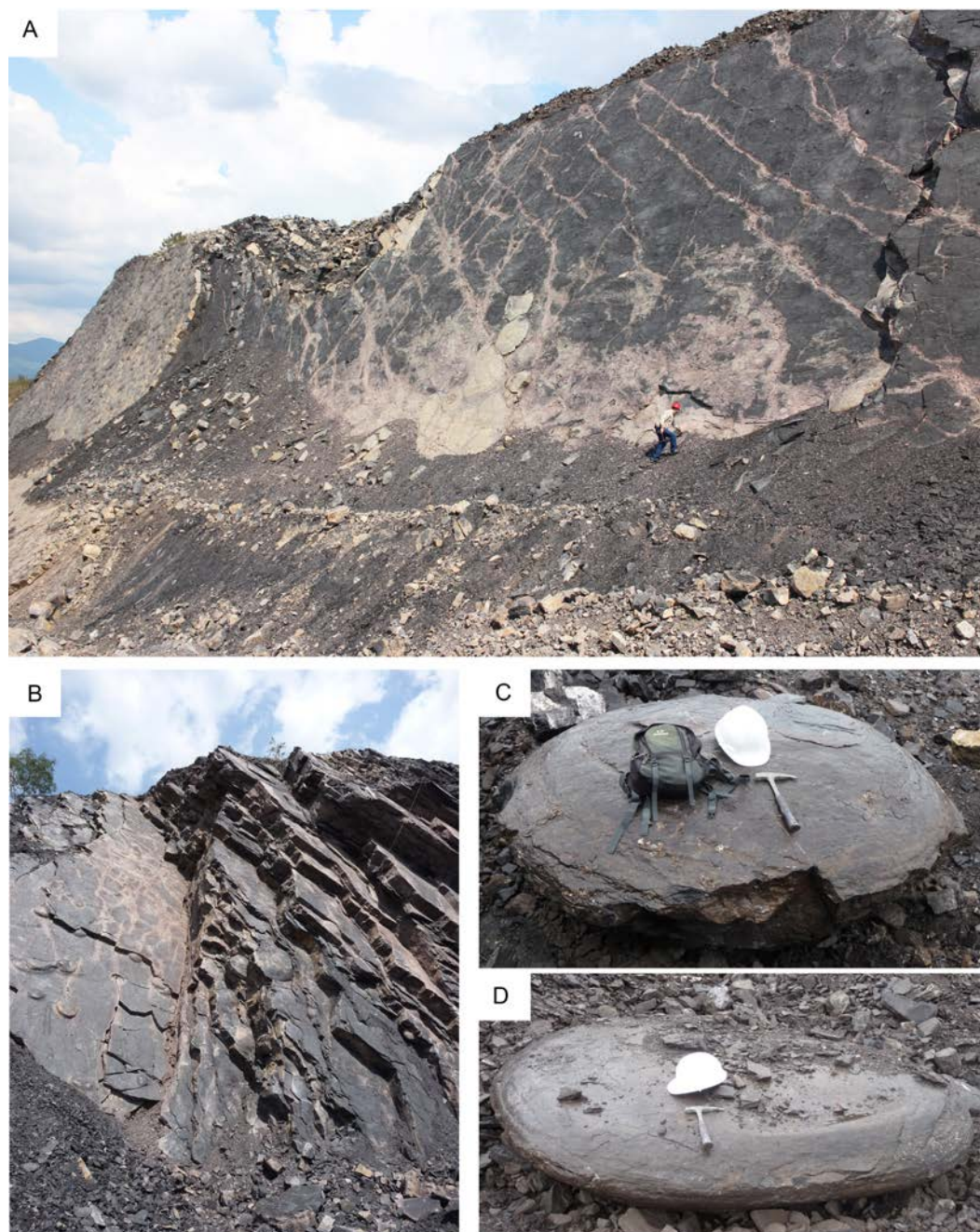
**Figure 2** Stratigraphic context. (A) Cretaceous lithostratigraphic units of the Chejendé region, near Monay city, Trujillo State (modified after [Renz, 1959](#) and [González de Juana, Iturralde de Arocena & Picard, 1980](#)); (B) Stratigraphic section of the Aguada Member in the Cementos Andinos quarry.

## MATERIALS AND METHODS

The studied specimen (MNCN-1827) is deposited in the Museo de Ciencias Naturales de Caracas, Venezuela. The fossil ([Figs. 4–6](#)) was compared directly with osteological material from a diverse group of present-day squamates in the Colección Herpetológica de la Universidad Nacional de Mar del Plata- Sección Osteología, Argentina (UNMdP-O). Measurements were taken with manual calipers.

Following the criteria of [Rage, Vullo & Néraudeau \(2016\)](#), pachyostosis s.l. actually corresponds to two processes: pachyostosis s.s. and osteosclerosis. The first is considered as the hyperplasy of periosteal cortices; it entails modifications of the morphology and its presence is therefore directly observable. Osteosclerosis corresponds to an increase of the

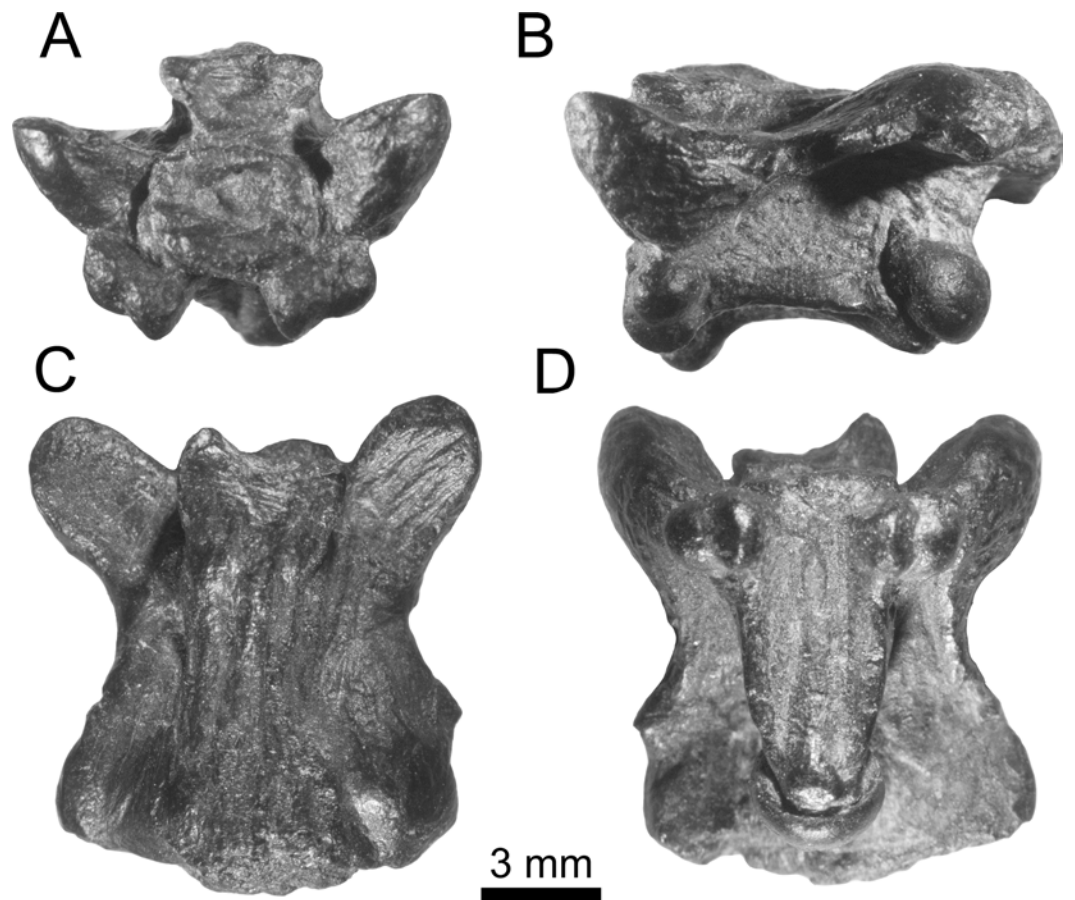




**Figure 3** Outcrops of the La Aguada Member in the Cementos Andinos quarry. (A) Fossiliferous strata; (B) Strata with calcareous concretions; (C), (D). Discoidal calcareous concretions.

compactness of the inner bone; it does not affect morphology and it can be seen only in bone sections.

The specimen was scanned using micro-computed tomography ( $\mu$ CT) with a Scanco Medical  $\mu$ CT80 machine at the Anthropological Institute, University of Zurich, Switzerland. The specimen was scanned using a voltage of 70 kV and an intensity of



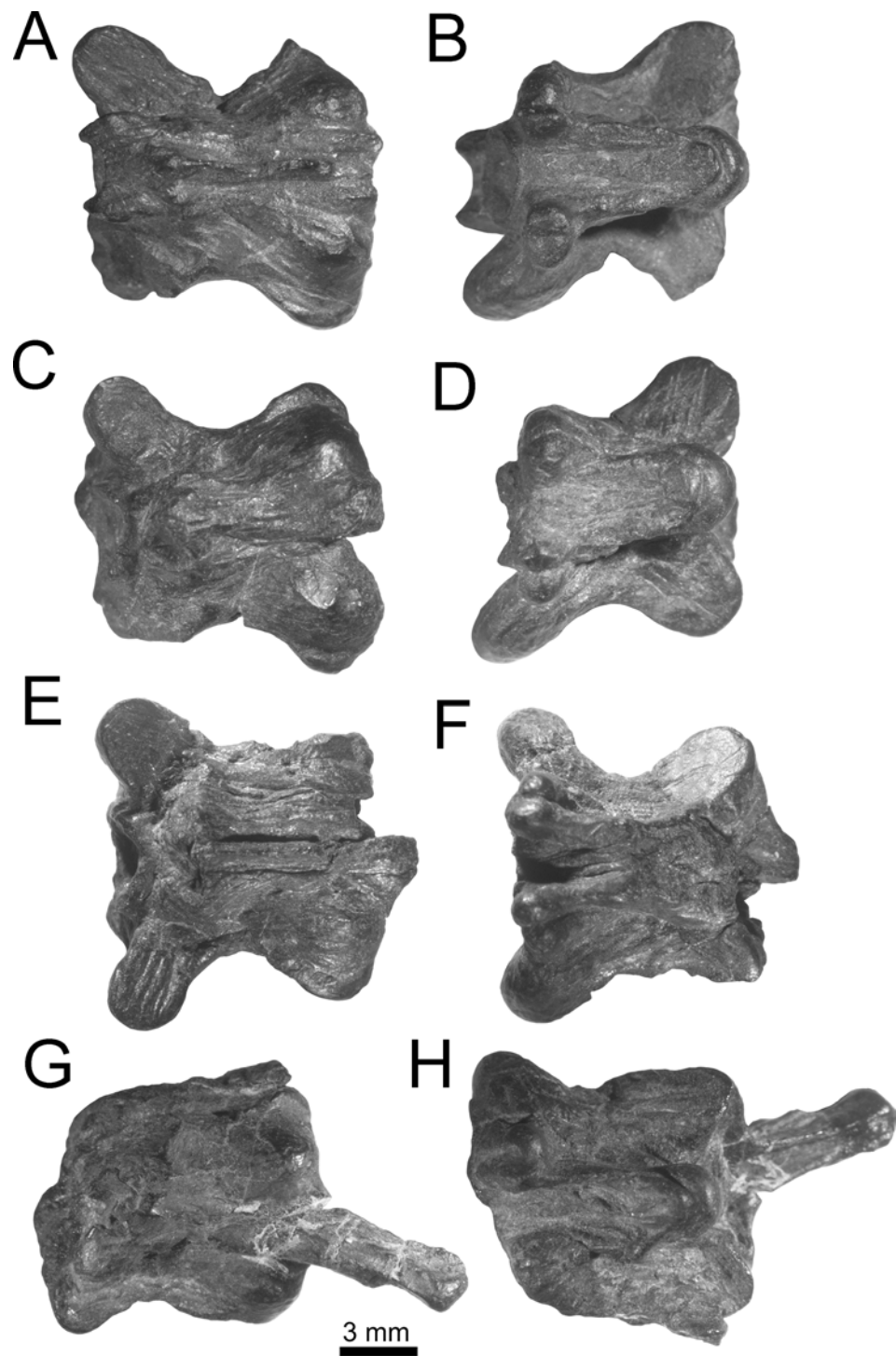
**Figure 4** Holotype of *Lunaophis aquaticus*. MNCN-1827-A, isolated precloacal vertebra. Anterior (A), left lateral (B), dorsal (C), and ventral (D) views.

114  $\mu$ A, resulting in a slice thickness/increment of 18  $\mu$ m. The resulting slice data were then processed and 3D models created using Avizo 8, revealing inner structures of the vertebrae such as thickened cortical bone.

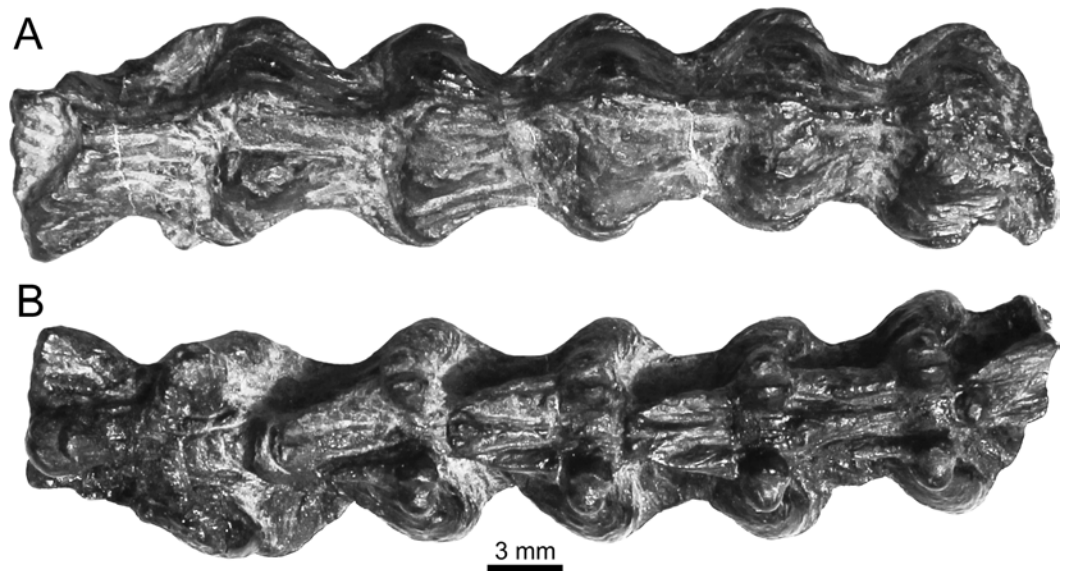
Phylogenetic relationships of fossil and Recent snakes proposed by [Hsiang et al. \(2015\)](#) are adopted in this paper. These authors present the most complete picture of the early evolution of snakes to date, including fossils, phenotypic and genetic data in combined phylogenetic analyses to reconstruct the ancestor of the snake total-group and of crown snakes, using both established and recently developed analytical methodologies.

The electronic version of this article in Portable Document Format (PDF) will represent a published work according to the International Commission on Zoological Nomenclature (ICZN), and hence the new names contained in the electronic version are effectively published under that Code from the electronic edition alone. This published work and the nomenclatural acts it contains have been registered in ZooBank, the online registration system for the ICZN. The ZooBank LSIDs (Life Science Identifiers) can be resolved and the associated information viewed through any standard web browser by





**Figure 5** Holotype of *Lunaophis aquaticus*, isolated precloacal vertebrae. (A–B), MNCN-1827-B; (C–D), MNCN-1827-C; (E–F), MNCN-1827-D; (G–H), MNCN-1827-E. Dorsal (A, C, E, G), and ventral (B, D, F, H) views.



**Figure 6** Holotype of *Lunaophis aquaticus*. MNCN-1827-F, articulated preloacal vertebrae. Dorsal (A) and ventral (B) views.

appending the LSID to the prefix <http://zoobank.org/>. The LSID for this publication is: urn:lsid:zoobank.org:pub:918B6879-8908-488F-876B-EA741DFF627B. The online version of this work is archived and available from the following digital repositories: PeerJ, PubMed Central and CLOCKSS.

## RESULTS

### Systematic paleontology

Squamata *Oppel, 1811*

Serpentes *Linnaeus, 1758*

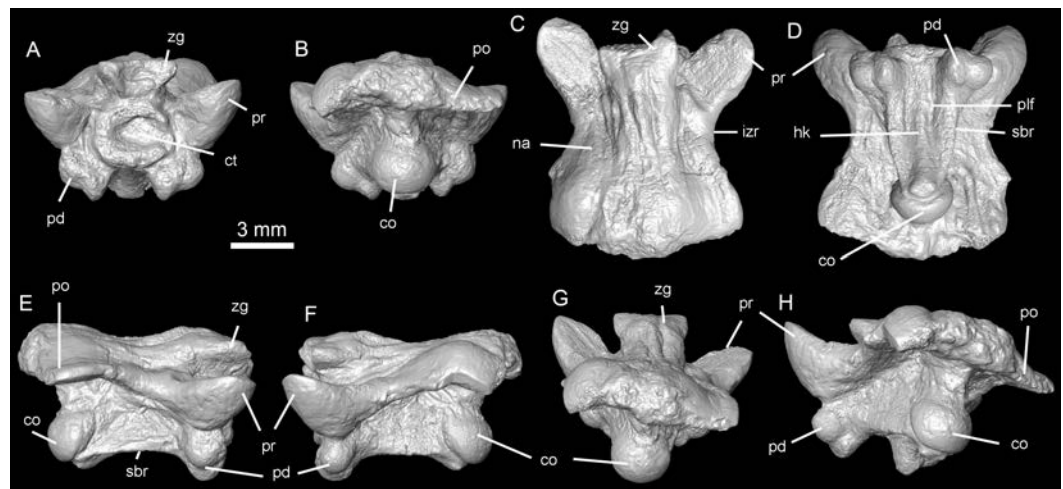
*Lunaophis aquaticus*, gen. et sp. nov. urn:lsid:zoobank.org:act:175D3D55-D85A-4013-8D30-563BAB7A4143

*Figs. 4–10*

*Holotype*. MNCN-1827. The type specimen is composed of vertebral remains in a small block of black shale, which belong to a single individual. All vertebrae are consistent in size. The remains include: an almost complete isolated preloacal vertebra (MNCN-1827-A, *Fig. 7*), an isolated preloacal vertebra that lacks the left prezygapophysis (MNCN-1827-B, *Fig. 8*), two isolated and incomplete preloacal vertebrae (MNCN-1827-C, *Figs. 9A–9D*, and MNCN-1827-D, *Figs. 9E–9H*), an isolated and partially preserved preloacal vertebra (MNCN-1827-E, *Figs. 9I–9L*), five articulated preloacal vertebrae (MNCN-1827-F, *Figs. 10A–10D*), and a poorly preserved vertebral fragment (MNCN-1827-G, *Figs. 10E–10H*).

*Type locality and horizon*. Cement quarry (Cementos Andinos company), located east of Lake Maracaibo, 10 km northeast of Monay, Trujillo State, Venezuela (*Fig. 1*). The





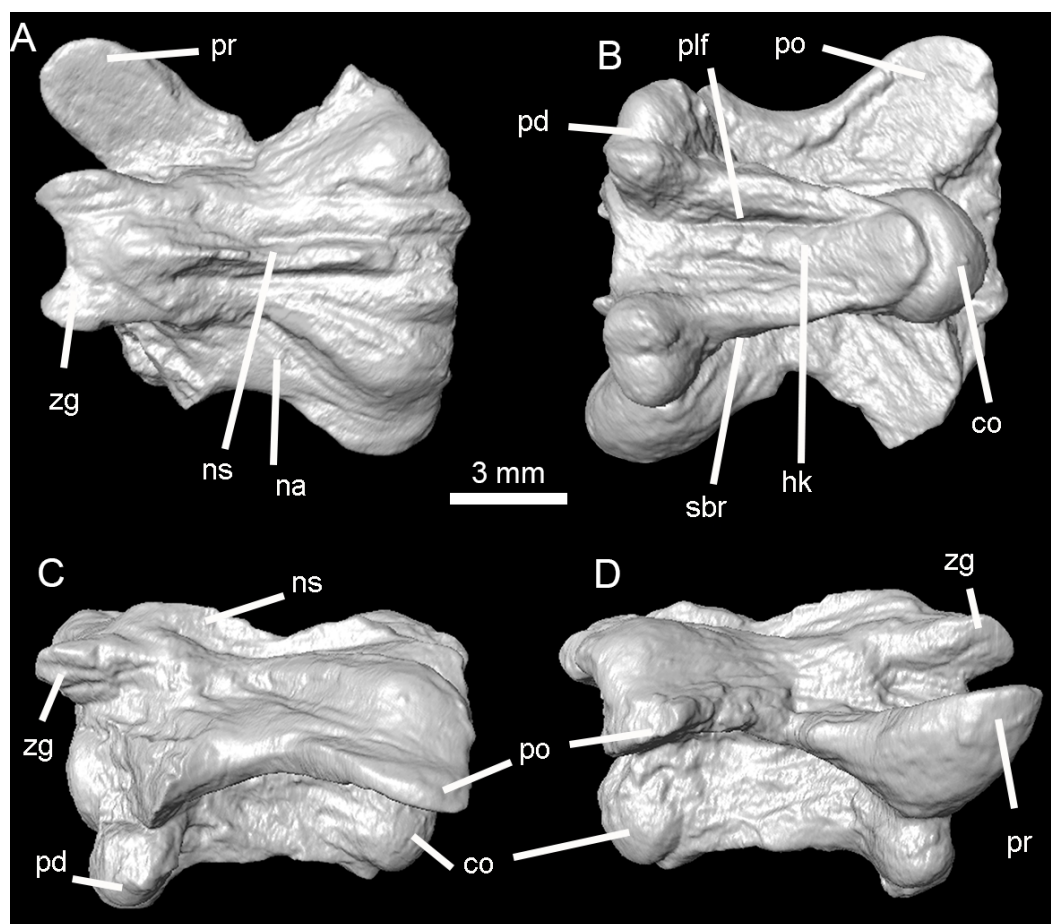
**Figure 7** Holotype of *Lunaophis aquaticus*. MNCN-1827-A, isolated precloacal vertebra. Anterior (A), posterior (B), dorsal (C), ventral (D), right lateral (E), left lateral (F), dorsoposterior (G), and postero-lateral (H) views; co, condyle; ct, cotyle; hk, haemal keel; izr, interzygapophyseal ridge; na, neural arch; pd, paradiapophysis; plf, paralymphatic fossa; po, postzygapophysis; pr, prezygapophysis; sbr, subcentral ridge; zg, zygosphene.

fossiliferous horizon is a black shale layer ~28 m above the base of the La Aguada Member of the La Luna Formation (Cenomanian, [Renz, 1959](#), [Fig. 2](#)).

**Etymology.** *Lunaophis*: snake from La Luna, denotes the origin of the material from rocks corresponding to La Luna Formation; Latin *aquaticus*: water-dwelling.

**Diagnosis.** Medizum-sized precloacal vertebrae bearing neural arch wide, depressed, and longer than the vertebral centrum, with a convex posterior edge covering the view of the condyle in dorsal view. Lateral walls of the arch arising from the midline from where they diverge ventrally to the subcentral ridges. Body of the prezygapophyses swollen and neural arch above postzygapophyses constituting protruded bulges (pachyostosis). High development of subcentral and interzygapophyseal ridges. Long and narrow vertebral centrum bearing a low and anterior placement of small paradiapophyses. Paradiapophyses closely spaced and strongly projected ventrally beyond the ventral rim of the cotyle through a short process. Articular surfaces of para- and diapophyses facing ventrally. Neural spine well-developed only along the anterior part of the precloacal region of the column as a posterior tubular process projecting free beyond the posterior edge of the neural arch. Neural spine drastically reduced in mid-trunk vertebrae, and finally lost, in posterior trunk vertebrae.

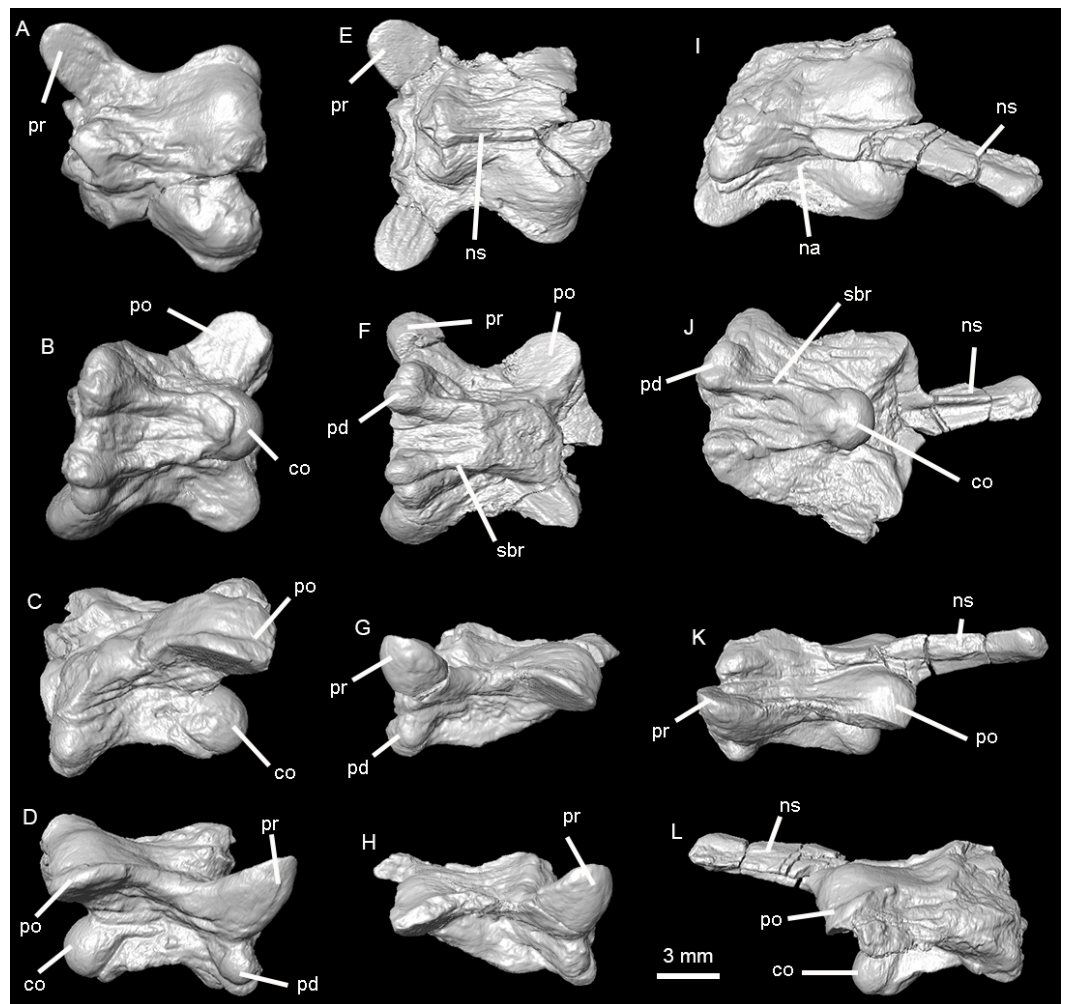
**Description.** In general, the vertebrae are medium-sized ([Table 1](#)), comparable to mid-trunk vertebrae of specimens of the extant boid *Epicrates alvarezii* that were around 1.5 m long in life (AA, pers. obs., 2015 on specimens from the UNMDP-O collection). They are low (H), long (nal, pr-po) and wide (pr-pr, po-po). The compared dimensions demonstrate that they are wider than high (pr-pr or po-po > H). Two of the best-preserved vertebrae are MNCN-1827-A ([Figs. 4](#) and [7](#)) and MNCN-1827-B ([Figs. 5](#) and [8](#)). Vertebra MNCN-1827-B is slightly smaller than vertebra MNCN-1827-A, but the general aspect and characters are



**Figure 8** Holotype of *Lunaophis aquaticus*. MNCN-1827-B, isolated preloacal vertebra. Dorsal (A), ventral (B), left lateral (C), and right lateral (D) views; co, condyle; hk, haemal keel; na, neural arch; ns, neural spine; pd, paradiapophysis; plf, paralymphatic fossa; po, postzygapophysis; pr, prezygapophysis; sbr, subcentral ridge; zg, zygosphenes.

the same, except for slight differences. The following comprehensive description is based on these vertebrae, although diagnostic characters are true for all.

In anterior view, the zygosphenes are well-developed and slightly wider than the cotyle ( $zgw > ctw$ ); it is thin in the middle and its dorsal edge is almost flat. The articular facets are relatively large and anteriorly oriented. The neural canal is small, with a round outline. The prezygapophyses are robust, inflated and large; they are borne at the ventral base of the neural canal and slant above the horizontal plane, but do not reach the level of the zygosphenal roof. There are no prezygapophyseal processes. The cotyle is large, nearly circular, and delimited by a well-marked rim. It is partially filled by sediment. There are strong depressions on both sides of the cotyle but the paracotylar foramen is visible only on the right side of vertebra MNCN-1827-A. In specimen MNCN-1827-B there is not a visible paracotylar foramen on the right side and it is broken on the left. The paradiapophyses are positioned ventral to the cotyle, distant from the prezygapophyseal



**Figure 9** Holotype of *Lunaophis aquaticus*. (A–D) MNCN-1827-C, isolated preclacal vertebra; (E–H) MNCN-1827-D, isolated preclacal vertebra; (I–L), MNCN-1827-E, isolated anterior vertebra. Dorsal (A, E, I), ventral (B, F, J), left lateral (C, G, K), and right lateral (D, H, L) views; co, condyle; na, neural arch; ns, neural spine; pd, paradiapophysis; po, postzygapophysis; pr, prezygapophysis; sbr, subcentral ridge.

surfaces and close to each other; they project ventrally with a short and constricted process separating them from the vertebral centrum. The articular surfaces are small, with clearly distinctive parapophyses and diapophyses facing ventrally and strongly projecting beyond the ventral rim of the cotyle.

In posterior view, the neural arch is depressed and forms a protruded bulge above the postzygapophysis as a strong, inflated convexity, especially on vertebra MNCN-1827-B on both sides and on vertebra MNCN-1827-A on the left. These swollen paired posterior portions of the neural arch platform are interpreted as pachyostosis. The zygantra filled by sediment, which also extends over the dorsal condyle. The roof of the neural arch of vertebra MNCN-1827-B is proportionally less depressed than in specimen MNCN-1827-A, and the zygantra are larger. Vertebra MNCN-1827-A has the left postzygapophysis distally broken whereas in vertebra MNCN-1827-B the fracture is on the right. The postzygapophyseal

**Table 1** Measures available on vertebrae of *Lunaophis aquaticus*.

Measures (in mm)	MNCN-1827-A	MNCN-1827-B	MNCN-1827-C	MNCN-1827-D
cl	8.44	8.00	7.62	—
cow	3.00	2.86	3.00	—
cth	—	2.82	3.00	2.58
ctw	—	3.10	3.18	3.00
H	6.34	5.70	7.16	—
naw	6.44	6.18	6.34	6.84
nal	10.16	9.22	—	—
po-po	—	9.62	—	—
prl	3.56	3.34	3.50	3.26
prw	2.56	2.76	2.40	2.84
pr-po	9.52	—	9.20	9.14
pr-pr	10.00	—	—	10.94
zgh	—	0.40	—	—
zgw	3.66	3.60	—	—

**Notes.**

Abbreviations: cl, centrum length; cow, condyle wide; cth, cotyle high; ctw, cotyle wide; H, high of the vertebra; naw, neural arch wide; nal, neural arch length; po-po, distance between postzygapophyses; prl, prezygapophyses length; prw, prezygapophysis wide; pr-po, distance between pre- and postzygapophyses of the same side; pr-pr, distance between prezygapophyses; zgh, zygosphen high; zgw, zygosphen wide.

surfaces are large and slightly inclined above the horizontal. There are no parazygantral foramina. The condyle is large and more or less round. The posterior end of a wide hemal keel is slightly visible ventral to the condyle.

In dorsal view, the neural arch is long and wide, with the posterior edge convex in vertebra MNCN-1827-A and almost straight in vertebra MNCN-1827-B. None of the condyle is visible in this view. The interzygapophyseal constriction is concave but not especially deep. The interzygapophyseal ridges are strongly developed and protrude laterally beyond the level of the lateral walls and subcentral ridges. They connect the pre- and postzygapophysis of the same side. The articular surfaces of the prezygapophyses are large, oval, longer than wide, and anterolaterally oriented. The zygosphen is well-developed and concave in the middle. It is partially broken on the left side of specimen MNCN-1827-A whereas it is complete on vertebra MNCN-1827-B. Vertebra MNCN-1827-A does not have neural spine; only a minor crest restricted to the anteriormost part of the neural arch. It is limited by narrow and short depressions at each side. Posteriorly to it, the surface of the arch is smooth. In contrast, a well-defined but very low neural spine is developed, but partially broken in the middle, along most of the roof of the neural arch in vertebra MNCN-1827-B. Longitudinal and marked ridges are extended anteroposteriorly on either side of the neural spine; they are laterally flanked at both sides by deep grooves. These crests and grooves are prominent especially in the posterior half, reaching the posterior border of the neural arch. Distally, over each postzygapophysis, the neural arch forms protruded, swollen bulges representing pachyostosis. The bulging is not developed on the right side of vertebra MNCN-1827-A producing asymmetry.



In ventral view, the vertebral centrum is long ( $cl > naw$ ) and narrow, slightly wider anteriorly than posteriorly, but not markedly triangular in section. The subcentral ridges are well defined and prominent (Figs. 7–9) and the paralympathic fossae are well-developed (Figs. 7 and 8). The cotyle is almost not exposed ventrally whereas the condyle is well exposed from this view. The ventral surface of the centrum is concave, with a distinctive but weakly developed rounded hemal keel, which is smooth anteriorly and more defined and wider posteriorly. The short precondylar constriction is marked. There no subcentral foramina. The paradiapophyses are small with articular surfaces well exposed ventrally. The di- and parapophyseal surfaces are distinct and separated by a short and deep constriction.

In lateral view, the vertebrae are long, with significantly depressed neural arch roofs. Anteriorly, the neural arch extends beyond the level of the cotyle due to the anterior projection of the zygosphenes. Posteriorly, the neural arch is longer than the vertebral centrum ( $nal > cl$ ), extending beyond the level of the condyle. The neural arch in the vertebra MNCN-1827-B is slightly shorter than in specimen MNCN-1827-A. The neural spine is partially broken in vertebra MNCN-1827-B but it would have been long and low, as a thin crest developed from the base of the zygosphenes and almost until the posterior end of the neural arch. The zygosphenal surfaces are prominent, oval, longer than wide, and more anteriorly than dorsally oriented. Posteriorly, on either side, the roof of the neural arch are inflated forming the mentioned hemispheric bulge above the postzygapophysis. As a result, the outline of the neural arch is concave in lateral view. The absence of a neural spine in vertebra MNCN-1827-A produces a more deeply concave arch in lateral view than in vertebra MNCN-1827-B. The prezygapophyses are large, swollen, and anterolaterally oriented. The interzygapophyseal crest is well marked, laterally projected, and strongly separates the roof from the lateral walls of the neural arch. The distance between the interzygapophyseal crests ( $naw$ ) is much higher than the distance between the lateral walls of the neural arch where they contact with the roof. This is because the lateral walls are borne near the sagittal axis of the vertebra. They diverge dorsoventrally from this point to the subcentral ridges. This structure produces a prominent shelf-like arch roof of the neural arch on each side between the pre- and postzygapophysis (Fig. 7H). There are no lateral foramina. The vertebral centrum is long but shorter than the neural arch ( $nal > cl$ ). The subcentral ridges are prominent. The main axis of the condyle is not strongly inclined from the horizontal plane. The paradiapophyses are low, and clearly separated from the centrum by a deep constriction at the end of a short projection. They are small and ventrally extend beyond the ventral edge of the condyle and subcentral ridges.

Vertebra MNCN-1827-C (Figs. 5 and 9) is approximately the same size as vertebra MNCN-1827-B. The zygosphenes, left prezygapophysis, and part of the posterior part of the neural arch are not preserved. This vertebra is slightly deformed. There is no neural spine, as in vertebra MNCN-1827-A.

Vertebra MNCN-1827-D (Figs. 5 and 9) is also similar in size to specimen MNCN-1827-B. It has lost most of the vertebral centrum, right postzygapophysis, and the zygosphenes. In dorsal view, the posterior edge of the neural arch is strongly convex medially, more than in vertebra MNCN-1827-A.

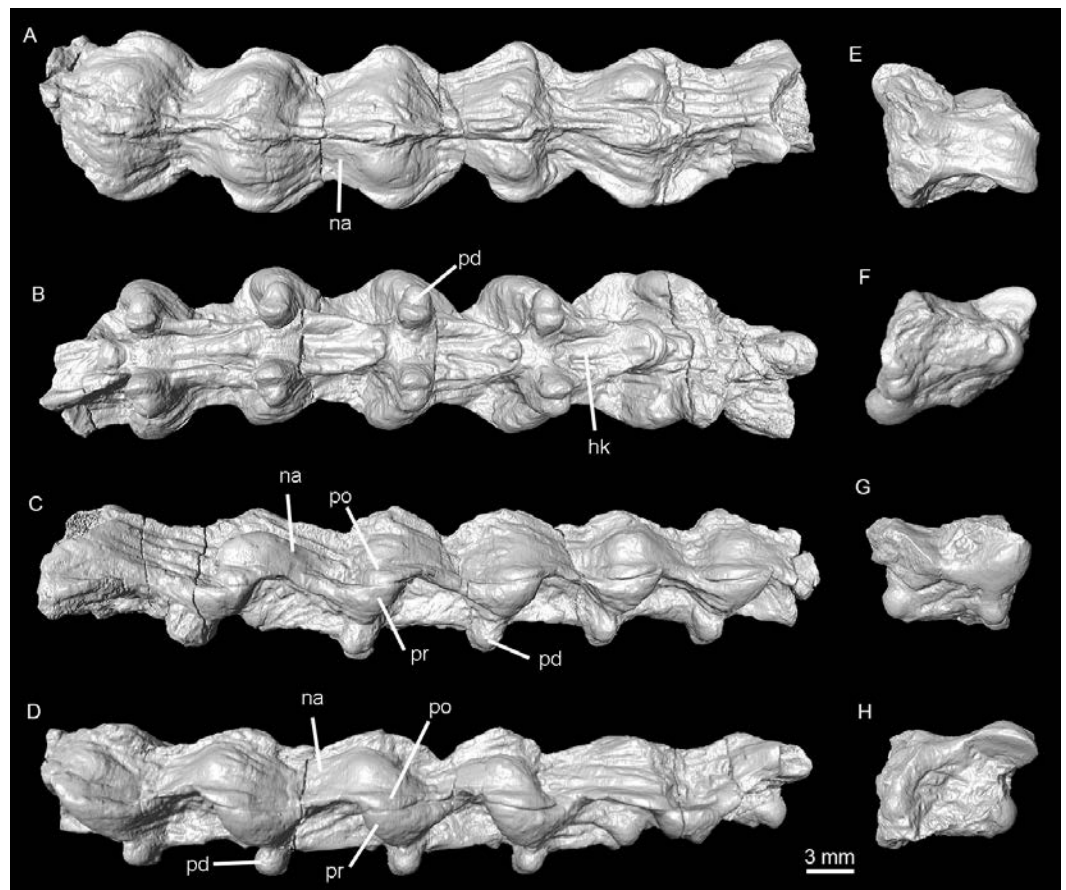
Specimen MNCN-1827-E is a poorly preserved vertebra (Figs. 5 and 9). The entire left side as well as the cotyle and zygosphenes are missing. This vertebra is also slightly deformed and has deposits of sediment. Its size is similar to that of vertebra MNCN-1827-B. It also has the same general characters except that the anteriorly low neural spine rises abruptly at the distal part of the neural arch, becoming a well-developed neural spine which is posteriorly directed in a strong angle and projects freely beyond the posterior edge of the neural arch (Figs. 9I–9L). The free portion of the spine comprises approximately 63% of the length of the neural arch and thus forms more than half the total length of the vertebra. It has a tubular form; it is thin and its anteroposterior section is short. This spine forms an acute angle with respect to the roof of the neural arch (less than 45°), therefore not increasing significantly the height of the vertebra. The vertebra does not have a hypapophysis on the ventral surface of its vertebral centrum. The most posterior part of the centrum bears a slight prominence not wider than the cotyle, similar to the posterior part of a hemal keel in specimen MNCN-1827-B. Based on the presence of a well-developed neural spine, this vertebra is interpreted as an anterior trunk vertebra (see ‘Discussion’).

Specimen MNCN-1827-F includes five tightly articulated vertebrae (Figs. 6 and 10), with the same morphology as vertebra MNCN-1827-A and without any trace of neural spines. Based on the  $\mu$ CT sections of these vertebrae, both the centrum and the neural arch are revealed to be osteosclerotic, as they are composed of thick cortical bone (Fig. 11). Fragment MNCN-1827-G does not have distinctive features (Figs. 10E–10H).

## DISCUSSION

### Variations along the vertebral column

Following the atlas and axis, the vertebral column of snakes is conventionally divided into precloacal (trunk), cloacal and caudal regions (Hoffstetter & Gasc, 1969). Cloacal and caudal vertebrae are characterized by smaller size and the presence of additional apophyses which are absent in all vertebrae of the studied sample. Nevertheless, some vertebrae of *Lunaophis* lack any trace of neural spine (MNCN-1827-A, MNCN-1827-C, MNCN-1827-F), others have a very low neural spine, present as a thin and anteroposteriorly elongate crest (MNCN-1827-B and probably MNCN-1827-D), and finally one has a well-developed neural spine projecting from the neural arch roof (MNCN-1827-E). Hence, the diverse neural spines in different vertebrae of the same individual of *Lunaophis* imply significant variation along the precloacal region of the vertebral column. In snakes, the precloacal region is subdivided into three portions, the limits of which are imprecisely defined: the anterior, middle and posterior regions (Hoffstetter & Gasc, 1969; Albino, 2011a; Albino, 2011b). The similar size of the studied vertebrae of *Lunaophis* indicates that they are not anteriormost or posteriormost precloacal vertebrae, which should be smaller (as is the case in all snakes). In addition, anteriormost precloacal vertebrae of snakes are characterized by the presence of hypapophyses on the ventral surface of the vertebral centra at least until the fourth vertebra (Hoffstetter & Gasc, 1969), whereas in all preserved vertebrae of *Lunaophis*, there is a hemal keel instead of a hypapophysis below the vertebral centrum. No other significant differences occur among the studied vertebrae of the sample, except

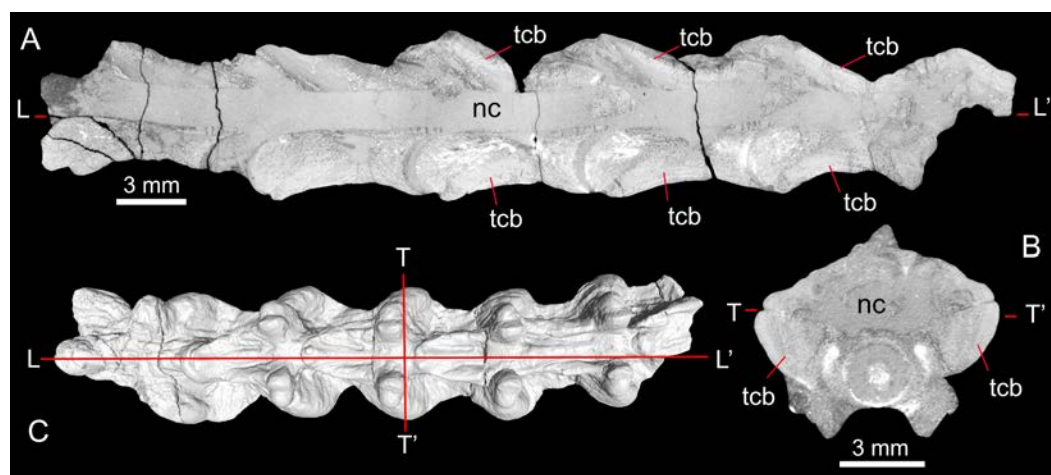


**Figure 10** Holotype of *Lunaophis aquaticus*. (A–D), MNCN-1827-F, articulated preloacal vertebrae; (E–H), MNCN-1827-G, scarcely preserved vertebral fragment. Dorsal (A, E), ventral (B, F), right lateral (C, G), and left lateral (D, H) views; hk, haemal keel; na, neural arch; ns, neural spine; pd, paradiapophysis; po, postzygapophysis; pr, prezygapophysis.

for the development of the neural spine. Taking into account that neural spines in other snakes are well-developed in the anterior preloacal region but become reduced posteriorly (Hoffstetter & Gasc, 1969; Albino, 2011a; Albino, 2011b), the vertebra with a well-developed neural spine of *Lunaophis* would be an anterior vertebra (probably near the limit with the mid-trunk region). They would be followed by vertebrae with very low neural spines (mid-trunk vertebrae) and then by posterior trunk vertebrae that lack neural spines (probably near the limit with the mid-trunk region). Thus, neural spines in *Lunaophis* would have been well-developed only along the anterior part of the vertebral column, including some vertebrae that have already lost the hypapophyses. They become drastically reduced, and finally lost, posteriorly.

### Comparative osteology

The overall morphology of the vertebrae in *Lunaophis aquaticus* gen. et sp. nov. is snake-like and has a combination of characters only present in these squamates, including



**Figure 11** Longitudinal (A) and transverse (B)  $\mu$ CT sections through specimen MNCN-1827-F showing pachyostotic, thickened cortical bone; with section positions shown in C. Abbreviations: tcb, thickened cortical bone; nc, neural canal.

well-developed subcentral ridges, zygosphenes-zygantrum accessory articulation, well-differentiated diapophyses and parapophyses in all known vertebrae and vertebral centrum with concave ventral surface (Hoffstetter & Gasc, 1969; Estes, De Queiroz & Gauthier, 1988). The strongly posteriorly inclined neural spine in specimen MNCN-1827-E is reminiscent of the condition in lizards (Estes, De Queiroz & Gauthier, 1988). The absence of prezygapophyseal processes is characteristic of lizards but is also present in some basal snakes (Hoffstetter & Gasc, 1969).

In the last few years, efforts to understand the origins and evolution of snakes have resulted in several phylogenetic analyses that include extinct species. Crown snakes are split into two major extant clades: scolecophidians, which includes blind snakes and thread snakes, and alethinophidians, which comprises all other snakes. Nevertheless, recent analyses indicate that the unambiguously terrestrial fossil snakes *Dinilysia patagonica*, *Najash rionegrina*, and *Coniophis precedens* Marsh, 1892 represent more remote hierarchical sisters to crown snakes, with *Dinilysia* representing the immediate sister to the crown (Zaher & Scanferla, 2012; Longrich, Bhullar & Gauthier, 2012; Gauthier et al., 2012). These fossil species, in combination with the revised phylogenetic position of the limbed Tethyan marine snakes (simoliophiids) as nested within alethinophidians (Gauthier et al., 2012), contradicts the marine origin hypothesis for snakes (Hsiang et al., 2015).

The vertebrae of *Lunaophis aquaticus* differ significantly from extant scolecophidians in having paradiapophyses differentiated into two surfaces (diapophysis and parapophysis), the presence of a precondylar constriction, the absence of a prezygapophyseal process, and the non-oval cotyle and condyle. The former two characters also distinguish *Lunaophis aquaticus* from the extinct *Coniophis precedens*, whereas the third character-state contrasts with the condition in *Dinilysia patagonica* which has a prezygapophyseal process. The same combination of features observed in *Lunaophis aquaticus* is present in primitive snakes



such as aff. *Parviraptor estesi* and *Najash rionegrina*, and at least the two latter features can be verified in *Seismophis septentrionalis* (Zaher, Apesteguía & Scanferla, 2009; Caldwell et al., 2015; Hsiou et al., 2014). Similar to these taxa, the posterior border of the neural arch in *Lunaophis aquaticus* is not notched, but it differs significantly in the position of the paradiapophyses below the vertebral centrum and the fact that these face ventrally. In the other species the paradiapophyses are more highly positioned and face more laterally than ventrally. Other differences with aff. *Parviraptor estesi* and *Diablophis gilmorei* are the better developed zygosphene, a deeper precondylar constriction, and a non-trifoliate neural canal. A neural spine reduced to a ridge is reminiscent of the condition in *Coniophis precedens* (but it ends in a tuberosity in that species). *Lunaophis aquaticus* also shares with *Coniophis precedens*, *Dinilysia patagonica*, and *Seismophis septentrionalis* the presence of a depressed neural arch. On either side of the neural spine, dorsal ridges are present in these snakes, as well as in *Najash rionegrina* and Madtsoiidae. *Lunaophis aquaticus* also differs from *Seismophis septentrionalis* in the concave zygosphene and the absence of parazygantral foramina. The vertebral centrum in *Lunaophis aquaticus* differs from other primitive species in not being as markedly wider anteriorly as it is in *Najash rionegrina*, *Dinilysia patagonica*, and *Seismophis septentrionalis*. Based on figures in Caldwell et al. (2015), a centrum that is not much wider anteriorly is present in aff. *Parviraptor estesi* and *Diablophis gilmorei*.

In comparison to other Cenomanian snakes, *Lunaophis aquaticus* slightly resembles simoliophiids, which represent the earliest invasion of the sea in the evolution of snakes (Hsiang et al., 2015). Simoliophiids are known from Western Europe and northwesternmost Africa to the Middle East. Among them, the better known species are *Pachyrachis problematicus* Haas, 1979, *Haasiophis terrasanctus* Tchernov et al., 2000 and *Eupodophis descouensis* Rage & Escuillié, 2000, whereas other species are *Pachyophis woodwardi* Nopcsa, 1923, *Simoliophis rochebrunei* Sauvage, 1880 and *Simoliophis libycus* Nessov, Zhegallo & Averianov, 1998 (Rage & Escuillié, 2003). Comparisons are difficult because *Lunaophis* is known to date only by few isolated vertebrae and a small fragment of five articulated vertebrae, whereas most simoliophiids consist of articulated skeletons (including skulls and hindlimbs), in which articular surfaces, apophyses and other details of the vertebral column are hidden. An absence of a prezygapophyseal process, strongly posteriorly inclined neural spine in anterior vertebrae, and concave zygosphene are features shared with simoliophiids but also lizards and some primitive snakes. All simoliophiids display pachyostosis that increases the mass of the vertebrae and ribs. Pachyostosis in simoliophiids species is pronounced, with the centrum and neural arch being swollen in all dimensions, especially in *Pachyophis* and *Simoliophis* (Lee & Caldwell, 1998; Houssaye, 2010; Rage, Vullo & Néraudeau, 2016). However, the pachyostosis in *Lunaophis* is less pronounced, and is concentrated on the prezygapophyseal bodies and on the posterior part of the neural arch, above the postzygapophyses.

The vertebrae of *Simoliophis* are the best described among simoliophiids, owing to the fact that they are poorly exposed and are not known three-dimensionally in other simoliophiid taxa. Rage & Escuillié (2003) and Rage, Vullo & Néraudeau (2016) consider the vertebrae of the marine hindlimbed snakes from the Cenomanian to be very similar to those of *Simoliophis*; more specifically, they indicate that what is known of the vertebrae of

*Pachyrhachis* and *Haasiophis* do not permit any distinction between these two snakes and *Simoliophis*. Based on the best descriptions of *Pachyrhachis problematicus* and *Simoliophis rochebrunei* (Lee & Caldwell, 1998; Rage, Vullo & Néraudeau, 2016), mid-trunk vertebrae of these species have higher neural arches than those of *Lunaophis*, and vertebral centra are short and broad instead long and narrow, as in the new genus. Despite variations in height, neural spines on all precloacal vertebrae of *Simoliophis* and *Pachyrhachis* are well-developed as a distinctive process, whereas in *Lunaophis* the neural spines are well-developed only in anterior vertebrae, but they become greatly reduced and finally disappear in mid- and posterior precloacal vertebrae. The posterodorsal border of the neural arch is straight in *Simoliophis* but convex in *Lunaophis*. The zygosphenes of *Simoliophis* are proportionally smaller, are very narrow and their roofs appear as high triangles, different from the wide and dorsally flat zygosphenes of *Lunaophis*. Other distinctive characters of *Simoliophis* differing from those found in *Lunaophis* are the higher position and stronger inclination of the prezygapophyses; the interzygapophyseal constriction is shallower; the paradiapophyses are larger, high-up, face laterally and reach the level of the prezygapophyseal extremity; and the form of the centrum which does not narrow posteriorly. Aside from these characters and according to the most complete descriptions of *Haasiophis* (Rieppel et al., 2003), the neural spines are low throughout the precloacal region of this genus but they do not disappear as in the posterior trunk vertebrae of *Lunaophis*. In addition, evident pachyostosis in midtrunk vertebrae that affects the paradiapophyses is a distinctive feature of *Haasiophis* which is not evident in *Lunaophis*. Vertebrae of *Eupodophis* look significantly higher than in *Lunaophis* and have characteristic protuberances on the neural arch on either side of the neural spine, which represents a unique character of this genus (Rage & Escuillié, 2000).

In conclusion, the vertebrae described here constitute a distinctive taxon that displays features that distinguish it from other known extinct and extant snakes. Outstanding characters of this snake are the walls of the neural arch arising from the midline of the vertebrae and diverging to the subcentral ridges, the pachyostosis on the prezygapophyses and posterior neural arch, the depressed and laterally expanded roof of the neural arch with strong development of the interzygapophyseal ridges, the extension of the arch beyond the level of the condyle and forming a convex posterior edge, the long and narrow centrum with strong lateral development of the subcentral crests, the low placed and closely spaced paradiapophyses with small articular surfaces facing ventrally and projected beyond the ventral rim of the cotyle with a short process, and the substantial changes of the neural spines along the precloacal region from well-developed as a tubular process to an absolutely lacking spine. Although some features available on vertebrae of *Lunaophis* are plesiomorphic (anterior border of zygosphenes clearly concave, articular facets of zygapophyses well inclined on horizontal, prezygapophyseal processes lacking, posterior edge of neural arch not notched, neural spine of anterior vertebrae posteriorly projected), the mentioned singular characters have not been described for any other snake and make *Lunaophis* an enigmatic new taxon from the South American Cenomanian.

*Mode of life of Lunaophis aquaticus.* Some features of the vertebrae of *Lunaophis* are indicative of an aquatic mode of life. The depressed neural arches associated with the lacking or greatly reduced neural spines is a feature shared by fossorial snakes such as

scolecophidians and anilioids, and other burrowing squamates such as amphisbaenians ([Hoffstetter & Gasc, 1969](#)). Nevertheless, the presence of this feature contrasts with the ventrally placed paradiapophyses, the medium size of the vertebrae, and the well-developed neural spine shown by vertebra MNCN-1827-E, which argues against possible fossorial habits. In particular, closely spaced paradiapophyses oriented in a ventral position with articular surfaces that face ventrally indicate that the ribs were directed below the vertebral centra and that the body of the snake was likely strongly compressed laterally as an adaptation for swimming. Elongate bodies of snakes are efficient for swimming, but all extant species of sea snakes have evolved paddle-like tails and many have laterally compressed bodies which give them an eel-like appearance and increase their locomotory ability in water. A laterally compressed body helped by well-developed muscles permits an efficient propulsion into the water. Thus, the body morphology of *Lunaophis* clearly argues for a highly aquatic mode of life. In the same sense, pachyostosis s.l., is relatively frequent in aquatic tetrapods living in shallow marine environments (e.g., [Ricqlès & Buffrénil, 2001](#)). Thus, the pachyostotic condition of studied vertebrae also supports an aquatic mode of life for *Lunaophis*.

*Paleoenvironment and paleoecology.* As discussed above, *Lunaophis aquaticus* gen. et sp. nov. represents an aquatic lineage of snakes that exploited marine environments. This is also reflected by the depositional conditions of the La Luna Formation, interpreted as a typical marine environment where laminated organic rich intervals suggest a deposition on the mid-shelf to upper continental slope under anoxic or poorly oxygenated conditions ([Macellari & De Vries, 1987](#); [Erlach et al., 1999](#); [Bralower & Lorente, 2003](#); [Zapata et al., 2003](#)). The organic matter of the sediments in the La Aguada Member (Trujillo area) is mostly of algal origin ([Tribovillard et al., 1991](#)). [González de Juana, Iturralde de Arocena & Picard \(1980\)](#) suggested that the La Aguada Member could be considered as a transitional environment between the shallow waters of the Maraca formation (or La Puya Member according to [Renz, 1959](#); [Renz, 1968](#)) and the pelagic facies of the La Luna Formation. In contrast with the pelagic and hemipelagic deep water sedimentation suggested by [Tribovillard et al. \(1991\)](#), [Erlach et al. \(1999\)](#) and [Méndez \(1981\)](#) suggested that the anoxic conditions of the La Luna Formation during the late Albian-early Cenomanian transgression were not due to water depth but pre-existing anoxic conditions in the slope zone. On basis of benthic and planktonic foraminiferans, [Méndez \(1981\)](#), and references therein) recognized an increase in the submersion of the platform, but probably with depths that did not exceed 50 m.

The holotype of *Lunaophis aquaticus* gen. et sp. nov. is associated with other marine vertebrates (sharks and bony fishes) in the Aguada Member (Cementos Andinos quarry). Bony fish remains are very abundant in the horizon yielding *Lunaophis aquaticus* and adjacent strata ([Fig. 2](#)). These remains include isolated and semi-articulated cranial and postcranial elements of *Xiphactinus audax* ([Leidy, 1870](#); [Carrillo-Briceño, Alvarado-Ortega & Torres, 2012](#)), ichthyodectiforms, enchodontids and small indeterminate fishes. The chondrichthyans are represented mainly by isolated teeth of at least three species of lamniform sharks although a semi-complete, articulated vertebral column of a lamniform species has also been recovered (all these specimens are currently under study). Benthic

invertebrates are scarce in the shales of the Cementos Andinos quarry; however, small indeterminate bivalve molds are common in the limestones. The benthic invertebrate fauna in the La Aguada Member could represent brief periods of better oxygenated conditions on the sea floor or organisms that were tolerant to anoxic environments, as has been suggested for other sections of the La Luna Formation (e.g., [Tribovillard et al., 1991](#)). Although anoxic-dysoxic conditions prevailed on the seafloor of the basin ([Méndez, 1981](#); [Macellari & De Vries, 1987](#); [Tribovillard et al., 1991](#); [Erlich et al., 1999](#)), the presence of ammonites ([Renz, 1959](#); [Renz, 1982](#)), reptiles (*Lunaophis aquaticus*), and abundant fishes provides evidence of well-oxygenated surface waters, indicating that the Aguada Member environment was characterized by a stratified water column. In addition, other chondrichthyans, bony fishes and marine reptile have also been found throughout the La Luna Formation ([Weiler, 1940](#); [Moody & Maisey, 1994](#); [Casas & Moody, 1997](#); [Sánchez-Villagra, Brinkmann & Lozán, 2008](#); [Carrillo-Briceño, 2009](#); [Carrillo-Briceño, 2012](#)).

## CONCLUSION

*Lunaophis aquaticus* gen. et sp. nov. is the oldest known snake from northern South America. It is of Cenomanian age, with relevant primitive features that distinguish it from other fossil and extant taxa by a number of characters that make it a new and enigmatic taxon, without evident affinities with any particular snake group. The nature of the fossils does not permit phylogenetic analysis until skull bones are available. The anatomical features of *Lunaophis aquaticus* with a laterally compressed body, the pachyostosis of the vertebrae, the depositional conditions of the La Luna Formation and the associated fauna clearly support a tropical marine paleoenvironment where this snake would have displayed an aquatic mode of life. In the context of the phylogeny proposed by [Hsiang et al. \(2015\)](#), *Lunaophis aquaticus* represents the oldest snake to have adopted an aquatic mode of life outside of the African and European Tethyan and Boreal Zones.

## ACKNOWLEDGEMENTS

The authors wish to especially thank Lilia Vierma (†), Carlos Torres and Cemento Andino Ca., for their valuable assistance in the field; to Alfredo Carlini for his substantial assistance in making this collaborative work possible; to Marcelo Sánchez Villagra, Torsten M. Scheyer, Christian Kolb and members of the Evolutionary Morphology and Palaeobiology group at the Palaeontological Institute and Museum, University of Zurich, Switzerland, for generous and significant counseling and collaboration; Alexandra Wegmann for conducting the scanning; and to the Instituto del Patrimonio Cultural de Venezuela for the authorization and collecting permission. The Academic Editor Hans-Dieter Sues, and the reviewers Alexandra Houssaye and Michael Caldwell, are thanked for providing helpful comments that improved the manuscript.



## ADDITIONAL INFORMATION AND DECLARATIONS

### Funding

This project was supported by the PIP-CONICET No 112-200901-00176 (AA), and Swiss National Science Foundation grants 31003A-149605 (awarded to James M. Neenan) and P2ZHP3\_162102 (JMN). The funders had no role in study design, data collection and analysis, decision to publish, or preparation of the manuscript.

### Grant Disclosures

The following grant information was disclosed by the authors:

PIP-CONICET: 112-200901-00176.

Swiss National Science Foundation: 31003A-149605, P2ZHP3\_162102.

### Competing Interests

The authors declare there are no competing interests.

### Author Contributions

- Adriana Albino and James M. Neenan conceived and designed the experiments, performed the experiments, analyzed the data, contributed reagents/materials/analysis tools, wrote the paper, prepared figures and/or tables, reviewed drafts of the paper.
- Jorge D. Carrillo-Briceño conceived and designed the experiments, performed the experiments, analyzed the data, contributed reagents/materials/analysis tools, wrote the paper, prepared figures and/or tables, reviewed drafts of the paper, field collection and preparation process of the fossil specimens.

### Data Availability

The following information was supplied regarding data availability:

All illustrations and 3D models deposited at Morphobank: doi: [10.18563/m3.2.2.e2](https://doi.org/10.18563/m3.2.2.e2).

### New Species Registration

The following information was supplied regarding the registration of a newly described species:

*Lunaophis* gen. nov. LSID: <http://zoobank.org/NomenclaturalActs/D269D7FA-1B3A-431B-85AF-B081E1434049>;

*Lunaophis aquaticus* sp. nov. LSID: <http://zoobank.org/NomenclaturalActs/175D3D55-D85A-4013-8D30-563BAB7A4143>;

Publication LSID: urn:lsid:zoobank.org:pub:918B6879-8908-488F-876B-EA741DFF627B.

## REFERENCES

- Albino AM. 1986.** Nuevos Boidae Madtsoiinae en el Cretácico tardío de Patagonia (Formación Los Alamitos, Río Negro, Argentina). *Actas of the 4th Congreso Argentino de Paleontología y Bioestratigrafía* 2:15–21.

- Albino AM. 1994.** Una nueva serpiente (Reptilia) del Cretácico tardío de Patagonia, Argentina. *Pesquisas* **21**:58–63.
- Albino AM. 2000.** New record of snakes from the Cretaceous of Patagonia (Argentina). *Geodiversitas* **22**:247–253.
- Albino AM. 2007.** Lepidosauria. In: Gasparini Z, Salgado L, Coria R A, eds. *Patagonian mesozoic reptiles*. Indiana: Indiana University Press, 87–115.
- Albino AM. 2011a.** Evolution of Squamata reptiles in Patagonia based on the fossil record. *Biological Journal of the Linnean Society* **103**:441–457  
[DOI 10.1111/j.1095-8312.2011.01691.x](https://doi.org/10.1111/j.1095-8312.2011.01691.x).
- Albino AM. 2011b.** Morfología vertebral de *Boa constrictor* (Serpentes: Boidae) y la validez del género mioceno *Pseudoepicrates* Auffenberg, 1963. *Ameghiniana* **48**:53–62 [DOI 10.5710/AMGH.v48i1\(302\)](https://doi.org/10.5710/AMGH.v48i1(302)).
- Apesteguía S, Zaher H. 2006.** A Cretaceous terrestrial snake with robust hindlimbs and a sacrum. *Nature* **440**:1037–1040 [DOI 10.1038/nature04413](https://doi.org/10.1038/nature04413).
- Bralower TJ, Lorente MA. 2003.** Paleogeography and stratigraphy of the La Luna Formation and related Cretaceous anoxic depositional systems. *Palaios* **18**:301–304  
[DOI 10.1669/0883-1351\(2003\)018<0301:PASOTL>2.0.CO;2](https://doi.org/10.1669/0883-1351(2003)018<0301:PASOTL>2.0.CO;2).
- Caldwell MW, Albino AM. 2002.** Exceptionally preserved skeletons of the Cretaceous snake *Dinilysia patagonica* Woodward, 1901. *Journal of Vertebrate Paleontology* **22**:861–866 [DOI 10.1671/0272-4634\(2002\)022\[0861:EPSOTC\]2.0.CO;2](https://doi.org/10.1671/0272-4634(2002)022[0861:EPSOTC]2.0.CO;2).
- Caldwell MW, Calvo J. 2008.** Details of a new skull and articulated cervical column of *Dinilysia patagonica* Woodward, 1901. *Journal of Vertebrate Paleontology* **28**:349–362  
[DOI 10.1671/0272-4634\(2008\)28\[349:DOANSA\]2.0.CO;2](https://doi.org/10.1671/0272-4634(2008)28[349:DOANSA]2.0.CO;2).
- Caldwell MW, Nydam RL, Palci A, Apesteguía S. 2015.** The oldest known snakes from the Middle Jurassic-Lower Cretaceous provide insights on snake evolution. *Nature Communications* **6**:5996 [DOI 10.1038/ncomms6996](https://doi.org/10.1038/ncomms6996).
- Carrillo-Briceño JD. 2009.** Presencia del genero *Ptychodus* (Elasmobranchii: Ptychodontidae) en el Cretácico superior de los Andes de Trujillo Venezuela. *Geomina* **37**(50):207–210.
- Carrillo-Briceño JD. 2012.** Presencia de *Ptychodus mortoni* (Elasmobranchii: Ptychodontidae) en el Cretácico Superior de Venezuela. *Revista Geológica de América Central* **46**:145–150 [DOI 10.15517/rgac.v0i46.1837](https://doi.org/10.15517/rgac.v0i46.1837).
- Carrillo-Briceño JD, Alvarado-Ortega J, Torres C. 2012.** Primer registro de *Xiphactinus* Leidy 1870, (Teleostei: Ichthyodectiformes) en el Cretácico Superior de América del Sur (Formación La Luna, Venezuela). *Revista Brasileira de Paleontología* **15**(3):327–335 [DOI 10.4072/rbp.2012.3.08](https://doi.org/10.4072/rbp.2012.3.08).
- Casas JE, Moody JM. 1997.** Primera descripción del género *Belenostomus* en la Formación La Luna (Cretácico), Sierra de Perijá, (Pisces: Aspydorhynchidae). *Boletín de la Sociedad Venezolana de Geólogos* **22**(1):51–55.
- Cuny G, Jaeger JJ, Mahboubi M, Rage JC. 1990.** Les plus anciens Serpents (Reptilia, Squamata) connus. *Mise au point sur l'âge géologique des Serpentes de la partie moyenne du Crétacé*. *Comptes rendus des séances de l'Académie des Sciences, Paris, Série II* **311**:1267–1272.

- Davis C, Pratt I, Sliter W. 1999.** Factors influencing organic carbon and trace metal accumulation in the Upper Cretaceous La Luna Formation of the western Maracaibo Basin, Venezuela. In: Barrera E, Johnson CC, eds. *Evolution of the Cretaceous Ocean-Climate System*, 203–231. Boulder: Geological Society of America Special Paper, 332.
- De Romero LM, Galea FA. 1995.** Campanian Bolivinoïdes and microfacies from the La Luna Formation, western Venezuela. *Marine Micropaleontology* **26**:385–404 DOI [10.1016/0377-8398\(96\)87759-0](https://doi.org/10.1016/0377-8398(96)87759-0).
- Erlich RN, Macsotay O, Nederbragt AJ, Lorente MA. 1999.** Palaeoceanography, palaeoecology, and depositional environments of Upper Cretaceous rocks of western Venezuela. *Palaeogeography, Palaeoclimatology, Palaeoecology* **153**:203–238 DOI [10.1016/S0031-0182\(99\)00072-3](https://doi.org/10.1016/S0031-0182(99)00072-3).
- Erlich RN, Macsotay O, Nederbragt AJ, Lorente MA. 2000.** Birth and death of the Late Cretaceous “La Luna Sea”, and origin of the Tres Esquinas phosphorites. *Journal of South American Earth Sciences* **13**:21–45 DOI [10.1016/S0895-9811\(00\)00016-X](https://doi.org/10.1016/S0895-9811(00)00016-X).
- Estes R, De Queiroz K, Gauthier J. 1988.** Phylogenetic relationships within Squamata. In: Estes R, Pregil GK, eds. *Phylogenetic relationships of the lizard families*. Stanford: Stanford University Press, 119–281.
- Estes R, Frazzetta TH, Williams EE. 1970.** Studies on the fossil snake *Dinilysia patagonica* Woodward: Part 1. Cranial morphology. *Bulletin of the Museum of Comparative Zoology* **140**:25–74.
- Gardner JD, Cifelli RL. 1999.** A primitive snake from the Cretaceous of Utah. *Special Papers in Palaeontology* **60**:87–100.
- Garner AH. 1926.** Suggested nomenclatural and correlation on geological formations in Venezuela. In: *Transactions of the American Institute of Mining and Metallurgy Engineers*, 677–684.
- Gauthier JA, Kearney M, Maisano JA, Rieppel O, Behlke ADB. 2012.** Assembling the squamate tree of life: perspectives from the phenotype and the fossil record. *Bulletin of the Peabody Museum of Natural History* **53**:3–308 DOI [10.3374/014.053.0101](https://doi.org/10.3374/014.053.0101).
- Gómez RO, Báez AM, Rougier GW. 2008.** An anilioid snake from the Upper Cretaceous of northern Patagonia. *Cretaceous Research* **29**:481–488 DOI [10.1016/j.cretres.2008.01.002](https://doi.org/10.1016/j.cretres.2008.01.002).
- González de Juana C, Iturralde de Arocena J, Picard X. 1980.** *Geología de Venezuela y de sus Cuencas Petrolíferas*. Caracas: Ed. Foninves, 1–1031.
- Haas G. 1979.** On a new snakelike reptile from the Lower Cenomanian of Ein Jabrud, near Jerusalem. *Bulletin du Muséum national d'Histoire naturelle, Ser. 4* **1**:51–64.
- Hecht M. 1982.** The vertebral morphology of the Cretaceous snake *Dinilysia patagonica* Woodward. *Neues Jahrbuch für Geologie und Paläontologie, Monatshefte* **1982**:523–532.
- Hedberg H, Sass L. 1937.** Synopsis of the geologic formations of the western part of the Maracaibo Basin, Venezuela. *Boletín de Geología y Minería* **2-4**:71–112.
- Hoffstetter R, Gasc JP. 1969.** Vertebrae and ribs of modern reptiles. In: Gans C, Parsons T S, Bellairs A d'A, eds. *Biology of the Reptilia*. vol. 1. New York: Academic Press, 201–310.

- Houssaye A. 2010.** Rediscovery and description of the second specimen of the hind-limbed snake *Pachyophis woodwardi* Nopcsa 1923 (Squamata, Ophidia) from the Cenomanian of Bosnia Herzegovina. *Journal of Vertebrate Paleontology* **30**:276–279 DOI [10.1080/02724630903416043](https://doi.org/10.1080/02724630903416043).
- Hsiang AY, Field DJ, Webster TH, Behlke ADB, Davis MB, Racicot RA, Gauthier JA. 2015.** The origin of snakes: revealing the ecology, behavior, and evolutionary history of early snakes using genomics, phenomics, and the fossil record. *BMC Evolutionary Biology* **15**:87 DOI [10.1186/s12862-015-0358-5](https://doi.org/10.1186/s12862-015-0358-5).
- Hsiou AS, Albino AM, Medeiros MA, Santos RAB. 2014.** The oldest Brazilian snakes from the early Late Cretaceous (Cenomanian). *Acta Palaeontologica Polonica* **59**:635–642 DOI [10.4202/app.2012.0091](https://doi.org/10.4202/app.2012.0091).
- Lee MSY, Caldwell MW. 1998.** Anatomy and relationships of *Pachyrhachis problematicus*, a primitive snake with hindlimbs. *Philosophical Transactions of the Royal Society of London, B* **353**:1521–1552 DOI [10.1098/rstb.1998.0308](https://doi.org/10.1098/rstb.1998.0308).
- Leidy J. 1870.** Remarks on ichthyodorulites and on certain fossil mammalians. *Proceedings of the American Philosophical Society* **22**:12–13.
- Linnaeus C. 1758.** Systema naturae. In: *Editio Decima*. Stockholm: Larentii Salvii, 824 p.
- Longrich NR, Bhullar B-AS, Gauthier JA. 2012.** A transitional snake from the late Cretaceous period of North America. *Nature* **488**:205–208 DOI [10.1038/nature11227](https://doi.org/10.1038/nature11227).
- Macellari CE, De Vries TJ. 1987.** Late Cretaceous upwelling and anoxic sedimentation in northwestern South America. *Palaeogeography, Palaeoclimatology, Palaeoecology* **59**:279–292 DOI [10.1016/0031-0182\(87\)90086-1](https://doi.org/10.1016/0031-0182(87)90086-1).
- Marsh OC. 1892.** Notice of new reptiles from the Laramie Formation. *American Journal of Science* **43**:449–453.
- Martill DM, Tischlinger H, Longrich NR. 2015.** A four-legged snake from the Early Cretaceous of Gondwana. *Science* **349**:416–419 DOI [10.1126/science.aaa9208](https://doi.org/10.1126/science.aaa9208).
- Martinelli AG, Forasiepi AM. 2004.** Late Cretaceous vertebrates from Bajo de Santa Rosa (Allen Formation), Río Negro province, Argentina, with the description of a new sauropod dinosaur (Titanosauridae). *Revista del Museo Argentino de Ciencias Naturales Bernardino Rivadavia* **6**:257–305.
- Méndez BJ. 1981.** La Formación La Luna. Característica de una cuenca anóxica en una plataforma de aguas someras. In: *Proceedings of the 7th Congreso Geológico Venezolano*, 862–866.
- Moody JM, Maisey JG. 1994.** New Cretaceous marine vertebrate assemblages from north-western Venezuela and their significance. *Journal of Vertebrate Paleontology* **14**(1):1–8 DOI [10.1080/02724634.1994.10011534](https://doi.org/10.1080/02724634.1994.10011534).
- Nessov LA, Zhegallo VI, Averianov AO. 1998.** A new locality of Late Cretaceous snakes, mammals and other vertebrates in Africa (western Libya). *Annales de Paléontologie* **84**:265–274 DOI [10.1016/S0753-3969\(99\)80002-0](https://doi.org/10.1016/S0753-3969(99)80002-0).
- Nopcsa F. 1923.** *Eidolosaurus* und *Pachyophis*. Zwei neue Neocom-Reptilien. *Palaeontographica* **65**:97–154.
- Oppel M. 1811.** *Die Ordnungen, Familien und Gattungen der Reptilien als Prodrom einer Naturgeschichte derselben*. München: Joseph Lindauer, 1–86.



- Palci A, Caldwell MW, Albino AM. 2013.** Emended diagnosis and phylogenetic relationships of the Upper Cretaceous fossil snake *Najash rionegrina* Apesteguia & Zaher, 2006. *Journal of Vertebrate Paleontology* **33**:131–140 DOI [10.1080/02724634.2012.713415](https://doi.org/10.1080/02724634.2012.713415).
- Rage J-C, Albino AM. 1989.** *Dinilysia patagonica* (Reptilia, Serpentes); matériel vertébral additionnel du Crétacé supérieur d'Argentine. Étude complémentaire des vertébrés, variations intraspécifiques et intracolumnaires. *Neues Jahrbuch für Geologie und Paläontologie, Monatshefte* **1989**:433–447.
- Rage J-C, Escuillié F. 2000.** Un nouveau serpent bipède du Cénomani (Crétacé). Implications phylétiques. *Comptes rendu de l'Académie des Science Paris, Sciences de la Terre et des planètes* **330**:513–520.
- Rage J-C, Escuillié F. 2003.** The Cenomanian: stage of hindlimbed snakes. *Carnets de Géologie* **2002**:1–11 DOI [10.4267/2042/293](https://doi.org/10.4267/2042/293).
- Rage J-C, Richter A. 1994.** A snake from the Lower Cretaceous (Barremian) of Spain: the oldest known snake. *Neues Jahrbuch für Geologie und Paläontologie, Monatshefte* **9**:561–565.
- Rage J-C, Vullo R, Néraudeau D. 2016.** The mid-Cretaceous snake *Simoliophis rochebrunei* (Sauvage, 1880) (Squamata: Ophidia) from its type area (Charentes, southwestern France): redescription, distribution, and palaeoecology. *Cretaceous Research* **58**:234–253 DOI [10.1016/j.cretres.2015.10.010](https://doi.org/10.1016/j.cretres.2015.10.010).
- Renz O. 1959.** Estratigrafía del Cretáceo en Venezuela occidental. *Boletín de Geología* **5**:3–48.
- Renz O. 1968.** Über die Untergattungen *Venezoliceras* Spath und *Laraiceras* n. subgen, der Gattung *Oxytropidoceras* Stieler (Ammonoidea) aus den venezolanischen Anden. *Eclogae Geologicae Helvetiae* **61**:615–655.
- Renz O. 1982.** *The Cretaceous ammonites of Venezuela*. Caracas: Maraven, 1–132.
- Ricqlès A de, Buffrénil V de. 2001.** Bone histology, heterochronies and the return of tetrapods to life in water: where are we? In: Mazin JM, Buffrénil V de, eds. *Secondary adaptation of tetrapods to life in water*. München: Verlag Dr. Friedrich Pfeil, 289–310.
- Rieppel O, Zaher H, Tchernov E, Polcyn MJ. 2003.** The anatomy and relationships of *Haasiophis terrasanctus*, a fossil snake with well-developed hind limbs from the mid-Cretaceous of the Middle East. *Journal of Paleontology* **77**:536–558 DOI [10.1666/0022-3360\(2003\)077<0536:TAAROH>2.0.CO;2](https://doi.org/10.1666/0022-3360(2003)077<0536:TAAROH>2.0.CO;2).
- Sánchez-Villagra MR, Brinkmann W, Lozán R. 2008.** The Palaeozoic and Mesozoic vertebrate record of Venezuelan overview, summary of previous discoveries and report of a mosasaur from the La Luna Formation (Cretaceous). *Paläontologische Zeitschrift* **82**:113–124 DOI [10.1007/BF02988403](https://doi.org/10.1007/BF02988403).
- Sauvage H E. 1880.** Sur l'existence d'un reptile du type ophidien dans les couches à *Ostrea columba* des Charentes. *Comptes Rendus Hebdomadaires des Sciences de l'Académie des Sciences* **91**:671–672.

- Smith-Woodward A. 1901.** On some extinct reptiles from Patagonia of the genera *Miolania*, *Dinilysia*, and *Genyodectes*. *Proceedings of the Zoological Society of London* **1901**:169–184.
- Tchernov E, Rieppel O, Zaher H, Polcyn MJ, Jacobs LJ. 2000.** A new fossil snake with limbs. *Science* **287**:2010–2012 DOI [10.1126/science.287.5460.2010](https://doi.org/10.1126/science.287.5460.2010).
- Tribovillard NP, Stephan JF, Manivit H, Reyre Y, Cotillon P, Jautee E. 1991.** Cretaceous black shales of Venezuelan Andes: preliminary results on stratigraphy and paleo-environmental interpretations. *Palaeogeography, Palaeoclimatology, Palaeoecology* **81**:313–321 DOI [10.1016/0031-0182\(91\)90152-H](https://doi.org/10.1016/0031-0182(91)90152-H).
- Weiler W. 1940.** Fischreste aus der Umgebung von San Cristobal, SW. Venezuela. *Zentralblatt für Mineralogie, Geologie und Paläontologie (B)* **1949**:240–255.
- Zaher H, Apesteguía S, Scanferla CA. 2009.** The anatomy of the upper Cretaceous snake *Najash rionegrina* (Apesteguía & Zaher, 2006), and the evolution of limblessness in snakes. *Zoological Journal of the Linnean Society* **156**:801–826 DOI [10.1111/j.1096-3642.2009.00511.x](https://doi.org/10.1111/j.1096-3642.2009.00511.x).
- Zaher H, Scanferla CA. 2012.** The skull of the Upper Cretaceous snake *Dinilysia patagonica* Smith & Woodward, 1901, and its phylogenetic position revisited. *Zoological Journal of the Linnean Society* **164**:194–238 DOI [10.1111/j.1096-3642.2011.00755.x](https://doi.org/10.1111/j.1096-3642.2011.00755.x).
- Zapata E, Padro V, Madrid I, Kertznus V, Truskowski I, Lorente MA. 2003.** Biostratigraphic, sedimentologic, and chemostratigraphic study of the La Luna Formation (Late Turonian-Campanian) in the San Miguel and Las Hernández sections, western Venezuela. *Palaios* **18**:367–377 DOI [10.1669/0883-1351\(2003\)018<0367:BSACSO>2.0.CO;2](https://doi.org/10.1669/0883-1351(2003)018<0367:BSACSO>2.0.CO;2).
- Zumberge JE. 1984.** Source rocks of the La Luna Formation (Upper Cretaceous) in the Middle Magdalena Valley, Colombia. *Petroleum Geochemistry and Source Rock Potential of Carbonate Rocks, AAPG Studies in Geology* **18**:127–133.