

Molecular gas and star formation towards the IR dust bubble S 24 and its environs

C. E. Cappa^{1,2}, N. Duronea¹, V. Firpo³, J. Vasquez^{1,2}, C. H. López-Caraballo³, M. Rubio⁴ and M. M. Vazzano²

¹ Instituto Argentino de Radioastronomía, CONICET, CCT La PLata, C.C.5, 1894, Villa Elisa, Argentina
e-mail: ccappa@fcaglp.unlp.edu.ar

² Facultad de Ciencias Astronómicas y Geofísicas, Universidad Nacional de la Plata, Paseo del Bosque s/n, 1900, La Plata, Argentina

³ Departamento de Física y Astronomía, Universidad de La Serena, La Serena, Chile

⁴ Departamento de Astronomía, Universidad de Chile, Chile

Received, 2013; accepted

ABSTRACT

Aims. We present a multi-wavelength analysis of the infrared dust bubble S 24, and the extended IR sources G341.220-0.213 and G341.217-0.237 located in its environs, with the aim of investigating the characteristics of the molecular gas and the interstellar dust linked to them, and analyzing the evolutionary state of the young stellar objects identified there and its relation to S 24 and the IR sources.

Methods. Using the APEX telescope, we mapped the molecular emission in the CO(2-1), ¹³CO(2-1), C¹⁸O(2-1), and ¹³CO(3-2) lines in a region of about 5' × 5' in size around the bubble. The cold dust distribution was analyzed using submillimeter continuum images from ATLASGAL and Herschel. Complementary IR and radio data at different wavelengths were used to complete the study of the interstellar medium in the region.

Results. The molecular gas distribution shows that gas linked to the S 24 bubble, G341.220-0.213, and G341.217-0.237 has velocities between -48.0 km s⁻¹ and -40.0 km s⁻¹, compatible with a kinematical distance of 3.7 kpc generally adopted for the region. The gas distribution reveals a shell-like molecular structure of ~0.8 pc in radius bordering the S 24 bubble. A cold dust counterpart of the shell is detected in the LABOCA and Herschel-SPIRE images. The presence of weak extended emission at 24 μm from warm dust and radio continuum emission projected inside the bubble indicates the existence of exciting sources and that the bubble is a compact HII region. Part of the molecular gas bordering the S 24 HII region coincides with the extended infrared dust cloud SDC341.194-0.221. A molecular and cold dust clump is present at the interface between the S 24 HII region and G341.217-0.237, shapping the eastern border of the IR bubble. As regards G341.220-0.213, the presence of an arc-like molecular structure encircling the northern and eastern sections of this IR source indicates that G341.220-0.213 is interacting with the molecular gas. The analysis of the available IR point source catalogs reveals the existence of young stellar objects (YSO) candidates linked to the IR extended sources, thus confirming its nature as active star-forming regions. Gas and dust masses were estimated for the different features. The total gas mass in the region and the H₂ ambient density amount to 10300 M_⊙ and 5900 cm⁻³, indicating that G341.220-0.213, G341.217-0.237, and the S 24 HII region are evolving in a high density medium. A triggering star formation scenario for the HII region is investigated.

Key words. ISM:molecules – stars:protostars – (ISM:)IR dust bubbles – ISM:individual objects: S 24 – ISM:individual objects:IRAS 16487-4423

1. Introduction

Churchwell et al. (2006, 2007) identified more than 600 infrared (IR) dust bubbles in the Spitzer 8.0 μm-images of the Galactic Legacy Infrared Mid-Plane Survey Extraordinaire (GLIMPSE, Benjamin et al. 2003) between longitudes from -60° to +60°. These infrared (IR) dust bubbles are bright at 8.0 μm, showing the emission of polycyclic aromatic hydrocarbons (PAHs) typical of photodissociation regions (PDRs), and enclose 24 μm emission, indicating the existence of warm dust inside (Watson et al. 2008). These characteristics indicate the presence of excitation sources (O- and/or B-type stars) that dissociate the molecular gas in the border of the PDRs and heat the dust through their UV photons. The dense shells surrounding many IR dust bubbles favour the formation of new generations of stars through the Radiatively Driven Implosion (RDI) or the *collect and collapse* (CC) processes. Indeed, detailed studies of these bubbles have shown the presence of young stellar objects in their environs, although in some cases triggered star formation could not be proved (see for example Alexander et al. 2013; Dewangan & Ojha 2013).

We selected the complex of IR dust bubbles S 21-S 24 identified by Churchwell et al. (2006) in the GLIMPSE images to perform a multiwavelength study of the interaction with their environs and search for young stellar objects in their vicinity. Here we report on the study of S 24. This bubble is centered at RA,Dec.(J2000) = (16^h52^m20^s, -44°28'10'') or (l,b) = (341°203, -0°23) and coincides with the IR source IRAS 16487-4423, which have colors typical of ultracompact HII regions (Wood & Churchwell 1989).

A composite image of S 24 and its environs at 3.6, 4.5, and 8.0 μm is displayed in Fig. 1. At 3.6 μm, the emission arises in a faint PAH feature at 3.3 μm and in dispersed stellar light, while at 8.0 μm most of the emission originates in strong features from PAHs. The 4.5 μm band shows emission from Brα and Pfβ, and vibrational H₂ lines and ro-vibrational CO lines, typical from shocked gas. At 8 μm, the bubble presents a full filamentary shell of about 28'' in radius, brighter towards the north and east and displays a sharp eastern border. Two small and bright regions of extended emission can be identified at 8 μm in the image, named G341.220-0.213 at RA,Dec.(J2000) = (16^h52^m18.25^s,

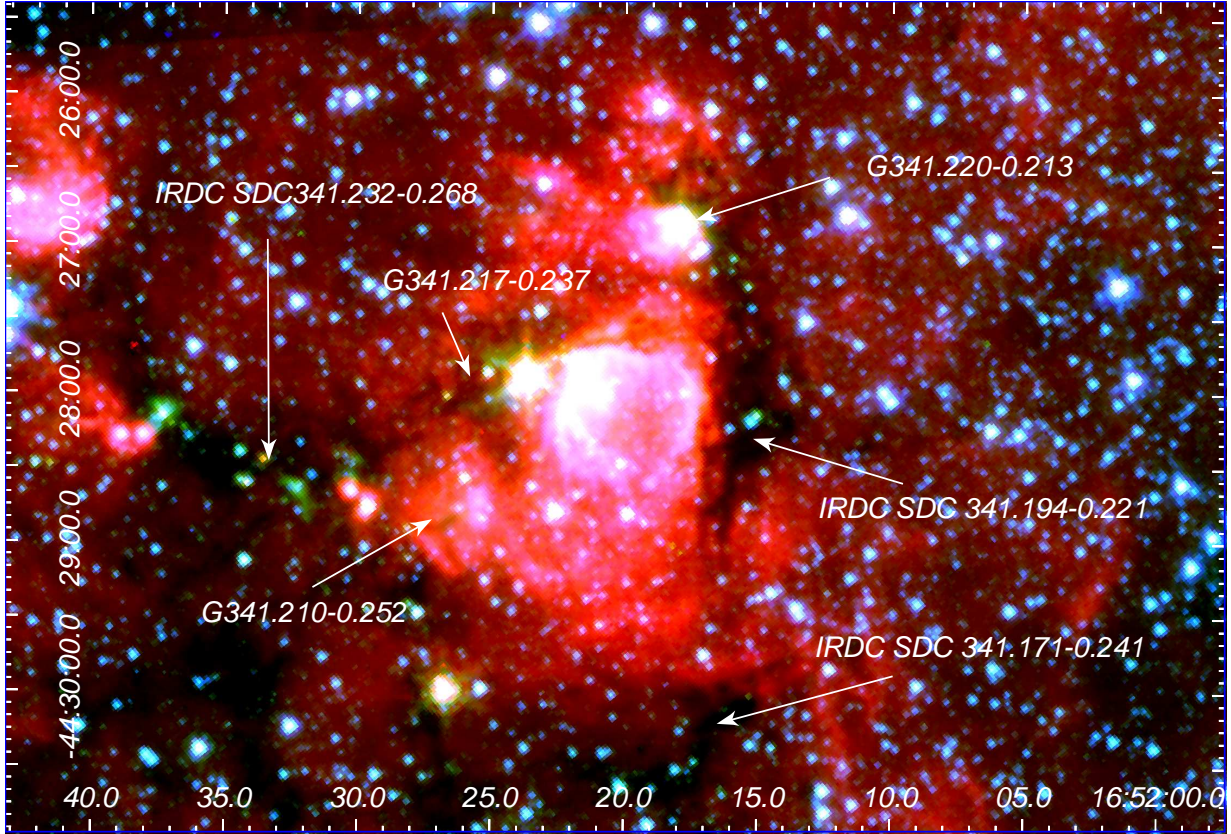


Fig. 1. Composite image of the IR dust bubble S 24 and its environs showing IRAC images: $3.6 \mu\text{m}$ is in blue, $4.5 \mu\text{m}$ is in green, and $8.0 \mu\text{m}$ is in red. The different features in the environment of S 24 are indicated. The S 24 bubble is the bright shell in the center of the image.

$-44^{\circ}26'54''$), of about $10''$ in radius, and G341.217-0.237 at RA,Dec.(J2000) = ($16^{\text{h}}52^{\text{m}}23.74^{\text{s}}$, $-44^{\circ}27'53''$), of about $5''$ in radius, placed to the north and east of S 24, respectively. At this wavelength, the shape of G341.220-0.213 resembles a horseshoe opened toward the east. The presence of an infrared dark cloud (IRDC) identified by Peretto & Fuller (2009) as SDC341.194-0.221, is evident to the west of the bubble where the emission at $8 \mu\text{m}$ is lacking. It is centered at RA,Dec.(J2000) = ($16^{\text{h}}52^{\text{m}}15.5^{\text{s}}$, $-44^{\circ}28'19.4''$) and extends almost $2'$ in declination. Two IRDCs were also identified by Peretto & Fuller (2009): one at RA,Dec.(J2000) = ($16^{\text{h}}52^{\text{m}}15.4^{\text{s}}$, $-44^{\circ}30'6.9''$) (SDC 341.171-0.241), to the south of the bubble, and the other one at RA,Dec.(J2000) = ($16^{\text{h}}52^{\text{m}}35.7^{\text{s}}$, $-44^{\circ}28'21.8''$) (IRDC SDC 341.232-0.268). Finally, fainter emission can be detected in the whole region, encircling S 24, G341.22-0.213, and G341.217-0.237. An almost circular structure of about $16''$ in radius, named from hereon G341.210-0.252, is also detected in the $8 \mu\text{m}$ image at RA,Dec.(J2000) = ($16^{\text{h}}52^{\text{m}}26.5^{\text{s}}$, $-44^{\circ}28'50''$), to the south-east of S 24. The above mentioned features are indicated in Fig. 1. The figure also shows that G341.220-0.213, G341.217-0.237, and part of the S 24 bubble coincide with sources at $4.5 \mu\text{m}$.

Henning et al. (2001) observed the region at 1.2 mm using the SEST telescope with an angular resolution of $23''$. They detected cold dust emission from G341.220-0.213 and G341.217-0.237, and an extending halo linked to S 24, and estimated that the total mass in the region amounts to almost $5000 M_{\odot}$ (adopting a gas-to-dust ratio of 100 and a distance of 3.7 kpc).

Previous studies toward the region of S 24 have shown that star formation is active. Two spots of maser emission were

detected. The first spot is a methanol and water maser emitter (Bayandina et al. 2012; Urquhart et al. 2013; Walsh et al. 2014) with peak velocities between $\sim -50 \text{ km s}^{-1}$ and -38 km s^{-1} (Pestalozzi et al. 2005; Caswell et al. 2010; Voronkov et al. 2014; Walsh et al. 2014), coincident with G341.220-0.213. The second spot is also a methanol maser emitter (Vassilev et al. 2008; Bayandina et al. 2012) with peak velocities between $\sim -70 \text{ km s}^{-1}$ and -16 km s^{-1} (Larionov & Val'tts 2008; Voronkov et al. 2014) located at RA,Dec.(J2000) \approx ($16^{\text{h}}52^{\text{m}}15^{\text{s}}.9$, $-44^{\circ}28'36''.7$), coincident with the IRDC SDC341.194-0.221. Although a number of EGO candidates have been identified in the S21-S24 complex (Cyganowski et al. 2008), none of them appear projected in the close environs of the IR bubble.

S 24 is detected as a radio continuum source in the Molonglo Galactic Plane Survey at 843 MHz (MGPSJ165220-442802, Murphy et al. 2007) (synthesized beam = $65'' \times 45''$) with an integrated flux density $S_{0.843} = 0.92 \pm 0.04 \text{ Jy}$.

Bronfman et al. (1996) performed CS(2-1) line observations with an angular resolution of $50''$, using the SEST telescope. They observed the molecular line in one position towards IRAS16487-4423 (RA,Dec.(J2000) = ($16^{\text{h}}52^{\text{m}}21.24^{\text{s}}$, $-44^{\circ}28'2''.5$), detecting CS emission with a velocity of -43.4 km s^{-1} , indicating the presence of dense gas towards the IR source. Russeil & Castets (2004) observed the CO(1-0) and CO(2-1) lines with an angular resolution of $42''$ and $21''$, respectively, towards a position located $4/3$ to the southeast of the S 24 bubble, detecting molecular gas having velocities in the range -40 km s^{-1} to -37 km s^{-1} . All velocities in this paper are referred to the LSR.

Circular galactic rotation models predict that gas having velocities of -43.4 km s^{-1} lies at near and far kinematical distances of 3.6 kpc and 12-13 kpc, respectively (see for example Brand & Blitz 1993). Similar distances can be derived from maser velocities. Following Henning et al. (2001) we adopt a distance of 3.7 kpc for the S 24 region and its environment. Taking into account a velocity dispersion of 6 km s^{-1} for the interstellar gas, we adopt a distance uncertainty of 0.5 kpc.

Here, we present the very first molecular line and dust continuum study towards S 24 and its environs aimed at determining the distribution of the molecular gas and the dust linked to the bubble and their correlation between them, analyzing their physical conditions, masses and ambient densities, and investigating the status of star formation. The presence of dense gas linked to this region makes it particularly interesting to investigate the physics and kinematics of HII regions and bubbles in dense media, allowing a better understanding of the evolution and star formation processes around these objects. Preliminary results were published in Cappa et al. (2013).

2. Data sets

2.1. Molecular line observations

The molecular gas characteristics were investigated by performing $^{13}\text{CO}(3-2)$ line observations (at 330.58797 GHz) of a region of $3'2 \times 3'2$ during August 2009, and $^{12}\text{CO}(2-1)$, $^{13}\text{CO}(2-1)$, and $\text{C}^{18}\text{O}(2-1)$ line observations of a region of $5' \times 5'$ obtained in October 2010, with the APEX telescope using the APEX-1 and APEX-2 receivers, whose system temperatures are 150 K and 300 K, respectively.

The half-power beam-widths of the telescope are $30''$ (for the (2-1) lines) and $21''$ (for the (3-2) lines). The data were acquired with a FFT spectrometer, consisting of 4096 channels, with a total bandwidth of 1000 km s^{-1} and a velocity resolution of 0.33 km s^{-1} . The region was observed in the position switching mode using the OTF technique with a space between dumps in the scanning direction of $9''$ for the (2-1) transition, and in the position switching mode in the (3-2) transition. The off-source position free of CO emission was located at RA,Dec.(J2000) = ($13^{\text{h}}33^{\text{m}}10.3^{\text{s}}$, $-62^{\circ}2'41''$).

Calibration was performed using Mars and X-TrA sources. Pointing was done twice during observations using X-TrA, o-Ceti and VY-CMa. The intensity calibration has an uncertainty of 10%.

The spectra were reduced using the Continuum and Line Analysis Single-dish Software (CLASS) of the Grenoble Image and Line Data Analysis Software (GILDAS) working group¹. A linear baseline fitting was applied to the data. The rms noise of the profiles after baseline subtraction and calibration is 0.35 K for the (2-1) and (3-2) transitions. The observed line intensities are expressed as main-beam brightness temperatures T_{mb} , by dividing the antenna temperature T_A by the main-beam efficiency η_{mb} , equal to 0.72 for APEX-1 and 0.82 for APEX-2 (Vassilev et al. 2008). The Astronomical Image Processing System (AIPS) package and CLASS software were used to perform the analysis.

2.2. Dust continuum data

To trace cold dust emission we used far-infrared (FIR) images from the *Herschel Space Observatory*² and from the APEX Telescope Large Area Survey of the Galaxy (ATLASGAL, Schuller et al. 2009)

2.2.1. Herschel data

The archival data correspond to the Hi-GAL key program (Hi-GAL:*Herschel* Infrared GALactic plane survey, Molinari et al. 2010, OBSIDs: 1342204094 and 1342204095).

The data have been taken in parallel mode with the instruments PACS (Poglitsch et al. 2010) at 70 and $160 \mu\text{m}$, and SPIRE (Griffin et al. 2010) at 250, 350, and $500 \mu\text{m}$. The chosen tile cover a field of 2.2 square degrees and is approximately centered at $(l,b) = (340^{\circ}, 0^{\circ})$. The angular resolutions for the 5 photometric bands spans from $8''$ to $35'2$ for $70 \mu\text{m}$ to $500 \mu\text{m}$. *Herschel* Interactive Processing Environment (HIPE v12³, Ott 2010) was used to reduce the data, with reduction scripts from standard processing. To combine the two obsids (scan and cross-scan) of PACS archive data, we used the HIPE implementation script of the map merger called Scanmorphos. This script starts from Level 1 frames and creates a map from the data. The obtained pixel sizes are $2''/\text{px}$ to blue and $3''/\text{px}$ to red.

The zero-level of the PACS and SPIRE archive data is unknown, which may cause problems, for example to derive dust temperatures. The zero-level offsets of the SPIRE maps were corrected as described in Bernard et al. (2010). A proper zero-level was set bearing in mind that Planck includes the same fraction of the sky as Hi-GAL data and taking into account that the two common photometric channels of Planck and SPIRE ($857 \text{ GHz} \sim 350 \mu\text{m}$ and $545 \text{ GHz} \sim 550 \mu\text{m}$) are calibrated with respect to FIRAS (Piat et al. 2002). We used the HIPE implementation script to run destriper gain corrections and to re-calculate the absolute offset via cross-calibration with Planck-HFI data (HIPE v12, updated version by L. Conversi 2013).

To estimate fluxes, a Gaussian smoothing was applied to convolve all images at low resolution of $500 \mu\text{m}$ (a FWHM of $35'2$).

Assuming that an extended source has a spectral index $\alpha_s = 4$ (2 for the blackbody emission plus 2 for the opacity of the dust), to convert from monochromatic intensities of point sources to monochromatic extended sources the obtained fluxes of each source were multiplied by 0.98755, 0.98741, and 0.96787 for 250, 350, and $500 \mu\text{m}$, respectively.

2.2.2. ATLASGAL data

This survey was performed at $870 \mu\text{m}$ (345 GHz) with an angular resolution of $19'2$ (HPBW), using the Large Apex Bolometer Camera (LABOCA) (Siringo et al. 2009). The camera operates with 295 pixels at the APEX 12-m sub-millimeter telescope.

² *Herschel* is an ESA space observatory with science instruments provided by European-led Principal Investigator consortia and with important participation from NASA

³ *HIPE* is a joint development by the *Herschel* Science Ground Segment Consortium, consisting of ESA, the NASA *Herschel* Science Center, and the HIFI, PACS and SPIRE consortia members, see <http://herschel.esac.esa.int/HerschelPeople.shtml>.

¹ <http://www.iram.fr/IRAMFR/PDB/class/class.html>

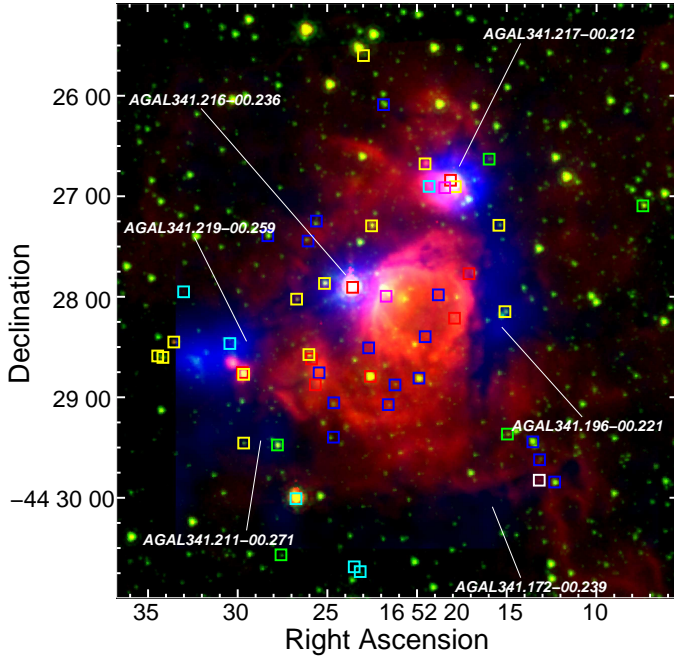


Fig. 2. Overlay of the IRAC emissions at $8\ \mu\text{m}$ (in red) and $3.6\ \mu\text{m}$ (in green) and the LABOCA emission at $870\ \mu\text{m}$ (in blue). Positions of identified YSOs are indicated with squares in different colours: Class I (red) and Class II (blue) sources from the WISE database, Class I (yellow), Class II (white), and Class I/II (green) sources from the Spitzer database, 2MASS sources (cyan), and MSX sources (magenta). Dust clumps from Contreras et al. (2013) are indicated.

2.3. Complementary data

The millimeter and sub-millimeter data were complemented with Spitzer images at 3.6 , 4.5 , and $8.0\ \mu\text{m}$ from the Galactic Legacy Infrared Mid-Plane Survey Extraordinaire (GLIMPSE) (Benjamin et al. 2003), and at $24\ \mu\text{m}$ from the MIPS Inner Galactic Plane Survey (MIPSGAL) (Carey et al. 2005). Radio continuum images at $843\ \text{MHz}$ from the Molonglo Galactic Plane Survey (MGPS2, Murphy et al. 2007) with a synthesized beam of $65'' \times 45''$, and at $1.4\ \text{GHz}$ from the Southern Galactic Plane Survey (Haverkorn et al. 2006) (beam size = $1.7'$) were used.

To investigate the existence of young stellar objects (YSO) candidates projected onto the region we analyzed infrared point sources from the Midcourse Space Experiment (MSX, Price et al. 2001), the Two Micron All Sky Survey (2MASS, Cutri et al. 2003), the Spitzer (Fazio et al. 2004), and the Wide-field Infrared Survey Explorer (WISE, Wright et al. 2010).

3. YSOs projected onto the region

As mentioned in Sect.1, maser emission linked to star-forming regions has been detected in the region. Bearing this in mind, we decided to search for YSO candidates using the MSX, 2MASS, WISE, and Spitzer point source catalogues. To accomplish this we analyzed the IR sources in a region of $3'$ in radius centered at RA,Dec.(J2000) = ($16^{\text{h}}52^{\text{m}}20^{\text{s}}$, $-44^{\circ}28'$). The results are included in Table 1 and their positions are shown in Fig. 2 with different symbols.

To identify YSO candidates in the MSX catalog we followed the criteria of Lumsden et al. (2002), which takes into account their loci in the (F_{21}/F_8 , F_{14}/F_{12}) diagram. Two candidates were found, classified as massive young stellar objects (MYSO),

one of them linked to G341.220-0.213 and the other one to the brightest section of the S 24 bubble.

To search for YSO candidates in the 2MASS catalog, we have constructed an [H-K_s, J-H] diagram using only sources with photometric quality A or B. Six candidates were identified. The two upper panels of Fig. 3 show the 2MASS color-color (CC) and color-magnitude (CM) diagrams with the YSO candidates represented by red asterisks.

Regarding the Spitzer database, we have performed a search for candidates adopting the criteria by Whitney et al. (2004), which allows to discriminate IR sources according to a Class scheme: Class I are protostars surrounded by dusty infalling envelopes and Class II are objects whose emission is dominated by accretion disks (see also Allen et al. 2004). In our study we have identified 14 Class I candidates, 5 Class I/II candidates, and one Class II. The middle panel of Fig. 3 shows the position of the 20 Spitzer sources in the [3.6]-[4.5] vs. [5.8]-[8.0] diagram.

Finally, we used the WISE database to identify YSO candidates based on the criteria by Koenig et al. (2012). We found a total of 24 sources (8 Class I and 16 Class II candidates). The CC-diagram for the WISE sources is illustrated in the bottom panel of Fig. 3.

As can be seen from Fig. 2, four candidates (one MYSO, one 2MASS source, one SPITZER Class I, and one WISE Class I) appear projected onto G341.220-0.213. This fact along with the presence of maser emission towards the region confirms that this is an active star-forming region. Three candidates coincide in position with the S 24 bubble, while only a WISE Class II candidate is projected onto G341.217-0.237. Most of the candidates appear to the east of the IRDC SDC341.193-0.221 and are projected onto emission at $8\ \mu\text{m}$. Finally, two Spitzer candidates coincide with the IRDC SDC341.194-0.221 and other three candidates appear projected onto the borders of G341.210-0.252. A more detailed analysis will be performed in connection to the molecular dust and cold dust in the next sections.

4. The distribution of the interstellar dust

The distribution of the interstellar dust was investigated using data at different wavelengths in the IR.

Figure 2 shows a superposition of the IRAC $8\ \mu\text{m}$ (in red) and $3.6\ \mu\text{m}$ (in green) emissions, and the ATLASGAL $870\ \mu\text{m}$ emission (in blue). Emission at $870\ \mu\text{m}$ reveals the presence of cold dust. This emission approximately encircles the S24 bubble. The dust clumps identified at this wavelength by Contreras et al. (2013) are indicated. AGAL341.216-00.236 and AGAL341.217-00.212 are bright, coincide with G341.217-0.237 and G341.220-0.213, respectively, and correlate with the emission at $1.2\ \text{mm}$ detected by Henning et al. (2001). Weaker emission at $870\ \mu\text{m}$ (AGAL SDC341.196-00.221) coincides in position with the IRDC SDC341.194-0.221 placed to the west of the bubble following its sharp eastern border, and is evident due to the absence of $8\ \mu\text{m}$ emission in Fig. 2. Additionally, two cold dust clumps are present to the south and southeast of S 24, at RA,Dec.(J2000) = ($16^{\text{h}}52^{\text{m}}19.6^{\text{s}}$, $-44^{\circ}30'38''.5$) (AGAL SDC341.172-00.239), and RA,Dec.(J2000) = ($16^{\text{h}}52^{\text{m}}31.71^{\text{s}}$, $-44^{\circ}29'26''.1$) (AGAL SDC341.211-00.271). AGAL SDC341.219-00.259, located at RA,Dec.(J2000) = ($16^{\text{h}}52^{\text{m}}32^{\text{s}}$, $-44^{\circ}28'30''$) coincides with a section of the IRDC SDC341.232-0.268 and is being analyzed by Vasquez et al.(2015, to be submitted). A clear anticorrelation between the emissions at 8 and $870\ \mu\text{m}$ can be noticed towards G341.210-0.252.

Table 1. YSO candidates projected onto S 24 and its environs.

MSX candidates												
#	[h m s]	[° ' "]	MSX name	8 μ m	12 μ m	14 μ m	21 μ m	Fluxes[Jy]				Classification
1	16 52 21.7	-44 27 59.8	G341.2105-00.2325	6.2092	14.360	16.477	39.985					MYSO
2	16 52 18.5	-44 26 55.0	G341.2182-00.2136	2.5740	3.0962	4.1452	14.837					MYSO
2MASS candidates:												
#	α [h m s]	δ [° ' "]	2MASS name	Spitzer name	J	H	K_S	[3.6]	[4.5]	[5.8]	[8.0]	Fluxes[mag]
3	16 52 19.32	-44 26 54.2	16521932-4426541		14.586	14.184	13.696					
4	16 52 23.17	-44 30 44.1	16522316-4430441	G341.1778-00.2650	14.653	14.146	13.631	12.658	12.258			
5	16 52 23.50	-44 30 41.3	16522350-4430412	G341.1791-00.2651	14.177	13.722	13.266	12.579	12.373	12.227		
6	16 52 26.83	-44 30 05.6	16522683-4430055	G341.1929-00.2666	15.733	15.114	14.377	13.308				
7	16 52 30.43	-44 28 28.0	16523043-4428279	G341.2207-00.2576	14.625	14.166	13.781	13.862	13.075			
8	16 52 33.01	-44 27 57.1	16523300-4427570		15.994	15.233	14.591	13.867	13.231			
Spitzer candidates:												
#	α [h m s]	δ [° ' "]	Spitzer name	2MASS name	J	H	K_S	[3.6]	[4.5]	[5.8]	[8.0]	Class
9	16 52 07.42	-44 27 05.8	G341.1950-00.1902	16520740-4427055	13.721	12.690	12.025	10.569	9.877	9.300	8.599	I/II
10	16 52 13.18	-44 29 49.6	G341.1708-00.2324					13.868	13.610	10.924	9.793	II
11	16 52 14.96	-44 29 22.0	G341.1800-00.2316	16521493-4429218	15.478	14.088	<11.675	11.695	11.297	10.701	10.078	I/II
12	16 52 15.10	-44 28 08.9	G341.1960-00.2190					12.845	10.867	9.955	9.422	I
13	16 52 15.44	-44 27 17.4	G341.2077-00.2107					12.808	11.475	10.675	10.211	I
14	16 52 15.98	-44 26 37.9	G341.2172-00.2050					12.690	11.839	11.375	10.424	I/II
15	16 52 17.93	-44 26 53.0	G341.2176-00.2121	16521792-4426524	<17.104	<13.974	<11.036	7.986	6.215	5.140	4.649	I
16	16 52 19.55	-44 26 40.7	G341.2233-00.2137					12.436	12.049	9.074	7.325	I
17	16 52 22.53	-44 27 17.7	G341.2210-00.2270	16522251-4427175			14.169	10.627	9.801	9.094	8.498	I
18	16 52 22.98	-44 25 36.1	G341.2437-00.2101					12.595	12.343	11.746	9.833	I
19	16 52 25.16	-44 27 52.1	G341.2186-00.2391					11.203	9.876	8.916	8.330	I
20	16 52 26.03	-44 28 34.6	G341.2111-00.2486					11.410	10.145	9.104	8.676	I
21	16 52 26.71	-44 28 01.5	G341.2195-00.2443					13.473	11.655	10.182	9.131	I
22	16 52 27.59	-44 30 34.1	G341.1884-00.2733					12.480	11.695	11.129	10.675	I/II
23	16 52 27.78	-44 29 28.5	G341.2028-00.2622	16522776-4429282	<16.378	14.500	12.353	10.098	9.342	8.706	8.303	I/II
24	16 52 29.66	-44 28 46.3	G341.2154-00.2590					9.366	8.211	7.294	6.387	I
25	16 52 29.66	-44 29 27.4	G341.2066-00.2663					12.577	11.575	10.803	10.144	I
26	16 52 33.55	-44 28 27.0	G341.2269-00.2646					13.792	11.341	9.639	8.569	I
27	16 52 34.16	-44 28 36.2	G341.2261-00.2676	16523407-4428356	12.694	12.351	12.242	11.707	10.458	9.395	8.610	I
28	16 52 34.45	-44 28 35.3	G341.2268-00.2681					12.884	11.260	10.448	10.137	I
WISE candidates:												
#	α [h m s]	δ [° ' "]	WISE name	2MASS name	J	H	K_S	[3.4]	[4.6]	[12.0]	[22.0]	Class
29	16 52 12.325	-44 29 50.65	J165212.32-442950.6	16521231-4429505	<17.338	13.789	11.393	10.100	9.697	7.192	4.469	II
30	16 52 13.168	-44 29 37.35	J165213.16-442937.3	16521312-4429365	<15.988	<14.795	13.835	11.981	11.412	6.822	3.941	II
31	16 52 13.541	-44 29 26.67	J165213.54-442926.6	16521357-4429260	<16.221	<12.706	<10.475	9.009	8.647	7.232	4.362	II
32	16 52 17.106	-44 27 46.29	J165217.10-442746.2					11.963	10.817	6.243	3.134	I
33	16 52 17.911	-44 28 12.87	J165217.91-442812.8					10.671	9.222	4.283	0.900	I
34	16 52 17.961	-44 26 52.95	J165217.96-442652.9	16521792-4426524	<17.104	<13.974	<11.036	8.084	4.888	2.607	-1.190	I
35	16 52 18.812	-44 27 58.92	J165218.81-442758.9					7.601	7.286	2.830	-0.197	II
36	16 52 19.544	-44 28 23.91	J165219.54-442823.9	16522015-4428284	13.624	11.609	10.718	8.584	8.013	3.537	0.262	II
37	16 52 19.890	-44 28 48.64	J165219.89-442848.6	16521984-4428486	14.585	<11.779	<10.221	8.933	8.581	5.674	1.653	II
38	16 52 21.228	-44 28 52.70	J165221.22-442852.6	16522121-4428522	<16.713	<15.318	13.912	11.494	10.541	5.786	2.482	II
39	16 52 21.603	-44 29 04.46	J165221.60-442904.4	16522157-4429046	<15.992	<14.358	13.513	11.138	10.539	5.721	2.730	II
40	16 52 21.886	-44 26 02.99	J165221.88-442602.9	16522182-4426053	<17.576	14.702	12.012	10.136	9.590	8.005	4.540	II
41	16 52 22.602	-44 28 47.58	J165222.60-442847.5	16522260-4428476	<17.062	14.859	11.133	8.627	7.384	5.155	1.507	I
42	16 52 22.696	-44 28 30.59	J165222.69-442830.5					9.250	8.748	4.270	0.807	II
43	16 52 23.588	-44 27 54.44	J165223.58-442754.4	16522366-4427538	<14.662	<13.571	11.702	7.575	4.815	2.094	-0.978	I
44	16 52 24.638	-44 29 03.36	J165224.63-442903.3	16522467-4429039	14.852	12.931	12.028	10.809	10.439	5.880	2.396	II
45	16 52 24.659	-44 29 23.87	J165224.65-442923.8	16522482-4429238	<15.985	<15.266	<14.017	11.731	11.302	7.970	5.320	II
46	16 52 25.457	-44 28 45.46	J165225.45-442845.4					10.425	9.442	4.848	1.575	II
47	16 52 25.605	-44 27 14.89	J165225.60-442714.8					11.632	10.663	7.596	3.503	II
48	16 52 25.668	-44 28 52.61	J165225.66-442852.6	16512576-4428529	16.343	<15.243	<13.988	10.862	9.794	5.340	2.220	I
49	16 52 25.880	-44 28 37.18	J165225.87-442837.1	16522577-4428393	<15.257	<14.320	14.104	11.114	9.575	5.175	2.238	I
50	16 52 26.071	-44 27 26.80	J165226.07-442726.8	16522616-4427259	<15.232	<14.120	13.194	11.546	10.794	6.597	3.390	II
51	16 52 28.408	-44 27 23.43	J165228.40-442723.4	16522829-4427235	<17.943	14.305	11.736	10.336	9.777	8.372	5.300	II
52	16 52 29.731	-44 28 45.25	J165229.73-442845.2	16522964-4428459	<14.407	<13.557	<12.079	9.495	8.082	4.686	1.089	I

Figure 4 displays an overlay of the emission at 870 μ m (in contours) and the emissions at 4.5 (in green) and 8.0 μ m (in red) from Spitzer, and 250 μ m (in blue) from Herschel. Dust clumps identified at 870 μ m have their counterparts at 250 μ m, although the emission at 250 μ m, which also shows the distribution of cold dust, appears more extended. The brightest dust clumps at 250 μ m coincide with G341.220-0.213 and G341.217-0.237, and are also detected at 350 and 500 μ m (the images are not shown here). The S 24 bubble appears clearly surrounded to the east and north by SPIRE emission. Herschel emission at these wavelengths is also projected onto the IRDC identified to the west of S 24, which can be defined as a Herschel bright IRDC

(Peretto et al. 2010). Faint extended emission at 250 μ m also coincides with the IRDC SDC341.171-0.241, bordering the weak halo of 8 μ m emission, and near RA, Dec. (J2000) = (16^h52^m28^s, -44°29'30"), in coincidence with a Spitzer point source identified at 4.5 μ m. In summary, the correlation between 250 and 870 μ m is excellent.

The PACS emission at 70 and 160 μ m differs significantly from the emission at larger wavelengths (Fig. 5). The brightest source at these wavelengths coincides with G341.220-0.213. G341.217-0.237 also emits at 70 and 160 μ m, while a bright source is also detected to the east of G341.217-0.237. Faint emission correlates with the S 24 bubble, mainly at 70 μ m. This

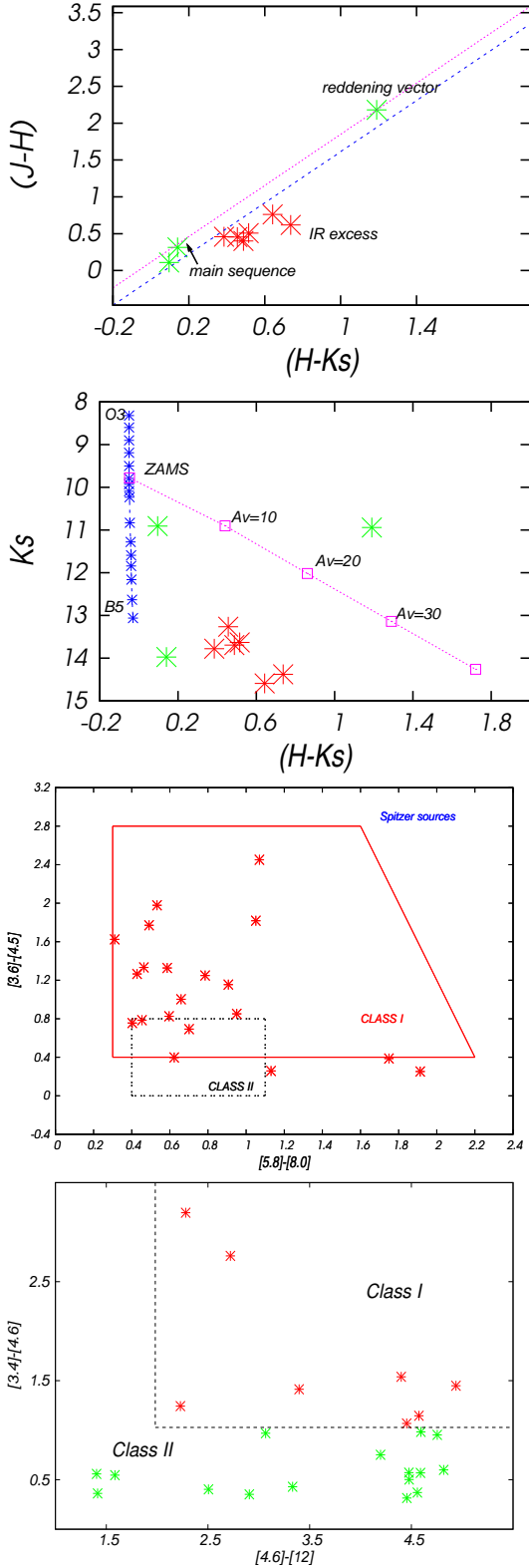


Fig. 3. Upper panels: $[H-K_s, J-H]$ and $[H-K_s, K_s]$ diagrams of the 2MASS YSO candidates indicated by red crosses. Green asterisks correspond to main sequence stars projected onto the S 24 bubble (see Sect. 7.2). The dashed lines show the reddening vectors corresponding to M0 III and B2 V stars in the CC-diagram, and to B2 V stars in the CM-diagram. The squares are placed at intervals of ten magnitudes of visual extinction. Middle panel: Location of YSO candidates from the Spitzer database. Crosses represent Class I and II sources. Bottom panel: YSO candidates from the WISE database. Class I and II sources are indicated in red and green, respectively.

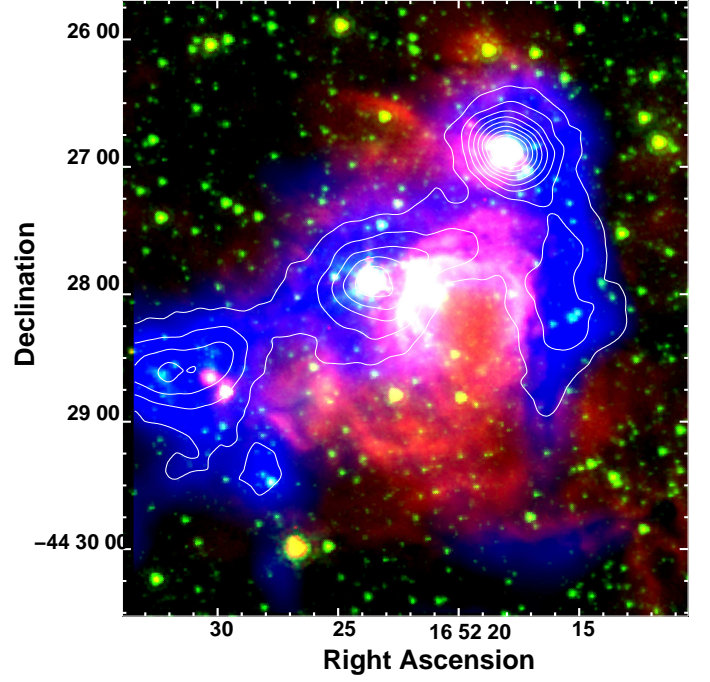


Fig. 4. Composite image of the IRAC emission at 4.5 (in green) and 8.0 μm (in red), and the Herschel emission at 250 μm (in blue). Contours correspond to the emission at 870 μm and goes from 0.5 MJy sr^{-1} .

emission delineates the sharp western border of the bubble. The IRDC SDC 341.194-0.221 can not be identified either at 70 μm or at 160 μm . Emission at 70 μm is also projected onto G341.210-0.252, located at $16^{\text{h}}52^{\text{m}}26.5^{\text{s}}$, $-44^{\circ}28'50''$, but it is lacking at 160 μm and higher wavelengths. The presence of emission at 70 μm and its absence at 160 μm suggests the existence of dust at a higher temperature.

Dust temperatures T_{dust} for the region using the PACS images at 70 μm and 160 μm were estimated by convolving the image at 70 μm down to the angular resolution at 160 μm , applying color corrections, subtracting a background local to the S 24 bubble, and assuming that the emission is optically thin.

The *color-temperature* map was constructed as the inverse function of the ratio map of Herschel 70 μm and 160 μm color-and-background-corrected maps, i.e., $T_{\text{dust}} = f_{(T)}^{-1}$ (see details in (Preibisch et al. 2012; Ohlendorf et al. 2013)). In the optically thin thermal dust emission regime $f_{(T)}$ has the following parametric form:

$$f_{(T)} = \frac{S_{\nu}(\nu = 70 \mu\text{m})}{S_{\nu}(\nu = 160 \mu\text{m})} = \frac{B_{\nu}(70 \mu\text{m}, T)}{B_{\nu}(160 \mu\text{m}, T)} \left(\frac{70}{160} \right)^{\beta_d} \quad (1)$$

where $B_{\nu}(\nu, T)$ is the Black Body Planck function and β_d corresponds to the spectral index of the thermal dust emission. The pixel-to-pixel temperature was calculated assuming a typical $\beta_d = 2$.

The obtained dust temperature map is shown in Fig. 6. We were able to estimate dust temperatures for G341.220-0.213, G341.217-0.237, G341.210-0.252, and the S 24 bubble. Dust temperatures using this method were almost impossible to obtain for the IRDCs due to their low emission at 70 μm . Values for G341.220-0.213 are in the range 26-30 K, while for G341.217-0.237 temperatures are about 29 K. As regards the S 24 bubble, the image reveals a clear gradient in dust temperatures (from 26 to 60 K): the higher the dust temperatures, the closer to the center of the bubble, a fact compatible with the presence of ionizing

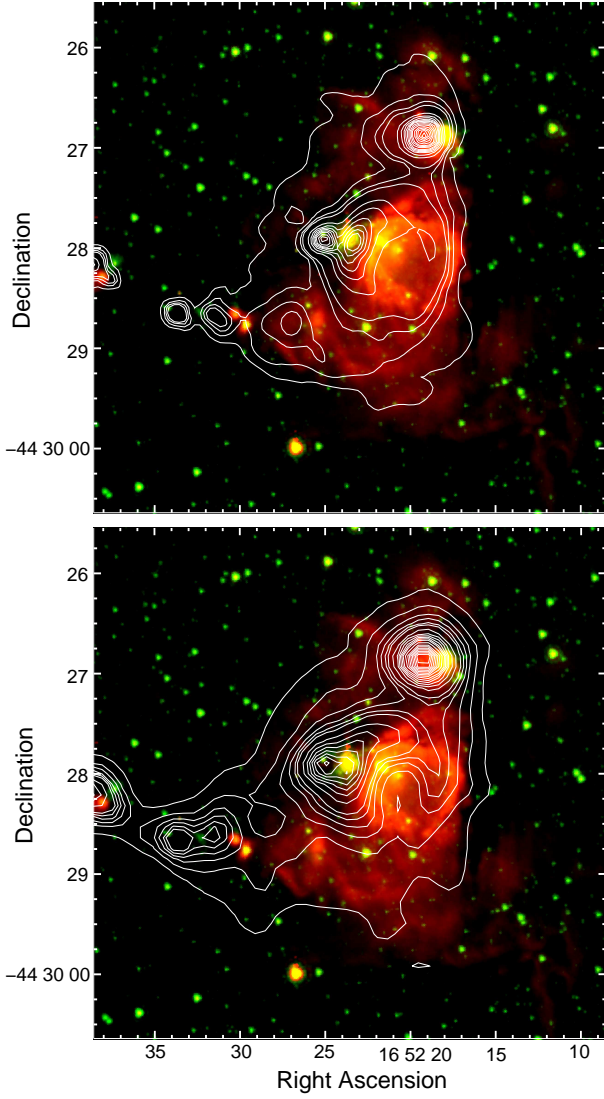


Fig. 5. *Upper panel:* Overlay of the PACS emission at 70 μm (contours) and the IRAC 8 μm emission (color scale). Contours are 0.3 to 0.9 Jy px^{-1} , in steps of 0.2 Jy px^{-1} ; 2 to 7 Jy px^{-1} , in steps of 1 Jy px^{-1} ; 9, 11, 13 to 33 Jy px^{-1} , in steps of 4 Jy px^{-1} . *Bottom panel:* Overlay of the PACS emission at 160 μm (contours) and the IRAC 8 μm emission (color scale). Contours are 2 to 7 Jy px^{-1} , in steps of 1 Jy px^{-1} ; 10 to 25 Jy px^{-1} , in steps of 3 Jy px^{-1} ; and 30 to 65 Jy px^{-1} , in steps of 5 Jy px^{-1} .

sources linked to S 24. Dust temperatures for S 24 are compatible with values derived by Watson et al. (2010) for the interior of IR dust bubbles based on images at 24 and 70 μm from MIPS and by Anderson et al. (2012) for HII regions using Herschel data. Dust temperatures for G341.217-0.237 are about 28 K.

We also estimated T_{dust} for G341.220-0.213 from the whole set of Herschel data and the LABOCA image by fitting a Planck function. Fluxes at 70, 160, 250, 350, and 500 μm were calculated with HIPE using rectangular sky aperture photometry and convolving all images down to the angular resolution at 500 μm . For each aperture we measured the average surface brightness with an uncertainty derived from the standard deviation of the surface brightness within each aperture and the flux calibration uncertainty. Derived values are 776.0, 1047.2, 499.5, 213.3, and 69.3 Jy at 70, 160, 250, 350, and 500 μm , respectively. Fig. 7 shows the spectral energy distribution (SED), which also includes the flux density at 870 μm obtained by Contreras et al.

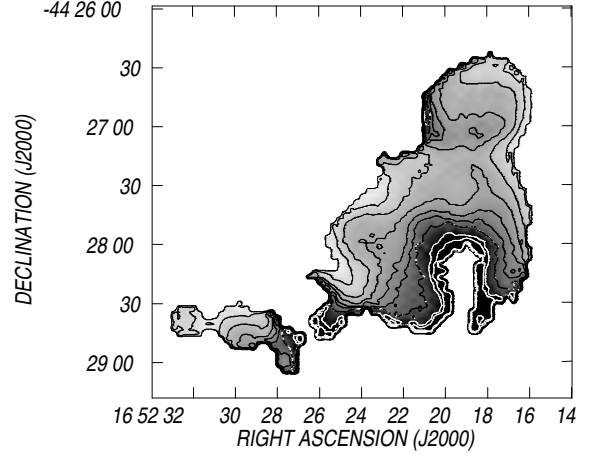


Fig. 6. Dust temperature map derived from the Herschel emission at 70 and 160 μm . Grayscale goes from 20 to 50 K. Contour levels correspond to 20 to 32 K, in steps of 3 K, 35, 40, 50, and 60 K. Darkest regions indicate highest dust temperatures.

(2013) ($14.63 \pm 2.47 \text{ Jy}$), and the best fitting, which corresponds to $T_{\text{dust}} = 28 \pm 1 \text{ K}$. Dust temperature for G341.217-0.237 from a spectral energy distribution (SED) is difficult to determine. Due to the poor angular resolution of the Herschel images at 350 and 500 μm , fluxes estimated from these data includes part of S 24, what can fake the dust temperature.

Dust masses can be estimated from the expression (Hildebrand 1983)

$$M_{\text{dust}} = \frac{S_{870} d^2}{\kappa_{870} B_{870}(T_{\text{dust}})} \quad (2)$$

where S_{870} is the flux density at 870 μm , $d = 3.7 \pm 0.5 \text{ kpc}$, $\kappa_{870} = 1.0 \text{ cm}^2/\text{gr}$ is the dust opacity per unit mass (Ossenkopf & Henning 1994), and $B_{870}(T_{\text{dust}})$ is the Planck function for a temperature T_{dust} .

In addition to dust, different gas phases can contribute to the emission at 870 μm . This emission should be subtracted before estimating dust masses. Two processes may contribute to the emission at this wavelength in addition to the thermal emission from cold dust: molecular emission from the CO(3-2) line and free-free emission from ionized gas. The continuum emission contribution at 345 GHz due to ionized gas was estimated from the radio continuum image at 1.4 GHz considering that the radio emission is thermal (see Sect. 5) using the expression $S_{345} = (345/1.4)^{-0.1} S_{1.4}$. Adopting $S_{1.4} = 1.2 \text{ Jy}$ (see Sect. 5), this contribution amounts to about 1% of the emission at 870 μm . To estimate the contribution from the CO(3-2), we took into account the intensity in the $^{13}\text{CO}(3-2)$ line. The contribution of this mechanism is less than 1%. Thus, the contribution by both mechanisms is within calibration uncertainties.

Adopting $T_{\text{dust}} = 28 \pm 1 \text{ K}$ for G341.220-0.213, and a flux $S_{870} = 14.63 \pm 2.47 \text{ Jy}$ derived by Contreras et al. (2013) for AGAL341.217-00.212, a dust mass $M_{\text{dust}1} = 12.9 \pm 6.3 M_{\odot}$ can be estimated for G341.220-0.213. Assuming the same dust temperature for G341.217-0.237, and a flux $S_{870} = 25.55 \pm 4.11 \text{ Jy}$ (for AGAL341.216-00.236), we estimate $M_{\text{dust}2} = 22.4 \pm 11.0 M_{\odot}$. Finally, for the IRDC to the west of the bubble, we adopt temperatures in the range 10-20 K (see Peretto et al. 2010), which, along with a flux $S_{870} = 12.43 \pm 2.14 \text{ Jy}$ for AGAL341.196-00.221, results in $M_{\text{dust-irdc}} = 17\text{-}57 M_{\odot}$. Uncertainties in these values are about 50%. Adopting a gas-to-

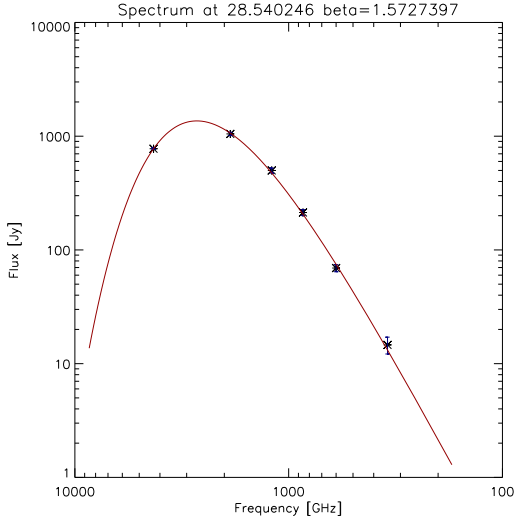


Fig. 7. SED for G341.220-0.213 obtained using Herschel and ATLASGAL fluxes.

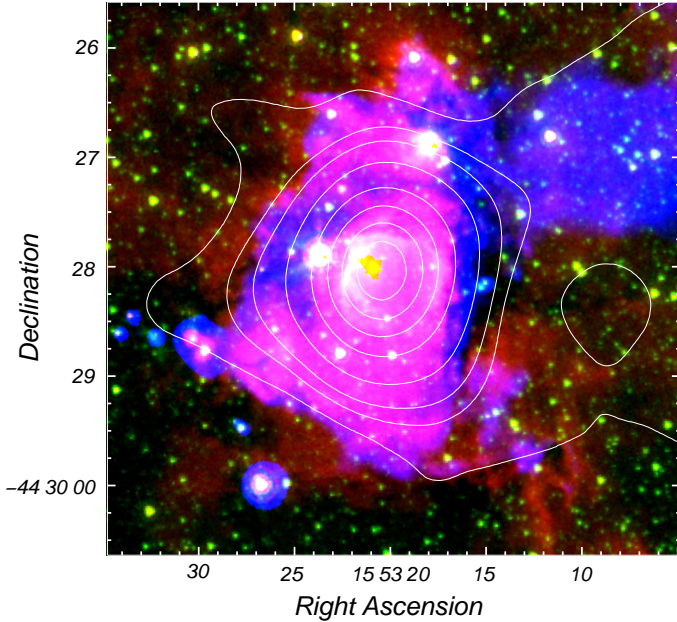


Fig. 8. Overlay of the radio continuum emission at 843 MHz (contours), the IRAC emission at $8\ \mu\text{m}$ (in red), the MIPSGAL emission at $24\ \mu\text{m}$ (in blue), and the IRAC emission at $3.6\ \mu\text{m}$ (in green). Contours correspond to 10, 30, and $50\ \text{mJy beam}^{-1}$, and from 100 to $500\ \text{mJy beam}^{-1}$ in steps of $100\ \text{mJy beam}^{-1}$.

dust ratio of 100, gas masses are $1300\ M_{\odot}$ for G341.220-0.213, $2300\ M_{\odot}$ for G341.217-0.237, and $1700\text{--}5700\ M_{\odot}$ for the IRDC.

5. The ionized gas

Figure 8 displays an overlay of the radio continuum image at 843 MHz (in contours) and the emissions at $8\ \mu\text{m}$ and $24\ \mu\text{m}$ (in colorscale). The image at 843 MHz reveals radio emission coincident with the sources, and in particular with the S 24 bubble. The emission at $1.4\ \text{GHz}$ (not shown here) correlates with that at the lower frequency. We derived a flux density $S_{1.4} = 1.2\ \text{Jy}$. Taking into account a flux density $S_{0.843} = 0.92\ \text{Jy}$, a spectral index $\alpha = 0.5$ ($S_{\nu} \propto \nu^{\alpha}$) can be estimated from the emission at both frequencies. The α -value indicates that at least at 843 MHz, the

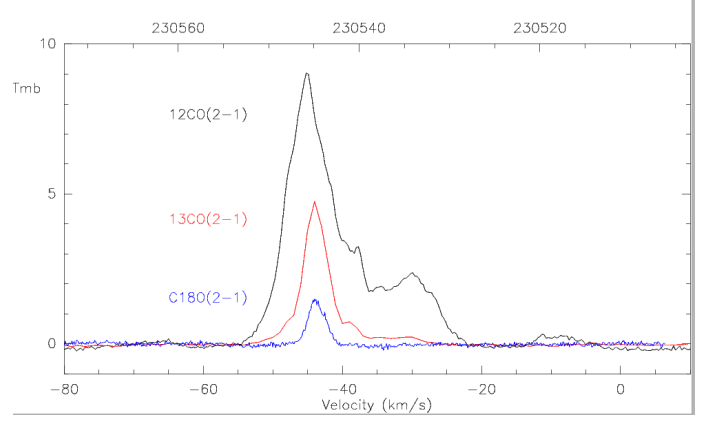


Fig. 10. Upper panel: CO(2-1) (in black), $^{13}\text{CO}(2-1)$ (in red), and $\text{C}^{18}\text{O}(2-1)$ (in blue) spectra obtained by averaging the observed spectra in the region of S 24. Intensity is expressed as main-beam brightness-temperature.

radio emission is optically thick, and that the source is thermal in nature.

Figure 8 also shows that S 24, as well as G341.220-0.213, G341.217-0.237, and G341.210-0.252 emit at $24\ \mu\text{m}$, indicating the presence of warm dust linked to the sources, and consequently, the existence of excitation sources inside them. Emission at this wavelength also coincides with the PDR, as revealed by the emission at $8\ \mu\text{m}$. In fact, the emission at $24\ \mu\text{m}$ from HII regions has two components: emission from very small grains out of thermal equilibrium, detected inside the HII region, and thermal emission from the PDR from grains in thermal equilibrium (Anderson et al. 2012).

Lower limits for the electron density n_e and the ionized mass M_i can be derived from the image at 843 MHz. For an estimated flux density of $0.92\ \text{Jy}$, using the classical expressions by (Mezger & Henderson 1967), a typical electron temperature of $10^4\ \text{K}$, and bearing in mind a He abundance of 10% by particle number and that He is single ionized, we derived $n_e > 200\ \text{cm}^{-3}$, and $M_i > 22\ M_{\odot}$. Bearing in mind that the emission at $8\ \mu\text{m}$ due to PAH in the photodissociation region marks the boundary of the ionized region, we measured a radius of $0.33\ \text{pc}$ for the HII region.

Although these results can not be used to determine either the ionized mass or the electron density, they reveal the existence of an HII region.

6. The distribution of the molecular gas

Figure 9 displays the CO(2-1) and $^{13}\text{CO}(2-1)$ spectra obtained for the region under study. The spatial separation between these profiles is $30''$. Relative coordinates are expressed in arcseconds, referred to RA, Dec.(J2000) = $(16^{\text{h}}52^{\text{m}}20^{\text{s}}, -44^{\circ}27'30'')$. The individual spectra show that the molecular emission appears concentrated between $\sim -55\ \text{km s}^{-1}$ and $-20\ \text{km s}^{-1}$, where a number of velocity components are present, and an isolated component near $-10\ \text{km s}^{-1}$ (which is not going to be taken into account). The CO(2-1)/ $^{13}\text{CO}(2-1)$ line ratios are close to 1-1.5 in the central and northeastern parts of the figure, suggesting that the gas is optically thick at $^{13}\text{CO}(2-1)$ where S 24, G341.220-0.213, and G341.217-0.237 are located.

The CO spectra of Fig. 10 illustrate the general behaviour of the molecular gas towards the entire region. There, we show the CO(2-1), $^{13}\text{CO}(2-1)$, and $\text{C}^{18}\text{O}(2-1)$ spectra averaged within

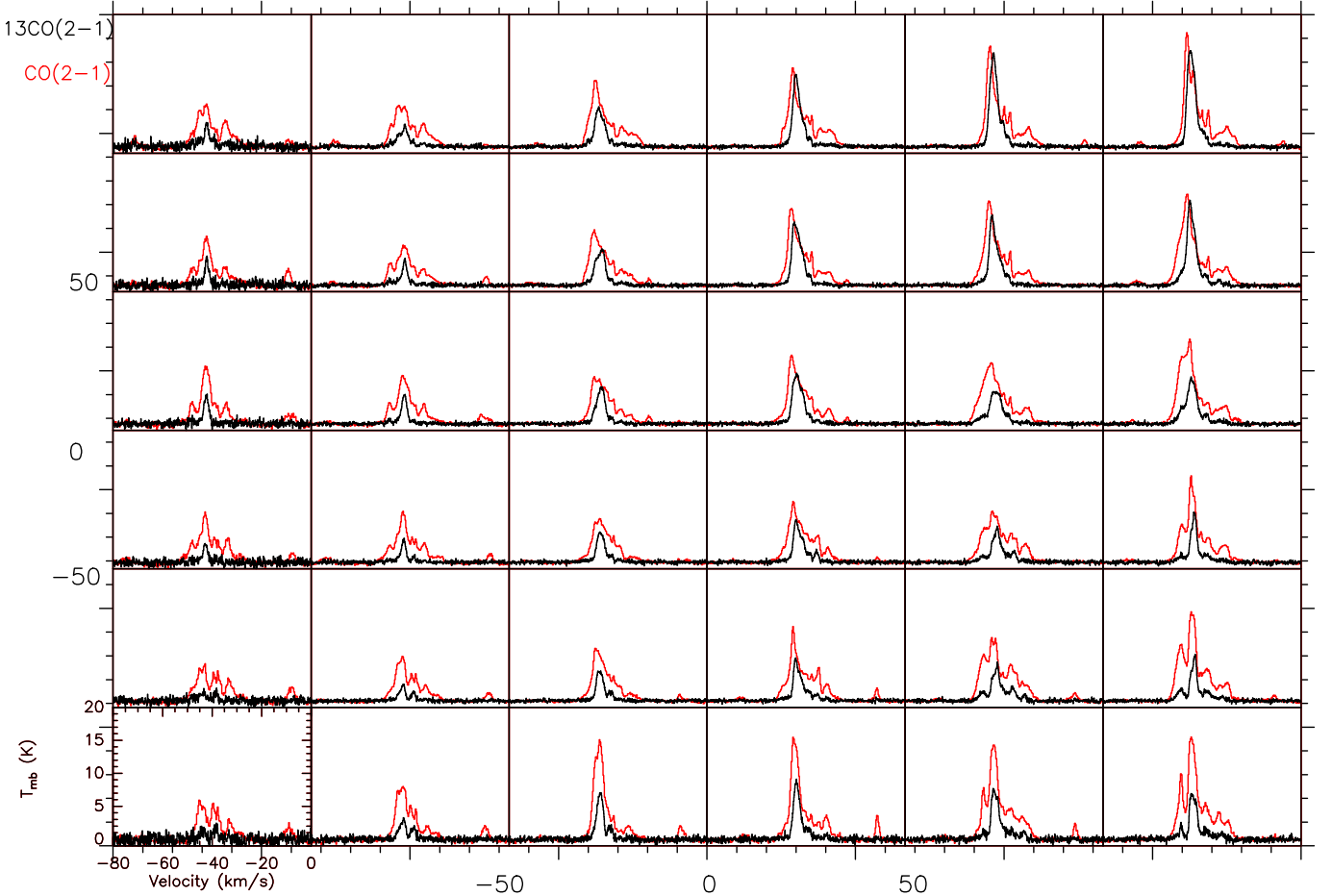


Fig. 9. Decl. vs. R.A. map showing $^{12}\text{CO}(2-1)$ (in red) and $^{13}\text{CO}(2-1)$ (in black) profiles observed in a $5' \times 5'$ region centered in the S 24 bubble. Each profile shows T_{mb} in the interval from -1 K to 20 K vs. LSR velocity in the range from -80 km s^{-1} to 0 km s^{-1} . The (0,0) position corresponds to RA,Dec.(J2000) = ($16^{\text{h}}52^{\text{m}}20^{\text{s}}$, $-44^{\circ}27'30''$). Note that R.A. increases towards the right.

the observed region. At least three velocity components can be identified in the line of sight within the velocity interval from -55 km s^{-1} to -20 km s^{-1} .

The bulk of the molecular emission is detected in the three molecular lines and peaks at $\approx -45 \text{ km s}^{-1}$, while fainter gas components are present at $\approx -38 \text{ km s}^{-1}$ and -30 km s^{-1} . The faintest component is present near -10 km s^{-1} in the $^{12}\text{CO}(2-1)$ line only. The velocity components peaking at -38 km s^{-1} and -30 km s^{-1} can be barely identified in the $^{13}\text{CO}(2-1)$ spectrum and are absent in the $\text{C}^{18}\text{O}(2-1)$ profile. Gas components having the same velocity can be also identified in the averaged $J = 3-2$ profile (not shown here).

Circular galactic rotation models (e.g. Brand & Blitz 1993) predict near and far kinematical distances in the range 3.2-3.9 kpc and 12-13 kpc, respectively, for the gas component at -45 km s^{-1} , while near and far kinematical distances in the range 2.4-3.5 and 12-14 kpc, respectively, were obtained for gas in the components at -38 km s^{-1} and -30 km s^{-1} . Particularly for the component at -45 km s^{-1} , near kinematical distances are compatible with previously adopted values for the region of S 24.

To illustrate the spatial distribution of the molecular gas we show in Fig. 11 the emission of the $^{13}\text{CO}(2-1)$ in the interval -49.9 km s^{-1} to -40.5 km s^{-1} , in steps of 1.05 km s^{-1} (in grayscale) superimposed to the emission at $8 \mu\text{m}$ (in contours) for comparison. Most of the molecular emission has velocities in the interval from -46.8 km s^{-1} to -41.5 km s^{-1} .

As regards the S 24 bubble, CO emission encircles the eastern and northern sections at -46.8 km s^{-1} and -45.7 km s^{-1} . In the images at -44.6 km s^{-1} , -43.6 km s^{-1} , and -42.5 km s^{-1} this emission extends to the western section of the bubble, where the IRDC SDS 341.194-0.221 is present. S 24 appears almost completely encircled by molecular gas in the images at -43.6 km s^{-1} and -42.5 km s^{-1} , while at -41.5 km s^{-1} and -40.5 km s^{-1} the CO emission is present to the west of the bubble, coincident with the IRDC.

A close inspection of the emission in the interval from -48.9 km s^{-1} to -42.5 km s^{-1} reveals bright molecular emission linked to G341.217-0.237 and the eastern border of the IR bubble.

The CO emission associated with the different IR sources described above will be analyzed in more detail in the following sections. Material linked to the IRDC SDC341.232-0.268 and present in the interval from -49.5 km s^{-1} to -42.1 km s^{-1} is being analyzed in detail by Vasquez et al. (2015).

7. Putting all together

In this section we investigate in more detail the gas distribution in S 24 and the different features in its environment and its relation to the warm and cold dust and the YSO candidates.

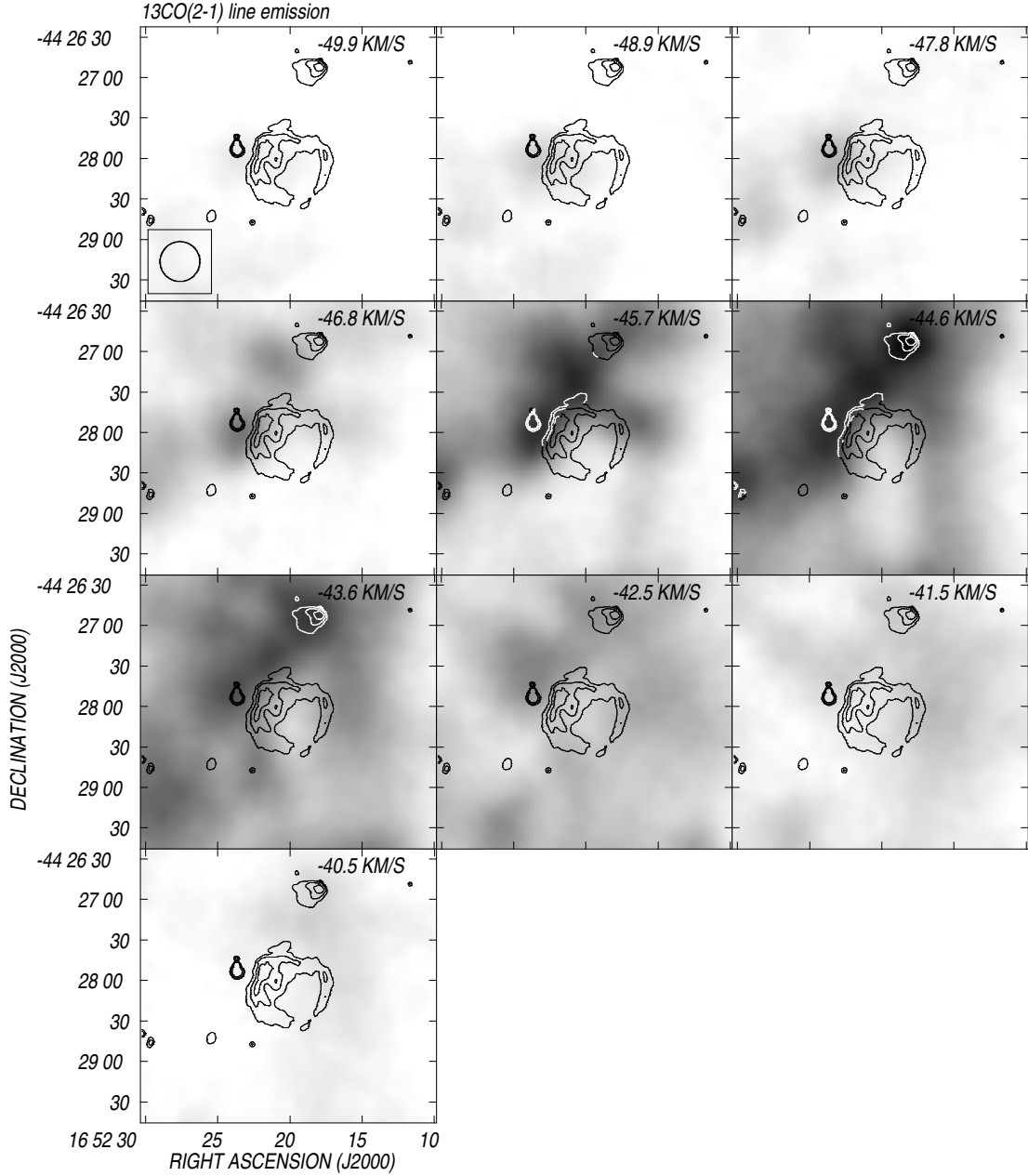


Fig. 11. Channel maps of the $^{13}\text{CO}(2-1)$ line (in grayscale) for the velocity interval from -49.9 km s^{-1} to -40.5 km s^{-1} in steps of 1.05 km s^{-1} overlaid onto the $8 \mu\text{m}$ emission (in contours). Grayscale goes from 0.5 K to 17.0 K .

7.1. G341.220-0.213

Panel A of Fig. 12 displays the $^{13}\text{CO}(3-2)$ emission having velocities in the range -43.8 km s^{-1} and -42.0 km s^{-1} superimposed onto the emission at $8 \mu\text{m}$ for comparison. The emission distribution at these velocities reveals a molecular arc-like structure closely encircling the bright northern and western borders of G341.220-0.213. At $8 \mu\text{m}$, G341.220-0.213, which resembles a horseshoe, is open opposite to the molecular emission. The IR source is clearly interacting with the surrounding molecular gas and is evolving in a medium with a density gradient. The coincidence of G341.220-0.213 with emission at $24 \mu\text{m}$ (see Sect. 5) suggests the presence of excitation sources inside. Bearing in mind the morphology of the source at $8 \mu\text{m}$ and in molecular lines, a champagne flow (Garay & Lizano 1999) can not be discarded.

A number of YSO candidates appears inside the horseshoe: one MSX source classified as MYSO (# 2 in Table 1); one Spitzer and one WISE sources coincident in position, both classified as Class I (# 15 and # 34). We inspected the spectral energy distribution (SED) of # 2, # 15, and # 34, assumed to be only one source, using the on-line⁴ tool developed by Robitaille et al. (2007), which can help to discriminate between evolved stars and reliable candidate YSOs. This tool fits radiation transfer models to observational data according to a χ^2 minimization algorithm. Models that accomplished the following condition were selected:

$$\chi^2 - \chi_{min}^2 < 3n \quad (3)$$

⁴ <http://caravan.astro.wisc.edu/protostars/>

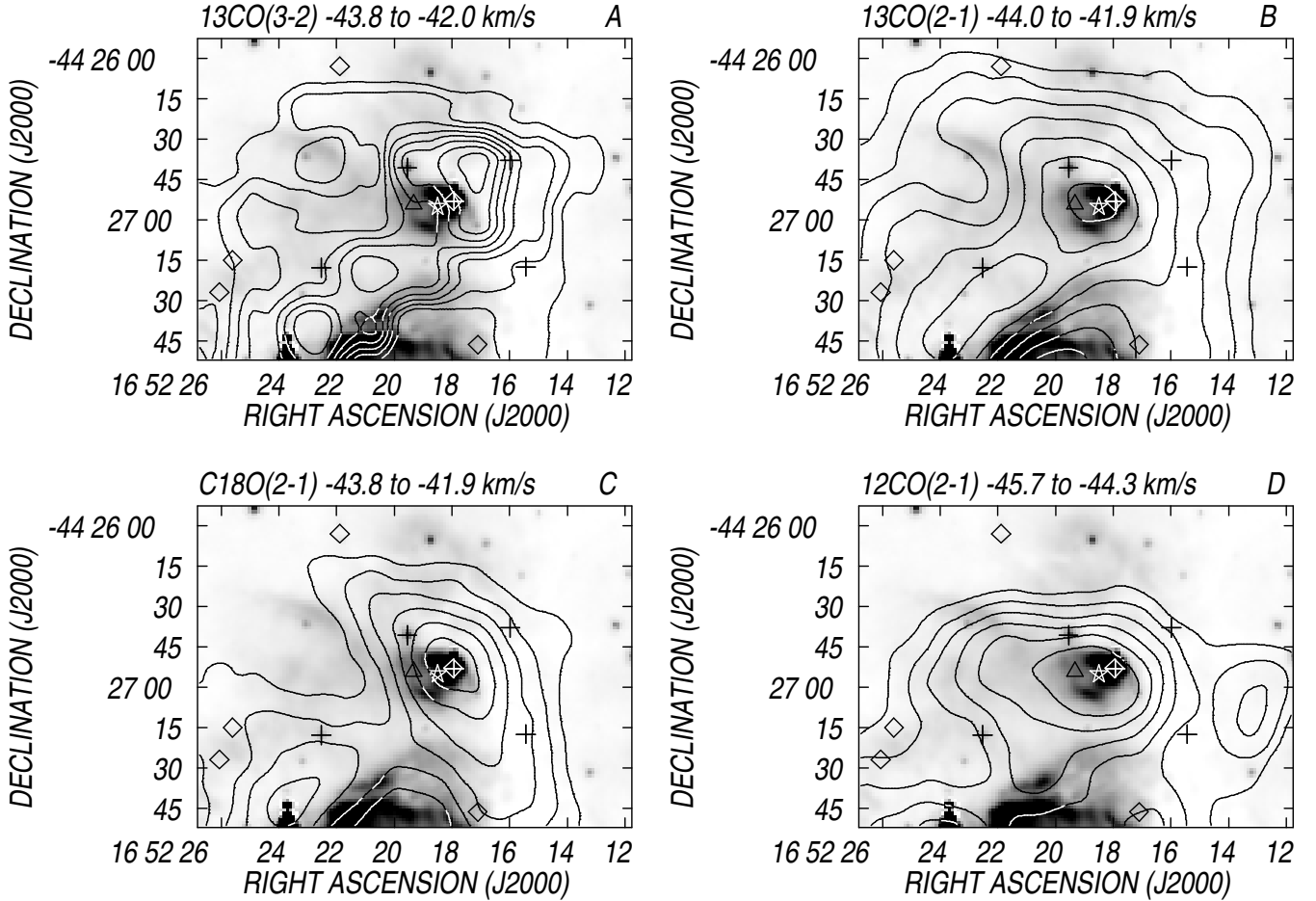


Fig. 12. Panels A-D: Overlay of the CO emission distribution in contours and the emission at $8\ \mu\text{m}$ in grayscale towards G341.220-0.213. *Panel A:* $^{13}\text{CO}(3-2)$ line emission in the interval from $-43.8\ \text{km s}^{-1}$ to $-42.0\ \text{km s}^{-1}$. Contours are from 5 K to 12 K (T_{mb}) in steps of 1 K, the different symbols mark the position of YSO candidates: *stars:* MSX sources, *triangles:* 2MASS sources, *crosses:* Spitzer sources, *diamonds:* WISE sources. *Panel B:* $^{13}\text{CO}(2-1)$ line emission in the interval from $-44.0\ \text{km s}^{-1}$ to $-41.9\ \text{km s}^{-1}$. Contours are from 5 K to 11 K (T_{mb}) in steps of 1 K. *Panel C:* $\text{C}^{18}\text{O}(2-1)$ line emission in the interval from $-43.8\ \text{km s}^{-1}$ to $-41.9\ \text{km s}^{-1}$. Contours are from 1.5 K to 4 K (T_{mb}) in steps of 0.5 K. *Panel D:* $^{12}\text{CO}(2-1)$ line emission in the interval from $-45.7\ \text{km s}^{-1}$ to $-44.3\ \text{km s}^{-1}$. Contours are from 9 K to 14 K (T_{mb}) in steps of 1 K.

where χ_{min}^2 is the minimum value of the χ^2 among all models, and n is the number of input data fluxes.

To perform the fitting we used the photometric data listed in Table 1, along with fluxes derived from Herschel and ATLASGAL images, visual absorption values in the range 30-40 mag, and distances in the range from 3.2 to 4.2 kpc. The result is shown in the left panel of Fig. 13. Fluxes obtained from Herschel and ATLASGAL were considered upper limits. The best fitting suggests a massive central source of about $10\ M_{\odot}$, a disk mass of $5 \times 10^{-4}\ M_{\odot}$, an envelope mass of $21\ M_{\odot}$, a total luminosity of $5300\ L_{\odot}$, and an age of 1×10^6 yr. With this characteristics, the evolutionary stage of the central source according to Robitaille et al. (2007) would correspond to Stage II (objects with optically thick disks). These results points to a massive central object.

We propose that this source has started modifying its environs by dissociating and then ionizing the nearby material, originating a PDR detected by its emission at $8\ \mu\text{m}$ at the interphase between the ionized and molecular material. It may have contributed to the heating of the dust as revealed by the emission at $24\ \mu\text{m}$. Also, the detection of maser emission towards G341.220-0.213 (see Sect. 1) indicates that star formation is active.

A low emission region is present at RA,Dec.(J2000) = ($16^{\text{h}}52^{\text{m}}22.5^{\text{s}}$, $-44^{\circ}26'40''$), probably linked to a weak IR arc seen slightly to the north of that position.

Panels B and C of Fig. 12 show the emission distribution in the $^{13}\text{CO}(2-1)$ and $\text{C}^{18}\text{O}(2-1)$ lines for the same velocity interval as panel A, while in panel D, the emission corresponds to the CO(2-1) line in a slightly different velocity interval. The emission distribution reveals a molecular clump coincident with the G341.220-0.213. No signs of the arc-like structure are present in the (2-1) transitions, probably due to the lower angular resolution of these lines ($30''$) in comparison with the one of the $^{13}\text{CO}(3-2)$ ($20''$).

The molecular clump detected in the interval $[-44.0, -42.0]\ \text{km s}^{-1}$ coincides with the emission of cold dust as imaged in the far-IR by LABOCA (AGAL 341.217-00.212) and Herschel (see Fig. 4), indicating that gas and dust are well mixed in the region.

The analysis of the data cubes allows us to identify molecular gas associated with G341.220-0.213 in the velocity interval from $-46.5\ \text{km s}^{-1}$ to $-40.2\ \text{km s}^{-1}$.

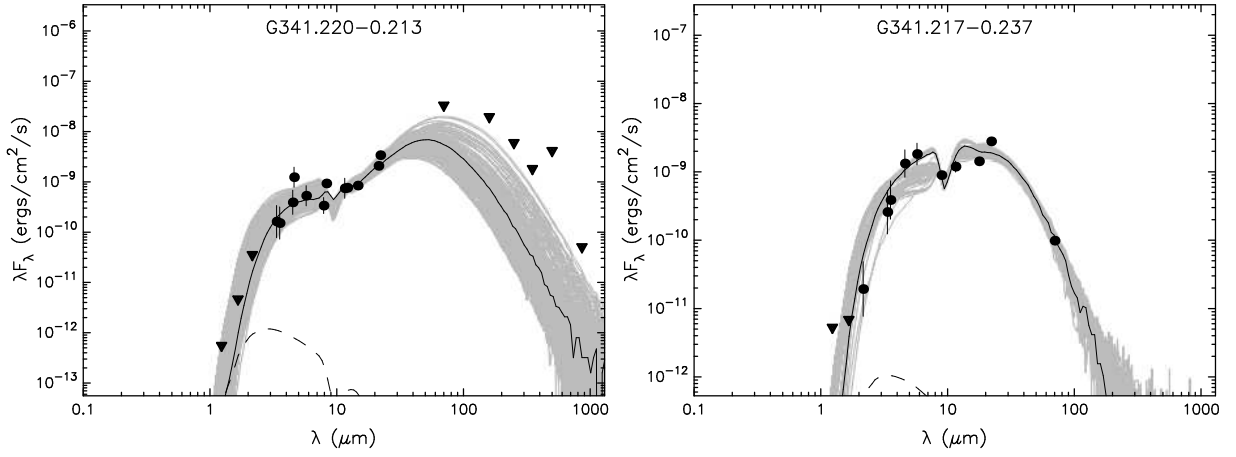


Fig. 13. *Left panel:* SED of YSOs from Table 1 in G341.220-0.213. Input data are indicated by filled circles. The triangles indicate upper limits. The black line corresponds to the best fitting. The fittings which obey Eq. 1 appear indicated by gray lines. The dashed line shows the emission of the stellar photosphere including foreground interstellar extinction. *Right panel:* SED of source #43 from Table 1 in G341.217-0.237.

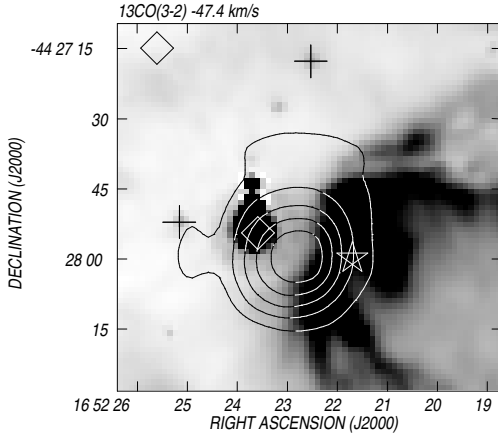


Fig. 15. Overlay of the $C^{13}O(3-2)$ emission distribution at -47.4 km s^{-1} (in contours) and the emission at $8 \mu\text{m}$ (in grayscale) showing the molecular clump at the interfase between G341.217-0.237 and the S 24 bubble. Contours are from 3 K to 6 K (T_{mb}), in steps of 1 K. The symbols have the same meaning as in Fig. 12.

7.2. The S 24 HII region

The upper left panel of Fig. 14 shows the $^{13}CO(3-2)$ emission distribution at -43.2 km s^{-1} in grayscale and contours, while the upper right panel displays an overlay of the same CO contours and the emission at $8 \mu\text{m}$. The middle and bottom panels show the emission at the same velocity for the $^{13}CO(2-1)$ and $C^{18}O(2-1)$ lines, respectively.

The emission at this velocity reveals a complete molecular shell encircling the S24 bubble. The strongest emission regions of this molecular shell encircle the brightest sections of S 24 as seen at $8 \mu\text{m}$. The shell appears open towards RA,Dec.(J2000) = $(16^h52^m19^s, -44^\circ28'30'')$. The emission in the western part of the shell coincides with the IRDC SDC341.194-0.221, which borders this section of the bubble. The molecular shell is present in the interval from -46 km s^{-1} to -41.5 km s^{-1} .

As shown in Fig.11, in the velocity interval from -46.5 km s^{-1} to -43.5 km s^{-1} the molecular gas borders the eastern, northern and western sections of S 24. Molecular gas at these velocities coincides with cold dust detected in the far IR at $\lambda >$

$160 \mu\text{m}$, as shown in Figs. 2 and 4. Molecular shells have been found around many IR dust bubbles, in particular those identified as HII regions (e.g. Petriella et al. 2010; Pomarès et al. 2009; Deharveng et al. 2010). The presence of CO in the HII region interior suggests that the shell corresponds to a three-dimensional structure. This shell might be expanding at 2-3 km s^{-1} . In this case, the emission detected towards the interior of the region would belong to the approaching and receding sections of the shell.

Three YSO candidates are projected onto the S 24 bubble: one MYSO (# 1 in Table 1), and two WISE sources identified as Class II (# 35 and # 36).

Also, a number of YSOs coincide in position with the molecular shell, suggesting that star formation is active in the environs of the bubble.

Two YSOs appear projected onto the IRDC SDC341.194-0.221. They do not coincide with the spot of maser emission described in Sect. 1 projected onto this IRDC.

In addition to these YSO candidates, three stars were able to be identified in the 2MASS catalog in the region under study. These stars are indicated as green asterisks in the [H- K_s , J-H] and [H- K_s , K_s] diagrams of Fig. 3. In particular, 2MASS J17502070-4428012 is projected inside the bubble at RA,Dec.(J2000) = $(16^h52^m20.7^s, -44^\circ28'1''.2)$. Its locus in the CC- and CM diagrams ($H-K_s = 1.19 \text{ mag}$, $J-H = 2.18 \text{ mag}$, and $K_s = 10.94 \text{ mag}$) is indicative of a massive star with an optical absorption $A_V \approx 30 \text{ mag}$. Although more studies are necessary, this star might be responsible for dissociating and ionizing the gas, creating the observed PDR at $8 \mu\text{m}$.

7.3. The interfase between S 24 and G341.217-0.237

As described in Sect. 6, a bright molecular clump appears projected onto the interfase between G341.217-0.237 and S 24 at RA,Dec.(J2000) = $(16^h52^m23^s, -44^\circ28')$. Figure 15 displays an enlargement of the region of the clump showing the emission in the $C^{13}O(3-2)$ line at -47.4 km s^{-1} (in contours) and the $8 \mu\text{m}$ image in grayscale. The peak CO emission is coincident with the interfase between the two sources. The anticorrelation of the CO and IR emissions strongly suggests that the molecular clump has modeled the eastern border of the PDR in the HII region.

These facts suggest that S 24 and G341.217-0.237 are interacting with the molecular clump. The molecular clump coincides

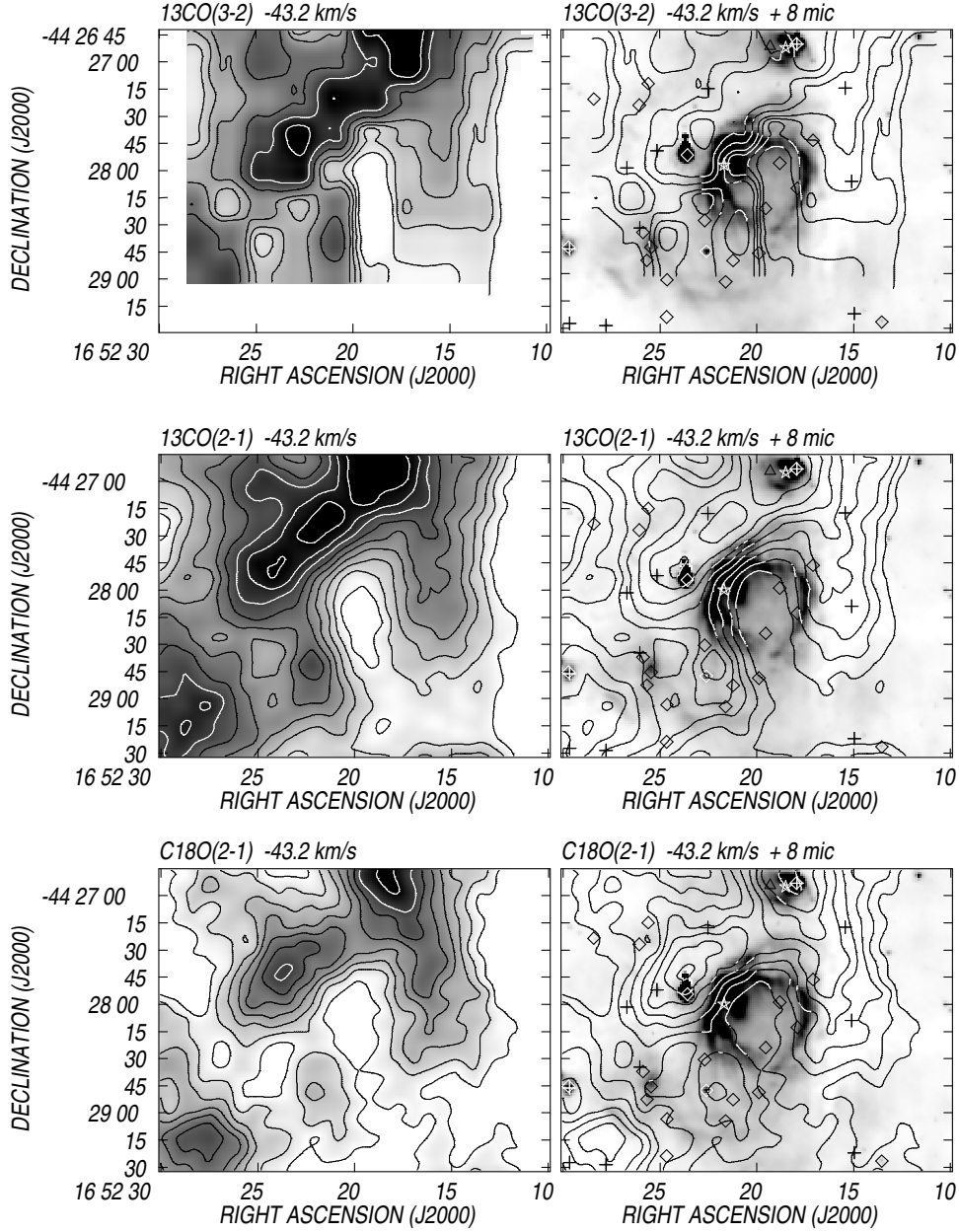


Fig. 14. *Upper panels:* Left: $^{13}\text{CO}(3-2)$ emission distribution at -43.2 km s^{-1} showing the molecular envelope around the S 24 bubble. Contours are 3.0 K to 6.0 K (T_{mb}), in steps of 1.0 K; 8.0 K, 10.0 K, and 12.0 K. Right: Overlay of the same contours of the left panel and the IRAC emission at $8 \mu\text{m}$. The symbols have the same meaning as in Fig. 12. *Middle panels:* Left: $^{13}\text{CO}(2-1)$ emission distribution at -43.2 km s^{-1} . Contours are from 4.0 K to 12.0 K (T_{mb}), in steps of 1.0 K. Right: Overlay of the same contours of the left panel and the IRAC emission at $8 \mu\text{m}$. *Bottom panels:* Left: $\text{C}^{18}\text{O}(2-1)$ emission distribution at -43.2 km s^{-1} . Contours are from 1.0 K to 4.0 K (T_{mb}), in steps of 0.5 K, and 5 K. Right: Overlay of the same contours of the left panel and the IRAC emission at $8 \mu\text{m}$.

with emission at $870 \mu\text{m}$ and in the Herschel bands at 250 and $350 \mu\text{m}$.

The YSO candidate # 43, classified as Class I, coincides with G341.217-0.237. The SED corresponding to this source is shown in the right panel of Fig. 13. To perform the fitting we used the photometric data listed in Table 1, and the flux derived from the image at $70 \mu\text{m}$. Herschel fluxes at larger wavelengths include a significant part of the S 24 bubble and were not used for the SED. Visual absorption is in the range 30-50 mag, and distances from 3.2 to 4.2 kpc. The best fitting corresponds to a central source of about $15 M_{\odot}$, a disk mass of $8 \times 10^{-3} M_{\odot}$, an envelope mass of $1.1 \times 10^{-5} M_{\odot}$, a total luminosity of $22000 L_{\odot}$, and an

age of $1.3 \times 10^6 \text{ yr}$. According to this fitting, the object is probably in Stage III (objects with optically thin disks). However, as pointed out by Deharveng et al. (2012), Offner et al. (2012), and Robitaille (2008), these results should be taken with caution. The presence of emission at $24 \mu\text{m}$ coincident with G341.217-0.237 suggests that the ionizing photons from the massive source are heating the dust and probably dissociating and ionizing the molecular gas.

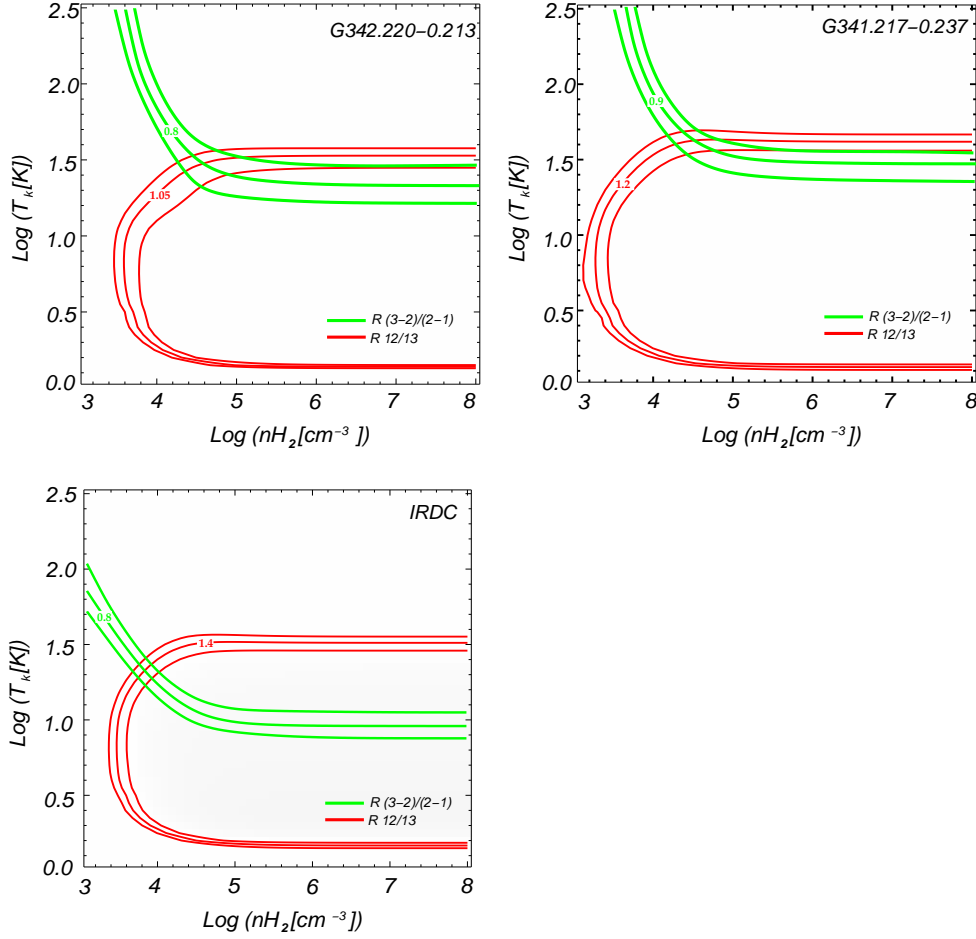


Fig. 16. LVG plots for G341.220-0.213, G341.217-0.237, and the IRDC SDC341.194-0.221. Green lines mark the solutions for the ratios $^{13}\text{CO}(3-2)/^{13}\text{CO}(2-1)$, while red lines, for the ratios $^{13}\text{CO}(2-1)/\text{CO}(2-1)$. Central lines correspond to the observed ratios. Outer lines indicate $\sim 10\%$ calibrations uncertainties.

8. The parameters of the molecular gas

The molecular mass linked to G341.220-0.213, the clump at the interphase between G341.217-0.237 and S 24, and the S 24 HII region, and the molecular mass in the whole region were estimated from the emission in the $J=2 \rightarrow 1$ line. The derived parameters are listed in Table 8.

Assuming Local Thermodynamic Equilibrium (LTE) conditions and that the emission in the $\text{CO}(2-1)$ line is optically thick, we derived the excitation temperature T_{exc} . The optical depth τ_{13} was obtained from the $^{13}\text{CO}(2-1)$ line using the excitation temperature of the $\text{CO}(2-1)$ line and the expression

$$\tau_{13} = -\ln \left[1 - \frac{T_{mb}(^{13}\text{CO})}{T_{13}^*} \left[\left(e^{\frac{T_{13}^*}{T_{exc}}} - 1 \right)^{-1} - f(T_{bg}) \right]^{-1} \right] \quad (4)$$

where $T_{13}^* = h\nu_{13}/k$, ν_{13} the frequency of the $^{13}\text{CO}(2-1)$ line, $f(T_{bg}) = \left[e^{T_{13}^*/T_{bg}} - 1 \right]^{-1}$, and $T_{bg} = 2.7$ K. Assuming LTE, the ^{13}CO column density, $N_{tot}(^{13}\text{CO})$, can be estimated from the $^{13}\text{CO}(2-1)$ line data following

$$N_{tot}(^{13}\text{CO}) = 3.2 \times 10^{14} \left[\frac{e^{T_{13}^*/T_{exc}}}{1 - e^{-T_{13}^*/T_{exc}}} \right] T_{exc} \int \tau^{13} dv \text{ (cm}^{-2}\text{)} \quad (5)$$

The integral of Eq. 5 can be approximated by

$$T_{exc} \int \tau^{13} dv \approx \frac{\tau^{13}}{1 - e^{-\tau^{13}}} \int T_{mb} dv. \quad (6)$$

This approximation helps to eliminate to some extent optical depth effects and is good within 15% for $\tau < 2$ (Rohlfs & Wilson 2004). Bearing in mind the τ_{13} -values listed in Table 2, it is appropriate for our region. Then, the molecular mass was calculated using

$$M(\text{H}_2) = (m_{sun})^{-1} \mu m_H A N(\text{H}_2) d^2 \quad (M_\odot) \quad (7)$$

where m_{sun} is the solar mass ($\sim 2 \times 10^{33}$ g), μ is the mean molecular weight, which is assumed to be equal to 2.76 after allowance of a relative helium abundance of 25% by mass (Yamaguchi et al. 1999), m_H is the hydrogen atom mass ($\sim 1.67 \times 10^{-24}$ g), A is the area in the plane of the sky of the CO emission, d is the adopted distance expressed in cm, and $N(\text{H}_2)$ is the H_2 column density, obtained using an abundance $N(\text{H}_2) / N(^{13}\text{CO}) = 5 \times 10^5$ (Dickman 1978). Uncertainties in molecular masses and ambient densities are about 50% and 70%, respectively, and originates mainly in distance uncertainties and optically thick emission in the $^{13}\text{CO}(2-1)$ line.

To explore more robustly the issues of temperature and density on G341.220-0.213 and G341.217-0.237 we performed a large velocity gradient (LVG) analysis Scoville & Solomon 1973; Goldreich & Kwan 1974) for radiative transfer of molecular emission lines. We use the *lvgr* task implemented as part of the MIRIAD⁵ package of SMA. For a given column density, this program estimates the line radiation temperature of a molecular

⁵ <http://www.cfa.harvard.edu/sma/miriad/packages/>

Table 2. Molecular gas parameters

	$I(^{13}\text{CO})$ [K km s ⁻¹]	T_{exc}	$\tau_{^{13}\text{CO}}$ [K]	R ['' = pc]	$N(^{13}\text{CO})$ [10 ¹⁶ cm ⁻²]	$N(\text{H}_2)$ [10 ²² cm ⁻²]	M_{mol} [M _⊙]	n_{H_2} [10 ⁴ cm ⁻³]
G341.220-0.213	52.3	19.1	1.95	27 = 0.44	14.6	7.3	1550	6.6
Interfase G341.217-0.237/S24	18.9	21.0	1.65	10 = 0.16	5.2	2.6	470	41.6
S 24-shell	34.4	16.8	1.12	48 = 0.77	7.3	3.6	3100	2.5
Whole region	32.4	16.1	1.14	114 = 1.8	7.0	3.5	10300	0.59

transition as a function of the kinetic temperature (T_k) and the H_2 volume density (n_{H_2}). We generated 50 × 50 model grids for the $^{13}\text{CO}(3-2)$, $^{13}\text{CO}(2-1)$, and $\text{CO}(2-1)$ lines with T_k in the range 1-300 K and n_{H_2} with the range 1×10^3 to 1×10^8 cm⁻³. The input column densities of CO and ^{13}CO were estimated from the dust-derived column density measured from the 870 μm emission in each region, and assuming relative abundances $N(\text{CO})/N(\text{H}_2) = 1 \times 10^{-4}$ and $N(^{13}\text{CO})/N(\text{H}_2) = 2 \times 10^{-6}$ (Dickman 1978). The same procedure was applied to the IRDC SDC341.194-0.221, for which we have not derived molecular mass and ambient density since its molecular emission is included in the S 24 molecular shell.

Fig.16 shows the solutions for G341.220-0.213, G341.217-0.237, and the IRDC. They indicate that kinetic temperatures in the IRDC are about 20 K, not different than derived in other IRDC (Egan et al. 1998), and not much higher than typical temperatures of molecular gas without an extra heat source other than interstellar radiation field. The volume density of the IRDC is about 10⁴ cm⁻³. For the case of G341.220-0.213, G341.217-0.237, their temperatures are a bit higher (~ 30 - 40 K), not surprising given that they are active star-forming regions (see Sect. 7). Regarding their volume densities, they are less well constrained but values higher than 4×10^4 cm⁻³ are inferred from the plots.

An inspection of Table 2 shows that molecular gas densities are in the range 10⁴-10⁵ for particular regions including the shell around the S 24 HII region. Masses derived from molecular data are compatible, within errors, with those obtained from the emission at 870 μm, assuming a gas-to-dust ratio equal to 100. Additionally, molecular ambient densities are compatible with values derived from LVG analysis. The large difference for G341.217-0.237 arises in the fact that the mass estimate from molecular emission corresponds only to the emission at the interface between G341.217-0.237 and the S 24 HII region. The ambient density obtained by distributing the total molecular mass in the whole observed region is high (5900 cm⁻³), indicating that G341.220-0.213, G341.217-0.237 and S 24 are evolving in a high density ambient medium.

The high opacity estimated for G341.220-0.213 is not surprising bearing in mind the high column density of this source.

9. Triggered star formation scenario in S 24?

We have found evidences for ongoing star formation in the dense molecular envelope encircling the S 24 HII region. Have these YSOs been triggered through the *collect and collapse* (CC) mechanism? To answer this question we can apply the analytical model by Whitworth et al. (1994). For the case of HII regions, the model predicts the age of the HII region at which the fragmentation occurs (the fragmentation time scale), t_{frag} , the size of the HII region at that moment, R_{frag} , the mass of the fragments, M_{frag} , and their separation along the compressed layer, r_{frag} . The parameters required to derive these quantities are the UV photon flux of the exciting star, N_{Ly} , the ambient density of

the surrounding medium into which the HII region is evolving, n_0 , and the isothermal sound speed in the shocked gas, a_s .

Since the exciting star is unknown, we took into account a large range of spectral types, i.e. from O5V to O9V stars, with UV fluxes in the range $N_{Ly} = (18-0.8) \times 10^{48}$ s⁻¹ (Martins et al. 2002). Using the mean H_2 ambient density $n_{\text{H}_2} = 5900$ cm⁻³ (see Table 2), and $a_s = 0.2-0.6$ km s⁻¹, we obtained $t_{frag} = (6.6-8.8) \times 10^5$ yr, $R_{frag} = 1.8-2.3$ pc, $M_{frag} = 22-29$ M_⊙, and, $r_{frag} = 0.5-0.4$ pc.

The dynamical age of the HII region can be estimated using the equation (Dyson & Williams 1997)

$$t_{dyn} = \frac{4R_S}{7c_s} \left[\left(\frac{R}{R_S} \right)^{7/4} - 1 \right] \quad (8)$$

where R_S is the original Strömberg radius, equal to 0.09-0.25 pc for the adopted spectral types, and c_s is the sound velocity in the ionized gas. Derived dynamical ages span the range $(9-43) \times 10^3$ yr. We find that the dynamical age is smaller than the fragmentation time scale t_{frag} for the adopted ambient density. The comparison of these two quantities does not support a *collect and collapse* process, which is a relatively slow process, for the triggering of star formation in the envelope. An RDI scenario could be investigated, however evidences of this process (such the presence of pillars) appear to be absent. Very probably, the compact HII region is too young for triggering to have begun.

10. Conclusions

Based on the molecular emission in the $\text{CO}(2-1)$, $^{13}\text{CO}(2-1)$, $\text{C}^{18}\text{O}(2-1)$, and $^{13}\text{CO}(3-2)$ lines, obtained with the APEX telescope, and images in the near-, mid-, and far-IR from IRAC-Glimpse, Herschel, and ATLASGAL we performed a multi-wavelength analysis of the infrared dust bubble S 24, and two extended IR sources (G341.220-0.213 and G341.217-0.237) located in its environs. The region coincides with the IRAS point source 16487-4423, classified as UCHII. We also investigated the presence of YSO candidates in the region using the MSX, 2MASS, Spitzer, and WISE catalogs.

The molecular emission distribution shows that gas linked to the S 24 bubble, G341.220-0.213, and G341.217-0.237 has velocities between -48.0 km s⁻¹ and -40.0 km s⁻¹, compatible with a kinematical distance of 3.7 kpc previously adopted for the region.

The gas distribution reveals a shell-like molecular structure of ~0.8 pc in radius detected in the velocity interval from -46 km s⁻¹ to -41.5 km s⁻¹, encircling the S 24 bubble. A cold dust counterpart of this shell is detected at wavelengths larger than 160 μm, i.e. in the LABOCA and SPIRE images. On the contrary, PACS emission at 70 μm, as well as MIPS emission at 24 μm from warm dust appear projected inside the bubble. Dust temperatures derived from the emission at 70 and 160 μm are in the range 26 to 60 K, which the higher values closer to the

center of the bubble. The detection of radio continuum emission and the presence of warm dust indicates the existence of exciting sources and that the bubble is a compact HII region. We estimated a molecular gas and H_2 ambient density in the shell of $3100 M_{\odot}$ and $2.5 \times 10^4 \text{ cm}^{-3}$. A search for excitation sources allows the identification of a massive star candidate projected onto the HII region, which would provide the ultraviolet photons to heat the gas and dissociate and ionize the gas. A number of YSO candidates appear projected onto the molecular shell.

Part of the molecular gas bordering the S 24 bubble coincides with the extended IRDC SDC341.194-0.221, for which we derived a kinetic temperature of about 20 K and a volume density of 10^4 cm^{-3} , based on LVG analysis.

As regards G341.220-0.213, which resembles a horseshoe open towards the east, the $^{13}\text{CO}(3-2)$ line emission allowed to detect an arc-like structure with velocities in the range -43.8 km s^{-1} to -42.0 km s^{-1} , encircling the brightest sections of the IR source. The morphology indicates that the molecular gas is interacting with the IR source. A dust counterpart is detected in the Herschel (SPIRE and PACS) and LABOCA images. The spectral energy distribution constructed using Herschel and ATLASGAL fluxes allows to derive a dust temperature of 28 ± 1 K. A molecular mass of $1550 M_{\odot}$ is linked to this source, compatible with the mass derived from ATLASGAL. The H_2 ambient density amounts to $6.6 \times 10^4 \text{ cm}^{-3}$, in agreement with the ambient density value estimated from LVG analysis. A number of IR point sources having characteristics of YSO coincide with this region, which along with the presence of maser emission indicates that star formation is active. The SED for the derived fluxes suggests the presence of a massive central source of $10 M_{\odot}$, which would be responsible for heating the dust and dissociating the molecular gas.

G341.217-0.237 also coincides with molecular gas and cold dust. The line emission allowed the detection of a molecular clump present at the interface between the S 24 HII region and G341.217-0.237, shapping the eastern border of the IR bubble. A high ambient density ($4.2 \times 10^5 \text{ cm}^{-3}$) was estimated for the clump.

The total mass of molecular gas in the region and the H_2 ambient density amount to $10300 M_{\odot}$ and 5900 cm^{-3} , indicating that G341.220-0.213, G341.217-0.237, and the S 24 HII region are evolving in a high density region.

Finally, we investigated if a *collect and collapse* scenario can explain the presence of YSOs in the dense envelope around the S 24 HII region. We conclude that neither this mechanism nor the RDI process seem to occur in this region. Very probably, the HII region is too young for triggering to have begun.

Acknowledgements. The ATLASGAL project is a collaboration between the Max-Planck-Gesellschaft, the European Southern Observatory (ESO) and the Universidad de Chile. C.E.C. acknowledges the kind hospitality of M. Rubio and her family during her stay in Chile. L.C. acknowledges support from DIULS. V.F. acknowledges support from ESO-Chile Joint Committee and DIULS and would like to thank Ivan Valtchanov, Bruno Altieri, and Luca Conversi for their support and valuable assistance in Herschel data processing. V.F. also acknowledges support from the Faculty of the European Space Astronomy Centre (ESAC). This project was partially financed by CONICET of Argentina under project PIP 0356, UNLP under project 11/G120, and CONICYT of Chile through FONDECYT grant No. 1140839. This work is based [in part] on observations made with the Spitzer Space Telescope, which was operated by the Jet Propulsion Laboratory, California Institute of Technology under a contract with NASA. This publication makes use of data products from the Two Micron All Sky Survey, which is a joint project of the University of Massachusetts and the Infrared Processing and Analysis Center/California Institute of Technology, funded by the National Aeronautics and Space Administration and the National Science Foundation. The MSX mission was sponsored by the Ballistic Missile Defense Organization (BMDO).

References

- Alexander, M. J., Kobulnicky, H. A., Kerton, C. R., & Arvidsson, K. 2013, *ApJ*, 770, 1
- Allen, L. E., Calvet, N., D'Alessio, P., et al. 2004, *ApJS*, 154, 363
- Anderson, L. D., Zavagno, A., Deharveng, L., et al. 2012, *A&A*, 542, A10
- Bayandina, O. S., Val'Tts, I. E., & Larionov, G. M. 2012, *VizieR Online Data Catalog*, 808, 90611
- Benjamin, R. A., Churchwell, E., Babler, B. L., et al. 2003, *PASP*, 115, 953
- Bernard, J.-P., Paradis, D., Marshall, D. J., et al. 2010, *A&A*, 518, L88
- Brand, J. & Blitz, L. 1993, *A&A*, 275, 67
- Bronfman, L., Nyman, L.-A., & May, J. 1996, *A&AS*, 115, 81
- Cappa, C. E., Firpo, G. A., R., Rubio, M., & Vasquez, J. 2013, *Boletín de la Asociación Argentina de Astronomía La Plata Argentina*, 56, 311
- Carey, S. J., Noriega-Crespo, A., Price, S. D., et al. 2005, in *Bulletin of the American Astronomical Society*, Vol. 37, American Astronomical Society Meeting Abstracts, 1252
- Caswell, J. L., Fuller, G. A., Green, J. A., et al. 2010, *MNRAS*, 404, 1029
- Churchwell, E., Povich, M. S., Allen, D., et al. 2006, *ApJ*, 649, 759
- Churchwell, E., Watson, D. F., Povich, M. S., et al. 2007, *ApJ*, 670, 428
- Contreras, Y., Schuller, F., Urquhart, J. S., et al. 2013, *A&A*, 549, A45
- Cutri, R. M., Skrutskie, M. F., van Dyk, S., et al. 2003, *2MASS All Sky Catalog of point sources*.
- Cyganowski, C. J., Whitney, B. A., Holden, E., et al. 2008, *AJ*, 136, 2391
- Deharveng, L., Schuller, F., Anderson, L. D., et al. 2010, *A&A*, 523, A6
- Deharveng, L., Zavagno, A., Anderson, L. D., et al. 2012, *A&A*, 546, A74
- Dewangan, L. K. & Ojha, D. K. 2013, *MNRAS*, 429, 1386
- Dickman, R. L. 1978, *ApJS*, 37, 407
- Dyson, J. E. & Williams, D. A. 1997, *The physics of the interstellar medium*, ed. Dyson, J. E. & Williams, D. A.
- Egan, M. P., Shipman, R. F., Price, S. D., et al. 1998, *ApJ*, 494, L199
- Fazio, G. G., Hora, J. L., Allen, L. E., et al. 2004, *ApJS*, 154, 10
- Garay, G. & Lizano, S. 1999, *PASP*, 111, 1049
- Goldreich, P. & Kwan, J. 1974, *ApJ*, 189, 441
- Griffin, M. J., Abergel, A., Abreu, A., et al. 2010, *A&A*, 518, L3
- Haverkorn, M., Gaensler, B. M., McClure-Griffiths, N. M., Dickey, J. M., & Green, A. J. 2006, *ApJS*, 167, 230
- Henning, T., Feldt, M., Stecklum, B., & Klein, R. 2001, *A&A*, 370, 100
- Hildebrand, R. H. 1983, *QJRAS*, 24, 267
- Koenig, X. P., Leisawitz, D. T., Benford, D. J., et al. 2012, *ApJ*, 744, 130
- Larionov, G. M. & Val'tts, I. E. 2008, *VizieR Online Data Catalog*, 808, 40839
- Lumsden, S. L., Hoare, M. G., Oudmaijer, R. D., & Richards, D. 2002, *MNRAS*, 336, 621
- Martins, F., Schaerer, D., & Hillier, D. J. 2002, *A&A*, 382, 999
- Mezger, P. G. & Henderson, A. P. 1967, *ApJ*, 147, 471
- Molinari, S., Swinyard, B., Bally, J., et al. 2010, *A&A*, 518, L100
- Murphy, T., Mauch, T., Green, A., et al. 2007, *MNRAS*, 382, 382
- Offner, S. S. R., Robitaille, T. P., Hansen, C. E., McKee, C. F., & Klein, R. I. 2012, *ApJ*, 753, 98
- Ohlendorf, H., Preibisch, T., Gaczkowski, B., et al. 2013, *A&A*, 552, A14
- Ossenkopf, V. & Henning, T. 1994, *A&A*, 291, 943
- Ott, S. 2010, in *Astronomical Society of the Pacific Conference Series*, Vol. 434, *Astronomical Data Analysis Software and Systems XIX*, ed. Y. Mizumoto, K.-I. Morita, & M. Ohishi, 139
- Peretto, N. & Fuller, G. A. 2009, *A&A*, 505, 405
- Peretto, N., Fuller, G. A., Plume, R., et al. 2010, *A&A*, 518, L98
- Pestalozzi, M. R., Minier, V., & Booth, R. S. 2005, *A&A*, 432, 737
- Petriella, A., Paron, S., & Giacani, E. 2010, *A&A*, 513, A44
- Piat, M., Lagache, G., Bernard, J. P., Giard, M., & Puget, J. L. 2002, *A&A*, 393, 359
- Poglitsch, A., Waelkens, C., Geis, N., et al. 2010, *A&A*, 518, L2
- Pomarès, M., Zavagno, A., Deharveng, L., et al. 2009, *A&A*, 494, 987
- Preibisch, T., Roccatagliata, V., Gaczkowski, B., & Ratzka, T. 2012, *A&A*, 541, A132
- Price, S. D., Egan, M. P., Carey, S. J., Mizuno, D. R., & Kuchar, T. A. 2001, *AJ*, 121, 2819
- Robitaille, T. P. 2008, in *Astronomical Society of the Pacific Conference Series*, Vol. 387, *Massive Star Formation: Observations Confront Theory*, ed. H. Beuther, H. Linz, & T. Henning, 290
- Robitaille, T. P., Whitney, B. A., Indebetouw, R., & Wood, K. 2007, *ApJS*, 169, 328
- Rohlfs, K. & Wilson, T. L. 2004, *Tools of Radioastronomy*, ed. Springer-Verlag, Berlin-Heidelberg
- Russeil, D. & Castets, A. 2004, *A&A*, 417, 107
- Schuller, F., Menten, K. M., Contreras, Y., et al. 2009, *A&A*, 504, 415
- Scoville, N. Z. & Solomon, P. M. 1973, *ApJ*, 180, 55
- Siringo, G., Kreyss, E., Kovács, A., et al. 2009, *A&A*, 497, 945
- Urquhart, J. S., Moore, T. J. T., Schuller, F., et al. 2013, *MNRAS*, 431, 1752

Please give a shorter version with: `\authorrunning` and/or `\titilerunning` prior to `\maketitle`

Vasquez, J., Firpo, V., Lpez-Carballo, C., et al. 2015, To be submitted
Vassilev, V., Meledin, D., Lapkin, I., et al. 2008, *A&A*, 490, 1157
Voronkov, M. A., Caswell, J. L., Ellingsen, S. P., Green, J. A., & Breen, S. L.
2014, *MNRAS*, 439, 2584
Walsh, A. J., Purcell, C. R., Longmore, S. N., et al. 2014, *MNRAS*, 442, 2240
Watson, C., Hanspal, U., & Mengistu, A. 2010, *ApJ*, 716, 1478
Watson, C., Povich, M. S., Churchwell, E. B., et al. 2008, *ApJ*, 681, 1341
Whitney, B. A., Indebetouw, R., Babler, B. L., et al. 2004, *ApJS*, 154, 315
Whitworth, A. P., Bhattal, A. S., Chapman, S. J., Disney, M. J., & Turner, J. A.
1994, *MNRAS*, 268, 291
Wood, D. O. S. & Churchwell, E. 1989, *ApJ*, 340, 265
Wright, E. L., Eisenhardt, P. R. M., Mainzer, A. K., et al. 2010, *AJ*, 140, 1868
Yamaguchi, R., Akira, M., & Yasuo, F. 1999, in *Star Formation 1999*, ed.
T. Nakamoto, 383–384