

Basement-involved deformation overprinting thin-skinned deformation in the Pampean flat-slab segment of the southern Central Andes, Argentina

MARIA SILVIA JAPAS^{*†}, GUILLERMO HÉCTOR RÉ^{*}, SEBASTIÁN ORIOLO[‡]
& JUAN FRANCISCO VILAS^{*}

^{*}IGeBA, Universidad de Buenos Aires – CONICET, Departamento de Ciencias Geológicas, Pabellón II, Ciudad Universitaria (1428) Ciudad Autónoma de Buenos Aires, Argentina

[‡]Geoscience Centre, Georg-August-Universität Göttingen, Goldschmidtstraße 3, 37077 Göttingen, Germany

(Received 2 November 2015; accepted 20 May 2016; first published online 25 July 2016)

Abstract – In the southern Central Andes, the Andean foreland was deformed due to Neogene shallowing of the Nazca slab beneath the South America plate. In this 27–33°S Pampean flat-slab segment, the N-trending Argentine Precordillera transpressional fold-and-thrust belt and the Sierras Pampeanas broken foreland developed as a consequence of inward migration of the orogenic front. At 28°S, a NNE-trending westward-dipping, thick Neogene synorogenic sequence is exposed in the Sierra de los Colorados, which shares deformation features of the Precordillera and the Sierras Pampeanas. Integration of new structural and kinematic data and available structural, kinematic, geophysical and palaeomagnetic information allows consideration of the Sierra de los Colorados area as part of the northern sector of the Precordillera during the middle Neogene. At *c.* 9 Ma, basement block exhumation started with the uplift of the Sierra de Umango-Espinal that was triggered by deformation along the NE-trending Tucumán oblique belt. This stage marked the beginning of compartmentalization of the incipiently deformed Vinchina foreland. Since *c.* 6.8–6.1 Ma, basement block uplift linked to the Miranda–Chepes and Valle Fértil NNW-trending sinistral transpressional belts, as well as kinking of the Neogene sequence by localized WNW-striking cross-strike structures, resulted in multiple segmentation that produced a complex mosaic of basement-block pieces. The overprint of these regional, basement-involved, oblique, brittle–ductile transpressional and cross-strike megazones could be related to high interplate coupling. Localized mechanical and rheological changes introduced by magmatism favoured this thick-skinned deformation overprint.

Keywords: Precordillera, Sierras Pampeanas, Sierra de Famatina, Sierra de los Colorados, Neogene, oblique brittle–ductile megashear zones, kinematics.

1. Introduction

Since the late Early Miocene, significant geodynamic changes have affected the 27–33°S Andean segment as a consequence of the shallowing of the Nazca plate (Ramos, Cristallini & Perez, 2002 and references therein; Fig. 1a). Deformation migrated inland, resulting in Andean foreland basin exhumation (Argentine Precordillera) and fragmentation by major block uplift (Sierras Pampeanas and Famatina broken foreland; Isacks *et al.* 1982; Jordan *et al.* 1983; Jordan & Allmendinger, 1986; Kay & Abbruzzi, 1996; Ramos, Cristallini & Perez, 2002). Declining arc-magmatism also migrated towards the foreland and was emplaced along WNW-trending corridors (Urbina & Sruoga, 2009; Japas, Urbina & Sruoga, 2010; Oriolo *et al.* 2014).

Regional transpressional deformation played a main role during Neogene deformation of the Argentine Precordillera (Japas, 1998; Ré, Japas & Barredo, 2001; Siame *et al.* 2005; Álvarez-Marrón *et al.* 2006; Oriolo

et al. 2014, 2015; Japas *et al.* 2015) and the Sierras Pampeanas and Famatina broken foreland (Rossello *et al.* 1996; Japas, 1998; Ré, Japas & Barredo, 2001). Transpression was controlled by oblique convergence (N76°E defined by DeMets *et al.* 1990, onto an approximately N–S margin trend) affecting a strongly anisotropic upper plate (Rossello *et al.* 1996; Ré, Japas & Barredo, 2001; Japas, Ré & Barredo, 2002; Japas & Ré, 2012a, b; Oriolo *et al.* 2014, 2015; Perucca & Ruiz, 2014; Japas *et al.* 2015; Ortiz *et al.* 2015). These pre-Neogene major inherited structures in the upper plate (Alvarado, Beck & Zandt, 2007; Gans *et al.* 2011; Ammirati *et al.* 2013) resulted from a long history of accretion and amalgamation of different terranes (Ramos, 1999; Ramos, Cristallini & Perez, 2002).

The Argentina Precordillera (hereafter referred to as Precordillera) comprises a nearly N–S-trending fold-and-thrust belt (Baldis & Chebli, 1969; Ortiz & Zambrano, 1981; Baldis *et al.* 1982; Fig. 1). It consists of an E-verging thin-skinned domain (Western and Central Precordillera) and a W-verging thick-skinned domain (Eastern Precordillera; Baldis & Chebli, 1969; Ortiz & Zambrano, 1981; Baldis *et al.* 1982; Fig. 1b),

[†]Author for correspondence: msjapas@gl.fcen.uba.ar

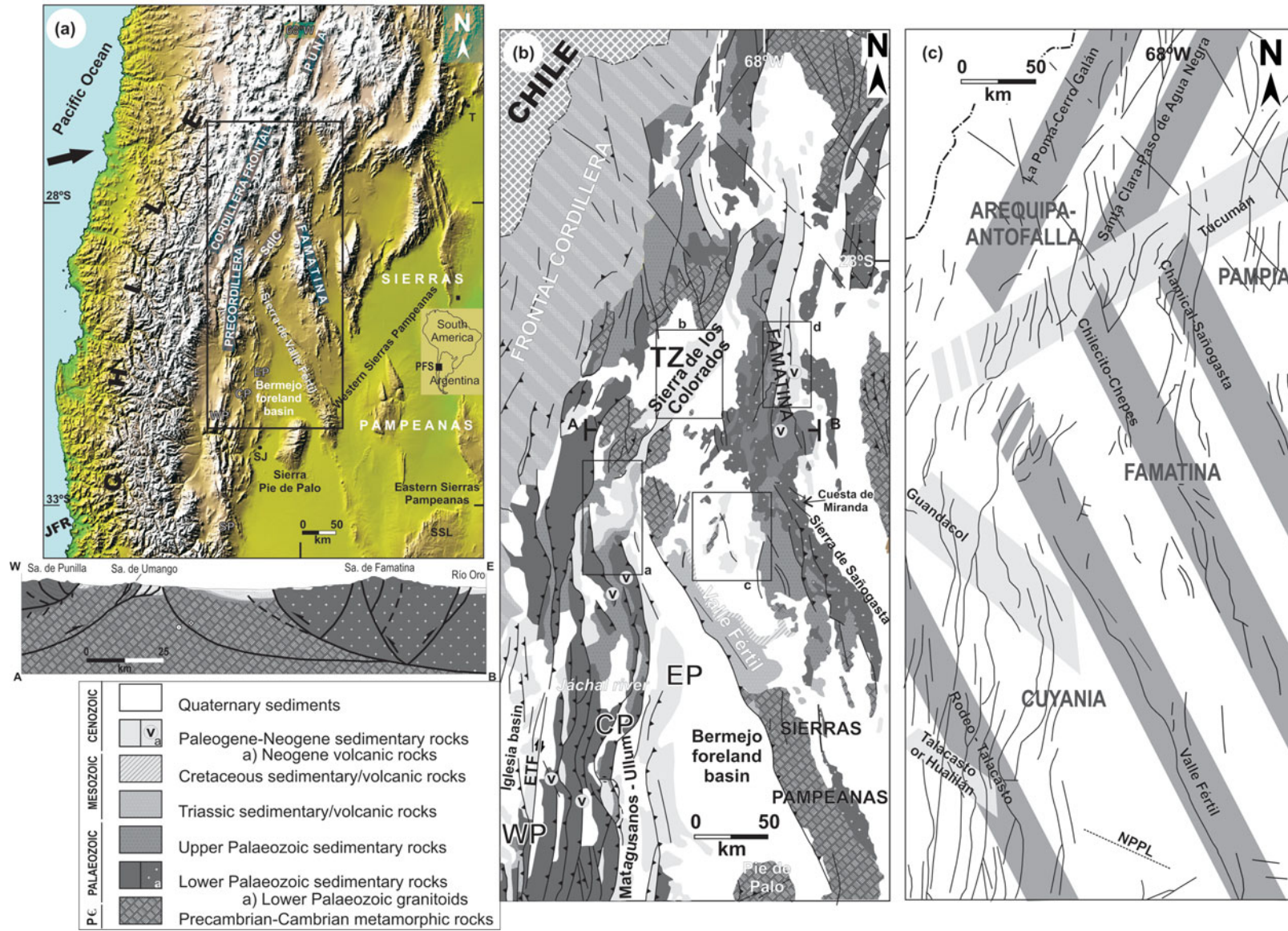


Figure 1. (a) (Colour online) The Sierra de los Colorados area (SdLC) in the regional context, southern Central Andes (Shuttle Radar Topography Mission image). PFS: Pampean Flat-Slab (27–33° S). SJ: San Juan city; T: Tucumán city. WP: Western Precordillera; CP: Central Precordillera; EP: Eastern Precordillera; SP: Southern Precordillera; ETF: El Tigre Fault; SSL: Sierra de San Luis. Courtesy NASA / Jet Propulsion Laboratory, California Institute of Technology: <http://www2.jpl.nasa.gov/srtm/southAmerica.htm#PIA03388>. (b) Simplified geological map from the area (after Caminos *et al.* 1993; Ragona *et al.* 1995; Zapata & Allmendinger, 1996; SEGEMAR, unpub. data, 2012, <http://sig.segemar.gov.ar>), and cross-section A–B (after Fauqué *et al.* 2016). Abbreviations as for Figure 1a. Rectangles indicated with letters a, b, c and d refer to the regions whose Neogene stratigraphy is summarized in Table 1 (northern Central Precordillera, Transitional zone, western Sierras Pampeanas and Famatina respectively). (c) Oblique transpressional and transtensional belts (modified from Ré, Japas & Barredo, 2001; Japas, Oriolo & Sruoga, 2012). NPPL: Northern Pie de Palo Lineament. Notice that main NNW-trending belts are coincident with and linked to ancient sutures (the different terranes are shown), recurrently reactivated since the Late Palaeozoic.

with a thick-skinned triangular zone developed in between (Zapata & Allmendinger, 1996). Along-strike segmentation allows to define two more morpho-structural domains: (i) the Southern Precordillera that resulted from inversion and reactivation of Palaeozoic and Triassic NNW-striking major structures (Cortés, Pasini & Yamín, 2005; Cortés *et al.* 2006; Terrizzano *et al.* 2010), and (ii) the thick-skinned Northern Precordillera (28°15'–30° S; Cortés *et al.* 2014; Fig. 1b). In the Western and Central Precordillera, a first stage of Miocene thin-skinned highly partitioned transpressional deformation was followed by deformation along basement-involved WNW-trending transtensional cross-strike structures, and subsequent late Pliocene reactivation of pre-Andean NNW-striking structures. WNW-striking structures controlled the emplacement of the Miocene magmatism during its migration towards the foreland (Oriolo *et al.* 2014). In the case of the Eastern Precordillera, deformation only resulted from the late Pliocene stage (Japas *et al.* 2015).

The broken foreland comprises the Sierras Pampeanas and the Sierra de Famatina systems, part of a distal thick-skinned deformed foreland composed of basement blocks bounded by reactivated, NNW- and N-trending, high-angle reverse faults (Ramos, Cristallini & Perez, 2002; Hilley, Blisniuk & Strecker, 2005; Mortimer *et al.* 2007; Fig. 1a, b). Both regions share a similar Neogene geodynamical setting and basement block structure, differing in their pre-Cenozoic geological record (Petersen & Leanza, 1953). According to Dávila *et al.* (2004), Löbens *et al.* (2011, 2013a, b), Wemmer *et al.* (2011), Bense *et al.* (2013, 2014) and Ortiz *et al.* (2015), some parts of this foreland region underwent significant exhumation prior to widespread Late Miocene deformation.

To the north of the Pampean flat-slab segment of the Central Andes (Fig. 1a, b) the Sierra de los Colorados area shows a Neogene deformation history linked to the Precordillera and the broken foreland. Traditionally it was considered as part of the Sierras Pampeanas (Turner, 1964; Ramos, 1970; Ciccio *et al.* 2011), but recent palaeomagnetic data by G. H. Ré (unpubl. Ph.D. thesis, Univ. de Buenos Aires, 2008) and Japas *et al.* (2015) allowed an early stage of thin-skinned transpressional deformation to be identified. Based on kinematic, structural and geophysical information, and available chronological data, this contribution will focus on the causes and temporal evolution of Mio-Pliocene thick-skinned deformation overprinting late Middle Miocene, thin-skinned structures in the Sierra de los Colorados area. In this two-staged deformation scenario, the significance of oblique transpressional and transtensional megazones in controlling Neogene deformation will also be analysed.

2. Geological setting

2.a. Geological record

In the Precordillera, unexposed basement rocks are considered as Grenvillian (Leveratto, 1968; Abbruzzi,

Kay & Bickford, 1993; Kay, Orrell & Abruzzi, 1996). Palaeozoic rocks record the evolution from a Cambrian–Ordovician passive to a Silurian–Devonian active margin and culminated with a post-collisional history of Carboniferous–Permian active subduction. The Palaeozoic margin was successively deformed during the Middle to Late Ordovician, the Late Devonian and the Early Permian (Famatinian–Ocoyic, Famatinian–Chanic and San Rafael orogenies, respectively). During the Triassic, plate rearrangements resulted in regional rifting. From the inception of the Andean orogeny, this region evolved as part of the Bermejo foreland basin until it began to be deformed at *c.* 19 Ma (Jordan *et al.* 1993; Alonso *et al.* 2011; Table 1).

Pre-Cenozoic stratigraphy of the western Sierras Pampeanas consists of Precambrian to Early Palaeozoic metamorphic and plutonic rocks that represent the deeper parts of the Ordovician Famatinian Orogen. Carboniferous to Permian localized transtensional basin deposits (Fernández Seveso *et al.* 1993; Fernández Seveso & Tankard, 1995) were followed by Triassic – Early Jurassic and Cretaceous rifting sequences (Ramos, 1992; Schmidt *et al.* 1995). The Cenozoic record in the western Sierras Pampeanas in the study area is shown in Table 1.

In the Famatina, pre-Cenozoic rocks comprise a Middle to Late Cambrian metamorphic basement overlain by Early Palaeozoic volcano-sedimentary rocks (Aceñolaza, Millar & Toselli, 1996; Candiani *et al.* 2011), which are intruded by Middle to Late Ordovician igneous bodies resulting from continental-arc magmatism activity (Toselli, Saavedra & Rossi de Toselli, 1996; Rapela *et al.* 1999). Silurian post-orogenic granites were emplaced and deformed during the Late Devonian – Early Palaeozoic Chanic tectonic phase. Late Palaeozoic and Triassic extensional depocentres include more than 4000 m of continental sediments (Fernández Seveso *et al.* 1993). The Cenozoic record comprises *c.* 3500 m of alluvial deposits east of the Sierra de Famatina and also Early Pliocene volcanic rocks (Mogote Río Blanco Formation andesites; see Dávila & Astini, 2007; Zambrano *et al.* 2011; Table 1).

2.b. Regional structure

The main Neogene structure in these regions comprises NNE–NNW-trending thrusts linked to thin-skinned (Precordillera) and thick-skinned (Eastern Precordillera, Sierras Pampeanas and Famatina) deformation (Jordan & Allmendinger, 1986; Allmendinger *et al.* 1990; Cristallini & Ramos, 1995; Zapata & Allmendinger, 1996; Ramos, Cristallini & Perez, 2002). They are controlled and overprinted by localized, oblique- and cross-strike brittle–ductile megashear zones (Japas, 1998; Ré, Japas & Barredo, 2001; Cortés, Pasini & Yamín, 2005; Cortés *et al.* 2006; Japas & Ré, 2012a, b; Oriolo *et al.* 2014; Japas *et al.* 2015).

In the Precordillera, cross-strike and oblique structures consist respectively of WNW-trending sinistral transtensional zones (Guandacol; Talacasto or

Table 1. Cenozoic Stratigraphy of northern Central Precordillera, Sierra de los Colorados, western Sierras Pampeanas and Famatina areas. Data compiled from Malizia, Reynolds & Tabbutt (1995), Dávila & Astini (2007), Limarino, Ciccioi & Marensi (2010), Ciccioi *et al.* (2014), Collo *et al.* (2014) and Fauqué *et al.* (2016).

TIME	UNITS			
	northern Central Precordillera	Sierra de los Colorados	western Sierras Pampeanas	Famatina
Quaternary				
Holocene		Alluvial, colluvial, fluvial, and aeolian deposits		
Pleistocene	L	Santa Florentina Fm.		Santa Florentina Fm.
	E	El Corral Fm.		
Pliocene	L	Toro Negro Fm		
	E			
Neogene	L	Zapallar Fm Vinchina Fm (upper section)	Desencuentro Fm.	El Durazno Fm. & Mogote Rio Blanco Fm.
	M	Vinchina Fm (lower section)	Río Mañero Fm.	Santo Domingo Fm. Del Buey Fm. Del Abra Fm. Del Crestón Fm.
Paleogene	E	Quebrada de la Montosa Fm Vallecito Fm. & Cerro Morado Fm. Puesto La Flecha Fm		
	Oligocene Eocene			

Hualilán; Calingasta or San Juan; Paramillos; Ré, Japas & Barredo, 2001; Japas, Ré & Barredo, 2002; Oriolo *et al.* 2014) and NNW-trending sinistral transpressional belts (Valle Fértil; Rodeo–Talacasto; Mendoza Norte or Barreal–Las Peñas; Río Mendoza–Tupungato; Rossello *et al.* 1996; Ré, Japas & Barredo, 2001; Japas, Ré & Barredo, 2002; Cortés & Cegarra, 2004; Japas *et al.* 2015; Fig. 1c).

In the Sierras Pampeanas, the main cross-strike transensional structures are the NE-trending Tucumán (Mon, 1976) and Catamarca (Rossello *et al.* 1996; Fig. 1c) structures, and the Tertiary Volcanic Belt in the Eastern Sierras Pampeanas (Urbina, Sruoga & Malvicini, 1995, 1997; Sruoga, Urbina & Malvicini, 1996; Sruoga & Urbina, 2008; Urbina & Sruoga, 2009; Japas, Urbina & Sruoga, 2010; Japas *et al.* 2011a, b). The main NNW-trending oblique Andean structures represent reactivation of major Early Palaeozoic structures, as is the case of the NNW-trending Valle Fértil (Rossello *et al.* 1996; Ré, Japas & Barredo, 2000, 2001; Introcaso & Ruiz, 2001; Ortiz *et al.* 2015), Chilecito–Chepes, Chamental–Sañogasta, Cruz del Eje–San Isidro and Rincón–Deán Funes transpressional belts (Ré, Japas & Barredo, 2001; Japas, Ré & Barredo, 2002).

The doubly vergent, NNW- to NNE-trending, high-angle basement thrusts of the Sierra de Famatina (Dávila & Astini, 2002, 2003; Ramos, Cristallini & Perez, 2002; F. M. Dávila, unpub. Ph.D. thesis, Univ. Nacional de Córdoba, 2003; Dávila *et al.* 2004; Candiani *et al.* 2011; Fig. 1) also resulted from reactivation of previous basement mechanical anisotropies (Fig. 1b). Uplift of Sierra de Famatina occurred along a set of reverse faults within the range rather than along a system of faults at the range boundary (de Alba, 1979; Jordan & Allmendinger, 1986). In spite of differences in pre-Cenozoic stratigraphy and structural pattern that includes the range’s highest altitude (6200 m), the Sierra de Famatina was deformed and uplifted at the same time and in a mode equivalent to the Sierras Pampeanas. Main oblique structures affecting the Sierra de Famatina are the NNW-trending Chilecito–Chepes, Chamental–Sañogasta megazones (Ré, Japas & Barredo, 2001; Japas, Ré & Barredo, 2002; Chancaní from Rossello *et al.* 1996), the NNE-trending Santa Clara–Paso del Agua Negra and La Poma–Cerro Galán structures and the NE-trending Tucumán zone (Mon, 1976; Rossello *et al.* 1996; Urreiztieta, 1996; Fig. 1c).

3. Study area

The Sierra de los Colorados is located in La Rioja province, NW Argentina (Fig. 1a, b). Two topographic depressions are placed between this range and the Northern Precordillera to the west, and the Sierra de Famatina to the east. To the N-NE and S-SW, the Sierra de los Colorados is bounded by Sierras Pampeanas basement blocks (Sierra de Toro Negro and Sierra de Umango-Espinal, respectively; Fig. 1b).

As representative of the Neogene Vinchina basin fill, the foreland sequence at the Sierra de los Colorados

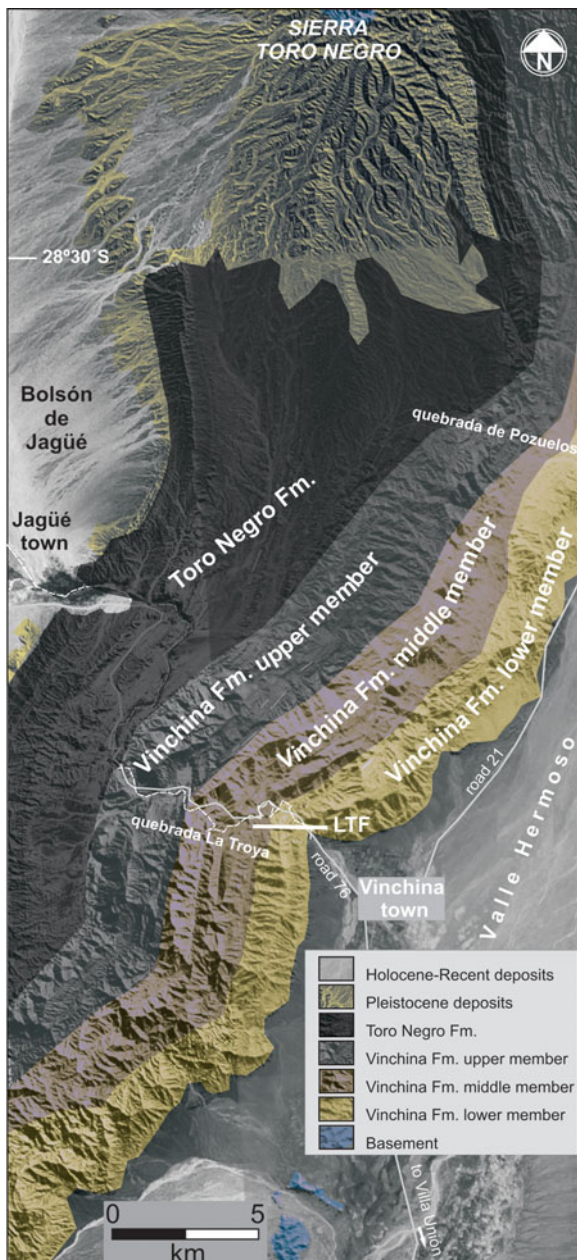


Figure 2. (Colour online) Geological map from the Sierra de los Colorados region (adapted from Marensi *et al.* 2015). LTF: La Troya fault.

comprises a distal to proximal, thick synorogenic, alluvial sedimentary pile (Vinchina and Toro Negro Formations; Turner, 1964; Ramos, 1970; Fig. 2) that was deposited under semi-arid conditions (Tripaldi *et al.* 2001). This Neogene succession reaches an unusually large thickness that was attributed to a combination of flexural subsidence and alternative sublithospheric mechanisms (e.g. dynamic topography; Dávila, Astini & Jordan, 2005; Dávila *et al.* 2007; Dávila, Lithgow-Bertelloni & Giménez, 2010). Approximately 5500 m and *c.* 2000 m of sediments are documented for the Vinchina and Toro Negro Formations respectively in the quebrada de La Troya section. Along-strike thickness increments were also reported (Ramos, 1970; Marensi *et al.* 2015).

The age of the Vinchina Formation rocks was constrained by magnetostratigraphic studies (Reynolds *et al.* 1990; Ré & Barredo, 1993) as well as by zircon fission-track (K. D. Tabbutt, unpub. Master's thesis, 1986) and U–Pb detrital zircon (Collo *et al.* 2011, 2014; Ciccioli, Limarino & Friedman, 2012; Ciccioli *et al.* 2014) ages. In the case of the Vinchina Formation lower member, a maximum sedimentation age of 15.6 ± 0.4 Ma was obtained (U–Pb chemical abrasion thermal ionization mass spectrometry (CA-TIMS) detrital zircon data; Ciccioli *et al.* 2014), whereas a depositional age of 9.24 ± 0.034 Ma was reported for the upper member based on U–Pb CA-TIMS data from volcanic zircons in a tuff layer (Ciccioli *et al.* 2014). Likewise, Collo *et al.* (2015) reported a maximum sedimentation age of 12.62 ± 0.4 Ma based on U–Pb laser altimetry–inductively coupled plasma–mass spectrometry (LA-ICP-MS) detrital zircon data from the lowest tuffaceous level at *c.* 5500 m depth. Defined as Late Miocene – Early Pliocene by Rodríguez Brizuela & Tauber (2006), the tuffaceous level 750 m below the top of the Toro Negro Formation was recently dated at 5.25 ± 0.23 Ma (U–Pb LA-ICP-MS in zircons; Collo *et al.* 2015). Unconformably overlying the Neogene sequence, the coarse-grained synorogenic deposits of the El Corral Formation (Furque, 1963) represent a diachronic intra-montane unit that resulted from cannibalization of the Neogene basin (Ciccioli *et al.* 2011). The flat-lying Pleistocene Santa Florentina Formation completes the local Cenozoic sedimentary column.

The timing of basement block exhumation in the area is not completely constrained, due to the lack of precise dating. The exhumation of the Neogene sequence as a whole was constrained at *c.* 3.4 Ma (Collo *et al.* 2011).

4. Methods

This contribution will focus on the structural fabric and kinematic analyses at both regional and outcrop scales. Field work was performed at eight accessible key areas of the Sierra de los Colorados region: Norte (N), quebrada de Pozuelos (QP), quebrada de La Troya (QLT), north of Vinchina town (NV), quebradas KB (KB), finca Buenavista (fB), road to Jagüé (rJ) and quebrada del Yeso (QY; Fig. 2). At the outcrop scale, the evaluated fabric elements comprised planar structures such as bedding, brittle–ductile shear zones (following Ramsay & Huber, 1987) and fractures (tensional, shear-extensional, etc.). Kinematics was established by the offset of structures, presence of releasing/restraining bends, distribution of en échelon gashes, tensional fractures, rough cleavage and/or Riedel structures (Fig. 3a). When possible, timing of minor structures was defined by cross-cutting, overprinting and reactivation relationships. Three-dimensional kinematic measurements on the minor structures that affect Neogene strata were performed in order to identify the different kinematic events (see Japas, Rubinstein & Kleiman, 2013). Data from kinematic indicators measured in the field were plotted

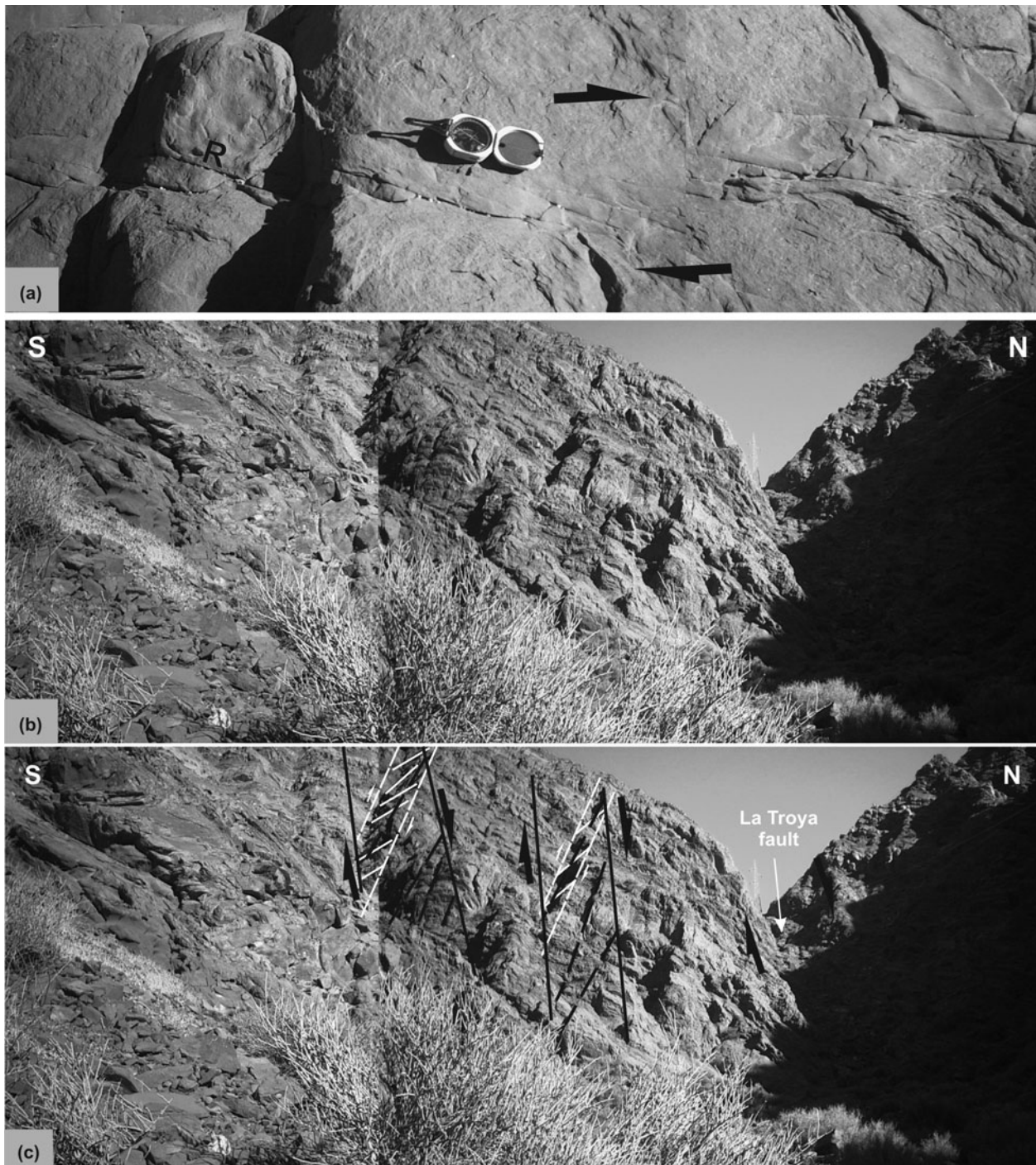


Figure 3. (a) Brittle–ductile shear zone at the outcrop scale. R: Riedel shear structure. (b) La Troya fault. (c) La Troya fault and related structures. Black lines show brittle–ductile shear zones parallel to La Troya fault and associated R structures. White lines show minor R shears within the main R structures in black.

using FaultKinWin software (R. W. Allmendinger, unpub. data, 2001).

5. Sierra de los Colorados structure

5.a. Bedding

The thick Neogene sedimentary pile exposed in the Sierra de los Colorados follows a NNE-trending strip, with beds showing localized and abrupt changes in

strike (Fig. 2). Alternating NE–SW and nearly N–S-trending strata define a kink-like structure, in which four structural segments were defined (South, Central, North and North-northeast domains; Fig. 4a). East to the Sierra de Toro Negro, the North-northeast domain is the only exposed area showing NNW-trending beds (N in Fig. 4a).

The Neogene strata show W-directed decreasing dip angles towards the top of the sequence (Fig. 4b). Along the quebrada de La Troya section, the lowermost beds

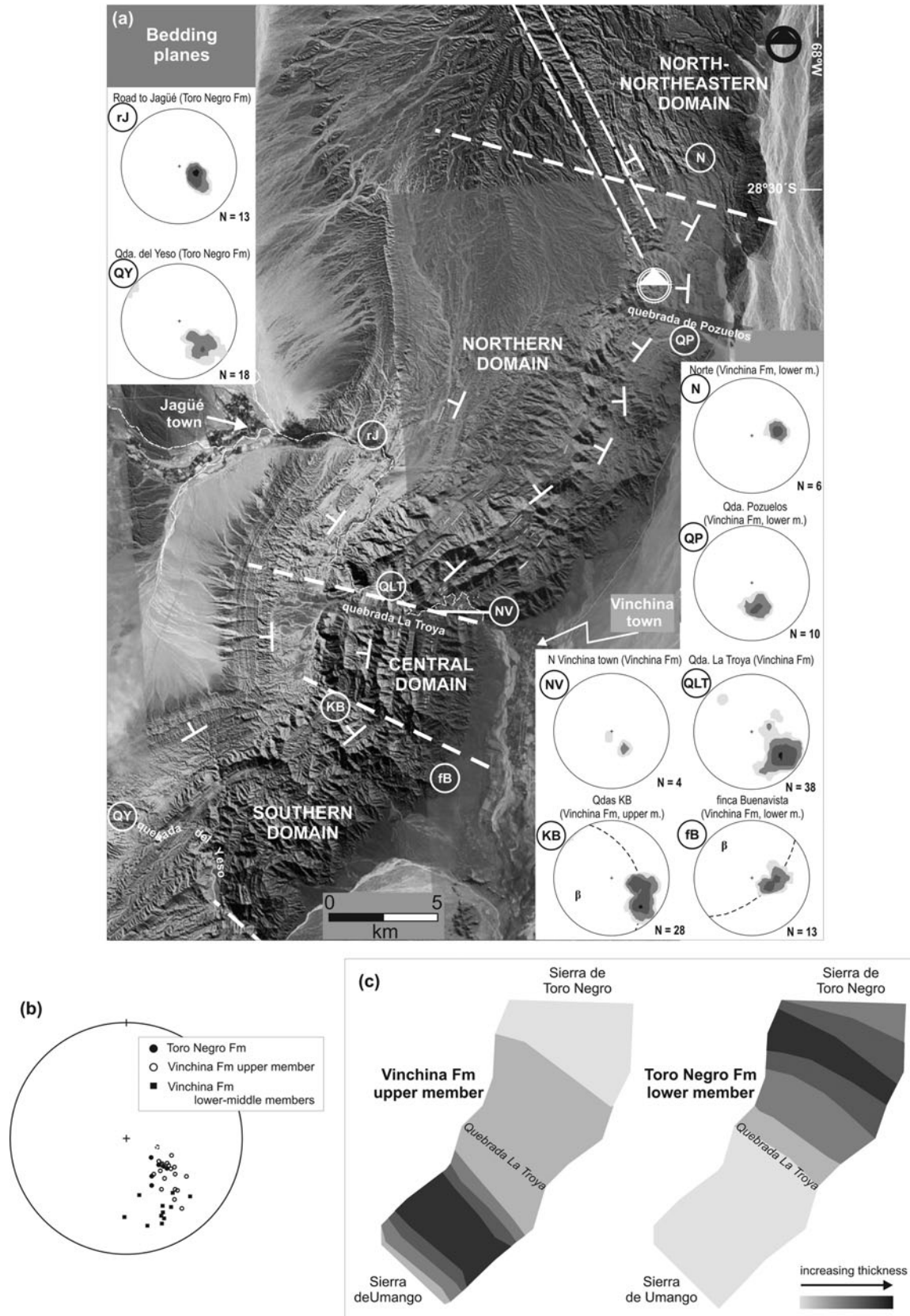


Figure 4. (a) Bedding in the Sierra de los Colorados domains (lower-hemisphere plot on equal-area stereonet; GEORIENT software by Holcombe, 2005). Sampled key areas are N: Norte; QP: quebrada de Pozuelos; QLT: quebrada de La Troya; NV: north of Vinchina town; KB: quebradas KB; fB: finca Buenavista; rJ: road to Jagüé; QY: quebrada del Yeso. Contours bounding shaded areas represent in N: 6–12%, 12–24%, >24% (max. 41.18%), QP: 10–20%, 20–40%, >40% (max. 50%), QLT: 3–6%, 6–12%, 12–24%, >24% (max. 26.32%), NV: 25–50%, >50% (max. 75%), KB: 4–8%, 8–16%, 16–32%, >32% (max. 35.71%), fB: 8–16%, 16–32%, >32% (max. 46.15%), rJ: 8–16%, 16–32%, 32–64%, >64% (max. 76.92%), QY: 6–12%, 12–24%, >24% (max. 27.78%). (b) Bedding showing dip angle towards the top of the Neogene sequence (lower-hemisphere plot on equal-area stereonet). (c) Isopach maps for the Vinchina Formation upper member and the Toro Formation lower member (after Ramos, 1970).

of the Neogene sequence dip *c.* 60° W whereas the uppermost levels dip *c.* 40° W (respectively QLT and rJ in Fig. 4a; see also Fig. 4b).

Two bedding plane sets were discriminated at fB and KB localities (Fig. 4a). In fB, they represent minor kink-like structures that are constrained to a relatively wide zone that bounds the Central and South domains (internal kink-like bands; Anderson, 1974; fB in Fig. 4a). This local structure is geometrically concordant with the main kink-like structure as β -axis trends to the NW. At the Sierra de los Colorados scale, some incipient kink-like structures can be also observed in the North domain north of the quebrada la Troya, where minor WNW-trending fractures resemble a localized 'cleavage-like' fabric (Fig. 4a). Also linked to a sharp transition zone between domains (Central and South), the two observed sets in KB reflect a different pattern as β trends SW (KB in Fig. 4a).

Additionally, and constrained to the vicinity of the sierra de Umango-Espinal, there are some well-developed folds affecting the Vinchina and Toro Negro formations (southwestern South domain; Fig. 4a), whose amplitude diminishes towards the top of the Neogene sedimentary column.

5.b. Brittle–ductile shear zones

At the range scale, the described kink-like structure is delineated by WNW-trending brittle–ductile shear zones that define wide and narrow zones of localized deformation (Fig. 4a). A nearly E–W-trending normal-sinistral fault (La Troya fault; LTF in Fig. 2) is exposed at the easternmost sector of the quebrada de la Troya as part of the sharp transition zone between the North and Central domains (Fig. 3b, c). This fault disappears to the west where it is replaced by a brittle–ductile shear zone trending WNW. To the east, in locality NV (Fig. 5), lower member rocks of the Vinchina Formation also are affected by dominant WNW-trending brittle–ductile shear zones.

At the outcrop scale, diagrams in Figure 5 show that rocks from the Vinchina Formation lower and middle members display two main sets of brittle–ductile shear zones, one trending NNE and the other, NW–WNW. On the other hand, the Vinchina Formation upper member and the Toro Negro Formation are only affected by the WNW-trending set. In other words, NNE-trending structures were only found at the base of the Neogene sequence while NW- to WNW-trending structures are widely distributed.

6. Kinematic analyses

Figure 5 shows the kinematic axes that resulted from processing the kinematic indicators measured in the field. As previously mentioned, deformation was inhomogeneously distributed in space and time, and therefore the obtained kinematic axes will be described considering the units they affect (Fig. 5).

(1) In three of the five areas where Vinchina Formation lower and middle members were analysed, two main kinematic populations were recognized (A and B populations in N, QLT, fB; Fig. 5). In QLT and fB localities, shortening axes trend NE–SW (A-populations) and NW–SE (B-populations). In the case of locality N, the A-population shortening axis is SE-directed while the B-population shortening axis is SW-directed. In the two other areas, where the Vinchina Formation lower member was analysed (NV and QP in Fig. 5), measurements revealed kinematic axes belonging to the B-population. Dominant WNW-trending brittle–ductile shear zones in NV are linked to the La Troya fault and reveal normal-sinistral components of motions with a kinematic stretching axis trending to the NNE–NE.

(2) The lowermost levels from the Vinchina Formation upper member (western part of QLT) show the development of WNW-trending brittle–ductile shear zones with kinematic axes consistent with the B-population previously defined for the underlying members.

(3) On the other hand, when structures affecting rocks of the uppermost Vinchina Formation beds and the Toro Negro Formation are considered, a single and different kinematic population C could be observed, with kinematic axes disposed horizontally (T-axes; extension) and vertically (P-axes; shortening). The Bingham extension axis trends ENE in the Central domain (rJ), whereas it is oriented NNW in the Southern domain (KB and QY).

Although scarcely represented at the base of the Neogene sedimentary sequence, the C-population (only recognizable by its vertical P-axes; Fig. 5) shows a kinematic pattern coincident with that affecting the Toro Negro Formation which is linked to the position (convex or concave side) of the kink-like structure.

7. Interpretation and discussion

Data in sections 5 and 6 point to significant differences when comparing the lower-middle members of the Vinchina Formation with the Vinchina upper member and Toro Negro formations. From the two sets of NNE- and NW- to WNW-trending brittle–ductile shear zones identified at the base of the Neogene sequence, only the one that trends WNW affects the Vinchina Formation upper member (Fig. 5). This evidence, together with cross-cutting relationships, confirms NNE-striking structures pre-dating NNW–WNW ones.

This deformational scenario also agrees with palaeomagnetic data in the Sierra de los Colorados region since Vinchina Formation lower and middle members record the same number of clockwise rotations, indicating that deformation should have begun almost contemporaneously with the Vinchina Formation middle member deposition (~11–12 Ma; G. H. Ré, unpubl. Ph.D. thesis, Univ. de Buenos Aires, 2008; Japas *et al.* 2015). Clockwise rotation at the base of the Neogene sequence in the Sierra de los Colorados was considered by Aubry *et al.* (1996) as the consequence of tectonic

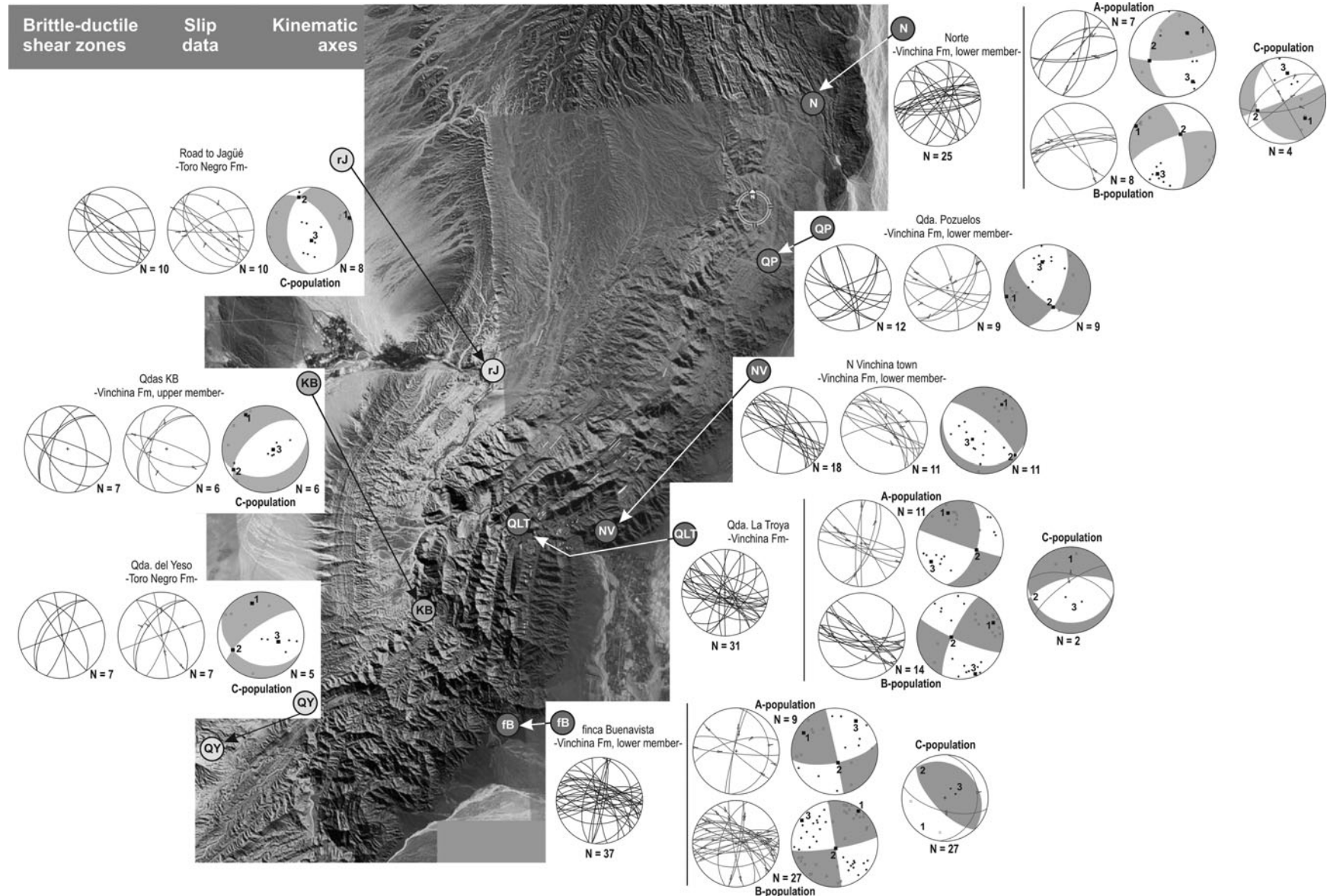


Figure 5. Brittle–ductile shear zones, slip data and kinematic axes measured in the Neogene sequence of the Sierra de los Colorados. Abbreviations as for Figure 4a. FaultKinWin software (R. W. Allmendinger, unpub. data, 2001). Notice that the main brittle–ductile zones affecting the Vinchina Formation lower member present in the N-NE domain is the same set as in other areas but rotated counterclockwise. This is concordant with preliminary palaeomagnetic results in the N-NE domain which reveal null rotation (G. H. Ré *et al.*, unpub. data). Two main populations (A and B) and a poorly defined one (C) were recognized for the lower-middle Vinchina Formation rocks. At the base of the Vinchina Formation, upper member B-population is present whereas the Toro Negro Formation rocks only record population C. In slip-data diagrams, arrows indicate movement of hanging wall. In kinematic diagrams, squares represent individual T-axes (extension), black circles individual P-axes (shortening); black squares 1 (shortening), 2 (intermediate), 3 (extension) refer to the calculated unweighted moment tensor (linked Bingham) axes (R. W. Allmendinger, unpub. data, 2001).

activity of the NE-striking Tucumán Zone. However, kinematic axes are more akin to the Central Precordillera kinematic picture because kinematic shortening axes are similar to the NE trend reported by Oriolo *et al.* (2014) and do not match the expected E-W referred to by Allmendinger (1986) and Sasso & Clark (1998) or the NW–SE determined by Urreiztieta (1996). This affinity with Central Precordillera deformation style is also supported by the time of the San Roque (*c.* 10.5 Ma) or Blanquitos (*c.* 11.5 Ma) thrust initiation reported by Jordan *et al.* (1993) and Jordan, Schlunegger & Cardozo (2001) considering (e.g. Yáñez *et al.* 2001) or not (Suriano *et al.* 2015) a southern migration of the deformation front. Additionally, NNE-striking thrusts pre-dating deformation along NNW–WNW basement-controlled structures were reported by Oriolo *et al.* (2015) for the Precordillera.

Previous studies in the Central Precordillera reported an equivalent change from NNE-directed to WNW-directed shortening axes. This reorientation was linked to the inception of basement-involved deformation in the foreland (Japas *et al.* 2014, 2015; Oriolo *et al.* 2014), meaning that the appearance of basement-signature kinematics in the Sierra de los Colorados area occurred during deposition of the upper member of the Vinchina Formation (B-population). Regarding the timing of deformation involving basement, it started earlier in the Sierra de los Colorados area (28° S) than in the Central Precordillera at 31° S. Inception of basement deformation is confirmed by uplift of the Sierra de Umango-Espinal indicated by detrital zircon data (Ciccioli *et al.* 2011) and consequent local thickness increase of the Vinchina Formation upper member (Ramos, 1970) resulting from topographic loading subsidence (Fig. 4c).

Furthermore, west of the quebrada del Yeso, forced folds affect the whole sequence and become gentler towards the top of the sedimentary column (Ramos, 1970). These folds might be a result of progressive uplift of the Sierra de Umango-Espinal basement block that started during deposition of the upper Vinchina Formation member. Likewise, the presence of (a) three unconformity surfaces in the middle Vinchina Formation section (Marensi *et al.* 2000), (b) changes in palaeocurrent patterns, from axial, NNE-directed to SE-directed (Limarino *et al.* 2001; Tripaldi *et al.* 2001), and (c) decreasing bedding-dip angle towards the top of the Neogene sequence (progressive unconformity; Fig. 4b), support the occurrence of a significant change at the beginning of deposition of the Vinchina Formation upper member.

During or shortly after deposition of the uppermost Vinchina Formation and the Toro Negro Formation, the kinematic scenario changed. This new kinematic field is represented by extension (C-population) and, although not yet completely understood, it is proposed that it could be related to kinematic conditions linked to the evolution of a kink-like structure (see Pimenta, 2008).

It is noteworthy that this kinematic scenario is characterized by three kinematic events (A: affecting the Vinchina lower and middle members; B: deforming all the Vinchina members; and C: affecting the whole sequence but mostly recognizable in the uppermost Vinchina upper member and the Toro Negro formations) and shows striking correspondences with coeval stages proposed by Ciccioli *et al.* (2011, 2013a, b; Table 2) based on tectonostratigraphic analysis.

7.a. Presence and role of brittle–ductile oblique megashear zones

7.a.1. Regional NNW- and NNE-trending transpressional structures

Regional NNW- and NNE-trending structures comprise transpressional brittle–ductile shear zones (Ré, Japas & Barredo, 2001; Cortés & Cegarra, 2004; Japas & Ré, 2012a, b; Oriolo *et al.* 2014; Japas *et al.* 2015; Fig. 1c). In the study area, the NNW-trending, sinistral transpressional Valle Fértil zone (linked to the Cuyania – Famatina/Pampia terrane boundary; Gimenez, Martínez & Introcaso, 2000; Introcaso & Ruiz, 2001), as well as shallow NNE-trending structures (considered as main dextral transpressional structures in the Precordillera region; Oriolo *et al.* 2015), were confirmed as major structures by gravimetric and magnetometric data by Porcher *et al.* (2004). In a more regional context, these structures as well as other oblique localized deformational belts can also be recognized by regional aeromagnetometry (SEGEMAR, unpub. data, 2012, <http://sig.segemar.gov.ar>; Fig. 6a). Some of the NNW-trending structures show neotectonic activity (Casa *et al.* 2011; SEGEMAR, unpub. data, 2012, <http://sig.segemar.gov.ar>).

Fault plane solutions of the 34 km deep Villa Unión earthquake (Fig. 6b) indicate a nodal plane steeply dipping to the ENE (Triep & Cardinali, 1984), sustaining the transpressional character of the NNW-trending structures as well as their sinistral strike-slip component of motion. Additionally, relative motions derived from scarce available GPS velocity data in the upper plate (Tinogasta and Guandacol sites in Fig. 6b; Brooks *et al.* 2003) confirm left-lateral (and thrust) displacements for the NNW-trending structures.

Based on structural elements at the Sierra de Famatina scale, two transpressional shear zones can be better constrained: the Miranda–Chepes and the Angulos–Patquía belts (Fig. 6c). These two structures substitute Ré, Japas & Barredo's (2001) Chilecito–Chepes and Chamental–Sañogasta zones from Figure 1c. The Angulos–Patquía zone seems to reactivate the western border of the 402–300 Ma Tinogasta–Pituiñ–Antinaco shear zone (TiPA belt; López & Toselli, 1993; Höck-reiner, Söllner & Miller, 2003). Although detailed structural mapping in the Sierra de Famatina is still scarce, regional structures reveal a possible Neogene flower structure controlled by both megashear zones

Table 2. Tracking basement uplift in the Sierra de los Colorados and neighbouring areas based on stratigraphical and kinematic information.

Unit/member	Age (Ma)	Palaeo current	Subsidence/fill rate S/F	Source	Kinematic Population	Vertical axis rotation	Uplift	Deformation stage	Active oblique belt
Toro Negro Fm. upper									La Mejicana cross-strike
lower-middle	5.5			Pc+ CF + STN	C	ca. 7° clockwise	Sa. Toro Negro	Broken foreland	Miranda-Chepes transpositional belt
lower	9–6		Paleovalley incision (localized thickness increase)						
Vinchina Fm. upper	9.24	SE (higher dispersion)	Balanced S/F rate	WVA	B + C	ca. 15° clockwise	Sa. Famatina & Sa. Toro Negro		
middle	10–12	SE	Localized thickness increase close to the Sa. Umango-Espinal	WVA	A+B+C	ca. 30° clockwise	Sa. Umango-Espinal	Embryonic thin-skinned	Tucumán cross-strike
lower	19 (?)–12	NNE (axial)	Higher subsidence Two unconformities Underfilled Low subsidence	Metamorphic + FC					

Data compiled from Ramos (1999), Limarino *et al.* (2001), Tripaldi *et al.* (2001), G. H. Ré (unpubl. Ph.D. thesis, Univ. de Buenos Aires, 2008), Limarino, Ciccioi & Marenssi (2010), Collo *et al.* (2011, 2014), Ciccioi & Marenssi (2012), Ciccioi *et al.* (2013b), Japas *et al.* (2015). WVA: western volcanic arc; Pe: Precordillera; FC: Frontal Cordillera; STN: Sierra de Toro Negro.

(Fig. 7a, c). This flower structure explains an uplift associated with reverse faults within the range, and not along a fault system at the range boundary (see de Alba, 1979; Jordan & Allmendinger, 1986), and would also contribute to the higher altitude of the Sierra de Famatina compared to other ranges in NW Sierras Pampeanas.

7.a.2. Regional transtensional cross-strike structures

WNW-trending structures in the Precordillera region were referred to by Oriolo *et al.* (2014) as cross-strike discontinuities, consisting of broad, diffuse zones of faults and fractures cutting the entire fold-and-thrust belt at high angles to its regional strike. They are vertical structures usually originated by strike-slip reactivation of pre-existing basement faults that disrupt strike-parallel structural, geophysical, sedimentological and/or other patterns (Wheeler, 1980; Berger, 2001). Although frequently confused with other structures like tear faults and lateral ramps, they are different. Tear faults comprise small-scale individual strike-slip faults typically confined to a single thrust sheet dying out at the regional décollement, whereas lateral ramps consist of large-scale, high-angle (but not vertical; McClay, 1992) faults allowing the overriding thrust sheet to reach a higher stratigraphic level (Berger, 2001). In the Precordillera, these basement-involved cross-strike discontinuities were recognized as sinistral transtensional zones (Ré, Japas & Barredo, 2001; Oriolo *et al.* 2014; Yagupsky, Winocur & Cristallini, 2014; Japas *et al.* 2015) and therefore considered as preferred channels for the rise and extrusion of magma. In the Precordillera and Sierras Pampeanas they seem to be crucial structures controlling volcanism emplacement during the inland migration of arc magmatism, linked mineralization and also some present-day geothermal occurrences linked to convective hydrothermal systems (see Urbina, Sruoga & Malvicini, 1995, 1997; Sruoga, Urbina & Malvicini, 1996; Chernicoff & Nash, 2002; Pesce & Miranda, 2003; Sruoga & Urbina, 2008; Urbina & Sruoga, 2009; Japas, Urbina & Sruoga, 2010; Japas *et al.* 2011a, b; Oriolo *et al.* 2014). The link between magmatism emplacement and cross-strike structures is not restricted to the Pampean flat slab region but was also recognized in the Central and South Southern Volcanic Zone (Southern Andes; Lara *et al.* 2006), and the Puna region (Ré, Japas & Barredo, 2001; Riller *et al.* 2001; Chernicoff, Richards & Zappettini, 2002; Roy *et al.* 2006), where some of the authors also recognized extensional conditions (see also Sillitoe, 1997; Billa *et al.* 2004).

The WNW-trending structures in the Sierra de los Colorados show sinistral-normal displacements (NV in Fig. 4a). This WNW-trending brittle–ductile shear zone along the quebrada de La Troya is coincident with the Vinchina Lineament (Fig. 6a, b), a middle Proterozoic main sub-regional structure recognized by Porcher *et al.* (2004) based on regional aeromagnetic and gravimetric data. A similar structural discontinuity

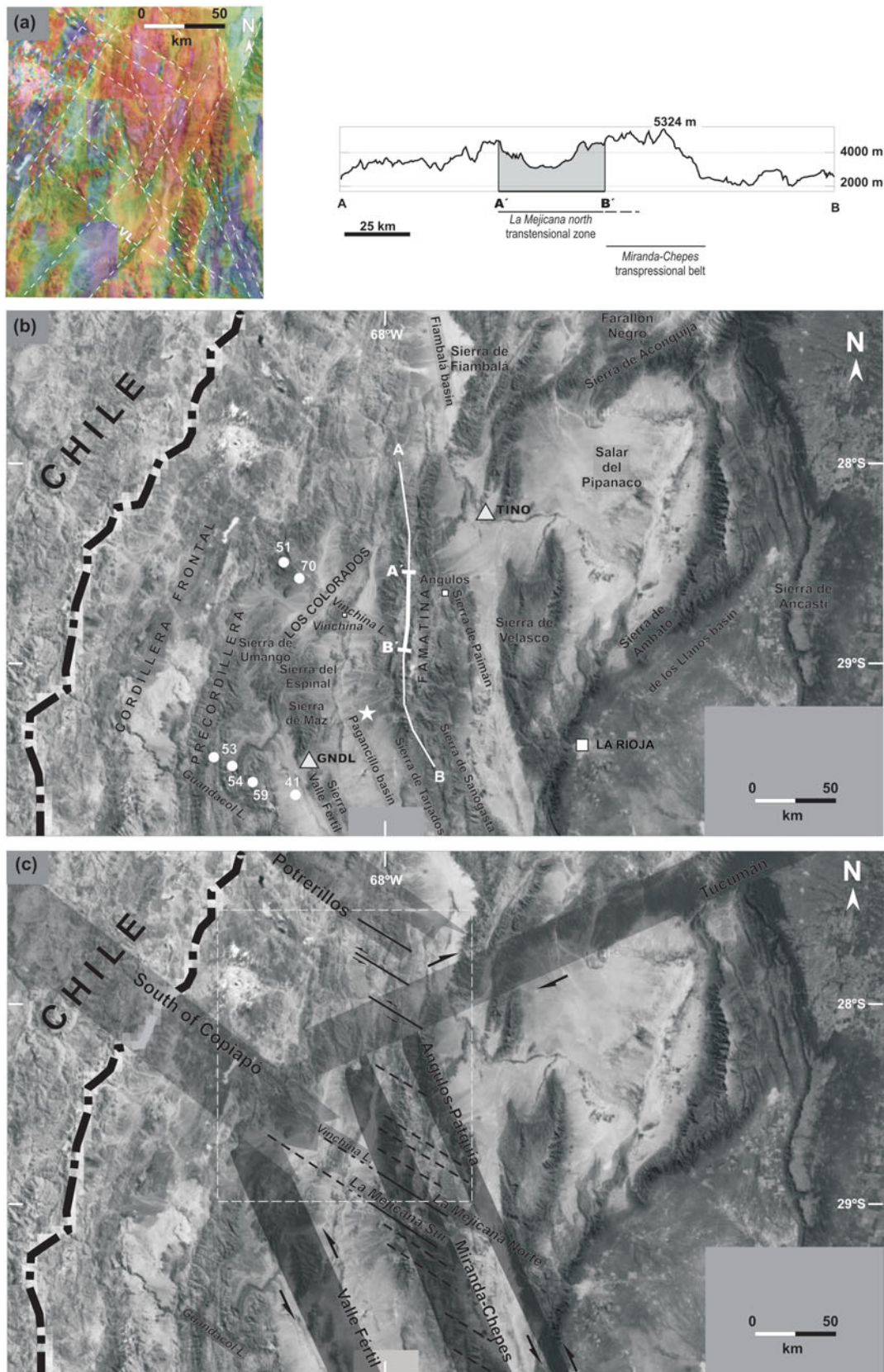


Figure 6. (Colour online) (a) Regional aeromagnetic map of the magnetic anomaly reduced to pole (SEGEMAR, unpub. data, 2012, <http://sig.segemar.gov.ar>) showing main lineaments. VL: Vinchina Lineament (Porcher *et al.* 2004). Location is shown in (c). (b) Sierra de los Colorados area in the regional context. Star shows the Villa Unión earthquake epicentre (Triep & Cardinali, 1984); white circles indicate earthquake epicenters (numbers refer to earthquake depth; United States Geological Survey database, earthquake.usgs.gov); triangles locate the GPS velocity datum sites from Brooks *et al.* (2003) (TINO: Tinogasta; GNDL: Guandacol). The Vinchina and Guandacol lineaments defined by Porcher *et al.* (2004) are shown. A–A'–B'–B locates the topographic profile. Notice that along-strike changes in altitude are strikingly coincident with the transensional and transpressional structures referred in the topographic profile. (c) Main regional oblique brittle–ductile shear zones. Lateral components of motions are shown. Rectangle indicates area of (a).

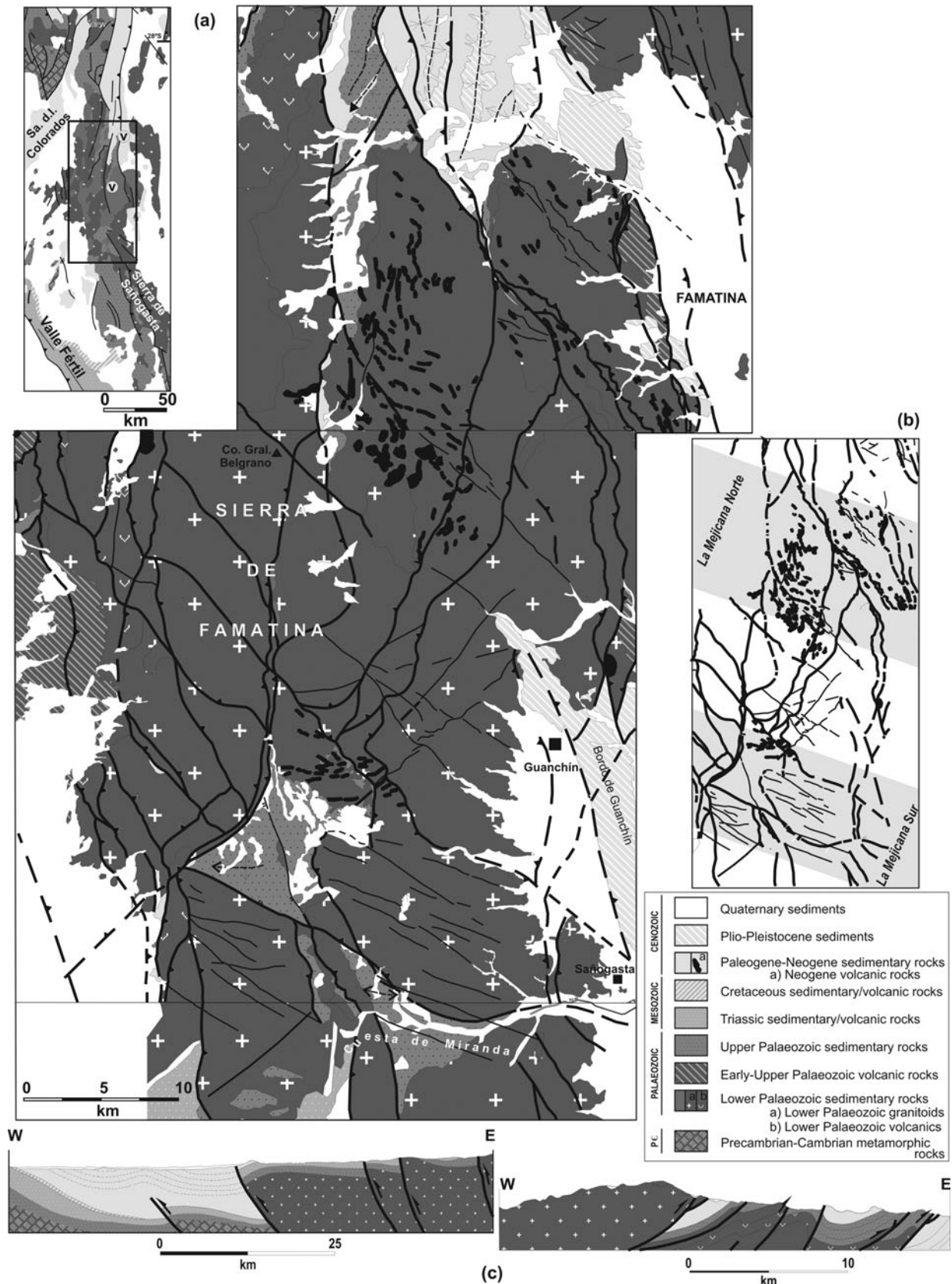


Figure 7. (a) Geological map of central Sierra de Famatina and northern Sierra de Sañogasta (after Candiani *et al.* 2011; Fauqué *et al.* 2016), and location map. (b) Exposures of Neogene volcanic rocks, fracture fabric and the La Mejicana cross-strike structures. Note in (a) the left-lateral displacement of Early Palaeozoic volcanic and the Late Palaeozoic sedimentary rock exposures at Cuesta de Miranda by the La Mejicana Sur structure. (c) E–W cross-sections: Sierra de Sañogasta (left; after Fauqué *et al.* 2016) and central Famatina (right; after Candiani *et al.* 2011).

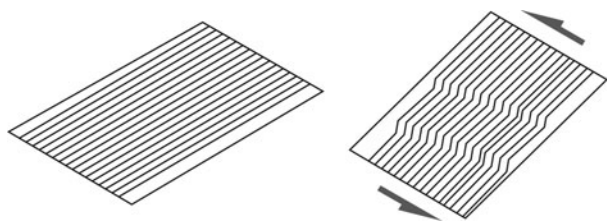


Figure 8. Origin of the Sierra de los Colorados kink-like structure (adapted from Reches & Johnson, 1976).

south of the Sierra de Umango represents a main structure in the northern Precordillera area that was detected by surface evidence (Guandacol Lineament from Porcher *et al.* 2004; see Ré, Japas & Barredo, 2000, 2001; Chernicoff & Nash, 2002; Oriolo *et al.* 2014; Japas *et al.* 2015; Figs 1c, 6b). The Vinchina and Guandacol WNW-trending structures separate basement blocks of different magnetic and gravimetric signatures and were referred to by Porcher *et al.* (2004) as representing Grenvillian age suture zones. During the Neogene, these basement structures reactivated, as confirmed by earthquake data showing hypocentres at 35–70 km depth along these structures (Fig. 6b), in contrast with the 15–21 km depth detachment level indicated for the thin-skinned fold-and-thrust belt by Allmendinger *et al.* (1990), Cristallini & Ramos (2000), Ammirati *et al.* (2013) and Ammirati, Alvarado & Beck (2015).

The localized WNW-trending cross-strike structures affecting the Sierra de los Colorados are responsible for the kinking of the thick Neogene foreland sequence. Average rheological properties of the Neogene sedimentary sequence in the Sierra de los Colorados permit this thick synorogenic pile to be considered as a composite foliated rock or multilayer. Experimental results by Cobbold, Cosgrove & Summers (1971), Gay & Weiss (1974) and Reches & Johnson (1976) reveal that, when compressed, the homogeneous anisotropic nature of such a package should induce internal instabilities and the formation of internal structures controlled by the high degree of anisotropy. These authors showed that at angles of *c.* 30–45° (Cobbold, Cosgrove & Summers, 1971) and 5–30° (Gay & Weiss, 1974) between compression and layering, a single set of kinks should develop. The single set of kinks that represents the Sierra de los Colorados conditions is equivalent to the structure in Figure 8, and could explain the apparent inconsistency between normal-sinistral WNW-trending structures and the *c.* 18% along-strike finite shortening in the Sierra de los Colorados. The late development of this mesoscale kink structure is coherent with the observed vertical rotation pattern since results by G. H. Ré *et al.* (unpub. data) revealed null rotation in the Central domain where layering would have rotated counterclockwise.

To the east of the Sierra de los Colorados, the WNW-trending structures could be extended into the Sierra de Famatina. Here, two cross-strike discontinuities can be defined: the La Mejicana Sur and La Mejicana Norte structures (Figs 6b, c, 7b). They comprise broad and

diffuse zones of faults and fractures controlling both the emplacement of the Mio-Pliocene volcanic rocks from the Mogote Río Blanco Formation and related mineralization (Roy *et al.* 2006) and the Pliocene thick volcanoclastic deposition in the Angulos area studied by Dávila & Astini (2007; Fig. 6b). As cross-strike structures, they disrupt strike-parallel geophysical (Fig. 6a) and structural patterns, as can be seen for example at Cuesta de Miranda (Fig. 7a, b), where structural differences between the Sierra de Sañogasta and Sierra de Famatina were early highlighted by de Alba (1979) and Durand, Toselli & Aceñolaza (1987). At a more regional scale, these WNW-trending oblique structures represent the inland prolongation of the main arc-transverse fault zones defined by Sillitoe & Perelló (2005): the La Mejicana Sur and La Mejicana Norte structures are strikingly aligned with the southernmost lineament south of Copiapó, while a similar brittle–ductile shear zone north of Famatina would correspond to the foreland extension of the Potrerillos Lineament (Fig. 6c).

A main regional NE-trending oblique belt in NW Argentina, the Tucumán Lineament (Mon, 1976) or Tucumán Transfer Zone (Rossello *et al.* 1996; Urreiztieta, 1996) would have been responsible for the Sierra de Aconquija, northern Famatina range, and the Sierra de Fiambalá uplift. Gravimetric and magnetometric data by Porcher *et al.* (2004) show significant NE-trending fracturing in the Sierra de Umango – Sierra de Maz area. This brittle–ductile structure is also associated with Neogene volcanism far from the trench (the Farallón Negro Volcanic Complex; Llambías, 1970, 1972; Sasso & Clark, 1998).

7.a.3. Neogene magmatism and cross-strike structures

The Mogote Río Blanco Formation volcanism (6.38 ± 0.37 to 4.24 ± 0.11 Ma, Ar–Ar ages; Toselli, 1996) and the epithermal alteration and vein systems linked to this volcanism (4 Ma, hydrogen isotope data by Taylor, McKee & Sillitoe, 1997; and 5.3 ± 0.1 to 4.0 ± 0.1 Ma, Ar–Ar plateau ages by Losada-Calderón, McBride & Bloom, 1994) constrain the age of La Mejicana cross-strike activation between 6 and 4 Ma.

In La Mejicana Mining District, Neogene dacitic porphyries were mostly emplaced along N–S-trending structures (Losada-Calderón & Bloom, 1990), whereas related mineralized veins and the distribution of alteration minerals trend dominantly NW–SE to WNW–ESE and E–W (A. Losada-Calderón, unpub. Ph.D. thesis, Monash Univ., 1992; Losada-Calderón & McPhail, 1996; Azcurra *et al.* 2005; Fauqué *et al.* 2006; Puckett *et al.* 2009; Candiani *et al.* 2011; Fig. 7a, b). These alteration trends reveal the control of tensional to shear extensional structures. A similar scenario characterized by two sets of structures controlling emplacement of magmatism and linked mineralization was described in different Neogene volcanic zones from the broken foreland. A first magmatism emplacement stage

controlled by transpressive / strike-slip structures was immediately followed by a late one controlled by cross-strike transtensional fractures in the Farallón Negro region, in the Faja Volcánica Terciaria from San Luis (Sasso & Clark, 1998; Japas, Urbina & Sruoga, 2010; Japas *et al.* 2011*a, b*), but also in the Central Precordillera (Hualilán belt; S. Oriolo, unpub. Trabajo Final de Licenciatura, Univ. de Buenos Aires, 2012). Connection between tectonic and magmatic processes in oblique convergence systems was considered by Saint Blanquat *et al.* (1998) as linked in a positive feedback loop where deformation contributes to magma overpressuring and to connecting regions with pressure gradients (triggering its upward transport), and magma facilitates weakening of rocks and magma-induced deformation.

Cross-strike structures also produce localized accommodation spaces for coeval epi- and volcanoclastic rock accumulation, as was recognized in the Faja Volcánica Terciaria by Japas, Urbina & Sruoga (2010). In central Sierra de Famatina, localized subsidence associated with La Mejicana Norte cross-strike structure could thus be an alternative explanation to the volcanic-induced load proposed by Martina, Dávila & Astini (2006) for the volcanic depocentre near Angulos town (El Durazno Formation volcanoclastic rocks, 5.2 ± 0.85 Ma according to Tabbutt, 1990). Likewise, it could explain the palaeocurrent change reported by Dávila & Astini (2007) at the time of magmatism emplacement, as palaeocurrent turned towards the NE-NNE, perpendicular to the WNW-striking controlling faults. Source area composition also confirms this link as clasts from the underlying Del Buey Formation and Late Miocene – Pliocene volcanic-derived boulders contributed to the deposit (Dávila & Astini, 2007). The increase in clast size of the El Durazno Formation relative to the underlying sequences and the presence of contrasted compositions when compared with other contemporaneous deposits in the broken foreland (Dávila & Astini, 2007) would support the existence of a revitalized topography and basin fragmentation at a smaller scale, probably as a consequence of La Mejicana Norte activation.

The presence of Neogene magmatism far from the trench at 27–33° S would introduce a significant change in the foreland system as it should produce, at least locally, an increase in heat flow and some other magma-related softening processes of the crust. This seems to be concurrent with the fact that with magmatism emplacement, thick-skinned deformation started in the Sierras Pampeanas and Precordillera (Ramos, Cristallini & Perez, 2002; Japas, Urbina & Sruoga, 2010; Oriolo *et al.* 2014). Because information about uplift in the broken foreland comes from a still poorly constrained stratigraphy and low-temperature thermochronology (Nobile & Dávila, 2012), the precise timing between magmatism emplacement and thick-skinned deformation could not yet be exactly established. One of the proposals about this suggests weakening of the crust enhanced by an increase in heat flow after magmatism em-

placed, with consequent development of brittle–ductile transition within the crust and basement-involved deformation (Ramos, Cristallini & Perez, 2002). However, according to Collo *et al.* (2011, 2015) and Dávila & Carter (2013), the Neogene basin in the study area does not record any regional thermal increase at least until *c.* 3.4 Ma. Collo *et al.* (2015) reported a *c.* 26–42 mW m⁻² (geothermal gradient of 15° C km⁻¹; Collo *et al.* 2011) to the east of the Precordillera, which is significantly lower than the heat flow of 60–80 mW m⁻² required to position the depth of the brittle–ductile transition into the crust (Kusznir & Park, 1986; Ramos, Cristallini & Perez, 2002). On the other hand, Nobile & Dávila (2012) demonstrated that the Sierra de Aconquija first uplift peak should have occurred at *c.* 12 Ma, the time of emplacement of the oldest volcanism in the Farallón Negro district. In the same way, La Mejicana district would also reveal simultaneous uplift and magmatism emplacement at *c.* 6.4 Ma. This concordance of magmatism and uplift ages would support melt-enhanced deformation ('tectonic surges' triggered by melt-lubricated shear zones; Hollister & Crawford, 1986) rather than heating-enhanced deformation (Coney, 1972; Burchfiel & Davis, 1975; Ramos, Cristallini & Perez, 2002). The active role of magmatism in increasing rock ductility is also supported by brittle–ductile shear zone substituting fault development (see also Kleiman & Japas, 2009; Japas, Urbina & Sruoga, 2010; Oriolo *et al.* 2014; Sruoga *et al.* 2014).

7.b. Compartmentalization of the Vinchina basin: timing of basement uplift

In the Sierra de los Colorados area, the Sierra de Umango-Espinal should have begun to be uplifted at *c.* 9 Ma based on sediment composition (Ciccioli *et al.* 2013*a*) and localized high thickness of the Vinchina Formation upper member (Ramos, 1970). This suggests an earlier onset of the broken-foreland stage than that constrained by Jordan, Schlunegger & Cardozo (2001) at 6.5 Ma, as previously supported by Dávila & Astini (2007), Dávila (2010) and Zambrano *et al.* (2011). Uplift of the Umango-Espinal block would also be active after 4.3 Ma (J. H. Reynolds, unpub. thesis, Dartmouth College, 1987; Ramos *et al.* 1988), revealing a long, recurrent and episodic history of uplift activity.

Considering the Sierra de Famatina region, fission-track age by Tabbutt (1990), and fission-track ages and magnetic polarity stratigraphy by Malizia, Reynolds & Tabbutt (1995) reported uplift at 6.8 Ma (Sierra de Famatina) and 6.1 Ma (Sierra de Tarjados, southern Sierra de Famatina; Fig. 6b), respectively. According to thermal modelling, Coughlin *et al.* (1998) indicate rapid cooling and exhumation of the Sierra de Famatina at *c.* 10–5 Ma based on apatite fission-track data. Based on the stratigraphic record in the Sierra de los Colorados, Limarino, Ciccioli & Marensi (2010) and

Ciccioli *et al.* (2013a, b, 2014) considered that the main Sierra de Famatina uplift phase correlates with the base of the Toro Negro Formation. The sharp incision at the base of the Toro Negro Formation in the quebrada de los Pozuelos area was interpreted as a palaeovalley that developed in response to a base level change triggered by uplift of the Sierra de Famatina (Limarino, Ciccioli & Marensi, 2010). This occurred between 9 Ma (Vinchina Formation upper member) and 5.5 Ma (Toro Negro Formation lower-middle members), consistent with the previously considered age of *c.* 6.1–6.8 Ma. At this time the Sierra de Toro Negro also uplifted (Ciccioli & Marensi, 2012), representing an additional source of subsidence. The Sierra de Toro Negro and the Sierra de Famatina basement blocks are aligned following the NNW-trending Miranda–Chepes transpressional belt that could be then considered active at 6.1–6.8 Ma.

WNW-trending cross-strike structures developed at the same time as, or immediately after, rocks of the Toro Negro Formation deposited. These structures affected the whole Neogene pile in the Sierra de los Colorados area and were contemporaneous with the Late Miocene to Early Pliocene volcanism emplacement in the Sierra de Famatina. To the north of the Sierra de Famatina, left-lateral WNW-trending structures displacing previous NNW-trending basement blocks would support this timing (Fig. 6c).

Thermochronological data constraining basement block exhumation in the broken foreland also confirm Neogene exhumation for the Western Sierras Pampeanas to some extent (Löbens *et al.* 2013a, b).

7.c. Proposed kinematic evolution

Identifiable deformation in the Sierra de los Colorados area began at *c.* 11–12 Ma, since both the lower and middle sections of the Vinchina Formation show the same amount of vertical axis rotation (*c.* 28° clockwise; G. H. Ré, unpubl. Ph.D. thesis, Univ. de Buenos Aires, 2008; Japas *et al.* 2015). This earlier signal of Andean deformation is interpreted as being related to the Precordillera thin-skinned deformation style because A-population kinematic shortening axes trend NNE and vertical axis rotation is clockwise (Fig. 9a). At *c.* 9 Ma, tectonic activity of the NE-trending Tucumán oblique structure triggered the Sierra de Umango-Espinal uplift (together with the Sierra de Aconquija, Sierra del Cañón and other related ranges; see Coughlin *et al.* 1998, Sobel & Strecker, 2003; Mortimer *et al.* 2007; Löbens *et al.* 2013a), inducing local topographic loading subsidence during deposition of the Vinchina Formation upper member (Fig. 9b). The activation of this regional oblique structure is also supported by the presence of both the kinematic B-population and the *c.* 14° clockwise vertical axis rotation. At about 6.1–6.8 Ma, the Miranda–Chepes belt activated and triggered the uplift of the Sierras de Sañogasta, Famatina and Toro Negro, and the left-lateral displacement of the Tucumán oblique megazone (Fig. 9c). At *c.* 6–4 Ma, the

WNW-trending La Mejicana oblique belts controlled emplacement of the Mogotes volcanism in Famatina and induced the Neogene sequence of the Sierra de los Colorados to kink (Fig. 9d).

7.d. Thick-skinned overprinting thin-skinned deformation

Several examples of thick-skinned structures overprinting thin-skinned orogens were described in different contractional settings and linked to different causes (Mazzoli *et al.* 2000; Lacombe & Mouthereau, 2002; Molinaro *et al.* 2005; Madritsch, Schmid & Fabbri, 2008; Bailly *et al.* 2009; Maurin & Rangin, 2009; Sapin *et al.* 2009; Japas & Ré, 2012a, b; Japas *et al.* 2015). Some authors point directly to critical taper preservation conditions (Molinaro *et al.* 2005; Maurin & Rangin, 2009; Kraemer *et al.* 2011), to increasing friction due to large wedge development (Bailly *et al.* 2009), to the presence of structural obstacles (Japas *et al.* 2015) or/and to changes in subduction parameters (Sapin *et al.* 2009) such as those linked to ridge indentation and flat subduction (Japas & Ré, 2012a, b; Japas *et al.* 2015).

A Late Pliocene basement-involved oblique brittle–ductile shear zone was recognized in the northern sector of the thin-skinned Western and Central Precordillera, the Rodeo–Talacasto belt, based on vertical axis rotation data and structures (Japas *et al.* 2015). This late, NNW–SSE-trending left-lateral structure overprinted the regional Miocene N–S / NNE–SSW-trending, dextral transpressional fabric representative of the Central Andes Rotation Pattern (CARP of Somoza, Singer & Coira, 1996). Kinematic axes also confirmed the existence of these early thin-skinned and late thick-skinned stages, with E- and NNE-directed shortening (as partitioned; Siame *et al.* 2005; Oriolo *et al.* 2014), and WNW- to NW-directed shortening (F. M. Dávila, unpub. Ph.D. thesis, Univ. Nacional de Córdoba, 2003; Japas *et al.* 2014; Oriolo *et al.* 2014), respectively. Considering the above-mentioned uplift ages for the broken foreland together with data at the northern edge of the Sierra de Valle Fértil (Ortiz *et al.* 2015) and the 2.75 Ma age for the activation of the Rodeo–Talacasto belt (Japas *et al.* 2015), the younging-basement-block-uplift-to-the-west proposed by Malizia, Reynolds & Tabbutt, (1995) and Coughlin *et al.* (1998) is confirmed, at least in western Sierras Pampeanas.

Different kinematic shortening axes in the Sierras Pampeanas (see also Japas, Urbina & Sruoga, 2010) and in the Precordillera, as well as the GPS-derived velocity field from Brooks *et al.* (2003), reveal mechanical decoupling between the orogen and the broken foreland. Partitioning of motions is controlled by the Late Palaeozoic and Early Palaeozoic fabrics from the Precordillera and the Sierras Pampeanas respectively, which independently controlled the orientation and vergence of the Andean faults in each sector.

Basement-involved deformation involves reactivation of inherited structures, implying some lateral motion. Components of strike-slip displacement were recognized in Neogene structures in the Precordillera

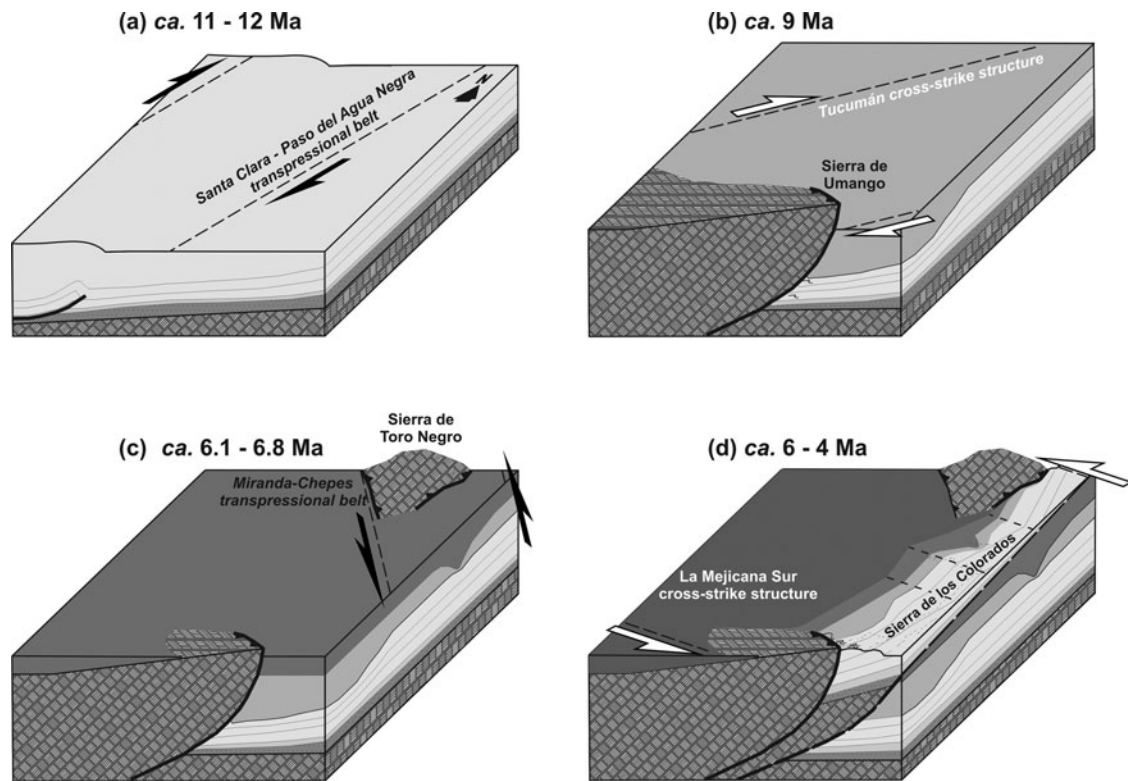


Figure 9. Schematic block-diagrams showing the Neogene evolution of the Sierra de los Colorados region at 28° S. (a) *c.* 11–12 Ma; (b) *c.* 9 Ma; (c) *c.* 6.1–6.8 Ma; (d) *c.* 6 to 4 Ma.

(Japas, 1998; Ré, Japas & Barredo, 2001; Cortés & Cegarra, 2004; Siame *et al.* 2005; Cortés *et al.* 2006; Japas & Ré, 2012*a, b*; Oriolo *et al.* 2014; Perucca & Ruiz, 2014; Japas *et al.* 2015) and also in the Sierras Pampeanas (Urreiztieta, 1996; Rossello *et al.* 1996; Japas, 1998; Ré, Japas & Barredo, 2000, 2001; Introcaso & Ruiz, 2001; Japas, Urbina & Sruoga, 2010). Although GPS data from Brooks *et al.* (2003) indicate a general ENE-trending convergence direction, some other kinematic indicators show WNW-trending shortening, at least since the Pliocene (Alvarado & Ramos, 2010, 2011; Japas, Urbina & Sruoga, 2010; Giambiagi *et al.* 2014). In the Sierras Pampeanas, Alvarado & Ramos (2010, 2011) explained the observed obliquity between the average P-axis of the seismic focal mechanism estimations and the GPS velocity orientation by slip partition, fault creeping and/or lower frequency of strike-slip recurrence compared to the *c.* 30-year instrumental measurement interval. In the Precordillera, this difference was linked to (a) local passive transport towards the ENE through a 10–12 km deep detachment level (Giambiagi *et al.* 2014), or (b) localized transpression associated with brittle–ductile megashear zones controlling basement-involved deformation (Japas *et al.* 2015).

The overprint of thick-skinned structures in the Sierra de los Colorados area reflects the advance of the orogenic front and the incorporation of the Sierras Pampeanas into the foreland deformation scenario since the Late Miocene – Pliocene. This overprint phenomenon occurred earlier in the Sierra de los Colorados

region than in the Central Precordillera to the south, reflecting basement deformation migrating in the same direction as migration of the flat slab subduction. Pre-Cenozoic, major, favourably oriented basement structures have strongly controlled the Neogene deformation style in the Sierras Pampeanas, fragmenting the distal foreland into a group of inter-montane basins controlled by basement uplift.

8. Conclusions

Kinematic analyses in the Neogene Sierra de los Colorados sedimentary sequence report three kinematic populations. Represented by NNE-trending structures and NE-directed shortening, the oldest A-population sustains the occurrence of an embryonic thin-skinned deformation stage, lately overprinted by the second B-population (NNW-trending structures, WNW-directed kinematic shortening) starting the broken foreland phase. Although not yet fully understood, the youngest kinematic C-population potentially indicates a late extensional stage linked to strain adjustments associated with the kink structure that is interpreted as a consequence of late basement-involved WNW-trending cross-strike structures.

Kinematic and available palaeomagnetic results constrain the first thin-skinned deformation stage to the Vinchina Formation middle–upper member boundary (*c.* 11–12 Ma) and the beginning of the basement-involved stage to the Vinchina Formation upper member (*c.* 9 Ma). This two-staged deformational history

indicates that this area is a transitional zone between the Precordillera and the Sierras Pampeanas.

Regional oblique brittle–ductile shear zones play a significant role in broken foreland deformation and during the thick-skinned overprint in the Precordillera region. They comprise the reactivation of inherited ancient structures. Internally, these brittle–ductile shear zones would have controlled the diachronic uplift and tilting of en échelon-distributed single basement blocks. Although also controlled by these Neogene megashear zones, differences in structural pattern in the Sierra de Famatina are linked to the development of a flower structure. This scenario explains the complex diachronic pattern of uplifted basement blocks.

The *La Mejicana* cross-strike structures are defined in the Famatina region and extended into the Sierra de los Colorados where they were responsible for the local late kink-like structure of the Neogene sequence. As in other regions in the foreland and broken foreland, La Mejicana Norte and La Mejicana Sur cross-strike structures controlled magma emplacement in the Pampean flat-slab segment.

The onset of basement deformation should result from magma-related softening processes and/or high interplate coupling, the latter being most consistent with a flat-slab scenario (with greater contact area between plates, and cooler temperatures / stronger rheology; Gutscher, 2002). Nevertheless, magma intrusion results in local softening of the crust and strain localization, even when small amounts of melt are introduced (Tommasi *et al.* 1994; Saint Blanquat *et al.* 1998). Once weakened the crust, diachronic uplift and exhumation are expected to be linked to both the southwestward regional migration of basement-involved foreland deformation, and to evolution of deformation within each regional brittle–ductile megashear zone.

In the Sierra de los Colorados area, the complex time-spatial interplay of different basement-controlling structures overprinting an early thin-skinned deformation stage results in a mosaic-style structural grain that could explain the heterogeneous pattern of some geological features (e.g. a tectonic block rotation pattern departing from the CARP).

The unusual thickness of the Neogene sedimentary pile in the Sierra de los Colorados area could alternatively be explained by the accumulative effect of recurrent episodes of subsidence, linked to both the Precordillera and the Sierras Pampeanas deformation stages. In this way, alternating regional flexural and local topographic load subsidence as well as sublithospheric mechanisms could have contributed to the thickest sediment accumulation within the Pampean flat-slab segment.

Acknowledgements. This research was funded by the CONICET (M.S.J., grant nos. PIP 6411, PIP 11420100100334) and the Universidad de Buenos Aires (G.H.R., grant no. UBACyT N820020120200157). The authors extend their gratitude to R. Allmendinger and R. Holcombe for free access to structural analysis software,

to Luis Fauqué and SEGEMAR for access to recently published data and to Eduardo Urriche for helpful support during fieldwork. We are also grateful to the two anonymous reviewers for constructive reviews, as well as to the editors for the editorial work.

References

- ABBRUZZI, J. M., KAY, S. M. & BICKFORD, M. E. 1993. Evidence of a Grenville age island arc basement in Precordillera, San Juan Province, Argentina. *Abstracts with Program, Geological Society of America* **25**, 232–3.
- ACEÑOLAZA, F. G., MILLAR, H. & TOSELLI, A. J. 1996. Geología del Sistema de Famatina. *Münchner Geologische Hefte* **A19**, 1–410.
- ALLMENDINGER, R. W. 1986. Tectonic development, southeastern border of the Puna plateau, northwest Argentina Andes. *Geological Society of America Bulletin* **97**, 1070–82.
- ALLMENDINGER, R. W., FIGUEROA, D., SNYDER, D., BEER, J., MPODOZIS, C. & ISACKS, B. L. 1990. Foreland shortening and crustal balancing in the Andes at 30° S latitude. *Tectonics* **9**, 789–809.
- ALONSO, M. S., LIMARINO, C. O., LITVAK, V. D., POMA, S. M., SURIANO, J. & REMESAL, M. B. 2011. Paleogeographic, magmatic and paleoenvironmental scenarios at 30° S during the Andean orogeny: cross sections from the volcanic-arc to the orogenic front (San Juan, Argentina). In *Cenozoic Geology of the Central Andes of Argentina* (eds J. A. Salfity & R. A. Marquillas), pp. 23–45. Salta: SCS Publisher.
- ALVARADO, P., BECK, S. & ZANDT, G. 2007. Crustal structure of the south-central Andes Cordillera and backarc region from regional waveform modeling. *Geophysical Journal International* **170**, 858–75.
- ALVARADO, P. M. & RAMOS, V. A. 2010. La estructura ándica de las Sierras Pampeanas basada en mecanismos focales de terremotos en su región noroeste. *Revista de la Asociación Geológica Argentina* **67**, 461–72.
- ALVARADO, P. M. & RAMOS, V. A. 2011. Earthquake deformation in the northwestern Sierras Pampeanas of Argentina based on seismic waveform modeling. *Journal of Geodynamics* **51**, 205–18.
- ÁLVAREZ-MARRÓN, J., RODRÍGUEZ-FERNÁNDEZ, R., HEREDIA, N., BUSQUETS, P., COLOMBO, F. & BROWN, D. 2006. Neogene structures overprinting Palaeozoic thrust systems in the Andean Precordillera at 30° S latitude. *Journal of the Geological Society of London* **163**, 949–64.
- AMMIRATI, J. B., ALVARADO, P. M. & BECK, S. 2015. A lithospheric velocity model for the flat slab region of Argentina from joint inversion of Rayleigh wave phase velocity dispersion and teleseismic receiver functions. *Geophysical Journal International* **202**, 224–41.
- AMMIRATI, J. B., ALVARADO, P., PERARNAU, M., SÁEZ, M. & MONSALVO, G. 2013. Crustal structure of the Central Precordillera of San Juan, Argentina (31° S) using teleseismic receiver functions. *Journal of South American Earth Sciences* **46**, 100–9.
- ANDERSON, T. B. 1974. The relationship between kink-bands and shear fractures in the experimental deformation of slate. *Journal of the Geological Society of London* **130**, 367–82.
- AUBRY, L., ROPERCH, P., URREIZTIETA, M., ROSSELLO, E. A. & CHAUVIN, A. 1996. Paleomagnetic study along the southeastern edge of the Altiplano-Puna Plateau:

- Neogene tectonic rotations. *Journal of Geophysical Research* **101**, 17,883–99.
- AZCURRA, D., CASTRO-GODOY, S., CANDIANI, J. C., CARRIZO, A. & NAKAYIMA, K. 2005. Procesamiento de imágenes Aster del área de Sierra de Famatina, provincia de La Rioja, República Argentina. *Contribuciones Técnicas del Proyecto GEOSAT-AR*, pp. 63–9. Buenos Aires: Servicio Geológico Minero Argentino.
- BAILLY, V., PUBELLIER, M., RINGENBACH, J-C, DE SIGOYER, J. & SAPIN, F. 2009. Deformation zone ‘jumps’ in a young convergent setting: the Lengguru fold-and-thrust belt, New Guinea Island. *Lithos* **113**, 306–17.
- BALDIS, B. A., BERESI, M., BORDONARO, L. O. & VACA, A. 1982. Síntesis evolutiva de la Precordillera Argentina. *5° Congreso Latinoamericano de Geología Argentina* **4**, 399–445. Buenos Aires.
- BALDIS, B. A. & CHEBLI, G. 1969. Estructura profunda del área central de la Precordillera sanjuanina. *4° Jornadas Geológicas Argentinas* **1**, 47–66. Mendoza.
- BENSE, F. A., LÖBENS, S., DUNKL, I., WEMMER, K. & SIEGSMUND, S. 2013. Is the exhumation of the Sierras Pampeanas only related to Neogene flat-slab subduction? Implications from a multi-thermochronological approach. *Journal of South American Earth Sciences* **48**, 123–44.
- BENSE, F. A., WEMMER, K., LÖBENS, S. & SIEGSMUND, S. 2014. Fault gouge analyses: K–Ar illite dating, clay mineralogy and tectonic significance – a study from the Sierras Pampeanas, Argentina. *International Journal of Earth Sciences* **103**, 189–218.
- BERGER, Z. 2001. Detection and analysis of cross-strike discontinuities in fold belt regions. *Canadian Society of Petroleum Geologists Annual Convention, Extended Abstracts* **17**.
- BILLA, M., CASSARD, D., LIPS, A. L. W., BOUCHOT, V., TOURLIÈRE, B., STEIN, G. & GUILLOU-FROTTIER, L. 2004. Predicting gold-rich epithermal and porphyry systems in the Central Andes with a continental-scale metallogenic GIS. *Ore Geology Reviews* **25**, 39–67.
- BROOKS, B. A., BEVIS, M. *et al.* 2003. Crustal motion in the southern Andes (26°–36° S): do the Andes behave like a microplate? *Geochemistry, Geophysics, Geosystems* **4**, 1085. doi: [10.1029/2003GC000505](https://doi.org/10.1029/2003GC000505).
- BURCHFIELD, B. L. & DAVIES, G. A. 1975. Nature and controls of Cordilleran orogenesis, western United States: extensions of an earlier synthesis. *American Journal of Science* **275-A**, 363–96.
- CAMINOS, R., NULLO, F. E., PANZA, J. L. & RAMOS, V. A. 1993. *Mapa Geológico de la Provincia de San Juan. Escala 1:500.000*. Buenos Aires: Servicio Geológico y Minero de Argentina.
- CANDIANI, J. C., ASTINI, R. A., DÁVILA, F. M., COLLO, G., EZPELETA, M., ALASINO, P. & DAHLQUIST, J. 2011. *Hojas Geológicas 2969-18 y 2969-24 Famatina y Sañogasta*. Instituto de Geología y Recursos Minerales, Servicio Geológico Minero Argentino, Boletín 379, 150 pp.
- CASA, A., YAMÍN, M., WRIGHT, E., COSTA, C., COPPOLECCIA, M. & CEGARRA, M. 2011. *Deformaciones Cuaternarias de la República Argentina, Sistema de Información Geográfica*. Buenos Aires: Instituto de Geología y Recursos Minerales, Servicio Geológico Minero Argentino, digital publication, 171.
- CHERNICOFF, C. J. & NASH, C. R. 2002. Geological interpretation of Landsat TM imagery and aeromagnetic survey data, northern Precordillera region, Argentina. *Journal of South American Earth Sciences* **14**, 813–20.
- CHERNICOFF, C. J., RICHARDS, J. P. & ZAPPETTINI, E. O. 2002. Crustal lineament control on magmatism and mineralization in northwestern Argentina: geological, geophysical, and remote sensing evidence. *Ore Geology Reviews* **21**, 127–55.
- CICCIOLI, P. L., GÓMEZ O’CONNELL, M., LIMARINO, C. O. & MARENSSI, S. A. 2013b. La sucesión terciaria de la quebrada de Los Pozuelos (Cuenca de Vinchina): su importancia estratigráfica y paleogeográfica para el antepaís andino. *Revista de la Asociación Geológica Argentina* **70**, 451–64.
- CICCIOLI, P. L., LIMARINO, C. O. & FRIEDMAN, R. 2012. La edad de la Formación Vinchina: su implicancia en la estratigrafía de la cuenca de antepaís del Bermejo. 1° Simposio del Mioceno-Pleistoceno del Centro y Norte de Argentina. *Ameghiniana* **49**, 7. Tucumán.
- CICCIOLI, P. L., LIMARINO, C. O., FRIEDMAN, R. & MARENSSI, S. A. 2014. New high precision U-Pb ages for the Vinchina Formation: implications for the stratigraphy of the Bermejo Andean foreland basin (La Rioja province, western Argentina). *Journal of South American Earth Sciences* **56**, 200–13.
- CICCIOLI, P. L., LIMARINO, C. O., MARENSSI, S. A., TEDESCO, A. M. & TRIPALDI, A. 2011. Tectosedimentary evolution of the La Troya and Vinchina depocenters (northern Bermejo Basin, Tertiary), La Rioja, Argentina. In *Cenozoic Geology of the Central Andes of Argentina* (eds J. A. Salfity & R. A. Marquillas), pp. 91–110. Salta: SCS Publisher.
- CICCIOLI, P. L. & MARENSSI, S. A. 2012. Paleoambientes sedimentarios de la Formación Toro Negro (Neógeno), antepaís fracturado andino, noroeste argentino. *Andean Geology* **39**, 407–41.
- CICCIOLI, P. L., MARENSSI, S. A., ROSSELLO, E. A. & LIMARINO, C. O. 2013a. Sedimentary patterns in the Vinchina Basin: interplay between compressional and transcurrent tectonism during the Andean Orogeny. *Bollettino di Geofisica Teorica ed Applicata* **54** (suppl. 2), 217–20.
- COBBOLD, P. R., COSGROVE, J. W. & SUMMERS, J. M. 1971. Development of internal structures in deformed anisotropic rocks. *Tectonophysics* **12**, 23–53.
- COLLO, G., DÁVILA, F. M., EZPELETA, M. & TEIXEIRA, W. 2014. U-Pb detrital ages on tuffaceous and sandstone levels from a Neogene foreland basin of the Central Andes of Argentina. *Comunicações Geológicas* **101**, Especial I, 405–7.
- COLLO, G., DÁVILA, F. M., NÓBILE, J., ASTINI, R. A. & GEHRELS, G. 2011. Clay mineralogy and thermal history of the Neogene Vinchina Basin, central Andes of Argentina: analysis of factors controlling the heating conditions. *Tectonics* **30**, TC4012. doi: [10.1029/2010TC002841](https://doi.org/10.1029/2010TC002841).
- COLLO, G., DÁVILA, F. M., TEIXEIRA, W., NÓBILE, J. C., SANT’ANNA, L. G. & CARTER, A. 2015. Isotopic and thermochronologic evidence of extremely cold lithosphere associated with a slab flattening in the Central Andes of Argentina. *Basin Research*, published online 26 November 2015. doi: [10.1111/br.12163](https://doi.org/10.1111/br.12163).
- CONEY, P. J. 1972. Cordilleran tectonics and North American plate motion. *American Journal of Science* **272**, 603–28.
- CORTÉS, J. M., CASA, A., PASINI, M. M., YAMÍN, M. G. & TERRIZZANO, C. M. 2006. Fajas oblicuas de deformación neotectónica en Precordillera y Cordillera Frontal (31°30’–33°30’ LS). Controles paleotectónicos. *Revista de la Asociación Geológica Argentina* **61**, 639–46.
- CORTÉS, J. M., CASA, A. L., YAMÍN, M. G., PASINI, M. M. & TERRIZZANO, C. M. 2014. Unidades morfotectónicas,

- estructuras oblicuas y patrones de distribución de la deformación cuaternaria en la Precordillera de Cuyo (28°–33°S). *19° Congreso Geológico Argentino*, S20–14, Córdoba, 2 pp.
- CORTÉS, J. M. & CEGARRA, M. 2004. Plegamiento cuaternario transpresivo en el piedemonte suroccidental de la Precordillera sanjuanina. In *Avances en Microtectónica* (eds J. M. Cortés, E. A. Rossello & L. H. Dalla Salda), pp. 68–75. Asociación Geológica Argentina, Buenos Aires Serie D, Publicación Especial 7.
- CORTÉS, J. M., PASINI, M. & YAMÍN, M. 2005. Paleotectonic controls on the distribution of Quaternary deformation in the southern Precordillera, Central Andes (31°30'–33°SL). *6th International Symposium on Andean Geodynamics*, pp. 186–9. Barcelona: IRD Éditions.
- COUGHLIN, T. J., O'SULLIVAN, P. B., KOHN, B. P. & HOLCOMBE, R. J. 1998. Apatite fission-track thermochronology of the Sierras Pampeanas, central western Argentina: implications for the mechanism of plateau uplift in the Andes. *Geology* **26**, 999–1002. doi: [10.1130/0091-7613\(1998\)026<0999:AFTTOT>2.3.CO;2](https://doi.org/10.1130/0091-7613(1998)026<0999:AFTTOT>2.3.CO;2).
- CRISTALLINI, E. O. & RAMOS, V. A. 1995. Structural cross-section of Río San Juan. In *Field Guide to the Geology of Precordillera Folded and Thrust Belt (Central Andes)* (ed. V. A. Ramos). Buenos Aires: ICL-COMTEC-AGA.
- CRISTALLINI, E. O. & RAMOS, V. A. 2000. Thick-skinned and thin-skinned thrusting in La Ramada fold and thrust belt: crustal evolution of the high Andes of San Juan, Argentina (32°SL). *Tectonophysics* **317**, 205–35.
- DÁVILA, F. M. 2010. Dynamics of deformation and sedimentation in the northern Sierras Pampeanas: an integrated study of the Neogene Fiambalá basin, NW Argentina: discussion. *Geological Society of America Bulletin* **122**, 946–9.
- DÁVILA, F. M. & ASTINI, R. A. 2002. Estratigrafía de la Formación del Crestón, Sierra de Famatina, Argentina: sedimentación paleógena en el antepaís andino. *Revista de la Asociación Geológica Argentina* **57**, 463–83.
- DÁVILA, F. M. & ASTINI, R. A. 2003. Discordancias progresivas en los depósitos pre-neógenos del Famatina (Formación del Crestón), La Rioja, Argentina y su implicancia en la evolución del antepaís andino. *Revista de la Asociación Geológica Argentina* **58**, 109–16.
- DÁVILA, F. M. & ASTINI, R. A. 2007. Cenozoic provenance history of synorogenic conglomerates in western Argentina (Famatina belt): implications for Central Andean foreland development. *Geological Society of America Bulletin* **119**, 609–22.
- DÁVILA, F. M., ASTINI, R. A. & JORDAN, T. E. 2005. Cargas subcorticales en el antepaís andino y la planicie pampeana: evidencias estratigráficas, topográficas y geofísicas. *Revista de la Asociación Geológica Argentina* **60**, 775–86.
- DÁVILA, F. M., ASTINI, R. A., JORDAN, T. E., GEHRELS, G. & EZPELETA, M. 2007. Miocene forebulge development previous to the broken foreland partitioning in the southern Central Andes, west-central Argentina. *Tectonics* **26**, TC5016. doi: [10.1029/2007TC002118](https://doi.org/10.1029/2007TC002118).
- DÁVILA, F. M., ASTINI, R. A., JORDAN, T. E. & KAY, S. M. 2004. Early Miocene andesite conglomerates in the Sierra de Famatina, broken foreland region of western Argentina, and documentation of magmatic broadening in the south Central Andes. *Journal of South American Earth Sciences* **17**, 89–101.
- DÁVILA, F. M. & CARTER, A. 2013. Exhumation history of the Andean broken foreland revisited. *Geology* **41**, 443–6.
- DÁVILA, F. M., LITHGOW-BERTELLONI, C. & GIMÉNEZ, M. 2010. Tectonic and dynamic controls on the topography and subsidence of the Argentine Pampas: the role of the flat slab. *Earth and Planetary Science Letters* **295**, 187–94.
- DE ALBA, E. 1979. *Descripción geológica de la hoja 16d, Chilecito (Provincia de La Rioja)*. Servicio Geológico Nacional, Boletín 163, 84 pp.
- DEMETS, C., GORDON, R. G., ARGUS, D. F. & STEIN, S. 1990. Current plate motions. *Geophysical Journal* **101**, 425–78.
- DURAND, F. R., TOSELLI, A. J. & ACEÑOLAZA, F. G. 1987. Las estructuras de la quebrada de Miranda y sus relaciones regionales, Sistema de Famatina, provincia de La Rioja, Argentina. *Revista Geológica de Chile* **31**, 21–9.
- FAUQUÉ, L. E., CAMINOS, R., HERMANN, C., PEZZUTTI, N., GODEAS, M., SATO, A. M. & FRANCHINI, M. 2006. *Hoja Geológica 2969-II Tinogasta*. Instituto de Geología y Recursos Minerales, Servicio Geológico Minero Argentino, Boletín 276, 130 pp.
- FAUQUÉ, L. E., LIMARINO, C. O., VUJOVICH, G. I., CEGARRA, M. & ESCOSTEGUY, L., 2016. *Hoja Geológica 2969-IV Villa Unión, Provincias de La Rioja y San Juan*. Servicio Instituto de Geología y Recursos Minerales, Servicio Geológico Minero Argentino, Boletín 422, 136 pp.
- FERNÁNDEZ SEVESO, F., PÉREZ, M. A., BRISSON, I. E. & ALVAREZ, L. 1993. Sequence stratigraphy and tectonic analysis of the Paganzo basin, western Argentina. *Comptes Rendues 12° International Congress on Carboniferous-Permian Stratigraphy and Geology* **2**, 223–60, Buenos Aires.
- FERNÁNDEZ SEVESO, F. & TANKARD, A. J. 1995. Tectonics and stratigraphy of the Late Paleozoic Paganzo basin of western Argentina and its regional implications. In *Petroleum Basins of South America* (eds A. J. Tankard, S. Suárez & H. J. Welsink), pp. 285–301. American Association of Petroleum Geology, Memoir 62.
- FURQUE, G. 1963. *Descripción geológica de la Hoja 17b, Guandacol*. Dirección Nacional de Geología y Minería, Boletín, Buenos Aires, 105 pp.
- GANS, C. R., BECK, S. L., ZANDT, G., GILBERT, H., ALVARADO, P., ANDERSON, M. & LINKIMER, L. 2011. Continental and oceanic crustal structure of the Pampean flat slab region, western Argentina, using receiver function analysis: new high-resolution results. *Geophysical Journal International* **186**, 45–58.
- GAY, N. C. & WEISS, L. E. 1974. The relationship between principal stress directions and the geometry of kinks in foliated rocks. *Tectonophysics* **21**, 287–300.
- GIAMBIAGI, L., LOSSADA, A., MAZZITELLI, M., TOURAL DAPOZA, R., SPAGNOTTO, S., MOREIRAS, S. M., GÓMEZ, G., STAHLSCHEIDT, E. & MESCUA, J. 2014. Variaciones espaciales en los campos de esfuerzos y de deformación en el antepaís andino, en el segmento de transición entre las zonas de subducción subhorizontal y normal. *19° Congreso Geológico Argentino, Simposio Subducción horizontal en el segmento andino 27°–33°S: un enfoque multidisciplinario*, S20–6, 2 pp. Córdoba.
- GIMENEZ, M., MARTINEZ, M. P. & INTROCASO, A. 2000. A crustal model based mainly on gravity data in the area between the Bermejo Basin and the Sierras de Valle Fértil – Argentina. *Journal of South American Earth Sciences* **13**, 275–86.
- GUTSCHER, M.-A. 2002. Andean subduction styles and their effect on thermal structure and interplate coupling. *Journal of South American Earth Sciences* **15**, 3–10.

- HILLEY, G. E., BLISNIUK, P. M. & STRECKER, M. R. 2005. Mechanics and erosion of basement-cored uplift provinces. *Journal of Geophysical Research* **110**, B12409. doi: [10.1029/2005JB003704](https://doi.org/10.1029/2005JB003704).
- HÖCKENREINER, M., SÖLLNER, F. & MILLER, H. 2003. Dating the TiPA shear zone. An Early Devonian terrane boundary between the Famatinian and Pampean systems (NW Argentina). *Journal of South American Earth Sciences* **16**, 45–66.
- HOLLISTER, L. S. & CRAWFORD, M. L. 1986. Melt-enhanced deformation: a major tectonic process. *Geology* **14**, 558–61.
- INTROCASO, A. & RUIZ, F. 2001. Geophysical indicators of Neogene strike-slip faulting in the Desaguadero-Bermejo tectonic lineament (northwestern Argentina). *Journal of South American Earth Sciences* **14**, 655–63.
- ISACKS, B., JORDAN, T. E., ALLMENDINGER, R. W. & RAMOS, V. A. 1982. La segmentación tectónica de los Andes Centrales y su relación con la placa de Nazca subductada. *5° Congreso Latinoamericano de Geología* **3**, 587–606. Buenos Aires.
- JAPAS, M. S. 1998. Aporte del análisis de fábrica deformacional al estudio de la faja orogénica andina. Homenaje al Dr. Arturo J. Amos. *Revista de la Asociación Geológica Argentina* **53**, 15.
- JAPAS, M. S., ORIOLO, S. & SRUOGA, P. 2012. Análisis cromático de la fábrica de fracturación. *15° Reunión de Tectónica*, 72–3. San Juan.
- JAPAS, M. S. & RÉ, G. H. 2012a. Margin curvature at 28–33° SL induced by oblique subduction of the Juan Fernández aseismic ridge: paleomagnetic constraints. *8th International Symposium in Andean Geodynamics*. Antofagasta, Chile.
- JAPAS, M. S. & RÉ, G. H. 2012b. Neogene tectonic block rotations and margin curvature at the Pampean flat slab segment (28°–33° SL, Argentina). *Geoacta* **37**, 1–4.
- JAPAS, M. S., RÉ, G. H. & BARREDO, S. P. 2002. Lineamientos andinos oblicuos (entre 22° S y 33° S) definidos a partir de fábricas tectónicas. I. Fábricas deformacional y de sismicidad. *15° Congreso Geológico Argentino* **1**, 326–31. El Calafate.
- JAPAS, M. S., RÉ, G. H., ORIOLO, S. & VILAS, J. F. 2015. Palaeomagnetic data from the Precordillera fold and thrust belt constraining Neogene foreland evolution of the Pampean flat-slab segment (Central Andes, Argentina). In *Palaeomagnetism in Fold and Thrust Belts: New Perspectives* (eds E. L. Pueyo, F. Cifelli, A. J. Sussman & B. Oliva-Urcia). Geological Society of London, Special Publication no. 425. doi: [10.1144/SP425.9](https://doi.org/10.1144/SP425.9).
- JAPAS, M. S., RÉ, G. H., VILAS, J. F. & ORIOLO, S. 2014. Rotaciones tectónicas neógenas y curvatura del margen en el segmento de subducción horizontal Pampeano (27°–33° S). *19° Congreso Geológico Argentino, Simposio Subducción horizontal en el segmento andino 27°–33° S: un enfoque multidisciplinario*, S20, 2 pp. Córdoba.
- JAPAS, M. S., RUBINSTEIN, N. A. & KLEIMAN, L. E. 2013. Strain fabric analysis applied to hydrothermal ore deposits emplaced during changing geodynamical conditions (Infiernillo and Las Picazas, San Rafael Massif, Argentina). *Ore Geology Reviews* **53**, 357–72.
- JAPAS, M. S., URBINA, N. E. & SRUOGA, P. 2010. Control estructural en el emplazamiento del volcanismo y mineralizaciones neógenas, distrito Cañada Honda, San Luis. *Revista de la Asociación Geológica Argentina* **67**, 494–506.
- JAPAS, M. S., URBINA, N. E., SRUOGA, P. & GALLARD, M. C. 2011a. *Pull apart* La Carolina, Faja Volcánica Terciaria, San Luis. *18° Congreso Geológico Argentino*, 786–7. Neuquén.
- JAPAS, M. S., URBINA, N. E., SRUOGA, P. & GALLARD, M. C. 2011b. La Carolina pull-apart in western Tertiary Volcanic Belt, Pampean Flat Slab (33° S), Argentina. *22° Lateinamerika Kolloquium*. Heidelberg, 110 pp.
- JORDAN, T. E. & ALLMENDINGER, R. W. 1986. The Sierras Pampeanas of Argentina: a modern analogue of Laramide deformation. *American Journal of Science* **286**, 737–64.
- JORDAN, T. E., ALLMENDINGER, R. W., DAMANTI, J. F. & DRAKE, R. 1993. Chronology of motion in a complete thrust belt: the Precordillera, 30–318 S, Andes Mountains. *Journal of Geology* **101**, 135–56.
- JORDAN, T. E., ISACKS, B., RAMOS, V. A. & ALLMENDINGER, R. W. 1983. Mountain building in the Central Andes. *Episodes* **1983**, 20–6.
- JORDAN, T. E., SCHLUNEGGER, F. & CARDOZO, N. 2001. Unsteady and spatially variable evolution of the Neogene Andean Bermejo foreland basin, Argentina. *Journal of South American Earth Sciences* **14**, 775–98.
- KAY, S. M. & ABBRUZZI, J. M. 1996. Magmatic evidence for Neogene lithospheric evolution of the Central Andean flat-slab between 30 and 32° S. *Tectonophysics* **259**, 15–28.
- KAY, S. M., ORRELL, S. & ABRUZZI, J. M. 1996. Zircon and whole rock Nd-Pb isotopic evidence for a Grenville age and Laurentia origin for the basement of the Precordillera terrane in Argentina. *Journal of Geology* **104**, 637–48.
- KLEIMAN, L. E. & JAPAS, M. S. 2009. The Choiyoi volcanic province at 34–36° S (San Rafael, Mendoza, Argentina): implications for the late Palaeozoic evolution of the southwestern margin of Gondwana. *Tectonophysics* **473**, 283–99.
- KRAEMER, P., SILVESTRO, J., ACHILLI, F. & BRINKWORTH, W. 2011. Kinematics of a hybrid thick-thin-skinned fold and thrust belt recorded in Neogene syntectonic top-wedge basins, southern central Andes between 35° and 36° S, Malargüe, Argentina. In *Thrust Fault-related Folding* (eds K. McClay, J. H. Shaw & J. Suppe), pp. 245–70. American Association of Petroleum Geology, Memoir 94.
- KUSZNIR, N. J. & PARK, R. G. 1986. The extensional strength of the continental lithosphere: its dependence on geothermal gradient, and crustal composition and thickness. In *Continental Extension Tectonics* (eds M. P. Coward, J. F. Dewey & P. L. Hancock), pp. 35–52. Geological Society of London, Special Publication no. 28.
- LACOMBE, O. & MOUTHEREAU, F. 2002. Basement-involved shortening and deep detachment tectonics in forelands of orogens: insights from recent collision belts (Taiwan, Western Alps, Pyrenees). *Tectonics* **21**, 1030. doi: [10.1029/2001TC901018](https://doi.org/10.1029/2001TC901018).
- LARA, L. E., LAVENU, A., CEMBRANO, J. & RODRÍGUEZ, C. 2006. Structural controls of volcanism in transversal chains: resheared faults and neotectonics in the Cordón Caille-Puyehue area (40.5° S), Southern Andes. *Journal of Volcanology and Geothermal Research* **158**, 70–86.
- LEVERATTO, M. A. 1968. Geología de la zona al oeste de Ullim-Zonda, borde oriental de la Precordillera de San Juan, eruptividad subvolcánica y estructura. *Revista de la Asociación Geológica Argentina* **18**, 129–58.
- LIMARINO, C. O., CICCIOLO, P. L. & MARENSSI, S. A. 2010. Análisis del contacto entre las formaciones Vinchina y Toro Negro (Sierra de los Colorados, provincia de La Rioja, Argentina), sus implicancias tectónicas. *Latin*

- American Journal of Sedimentology and Basin Analysis* **17**, 113–32.
- LIMARINO, C., TRIPALDI, A., MARENSSI, S., NET, L., RE, G. & CASELLI, A. 2001. Tectonic control on the evolution of fluvial systems of the Vinchina Formation (Miocene), northwestern Argentina. *Journal of South American Earth Sciences* **14**, 751–62.
- LLAMBIAS, E. J. 1970. Geología de los yacimientos mineros Agua de Dionisio, provincia de Catamarca, República Argentina. *Revista de la Asociación Argentina de Mineralogía, Petrografía y Sedimentología* **1**, 2–32.
- LLAMBIAS, E. J. 1972. Estructura del grupo volcánico Farallón Negro, Catamarca, República Argentina. *Revista de la Asociación Geológica Argentina* **27**, 161–9.
- LÖBENS, S., BENSE, F. A., DUNKL, I., WEMMER, K., KLEY, J. & SIEGSMUND, S. 2013b. Thermochronological constraints of the exhumation and uplift of the Sierra de Pie de Palo, NW Argentina. *Journal of South American Earth Sciences* **48**, 209–19.
- LÖBENS, S., BENSE, F. A., WEMMER, K., DUNKL, I., COSTA, C. H., LAYER, P. & SIEGSMUND, S. 2011. Exhumation and uplift of the Sierras Pampeanas: preliminary implications from K–Ar fault gouge dating and low-T thermochronology in the Sierra de Comechingones (Argentina). *International Journal of Earth Science* **100**, 671–94.
- LÖBENS, S., SOBEL, E. R., BENSE, F. A., WEMMER, K., DUNKL, I. & SIEGSMUND, S. 2013a. Refined exhumation history of the northern Sierras Pampeanas, Argentina. *Tectonics* **32**, 453–72.
- LÓPEZ, J. P. & TOSELLI, A. J. 1993. La faja milonítica TiPA: faldeo oriental del Sistema de Famatina. *12° Congreso Geológico Argentino y 2° Congreso de Exploración de Hidrocarburos* **3**, 39–42. Mendoza.
- LOSADA-CALDERÓN, A. & BLOOM, M. S. 1990. Geology, paragenesis and fluid inclusion studies of a high sulfidation epithermal/porphyry system, Nevados del Famatina District, La Rioja Province, Argentina. *Pacific Rim Congress* **90**, 2, 457–64. Brisbane, Australia: Australasian Institute of Mining and Metallurgy.
- LOSADA-CALDERÓN, A. J., MCBRIDE, S. L. & BLOOM, M. S. 1994. The geology and ^{40}Ar – ^{39}Ar geochronology of magmatic activity and related mineralization in the Nevados del Famatina mining district, La Rioja Province, Argentina. *Journal of South American Earth Sciences* **7**, 9–24. doi: [10.1016/0895-9811\(94\)90030-2](https://doi.org/10.1016/0895-9811(94)90030-2).
- LOSADA-CALDERÓN, A. J. & MCPHAIL, D. C. 1996. Porphyry and high-sulfidation epithermal mineralization in the Nevados del Famatina Mining District, Argentina. In *Andean Copper Deposits: New Discoveries, Mineralization, Styles and Metallogeny* (eds F. Camus, R. H. Sililitoe & R. Petersen), pp. 91–117. Society of Economic Geologists, Special Publication 5.
- MADRITSCH, H., SCHMID, S. M. & FABBRI, O. 2008. Interactions between thin- and thick-skinned tectonics at the northwestern front of the Jura fold-and-thrust belt (eastern France). *Tectonics* **27**, TC5005. doi: [10.1029/2008TC002282](https://doi.org/10.1029/2008TC002282).
- MALIZIA, D. C., REYNOLDS, J. H. & TABBUTT, K. D. 1995. Chronology of Neogene sedimentation, stratigraphy, and tectonism in the Campo de Talampaya region, La Rioja Province, Argentina. *Sedimentary Geology* **96**, 231–55.
- MARENSSI, S. A., CICCIOLO, P. L., LIMARINO, C. O., SCHENCMAN, L. J. & DÍAZ, M. Y. 2015. Using fluvial cyclicity to decipher the interaction of basement- and fold-thrust-belt tectonics in a broken foreland basin: Vinchina Formation (Miocene), Northwestern Argentina. *Journal of Sedimentary Research* **85**, 361–80.
- MARENSSI, S. A., NET, L., CASELLI, A., TRIPALDI, A. & LIMARINO, C. O. 2000. Hallazgo de discordancias intraformacionales en la Formación Vinchina (Neógeno), quebrada de La Troya, La Rioja, Argentina. *Revista de la Asociación Geológica Argentina* **55**, 414–8.
- MARTINA, F., DÁVILA, F. M. & ASTINI, R. A. 2006. Mio-Pliocene volcanoclastic deposits in the Famatina Ranges, southern Central Andes: a case of volcanic controls on sedimentation in broken foreland basins. *Sedimentary Geology* **186**, 51–65.
- MAURIN, T. & RANGIN, C. 2009. Structure and kinematics of the Indo-Burmese Wedge: Recent and fast growth of the outer wedge. *Tectonics* **28**, TC2010. doi: [10.1029/2008TC002276](https://doi.org/10.1029/2008TC002276).
- MAZZOLI, S., CORRADO, S., DE DONATIS, M., SCROCCA, D., BUTLER, R. W. H., DI BUCCI, D., NASO, G., NICOLAI, C. & ZUCCONI, V. 2000. Time and space variability of «thin-skinned» and «thick-skinned» thrust tectonics in the Apennines (Italy). *Rendiconti Lincei – Scienze Fisiche e Naturali* **11**, 5–39.
- MCCLAY, K. R. 1992. *Thrust Tectonics*. London: Chapman & Hall, 447 pp.
- MOLINARO, M., LETURMY, P., GUEZOU, J.-C. & FRIZON DE LAMOTTE, D. 2005. The structure and kinematics of the southeastern Zagros foldthrust belt, Iran: from thin-skinned to thick-skinned tectonics. *Tectonics* **24**, TC3007. doi: [10.1029/2004TC001633](https://doi.org/10.1029/2004TC001633).
- MON, R. 1976. La tectónica del borde oriental de los Andes, en las provincias de Salta, Tucumán y Catamarca, República Argentina. *Revista de la Asociación Geológica Argentina* **31**, 65–72.
- MORTIMER, E., CARRAPA, B., COUTAND, I., SCHOENBOHM, L., SOBEL, E. R., SOSA-GÓMEZ, J. & STRECKER, M. R. 2007. Fragmentation of a foreland basin in response to out-of-sequence basement uplift and structural reactivation: El Cajón–Campo del Arenal basin, NW Argentina. *Geological Society of America Bulletin* **119**, 637–53.
- NÓBILE, J. & DÁVILA, F. M. 2012. Uplift history of the northern Sierras Pampeanas broken foreland using river profile modelling. *13° Congreso Geológico Chileno*, 271–3.
- ORIOLO, S., CRISTALLINI, E. O., JAPAS, M. S. & YAGUPSKY, D. 2015. Neogene structure of the Andean Precordillera, Argentina: insights from analogue models. *Andean Geology* **42**, 20–35.
- ORIOLO, S., JAPAS, M. S., CRISTALLINI, E. O. & GIMÉNEZ, M. 2014. Cross-strike structures controlling magmatism emplacement in a flat-slab setting (Precordillera, Central Andes of Argentina). In *Deformation Structures and Processes within the Continental Crust* (eds S. Llana-Fúnez, A. Marcos & F. Bastida), pp. 113–27. Geological Society of London, Special Publication no. 394.
- ORTIZ, G., ALVARADO, P. M., FOSDICK, J. C., PERUCCA, L., SAEZ, M. & VENERDINI, A. 2015. Active deformation in the northern Sierra de Valle Fértil, Sierras Pampeanas, Argentina. *Journal of South American Earth Sciences* **64**, 339–50.
- ORTIZ, A. & ZAMBRANO, J. 1981. La provincia geológica de Precordillera Oriental. *8° Congreso Geológico Argentino* **3**, 59–74. San Luis.
- PERUCCA, L. P. & RUIZ, F. 2014. New data on neotectonic contractional structures in Precordillera, south of Río de La Flecha: structural setting from gravity and magnetic data. San Juan, Argentina. *Journal of South American Earth Sciences* **50**, 1–11.
- PESCE, A. H. & MIRANDA, F. 2003. *Catálogo de Manifestaciones Termales de la República Argentina. Volumen*

- I: *Región Noroeste, Provincias de Jujuy, Salta, Catamarca, Tucumán, Santiago del Estero, La Rioja y San Juan*. Anales del Instituto de Geología y Recursos Minerales del Servicio Geológico Minero Argentino 36, 165 pp.
- PETERSEN, C. S. & LEANZA, A. F. 1953. *Elementos de la geología aplicada*. Buenos Aires: Editorial Nigar, 466 pp.
- PIMENTA, S. 2008. *Micromechanics of Kink-band Formation*. Faculty of Engineering, University of Porto & Imperial College London, 142 pp.
- PORCHER, C. C., FERNANDES, L. A. D., VUJOVICH, G. I. & CHERNICOFF, C. J. 2004. Thermobarometry Sm/Nd ages and geophysical evidence for the location of the suture zone between Cuyania and the Western Proto-Andean Margin of Gondwana. *Gondwana Research* 7, 1057–76.
- PUDACK, C., HALTER, W. E., HEINRICH, C. A. & PETTKE, T. 2009. Evolution of magmatic vapor to gold-rich epithermal liquid: the porphyry to epithermal transition at Nevados de Famatina, northwest Argentina. *Economic Geology* 104, 449–77.
- RAGONA, D., ANSELMINI, G., GONZÁLEZ, P. & VUJOVICH, G. 1995. *Mapa Geológico de la Provincia de San Juan. Escala 1:500 000*. Buenos Aires: Servicio Geológico y Minero de Argentina.
- RAMOS, V. A. 1970. Estratigrafía y estructura de la sierra de Los Colorados, provincia de La Rioja. *Revista de la Asociación Geológica Argentina* 25, 359–82.
- RAMOS, V. A. 1992. Control geotectónico de las cuencas triásicas de Cuyo. *Boletín de Informaciones Petroleras, Tercera Epoca* 9, 2–9.
- RAMOS, V. A. 1999. Plate tectonic setting of the Andean Cordillera. *Episodes* 22, 183–90.
- RAMOS, V. A., CRISTALLINI, E. O. & PEREZ, D. J. 2002. The Pampean flat-slab of the Central Andes. *Journal of South American Earth Sciences* 15, 59–78.
- RAMOS, V. A., REYNOLDS, J. H., JORDAN, T. E. & TABBUTT, K. D. 1988. Pliocene uplift of the Sierras de Umango and Espinal, La Rioja Province Argentina. *Abstracts with Program, Geological Society of America* 20, A61.
- RAMSAY, J. G. & HUBER, M. I. 1987. *The Techniques of Modern Structural Geology: Folds and Fractures*. London: Academic Press, 391 pp.
- RAPELA, C. W., COIRA, B., TOSELLI, A. J. & LLAMBIAS, E. 1999. Sistema Famatiniano de las Sierras Pampeanas y magmatismo eopaleozoico de las Sierras Pampeanas, de la Cordillera Oriental y Puna. In *Geología Argentina* (ed. R. C. Caminos), pp. 145–58. Instituto de Geología y Recursos Minerales, Servicio Geológico Minero Argentino, Anales 29.
- RÉ, G. H. & BARREDO, S. 1993. Estudio magnetoestratigráfico y tasa de aedimentación del Grupo Iglesia en sus afloramientos aledaños a la localidad de Angualasto (Prov. de San Juan). *12° Congreso Geológico Argentino* 2, 148–55. Mendoza.
- RÉ, G. H., JAPAS, M. S. & BARREDO, S. P. 2000. Análisis de fábrica deformacional (AFD): el concepto fractal cualitativo aplicado a la definición de lineamientos cinemáticos neógenos en el noroeste argentino. *10° Reunión sobre Microtectónica, Resúmenes* 12.
- RÉ, G. H., JAPAS, M. S. & BARREDO, S. P. 2001. Análisis de fábrica deformacional (AFD): el concepto fractal cualitativo aplicado a la definición de lineamientos cinemáticos neógenos en el Noroeste Argentino. In *Avances en Microtectónica* (eds J. M. Cortés, E. A. Rossello & L. H. Dalla Salda), pp. 75–82. Asociación Geológica Argentina, Buenos Aires Serie D: Publicación Especial 5.
- RECHES, Z. & JOHNSON, A. M. 1976. A theory of concentric, kink and sinusoidal folding and of monoclinical flexuring of compressible elastic multilayers. VI. Asymmetric folding and monoclinical kinking. *Tectonophysics* 35, 295–334.
- REYNOLDS, J. H., JORDAN, T. E., JOHNSON, N. M. & TABBUTT, K. D. 1990. Neogene deformation of the flat-subduction segment of the Argentine-Chilean Andes: magnetostratigraphic constraints from Las Juntas, La Rioja, Argentina. *Geological Society of America Bulletin* 102, 1607–22.
- RILLER, U., PETRINOVIC, I., RAMELOW, J., STRECKER, M. & ONCKEN, O. 2001. Late Cenozoic tectonism, collapse caldera and plateau formation in the central Andes. *Earth and Planetary Science Letters* 188, 299–311.
- RODRÍGUEZ BRIZUELA, R. & TAUBER, A. 2006. Estratigrafía y mamíferos fósiles de la Formación Toro Negro (Neógeno), Departamento Vinchina, noroeste de la provincia de La Rioja, Argentina. *Ameghiniana* 43, 257–72.
- ROSSELLO, E. A., MOZETIC, M. E., COBBOLD, P. R., URREIZTIETA, M. & GAPAIS, D. 1996. El espón Umango-Maz y la conjugación sintaxial de los lineamientos Tucumán y Valle Fértil (La Rioja, Argentina). *13° Congreso Geológico Argentino y 3° Congreso de Hidrocarburos*, 2187–94. Buenos Aires.
- ROY, R., CASSARD, D., COBBOLD, P. R., ROSSELLO, E. A., BILLA, M., BAILLY, L. & LIPS, A. L. W. 2006. Predictive mapping for copper-gold magmatic-hydrothermal systems in NW Argentina: use of a regional-scale GIS, application of an expert-guided data-driven approach, and comparisons with results from a continental-scale GIS. *Ore Geology Reviews* 29, 260–86.
- SAINT BLANQUAT, M., TIKOFF, B., TEYSSIER, C. & VIGNERESSE, J. L. 1998. Transpressional kinematics and magmatic arcs. In *Continental Transpressional and Transtensional Tectonics* (eds R. E. Holdsworth, R. A. Strachan & J. F. Dewey), pp. 327–40. Geological Society of London, Special Publication no. 135.
- SAPIN, F., PUBELLIER, M., RINGENBACH, J.-C. & BAILLY, V. 2009. Alternating thin versus thick-skinned decollements, example in a fast tectonic setting: the Misool–Onin–Kumawa Ridge (West Papua). *Journal of Structural Geology* 31, 444–59.
- SASSO, A. M. & CLARK, A. H. 1998. The Farallón Negro Group, northwest Argentina: magmatic, hydrothermal and tectonic evolution and implications for Cu–Au metallogeny in the Andean back-arc. *Society of Economic Geologists Newsletter* 34, 7–18.
- SCHMIDT, C. J., ASTINI, R. A., COSTA, C. H., GARDINI, C. E. & KRAEMER, P. E. 1995. Cretaceous rifting, alluvial fan sedimentation, and Neogene inversion, southern Sierras Pampeanas, Argentina. In *Petroleum Basins of South America* (eds A. J. Tankard, S. Suárez & H. J. Welsink), pp. 341–58. American Association of Petroleum Geology, Memoir 62.
- SIAME, L. L., BELLIER, O., SEBRIER, M. & ARAUJO, M. 2005. Deformation partitioning in flau subduction setting: case of the Andean foreland of western Argentina (28°S–33°S). *Tectonics* 24, 1–24.
- SILLITOE, R. H. 1997. Characteristics and controls of the largest porphyry copper-gold and epithermal gold deposits in the circumPacific region. *Australian Journal of Earth Sciences* 44, 373–88.
- SILLITOE, R. H. & PERELLÓ, J. 2005. Andean copper province: tectonomagmatic settings, deposit types,

- metallogeology, exploration, and discovery. In *Economic Geology One Hundredth Anniversary Volume (1905–2005)* (eds J. W. Hedenquist, J. F. H. Thompson, R. Goldfarb & J. Richards), pp. 845–90. Littleton, CO: Society of Economic Geologists.
- SOBEL, E. R. & STRECKER, M. R. 2003. Uplift, exhumation and precipitation: tectonic and climatic control of Late Cenozoic landscape evolution in the northern Sierras Pampeanas, Argentina. *Basin Research* **15**, 431–51.
- SOMOZA, R., SINGER, S. & COIRA, B. 1996. Paleomagnetism of upper Miocene ignimbrites in the Puna: an analysis of vertical-axis rotations in the Central Andes. *Journal of Geophysical Research* **101**, 11387–400.
- SRUOGA, P., JAPAS, M. S., SALANI, F. M. & KLEIMAN, L. E. 2014. La Peligrosa caldera (47° 15'S, 71° 40'W): a key event during the Jurassic ignimbrite flare-up in Southern Patagonia, Argentina. *Journal of Volcanology and Geothermal Research* **269**, 44–56.
- SRUOGA, P. & URBINA, N. E. 2008. Volcanismo en ambiente de flat-slab: Cañada Honda, Sierras Pampeanas de San Luis (32° 50' S, 66° 00' O). *17° Congreso Geológico Argentino* **1**, 238–9.
- SRUOGA, P., URBINA, N. E. & MALVICINI, L. 1996. El Volcanismo Terciario y los depósitos hidrotermales (Au, Cu) asociados en La Carolina y Diente Verde, San Luis, Argentina. *13° Congreso Geológico Argentino* **3**, 89–100.
- SURIANO, J., MARDONEZ CATALÁN, J. D., MAHONEY, J. B., GIAMBIAGI, L. B. & MESCUA, J. F. 2015. Secuencia de levantamiento de la Precordillera a los 30° LS: nueva hipótesis a partir de la sedimentología y geocronología de depósitos sinorogénicos. *16° Reunión de Tectónica*, 104–5. Río Negro.
- TABBUTT, K. D. 1990. Temporal constraints on the tectonic evolution of the Sierra de Famatina, northwestern Argentina, using the fission-track method to date tufts interbedded in synorogenic clastic sedimentary strata. *Journal of Geology* **98**, 557–66.
- TAYLOR, B. E., MCKEE, E. H. & SILLITOE, R. H. 1997. δ D and δ^{18} O maps of South American meteoric waters: implications for Andean uplift and hydrothermal ore deposits. *South American Symposium on Isotope Geology, Extended Abstracts*, 151–2. São Paulo.
- TERRIZZANO, C. M., FAZZITO, S. Y., CORTÉS, J. M. & RAPALINI, A. E. 2010. Studies of Quaternary deformation zones through geomorphic and geophysical evidence. A Case in the Precordillera Sur, Central Andes of Argentina. *Tectonophysics* **490**, 184–96.
- TOMMASI, A., VAUCHEZ, A., FERNÁNDEZ, L. A. D. & PORCHER, C. C. 1994. Magma-assisted strain localization in an orogen-parallel transcurrent shear zone of southern Brazil. *Tectonics* **13**, 421–37.
- TOSELLI, A. J. 1996. Volcanismo andino. In *Geología del Sistema de Famatina* (eds F. G. Aceñolaza, H. Miller & A. J. Toselli), pp. 295–6. Münchner Geologische Hefte A19.
- TOSELLI, A. J., SAAVEDRA, J. & ROSSI DE TOSELLI, J. N. 1996. Interpretación geotectónica del magmatismo del Sistema de Famatina. In *Geología del Sistema de Famatina* (eds F. G. Aceñolaza, H. Miller & A. J. Toselli), pp. 283–92. Münchner Geologische Hefte A19.
- TRIEP, E. & CARDINALI, C. 1984. Mecanismos de sismos en las Sierras Pampeanas occidentales. *9° Congreso Geológico Argentino* **3**, 61–80. Bariloche.
- TRIPALDI, A., NET, L., LIMARINO, C., MARENCI, S., RÉ, G. & CASELLI, A. 2001. Paleoambientes sedimentarios y procedencia de la Formación Vinchina, Mioceno, noroeste de la provincia de La Rioja. *Revista de la Asociación Geológica Argentina*, **56**, 443–65.
- TURNER, J. C. M. 1964. *Descripción geológica de la Hoja 15c. Vinchina (provincia de La Rioja)*. Buenos Aires: Dirección Nacional de Geología y Minería, Boletín 100.
- URBINA, N. E. & SRUOGA, P. 2009. La faja metalogenética de San Luis: mineralización y geocronología en el contexto metalogenético regional. *Revista de la Asociación Geológica Argentina* **64**, 635–45.
- URBINA, N. E., SRUOGA, P. & MALVICINI, L. 1995. El volcanismo Mioceno y la mineralización aurífera asociada en La Carolina y Diente Verde, provincia de San Luis, Argentina. *9° Congreso Latinoamericano de Geología*, 1–13. Caracas.
- URBINA, N. E., SRUOGA, P. & MALVICINI, L. 1997. Late tertiary gold-bearing volcanic belt in the Sierras Pampeanas of San Luis, Argentina. *International Geology Review* **39**, 287–306.
- URREIZTIETA, M. 1996. *Tectonique Néogène et bassins transpressifs en bordure méridionale de l'Altiplano-Puna (27°S), Nord-Ouest argentin*. Ph.D. thesis, Géosciences Rennes, Memoir 72. Rennes, France. Published thesis.
- WEMMER, K., STEENKEN, A., MÜLLER, S., LÓPEZ DE LUCHI, M. & SIEGSMUND, S. 2011. The tectonic significance of K/Ar illite fine-fraction ages from the San Luis Formation (Eastern Sierras Pampeanas, Argentina). *International Journal of Science* **100**, 659–69.
- WHEELER, R. L. 1980. Cross-strike structural discontinuities: possible exploration tool for natural gas in Appalachian overthrust belt. *American Association of Petroleum Geologists Bulletin* **64**, 2166–78.
- YAGUPSKY, D. L., WINOCUR, D. A. & CRISTALLINI, E. O. 2014. Evidencias geodésicas de actividad en lineamientos transversales a Precordillera y Pie de Palo: implicancias tectónicas. *19° Congreso Geológico Argentino, Simposio Subducción horizontal en el segmento andino 27°–33°S: un enfoque multidisciplinario*, **S20**, 2 pp. Córdoba.
- YÁÑEZ, G. A., RANERO, C. R., VON HUENE, R. & DÍAZ, J. 2001. Magnetic anomaly interpretation across the southern central Andes (32°–34°S): the role of the Juan Fernández Ridge in the late Tertiary evolution of the margin. *Journal of Geophysical Research* **106**, 6325–45.
- ZAMBRANO, O., RAPALINI, A. E., DÁVILA, F. M., ASTINI, R. A. & SPAGNUOLO, C. M. 2011. Magnetostratigraphy and paleomagnetism of early and middle Miocene synorogenic strata: basement partitioning and minor block rotation in Argentine broken foreland. *International Journal of Earth Science* **100**, 591–602.
- ZAPATA, T. R. & ALLMENDINGER, R. W. 1996. Thrust front zone of the Precordillera, Argentina: a thick skinned triangle zone. *American Association of Petroleum Geology Bulletin* **80**, 359–81.