

Consumption of *Lactobacillus casei* Fermented Milk Prevents *Salmonella* Reactive Arthritis by Modulating IL-23/IL-17 Expression

Mariángeles Noto Llana*, Sebastián Hernán Sarnacki, María del Rosario Aya Castañeda, María Isabel Bernal, Mónica Nancy Giacomodonato, María Cristina Cerquetti*

Instituto de Microbiología y Parasitología Médica (IMPam-CONICET) and Departamento de Microbiología, Parasitología e Inmunología, Facultad de Medicina, Universidad de Buenos Aires, Buenos Aires, Argentina

Abstract

Reactive arthritis is the development of sterile joint inflammation as a sequel to a remote infection, often in the gut. We have previously shown that a low dose of *S. enteritidis* inoculated to streptomycin-pretreated mice generates a self-limiting enterocolitis suitable for studying reactive arthritis. Here we show that consumption of *Lactobacillus casei* prior to infection abolishes intestinal and joint inflammation triggered by *Salmonella*. BALB/c mice were sacrificed after infection; intestinal and joint samples were analyzed for histological changes and expression of cytokines. TNF- α was measured by ELISA and the expression of IL-1 β , IL-6, IL-10, IL-17, IL-23 and TGF- β was assessed by qPCR. *L. casei* consumption prevented *Salmonella*-induced synovitis, the increment of TNF- α in knees and the increase of IL-17 expression in popliteal and inguinal lymph nodes. At intestinal level consumption of *L. casei* drastically diminished *S. enteritidis* invasiveness and shortened splenic persistence of the pathogen. Bacterial loads recovered at days 2 and 5 from Peyer's patches were 10-fold lower in mice fed with *L. casei*. In accordance, we found that the augment in gut permeability induced during enterocolitis was decreased in those animals. Consumption of *L. casei* prior to infection failed to increase anti-inflammatory molecules such as IL-10 and TGF- β in the intestine. On the other hand, consumption of *L. casei* abrogated the expression of TNF- α , IL-17, IL-23, IL-1 β and IL-6 in cecum and mesenteric lymph nodes. These cytokines are needed for differentiation of immune cells involved in the development of reactive arthritis such as Th17 and $\gamma\delta$ T cells. Trafficking of these inflammatory cells from the gut to the joints has been proposed as a mechanism of generation of reactive arthritis. Our results suggest that *L. casei* consumption prevents *Salmonella*-induced synovitis by altering the intestinal milieu necessary for differentiation of cells involved in the generation of joint inflammation.

Citation: Noto Llana M, Sarnacki SH, Aya Castañeda MdR, Bernal MI, Giacomodonato MN, et al. (2013) Consumption of *Lactobacillus casei* Fermented Milk Prevents *Salmonella* Reactive Arthritis by Modulating IL-23/IL-17 Expression. PLoS ONE 8(12): e82588. doi:10.1371/journal.pone.0082588

Editor: Josep Bassaganya-Riera, Virginia Tech, United States of America

Received: August 7, 2013; **Accepted:** October 25, 2013; **Published:** December 10, 2013

Copyright: © 2013 Noto Llana et al. This is an open-access article distributed under the terms of the Creative Commons Attribution License, which permits unrestricted use, distribution, and reproduction in any medium, provided the original author and source are credited.

Funding: This work was supported in part by grants from Consejo Nacional de Investigaciones Científicas y Técnicas, Argentina (PIP 2012-2014 GI), and Secretaría de Ciencia y Técnica de la Universidad de Buenos Aires, Argentina (UBACyT M009 and 20020100100541). The funders had no role in study design, data collection and analysis, decision to publish, or preparation of the manuscript.

Competing interests: The authors have declared that no competing interests exist.

* E-mail: mnotollana@yahoo.com (MNL); ccerquetti@fmed.uba.ar (MCC)

Introduction

A close association exists between the generation of gut inflammation and joint disease. An early clue to this link was the observation that certain bacterial enteropathogens can induce reactive arthritis (ReA). In this sense, ReA is defined as the sterile inflammation of joint tissues following a distant mucosal infection, often gastrointestinal [1]. In developing countries one-third of all ReA cases are triggered by *Salmonella* enterocolitis [2].

Salmonella enterica serotype Typhimurium (*S. Typhimurium*) and *S. Enteritidis*, the two most abundant serotypes for salmonellosis, elicit an acute inflammatory response in the

intestinal mucosa of humans that can be modeled using streptomycin-pretreated mice [3]. This inflammatory reaction is initiated by direct contact of *Salmonella* with host cells, such as epithelial cells, macrophages or dendritic cells, followed by an amplification of inflammatory responses in tissue [4]. As a result, changes in gene expression are observed in the intestinal mucosa during *Salmonella* infection, including markedly increased mRNA levels of interleukin-17 and IL-23 genes [5]. T cells play an important role in amplifying inflammatory responses in the cecal mucosa; trafficking of these gut inflammatory cells towards the joints has been proposed as a mechanism of generation of ReA [6].

Table 1. Experimental groups used throughout this study.

Group of mice	Probiotic	Streptomycin	S. Enteritidis
EC	-	+	+
<i>L. casei</i> + EC	+	+	+
Control	-	-	-
<i>L. casei</i> + Strep	+	+	-
Strep	-	+	-

doi: 10.1371/journal.pone.0082588.t001

Probiotics are defined by FAO and WHO as live microorganisms which when administered in adequate amounts, confer a health benefit to the host [7]. Orally administered probiotics exhibit widespread effects on gut homeostasis and immunomodulation of both mucosal and systemic immunity. It is well documented that probiotics may counterweight aggressive enteric pathogens in the gut, reinforce the barrier function of the epithelium and contribute in the regulation of innate and adaptive immune responses of the host under healthy or pathogenic conditions [8]. *Lactobacillus casei* DN-114 001 is a probiotic strain that survives intestinal transit [9] and exerts beneficial effects in vivo. This probiotic strain is able to modify the digestive microflora and enhance the immune system during its transit in the digestive tract [10,11]. It was also shown that *Lactobacillus casei* DN-114 001 is able to reduce the incidence and duration of diarrhea in children [12,13]. Moreover, this probiotic interacts with human intestinal mucosa and can markedly reduce the mucosal release of inflammatory cytokines in active Crohn's disease [14,15]. Nevertheless, the use of probiotics to prevent ReA has not been investigated, probably because of the lack of an adequate experimental model. In this regard, investigation on the pathogenesis of ReA is difficult because of the limited studies that can be performed in humans; therefore, the availability of animal models is crucial. We have recently showed that a low dose of *S. Enteritidis* inoculated to streptomycin-pretreated mice generates a self-limiting enterocolitis model useful for studying ReA [16]. In the present work, using this animal model of intestinal infection we were able to determine the protective role of *Lactobacillus casei* DN-114 001 fermented milk (LCFM) on the development of ReA associated to *Salmonella* enterocolitis.

Materials and Methods

Mice

Six to 8 – week old female BALB/c mice were obtained from our vivarium, maintained under standard conditions and provided with food and water *ad libitum*. At the end of each experiment, mice were killed with carbon dioxide. All experimental protocols were approved by the Animal Ethics Committee, University of Buenos Aires.

Bacteria

Wild-type strain of *Salmonella enterica* serovar Enteritidis #5694 (*S. Enteritidis*) was used to infect mice. Bacteria were

cultured in trypticase soy broth at 37 °C, 200 cycles per minute, then pelleted by centrifugation and suspended to the appropriate density in saline solution. In all cases the number of bacteria was determined by plating appropriate dilutions on trypticase soy agar plates.

Salmonella infection and generation of enterocolitis

Mice were pretreated with 20 mg of streptomycin (Sigma Aldrich) given intragastrically [17] and 24 h later they received $3-4 \times 10^3$ CFU of *S. Enteritidis* by the same route. For intragastric infection, 0.2 ml of the bacterial suspension was introduced into the stomach with a 21 G blunt needle on a 1.0 ml plastic syringe.

Probiotic administration

Commercially-available fermented milk containing *Lactobacillus casei* DN-114001 (LCFM, Danone S.A.) was used in this study. LCFM was given to mice *ad libitum*, as described elsewhere [18] during 7 consecutive days prior to *S. Enteritidis* infection. Mice ingested an average dose of 1×10^8 CFU of LCFM per day.

Experimental groups

Throughout this study five different experimental groups were used, as shown in Table 1. Results obtained from Strep group were similar to those presented by the Control and *L. casei* + Strep group; therefore, they were not described in Result section unless otherwise stated. Samples were taken at days 2, 5 and 14 post *Salmonella* infection.

Bacterial colonization and persistence

At the indicated times post infection mice were sacrificed and bacterial loads were analyzed. All Peyer's patches located along the large intestine (6 to 8) and one third of the spleen were removed aseptically from each animal and homogenized in sterile saline solution. Samples were diluted appropriately in saline and plated on *Salmonella*-*Shigella* (SS) agar. Samples were also cultured for 18 h in selenite broth for enrichment. *Salmonella*-like colonies appearing on SS plates were grown on triple-sugar-iron agar slants and tested for somatic antigen O9.

Persistence and colonization of bacteria in knee and popliteal and inguinal lymph nodes were also studied by PCR. Tissues were homogenized in 1% PBW (Peptone Buffered Water). After 24 h of enrichment at 37° C, DNA extraction was performed using the phenol-chloroform technique [19]. A

Table 2. Oligonucleotides primers used for quantitative real-time reverse transcriptase-PCR assays.

mRNA Targeted	Sequence (5'→3') ^a	Accession number	PCR product size (nt)	Ref.
TNF-α	ATGAGCACAGAAAGCATGATC (F) TACAGGCTTGTCACCTCGAATT (R)	U68415	276	[21]
IL-17	GCTCCAGAAGGCCCTCAGA (F) AGCTTTCCCTCCGCATTGA (R)	U43088	142	[5]
IL-1β	TTGACAGTGATGAGAATGACC (F) CAAAGATGAAGGAAAAGAAGG (R)	NM_008361	252	[21]
IL-6	TGATGCACTTGCAAGAAACAA (F) GGTCTTGGTCCTTAGCCACTC (R)	NM_031168	328	[21]
IL-23	TGTGCCTAGGAGTAGCAGTCCTGA (F) TTGGCGGATCCTTTGCAAGCAGAA (R)	NM_031252	226	[5]
IL-10	CCAAGCCTTATCGGAAATGA (F) TTTTACAGGGGAGAAATCG (R)	NM_010548	162	[21]
TGF-β	ACCACTACTGCTTCAGCTC (F) TGTTGGTTGTAGAGGCAAG (R)	NM_011577	194	[22]
18s rRNA	AACACGGGAAACCTCACCC(F) CCACCAACTAAGAACGGCCA (R)	GU372691	103	[21]

Primers were purchased from Invitrogen Inc. and were designed according to the DNA sequence information available for *Mus musculus* (*M. musculus* blast server BLAST Server Database at www.sanger.ac.uk).

^a F, forward primer; R, reverse primer.

doi: 10.1371/journal.pone.0082588.t002

standard PCR of 45 cycles was carried out using selective primers to amplify *invA* and *sopA* genes, of 285 pb and 113 pb products respectively. Primers used were: forward 5'-CTGAAATTATCGCCACGTTCCGGCAA – and reverse 5'-CATCGCACCGTCAAAGGAACC -3' to amplify *invA* gene [19] and forward 5'-TCCACCGTGAAGTTGATTG -3' and reverse 3'-GCACTGAGGATGTGCTGGTA -5' [20] for *sopA* gene. The cycling programme was 95° C for 10 s, 55 ° C for 10 s and 72° C for 15 s and one cycle of 40° C for 30 s. Twenty µl aliquots of the reaction mixtures were electrophoresed through 2.0% agarose gel and fragments were revealed by staining with ethidium bromide.

Histological analysis

Intestinal samples were fixed in formalin and processed by standard procedures for paraffin embedding. Knee joints were dissected, fixed in formalin for 2 days, decalcified in EDTA for 30 to 40 days, and then embedded in paraffin. Standard sections of 5 µm were prepared and stained with haematoxylin-eosin (HE) using routine histology techniques. An experienced pathologist blinded to the experimental protocol evaluated findings of intestine and joint abnormalities. Synovial alterations were scored as 0 = no changes; 1 = slight thickening of synovial cell layer (up to 3 layers of synoviocytes) accompanied by congestion and oedema of the external membrane; 2 = moderate thickening of synovial cell layer (3 to 5 layers of synoviocytes) accompanied by congestion and oedema of the external membrane; 3 = severe thickening of synovial lining (more than 5 layers) accompanied by congestion and oedema of the external membrane. Intestinal alterations were scored as 0 = no changes; 1 = oedema and/or villous capillary dilatation with epithelial preservation; 2 = focal

mucosa irritation characterized by villous hydrops and capillary dilatation with mild to moderate mononuclear cell infiltration; 3 = similar to 2 but of extended distribution; 4 = mucosal alteration with mononuclear cell infiltration and loss of epithelial integrity.

Quantitative real-time reverse transcriptase-polymerase chain reaction

Total RNA was extracted from tissues using Trizol reagent (Life Technologies, Inc, Carlsbad, CA) at different time points according to the experiment. Total RNA (1 µg per sample) was reverse transcribed with oligo(dT) as primer using Expand Reverse Transcriptase (Promega Corporation, Madison, WI) according to the manufacturer's protocol. Quantitative real-time reverse transcriptase-polymerase chain reaction was performed using SyBr Green PCR kit (Applied Biosystems Inc, Foster City, CA) in an Applied Biosystems 7500 sequence detector. Primer sequences are described in Table 2. All samples were analyzed in the same run for 18s expression for normalization. Polymerase chain reaction parameters were 50° C for 2 min, 94° C for 2 min, and 40 cycles of 94° C for 30 s and 60° C. Quantification of gene expression was calculated using the comparative threshold cycle (Ct) method, normalized to the 18s control and efficiency of the RT reaction (relative quantity, $2^{-\Delta\Delta Ct}$). The replicates were then averaged, and fold induction was determined, considering the value in "Control" group as 1 [21].

Cytokine Analysis

For TNF-α determination, knee samples were obtained 5 days after oral inoculation with 3-4 x10³ CFU of *S. Enteritidis* from mice of EC and *L. casei* + EC groups. Tissue

homogenates from 5 animals were pooled and subjected to centrifugation (12,000 rpm, 1 min) to pellet all cell debris prior to concentration using an Amicon Ultra-4 Centrifugal Filter Unit (Merck Millipore). Supernatants were stored at -20°C until further use. Analyses were conducted using commercially available enzyme-linked immunosorbent assay (ELISA) kits (R&D Systems, Minneapolis, MN) according to manufacturer's instructions. Cytokine levels were expressed as picogram per ml (pg/ml).

Intestinal permeability in vivo

The intestinal permeability was measured by determining the amount of FITC- dextran in blood after it was orally administered as described previously [23]. Briefly, each mouse received 440 mg/kg of body weight of FITC- dextran (molecular weight 4.4 kDa; Sigma-Aldrich) by gavage. A blood sample, obtained 5 h later, was first centrifuged (3,000 rpm at 4° C) for 30 min, serum was collected and added to a 96- well microplate. The concentration of FITC- dextran was determined by spectrophotofluorometry with an excitation wavelength of 483 nm and an emission wavelength of 525 nm using serially diluted samples of the marker as standard.

Statistical analysis

Statistically significant differences between experimental groups were determined by one-way analysis of variance (ANOVA) followed by Tukey test for multiple comparisons. Statistical analysis was performed using the software program Prism 4.0 (GraphPad Software, San Diego, CA, USA). P-values less than 0.05 were considered statistically significant.

Results

Consumption of LCFM prevents joint inflammation associated with *Salmonella* enterocolitis

Experiments were conducted using a model in which streptomycin-pretreated mice are infected with a low dose of *S. Enteritidis* in order to induce enterocolitis [16]. Mice received 20 mg of streptomycin 24 h before intragastric infection with 3 to 4 x 10³ CFU of the pathogen (EC group). The experimental group was fed with LCFM for one week prior to the induction of *Salmonella* enterocolitis (*L. casei* + EC group). Mice treated with streptomycin only (Strep group), fed with *L. casei* and streptomycin (*L. casei* + Strep) and animals without any treatment (Control group) were included as controls. As shown earlier [16], 5 days after the induction of *Salmonella* enterocolitis, animals of the EC group presented synovitis with moderate hyperplasia of the synovial membrane and mononuclear infiltration (Figure 1A); lesions observed corresponded to a pathological score of 2 (Figure 1D). Interestingly, mice fed with the LCFM one week prior to the onset of enterocolitis (*L. casei* + EC) did not present any joint alteration (Figure 1B); their synovial membranes were healthy and similar to those from the Control group (Figure 1C) with a pathological score of 0 (Figure 1D). Results obtained from *L. casei* + Strep group were similar to those presented by the Control group (data not shown).

Because local production of TNF- α appears to be responsible for synovial inflammation induced during *S. Enteritidis* intestinal infection [16], we analyzed whether consumption of the probiotic modifies the production of this inflammatory molecule. The amount of TNF- α was determined by ELISA in joint homogenates 5 days after the onset of *S. Enteritidis* enterocolitis. As shown in Figure 2A, the increase of articular TNF- α observed in animals suffering enterocolitis (EC group) was abrogated by the consumption of LCFM prior to *S. Enteritidis* infection (*L. casei* + EC group). The amount of TNF- α in *L. casei* + Strep group was similar to that from untreated animals. These results would indicate that the prevention of synovitis observed in *L. casei* + EC group is closely related to the absence of local TNF- α .

It has been shown that TNF- α production and synovitis are related to the expression of IL-17 in joint draining lymph nodes [16,24]. With this in mind we analyzed the expression of IL-17 mRNA in popliteal and inguinal lymph nodes during *Salmonella* enterocolitis in animals with or without probiotic treatment. Figure 2B shows that the increase in IL-17 expression induced by *Salmonella* enterocolitis in lymph nodes draining the inflamed joints (EC group) was significantly lower ($p < 0.01$) in animals fed with LCFM (*L. casei* + EC group). Expression of IL-17 mRNA was similar in *L. casei* + EC, Control and *L. casei* + Strep groups.

Consumption of LCFM prevents *Salmonella*- induced enterocolitis

To this point our results show that ingestion of LCFM can prevent synovitis triggered by *S. Enteritidis* enterocolitis. The prominent link between intestinal and joint inflammation has been known for many years [25]. Therefore, it is likely that the beneficial effect of the probiotic on inflamed joints is related to the preservation of intestinal health during *Salmonella* enterocolitis. We next analyzed the effect of LCFM consumption on the intestinal inflammatory response to *S. Enteritidis*. Mice treated with streptomycin only (Strep group), fed with *L. casei* and streptomycin (*L. casei* + Strep) and animals without any treatment (Control group) were included as controls. Forty-eight hours after infection animals of the EC group presented signs of disease including diarrhea, rough hair coat, and lethargy. We found that *S. Enteritidis* induces diffuse enterocolitis, characterized by an epithelium diminished in height, mononuclear infiltration of the mucosa and submucosa, and loss of normal villus architecture (Figure 3A). Administration of LCFM for one week prior to infection prevented histological changes (*L. casei* + EC group; Figure 3B) as well as the clinical symptoms. The average histological score observed during *Salmonella* enterocolitis diminished from 3 in EC group to 0 in mice fed with the probiotic (*L. casei* + EC group); the latter was similar to Control group (Figure 3C and D). In addition, results obtained from *L. casei* + Strep group were similar to those presented by the Control group (data not shown).

The protective effect of LCFM observed on intestinal epithelium and clinical features could be related to the significant decrease in the bacterial invasion observed in the *L. casei* + EC group. It has been demonstrated that serovar

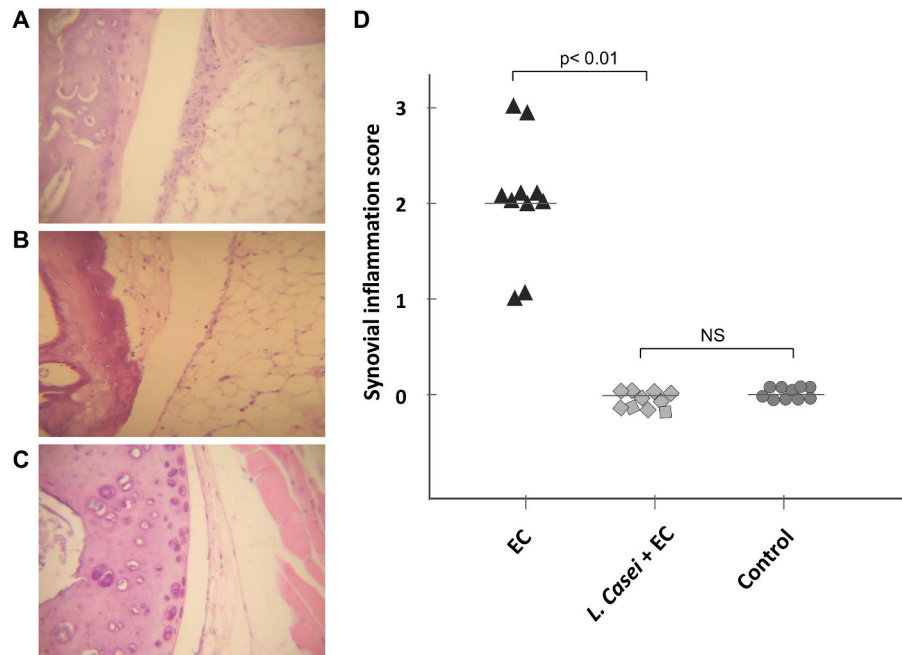


Figure 1. Effect of LCFM consumption on joint pathology during *Salmonella* enterocolitis. A to C: Histology of knee joints 5 days after oral inoculation with the pathogen. D: Synovial inflammation scores. EC group: mice received 20 mg of streptomycin 24 h before intragastric infection with $3-4 \times 10^3$ CFU of *S. Enteritidis*. *L. casei* + EC group: mice received the probiotic for a week before enterocolitis onset. Control group: untreated mice. (A) EC group: moderate hyperplasia, with 3 to 5 layers of synoviocytes (arrows). (B) *L. casei* + EC group: normal synovial capsule (arrows), undistinguishable from Control group. (C) Control animals: normal synovial capsule (arrows). HE; 40x. Data were collected from 3 independent experiments.

doi: 10.1371/journal.pone.0082588.g001

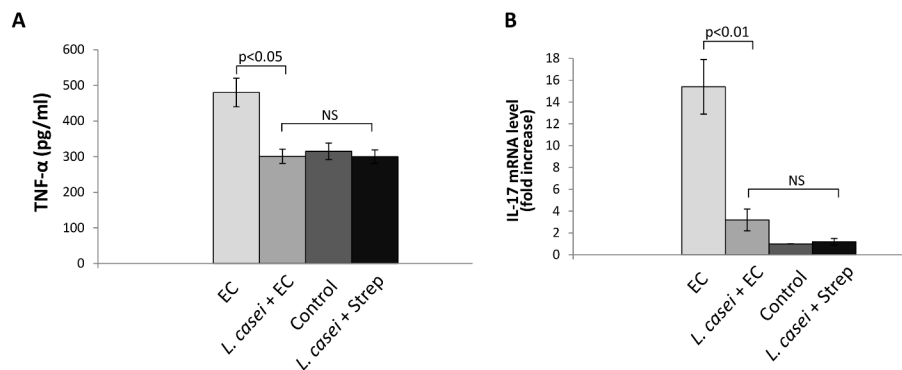


Figure 2. Effect of LCFM consumption on joint during *Salmonella* enterocolitis. A. TNF- α was measured in joint homogenates by ELISA 5 days after oral infection with the pathogen. Five animals per group were analyzed. B. IL-17 expression was analyzed by qPCR at day 5 post infection in joint draining lymph nodes. Seven animals per group were analyzed. EC group: mice received 20 mg of streptomycin 24 h before intragastric infection with $3-4 \times 10^3$ CFU of *S. Enteritidis*. *L. casei* + EC group: mice received the probiotic for a week before enterocolitis onset. Control group: untreated mice. *L. casei* + Strep group: animals were fed with the probiotic for a week and then received streptomycin. Results are expressed as mean \pm SD. (NS): no significant differences. Data were collected from 3 independent experiments.

doi: 10.1371/journal.pone.0082588.g002

Enteritidis has high blood invasiveness generating extra-intestinal focus of infection with elevated rates of mortality [26]. Our results clearly indicate that consumption of LCFM

drastically diminishes *S. Enteritidis* invasiveness and shortens splenic persistence of the pathogen. Colonization and persistence of *S. Enteritidis* were analyzed at days 2, 5, and 14

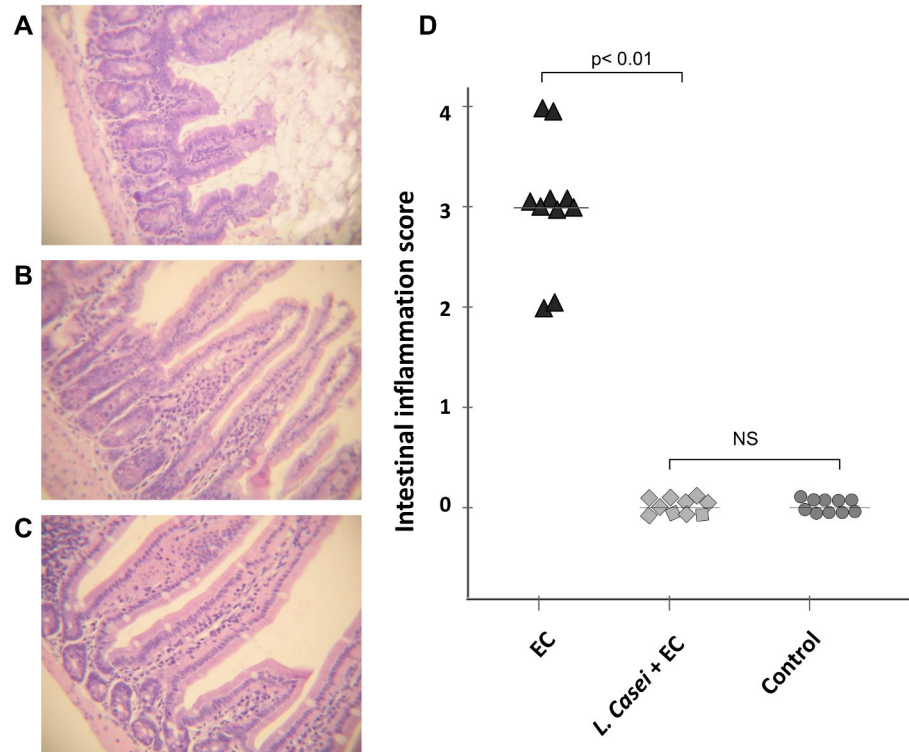


Figure 3. Effect of LCFM consumption on intestinal pathology during *Salmonella* enterocolitis. A to C: Histology of the intestine 2 days after oral infection with the pathogen. D: Intestinal inflammation scores. EC group: mice received 20 mg of streptomycin 24 h before intragastric infection with 3.4×10^3 CFU of *S. Enteritidis*. *L. casei* + EC group: mice received the probiotic for a week before enterocolitis onset. Control group: untreated mice. (A) EC group: moderate enterocolitis, loss of normal villus architecture and height. (B) *L. casei* + EC group: regular display of intestinal villus, undistinguishable from Control group (C). HE; 40x. (NS): no significant differences. Data were collected from 3 independent experiments.

doi: 10.1371/journal.pone.0082588.g003

postinfection (Table 3). Bacterial loads recovered at days 2 and 5 from Peyer's patches were 10-fold lower in *L. casei* + EC group than in EC group. The effect of consumption of LCFM on spleen was even more dramatic. The intake of probiotics prior to *Salmonella* infection not only significantly decreased bacterial load, but also shortened infection period. *Salmonella* was still colonizing spleen at day 14 in EC group, whereas by that time this organ was sterile in animals from *L. casei* + EC group (Table 3). It is worth mentioning that in *L. casei* + EC group bacterial cultures were positive only after enrichment.

Preserved intestinal epithelium and diminished bacterial invasiveness induced by LCFM correlated with 100% survival rate of animals from *L. casei* + EC group. Approximately 20% of mice with *Salmonella* enterocolitis die by day 7 post infection [16]; as shown in Table 3 no deaths occurred among mice fed with LCFM prior to infection. Neither live *Salmonella* nor their DNA were detected in joints or draining lymph nodes at any time tested for any group analyzed (data not shown).

It has been shown that intestinal permeability increases during enterocolitis [27]. We next decided to investigate the effect of LCFM on gut permeability during *Salmonella* enterocolitis. For that purpose, we administered a single dose of FITC-dextran by gavage to the animals at day 2 post

infection and measured the intensity of fluorescence in serum 5 h later. As shown in Figure 4, the augment in gut permeability to macromolecules induced by *Salmonella* enterocolitis (EC group) was decreased by the consumption of LCFM to the same extent as found in healthy mice (*L. casei* + EC, *L. casei* + Strep and Control groups). It is likely then, that the enhancement of gut barrier function induced by LCFM consumption will prevent the intestinal response to the pathogen and consequently the associated joint sequelae.

Consumption of LCFM prevents the expression of local inflammatory molecules induced by *Salmonella* enterocolitis

Next we intended to analyze through which mechanism LCFM intake abrogates the inflammatory reaction of the gut against *S. Enteritidis*. Therapeutic efficacy of *L. casei* consumption is usually associated with the induction of anti-inflammatory molecules such as IL-10, TGF- β [28,29]. To test whether IL-10 and TGF- β are induced after LCFM consumption, we investigated the intestinal expression of these cytokines in mice treated with *L. casei* only. As shown in Figure 5 no increase in either cytokine expression was found in any

Table 3. Effect of LCMF on colonization, persistence and survival during *Salmonella* enterocolitis.

Treatment	Dose CFU/mice	Days p.i.	Peyer's Patches (CFU/ml) ^(a)	Spleen (CFU/ml) ^(a)	Survival rate ^(b)
EC	3-4 x 10 ³	2	52 (19-78)	65 (23-89)	5/5
		5	66 (24-113)	88 (32-111)	4/5
		14	Negative	55 (17-63)	4/5
<i>L. casei</i> + EC	3-4 x 10 ³	2	<5*	<5	5/5
		5	<5	<5	5/5
		14	Negative	Negative	5/5

Mice received 20 mg of streptomycin 24 h before intragastric infection with 3-4 x 10³ CFU of *Salmonella enterica* (EC group). *L. casei* + EC group received probiotic for a week before EC onset. At day 2, 5 and 14 after infection mice were sacrificed.

(a) Median (range). * *S. Enteritidis* was isolated only after enrichment in selenite broth. Survival rate: Number of survivors/total number of mice.

(b) Number of survivors/total number of mice.

doi: 10.1371/journal.pone.0082588.t003

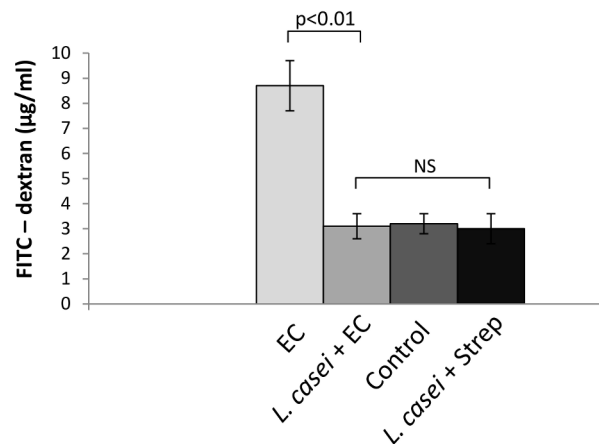


Figure 4. Effect of LCFM on intestinal permeability after *Salmonella* enterocolitis. A single dose of FITC-dextran was administered by gavage to the animals at day 2 post infection and the intensity of fluorescence was measured in serum 5 h later. EC group: mice received 20 mg of streptomycin 24 h before intragastric infection with 3-4 x 10³ CFU of *S. Enteritidis*. *L. casei* + EC group: mice received the probiotic for a week before enterocolitis onset. Control group: uninfected mice. *L. casei* + Strep group: animals were fed with the probiotic for a week and then received streptomycin. Results are expressed as mean +/- SD. Seven animals per group were analyzed. (NS): no significant differences. Representative data from 3 independent experiments.

doi: 10.1371/journal.pone.0082588.g004

experimental group studied. These results suggest that the mechanism through which LCFM prevents intestinal response to *S. Enteritidis* is not the elevation of the anti inflammatory cytokines.

We then wondered whether probiotic treatment affects the expression of inflammatory cytokines triggered by *Salmonella* enterocolitis. Soon after intestinal infection *S. enterica* induces a significant increase in the expression of IL-17 and related cytokines such as TNF- α , IL-1 β , IL-6 and IL-23 [5,16]. Interestingly, a substantial amount of data also links arthritis development to the expression of IL-17 and related cytokines [30]. As shown in Figure 6, during enterocolitis intestinal TNF- α is 7 times higher than in animals without *S. Enteritidis* infection (Control and *L. casei* + Strep groups); similarly, IL-17 and IL-23

are significantly elevated (11 and 5 times higher compared to controls, respectively). Interestingly, animals fed with the probiotic (*L. casei* + EC) did not respond to the pathogen burden, since the expression of IL-17 and related cytokines was similar to that seen in uninfected mice (Figure 6). No changes in the expression of intestinal IL-1 β and IL-6 were observed at day 2 post infection (Figure 6).

The anti inflammatory effect of LCFM was even more dramatic in mesenteric lymph nodes. As shown in Figure 7, animals suffering from *Salmonella* enterocolitis (EC group) showed more than 30 fold increase in IL-17, 3-fold increase in IL-23, 50-fold increase in IL-1 β and 3-fold increase in IL-6, compared to Control and *L. casei* + Strep groups. Consumption of LCFM (*L. casei* + EC group) abrogated the expression of all

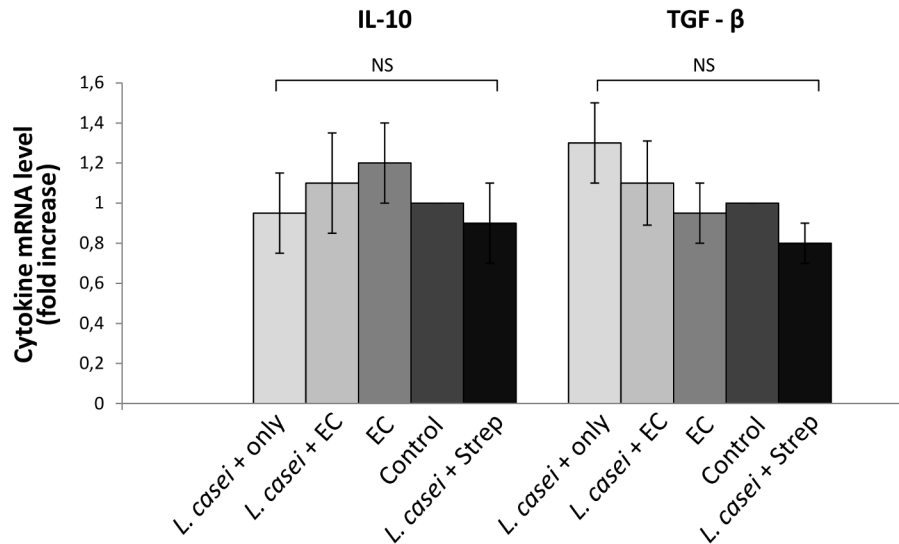


Figure 5. Effect of LCFM on intestinal IL-10 and TGF-β. Cytokines expression was analyzed by qPCR. *L. casei* only group: mice fed for a week with LCFM. EC group: mice received 20 mg of streptomycin 24 h before intragastric infection with $3-4 \times 10^3$ CFU of *S. Enteritidis*. *L. casei* + EC group: mice received the probiotic for a week before enterocolitis onset. Control group: untreated mice. *L. casei* + Strep group: animals were fed with the probiotic for a week and then received streptomycin. Results are expressed as mean \pm SD. Four animals per group were analyzed. (NS): no significant differences. Representative data from 3 independent experiments.

doi: 10.1371/journal.pone.0082588.g005

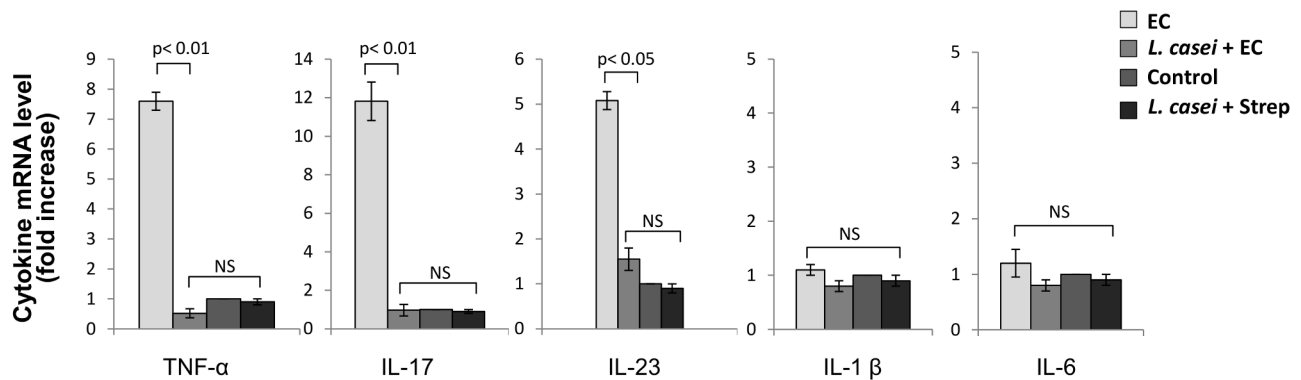


Figure 6. Effect of LCFM on intestinal cytokines after *Salmonella* enterocolitis. Cytokine expression was analyzed by qPCR 2 days after oral inoculation with $3-4 \times 10^3$ UFC of the pathogen. EC group: mice received 20 mg of streptomycin 24 h before intragastric infection with $3-4 \times 10^3$ CFU of *S. Enteritidis*. *L. casei* + EC group: mice received the probiotic for a week before enterocolitis onset. Control group: untreated mice. *L. casei* + Strep group: animals were fed with the probiotic for a week and then received streptomycin. Results are expressed as mean \pm SD. Seven animals per group were analyzed. (NS): no significant differences. Representative data from 3 independent experiments.

doi: 10.1371/journal.pone.0082588.g006

cytokines induced by *Salmonella* enterocolitis in mesenteric lymph nodes at day 5 post infection (Figure 7).

Discussion

ReA is the development of sterile inflammatory arthritis as a sequel to a remote infection, often in the gastrointestinal tract.

As stated before, in developing countries, more than thirty percent of ReA cases are associated with *Salmonella* enterocolitis [2]. Earlier we showed that oral infection with a low dose of *S. Enteritidis* induced to streptomycin-pretreated mice renders a suitable model for studying the pathogenesis of *Salmonella* ReA [16]. Here we demonstrate that consumption

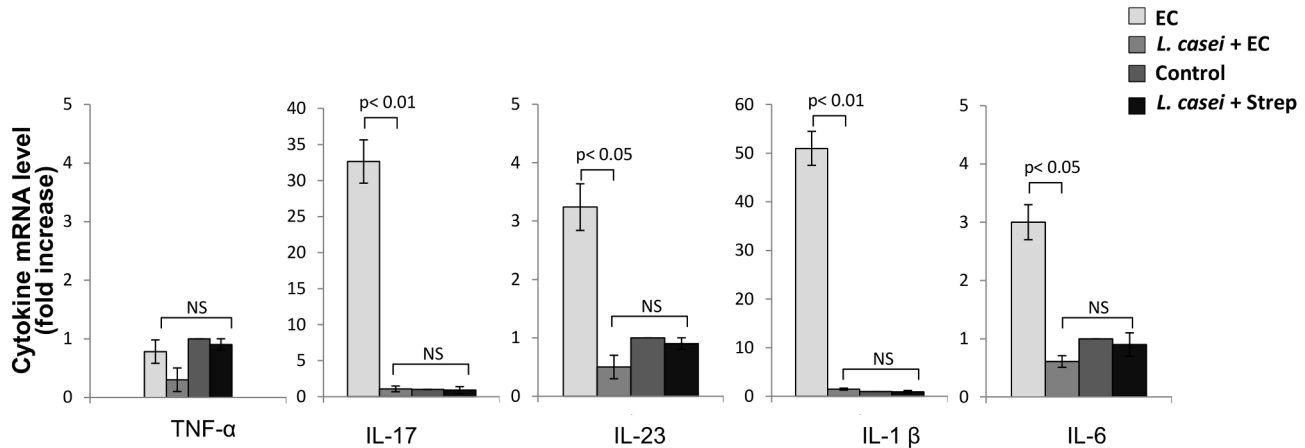


Figure 7. Effect of LCFM on mesenteric cytokines after *Salmonella* enterocolitis. Cytokine expression was analyzed by qPCR 5 days after oral inoculation with $3\text{--}4 \times 10^3$ UFC of the pathogen. EC group: mice received 20 mg of streptomycin 24 h before intragastric infection with $3\text{--}4 \times 10^3$ CFU of *S. Enteritidis*. *L. casei* + EC group: mice received the probiotic for a week before enterocolitis onset. Control group: untreated mice. *L. casei* + Strep group: animals were fed with the probiotic for a week and then received streptomycin. Results are expressed as mean \pm SD. Seven animals per group were analyzed. (NS): no significant differences. Representative data from 3 independent experiments.

doi: 10.1371/journal.pone.0082588.g007

of LCFM prior to infection abolishes intestinal and joint inflammation triggered by *Salmonella* enterocolitis.

Three main mechanisms of how probiotics can protect from intestinal inflammation have been described. First, probiotics may exclude or inhibit the growth of certain pathogens [31]; second, they may improve the gut barrier function [32]; and third, they can modulate mucosal and/or systemic immune response or metabolic functions [33]. The outcome of probiotic therapy also depends on the stage of the disease and the overall health status of the patient.

We found that, at intestinal level, LCFM significantly reduced colonization and invasion of *S. Enteritidis*. Similar results have been recently reported by Castillo et al [34]; they found that continuous administration of *L. casei* to *Salmonella*-infected mice reduces significantly the pathogen counts in spleen, liver and large intestine. Adhesion of probiotic bacteria to the gastrointestinal surface is considered critical for the competitive exclusion of pathogens and for modulation of local and systemic immunological activities [35,36]. Specific adhesin-receptor interactions are one of the major mechanisms for the adhesion of bacteria to gastrointestinal surfaces. Thus, competition for adhesion between probiotics and intestinal pathogens could explain the beneficial effect of LCFM consumption on animals suffering from *Salmonella* enterocolitis. In support to this hypothesis, it has been shown that probiotics like *L. casei* Shirota present surface adhesins which are closely related to those found in *Salmonella* Typhimurium and Enteritidis [37]. In addition, it is likely that products secreted by *L. casei* and present in the fermented milk could interfere with *Salmonella* adhesion to intestinal epithelium. Fucose for instance, which is secreted by *L. casei* upon fermentation of N-acetylglucosamine, could certainly block *Salmonella* Std fimbriae. These adhesins, required for

Salmonella enterica attachment and cecal colonization, recognize fucose residues on the epithelial cells [38–40].

We also found that *Salmonella* invasion is significantly diminished in LCFM-fed mice. This finding is in agreement with previous studies showing that probiotic consumption can strengthen the gut barrier function [41,42]. In mice suffering from dextran sulfate sodium-induced colitis *L. casei* leads to a significant protection against increased intestinal permeability [43]. Likewise, in our experiments, intake of LCFM prevented the increased permeability induced by *Salmonella* enterocolitis. Certain enteric pathogens regulate epithelial permeability by modifying expression and localization of tight junction proteins. *Salmonella* spp., for instance, disrupt tight junction proteins by means of effector proteins secreted through the type three secretion system (TTSS) [44,45]. Intimate attachment between bacteria and eukaryotic cells is an indispensable prerequisite condition to translocate effector proteins through TTSS-1 [46].

Therefore, prevention of *Salmonella* adhesion to the intestinal epithelium by LCFM could abrogate not only bacterial colonization but also translocation of effector proteins involved in disruption of intestinal barrier and bacterial invasion. Moreover, avoiding translocation of effector proteins such as SopB, SopE and SopE2, could also explain the attenuation of the intestinal inflammatory response to *Salmonella* observed in LCFM fed mice. Different probiotic bacteria, including *L. casei*, can exert their anti inflammatory effect increasing the production of IL-10 and TGF- β by T cells [28,29]. In our model, however, neither intestinal IL-10 nor TGF- β expression was induced by LCFM. Our results are in line with a recent study in mice showing that *Bifidobacterium breve* -but not *L. casei*- is able to induce IL-10-producing T cells in the colon [47]. Furthermore, Chung et al showed that colonic TGF- β expression does not augment in *L. casei* treated animals [48]. It

is likely then, that the anti inflammatory effect observed in the gut (and joints) of mice pre treated with the LCFM is related not to the induction of anti inflammatory cytokines but rather to the prevention of the expression of inflammatory molecules.

In previous studies we showed that intestinal IL-17 induced by *Salmonella* enterocolitis is directly related to the induction of joint inflammation and that neutralization of IL-17 in *Salmonella* infected animals resulted in the abrogation of synovitis [16]. Furthermore, intestinal infection with $\Delta invG$ mutant of *Salmonella*, bearing a defective TTSS-1, triggers neither intestinal inflammatory IL-17 nor joint inflammation [16,49]. In the present work we show that consumption of LCFM prevents IL-17 intestinal response to *Salmonella* and at the same time blocks the induction of joint inflammation.

Upon *Salmonella* infection, the IL-23/IL-17 axis is triggered in the intestinal mucosa. Macrophages and dendritic cells infected with *Salmonella* are a potential source of IL-23, a cytokine that helps to amplify the inflammatory response in intestinal tissue. Thus, IL-23 produced by phagocytes stimulates, in turn, T cells to secrete IL-17 [5]. Different T cells -like Th17, $\gamma\delta$ and NKT- present in the intestinal mucosa and lamina propria express the receptor for IL-23 and constitute an important source of IL-17 during *Salmonella* infection [5,50]. Th17, $\gamma\delta$ and NKT cells have been also implicated as a source of IL-17 production in different animal models of inflammation [51–56] and have been proposed as the link between gut inflammation and joint pathology in spondyloarthritis [57]. Trafficking of intestinal lymphocytes to the joints has been proposed as a theory to explain the concurrence of gut and joint inflammation [6,25,58]. On the other hand, differentiation of Th17 and $\gamma\delta$ T cells requires a specific cytokine environment that includes IL-1 β , IL-6 IL-23 and TGF- β [59–61]. Here, we show that the expression of these cytokines are induced during *Salmonella* enterocolitis and are abrogated by consumption of LCFM. In our model, the expression of intestinal inflammatory molecules concurs with the generation of joint lesions; in contrast, the abrogation of the expression of intestinal IL-17 and related cytokines prevents synovitis. This strongly suggests that the immunomodulatory effect of LCFM may have been achieved first in the gut and was subsequently expressed in a distant immune site. Our findings are in agreement with those reported by Inoue et al using a murine model of atopic dermatitis. They found that oral administration of *Lactobacillus* spp. diminished the expression of CD86 and IL-23 in Peyer's patches and mesenteric lymph nodes as well as in skin lesions [62]. Our results suggest that LCFM consumption alters the intestinal milieu necessary for differentiation of the immune cells involved in the generation of joint inflammation.

References

- Colmegna I, Cuchacovich R, Espinoza LR (2004) HLA-B27-Associated Reactive Arthritis: Pathogenetic and Clinical Considerations. Clin Microbiol Rev 2: 348–369. PubMed: 15084505.
- Sinha R, Aggarwal A, Prasad K, Misra R (2003) Sporadic enteric reactive arthritis and undifferentiated spondyloarthropathy: evidence for involvement of *Salmonella* typhimurium. J Rheumatol 30: 105–113. PubMed: 12508398.
- Barthel M, Hapfelmeier S, Quintanilla-Martínez L, Kremer M, Rohde M et al. (2003) Pretreatment of mice with streptomycin provides a *Salmonella enterica* serovar Typhimurium colitis model that allows

It is likely that down regulation of intestinal IL-23 by LCFM itself generates a protective effect on the joint. Numerous studies have suggested that overproduction of IL-23 is associated to joint pathologies [63–65] and the intestine appears as a key site of IL-23 production. As an example, it was found that in ankylosing spondylitis patients IL-23 expression is upregulated in the ileum. An explanation for this association has been recently achieved. Enteses contain resident lymphocytes expressing IL-23 receptor; IL-23 induces the expression of IL-17 and IL-22 in these T cells, hence triggering local joint inflammation [66]. Therefore, prevention of intestinal IL-23 expression during *Salmonella* enterocolitis could explain the abrogation of synovitis found in mice fed with LCFM.

Altogether our results show that consumption of LCFM prior to *Salmonella* enterocolitis onset abrogates intestinal inflammatory response to the pathogen. Expression of inflammatory cytokines was avoided in gut and joint tissues. Hence, prevention of the expression of these cytokines in mice fed with the probiotic could impair the differentiation of immune cells involved in the development of reactive arthritis. Furthermore, the abrogation of IL-23 expression in the intestine of mice receiving LCFM could account for the prevention of synovitis.

Regarding the pathogenesis of ReA, the role and mechanism of action of IL-23 are still not fully understood. However, it seems that IL-23/IL-17 is an important axis in ReA; thus interfering with the IL-23/IL-17 pathway could be a potential therapeutic target in the treatment of this disease. A deeper understanding of the functions and actions of IL-23 as well as the immune cells that generate it, may be useful in the management of new methods in the treatment of ReA, including the use of probiotics after the onset of arthritis.

Acknowledgements

We thank Lida Suligoy, María Victoria Vázquez and Giannina Garavello for their superb technical assistance.

Author Contributions

Conceived and designed the experiments: MNL MCC. Performed the experiments: MNL MNG. Analyzed the data: MNL SHS. Contributed reagents/materials/analysis tools: MNL MRAC MIB. Wrote the manuscript: MNL MCC.

analysis of both pathogen and host. Infect Immun 71: 2839–2858. doi: 10.1128/IAI.71.5.2839-2858.2003. PubMed: 12704158.

- Srikanth CV, Cherayil BJ (2007) Intestinal innate immunity and the pathogenesis of *Salmonella* enteritis. Immunol Res 37: 61–78. doi: 10.1007/BF02686090. PubMed: 17496347.
- Godínez I, Raffatellu M, Chu H, Paixão TA, Haneda T et al. (2009) Interleukin-23 Orchestrates Mucosal Responses to *Salmonella enterica* serotype Typhimurium in the Intestine. Infect Immun 1: 387–398. PubMed: 18955477.

6. Jacques P, Elewaut D (2008) Joint expedition: linking gut inflammation to arthritis. *Mucosal Immunol* 1: 364–371. doi:10.1038/mi.2008.24. PubMed: 19079200.
7. Sartor RB (2006) Mechanisms of disease: pathogenesis of Crohn's disease and ulcerative colitis. *Nat Clin Pract Gastroenterol Hepatol* 3: 390–407. doi:10.1038/ncpgasthep.0528. PubMed: 16819502.
8. Packey CD, Sartor RB (2009) Commensal bacteria, traditional and opportunistic pathogens, dysbiosis and bacterial killing in inflammatory bowel diseases. *Curr Opin Infect Dis* 22: 292–301. doi:10.1097/QCO.0b013e32832a8a5d. PubMed: 19352175.
9. Oozeer R, Goupil-Feuillerat N, Alpert CA, van de Guchte M, Anba J et al. (2002) *Lactobacillus casei* is able to survive and initiate protein synthesis during its transit in the digestive tract of human flora-associated mice. *Appl Environ Microbiol* 68: 3570–3574. doi:10.1128/AEM.68.7.3570-3574.2002. PubMed: 12089044.
10. Guerin-Danan C, Chabanet C, Pedone C, Popot F, Vaissade P et al. (1998) Milk fermented with yogurt cultures and *Lactobacillus casei* compared with yogurt and gelled milk: influence on intestinal microflora in healthy infants. *Am J Clin Nutr* 67: 111–117. PubMed: 9440384.
11. Perdigon G, Vintiñi E, Alvarez S, Medina M, Medici M (1999) Study of the possible mechanisms involved in the mucosal immune system activation by lactic acid bacteria. *J Dairy Sci* 82: 1108–1114. doi:10.3168/jds.S0022-0302(99)75333-6. PubMed: 10386296.
12. Pedone CA, Arnaud CC, Postaire ER, Bouley CF, Reinert P (2000) Multicentric study of the effect of milk fermented by *Lactobacillus casei* on the incidence of diarrhoea. *Int J Clin Pract* 54: 568–571. PubMed: 11220983.
13. Pedone CA, Bernabeu AO, Postaire ER, Bouley CF, Reinert P (1999) The effect of supplementation with milk fermented by *Lactobacillus casei* (strain DN-114 001) on acute diarrhoea in children attending day care centres. *Int J Clin Pract* 53: 179–184. PubMed: 10665128.
14. Borruel N, Carol M, Casellas F, Antolin M, de Lara F et al. (2002) Increased mucosal tumour necrosis factor alpha production in Crohn's disease can be downregulated ex vivo by probiotic bacteria. *Gut* 51: 659–664. doi:10.1136/gut.51.5.659. PubMed: 12377803.
15. Borruel N, Casellas F, Antolin M, Llopis M, Carol M et al. (2003) Effects of nonpathogenic bacteria on cytokine secretion by human intestinal mucosa. *Am J Gastroenterol* 98: 865–870. doi:10.1111/j.1572-0241.2003.07384.x. PubMed: 12738469.
16. Noto Llana M, Sarnacki SH, Vázquez MV, Gartner AS, Giacomodonato MN et al. (2012) *Salmonella enterica* induces joint inflammation and the expression of IL-17 in draining lymph nodes early after the onset of enterocolitis in mice. *Infect Immun* 6: 2231.
17. Hapfelmeier S, Hardt W (2005) A Mouse Model for *S. typhimurium*-Induced Enterocolitis. *Trends Microbiology* 13: 497–503. doi:10.1016/j.tim.2005.08.008.
18. De Moreno de Leblanc A, del Carmen S, Zurita-Turk M, Santos Rocha C, van de Guchte M et al. (2010) Importance of IL-10 Modulation by Probiotic Microorganisms in Gastrointestinal Inflammatory Diseases. *International Scholarly Research Network*. doi:10.5402/2011/892971.
19. dos Santos LR, do Nascimento VP, de Oliveira SD, Flores ML, Pontes AP et al. (2001) Polymerase Chain Reaction (PCR) for the Detection of *Salmonella* in Artificially Inoculated Chicken Meat. *Rev Inst Med Trop Sao Paulo* 5: 247–250. PubMed: 11696845.
20. Giacomodonato MN, Sarnacki SH, Noto Llana M, García Cattaneo AS, Uzzau S et al. (2009) Impaired Synthesis and Secretion of SopA in *Salmonella* Typhimurium *dam* Mutants. *FEMS Microbiol Lett* 1: 71–77. PubMed: 19191875.
21. Hovsepian E, Penas F, Goren NB (2010) 15-deoxy- Δ prostaglandin GJ2 but not rosiglitazone regulates metalloproteinase 9, Nos-2, and cyclooxygenase 2 expression and functions by peroxisome proliferators-activated receptor γ -dependent and independent mechanisms in cardiac cells. *Shock* 34: 60–67. doi:10.1097/SHK.0b013e3181cdc398. PubMed: 19997048.
22. Atorrasagasti C, Peixoto E, Aquino JB, Kippes N, Malvicini M et al. (2013) Lack of the matricellular protein SPARC (secreted protein, acidic and rich in cysteine) attenuates liver fibrogenesis in mice. *PLOS ONE* 8: e54962. doi:10.1371/journal.pone.0054962. PubMed: 23408952.
23. Wang Q, Fang CH, Hasselgren PO (2001) Intestinal permeability is reduced and IL-10 levels are increased in septic IL-6 knockout mice. *Am J Physiol Regul Integr Comp Physiol* 281: R1013–R1023. PubMed: 11507020.
24. Egan PJ, van Nieuwenhuijze A, Campbell IK, Wicks IP (2008) Promotion of the Local Differentiation of Murine Th17 Cells by Synovial Macrophages During Acute Inflammatory Arthritis. *Arthritis Rheum* 58: 3720–3729. doi:10.1002/art.24075. PubMed: 19035489.
25. Jacques P, Mielants H, Coppieters K, De Vos M, Elewaut D (2007) The intimate relationship between gut and joint in spondyloarthropathies. *Curr Opin Rheumatol* 4: 353–357. PubMed: 17551365.
26. Dhanoa A, Fatt QK (2009) Non-typhoidal *Salmonella* bacteraemia: epidemiology, clinical characteristics and its association with severe immunosuppression. *Ann Clin Microbiol Antimicrob* 8: 15–22. doi:10.1186/1476-0711-8-15. PubMed: 19445730.
27. Kitajima S, Takuma S, Morimoto M (1999) Changes in colonic mucosal permeability in mouse colitis induced with dextran sulfate sodium. *Exp Anim* 48: 137–143. doi:10.1538/expanim.48.137. PubMed: 10480018.
28. Hacini-Rachinel F, Gheit H, Le Ducreux JB, Dif F, Nancey S et al. (2009) Oral probiotic control skin inflammation by acting on both effector and regulatory T cells. *PLOS ONE* 3: e4903. PubMed: 19300508.
29. Kwon HK, Lee CG, So JS, Chae CS, Hwang JS et al. (2010) Generation of regulatory dendritic cells and CD4⁺Foxp3⁺ T cells by probiotics administration suppresses immune disorders. *Proc Natl Acad Sci U S A* 107(5): 2159–2164.
30. Guo YY, Wang NZ, Zhao S, Hou LX, Xu YB, et al. (2013) Increased interleukin-23 is associated with increased disease activity in patients with rheumatoid arthritis. *Chin Med J (Engl)* 5: 850–4.
31. Servin AL (2004) Antagonistic activities of lactobacilli and bifidobacteria against microbial pathogens. *FEMS Microbiol Rev* 28: 405–440. doi:10.1016/j.femsre.2004.01.003. PubMed: 15374659.
32. Gupta P, Andrew H, Kirschner BS, Guandalini S (2000) Is lactobacillus GG helpful in children with Crohn's disease? Results of a preliminary, open-label study. *J Pediatr Gastroenterol Nutr* 31: 453–457. doi:10.1097/00005176-200010000-00024. PubMed: 11045848.
33. Reiff C, Delday M, Rucklidge G, Reid M, Duncan G et al. (2009) Balancing inflammatory, lipid, and xenobiotic signaling pathways by VSL#3, a biotherapeutic agent, in the treatment of inflammatory bowel disease. *Inflamm Bowel Dis* 15: 1721–1736. doi:10.1002/ibd.20999. PubMed: 19639558.
34. Castillo NA, de Moreno de LeBlanc A, Galdeano M C, Perdigon G. (2013) Comparative Study of the protective capacity against *Salmonella* infection between probiotic and nonprobiotic Lactobacilli. *J Appl Microbiol* 3: 861–76.
35. Salminen S, von Wright A, Morelli L, Marteau P, Brassart D, et al. (1998) Demonstration of safety of probiotics - a review. *Int J Food Microbiol* 1-2: 93–106.
36. Lee YK, Nomoto K, Salminen S, Gorbach SJ (1999) *Handbook of Probiotics*. New York: John Wiley & Sons.
37. Lee YK, Puong KY (2002) Competition for adhesion between probiotics and human gastrointestinal pathogens in the presence of carbohydrate. *Br J Nutr* 1: S101–S108. PubMed: 12215184.
38. Chessa D, Winter MG, Jakomin M, Bäumler AJ. (2009) *Salmonella enterica* serotype Typhimurium Std fimbriae bind terminal alpha (1,2) fucose residues in the cecal mucosa. *Mol Microbiol* 4: 864–75.
39. Fábrega A, Vila J (2013) *Salmonella enterica* serovar Typhimurium skills to succeed in the host: virulence and regulation. *Clin Microbiol Rev* 2: 308–341.
40. Rodriguez-Diaz J, Rubio-del-Campo A, Yebra MJ (2012) *Lactobacillus casei* ferments the N-Acetylglucosamine moiety of fucosyl- α -1,3-N-acetylglucosamine and excretes L-fucose. *Appl Environ Microbiol* 13: 4613–4619.
41. Liu Z, Zhang P, Ma Y, Chen H, Zhou Y et al. (2011) *Lactobacillus plantarum* prevents the development of colitis in IL-10-deficient mouse by reducing the intestinal permeability. *Mol Biol Rep* 38: 1353–1361. doi:10.1007/s11033-010-0237-5. PubMed: 20571906.
42. Ewaschuk JB, Diaz H, Meddings L, Diederichs B, Dmytrash A et al. (2008) Secreted bioactive factors from *Bifidobacterium infantis* enhance epithelial cell barrier function. *Am J Physiol Gastrointest Liver Physiol* 295: G1025–G1034. doi:10.1152/ajpgi.90227.2008. PubMed: 18787064.
43. Zakostelska Z, Kverka M, Klimesova K, Rossmann P, Mrazek J, et al. (2011) Lysate of probiotic *Lactobacillus casei* DN-114 001 ameliorates colitis by strengthening the gut barrier function and changing the gut microenvironment. *PLoS One* 11: e27961.
44. Boyle EC, Brown NF, Finlay BB (2006) *Salmonella enterica* serovar Typhimurium effectors SopB, SopE, SopE2 and SipA disrupt tight junction structure and function. *Cell Microbiol* 12: 1946–1957. PubMed: 16869830.
45. Raymond B, Young JC, Pallett M, Endres RG, Clements A et al. (2013) Subversion of trafficking, apoptosis, and innate immunity by type III secretion system effectors. *Trends Microbiol*. doi:pii: S0966-842X(13)00117-0 10.1016/j.tim.2013.06.008.
46. Zierler MK, Galán JE (1995) Contact with cultured epithelial cells stimulates secretion of *Salmonella typhimurium* invasion protein InvJ. *Infect Immun* 63: 4024–4028. PubMed: 7558314.
47. Jeon SG, Kayama H, Ueda Y, Takahashi T, Asahara T et al. (2012) Probiotic *Bifidobacterium breve* Induces IL-10-Producing Tr1 Cells in the Colon. *PLoS Pathog* 8(5): e1002714. PubMed: 22693446.

48. Chung YW, Choi JH, Oh T-Y, Eun CS, Han DS (2008) *Lactobacillus casei* prevents the development of dextran sulphate sodium-induced colitis in Toll-like receptor 4 mutant mice. Clin Exp Immunol, 151: 182–189. doi:10.1111/j.1365-2249.2007.03549.x. PubMed: 18005362.
49. Noto Llana M, Sarnacki SH, Giacomodonato MN, Caccuri RL, Blanco GA et al. (2009) Sublethal infection with *Salmonella* Enteritidis by the natural route induces intestinal and joint inflammation in mice. Microbes Infect 11: 74–82. doi:10.1016/j.micinf.2008.10.010. PubMed: 19022393.
50. Schulz SM, Köhler G, Holscher C, Iwakura Y, Alber G (2008). Available: IL-17A is produced by Th17, gamma delta T cells and other CD4- lymphocytes during infection with *Salmonella enterica* serovar Enteritidis and has a mild effect in bacterial clearance..Int Immunol. 9: 1129–38
51. Diaz-Peña R, Vidal-Castifeira JR, Alonso-Arias R et al. (2010) Association of the KIR3DS1_013 and KIR3DL1_004 alleles with susceptibility to ankylosing spondylitis. Arthritis Rheum 62: 1000–1006. doi:10.1002/art.27332. PubMed: 20131260.
52. Poli A, Michel T, Thérésine M et al. (2009) CD56bright natural killer (NK) cells: an important NK cell subset. Immunology 126: 458–465. doi: 10.1111/j.1365-2567.2008.03027.x. PubMed: 19278419.
53. Peritt D, Robertson S, Gri G et al. (1998) Cutting edge: differentiation of human NK cells into NK1 and NK2 subsets. J Immunol 161: 5821–5824. PubMed: 9834059.
54. Cella M, Fuchs A, Vermi W et al. (2009) A human natural killer cell subset provides an innate source of IL-22 for mucosal immunity. Nature; 457: 722–725. PubMed: 18978771.
55. Ciccia F, Accardo-Palumbo A, Alessandro R et al. (2012) Interleukin-22 and interleukin- 22-producing NKp44p natural killer cells in subclinical gut inflammation in ankylosing spondylitis. Arthritis Rheum 64: 1869–1878. doi:10.1002/art.34355. PubMed: 22213179.
56. Bjarnason I, Helgason KO, Geirsson AJ et al. (2003) Subclinical intestinal inflammation and sacroiliac changes in relatives of patients with ankylosing spondylitis. Gastroenterology 125: 1598–1605. doi: 10.1053/j.gastro.2003.08.035. PubMed: 14724811.
57. Al-Mossawi MH, Ridley A, Kiedel S, Bowness P. (2013) The role of natural killer cells, gamma delta T-cells and other innate immune cells in spondyloarthritis. Curr Opin Rheumatol. 4: 434–9.
58. Jacques P, Elewaut D, Mielants H (2010) Interactions Between Gut Inflammation and Arthritis/Spondylitis. Curr Opin Rheumatol 22: 368–374. doi:10.1097/BOR.0b013e3283393807. PubMed: 20485176.
59. Bi Y, Yang R. (2012) Direct and indirect regulatory mechanisms in TH17 cell differentiation and functions. Scand J Immunol. 6: 543–52.
60. Caccamo N, Todaro M, La Manna MP, Sireci G, Stassi G et al. (2012) IL-21 regulates the differentiation of a human $\gamma\delta$ T cell subset equipped with B cell helper activity. PLOS ONE. 7: e41940. doi:10.1371/journal.pone.0041940. PubMed: 22848667.
61. Do JS, Fink PJ, Li L, Spolski R, Robinson J et al. (2010) Cutting edge: spontaneous development of IL-17-producing gamma delta T cells in the thymus occurs via aTGF-beta 1-dependent mechanism. J Immunol 184(4): 1675–1679. doi:10.4049/jimmunol.0903539. PubMed: 20061408.
62. Inoue R, Otsuka M, Nishio A, Ushida K (2007). Available: Primary administration of *Lactobacillus johnsonii* NCC533 in weaning period suppresses the elevation of proinflammatory cytokines and CD86 gene expressions in skin lesions in NC/Nga mice.FEMS Immunol Med microbiol. 1: 67–76
63. Wang X, Lin Z, Wei Q, Jiang Y, Gu J (2009) Expression of IL-23 and IL-17 and effect of IL-23 on IL-17 production in ankylosing spondylitis. Rheumatol Int 29: 1343–1347. doi:10.1007/s00296-009-0883-x. PubMed: 19247658.
64. Wendling D (2010) IL-23 and IL-17 in ankylosing spondylitis. Rheumatol Int 30: 1547. doi:10.1007/s00296-009-1226-7. PubMed: 19888579.
65. Mei Y, Pan F, Gao J, Ge R, Duan Z et al. (2011) Increased serum IL-17 and IL-23 in the patient with ankylosing spondylitis. Clin Rheumatol 30: 269–273. doi:10.1007/s10067-010-1647-4. PubMed: 21161669.
66. Sherlock JP, Joyce-Shaikh B, Turner SP, Chao CC, Sathe M, et al. (2012) IL-23 induces spondyloarthropathy by acting on ROR- γ t+ CD3+CD4-CD8- enthesal resident T cells. Nat Med 7: 1069–76.