




Genetic Variation in FABP4 and Evaluation of Its Effects on Beef Cattle Fat Content

Daniel E. Goszczynski, Juliana Papaleo-Mazzucco, María V. Ripoli, Edgardo L. Villarreal, Andrés Rogberg-Muñoz, Carlos A. Mezzadra, Lilia M. Melucci & Guillermo Giovambattista


To cite this article: Daniel E. Goszczynski, Juliana Papaleo-Mazzucco, María V. Ripoli, Edgardo L. Villarreal, Andrés Rogberg-Muñoz, Carlos A. Mezzadra, Lilia M. Melucci & Guillermo Giovambattista (2017): Genetic Variation in FABP4 and Evaluation of Its Effects on Beef Cattle Fat Content, *Animal Biotechnology*, DOI: [10.1080/10495398.2016.1262868](https://doi.org/10.1080/10495398.2016.1262868)

To link to this article: <http://dx.doi.org/10.1080/10495398.2016.1262868>

 View supplementary material [↗](#)

 Published online: 04 Jan 2017.

 Submit your article to this journal [↗](#)

 Article views: 28

 View related articles [↗](#)

 View Crossmark data [↗](#)

Genetic Variation in *FABP4* and Evaluation of Its Effects on Beef Cattle Fat Content

Daniel E. Goszczynski^a, Juliana Papaleo-Mazzucco^b, María V. Ripoli^a, Edgardo L. Villarreal^b, Andrés Rogberg-Muñoz^a, Carlos A. Mezzadra^b, Lilia M. Melucci^b and Guillermo Giovambattista^a

^aIGEVET – Instituto de Genética Veterinaria “Ing. Fernando Noel Dulout” (UNLP-CONICET LA PLATA), Facultad de Ciencias Veterinarias UNLP, La Plata, Argentina; ^bUnidad Integrada INTA Balcarce, Facultad de Ciencias Agrarias, Universidad Nacional de Mar del Plata (UNMDP), Balcarce, Argentina

ABSTRACT

FABP4 is a protein primarily expressed in adipocytes and macrophages that plays a key role in fatty acid trafficking and lipid hydrolysis. *FABP4* gene polymorphisms have been associated with meat quality traits in cattle, mostly in Asian breeds under feedlot conditions. The objectives of this work were to characterize *FABP4* genetic variation in several worldwide cattle breeds and evaluate possible genotype effects on fat content in a pasture-fed crossbred (Angus-Hereford-Limousin) population. We re-sequenced 43 unrelated animals from nine cattle breeds (Angus, Brahman, Creole, Hereford, Holstein, Limousin, Nelore, Shorthorn, and Wagyu) and obtained 22 single nucleotide polymorphisms (SNPs) over 3,164 bp, including four novel polymorphisms. Haplotypes and linkage disequilibrium analyses showed a high variability. Five SNPs were selected to perform validation and association studies in our crossbred population. Four SNPs showed well-balanced allele frequencies (minor frequency > 0.159), and three showed no significant deviations from Hardy-Weinberg proportions. SNPs showed significant effects on backfat thickness and fatty acid composition ($P < 0.05$). The protein structure of one of the missense SNPs was analyzed to elucidate its possible effect on fat content in our studied population. Our results revealed a possible blockage of the fatty acid binding site by the missense mutation.

KEYWORDS


ALBP; beef; fatty acid; meat quality; SNPs

Fat deposition has been reported as one of the most economically important traits in livestock. Variations in fat concentration contribute to several meat properties (1), affecting its quality and value. Intramuscular fat (IMF) and subcutaneous fat (backfat) are two of the main fat depots in livestock. IMF content and composition are significantly associated with the sensory and nutritional properties of beef (2), partly because of the effect of mono-unsaturated fatty acids (MUFAs), especially oleic acid, on the melting point, which influences beef flavor and tenderness (3). Fatty acid composition also has substantial implications for human health, since saturated fatty acids (SFA) are considered to cause harmful cardiovascular effects (4). On the other hand, MUFAs reduce the circulating concentration of LDL-cholesterol (5). Nowadays, much of the genetic basis that regulates fat deposition is well known, hence genetic control of this process may be possible through favorable alleles in key positions of the genes involved in the pathway (6). Fatty acid binding protein 4 (*FABP4*, Chromosome 14), also known as ALBP, is a functional

and positional candidate gene for IMF, carcass weight, and fatty acid composition in beef cattle (7, 8). The protein encoded by this gene is a cytoplasmic protein that binds long-chain fatty acids and other hydrophobic ligands. It plays many roles such as uptake, transport, and hydrolysis, and is expressed primarily in adipocytes (9). The uptake of fatty acids is essential to trigger pre-adipocyte differentiation and terminal differentiation-related gene expression since these fatty acids act as signal molecules (10). *FABP4* also participates in lipid hydrolysis by interacting with hormone-sensitive lipase (LIPE, HSL) (11).

The *FABP4* gene has been largely studied over the last few years. It has been shown to present SNP associations with marbling, subcutaneous fat depth and fatty acid composition, mostly in Asian breeds under feedlot conditions (7, 8, 12-16). However, these results may not be necessarily comparable with studies performed under other feeding conditions, such as pasture. In this sense, different specific metabolic pathways governed by different genes may be activated by these two feeding

CONTACT D. E. Goszczynski ✉ dgoszczynski@fcv.unlp.edu.ar IGIVET – Instituto de Genética Veterinaria, “Ing. Fernando Noel Dulout” (UNLP-CONICET La Plata), Facultad de Ciencias Veterinarias, Universidad Nacional de La Plata (UNLP), Av. 60 y 118 S/N, La Plata B1900AVW, CC296, Buenos Aires, Argentina. Color versions of one or more of the figures in the article can be found online at www.tandfonline.com/labt.

 Supplemental data for this article can be accessed on the [publisher's website](#).

conditions. Furthermore, much of the beef exported around the world is produced on pasture-based systems, as is the case of Argentina, Brazil, New Zealand, Paraguay, and Uruguay, among other countries (17).

All these features make *FABP4* an important candidate gene for meat quality. Thus, the aims of this study were to characterize the variability of this gene across several cattle breeds with different meat quality, validate some of the genetic variants in a pasture-fed crossbred (Angus-Hereford-Limousin) population and evaluate their association with IMF, backfat thickness (BT), and fatty acid composition. Results should help improve meat quality by complementing other methods of genetic improvement.

Material and methods

Animal samples and DNA extraction

Two groups of samples were collected for this study. The first group comprised blood samples from 43 unrelated purebred animals (Angus, 5; Brahman, 5; Creole, 5; Hereford, 5; Holstein, 5; Limousin, 4; Nelore, 4; Shorthorn, 5; Wagyu, 5). It was used to characterize *FABP4* genetic variation among the different breeds and get an overview of the polymorphism distribution. The second group comprised 260 steers (15-29 month-old), born between 2006 and 2010, and was used to perform population analyses, including SNP validation and association studies. This group of animals had been previously used to evaluate crossbreeding systems under pasture grazing with strategic supplementation at the Experimental Station of the National Institute of Agricultural Technology (INTA, Balcarce, Argentina). Steers included: purebred Angus (A, $n = 44$) and Hereford (H, $n = 26$) steers, their crossbreeds F1 and F2 (1/2A1/2H, $n = 95$), their reciprocal backcrosses ($\frac{3}{4}$ A1/4H and $\frac{3}{4}$ H1/4A, $n = 54$), and steers produced by mating Limousin (L) sires to F1 crossbred cows (1/2L1/4A1/4H, $n = 41$) (Table S1). In total, 54 sires were used, including 17 A (1-16 steers), 18 H (1-11 steers), 8 AH (1-7 steers), 8 HA (1-7 steers), and 4 L (1-34 steers). L sires were mated only with F1-1/2A1/2H cows and some of the A and H sires were mated with more than one genetic group every year. The animals grazed sown pasture (predominantly *Lolium multiflorum*, *Dactylis glomerata*, *Bromus catarthicus*, *Trifolium repens*, and *Trifolium pratense*) and were slaughtered in eight groups. Then, meat blocks were taken from the 13th rib to perform association studies. The decision to sample this experimental population instead of other commercial populations was based on the availability of reliable information in

terms of phenotypic data, management, and genetic background of the animals.

DNA was isolated from blood lymphocytes using Wizard Genomic DNA purification kit (Promega, Madison, WI, USA) following the supplier's instructions, and from meat samples as previously described by Giovambattista et al. (18).

Resequencing study of the bovine *FABP4* gene

Four pairs of primers were designed according to the sequence available at GenBank (Gene ID: 281759, AC_000171.1) to amplify the coding regions of the gene by PCR in the 43 unrelated samples (Table S2). Amplification products were purified with polyethylene glycol 8000 and sequenced in an automatic DNA sequencer MegaBACE 1000 (GE Healthcare, USA), using DYE-namic ET Terminator Kit (GE Healthcare). Raw sequences were edited using Sequence Analyser (GE Healthcare) and genetic variations were identified by direct comparison with the bovine reference sequence.

SNP selection and genotyping

Five SNPs (rs110652478, rs110757796, rs110383592, rs111014258, and rs41729173) presenting variation in A, H, L, or close breeds were selected from the re-sequencing study and/or previous reports to perform association studies in our pasture-fed crossbred population ($N = 260$). SNP rs41729173, a non-coding variant, was located approximately 1500 bp downstream of the re-sequenced region, but had been previously shown to affect meat quality in another L-crossbred population (19). Therefore, despite this SNP was absent in the re-sequencing study, it was considered for genotyping. The other four variants had been shown to affect meat quality in Asian breeds under feedlot conditions (12-14, 16, 20); as a result, we considered them in order to test these effects on our European population under pasture feeding.

Genotyping of the 260 samples was performed by Neogen genotyping service (USA, www.neogen.com) using the Sequenom platform (www.sequenom.com).

Meat quality measurement

Fatty acid content was measured in blocks of meat obtained from the 260 animals of the crossbred population. These blocks, corresponding to the *Longissimus dorsi* muscle (13th rib) were extracted from the carcass 24 hours after slaughter. Prior to slaughter, animal weight and BT were measured. Ultrasound measurements of BT were made between the 12th and 13th ribs

with an ultrasound Aquila Pro Vet (Esaote, Genoa, Italy), with a 3.5 MHz linear transducer and a guide of silicones that adapted the transducer to the curvature of the back of the animal using vegetable oil as coupling agent. IMF and fatty acid composition were then measured as described by Goszczynski et al. (21). The measured fatty acids were: myristic acid (C14:0), myristoleic acid (C14:1), palmitic acid (C16:0), palmitoleic acid (C16:1), stearic acid (C18:0), oleic acid (C18:1 cis-9), linoleic acid (C18:2 cis-9,12), total SFA, total MUFA, and proportion between omega-6 and omega-3 fatty acids ($\Omega6/\Omega3$). C20:0 and other long-chain fatty acids were not included in the analysis since their percentages were lower than 0.5%. The means, standard deviations, and minimum and maximum values of all these measurements are presented in Table S3.

Statistical analysis and association with meat quality

Allele frequencies, Hardy-Weinberg equilibrium (HWE), unbiased expected (h_e) and observed (h_o) heterozygosity, haplotypes, and linkage disequilibrium (LD) among SNPs were estimated and visualized on HAPLOVIEW v4.2 (22).

The association of genotypes with BT, IMF, and fatty acid composition was evaluated using mixed models. BT and IMF were analyzed using the following model:

$$Y_{ijkl} = \mu + GG_j + SG_k + a Z1_i + d Z2_i + \beta W_i + S_l + e_{ijkl}$$

where Y_{ijkl} is observed value of the phenotypic variable, μ is intercept, GG_j is fixed effect of the j^{th} genetic group, SG_k is fixed effect of the k^{th} slaughter group, a is additive effect for the SNP, $Z1_i$ is incidence variable for the additive effect (0 for one of the homozygous genotypes, 1 for the heterozygous genotype, and 2 for the alternative homozygous one), d is dominant effect for the SNP, $Z2_i$ is incidence variable for the dominance effect (0 for both of the homozygous genotypes and 1 for the heterozygous genotype), βW_i is animal weight covariate for the i^{th} animal, S_l is random effect of the l^{th} sire, and e_{ijkl} is random error. The same single trait model was used for fatty acid composition variables, but using ether extract instead of animal weight as covariate.

All statistical analyses were performed using the MIXED procedure of SAS® software. After all the individual SNP-trait-tests were performed, the false discovery rate (FDR) for multiple comparisons was controlled through the Benjamini and Hochberg method (23). When the additive or dominance effects of the SNP were statistically significant ($P < 0.05$), the substitution effect (α) was calculated considering the

frequencies of the major and minor alleles (p and q , respectively), with the following equation (24):

$$\alpha = a + d(q - p)$$

The variance explained by the SNP (σ_{SNP}^2) was also estimated for each SNP-trait test as follows:

$$\sigma_{SNP}^2 = 100(\text{RMS} - \text{FMS})/\text{RMS}$$

where RMS is the residual of the reduced model (SNP effect excluded) and FMS is the residual of the full model (SNP effect included).

Structural modeling

In order to analyze the effects of the missense SNPs on the protein structure, 3D modeling studies were performed using HHpred (25). The protein structure of bovine FABP4 was predicted according to a high resolution model of the human FABP4 protein (3q6l_A) available at the Protein Data Bank (PDB) (E-value = $4E-53$). In addition, the protein structure was also predicted considering the human protein P2, a fatty acid-binding protein expressed in vertebrate peripheral nerve myelin, as template. Additionally, the effects of synonymous variations were analyzed through changes in the codon frequencies according to data available at the Codon Usage Database (<http://www.kazusa.or.jp/codon/cgi-bin/showcodon.cgi?species=9913>).

Results

Resequencing study

The re-sequencing study showed 22 single nucleotide variants, including four novel SNPs (Table 1). Two of these novel SNPs (ss1751108600 and ss1751108601) were located in the promoter region of the gene. The first was detected in Angus and the other in the Zebuine breeds (Nelore and Brahman). The third novel SNP, ss1751108602, was detected in the 5' UTR region in Creole, Limousin, and Nelore. The fourth, ss1751108603, was detected in the 3' UTR region in Angus and Holstein.

The eighteen remaining variants had already been reported in the database and showed a wide distribution among breeds. Interestingly, all these SNPs showed genetic variability in Taurine cattle. Only two missense and two synonymous variants were detected, as most of the SNPs were located in non-coding (11) and intronic (7) regions. Of the 22 mutations detected in this work, 6 were in the promoter region, 1 in the 5' UTR, 4 in coding regions, 3 in the 3' UTR, and 8 in intronic regions.

Table 1. Genetic variants detected in the bovine FABP4 gene by resequencing samples from nine different cattle breeds.

SNP ID	Region	Type	Monomorphic breeds (AA)	Monomorphic breeds (BB)	Polymorphic breeds
ss1751108600	Promoter	Noncoding	Brahman, Creole, Hereford, Holstein, Limousin, Shorthorn, Wagyu	–	Angus
rs133198078	Promoter	Noncoding	Holstein	Brahman, Limousin, Shorthorn	Angus, Creole, Hereford, Nelore, Wagyu
rs132781285	Promoter	Insertion -/G	–	–	Angus, Creole Hereford, Shorthorn, Wagyu
ss1751108601	Promoter	Noncoding	Angus, Creole, Hereford, Holstein, Limousin, Shorthorn, Wagyu	Brahman, Nelore	–
rs110055647	Promoter	Noncoding	Holstein	Limousin	Angus, Creole, Hereford
rs109682576	Promoter	Noncoding	Holstein	Limousin	Angus, Creole, Hereford
ss1751108602	UTR5'	Noncoding	Angus, Brahman, Hereford, Holstein	Creole, Limousin, Shorthorn	Nelore, Wagyu
rs382376907	Intron 1	Noncoding	Brahman, Creole, Holstein, Nelore, Wagyu	–	Angus, Hereford, Limousin
rs109316505	Intron 1	Noncoding	Brahman, Wagyu, Nelore	Limousin	Angus, Creole, Hereford, Holstein
<u>rs110757796</u>	Exon 2	Missense (I/V)	Brahman, Nelore, Creole, Limousin	–	Angus, Hereford, Holstein, Wagyu
rs134173517	Intron 2	Noncoding	Creole, Holstein, Wagyu	–	Brahman, Hereford, Limousin
rs109014985	Intron 2	Noncoding	Limousin, Wagyu	Creole	Brahman, Hereford, Holstein
rs110652478	Exon 3	Missense (V/M)	Creole, Hereford, Limousin, Brahman	–	Holstein, Wagyu
<u>rs110383592</u>	Exon 3- Splicing Region	Synonymous	Holstein, Wagyu	Creole, Hereford	Brahman, Limousin
rs109388335	Intron 3	Noncoding	Brahman	Creole, Limousin, Wagyu	Hereford, Holstein
rs109346428	Intron 3	Noncoding	Creole, Wagyu	Limousin, Brahman	Hereford, Holstein
<u>rs111014258</u>	Intron 3	Noncoding	Nelore, Brahman	Holstein, Shorthorn, Wagyu	Angus, Creole, Hereford, Limousin
rs110370032	Exon 4	Synonymous	Nelore, Limousin, Shorthorn	–	Angus, Brahman, Creole, Hereford, Holstein, Wagyu
rs109077068	UTR3'	Noncoding	Angus, Creole, Holstein, Nelore, Shorthorn	–	Brahman, Hereford, Limousin, Wagyu
ss1751108603	UTR3'	Noncoding	Brahman, Creole, Hereford, Limousin, Nelore, Shorthorn, Wagyu	–	Angus, Holstein
rs110266999	UTR3'	Noncoding	Nelore, Shorthorn, Wagyu	–	Angus, Brahman, Creole, Hereford, Holstein, Limousin
rs109593774	Downstream	Noncoding	Holstein, Nelore, Shorthorn, Wagyu	Brahman	Angus, Creole, Hereford, Limousin

Note: Novel SNPs are indicated in bold. Association studies were then conducted with the underlined SNPs.

Twelve of the variants were transitions, nine were transversions, and one was an INDEL (single insertion).

The haplotypes and LD studies showed high variability. Several haplotypes with frequencies varying from 0.08 to 0.765 and six small linkage blocks were observed. These blocks were mostly composed of two SNPs and were quite dispersed along the gene (Fig. 1).

Statistical analysis

SNP rs110652478, a missense mutation (V/M) that showed variability in Holstein samples of the re-sequencing study, turned out to be monomorphic in the pure Angus group and showed low variability in the 75% Angus group (minor allele frequency, MAF = 0.05). The remaining SNPs showed well-balanced allele frequencies (MAF > 0.159) across populations (Table 2).

According to the HWE test, three of the SNPs (rs41729173, rs111014258, and rs110383592) showed no significant deviations from the theoretical proportions. On the other hand, rs110652478 and rs110757796 showed significant deviations in the whole

population and the 1/2A1/2H group, respectively (Table 3). Excepting rs110652478, h_e ranged from 0.271 (rs41729173 in A) to 0.499 (rs110757796 in 1/2A1/2H), and h_o ranged from 0.273 (rs41729173 in A) to 0.600 (rs111014258 and rs110383592 in 3/4A1/4H).

Four of the five analyzed SNPs were part of a linkage block, which was represented by five haplotypes. The haplotype frequencies ranged from 0.04 to 0.37, and three of them constituted more than 85% of the haplotypes (Fig. 2). The LD study showed that SNPs rs111014258 and rs110383592 were completely linked within our population.

Association study

When analyzed individually, four of the SNPs showed significant associations with different quality traits, namely, SNP rs41729173 with MUFA ($P = 0.043$); rs110383592 with C14:1 ($P = 0.037$), Ω_6/Ω_3 ($P = 0.011$), and BT ($P = 0.040$); rs111014258 was completely linked to rs110383592, thus sharing its effects; and rs110757796 significantly affected C14:1

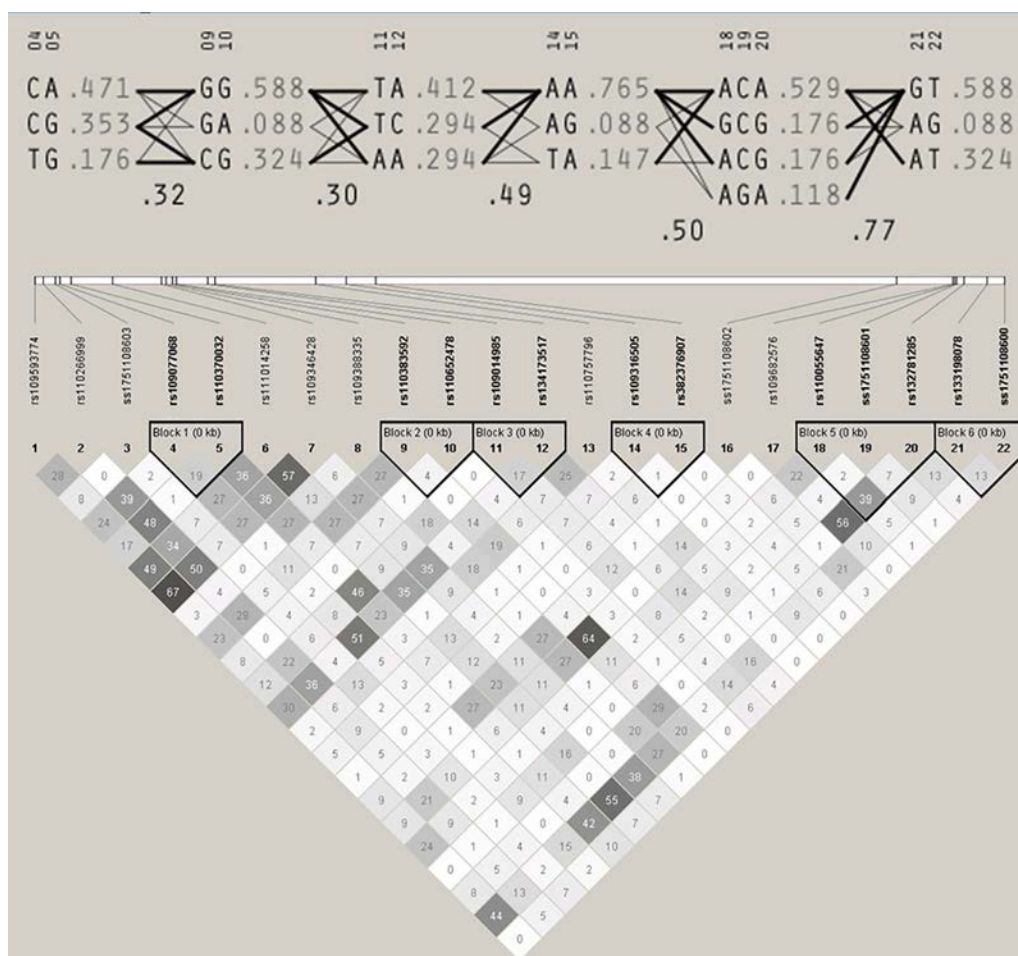


Figure 1. Haplotypes and LD in the FABP4 gene estimated from 43 unrelated samples belonging to nine different cattle breeds. Blocks are indicated with thick lines and r^2 values are shown inside the boxes.

($P = 0.035$) and BT ($P = 0.011$) (Table 4). No significant effects were observed for SNP rs110652478. Despite the associations obtained in this first approach, none of the

effects remained significant when the FDR for multiple comparisons was controlled, as none of them reached the significance threshold corresponding to 48 tests.

Table 2. Allele frequencies for SNPs rs110652478, rs110757796, rs110383592, rs111014258, and rs41729173 in each group and the whole population (global).

Locus	Population						Global
	A	H	$\frac{3}{4}A\frac{1}{4}H$	$\frac{3}{4}H\frac{1}{4}A$	$\frac{1}{2}A\frac{1}{2}H$	$\frac{1}{2}L\frac{1}{4}A\frac{1}{4}H$	
rs41729173							
C	84.09	59.62	71.43	70.83	71.05	68.75	71.79
G	15.91	40.38	28.57	29.17	28.95	31.25	28.21
rs111014258							
C	63.64	26.92	40.00	41.67	40.86	30.49	41.67
T	36.36	73.08	60.00	58.33	59.14	69.51	58.33
rs110383592							
C	63.64	26.92	40.00	41.67	40.96	30.49	41.70
G	36.36	73.08	60.00	58.33	59.04	69.51	58.30
rs110652478							
A	–	23.08	5.00	14.58	13.68	25.61	13.27
G	100.00	76.92	95.00	85.42	86.32	74.39	86.73
rs110757796							
A	31.82	74.00	58.33	58.33	54.26	65.00	54.86
G	68.18	26.00	41.67	41.67	45.74	35.00	45.14
N	44	26	30	24	95	41	260

Note: N: sample size; A: Angus; H: Hereford; $\frac{3}{4}A\frac{1}{4}H$: 75% Angus steers; $\frac{3}{4}H\frac{1}{4}A$: 75% Hereford steers; $\frac{1}{2}A\frac{1}{2}H$: 50% Angus 50% Hereford steers; $\frac{1}{2}L\frac{1}{4}A\frac{1}{4}H$: Limousin-crossbred steers.

Table 3. Unbiased expected heterozygosity (h_e), observed heterozygosity (h_o), and Hardy-Weinberg equilibrium p-value (HWE p-value) for rs110652478, rs110757796, rs110383592, rs111014258, and rs41729173 in each group and the whole population (global).

SNP	A			H			$\frac{3}{4}A\frac{1}{4}H$			$\frac{3}{4}H\frac{1}{4}A$		
	h_e	h_o	HWE p-value	h_e	h_o	HWE p-value	h_e	h_o	HWE p-value	h_e	h_o	HWE p-value
rs41729173	0.27	0.27	1.00	0.49	0.50	1.00	0.42	0.50	0.38	0.42	0.33	0.34
rs111014258	0.47	0.41	0.51	0.40	0.38	1.00	0.49	0.60	0.26	0.50	0.42	0.67
rs110383592	0.47	0.41	0.52	0.40	0.38	1.00	0.49	0.60	0.26	0.50	0.42	0.67
rs110652478	–	–	–	0.36	0.15	0.01*	0.10	0.03	0.05	0.25	0.12	0.04*
rs110757796	0.44	0.32	0.08	0.39	0.36	0.64	0.49	0.50	1.00	0.50	0.33	0.20

SNP	$\frac{1}{2}A\frac{1}{2}H$			$\frac{1}{2}L\frac{1}{4}A\frac{1}{4}H$			Global		
	h_e	h_o	HWE p-value	h_e	h_o	HWE p-value	h_e	h_o	HWE p-value
rs41729173	0.41	0.43	0.80	0.43	0.52	0.27	0.41	0.42	0.85
rs111014258	0.49	0.47	0.83	0.43	0.46	0.72	0.49	0.46	0.93
rs110383592	0.49	0.47	1.00	0.43	0.46	0.72	0.49	0.46	0.94
rs110652478	0.24	0.06	<0.01*	0.39	0.12	<0.01*	0.23	0.07	<0.01*
rs110757796	0.50	0.36	0.05	0.46	0.40	0.49	0.50	0.37	0.08

Structural analysis

In this work, rs110757796 affected myristoleic acid content. As this SNP had been reported to affect fatty acid composition in Asian cattle by acting specifically on palmitic and palmitoleic acid contents (12, 14), we decided to predict and analyze the possible structural effects of this mutation to provide a reasonable explanation for

these associations. The tertiary structure of the bovine FABP4 protein was predicted from a high resolution model of human FABP4 (3q6l_A). The tool “compute hydrogen bonds” of the software Swiss-PdbViewer, which considers distance, angle, and atom type, was used to compare interactions among residues of the structures. SNP rs110757796 (Ile74Val) involved residues whose side chains were oriented towards the surface of the protein. This SNP caused small displacements in the proximity of the mutated site, which in turn caused a rearrangement of the hydrogen bonds among residues Thr75, Pro76, Asp77, Asp78, and Arg79 (Fig. S1). In humans, this zone is involved in the interaction with the hydrophobic tail of the ligand through residue 76. Interestingly, the amino acid change also seemed to block the binding site to the carboxyl group of the ligand by bringing the side chains of Arg127 and Tyr129 together and allowing the formation of a hydrogen bond between them (Fig. S1). These two residues are responsible for the stabilization of the polar group of the ligand through hydrogen bonds and were now forming hydrogen bonds with each other. However, this blockade was not observed when peripheral membrane protein P2 from human myelin was considered as template for the study. This protein showed the highest score (528.0) in the alignment of HMM profiles provided by the application.

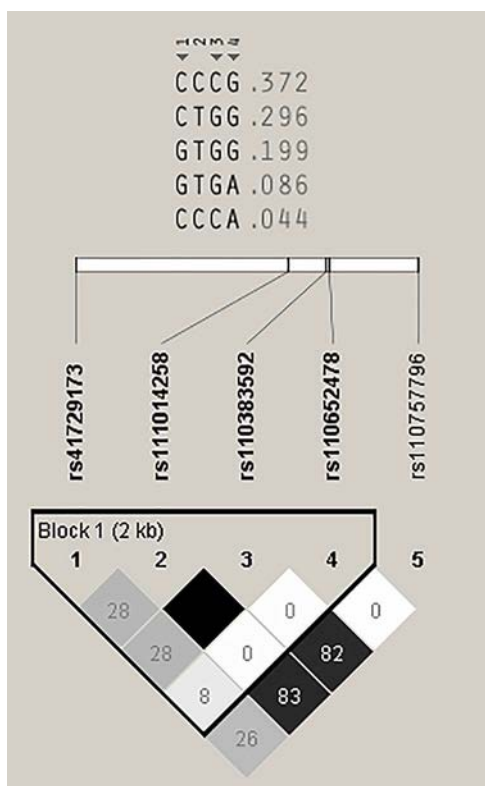


Figure 2. Haplotypes and LD for SNPs rs110652478, rs110757796, rs110383592, rs111014258, and rs41729173 of the bovine FABP4 gene estimated with the solid spine of LD method in an Angus-Hereford-Limousin crossbred population ($N = 260$). Blocks are indicated with thick lines and r^2 values are shown inside the boxes.

Discussion

In the re-sequencing study, twenty-two mutations were detected, which resulted in one SNP every 144 bp over a total of 3,164 bp analyzed. When *B. taurus* and *B. indicus* were evaluated separately, the diversity rates were one SNP every 151 bp for the Taurine group and one SNP every 452 bp for the Zebuine group. Seven of the 22 SNPs (32%) were shared by both groups. A few years ago, results from The Bovine Hapmap Consortium (26)

Table 4. Genotype association with meat quality traits in an Angus-Hereford-Limousin crossbred population.

SNP/Trait	Least square means			Dominance effect	Additive effect	Substitution effect	σ_{SNP}^2
rs41729173	CC (N = 130)	CG (N = 109)	GG (N = 18)				
MUFA	47.727 ± 0.289	47.969 ± 0.291	48.973 ± 0.591	-0.381 ± 0.381 (P = 0.319)	0.623 ± 0.306 (P = 0.043)	(C>G) 0.789	0.056
rs110383592	GG (N = 91)	GC (N = 120)	CC (N = 48)				
C14:1	0.509 ± 0.029	0.557 ± 0.027	0.468 ± 0.041	0.069 ± 0.033 (P = 0.037)	0.020 ± 0.024 (P = 0.400)	(G>C) 0.009	0.860
Ω6/Ω3	3.033 ± 0.135	2.843 ± 0.128	3.391 ± 0.191	-0.369 ± 0.144 (P = 0.011)	0.179 ± 0.108 (P = 0.099)	(G>C) 0.240	5.193
BT	6.852 ± 0.157	6.869 ± 0.145	7.416 ± 0.227	-0.265 ± 0.185 (P = 0.154)	0.282 ± 0.136 (P = 0.040)	(G>C) 0.326	1.082
rs110757796	AA (N = 93)	AG (N = 96)	GG (N = 68)				
C14:1	0.504 ± 0.028	0.569 ± 0.029	0.496 ± 0.035	0.069 ± 0.032 (P = 0.035)	0.004 ± 0.021 (P = 0.846)	(A>G) -0.003	0.474
BT	6.841 ± 0.153	6.801 ± 0.154	7.458 ± 0.194	-0.348 ± 0.183 (P = 0.059)	0.308 ± 0.121 (P = 0.011)	(A>G) 0.342	2.859

Note: N, number of samples; BT, Back fat thickness (mm); C14:1, myristoleic acid content (percentage of total fatty acids); MUFA, total monounsaturated fatty acids content (percentage of total fatty acids); Ω6/Ω3, ratio of omega-6 /omega-3 fatty acids. SNP rs110757796 (missense- exon 2) was later analyzed through structural modeling to identify possible causes for the observed effects.

showed one SNP every 714 bp for Angus and Holstein, and one SNP every 285 bp for Brahman. Our rates of variability were much higher for the Taurine group, but lower for the Zebuine group. These results agree with those reported by Cho et al. (20), who detected a total of 15 SNPs in the *FABP4* gene in Korean cattle.

High variability was also reflected in the haplotypes and LD analyses, which showed small blocks dispersed along the gene. This may be due to the different historical and geographical origins of the Taurine and Zebuine breeds included in the study or to the high degree of polymorphism in this gene.

The high level of variability observed in *FABP4* was similar to that detected by our group in the bovine *LIPE* gene (21), which encodes an enzyme that interacts with *FABP4* in lipid hydrolysis, using the same sample panel. Currently, the SNPdb has more than 95 million polymorphisms for *B. taurus*, but two thirds of them are yet to be validated and only 11189 show frequency data. These figures remark the importance of performing re-sequencing and SNP validation studies in different cattle breeds. In this sense, the present work allowed the validation of five SNPs in an A-H-L crossbred population fed on pasture.

None of the associations with meat quality traits remained significant after the FDR for multiple comparisons was controlled. However, if we consider individual evaluations, our results are partially consistent with previous reports by other authors. Michal et al. associated SNP rs41729173 (downstream region) with marbling and subcutaneous fat in F2 Wagyu-Limousin crosses (19). Instead, in our population this SNP was associated with total MUFA content. It is worth mentioning that the GG genotype, which was different from the other two, was composed of only 18 animals; therefore, this result should be interpreted with caution. In our study, SNP rs110757796 was associated with BT, as reported by Cho et al. (20). However, instead of the associations with palmitoleic and palmitic acid contents reported by Hoashi et al. (12) and Narukami et al. (14), respectively, we detected an association with myristoleic acid content.

The fact that the heterozygous AG genotype showed higher accumulation is noteworthy and may be explained by different scenarios. One of them may be related with the presence of sufficient binding capability to saturate uptake (provided by allele A) and, at the same time, limit intracellular trafficking destined to processing or releasing the fatty acid (provided by allele G). SNP rs110652478, which was associated with marbling in Korean and Japanese cattle by other authors, behaved differently in our study, as it had no significant effects on the evaluated traits. The association of rs110383592 with marbling reported by Barendse et al. (7) and Hoashi et al. (12) was not observed in our sample, but significant effects were observed on myristoleic acid content, omega-6/omega-3 proportion, and BT. Interestingly, this SNP was linked to rs111014258, which had been previously associated with BT in Korean cattle by Cho et al. (20). Differences between previous reports and our results may be due to racial and environmental differences among populations, experimental designs and definition, and evaluation of the variables employed. In this sense, most of the previous studies were performed under feedlot conditions (14, 20); thus, results are not necessarily comparable with those obtained from pasture-based systems. For instance, different diets may activate specific metabolic pathways governed by different genes. Despite partial differences with previous reports, the results obtained here provide additional information about the impact of *FABP4* polymorphisms on fatty acid content of meat from pasture-based systems, particularly when most of the exported beef around the world is produced on pasture.

Although several associations have been previously reported in other breeds, none of them involved bioinformatic studies to support such associations. The present study and two others reports (12, 14) have found that SNP rs110757796 affected fat content. Since this mutation caused an amino acid change (I74 V) in the ligand binding domain of the protein, it was analyzed through structural modeling to provide a functional explanation to the associations. Results showed that SNP rs110757796 may affect the side chain of

Arg127, which plays a key role by binding to the carboxylic group of the ligand via hydrogen bonds (27). When the side chain is displaced, the affinity for palmitic acid and other ligands may be affected, especially if Arg127 and Tyr129 form hydrogen bonds with each other, hindering ligand stabilization. Changes in the affinity for certain ligands may alter their transport within the cell, thereby increasing or decreasing their concentration in tissues. A precise view of the interaction between the residues and a molecule of palmitic acid can be observed in model 2HNX available at PDB. Since this finding is consistent with the results obtained by Hoashi et al. (12) and Narukami et al. (14), who reported associations of this SNP with palmitoleic and palmitic acid contents, respectively, the bioinformatic analyses performed in this study may help explain these results. For instance, Hoashi et al. (12) observed that variant V/V (GG genotype) exhibited a lower palmitoleic acid content than variant I/I (AA genotype), suggesting a decrease in the binding capability of adipocytes for this particular fatty acid, thus lowering uptake and accumulation in muscle adipocytes of Black Japanese cattle. On the other hand, the results obtained in our work showed that variant V/V had higher subcutaneous fat thickness than the other two genotypes. Considering that muscle and subcutaneous fat are different tissues, several scenarios may be proposed to explain this effect, since different mechanisms, processes and needs may be operating on these tissues. One of such scenarios may be related with diminished intra-cellular trafficking for processing or releasing fatty acids. Additionally, as European cattle breeds tend to deposit fat in subcutaneous tissues first, uptake may not be affected as much as the other processes due to spontaneous diffusion of fatty acids in the cytoplasm. According to our results, FABP4 may also be involved in the content regulation of myristoleic acid, which has been suggested for treatment of prostate cancer due to its cytotoxic and effective cell death inducer activity (28), and the omega-6/omega-3 ratio, which is related to the pathogenesis of many diseases, including cardiovascular disease, cancer, and inflammatory and autoimmune diseases (29).

As shown in the present work, structural modeling may provide partial explanations, or at least additional information, about the effects of certain missense mutations on an organism, helping to identify desirable or inconvenient mutations according to breeding preferences. This applies for most metabolic pathways regulating economically important traits such as meat quality, puberty and growth. Herein, our results indicate that the effect of rs110757796 on meat quality traits may be due to a blockage of the ligand binding site of the

protein. Although this kind of analysis greatly depends on the availability of previous knowledge about the protein domains and key-residues, it did not represent an obstacle here, as FABP4 is a very-well studied protein given its importance in fat metabolism.

Conclusions

FABP4 is a highly polymorphic gene. Some polymorphisms may be responsible for changes in meat quality traits, as significant genotype effects were observed in the individual SNP-trait tests, although none of the associations remained significant after adjusting p-values for multiple comparisons. The effects observed here and in other works may be partially explained by structural modifications in key spots of the protein. SNPs should be evaluated in independent populations with *in vitro* and *in vivo* analyses to explain the mechanisms by which these polymorphisms would be involved in meat fat content and composition.

Ethical approval

All animal experiments were carried out in accordance with the U.K. Animals (Scientific Procedures) Act, 1986 and associated guidelines, EU Directive 2010/63/EU for animal experiments, and the National Institutes of Health guide for the care and use of Laboratory animals (NIH Publications No. 8023, revised 1978). All procedures were also in accordance with the ethical standards of CICUAL (Institutional Committee on Care and Use of Experimental Animals) from the School of Veterinary Sciences of the National University of La Plata, Buenos Aires, Argentina.

Acknowledgments

The authors thank A. Di Maggio for revising and editing the manuscript. DEG is a fellow of CONICET.

Conflict of interest

The authors declare that they have no conflict of interest.

Funding

This study was supported by grants from Agencia Nacional de Promoción Científica y Tecnológica (ANPCyT) (PICT 08-04156; PICTR2002-0017), Consejo Nacional de Investigaciones Científicas y Técnicas (CONICET) (PIP2010-11220090100379), Instituto Nacional de Tecnología Agropecuaria (INTA) (PNPA-1126033; PNCAR-334), Universidad Nacional de Mar del Plata (UNMdP) (AGR456/14; AGR393/12; AGR330/10; AGR270/08; AGR202/05; AGR137/01), and Universidad Nacional de La Plata (UNLP) (ID V206/12, JI 9861/3/11). INTA and UNMdP bred the animals and provided the phenotype records employed

in the association study. CONICET and UNLP performed the genotype analyses.

References

- Shahidi F. Lipid-derived flavors in meat products. In: Kerry J, Kerry J, Ledward D, eds. *Meat processing: improving meat quality*. Woodhead: Cambridge; 2002: 105–121.
- Thompson JM. The effects of marbling on flavour and juiciness scores of cooked beef, after adjusting to a constant tenderness. *Aust J Exp Agric* 2004; 44(7):645–652. <http://www.publish.csiro.au/paper/EA02171>.
- Melton SL, Amiri M, Davis GW, Backus WR. Flavor and chemical characteristics of ground beef from grass-, forage-grain- and grain-finished steers. *J Anim Sci* 1982; 55(1):77–87. doi:10.2134/jas1982.55177x.
- Mozaffarian D, Ascherio A, Hu FB, et al. Interplay between different polyunsaturated fatty acids and risk of coronary heart disease in men. *Circulation* 2005; 111(2):157–164. doi:10.1161/01.CIR.0000152099.87287.83.
- Woollett LA, Spady DK, Dietschy JM. Saturated and unsaturated fatty-acids independently regulate low-density-lipoprotein receptor activity and production-rate. *J Lipid Res* 1992; 33(1):77–88.
- Fortes MRS, Curi RA, Chardulo LAL, et al. Bovine gene polymorphisms related to fat deposition and meat tenderness. *Genet Mol Biol* 2009; 32(1):75–82. doi:10.1590/S1415-47572009000100011.
- Barendse W, Bunch RJ, Thomas MB, Harrison BE. A splice site single nucleotide polymorphism of the fatty acid binding protein 4 gene appears to be associated with intramuscular fat deposition in longissimus muscle in Australian cattle. *Anim Genet* 2009; 40(5):770–773. doi:10.1111/j.1365-2052.2009.01913.x.
- Maharani D, Jung Y, Jung WY, et al. Association of five candidate genes with fatty acid composition in Korean cattle. *Mol Biol Rep* 2012; 39(5):6113–6121. doi:10.1007/s11033-011-1426-6.
- Kaikaus RM, Bass NM, Ockner RK. Functions of fatty acid binding proteins. *Experientia* 1990; 46(6):617–630.
- Duplus E, Glorian M, Forest C. Fatty acid regulation of gene transcription. *J Biol Chem* 2000; 275(40):30749–30752. doi:10.1074/jbc.R000015200.
- Shen W, Liang Y, Hong R, et al. Characterization of the functional interaction of adipocyte lipid-binding protein with hormone-sensitive lipase. *J Biol Chem* 2001; 276(52):49443–49448. doi:10.1074/jbc.M104095200.
- Hoashi S, Hinenoya T, Tanaka A, et al. Association between fatty acid compositions and genotypes of FABP4 and LXR-alpha in Japanese black cattle. *BMC Genet* 2008; 9:84. doi:10.1186/1471-2156-9-84.
- Lee SH, Werf JHJ, Van Der, Lee SH, et al. Genetic polymorphisms of the bovine Fatty acid binding protein 4 gene are significantly associated with marbling and carcass weight in Hanwoo (Korean Cattle). *Anim Genet* 2010; 41(4):442–444. doi:10.1111/j.1365-2052.2010.02024.x.
- Narukami T, Sasazaki S, Oyama K, Nogi T, Taniguchi M, Mannen H. Effect of DNA polymorphisms related to fatty acid composition in adipose tissue of Holstein cattle. *Anim Sci J* 2011; 82(3):406–411. doi:10.1111/j.1740-0929.2010.00855.x.
- Oh DY, Lee YS, La BM, Yeo JS. Identification of the SNP (single nucleotide polymorphism) for fatty acid composition associated with beef flavor-related FABP4 (fatty acid binding protein 4) in Korean cattle. *Asian-Australasian J Anim Sci* 2012; 25(7):913–920. doi:10.5713/ajas.2012.12078\rajas-25-7-913-2[pil].
- Shin SC, Heo JP, Chung ER. Genetic variants of the FABP4 gene are associated with marbling scores and meat quality grades in Hanwoo (Korean cattle). *Mol Biol Rep* 2012; 39(5):5323–5330. doi:10.1007/s11033-011-1331-z.
- USDA (United States Department of Agriculture). Trade of All Meats to Expand in 2016. Foreign Agricultural Service; 2016. http://apps.fas.usda.gov/psdonline/circulars/livestock_poultry.PDF
- Giovambattista G, Ripoli M V, Lirón JP, Villegas Castagnasso EE, Peral-García P, Lojo MM. DNA typing in a cattle stealing case. *J Forensic Sci* 2001; 46(6):1484–1486.
- Michal JJ, Zhang ZW, Gaskins CT, Jiang Z. The bovine fatty acid binding protein 4 gene is significantly associated with marbling and subcutaneous fat depth in Wagyu x Limousin F 2 crosses. *Anim Genet* 2006; 37(4):400–402.
- Cho S, Park TS, Yoon D, et al. Identification of genetic polymorphisms in FABP3 and FABP4 and putative association with back fat thickness in Korean native cattle. *BMB Rep* 2008; 41(1):29–34.
- Goszczynski DE, Mazzucco JP, Ripoli MV, et al. Characterization of the bovine gene LIPE and possible influence on fatty acid composition of meat. *Meta Gen* 2014; 2:746–760. doi:10.1016/j.mgene.2014.09.001.
- Barrett JC, Fry B, Maller J, Daly MJ. Haploview: analysis and visualization of LD and haplotype maps. *Bioinformatics* 2005; 21(2):263–265. doi:10.1093/bioinformatics/bth457.
- Benjamini Y, Hochberg Y. Controlling the false discovery rate: a practical and powerful approach to multiple testing. *J R Stat Soc B* 1995; 57(1):289–300. doi:10.2307/2346101.
- Falconer DS, Mackay TFC. *Introduction to quantitative genetics*, 4th edn. Harlow Essex, UK: Addison Wesley Limited, Edinburg Gate; 1996.
- Biegert A, Lupas AN. The HHpred interactive server for protein homology detection and structure prediction. *Nucleic Acids Res* 2005; 33:244–248. doi:10.1093/nar/gki408.
- Bovine HapMap Consortium, Gibbs RA, Taylor JF, et al. Genome-wide survey of SNP variation uncovers the genetic structure of cattle breeds. *Science* 2009; 324(5926):528–532. doi:10.1126/science.1167936.
- Marr E, Tardie M, Carty M, et al. Expression, purification, crystallization and structure of human adipocyte lipid-binding protein (aP2). *Acta Crystallogr Sect F Struct Biol Cryst Commun* 2006; 62(11):1058–1060. doi:10.1107/S1744309106038656.
- Iguchi K, Okumura N, Usui S, Sajiki H, Hirota K, Hirano K. Myristoleic acid, a cytotoxic component in the extract from *Serenoa repens*, induces apoptosis and necrosis in human prostatic LNCaP cells. *Prostate* 2001; 47(1):59–65. doi:10.1002/pros.1047.
- Simopoulos AP. The importance of the ratio of omega-6/omega-3 essential fatty acids. *Biomed Pharmacother* 2002; 56(8):365–379.