



Breeding beef cattle for an extended productive life: Evaluation of selection criteria in the Retinta breed



R. Morales^{a,*}, F. Phocas^b, M. Solé^c, S. Demyda-Peyrás^d, A. Menéndez-Buxadera^a, A. Molina^a

^a Department of Genetics, University of Córdoba, Edificio Gregor Mendel. Campus de Rabanales. Ctra. Madrid-Cádiz, km 396, 14071 Córdoba, Spain

^b GABI, INRA, AgroParisTech, Université Paris-Saclay, 78 350 Jouy-en-Josas, France

^c Unit of Animal Genomics, GIGA-R & Faculty of Veterinary Medicine, University of Liège – B34 (+1), Avenue de l'Hôpital 1, 4000 Liège, Belgium

^d IGEVET – Instituto de Genética Veterinaria "Ing. Fernando N. Dulout" (UNLP - CONICET LA PLATA), Facultad de Ciencias Veterinarias, Universidad Nacional de La Plata, Calle 60 y 118 s/n, 1900 La Plata, Argentina

ARTICLE INFO

Keywords:

Beef cattle
Functional longevity
Survival
Weibull

ABSTRACT

We characterized genetically the longevity and the productive life of beef cows considering three different traits: length of true life (LTL), the length of productive life (LPL) and a number of calvings (NC), in the Retinta breed. Data considered in the analysis were collected in 30 Spanish herds and consisted of 3187 cows born between 1993 and 2013; 1802 cows had complete information while 1385 cows had censored information. Pedigree information accounted for 7359 individuals and the genetic evaluation was performed under an animal model using the Weibull proportional hazard model for survival analysis. Results indicated that cow effects (age at first calving, herd, season-year of cow birth), as well as some calf effects (breed group, season-year of birth), were significant ($P < 0.05$) for all traits; however, sex of calves did not affect the traits. The low heritabilities obtained for LTL and LPL (0.14 ± 0.01 and 0.14 ± 0.01 respectively) and modest heritability for NC (0.30 ± 0.01), suggest that a higher response to selection can be expected for NC than for LTL and LPL.

1. Introduction

In general, beef breeding programs are focused on increasing live weight or short-term weight gain in order to produce more kilograms of meat per individual. However, it has hardly been studied how those criteria affect cow longevity. Cow longevity is an economically important trait directly related to the productive efficiency and meat yield in beef production systems (Van Melis et al., 2007). A shorter productive life of the cows forces to keep more heifers in the herd for replacement (Lopez de Maturana et al., 2007) and decreases the possibility of obtaining a higher number of calves during the cow productive life. As a result, the costly period from birth to first parity will be best amortized in cows with an increased longevity because the cost per weaned calf will decrease proportionally (Dákay et al., 2006). The inclusion of this trait in beef cattle breeding programs would allow selecting heifers with an increased chance of remaining in the herd for a longer period of time and, at the same time, farmers would be able to determine the age of culling depending on their breeding objectives (Caetano et al., 2013).

The cow longevity is a highly significant trait in Retinta, an autochthonous breed widely utilized in the Southwest of the Iberian peninsula. Nowadays, its census is slightly over 200,000 breeding cows,

which are reared under the extensive regime of the Dehesa ecosystem, characterized by marginal pastures and dry and hot climate (Serrano et al., 1992). Although pure breeding is largely preserved in Retinta breed, the breed is also widely used in crossbreeding as a maternal line with other continental breeds, such as Charolais and Limousin, yielding highly profitable crossbred individuals. To maximize the herd profit under the extensive and low-input production systems, cows should have a long productive life to produce a large number of calves. It would be also necessary to know the economic optimum age to cull cows. From simulation studies, maximum herd lives ranging from 8 to 11 years (Rogers, 1972; Melton, 1980).

It is generally assumed that the use of linear models in the genetic analysis of longevity traits is inadequate due to a violation of assumptions of normality (Lagakos, 1979). In the same way, random regression linear models, which are frequently used to analyze the length of productive life (LPL), cannot be fully considered since censored data and the non-linearity of the factors cannot be treated appropriately (Caraviello et al., 2004). Survival analysis is considered as the relevant statistical approach for the genetic evaluation of cow longevity (Olechnowicz et al., 2016). It has been widely performed in most livestock species, such as dairy cattle (Famula, 1981; Caraviello et al., 2004; Jenko et al., 2013), beef cattle (Rogers et al., 2004), pigs

* Corresponding author.

E-mail address: v22mocer@uco.es (R. Morales).

(Meszaros et al., 2010) and more recently in horses (Sole et al., 2017). Venot et al. (2013) carried out a study to incorporate productive life, through longevity and productive efficiency assessed by the number of calvings at a target age, in a new genetic evaluations of French beef cows. However, this analysis is still frequently overlooked in beef cattle breeding programs and despite their economic importance the number of applied studies performed to date is scarce (Rogers et al., 2004; Dákay et al., 2006; Szabó and Dákay, 2009). Similarly, there are few studies estimating genetic parameters for longevity traits in beef cattle (Tanida et al., 1988; Rogers et al., 2004; Dákay et al., 2006; Forabosco et al., 2006; Phocas and Ducrocq, 2006; Szabó and Dákay, 2009).

One of the reasons for this lack of information is the fact that a large number of animals is still alive during the genetic evaluation and therefore, only the lower bound of their eventual productive life is known (censored information). The exclusion of these records from the evaluation or their incorrect use as definitive values would lead to biased results (Raguž, 2014). This problem could be corrected using survival analysis (Ducrocq, 1997). This methodology combines the information on dead (uncensored) and alive (censored) individuals and enables a proper statistical treatment of censored records by accounting for nonlinear characteristics of longevity data (Vukasinovic, 1999).

The more accurate and widely used model in the genetic evaluations for LPL is the Weibull proportional hazard models (Sewalem et al., 2005; Mészáros et al., 2008; Bonetti et al., 2009; Strapáková et al., 2013). Due to a lack of exhaustive recording of reproduction records and cow presence inventory in beef cattle herds, the number of longevity studies of native breeds is very limited and integration of longevity as selection criteria into beef cattle breeding program is scarce.

Herein, we performed the genetic characterization of the productive life of Retinta breed cattle analyzing three different selection criteria as measures of longevity-related traits using a survival analysis based on the Weibull proportional hazard model.

2. Material and methods

We analyzed the reproductive data recorded in the selection nucleus of the Retinta breed. Data were collected between 1995 and 2016 by the National Retinta Breeders Association. A total of 31,639 calving records from 6212 cows belonging to 30 genetically linked herds were available. Genetic links were due to the use of artificial insemination sires that connected the 30 herds. Data were initially filtered following two standardization criteria: 1) only cows whose age at first calving ranged between 20 and 42 months were considered in the analysis, and 2) cows whose calving records fell outside the ± 3 SD range from the average calving interval were excluded. Cows with an incomplete reproductive history (age at the first birth unknown or some intermediate calving not controlled) were eliminated. After editing, 16,100 calving records from 3187 dams and 398 sires were considered in the analysis. Pedigree of the cows was extended to include all the available information in the stud book breed database (7359 animals). The cows were classified as presenting uncensored (dead) or censored (alive) records. Right-censored data (43.46%) included animals alive or with an unknown status at the time of analysis and less than 3 years since the last calving. Our dataset did not present left-truncated records because only cows born in or after 1993 with calvings started after 1994 (at the age of 2 or more years) were included. Beef cattle longevity was evaluated using three different productive traits: length of true life (LTL), estimated as the number of months between the birth of the cow and the birth of the last calf on record or censoring, LPL, estimated as the number of months between the birth of the first and the birth of the last calf on record or censoring (Meyer, 2009); and number of calving (NC), estimated as the number of calvings for each cow until its last calving or censoring time.

A preliminary analysis was performed using a Weibull hazard survival model to determine the significance of the effects included in the model using a likelihood random test, in which comparisons were

performed between the full model and the same model but excluding one effect at a time. The effects evaluated were the *age at first calving*, *herd*, *season-year of cow birth* as time-independent effects, and *age at calving*, *calf breed group*, *season-year of calving* and the *combination of sex and type of calving* (simple or twin births) as time-dependent effects. Time-dependent effects account for effect changes at every time point (i.e., in each calving), while time-independent effects remain equal in each calving. Calving difficulty was not tested in this study since Retinta is a maternal breed in which calving problems are negligible: less than 0.2% of calvings exhibited some difficulties (MAPAMA, 2016).

Factors potentially associated with cow longevity were analyzed with the following model:

$$h(t, x) = h_0(t) \exp\{\text{agefirst}_i + \text{herd}_j + \text{cow}^* \text{year}^* \text{season}_k + \text{breed group}_l + \text{year}^* \text{season}_m + \text{age}_n + g_o f\}$$

where $h_0(t)$ is the baseline hazard function, agefirst_i is the time-independent effect of the age at first calving (monthly intervals from 20 to 26.5; > 26.5 to 32.5; > 32.5 to 38.5; > 38.5); *Herd* is the time-independent effect of the herd (30 herds); $\text{cow}^* \text{year}^* \text{season}_k$ is the time-independent effect of the season combined with the year of cow birth (79 classes); breed group_l is the time-dependent effect of the calf breed group (1 = Retinta, 2 = Limousin x Retinta, 3 = Charolais x Retinta, 4 = cross with others breeds); $\text{year}^* \text{season}_m$ is the time-dependent effect of the season combined with the year of calf birth (83 classes); age_n is the time-independent effect of the age at calving (monthly intervals from 20 to 45; > 45 to 70; > 70 to 95; > 95 to 120; > 120 to 145; > 145 to 170; > 170 m.); g_o is the random animal additive genetic value.

Genetic parameters and expected breeding value (EBV) predictions were based on the Weibull proportional hazards method (Ducrocq et al., 1988). The three dependent variables (LTL, LPL, and NC) were examined with the same model described above. Such models are equivalent to a fully parametric model, in which the baseline is estimated at every discrete time point and the definition of hazard is modified to consider a discrete time scale (Ducrocq, 1999). A special case of proportional hazard models are the grouped data models, where failure times are grouped into intervals $A_i = [a_{i-1}, a_i]$, $i = 1, \dots, r$, with $a_0 = 0$, $a_r = +\infty$, and λ as the hazard function:

$$\lambda(t, z_i) = \lambda_0(t) \exp(z_i' \beta)$$

where $\lambda_0(t)$ is the baseline hazard function and z_i is the design vector for explanatory variables β for cow i . The last calving of the cow or censoring during the time interval A_i is denoted as t_i .

Rates of last calving risk were expressed via risk ratios, which denoted the relative risk of a cow in a certain class to end its productive life compared with cows belonging to a reference class with a risk ratio equal to 1.

The heritabilities (h^2) of the traits analyzed were estimated using the methodology described by Yazdi et al. (2002):

$$h^2 = \frac{\sigma_a^2}{\frac{1}{P} + \sigma_a^2}$$

where σ_a^2 = genetic variance and P = proportion of uncensored records.

The reliability R^2 of each estimated breeding value (EBV) was based on the prediction error variance for each estimate as $R^2 = 1 - \frac{pev}{\sigma_a^2}$

where pev is the prediction error variance calculated as the square of the standard error for each EBV.

All the analyses were carried out using the Survival Kit v6 software (Meszaros et al., 2013)

3. Results

Table 1 shows the distribution of censored and uncensored records in each trait studied (LTL, LPL and NC). Average censoring ages after first calving 87.62 were and 54.95 months for LTL and LPL respectively;

Table 1
Statistical data of the different traits related to survival (LTL, LPL and NC) analyzed in the Retinta breed.

	LTL	LPL	CN
Right-censored cows	1385	1385	1385
Minimum censoring time ^a	21	0	1
Maximum censoring time ^a	212	189	16
Average censoring time ^a	87.619	54.949	4.713
Uncensored cows	1802	1802	1802
Minimum failure time ^a	22	0	1
Maximum failure time ^a	238	208	16
Average failure time ^a	97.227	65.015	5.312

(LTL=length of true life; LPL=length of productive life; NC=number of calvings).

^a (months of life for LTL, months of life after first calving for LPL and calving number for CN).

an average number of calves produced per cow was 4.71 for NC. Average failure ages after first calving were 97.23 and 65.02 months for LTL and LPL, and 5.31 calvings for NC.

Likelihood ratio test results for each effect included in the model are presented in Table 2. Only the combination of sex and type of calving was not significant ($P > 0.05$) and therefore, excluded from the analysis. All other effects were highly significant ($P < 0.001$) except for age at first calving in LTL and NC. It is noteworthy that higher hazard ratios for the end of productive life were observed in cows which were older at first calving (Fig. 1-a). Moreover, the highest risk (1.51) was for cows whose first calving age was above 38 months, while the lowest risk (0.42) was for cows starting to calve at early ages (> 20 –26.5). The relative risks showed large differences among herds, which reflected the importance of this effect; these were from 0.16 to 2.78 for LTL, from 0.15 to 2.62 for LPL and from 0.19 to 2.31 for NC (Fig. 1-b). There was also a wide variation in the relative risks from one to another cow birth season-year, from 0.01 to 9.65 for LTL, from 0.01 to 14.41 for LPL and from 0.01 to 5.28 for CN (Fig. 1-c). The highest risk for age at calving was for > 170 months for the three traits and for LTL also for 20–45 months (Fig. 2-a). Regarding breed of calf, the Limousine-Retinta crossbreeding showed the highest risk of failure, and the Retinta pure breeding the lowest (Fig. 2-b). Relative risks based on season-year of calf birth ranged from 0.001 to 43.23 for LTL, from 0.001 to 365.83 for LPL and from 0.001 to 1.82 for CN (Fig. 2-c).

Heritability, EBV averages, and relative risk averages were estimated for all the traits studied (Table 3). The EBV reliability frequency distribution of the cows, for the three traits follows a normal distribution with a slight right bias for CN (Fig. 3). Correlations between EBV of all the pedigree animals of the three traits analyzed were very high, 0.99 for LTL and LPL, 0.97 for LTL and NC and 0.96 for LPL and NC. The standardized average cow EBV trend over time is shown in Fig. 4. The standardization of genetic values was carried out using the average

Table 2
Likelihood ratio last test statement for the different traits (LTL, LPL, and NC) in Retinta survival analysis.

	LTL			LPL			CN		
	CHI ²	Prob > CHI ²	R ² Maddala	CHI ²	Prob > CHI ²	R ² Maddala	CHI ²	Prob > CHI ²	R ² Maddala
Age at first calving	3.101	0.376	0.64	147.97	< 0.001	0.662	3.122	0.373	0.325
Herd	263.17	< 0.001	0.610	242.2	< 0.001	0.652	235.2	< 0.001	0.279
Season-year of cow birth	183.81	< 0.001	0.619	236.64	< 0.001	0.652	139.8	< 0.001	0.295
Calving age	847.69	< 0.001	0.531	756.35	< 0.001	0.591	83.4	< 0.001	0.308
Calf breed	10.665	0.014	0.639	12.168	0.007	0.676	20.59	< 0.001	0.321
Season-year of calf birth	257.82	< 0.001	0.61	295.78	< 0.001	0.646	179.5	< 0.001	0.286
Time unit	1496.7	< 0.001	0.425	2262.4	< 0.001	0.343	29.54	0.021	0.319

(LTL=length of true life; LPL=length of productive life; NC=number of calvings).

genetic value of the year 1994 (beginning of the breeding program) and dividing by the standard deviation of the global VGs. The result was multiplied by a coefficient so that the limits of this standardized VG oscillated between 80 and 120 with an average of 100. A positive genetic trend was found over the 20 years of the study.

Table 4 showed positive but moderate correlations between EBV of the current growth selection (weight at 120 and 180 days) and EBV for the three longevity traits (LTL, LPL and NC) in Retinta breed.

4. Discussion

The lifespan of livestock females is divided into two well-differentiated parts: (i) the period from birth to first parity, in which their economic return is zero, and (ii) the productive period, from their first calving to their disposal. This second period, in which the individual effectively produces and generates an economic income, is commonly called longevity (Essl, 1998). In dairy cattle, LPL has been defined as the number of days from first calving to death or culling, having a substantial impact on the net returns of dairy production (Reinhardt, 1996). Ducrocq (1994) defined two types of LPL: true LPL is the ability of a cow to avoid culling no matter the reasons, being estimated as the period of elapsed time between first calving and disposal of the cow; functional LPL is the ability of a cow to avoid involuntary culling and corresponds to LPL corrected for the level of production. True LPL is strongly related to the production performance of the cow. On the contrary, functional LPL is more related to the ability of the cow to avoid non-productive causes of culling, such as infertility, mastitis, lameness or any other disease.

In the present study, we analyzed three different traits to determine their adjustment as longevity selection criteria to be included in a breeding program.

The accuracy of genetic evaluation by survival analysis is highly influenced by the ratio of censored and uncensored records available, being increased as the proportion of censored records decreases. In our case, 43% of the data employed was censored, fitting into the limits proposed by Vukasinovic et al. (1997), who recommended not much more than 40% of censored records to obtain accurate results. Estimations of genetic variance in survival models have been usually based on sire or sire-maternal grand sire models (Tarres et al., 2006). In our case, we adopted an animal model despite it was believed it could not fit with the Survival Kit because of this alleged poor performance of the Laplace approximation (Ducrocq, 2006). However, with an appropriate data structure, it has been shown that this concern was not justified (Ducrocq, 2006). In this sense, Meszaros et al. (2010) suggested that the use of these models would produce a lower estimation of the genetic variance and heritability. However, the same authors also suggested that the results obtained would be more accurate due to a better correction of environmental effects and be less contaminated by other genetic effects.

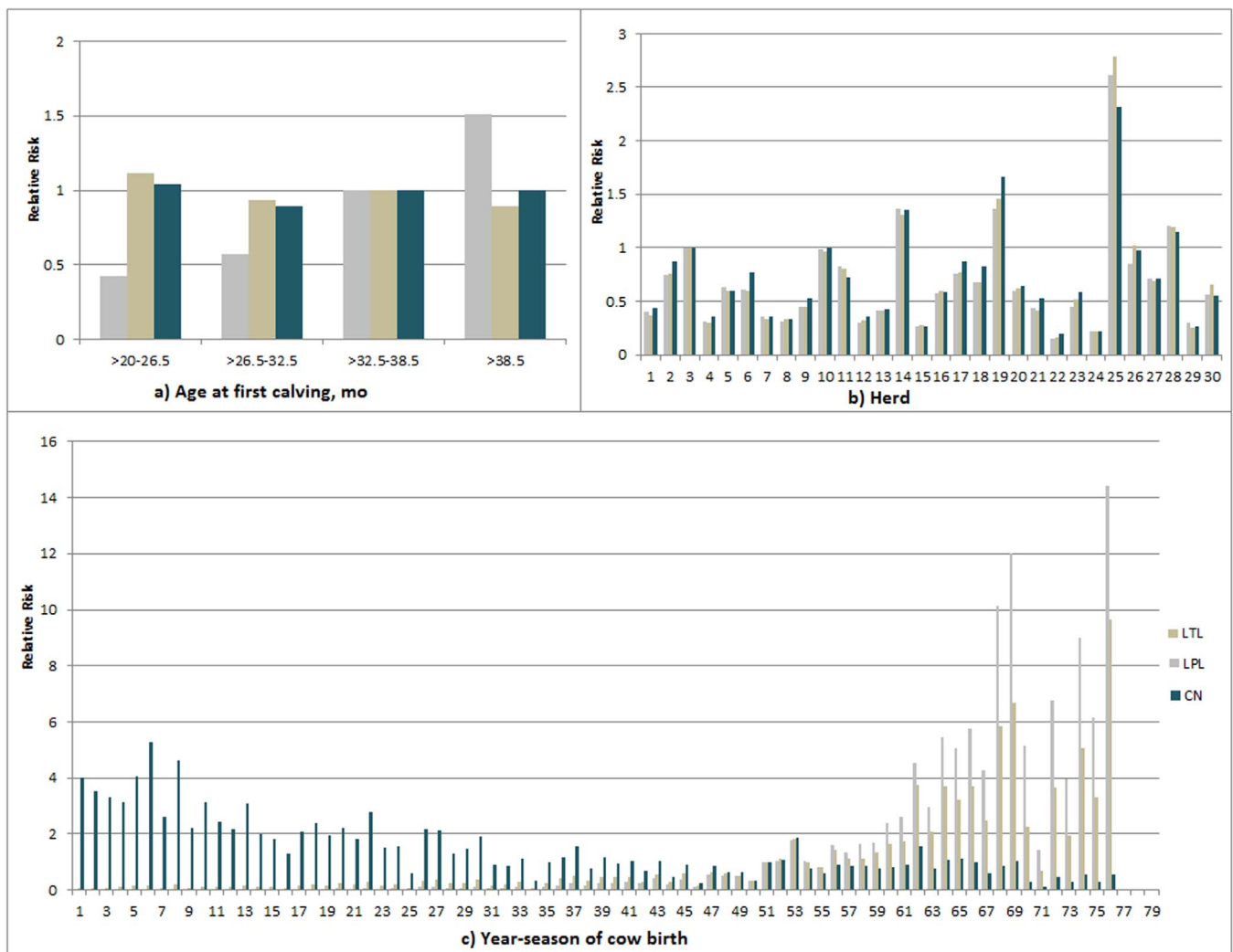


Fig. 1. Time-independent effects expressed as hazard ratios for the different traits (LTL, LPL and NC) in Retinta survival analysis. (LTL=length of true life; LPL=length of productive life; NC=number of calvings). (The units for the axis in figure a) are months, b) axis showed the different herd and c) axis are the different classes of combination of season-year of cow birth effect).

According to our results, longevity traits were heavily influenced by several factors associated with the productive cycle. Among them, the age of first calving showed that cows delivering for the first time at older ages (> 38 months) had higher hazard ratios of ending their productive life at early stages of their LPL. This observation agrees with Rogers et al. (2004), who demonstrated that beef cows younger than 24 months at first calving had fewer chances of being culled than cows delivering at older ages. Phocas and Ducrocq (2006) reported that Charolais cows having their first calving below 28 months of age had 10% less risk to be culled than heifers calving between 28 and 39 months. Conversely, Ducrocq (1994) and Vukasinovic et al. (2001), among others, suggested that the percentage of variation in longevity explained by the age at first calving for dairy cows was minimal, and therefore, removed this effect from the analysis. In our case, the age at first calving was non-significant for LTL and CN, however, it was significant for LPL. Therefore, the results obtained in this study should be taken into account in the modeling of these traits for including them in future breeding programs.

In our study, culling risk was highly influenced by the herd, the year-season of cow birth, and the year-season of calf birth. However, our data do not allow us to disaggregate the causes of the variability observed. In any case, there are large differences among herds that

should be included in breeding programs. Additionally, a more detailed analysis, including nutritional and health-related factors, should be performed to determine the origin of these differences in order to adjust the management practices employed to improve the longevity of the cows.

Retinta cows were widely used as a maternal line in two-breed crosses with Charolais and Limousin bulls by farmers due to the high yield observed in the offspring. In this system, the average weaning weight (determined at 180 days) was 199.8 kg for pure Retinta, 206.4 kg for LimousinxRetinta (LR), 209.6 kg for CharolaisxRetinta (CR) crosses, and 185.1 kg in Retinta crosses with other breeds. However, LR and CR crosses increased the risk of premature culling by 32.1% and 15.9%, respectively. These results suggest that despite their decreased weaning weight, the breeding of pure Retinta individuals could increase the whole productivity of the system since the total number of calvings was increased. Similar results were previously observed by Venot et al. (2013), who found differences among the productive life among French beef cattle breeds. However, to our knowledge, this is the first study that compares pure and crossbred individuals that have the same maternal breed.

Previous studies determined that heritability of longevity traits in beef cattle ranged between 0.04 and 0.21 (Sewalem et al., 2005; Phocas

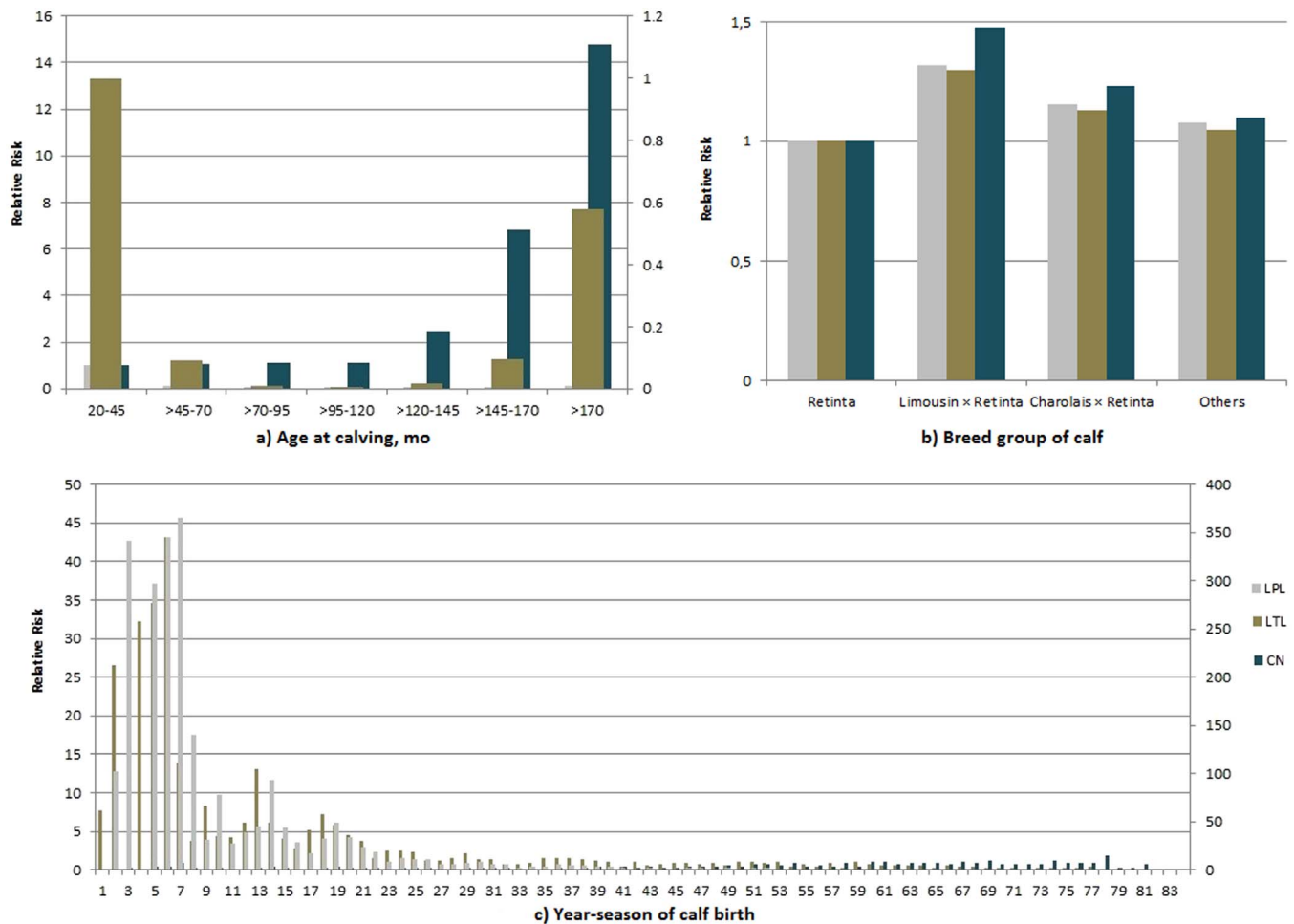


Fig. 2. Time-dependent effects expressed as hazards ratios for the different traits (LTL, LPL and NC) in Retinta survival analysis. (LTL=length of true life; LPL=length of productive life; NC=number of calvings). (The units for the axis in figure a) are months, b) axis showed the different herds and c) axis are the different classes of combination of season-year of calf birth effect).

and Ducrocq, 2006; Mészáros et al., 2008; Bonetti et al., 2009; Strapáková et al., 2013). In our case, heritability estimates were low for LTL and LPL (0.14). These results suggest that the genetic improvement of these traits will be difficult. This hypothesis was also suggested by Rogers et al. (2004) in crossbred cows and by Snelling et al. (1995) in Angus cattle, supporting our findings. Another interesting point is that EBV correlations among the three traits were higher than 0.96, showing that the traits are biologically similar. However, the h^2 determined in NC was moderate (0.30) and, therefore, this trait could be used as a

selection criterion to obtain a faster genetic improvement of longevity. In addition, the trend of NC over cow age (relative productivity) could allow a close monitoring of the development of each individual throughout the productive life.

Finally, we also found a positive genetic trend in the traits analyzed over the last twenty years (Fig. 4). Cows born in recent years had a higher probability of achieving a longer life and, as a consequence, a higher probability of getting an increased number of calvings. This improvement can be due to the current selection for weaning weight

Table 3

Estimates of parameters from Weibull analyses for the different traits LTL, LPL and NC in Retinta survival analysis.

	LTL	LPL	CN
Proportion uncensored/total	0.565	0.565	0.565
Estimated additive variance ± s.e.	0.292 ± 0.01	0.292 ± 0.01	0.292 ± 0.01
h^2	0.142	0.142	0.302
Reliability average	0.710	0.710	0.733
Reliability average uncensored cows	0.669	0.668	0.694
Reliability average censored cows	0.765	0.767	0.783
EBV average	0.113 ± 0.79	0.113 ± 0.79	0.125 ± 0.75
EBV average uncensored cows	0.167 ± 0.77	0.159 ± 0.77	0.120 ± 0.73
EBV average censored cows	-0.476 ± 0.82	-0.467 ± 0.83	-0.443 ± 0.78
Risk average	1.078	1.079	1.029
Risk average uncensored cows	1.370	1.362	1.276
Risk average censored cows	0.698	0.710	0.708

(LTL=length of true life; LPL=length of productive life; NC=number of calvings).

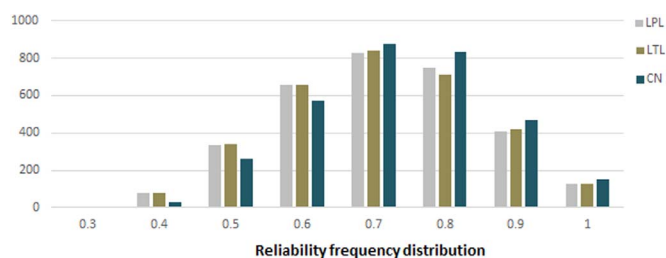


Fig. 3. Frequency distribution of reliability for the different traits (LTL, LPL, and CN) in Retinta survival analysis. (LTL=length of true life; LPL=length of productive life; NC=number of calvings).

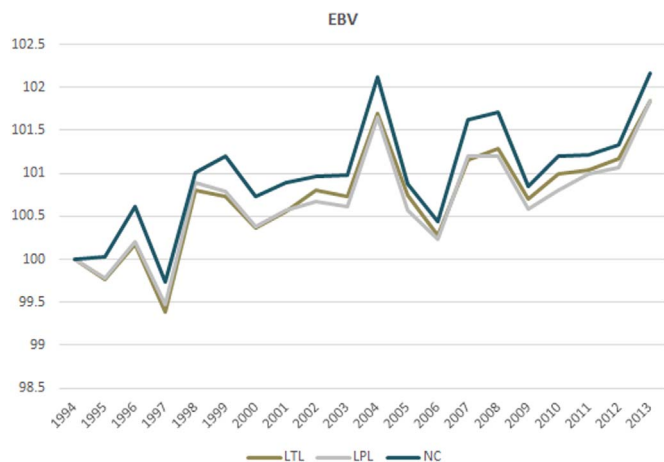


Fig. 4. Standardized average cow EBV trend over time for the different traits (LTL, LPL, and NC) in Retinta survival analysis. A scale change has been made so that the year 1994 average takes the value of 100. (LTL=length of true life; LPL=length of productive life; NC=number of calvings).

Table 4
Correlation for genetic direct and maternal values on live weight at 120 and 180 days of the cows in Retinta cattle and EBV for the different longevity traits in Retinta survival analysis.

	LTL	LPL	CN
P180D	0.165	0.182	0.247
P180M	0.145	0.159	0.155
P120M	0.144	0.153	0.217
P120M	0.078	0.079	0.068

(LTL=length of true life; LPL=length of productive life; NC=number of calvings; P180D and P180M= direct and maternal values on live weight at 180 days of the cows respectively; P120D and P120M= direct and maternal values on live weight at 180 days of the cows respectively).

due to the existence of moderate positive correlations between weaning weight and longevity traits (Table 4). However, Martinez et al. (2004) found that selection for weights at weaning and yearling ages had a little genetic effect on any measure of lifetime production in Hereford cows.

One possible way to increase the reliability of breeding values is to combine longevity with other positively correlated traits measured early in life, such as conformation traits. So far, little is known about the relationship between longevity and conformation traits in beef cattle. Forabosco et al. (2004) found that muscularity could be used as an early predictor of longevity in Chianina breed. Van Melis et al. (2010) found that heifer pregnancy rate can be used as an early predictor of longevity as well as post-weaning weight and muscle score in the Nellore breed.

5. Conclusion

According to the results obtained herein, age at first calving, herd, and season-year of cow birth, as well as calf breed and year-season of birth were important factors affecting longevity in Retinta beef cattle. Producers can increase productive life by modifying these parameters. Since differences among herds are very large, it is important to take care of the reproductive, sanitary and feeding management and to choose the more appropriate breed for crossbreeding purposes.

The high heritability for NC indicates that the number of calvings is the more relevant selection criterion for a beneficial response to direct genetic selection for longevity. The high correlations among the breeding values of the three traits indicate that the same kind of biological improvement would occur by selecting for one or another. Nevertheless, we would recommend NC because of its higher heritability and reliability, and because the collection of data on the number of calvings is easier and more accurate.

Acknowledgments

The work was conducted at the Institut National de la Recherche Agronomique, Unité GABI, Jouy-en-Josas, France. We would like to thank the National Retinta Breeders Association, the CEAG (Experimental Agriculture and Livestock Centre of Jerez de la Frontera, Rural Council of Cadiz) and the CENSYRA (Livestock Selection and Breeding of Junta de Extremadura) for the contribution of data and financial support. Thanks are also due to V. Ducrocq for helping with the Survival Kit software and to A. Di Maggio for manuscript edition.

This research did not receive any specific grant from funding agencies in the public, commercial, or not-for-profit sectors.

References

Bonetti, O., Rossoni, A., Nicoletti, C., 2009. Genetic parameters estimation and genetic evaluation for longevity in Italian Brown Swiss bulls. *Ital. J. Anim. Sci.* 8, 30–32.

Caetano, S.L., Rosa, G.J.M., Savegnago, R.P., Ramos, S.B., Bezerra, L.A.F., Lôbo, R.B., De Paz, C.C.P., Munari, D.P., 2013. Characterization of the variable cow's age at last calving as a measurement of longevity by using the Kaplan-Meier estimator and the Cox model. *Animal* 7, 540–546.

Caraviello, D.Z., Weigel, K.A., Gianola, D., 2004. Prediction of longevity breeding values for US Holstein sires using survival analysis methodology. *J. Dairy Sci.* 87, 3518–3525.

Dákay, I., Márton, D., Bene, S., Kiss, B., Zsuppán, Z., Szabó, F., 2006. The age at first calving and the longevity of beef cows in Hungary. *Arch. fur Tierz.* 49, 417–425.

Ducrocq, V., 1994. Statistical analysis of length of productive life for dairy cows of the Normande breed. *J. Dairy Sci.* 77, 855–866.

Ducrocq, V., 1997. Survival analysis, a statistical tool for longevity data. In: *Proceedings of the 48th Annual Meeting of the European Association for Animal Production*, 25–28 August 1997, Vienna, Austria.

Ducrocq, V., 1999. Extension of survival analysis to discrete measures of longevity. *Int. Bull.* 21, 41–47.

Ducrocq, V., 2006. Current status and prospects of survival analysis in animal breeding. In: *Proceedings of the 8th World Congress on Genetics Applied to Livestock Production August 13–18 2006*.

Ducrocq, V., Quaas, R.L., Pollak, E.J., Casella, G., 1988. Length of productive life of dairy cows. 1. Justification of a weibull model. *J. Dairy Sci.* 71, 3061–3070.

Essl, A., 1998. Longevity in dairy cattle breeding: a review. *Livest. Prod. Sci.* 57, 79–89.

Famula, 1981. Exponential stayability model with censoring and covariates. *J. Dairy Sci.* 64, 538–545.

Forabosco, F., Bozzi, R., Filippini, F., Boettcher, P., Van Arendonk, J.A.M., Bijma, P., 2006. Linear model vs. survival analysis for genetic evaluation of sires for longevity in Chianina beef cattle. *Livest. Sci.* 101, 191–198.

Forabosco, F., Groen, A.F., Bozzi, R., Van Arendonk, J.A.M., Filippini, F., Boettcher, P., Bijma, P., 2004. Phenotypic relationships between longevity, type traits, and production in Chianina beef cattle. *J. Anim. Sci.* 82, 1572–1580.

Jenko, J., Ducrocq, V., Kovač, M., 2013. Comparison of piecewise Weibull baseline survival models for estimation of true and functional longevity in Brown cattle raised in small herds. *Animal* 7, 1583–1591.

Lagakos, S.W., 1979. General right censoring and its impact on the analysis of survival data. *Biometrics* 35, 139–156.

Lopez de Maturana, E., Ugarte, E., Gonzalez-Recio, O., 2007. Impact of calving ease on functional longevity and herd amortization costs in Basque Holsteins using survival analysis. *J. Dairy Sci.* 90, 4451–4457.

MAPAMA, 2016. Catálogo de razas autóctonas de fomento. <http://www.mapama.gob.es/es/ganaderia/temas/zootecnia/razas-ganaderas/razas/catalogo/autoctona->

- fomento/bovino/retinta/usos_sistema.aspx>.
- Martinez, G.E., Koch, R.M., Cundiff, L.V., Gregory, K.E., Van Vleck, L.D., 2004. Genetic parameters for six measures of length of productive life and three measures of lifetime production by 6 yr after first calving for Hereford cows1. *J. Anim. Sci.* 82, 1912–1918.
- Melton, B., 1980. Economics of beef cow culling and replacement decisions under genetic progress. *West. J. Agric. Econ.* 5, 137–148.
- Meszaros, G., Palos, J., Ducrocq, V., Solkner, J., 2010. Heritability of longevity in Large White and Landrace sows using continuous time and grouped data models. *Genet. Sel. Evol.* 42, 13.
- Meszaros, G., Solkner, J., Ducrocq, V., 2013. The Survival Kit: software to analyze survival data including possibly correlated random effects. *Comput. Methods Prog. Biomed.* 110, 503–510.
- Mészáros, G., Wolf, J., Kadlečík, O., 2008. Factors affecting the functional length of productive life in Slovak Pinzgau cows. *Czech J. Anim. Sci.* 53, 91–97.
- Meyer, K., 2009. Survival analysis for length of productive life of beef cows. AAABG Association for the Advancement of Animal Breeding and Genetics 18th Conference.
- Olechnowicz, J., Kneblewski, P., Jaśkowski, J.M., Włodarek, J., 2016. Effect of selected factors on longevity in cattle: a review. *J. Anim. Plant Sci.* 26, 1533–1541.
- Phocas, F., Ducrocq, V., 2006. Discrete vs continuous time survival analysis of productive life of Charolais cows. *Inst. Prociência, Minas Gerais* 03–13.
- Raguž, N., 2014. Linear vs. piecewise Weibull model for genetic evaluation of sires for longevity in Simmental cattle. *Mjekarstvo* 64, 141–149.
- Reinhardt, F., Pasman, E., 1996. Genetic evaluation for length of productive life in dairy cattle using survival analysis. *Int. Bull. journal.interbull.org*.
- Rogers, L.F., 1972. Economics of replacement rates in commercial beef herds1. *J. Anim. Sci.* 34, 921–925.
- Rogers, P.L., Gaskins, C.T., Johnson, K.A., MacNeil, M.D., 2004. Evaluating longevity of composite beef females using survival analysis techniques. *J. Anim. Sci.* 82, 860.
- Serrano, M.I., Mayer, M., Rodero, A., Jiménez, J., García, L.J., 1992. Genetic parameters of growth traits in 'Retinto' beef cattle. In: *Proceedings of the 43rd Annual Meeting of the EAAP, Madrid (Spain)*. II, pp. 130–131.
- Sewaleem, A., Kistemaker, G.J., Van Doormaal, B.J., 2005. Relationship between type traits and longevity in Canadian Jerseys and Ayrshires using a Weibull proportional hazards model. *J. Dairy Sci.* 88, 1552–1560.
- Snelling, W.M., Golden, B.L., Bourdon, R.M., 1995. Within-herd genetic analyses of stayability of beef females. *J. Anim. Sci.* 73, 993–1001.
- Sole, M., Valera, M., Gomez, M.D., Solkner, J., Molina, A., Meszaros, G., 2017. Heritability and factors associated with number of harness race starts in the Spanish Trotter horse population. *Equine Vet. J.* 49, 288–293.
- Strapáková, E., Candrak, J., Strapák, P., Trakovická, A., 2013. Genetic evaluation of the functional productive life in Slovak Simmental cattle. *Arch. fur Tierz.* 56, 797–807.
- Szabó, F., Dákay, I., 2009. Estimation of some productive and reproductive effects on longevity of beef cows using survival analysis. *Livest. Sci.* 122, 271–275.
- Tanida, H., Hohenboken, W.D., DeNise, S.K., 1988. Genetic aspects of longevity in angus and hereford cows1. *J. Anim. Sci.* 66, 640–647.
- Tarres, J., Bidanel, J.P., Hofer, A., Ducrocq, V., 2006. Analysis of longevity and exterior traits on Large White sows in Switzerland. *J. Anim. Sci.* 84, 2914–2924.
- Van Melis, M.H., Eler, J.P., Oliveira, H.N., Rosa, G.J., Silva 2nd, J.A., Ferraz, J.B., Pereira, E., 2007. Study of stayability in Nellore cows using a threshold model. *J. Anim. Sci.* 85, 1780–1786.
- Van Melis, M.H., Oliveira, H.N., Eler, J.P., Ferraz, J.B.S., Casellas, J., Varona, L., 2010. Additive genetic relationship of longevity with fertility and production traits in Nellore cattle based on bivariate models. *Genet. Mol. Res.* 9 (1), 176–187.
- Venot, E., Schneider, M.-D.-P., Miller, S.A., M, Barbat, M., Ducrocq, V., Phocas, F., 2013. New french genetic evaluations of fertility and productive life of beef cows. *Bulletin - International Bull Evaluation Service* 47, Presented at Congress Interbull, Nantes, FRA (2013–2008–2023 - 2013–2008–2025). <<http://prodinra.inra.fr/record/253561>>.
- Vukasinovic, N., 1999. Application of survival analysis in breeding for longevity. In: *Proceedings of the 4th International Workshop on Genetic Improvement on functional traits in cattle, Jouy-en-Josas, France*. Interbull Bulletin, N. 21, pp. 3–10.
- Vukasinovic, N., Moll, J., Casanova, L., 2001. Implementation of a routine genetic evaluation for longevity based on survival analysis techniques in dairy cattle populations in Switzerland. *J. Dairy Sci.* 84, 2073–2080.
- Vukasinovic, N., Moll, J., Kunzi, N., 1997. Analysis of productive life in Swiss brown cattle. *J. Dairy Sci.* 80, 2572–2579.
- Yazdi, M.H., Visscher, P.M., Ducrocq, V., Thompson, R., 2002. Heritability, reliability of genetic evaluations and response to selection in proportional hazard models. *J. Dairy Sci.* 85, 1563–1577.