

2016

Isonymic Relations in the Bolivia-Argentina Border Region

José Edgardo Dipierri

School of Humanities and Social Sciences. National University of Jujuy, San Salvador de Jujuy, Argentina, jedjujuy@gmail.com

Emma Laura Alfaro Gomez

Institute of High Altitude Biology; National University of Jujuy, San Salvador de Jujuy, Argentina, emma.alfarogomez@gmail.com

Alvaro Rodríguez-Larralde

Venezuelan Institute for Scientific Research, Caracas, Venezuela, alvarodla@hotmail.com

Virginia Ramallo

Patagonian Institute of Social and Human Sciences (CCT CENPAT-CONICET), Puerto Madryn, Argentina, ramallo@cenpat-conicet.gob.ar

Follow this and additional works at: <http://digitalcommons.wayne.edu/humbiol>

Recommended Citation

Dipierri, José Edgardo; Alfaro Gomez, Emma Laura; Rodríguez-Larralde, Alvaro; and Ramallo, Virginia (2016) "Isonymic Relations in the Bolivia-Argentina Border Region," *Human Biology*: Vol. 88: Iss. 3, Article 1.

Available at: <http://digitalcommons.wayne.edu/humbiol/vol88/iss3/1>

Isonymic Relations in the Bolivia-Argentina Border Region

Abstract

When migrating, people carry their cultural and genetic history, changing both the transmitting and the receiving populations. This phenomenon changes the structure of the population of a country. The question is how to analyze the impact on the border region. A demographic and geopolitical analysis of borders requires an interdisciplinary approach. An isonymic analysis can be a useful tool. Surnames are part of cultural history, sociocultural features transmitted from ancestors to their descendants through a vertical mechanism similar to that of genetic inheritance. The analysis of surname distribution can give quantitative information about the genetic structure of populations. The isonymic relations between border communities in southern Bolivia and northern Argentina were analyzed from electoral registers for 89 sections included in four major administrative divisions, two from each country, that include the international frontier. The Euclidean and geographic distance matrices were estimated for all possible pairwise comparisons between sections. The average isonymic distance was lower between Argentine than between Bolivian populations. Argentine sections formed three clusters, of which only one included a Bolivian section. The remaining clusters were exclusively formed by sections from Bolivia. The isonymic distance was greater along the border. Regardless of the intense human mobility in the past as in the present, and the presence of three major transborder conurbations, the Bolivian-Argentine international boundary functions as a geographical and administrative barrier that differentially affects the distribution and frequency of surnames. The observed pattern could possibly be a continuity of pre-Columbian regional organization.

Keywords

surnames, isonymic analysis, transborder conurbations

Cover Page Footnote

The authors would like to thank the electoral authorities of Argentina and Bolivia, for the access to surnames database.

Isonymic Relations in the Bolivia-Argentina Border Region

José Edgardo Dipierri,¹ Emma Laura Alfaro Gomez,²
Alvaro Rodríguez-Laralde,³ and Virginia Ramallo^{4*}

ABSTRACT

When migrating, people carry their cultural and genetic history, changing both the transmitting and the receiving populations. This phenomenon changes the structure of the population of a country. The question is how to analyze the impact on the border region. A demographic and geopolitical analysis of borders requires an interdisciplinary approach. An isonymic analysis can be a useful tool. Surnames are part of cultural history, sociocultural features transmitted from ancestors to their descendants through a vertical mechanism similar to that of genetic inheritance. The analysis of surname distribution can give quantitative information about the genetic structure of populations. The isonymic relations between border communities in southern Bolivia and northern Argentina were analyzed from electoral registers for 89 sections included in four major administrative divisions, two from each country, that include the international frontier. The Euclidean and geographic distance matrices were estimated for all possible pairwise comparisons between sections. The average isonymic distance was lower between Argentine than between Bolivian populations. Argentine sections formed three clusters, of which only one included a Bolivian section. The remaining clusters were exclusively formed by sections from Bolivia. The isonymic distance was greater along the border. Regardless of the intense human mobility in the past as in the present, and the presence of three major transborder conurbations, the Bolivian-Argentine international boundary functions as a geographical and administrative barrier that differentially affects the distribution and frequency of surnames. The observed pattern could possibly be a continuity of pre-Columbian regional organization.

For many human activities (e.g., finances, tourism, communication, and the arts) physical boundaries have practically disappeared, but international borders persist for migrants. A border or frontier, understood as a complex geopolitical entity, exceeds the simple idea of a natural or geographic boundary (Bailly 2013; Wilson and Hastings 2012)—it is a valid and necessary concept for understanding cultures and identities as a whole. Migrants can cut across an

international border, with important effects on the population structures on both sides of the administrative boundary.

Argentina and Bolivia share an international border 773 km long (Figure 1), which was first drawn up in 1889 and rectified in 1925. The geographic region of the present frontier was an ethnic and cultural point of contact in the precolonial period, displaying significant migration movements that intensified during the colonial period. According to

¹School of Humanities and Social Sciences, National University of Jujuy, San Salvador de Jujuy, Argentina.

²Institute of High Altitude Biology, National University of Jujuy, San Salvador de Jujuy, Argentina.

³Venezuelan Institute for Scientific Research, Caracas, Venezuela.

⁴Patagonian Institute of Social and Human Sciences (CCT CENPAT-CONICET), Puerto Madryn, Argentina.

*Correspondence to: Virginia Ramallo, Boulevard Almirante Brown 2915, Puerto Madryn (U9120ACD), Chubut, Argentina. E-mail: ramallo@cenpat-conicet.gob.ar.

KEY WORDS: SURNAMES, ISONYMIC ANALYSIS, TRANSBORDER CONURBATIONS.

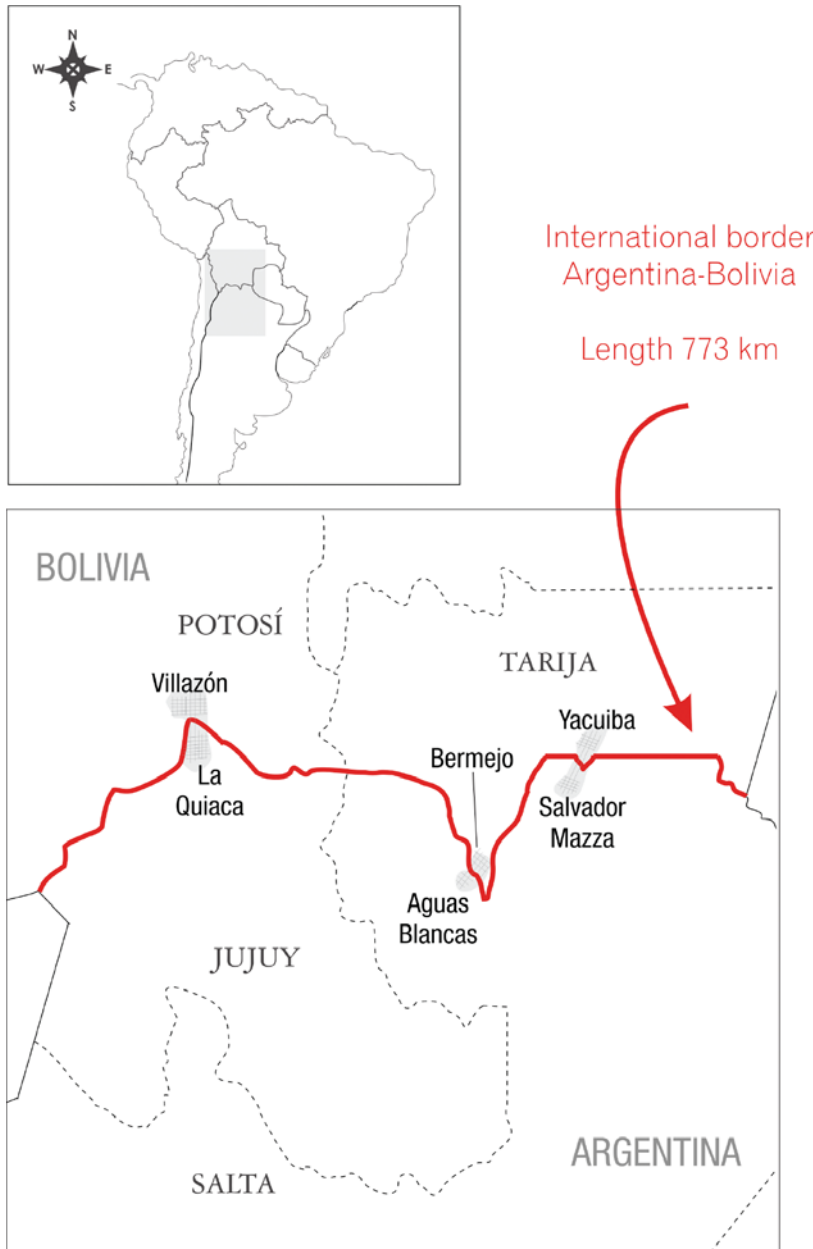


FIGURE 1. International border between Bolivia and Argentina, showing the major divisions in departments (Tarija and Potosí, Bolivia) and provinces (Jujuy and Salta, Argentina). Three transfrontier conurbations are also shown.

archaeological evidence and ethnohistorical documents, this region was inhabited in pre-Columbian times by a mosaic of ethnicities. The presence of Chichas in southern Bolivia, Aymara and Uru in the territory of Lipez in the southwest corner of Bolivia, and Atacama in the west and south of the Argentine Puna region has been documented. The Incas entered this area in 1480, changing cultures previously settled there (Celton and Carbonetti 2007; Albeck and Ruiz 2003). During the colonial

period, this territory was part of the Viceroyalty of Peru from 1542 and later of the Viceroyalty of the Río de la Plata from 1777. This means that for much of the colonial period the land where the frontier between these countries is currently established belonged to the same territory, without administrative divisions (Celton and Carbonetti 2007). This phenomenon was modified by the demarcation of international borders during the formation of the states.

Three areas in the Argentine-Bolivian frontier can be clearly geographically defined from west to east. The first sector is the high plateau of the Puna ecoregion, located more than 3,000 m above sea level, where the frontier is demarcated between Zapaleri (*trifinio* or tripoint for Bolivia, Argentina, and Chile; 5,619 m) and the Sierra de Santa Victoria (5,000 m). The second sector corresponds to the Andean forest ecoregion, or Yungas, where the international border is defined between the mountains of Santa Victoria and the Upper Seco River, crossing a stretch of the Bermejo River and Grande Tarija River. The last sector runs through the Sub-Andean Sierras and is limited by the Pilcomayo River (Benedetti and Salizzi 2011). Each area is in itself a real geographical barrier that influences human migration, due to fluvial (covering 320 km of frontier) or altitudinal limitations. These geographical features possibly explain why only three Argentine-Bolivian conurbations developed, one in each sector: La Quiaca–Villazón (identified as ID 65 and ID 23, respectively, in Table 1 and Figure 3) in the Puna sector, Aguas Blancas–Bermejo (IDs 73 and 41) in the Yungas sector, and Salvador Mazza–Yacuiba (IDs 74 and 46) in the Sub-Andean Sierras.

Migrating people carry with them their cultural and genetic history, changing the genetic structure of both transmitting and recipient populations. The analysis of surname distributions can supply quantitative information on the genetic structure of human populations, which can be defined by the deviations from random mating, or panmixia, such as those due to a limited number of ancestors, preference or rejection of certain types of inbreeding, and limited migration in the social or geographic space (Barrai et al. 2002). Deviations from panmixia can be evaluated through the inbreeding coefficient F (Wright 1951); a crude estimate of F is provided by the concept of isonymy, as defined by Crow and Mange (1965).

Surname acquisition in our study area dates from the beginning of the Spanish conquest, under the influence of the evangelizers. As a result, names and surnames became Spanish and generally had a spiritual or religious connotation. Changes were more sudden in the urban areas, reaching rural zones later. By 1786, after a long process of acculturation, only one-third of the inhabitants of Andean colonial cities were registered under aboriginal surnames (Sanchez-Albornoz 1974; Dipierri et al. 1991).

Surnames have been successfully used to investigate human populations (Sella et al. 2010), and the isonymic method has been used to assess the genetic structure of cities (Bronberg et al. 2009; Zagonel et al. 2013), regions (Barrai et al. 1987; Dipierri et al. 2005b, 2007; Herrera-Paz 2013), and countries (Barrai et al. 2001; Manni and Barrai 2001; Cheshire et al. 2010; Liu et al. 2012), including Argentina (Dipierri et al. 2005a, 2007) and Bolivia (Rodríguez-Laralde et al. 2011), as well as continents as a whole (Scapoli et al. 2007; Cheshire et al. 2011). However, analyses of surname distributions at an international frontier or border are scarce (Christensen 1999; Román-Busto et al. 2013; Boldsen and Lasker 1996). Therefore, we aimed to help fill this gap by analyzing the isonymic relationships between southern Bolivian and northern Argentine populations located on the international border between both countries.

Materials and Methods

Database and Surname Distribution

In Bolivia and Argentina, voting is mandatory for all citizens 18 or more years of age. Voting registers are an excellent source of information in population studies, as large numbers of surnames are included at different levels of aggregation (electoral sector, municipality, state, etc.). In this study, the minor administrative divisions of Bolivia (municipalities) and Argentina (departments) were considered equivalent and were designated as “sections” (89 total; identified in Table 1). All sections were included in four major administrative divisions, two from each country (Potosí and Tarija from Bolivia, Jujuy and Salta from Argentina), which cover the international frontier (Figure 1).

For surname data, we used the Civil Registry

from the National Electoral Court of Bolivia (updated to 2006) and the Argentine Electoral Roll (2001), containing 12.1 million and 12.6 million voters, respectively. Permission to work with these documents was obtained from the corresponding national authorities (for details, see Rodríguez-Laralde et al. 2011; Dipierri et al. 2005a). Surnames of men and women were jointly analyzed according to each country's political division. For Bolivia, the surnames of 1,767,938 voters from 39 sections in Potosí and 911,207 from 11 sections in Tarija were studied. For Argentina, the surnames of 302,395 voters from 16 sections in Jujuy and 621,089 from 23 sections in Salta were included.

Estimation of Surname Diversity within Sections

Fisher's alpha (α) was used to estimate population diversity within sections. High alpha values indicate an abundance of surnames and migration and little inbreeding, while low alpha values suggest high levels of inbreeding and drift. Fisher's alpha was estimated as $\alpha = 1/I_{ii}$, where I_{ii} is random isonymy within section i and is given by $I_{ii} = \Sigma (p_{ij})^2$, where p_{ij} is the frequency of surname j in section i (Rodríguez-Laralde et al. 2003).

Calculation of Isonymic Distances between Sections

Based on surname distribution, the matrices of isonymic distances between the 89 sections, taken two at a time, were calculated. The Euclidean distance (Cavalli-Sforza and Edwards 1967) between two groups/sections (i and j) was estimated as $E = (1 - \cos \theta)^{1/2}$, where $\cos \theta = \Sigma_k (p_{ik}p_{jk})^{1/2}$ and p_{ik} and p_{jk} are the relative frequencies of surname k in sections i and j , respectively.

The relationship of surname distributions among sections was graphically represented by an unweighted pair group method with arithmetic mean (UPGMA) dendrogram constructed with PHYLIP 3.6 software (Felsenstein 2005).

Comparison between Geographic and Euclidean Distances between Sections

For all analyses concerning geographic distance, the capital city of each section was taken as a central point, and distance was measured in kilometers as a straight line. A simple linear regression analysis was used to estimate relationships

Table 1. Section Name and ID, Number of Electors (*N*), Number of Surnames (*S*), and Fisher's Alpha (*a*)

ID	Section Name	<i>N</i>	<i>S</i>	<i>a</i>	ID	Section Name	<i>N</i>	<i>S</i>	<i>a</i>
Potosí (Bolivia)					46	Yacuiba	154,682	5,813	260
1	Caripuyo	16,861	1,297	116	47	Caraparí	21,982	1,348	139
2	Villa De Sacaca	12,778	1,036	110	48	Villamontes	71,574	3,951	218
3	Uyuni	77,205	3,102	98	49	Villa San Lorenzo	55,200	1,381	102
4	Tomave	25,369	1,038	35	50	El Puente	29,293	826	48
5	Porco	17,433	1,036	72	Jujuy (Argentina)				
6	San Pedro Buena Vista	19,586	2,452	231	51	Capital	115,019	8,689	294
7	Yambata	7,854	878	129	52	Palpala	23,858	2,274	219
8	Toro Toro	4,189	512	10	53	San Antonio	2,059	501	119
9	Ocurí	16,280	1,850	211	54	El Carmen	32,007	2,953	238
10	Colquechaca	37,905	2,244	134	55	San Pedro	39,084	3,559	315
11	Ravelo	25,958	1,690	120	56	Santa Barbara	8,514	1,336	247
12	Pocoata	34,367	2,011	117	57	Ledesma	40,492	3,627	284
13	Betanzos	50,229	1,990	97	58	Valle Grande	1,445	158	39
14	Chaquí	20,649	996	47	59	Tumbaya	2,920	348	64
15	Tacobamba	19,326	1,820	126	60	Tilcara	5,606	611	91
16	Llica	7,198	327	23	61	Humahuaca	10,499	713	81
17	Tahua	4,163	230	16	62	Cochinoca	5,902	427	68
18	San Agustín	2,652	97	10	63	Rinconada	1,639	206	34
19	Arapampa	11,741	838	91	64	Santa Catalina	2,108	188	36
20	Acasio	9,091	737	107	65	Yavi	9,626	1,150	104
21	Puna	85,047	2,760	76	66	Susques	1,617	91	17
22	Caiza	30,092	1,278	72	Salta (Argentina)				
23	Villazón	76,769	3,469	155	67	Capital	271,032	24,013	325
24	Cotagaita	85,575	2,744	123	68	La Caldera	4,099	927	143
25	Vitichi	31,955	1,442	79	69	Güemes	24,569	2,698	276
26	Colcha	17,897	702	36	70	Metan	24,974	2,588	262
27	San Pedro De Quemes	2,816	223	28	71	Anta	29,477	2,461	183
28	Uncía	51,491	2,858	216	72	Rivadavia	14,646	1,098	111
29	Chayanta	35,884	2,116	135	73	Oran	67,281	5,760	291
30	Llallagua	138,344	5,011	206	74	San Martin	77,888	6,540	274
31	Tupiza	125,889	3,989	143	75	Iruya	3,490	285	48
32	Atocha	80,173	2,822	135	76	Santa Victoria	6,384	465	72
33	San Pablo de López	4,862	290	26	77	Cerrillos	14,825	2,020	167
34	Mojinete	1,865	126	8	78	Chicoana	11,249	1,092	117
35	San Antonio de Esmoruco	1,655	67	11	79	La Viña	4,811	762	122
36	Potosí	528,266	8,907	160	80	Guachipas	2,177	389	80
37	Tinguipaya	24,859	1,418	73	81	Rosario de la Frontera	17,679	1,862	217
38	Yocalla	17,045	658	39	82	La Candelaria	3,816	613	100
39	Urmiri	6,620	221	15	83	Cafayate	7,197	837	86
Tarija (Bolivia)					84	San Carlos	4,422	400	49
40	Padcaya	49,902	1,287	114	85	Molinos	3,328	252	37
41	Bermejo	85,556	2,747	193	86	Cachi	4,380	415	77
42	Uriondo	30,312	2,077	134	87	Rosario de Lerma	18,945	1,916	149
43	Yunchará	12,865	517	59	88	La Poma	1,067	160	55
44	Entre Ríos	65,209	2,050	171	89	Los Andes	3,353	350	42
45	Tarija	334,632	6,218	212					

between Euclidean and geographic distances, and a between-matrix correlation coefficient was calculated. Correlation significance was evaluated by the Mantel test (Mantel 1967), using PASSaGE 2 software (Rosenberg and Anderson 2011). All 89 sections under study were analyzed.

Isonymic relations between sections within each country and between countries were also explored. However, geographic distances between sections varied from 4 to 893 km. To account for the effect of geographic distance on Euclidean distance, section comparisons that evened out geographic distances were chosen through a process of trial and error. Ultimately, 446 comparisons were chosen for Argentina, 520 for Bolivia, and 98 for comparisons between sections of both countries. Geographic distances for each comparison were similar: 117.6 km, 116.7 km, and 115.7 km, respectively. Student's *t* test was used to study differences between the mean Euclidean distance for each comparison.

Results

Surnames and Population Diversity

Table 1 summarizes the numbers of voters (*N*) and surnames (*S*) and Fisher's alpha (α) for each of the Argentine and Bolivian sections analyzed. Considering sample size, the maximum demographic difference was between La Poma (Argentina), with 1,067 voters, and the capital city of Potosí (Bolivia), with 528,266 voters.

Mean alpha values for the major administrative divisions Tarija, Jujuy, and Salta were 150, 141, and 143, respectively. However, the mean alpha for Potosí was 93, significantly lower than that of Tarija and Salta, indicating higher inbreeding and drift in this section. Seven alpha values lower than 20 were found in this analysis, six from Potosí (sections 8, 17, 18, 34, 35, and 39; see Table 1) and one from Jujuy (section 66). The highest alphas were found in the capital districts of Jujuy and Salta and in San Pedro (Jujuy), with values of 294, 325, and 315, respectively (Table 1).

Clusters

To identify a useful number of clusters, an arbitrary line was drawn parallel to the base of the dendrogram (red line in Figure 2). As shown in

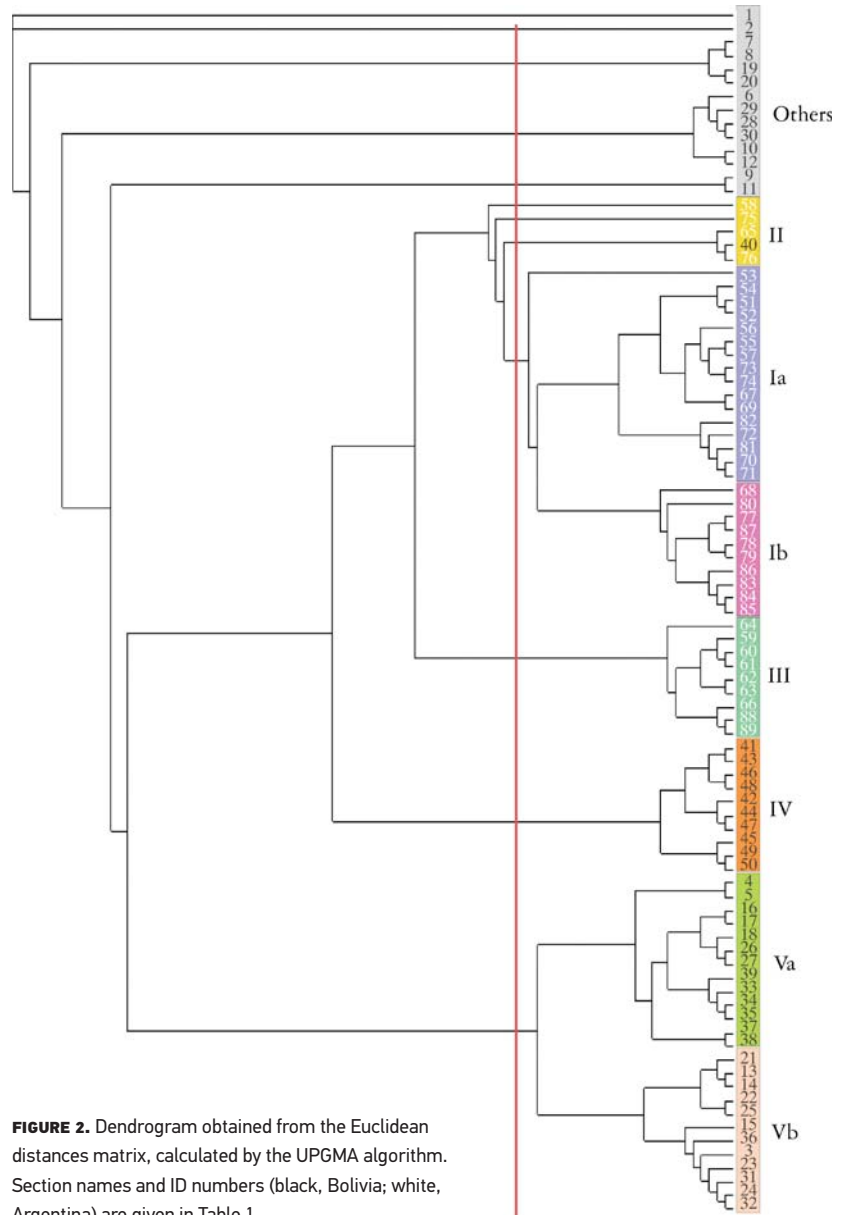


FIGURE 2. Dendrogram obtained from the Euclidean distances matrix, calculated by the UPGMA algorithm. Section names and ID numbers (black, Bolivia; white, Argentina) are given in Table 1.

Figure 2, five clusters could be roughly defined. The sections with the lowest Euclidean distances (i.e., the most closely related populations) were in cluster I, which was subdivided into two clusters, Ia and Ib, and consisted only of Argentine sections. Cluster II included five sections, four from Argentina and one from Padcaya (ID 40), a section of Tarija (Bolivia). Cluster III contained the remaining Argentine sections, while cluster IV and cluster V (subdivided into Va and Vb) consisted exclusively of Bolivian populations. The most distant clusters are clearly identified ("Others" in Figures 2 and 3).

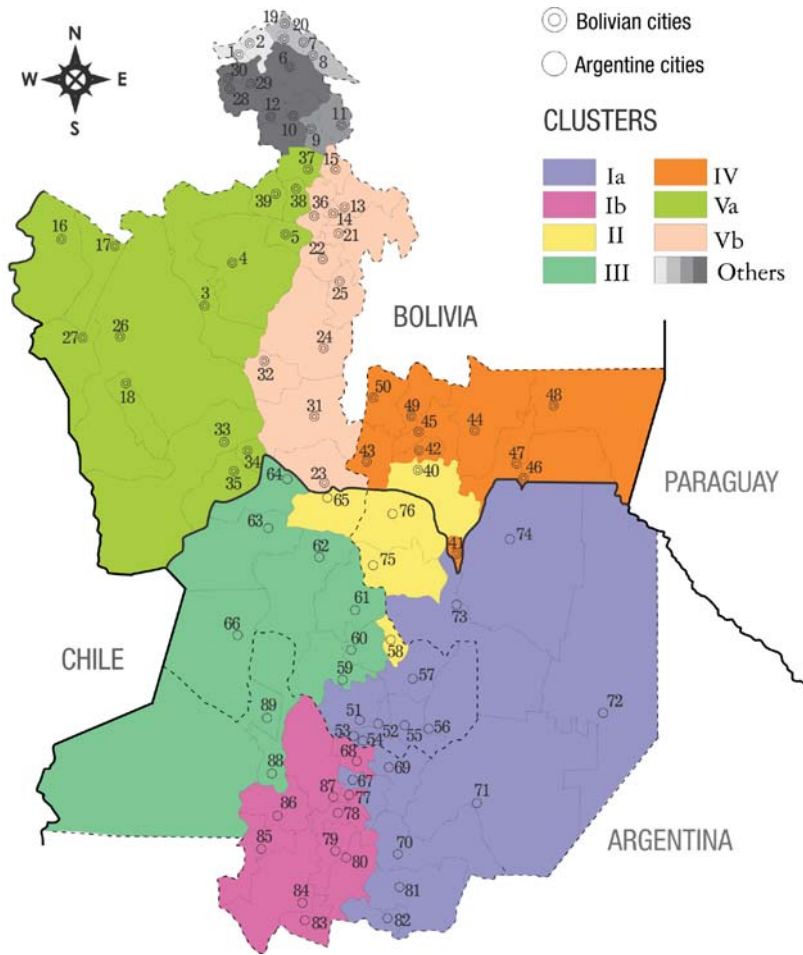


FIGURE 3. Clusters of sections, classified and colored according to the UPGMA dendrogram. Section ID numbers are given in Table 1. Cluster numbers correspond to Figure 2. Only cluster II contains sections from both Argentina and Bolivia.

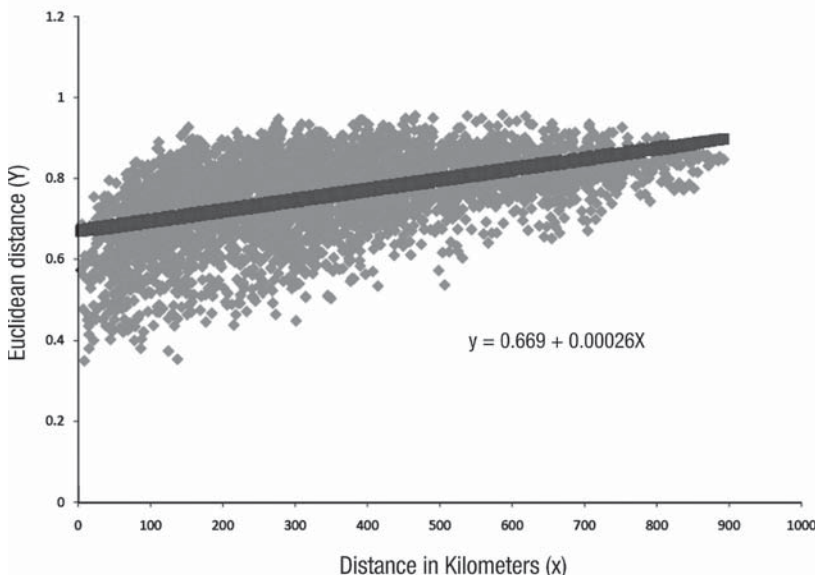


FIGURE 4. Regression of Euclidean distance over kilometers.

They are located in the northern portion of Potosí (Bolivia) and contained surnames different from those registered in other sections of the study area.

Figure 3 is a graphic representation of our calculated dendrogram overlaying a map with Argentine and Bolivian administrative divisions. It shows that cluster II was the only cluster formed by sections from both countries. With this sole exception, the political border was always evident in the cluster analysis.

In general, clusters were composed of sections from the same country that share similar geographic conditions and/or are separated by small geographic distances. Large parts of clusters Ia and IV are within the Chaco ecoregion, a vast, semiarid plain with no important physical barriers, considered one of the major wooded grassland areas. Differences in climatic and edaphic conditions, as well as overutilization of resources, are principal problems for economic and demographic development in this area. Clusters II, Ib, Vb, and part of Ia are within the Yunga ecoregion, a stretch of forest along the eastern slope of the Andes Mountains that includes parts of Peru, Bolivia, and northern Argentina. Its climate is rainy, humid, and warm. Clusters III, Va, and “Others” are within the Puna ecoregion. With altitudes more than 3,000 m above sea level, Puna’s climate is cool with low annual precipitation but differs greatly between dry and wet seasons. Despite the fact that the Puna ecoregion has always had limited water resources, human occupation here has a long history, with evidence from prehistoric periods.

Comparisons between Euclidean and Geographic Distances

The correlation coefficient between geographic and Euclidean distance was 0.51 ($p < 0.001$ after 1,000 permutations), showing that the relationship between both distances is statistically significant. This explains why, in general, sections with small geographic distances had small Euclidean distances and tended to cluster together in the dendrogram (Figure 2). Figure 4 summarizes the linear regression of Euclidean distance over kilometers.

Table 2 shows the differences in Euclidean distances (i.e., surname distribution) between Argentina-only sections, between Bolivia-only sections, and between Argentine and Bolivian sections, separated by an average distance of approximately

116 km. The largest average Euclidean distance was between Argentine and Bolivian sections (0.723), a significantly greater distance than that between Argentine sections (0.655, $p < 0.001$) but not significantly greater than the average Euclidean distance between Bolivian sections (0.704; $0.05 < p < 0.1$). The mean isonymic distance between Argentine sections (0.655) was significantly smaller than the mean observed between Bolivian sections (0.704; $p < 0.001$) and smaller still than that obtained when sections between countries were compared (0.723; $p < 0.001$).

Discussion

We used electoral registers to reconstruct the isonymic structure of 89 sections from four administrative divisions (Salta and Jujuy in Argentina; Potosí and Tarija in Bolivia), including the international border (Figure 1). With them, we were able to assess similarities between populations, their possible common origins, and the persistence of old colonial structures.

Population diversity, measured through Fisher's alpha, was significantly lower in Potosí than in Tarija and Salta but not significantly lower than in Jujuy. This higher isolation found in Potosí is probably due to its altitude, which may have worked as a geographical barrier, constraining population movements. Lower alpha values at high altitudes have been previously described for Bolivia (Rodríguez-Larralde et al. 2011).

An international border is basically an imaginary line between two nations. In this particular region, the two nations share a similar history and a common language. However, our results suggest that the political administrative boundary (i.e., the international border) has had a barrier effect, strengthened by fluvial and altitudinal limitations, which increased isonymic distances between sections located in different countries compared to sections within one country, even though they were separated by the same geographic distance (~116 km). This effect can also be observed in the dendrogram (Figures 2 and 3), where only cluster II included sections from both countries, one from Bolivia and four from Argentina. The other clusters included sections from one country only: clusters I and III included populations from both Argentine

Table 2. Comparisons of Euclidean Distances between Sections

Populations Compared	Number of Comparisons	Euclidean Distance (mean \pm SD)	Geographic Distance (mean \pm SD)
Argentina–Argentina	446	0.655 \pm 0.103	117.6 \pm 46.81
Bolivia–Bolivia	520	0.704 \pm 0.100	116.7 \pm 49.57
Argentina–Bolivia	98	0.723 \pm 0.091	115.7 \pm 37.71

Sections are separated by an average geographic distance of ~116 km.

provinces, Salta and Jujuy, whereas clusters IV and V consisted of Bolivian sections exclusively from Tarija or from Potosí, respectively (Figure 3). Strangely, the dendrogram did not reproduce the frontier conurbations shown in Figure 1. Given that isonymic distances were significantly correlated with geographic distances, as expected in a model of isolation by distance, and given that a small Euclidean distance between two sections implies a similar distribution of surnames between them, our results suggest that, over time, migratory movements within this area of Argentina must have been stronger and more dynamic than those within Bolivia or between both countries.

These results contrast both with the economic dynamics of the region, where records show an intense mobility and continuous trade on the main border paths, and with the demographic characteristics of populations in the region. Regarding economic dynamics, from the perspective of the anthropology of migration proposed by Tarrius (2000), population movements in the Argentine-Bolivian border region could be interpreted as the preeminence of the mobile over the sedentary subject. The final effect of such movements in a border region is the creation of nonlocalized social structures instead of new settlement types (Mallimaci 2012). Subjects circulate in the international border area, without settling down, creating areas of passage “that arise as the effect of mobility and its practice” (Tapia Ladino and Santana 2013) but do not materialize new structured populations and do not affect the structure of neighboring border societies.

Regarding demographic characteristics, the Argentine-Bolivian border conurbations have experienced significant population growth, especially on the Bolivian side. Among residents in Yacuiba, Bolivia (ID 46, Figure 3), only 5% come from Argentina, and in Villamontes, Bolivia (ID 48, Figure

3), only 3.7% (Souchaud and Martin 2007; Martin 2007). Migration between Bolivia and Argentina is characterized by its asymmetry: while the Bolivian migration to Argentina has been steadily increasing since the first census of 1869, Bolivia, in relation to other Latin American countries, has received the fewest immigrants in their republican history (Vacaflores 2003). This is especially so in the eastern part of the country. With the exception of the colonial period, this demographic stability has enabled ethnic and cultural diversity to remain stable, with few substantial changes. The great migration movements of the late nineteenth century and those caused by World Wars I and II were not heading for Bolivia (Vacaflores 2003).

Bolivian migration to Argentina can be classified by different periods that correspond to frontier, regional, and transnational migratory patterns. In each period, migrants developed different strategies of relationship between their places of origin and destination, which affected the frequency and distribution of surnames in the frontier (Sassone 2009). The earliest period ran from 1880 to 1960 and saw a frontier model of migration in response to seasonal demands for male agricultural labor in northwestern Argentina. During 1960–1985 migration followed a regional pattern. Farmers temporarily left their communities and integrated into agricultural activities in other regions of Argentina. By the end of this period, Bolivian migrants tended to settle in urban areas of Argentina, especially in the province of Buenos Aires.

The transnational model started about twenty years ago and included a wider range of destinations for Bolivian migrants (Brazil, Chile, European countries, Japan, etc.). In this last stage, the distribution of Bolivian migrants in Argentina was characterized by two-thirds living in the metropolitan area of Buenos Aires and the rest spreading to urban and rural areas throughout the country. According to census data and historical-geographical characterizations of migration, few Bolivians are actually installed in the Argentine territory neighboring the international border. For those who do stay, their migration is particularly attached to large cities (the capital cities of Salta and San Salvador de Jujuy), where migrant surnames do not substantially affect the frequency and distribution of the Argentine host populations' surnames. In the three migration periods (frontier, regional,

and transnational), a mobile lifestyle predominated over a sedentary one (Tarrius 2000).

Another important factor to consider is the high frequency of Andean indigenous surnames (Quechua or Aymara) in southern Bolivia and northwestern Argentina. Dipierri et al. (2005a) published a list of the 100 most common surnames in Argentina taken from the same electoral roll used in the present study. These 100 names accounted for 29.5% of all voters, and all were classified by Faure Sabater et al. (2001) as being of Spanish origin. Among the original surnames, *Mamani* was the most common, ranking 149th nationally, with 19,725 carriers (Dipierri et al. 2005b). However, in the Argentine northwest this name ranked 21st among the 100 most frequent, with an occurrence of 14,395, which means that 73% of individual carriers were localized in this region. Rodríguez-Laralde et al. (2011), when analyzing the 50 most common surnames in Bolivia, found that *Mamani* was ranked first (913,705 individuals), followed by *Quispe*, *Condori*, and *Choque*. Among the surnames of Spanish origin, *Flores* was the most common (467,059 individuals), followed by *Vargas*, *Rodríguez*, *Rojas*, *Gutiérrez*, *López*, *Cruz*, *Fernández*, and *García*. Coincidentally, these surnames, both indigenous and Spanish, were most frequent in the Argentine provinces of Salta and Jujuy (Dipierri et al. 2005b).

The fact that these Argentine and Bolivian sections belonged to the same administrative region during the colonial period, when the use of surnames in the tax-paying population was established, means that they consequently have a high percentage of surnames in common. This greatly differs from other sections outside the studied area, in both Argentina and Bolivia. However, this common past does not have a homogeneous effect on the contemporary population. Quoting Cheshire (2014), surname adoptions “are systematic but not geographically uniform, resulting in spatial structuring of surname distributions that may subsequently be obscured by population movements.” Migration processes and the establishment of new towns have always been asymmetric and oriented toward centers of economic allure, which are currently located far from the Argentine-Bolivian border zone.

Conclusion

According to the genetic distances estimated through the isonymic method and despite the existence of three major conurbations located on this international frontier, Argentine and Bolivian populations located in this large border area are not as related as expected. Regardless of intense past and present human mobility, the political administrative border between the two countries has certain geographical features that impose complications for the establishment of a population and thus would function as a barrier to the flow and exchange of surnames. On both sides of the border, populations have remained highly structured with clear differences in the frequency and distribution of surnames, which are a reflection of its complex pre- and postcolonial history.

ACKNOWLEDGMENTS

The authors would like to thank the electoral authorities of Argentina and Bolivia, for the access to surnames database.

Received 3 December 2015; revision accepted for publication 17 June 2016.

LITERATURE CITED

- Albeck, M. E., and M. S. Ruiz. 2003. El tardío en la Puna de Jujuy: Poblados, etnias y territorios. *Cuad. Fac. Hum. Cien.* 20:199–219.
- Bailly, A. S. 2013. Las fronteras: Representaciones, poderes y divisiones territoriales. In: *Fronteras en movimiento e imaginarios geográficos*, A. Nuñez, R. Sánchez, and D. Arenas, eds. Santiago, Chile: RIL Press, 11–14.
- Barrai, I., G. Barbujani, M. Beretta et al. 1987. Surnames in Ferrara: Distribution, isonymy and levels of inbreeding. *Ann. Hum. Biol.* 14:415–423.
- Barrai, I., A. Rodríguez-Larralde, E. Mamolini et al. 2001. Isonymy structure of USA population. *Am. J. Phys. Anthropol.* 114(2):109–123.
- Barrai, I., A. Rodríguez-Larralde, F. Manni et al. 2002. Isonymy and isolation by distance in the Netherlands. *Hum. Biol.* 74:263–281.
- Benedetti, A., and E. Salizzi. 2011. Llegar, pasar, regresar a la frontera: Aproximación al sistema de movilidad argentino-boliviano. *Rev. Transp. Terr.* 4:148–179.
- Boldsen, J., and G. E. Lasker. 1996. Relationship of people across an international border based on an isonymy analysis across the German-Danish frontier. *J. Biosoc. Sci.* 28(2):177–183.
- Bronberg, R. A., J. E. Dipierri, E. L. Alfaro et al. 2009. Isonymy structure of Buenos Aires city. *Hum. Biol.* 81(4):447–461.
- Cavalli-Sforza, L. L., and A. W. F. Edwards. 1967. Phylogenetic analysis models and estimation procedures. *Am. J. Hum. Genet.* 19:233–257.
- Celton, D., and A. Carbonetti. 2007. Argentina–Bolivia: Historia de un espacio fronterizo. In: *Movilidad y procesos migratorios en el espacio de frontera argentino boliviana*, H. Domenach, D. Celton, H. Arze, and P. Hamelin, eds. Córdoba, Argentina: Universidad Nacional de Córdoba Press, 25–37.
- Cheshire, J. 2014. Analysing surnames as geographic data. *J. Anthropol. Sci.* 92:99–117.
- Cheshire, J. A., P. A. Longley, and A. D. Singleton. 2010. The surname regions of Great Britain. *J. Maps* 6(1):401–409.
- Cheshire, J. A., P. Mateos, and P. A. Longley. 2011. Delineating Europe's cultural regions: Population structure and surname clustering. *Hum. Biol.* 83(5):573–598.
- Christensen, A. F. 1999. Population relationships by isonymy in frontier Pennsylvania. *Hum. Biol.* 71(5):859–873.
- Crow, J. E., and A. P. Mange. 1965. Measurements of inbreeding from the frequency of marriages between persons of the same surnames. *Eugen. Q.* 12:190–203.
- Dipierri, J. E., E. L. Alfaro, C. Scapoli et al. 2005a. Surnames in Argentina: A population study through isonymy. *Am. J. Phys. Anthropol.* 128(1):199–299.
- Dipierri, J. E., S. B. Ocampo, and A. Russo. 1991. An estimation of inbreeding from isonymy in the historical (1734–1810) population of the Quebrada de Humahuaca. *J. Bios. Sci.* 23(1):23–31.
- Dipierri, J. E., A. Rodríguez-Larralde, E. L. Alfaro et al. 2005b. Distribución de apellidos y migración en el noroeste argentino. *Antropo* 10:35–50.
- Dipierri, J. E., A. Rodríguez-Larralde, E. L. Alfaro et al. 2007. Isonymic structure of the Argentine Northwest. *Ann. Hum. Biol.* 34(4):498–503.
- Faure Sabater, R., M. A. Ribes, and A. García. 2001. *Diccionario de apellidos españoles*. Madrid: Espasa Calpe.
- Felsenstein, J. 2005. PHYLIP (Phylogeny Inference Package), version 3.6. Distributed by the author. Department of Genome Sciences, University of Washington, Seattle.
- Herrera-Paz, E. F. 2013. Estimación del aislamiento genético e ilegitimidad en 60 comunidades hondureñas mediante el análisis de apellidos. *Rev. Med. Hondur.* 81(1):18–28.
- Liu, Y., L. Chen, Y. Yuan et al. 2012. A study of surnames in China through isonymy. *Am. J. Phys. Anthropol.*

- 148:341–350.
- Mallimaci, A. I. 2012. Movilidades y permanencias: Repensando la figura del movimiento en las migraciones. *Rev. Temas Antropol. Migración* 3:77–92.
- Manni, F., and I. Barrai. 2001. Genetic structures and linguistic boundaries in Italy: a microregional approach. *Hum. Biol.* 73:335–347.
- Mantel, N. 1967. The detection of disease clustering and a generalized regression approach. *Cancer Res.* 27:209–220.
- Martin, C. 2007. La ciudad de Villamontes: Emergencia urbana en el Oriente e interacciones migratorias. In: *Movilidad y procesos migratorios en el espacio de frontera argentino boliviana*, H. Domenach, D. Celton, H. Arze, and P. Hamelin, eds. Córdoba, Argentina: Universidad Nacional de Córdoba Press, 95–132.
- Rodriguez-Larralde, A., J. E. Dipierri, E. L. Alfaro Gomez et al. 2011. Surnames in Bolivia: A study of the population of Bolivia through isonymy. *Am. J. Phys. Anthropol.* 144(2):177–184.
- Rodriguez-Larralde, A., A. Gonzales-Martin, C. Scapoli et al. 2003. The names of Spain: A study of the isonymy structure of Spain. *Am. J. Phys. Anthropol.* 121:280–292.
- Román-Busto, J., M. Tasso, G. Caravello et al. 2013. Genetics of population exchange along the historical Portuguese-Spanish border. *J. Biosoc. Sci.* 45(1):79–93.
- Rosenberg, M. S., and C. D. Anderson. 2011. PASSaGE: Pattern analysis, spatial statistics and geographic exegesis. Version 2. *Methods Ecol. Evol.* 2:229–232.
- Sanchez-Albornoz, N. 1974. *Population of Latin America: A History*. Berkeley: University of California Press.
- Sassone, M. S. 2009. Breve geografía histórica de la migración boliviana en la Argentina. In: *Buenos Aires Boliviana: Migración, construcciones identitarias y memoria*. Ciudad Autónoma de Buenos Aires, Argentina: Comisión para la Preservación del Patrimonio Histórico Cultural Press, 389–402.
- Scapoli, C., E. Mamolini, and A. Carrieri. 2007. Surnames in western Europe: A comparison of the subcontinental populations through isonymy. *Theor. Popul. Biol.* 71(1):37–48.
- Sella, G., A. Marin, and A. Santovito. 2010. Demographic structure and microevolution of an Italian alpine isolated population. *Genetika* 46(8):1,132–1,138.
- Souchaud, S., and C. Martin. 2007. Yacuiba: un islote de la mundialización en el Chaco boliviano. In: *Movilidad y procesos migratorios en el espacio de frontera argentino boliviana*, H. Domenach, D. Celton, H. Arze, and P. Hamelin, eds. Córdoba, Argentina: Universidad Nacional de Córdoba Press, 55–93.
- Tapia Ladino, M., and C. O. Santana. 2013. Los Andes Tarapaqueños, nuevas espacialidades y movilidad fronteriza: ¿barrera geográfica o espacio para la integración? In: *Fronteras en movimiento e imaginarios geográficos*, A. Nuñez, R. Sánchez, and D. Arenas, eds. Santiago, Chile: RIL Press, 243–274.
- Tarrius, A. 2000. Leer, describir, interpretar las circulaciones migratorias: Conveniencia de la noción de “territorio circulatorio.” Los nuevos hábitos de la identidad. *Relaciones* 21(83):37–66.
- Vacaflares, V. 2003. Migración interna e intraregional en Bolivia: Una de las caras del neoliberalismo. *Rev. Aportes Andinos* 7:1–8.
- Wilson, T. M., and D. Hastings. 2012. Borders and borders studies. In: *A Companion to Border Studies*, T. M. Wilson and D. Hastings, eds. Oxford: Wiley-Blackwell, 1–25.
- Wright, S. 1951. The genetic structure of populations. *Ann. Eugen.* 15:323–354.
- Zagonel de Oliveira, M., L. Schuler-Faccini, D. A. Demarchi et al. 2013. So close, so far away: Analysis of surnames in a town of twins (Candido Godoi, Brazil). *Ann. Hum. Biol.* 77(2):125–136.