



Comparison of 2 proposed MLVA protocols for subtyping non-O157:H7 verotoxigenic *Escherichia coli*[☆]

Juliana González^{a,b}, Andrea Mariel Sanso^{a,c}, Paula María Alejandra Lucchesi^{a,c},
Ana Victoria Bustamante^{a,c,*}

^a Laboratorio de Inmunoquímica y Biotecnología, CIVETAN-Facultad de Ciencias Veterinarias, Universidad Nacional del Centro de la Provincia de Buenos Aires (UNCPBA), 7000 Tandil, Argentina

^b Comisión de Investigaciones Científicas de la Provincia de Buenos Aires (CIC-PBA), Argentina

^c Consejo Nacional de Investigaciones Científicas y Técnicas (CONICET), Argentina

ARTICLE INFO

Article history:

Received 5 August 2013

Received in revised form 3 October 2013

Accepted 18 October 2013

Available online 31 October 2013

Keywords:

VTEC

MLVA

Non-O157 serotypes

Raw products

ABSTRACT

Multiple locus variable number tandem repeats (VNTRs) analysis (MLVA) has become a reliable tool, able to establish genetic relationships for epidemiological surveillance and molecular subtyping of pathogens such as verotoxigenic *Escherichia coli* (VTEC). This emerging pathogen whose primary reservoir is the cattle causes severe disease in humans, such as hemorrhagic colitis and hemolytic uremic syndrome. With the aim of comparing a recently proposed MLVA assay with that used routinely in our laboratory, we analyzed a set of VTEC isolates ($n = 72$) obtained from meat using both assays. All samples could be typed by the new MLVA assay, and an increase in the number of distinct profiles (31–43) was observed. However, intraserotype resolution was not significantly enhanced; thus, the incorporation of more VNTR loci is still needed to achieve a greater discrimination among non-O157:H7 serotypes.

© 2014 Elsevier Inc. All rights reserved.

1. Introduction

Variable number tandem repeats (VNTRs) comprise variable regions of many of the bacterial genomes. They consist of short sequences (known as repeat units), which are repeated in tandem, and vary in the number of copies, creating length polymorphisms. Multiple locus VNTR analysis (MLVA) is a reliable tool, able to establish genetic relationships between bacterial strains for epidemiological surveillance and molecular subtyping of pathogens such as verotoxigenic *Escherichia coli* (VTEC) (Keys et al., 2005; Lindstedt et al., 2003, 2004, 2007; Noller et al., 2003, 2004, 2006).

VTEC has been identified as an important causal agent of hemolytic uremic syndrome (HUS) and bloody diarrhea (Griffin, 1998), being a frequently cause of gastrointestinal disease in America and Europe (Beutin et al., 1998; Huppertz et al., 1996; Johnson et al., 2006). Cattle colonized by VTEC are thought to be the primary reservoir of this bacterium, and its transmission to humans frequently results from the ingestion of contaminated food of bovine origin (Karmali, 1989; Nataro and Kaper, 1998). The VTEC group is very diverse being O157:H7 the most common serotype associated with sporadic cases and large outbreaks of HUS in many countries (Armstrong et al., 1996; Tarr, 1995). However, there is a growing

concern about the risk to human health associated with non-O157 VTEC serotypes (Johnson et al., 2006).

MLVA allows differentiating closely related isolates and, at epidemiological level, source tracking during investigation of outbreaks, as well as the interpretation of suspected outbreaks. Several MLVA protocols have been developed for the specific typing of VTEC O157:H7 (Keim et al., 2000; Lindstedt et al., 2004; Noller et al., 2003) and other ones for non-O157:H7 serotypes (Izumiya et al., 2010; Lindstedt et al., 2007; Manges et al., 2009).

In previous studies, we implemented a generic *E. coli* MLVA assay based on the combination of 7 loci with different degrees of polymorphism proposed by Lindstedt et al. (2007), called by us MLVA_{G7}. The results confirmed the usefulness of this assay for the genetic characterization of native VTEC strains of different serotypes but pointed out the need to incorporate new repeat-containing loci for the characterization of non-O157 isolates (Bustamante et al., 2010; Franci et al., 2011). Recently, Løbersli et al. (2012) extended the previously published MLVA_{G7}, incorporating 3 more loci, 2 VNTRs (CVN016, CVN017), and a CRISPR locus (CCR001). In the present study, this extended protocol is designed as MLVA_{G10}.

The clustered, regularly interspaced, short palindromic repeat (CRISPR) loci are a class of DNA sequences identified by Jansen et al. (2002) characterized by direct repeats of 24–47 base pairs (bp), separated by sequences of variable size, of between 21 and 72 bp, called spacers (Grissa et al., 2007; Horvath and Barrangou, 2010). Such sequences originally called short regularly spaced repeats have been detected in different prokaryotes and have a similar structure in phylogenetically distant groups (Mojica et al., 2000).

[☆] Part of the content of this manuscript corresponded to the graduation thesis of Juliana Gonzalez (unpublished, Facultad de Ciencias Veterinarias, UNCPBA).

* Corresponding author. Tel./fax: +54-249-4439850.

E-mail address: avbustaman@vet.unicen.edu.ar (A.V. Bustamante).

The importance of tracking outbreaks of foodborne illness and the emergence of new virulent subtypes of foodborne pathogens have created the need for rapid and reliable subtyping methods for VTEC. In Argentina, 40% of cases of infection with VTEC serotypes are due to non-O157:H7 (Rivas et al., 2008), and this trend worldwide is also increasing (Coombes et al., 2008), so it is important to have a fast methodology for the study of genetic polymorphisms of any VTEC serotype. The objective of this study was to evaluate the power of discrimination of the new set of markers for typing VTEC strains isolated from meat products, most of which have been previously analyzed by MLVA_{G7} (Bustamante et al., 2010; Franci et al., 2011).

2. Materials and methods

2.1. Bacterial strains

A total of 72 isolates from the collection of the Laboratorio de Inmunología y Biotecnología (UNCPBA, Tandil, Argentina) were studied. They had been collected between 1998 and 2003 from minced meat, hamburgers, and viscera (Parma et al., 2000; Sanz et al., 2007). The isolates belonged to 25 serotypes: O2:NM (1), O8:H16 (2), O8:H19 (9), O20:H19 (2), O22:H8 (2), O79:H19 (2), O88:H21 (1), O91:H21 (1), O112:H2 (1), O113:H21 (3), O113:NM (10), O116:H21 (1), O117:H7 (4), O157:H7 (1), O171:H2 (1), O171:HNT (1), O171:NM (2), O174:H21 (6), O178:H19 (5), O185:H7 (1), ONT:H7 (5), ONT:H8 (1), ONT:H19 (2), ONT:H21 (4), and ONT:HNT (4). They have been previously analysed by PCR for the presence of genes encoding for verocytotoxin 1 and 2 (*vtx1* and *vtx2*), intimin (*eae*), enterohaemolysin (*ehxA*), STEC autoagglutinating adhesin (*saa*) (Blanco et al., 2004; Lucchesi et al., 2006; Parma et al., 2000; Sanz et al., 2007).

2.2. MLVA typing

The 10 VNTR loci studied, and the primers used were those proposed by Lindstedt et al. (2007) and Løbersli et al. (2012). The 7 loci proposed by Lindstedt et al. (2007) were analyzed, as described by Bustamante et al. (2010). Sixty isolates have been previously subtyped by MLVA_{G7} in our laboratory (Bustamante et al., 2010; Franci et al., 2011). The 3 additional loci proposed by Løbersli et al. (2012), CVN016, CVN017 and CCR001, were amplified using multiplex PCR assays. Each PCR was carried out in a 25-μL volume containing 1× PCR buffer (50 mmol/L KCl, 10 mmol/L Tris, pH 9, 0.1% Triton X-100), 2.5 mmol/L MgCl₂, 0.2 mmol/L of each dNTP, 2.5 pmol of each primer with 0.5 U Taq DNA polymerase (InBio, Highway, Argentina) and 2 μL of crude DNA extract. Thermal cycling conditions were the same as those detailed by Løbersli et al. (2012). PCR products were run in 3% agarose gels stained with SYBR Safe (Invitrogen, Inc. Carlsbad, CA, USA).

Allelic variants identified for each VNTR were sequenced with the same primers used to amplify those regions, using an ABI PRISM 3730XL analyzer (Macrogen, Inc, Seoul, Korea). The sequences obtained were analyzed using the software Chromas 2.32 (Technelysium Pty. Ltd., Tewantin, Australia) and those corresponding to the alleles of each VNTR aligned with the software Clustal W (Larkin et al., 2007).

2.3. Data analysis

The alleles were named according to the number of tandem repeat units (RU). The absence of amplification product was considered null allele, and it was designed with the arbitrary number 30. Cases in which an amplification product was observed but the repeated region was absent in the sequenced region were encoded with the arbitrary number 40. Alleles that showed partial repeats were designed with the closest complete repeat number (Hyytiä-Trees et al., 2006).

The diversity index (D_N) was calculated for each locus using the formula $D_N = 1 - \sum (f_a)^2$, where f_a is the allelic frequency (Noller et al., 2003). MLVA profiles were defined either taking into account the alleles at each of the 7 loci proposed by Lindstedt et al. (2007)—MLVA_{G7}—or including also the alleles for the 3 loci proposed by Løbersli et al. (2012)—MLVA_{G10}. Dendrograms were constructed using UPGMA cluster analysis implemented by software START Vs. 1.0.5 (Joley et al., 2001). The discrimination power of each of the methods (for the same set of samples) was assessed using the Simpson diversity index (D_S) (Hunter and Gaston, 1988).

In order to compare the proportion of isolates showing unique MLVA profiles identified by both methods, the McNemar test was used. Also, to estimate the concordance between MLVA_{G7} and MLVA_{G10} to detect unique MLVA profiles, we carried out an analysis using FREQ procedure of SAS v9.13 (Cary, NC).

3. Results and discussion

In this study, VTEC isolates belonging to 25 serotypes were characterized by 2 MLVA assays, one based on 7 loci (MLVA_{G7}) and another one including 3 more loci (MLVA_{G10}), in order to compare these approaches. For 60 isolates, CVN016, CVN017, and CCR001 data were added to the MLVA_{G7} data panel, previously obtained by Bustamante et al. (2010) and Franci et al. (2011). For the remaining 12 isolates, which had not been previously subtyped by MLVA, the 10 VNTR loci were amplified. Regarding these 12 isolates analyzed for the first time by MLVA_{G7}, new alleles (with respect to previously detected in our laboratory) for 2 loci were found, allele 4 for locus CVN001 and alleles 2 and 13 for CVN014. CVN003 locus was absent in 100% of the non-O157 isolates, agreeing with our previous results (Franci et al., 2011). Lindstedt et al. (2007), Løbersli et al. (2012), and Naseer et al., (2012) also observed null alleles for this locus in the majority of the isolates.

Regarding the 3 loci incorporated into the MLVA panel, CVN016 locus showed the highest variability with 6 alleles (Table 1), and a new allele variant with 3 RU was detected, in comparison to previous publications (Løbersli et al., 2012; Naseer et al., 2012). Only 2 isolates showed null alleles for this locus.

All the isolates showed null alleles for the locus CVN017, suggesting either locus absence or sequence polymorphism at priming sites. Løbersli et al. (2012) also observed null alleles for this locus in most of their samples, except in those belonging to serogroups O26, O103, O121, O145, and O177, while Naseer et al., (2012) omitted this locus in their study.

The CCR001 locus showed an RU of about 26 bp, a spacer of about 34 bp, and alleles with 2 or 3 RU, both included within the range detected by Løbersli et al. (2012). Allele 2 was the most commonly found; meanwhile, the allele with 3 RU was mainly present in isolates belonging to O8:H19 serotype. Sequencing of PCR products showed, on occasions, the same number of RU for amplimers of different lengths. On the other hand, the 2 O8:H16 isolates showed amplification products at this locus (data not shown); however, when we analyzed the sequences, we did not find the repeat region. This allele was arbitrarily designated with the number 40. Naseer et al., (2012) reported a remarkably broad allelic range for this locus (6–95), but the finding of alleles with such a high number of repetitions for a CRISPR locus is uncommon.

MLVA_{G10} data showed a number of alleles detected per locus ranging from 1 (CVN003) to 13 (CVN014), except the locus CVN017, which did not amplify in any of the samples. The number of repeats identified among the 10 loci analyzed ranged from 1 to 20, and a total of 39 alleles was recorded (Table 1).

Diversity indexes were calculated for all VNTRs. CVN014 was the most variable locus in the analysis ($D_N = 0.9$), followed by CVN016 ($D_N = 0.74$) (Table 1).

Table 1Characterization of the VNTR loci used in MLVA_{G10}.

	CVN001	CVN002	CVN003	CVN004	CVN007	CVN014	CVN015	CVN016	CVN017	CCR001
Repeat unit size (bp)	39	18	15	15	6	6	6	6	6	26 ^a
No. of alleles	6	2	1	4	2	13	2	6	0	3
Allelic range (TR)	1–9	1–8	5	9–12	6–9	2–18	5–10	2–20	–	2–3
Null alleles	No	Yes	Yes	No	Yes	No	Yes	Yes	Yes	Yes
D _N (Nei's diversity index)	0.60	0.15	0.03	0.20	0.08	0.90	0.08	0.74	0	0.33

^a This repeat size differs from the one previously reported by Löbersli et al. (2012).

A total of 31 MLVA_{G7} profiles were recorded, and 17 of them were unique. The most frequent profile was 7-1-30-12-6-8-5, shown in 11 isolates (15.28%) (Fig. 1) and Simpson's index of diversity for this method was $D_s = 0.95$. The loci with major influence on the clustering using MLVA_{G7} were CVN014, CVN001, and CVN004.

MLVA_{G10} assay displayed 43 profiles, increasing in 12 (38%) the number of genotypes compared with MLVA_{G7}. Twenty-nine profiles were unique being 7-1-30-12-6-8-5-2-30-2 the most frequent one (9 isolates, 12.5%) (Fig. 1), and the diversity index value for this new protocol was $D_s = 0.97$. The grouping of the isolates using each of the

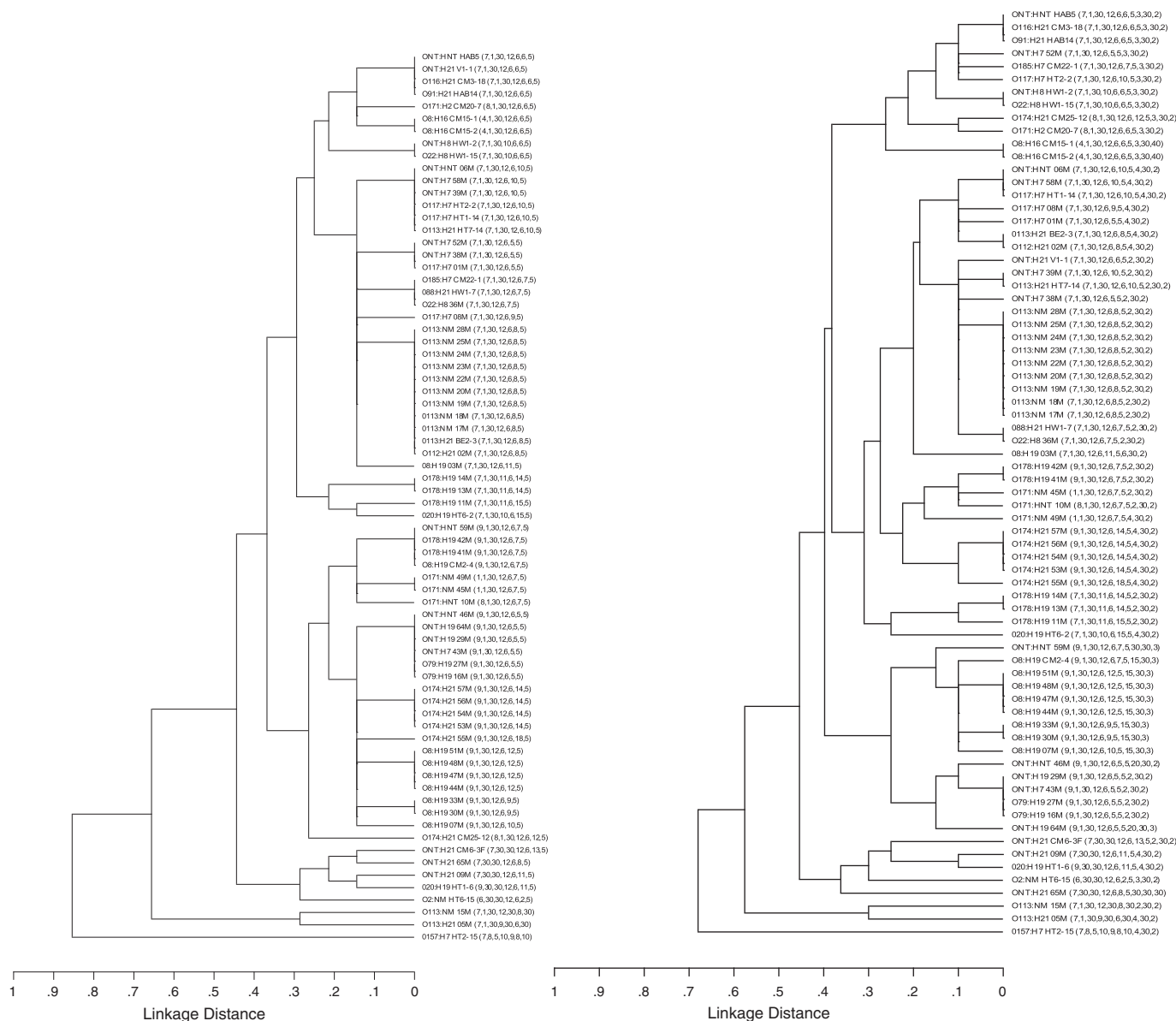


Fig. 1. Dendrograms of verotoxigenic *E. coli* investigated in this study by MLVA_{G7} (left) and MLVA_{G10} (right). MLVA profiles comprise the alleles in the order CVN001, CVN002, CVN003, CVN004, CVN007, CVN014, and CVN015 (MLVA_{G7}) or in the order CVN001, CVN002, CVN003, CVN004, CVN007, CVN014, CVN015, CVN016, CVN017, and CCR001 (MLVA_{G10}).

assays is shown in Fig. 1. The locus CVN014 again had the major influence in the clustering, followed by loci CVN001 and CVN016.

MLVA_{G7} identified 23.6% of isolates (17/72) with unique MLVA profiles, while MLVA_{G10} identified 40.3% (29/72), being these differences significant ($P = 0.0005$). The estimated Kappa index was 0.63, indicating a moderate concordance between the 2 methods.

Isolates of several serotypes could not be better discriminated in relation to MLVA_{G7} by using MLVA_{G10}. A comparison between the number of profiles by serotype obtained using each method is showed in Table 2. Only in few serotypes such as O117:H7 and O171:NM and O-non-typeable groups, the application of MLVA_{G10} allowed greater discrimination, being CVN016 the locus responsible of the increased resolution (except for O117:H7, in which CCR001 was also variable). We did not find any correlation between serotypes and particular profiles. Focusing only on the 3 markers which are exclusive of the MLVA_{G10}, the finding was that allele 15 of CVN016 was only present among O8:H19 isolates (in 9 out of 10) and was one of the alleles with the highest number of repeat units. In relation to inter-serotype resolution, several isolates belonging to different serotypes remained clustered, sharing a same MLVA profile despite the inclusion of 3 more loci in MLVA_{G10}.

Although MLVA_{G10} allowed an increment in the number of profiles compared to results obtained by MLVA_{G7} for the same set of isolates (from 31 to 43), a significantly enhanced intraserotype resolution was not achieved (Table 2). Løbersli et al. (2012), who extended the MLVA protocol designed by Lindstedt et al. (2007), compared both methods and reported an increase in the number of genotypes (from 296 to 507). However, significant increases occurred mainly in O128, O103: H2, O145, and, particularly in O26:H11, which are serogroups/serotypes not evaluated in the present study.

In summary, we evaluated a panel of 10 VNTR loci to subtype VTEC strains and were able to characterize all isolates using this analysis. Not all of the VNTRs showed the expected variability: 1 locus could not be amplified in any of the samples (CVN017), 3 loci (CVN002, CVN007, and CVN015) had only 2 alleles, except some samples with null alleles, and another locus showed a single allele (CVN003, in isolation O157:H7). Similarly, Naseer et al., (2012) recognized that, in their collection of isolates, some loci had little (CVN003 and CVN007) or no (CVN015) discrimination power. From the 3 loci incorporated, in the present study, only 1 was discriminative, CVN016, while CCR001 resulted to be a controversial and limited polymorphic marker and the remaining one, CVN017, did not amplify in our sample set, as it was above indicated. Taking into account these results together with the facts that some serotypes were represented by few isolates and that there is not enough epidemiological information about all of them, it is not possible to draw definite conclusions regarding the usability of these MLVA assays for outbreak investigations. Although other MLVA assays have been proposed for non-O157 strains, they have been designed for specific serogroups such as O26

and O111 (Izumiya et al., 2010; Miko et al., 2010). For these reasons, there remains a need to incorporate more repeat containing loci to achieve a greater discrimination in several non-O157:H7 serotypes.

Acknowledgments

We thank M. R. Ortiz for her technical assistance and Edgardo Rodríguez for statistical analysis. This work was supported by grants from the CONICET, FONCYT, and SECAT-UNICEN.

References

- Armstrong GL, Hollingsworth J, Morris JG. Emerging foodborne pathogens: *Escherichia coli* O157:H7 as a model of entry of a new pathogen into the food supply of the developed world. *Epidemiol Rev* 1996;18:29–51.
- Beutin L, Zimmermann S, Gleier K. Human infections with Shiga toxin-producing *Escherichia coli* other than serogroup O157 in Germany. *Emerg Infect Dis* 1998;4: 635–9.
- Blanco M, Padola NL, Krüger A, Sanz ME, Blanco JE, González EA, Dahbi G, Mora A, Bernárdez MI, Etcheverría AI, Arroyo GH, Lucchesi PMA, Parma AE, Blanco J. Virulence genes and intimin types of Shiga-toxin-producing *Escherichia coli* isolated from cattle and beef products in Argentina. *Int Microbiol* 2004;7:269–76.
- Bustamante AV, Sanso AM, Lucchesi PMA, Parma AE. Genetic diversity of O157:H7 and non O157 verocytotoxigenic *Escherichia coli* from Argentina by multiple-loci VNTR analysis (MLVA). *Int J Med Microbiol* 2010;300:212–7.
- Coombs BK, Wickham ME, Mascarenhas M, Gruenheid S, Finlay BB, Karmali MA. Molecular analysis as an aid to assess the public health risk of non-O157 Shiga toxin-producing *Escherichia coli* strains. *Appl Environ Microbiol* 2008;74: 2153–60.
- Franci T, Sanso AM, Bustamante AV, Lucchesi PMA, Parma AE. Genetic characterization of non-O157 verocytotoxigenic *Escherichia coli* isolated from meat foods from Argentina using multiple-locus variable-number tandem repeat analysis (MLVA). *Foodborne Pathog Dis* 2011;8:1019–23.
- Griffin PM. Epidemiology of Shiga toxin-producing *Escherichia coli* infections in the United States. In: Kaper JB, O'Brien AD, editors. *Escherichia coli* O157:H7 and other Shiga toxin-producing *E. coli* strains. Washington DC, USA: American Society for Microbiology; 1998. p. 15–22.
- Grissa I, Vergnaud G, Pourcel C. The CRISPRdb database and tools to display CRISPRs and to generate dictionaries of spacers and repeats. *BMC Bioinformatics* 2007;8:172.
- Horvath P, Barrangou R. CRISPR/Cas, the immune system of bacteria and archaea. *Science* 2010;327:167–70.
- Hunter PR, Gaston MA. Numerical index of the discriminatory ability of typing systems: an application of Simpson's index of diversity. *J Clin Microbiol* 1988;26:2465–6.
- Huppertz HI, Busch D, Schmidt H, Aleksic S, Karch H. Diarrhea in young children associated with *Escherichia coli* non-O157 organisms that produce Shiga-like toxin. *J Pediatr* 1996;128:341–6.
- Hyttiä-Trees E, Smole SC, Field PA, Swaminathan B, Ribot EM. Second generation subtyping: a proposed PulseNet protocol for multiple-locus variable-number tandem repeat analysis of Shiga toxin-producing *Escherichia coli* O157 (STEC). *Foodborne Pathog Dis* 2006;3:118–31.
- Izumiya H, Pei Y, Terajima J, Ohnishi M, Hayashi T, Iyoda S, Watanabe H. New system for multilocus variable-number tandem-repeat analysis of the enterohemorrhagic *Escherichia coli* strains belonging to three major serogroups: O157, O26, and O111. *Microbiol Immunol* 2010;54:569–77.
- Jansen R, Embden JD, Gastra W, Schouls LM. Identification of genes that are associated with DNA repeats in prokaryotes. *Mol Microbiol* 2002;43:1565–75.
- Johnson KE, Thorpe CM, Sears CL. The emerging clinical importance of non-O157 Shiga toxin-producing *Escherichia coli*. *Clin Infect Dis* 2006;43:1587–95.
- Joley KA, Feil EJ, Chan MS, Maiden MC. Sequence type analysis and recombinational tests (START). *Bioinformatics* 2001;17:1230–1.
- Karmali MA. Infection by verocytotoxin-producing *Escherichia coli*. *Clin Microbiol Rev* 1989;2:5–38.
- Keim P, Price LB, Klevytska AM, Smith KL, Schupp JM, Okinaka R, Jackson PJ, Hugh Jones ME. Multiple-locus variable-number tandem repeat analysis reveals genetic relationships within *Bacillus anthracis*. *J Bacteriol* 2000;182:2928–36.
- Keys C, Kemper S, Keim P. Highly diverse variable number tandem repeat loci in the *E. coli* O157:H7 and O55:H7 genomes for high-resolution molecular typing. *J Appl Microbiol* 2005;98:928–40.
- Larkin MA, Blackshields G, Brown NP, Chenna R, McGettigan PA, McWilliam H, Valentin F, Wallace IM, Wilm A, Lopez R, Thompson JD, Gibson TJ, Higgins DG. Clustal W and Clustal X version 2.0. *Bioinform Appl Note* 2007;23:2947–8.
- Lindstedt BA, Heir E, Gjernes E, Vardund T, Kapperud G. DNA fingerprinting of Shiga-toxin producing *Escherichia coli* O157 based on Multiple-Locus Variable-Number Tandem-Repeats Analysis (MLVA). *Ann Clin Microbiol Antimicrob* 2003;2:12.
- Lindstedt BA, Vardund T, Aas L, Kapperud G. Multiple-locus variable number tandem-repeats analysis of *Escherichia coli* O157 using PCR multiplexing and multicolored capillary electrophoresis. *J Microbiol Methods* 2004;58:213–22.
- Lindstedt BA, Thorstensen Brandal L, Aas L, Vardund T, Kapperud G. Study of polymorphic variable-number of tandem repeats loci in the ECOR collection and in a set of pathogenic *Escherichia coli* and *Shigella* isolates for use in a genotyping assay. *J Microbiol Methods* 2007;69:197–205.

Table 2

Comparison of the number of profiles using 7 or 10 VNTR loci.

Serotypes	Number of profiles		Increase in the number of profiles
	MLVA _{G7}	MLVA _{G10}	
O8:H16 (n = 2)	1	1	No
O8:H19 (n = 9)	5	5	No
O79:H19 (n = 2)	1	1	No
O113:NM (n = 10)	2	2	No
O117:H7 (n = 4)	3	4	Yes
O171:NM (n = 2)	1	2	Yes
O174:H21 (n = 6)	3	3	No
O178:H19 (n = 5)	3	3	No
ONT:H7 (n = 5)	3	5	Yes
ONT:H19 (n = 2)	1	2	Yes

Serotypes in which all isolates could be discriminated by MLVA_{G7} are not shown.

- Løbersli I, Haugum K, Lindstedt B. Rapid and high resolution genotyping of all *Escherichia coli* serotypes using 10 genomic repeat-containing loci. *J Microbiol Methods* 2012;88:134–9.
- Lucchesi PMA, Krüger A, Parma AE. Distribution of *Saa* gene variants in verocytotoxigenic *Escherichia coli* isolated from cattle and food. *Res Microbiol* 2006;157:263–6.
- Manges AR, Tellis PA, Vincent C, Lifeso K, Geneau G, Reid-Smith RJ, Boerlin P. Multi-locus variable number tandem repeat analysis for *Escherichia coli* causing extraintestinal infections. *J Microbiol Methods* 2009;79:211–3.
- Miko A, Lindstedt BA, Brandal LT, Løbersli I, Beutin L. Evaluation of multiple-locus variable number of tandem-repeats analysis (MLVA) as a method for identification of clonal groups among enteropathogenic, enterohaemorrhagic and avirulent *Escherichia coli* O26 strains. *FEMS Microbiol Lett* 2010;303:137–46.
- Mojica FJM, Díez-Villaseñor C, Soria E, Juez G. Biological significance of a family of regularly spaced repeats in the genomes of Archaea, Bacteria and mitochondria. *Mol Microbiol* 2000;36:244–6.
- Naseer U, Olsson- Liljequist BE, Woodford N, Dhanji H, Canto R, Sundsfjord A, Lindstedt BA. Multi-locus variable number of tandem repeat analysis for rapid and accurate typing of virulent multidrug resistant *Escherichia coli* clones. *PlosOne* 2012; 7: e 41232.
- Nataro JP, Kaper JB. Diarrheagenic *Escherichia coli*. *Clin Microbiol Rev* 1998;11: 142–201.
- Noller AC, McEllistrem MC, Pacheco AG, Boxrud DJ, Harrison LH. Multilocus variable-number tandem repeat analysis distinguishes outbreak and sporadic *Escherichia coli* O157:H7 isolates. *J Clin Microbiol* 2003;41:5389–97.
- Noller AC, McEllistrem MC, Harrison LH. Genotyping primers for the fully automated multilocus variable-number tandem repeat analysis of *Escherichia coli* O157:H7. *J Clin Microbiol* 2004;42:3908.
- Noller AC, McEllistrem MC, Shutt KA, Harrison LH. Locus-Specific Mutational Events in a multilocus variable-number tandem repeat analysis of *Escherichia coli* O157:H7. *J Clin Microbiol* 2006;44:374–7.
- Parma AE, Sanz ME, Blanco JE, Blanco J, Viñas MR, Blanco M, Padola NL, Etcheverría AI. Virulence genotypes and serotypes of verotoxigenic *Escherichia coli* isolated from cattle and foods in Argentina. Importance in public health. *Eur J Epidemiol* 2000;16: 57–62.
- Rivas M, Sosa-Estani S, Rangel J, Caletti MG, Vallés P, Roldán CD, Balbi L, Marsano de Mollar MC, Amoedo D, Miliwebsky E, Chinen I, Hoekstra RM, Mead P, Griffin PM. Risk factors for sporadic Shiga toxin-producing *Escherichia coli* infections in children, Argentina. *Emerg Infect Dis* 2008;14:763–71.
- Sanz ME, Villalobo C, Elichiribehety E, Arroyo GH. Prevalencia de *Escherichia coli* verotoxigenico en productos cárnicos de la ciudad de Tandil. *La Industria Cárnica Latinoamericana* 2007;146:56–8.
- Tarr PI. *Escherichia coli* O157:H7: clinical, diagnostic, and epidemiological aspects of human infection. *Clin Infect Dis* 1995;20:1–10.