

This is an open-access article distributed under the terms of the Creative Commons Attribution License, which permits unrestricted use, distribution, and reproduction in any medium, provided the original author(s) and source are credited.



ISSN: 2157-7633

Journal of Stem Cell Research & Therapy

The International Open Access
Journal of Stem Cell Research & Therapy

Editor-in-Chief

Marek Malecki, MD, PhD

Phoenix Biomolecular Engineering Foundation, San Francisco, CA, USA
E-mail: mm@pbmef.org; Tel: 4157134370; Fax: 4157134371; Skype:
mm_pbmef

Executive Editors

Jianlong Wang, PhD

Mount Sinai School of Medicine, New York, NY, USA

Evan Yale Snyder, MD, PhD

Sanford-Burnham Medical Research Institute, La Jolla, CL, USA

Fazlul Hoque Sarkar, PhD

Wayne State University School of Medicine, USA

LuZhe Sun, PhD

University of Texas Health Science Center, USA

Available online at: OMICS Publishing Group (www.omicsonline.org)

This article was originally published in a journal by OMICS Publishing Group, and the attached copy is provided by OMICS Publishing Group for the author's benefit and for the benefit of the author's institution, for commercial/research/educational use including without limitation use in instruction at your institution, sending it to specific colleagues that you know, and providing a copy to your institution's administrator.

All other uses, reproduction and distribution, including without limitation commercial reprints, selling or licensing copies or access, or posting on open internet sites, your personal or institution's website or repository, are requested to cite properly.

Digital Object Identifier: <http://dx.doi.org/10.4172/2157-7633.1000227>



Mesenchymal Stem Cell Therapy in Type 1 Diabetes Mellitus and Its Main Complications: From Experimental Findings to Clinical Practice

Marcelo Ezquer¹, Martha Arango-Rodriguez¹, Maximiliano Giraud-Billoud^{1,2} and Fernando Ezquer^{1*}

¹Center for Regenerative Medicine, School of Medicine, Clinica Alemana Universidad del Desarrollo, Santiago, Chile

²Laboratory of Physiology (Institute of Histology and Embryology, National Research Council) and Institute of Physiology, School of Medicine, Universidad Nacional de Cuyo, Mendoza, Argentina

Abstract

Type 1 diabetes mellitus (T1DM) is a complex multifactorial disorder which involves a loss of self-tolerance leading to the autoimmune destruction of pancreatic β -cells. Exogenous insulin administration cannot mimic precise pancreatic β -cell regulation of glucose homeostasis, thereby leading to severe long-term complications. Pancreas or islet transplant only provides partial exogenous insulin independence and induces several adverse effects, including increased morbidity and mortality. The scientific community and diabetic patients are thus, still waiting for an effective therapy which could preserve the remaining β -cells, replenish islet mass and protect newly-generated β -cells from autoimmune destruction.

Mesenchymal stem cells (MSCs) have been envisioned as a promising tool for T1DM treatment over the past few years, since they could differentiate into glucose-responsive insulin-producing cells. Their immunomodulatory and pro-angiogenic roles can be used to help arrest β -cell destruction, preserve residual β -cell mass, facilitate endogenous β -cell regeneration and prevent disease recurrence, thereby making them ideal candidates for the comprehensive treatment of diabetic patients.

This review focuses on recent pre-clinical data supporting MSC use in regenerating β -cell mass and also in treating several T1DM-associated complications. Clinical trial results and the ongoing obstacles which must be addressed regarding the widespread use of such therapy are also discussed.

Keywords: Mesenchymal stem cells; Type 1 diabetes mellitus; Diabetic complications; Clinical practice; Therapy

Introduction

Type 1 diabetes mellitus (T1DM) is a devastating chronic metabolic disease whose incidence has been rising at alarming rates during the last decade [1]. T1DM pathophysiology has been clearly related to an innate immune system defect resulting in a loss of self-tolerance, leading to the destruction of pancreatic β -cells by self-reactive-T-lymphocytes [2]. Standard T1DM patients' care strategies are based on the ongoing monitoring of food intake and continuous insulin prophylaxis. Nevertheless, endogenous insulin production and secretion are highly sensitive to minute-by-minute changes in blood glucose levels. Exogenous insulin injections thus do not represent a definitive cure for T1DM since they cannot mimic precise β -cell glucose homeostasis regulation. It must be stated that, even when being treated, T1DM patients develop severe long-term complications which clearly reduce their life-expectancy [3,4].

Around 1,300 T1DM patients receive pancreas or β -pancreatic islet transplants from cadaveric donors each year in the USA as an alternative to insulin administration [5]. Around 80% of transplant recipients can become insulin injection free for a five-year period [6,7], thereby indicating that a cure for T1DM is possible through β -cell mass replenishment; however, the demand for organs exceeds their availability [8]. Transplanted patients have to undergo life-long nonspecific immunosuppressive regimens to avoid transplanted organs becoming rejected and thus hindering this therapy's widespread use [9]. Such difficulties have led researchers to search for other sources of glucose-responsive insulin-producing cells; strategies based on different types of stem cell seem to be the most promising ones to date [10].

Mesenchymal Stem Cells for Regenerating Pancreatic β -Cell Mass

The main challenge for successful stem cell therapy to treat

T1DM lies in producing functional β -cells and overcoming the autoimmune response. In theory, β -cell mass and function could be preserved and/or restored in at least three different ways: replacing damaged β -cells by direct stem cell differentiation, modifying the pancreatic microenvironment allowing endogenous β -cell regeneration and abrogating the autoimmune response to β -cells. Multipotent mesenchymal stromal cells (also referred to as mesenchymal stem cells -MSCs), a heterogeneous adult stem cell population, seems to represent an ideal tool, since they can be easily isolated from bone-marrow and other mesenchymal tissue, like adipose tissue, dental pulp, placenta, Wharton's jelly and umbilical cord, and rapidly expanded *ex vivo* [11,12]. MSCs are hypo-immunogenic, allowing allogeneic transplant without histocompatibility or recipient conditioning being required [13]. When MSCs are systemically administered they can selectively migrate and engraft in damaged tissue [14] and differentiate into insulin-producing cells [15,16]. As immunomodulatory cells, MSCs can limit inflammation in damaged tissue [17], produce a broad range of trophic factors protecting parenchymal cells from dying by apoptosis and promote the proliferation and differentiation of endogenous precursors [18]. MSCs have been transplanted into over 1,000 human

***Corresponding author:** Fernando Ezquer, Center for Regenerative Medicine, School of Medicine, Clinica Alemana Universidad del Desarrollo, Av. Las Condes 12,438, Lo Barnechea, Santiago, Chile, 7710162, Tel: 56-2-2327 9425; E-mail: eezquer@udd.cl

Received July 11, 2014; Accepted August 21, 2014; Published August 23, 2014

Citation: Ezquer M, Arango-Rodriguez M, Giraud-Billoud M, Ezquer F (2014) Mesenchymal Stem Cell Therapy in Type 1 Diabetes Mellitus and Its Main Complications: From Experimental Findings to Clinical Practice. J Stem Cell Res Ther 4: 227. doi:10.4172/2157-7633.1000227

Copyright: © 2014 Ezquer M, et al. This is an open-access article distributed under the terms of the Creative Commons Attribution License, which permits unrestricted use, distribution, and reproduction in any medium, provided the original author and source are credited.

patients suffering different diseases, providing beneficial effects without inducing major toxicity [19-21].

Replacing pancreatic β -cells by direct differentiation

One approach to produce more β -cells has involved differentiating MSCs into functional β -cells. Hisanaga et al., have shown that a simple protocol can induce murine bone marrow-derived MSC differentiation into insulin-secreting cells [22]; the differentiated cells contained insulin-secreting granules and secreted mature insulin after glucose stimulation. Such cells reduced blood glucose levels when they were transplanted into diabetic mice [22]. Zhang et al., have demonstrated that human bone marrow-derived MSCs could differentiate into pancreatic islet-like cell clusters when following a more complex four-step induction protocol [23]. Differentiated cells have expressed a broad pancreatic β -cell genetic profile, released high levels of insulin in response to glucose stimulation *in vitro* and reduced blood glucose levels when transplanted to streptozotocin (STZ)-induced diabetic mice [23].

Other studies have proved that human adipose-derived MSCs have been able to adopt a pancreatic endocrine cell phenotype *in vitro* [24,25]; differentiated cells co-expressing insulin, glucagon and somatostatin reduced blood glucose levels within two weeks when they were transplanted into STZ-induced diabetic mice [24,25]. Similar results have been obtained with MSCs isolated from dental pulp [26], placenta [27], Wharton's jelly [28] and umbilical cord [29], suggesting that such therapeutic effect could be a common property for any type of MSCs.

Some other reports have suggested that MSC differentiation into insulin-secreting cells could also be achieved *in vivo* [15,30,31]; transplanting undifferentiated bone marrow-derived MSCs into diabetic mice in these studies increased insulin levels and reduced hyperglycaemia. The authors found that some transplanted cells homed to pancreatic injury sites when analysing receptor mouse pancreatic tissue and that they differentiated into insulin-positive cells [15,30,31]. However, such cell lineage switch has still to be confirmed, since several other laboratories have reported that MSCs infused into diabetic mice lowered blood glucose level and increased β -cell mass but they could not differentiate into β -cells [32,34].

Furthermore, while proof of concept has demonstrated that MSCs can differentiate into insulin-secreting cells (at least *in vitro*), such an approach is limited by an inability to achieve a fully-differentiated β -cell phenotype, the relatively low amount of insulin secreted *in vivo* and inefficacy in rapidly adapting to day-to-day physiological requirements. The scientific community is thus still searching for a well-defined and reproducible condition enabling this target to be achieved (i.e. to provide a clinically-relevant β -cell mass compatible with transplants in humans).

Modifying the pancreatic microenvironment to allow endogenous regeneration of pancreatic β -cells

It is well-known that β -cell mass increases markedly during development and can also proliferate postnatally in response to situations involving increased metabolic demand, such as obesity and pregnancy [35]. Significant regeneration of pancreatic tissue, including β -cells, has also been shown in adult mice and rats following 70% pancreatectomy [36,37].

Several studies have shown that existing β -cells' self-duplication and pancreatic ductal cell differentiation are the main mechanisms by

which pancreatic β -cells could be replenished in rodents and humans [36,38,39]. Thus, stimulating β -cell replication or local precursor differentiation could provide a promising alternative by which diabetic patients' β -cell mass could become restored.

It is well-known that MSCs secrete a broad range of bioactive growth factors in their vicinity (i.e. VEGF, bFGF, IGF, HGF and EGF) [18]. Therefore, MSCs could provide trophic support for injured tissue by modifying the microenvironment to induce local precursor proliferation and differentiation, improve damaged tissue irrigation and prevent parenchymal cell apoptosis [18,40]. Hess et al., have shown that transplantation of bone marrow-derived cells has increased insulin levels in diabetic mice and reduced their hyperglycaemia [41]. A careful histological analysis of these animals' pancreases has shown that transplanted cells homed to the pancreatic injury site and promoted endogenous pancreatic regeneration, probably by secreting trophic factors [41]. These results have also been replicated in another study showing that newly-produced β -cells were in close vicinity to donor MSCs, suggesting that the cells so administered were involved in pancreatic progenitor cell proliferation and differentiation [42].

Our group has recently reported that intravenous injection of bone marrow-derived MSCs into diabetic mice has increased EGF plasmatic and pancreatic levels [33]. It has been reported that transgenic expression of EGF in the pancreas enhances β -cell proliferation and differentiation [43] and combined EGF and gastrin treatment has increased β -cell mass in diabetic rodents due to neogenesis from pancreatic duct cells [44,45].

Adipose-derived MSCs represent a very promising approach to diabetes since they are endowed with a large number of bioactive mediators, such as leptin, adiponectin and visfatin, which are known to regulate glucose homeostasis [46]. The secretion of the aforementioned growth factors could thus create a tissue microenvironment assisting endogenous β -cell regeneration and damaged islet revascularisation. However, most work to date has been carried out on rodents and islet architecture and niches are highly variable among different species [47]; thus, whether this could happen in humans remains unknown.

β -cell regeneration in humans has been suggested by observing residual β -cells in T1DM patients after onset [48] or even many years after diagnosis [49]; nevertheless, it remains unclear whether residual β -cells or the remaining endogenous precursors could be stimulated to a mass great enough to control glycaemia.

Abrogating autoimmunity to pancreatic β -cells

Although the circumstances initiating T1DM have not been fully understood, growing evidence has shown the deregulation of innate and adaptive immune system components [50]. It has been shown that diabetes develops by dendritic cell and macrophage invasion of the pancreas, followed by CD4 and CD8 T-lymphocyte, natural killer (NK) cell and B-lymphocyte infiltration [50]. β -cell death during the course of inflammation is probably mediated by direct contact with activated macrophages and self-reactive T-lymphocytes and by exposure to soluble mediators secreted by these cells, including pro-inflammatory cytokines, nitric oxide and oxygen free radicals [51].

Following the identification of the disease's autoimmune aetiology, several immunosuppressive agents have been evaluated for preventing and/or reverting pancreatic β -cell destruction (reviewed by Waldron-Lynch et al. [52]). Such studies have shown that some patients experienced short periods of normoglycaemia without insulin treatment [52]; nevertheless, immunosuppressive drugs' chronic toxicity, a loss of

metabolic benefit after the withdrawal of immunosuppressive agents and a failure to induce a tolerant state have limited such therapies' routine use [53].

MSCs may thus prove to be useful in treating autoimmune diseases, such as T1DM, owing to their immunosuppressive and anti-inflammatory properties which could promote immunological tolerance [33,54]. MSCs have a wide range of immunomodulatory features as they can secrete anti-inflammatory cytokines and form cell-to-cell inhibitory interactions [54,55]; they can also affect dendritic cell function by inhibiting monocyte precursor differentiation [56]. MSCs thus indirectly limit NK and T-cell expansion and cytotoxic activity and also promote the appearance of regulatory T-lymphocytes, inducing antigen-specific tolerance [57].

Some studies have shown that injecting MSCs into diabetic rodents has successfully returned plasma glucose values to normal levels and increased β -cell mass [33,58-61]; they have also shown that MSCs have significantly suppressed β -cell specific T-cell proliferation in the pancreas and increased pancreatic regulatory T-cell levels. Endogenous β -cell regeneration may thus be attributable to MSC immunomodulatory properties, which could protect newly-formed β -cells from destruction by T-lymphocytes, thereby re-establishing peripheral tolerance toward β -cells.

Regarding MSC ability to migrate to damaged tissue [62], Sordi et al., have reported that the release of several chemokines by damaged pancreatic islets attracted human MSCs expressing several chemokine receptors [63]; once MSCs have been transplanted, they migrate to pancreatic islets where they can be detected for up to several weeks later [63]. Interestingly, both Fiorina et al., and our group have shown murine MSC preferential migration to secondary lymphoid organs, including pancreatic lymphoid nodes, thereby suggesting that such homing ability could be crucial in modulating an immune response [33,58]. Nevertheless, MSCs could also modulate autoimmunity from distant sites because it has been reported that MSCs embolised in the lungs improve myocardial infarction by releasing anti-inflammatory factors [64].

MSC Administration in Treating Diabetic Complications

Chronic hyperglycaemia in diabetic patients leads to various metabolic alterations, inducing several secondary complications which are responsible for major morbidity and mortality [3]. This has prompted investigators to analyse the effect of using MSCs on glycaemic control and to evaluate its therapeutic effects regarding to secondary complications such as microvascular complications, including nephropathy, retinopathy, and neuropathy and wound healing which have been the main targets for several types of therapy involving MSCs.

MSC-related therapy for diabetic nephropathy

Diabetic nephropathy (DN) is now the most common cause of end-stage renal failure in Western countries and the major cause of mortality in T1DM patients [65,66]. It is a multifactorial and multistage disease which is characterised by a progressive increase in albuminuria, hypertension and a decline in glomerular filtration rate [67]. It has been proposed that pathophysiological mechanisms act jointly in all renal compartments (tubulointerstitium, glomeruli and vessels), thereby leading to characteristic histological abnormalities, including mesangial cell proliferation and hypertrophy, thickening of glomerular basement membrane, podocyte loss and interstitial inflammation with fibrosis [68].

Different cells interact together to enable the kidneys to fulfil their physiological role; MSCs can differentiate, regenerate and/or protect mesangial cells [69], tubular epithelial cells [70,71], endothelial cells [72,73] and podocytes [74,75]. However, the diabetic microenvironment negatively influences MSC differentiation, proliferation, survival and homing, essentially through the effect of AGE accumulation and inflammatory mediators [76,77]. Although MSCs have been described as being renoprotective [78], engraftment frequency is scarce, suggesting that transplanted cells secrete paracrine molecules which could mediate kidney recovery [79,80].

Several pre-clinical studies using immune compromised NOD/SCID mice or STZ-induced T1DM models have shown that injecting MSCs has reduced DN progression, shown by reduced albuminuria (functional marker) and improved renal histology (structural marker) [59,81-85]. Renoprotection has been achieved without hyperglycaemia normalisation in some of these studies, thereby inferring that the therapeutic effect involved the direct MSCs action on the kidneys [81,84]. Recent studies have tried to highlight the intrinsic mechanisms involved in MSC renoprotective potential; research to date has shown that these cells essentially act through regulating oxidative stress [86], protecting podocytes from injury [83,87] and reducing inflammation and fibrosis [84,88].

The available animal models' major limitation is that they only mimic the earlier stages of DN; the impact of MSC administration on diabetic individuals exhibiting advanced signs of diabetic kidney disease thus remains unproven.

MSC-related therapy for diabetic retinopathy

Diabetic retinopathy (DR) is the leading cause of irreversible vision loss in developed countries [89]. DR prevalence in T1DM patients in the Western world is around 28% [90] and increases dramatically with DM progression; hence, almost all T1DM patients will have a degree of DR after 20 years of DM evolution [91]. The earliest morphological change observed during the initial stages of DR is a reduced amount of pericytes in retinal capillaries [92]; this is followed by the formation of acellular-occluded capillaries, occasional micro-aneurysms, increased leukostasis and the thickening of the vascular basement membrane [93]. Such alterations progressively affect retinal microvessel integrity leading to increased vascular permeability and swelling (non-proliferative retinopathy). Further vessel deterioration during advanced stages of the disease results in poor blood flow and ischaemia, leading to the formation of new abnormal blood vessels, widespread haemorrhage and loss of vision (proliferative retinopathy) [94]. It has been well-documented that a hyperglycaemic state also affects the entire neurosensory retina, accelerates neuronal apoptosis and activates glial supporting cells, leading to reduced colour and contrast sensitivity during the early stages of the disease [95].

There is growing evidence that local inflammation and oxidative stress play pivotal roles during early and late stages of DR [96,97], thereby inducing pericyte and neuronal degeneration. MSCs could thus have a great impact on DR treatment since they can act as immunomodulatory agents and reactive oxygen species (ROS) scavengers [98]. Furthermore, due to striking similarities between MSCs and pericytes, MSCs might replace the latter, thereby compensating for pericyte loss [99]; Mendel et al., and Rajashekhar et al., have shown that adipose-derived MSCs intravitreally injected into diabetic mice were able to migrate and integrate into the retinal vasculature, leading to microvascular stabilisation and a marked reduction in capillary dropout [100,101].

Another study has shown that intravenous injection of human

adipose-derived MSCs into rats having established DR has led to improved blood retinal barrier integrity [102]; some donor cells differentiated into photoreceptor or astrocyte-like cells inside the retina of these rats [102]. A single intravitreal injection of placental-derived MSCs into diabetic rats has also resulted in a significant decrease in retinal cell apoptosis, such effect being related to increased intravitreal concentration of several neuroprotective growth factors [103].

The major limitation of available DN animal models is that they only mimic the earlier stages of DR (non-proliferative retinopathy) due to their reduced lifespan [104]; the impact of injecting MSCs into individuals exhibiting advanced signs of DR thus remains unverified.

MSC-related therapy for diabetic polyneuropathy

Diabetic polyneuropathy (DPN) is a peripheral nervous system disorder affecting up to 60% of long-standing T1DM patients [105]; DPN patients have decreased quality of life due to chronic pain, loss of sensation in different parts of the body and chronic wounds leading to amputation [105]. The most relevant pathological findings concerning diabetic patients have included axonal atrophy, demyelination, and nerve fibre loss, reduced nerve blood flow and impaired nerve regeneration [106]. Several mechanisms have currently been proposed for linking chronic hyperglycaemia to DPN [107]; one of the main factors is the production of oxidative stress due to altered glucose metabolism. ROS accumulation increases lipid peroxidation, induces DNA and protein damage, induces cellular apoptosis and reduces nerve blood flow [108]; ROS accumulation also leads to increased expression of several genes involved in inflammatory reactions and neuronal dysfunction [109]. MSCs could thus represent an excellent therapeutic option due to their ability to act as ROS scavenger and secrete several anti-inflammatory, neurotrophic and vasculogenic factors which could promote neuron survival and the repair of damaged nerves [18,110].

Two recent studies have shown that the injection of bone marrow-derived MSCs into diabetic mice's hind limb muscles has increased several neurotrophic factor expression levels and ameliorated nerve conduction deficit [111,112]. Transplanted cells were located around the vasa nervorum in these studies and improved its vascularity. Shibata et al., have shown that intramuscular MSC injection into diabetic mice has led to the production of pro-angiogenic factors (bFGF and VEGF) and this was associated with an increased ratio between capillaries and muscular fibres, followed by increased blood flow to the nerves, improved motor nerve conduction speed and reduced hyperalgesia [113]. To our knowledge, there have been no reports showing MSC differentiation into neural cells in diabetic mice, suggesting the secretion of neurotrophic and pro-angiogenic factors as the main mechanisms associated with such potential therapeutic effect.

MSC-related therapy for diabetic wounds

Chronic skin ulcers represent one of the most serious pathological consequences of diabetes; they are characterised by a loss of epidermal and dermal tissue [114]. About 10% to 25% of T1DM patients develop diabetic foot ulcers during their lifetime, representing a major factor contributing to amputation in these patients [115].

Around 50% of diabetic wounds are resistant to current therapies, even including the best available treatment involving chemicals, dressings and skin grafts [116]. Diabetic wound healing deficiency can be attributed to critical factors such as reduced peripheral blood flow and impaired growth factors and cytokine release by local fibroblasts and inflammatory cells, leading to a reduction in angiogenesis [117].

MSCs have been used to date in treating different skin disorders [20,118,119]; several groups have reported successful wound healing in pre-clinical models of diabetic wounds after the administration of autologous or allogeneic MSCs from different sources [120-123]. Wounds treated with MSCs in these reports have shown a qualitative improvement regarding histological characteristics, such as superior rete ridge architecture, multi-layered structure, improved dermal-epidermal junction and the formation of new skin appendage structures, such as hair follicles and sebaceous glands [120-123].

Although the mechanisms by which MSCs ameliorate skin damage have been the subject of debate for years, two theories currently offer explanations for these cells' therapeutic effects: bioactive soluble factor production (growth factors, cytokines and specific proteins) or their differentiation into dermal and epidermal cells [124,125]. Nevertheless, most studies agree that although MSCs can migrate to injury sites in response to chemotactic signals *in vivo* [126,127], only a small percentage of engrafted MSCs actually become incorporated and survive within damaged tissue [128]. On the other hand, other studies have revealed that transplanted MSCs do not necessarily have to be in close proximity to damaged tissue to promote wound repair and functional recovery, thereby suggesting that paracrine factor secretion is the main MSC therapeutic action concerned in repairing skin disorders [129,130]. This theory has been further reinforced by recent studies which have shown that allogeneic MSCs-conditioned medium has enhanced healing when administered locally into wounds [121,122,131-134].

Antibody-based protein array assays have shown that MSCs-conditioned medium contains most of the 79 human cytokines. Successful wound healing is particularly related to the secretion of trophic factors, such as VEGF, IGF-1, bFGF, PDGF-BB, Ang-1, SDF-1, EGF, KGF and MMP9, or cytokines, such as TGF- β , IL6 and IL8. These could contribute towards wound repair and skin regeneration by suppressing inflammation, angiogenesis and stimulating skin stem cell proliferation and differentiation into new keratinocytes [123,131,135-138].

Mscs: From Preclinical Data to Clinical Practice

Despite the large amount of preclinical data supporting a therapeutic role for MSCs in β -cell mass regeneration and treating diabetic complications, few clinical trials have involved using MSCs in T1DM patients. In one such trial, Haller et al. studied the safety and efficacy of MSC-containing autologous cord blood infusion concerning DM in children. This trial recruited T1DM patients shortly after the onset of disease whose autologous cord blood was stored in private banks. There were no significant adverse effects, suggesting that cord blood infusion was feasible and safe in the aforementioned conditions [139]. The patients treated had increased peripheral regulatory T-cell level and reduced insulin requirement six months after cord blood infusion, compared to children who just received insulin therapy [139]. Nevertheless, the therapeutic effect disappeared two years after cell infusion; no patient thus achieve long-term preservation of the remaining β -cell mass [140].

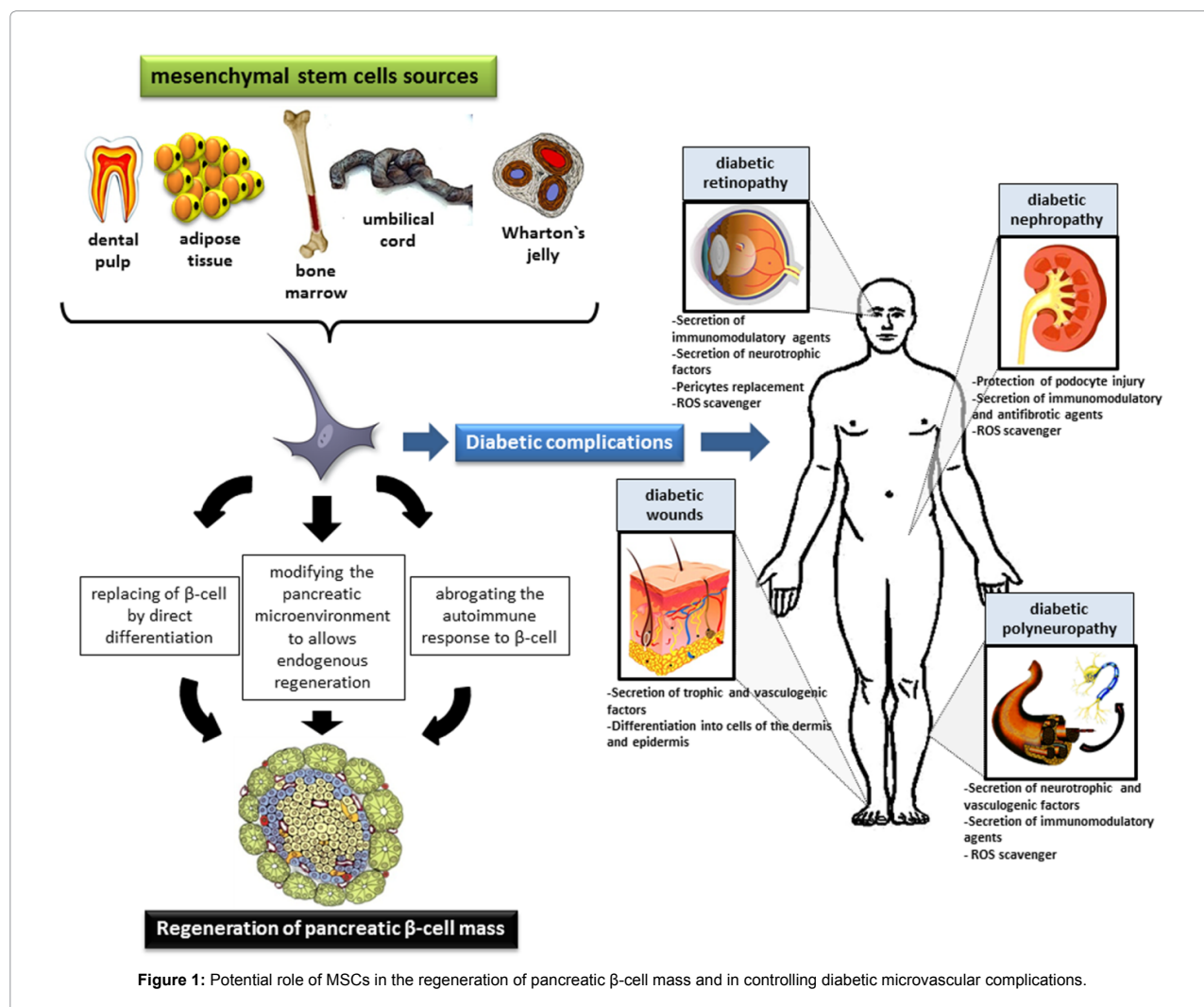
The concept of immunomodulation by cord blood-derived MSCs was recently taken up by Zhao et al., who developed a novel process for re-educating patients' lymphocytes through co-culturing with allogeneic MSCs [141]. This device consisted of a stack of Petri dishes containing cord blood-derived MSCs functioning as part of a closed-loop system that circulates the patient's blood through a blood cell separator, briefly co-cultured a patient's lymphocytes with MSCs

in vitro and returned the lymphocytes to the patient's circulation. In this setting, through secreted and cell-surface signalling molecules, the MSCs educated the lymphocytes passing through the device. Results from this trial highlighted the fact that such treatment led to a clinically-relevant improvement in T1DM patient's metabolic control (increased C peptide levels and reduced daily insulin requirement in T1DM patients having or lacking residual β -cell mass), which lasted for months following a single treatment [141]. However, post-treatment observations regarding a larger number of patients covering a longer period of time are needed for evaluating whether the aforementioned therapeutic effects could be maintained for a longer period than that involved in the aforementioned study.

Hu et al. reported the results of a randomised controlled trial in another study aiming to evaluate the long-term effects of injecting Wharton's jelly-derived MSCs for new-onset T1DM patients. Treated T1DM patients had better glycaemic control and increased C peptide levels after two years' follow-up compared to individuals having the same age, diabetes' duration and receiving intensive insulin therapy [142]. A few more trials involving the administration of MSCs to

T1DM patients to induce β -cell mass regeneration are ongoing. One of them has involved the use of allogeneic bone marrow-derived MSCs (Prochymal, a commercial formulation consisting of human MSCs harvested from healthy volunteer donors) for determining whether MSCs could halt autoimmunity progression and restore glycaemic control in newly-diagnosed T1DM patients (NCT00690066) whilst other studies have involved recruiting T1DM patients for evaluating the efficacy of transplanting autologous bone marrow-derived MSCs (NCT01157403 and NCT02057211) or autologous adipose-derived MSCs (NCT00703599). Regarding diabetic complications, one recruiting clinical trial is actively investigating MSC safety and efficacy in diabetic nephropathy (IRCT201111291414N28) and, concerning diabetic wounds, two studies have been completed with bone marrow-derived MSCs regarding ulcers in diabetic patients suffering critical limb ischemia (NCT00955669 and NCT01065337) whilst other is ongoing regarding umbilical cord-derived MSCs for diabetic foot (NCT01216865).

Our group considers that the paucity of clinical trials carried out to date has been related to remaining concerns regarding cell



therapy strategies which still need to be addressed. The effectiveness of a patient's own cells needs to be evaluated, considering that MSCs derived from diabetic subjects may have reduced therapeutic potential [77]; experiments involving the use of autologous cells are necessary for addressing this concern. Cell therapy's long-term effects must be tested; given that T1DM and diabetic complications progress over a long period of time, a single administration of MSCs may not be enough to maintain any therapeutic effect over a long period of time. Furthermore, since stem cells are being used on human patients, safety is an especially relevant concern regarding tumour induction through spontaneous malignant transformation of MSCs or by promoting tumour development and growth. Compared to other types of stem cell (embryonic stem cells or induced pluripotent stem cells), MSCs have a better biosafety profile and lower risk of tumorigenicity [143]. Cultured MSCs have usually shown progressive senescence and growth arrest without tumour formation [144]; however, such cells may still acquire genetic abnormalities and become tumorigenic *in vivo* due to the many rounds of replication which they undergo before being transplanted into patients [145]. In this sense, Jeong et al. found that the transplantation of bone marrow-derived MSCs into STZ-induced diabetic mice frequently induced tumour formation at the injection site [146]. One way of circumventing this problem has been to encapsulate cells within a barrier allowing the diffusion of nutrients but not larger molecules, antibodies or cells; encapsulation can be configured using many different polymers, methods and sizes [147] and has the theoretical advantage of protecting cells from an immune attack but also avoiding the dissemination of potentially-oncogenic derivatives.

A better understanding of therapeutic mechanisms and careful assessment of the efficacy of clinical trials are also needed.

Conclusion

MSCs have been shown to have the potential for revolutionising the treatment of many chronic diseases, including T1DM and its main complications. Progress made to date in understanding normal pancreas development has been crucial in formulating protocols aimed at directing MSC differentiation into insulin-producing cells *in vitro*. However, the feasibility and scalability of such attempts for achieving the final goal of large-scale β -cell replacement are still questionable; even with an abundant supply of MSCs-derived β -cells these will likely be targets for persistent autoimmune response in T1DM patients. Any efforts at replacing β -cells will thus require an additional approach for dealing with recurrent autoimmunity. MSC immunomodulatory properties are thus very useful since they could reduce self-reactive lymphocytes causing inflammatory damage to newly-formed β -cells. MSC ability to secrete trophic and angiogenic factors may also restrict islet damage by establishing a microenvironment which stimulates β -cell growth, survival and differentiation (Figure 1).

MSCs' beneficial roles could also be very useful in treating the main T1DM-associated complications where the reduction of parenchymal cells, inflammation and changes in the microenvironment are the main effectors concerning tissue damage, thereby making MSCs an effective tool for the comprehensive treatment of diabetic patients (Figure 1).

T1DM is undoubtedly a terrible, lifelong disease, involving substantial short-term and long-term complications. Insulin is fairly effective in combating it, albeit a cumbersome and imperfect therapy. Ongoing discussion thus concerns the level of risk doctors and patients are willing to accept in order to achieve a potential cure; it is expected

that any new therapeutic approach (including cell therapy) must be associated with a low-risk profile, especially when being considered for use in children. Regarding such decision, further clinical trials will be critical for evaluating whether clinical benefits motivate the risk of assuming adverse effects and which patients would be most suitable for this kind of therapy.

Even though considerable challenges lie ahead, ongoing advances in the field make an effective MSC-therapy for T1DM and its main complications a realistic goal for the near future.

Acknowledgement

We would like to thank Jason Garry and Melina Albornoz for editing the manuscript. This work was financed by FONDECYT through grant # 1130470 awarded to FE.

References

1. Tuomilehto J (2013) The emerging global epidemic of type 1 diabetes. *Current Diabetes Reports* 13: 795-804. [PubMed]
2. Mathis D, Vence L, Benoist C (2001) beta-Cell death during progression to diabetes. *Nature* 414: 792-798. [PubMed]
3. Brownlee M (2001) Biochemistry and molecular cell biology of diabetic complications. *Nature* 414: 813-820. [PubMed]
4. Coresh J, Astor BC, Greene T, Eknoyan G, Levey AS (2003) Prevalence of chronic kidney disease and decreased kidney function in the adult US population: Third National Health and Nutrition Examination Survey. *Am J Kidney Dis* 41: 1-12. [PubMed]
5. Leichtman AB, Cohen D, Keith D, O'Connor K, Goldstein M, et al. (2008) Kidney and pancreas transplantation in the United States, 1997-2006: the HRSA Breakthrough Collaboratives and the 58 DSA Challenge. *Am J Transplant* 8: 946-957. [PubMed]
6. Shapiro AM, Ricordi C, Hering BJ, Auchincloss H, Lindblad R, et al. (2006) International trial of the Edmonton protocol for islet transplantation. *N Engl J Med* 355: 1318-1330. [PubMed]
7. Ryan EA, Paty BW, Senior PA, Bigam D, Alfadhli E, et al. (2005) Five-year follow-up after clinical islet transplantation. *Diabetes* 54: 2060-2069. [PubMed]
8. Ming CS, Chen ZH (2007) Progress in pancreas transplantation and combined pancreas-kidney transplantation. *Hepatobiliary & Pancreatic Diseases International* 6: 17-23.
9. Harlan DM, Kenyon NS, Korsgren O, Roep BO (2009) Current advances and travails in islet transplantation. *Diabetes* 58: 2175-2184. [PubMed]
10. McCall MD, Toso C, Baetge EE, Shapiro AM (2010) Are stem cells a cure for diabetes? *Clin Sci (Lond)* 118: 87-97. [PubMed]
11. Deans RJ, Moseley AB (2000) Mesenchymal stem cells: biology and potential clinical uses. *Exp Hematol* 28: 875-884. [PubMed]
12. Hoogduijn MJ, Betjes MG, Baan CC (2014) Mesenchymal stromal cells for organ transplantation: different sources and unique characteristics? *Current Opinion in Organ Transplantation* 19: 41-46. [PubMed]
13. Chen PM, Yen ML, Liu KJ, Sytwu HK, Yen BL (2011) Immunomodulatory properties of human adult and fetal multipotent mesenchymal stem cells. *J Biomed Sci* 18: 49. [PubMed]
14. Chen J, Li Y, Katakowski M, Chen X, Wang L, et al. (2003) Intravenous bone marrow stromal cell therapy reduces apoptosis and promotes endogenous cell proliferation after stroke in female rat. *J Neurosci Res* 73: 778-786. [PubMed]
15. Ianus A, Holz GG, Theise ND, Hussain MA (2003) In vivo derivation of glucose-competent pancreatic endocrine cells from bone marrow without evidence of cell fusion. *J Clin Invest* 111: 843-850. [PubMed]
16. Vija L, Farge D, Gautier JF, Vexiau P, Dumitracu C, et al. (2009) Mesenchymal stem cells: Stem cell therapy perspectives for type 1 diabetes. *Diabetes Metab* 35: 85-93. [PubMed]
17. Rasmusson I (2006) Immune modulation by mesenchymal stem cells. *Exp Cell Res* 312: 2169-2179. [PubMed]
18. Caplan AI, Dennis JE (2006) Mesenchymal stem cells as trophic mediators. *J Cell Biochem* 98: 1076-1084. [PubMed]

19. Chen SL, Fang WW, Ye F, Liu YH, Qian J, et al. (2004) Effect on left ventricular function of intracoronary transplantation of autologous bone marrow mesenchymal stem cell in patients with acute myocardial infarction. *Am J Cardiol* 94: 92-95. [[PubMed](#)]
20. Conget P, Rodriguez F, Kramer S, Allers C, Simon V, et al. (2010) Replenishment of type VII collagen and re-epithelialization of chronically ulcerated skin after intradermal administration of allogeneic mesenchymal stromal cells in two patients with recessive dystrophic epidermolysis bullosa. *Cytotherapy* 12: 429-431. [[PubMed](#)]
21. Horwitz EM, Prockop DJ, Fitzpatrick LA, Koo WW, Gordon PL, et al. (1999) Transplantability and therapeutic effects of bone marrow-derived mesenchymal cells in children with osteogenesis imperfecta. *Nat Med* 5: 309-313. [[PubMed](#)]
22. Hisanaga E, Park KY, Yamada S, Hashimoto H, Takeuchi T, et al. (2008) A simple method to induce differentiation of murine bone marrow mesenchymal cells to insulin-producing cells using conophylline and betacellulin-delta4. *Endocr J* 55: 535-543. [[PubMed](#)]
23. Zhang Y, Shen W, Hua J, Lei A, Lv C, et al. (2010) Pancreatic islet-like clusters from bone marrow mesenchymal stem cells of human first-trimester abortus can cure streptozocin-induced mouse diabetes. *Rejuvenation Res* 13: 695-706. [[PubMed](#)]
24. Timper K, Seboek D, Eberhardt M, Linscheid P, Christ-Crain M, et al. (2006) Human adipose tissue-derived mesenchymal stem cells differentiate into insulin, somatostatin, and glucagon expressing cells. *Biochem Biophys Res Commun* 341: 1135-1140. [[PubMed](#)]
25. Chandra V, Swetha G, Muthyala S, Jaiswal AK, Bellare JR, et al. (2011) Islet-like cell aggregates generated from human adipose tissue derived stem cells ameliorate experimental diabetes in mice. *PLoS One* 6: e20615. [[PubMed](#)]
26. Kanafi MM, Rajeshwari YB, Gupta S, Dadheech N, Nair PD, et al. (2013) Transplantation of islet-like cell clusters derived from human dental pulp stem cells restores normoglycemia in diabetic mice. *Cytotherapy* 15: 1228-1236. [[PubMed](#)]
27. Kadam SS, Sudhakar M, Nair PD, Bhonde RR (2010) Reversal of experimental diabetes in mice by transplantation of neo-islets generated from human amnion-derived mesenchymal stromal cells using immuno-isolatory macrocapsules. *Cytotherapy* 12: 982-991. [[PubMed](#)]
28. Wu LF, Wang NN, Liu YS, Wei X (2009) Differentiation of Wharton's jelly primitive stromal cells into insulin-producing cells in comparison with bone marrow mesenchymal stem cells. *Tissue Eng Part A* 15: 2865-2873. [[PubMed](#)]
29. Tsai PJ, Wang HS, Shyr YM, Weng ZC, Tai LC, et al. (2012) Transplantation of insulin-producing cells from umbilical cord mesenchymal stem cells for the treatment of streptozotocin-induced diabetic rats. *J Biomed Sci* 19: 47. [[PubMed](#)]
30. Banerjee M, Kumar A, Bhonde RR (2005) Reversal of experimental diabetes by multiple bone marrow transplantation. *Biochem Biophys Res Commun* 328: 318-325. [[PubMed](#)]
31. Iskovich S, Goldenberg-Cohen N, Stein J, Yaniv I, Fabian I, et al. (2012) Elutriated stem cells derived from the adult bone marrow differentiate into insulin-producing cells in vivo and reverse chemical diabetes. *Stem Cells Dev* 21: 86-96. [[PubMed](#)]
32. Taneera J, Rosengren A, Renstrom E, Nygren JM, Serup P, et al. (2006) Failure of transplanted bone marrow cells to adopt a pancreatic beta-cell fate. *Diabetes* 55: 290-296. [[PubMed](#)]
33. Ezquer F, Ezquer M, Contador D, Ricca M, Simon V, et al. (2012) The antidiabetic effect of mesenchymal stem cells is unrelated to their transdifferentiation potential but to their capability to restore Th1/Th2 balance and to modify the pancreatic microenvironment. *Stem Cells* 30: 1664-1674. [[PubMed](#)]
34. Bell GI, Broughton HC, Levac KD, Allan DA, Xenocostas A, et al. (2012) Transplanted human bone marrow progenitor subtypes stimulate endogenous islet regeneration and revascularization. *Stem Cells Dev* 21: 97-109. [[PubMed](#)]
35. Desgraz R, Bonal C, Herrera PL (2011) beta-cell regeneration: the pancreatic intrinsic faculty. *Trends Endocrinol Metab* 22: 34-43. [[PubMed](#)]
36. Dor Y, Brown J, Martinez OI, Melton DA (2004) Adult pancreatic beta-cells are formed by self-duplication rather than stem-cell differentiation. *Nature* 429: 41-46. [[PubMed](#)]
37. Bonner-Weir S, Baxter LA, Schuppin GT, Smith FE (1993) A second pathway for regeneration of adult exocrine and endocrine pancreas. A possible recapitulation of embryonic development. *Diabetes* 42: 1715-1720. [[PubMed](#)]
38. Teta M, Rankin MM, Long SY, Stein GM, Kushner JA (2007) Growth and regeneration of adult beta cells does not involve specialized progenitors. *Dev Cell* 12: 817-826. [[PubMed](#)]
39. Gmyr V, Kerr-Conte J, Belaich S, Vandewalle B, Leteurtre E, et al. (2000) Adult human cytokeratin 19-positive cells reexpress insulin promoter factor 1 in vitro: further evidence for pluripotent pancreatic stem cells in humans. *Diabetes* 49: 1671-1680. [[PubMed](#)]
40. Phinney DG, Prockop DJ (2007) Concise review: mesenchymal stem/multipotent stromal cells: the state of transdifferentiation and modes of tissue repair-current views. *Stem Cells* 25: 2896-2902. [[PubMed](#)]
41. Hess D, Li L, Martin M, Sakano S, Hill D, et al. (2003) Bone marrow-derived stem cells initiate pancreatic regeneration. *Nat Biotechnol* 21: 763-770. [[PubMed](#)]
42. Hasegawa Y, Ogihara T, Yamada T, Ishigaki Y, Imai J, et al. (2007) Bone marrow (BM) transplantation promotes beta-cell regeneration after acute injury through BM cell mobilization. *Endocrinology* 148: 2006-2015. [[PubMed](#)]
43. Krakowski ML, Kritzik MR, Jones EM, Krahl T, Lee J, et al. (1999) Transgenic expression of epidermal growth factor and keratinocyte growth factor in beta-cells results in substantial morphological changes. *J Endocrinol* 162: 167-175. [[PubMed](#)]
44. Suarez-Pinzon WL, Lakey JR, Brand SJ, Rabinovitch A (2005) Combination therapy with epidermal growth factor and gastrin induces neogenesis of human islet (beta)-cells from pancreatic duct cells and an increase in functional (beta)-cell mass. *J Clin Endocrinol Metab* 90: 3401-3409. [[PubMed](#)]
45. Brand SJ, Tagerud S, Lambert P, Magil SG, Tatarkevich K, et al. (2002) Pharmacological treatment of chronic diabetes by stimulating pancreatic beta-cell regeneration with systemic co-administration of EGF and gastrin. *Pharmacology & Toxicology* 91: 414-420.
46. Antuna-Puente B, Feve B, Fellahi S, Bastard JP (2008) Adipokines: the missing link between insulin resistance and obesity. *Diabetes Metab* 34: 2-11. [[PubMed](#)]
47. Steiner DJ, Kim A, Miller K, Hara M (2010) Pancreatic islet plasticity: interspecies comparison of islet architecture and composition. *Islets* 2: 135-145. [[PubMed](#)]
48. Willcox A, Richardson SJ, Bone AJ, Foulis AK, Morgan NG (2010) Evidence of increased islet cell proliferation in patients with recent-onset type 1 diabetes. *Diabetologia* 53: 2020-2028. [[PubMed](#)]
49. Keenan HA, Sun JK, Levine J, Doria A, Aiello LP, et al. (2010) Residual insulin production and pancreatic ss-cell turnover after 50 years of diabetes: Joslin Medalist Study. *Diabetes* 59: 2846-2853. [[PubMed](#)]
50. Willcox A, Richardson SJ, Bone AJ, Foulis AK, Morgan NG (2009) Analysis of islet inflammation in human type 1 diabetes. *Clin Exp Immunol* 155: 173-181. [[PubMed](#)]
51. Eizirik DL, Mandrup-Poulsen T (2001) A choice of death--the signal-transduction of immune-mediated beta-cell apoptosis. *Diabetologia* 44: 2115-2133. [[PubMed](#)]
52. Waldron-Lynch F, Herold KC (2011) Immunomodulatory therapy to preserve pancreatic beta-cell function in type 1 diabetes. *Nat Rev Drug Discov* 10: 439-452. [[PubMed](#)]
53. Tooley JE, Waldron-Lynch F, Herold KC (2012) New and future immunomodulatory therapy in type 1 diabetes. *Trends Mol Med* 18: 173-181. [[PubMed](#)]
54. Abdi R, Fiorina P, Adra CN, Atkinson M, Sayegh MH (2008) Immunomodulation by mesenchymal stem cells: a potential therapeutic strategy for type 1 diabetes. *Diabetes* 57: 1759-1767. [[PubMed](#)]
55. Rasmuson I, Ringden O, Sundberg B, Le Blanc K (2003) Mesenchymal stem cells inhibit the formation of cytotoxic T lymphocytes, but not activated cytotoxic T lymphocytes or natural killer cells. *Transplantation* 76: 1208-1213. [[PubMed](#)]
56. Zhang W, Ge W, Li C, You S, Liao L, et al. (2004) Effects of mesenchymal stem cells on differentiation, maturation, and function of human monocyte-derived dendritic cells. *Stem Cells Dev* 13: 263-271. [[PubMed](#)]
57. Maccario R, Podesta M, Moretta A, Cometa A, Comoli P, et al. (2005) Interaction of human mesenchymal stem cells with cells involved in alloantigen-specific immune response favors the differentiation of CD4+ T-cell subsets expressing a regulatory/suppressive phenotype. *Haematologica* 90: 516-525. [[PubMed](#)]
58. Fiorina P, Jurewicz M, Augello A, Vergani A, Dada S, et al. (2009) Immunomodulatory function of bone marrow-derived mesenchymal stem cells in experimental autoimmune type 1 diabetes. *J Immunol* 183: 993-1004. [[PubMed](#)]

59. Ezquer FE, Ezquer ME, Parrau DB, Carpio D, Yanez AJ, et al. (2008) Systemic administration of multipotent mesenchymal stromal cells reverts hyperglycemia and prevents nephropathy in type 1 diabetic mice. *Biol Blood Marrow Transplant* 14: 631-640. [PubMed]
60. Boumaza I, Srinivasan S, Witt WT, Feghali-Bostwick C, Dai Y, et al. (2009) Autologous bone marrow-derived rat mesenchymal stem cells promote PDX-1 and insulin expression in the islets, alter T cell cytokine pattern and preserve regulatory T cells in the periphery and induce sustained normoglycemia. *J Autoimmun* 32: 33-42. [PubMed]
61. Madec AM, Mallone R, Afonso G, Abou Mrad E, Mesnier A, et al. (2009) Mesenchymal stem cells protect NOD mice from diabetes by inducing regulatory T cells. *Diabetologia* 52: 1391-1399. [PubMed]
62. Sohni A, Verfaillie CM (2013) Mesenchymal stem cells migration homing and tracking. *Stem Cells Int* 2013: 130763. [PubMed]
63. Sordi V, Malosio ML, Marchesi F, Mercalli A, Melzi R, et al. (2005) Bone marrow mesenchymal stem cells express a restricted set of functionally active chemokine receptors capable of promoting migration to pancreatic islets. *Blood* 106: 419-427. [PubMed]
64. Lee RH, Pulin AA, Seo MJ, Kota DJ, Ylostalo J, et al. (2009) Intravenous hMSCs improve myocardial infarction in mice because cells embolized in lung are activated to secrete the anti-inflammatory protein TSG-6. *Cell Stem Cell* 5: 54-63. [PubMed]
65. van Dieren S, Beulens JW, van der Schouw YT, Grobbee DE, Neal B (2010) The global burden of diabetes and its complications: an emerging pandemic. *Eur J Cardiovasc Prev Rehabil* 17: S3-S8. [PubMed]
66. Cooper ME (1998) Pathogenesis, prevention, and treatment of diabetic nephropathy. *Lancet* 352: 213-219. [PubMed]
67. Parving HH, Smidt UM, Friisberg B, Bonnevie-Nielsen V, Andersen AR (1981) A prospective study of glomerular filtration rate and arterial blood pressure in insulin-dependent diabetics with diabetic nephropathy. *Diabetologia* 20: 457-461. [PubMed]
68. Raparia K, Usman I, Kanwar YS (2013) Renal morphologic lesions reminiscent of diabetic nephropathy. *Archives of Pathology & Laboratory Medicine* 137: 351-359. [PubMed]
69. Wong CY, Cheong SK, Mok PL, Leong CF (2008) Differentiation of human mesenchymal stem cells into mesangial cells in post-glomerular injury murine model. *Pathology* 40: 52-57. [PubMed]
70. Qian H, Yang H, Xu W, Yan Y, Chen Q, et al. (2008) Bone marrow mesenchymal stem cells ameliorate rat acute renal failure by differentiation into renal tubular epithelial-like cells. *Int J Mol Med* 22: 325-332. [PubMed]
71. Wu HJ, Yiu WH, Li RX, Wong DW, Leung JC, et al. (2014) Mesenchymal stem cells modulate albumin-induced renal tubular inflammation and fibrosis. *PLoS One* 9: e90883. [PubMed]
72. Oswald J, Boxberger S, Jorgensen B, Feldmann S, Ehninger G, et al. (2004) Mesenchymal stem cells can be differentiated into endothelial cells in vitro. *Stem cells* 22: 377-384. [PubMed]
73. Konno M, Hamazaki TS, Fukuda S, Tokuhara M, Uchiyama H, et al. (2010) Efficiently differentiating vascular endothelial cells from adipose tissue-derived mesenchymal stem cells in serum-free culture. *Biochem Biophys Res Commun* 400: 461-465. [PubMed]
74. Prodromidi EI, Poulosom R, Jeffery R, Roufosse CA, Pollard PJ, et al. (2006) Bone marrow-derived cells contribute to podocyte regeneration and amelioration of renal disease in a mouse model of Alport syndrome. *Stem cells* 24: 2448-2455. [PubMed]
75. Zoja C, Garcia PB, Rota C, Conti S, Gagliardini E, et al. (2012) Mesenchymal stem cell therapy promotes renal repair by limiting glomerular podocyte and progenitor cell dysfunction in adriamycin-induced nephropathy. *American Journal of Physiology Renal Physiology* 303: F1370-1381.
76. Stolzing A, Sellers D, Llewelyn O, Scutt A (2010) Diabetes induced changes in rat mesenchymal stem cells. *Cells Tissues Organs* 191: 453-465. [PubMed]
77. Phadnis SM, Ghaskadbi SM, Hardikar AA, Bhone RR (2009) Mesenchymal stem cells derived from bone marrow of diabetic patients portrait unique markers influenced by the diabetic microenvironment. *Rev Diabet Stud* 6: 260-270. [PubMed]
78. Morigi M, Imberti B, Zoja C, Corna D, Tomasoni S, et al. (2004) Mesenchymal stem cells are renoprotective, helping to repair the kidney and improve function in acute renal failure. *J Am Soc Nephrol* 15: 1794-1804. [PubMed]
79. Tegel F, Hu Z, Weiss K, Isaac J, Lange C, et al. (2005) Administered mesenchymal stem cells protect against ischemic acute renal failure through differentiation-independent mechanisms. *Am J Physiol Renal Physiol* 289: F31-42. [PubMed]
80. Duffield JS, Bonventre JV (2005) Kidney tubular epithelium is restored without replacement with bone marrow-derived cells during repair after ischemic injury. *Kidney Int* 68: 1956-1961. [PubMed]
81. Ezquer F, Ezquer M, Simon V, Pardo F, Yanez A, et al. (2009) Endovenous administration of bone-marrow-derived multipotent mesenchymal stromal cells prevents renal failure in diabetic mice. *Biol Blood Marrow Transplant* 15: 1354-1365. [PubMed]
82. Lee RH, Seo MJ, Reger RL, Spees JL, Pulin AA, et al. (2006) Multipotent stromal cells from human marrow home to and promote repair of pancreatic islets and renal glomeruli in diabetic NOD/scid mice. *Proc Natl Acad Sci USA* 103: 17438-17443. [PubMed]
83. Wang S, Li Y, Zhao J, Zhang J, Huang Y (2013) Mesenchymal stem cells ameliorate podocyte injury and proteinuria in a type 1 diabetic nephropathy rat model. *Biol Blood Marrow Transplant* 19: 538-546. [PubMed]
84. Park JH, Hwang I, Hwang SH, Han H, Ha H (2012) Human umbilical cord blood-derived mesenchymal stem cells prevent diabetic renal injury through paracrine action. *Diabetes Res Clin Pract* 98: 465-473. [PubMed]
85. Abdel Aziz MT, Wassef MA, Ahmed HH, Rashed L, Mahfouz S, et al. (2014) The role of bone marrow derived-mesenchymal stem cells in attenuation of kidney function in rats with diabetic nephropathy. *Diabetol Metab Syndr* 6: 34. [PubMed]
86. Fang Y, Tian X, Bai S, Fan J, Hou W, et al. (2012) Autologous transplantation of adipose-derived mesenchymal stem cells ameliorates streptozotocin-induced diabetic nephropathy in rats by inhibiting oxidative stress, pro-inflammatory cytokines and the p38 MAPK signaling pathway. *Int J Mol Med* 30: 85-92. [PubMed]
87. Zhang L, Li K, Liu X, Li D, Luo C, et al. (2013) Repeated systemic administration of human adipose-derived stem cells attenuates overt diabetic nephropathy in rats. *Stem Cells Dev* 22: 3074-3086. [PubMed]
88. Lv SS, Liu G, Wang JP, Wang WW, Cheng J, et al. (2013) Mesenchymal stem cells transplantation ameliorates glomerular injury in streptozotocin-induced diabetic nephropathy in rats via inhibiting macrophage infiltration. *Int Immunopharmacol* 17: 275-282. [PubMed]
89. Resnikoff S, Pascolini D, Etya'ale D, Kocur I, Pararajasegaram R, et al. (2004) Global data on visual impairment in the year 2002. *Bull World Health Organ* 82: 844-851. [PubMed]
90. Mohamed Q, Gillies MC, Wong TY (2007) Management of diabetic retinopathy: a systematic review. *JAMA* 298: 902-916. [PubMed]
91. Klein R, Knudtson MD, Lee KE, Gangnon R, Klein BE (2009) The Wisconsin Epidemiologic Study of Diabetic Retinopathy XXIII: the twenty-five-year incidence of macular edema in persons with type 1 diabetes. *Ophthalmology* 116: 497-503. [PubMed]
92. Lorenzi M, Gerhardinger C (2001) Early cellular and molecular changes induced by diabetes in the retina. *Diabetologia* 44: 791-804. [PubMed]
93. Kollias AN, Ulbig MW (2010) Diabetic retinopathy: Early diagnosis and effective treatment. *Dtsch Arztebl Int* 107: 75-83. [PubMed]
94. Cheung N, Mitchell P, Wong TY (2010) Diabetic retinopathy. *Lancet* 376: 124-136. [PubMed]
95. Lopes de Faria JM, Katsumi O, Cagliero E, Nathan D, Hirose T (2001) Neurovisual abnormalities preceding the retinopathy in patients with long-term type 1 diabetes mellitus. *Graefes Arch Clin Exp Ophthalmol* 239: 643-648. [PubMed]
96. Jousen AM, Poulaki V, Le ML, Koizumi K, Esser C, et al. (2004) A central role for inflammation in the pathogenesis of diabetic retinopathy. *FASEB J* 18: 1450-1452. [PubMed]
97. Abu El-Asrar AM, Meersschaert A, Dralands L, Missotten L, Geboes K (2004) Inducible nitric oxide synthase and vascular endothelial growth factor are colocalized in the retinas of human subjects with diabetes. *Eye* 18: 306-313. [PubMed]
98. Ezquer F, Ezquer M, Arango-Rodriguez M, Conget P (2014) Could donor multipotent mesenchymal stromal cells prevent or delay the onset of diabetic retinopathy? *Acta Ophthalmol* 92: e86-95. [PubMed]

99. Caplan AI (2008) All MSCs are pericytes? *Cell Stem Cell* 3: 229-230. [PubMed]
100. Mendel TA, Clabough EB, Kao DS, Demidova-Rice TN, Durham JT, et al. (2013) Pericytes derived from adipose-derived stem cells protect against retinal vasculopathy. *PLoS One* 8: e65691. [PubMed]
101. Rajashekhar G, Ramadan A, Abburi C, Callaghan B, Traktuev DO, et al. (2014) Regenerative therapeutic potential of adipose stromal cells in early stage diabetic retinopathy. *PLoS One* 9: e84671. [PubMed]
102. Yang Z, Li K, Yan X, Dong F, Zhao C (2010) Amelioration of diabetic retinopathy by engrafted human adipose-derived mesenchymal stem cells in streptozotocin diabetic rats. *Graefes Arch Clin Exp Ophthalmol* 248: 1415-1422. [PubMed]
103. Scalinci SZ, Scorolli L, Corradetti G, Domanico D, Vingolo EM, et al. (2011) Potential role of intravitreal human placental stem cell implants in inhibiting progression of diabetic retinopathy in type 2 diabetes: neuroprotective growth factors in the vitreous. *Clin Ophthalmol* 5: 691-696. [PubMed]
104. Calcutt NA, Cooper ME, Kern TS, Schmidt AM (2009) Therapies for hyperglycaemia-induced diabetic complications: from animal models to clinical trials. *Nat Rev Drug Discov* 8: 417-429. [PubMed]
105. Vinik AI, Park TS, Stansberry KB, Pittenger GL (2000) Diabetic neuropathies. *Diabetologia* 43: 957-973. [PubMed]
106. Sima AA (2003) New insights into the metabolic and molecular basis for diabetic neuropathy. *Cell Mol Life Sci* 60: 2445-2464. [PubMed]
107. Obrosova IG (2009) Diabetes and the peripheral nerve. *Biochim Biophys Acta* 1792: 931-940. [PubMed]
108. Vincent AM, McLean LL, Backus C, Feldman EL (2005) Short-term hyperglycemia produces oxidative damage and apoptosis in neurons. *FASEB J* 19: 638-640. [PubMed]
109. Obrosova IG, Julius UA (2005) Role for poly (ADP-ribose) polymerase activation in diabetic nephropathy, neuropathy and retinopathy. *Curr Vasc Pharmacol* 3: 267-283. [PubMed]
110. Valle-Prieto A, Conget PA (2010) Human mesenchymal stem cells efficiently manage oxidative stress. *Stem Cells Dev* 19: 1885-1893. [PubMed]
111. Kim BJ, Jin HK, Bae JS (2011) Bone marrow-derived mesenchymal stem cells improve the functioning of neurotrophic factors in a mouse model of diabetic neuropathy. *Lab Anim Res* 27: 171-176. [PubMed]
112. Kim H, Park JS, Choi YJ, Kim MO, Huh YH, et al. (2009) Bone marrow mononuclear cells have neurovascular tropism and improve diabetic neuropathy. *Stem Cells* 27: 1686-1696. [PubMed]
113. Shibata T, Naruse K, Kamiya H, Kozakae M, Kondo M, et al (2008) Transplantation of bone marrow-derived mesenchymal stem cells improves diabetic polyneuropathy in rats. *Diabetes* 57: 3099-3107. [PubMed]
114. Langemo DK, Brown G (2006) Skin fails too: acute, chronic, and end-stage skin failure. *Adv Skin Wound Care* 19: 206-211. [PubMed]
115. Martins-Mendes D, Monteiro-Soares M, Boyko EJ, Ribeiro M, Barata P, et al. (2014) The independent contribution of diabetic foot ulcer on lower extremity amputation and mortality risk. *J Diabetes Complications* 28: 632-638. [PubMed]
116. Bartus CL, Margolis DJ (2004) Reducing the incidence of foot ulceration and amputation in diabetes. *Curr Diab Rep* 4: 413-418. [PubMed]
117. Reiber GE, Vileikyte L, Boyko EJ, del Aguila M, Smith DG, et al. (1999) Causal pathways for incident lower-extremity ulcers in patients with diabetes from two settings. *Diabetes Care* 22: 157-162. [PubMed]
118. Laverdet B, Micallef L, Lebreton C, Mollard J, Lataillade JJ, et al. (2014) Use of mesenchymal stem cells for cutaneous repair and skin substitute elaboration. *Pathol Biol (Paris)* 62: 108-117. [PubMed]
119. Akita S, Akino K, Hirano A, Ohtsuru A, Yamashita S (2010) Mesenchymal stem cell therapy for cutaneous radiation syndrome. *Health Phys* 98: 858-862. [PubMed]
120. Kuo YR, Wang CT, Cheng JT, Wang FS, Chiang YC, et al. (2011) Bone marrow-derived mesenchymal stem cells enhanced diabetic wound healing through recruitment of tissue regeneration in a rat model of streptozotocin-induced diabetes. *Plastic and Reconstructive Surgery* 128: 872-880.
121. Shrestha C, Zhao L, Chen K, He H, Mo Z (2013) Enhanced healing of diabetic wounds by subcutaneous administration of human umbilical cord derived stem cells and their conditioned media. *Int J Endocrinol* 2013: 592454. [PubMed]
122. Kim SW, Zhang HZ, Guo L, Kim JM, Kim MH (2012) Amniotic mesenchymal stem cells enhance wound healing in diabetic NOD/SCID mice through high angiogenic and engraftment capabilities. *PLoS One* 7: e41105. [PubMed]
123. Kong P, Xie X, Li F, Liu Y, Lu Y (2013) Placenta mesenchymal stem cell accelerates wound healing by enhancing angiogenesis in diabetic Goto-Kakizaki (GK) rats. *Biochem Biophys Res Commun* 438: 410-419. [PubMed]
124. Zhang SJ, Jia CY (2012) Present status of research in bone marrow-derived mesenchymal stem cells for promoting the healing of diabetic ulcer. *Zhonghua Shao Shang Za Zhi* 28: 291-293. [PubMed]
125. Sasaki M, Abe R, Fujita Y, Ando S, Inokuma D, et al. (2008) Mesenchymal stem cells are recruited into wounded skin and contribute to wound repair by transdifferentiation into multiple skin cell type. *J Immunol* 180: 2581-2587. [PubMed]
126. Newman RE, Yoo D, LeRoux MA, Danilkovitch-Miagkova A (2009) Treatment of inflammatory diseases with mesenchymal stem cells. *Inflamm Allergy Drug Targets* 8: 110-123. [PubMed]
127. Rustad KC, Gurtner GC (2012) Mesenchymal Stem Cells Home to Sites of Injury and Inflammation. *Adv Wound Care (New Rochelle)* 1: 147-152. [PubMed]
128. Li TS, Takahashi M, Ohshima M, Qin SL, Kubo M, et al. (2008) Myocardial repair achieved by the intramyocardial implantation of adult cardiomyocytes in combination with bone marrow cells. *Cell Transplant* 17: 695-703. [PubMed]
129. Hocking AM, Gibran NS (2010) Mesenchymal stem cells: paracrine signaling and differentiation during cutaneous wound repair. *Exp Cell Res* 316: 2213-2219. [PubMed]
130. Chen L, Xu Y, Zhao J, Zhang Z, Yang R, et al. (2014) Conditioned medium from hypoxic bone marrow-derived mesenchymal stem cells enhances wound healing in mice. *PLoS One* 9: e96161. [PubMed]
131. Chen L, Tredget EE, Wu PY, Wu Y (2008) Paracrine factors of mesenchymal stem cells recruit macrophages and endothelial lineage cells and enhance wound healing. *PLoS One* 3: e1886. [PubMed]
132. Fong CY, Tam K, Cheyvatravindrana S, Gan SU, Gauthaman K, et al. (2014) Human Wharton's jelly stem cells and its conditioned medium enhance healing of excisional and diabetic wounds. *J Cell Biochem* 115: 290-302. [PubMed]
133. Tam K, Cheyvatravindrana S, Venugopal J, Biswas A, Choolani M, et al. (2014) A nanoscaffold impregnated with human wharton's jelly stem cells or its secretions improves healing of wounds. *J Cell Biochem* 115: 794-803. [PubMed]
134. Wang CY, Yang HB, Hsu HS, Chen LL, Tsai CC, et al. (2012) Mesenchymal stem cell-conditioned medium facilitates angiogenesis and fracture healing in diabetic rats. *J Tissue Eng Regen Med* 6: 559-569. [PubMed]
135. Rustad KC, Wong VW, Sorkin M, Glotzbach JP, Major MR, et al. (2012) Enhancement of mesenchymal stem cell angiogenic capacity and stemness by a biomimetic hydrogel scaffold. *Biomaterials* 33: 80-90. [PubMed]
136. Hong SJ, Jia SX, Xie P, Xu W, Leung KP, et al. (2013) Topically delivered adipose derived stem cells show an activated-fibroblast phenotype and enhance granulation tissue formation in skin wounds. *PLoS One* 8: e55640. [PubMed]
137. Khosrotehrani K (2013) Mesenchymal stem cell therapy in skin: why and what for? *Exp Dermatol* 22: 307-310. [PubMed]
138. Wu Y, Chen L, Scott PG, Tredget EE (2007): Mesenchymal stem cells enhance wound healing through differentiation and angiogenesis. *Stem Cells* 25: 2648-2659. [PubMed]
139. Haller MJ, Viener HL, Wasserfall C, Brusko T, Atkinson MA, et al. (2008) Autologous umbilical cord blood infusion for type 1 diabetes. *Exp Hematol* 36: 710-715. [PubMed]
140. Haller MJ, Wasserfall CH, Hulme MA, Cintron M, Brusko TM, et al. (2011) Autologous umbilical cord blood transfusion in young children with type 1 diabetes fails to preserve C-peptide. *Diabetes Care* 34: 2567-2569. [PubMed]
141. Zhao Y, Jiang Z, Zhao T, Ye M, Hu C, et al (2012) Reversal of type 1 diabetes via islet beta cell regeneration following immune modulation by cord blood-derived multipotent stem cells. *BMC Med* 10: 3. [PubMed]
142. Hu J, Yu X, Wang Z, Wang F, Wang L, et al. (2013) Long term effects of the implantation of Wharton's jelly-derived mesenchymal stem cells from the umbilical cord for newly-onset type 1 diabetes mellitus. *Endocr J* 60: 347-357. [PubMed]

143. Ra JC, Shin IS, Kim SH, Kang SK, Kang BC, et al. (2011) Safety of intravenous infusion of human adipose tissue-derived mesenchymal stem cells in animals and humans. Stem Cells Dev 20: 1297-1308. [[PubMed](#)]
144. Bernardo ME, Zaffaroni N, Novara F, Cometa AM, Avanzini MA, et al. (2007) Human bone marrow derived mesenchymal stem cells do not undergo transformation after long-term in vitro culture and do not exhibit telomere maintenance mechanisms. Cancer Res 67: 9142-9149. [[PubMed](#)]
145. Rubio D, Garcia S, Paz MF, De la Cueva T, Lopez-Fernandez LA, et al. (2008) Molecular characterization of spontaneous mesenchymal stem cell transformation. PloS One 3: e1398. [[PubMed](#)]
146. Jeong JO, Han JW, Kim JM, Cho HJ, Park C, et al. (2011) Malignant tumor formation after transplantation of short-term cultured bone marrow mesenchymal stem cells in experimental myocardial infarction and diabetic neuropathy. Circ Res 108: 1340-1347. [[PubMed](#)]
147. Hernandez RM, Orive G, Murua A, Pedraz JL (2010) Microcapsules and microcarriers for in situ cell delivery. Adv Drug Deliv Rev 62: 711-730. [[PubMed](#)]

Citation: Ezquer M, Arango-Rodriguez M, Giraud-Billoud M, Ezquer F (2014) Mesenchymal Stem Cell Therapy in Type 1 Diabetes Mellitus and Its Main Complications: From Experimental Findings to Clinical Practice. J Stem Cell Res Ther 4: 227. doi:[10.4172/2157-7633.1000227](https://doi.org/10.4172/2157-7633.1000227)

Submit your next manuscript and get advantages of OMICS Group submissions

Unique features:

- User friendly/feasible website-translation of your paper to 50 world's leading languages
- Audio Version of published paper
- Digital articles to share and explore

Special features:

- 350 Open Access Journals
- 30,000 editorial team
- 21 days rapid review process
- Quality and quick editorial, review and publication processing
- Indexing at Pubmed (partial), Scopus, EBSCO, Index Copernicus and Google Scholar etc
- Sharing Option: Social Networking Enabled
- Authors, Reviewers and Editors rewarded with online Scientific Credits
- Better discount for your subsequent articles

Submit your manuscript at: <http://www.omicsonline.org/submission>