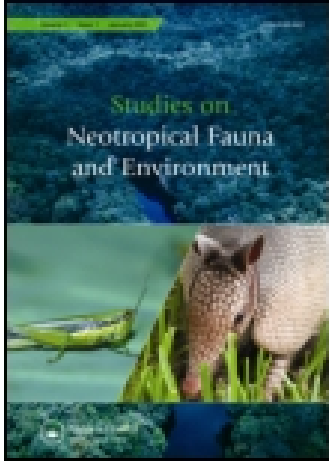


This article was downloaded by: [Susana Paradell]

On: 24 October 2014, At: 10:28

Publisher: Taylor & Francis

Informa Ltd Registered in England and Wales Registered Number: 1072954 Registered office: Mortimer House, 37-41 Mortimer Street, London W1T 3JH, UK



Studies on Neotropical Fauna and Environment

Publication details, including instructions for authors and subscription information:
<http://www.tandfonline.com/loi/nnfe20>

Diversity of leafhoppers (Hemiptera: Cicadellidae) in experimental rice lots and associated weeds in Buenos Aires province, Argentina

Susana L. Paradell^a, Arnaldo Maciá^a, Marcelo Asbornó^b, María I. Catalano^{ac}, María E. Brentassi^a, Graciela Varela^a, Gimena Dellapé^a, Bárbara S. Defea^a, Alvaro Foieri^d & Ana M. Marino de Remes Lenicov^a

^a División Entomología, Facultad de Ciencias Naturales y Museo (UNLP), La Plata, Buenos Aires, Argentina

^b Facultad de Ciencias Agrarias y Forestales, UNLP, La Plata, Buenos Aires, Argentina

^c Universidad Nacional del Noroeste de Buenos Aires, Pergamino, Buenos Aires, Argentina

^d PROIMI (CONICET), San Miguel de Tucumán, Tucumán, Argentina

Published online: 20 Oct 2014.

To cite this article: Susana L. Paradell, Arnaldo Maciá, Marcelo Asbornó, María I. Catalano, María E. Brentassi, Graciela Varela, Gimena Dellapé, Bárbara S. Defea, Alvaro Foieri & Ana M. Marino de Remes Lenicov (2014) Diversity of leafhoppers (Hemiptera: Cicadellidae) in experimental rice lots and associated weeds in Buenos Aires province, Argentina, *Studies on Neotropical Fauna and Environment*, 49:3, 213-221, DOI: [10.1080/01650521.2014.962950](https://doi.org/10.1080/01650521.2014.962950)

To link to this article: <http://dx.doi.org/10.1080/01650521.2014.962950>

PLEASE SCROLL DOWN FOR ARTICLE

Taylor & Francis makes every effort to ensure the accuracy of all the information (the "Content") contained in the publications on our platform. However, Taylor & Francis, our agents, and our licensors make no representations or warranties whatsoever as to the accuracy, completeness, or suitability for any purpose of the Content. Any opinions and views expressed in this publication are the opinions and views of the authors, and are not the views of or endorsed by Taylor & Francis. The accuracy of the Content should not be relied upon and should be independently verified with primary sources of information. Taylor and Francis shall not be liable for any losses, actions, claims, proceedings, demands, costs, expenses, damages, and other liabilities whatsoever or howsoever caused arising directly or indirectly in connection with, in relation to or arising out of the use of the Content.

This article may be used for research, teaching, and private study purposes. Any substantial or systematic reproduction, redistribution, reselling, loan, sub-licensing, systematic supply, or distribution in any form to anyone is expressly forbidden. Terms & Conditions of access and use can be found at <http://www.tandfonline.com/page/terms-and-conditions>

ORIGINAL ARTICLE

Diversity of leafhoppers (Hemiptera: Cicadellidae) in experimental rice lots and associated weeds in Buenos Aires province, Argentina

Susana L. Paradell^{a*}, Arnaldo Maciá^a, Marcelo Asbornó^b, María I. Catalano^{a,c}, María E. Brentassi^a, Graciela Varela^a, Gimena Dellapé^a, Bárbara S. Defea^a, Alvaro Foieri^d & Ana M. Marino de Remes Lenicov^a

^aDivisión Entomología, Facultad de Ciencias Naturales y Museo (UNLP), La Plata, Buenos Aires, Argentina; ^bFacultad de Ciencias Agrarias y Forestales, UNLP, La Plata, Buenos Aires, Argentina; ^cUniversidad Nacional del Noroeste de Buenos Aires, Pergamino, Buenos Aires, Argentina; ^dPROIMI (CONICET), San Miguel de Tucumán, Tucumán, Argentina

(Received 8 January 2014; accepted 4 September 2014)

We identified the species of Cicadellidae associated with rice fields from an agricultural experimental station of La Plata city, Argentina, and explored the diversity pattern of the leafhopper assemblage. Insects were obtained from rice and surrounding weeds between 2006 and 2010. *Syncharina argentina* (Berg) and *Agalliana ensigera* Oman were the most abundant species in rice and weeds, respectively. Diversity (H'), heterogeneity (D) and evenness (J) indices were estimated. There was a significant effect of crop cycle (2006 to 2010) and host plant (rice and weeds) on H' and D , with the interaction between them being not significant. Evenness was similar in rice lots and weeds, but differed between crop cycles. The pattern of abundance of species within rice lots and weeds followed the logarithmic model. Possible explanations for this pattern are discussed. The importance of the presence of some species as vectors of plant pathogens is highlighted.

Keywords: leafhoppers; rice field; biodiversity; range-abundance models; Argentina

Introduction

Cicadellidae (leafhoppers) is an important insect taxon from the agricultural point of view. It includes vectors of pathogens that cause diseases in crops with high economic significance (Maramorosch & Harris 1979). Nearly 70% of insect species transmitting plant disease agents are from this family (Nielson 1985). Leafhoppers also cause mechanical damage to plants during feeding and oviposition (Nault & Ammar 1989; Backus et al. 2005).

Among the cultivated plants affected by leafhoppers, rice (*Oryza sativa* L.) is one of the most important because of its high nutritional value. It is the main food of two-thirds of the world's population, and the basic livelihood for more than 30 countries in Asia, Africa, Latin America and the Caribbean (Wilson & Claridge 1991). The Argentinean provinces Entre Ríos and Corrientes account for around 90% of the country's production of rice (Fundación Proarroz 2013).

In Argentina, knowledge about Auchenorrhyncha affecting rice and the diseases they transmit is scarce. A survey of Cicadellidae from rice fields in Corrientes province revealed the presence of eight species (Remes Lenicov & Tesón 1985). In Entre Ríos province the most abundant species found was *Syncharina argentina* (Berg 1879) (Paradell et al. 2006). A literature review of *Syncharina* Young, which is widespread in South

America, revealed that two of the four species in this genus, namely *S. punctatissima* (Signoret 1854) and *S. argentina*, are associated with rice and spontaneous vegetation (Remes Lenicov, Mariani et al. 2006; Paradell et al. 2011). Another important species found on rice is *Agalliana ensigera* Oman 1934 (Paradell et al. 2006). It has a Neotropical distribution and occurs in northern and central Argentina (Christensen 1942; Remes Lenicov 1982). It is also often registered on other horticultural, cereal and forage crops such as maize (Paradell et al. 2001), alfalfa (Meneguzzi 2008), garlic (Catalano 2011) and hairy vetch (Paradell et al. 2014). This leafhopper is the most important vector of “Argentine Curly Top” disease of sugar beet (Fawcett 1927) and “Brazilian Curly Top” of tomato (Costa 1952) in South America. In addition, this species was considered as a potential vector of Ar AWB “Witches broom” in alfalfa and 16 SrIII (X-disease) “Garlic decline” disease by Meneguzzi (2008) and Catalano (2011), respectively.

Results about the diversity of Delphacidae and Cixiidae (Fulgoromorpha) associated with rice were published recently (Remes Lenicov et al. 2014), but studies on leafhoppers on rice in Argentina are scarce. In order to systematically survey the species associated with rice crops, we conducted a sampling program designed to assess the number of species of

*Corresponding author. Email: paradell@fcnym.unlp.edu.ar

Cicadellidae present, and to estimate their diversity, heterogeneity and evenness.

Leafhoppers may exploit plants for different resources, such as food, oviposition sites and shelter (Harris 1979; Nault & Ammar 1989). After settlement, species can compose an assemblage [defined as a part of the community whose members are phylogenetically related (Faith et al. 1996)] resulting from the interactions between the component species and the constraints imposed by the habitat. The assemblage may assume a particular model of abundance distribution, which is a mathematical description of abundance data. Species may also have the possibility of colonizing contiguous but distinct habitats. The outcome of this would be a different species abundance model in each relatively homogeneous part of the habitat. The description of such abundance patterns is as important as the measurement of diversity in a community (Tokeshi 1993). In order to ascertain patterns of the structure of the assemblage of Cicadellidae within the agronomic ecosystem under study, we explored the degree of adjustment of the theoretical distribution of species, based on the frequency of individuals, to the actual observed distribution. Our interest was to characterize the α -diversity pattern of leafhoppers in the rice culture and to assess if this pattern differs amongst the sub-systems formed by rice plots and surrounding weeds. Weeds may be another source of biological harm for the cultivation of rice, as they can reduce the maximum potential yield (Lovato Echeverría et al. 2013). Therefore, we explored differences among species present, and their diversity patterns in both sub-systems of the rice field.

Material and methods

Sampling site

Collections were performed in a rice field at the Agricultural Experimental Station “Julio Hirschhorn” of the Facultad de Ciencias Agrarias y Forestales, Universidad Nacional de La Plata, Buenos Aires province, Argentina (34°56'57" S, 57°58'22" W). The field is a rectangle of 0.6 ha encompassing 48 plots of approximately 11 × 11 m each. The boundaries of the field are non-cultivated strips with spontaneous vegetation (weeds), which separate the rice field from other crops. Sampling was performed along four cropping seasons from 2006 to 2010. Each rice crop cycle lasted from November (seeding) to April (harvest). Samples were obtained from both the rice plots and the strips with weeds. Weeds surrounding the culture were identified according to Cabrera & Zardini (1978).

Cicadellid sampling

Sampling started on December 2006 and ended on March 2010. Each year, collections began after rice plants had more than four leaves. Insects were collected weekly with a trawl sweep net (40 cm in diameter). Fifty successive strokes per sampling date were performed on six randomly selected rice plots (total: 300 sweeps per week). Another 50 sweeps were carried out on each strip (front, right, left and back sides) of the surrounding weeds (total: 200 sweeps per week). Specimens were dissected under a stereoscopic microscope using conventional techniques (Young 1977) in order to be identified. Identification followed Linnavuori (1959), Paradell (1995a, 1995b), Remes Lenicov & Tesón (1985) and Wilson & Claridge (1991). Individuals were deposited and compared with reference specimens hosted at the collection of Museo de La Plata, Argentina.

Data analysis

Samples were assorted according to the portion of the field where they were obtained (rice plots or the surrounding strips with weeds). Numbers of individuals were summed up for each sampling subset (rice and weeds hereafter) within each species, considering the total caught from all samples obtained between 2006 and 2010. To estimate the local diversity of leafhoppers and its temporal fluctuation, we calculated diversity, heterogeneity and evenness. Diversity was estimated with the Shannon–Wiener index as $H' = -\sum p_i \ln p_i$, where p_i is the proportion of the i th species in relation to the total number of species per sample. Heterogeneity was estimated with the Simpson index as $D = \sum p_i^2$. Evenness was estimated with the Shannon–Wiener index as $J' = H'/H'_{\max}$, with $H'_{\max} = \ln(S)$, where S is the species richness (Pielou 1969; Peet 1974; Krebs 1989).

Comparisons of diversity, heterogeneity and evenness among the four cropping cycles and host plants, and their interaction, were tested using two-way analysis of variance (ANOVA) on raw data. Data were not transformed because normality of H' , D and J' was verified after applying the Kolmogorov–Smirnov goodness of fit procedure (Zar 1984). Variation between rice plots, or between strips with weeds surrounding plots, was included as the experimental error. Each sample consisting in 50 net strokes was considered as a replicate (six replicates on rice and four replicates on weeds per sampling date). *A posteriori* comparisons between significant effects was performed with Tukey's honest significance test with $\alpha = 0.05$ (Zar 1984).

Species of leafhoppers were arranged according to their abundance. Species lists and their abundances

differed between host plants; thus, two lists were ranked from the most to the less abundant. After that, each observed frequency distribution was adjusted to the expected distribution, according to the following models: geometric series, log-normal distribution, logarithmic series and the broken stick model. Methods for obtaining expected distributions followed procedures described in Krebs (1989) and Magurran (2004). Differences between expected and observed abundance curves were calculated using χ^2 tests for the H_0 of no difference between them, with $\alpha = 0.05$.

Results

A total of 4113 individuals of Cicadellidae were caught, 684 (17%) on rice and 3429 (83%) on weeds. We identified 39 species, belonging to 29 genera. We recorded 25 species in rice plots and 38 in the surrounding natural vegetation (Table 1). Thus, both species richness and abundance of individuals were higher in weeds than in rice. The abundance plot for all species shows a faunal distribution with a single species with > 1000 individuals, 17% of species with > 100 individuals and 38% with less than 10 individuals (Figure 1). The most abundant species on rice were *S. argentina* ($n = 377$), *Haldorus sexpunctatus* (Berg) ($n = 59$) and *A. ensigera* ($n = 55$), and on weeds, *A. ensigera* ($n = 1016$), *S. punctatissima* ($n = 628$) and *Exitianus obscurinervis* (Stål) ($n = 403$). The following taxa were recorded as singletons in rice: *Pawiloma victima* (Germar), and in weeds: *Tapajosa rubromarginata* (Signoret), *Mendozellus asunctia* Cheng, and *Unerus* sp.

ANOVA showed a significant effect of crop cycle and host plant (rice and weeds) on both diversity estimated with Shannon–Wiener's H' (Figure 2) and heterogeneity estimated with Simpson's D (Figure 3), with the interactions between them being not significant (Table 2). Evenness estimated with J' was similar for rice plots and weeds, but it differed significantly among crop cycles (Figure 4); the interaction term (crop cycle \times host plant) had a not significant effect on evenness (Table 2). Diversity and heterogeneity were highest in the first (2006–2007) and last crop cycle (2009–2010), and lowest in the second (2007–2008) and third (2008–2009); diversity and heterogeneity were also significantly higher in weeds than in rice (Figures 2, 3).

There were no significant differences ($p > 0.05$) between the observed distributions of leafhopper species sampled on rice and on weeds and the logarithmic series (Table 3). The geometric series, log-normal distribution and the broken stick model did not fit the

observational data of species abundance on rice or on weeds ($p < 0.05$).

Discussion

Leafhopper diversity

The current study on an assemblage of Cicadellidae from temperate Argentina shows that rice fields can sustain a diverse community, even though they comprise habitats characterized in general by low complexity, compared to non-cropped landscapes. Despite this many leafhopper species can colonize rice plants. The majority of rice farming activities in Argentina take place in its northernmost latitudes, thus, a more diverse assemblage of leafhoppers can be expected than in La Plata. However, comparisons are not possible between the relative abundance of species associated with rice in the two latitudes because no information about the number of individuals per species was provided by Remes Lenicov & Tesón (1985). On the basis of presence/absence, four species sampled by us on rice, *Ciminius platensis* (Berg), *Hortensia similis* (Walker), *S. argentina* and *S. punctatissima*, were also recorded in Corrientes province (about 800 km distant from La Plata) (Remes Lenicov & Tesón 1985). Species richness of leafhoppers in La Plata was similar to richness found by Paradell et al. (2006) in Entre Ríos province. Moreover, they found that *S. argentina* was the most abundant species on rice and *A. ensigera* on weeds, which agrees with the present study.

Annual changes in species diversity and heterogeneity were recorded, and these changes were independent of the host plants, as revealed by the not significant interaction between the effects of crop cycle and host plant in the ANOVA. The *a posteriori* tests of ANOVA grouped together the means of H' and D for the 2007–2008 and 2008–2009 periods, thus the influence of factors reducing diversity and heterogeneity during the two crop cycles was similar. Technical aspects of the cropping practice (rice strain, date of seeding and flooding of plots, phenology of rice) did not differ noticeably among crop cycles. Therefore, other factors such as weather variables and biological interactions may influence the set of species, but their impact remains as yet unknown.

Weeds sustained a richer and more varied leafhopper assemblage than rice. This was not unexpected because the spontaneous vegetation comprises more plant species than a monoculture, and consequently the availability of resources would be higher. Diversity in rice would be dependent on feeding or oviposition choice by insects; this would explain why fewer species were associated with rice than with

Table 1. Spectrum and abundance of species of Cicadellidae collected on rice plots and surrounding weed strips, at the Agricultural Experimental Station "Julio Hirschhorn", La Plata, Argentina during 2006–2010. Percentage of each taxon on rice and weeds is given in brackets.

Species	Abundance	
	Rice	Weeds
Agallinae		
<i>Agalliana ensigera</i> Oman	55 (8)	1016 (30)
<i>Bergallia signata</i> (Stal)	1 (< 1)	4 (< 1)
Cicadellinae		
<i>Bucephalonia xanthophis</i> (Berg)	—	3 (< 1)
<i>Ciminius platensis</i> (Berg)	1 (< 1)	10 (< 1)
<i>Draeculacephala</i> sp.	4 (< 1)	2 (< 1)
<i>Hortensia similis</i> (Walker)	1 (< 1)	2 (< 1)
<i>Pawiloma victima</i> (Germar)	1 (< 1)	—
<i>Plesiommata mollicella</i> (Fowler)	1 (< 1)	48 (1)
<i>Syncharina argentina</i> (Berg)	377 (55)	73 (2)
<i>Syncharina punctatissima</i> (Signoret)	22 (3)	628 (18)
<i>Tapajosa rubromarginata</i> (Signoret)	—	1 (< 1)
Coelidiinae		
<i>Coelidia</i> sp.	—	4 (< 1)
Deltocephalinae		
<i>Amplicephalus dubius</i> (Linnavuori)	8 (1)	5 (< 1)
<i>Amplicephalus faminoides</i> Linnavuori	—	3 (< 1)
<i>Amplicephalus marginellanus</i> (Metcalf)	6 (< 1)	53 (2)
<i>Amplicephalus simpliciusculus</i> Linnavuori	4 (< 1)	70 (2)
<i>Amplicephalus</i> sp.	11 (2)	44 (1)
<i>Atanus viridis</i> Linnavuori	—	22 (1)
<i>Atanus</i> sp.	1 (< 1)	2 (< 1)
<i>Balchutha lucida</i> (Butler)	9 (1)	4 (< 1)
<i>Balchutha rosea</i> (Scott)	3 (< 1)	31 (1)
<i>Chlorotettix fraterculus</i> (Berg)	26 (4)	179 (5)
<i>Chlorotettix neotropicus</i> Jensen-Haarup	—	48 (1)
<i>Chlorotettix</i> sp.	4 (< 1)	1 (< 1)
<i>Clorindaia hecaloides</i> Linnavuori	—	17 (< 1)
<i>Exitianus obscurinervis</i> (Stål)	36 (5)	403 (12)
<i>Frequenamia spiniventris</i> (Linnavuori)	—	2 (< 1)
<i>Fusanus griseostriatus</i> Linnavuori	—	6 (< 1)
<i>Graminella puncticeps</i> Linnavuori	30 (4)	21 (< 1)
<i>Haldorus sexpunctatus</i> (Berg)	59 (9)	137 (4)
<i>Mendozellus asunctia</i> Cheng	—	1 (< 1)
<i>Spangbergiella vulnerata</i> Signoret	3 (< 1)	107 (3)
<i>Stirellus picinus</i> (Berg)	3 (< 1)	8 (< 1)
<i>Unerus</i> sp.	—	1 (< 1)
Gyponinae		
<i>Curtara pagina</i> De Long & Freytag	—	43 (1)
<i>Reticana lineata</i> Burmeister	—	14 (< 1)
<i>Reticana</i> sp.	—	3 (< 1)
Ledrinae		
<i>Xerophloea viridis</i> (Fabricius)	8 (1)	342 (10)
Typhlocybinae		
<i>Empoasca curveola</i> Oman	10 (1)	71 (2)
Total number of individuals	684	3429
Total number of species	25	38

weeds. Although there is a lack of studies concerning host preferences of Cicadellidae from Argentina, on the basis of previous experience, we observed that *S. argentina* can complete its development from egg to adult on rice plants (Barbara S. Defea, unpubl. data), and that in rice fields from other parts of the country

its populations peak during the initial period of the culture (Remes Lenicov & Tesón 1985). In Entre Ríos province, *S. argentina* is the most abundant species (Paradell et al. 2006). This taxon, although not a feeding specialist, had a close association with rice and deserves further studies in the laboratory in

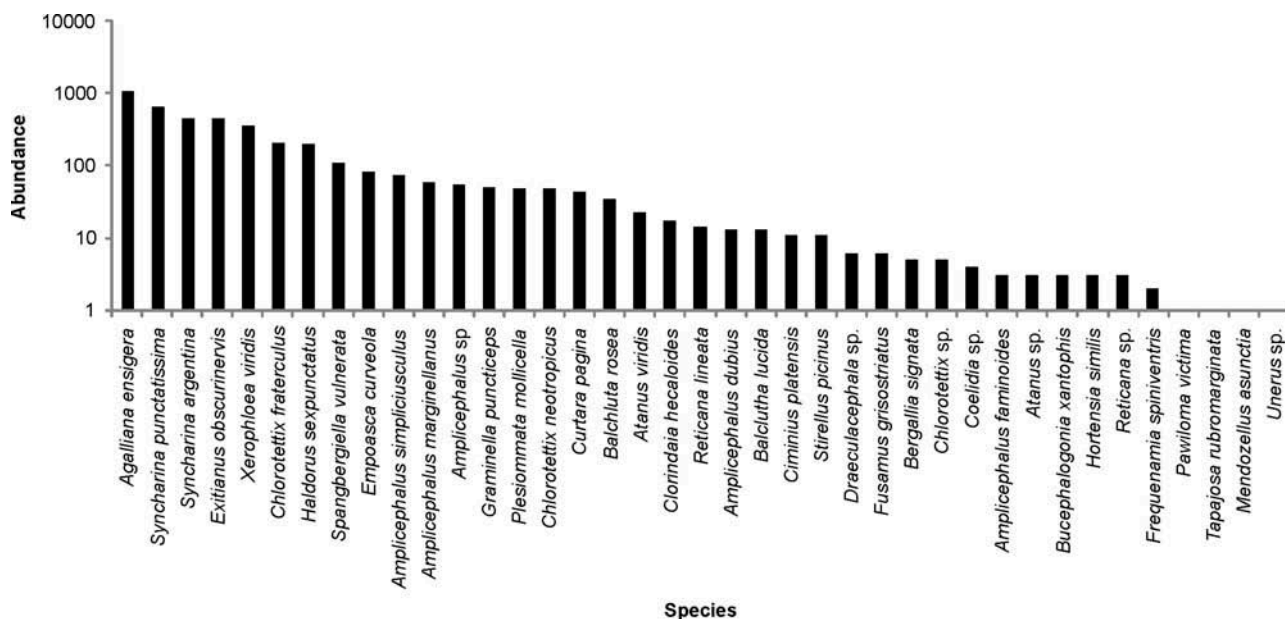


Figure 1. Ranking, according to abundance, of species of Cicadellidae collected at La Plata, Buenos Aires, Argentina, between 2006 and 2010.

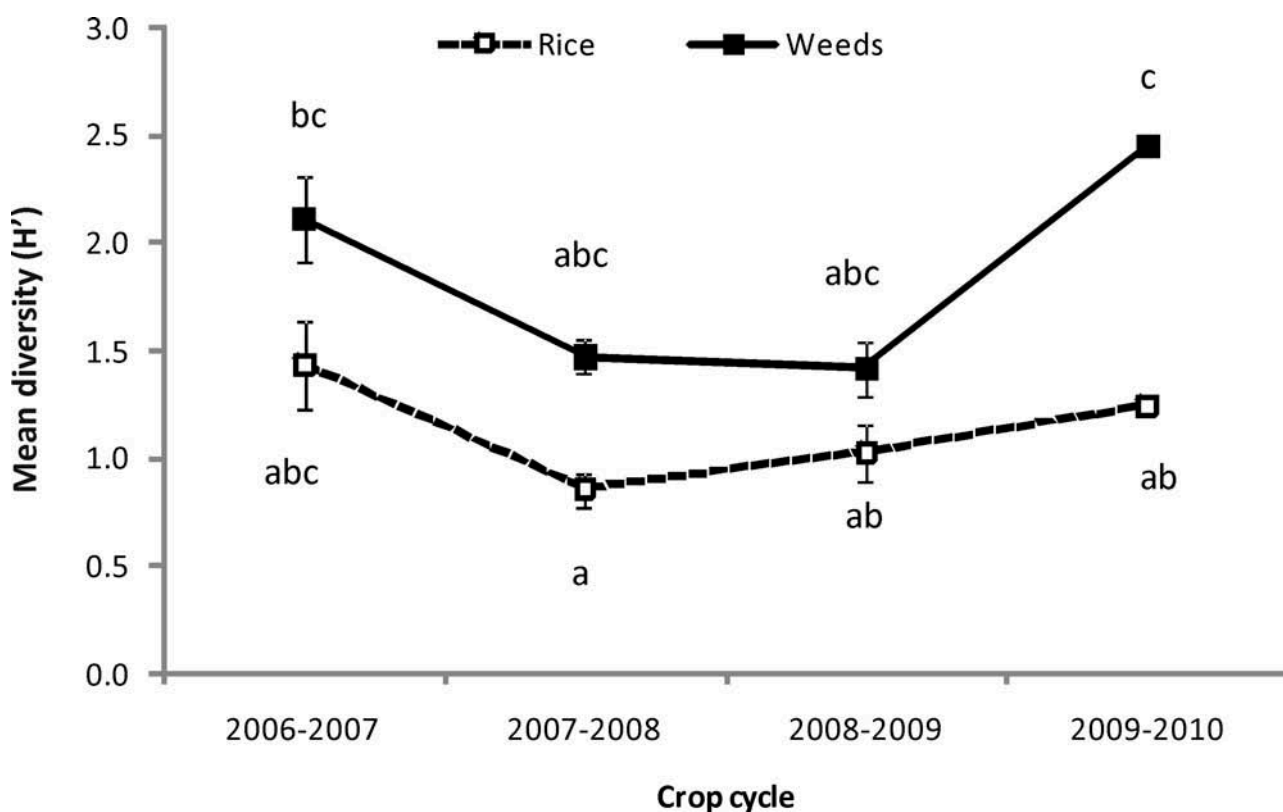


Figure 2. Mean diversity (H') in the assemblage of Cicadellidae from La Plata, Buenos Aires, Argentina, collected along four crop cycles (2006 to 2010) on rice plots and surrounding weeds. Means followed by the same letter are not statistically different. Vertical bars denote \pm SE.

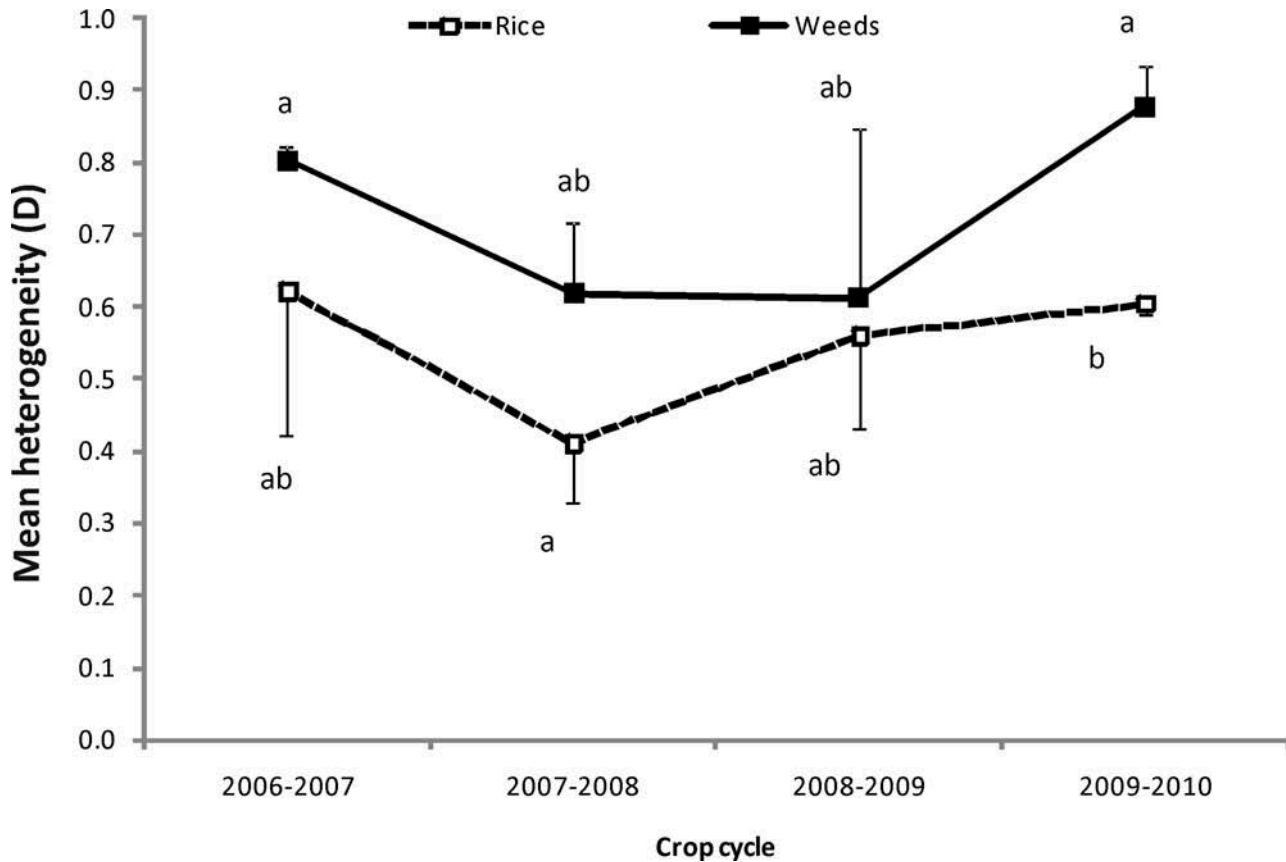


Figure 3. Mean heterogeneity (D) in the assemblage of Cicadellidae from La Plata, Buenos Aires, Argentina, collected along four crop cycles (2006 to 2010) on rice plots and surrounding weeds. Means followed by the same letter are not statistically different. Vertical bars denote + or – SE (for weeds and rice, respectively).

order to obtain a sound knowledge about its preference for rice as a host.

Evenness did not differ significantly between rice and weeds. In other words, the degree to which individuals are distributed in an equitable manner among species was preserved regardless of the host plants for which it was calculated. Diversity of herbivorous insects such as leafhoppers may be maintained through low competitive exclusion, which in turn allows the coexistence of many species (Siemann et al. 1998).

The differences in abundance and richness among cropping cycles may be attributed to variability in the density of weeds associated with the crop. During the first and last cropping cycles higher values for these parameters may be linked to higher resource availability for insect species. The abundance of spontaneous plants associated with rice can influence the spatial distribution of leafhoppers, which in turn may reflect a more diverse offer of refuges in alternative hosts (Decante et al. 2009), with an increase in the number of insect species on them.

Species abundance models

We determined that the assemblage of leafhoppers followed a pattern of species distribution that fitted the log-series model for the case of insects sampled on rice. In the logarithmic series (Fisher et al. 1943), a few factors determine the structure of the community, and there is high heterogeneity. This agrees with the idea that rice is the most important element shaping the assemblage and favoring heterogeneity, owing to the existence of one or few dominant species. This may be the case for *S. argentina*, a species whose abundance exceeded the abundance of all the other species together occurring on rice (377 versus 307 individuals). Samples from weeds also fitted the logarithmic model. We expected that the spontaneous vegetation would harbor a more diverse and even distribution of leafhoppers, thus following the broken stick model (MacArthur 1957). This hypothesis was not sustained by the results, because although diversity was higher in weeds than in rice, evenness did not depend on host plants. We observed that spontaneous plants were often

Table 2. Results from ANOVA with crop cycle (2006 to 2010) and host plant (rice and weeds) as main effects, and diversity (H'), heterogeneity (D) and evenness (J') as response variables.

Effect	H'			D			J'		
	df	F	p	df	F	p	df	F	p
Crop cycle (1)	3	4.70	0.008	3	3.32	0.03	3	2.98	0.048
Host plant (2)	1	19.08	0.0001	1	9.26	0.005	1	0.02	0.89 NS
(1) × (2)	3	0.99	0.411 NS	3	0.56	0.64 NS	3	0.87	0.47 NS
Error	28			28			28		

NS: not significant.

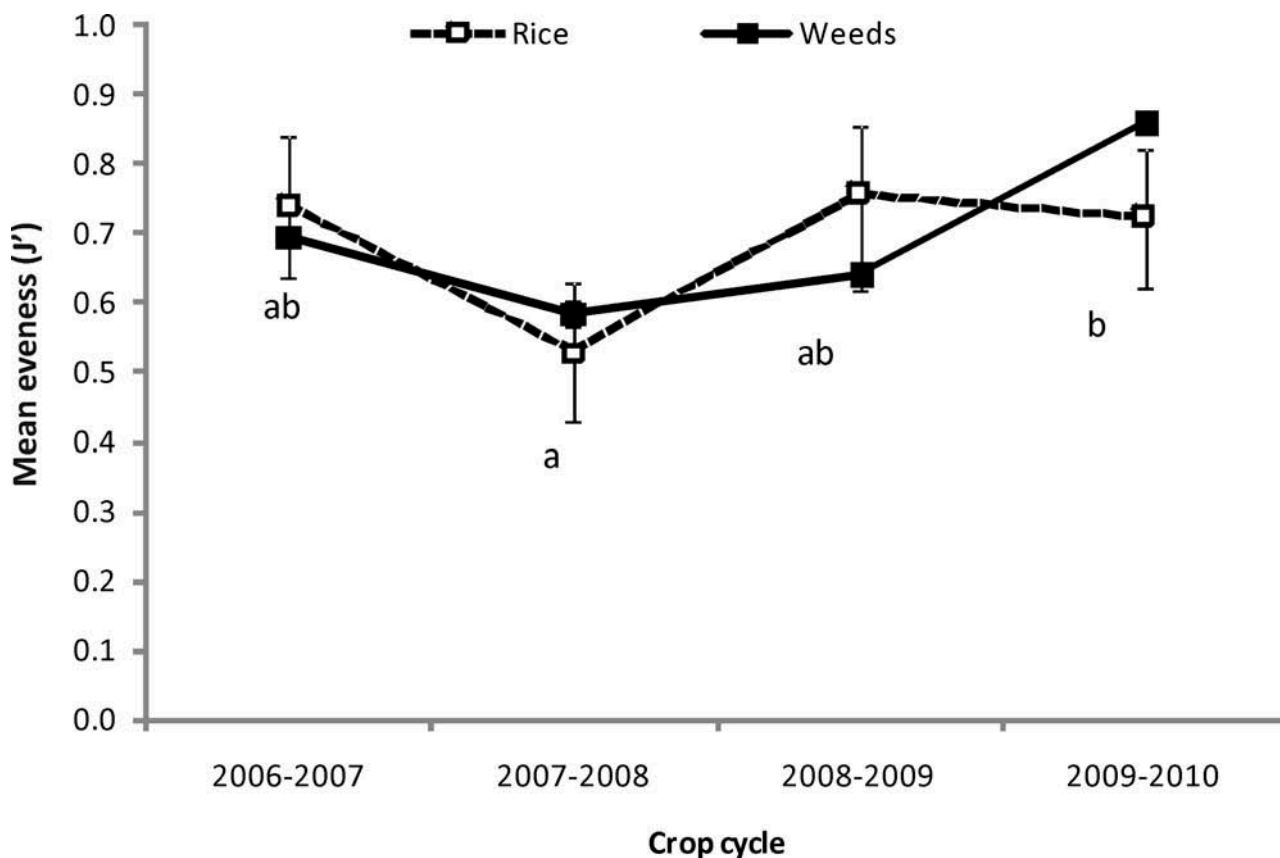

 Figure 4. Mean evenness (J') in the assemblage of Cicadellidae from La Plata, Buenos Aires, Argentina, collected between 2006 and 2010 on rice plots and surrounding weeds. Means for crop cycles followed by the same letter are not statistically different; as the effect of host plant was not significant, their means were not compared. Vertical bars denote \pm SE.

 Table 3. Values for χ^2 tests and p -values on H_0 : no differences between observed and expected frequency distributions calculated by the geometric series, broken stick, logarithmic and log-normal models for abundance of species sampled on rice and weeds from rice plots from La Plata, Argentina, from 2006 to 2010.

Model	Rice			Weeds		
	χ^2	df	p	χ^2	df	p
Geometric	680.32	25	< 0.01	1267.28	33	< 0.01
Broken stick	92.27	8	< 0.01	280.36	9	< 0.01
Logarithmic	7.63	8	0.47	14.63	9	0.10
Log-normal	26.68	9	< 0.01	19.74	9	0.02

growing within rice plots, especially in periods when rice plants were artificially flooded. Consequently, the division between two distinct subsystems was sometimes lost, and the separation of the community would be somewhat artificial. However, at the population level, some species appeared to be attracted to specific parts of the agroecosystem, as was the case for *S. argentina* on rice.

Distribution of key species and economic importance

The geographical range of *S. argentina* comprises Brazil and Argentina (Young 1977). In the latter country it is mainly associated with cereal crops in the northern and central areas (Remes Lenicov & Tesón 1985; Tesón et al. 1986; Remes Lenicov & Virla 1993; Remes Lenicov, Paradell et al. 2006) and also with spontaneous vegetation (Paradell et al. 2011). It is important to highlight that some species [*Bucephalagonia xanthophis* (Berg), *E. obscurinervis*, *Graminella puncticeps* Linnavuori, *Stirellus picinus* (Berg)], associated with rice crops are vectors of pathogens in other parts of the world, mainly of other crops with high commercial importance (Linnavuori 1959; Young 1977; Wilson & Claridge 1991). *Agalliana ensigera*, the third most abundant species on rice, demands attention due to its role as a vector, as emphasized in previous studies (Fawcett 1927; Costa 1952; Paradell et al. 2006; Meneguzzi 2008; Catalano 2011; Paradell et al. 2014), a fact that reinforces the necessity of continuing basic studies about the transmission of pathogens that cause diseases in the region.

The lack of entomological studies focusing on the fauna that lives in rice fields and spontaneous vegetation in Argentina means that it is necessary that further studies are carried out on diversity and population dynamics of leafhoppers feeding on this crop. Monitoring should focus on the most important elements of biodiversity, such as vector species, since this may be better than spreading limited resources across larger surveys (Gaines et al. 1999). In this sense, our findings pointed to *S. argentina* as a key species in rice fields from Argentina.

Acknowledgments

This research was supported by Universidad Nacional de La Plata (UNLP grants 11N/ 630 and N/472). SP and MEB are researchers from Comisión de Investigaciones Científicas de la provincia de Buenos Aires (CIC). AM is research assistant from CIC. AMMRL is a researcher from Consejo Nacional de Investigaciones Científicas y Técnicas (CONICET). BD, AF and GD are fellows from CONICET.

References

- Backus E, Serrano M, Ranger C. 2005. Mechanisms of hopperburn: An overview of insect taxonomy, behavior and physiology. *Annu Rev Entomol.* 50:125–151.
- Cabrera AL, Zardini EM. 1978. Manual de la flora de los alrededores de Buenos Aires. Buenos Aires: ACME.
- Catalano MI. 2011. Cicadélidos vectores de fitoplasmas a cultivos de importancia económica en la Argentina. Sistemática y bioecología (Insecta- Auchenorrhyncha-Cicadellidae) [PhD thesis]. [La Plata]: Universidad Nacional de La Plata.
- Christensen J. 1942. Notas sobre *Agalliana ensigera* Oman (Homoptera). *Notas del Museo de La Plata.* 7(55):27–38.
- Costa AS. 1952. Further studies on tomato curly top in Brazil. *Phytopathol.* 42:396–403.
- Decante D, van Leeuwen C, van Helden M. 2009. Influence of plot characteristics and surrounding vegetation on the intra-plot spatial distribution of *Empoasca vitis*. *Agr Forest Entomol.* 11(4):377–387.
- Faulth EJB, Camara M, Resetarits WJ, Van Buskirk Jr. J, McCollum SA. 1996. Simplifying the jargon of community ecology: A conceptual approach. *Am Nat.* 147(2):282–286.
- Fawcett GL. 1927. The curly top of sugar beet in the Argentine. *Phytopathol.* 17:407–408.
- Fisher RA, Corbet AS, Williams CB. 1943. The relation between the number of species and the number of individuals in a random sample of an animal population. *J Animal Ecol.* 12 (1):42–58.
- Fundación ProArroz [Internet]. 2013. Concordia, Entre Ríos; [cited 2013 Aug 10]. Available from: <http://www.proarroz.com.ar>
- Gaines WL, Harrod RJ, Lehmkühl JF. 1999. Monitoring biodiversity: quantification and interpretation. Portland (OR): Dept of Agriculture, Forest Service, Pacific Northwest Research Station. Report No.: PNW-GTR-443.
- Harris KF. 1979. Leafhoppers and aphid as biological vectors: vector-virus relationships. In: Maramorosch K, Harris K, editors. *Plant disease and vectors*. San Francisco (CA): Academic Press. p. 217–308.
- Krebs CJ. 1989. *Ecological methods*. New York: Harper & Row.
- Linnavuori R. 1959. Revision of the neotropical Deltoccephalinae and some related subfamilies (Homoptera). *Ann Zool Soc "Vanamo"*. 20(1):1–370.
- Lovato Echeverría R, López MG, Leguizamón ES, Vanni RO. 2013. Guía para la identificación de malezas del cultivo de arroz (*Oryza sativa* L.) en la provincia de Corrientes. Corrientes: Mave.
- MacArthur RH. 1957. On the relative abundance of bird species. *P Natl Acad Sci.* 43(3):293–295.
- Magurran AE. 2004. *Measuring biological diversity*. Oxford: Blackwell.
- Maramorosch K, Harris K, editors. 1979. *Leafhopper vectors and plant disease agents*. New York: Academic Press.
- Meneguzzi N. 2008. Caracterización molecular, taxonomía y diagnóstico de fitoplasmas del grupo Ash Yellows (VII) [PhD thesis]. [Córdoba]: Universidad Nacional de Córdoba.
- Nault L, Ammar ED. 1989. Leafhoppers and planthoppers transmission of plant viruses. *Ann Rev Entomol.* 34:503–529.
- Nielson MW. 1985. Leafhopper systematic. In: Nault LR, Rodriguez JG, editors. *The leafhoppers and planthoppers*. New York: Wiley & Sons. p. 11–39.
- Paradell S. 1995a. Estudio sistemático de los tiflocibinos argentinos del género *Empoasca* (Insecta-Homoptera-Cicadellidae). *Rev Soc Entomol Argent.* 54(1–4):113–153.
- Paradell S. 1995b. Especies argentinas de homópteros Cicadélidos asociados al cultivo de maíz *Zea mays* L. *Rev Fac Agron.* 71(2):213–234.

- Paradell S, Defea B, Dughetti A, Zárate A, Remes Lenicov AMM de. 2014. Diversity of Auchenorrhyncha (Hemiptera: Cicadellidae: Delphacidae) associated with *Vicia villosa* in Southern Buenos Aires Province, Argentina. *Fla Entomol.* 97(2):674–684.
- Paradell S, Remes Lenicov AMM de, Catalano MI, Varela G, Dellapé G, Rossi Batiz MF, Bonnot G. 2006. Cicadélidos sobre arroz y la maleza asociada en áreas productoras de la provincia de Entre Ríos, Argentina (Insecta-Hemiptera-Auchenorrhyncha). Poster session presented at: Reunión Argentina de Ciencias Naturales, IX Jornadas de Ciencias Naturales del Litoral; Paraná, Argentina.
- Paradell S, Rocca M, Defea B. 2011. Primer registro de *Syncharina lineiceps* (Hemiptera: Cicadellidae) en la Argentina. Clave para el reconocimiento de las especies del género. *Rev Soc Entomol Argent.* 70(1–2):141–145.
- Paradell S, Virla E, Toledo A. 2001. Leafhoppers species richness and abundance on corn crops in Argentina (Insecta-Hemiptera-Cicadellidae). *Bol San Veg Plagas.* 27(4):465–474.
- Peet RK. 1974. The measurement of species diversity. *Ann Rev Ecol Syst.* 5:285–307.
- Pielou EC. 1969. An introduction to mathematical ecology. New York: Wiley & Sons.
- Remes Lenicov AMM de. 1982. Aportes al conocimiento de los Agallinae argentinos (Homoptera-Cicadellidae). *Neotropica.* 28(80):125–138.
- Remes Lenicov AMM de, Mariani R, Maciá A, Toledo A, Brentassi ME, Rossi Batiz MF, Catalano MI, Paradell S. 2014. Diversity of planthoppers (Hemiptera: Fulgoromorpha) in rice associated with weeds in Argentina. *Stud Neotrop Fauna Environ.* 49(2):99–105.
- Remes Lenicov AMM de, Mariani R, Paradell S, Rossi Batiz MF, Foieri A, Bonnot G. 2006. Fulgoromorpha asociados al arroz en regiones productoras de la Argentina (Insecta-Hemiptera-Auchenorrhyncha). Poster session presented at: Reunión Argentina de Ciencias Naturales, IX Jornadas de Ciencias Naturales del Litoral; Paraná, Argentina.
- Remes Lenicov AMM de, Paradell S, Catalano MI. 2006. Hemípteros auquenorrincos perjudiciales al cultivo de sorgo en la Argentina (Insecta-Hemiptera). *RIA Rev Invest Agropecu.* 35(2):3–20.
- Remes Lenicov AMM de, Tesón A. 1985. Cicadélidos que habitan los cultivos de arroz (Homoptera-Cicadellidae). *RIA Rev Invest Agropecu.* 20(1):131–141.
- Remes Lenicov AMM de, Virla E. 1993. Homópteros auquenorrincos asociados al cultivo de trigo en la República Argentina. I. Análisis preliminar de la importancia relativa de las especies. *Stud Neotrop Fauna Environ.* 28(4):211–222.
- Siemann E, Tilman D, Haarstad J, Ritchie M. 1998. Experimental tests of the dependence of arthropod diversity on plant diversity. *Am Nat.* 152(5):738–750.
- Tesón A, Remes Lenicov AMM de, Dagoberto EL, Paradell S. 1986. Estudio de las poblaciones de delfácidos sobre maíz, avena y maleza circundante (Homoptera-Fulgoroidea). *Gaceta Agronómica.* 7(33):507–517.
- Tokeshi M. 1993. Species abundance patterns and community structure. *Adv Ecol Res.* 24:111–186.
- Wilson M, Claridge M. 1991. Handbook for the identification of leafhoppers and planthoppers of rice. Wallingford: CAB International.
- Young D. 1977. Taxonomic study of the Cicadellinae (Homoptera: Cicadellidae). Part 2. New World Cicadellini and the Genus *Cicadella*. *North Carolina Agric Exp Sta Tech Bull.* 239:1135.
- Zar JH. 1984. Biostatistical analysis. New York: Prentice-Hall.