



Contents lists available at [ScienceDirect](#)

Quaternary International

journal homepage: www.elsevier.com/locate/quaint



Corrigendum

Corrigendum to “*Tegula atra* (Lesson, 1830) (Mollusca, Gastropoda) in the marine Quaternary of Patagonia (Argentina, SW Atlantic): Biostratigraphical tool and palaeoclimate-palaeoceanographical signal” [Quat. Int. 305 (2013) 163–187]



Marina L. Aguirre ^{a, b, *}, Sebastián Richiano ^{a, c}, Mariano Donato ^{a, d}, Ester A. Farinati ^e

^a Conicet, Argentina

^b Facultad de Ciencias Naturales y Museo, Universidad Nacional de La Plata, Edificio Institutos, Cátedras y Laboratorios, Laboratorio 6, calle 64 No 3, 1900 La Plata, Argentina

^c Centro de Investigaciones Geológicas, Facultad de Ciencias Naturales y Museo, Universidad Nacional de La Plata, calle 1 No 644, 1900 La Plata, Argentina

^d Laboratorio de Sistemática y Biología Evolutiva (LASBE), Museo de La Plata, Paseo del Bosque S/N, 1900 La Plata, Argentina

^e Departamento de Geología, Universidad Nacional del Sur, Bahía Blanca, Argentina

On page 179, figure 6 and the legend for figure 6 are incomplete. For the readers' convenience, the complete figure and figure legend are below.

DOI of original article: <http://dx.doi.org/10.1016/j.quaint.2013.02.011>.

* Corresponding author. Facultad de Ciencias Naturales y Museo, Universidad Nacional de La Plata, Edificio Institutos, Cátedras y Laboratorios, Laboratorio 6, calle 64 No 3, 1900 La Plata, Argentina.

E-mail address: maguirre@fcnym.unlp.edu.ar (M.L. Aguirre).

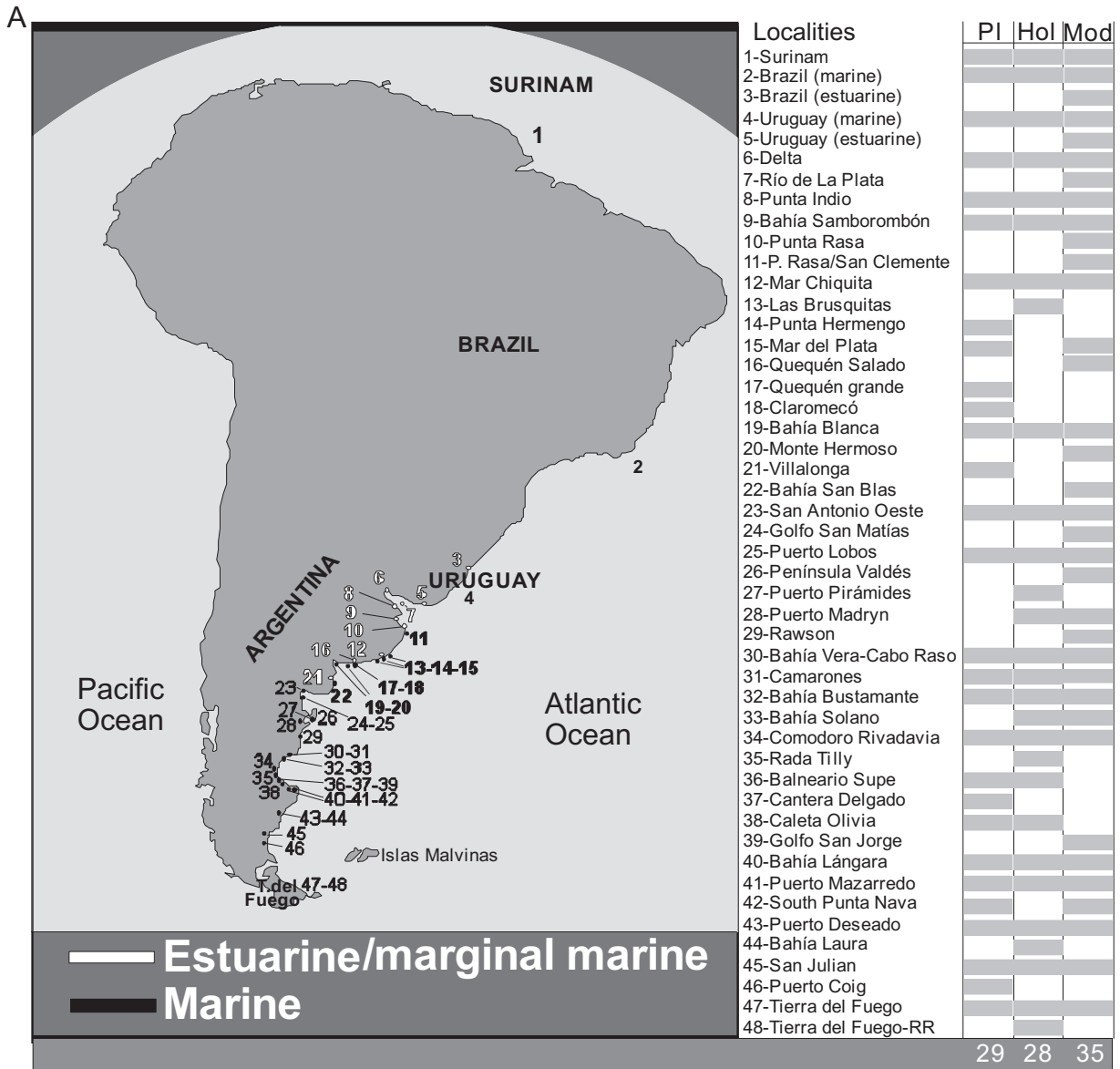


Fig. 6. Multivariate (CA, Cluster Analysis, UPGMA, Jaccard Index, PCO, Principal Coordinate Analysis) and cladistic analyses based on gastropod data matrixes for the SWA (Surinam down to Tierra del Fuego). Modern sites and fossiliferous deposits (Holocene and Pleistocene) sampled in Buenos Aires, Río Negro, Chubut and Santa Cruz provinces (Argentina) and from bibliographic sources. Details for each locality can be obtained from Feruglio (1950), Codignotto et al. (1988, 1992), Aguirre and Whatley (1995), Aguirre et al. (2008, 2009) and other references in Aguirre et al. (2011). Dataset showing the number of records and sites according to Table 3 and Supplementary Appendix 1 (geographical location and temporal range for the sites considered). A: Localities sampled in Argentina. Other areas from Southwestern Atlantic compared; B: PCO (top) and CA (beneath) through time. Results are in agreement and discriminate between three main groups: I, estuarine and marginal marine coastal sectors; II, North, oceanic Bonaerensian Northern South American sectors (Uruguay, Brazil, Surinam) and III, oceanic Patagonian area. C: PAE (Parsimony Analysis of Endemicity) showing patterns between localities for the Pleistocene (only time span with records of *Tegula atra*) compared to the present (absent). - - -: Areas of endemism (sensu Morrone, 1994). Locality areas shown in Supplementary material Appendix 1b. *Tegula atra* characterizes and is dominant in the marine Pleistocene of Patagonia, especially south of SAO (San Antonio Oeste).

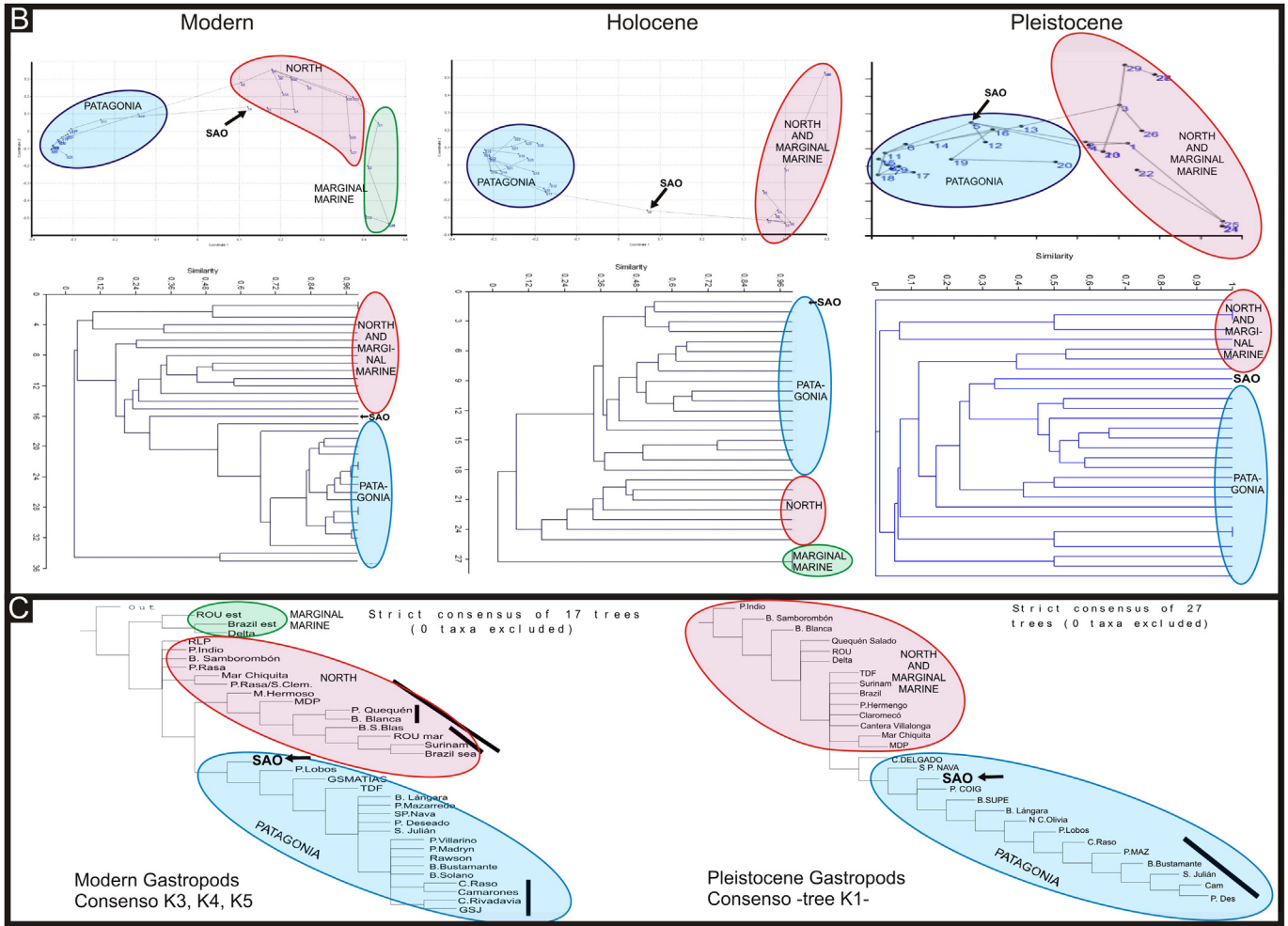


Fig. 6. (continued)