

ECOGRAPHY

Research article

Revealing the drivers of parasite community assembly: using avian haemosporidians to model global dynamics of parasite species turnover

Daniela de Angeli Dutra¹✉, Rafael Barros Pereira Pinheiro², Alan Fecchio³ and Robert Poulin¹

¹Dept of Zoology, Univ. of Otago, Dunedin, New Zealand

²Depto de Biología Animal, Univ. Estadual de Campinas, Campinas, Brazil

³Centro de Investigación Esquel de Montaña y Estepa Patagónica (CIEMEP), CONICET – Univ. Nacional de la Patagonia San Juan Bosco, Esquel, Chubut, Argentina

Correspondence: Daniela de Angeli Dutra (danideangeli@live.com)

Ecography

2023: e06634

doi: [10.1111/ecog.06634](https://doi.org/10.1111/ecog.06634)

Subject Editor:

Jean-François Guégan

Editor-in-Chief: Miguel Araújo

Accepted 4 January 2023



Why do some regions share more or fewer species than others? Community assembly relies on the ability of individuals to disperse, colonize and thrive in new regions. Therefore, many distinct factors, such as geographic distance and environmental features, can determine the odds of a species colonizing a new environment. For parasites, host community composition (i.e. resources) also plays a key role in their ability to colonize a new environment as they rely on their hosts to complete their life cycle. Thus, variation in host community composition and environmental conditions should determine parasite turnover among regions. Here, we explored the global drivers of parasite turnover using avian malaria and malaria-like (haemosporidian) parasites. We compiled global databases on avian haemosporidian lineages distributions, environmental conditions, avian species distributions and functional traits, and ran generalized dissimilarity models to uncover the main drivers of parasite turnover. We demonstrated that haemosporidian parasite turnover is mainly driven by geographic distance followed by host functional traits, environmental conditions and host distributions. The main host functional traits associated with high parasite turnover were the predominance of resident (i.e. non-migratory) species and strong territoriality, while the most important climatic drivers of haemosporidian turnover were mean temperature and temperature seasonality. Overall, we established the importance of geographic distance as a key predictor of ecological dissimilarity and showed that host resources influence parasite turnover more strongly than environmental conditions. We also evidenced that parasite turnover is most pronounced among tropical and less interconnected regions (i.e. regions with mostly territorial and non-migratory hosts). Our findings provide a robust foundation for the prediction of avian pathogen spread and the emergence of infectious diseases.

Keywords: avian haemosporidians, avian malaria, community assembly, functional and taxonomic diversity, parasite dispersal, parasite turnover



www.ecography.org

© 2023 The Authors. Ecography published by John Wiley & Sons Ltd on behalf of Nordic Society Oikos

This is an open access article under the terms of the Creative Commons Attribution License, which permits use, distribution and reproduction in any medium, provided the original work is properly cited.

Introduction

Some species are globally widespread and occur across multiple ecological communities, whereas most biodiversity is geographically restricted, but what determines species turnover among distinct regions? Niche theory predicts species inhabit a subset of conditions and resources they can tolerate and/or in which they thrive. According to [Hutchinson \(1957\)](#), a species' niche is a multidimensional space in which all environmental conditions and resources required for its persistence are met. For parasites (i.e. organisms that exploit another to complete their life cycle), however, resource limitation is mainly related to the presence of suitable hosts and, in some cases, vectors (i.e. mobile blood-feeding invertebrates involved in the transmission of pathogens ([Wilson et al. 2017](#), [Mestre et al. 2020](#))). Indeed, host specificity (i.e. spectrum of hosts a parasite can infect) has been directly linked with their geographic and environmental ranges ([Krasnov et al. 2005](#), [de Angeli Dutra et al. 2021a](#)), indicating generalist parasites are more likely to expand their range and disperse globally. Moreover, host specificity can vary across distinct climatic conditions ([Fecchio et al. 2019a](#)), suggesting parasite functional traits might shift according to habitat features. As a result, similar host communities living in similar environmental conditions should harbor similar parasite community composition ([Fecchio et al. 2019b](#)).

Nonetheless, parasite colonization and assembly are constrained by limitations other than just host species community composition. For instance, host community and parasite dissimilarity tend to increase with increasing geographic distance ([Nekola and White 1999](#), [Tuomisto et al. 2003](#), [Dallas and Poisot 2018](#), [Martins et al. 2021](#)), due to dispersal restrictions of organisms and the presence of geographic barriers ([Nekola and White 1999](#)). In the case of parasites, the ability to infect highly mobile hosts (e.g. migratory species) could expand their distribution by increasing their dispersal ability and opportunities to invade new host communities and environments ([de Angeli Dutra et al. 2021b](#), [Poulin and de Angeli Dutra 2021](#)). However, at the same time, this dispersal mechanism comes with a challenge: adaptation to new environmental conditions and resources ([Poulin and de Angeli Dutra 2021](#)). Hence, even if parasites reach a new region via host dispersal, parasite colonization could be prevented by inadequate climatic conditions and/or absence of suitable new hosts or vectors. For this reason, multiple factors can contribute to parasite community composition similarity or dissimilarity among distinct regions/communities across the globe.

Parasites comprise many of the most successful and prevalent organisms in nature, accounting for a third of the world's biodiversity ([Clayton et al. 2015](#), [Mestre et al. 2020](#)). Nonetheless, due to the nature of parasite interactions with their hosts, the drivers of parasite community composition similarity and turnover are very particular ([Mestre et al. 2020](#)). Parasites can have major impacts on community structure and energy flow through direct and indirect cascading effects on host fitness, population dynamics, ecosystem functions and extinction risk ([Dunne 2002](#), [Kuris et al.](#)

[2008](#), [Lafferty et al. 2008](#)). For these reasons, elucidating the mechanisms underpinning parasite community composition similarity and turnover among regions is important to predict parasite species distribution worldwide, estimate parasite impact on regional host communities and forecast distributional shifts in response to anthropogenic changes. For instance, limited parasite turnover could indicate that different regions are prone to colonization by multiple distinct parasite species, whereas high turnover might reflect local parasite specialization. Therefore, we aimed to identify the drivers of parasite community composition similarity and turnover worldwide, using avian malaria and malaria-like parasites as a model system.

Avian malaria and malaria-like (haemosporidian) parasites are cosmopolitan vector-borne parasites which are among the most prevalent and diverse wildlife parasites, comprising almost 4000 lineages ([Bensch et al. 2009](#)). Avian haemosporidians are mainly represented by three distinct genera: *Plasmodium*, *Haemoproteus* and *Leucocytozoon* ([Valkiūnas 2005](#)). These parasites have been intensively studied in the past two decades and represent an ideal system to investigate the mechanisms shaping parasite turnover due to the comprehensive data freely available online on parasite distribution and diversity ([Bensch et al. 2009](#)) as well as host distribution and functional traits ([Wilman et al. 2014](#), [Dufour et al. 2020](#)). Here, we test how environmental conditions (i.e. temperature and precipitation patterns) and host species distribution and functional traits (e.g. range size, territoriality, migratory status and body mass) relate to global parasite community dissimilarity while also controlling for geographic and host phylogenetic distances. We predict that 1) parasite species turnover increases as a function of increasing dissimilarity among communities (i.e. greater variation in environmental and host features) and 2) host species distribution is a key driver of parasite community composition. Our results identify the main factors shaping avian haemosporidian dissimilarity and turnover worldwide and quantify their relative importance.

Material and methods

Datasets

We obtained datasets from multiple openly available sources. Haemosporidian (i.e. *Plasmodium*, *Haemoproteus* and *Leucocytozoon*) data were extracted from MalAvi (<http://130.235.244.92/Malavi/>) ([Bensch et al. 2009](#)) using the function `extract_table` from the 'malaviR' package in R (www.r-project.org). MalAvi compiles records of haemosporidian parasites for each site sampled; sites with fewer than 10 records were excluded from the analyses. This first dataset contains information on the haemosporidian lineage identity, infected host species and site (with geographic coordinates) where each parasite lineage was recorded ([Fig. 1](#)). Bird distribution data were acquired from BirdLife International (www.birdlife.org/) ([BirdLife International and Handbook of the](#)

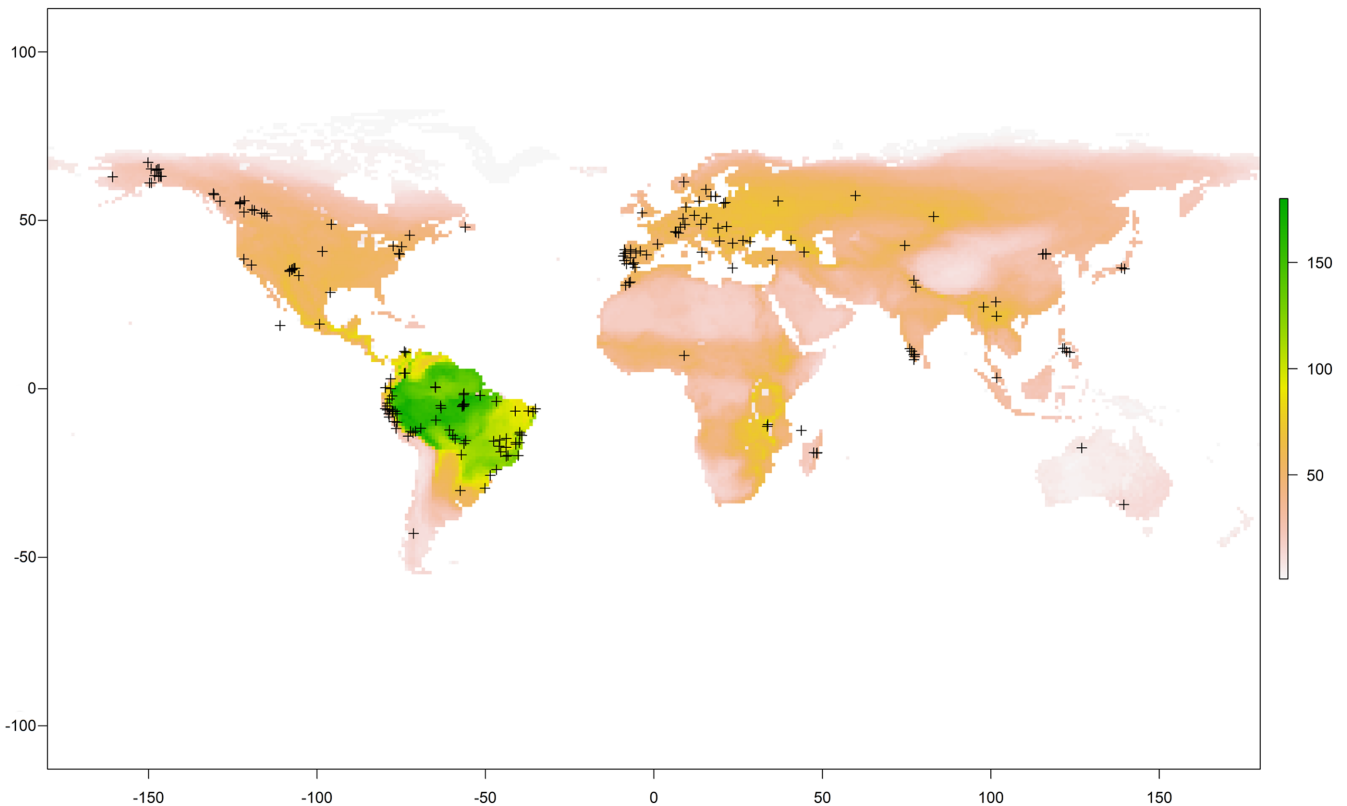


Figure 1. Sampled localities included in the analysis. Color scale illustrates spatial variation in bird species richness worldwide. Crosses depict parasite distribution from a total of 100 regions and 207 localities (including offshore islands) extracted from the MalAvi database (<http://130.235.244.92/Malavi/>).

[Birds of the World \(2020\)](#) and bird functional traits (i.e. body mass, range size and territoriality) were obtained from Open Traits datasets (<https://opentraits.org/datasets.html>) (Wilman et al. 2014). We used data published by Dufour et al. (2020) to determine bird migratory category. The authors classify migratory birds in three categories depending on the distance the species migrate (short, variable or long) or as resident species. Multiple datasets containing host functional traits data were used to allow us to explore a wider range of functional traits in our analyses. Lastly, environmental data were extracted from Wordclim (<https://worldclim.org/>) using the function *getData* from the ‘raster’ package in R and resolution equal to 10 km. This last dataset is composed of 19 distinct environmental features relating to temperature and precipitation measures. We classified each locality where haemosporidians were recorded based on their geographic coordinates by clustering localities into geographic cell grids of 5×5 degrees. We then considered those geographic cell grids as distinct geographic units, each characterized by the occurrence of particular haemosporidian lineages, bird species and their traits and environmental conditions.

Data preparation

Initially, in order to combine all three datasets, we used principal component analyses (PCA) to reduce the dimensions of

our data. We performed two PCAs: one for environmental data using all 19 variables extracted from Wordclim and a second PCA for all the functional traits. We then extracted the individual values for the first axis (53% and 72% of variance explained, respectively), which were each incorporated into the bird distribution raster file as a new layer. In order to transform all functional traits variables into a numeric format, we used the function *dummy.data.frame* from the ‘dummies’ package. This function converts a categorical variable and returns a numerical matrix. Then, we transformed each PCA into a raster format and combined them into a unique raster file. Then, we employed this new three-layer raster object as our predictor data in a unique full data model. The three predictor datasets (bird distribution, bird functional traits and environmental data) clustered in a raster file were converted into a site-pair data format using the function *formatsitepair* from the ‘gdm’ package. This function inputs geographic and other predictor data to create a site-pair table, which is the format required to run generalized dissimilarity models. This new set of site-pair data contains distance (i.e. dissimilarity) and weight columns (i.e. importance of predictors) for each variable and site. These data were then included in a single generalized dissimilarity model that evaluated 1) bird functional traits, 2) bird distribution, 3) environmental features and 4) pairwise geographic distances among sites, as predictors of haemosporidian community composition variation.

Generalized dissimilarity modeling

In order to determine the drivers of variation in haemosporidian species community composition worldwide, we employed generalized dissimilarity models (GDM) (Ferrier et al. 2007, Mokany et al. 2022) using the function *gdm* from the 'gdm' package in R. In this model, parasite community composition dissimilarity among regions was the response variable; and geographic distance, bird distribution and the first axes of the PCAs comprising both environmental conditions and bird functional traits were used as explanatory variables. After fitting the GDM, we estimated the contribution of each of the four predictor variables toward explaining the deviation of parasite dissimilarity using variation partitioning analyses. For this, we used the function *gdm.partition.deviance*. Since there is a limitation of three variables for this function we ran the analyses twice. First, we evaluated the variation explained by host functional traits, host distribution and environmental features while excluding geographic distance. Second, with the same procedure, we explored the variation explained by bird distribution and functional traits clustered together, environmental features and geographic distance. Afterwards, we assessed the significance of each predictor for each model using the function *gdm.varImp*. This function estimates the deviance explained from the fitted model and compares it to the one derived from randomized models ($n=50$). The given p-value represents the proportion of randomized models that explained better the deviance than the actual predictor data (Mokany et al. 2022). Finally, we evaluated the fit of each GDM using the function *gdm.crossvalidation*. Model fitting and individual predictors were evaluated visually and by summarizing the GDM. The height of the splines (i.e. function composed of pieces of simple functions joined to provide a suitable degree of smoothness to the GDM) illustrated the degree of parasite composition turnover among regions. All analyses were repeated for each parasite genus (i.e. *Plasmodium*, *Haemoproteus* and *Leucocytozoon*) separately.

One additional model incorporating beta phylogenetic diversity of hosts as a covariable was run. To estimate host beta phylogenetic diversity among regions we created a host occurrence matrix, downloaded a file containing 10 000 global bird phylogenetic trees (AllBirdsHackett1.tre) from <https://birdtree.org/> and randomly selected one phylogenetic tree. Then, we calculated an index of beta-diversity based on the phylogenetic distances among species present in each region and used a PCA to reduce the dimensions of our data. However, since the addition of host phylogenetic relationships did not contribute to further explain the variance in our data, they were not incorporated in most of our analyses (Results and Supporting information).

Results

Haemosporidian richness varied between five and 276 distinct lineages per regions (i.e. defined as a geographic cell grid of 5×5 degrees, $n=100$) and the maximum number of

parasite records per region was 934. In general, we observed a mean of 36 distinct parasite lineages and 71 records per region. Regional bird richness (i.e. number of bird species per region) varied from four to 349, with a mean of 97 bird species. We found that geographic distance is the main predictor of spatial shifts in parasite community composition ($p < 0.01$), followed by host functional traits ($p < 0.01$), environmental features ($p < 0.01$) and, lastly, host geographic distribution ($p=0.02$) (Fig. 2, Table 1A–C, model significance $p < 0.01$). To assess all environmental features and host functional traits in a unique model, dimension reduction was performed for both variables using PCAs. Interestingly, parasite species turnover responds differently to these predictors. For example, parasite turnover is mostly associated with temperature features (Fig. 3A), as mean temperature and temperature seasonality values (i.e. the variables that make the greatest contribution to negative and positive values in the PC1, respectively). Our results demonstrate that regions with warmer, rainier and less seasonal climate (negative values in Fig. 3A) show greater turnover of parasite lineages among localities than regions with lower temperature and precipitation, and high temperature seasonality (positive values in Fig. 3A). Dissimilarity in parasite community composition among warmer and wetter regions accounts for most of the turnover associated with environmental features (Fig. 2).

On the other hand, moderate to high host community composition dissimilarity is increasingly associated with turnover in parasite composition (Fig. 2F). Hence, regions with greater turnover of birds among localities must also present higher turnover of haemosporidians (Fig. 2F), which suggests parasite turnover increases in response to turnover of their avian hosts. Further, the main functional traits associated with haemosporidian turnover among regions were the presence of resident birds and strong territoriality; these were the traits that contributed the most to positive values in the PC1 (Fig. 3B). For those regions, shifts in the proportion of territorial and migratory birds between regions are associated with the greatest values of haemosporidian turnover. Moreover, regions harboring mostly large-bodied and/or migratory birds (i.e. the traits that present the greatest contribution to negative values in the PC1) showed the lowest rates of parasite turnover when compared to regions where birds present similar functional traits values in the PC1 (Fig. 3B). This suggests regions where migratory birds are abundant share more parasites among themselves (lower turnover) than regions harboring mostly resident birds. Naturally, regions that are the most distinct for any of the features considered also harbor the most distinct parasite fauna. In addition, we also observed a large overlap in deviance explanation among the variables analyzed, which is evidenced by the small increase in the variation explained when combining variables (Fig. 4, Table 1A, B and Supporting information). Overall, similar patterns were observed when analysing each parasite genus separately (Supporting information, models significance $p < 0.01$); however, when evaluating *Haemoproteus* and *Leucocytozoon* separately, bird distribution was not a significant predictor of haemosporidian turnover.

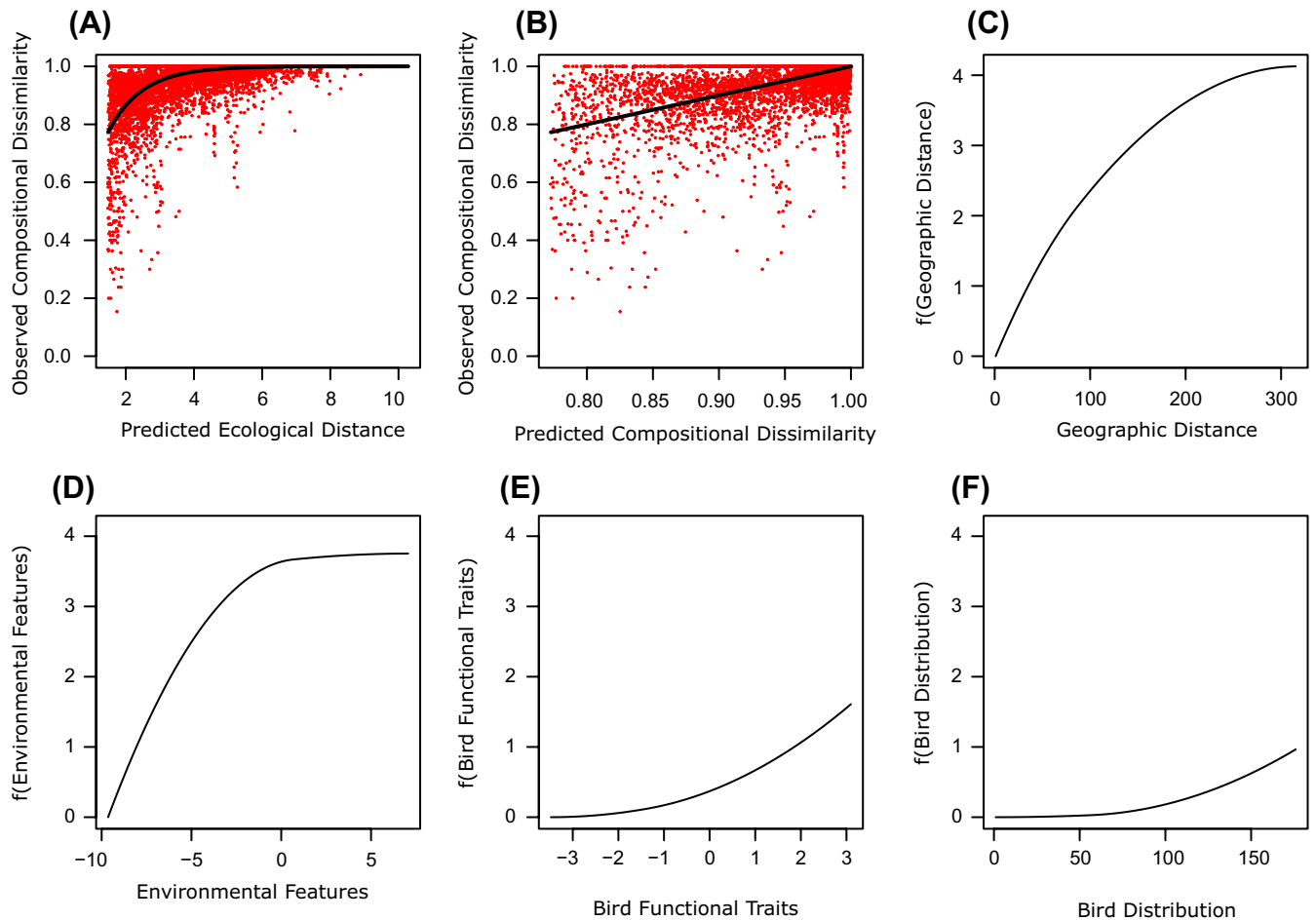


Figure 2. (A) Observed haemosporidian turnover as a function of GDM predicted ecological distance (i.e. calculated based on the dissimilarity of all variables included in the GDM – geographic distance, environmental features, bird functional traits and distribution). (B) Observed haemosporidian turnover as a function of GDM-predicted dissimilarity (i.e. expected turnover of haemosporidians). (C–F) I-splines illustrating the fitted relationship between GDM predictor variables (i.e. x-axis) and I-splines transformed variables (i.e. y-axis). Maximum height of each variable indicates the total degree of haemosporidian turnover predicted by that specific predictor. The shape of the splines illustrates the rate of turnover over each predictor gradient.

It is important to note that the addition of host beta phylogenetic diversity did not increase the amount of variation explained by our data (Supporting information). For this reason, our main models were run without taking into account the effects of host phylogenetic relationships on haemosporidian turnover. Again, the two major variables associated with haemosporidian turnover were geographic distance followed by host functional traits ($p < 0.01$).

Discussion

Species turnover and community assembly are ruled by three main filters, which include species' dispersal ability, abiotic tolerance and the pressures of interactions they face with other organisms (e.g. parasite–host interactions) (Vellend 2010). Here, we quantified the relative influence of these filters in driving parasite turnover worldwide using avian haemosporidians as a model. We found that geographic distance

was the main driver of global haemosporidian turnover, indicating that dispersal ability may be the main constraint on parasite range. We also demonstrated that avian host functional diversity is a more important determinant of parasite turnover than host distribution (particularly in the case of *Leucocytozoon* parasites, Supporting information), since bird functional traits explained parasite turnover better than bird distribution in all models. Finally, we also revealed that climatic tolerance plays a minor role in shaping parasite species community composition worldwide, as environmental features (mainly temperature) explained only 19% of the variation in our main analyses. Nonetheless, our models explained only around 33–52% of total deviance in parasite community composition, suggesting there are many other filters associated with haemosporidian turnover, possibly related with vector distribution. Overall, we show that, despite the fact that abiotic and biotic filters seem highly correlated, dispersal ability and host resources are the principal forces shaping the spatial turnover of haemosporidian parasite species.

Table 1. (A) Deviance in haemosporidian parasite composition variation explained by bird distribution ($p=0.02$), bird functional traits ($p < 0.01$) and environmental features ($p < 0.01$). (B) Deviance in haemosporidian parasite composition variation explained by bird distribution and functional traits (clustered as 'Bird data'), environmental features and geographic distance ($p < 0.01$). (C) Variable importance (i.e. percent change in deviance explained in the full model) and p -value.

Set of variables – A	Deviance explained
Bird distribution	15.38
Environmental features	19.61
Bird functional traits	31.15
Bird distribution and environmental features	25.01
Bird distribution and functional traits	33.76
Bird functional traits and environmental features	37.88
All variables	38.75
Set of variables – B	Deviance explained
Bird data	33.76
Environmental features	19.61
Geographic distance	39.23
Bird data and environmental features	38.75
Bird data and geographic distance	48.66
Environmental features and geographic distance	47.39
All variables	51.04
Set of variables – C	Importance
Geographic distance	24.09 ($p < 0.01$)
Bird distribution	0.87 ($p=0.02$)
Bird functional trait	3.98 ($p < 0.01$)
Environmental features	4.67 ($p < 0.01$)

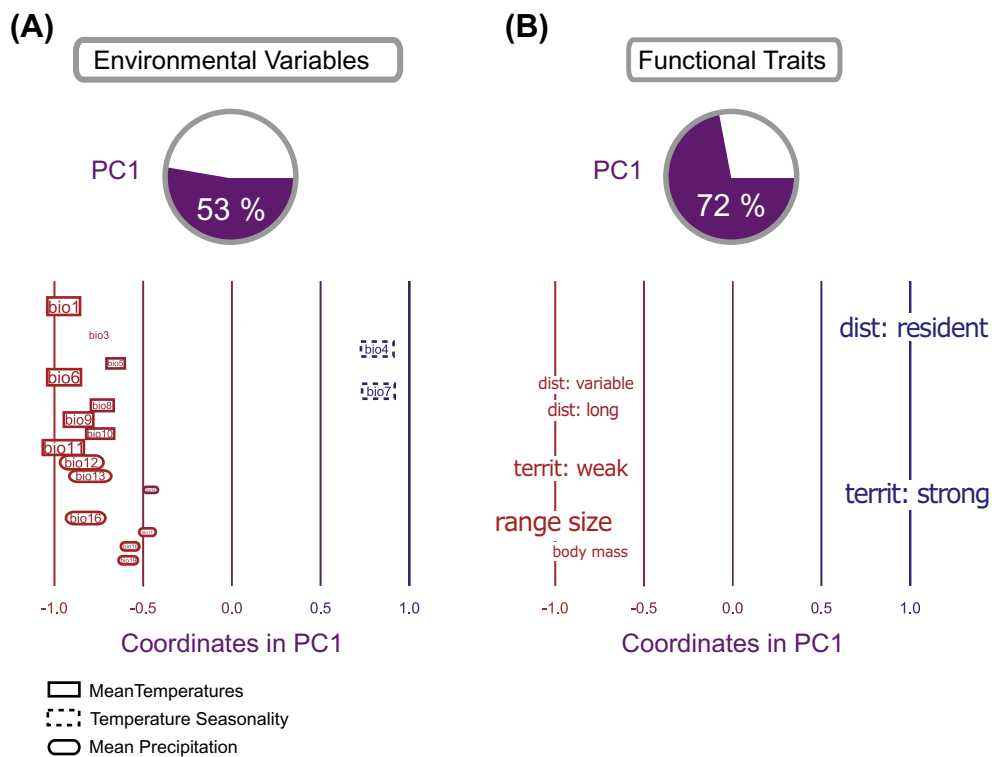


Figure 3. Contribution of each variable of principal component analyses (PCA) for (A) environmental features and (B) host functional traits variability worldwide. Font size represents the variable's contribution to the first axis of the PCA. Variables with negative values are illustrated in red whereas blue is used for variables that had positive values in the PCAs. Territ = territoriality strength, dist = migration distance. See Supporting information for contribution values for each variable. Bio2, Bio15, distance of migration short and territoriality none are not shown because their contribution was less than 1%. Vertical position of variables is arbitrary. Information regarding environmental features and host functional traits was extracted from WorldClim and OpenTraits and [Dufour et al. \(2020\)](#), respectively.

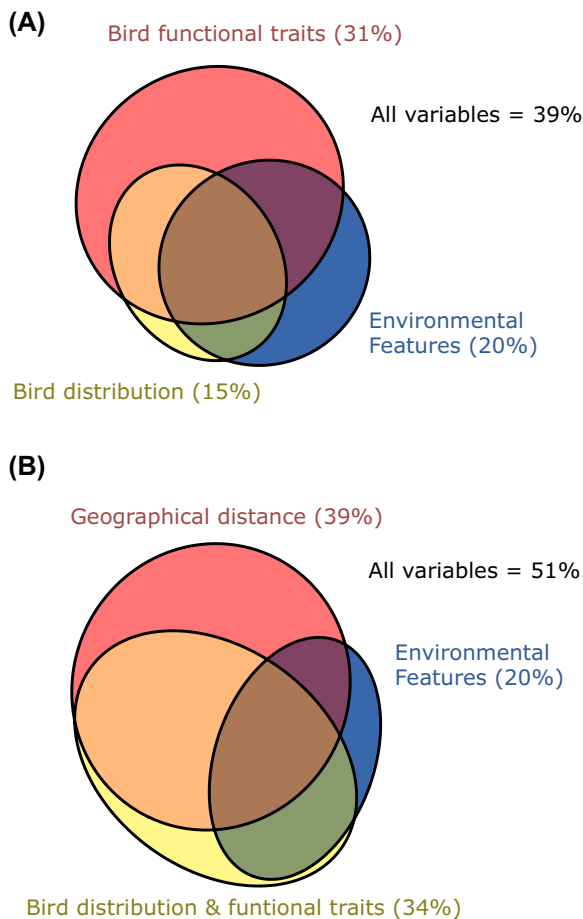


Figure 4. (A) Diagram illustrating the proportion of deviance in haemosporidian parasites turnover explained by host functional traits, environmental features and host distribution. (B) Diagram illustrating the proportion of deviance in haemosporidian parasites turnover explained by host functional traits and distribution clustered, environmental features and geographic distance.

Parasites rely on their hosts to complete their life cycle, with the presence of the latter in an area also associated with environmental features. Specifically, the range and turnover of parasites are also constrained by their hosts' tolerance to abiotic conditions (Mestre et al. 2020). Here, we demonstrated a great overlap in the deviance explained by host and environmental features. Since haemosporidians coevolve with their hosts (Pacheco et al. 2018, de Angeli Dutra et al. 2022), they are in turn constantly under selection to adapt to the environmental conditions those hosts inhabit or migrate into. Consequently, the linked effects of environmental and host features on parasite turnover might be the outcome of similar selective pressures for abiotic tolerance faced mutually by both haemosporidian parasites and their avian hosts through their evolutionary history.

Moreover, despite the large overlap in deviance explained by host functional traits and geographic distribution, the first emerges as a better predictor of parasite turnover. The two main functional traits associated with parasite turnover are the proportion of resident species in the local avian fauna

and the degree of territoriality among those species. Regions inhabited by generally larger-bodied hosts present lower haemosporidian turnover. Host body mass is positively associated with both haemosporidian prevalence (Scheuerlein and Ricklefs 2004, Filion et al. 2020, Fecchio et al. 2021) and richness (Arriero and Møller 2008), therefore the presence of large-bodied hosts can shape local parasite species composition by providing a suitable resource for multiple haemosporidian species, enabling similar parasite lineages to colonize multiple communities. A high proportion of large-bodied hosts in a broad region facilitates higher similarity of parasite lineages among localities within the region. On the other hand, migration can homogenize parasite composition through parasite dispersal (Møller and Szép 2011, Ellis et al. 2015, de Angeli Dutra et al. 2021b) and parasite–host network connectance (de Angeli Dutra et al. 2021c). A greater proportion of migrants – and, consequently, fewer resident birds – could also reduce parasite turnover because of the greater likelihood parasites will be transported among communities harboring multiple migratory host species. Thus, the mechanisms through which host functional traits structure parasite turnover vary, and distinct traits can have contrasting outcomes on parasite turnover.

Climate can also drive parasite turnover by shaping vector abundance and diversity (Benning et al. 2002, Atkinson et al. 2014, Clark et al. 2018, de La Torre et al. 2022). Here, we found that parasite turnover among regions with higher temperatures and precipitation rates, and low temperature seasonality, are the highest worldwide. This could be because haemosporidians use ectothermic hematophagous insects as vectors; as a result, these parasites must tolerate local temperatures to survive and reproduce (Valkiūnas 2005). Temperature is, therefore, the main driver of mosquito development due to its influence on metabolic rate (Chandrasegaran et al. 2020). Local temperature drives the developmental rate of vectors of haemosporidian parasites (Mordecai et al. 2013) and unsuitable temperature conditions constrain parasite sporogonic development within their vectors (Lapointe et al. 2010). Thus, parasite turnover across localities in colder and drier regions with high temperature seasonality might be lower due to temperature placing constraints on parasite and vector development, limiting the diversity of parasites capable of persisting in those environments. Overall, environmental features have the potential to shape parasite turnover by constraining direct and indirect effects on parasite, host and vector development.

Previous research has evaluated factors driving haemosporidian turnover at local and regional scales (Williamson et al. 2019, McNew et al. 2021, de La Torre et al. 2022, Fecchio et al. 2022). Some found that geographic distance was not the principal driver of parasite turnover. Instead, researchers observed that host distribution (de La Torre et al. 2022) and environmental features (Williamson et al. 2019, McNew et al. 2021) were the main determinants of dissimilarity among parasite communities. Precipitation and elevation seem the most important drivers of haemosporidian parasite turnover in the Peruvian Andes (McNew et al.

2021) and in North American sky islands mountain ranges (Williamson et al. 2019), respectively. On the other hand, de La Torre et al. (2022) also observed that host resources were the most important drivers of haemosporidian turnover in the Brazilian Atlantic Forest. However, contrary to the findings of this study, de La Torre et al. (2022) demonstrated that host community composition was a more relevant driver of parasite turnover than host functional traits. All these studies have explored haemosporidian turnover dynamics in a specific type of environment (e.g. Tropical Andes in Peru, sky island mountain ranges in the USA and Atlantic Rain Forest in Brazil); consequently, the variation in biotic and abiotic diversity expected among the sites evaluated is likely much lower than that seen at a global scale. This may explain the discrepancy between past research findings and the conclusions of the present study. Indeed, past research on large-scale parasite turnover has confirmed this pattern among haemosporidians and other parasite taxa (Dallas and Poisot 2018, Fecchio et al. 2019b, 2022, Martins et al. 2021). Therefore, geographic distance might only play an important role in shaping parasite turnover at larger scales or when there is a higher degree of heterogeneity among sites, whereas landscape and host features are the most important factors determining parasite turnover at smaller scales or among more homogeneous environmental conditions.

It is important to note, however, that the use and combination of multiple datasets comes with an increased risk of intrinsic errors, such as typos and divergence in species names (Nekola and Horsák 2022). Furthermore, data comprising bird distribution do not take into consideration the abundance of host species, which could be an important bias in our analyses. We also did not check for richness gradients directly; however, the addition of bird species distribution to the models indirectly takes this gradient into account, as bird diversity generally follows richness gradients (Jetz et al. 2012). Another relevant bias in our analyses is the concentration of haemosporidian samples in certain regions of the globe (e.g. Europe and Americas) whilst some other regions (e.g. Asia and Africa) lack data. Finally, due to absence of global data on the competent vectors of haemosporidians, our analyses could not consider vector distribution or their functional traits as well as parasite functional traits as potential determinants of haemosporidian turnover.

We demonstrated that, on a global spatial scale, avian hosts are the main predictor of the turnover of haemosporidian species across localities, after geographic distance (Table 1B). More specifically, we observed that haemosporidian species turnover among localities in regions harboring multiple migratory species is reduced, whereas this turnover is more pronounced in regions inhabited mostly by territorial and resident birds. We also demonstrated that temperature is the major climatic condition structuring haemosporidian turnover, with mean temperature values being the main factor associated with spatial shifts in haemosporidian composition. At the same time, since lower temperature values are associated with less pronounced haemosporidian turnover among localities within environmentally similar regions, temperate/high

latitude regions should present more similar parasite community composition across localities than tropical regions. We also reveal that host functional traits, distribution and climate effects on haemosporidian parasite turnover are intrinsically inter-dependent. Finally, as geographic distance is the main predictor of haemosporidian species turnover, we conclude that dispersal limitations and ecological gradients may be major forces driving variation in parasite species composition globally, followed by resource (i.e. hosts) availability.

Acknowledgments – We thank the MalAvi and Elton Traits curators for maintaining the database and for making all data available, as well as all researchers who shared their data. We are also grateful to BirdLife International for providing the data required to conduct our research.

Funding – Daniela Dutra was supported by a doctoral scholarship from the University of Otago, New Zealand. Rafael Pinheiro was supported by a postdoctoral scholarship from Fundação de Amparo à Pesquisa do Estado de São Paulo (Fapesp), Brazil (FAPESP, 2020/06771-2).

Author contributions

Daniela de Angeli Dutra: Conceptualization (lead); Data curation (lead); Formal analysis (lead); Investigation (lead); Project administration (lead); Writing – original draft (lead).

Rafael Barros Pereira Pinheiro: Formal analysis (supporting); Investigation (supporting); Methodology (supporting); Writing – review and editing (equal). **Alan Fecchio:** Conceptualization (supporting); Data curation (supporting); Writing – review and editing (equal). **Robert Poulin:** Conceptualization (supporting); Investigation (supporting); Supervision (lead); Writing – review and editing (equal).

Transparent peer review

The peer review history for this article is available at <https://publons.com/publon/10.1111/ecog.06634>.

Data availability statement

Some of the data that support the findings of this study are openly available in MalAvi (<http://130.235.244.92/Malavi/>), Open Traits datasets (<https://opentraits.org/datasets.html>) and as Supporting information for Dufour et al. (2020). BirdLife International and Handbook of the Birds of the World (2020), Bird species distribution maps of the world, ver. 2020.1, can be accessed at <http://datazone.birdlife.org/species/requestdis>. Data and R code necessary to perform our analyses are available from the Dryad Digital Repository: <https://doi.org/10.5061/dryad.w3r2280vm> (de Angeli Dutra et al. 2023).

Supporting information

The Supporting information associated with this article is available with the online version.

References

- Arriero, E. and Møller, A. P. 2008. Host ecology and life-history traits associated with blood parasite species richness in birds. – *J. Evol. Biol.* 21: 1504–1513.
- Atkinson, C. T., Uzzurum, R. B., Lapointe, D. A., Camp, R. J., Crampton, L. H., Foster, J. T. and Giambelluca, T. W. 2014. Changing climate and the altitudinal range of avian malaria in the Hawaiian Islands – an ongoing conservation crisis on the island of Kaua'i. – *Global Change Biol.* 20: 2426–2436.
- Benning, T. L., LaPointe, D., Atkinson, C. T. and Vitousek, P. M. 2002. Interactions of climate change with biological invasions and land use in the Hawaiian Islands: modeling the fate of endemic birds using a geographic information system. – *Proc. Natl Acad. Sci. USA* 99: 14246–14249.
- Bensch, S., Hellgren, O. and Pérez-Tris, J. 2009. MalAvi: a public database of malaria parasites and related haemosporidians in avian hosts based on mitochondrial cytochrome b lineages. – *Mol. Ecol. Resour.* 9: 1353–1358.
- BirdLife International and Handbook of the Birds of the World 2020. Bird species distribution maps of the world. Ver. 2020.1. – <http://datazone.birdlife.org/species/requestdis>.
- Chandrasegaran, K., Lahondère, C., Escobar, L. E. and Vinauger, C. 2020. Linking mosquito ecology, traits, behavior and disease transmission. – *Trends Parasitol.* 36: 393–403.
- Clark, N. J., Clegg, S. M., Sam, K., Goulding, W., Koane, B. and Wells, K. 2018. Climate, host phylogeny and the connectivity of host communities govern regional parasite assembly. – *Divers. Distrib.* 24: 13–23.
- Clayton, D. H., Bush, S. E. and Johnson, K. P. 2015. Coevolution of life on hosts: integrating ecology and history. – Univ. of Chicago Press.
- Dallas, T. and Poisot, T. 2018. Compositional turnover in host and parasite communities does not change network structure. – *Ecography* 41: 1534–1542.
- de Angeli Dutra, D., Moreira Félix, G. and Poulin, R. 2021a. Contrasting effects of host or local specialization: widespread haemosporidians are host generalist, whereas local specialists are locally abundant. – *Global Ecol. Biogeogr.* 30: 2467–2476.
- de Angeli Dutra, D., Filion, A., Fecchio, A., Braga, É. M. and Poulin, R. 2021b. Migrant birds disperse haemosporidian parasites and affect their transmission in avian communities. – *Oikos* 130: 979–988.
- de Angeli Dutra, D., Fecchio, A., Braga, É. M. and Poulin, R. 2021c. Haemosporidian taxonomic composition, network centrality and partner fidelity between resident and migratory avian hosts. – *Oecologia* 197: 501–509.
- de Angeli Dutra, D., Fecchio, A., Braga, É. M. and Poulin, R. 2022. Migratory behavior does not alter cophylogenetic congruence between avian hosts and their haemosporidian parasites. – *Parasitology* 49: 905–912.
- de Angeli Dutra, D., Barros Pereira Pinheiro, R., Fecchio, A. and Poulin, R. 2023. Data from: Revealing the drivers of parasite community assembly: using avian haemosporidians to model global dynamics of parasite species turnover. – Dryad Digital Repository, <https://doi.org/10.5061/dryad.w3r2280vm>.
- de La Torre, G. M., Fecchio, A., Bell, J. A. and Campião, K. M. 2022. Host evolutionary history rather than avian functional traits drives the Plasmodium regional assembly in the Atlantic Forest. – *Funct. Ecol.* 36: 1873–1886.
- Dufour, P., Descamps, S., Chantepie, S., Renaud, J., Guéguen, M., Schiffers, K., Thuiller, W. and Lavergne, S. 2020. Reconstructing the geographic and climatic origins of long-distance bird migrations. – *J. Biogeogr.* 47: 155–166.
- Dunne, J. A. 2002. Network structure and biodiversity loss in food webs: robustness increases with connectance. – *Ecol. Lett.* 5: 558–567.
- Ellis, V. A., Collins, M. D., Medeiros, M. C. I., Sari, E. H. R., Coffey, E. D., Dickerson, R. C., Lugarini, C., Stratford, J. A., Henry, D. R., Merrill, L., Matthews, A. E., Hanson, A. A., Roberts, J. R., Joyce, M., Kunkel, M. R. and Ricklefs, R. E. 2015. Local host specialization, host-switching and dispersal shape the regional distributions of avian haemosporidian parasites. – *Proc. Natl Acad. Sci. USA* 112: 11294–11299.
- Fecchio, A., Wells, K., Bell, J. A., Tkach, V. V., Lutz, H. L., Weckstein, J. D., Clegg, S. M. and Clark, N. J. 2019a. Climate variation influences host specificity in avian malaria parasites. – *Ecol. Lett.* 22: 547–557.
- Fecchio, A., Bell, J. A., Pinheiro, R. B. P., Cueto, V. R., Gorosito, C. A., Lutz, H. L., Gaiotti, M. G., Paiva, L. V., França, L. F., Toledo-Lima, G., Tolentino, M., Pinho, J. B., Tkach, V. V., Fontana, C. S., Grande, J. M., Santillán, M. A., Caparroz, R., Roos, A. L., Bessa, R., Nogueira, W., Moura, T., Nolasco, E. C., Comiche, K. J. M., Kirchgatter, K., Guimarães, L. O., Dispotto, J. H., Marini, M., Weckstein, J. D., Batalha-Filho, H. and Collins, M. D. 2019b. Avian host composition, local speciation and dispersal drive the regional assembly of avian malaria parasites in South American birds. – *Mol. Ecol.* 28: 2681–2693.
- Fecchio, A., Clark, N. J., Bell, J. A., Skeen, H. R., Lutz, H. L., de La Torre, G. M., Vaughan, J. A., Tkach, V. V., Schunck, F., Ferreira, F. C., Braga, É. M., Lugarini, C., Wamiti, W., Dispotto, J. H., Galen, S. C., Kirchgatter, K., Sagario, M. C., Cueto, V. R., González-Acuña, D., Inumaru, M., Sato, Y., Schumm, Y. R., Quillfeldt, P., Pellegrino, I., Dharmarajan, G., Gupta, P., Robin, V. V., Ciloglu, A., Yildirim, A., Huang, X., Chapa-Vargas, L., Álvarez-Mendizábal, P., Santiago-Alarcon, D., Drovetski, S. V., Hellgren, O., Voelker, G., Ricklefs, R. E., Hackett, S. J., Collins, M. D., Weckstein, J. D., Wells, K. and Kamath, P. 2021. Global drivers of avian haemosporidian infections vary across zoogeographical regions. – *Global Ecol. Biogeogr.* 30: 2393–2406.
- Fecchio, A., Dias, R. I., de La Torre, G. M., Bell, J. A., Sagario, M. C., Gorosito, C. A., dos Anjos, C. C., Lugarini, C., Piacentini, V. Q., Pinho, J. B., Kirchgatter, K., Ricklefs, R. E., Schunck, F. and Cueto, V. R. 2022. Beta diversity, prevalence and specificity of avian haemosporidian parasites throughout the annual cycle of Chilean *Elaenia* *Elaenia chilensis*, a Neotropical austral migrant. – *Parasitology* 149: 1760–1768.
- Ferrier, S., Manion, G., Elith, J. and Richardson, K. 2007. Using generalized dissimilarity modelling to analyse and predict patterns of beta diversity in regional biodiversity assessment. – *Divers. Distrib.* 13: 252–264.
- Filion, A., Eriksson, A., Jorge, F., Niebuhr, C. N. and Poulin, R. 2020. Large-scale disease patterns explained by climatic seasonality and host traits. – *Oecologia* 194: 723–733.
- Hutchinson, G. E. 1957. Concluding remarks. – *Cold Spring Harbor Symp. Quant. Biol.* 22: 415–427.
- Jetz, W., Thomas, G. H., Joy, J. B., Hartmann, K. and Mooers, A. O. 2012. The global diversity of birds in space and time. – *Nature* 491: 444–448.
- Krasnov, B. R., Poulin, R., Shenbrot, G. I., Mouillot, D. and Khokhlova, I. S. 2005. Host specificity and geographic range in haematophagous ectoparasites. – *Oikos* 108: 449–456.

- Kuris, A. M., Hechinger, R. F., Shaw, J. C., Whitney, K. L., Aguirre-Macedo, L., Boch, C. A., Dobson, A. P., Dunham, E. J., Fredensborg, B. L., Huspeni, T. C., Lorda, J., Mababa, L., Mancini, F. T., Mora, A. B., Pickering, M., Talhouk, N. L., Torchin, M. E. and Lafferty, K. D. 2008. Ecosystem energetic implications of parasite and free-living biomass in three estuaries. – *Nature* 454: 515–518.
- Lafferty, K. D., Allesina, S., Arim, M., Briggs, C. J., de Leo, G., Dobson, A. P., Dunne, J. A., Johnson, P. T. J., Kuris, A. M., Marcogliese, D. J., Martinez, N. D., Memmott, J., Marquet, P. A., McLaughlin, J. P., Mordecai, E. A., Pascual, M., Poulin, R. and Thielges, D. W. 2008. Parasites in food webs: the ultimate missing links. – *Ecol. Lett.* 11: 533–546.
- Lapointe, D. A., Goff, M. L. and Atkinson, C. T. 2010. Thermal constraints to the sporogonic development and altitudinal distribution of avian malaria *Plasmodium relictum* in Hawai'i. – *J. Parasitol.* 96: 318–324.
- Martins, P. M., Poulin, R., Gonçalves-Souza, T. and Martins, P. M. 2021. Drivers of parasite β -diversity among anuran hosts depend on scale, realm and parasite group. – *Phil. Trans. R. Soc. B* 376: 20200367.
- McNew, S. M., Barrow, L. N., Williamson, J. L., Galen, S. C., Skeen, H. R., DuBay, S. G., Gaffney, A. M., Johnson, A. B., Bautista, E., Ordoñez, P., Schmitt, C. J., Smiley, A., Valqui, T., Bates, J. M., Hackett, S. J. and Witt, C. C. 2021. Contrasting drivers of diversity in hosts and parasites across the tropical Andes. – *Proc. Natl Acad. Sci. USA* 118: e2010714118.
- Mestre, A., Poulin, R. and Hortal, J. 2020. A niche perspective on the range expansion of symbionts. – *Biol. Rev.* 95: 491–516.
- Mokany, K., Ware, C., Woolley, S. N. C., Ferrier, S. and Fitzpatrick, M. C. 2022. A working guide to harnessing generalized dissimilarity modelling for biodiversity analysis and conservation assessment. – *Global Ecol. Biogeogr.* 31: 802–821.
- Møller, A. P. and Szép, T. 2011. The role of parasites in ecology and evolution of migration and migratory connectivity. – *J. Ornithol.* 152: S141–S150.
- Mordecai, E. A., Paaijmans, K. P., Johnson, L. R., Balzer, C., Ben-Horin, T., de Moor, E., McNally, A., Pawar, S., Ryan, S. J., Smith, T. C. and Lafferty, K. D. 2013. Optimal temperature for malaria transmission is dramatically lower than previously predicted. – *Ecol. Lett.* 16: 22–30.
- Nekola, J. C. and Horsák, M. 2022. The impact of empirically unverified taxonomic concepts on ecological assemblage patterns across multiple spatial scales. – *Ecography* 2022: e06063.
- Nekola, J. C. and White, P. S. 1999. The distance decay of similarity in biogeography and ecology. – *J. Biogeogr.* 26: 867–878.
- Pacheco, M. A., Matta, N. E., Valkiūnas, G., Parker, P. G., Mello, B., Stanley, C. E., Lentino, M., Garcia-Amado, M. A., Cranfield, M., Kosakovsky Pond, S. L. and Escalante, A. A. 2018. Mode and rate of evolution of haemosporidian mitochondrial genomes: timing the radiation of avian parasites. – *Mol. Biol. Evol.* 35: 383–403.
- Poulin, R. and de Angeli Dutra, D. 2021. Animal migrations and parasitism: reciprocal effects within a unified framework. – *Biol. Rev.* 96: 1331–1348.
- Scheuerlein, A. and Ricklefs, R. E. 2004. Prevalence of blood parasites in European passeriform birds. – *Proc. R. Soc. B* 271: 1363–1370.
- Tuomisto, H., Ruokolainen, K. and Yli-Halla, M. 2003. Dispersal, environment and floristic variation of Western Amazonian forests. – *Science* 299: 241–244.
- Valkiūnas, G. 2005. Avian malaria parasites and other haemosporidia. – CRC Press.
- Vellend, M. 2010. Conceptual synthesis in community ecology. – *Quart. Rev. Biol.* 85: 183–206.
- Williamson, J. L., Wolf, C. J., Barrow, L. N., Baumann, M. J., Galen, S. C., Schmitt, C. J., Schmitt, D. C., Winter, A. S. and Witt, C. C. 2019. Ecology, not distance, explains community composition in parasites of sky-island Audubon's warblers. – *Int. J. Parasitol.* 49: 437–448.
- Wilman, H., Belmaker, J., Simpson, J., de la Rosa, C., Rivadeneira, M. M. and Jetz, W. 2014. EltonTraits 1.0: species-level foraging attributes of the world's birds and mammals. – *Ecology* 95: 2027–2027.
- Wilson, A. J., Morgan, E. R., Booth, M., Norman, R., Perkins, S. E., Hauffe, H. C., Mideo, N., Antonovics, J., McCallum, H. and Fenton, A. 2017. What is a vector? – *Phil. Trans. R. Soc. B* 372: 20160085.