

## *Piabina thomasi*

Assessment by: Alonso, F.



View on [www.iucnredlist.org](http://www.iucnredlist.org)

**Citation:** Alonso, F. 2022. *Piabina thomasi*. The IUCN Red List of Threatened Species 2022: e.T176425465A176425494. <https://dx.doi.org/10.2305/IUCN.UK.2022-2.RLTS.T176425465A176425494.en>

**Copyright:** © 2022 International Union for Conservation of Nature and Natural Resources

Reproduction of this publication for educational or other non-commercial purposes is authorized without prior written permission from the copyright holder provided the source is fully acknowledged.

Reproduction of this publication for resale, reposting or other commercial purposes is prohibited without prior written permission from the copyright holder. For further details see [Terms of Use](#).

The IUCN Red List of Threatened Species™ is produced and managed by the [IUCN Global Species Programme](#), the [IUCN Species Survival Commission \(SSC\)](#) and [The IUCN Red List Partnership](#). The IUCN Red List Partners are: [ABQ BioPark](#); [Arizona State University](#); [BirdLife International](#); [Botanic Gardens Conservation International](#); [Conservation International](#); [Missouri Botanical Garden](#); [NatureServe](#); [Re:wild](#); [Royal Botanic Gardens, Kew](#); [Sapienza University of Rome](#); [Texas A&M University](#); and [Zoological Society of London](#).

If you see any errors or have any questions or suggestions on what is shown in this document, please provide us with [feedback](#) so that we can correct or extend the information provided.

## Taxonomy

Kingdom	Phylum	Class	Order	Family
Animalia	Chordata	Actinopterygii	Characiformes	Characidae

**Scientific Name:** *Piabina thomasi* (Fowler, 1940)

### Synonym(s):

- *Bryconamericus thomasi* Fowler, 1940

### Taxonomic Source(s):

Fricke, R., Eschmeyer, W.N. and Van der Laan, R. (eds). 2020. Eschmeyer's Catalog of Fishes: genera, species, references. Updated 04 May 2020. Available at: <http://researcharchive.calacademy.org/research/ichthyology/catalog/fishcatmain.asp>.

## Assessment Information

**Red List Category & Criteria:** Vulnerable B1ab(iii) [ver 3.1](#)

**Year Published:** 2022

**Date Assessed:** December 15, 2020

### Justification:

This species is considered Vulnerable according to the criteria B1ab(iii): it has an extent of occurrence (EOO) of 19,973 km<sup>2</sup>, occurs at four threat-based locations, and there is continuing decline in the area, extent and quality of habitat due to intense anthropic activities such as agriculture, deforestation, habitat modifications, water intake, and sewage.

## Geographic Range

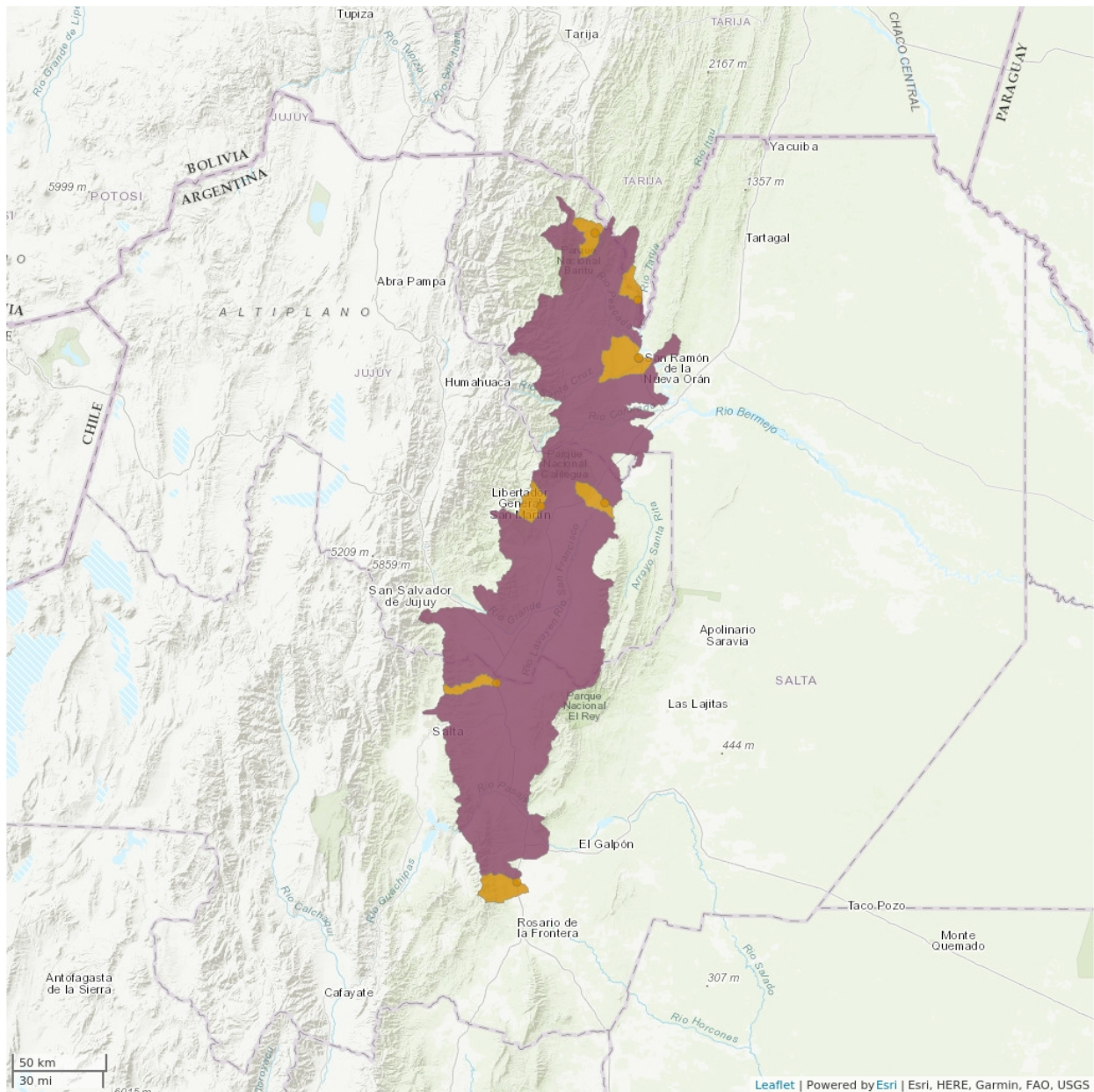
### Range Description:

This species is distributed in the upper Bermejo and Juramento basins in north-western Argentina, and southern Bolivia (Miquelarena and Aquino 1995).

### Country Occurrence:

**Native, Extant (resident):** Argentina (Jujuy, Salta); Bolivia, Plurinational States of

# Distribution Map

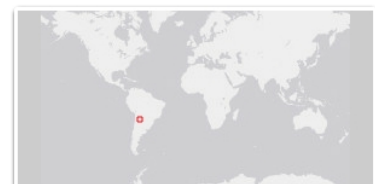


## Legend

- EXTANT (RESIDENT)
- POSSIBLY EXTANT (RESIDENT)

Compiled by:

IUCN (International Union for Conservation of Nature) 2020



The boundaries and names shown and the designations used on this map do not imply any official endorsement, acceptance or opinion by IUCN.



## Population

There are no data available on the population trend of this species.

**Current Population Trend:** Unknown

## Habitat and Ecology (see Appendix for additional information)

This species is generally found in pools with relatively slow current forming schools (F. Alonso pers. obs.).

**Systems:** Freshwater (=Inland waters)

## Use and Trade (see Appendix for additional information)

No use or trade information for this species, although it is likely to be used as bait eventually by local populations.

## Threats (see Appendix for additional information)

The area this species inhabits is under important anthropic impacts such as deforestation, agriculture, habitat modification, and water intake and discharge of sewage from cities and industries.

## Conservation Actions (see Appendix for additional information)

No conservation actions are known for this species although it is likely present in protected areas within its distribution range.

## Credits

**Assessor(s):** Alonso, F.

**Reviewer(s):** Mirande, J.M.

## Bibliography

IUCN. 2022. The IUCN Red List of Threatened Species. Version 2022-2. Available at: [www.iucnredlist.org](http://www.iucnredlist.org). (Accessed: 08 December 2022).

Miquelarena, A.M. and Aquino, A.E. 1995. Situación taxonómica y geográfica de *Bryconamericus thomasi* Fowler, 1940 (Teleostei, Characidae). *Revista Brasileira de Biologia* 55(4): 559-569.

## Citation

Alonso, F. 2022. *Piabina thomasi*. *The IUCN Red List of Threatened Species* 2022: e.T176425465A176425494. <https://dx.doi.org/10.2305/IUCN.UK.2022-2.RLTS.T176425465A176425494.en>

## Disclaimer

To make use of this information, please check the [Terms of Use](#).

## External Resources

For [Supplementary Material](#), and for [Images and External Links to Additional Information](#), please see the Red List website.

## Appendix

### Habitats

(<http://www.iucnredlist.org/technical-documents/classification-schemes>)

Habitat	Season	Suitability	Major Importance?
5. Wetlands (inland) -> 5.7. Wetlands (inland) - Permanent Freshwater Marshes/Pools (under 8ha)	-	Suitable	-

### Threats

(<http://www.iucnredlist.org/technical-documents/classification-schemes>)

Threat	Timing	Scope	Severity	Impact Score
1. Residential & commercial development -> 1.1. Housing & urban areas	Ongoing	-	-	Low impact: 3
1. Residential & commercial development -> 1.2. Commercial & industrial areas	Ongoing	-	-	Low impact: 3
1. Residential & commercial development -> 1.3. Tourism & recreation areas	Ongoing	-	-	Low impact: 3
2. Agriculture & aquaculture -> 2.1. Annual & perennial non-timber crops -> 2.1.2. Small-holder farming	Ongoing	-	-	Low impact: 3
2. Agriculture & aquaculture -> 2.1. Annual & perennial non-timber crops -> 2.1.3. Agro-industry farming	Ongoing	-	-	Low impact: 3
2. Agriculture & aquaculture -> 2.2. Wood & pulp plantations -> 2.2.1. Small-holder plantations	Ongoing	-	-	Low impact: 3
2. Agriculture & aquaculture -> 2.2. Wood & pulp plantations -> 2.2.2. Agro-industry plantations	Ongoing	-	-	Low impact: 3
2. Agriculture & aquaculture -> 2.3. Livestock farming & ranching -> 2.3.2. Small-holder grazing, ranching or farming	Ongoing	-	-	Low impact: 3
2. Agriculture & aquaculture -> 2.3. Livestock farming & ranching -> 2.3.3. Agro-industry grazing, ranching or farming	Ongoing	-	-	Low impact: 3
4. Transportation & service corridors -> 4.1. Roads & railroads	Ongoing	-	-	Low impact: 3
7. Natural system modifications -> 7.1. Fire & fire suppression -> 7.1.1. Increase in fire frequency/intensity	Ongoing	-	-	Low impact: 3

7. Natural system modifications -> 7.2. Dams & water management/use -> 7.2.1. Abstraction of surface water (domestic use)	Ongoing	-	-	Low impact: 3
7. Natural system modifications -> 7.2. Dams & water management/use -> 7.2.2. Abstraction of surface water (commercial use)	Ongoing	-	-	Low impact: 3
7. Natural system modifications -> 7.2. Dams & water management/use -> 7.2.3. Abstraction of surface water (agricultural use)	Ongoing	-	-	Low impact: 3
7. Natural system modifications -> 7.2. Dams & water management/use -> 7.2.5. Abstraction of ground water (domestic use)	Ongoing	-	-	Low impact: 3
7. Natural system modifications -> 7.2. Dams & water management/use -> 7.2.6. Abstraction of ground water (commercial use)	Ongoing	-	-	Low impact: 3
7. Natural system modifications -> 7.2. Dams & water management/use -> 7.2.7. Abstraction of ground water (agricultural use)	Ongoing	-	-	Low impact: 3
7. Natural system modifications -> 7.2. Dams & water management/use -> 7.2.8. Abstraction of ground water (unknown use)	Ongoing	-	-	Low impact: 3
7. Natural system modifications -> 7.2. Dams & water management/use -> 7.2.9. Small dams	Ongoing	-	-	Low impact: 3
7. Natural system modifications -> 7.2. Dams & water management/use -> 7.2.10. Large dams	Ongoing	-	-	Low impact: 3
9. Pollution -> 9.1. Domestic & urban waste water -> 9.1.1. Sewage	Ongoing	-	-	Low impact: 3
9. Pollution -> 9.1. Domestic & urban waste water -> 9.1.2. Run-off	Ongoing	-	-	Low impact: 3
9. Pollution -> 9.3. Agricultural & forestry effluents -> 9.3.1. Nutrient loads	Ongoing	-	-	Low impact: 3
9. Pollution -> 9.3. Agricultural & forestry effluents -> 9.3.2. Soil erosion, sedimentation	Ongoing	-	-	Low impact: 3
9. Pollution -> 9.3. Agricultural & forestry effluents -> 9.3.3. Herbicides and pesticides	Ongoing	-	-	Low impact: 3
9. Pollution -> 9.4. Garbage & solid waste	Ongoing	-	-	Low impact: 3

## Conservation Actions in Place

(<http://www.iucnredlist.org/technical-documents/classification-schemes>)

<b>Conservation Action in Place</b>
In-place research and monitoring

<b>Conservation Action in Place</b>
Action Recovery Plan: No
Systematic monitoring scheme: No
In-place land/water protection
Conservation sites identified: No
Percentage of population protected by PAs: 1-10
Occurs in at least one protected area: Yes
Invasive species control or prevention: Not Applicable
In-place species management
Harvest management plan: No
Successfully reintroduced or introduced benignly: No
Subject to ex-situ conservation: No
In-place education
Subject to recent education and awareness programmes: No
Included in international legislation: No
Subject to any international management / trade controls: No

## Conservation Actions Needed

(<http://www.iucnredlist.org/technical-documents/classification-schemes>)

<b>Conservation Action Needed</b>
1. Land/water protection -> 1.1. Site/area protection
1. Land/water protection -> 1.2. Resource & habitat protection
2. Land/water management -> 2.1. Site/area management
2. Land/water management -> 2.3. Habitat & natural process restoration
4. Education & awareness -> 4.1. Formal education
4. Education & awareness -> 4.2. Training
4. Education & awareness -> 4.3. Awareness & communications

## Research Needed

(<http://www.iucnredlist.org/technical-documents/classification-schemes>)

<b>Research Needed</b>
1. Research -> 1.1. Taxonomy



<b>Research Needed</b>
1. Research -> 1.2. Population size, distribution & trends
1. Research -> 1.3. Life history & ecology
1. Research -> 1.5. Threats
1. Research -> 1.6. Actions
2. Conservation Planning -> 2.2. Area-based Management Plan
3. Monitoring -> 3.1. Population trends
3. Monitoring -> 3.2. Harvest level trends
3. Monitoring -> 3.3. Trade trends
3. Monitoring -> 3.4. Habitat trends

## Additional Data Fields

<b>Distribution</b>
Estimated area of occupancy (AOO) (km <sup>2</sup> ): 2284
Estimated extent of occurrence (EOO) (km <sup>2</sup> ): 19973
Number of Locations: 4
Lower elevation limit (m): 350
Upper elevation limit (m): 859
<b>Population</b>
Continuing decline of mature individuals: Unknown
Extreme fluctuations: Unknown
Population severely fragmented: Unknown
Continuing decline in subpopulations: Unknown
Extreme fluctuations in subpopulations: Unknown
All individuals in one subpopulation: No
<b>Habitats and Ecology</b>
Continuing decline in area, extent and/or quality of habitat: Yes
Movement patterns: Not a Migrant

## The IUCN Red List Partnership



The IUCN Red List of Threatened Species™ is produced and managed by the [IUCN Global Species Programme](#), the [IUCN Species Survival Commission \(SSC\)](#) and [The IUCN Red List Partnership](#).

The IUCN Red List Partners are: [ABQ BioPark](#); [Arizona State University](#); [BirdLife International](#); [Botanic Gardens Conservation International](#); [Conservation International](#); [Missouri Botanical Garden](#); [NatureServe](#); [Re:wild](#); [Royal Botanic Gardens, Kew](#); [Sapienza University of Rome](#); [Texas A&M University](#); and [Zoological Society of London](#).