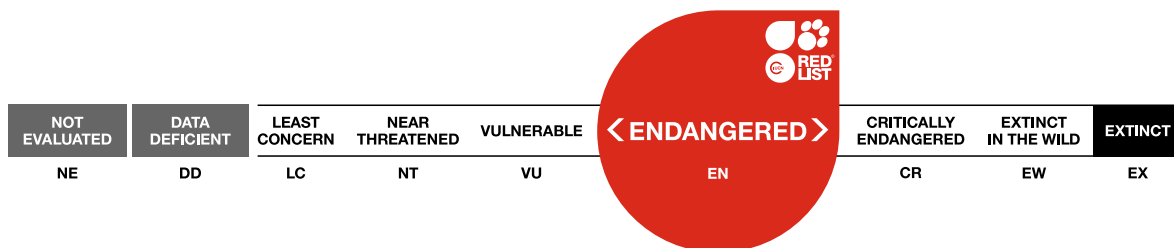


Jenynsia maculata, Onesided Livebearer

Assessment by: Alonso, F.



View on www.iucnredlist.org

Citation: Alonso, F. 2022. *Jenynsia maculata*. *The IUCN Red List of Threatened Species 2022*: e.T176397604A176397609. <https://dx.doi.org/10.2305/IUCN.UK.2022-2.RLTS.T176397604A176397609.en>

Copyright: © 2022 International Union for Conservation of Nature and Natural Resources

Reproduction of this publication for educational or other non-commercial purposes is authorized without prior written permission from the copyright holder provided the source is fully acknowledged.

Reproduction of this publication for resale, reposting or other commercial purposes is prohibited without prior written permission from the copyright holder. For further details see [Terms of Use](#).

The IUCN Red List of Threatened Species™ is produced and managed by the [IUCN Global Species Programme](#), the [IUCN Species Survival Commission \(SSC\)](#) and [The IUCN Red List Partnership](#). The IUCN Red List Partners are: [ABQ BioPark](#); [Arizona State University](#); [BirdLife International](#); [Botanic Gardens Conservation International](#); [Conservation International](#); [Missouri Botanical Garden](#); [NatureServe](#); [Re:wild](#); [Royal Botanic Gardens, Kew](#); [Sapienza University of Rome](#); [Texas A&M University](#); and [Zoological Society of London](#).

If you see any errors or have any questions or suggestions on what is shown in this document, please provide us with [feedback](#) so that we can correct or extend the information provided.

Taxonomy

Kingdom	Phylum	Class	Order	Family
Animalia	Chordata	Actinopterygii	Cyprinodontiformes	Anablepidae

Scientific Name: *Jenynsia maculata* Regan, 1906

Common Name(s):

- English: Onesided Livebearer
- Spanish; Castilian: Madrecita

Taxonomic Source(s):

Fricke, R., Eschmeyer, W.N. and Van der Laan, R. (eds). 2020. Eschmeyer's Catalog of Fishes: genera, species, references. Updated 04 May 2020. Available at: <http://researcharchive.calacademy.org/research/ichthyology/catalog/fishcatmain.asp>.

Assessment Information

Red List Category & Criteria: Endangered B1ab(iii) [ver 3.1](#)

Year Published: 2022

Date Assessed: November 11, 2020

Justification:

Jenynsia maculata is considered as Endangered according to the criteria B1ab(iii). The extent of occurrence is estimated to be less than 5,000 km² (3,749 km²), it is known to exist at no more than five locations (two), and there is a continuing decline inferred in quality of habitat due mainly to exotic species (*Oncorhynchus mykiss*) presence and human population impacts (sewage) and agriculture.

Geographic Range

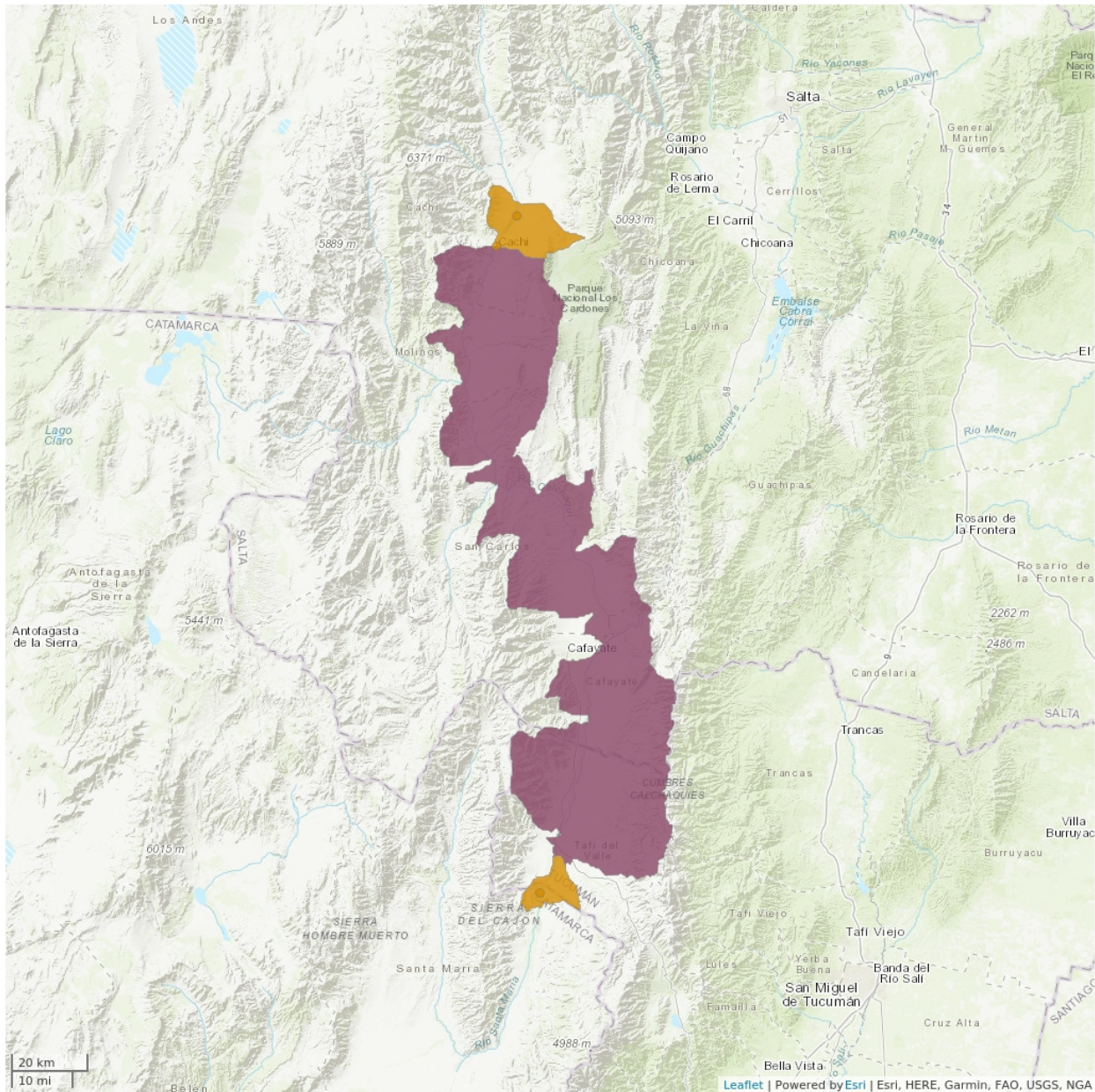
Range Description:

This species is abundant in the Calchaquí and Santa María river basins, in the upper Juramento basin in north-western Argentina.

Country Occurrence:

Native, Extant (resident): Argentina (Catamarca, Salta, Tucumán)

Distribution Map

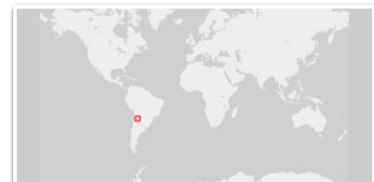


Legend

- EXTANT (RESIDENT)
- POSSIBLY EXTANT (RESIDENT)

Compiled by:

IUCN (International Union for Conservation of Nature) 2020



The boundaries and names shown and the designations used on this map do not imply any official endorsement, acceptance or opinion by IUCN.



Population

This species is relatively abundant along its natural range of distribution although there are no studies with respect to the population size and parameters.

Current Population Trend: Unknown

Habitat and Ecology (see Appendix for additional information)

This species inhabits secondary branches with low current and abundant aquatic vegetation (F. Alonso pers. obs. 2020).

Systems: Freshwater (=Inland waters)

Use and Trade

This species is sometimes consumed as a food by local human populations.

Threats (see Appendix for additional information)

There is a exotic species *Oncorhynchus mykiss* in this area that is likely predated this species. Also the use of water for agriculture and water sewage discharges from local human populations are present as the main threats for this species.

Conservation Actions (see Appendix for additional information)

There are no conservation actions in place for this species.

Credits

Assessor(s): Alonso, F.

Reviewer(s): Aguilera, G.

Bibliography

IUCN. 2022. The IUCN Red List of Threatened Species. Version 2022-2. Available at: www.iucnredlist.org. (Accessed: 08 December 2022).

Monasterio de Gonzo, G. 2003. Peces de los ríos Bermejo, Juramento y Cuencas Endorreicas de la Provincia de Salta. . *Museo de Ciencias Naturales y Consejo de Investigación Universidad Nacional de Salta: Salta.*: 243.

Citation

Alonso, F. 2022. *Jenynsia maculata*. *The IUCN Red List of Threatened Species 2022*: e.T176397604A176397609. <https://dx.doi.org/10.2305/IUCN.UK.2022-2.RLTS.T176397604A176397609.en>

Disclaimer

To make use of this information, please check the [Terms of Use](#).

External Resources

For [Supplementary Material](#), and for [Images and External Links to Additional Information](#), please see the Red List website.

Appendix

Habitats

(<http://www.iucnredlist.org/technical-documents/classification-schemes>)

Habitat	Season	Suitability	Major Importance?
5. Wetlands (inland) -> 5.1. Wetlands (inland) - Permanent Rivers/Streams/Creeks (includes waterfalls)	Resident	Suitable	Yes

Use and Trade

(<http://www.iucnredlist.org/technical-documents/classification-schemes>)

End Use	Local	National	International
1. Food - human	Yes	No	No

Threats

(<http://www.iucnredlist.org/technical-documents/classification-schemes>)

Threat	Timing	Scope	Severity	Impact Score
2. Agriculture & aquaculture -> 2.1. Annual & perennial non-timber crops -> 2.1.2. Small-holder farming	Ongoing	-	-	Low impact: 3
2. Agriculture & aquaculture -> 2.3. Livestock farming & ranching -> 2.3.2. Small-holder grazing, ranching or farming	Ongoing	-	-	Low impact: 3
7. Natural system modifications -> 7.1. Fire & fire suppression -> 7.1.1. Increase in fire frequency/intensity	Ongoing	-	-	Low impact: 3
8. Invasive and other problematic species, genes & diseases -> 8.1. Invasive non-native/alien species/diseases -> 8.1.2. Named species (Oncorhynchus mykiss)	Ongoing	-	-	Low impact: 3
9. Pollution -> 9.1. Domestic & urban waste water -> 9.1.1. Sewage	Ongoing	-	-	Low impact: 3
9. Pollution -> 9.3. Agricultural & forestry effluents -> 9.3.1. Nutrient loads	Ongoing	-	-	Low impact: 3
9. Pollution -> 9.3. Agricultural & forestry effluents -> 9.3.2. Soil erosion, sedimentation	Ongoing	-	-	Low impact: 3
9. Pollution -> 9.3. Agricultural & forestry effluents -> 9.3.3. Herbicides and pesticides	Ongoing	-	-	Low impact: 3
9. Pollution -> 9.4. Garbage & solid waste	Ongoing	-	-	Low impact: 3

11. Climate change & severe weather -> 11.2. Droughts	Ongoing	-	-	Low impact: 3
---	---------	---	---	---------------

Conservation Actions in Place

(<http://www.iucnredlist.org/technical-documents/classification-schemes>)

Conservation Action in Place
In-place research and monitoring
Action Recovery Plan: No
Systematic monitoring scheme: No
In-place land/water protection
Conservation sites identified: No
Percentage of population protected by PAs: 0
Area based regional management plan: No
Occurs in at least one protected area: No
Invasive species control or prevention: No
In-place species management
Harvest management plan: No
Successfully reintroduced or introduced benignly: No
Subject to ex-situ conservation: No
In-place education
Subject to recent education and awareness programmes: No
Included in international legislation: No
Subject to any international management / trade controls: No

Conservation Actions Needed

(<http://www.iucnredlist.org/technical-documents/classification-schemes>)

Conservation Action Needed
1. Land/water protection -> 1.1. Site/area protection
1. Land/water protection -> 1.2. Resource & habitat protection
2. Land/water management -> 2.2. Invasive/problematic species control
2. Land/water management -> 2.3. Habitat & natural process restoration
4. Education & awareness -> 4.1. Formal education

Conservation Action Needed
4. Education & awareness -> 4.2. Training
4. Education & awareness -> 4.3. Awareness & communications
5. Law & policy -> 5.1. Legislation -> 5.1.2. National level
5. Law & policy -> 5.1. Legislation -> 5.1.3. Sub-national level

Research Needed

(<http://www.iucnredlist.org/technical-documents/classification-schemes>)

Research Needed
1. Research -> 1.2. Population size, distribution & trends
1. Research -> 1.3. Life history & ecology
1. Research -> 1.4. Harvest, use & livelihoods
1. Research -> 1.5. Threats
1. Research -> 1.6. Actions
2. Conservation Planning -> 2.1. Species Action/Recovery Plan
2. Conservation Planning -> 2.2. Area-based Management Plan
2. Conservation Planning -> 2.3. Harvest & Trade Management Plan
3. Monitoring -> 3.1. Population trends
3. Monitoring -> 3.2. Harvest level trends
3. Monitoring -> 3.3. Trade trends
3. Monitoring -> 3.4. Habitat trends

Additional Data Fields

Distribution
Estimated area of occupancy (AOO) (km ²): 572
Continuing decline in area of occupancy (AOO): No
Extreme fluctuations in area of occupancy (AOO): No
Estimated extent of occurrence (EOO) (km ²): 3749
Continuing decline in extent of occurrence (EOO): No
Extreme fluctuations in extent of occurrence (EOO): No
Number of Locations: 2
Continuing decline in number of locations: No

Distribution
Extreme fluctuations in the number of locations: No
Lower elevation limit (m): 1,836
Upper elevation limit (m): 2,435
Population
Population severely fragmented: Unknown
Continuing decline in subpopulations: No
Extreme fluctuations in subpopulations: No
All individuals in one subpopulation: No
Habitats and Ecology
Continuing decline in area, extent and/or quality of habitat: Yes
Movement patterns: Not a Migrant

The IUCN Red List Partnership



The IUCN Red List of Threatened Species™ is produced and managed by the [IUCN Global Species Programme](#), the [IUCN Species Survival Commission \(SSC\)](#) and [The IUCN Red List Partnership](#).

The IUCN Red List Partners are: [ABQ BioPark](#); [Arizona State University](#); [BirdLife International](#); [Botanic Gardens Conservation International](#); [Conservation International](#); [Missouri Botanical Garden](#); [NatureServe](#); [Re:wild](#); [Royal Botanic Gardens, Kew](#); [Sapienza University of Rome](#); [Texas A&M University](#); and [Zoological Society of London](#).