

# BIRD COMMUNITY RESPONSES TO URBANIZATION IN A MEDIUM-SIZED ARGENTINE CITY: SANTO TOMÉ (SANTA FE PROVINCE) AS A CASE STUDY

MAXIMILIANO A CRISTALDI<sup>1,3\*</sup>, JUAN A SARQUIS<sup>1,2\*</sup>, LUCAS M LEVEAU<sup>3</sup>, ALEJANDRO R GIRAUDO<sup>1,2</sup>

<sup>1</sup>Facultad de Humanidades y Ciencias, Universidad Nacional del Litoral, Paraje El Pozo s/n, Ciudad Universitaria, 3000 Santa Fe, Argentina.

<sup>2</sup>Laboratorio de Biodiversidad y Conservación de Tetrápodos Terrestres, Instituto Nacional de Limnología, (CONICET-UNL), Paraje El Pozo s/n, Ciudad Universitaria, 3000 Santa Fe, Argentina.

<sup>3</sup>Departamento de Ecología, Genética y Evolución, Facultad de Ciencias Exactas y Naturales, Universidad de Buenos Aires-IEGEB (CONICET-UBA), Ciudad Universitaria, Pab 2, Piso 4, Buenos Aires 1426, Argentina.

\* Maximiliano Ariel Cristaldi (maximilianocristaldi@yahoo.com.ar), Juan Andrés Sarquis (juandres.sarquis@gmail.com)

**ABSTRACT.**- Urbanization transforms the landscape and consequently affects biodiversity. Cities are heterogeneous landscapes due to a differential distribution of human activities, infrastructure, and vegetation composition. Bird assemblages vary according to such variations. In Argentina, assessments of the effect of urbanization on bird assemblages come from large capital cities, whereas in intermediate-size cities studies are scarce. Intermediate-size cities present higher growth rates than capital cities. Studies on the effect of Urban Land Uses (ULU) can contribute to the planning of urban growth. We evaluated the variation in taxonomic diversity of bird assemblages at different ULUs in Santo Tomé, an Argentine city of 66 133 inhabitants. We performed bird counts in seven ULUs (the centre, the suburban sector, the peri-urban sector, small urban parks, the military base, the riverside walkway, and the urban reserve). In each ULU, we located 10 transects of 100 m long x 50 m wide. In each transect we recorded bird species and their abundance and the number of pedestrians and vehicles. Taxonomic diversity varied among the different ULUs. The centre presented the lowest richness and diversity, in contrast to the highest values for these variables found in the riverside walkway and the urban reserve. The rest of the ULU presented intermediate levels of richness and diversity. The structure and composition of bird assemblages varied among ULUs. Our study reinforces the importance of ULU characterized by high vegetation cover, low levels of human activity, and with vegetation management for conservation purposes.

**KEYWORDS:** *birds, human disturbance, species composition, species richness, urban land use*

**RESUMEN.**- RESPUESTA DE LAS COMUNIDADES DE AVES A LA URBANIZACIÓN EN UNA CIUDAD DE TAMAÑO MEDIANO: SANTO TOMÉ (PROVINCIA DE SANTA FE) COMO UN CASO DE ESTUDIO. La urbanización es un proceso de transformación del paisaje que afecta a la biodiversidad. Las ciudades constituyen un paisaje heterogéneo debido a una distribución diferencial de las actividades humanas, de la infraestructura y composición vegetal. Las comunidades de aves varían según tales variaciones. En Argentina, existen evaluaciones sobre las comunidades de aves principalmente en ciudades capitales grandes, mientras que en ciudades intermedias los estudios son escasos. Las ciudades intermedias presentan mayores tasas de crecimiento que las ciudades capitales. Estudios sobre el efecto de los Usos de Suelo Urbanos (USU) pueden contribuir con la planificación del crecimiento urbano. Evaluamos la variación en la diversidad taxonómica de las comunidades de aves entre diferentes USU en Santo Tomé, una ciudad argentina de 66 133 habitantes. Realizamos conteos de aves en siete USU (centro, suburbano, periurbano, plazas, base militar, costanera y reserva urbana). En cada USU, ubicamos 10 transectas de 100 m de largo x 50 m de ancho. En cada transecta registramos la riqueza y abundancia de aves y la cantidad de peatones y vehículos. La diversidad taxonómica varió entre los diferentes USU. El centro presentó la menor riqueza y diversidad, en contraposición con la costanera y la reserva urbana. El resto de los USU presentaron niveles intermedios de riqueza y diversidad. La estructura y composición de las comunidades de aves son sensibles al tipo de USU. Nuestro estudio enfatiza la importancia de usos caracterizados por una alta cobertura vegetal, baja actividad humana y manejo de la vegetación con objetivo de conservación.

**PALABRAS CLAVE:** *aves, composición, disturbio antrópico, riqueza, uso de suelo urbano*

*Recibido: 21 de julio de 2022; Aceptado: 24 de noviembre de 2022*

Urbanization is a major and increasing cause of biodiversity loss worldwide (McDonald et al. 2018). Urban areas are one of the fastest growing habitats in both spatial coverage and ecological impact (Grimm et al. 2008). Therefore, the analysis of the effect of urbanization on biodiversity is imperative to design sustainable cities.

Birds have been widely used in urban studies because they have high taxonomic diversity (Jetz et al. 2012), represent one of the best-known wildlife groups (Schulze et al. 2004), are relatively easily to survey (Ralph et al. 1995), and quickly respond to modifications in their habitats (Marzluff et al. 2001, Aronson et al. 2014). In general, studies have

analyzed the effect of urbanization on bird communities through the comparison of land uses with different levels of urbanization (Blair 1996, Leveau and Leveau 2004, Villegas and Garitano-Zavala 2010). Some studies have found a peak of bird diversity at moderately urbanized land uses (Blair 1996, Marzluff 2005, Tratalos et al. 2007, Leveau 2019), probably because of an increase in habitat diversity and resources availability in suburban areas (Leveau 2019). Habitat diversity and resources promote high bird diversity, allowing the presence of bird niche specialists (Hurlbert 2004). On the other hand, other studies have found a negative relationship between urbanization and bird diversity (Ortega-Álvarez and MacGregor-Fors 2009, Villegas and Garitano-Zavala 2010, Batáry et al. 2018), probably because of a continuous decrease of habitat diversity and resources at higher levels of urbanization. In general, this negative association between bird diversity and urbanization has been found in tropical and subtropical areas (Koh et al. 2006, Leveau et al. 2017, Filloy et al. 2019), where urban habitats are compared with forest, which have a higher habitat diversity and primary productivity.

Urbanization has significant effects on bird species composition (Leveau and Zuria 2017). Although urban bird communities are mainly composed of native species (Aronson et al. 2014), the most urbanized areas within cities are usually dominated by a few cosmopolitan species, such as the Rock Dove (*Columba livia*) and the House Sparrow (*Passer domesticus*) (Leveau and Zuria 2017). These species are able to exploit urban environments given that they feed on food discarded by humans and nest in buildings. The replacement of native species by a few widespread species has been called biotic homogenization (McKinney and Lockwood 1999).

Among tropical and subtropical regions, Latin America has recently gained presence in the urban bird literature (Ortega-Álvarez and MacGregor-Fors 2011a, 2011b). This region shelters an important proportion of global avifauna (BirdLife International 2013), encompassing important hotspots for birds (Mittermeier et al. 2011), which are currently exposed to high urbanization rates. Also, most studies are carried out in big or capital cities ignoring small or medium-sized cities where high population growth rates are expected to take place (United Nations 2015, Kendal et al. 2020). More studies in these types of cities are needed to find useful information to develop management and conservation actions (Allred et al. 2021).

In this context, the aim of the current study was to determine the effect of urbanization on birds' diversity and composition in a medium-sized Argentine city located in a biogeographic transition zone between an open xerophytic forest and a riparian subtropical forest (Oyarzabal et al. 2018). We expected a negative relationship between urbanization and bird diversity. In addition, we expected a dominance of exotic species in the most urbanized areas.

## METHODS

### Study Area

The study was performed in the city of Santo Tomé (31°40'0" S, 60°46'0" W) (Fig. 1). The city covers an approximate area of 79 km<sup>2</sup> and houses 66 133 people (INDEC 2010). The weather is temperate with a mean daily temperature of about 19.5°C and approximate annual rainfall of 990.4 mm (National Meteorological Services, <http://www.smn.gov.ar/>). The city is bordered by the Salado River at the east. The topography is flat. The major native vegetation types in Santo Tomé are included in the Paranaense (Interior Atlantic Forest) and Espinal phytogeographic province confluence. The area is strongly influenced by the flood valley of the Paraná River, which is composed of subtropical wet forest and gallery forest. The most abundant species in such area are *Salix humboldtiana*, *Tessaria integrifolia*, *Nectandra angustifolia*, *Albizia inundata*, *Erythrina crista-galli* and different types of flooded savannahs and wetlands (rivers, streams, and ponds) (Cabrera 1994, Arzamendia and Giraudo 2004).

*Urban land use types.* Firstly, we identified urban land uses with different levels of urbanization in the city of Santo Tomé by visual inspection of satellite images available on Google Earth and our knowledge about the urban matrix. The visual inspection of satellite images allowed us to detect potential differences in habitat structure according to the coverage of built surface, vegetation, unpaved soil, and water. Thus, we decided to analyze the following urban land uses which correspond to a decreasing level of urbanization: (1) the centre of the city, (2) the suburban sector, (3) the peri-urban sector, (4) small urban parks, (5) the military base, (6) the riverside walkway and (7) the urban reserve (Blair 1996, Filloy et al. 2019). The centre of the city consisted of commercial and administrative areas where buildings predominate, and green spaces are scarce. The suburban sector was character-

rized by moderate to high-density, single-family housing within the urban matrix, with lawned sidewalks, yards, and paved roads. The peri-urban sector was located on the boundaries of the city, composed of single-family housing with yards and unpaved roads, near rural zones and green areas. Small urban parks were represented by public green areas smaller than 1.5 ha. The Santo Tomé's riverside walkway was composed of detached houses located within the urban matrix, with lawned sidewalks, yards, and wooded streets. The military base consisted of a large green area with exotic and native vegetation surrounded by urbanized areas. Finally, we selected an urban natural reserve from a locality near to the city of Santo Tomé as a minimally managed site composed of typical habitats from the Paraná valley with native vegetation (D'Angelo et al. 1998, Medrano 2005).

We assessed differences in habitat structure and in the intensity of human activity among the urban land uses. We used the Photoshop CS6 (Adobe) software and the same Google Earth satellite image of each transect to estimate the percentage coverage of built surface, vegetation, unpaved soil, and water as in Gilbert and Butt (2009). The coverage of each variable was confirmed during bird counts. We also measured the intensity of human activity represented by (1) vehicle traffic, measured as the number of passing cars per min and (2) pedestrian activity, measured as

the number of passing pedestrians per min. We used the Kruskal-Wallis test to find differences between at least one of the pairs of urban land uses.

*Bird surveys.* We performed bird surveys from February to June 2015. At each urban land use type, we located 10 transects of 100 m long and 50 m wide separated by at least 150 m (Fig. 1). Each transect was visited twice. One visit corresponded to the breeding season and the other one, to the non-breeding season. The surveys were performed during the first four hours after dawn, on non-windy, not rainy days and on business days. We visited transects randomly at different moments during the morning to avoid bias in bird detection. We registered birds that were seen or heard, and which were perching, eating, walking, or interacting with another bird within the transect area. Additionally, to ensure our survey effort was comparable between urban land uses, we calculated sample completeness by comparing sample coverage within each urban land use following to Chao and Jost (2012) and using the iNEXT package in R (Hsieh et al. 2020).

*Bird diversity and abundance.* We measured bird diversity using Hill numbers, or the effective numbers of equally abundant species (Lou and González-Oreja 2012). Hill numbers differ by a parameter  $q$  that reflects their respective sensitivity to the relative fre-



**Figure 1.** The study area: the city of Santo Tomé. Upper left: Argentina. Political boundaries of the province of Santa Fe are shown in light blue. The red circle encompasses the city of Santo Tomé. The yellow circle shows the location of the urban reserve. Transects from different urban land uses are shown in different colours: (pink) the centre, (yellow) the suburban sector, (light green) the peri-urban sector, (blue) the small urban parks, (orange) the military base, (light blue) the riverside walkway and (red) the urban reserve.

quency of a species with  $q = 0$ ,  $q = 1$  and  $q = 2$ , corresponding to species richness, Shannon–Wiener ( $H'$ ) and Simpson's indexes of diversity, respectively (Chao et al. 2014). We used iNEXT package to estimate bird diversity (Hsieh et al. 2020) in R software. iNEXT aims to compare diversity estimates for equally-sized samples by interpolating and extrapolating total species richness (Hsieh et al. 2020). Interpolation and extrapolation curves were computed for each urban land use using bird abundance data and 999 bootstraps. We used the maximum number of individuals for each species during the two visits as a measure of bird abundance. We compared the confidence limits between curves at a minimum sample coverage between urban land uses. Non-overlapping confidence areas indicated significant differences in species diversity between curves ( $p < 0.05$ ).

We fitted generalized linear models (GLMs) to compare transect values of Hill numbers, total and native abundance, and the ratio of exotic individuals between urban land uses using the `glm` function from the R software. We used the `hillR` package (Li 2018) to calculate Hill numbers by transect. Total and native abundance were the mean number of individuals recorded in the two visits for the total species and the native species, respectively. The ratio of exotic individuals was the ratio of the mean number of exotic individuals of the two visits divided the mean number of total individuals. We tested the significance of models by comparing them with null models using likelihood ratio tests (LRT) with the ANOVA function ( $p < 0.05$ ). To analyse significant differences between urban land uses, we carried out posteriori tests using the `emmeans` function from `emmeans` package (Lenth 2022). For species richness, we assumed a Poisson distribution of errors and we checked for over- and sub-dispersion. For the Shannon–Wiener, Simpson index, total and native abundance, and ratio of exotic individuals, we assumed a Gaussian distribution of errors, and homoscedasticity and normality were checked. We detected and removed outliers for subsequent analysis from the centre and the riverside walkway produced by atypical records of the Brown-chested Martin (*Progne tapera*) in urban environments. If errors of GLMs had unequal variances, we used generalized least squares (GLS) instead of GLMs using the `nlme` package (Pinheiro et al. 2022). Spatial auto-correlation of residuals was analysed with the Moran index using “`spdep`” package from R (Bivand and Wong 2018), and no significant autocorrelation was found ( $p > 0.05$ ).

**Taxonomic composition.** We performed non-metric Multidimensional Scaling (NMDS) to compare taxonomic composition between urban land uses. NMDS is a multivariate data analysis (Legendre and Legendre 1988) which uses dissimilarity data to ordinate sites and species in multiple dimensions. We used the Bray–Curtis distance index (Bray and Curtis 1957) which takes into account species' abundances, using the `vegan` package (Oksanen et al. 2022). We used a Permutation Analysis of Variance (PERMANOVA) to test differences in species composition between urban land uses. We ran the PERMANOVA with the `adonis` function from the `vegan` package.

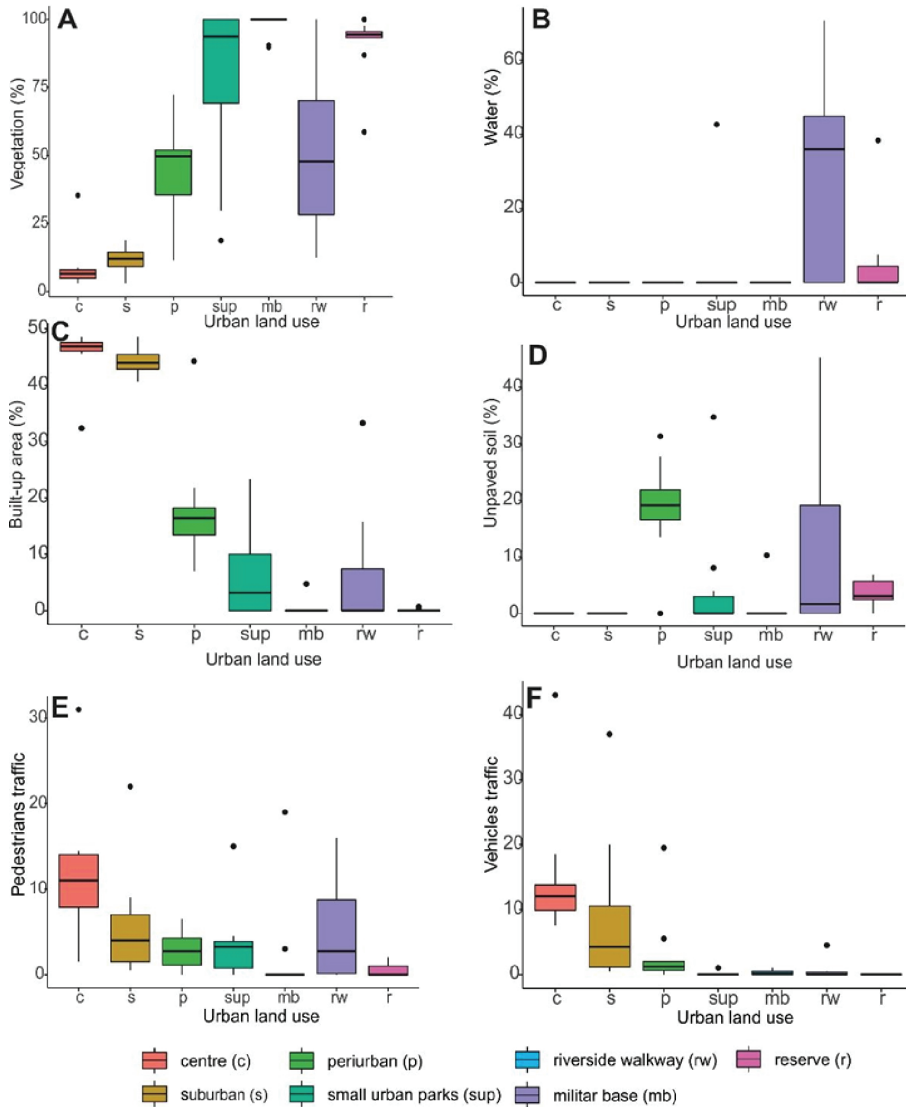
## RESULTS

### Urban land uses

**Land use characterization.** Urban land uses showed significant differences in habitat structure and human disturbance (Fig. 2). The highest percentage of built-up area, pedestrians and vehicles were in the centre and suburban sectors, while the lowest percentages, in the military base, riverside walkway and the urban reserve (Built-up area:  $H = 56.12$ ,  $p < 0.001$ , Pedestrians:  $H = 26.96$ ,  $p < 0.001$ , Vehicles:  $H = 50.18$ ,  $p < 0.001$ ) (Fig. 2C, E, F). The opposite pattern was observed for the percentage of vegetation and water cover (vegetation cover:  $H = 53.62$ ,  $p < 0.001$ , water cover:  $H = 27.06$ ,  $p < 0.001$ , Fig. 2A, B). The highest percentages of unpaved soil cover were found in the peri-urban sector and the riverside walkway (Soil cover:  $H = 35.71$ ,  $p < 0.001$ ) (Fig. 2D).

**Bird diversity.** Our survey was enough to record a representative sample of bird assemblages within each urban habitat. The assessment of sample completeness indicated that all samples reached over 80% completeness (89% in urban reserve and  $> 90\%$  in the rest of urban habitats), allowing for comparison of bird diversity across habitats (Fig. 3A). A total of 77 bird species were recorded from all urban land uses (Table 1). The most abundant species were the House Sparrow (*Passer domesticus*, 15.39% of individuals) and the Eared Dove (*Zenaida auriculata*, 14.8%). The urban centre presented the least number of species (14 species), whereas the urban reserve presented the highest number of species (55 species) (Table 1). The seven urban land uses supported different bird composition (Table 1). Based on the three most abundant species in each urban land use, we identified: (i) species that were among

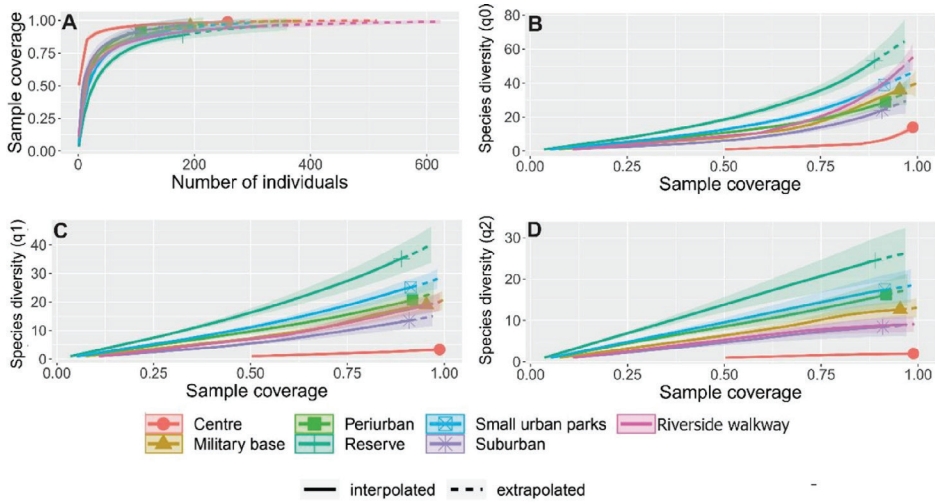




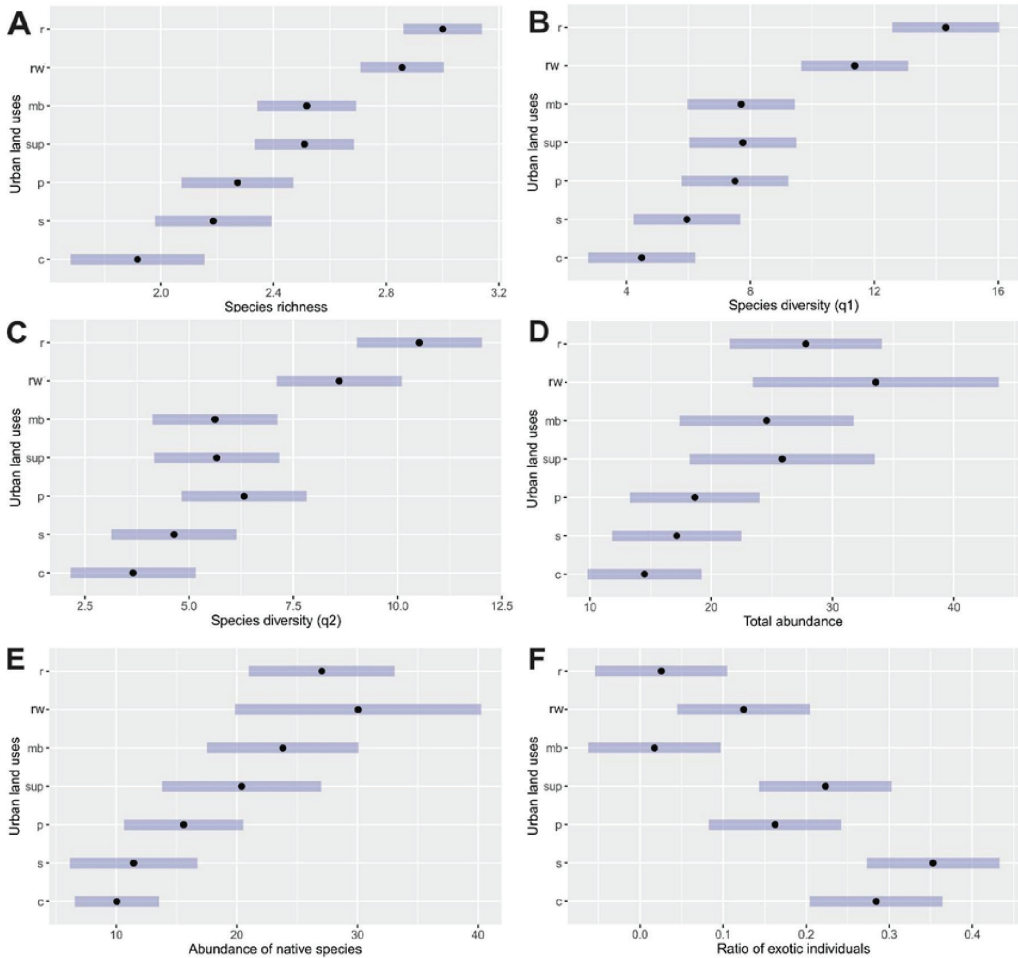
**Figure 2.** Box-plots of different environmental variables along land uses in Santo Tomé, Argentina. References: the centre of the city (c), the suburban sector (s), the peri-urban sector (p), small urban parks (sup), the military base (mb), the riverside walkway (rw) and the urban reserve (r).

the most abundant species in more than one urban land use such as the Eared Dove, the Brown-chested Martin, the House Sparrow and the Monk Parakeet (*Myiopsitta monachus*) and (ii) species which were among the most abundant species in one urban land use such as the Rufous Hornero (*Furnarius rufus*) in the suburban sector, the Rufous-bellied Thrush (*Turdus rufiventris*) and the Gray-breasted Martin (*Progne chalybea*) in the periurban sector, the Shiny Cowbird (*Molothrus bonariensis*) and the Guira Cuckoo (*Guira guira*) in the military base, the Rufous-collared Sparrow (*Zonotrichia capensis*) in the riverside walkway, and the Snowy Egret (*Egretta thula*) and the Common Gallinule (*Gallinula galeata*) in the urban reserve. (Table 1).

Rarefaction analysis showed significant differences of species diversity between the urban land uses, showing higher diversity in less urbanized land uses (Fig. 3B-D). Such differences were only significant when comparing the urban reserve and the centre with the rest of the urban land uses (Fig. 3B-D). The suburban sector, the peri-urban sector, small urban parks, the military base and the riverside walkway supported intermediate levels of bird diversity (Fig. 3B-D). Estimated species diversity per transect showed similar patterns. Species richness was lower in the city centre, in the suburban and peri-urban sectors than in the urban reserve and the riverside walkway (Fig. 4A). The rest of the urban land uses presented intermediate levels of



**Figure 3.** Rarefaction curves showing the sample coverage in relation to the number of individuals detected (a), and species richness ( $q = 0$ , b), the effective number of species for the Shannon-Wiener index ( $q = 1$ , c), and the effective number of species for the Simpson index ( $q = 2$ , d) in relation to sample coverage for the different land uses in Santo Tomé, Argentina.

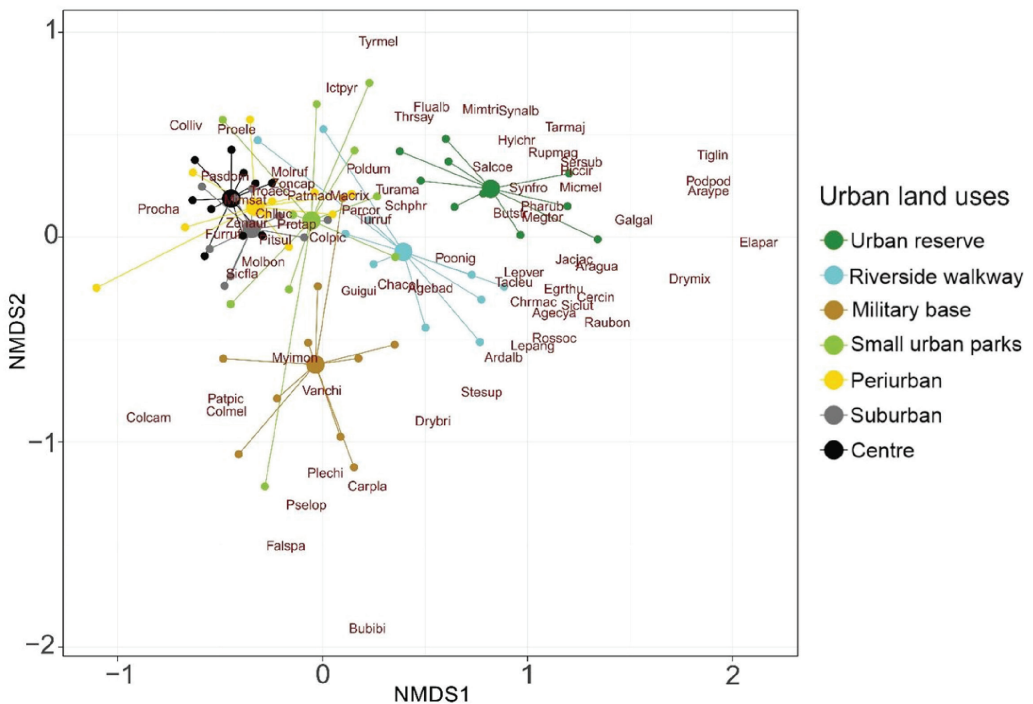


**Figure 4.** Post-hoc differences between land uses for different diversity and abundance values. Grey bars indicate confidence intervals. References: the centre of the city (c), the suburban sector (s), the peri-urban sector (p), small urban parks (sup), the military base (mb), the riverside walkway (rw) and the urban reserve (r).

species richness (Species richness LRT = 105.62,  $df = 6$ ,  $p < 0.001$ ) (Fig. 4A). We did not find differences in species diversity (Shannon and Simpson diversity) between the centre of the city, the suburban and the peri-urban sectors, small urban parks and the military base (Fig. 4C, D). Species diversity was higher in the urban reserve and the riverside walkway (Shannon: LRT = 667.4,  $df = 6$ ,  $p < 0.001$ , Simpson: LRT = 336.19,  $df = 6$ ,  $p < 0.001$ ) (Table 2, Fig. 4C, D).

The total abundance of birds at the centre of the city was lower than in the urban reserve and the riverside walkway (LRT = 24.34,  $df = 6$ ,  $p < 0.001$ ) (Fig. 4D). However, we did not find significant differences in the rest of pairwise comparisons (Fig. 4D; Table 1). The abundance of native species in the most urbanized land uses (the centre of the city, the suburban and peri-urban sectors) was lower than in the urban reserve (LRT = 37.55,  $df = 6$ ,  $p < 0.001$ ) (Fig. 4E). The rest of urban land uses presented intermediate levels of abundances of native species (Fig. 4E). The ratio of exotic species was lower in the urban reserve and the riverside walkway than in the centre of the city (LRT = 0.95,  $df = 6$ ,  $p < 0.001$ ) (Fig. 4F). The rest of urban land uses presented intermediate levels of ratio of exotic species (Fig. 4F).

**Bird composition.** The PERMANOVA showed significant differences of bird composition between land use types ( $F = 4.47$ ,  $p = 0.001$ ,  $r^2 = 0.30$ ). The NMDS (Stress = 0.20) showed distinct bird assemblages across urban land uses (Fig. 5). The House Sparrow, the Rock Dove (*Columba livia*), the Chalk-browed Mockingbird (*Mimus saturninus*) and the Rufous Hornero were more associated to the centre and residential land uses (the suburban and peri-urban sectors). The Grayish Saltator (*Saltator coerulescens*), the White-barred Piculet (*Picumnus cirratus*), the Wattled Jacana (*Jacana jacana*), the White-banded Mockingbird (*Mimus triurus*) and the Greater Thornbird (*Phacellodomus ruber*) were more associated to the urban reserve. The Rufous-collared Sparrow, the House Wren (*Troglodytes aedon*), the Picui Ground Dove (*Columbina picui*) and the Great Kiskadee (*Pitangus sulphuratus*) were more associated to moderately urbanized land uses such as the suburban and the periurban sectors and the small urban parks. The Masked Gnatcatcher (*Poliophtila dumicola*), the Rufous-bellied Thrush, the Grayish Baywing (*Agelaioides badius*) and the Sayaca Tanager (*Thraupis sayaca*) were more associated to the riverside walkway and the urban reserve. The Campo Flicker (*Colaptes campestris*), the Green-barred Woodpecker (*Colaptes melanochloros*), the Picazuro Pigeon (*Patagioenas picazuro*), the Spot-winged Pigeon (*Patagioenas maculosa*),



**Figure 5.** Non-metric multidimensional scaling showing the relationship of land uses and bird species in Santo Tomé, Argentina. Large circles indicate the centroid for each land use, whereas small circles indicate each transect. References: the centre of the city (c), the suburban sector (s), the peri-urban sector (p), small urban parks (sup), the military base (mb), the riverside walkway (rw) and the urban reserve (r).

the Monk Parakeet and the Guira Cuckoo were more associated to the military base (Fig. 5).

## DISCUSSION

The results obtained showed that bird diversity and abundance declined with increasing urbanization. Moreover, bird composition showed significant changes between land uses, with a dominance of exotic species in the most urbanized areas. In the city of Santo Tomé, bird species diversity and abundance decreased from highly to scarcely urbanized land uses, a pattern seen in many studies in the northern hemisphere (e.g. Clergeau et al. 2006, McKinney 2008, Vignoli et al. 2013) and within the neotropics (e.g. Ortega-Álvarez and MacGregor-Fors 2009, Leveau et al. 2017, Escobar-Ibáñez et al. 2020). Residential land uses supported similar bird diversity to the city centre and some recreational land uses such as the riverside walkway supported similar bird diversity to the urban reserve. According to some medium-sized cities in the Pampean region, the abundance of total bird species and native bird species decreased from highly to scarcely urbanized land uses (Garaffa et al. 2009). According to previous findings worldwide, bird assemblages in the city of Santo Tomé were composed mainly by widely distributed native species (Leveau and Leveau 2004, Juri and Chani 2009). However, two exotic bird species were identified: the House Sparrow and the Rock Dove. Contrary to previous findings, the first concentrated at the more urbanized land uses whereas the latter was represented by a few individuals at highly and moderately urbanized land uses. Our knowledge of the effect of urbanization is still incipient and more research is needed to understand the underlying ecological processes that shape the taxonomic bird diversity in the city of Santo Tomé. However, our research provides valuable information and constitutes a framework for future studies.

Cities are heterogeneous landscapes and bird assemblages respond accordingly (e.g. Juri and Chani 2005, Leveau et al. 2017). Using the gradient approach to study these variations, in humid forests, the bird diversity often increases from highly urbanized land uses (commercial and administrative areas) towards natural protected/unprotected areas (Ortega-Álvarez and MacGregor-Fors 2009, Filloy et al. 2019, Escobar-Ibáñez et al. 2020). Although we reported an increase in the bird diversity from highly to scarcely urbanized land uses, we observed that some moderately urbanized land uses, such as the riverside walkway, supported similar bird diversity to the reserve. In Argentina, the first was

reported in a previous study performed in an Argentinian city but in an urban-rural gradient (e.g. Leveau et al. 2017). High levels of bird diversity in moderately urbanized land uses are often associated with a high diversity and abundance of habitat and resources available to birds (Blair 1996, Hurlbert 2004, Leveau 2013, 2019). In moderately urbanized land uses, humans create public and private urban green spaces with vegetation strata: lawn, shrubs, and trees. The presence of a variety of shrub and tree species usually provides a diversity of flora and fruit resources for birds (Fröhlich and Ciach 2020, Curzel and Leveau 2021, Lerman et al. 2021). In addition, preferences for colourful and showy plants which are easy to maintain often influence vegetation management and habitat heterogeneity (Avolio et al. 2018, Cavender-Bares et al. 2020). The introduction of watering regimes, fertilizers and regular maintenance in these urban areas may also increase primary productivity (Blair 1996, Lepczyk et al. 2004, Cavender-Bares et al. 2020). The mixture of non-vegetated and vegetated features at moderately urbanized land uses may increase the amount of edge habitat available, allowing a higher species richness than in highly urbanized land uses (Blair and Johnson 2008, MacGregor-Fors and Schondube 2011, Leveau 2013). On the other hand, the high bird diversity observed in sparsely urbanized land uses (the urban reserve) may be associated to both: (i) the highest levels of primary productivity and habitat diversity produced by continuous coverage of highly heterogeneous habitats dominated by native vegetation (Garaffa et al. 2009, Leveau et al. 2017, Filloy et al. 2019), and (2) the lowest levels of human activity since the replacement of green areas by impervious surface, the human population density and vehicle traffic and noise act as selective pressures to species in more urbanized land uses (Ortega-Álvarez and MacGregor-Fors 2009, Leveau et al. 2017, da Silva et al. 2021). Therefore, our results suggest that similar levels of bird diversity to protected/unprotected lands at moderately urbanized land uses are possible. However, future studies aimed to disentangle the effect of habitat features across the city are encouraged since it has been shown that habitat structure can shape bird assemblages at different levels of urbanization, even in highly urbanized land uses (Pellissier et al. 2012, Curzel et al. 2021).

The total energy available in ecosystems shape the abundance of individuals that they support (Storch et al. 2018). Since primary productivity varies across urban systems, changes in the abundance of individuals in bird assemblages are expected (Chiari et al. 2010, Leveau 2019, Leveau et al. 2020). In Argentina, changes of total bird abundance along urban/non-urban gradients



reported in the literature are variable (Leveau and Leveau 2004, Garaffa et al. 2009, Leveau and Zuria 2017). In contrast, an increase of the abundance of native bird species towards the non-urban extreme was often reported in Argentinian cities (Garaffa et al. 2009, Leveau 2019). Regarding the total abundance of bird species and of native bird species, our results agree with the findings of Garaffa et al. (2009) and Leveau and Leveau (2004) for some medium size cities given that the most urbanized land uses (centre and suburban sector) presented lower levels of abundance than the less urbanized land uses (the riverside walkway and the urban reserve). The number of individuals that a habitat can support is often expected to be positively associated to primary productivity (Storch et al. 2018, Leveau 2019). It is important to note that the increase in the abundance of birds from highly to scarcely urbanized land uses in the city of Santo Tomé was more evident when only native species were considered. Exotic bird species concentrated mainly at highly urbanized land uses (Leveau et al. 2017). The urban exotic bird species are able to thrive in highly urbanized land uses since they are able to feed on discarded food provided by humans and nest on buildings in an environment where the predation pressure is often low (McKinney 2006). These results reinforce the relevance of those urban land uses in which resources for native species are available to favour the abundance of native species in urban systems. In addition, some gaps in the knowledge of the underlying process that shape the abundance of exotic species in the city of Santo Tomé emerged. In Argentinian cities the increase in the abundance of exotic bird species towards the more urbanized sites are mainly represented by two Eurasian species, the House Sparrow and the Rock Dove (Germain et al. 2008, Juri and Chani 2009, Cristaldi et al. 2017, Leveau et al. 2017), even in intermediate size cities (Ramirez et al. 2016, Gorosito and Cueto 2020). The relative low abundance of the Rock Dove in the city of Santo Tomé with respect to nearby cities (Cristaldi et al. 2017) may need further studies. As it is a species that is able to fly the entire distance between Santo Tomé and nearby cities in a single day (Carlen and Munshi-South 2021), its relative low abundance may be associated to historical factors (e.g., the year when the city was colonized by birds) or environmental features of the city of Santo Tomé (e.g. the lack of high-rise buildings) (Hetmański 2007, Evans et al. 2010, Møller et al. 2012, Przybylska et al. 2012, Tang et al. 2018, Carlen and Munshi-South 2021). This knowledge may contribute to urban planning to regulate populations of exotic species in urban systems.

Bird assemblages within the city of Santo Tomé are composed of a lower number of native species than in surrounding non-urban areas (rural and natural areas) (Rossetti and Giraudo 2003, de la Peña 2013, Frutos et al. 2020). It has been shown that urban systems can filter bird species according to their ecological functions (Crocì et al. 2008, Silva et al. 2016, Leveau 2021). For instance, although insectivorous species were often identified across all urban land uses such as the House Wren, the Rufous Hornero and the Great Kiskadee, other insectivorous species such as the White-barred Piculet, the Great Antshrike (*Taraba major*) and the Black-capped Warbling Finch (*Microspingus melanoleucus*) appeared only in the urban reserve, which was dominated by native vegetation (Cristaldi et al. 2017). In addition, the success of colonizing urban systems may also be associated with the abundance of species in non-urban areas (e.g. Leveau et al. 2022). In this sense, species present in the city of Santo Tomé are among the most abundant species in the surrounding non-urban areas as it was reported in previous studies (Rossetti and Giraudo 2003, de la Peña 2013, Frutos et al. 2020). Therefore, future studies should shed light on the underlying processes that shape the urban bird assemblage in the city of Santo Tomé in order to enhance the occurrence of those native species that seem to avoid urban systems and constraint population dynamics of exotic bird species.

#### FINAL REMARKS

Although it has been widely shown that large urban areas have a significant effect on bird assemblages, our results suggest that intermediate size cities like Santo Tomé can also have a significant effect. In our study, bird species diversity and abundance increased from highly to scarcely urbanized land uses. Exotic species concentrated their abundance on the most urbanized land uses. These declines in bird diversity suggest that several native bird species that inhabit the surrounding non-urban habitats could not thrive in the city. However, we observed that most of urban land uses can still retain native species and some of them may enhance bird diversity and contribute to the heterogeneity of bird assemblage composition. In this sense, high levels of species diversity and heterogeneity of bird composition were associated to urban land uses with natural resources according to the ecological requirement of species, relative low levels of human disturbance and vegetation management for conservation or aesthetic purposes. Given that the city of Santo Tomé is expected to grow,

**Table 1.** Maximum abundance of species recorded in each urban land use type throughout the study period.

Species	Code	Reserve	Riverside walkway	Military base	Small urban parks	Peri-urban	Suburban	City centre
<i>Progne tapera</i>	Protap	3	84	2	3	0	25	179
<i>Passer domesticus</i>	Pasdom	6	49	15	20	8	17	31
<i>Zenaidia auriculata</i>	Zenaur	18	14	16	18	13	7	14
<i>Zonotrichia capensis</i>	Zoncap	9	16	3	3	7	3	8
<i>Pitangus sulphuratus</i>	Pitsul	5	4	2	7	4	4	5
<i>Molothrus bonariensis</i>	Molbon	1	12	30	7	7	4	5
<i>Myiopsitta monachus</i>	Myimon	6	13	21	10	3	6	3
<i>Furnarius rufus</i>	Furruf	4	4	4	7	7	7	3
<i>Poliophtila dumicola</i>	Poldum	5	2	2	2	1	2	2
<i>Troglodytes aedon</i>	Troaed	4	3	3	1	3	2	2
<i>Chlorostilbon lucidus</i>	Chlluc	3	1	1	2	1	1	2
<i>Patagioenas maculosa</i>	Patmac	1	3	1	9	2	1	1
<i>Columba livia</i>	Colliv	0	0	0	2	0	2	1
<i>Sicalis flaveola</i>	Sicfla	0	1	0	1	3	1	1
<i>Egretta thula</i>	Egrthu	17	0	1	0	0	0	0
<i>Gallinula galeata</i>	Galgal	13	1	0	1	0	0	0
<i>Butorides striata</i>	Butstr	7	8	0	2	0	0	0
<i>Thraupis sayaca</i>	Thrsay	6	0	0	1	1	0	0
<i>Jacana jacana</i>	Jacjac	6	4	0	4	0	0	0
<i>Agelaioides badius</i>	Agebad	5	5	2	0	0	0	0
<i>Phacelodomus ruber</i>	Pharub	4	2	1	0	0	0	0
<i>Hylocharis chrysura</i>	Hylchr	4	1	0	0	0	0	0
<i>Aramus guaranauna</i>	Aragua	4	2	0	2	0	0	0
<i>Vanellus chilensis</i>	Vanchi	4	4	2	2	2	1	0
<i>Caracara plancus</i>	Carpla	2	2	2	2	0	0	0
<i>Machetornis rixosa</i>	Macrix	2	3	1	5	2	1	0
<i>Dryobates mixtus</i>	Drymix	2	2	0	0	0	0	0
<i>Turdus rufiventris</i>	Turruf	2	3	5	2	9	2	0
<i>Turdus amaurochalinus</i>	Turama	2	1	3	2	1	1	0
<i>Mimus saturninus</i>	Mimsat	2	3	0	4	3	2	0
<i>Paroaria coronata</i>	Parcor	2	2	2	5	2	3	0
<i>Microspingus melanoleucus</i>	Micmel	2	0	0	0	0	0	0
<i>Certhiaxis cinnamomeus</i>	Cercin	2	2	0	0	0	0	0
<i>Aramides ypecaha</i>	Araype	2	0	0	0	0	0	0
<i>Rostrhamus sociabilis</i>	Rossoc	2	1	3	0	0	0	0
<i>Colaptes campestris</i>	Colcam	2	0	1	1	1	0	0
<i>Saltator coerulescens</i>	Salcoe	3	2	0	0	0	1	0
<i>Columbina picui</i>	Colpic	1	10	4	6	3	1	0
<i>Taraba major</i>	Tarmaj	1	0	0	0	0	0	0

Species	Code	Reserve	Riverside walkway	Military base	Small urban parks	Peri-urban	Suburban	City centre
<i>Agelasticus cyanopus</i>	Agecya	1	9	0	0	0	0	0
<i>Lepidocolaptes angustirostris</i>	Lepang	1	1	1	0	0	0	0
<i>Leptotila verreauxi</i>	Lepver	1	0	1	0	0	0	0
<i>Rupornis magnirostris</i>	Rupmag	1	0	0	0	1	0	0
<i>Serpophaga subcristata</i>	Sersub	1	0	0	1	0	0	0
<i>Mimus triurus</i>	Mimtri	1	0	0	1	0	0	0
<i>Synallaxis albescens</i>	Synalb	1	0	0	0	0	0	0
<i>Podilymbus podiceps</i>	Podpod	1	0	0	0	0	0	0
<i>Synallaxis frontalis</i>	Synfro	1	0	0	0	0	0	0
<i>Guira guira</i>	Guigui	1	11	23	5	0	3	0
<i>Falco sparverius</i>	Falspa	1	1	2	2	0	0	0
<i>Megasceryle torquata</i>	Megtor	1	0	0	1	0	0	0
<i>Fluvicola albiventer</i>	Flualb	1	0	0	1	0	0	0
<i>Tigrisoma lineatum</i>	Tiglin	1	0	0	0	0	0	0
<i>Elaenia parvirostris</i>	Elapar	1	0	0	0	0	0	0
<i>Picumnus cirratus</i>	Piccir	1	0	0	0	0	0	0
<i>Schoeniophylax phryganophilus</i>	Schphr	0	2	0	0	2	0	0
<i>Ardea alba</i>	Ardalb	0	2	0	1	0	0	0
<i>Poospiza nigrorufa</i>	Poonig	0	1	0	0	0	0	0
<i>Charadrius collaris</i>	Chacol	0	3	0	0	0	0	0
<i>Tachycineta leucopyga</i>	Tacleu	0	5	0	0	1	0	0
<i>Rauenia bonariensis</i>	Raubon	0	1	0	0	0	0	0
<i>Sicalis luteola</i>	Siclut	0	1	0	0	0	0	0
<i>Leistes superciliaris</i>	Stesup	0	1	0	0	0	0	0
<i>Plegadis chihi</i>	Plechi	0	4	4	0	0	0	0
<i>Patagioenas picazuro</i>	Patpic	0	1	2	1	0	1	0
<i>Pseudoseisura lophotes</i>	Pselop	0	0	3	0	0	0	0
<i>Progne chalybea</i>	Procha	0	0	4	0	12	0	0
<i>Drymornis bridgesii</i>	Drybri	0	0	2	0	0	0	0
<i>Bubulcus ibis</i>	Bubibi	0	0	20	0	0	0	0
<i>Colaptes melanochloros</i>	Colmel	0	0	1	0	1	0	0
<i>Molothrus rufoaxillaris</i>	Molruf	0	0	3	1	4	0	0
<i>Icterus cayanensis</i>	Ictcay	0	0	0	3	1	0	0
<i>Progne elegans</i>	Proele	0	4	0	0	3	0	0
<i>Chroicocephalus maculipennis</i>	Chrmac	0	1	0	0	0	0	0
<i>Tyrannus melancholicus</i>	Tyrmel	0	0	0	1	0	0	0

**Table 2.** Generalized linear model and Generalized least squares model results showing differences in Species richness, Shannon–Wiener and Simpson index, total abundance, abundance of native species, ratio of exotic individuals between urban land uses of Santo Tomé, Argentina. z/t indicates z or t tests. Reserve is in the intercept.

Variable	Estimate	Std. Error	z/t	p value
<b>Species richness</b>				
Intercept	3.001	0.07	42.543	<0.001
Centre	-1.084	0.14	-7.725	<0.001
Peri-urban	-0.729	0.124	-5.893	<0.001
Suburban	-0.815	0.127	-6.398	<0.001
Small urban parks	-0.491	0.114	-4.29	<0.001
Military base	-0.483	0.114	-4.23	<0.001
Riverside walkway	-0.144	0.103	-1.393	0.164
<b>Shannon-Wiener index</b>				
Intercept	14.308	0.865	16.55	<0.001
Centre	-9.821	1.223	-8.033	<0.001
Peri-urban	-6.805	1.223	-5.566	<0.001
Suburban	-8.362	1.223	-6.839	<0.001
Small urban parks	-6.553	1.223	-5.36	<0.001
Military base	-6.607	1.223	-5.404	<0.001
Riverside walkway	-2.941	1.223	-2.406	0.02
<b>Simpson index</b>				
Intercept	10.523	0.75	14.03	<0.001
Centre	-6.866	1.061	-6.473	<0.001
Peri-urban	-4.201	1.061	-3.961	<0.001
Suburban	-5.882	1.061	-5.545	<0.001
Small urban parks	-4.862	1.061	-4.584	<0.001
Military base	-4.902	1.061	-4.621	<0.001
Riverside walkway	-1.921	1.061	-1.811	0.075
<b>Total abundance</b>				
Intercept	27.8	2.884	9.639	<0.001
Centre	-13.3	3.556	-3.74	<0.001
Peri-urban	-9.15	3.792	-2.413	0.019
Suburban	-10.65	3.789	-2.81	0.007
Small urban parks	-1.95	4.541	-0.429	0.669
Military base	-3.233	4.38	-0.738	0.463
Riverside walkway	5.755	5.431	1.059	0.293
<b>Abundance of native species</b>				
Intercept	27.05	2.789	9.695	<0.001
Centre	-16.994	3.187	-5.331	<0.001
Peri-urban	-11.45	3.6	-3.179	0.002
Suburban	-15.6	3.699	-4.216	<0.001
Small urban parks	-6.65	4.118	-1.614	0.111
Military base	-3.233	4.017	-0.804	0.424
Riverside walkway	3.005	5.408	0.555	0.58
<b>Ratio of exotic individuals</b>				
Intercept	0.025	0.039	0.641	0.524
Centre	0.258	0.05	4.581	<0.001
Peri-urban	0.137	0.056	2.427	0.018
Suburban	0.327	0.056	5.793	<0.001
Small urban parks	0.197	0.056	3.503	<0.001
Military base	-0.008	0.056	-0.145	0.885
Riverside walkway	0.099	0.056	1.757	0.083



our results should serve as a base knowledge for an urban planning aimed to enhance the diversity and heterogeneity of urban bird assemblages.

### ACKNOWLEDGMENTS

The following supported the work: CONICET (PIP 2011-0355), Universidad Nacional del Litoral (CAID-2016-UNL), ANPCYT (PICT 2016-1415 and PICT-2013-2203 FONCYT). We thank the Consejo Nacional de Investigaciones Científicas y Técnicas and the Instituto Nacional de Limnología (CONICET- UNL) which facilitated our work.

### LITERATURE CITED

- ALLRED S, STEDMAN R, HEADY L AND STRONG K (2021) Incorporating Biodiversity in Municipal Land-Use Planning: An Assessment of Technical Assistance, Policy Capacity, and Conservation Outcomes in New York's Hudson Valley. *Land Use Policy* 104: 105344. <https://doi.org/10.1016/j.landusepol.2021.105344>
- ARONSON MFJ, LA SORTE FA, NILON CH, KATTI M, GODDARD MA, LEPCZYK CA, WARREN PS, WILLIAMS NSG, CILLIERS S, CLARKSON B, DOBBS C, DOLAN R, HEDBLUM M, KLOTZ S, KOOLJMAN S, KUHN I, MACGREGOR-FORS I, McDONNELL M, MORTBERG U, PYSEK P, SIEBERT S, SUSHINSKY J, WERNER P AND WINTER M (2014) A Global Analysis of the Impacts of Urbanization on Bird and Plant Diversity Reveals Key Anthropogenic Drivers. *Proceedings of the Royal Society* 281(1780): 20133330
- ARZAMENDIA V AND GIRAUDO A (2004) Usando Patrones de Biodiversidad Para La Evaluación y Diseño de Áreas Protegidas: Las Serpientes de La Provincia de Santa Fe ( Argentina ) Como Ejemplo. *Revista Chilena de Historia Natural* 77: 335–348
- AVOLIO ML, PATAKI DE, TRAMMELL TLE AND ENDTER-WADA J (2018) Biodiverse Cities: The Nursery Industry, Homeowners, and Neighborhood Differences Drive Urban Tree Composition. *Ecological Monographs* 88(2): 259–276
- BATÁRY P, KURUCZ K, SUAREZ-RUBIO M AND CHAMBERLAIN DE (2018) Non-Linearities in Bird Responses across Urbanization Gradients: A Meta-Analysis. *Global Change Biology* 24(3): 1046–1054
- BIRDLIFE INTERNATIONAL (2013) Birds are found almost everywhere in the world, from the poles to the equator. Downloaded from <http://www.birdlife.org> on 19/12/2022
- BIVAND RS AND WONG DWS (2018) Comparing implementations of global and local indicators of spatial association. *TEST*, 27(3), 716–748. URL <https://doi.org/10.1007/s11749-018-0599-x>
- BLAIR RB (1996) Land Use and Avian Species Diversity Along an Urban Gradient. *Ecological Applications* 6(2): 506–519
- BLAIR RB AND JOHNSON EM (2008) Suburban Habitats and Their Role for Birds in the Urban-Rural Habitat Network: Points of Local Invasion and Extinction? *Landscape Ecology* 23: 1157–1169
- BRAY JR AND CURTIS JT (1957) An Ordination of the Upland Forest Communities of Southern Wisconsin. *Ecological Monographs* 27(4): 325–349
- CABRERA AL (1994) Regiones Fitogeográficas Argentinas. *Enciclopedia Argentina de Agricultura y Jardinería* 2: 1–85
- CARLEN E AND MUNSHI-SOUTH J (2021) Widespread Genetic Connectivity of Feral Pigeons across the Northeastern Megacity. *Evolutionary Applications* 14(1): 150–162
- CAVENDER-BARES J, CUBINO JP, PEARSE WD, HOBBIE SE, LANGE AJ, KNAPP S AND NELSON KC (2020) Horticultural Availability and Homeowner Preferences Drive Plant Diversity and Composition in Urban Yards. *Ecological Applications* 30(4): 1–16
- CHAO A, GOTELLI NJ, HSIEH TC, SANDER EL, MA KH, COLWELL RK AND ELLISON AM (2014) Rarefaction and Extrapolation with Hill Numbers: A Framework for Sampling and Estimation in Species Diversity Studies. *Ecological Monographs* 84(1): 45–67
- CHAO A AND JOST L (2012) Coverage-Based Rarefaction and Extrapolation: Standardizing Samples by Completeness Rather than Size. *Ecology* 93(12): 2533–2547
- CHIARI C, DINETTI M, LICCIARDELLO C, LICITRA G AND PAUTASSO M (2010) Urbanization and the More-Individuals Hypothesis. *Journal of Animal Ecology* 79(2): 366–371
- CLERGEAU P, CROCI S, JOKIMÄKI J, KAISANLAHTI-JOKIMÄKI ML AND DINETTI M (2006) Avifauna Homogenisation by Urbanisation: Analysis at Different European Latitudes. *Biological Conservation* 127(3): 336–344
- CRISTALDI MA, GIRAUDO AR, ARZAMENDIA V, BELLINI GP AND CLAUS J (2017) Urbanization impacts on the trophic guild composition of bird communities. *Journal of Natural History* 51: 1–20 <https://doi.org/10.1080/00222933.2017.1371803>
- CROCI S, BUTET A AND CLERGEAU P (2008) Does Urbanization Filter Birds on the Basis of Their Biological Traits? *The Condor* 110(2): 223–240
- CURZEL FE, BELLOCQ MI AND LEVEAU LM (2021) Local and Landscape Features of Wooded Streets Influenced Bird Taxonomic and Functional Diversity. *Urban Forestry and Urban Greening* 66: 127369

- CURZEL FE AND LEVEAU LM (2021) Bird Taxonomic and Functional Diversity in Three Habitats in Buenos Aires City, Argentina. *Birds* 2(2): 217–229
- D'ANGELO CH, PENSIERO JF AND PAUTASSO AA (1998) Evaluaciones Ecológicas Rápidas En Reservas de La Provincia de Santa Fe. Reserva Ecológica de La Ciudad Universitaria Paraje El Pozo (UNL). *Informe Técnico Presentado a La Fundación Hábitat y Desarrollo*
- ESCOBAR-IBÁÑEZ JF, RUEDA-HERNÁNDEZ R AND MACGREGOR-FORS I (2020) The Greener the Better! Avian Communities Across a Neotropical Gradient of Urbanization Density. *Frontiers in Ecology and Evolution* 8: 1–11
- EVANS KL, HATCHWELL BJ, PARNELL M AND GASTON KJ (2010) A Conceptual Framework for the Colonisation of Urban Areas: The Blackbird *Turdus Merula* as a Case Study. *Biological Reviews* 85(3): 643–667
- FILLOY J, ZURITA GA AND BELLOCQ MI (2019) Bird Diversity in Urban Ecosystems: The Role of the Biome and Land Use Along Urbanization Gradients. *Ecosystems* 22(1): 213–227 <https://doi.org/10.1007/s10021-018-0264-y>
- FRÖHLICH A AND CIACH M (2020) Dead Tree Branches in Urban Forests and Private Gardens Are Key Habitat Components for Woodpeckers in a City Matrix. *Landscape and Urban Planning* 202: 103869. <https://doi.org/10.1016/j.landurbplan.2020.103869>
- FRUTOS AE, RONCHI-VIRGOLINI AL, GIRAUDO AR AND PIÑA CI (2020) How Does Cattle Raising Affect Bird Communities in the Delta of the Paraná River? *Journal for Nature Conservation* 57: 125872. <https://doi.org/10.1016/j.jnc.2020.125872>
- GARAFFA PI, FILLOY J AND BELLOCQ MI (2009) Bird Community Responses along Urban-Rural Gradients: Does the Size of the Urbanized Area Matter? *Landscape and Urban Planning* 90(1–2): 33–41
- GERMAIN P, CUEVAS Y, SANHUEZA C, TIZÓN R, LOYDI A, DE VILLALOBOS AE, ZAPPERI G, VÁZQUEZ B, POMPOZZI G AND PIOVÁN MJ (2008) Ensemble de Aves En Zonas Con Diferente Grado de Urbanización En La Ciudad de Bahía Blanca (Buenos Aires, Argentina). *BioScriba* 1(2): 35–45
- GILBERT JA AND BUTT KR (2009) Digital photography as a tool for field monitoring in potentially inhospitable environments. *Mires and Peat* 5(05): 1–6
- GOROSITO CA AND CUETO VR (2020) Do Small Cities Affect Bird Assemblages? An Evaluation from Patagonia. *Urban Ecosystems* 23(2): 289–300
- GRIMM NB, FAETH SH, GOLUBIEWSKI NE, REDMAN CL, WU J, BAI X AND BRIGGS JM (2008) Global Change and the Ecology of Cities. *Science* 319: 756–760
- HETMAŃSKI T (2007) Dispersion Asymmetry within a Feral Pigeon *Columba Livia* Population. *Acta Ornithologica* 42(1): 23–31
- HSIEH TC, MA KH AND CHAO A (2020) iNEXT: iNterpolation and EXTrapolation for species diversity. R package version 2.0.20 URL: <http://chao.stat.nthu.edu.tw/wordpress/software-download/>.
- HURLBERT AH (2004) Species-Energy Relationships and Habitat Complexity in Bird Communities. *Ecology Letters* 7(8): 714–720
- JETZ W, THOMAS GH, JOY JB, HARTMANN K AND MOOERS AO (2012) The Global Diversity of Birds in Space and Time. *Nature* 491(7424): 444–448
- JURI MD AND CHANI JM (2005) Variación En La Composición de Comunidades de Aves a Lo Largo de Un Gradiente Urbano (Tucumán, Argentina). *Acta Zoológica Lilloana* 49: 49–57
- JURI MD AND CHANI JM (2009) Variación Estacional En La Composición de Las Comunidades de Aves En Un Gradiente Urbano. *Ecología Austral* (19): 175–184
- KENDAL D, EGERER M, BYRNE JA, JONES PJ, MARSH P, THRELFALL CG, ALLEGRETTO G, KAPLAN H, NGUYEN HKD, PEARSON S, WRIGHT A AND FLIES EJ (2020) City-Size Bias in Knowledge on the Effects of Urban Nature on People and Biodiversity. *Environmental Research Letters* 15(12)
- KOH CN, LEE PF AND LIN RS (2006) Bird species richness patterns of northern Taiwan: Primary productivity, human population density, and habitat heterogeneity. *Diversity and Distributions* 12(5): 546–554
- LEGENDRE P AND LEGENDRE L (1988) Numerical Ecology, 2nd English edn. Elsevier Science, Amsterdam
- LENTH R (2022) emmeans: Estimated Marginal Means, aka Least-Squares Means. R package version 1.8.0, <<https://CRAN.R-project.org/package=emmeans>>
- LEPCZYK CA, MERTIG AG AND LIU J (2004) Assessing Landowner Activities Related to Birds Across Rural-to-Urban Landscapes. *Environmental Management* 33(1): 110–125
- LERMAN SB, NARANGO DL, AVOLIO ML, BRATT AR, ENGEBRETSON JM, GROFFMAN PM, HALL SJ, HEFFERNAN JB, HOBBIE SE, LARSON KL, LOCKE DH, NEILL C, NELSON KC, CUBINO JP AND TRAMMELL TLE (2021) Residential Yard Management and Landscape Cover Affect Urban Bird Community Diversity across the Continental USA. *Ecological Applications* 31(8): 1–20
- LEVEAU LM (2013) Relaciones aves – hábitat en el sector suburbano de Mar del Plata, Argentina. *Ornitología Neotropical* 24: 201–212
- LEVEAU LM (2019) Primary Productivity and Habitat Diversity Predict Bird Species Richness and Composition along Urban-Rural Gradients of Central Argentin

- ina. *Urban Forestry and Urban Greening* 43: 126349 <https://doi.org/10.1016/j.ufug.2019.05.011>.
- LEVEAU LM (2021) Consistency in Bird Community Assembly over Medium-Term along Rural-Urban Gradients in Argentina. *Ecological Processes* 10:34
- LEVEAU LM AND LEVEAU CM (2004) Comunidades de Aves En Un Gradiente Urbano de La Ciudad de Mar Del Plata, Argentina. *Hornero* 19(1): 13–21
- LEVEAU LM, LEVEAU CM, VILLEGAS M, CURSACH JA AND SUAZO CG (2017) Bird Communities along Urbanization Gradients: A Comparative Analysis among Three Neotropical Cities. *Ornitología Neotropical* 28: 77–87
- LEVEAU LM, GORLERI FC, ROESLER I AND GONZÁLEZ-TÁBOAS F (2022) What Makes an Urban Raptor? *Ibis*: 1–14
- LEVEAU LM, ISLA FI AND BELLOCQ MI (2020) From Town to Town: Predicting the Taxonomic, Functional and Phylogenetic Diversity of Birds Using NDVI. *Ecological Indicators* 119: 106703. <https://doi.org/10.1016/j.ecolind.2020.106703>
- LEVEAU LM AND ZURIA I (2017) Flocking the City: Avian Demography and Population Dynamics in Urban Latin America. In *Avian Ecology in Latin American Cityscapes*, eds. Ian MacGregor-Fors and Juan F. Escobar-Ibáñez. Springer International Publishing AG, 57–77
- LI D (2018) hillR: taxonomic, functional, and phylogenetic diversity and similarity through Hill Numbers. *Journal of Open Source Software* 3(31), 1041. <https://doi.org/10.21105/joss.01041>
- LOU J AND GONZÁLEZ-OREJA JA (2012) Midiendo La Diversidad Biológica: Más Allá Del Índice de Shannon. *Acta zoológica lilloana* 56 (1–2): 3–14
- MACGREGOR-FORS I AND SCHONDUBE JE (2011) Gray vs. Green Urbanization: Relative Importance of Urban Features for Urban Bird Communities. *Basic and Applied Ecology* 12(4): 372–381
- MARZLUFF JM (2005) Island Biogeography for an Urbanizing World How Extinction and Colonization May Determine Biological Diversity in Human-Dominated Landscapes. *Urban Ecosystems* 8: 157–177
- MARZLUFF JM, BOWMAN R AND DONNELLY R (2001) A Historical Perspective on Urban Bird Research: Trends, Terms, and Approaches. In *Avian Ecology and Conservation in an Urbanizing World*, ed. JM Marzluff. Springer, Boston, MA, 1–17
- MCDONALD RI, BEATLEY T AND ELMQVIST T (2018) The Green Soul of the Concrete Jungle: The Urban Century, the Urban Psychological Penalty, and the Role of Nature. *Sustainable Earth* 1(1): 1–13
- McKINNEY ML (2006) Urbanization as a Major Cause of Biotic Homogenization. *Biological Conservation* 127(3): 247–260
- McKINNEY ML (2008) Effects of Urbanization on Species Richness: A Review of Plants and Animals. *Urban Ecosystems* 11(2): 161–176
- McKINNEY ML AND LOCKWOOD JL (1999) Biotic Homogenization: A Few Winners Replacing Many Losers in the next Mass Extinction. *Trends in Ecology and Evolution* 14(11): 450–453
- MEDRANO MC (2005) Evaluación de La Riqueza y Diversidad de Arthropoda En La Reserva Ecológica de La Ciudad Universitaria ‘El Pozo’, Santa Fe, Argentina. Tesina de Licenciatura En Biodiversidad (FHUC-Univ. Nac. Del Litoral). Dir.: Gagneten AM; Co-Dir.: D’Angelo CH: 64
- MITTERMEIER RA, TURNER WR, LARSEN FW, BROOKS TM AND GASCON C (2011) Global Biodiversity Conservation: The Critical Role of Hotspots. In *Biodiversity Hotspots*, Springer, Berlin, Heidelberg, 3–22
- MÖLLER AP, DIAZ M, FLENSTED-JENSEN E, GRIM T, IBÁÑEZ-ÁLAMO JD, JOKIMÄKI J, MÄND R, MARKÓ G AND TRYJANOWSKI P (2012) High Urban Population Density of Birds Reflects Their Timing of Urbanization. *Oecologia* 170(3): 867–875
- OKSANEN J, SIMPSON G, BLANCHET F, KINDT R, LEGENDRE P, MINCHIN P, O’HARA R, SOLYMO S, STEVENS M, SZOEC S, WAGNER H, BARBOUR M, BEDWARD M, BOLKER B, BORDARD D, CARVALHO G, CHIRICO M, DE CACERES M, DURAND S, EVANGELISTA H, FITZJOHN R, FRIENDLY M, FURNEAUX B, HANNIGAN G, HILL M, LAHTI L, MCGLENN D, OUELLETTE M, RIBEIRO CUNHA E, SMITH T, STIER A, TER BRAAK C AND WEEDON J (2022). *vegan: Community Ecology Package*. R package version 2.6-2, <<https://CRAN.R-project.org/package=vegan>>
- ORTEGA-ÁLVAREZ R AND MACGREGOR-FORS I (2009) Living in the Big City: Effects of Urban Land-Use on Bird Community Structure, Diversity, and Composition. *Landscape and Urban Planning* 90(3–4): 189–195
- ORTEGA-ÁLVAREZ R AND MACGREGOR-FORS I (2011a) Dusting-off the File: A Review of Knowledge on Urban Ornithology in Latin America. *Landscape and Urban Planning* 101(1): 1–10
- ORTEGA-ÁLVAREZ R AND MACGREGOR-FORS I (2011b) Spreading the Word: The Ecology of Urban Birds Outside the United States, Canada, and Western Europe. *The Auk* 128(2): 415–418
- OYARZABAL M, CLAVIJO J, OAKLEY L, BIGANZOLI F, TOGNETTI P, BARBERIS I, MATURO H, ARAGÓN R, CAMPANELLO P, PRADO D, OESTERHELD M AND LEÓN RJC (2018) Unidades de Vegetación de La Argentina. *Ecología Austral* 28(1): 40–63
- PELLISSIER V, COHEN M, BOULAY A AND CLERGEAU P (2012) Birds Are Also Sensitive to Landscape Composition and Configuration within the City Centre. *Landscape*

- and *Urban Planning* 104(2): 181–188. <http://dx.doi.org/10.1016/j.landurbplan.2011.10.011>
- DE LA PEÑA MR (2013) Nidos y reproducción de las Aves Argentinas. Serie Naturaleza, Conservación y Sociedad N° 8. Ediciones Biológica, Santa Fe
- PINHEIRO J, BATES D AND R CORE TEAM (2022)nlme: Linear and Nonlinear Mixed Effects Models. R package version 3.1-157, <<https://CRAN.R-project.org/package=nlme>>
- PRZYBYLSKA K, HAIDT A, MYCZKO Ł, EKNER-GRZYB A, ROSIN ZUZANNA M, KWIECIŃSKI Z, TRYJANOWSKI P, SUCHODOLSKA J, TAKACS V, JANKOWIAK Ł, TOBÓŁKA M, WASIELEWSKI O, GRACLIK A, KRAWCZYK AJ, KASPRZAK A, SZWAJKOWSKI P, WYLEGAŁA P, MALECHA AW, MIZERA T AND SKÓRKA P (2012) Local and Landscape-Level Factors Affecting the Density and Distribution of the Feral Pigeon *Columba Livia* Var. *Domestica* in an Urban Environment. *Acta Ornithologica* 47(1): 37–45
- R CORE TEAM (2022). R: A language and environment for statistical computing. R Foundation for Statistical Computing, Vienna, Austria. URL <https://www.R-project.org/>.
- RALPH CJ, DROEGE S AND SAUER JR (1995) Managing and monitoring birds using point counts:Standards and applications. Monitoring Bird Populations by Point Counts, eds Ralph CJ, Droege S, Sauer JR (U.S. Department of Agriculture Forest Service, Washington, DC), General Technical Report PSW-GTR-149, pp 161–170
- RAMIREZ CE, MARATEO G AND DE BELÁUSTEGUI H (2016) Inventario de Aves Del Barrio Centro de La Ciudad de Luján, Buenos Aires, Durante El Período No Reproductivo. *Revista del Museo de La Plata* 1(1): 21–28
- ROSSETTI MA AND GIRAUDO AR (2003) Comunidades de Aves de Bosques Fluviales Habitados y No Habitados Por El Hombre En El Río Paraná Medio, Argentina. *Hornero* 18(2): 89–96
- SCHULZE CH, WALTERT M, KESSLER PJA, PITOPANG R, SHAHABUDDIN, VEDDELER D, MÜHLENBERG M, GRADSTEIN SR, LEUSCHNER C, STEFFAN-DEWENTER I AND TSCHARNTKE T (2004) Biodiversity Indicator Groups of Tropical Land-Use Systems: Comparing Plants, Birds, and Insects. *Ecological Applications* 14(5): 1321–1333
- DA SILVA BF, PEÑA JC, VIANA-JUNIOR AB, VERGNE M AND PIZO MA (2021) Noise and Tree Species Richness Modulate the Bird Community Inhabiting Small Public Urban Green Spaces of a Neotropical City. *Urban Ecosystems* 24(1): 71–81
- SILVA CP, SEPÚLVEDA RD AND BARBOSA O (2016) Nonrandom Filtering Effect on Birds: Species and Guilds Response to Urbanization. *Ecology and Evolution* 6(11): 3711–3720
- STORCH D, BOHDALOVÁ E AND OKIE J (2018) The More-Individuals Hypothesis Revisited: The Role of Community Abundance in Species Richness Regulation and the Productivity–Diversity Relationship. *Ecology Letters* 21(6): 920–937
- TANG Q, LOW GW, LIM JY, GWEE CY AND RHEINDT FE (2018) Human Activities and Landscape Features Interact to Closely Define the Distribution and Dispersal of an Urban Commensal. *Evolutionary Applications* 11(9): 1598–1608
- TRATALOS J, FULLER R, EVANS K, DAVIES RG, NEWSON SE, GREENWOOD JJD AND GASTON KJ (2007) Bird Densities Are Associated with Household Densities. *Global Change Biology* 13(8): 1685–1695
- UNITED NATIONS (2015)Transforming our world: the 2030 Agenda for Sustainable Development. Division for Sustainable Development Goals: New York, NY, USA
- VIGNOLI L, SCIRÈ S AND BOLOGNA MA (2013) Rural–Urban Gradient and Land Use in a Millenary Metropolis: How Urbanization Affects Avian Functional Groups and the Role of Old Villas in Bird Assemblage Patterning. *Web Ecology* 13(1): 49–67
- VILLEGAS M AND GARITANO-ZAVALA A (2010) Bird Community Responses to Different Urban Conditions in La Paz, Bolivia. *Urban Ecosystems* 13(3): 375–391