



<https://doi.org/10.15517/rev.biol.trop.v70i1.48957>

Anatomy and histology of the digestive tract and immunolocalization of Npy in the fish *Cichlasoma dimerus* (Cichliformes: Cichlidae)

Andrés Breccia^{1,2};  <https://orcid.org/0000-0003-4902-1024>
Mónica Alejandra Palmieri¹;  <https://orcid.org/0000-0002-3652-3589>
María Paula Di Yorio^{1,2};  <https://orcid.org/0000-0003-3225-9327>
Ariadna Gabriela Battista²;  <https://orcid.org/0000-0001-9374-9309>
Paula Gabriela Vissio^{1,2};  <https://orcid.org/0000-0002-0240-9534>
Daniela Irina Pérez Sirkin^{1,2*};  <https://orcid.org/0000-0002-5854-7995>

1. Departamento de Biodiversidad y Biología Experimental, Facultad de Ciencias Exactas y Naturales, Universidad de Buenos Aires, Ciudad Universitaria, Buenos Aires, Argentina; breccia94@gmail.com, monica.ale.palmieri@gmail.com, mariapauladiyorio@gmail.com, pvissio@gmail.com, daniperezsirkin@gmail.com (*Correspondence)
2. Instituto de Biodiversidad y Biología Experimental y Aplicada (IBBEA), Consejo Nacional de Investigaciones Científicas y Técnicas- Universidad de Buenos Aires (CONICET-UBA), Buenos Aires, Argentina; ariadnabattista@gmail.com

Received 01-XI-2021. Corrected 04-III-2022. Accepted 12-V-2022.

ABSTRACT

Introduction: The digestive tract of Neotropical cichlids has not been deeply studied, and it is a fundamental topic for understanding fish physiology, nutrition, trophic associations, and evolution.

Objective: To describe anatomically and histologically the digestive tract of the Neotropical cichlid fish *Cichlasoma dimerus* and to immunolocalize the orexigenic peptide (Npy) along the intestine.

Methods: We euthanized 14 adult individuals and fixed the organs in Bouin's solution; we stained 7 µm thick paraffin sections for general description and with Alcian Blue (pH = 2.5, AB) and Periodic acid-Schiff (PAS) to identify acid or neutral glycoconjugates, respectively. Additionally, we performed immunohistochemistry for Npy in 3 adult individuals. We manually counted PAS- and AB-positive cells, and Npy-immunoreactive cells per fold.

Results: There is a short oesophagus, a sac-like stomach, and a tubular intestine with two loops. The oesophagus has a stratified epithelium with a high density of PAS- and AB-positive goblet cells and striated muscle fibers in the *tunica muscularis*. The stomach *mucosa* is formed by simple columnar epithelium. The intestine has a simple columnar epithelium, with brush border and interspersed PAS- and AB-positive goblet cells, and Npy-immunoreactive cells. There is an ileorectal valve in the transition between the posterior intestine and the rectum. This last gut portion has goblet cells and a thicker *tunica muscularis*.

Conclusions: *C. dimerus* shares features with other Neotropical cichlids, but the goblet cells and gastric glands distribution seems to be unique for the species. To our understanding, this is the first work to describe Npy-immunoreactive cells distribution in the intestine of a Neotropical cichlid fish.

Key words: goblet cells; histomorphology; histochemistry; immunohistochemistry; neotropical cichlids.



Cichlids are one of the higher diversity families among bony fishes with more than 200 genera and 1 700 species recognized (Nelson et al., 2016). Their geographical distribution ranges from Africa, Middle East, and India to Central and South America, these last being referred to as New World or Neotropical cichlids (Nelson et al., 2016). One factor that contributed to the high diversification of this family is the differential ability of each species to consume different food types (Axelrod & Burgess, 1979). Gross morphology examination of the digestive tract and feeding structures in cichlid fish has allowed establishing common features and trends among species, with respect to their diets, ontogeny, life histories, and ecological and phylogenetic relationships (López-Fernandez et al., 2012; Wagner et al., 2009; Zihler, 1981).

Histological and/or histochemical characterizations of the digestive tract improve knowledge about certain topics of fish biology, like trophic preferences and nutrition requirement (Rašković et al., 2011), digestive physiology (Beveridge & Baird, 2000), parasitology (de Oliveira et al., 2019), toxicology (Cengiz & Unlu, 2006; Dane & Şişman, 2020), and phenotypic plasticity (Gaucher et al., 2012; Pervin et al., 2020; Vidal et al., 2014). Considering the number of cichlids species recognized, there are few works about the histological features of their digestive tract of adult animals. To our knowledge, these are mainly focused on the African cichlids species, particularly on genus *Oreochromis* (Al-Hussaini, 1949; Caceci et al., 1997; Gargiulo et al., 1997; Morrison & Wright Jr, 1999; Osman & Caceci, 1991; Pasha, 1964; Scocco et al., 1996; Scocco et al., 1997; Scocco et al., 1998), and there are few works for Neotropical cichlids, (Arman & Ucuncu, 2017; da Silva et al., 2012; Hopperdietzel et al., 2014; Ramírez Espitia et al., 2020).

Gastrointestinal endocrine cells are distributed in the *mucosa* of the digestive tract (Banan Khojasteh, 2012). Their secretion control digestion, gut motility, enzyme secretion, nutrient absorption, among others (Volkoff, 2016). An important hormone involved in

feeding behaviour is the neuropeptide Y (Npy). This peptide was described in both the brain and gastrointestinal tract of a vast number of species, acting as a powerful orexigenic neuropeptide, stimulating food intake (Matsuda et al., 2012). The number and distribution of Npy immunoreactive (Npy-ir) cells in the gastrointestinal tract vary depending on the species and the nutritional status (Hernández et al., 2018; Pereira et al., 2015; Vigliano et al., 2011). In cichlids, there is only one study analyzing the distribution of these cells in Mozambique Tilapia *Oreochromis mossambicus* (Pereira et al., 2017).

Cichlasoma dimerus (Heckel 1840) is a Neotropical cichlid fish that inhabits the Parana River Basin in South America (Kullander, 1983). Adults can reach 12 cm of standard length (SL) and their diet mainly consists of little aquatic insects, such as larvae of chironomidae, ephemeroptera, odonata, and trichopteran and, in lower proportion, little fishes and crustaceans (Almirón et al., 2015). In recent years, it has become an excellent animal model for different kinds of studies (Pandolfi et al., 2009), that include more than 60 research. Given the importance of the digestive tract in the overall biology of fish and the scarce information published about this topic in Neotropical cichlids, the work aims to describe anatomical, histological, and histochemical features of the digestive tract of *C. dimerus*, together with the immunolocalization of Npy-ir cells.

MATERIALS AND METHODS

Animals: *C. dimerus* adults of both sexes were captured in “Esteros del Riachuelo”, Corrientes, Argentina (27°12'50" S & 58°11'50" W) and transferred to the laboratory, where they were acclimated and maintained in 130 L freshwater tanks under a 14:10 light/dark cycle and a temperature of 25 ± 2 °C for a year. Animals were fed *ad libitum* once a day with commercial pellets (Kilomax Iniciador, #310; Mixes del Sur, Provincia de Buenos Aires, Argentina). Fish were handled following the Principles of Laboratory Animal Care, which

were approved by the Comisión Institucional para el Cuidado y Uso de Animales de Laboratorio (CICUAL), FCEyN, UBA, Argentina (Protocol #26).

Morphometric parameters and histological characterization: Adult fish (14 individuals) were randomly selected, and SL, and body weight (BW) were measured. Then, 4 h after the last feeding, they were euthanized by decapitation after anesthetized with benzocaine 0.1 %. Digestive tracts were extracted, and the intestinal lengths (IL) were measured. With those parameters, we calculated the Zihler index (ZI) and the Relative Intestinal Length (RIL) as $ZI = IL/(BW^{1/3})$ and $RIL = IL/SL$, according to Al-Hussaini (1949), Zihler (1981), and Karachle and Stergiou (2010). The statistical comparison of BW, SL, IL, ZI, and RIL between males (N = 7) and females (N = 7) was made by different one-way ANOVA using the Infostat 2017 software (FCA, Universidad Nacional de Córdoba, Argentina). Results are expressed as mean \pm SEM.

Digestive tracts were split into four recognizable regions: oesophagus, stomach, intestine, and rectum. As in fish no marked morphological distinction could be observed along the intestine (Banan Khojasteh, 2012), we divided it into equal sections for the histological process. The organs were fixed in Bouin's solution for 24 h and they were dehydrated through crescent-gradient ethanol solutions (70°, 90°, 96°, 100°), cleared in xylene, and embedded in paraplast (Fisherbrand; Fisher Scientific, Washington, DC, USA) (Pérez Sirkin et al., 2013). The samples were cut in 7 μ m coronal or parasagittal sections and mounted on gelatin-coated slides in a way that the same area of interest was available for the different histological procedures.

For histological characterization, different sections from all the collected organs were stained with modified Masson's trichrome (mMT) and haematoxylin and eosin (H&E). The histochemical stains Alcian blue (AB) (pH = 2.5) and periodic acid-Schiff (PAS), both plus haematoxylin, were performed to identify

acid or neutral glycoconjugates, respectively. The slides were examined and digitally photographed with a NIKON Microphot FX microscope.

Npy-ir cells localization: For immunohistochemistry, the samples (N = 3) obtained and cut as it was described above were deparaffinized in xylene and rehydrated in a descending series of ethanol solutions (100°, 96°, 90°, 70°), and then, in a phosphate-buffered saline (PBS) (pH 7.4). Later, endogenous peroxidase activity was blocked by incubation in 0.3 % hydrogen peroxide solution. The reduction of nonspecific staining was performed by incubation in PBS containing 5 % (w/v) non-fat dry milk at room temperature (RT). After that, the slides were maintained at 4 °C overnight with the primary anti-NPY antibody (dilution 1:2 500 in PBS, rabbit anti-porcine NPY serum, Peninsula Laboratories Inc., CA). The next day, they were washed in PBS and incubated for 1 hour with biotinylated anti-rabbit immunoglobulin (Ig) G (dilution 1:500 in PBS; Sigma-Aldrich, St Louis, MO, USA) at RT. Subsequently, peroxidase-conjugated streptavidin (dilution 1:500 in PBS; Invitrogen, Carlsbad, CA, USA) was applied for 1 hour at RT. The final reactive products were visualized with DAB Substrate Kit (Cell Marque, Rocklin, CA, USA). Then, the sections were rehydrated, slightly counter-stained with haematoxylin, and mounted with synthetic Canada balsam (Biopack, Buenos Aires, Argentina). The specificity of the antiserum was previously performed in this species with primary antisera preadsorbed with porcine NPY (Pérez Sirkin et al., 2013). Omission of first antibody control was performed.

Specific cell abundance: The abundance of Npy-ir, AB-, and PAS-positive cells were analyzed in randomly selected slides (seven slides per region) of the different organs studied. The numbers of positive cells per fold were counted manually under a light microscope, with the precaution that the same cell was not considered twice, and then, the average of each



region was estimated. Results are presented qualitatively, reflecting the density of positive cells per fold.

RESULTS

Morphometric parameters and histological characterization: The *C. dimerus* individuals (BW = 29.52 ± 3.18 g and SL = 8.28 ± 0.24 cm) presented a digestive tract with a short oesophagus and a blind-sac stomach. From the left side of the junction between them arose an intestine (IL = 10.81 ± 0.50 cm), with two loops in its path: on the left side, the anterior portion turned out to a cranial direction, whereas, on the right side, the second loop returned to a caudal direction concluding in the rectum and the anus (Fig. 1A). No pyloric ceca were observed in any of the animals. The mean RIL and ZI were 1.22 ± 0.07 and 3.29 ± 0.20, respectively. All the parameters evaluated did not significantly differ between males

(RIL = 1.29 ± 0.07; ZI = 3.49 ± 0.17) and females (RIL = 1.19 ± 0.10; ZI = 3.20 ± 0.29).

Histologically, the typical four concentric *tunicae* of fish digestive tubes (Genten et al., 2009) were recognized in the examined organs: *mucosa*, *submucosa*, *muscularis*, and *serosa*. The oesophagus (Fig. 1B, Fig. 1C, Fig. 1D, Fig. 1E, Fig. 1F, Fig. 1G) consisted of a *tunica mucosa* with stratified epithelium, numerous folds (Fig. 1B, Fig. 1C), and abundant AB- (Fig. 1D, Fig. 1F) and PAS-positive (Fig. 1E, Fig. 1G) goblet cells the latter being more abundant all along the oesophagus. The AB-positive cell number increased from anterior to posterior, while the PAS-positive cell number decreased in the same direction (Table 1 and Fig. 1D, Fig. 1E, Fig. 1F, Fig. 1G). It was not possible to distinguish the *lamina propria* from *tunica submucosa* due to the absence of a continuous layer of muscular fibers. In both cases, abundant connective tissue with fibrocytes, collagenous fibers, and blood vessels

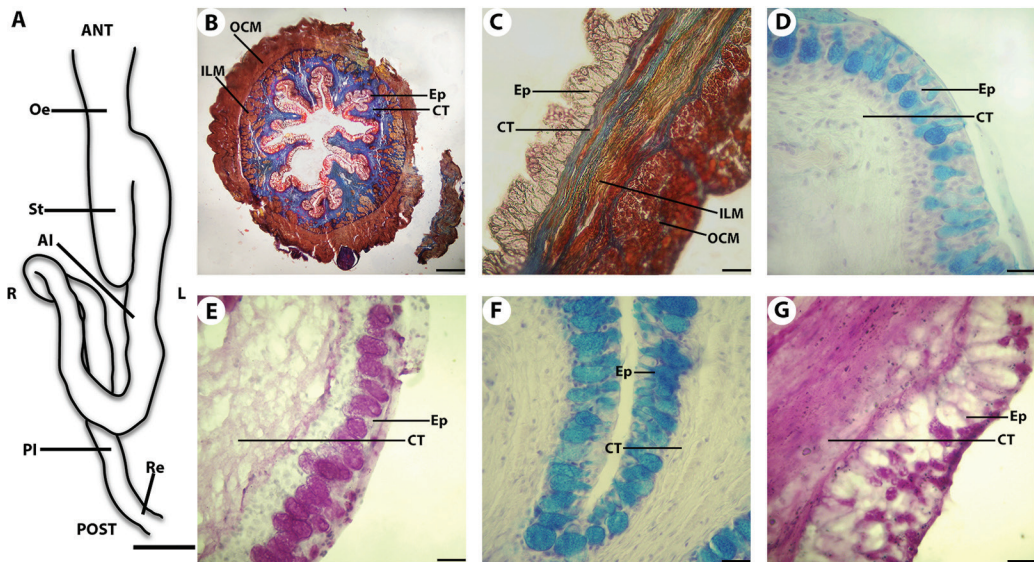


Fig. 1. A. Drawing of the ventral view of the digestive tract. Bar = 1cm. (B. C. D. E. F. and G. Microphotographs of the oesophagus of *Cichlasoma dimerus*. B. Oesophagus transversal panoramic view. mMT. Bar = 200 µm. C. Longitudinal section of the oesophagus. mMT. Bar = 35 µm. D. AB positive goblet cells in the anterior oesophageal *mucosa*. AB pH = 2.5. Bar = 20 µm. E. PAS positive goblet cells in the anterior oesophageal *mucosa*. PAS. Bar = 20 µm. F. AB positive goblet cells in the posterior oesophageal *mucosa*. AB pH = 2.5. Bar = 20 µm. G. PAS positive goblet cells in the posterior oesophageal *mucosa*. PAS. Oesophagus (Oe), stomach (St), anterior intestine (AI), posterior intestine (PI), rectum (Re), anterior (ANT), posterior (POST), left (L), right (R), epithelium (Ep), connective tissue (CT), inner longitudinal muscle layer (ILM), outer circular muscle layer (OCM).

TABLE 1
Relative abundance of Alcian Blue (AB), Periodic Acid Schiff (PAS) and Npy-immunoreactive (-ir) positive cells along the different regions of the digestive tract of *Cichlasoma dimerus*

Technique	Region									
	Oesophagus		Stomach			Intestine			Rectum	
	Anterior	Posterior	Cardiac	Fundic	Pyloric	Anterior → Posterior				
AB pH 2.5	+++	++++	-	-	-	+++	+++	+++	++	+
PAS	++++	+++	Δ	Δ	Δ	++	++	+++	+	+
Npy	NE	NE	NE	NE	NE	ooo	oo	oo	o	-

Note: (-) null; (NE) not evaluated; (+) low, (++) medium, (+++) high and (++++) very high density of goblet cells per fold; (Δ) reactivity in the apical border of the epithelial cells; (o) low, (oo) medium and (ooo) high density of Npy-ir cells per fold.

was observed. No glands projecting to the connective tissue were observed. The *tunica muscularis* consisted of two striated muscle layers: a longitudinal inner one, with some bundles of muscle projected to the connective tissue, and a circular outer one.

In the junction between the oesophagus, the stomach, and the intestine, the striated muscle was gradually replaced by smooth muscle fibers. The muscle layers orientation alternated concerning that described above: the longitudinal layer became external and the circular internal in the stomach and the intestine. The oesophagus' epithelium was abruptly replaced with the typical epithelium of the stomach and the intestine.

The stomach (Fig. 2) was a blind sac that presented a *tunica mucosa* with simple columnar epithelium (Fig. 2A, Fig. 2B) and oxynticopeptic (gastric) glands in the *lamina propria* (Fig. 2C). The apical border of the epithelium was PAS-positive (Fig. 2D) and not goblet cells were detected. The underlying connective tissue of the *tunica submucosa* presented a dense bundle of collagen fibers under the epithelium and a loose one near the *tunica muscularis*. Two regions could be distinguished in the stomach, according to the presence/absence of gastric glands and their relative anatomical position (Fig. 2E): a glandular stomach, that is proximal, next to the oesophagus and the intestine, with the presence of gastric glands except in the most anterior portion, and a non-glandular stomach, that is in the distal region of the blind sac. The gastric glands

presented polyhedral cells with a spherical nucleus, prominent nucleolus, and acidophilic cytoplasm (Fig. 2C). They formed clusters surrounded by connective tissue from the *lamina propria* and scattered smooth muscle fibers.

Regarding the intestine (Fig. 3), modifications of the tube diameter, length and morphology of the folds, and the abundance of some cellular types were analysed. The intestinal *mucosa* presented a simple columnar epithelium, with enterocytes with brush border and interspersed AB- (Fig. 3C) and PAS- (Fig. 3D) positive goblet cells. These goblet cells decreased in number from anterior to posterior, with a greater abundance of AB- positive cells all along the intestine (Table 1). The PAS-positive cells slightly increase in density in the middle intestine and then decrease in the last portion of the gut. The *mucosa* folds decreased in number and height from anterior to posterior. In the foregut, they presented thin finger-like projections (Fig. 3A, Fig. 3B), whilst in the hindgut, they were shorter and with a foliaceous appearance (Fig. 3E). Particularly, in this region, enterocytes with large clear vacuoles in the apical cytoplasm were found (Fig. 3F). All along the intestine, the connective tissue layer of the *lamina propria* and the *tunica submucosa* was thinner than in the oesophagus and the stomach, with isolated smooth muscle fibers. The two layers of the *tunica muscularis* present similar width of smooth muscle fibers. The myenteric plexus between the two muscle layers were observed all along the intestine.

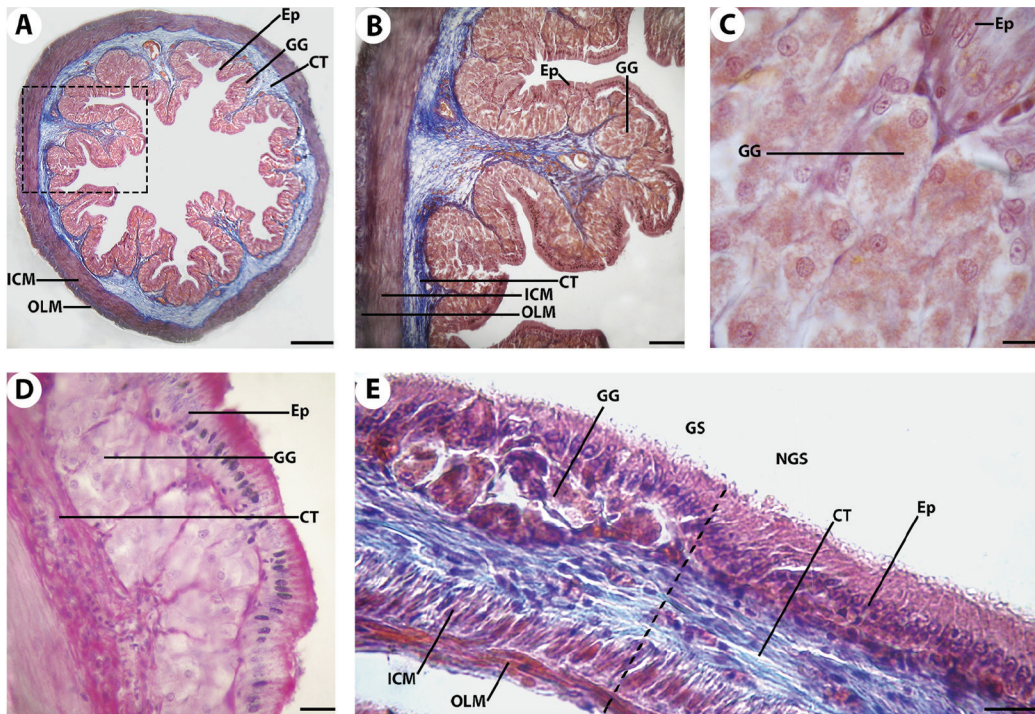


Fig. 2. Microphotographs of the stomach of *Cichlasoma dimerus*. **A.** Stomach transversal panoramic view. mMT. Bar 260 μm . **B.** Enlarged image from A. mMT. Bar = 100 μm . **C.** Gastric glands underlying the gastric epithelium. mMT. Bar = 8 μm . **D.** Gastric mucosa PAS positive in the apical border. PAS Bar = 20 μm . **E.** Longitudinal section shows the boundaries (dotted line) between glandular and non-glandular region of the stomach given by the absence of gastric glands in the latter. mMT. Bar = 20 μm . Epithelium (Ep), connective tissue (CT), gastric glands (GG), inner circular muscle layer (ICM), outer longitudinal muscle layer (OLM), glandular stomach (GS), non-glandular stomach (NGS).

The intestinal diameter decreased towards the posterior regions.

The transition between the hindgut and the rectum was abruptly marked by an ileo-rectal valve where thickening of the circular muscle layer, a sudden change in gut diameter, and fewer mucosal folds were observed (Fig. 3G). The rectum (Fig. 3H) presented a simple columnar epithelium with a high density of AB- and PAS-positive goblet cells. The inner circular muscle layer was thicker than the outer longitudinal.

Npy-ir cells localization: We found Npy-ir cells scattered between the enterocytes of the intestine (Fig. 3I), decreasing in density from anterior to posterior (Table 1). These cells were open-type (Barrios et al., 2020), with a narrow

and elongated shape and a round nucleus. The cytoplasm was projected to the apical and basal regions, with strong immunolabel in the perinuclear zone. In the last portion of the intestine and in the rectum, no Npy-ir cells were detected in the epithelium. Besides, Npy-ir fibers into the myenteric plexus between muscle layers of the *tunica muscularis* were observed all along the intestine and the rectum.

DISCUSSION

The ability of Neotropical cichlids to diversify and colonize a great variety of habitats along Central and South America has become this group in the subject of numerous studies related to their behavioral, biogeographical, ecomorphological, and phylogenetic aspects

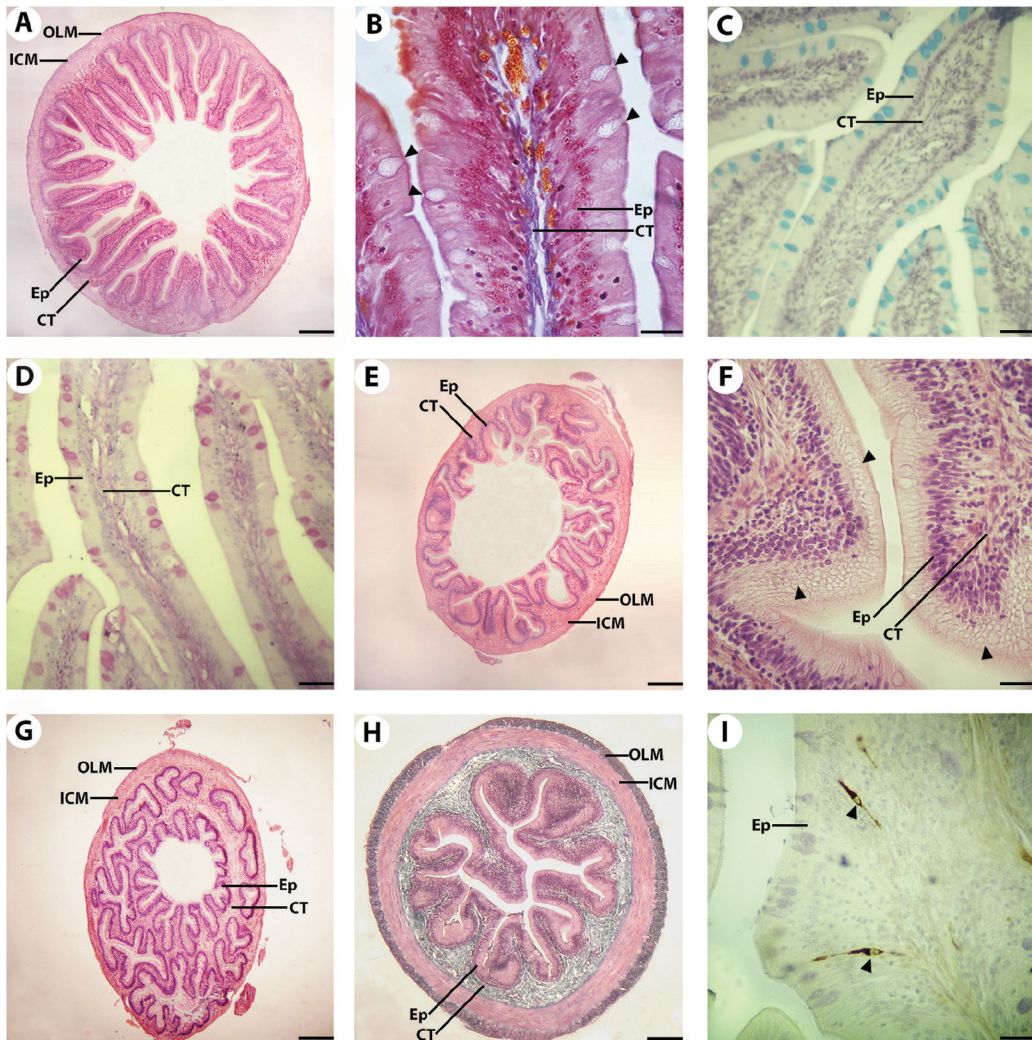


Fig. 3. Microphotographs of the intestine of *Cichlasoma dimerus*. **A.** Anterior intestine transversal panoramic view. Mucosal folds are long, finger-like projections. H&E. Bar = 200 μ m. **B.** Anterior intestine *mucosa* with enterocytes with brush border and interspersed goblet cells (arrowheads). mMT. Bar = 20 μ m. **C.** AB positive goblet cells in the anterior intestinal *mucosa*. AB pH = 2.5. Bar = 30 μ m. **D.** PAS positive goblet cells in the posterior intestinal *mucosa*. PAS. Bar = 30 μ m. **E.** Overview of the posterior intestine, with shorter and fewer mucosal folds. Bar = 200 μ m. **F.** Enterocytes of the posterior region with supranuclear vacuoles (arrowheads) in the apical cytoplasm. H&E. Bar = 20 μ m. **G.** Transition zone between posterior intestine and rectum (ileorectal valve). H&E. Bar = 200 μ m. **H.** Coronal section of the rectum. mMT. Bar = 125 μ m. **I.** Anterior intestinal *mucosa* with Npy-ir cells (arrowheads) interspersed in the epithelium. Npy IHQ + haematoxylin. Bar = 20 μ m. Epithelium (Ep), connective tissue (CT), inner circular muscle layer (ICM), outer longitudinal muscle layer (OLM).

(Malabarba & Malabarba, 2020). Given that there is limited information about the digestive tube of new-world cichlids, *C. dimerus* has arisen as an interesting study model that could provide new perspectives on the feeding biology of this group.

The stomach's extendible blind pouch, the left-hand exit of the stomach to the anterior intestine, and the first intestinal loop on the left side observed in *C. dimerus*, are considered synapomorphies within the Cichlidae family (Zihler, 1981). Also, we observed a short



intestine with little coiling and low values of ZI and RIL. These morphological characteristics could be related to the dietary habits and/or the evolutionary history of the Neotropical cichlids. Regarding the first, many works have linked the gross morphology of the gastrointestinal tract with the dietary habits of a wide variety of fish species (Al-Hussaini, 1949; Karachle & Stergiou, 2010; Kramer & Bryant, 1995; Zihler, 1981). Both indexes obtained are close to the values described for omnivorous species with a preference for carnivory (Karachle & Stergiou, 2010). In this sense, *C. dimerus* diet in wild environments consists of microinvertebrates (Almiron et al., 2015). Concerning the phylogenetic context, many Neotropical cichlid species have lower values of ZI and RIL, with shorter intestines with little or no coiling too (Kramer & Bryant, 1995; Zihler, 1981). These species tend to be substrate-sifting invertivores, epibenthic invertebrate gleaners, and piscivores (López-Fernández et al., 2012; Montaña & Winemiller, 2013).

Some of the functions described for the oesophagus in fish have been related to food passage, digestion, and osmoregulation (Wilson & Castro 2010). In this sense, the stratified epithelium with mucus cells observed in our species could act as a mechanical and chemical barrier. The mucopolysaccharides secreted to the oesophageal lumen may help in lubrication, defence against virus and bacteria, and digestion (Genten et al., 2009; Wilson & Castro, 2010). The great abundance of mucus cells is common along the oesophagus of both Neotropical (da Silva et al., 2012; Hopperdietzel et al., 2014) and African cichlids (Morrison & Wright Jr, 1999; Okuthe & Bhomela, 2020; Scocco et al., 1998), although some differences were reported about their distribution pattern. For example, in *Amatitlania nigrofasciata*, PAS-positive cells are abundant in the anterior portion; the AB-positive cells are uniformly distributed (Hopperdietzel et al., 2014). In our study PAS-positive cells present a similar distribution, but the AB-positive cells increase from anterior to posterior.

Concerning the transition zone between the oesophagus, the stomach, and the intestine, the abrupt change in the epithelial morphology and the alternate of striated and smooth muscle fibers are shared features in most of the cichlids' alimentary tracts described so far (Ansari et al., 2020; Caceci et al., 1997; da Silva et al., 2012; Hopperdietzel et al., 2014; Morrison & Wright Jr, 1999; Okuthe & Bhomela, 2020; Pasha, 1964). Because of the presence of a thicker lamina *muscularis* with a high abundance of striated muscle fibers, this region may function as a pyloric sphincter, preventing that food passes directly into the intestine without being chemically digested (Ansari et al., 2020) and allowing regurgitation of food from the stomach into the oesophagus (Hopperdietzel et al., 2014).

In Neotropical cichlid species, there are some common traits in the histology of the stomach wall, such as the simple columnar epithelium with PAS-positive apical border, the absence of goblet cells, and the presence of gastric glands in all the *lamina propria* (da Silva et al., 2012; Hopperdietzel et al., 2014; Ramírez Espitia et al., 2020). We found these features in *C. dimerus*, although the blind-end of the stomach lacks gastric glands. Despite its phylogenetical proximity, in African cichlids, there are different histological arrangements of the gastric *mucosa* across the species. For example, gastric glands can be present throughout its extension or absent in the pyloric region, and different types and distribution of mucous glands have been reported (Ansari et al., 2020; Gargiulo et al., 1997; Morrison & Wright Jr, 1999; Okuthe & Bhomela, 2020; Pasha, 1964; Scocco et al., 1996).

We identified two distinct secretory cells in the gastric mucosa: the oxyntincopeptic and the epithelial ones with a PAS-positive apical border. The oxyntincopeptic cells secrete HCl, denaturing protein and converting the pepsinogen (secreted by the same cell) into the active proteolytic form pepsin (Bakke et al., 2010). The Neutral glycoconjugates on the apical border protect the mucosa from the acid environment (Ghosh & Chakrabarti, 2015).

Additionally, this secretion allows the absorption of disaccharides and short-chain fatty acids; and the mixing and emulsion of food particles with digestive enzymes (Mokhtar et al., 2017).

Along the intestine, we observed changes in the histology of the *tunica mucosa* related to the digestive physiology of the organ. The characteristic mucosal fold shape of the anterior region may facilitate the absorption of water-soluble molecules in the brush border and short and medium-chain fatty acids (Bakke et al., 2010). In the posterior region, enterocytes exhibit supranuclear vacuoles, which are probably due to the absorption of large peptides by endocytosis (Van den Ingh et al., 1991). Goblet cell general distribution seems to be a common feature in several carnivore species (Pereira et al., 2020), and in the omnivorous Centroamerican cichlid *A. nigrofasciata* (Arman & Ucuncu, 2017). It is proposed that intestinal neutral glycoproteins would be involved in the absorption and transportation of molecules through the membranes, whereas the acidic glycoproteins would be a lubricative and protective secretion (Arman & Ucuncu, 2017).

In *C. dimerus*, the transition between the distal portion of the intestine and the rectum is marked by an ileorectal valve, which would help to control faecal egestion. This valve was also observed in cichlids such as *O. niloticus* (Morrison & Wright Jr, 1999). The rectum has abundant goblet cells and a thick muscular layer, which may facilitate the egestion of faecal materials to the anus (Mokhtar et al., 2017).

Npy is considered one of the most potent orexigenic peptides in fish acting on the central nervous system (Matsuda et al., 2012; Volkoff, 2016). In *C. dimerus*, Npy-ir neurons localization and Npy-ir fibers abundance have been already studied (Pérez Sirkin et al., 2013). Despite its central function, the knowledge about the specific functions of this neuropeptide on the digestive system is scarce. To our knowledge, this is the first report to describe Npy-ir cells in a Neotropical cichlid species. The pattern observed in *C. dimerus* was also described for several species, as *O. niloticus* (Pereira et al., 2017), *Rhamdia quelen* (Hernández et al.,

2018), *Odontesthes bonariensis* (Vigliano et al., 2011), *Chanos chanos* (Lin et al., 2017), *Salminus brasiliensis* (Pereira et al., 2015), *Ictalurus punctatus* (Min et al., 2009), *Prochilodus lineatus* (Barrios et al., 2020), *Colossoma macropomum*, *Pseudoplatystoma reticulatum* × *Leiarius marmoratus* (Pereira et al., 2020). The anterior portion of the intestine would be a source of peripheral signals capable of stimulating food intake when the gut is empty (Vigliano et al., 2011). Pereira et al. (2017) argued that the density of Npy-ir cells observed in the anterior intestine of several species is high because of the connection with vagal afferents that send nutritional information to the central nervous system (Olsson, 2010).

To sum up, in this work, we described the digestive tract of the South American cichlid fish *C. dimerus*. The gross morphology and the calculated intestinal indexes are close to those reported for omnivorous Neotropical cichlids with a preference for carnivory. Besides, the histological and histochemical characteristics found present some unique features, such as the distribution of the goblet cells and gastric glands. Considering the morphological and histological differences in the digestive tract across the cichlids, as well as the scarce information about this topic in Neotropical species, the present study provides new perspectives on this issue, in relation to feeding habits, digestive physiology, and phylogenetic context.

Ethical statement: the authors declare that they all agree with this publication and made significant contributions; that there is no conflict of interest of any kind; and that we followed all pertinent ethical and legal procedures and requirements. All financial sources are fully and clearly stated in the acknowledgements section. A signed document has been filed in the journal archives.

ACNOWLEDGMENTS

We are grateful for the support of Consejo Nacional de Investigaciones Científicas y Técnicas (CONICET; PIP



2014-2016:11220130100501CO to P.G.V.), Universidad de Buenos Aires (UBACyT 20020190100294BA to P.G.V.) and Agencia Nacional de Promoción Científica y Tecnológica (PICT-2018- 02577 to P.G.V.).

RESUMEN

Anatomía e histología del tracto digestivo e inmunolocalización del Npy (péptido orexigénico) en el pez *Cichlasoma dimerus* (Cichliformes: Cichlidae)

Introducción: El tracto digestivo de los cíclidos neotropicales no ha sido profundamente estudiado y es un tema fundamental para entender la fisiología, nutrición, asociaciones tróficas y evolución de los peces.

Objetivo: Describir anatómica e histológicamente el tracto digestivo del pez cíclido neotropical *Cichlasoma dimerus* e inmunolocalizar el péptido orexigénico (Npy) a lo largo del intestino.

Métodos: Sacrificamos 14 individuos adultos y fijamos los órganos en solución de Bouin; teñimos secciones de parafina de 7 µm de espesor para una descripción general y con azul alcian (pH = 2.5, AB) y ácido periódico-Schiff (PAS) para identificar glicoconjugados ácidos o neutros, respectivamente. Además, en 3 individuos adultos se realizaron inmunohistoquímicas contra Npy. Contamos manualmente las células PAS y AB positivas, y las células inmunorreactivas a Npy por pliegue.

Resultados: Hay un esófago corto, un estómago en forma de saco y un intestino con dos vueltas. El esófago tiene un epitelio estratificado con una alta densidad de células caliciformes PAS- y AB- positivas y fibras esqueléticas estriadas en las capas musculares. La mucosa del estómago está revestida por epitelio simple cilíndrico. El epitelio intestinal es simple cilíndrico con chapa estriada y células caliciformes PAS- y AB- positivas intercaladas, y células inmunorreactivas a Npy. Hay una válvula ileorrectal en la transición entre el intestino posterior y el recto. Esta última porción intestinal tiene células caliciformes y una túnica muscular más gruesa.

Conclusiones: *C. dimerus* comparte características con otros cíclidos neotropicales, pero la distribución de las células caliciformes y las glándulas gástricas, serían rasgos propios de esta especie. A nuestro entender, este es el primer trabajo que describe la distribución de células inmunorreactivas a Npy en el intestino de un pez cíclido neotropical.

Palabras clave: células caliciformes; histomorfología; histoquímica; inmunohistoquímica; cíclidos neotropicales.

REFERENCES

- Al-Hussaini, A. H. (1949). On the functional morphology of the alimentary tract of some fish in relation to differences in their feeding habits: anatomy and histology. *Journal of Cell Science*, 3(10), 109–139.
- Almirón, A. E., Casciotta, J. R., Ciotek, L., & Giorgis, P. (2015). *Guía de los peces del Parque Nacional Pre-Delta* (2nd Ed.). Administración de Parques Nacionales.
- Ansari, M. H., Ebrahimi, M., & Esmaeili, H. R. (2020). Morphohistological characteristic of digestive tract of an endemic cichlid fish, *Iranocichla hormuzensis* Coad, 1982 (Teleostei: Cichlidae). *International Journal of Aquatic Biology*, 8(1), 1–8.
- Arman, S., & Ucuncu, S. I. (2017). Histochemical characterization of convict cichlid (*Amatitlania nigrofasciata*) intestinal goblet cells. *Pakistan Journal of Zoology*, 49(2), 445–453.
- Axelrod, H. R., & Burgess, W. R. (1979). *African Cichlids of Lakes Malawi and Tanganyika*. Tropical Fish Hobbyist Publications.
- Bakke, A. M., Glover, C., & Krogdahl, Å. (2010). Feeding, digestion and absorption of nutrients. In M. Grosell, A. P. Farrell, & C. J. Brauner (Eds.), *Fish physiology: The multifunctional gut of fish* (pp. 57–110). Academic Press.
- Banan Khojasteh, S. M. (2012). The morphology of the post-gastric alimentary canal in teleost fishes: a brief review. *International Journal of Aquatic Science*, 3(2), 71–88.
- Barrios, C. E., Santinón, J. J., Domitrovic, H. A., Sanchez, S., & Hernandez, D. R. (2020). Localization and distribution of CCK-8, NPY, Leu-ENK-, and Ghrelin-in the digestive tract of *Prochilodus lineatus* (Valenciennes, 1836). *Anais da Academia Brasileira de Ciências*, 92.
- Beveridge, M. C. M., & Baird, D. J. (2000). Diet, feeding and digestive physiology. In M. C. M. Beveridge, & B. J. McAndrew (Eds.), *Tilapias: Biology and Exploitation* (pp. 59–87). Springer.
- Caceci, T., El-Habback, H. A., Smith, S. A., & Smith, B. J. (1997). The stomach of *Oreochromis niloticus* has three regions. *Journal of Fish Biology*, 50(5), 939–952.
- Cengiz, E. I., & Unlu, E. (2006). Sublethal effects of commercial deltamethrin on the structure of the gill, liver and gut tissues of mosquitofish, *Gambusia affinis*: a microscopic study. *Environmental Toxicology and Pharmacology*, 21(3), 246–253.

- Dane, H., & Şişman, T. (2020). A morpho-histopathological study in the digestive tract of three fish species influenced with heavy metal pollution. *Chemosphere*, 242, 125212.
- da Silva, M. R., Natali, M. R. M., & Hahn, N. S. (2012). Histology of the digestive tract of *Satanoperca pap-paterra* (Osteichthyes, Cichlidae). *Acta Scientiarum. Biological Sciences*, 34(3), 319–326.
- de Oliveira, M. I., de Matos, L. V., da Silva, L. A., Chagas, E. C., da Silva, G. S., & Gomes, A. L. (2019). The digestive tube of *Piaractus brachypomus*: gross morphology, histology/histochemistry of the mucosal layer and the effects of parasitism by *Neoechinorhynchus* sp. *Journal of Fish Biology*, 94(4), 648–659.
- Gaucher, L., Vidal, N., D'Anatro, A., & Naya, D. E. (2012). Digestive flexibility during fasting in the characid fish *Hyphessobrycon luetkenii*. *Journal of Morphology*, 273, 49–56.
- Gargiulo, A. M., Ceccarelli, P., Dall'Aglio, C., & Pedini, V. (1997). Ultrastructural study on the stomach of *Tilapia* spp. (Teleostei). *Anatomia, Histologia, Embryologia*, 26(4), 331–336.
- Genten, F. (2009). *Atlas of Fish Histology*. Science Publishers.
- Ghosh, S. K., & Chakrabarti, P. (2015). Histological and histochemical characterization on stomach of *Mystus cavasius* (Hamilton), *Oreochromis niloticus* (Linnaeus) and *Gudusia chapra* (Hamilton): Comparative study. *The Journal of Basic & Applied Zoology*, 70, 16–24.
- Hernández, D. R., Barrios, C. E., Santinón, J. J., Sánchez, S., & Baldisserotto, B. (2018). Effect of fasting and feeding on growth, intestinal morphology and enteroendocrine cell density in *Rhamdia quelen* juveniles. *Aquaculture Research*, 49(4), 1512–1520.
- Hopperditzel, C., Hirschberg, R. M., Hünigen, H., Wolter, J., Richardson, K., & Plendl, J. (2014). Gross morphology and histology of the alimentary tract of the convict cichlid *Amatitlania nigrofasciata*. *Journal of Fish Biology*, 85(5), 1707–1725.
- Karachle, P. K., & Stergiou, K. I. (2010). Intestine morphometrics of fishes: a compilation and analysis of bibliographic data. *Acta Ichthyologica et Piscatoria*, 40(1), 45–54.
- Kramer, D. L., & Bryant, M. J. (1995). Intestine length in the fishes of a tropical stream: 2. Relationships to diet—the long and short of a convoluted issue. *Environmental Biology of Fishes*, 42(2), 129–141.
- Kullander, S. O. (1983). *A revision of the South American cichlid genus Cichlasoma (Teleostei, Cichlidae)*. Swedish Museum of Natural History.
- Lin, X., Wang, P., Ou, Y., Li, J. E., & Wen, J. (2017). An immunohistochemical study on endocrine cells in the neuroendocrine system of the digestive tract of milkfish *Chanos chanos* (Forsskal, 1775). *Aquaculture Research*, 48(4), 1439–1449.
- López-Fernández, H., Winemiller, K. O., Montaña, C., & Honeycutt, R. L. (2012). Diet-morphology correlations in the radiation of South American geophagine cichlids (Perciformes: Cichlidae: Cichlinae). *PLOS ONE*, 7(4), e33997.
- Malabarba, L. R., & Malabarba, M. C. (2020). Phylogeny and classification of neotropical fish. In B. Baldisserotto, E. Urbinati, & J. Cyrino (Eds.), *Biology and physiology of freshwater neotropical fish* (pp. 1–19). Academic Press.
- Matsuda, K., Sakashita, A., Yokobori, E., & Azuma, M. (2012). Neuroendocrine control of feeding behavior and psychomotor activity by neuropeptide Y in fish. *Neuropeptides*, 46(6), 275–283.
- Min, H. E., Wang, K. Y., & Zhang, Y. (2009). Immunocytochemical identification and localization of diffuse neuroendocrine system (DNES) cells in gastrointestinal tract of channel catfish (*Ictalurus punctatus*). *Agricultural Sciences in China*, 8(2), 238–243.
- Mokhtar, D. M. (2017). *Fish histology: from cells to organs*. CRC Press.
- Montaña, C. G., & Winemiller, K. O. (2013). Evolutionary convergence in Neotropical cichlids and Nearctic centrarchids: evidence from morphology, diet, and stable isotope analysis. *Biological Journal of the Linnean Society*, 109(1), 146–164.
- Morrison, C. M., & Wright Jr, J. R. (1999). A study of the histology of the digestive tract of the Nile tilapia. *Journal of Fish Biology*, 54(3), 597–606.
- Nelson, J. S., Grande, T. C., & Wilson, M. V. (2016). *Fishes of the World*. John Wiley & Sons.
- Okuthe, G. E., & Bhomela, B. (2020). Morphology, histology and histochemistry of the digestive tract of the Banded tilapia, *Tilapia sparrmanii* (Perciformes: Cichlidae). *Zoologia*, 37, e51043.
- Olsson, C. (2010). The enteric nervous system. In M. Grosell, A. P. Farrell, & C. J. Brauner (Eds.), *Fish physiology: The multifunctional gut of fish* (pp. 319–340). Academic Press.
- Osman, A. H. K. & Caceci, T. (1991). Histology of the stomach of *Tilapia nilotica* (Linnaeus, 1758) from the River Nile. *Journal of Fish Biology*, 38, 211–223.
- Pandolfi, M., Cánepa, M. M., Meijide, F. J., Alonso, F., Vázquez, G. R., Maggese, M. C., & Vissio, P. G. (2009). Studies on the reproductive and developmental biology of *Cichlasoma dimerus* (Perciformes, Cichlidae). *Biocell*, 33(1), 1–18.



- Pasha, K. (1964). The anatomy and histology of the alimentary canal of herbivorous fish *Tilapia mossambica* (Peters). *Proceedings of the Indian Academy of Science B*, 54, 340–349.
- Pereira, R. T., Costa, L. S., Oliveira, I. R. C., Araújo, J. D. C., Aerts, M., Vigliano, F. A., & Rosa, P. V. (2015). Relative distribution of gastrin-, CCK-8-, NPY- and CGRP-immunoreactive cells in the digestive tract of dorado (*Salminus brasiliensis*). *Tissue and Cell*, 47(2), 123–131.
- Pereira, R. T., de Freitas, T. R., de Oliveira, I. R. C., Costa, L. S., Vigliano, F. A., & Rosa, P. V. (2017). Endocrine cells producing peptide hormones in the intestine of Nile tilapia: distribution and effects of feeding and fasting on the cell density. *Fish Physiology and Biochemistry*, 43(5), 1399–1412.
- Pereira, R. T., Nebo, C., de Paula Naves, L., Fortes-Silva, R., Regina Cardoso de Oliveira, I., Paulino, R. R., & Rosa, P. V. (2020). Distribution of goblet and endocrine cells in the intestine: A comparative study in Amazonian freshwater Tambaqui and hybrid catfish. *Journal of Morphology*, 281(1), 55–67.
- Pérez Sirkin, D. I., Suzuki, H., Cánepa, M. M., & Vissio, P. G. (2013). Orexin and neuropeptide Y: tissue specific expression and immunoreactivity in the hypothalamus and preoptic area of the cichlid fish *Cichlasoma dimerus*. *Tissue and Cell*, 45(6), 452–459.
- Pervin, M. A., Jahan, H., Akter, R., Omri, A., & Hossain, Z. (2020). Appraisal of different levels of soybean meal in diets on growth, digestive enzyme activity, antioxidant, and gut histology of tilapia (*Oreochromis niloticus*). *Fish Physiology and Biochemistry*, 46(4), 1397–1407.
- Ramírez Espitia, E. J., Hurtado Giraldo, H., & Gómez Ramírez, E. (2020). Anatomía general, histología y morfometría del sistema digestivo del pez *Pterophyllum scalare* (Perciformes: Cichlidae). *Revista de Biología Tropical*, 68(4), 1371–1383.
- Rašković, B. S., Stanković, M. B., Marković, Z. Z., & Poleksić, V. D. (2011). Histological methods in the assessment of different feed effects on liver and intestine of fish. *Journal of Agricultural Sciences*, 56(1), 87–100.
- Scocco, P., Accili, D., Menghi, G., & Ceccarelli, P. (1998). Unusual glycoconjugates in the oesophagus of a tilapia polyhybrid. *Journal of Fish Biology*, 53, 39–48.
- Scocco, P., Ceccarelli, P., & Menghi, G. (1996). Glycohistochemistry of the *Tilapia* spp. stomach. *Journal of Fish Biology*, 49(4), 584–593.
- Scocco, P., Menghi, G., & Ceccarelli, P. (1997). Histochemical differentiation of glycoconjugates occurring in the tilapia intestine. *Journal of Fish Biology*, 51, 848–857.
- Van den Ingh, T. S. G. A. M., Kroghdahl, Å., Olli, J. J., Hendriks, H. G. C. J. M., & Koninkx, J. G. J. F. (1991). Effects of soybean-containing diets on the proximal and distal intestine in Atlantic salmon (*Salmo salar*): a morphological study. *Aquaculture*, 94(4), 297–305.
- Vidal, N., Zaldúa, N., D'Anatro, A., & Naya, D. E. (2014). Are the more plastic the more abundant? An assessment of the interplay between physiological flexibility and community structure for a Neotropical fish assemblage. *PLOS ONE*, 9(3), e92446.
- Vigliano, F. A., Muñoz, L., Hernández, D., Cerutti, P., Bermúdez, R., & Quiroga, M. I. (2011). An immunohistochemical study of the gut neuroendocrine system in juvenile pejerrey *Odontesthes bonariensis* (Valenciennes). *Journal of Fish Biology*, 78(3), 901–911.
- Volkoff, H. (2016). The neuroendocrine regulation of food intake in fish: a review of current knowledge. *Frontiers in Neuroscience*, 10, 540.
- Wagner, C. E., McIntyre, P. B., Buels, K. S., Gilbert, D. M., & Michel, E. (2009). Diet predicts intestine length in Lake Tanganyika's cichlid fishes. *Functional Ecology*, 23(6), 1122–1131.
- Wilson, J. M., & Castro, L. F. C. (2010). Morphological diversity of the gastrointestinal tract in fishes. In M. Grosell, A. P. Farrell, & C. J. Brauner (Eds.), *Fish physiology: The multifunctional gut of fish* (pp. 1–55). Academic Press.
- Zihler, F. (1981). Gross morphology and configuration of digestive tracts of Cichlidae (Teleostei, Perciformes): phylogenetic and functional, significance. *Netherlands Journal of Zoology*, 32(4), 544–571.