

Global burden of acute lower respiratory infection associated with human metapneumovirus in children under 5 years in 2018: a systematic review and modelling study



Xin Wang, You Li, Maria Deloria-Knoll, Shabir A Madhi, Cheryl Cohen, Asad Ali*, Sudha Basnet*, Quique Bassat*, W Abdullah Brooks*, Malinee Chittaganpitch*, Marcela Echavarria*, Rodrigo A Fasce*, Doli Goswami*, Siddhivinayak Hirve*, Nusrat Homaira*, Stephen R C Howie*, Karen L Kotloff*, Najwa Khuri-Bulos*, Anand Krishnan*, Marilla G Lucero*, Socorro Lupisan*, Ainara Mira-Iglesias*, David P Moore*, Cinta Moraleda*, Marta Nunes*, Histoshi Oshitani*, Betty E Owor*, Fernando P Polack*, Katherine L O'Brien*, Zeba A Rasmussen*, Barbara A Rath*, Vahid Salimi*, J Anthony G Scott*, Eric A F Simões*, Tor A Strand*, Donald M Thea*, Florette K Treurnicht*, Linda C Vaccari*, Lay-Myint Yoshida*, Heather J Zar*, Harry Campbell, Harish Nair, for the Respiratory Virus Global Epidemiology Network†



Summary

Background Human metapneumovirus is a common virus associated with acute lower respiratory infections (ALRIs) in children. No global burden estimates are available for ALRIs associated with human metapneumovirus in children, and no licensed vaccines or drugs exist for human metapneumovirus infections. We aimed to estimate the age-stratified human metapneumovirus-associated ALRI global incidence, hospital admissions, and mortality burden in children younger than 5 years.

Methods We estimated the global burden of human metapneumovirus-associated ALRIs in children younger than 5 years from a systematic review of 119 studies published between Jan 1, 2001, and Dec 31, 2019, and a further 40 high quality unpublished studies. We assessed risk of bias using a modified Newcastle-Ottawa Scale. We estimated incidence, hospital admission rates, and in-hospital case-fatality ratios (hCFRs) of human metapneumovirus-associated ALRI using a generalised linear mixed model. We applied incidence and hospital admission rates of human metapneumovirus-associated ALRI to population estimates to yield the morbidity burden estimates by age bands and World Bank income levels. We also estimated human metapneumovirus-associated ALRI in-hospital deaths and overall human metapneumovirus-associated ALRI deaths (both in-hospital and non-hospital deaths). Additionally, we estimated human metapneumovirus-attributable ALRI cases, hospital admissions, and deaths by combining human metapneumovirus-associated burden estimates and attributable fractions of human metapneumovirus in laboratory-confirmed human metapneumovirus cases and deaths.

Findings In 2018, among children younger than 5 years globally, there were an estimated 14.2 million human metapneumovirus-associated ALRI cases (uncertainty range [UR] 10.2 million to 20.1 million), 643 000 human metapneumovirus-associated hospital admissions (UR 425 000 to 977 000), 7700 human metapneumovirus-associated in-hospital deaths (2600 to 48 800), and 16 100 overall (hospital and community) human metapneumovirus-associated ALRI deaths (5700 to 88 000). An estimated 11.1 million ALRI cases (UR 8.0 million to 15.7 million), 502 000 ALRI hospital admissions (UR 332 000 to 762 000), and 11 300 ALRI deaths (4000 to 61 600) could be causally attributed to human metapneumovirus in 2018. Around 58% of the hospital admissions were in infants under 12 months, and 64% of in-hospital deaths occurred in infants younger than 6 months, of which 79% occurred in low-income and lower-middle-income countries.

Interpretation Infants younger than 1 year have disproportionately high risks of severe human metapneumovirus infections across all World Bank income regions and all child mortality settings, similar to respiratory syncytial virus and influenza virus. Infants younger than 6 months in low-income and lower-middle-income countries are at greater risk of death from human metapneumovirus-associated ALRI than older children and those in upper-middle-income and high-income countries. Our mortality estimates demonstrate the importance of intervention strategies for infants across all settings, and warrant continued efforts to improve the outcome of human metapneumovirus-associated ALRI among young infants in low-income and lower-middle-income countries.

Funding Bill & Melinda Gates Foundation.

Copyright © 2020 The Author(s). Published by Elsevier Ltd. This is an Open Access article under the CC BY 4.0 license.

Introduction

Acute lower respiratory infections (ALRIs) are one of the leading causes of morbidity and mortality in children

globally, accounting for 10% of deaths in children younger than 5 years in 2017.¹ Human metapneumovirus, first identified in 2001, is an important virus that causes ALRIs

Lancet Glob Health 2021; 9: e33–43

Published Online
November 26, 2020
[https://doi.org/10.1016/S2214-109X\(20\)30393-4](https://doi.org/10.1016/S2214-109X(20)30393-4)

*Authors listed alphabetically

†Members listed in the appendix

Centre for Global Health, Usher Institute, Edinburgh Medical School, University of Edinburgh, Edinburgh, UK (X Wang PhD, Y Li PhD, L C Vaccari MbChB, Prof H Campbell MD, Prof H Nair PhD); Department of International Health, International Vaccine Access Center, Johns Hopkins Bloomberg School of Public Health, Baltimore, MD, USA (M Deloria-Knoll PhD, W A Brooks MD, Prof K L O'Brien MD); Medical Research Council: Respiratory and Meningeal Pathogens Research Unit (Prof S A Madhi PhD, M Nunes PhD, D P Moore PhD), Department of Science and Technology/National Research Foundation: Vaccine Preventable Diseases (Prof S A Madhi, M Nunes), Department of Paediatrics and Child Health, Chris Hani Baragwanath Academic Hospital (D P Moore), and School of Public Health (C Cohen MD, F K Treurnicht PhD), Faculty of Health Sciences, University of the Witwatersrand, Johannesburg, South Africa; Centre for Respiratory Disease and Meningitis, National Institute for Communicable Diseases, Johannesburg, South Africa (C Cohen, F K Treurnicht); Department of Pediatrics and Child Health, Aga Khan University, Karachi, Pakistan (A Ali MD); Department of Child Health, Tribhuvan University,

Kathmandu, Nepal (Prof S Basnet MD); Centre for International Health, University of Bergen, Bergen, Norway (Prof S Basnet, Prof T A Strand PhD); Barcelona Global Health Institute, Hospital Clínic-University of Barcelona, Barcelona, Spain (Prof Q Bassat MD, C Moraleda PhD); Centro de Investigación em Saúde de Manhiça, Maputo, Mozambique (Prof Q Bassat); Institució Catalana de Recerca i Estudis Avançats, Barcelona, Spain (Prof Q Bassat); Pediatric Infectious Diseases Unit, Pediatrics Department, Hospital Sant Joan de Déu (University of Barcelona), Barcelona, Spain (Prof Q Bassat); Consorcio de Investigación Biomédica en Red de Epidemiología y Salud Pública, Madrid, Spain (Prof Q Bassat MD); Medical Sciences Technical Office, Department of Medical Sciences, Ministry of Public Health, Nonthaburi, Thailand (M Chittaganpitch MSc); Clinical Virology Unit, Centro de Educación Médica e Investigaciones Clínicas, Buenos Aires, Argentina (M Echavarría PhD); Public Health Institute of Chile, Santiago, Chile (R A Fasce BSc); International Centre for Diarrhoeal Disease Research Bangladesh, Dhaka, Bangladesh (D Goswami MSc, N Homaira PhD); KEM Hospital Research Centre, Pune, India (S Hirve PhD); Discipline of Paediatrics, School of Women's and Children's Health, The University of New South Wales, Sydney, NSW, Australia (N Homaira); Medical Research Council Unit The Gambia at London School of Hygiene & Tropical Medicine, Banjul, The Gambia (S R C Howie PhD); Department of Paediatrics: Child and Youth Health, University of Auckland, Auckland, New Zealand (S R C Howie); Department of Pediatrics and Department of Medicine, Center for Vaccine Development and Global Health, University of Maryland School of Medicine, Baltimore, MD, USA (Prof K L Kotloff MD); Department of Pediatrics, University of Jordan School of Medicine, Amman, Jordan (Prof N Khuri-Bulos MD); Centre for Community Medicine,

Research in context

Evidence before this study

Human metapneumovirus is a common virus in children with acute lower respiratory infection (ALRI). Two pooled analyses have shown that human metapneumoviruses are identified in 6.1–6.4% of ALRIs in patients younger than 20 years globally. However, no global estimates of human metapneumovirus-associated ALRI burden are available for children younger than 5 years. The estimation of global human metapneumovirus burden is challenging due to the paucity of population-based studies on the incidence of human metapneumovirus infections.

Added value of this study

We did a meta-analysis based on published and unpublished data on laboratory-confirmed human metapneumovirus-associated ALRI incidence, hospital admissions, and mortality burden. We included 159 studies with data on human metapneumovirus-associated ALRI community incidence, hospital admission rates, proportion of human metapneumovirus-positive cases among hospitalised ALRI cases, and in-hospital case-fatality ratios, which included 40 high quality unpublished studies that provided data stratified by narrow age groups in children younger than 5 years. 27% of the studies were from low-income and lower-middle-income countries. Our estimates of human metapneumovirus-associated ALRI burden were stratified by the level of child mortality of the setting and by age groups, from which we identified the population subgroups most susceptible to human metapneumovirus-associated ALRI morbidity and mortality, identifying target populations and settings for future intervention studies and informing intervention strategies. Since the presence of human metapneumovirus in the upper respiratory tract in children with ALRIs does not indicate causation, we reported the global burden of ALRIs that are causally attributable to human metapneumovirus (human metapneumovirus-attributable ALRI burden), which could aid understanding with regard to the involvement of this virus in causing childhood ALRI. We estimated that human

metapneumovirus could be identified in 11% of ALRI cases, 4–13% of hospital admissions due to ALRIs, and 2% of ALRI deaths among children under 5 years globally, using our estimates in conjunction with previously published all-cause ALRI burden estimates. After accounting for the causal attribution of human metapneumovirus, we estimated that 8% of ALRI cases, 3–10% of hospital admissions due to ALRIs, and 1% of ALRI-associated mortality could be attributed to human metapneumovirus. About 58% of these hospital admissions occurred in the first year of life. About 64% of the in-hospital deaths occurred in infants younger than 6 months, including 79% occurring in low-income and lower-middle-income countries.

Implications of all the available evidence

To our knowledge, our systematic review provides the first estimates of global human metapneumovirus-associated ALRIs and human metapneumovirus-attributable ALRI morbidity and mortality in children under 5 years overall and stratified by narrow age bands (0–5 months, 6–11 months, and 12–59 months). Our results indicate that infants younger than 1 year have an increased risk of severe human metapneumovirus-associated ALRIs compared with older children. Infants younger than 6 months, especially those in low-income and lower-middle-income countries, are at greater risk of death from human metapneumovirus-associated ALRIs than older infants and those from upper middle-income countries and high-income countries. These findings warrant continued efforts to develop targeted intervention strategies to protect infants from human metapneumovirus infections, and to improve the outcome of infants with human metapneumovirus-associated ALRIs, especially in low-income and lower-middle income countries. Such strategies could include specific antiviral therapeutics, monoclonal antibodies, or vaccination for children and their mothers during pregnancy.

in young children.^{2–5} Previous evidence indicates that most children are infected with human metapneumovirus by age 5 years, with most severe infections occurring in infants, including symptomatic and asymptomatic infections.^{6–10} Pooled analyses have shown that human metapneumovirus is associated with 6.1–6.4% of hospital admissions due to ALRI among patients younger than 20 years worldwide.^{11,12} Few studies have reported the incidence and mortality for human metapneumovirus-associated ALRIs, and studies have rarely reported disease burden in narrower age groups (eg, those younger than 6 months). No global or regional burden estimates are available for children under 5 years.

A live-attenuated recombinant human metapneumovirus vaccine has been assessed in a phase 1 clinical trial; however, study findings showed that the vaccine

had insufficient immunogenicity in children aged 6–59 months.¹³ Antivirals against human metapneumovirus infections and several other types of vaccines have been investigated, but have not reached clinical trials.^{14–16}

We aimed to estimate the global and regional number of human metapneumovirus-associated ALRI cases, hospital admissions, and mortality by age strata in children under 5 years for 2018, using published and unpublished data on laboratory-confirmed (culture, immunofluorescence assay, or molecular test) human metapneumovirus morbidity and mortality. Since the presence of human metapneumovirus in the upper respiratory tract in children does not indicate that ALRI symptoms were directly caused by these viruses, we also estimated the global burden of ALRI that is attributable to human metapneumovirus by accounting

for the causal attribution of human metapneumovirus. The estimates would provide evidence for the further development of targeted interventions and treatment.

Methods

Systematic review

We did a systematic review of the human metapneumovirus-associated ALRI disease burden in children under 5 years (appendix pp 4–5). We searched MEDLINE (Ovid), Embase (Ovid), Global Health 1973 onwards (Ovid), CINAHL, Web of Science, Global Health Library, and three Chinese databases (CNKI, Wanfang, and Chongqing VIP) for studies published between Jan 1, 2001, and Dec 31, 2019. To search the grey literature, we did broad searches through Google using the same date restrictions and the search terms “acute respiratory infections” AND “child” AND “parainfluenza virus”. No language or publication restrictions were applied. Three authors (XW, LCV, and YL) screened the titles and abstracts for eligibility and extracted data independently. Disagreements were resolved by discussion between the authors.

We included studies that reported any of the following data in children younger than 5 years: community incidence rates of ALRIs (ie, clinical pneumonia according to 2005 WHO Integrated Management of Childhood Illnesses²⁷) with laboratory-confirmed human metapneumovirus; rates of hospital admissions for ALRIs (ie, physician-confirmed diagnosis of ALRI) or ALRIs with hypoxaemia confirmed by pulse oximetry both with laboratory-confirmed human metapneumovirus (per 1000 children per year); proportion of ALRIs with laboratory-confirmed human metapneumovirus cases among hospitalised ALRI cases; or in-hospital case-fatality ratios (hCFRs) of ALRIs with laboratory-confirmed human metapneumovirus. Case definitions are included in the appendix (pp 2–3).¹⁸

Studies had to use clear case definitions for specimen collection and testing, and studies that reported incidence and hospital admission rate data had to include data for at least one complete calendar year (or at least one full season if in a temperate region). We included hCFR data for any length of study period. We included data on the proportion of human metapneumovirus-positive cases among hospitalised ALRI cases if reported for at least one full calendar year.

We excluded studies: without a clear denominator population at risk (limited to those reporting incidence and hospital admission rate data); those in which human metapneumovirus was not the primary outcome; those reporting modelled burden estimates; those in which human metapneumovirus infections were diagnosed on the basis of serology alone; and those only including population subgroups with high-risk conditions.

We supplemented data from published studies with high quality unpublished data (from ongoing studies or re-analysis of previously published studies) using agreed

standardised approaches and definitions within the collaborative Respiratory Virus Global Epidemiology Network.¹⁹

Assessment of risk of biases

We used a modified Newcastle-Ottawa Scale to assess the risk of bias in seven domains, including study design, adjustment for health utilisation, patient groups excluded, definition, sampling strategy, diagnostic testing, and hypoxaemia ascertainment (appendix pp 25–26).^{18,20}

Statistical analysis

Our burden estimation approaches, including main analyses and sensitivity analyses, are summarised in the appendix (p 14). We estimated the number of human metapneumovirus-associated ALRI cases, hospital admissions, and in-hospital deaths using a similar strategy to our previous analysis.¹⁸ For the incidence rate and hospital admission rate, we scaled the population-at-risk for the level of testing per study where available before meta-analyses (appendix p 23). In a meta-analysis, we estimated incidence rates, hospital admission rates, and hCFRs of human metapneumovirus-associated ALRI using a generalised linear mixed model.²¹

After meta-analyses, we estimated number of cases and number of hospital admissions using Monte Carlo simulation, which enabled the combination of meta-estimates and population estimates (UN 2018 population estimates).²² The median value of 10 000 samples simulated from a log-normal distribution was used as the point burden estimate and the 2.5th and 97.5th percentiles as the 95% uncertainty ranges (URs). We used the same strategy as our previous studies, for consistency; alternative methods (such as resampling observed data) are likely to yield comparable estimates.²³ In the main analysis, we reported estimates stratified by three non-overlapping age groups (0–5 months, 6–11 months, and 12–59 months) and by child mortality level of the setting from 2018 data (stratified into low or high; using the median under-5 mortality rate [16.6 per 1000 livebirths] as the cutoff point) for each outcome where available.²⁴ Global results were calculated as the sum of age-specific and region-specific estimates. The numbers of cases were rounded to the nearest thousand, and deaths were rounded to the nearest hundred. In the community setting, we reported the incidence rate for the overall age group (0–59 months) because data were insufficient to allow disaggregation by narrower age bands. To incorporate information from studies with data for other age bands (eg, 0–11 months), we imputed the numbers of cases for 0–59 months using a multiple imputation approach as previously described (appendix pp 21–22).¹⁸

We estimated human metapneumovirus-associated ALRI in-hospital deaths by combining the estimates of hospital admissions and hCFRs of human metapneumovirus-associated ALRIs.^{18,19} Similar to morbidity

All India Institute of Medical Sciences, New Delhi, India (Prof A Krishnan MD); Research Institute for Tropical Medicine, Muntinlupa, Philippines (M G Lucero MD, S Lupisan MD); Área de Investigación en Vacunas, Fundación para el Fomento de la Investigación Sanitaria y Biomédica de la Comunitat Valenciana (Salud Pública), Valencia, Spain (A Mira-Iglesias MSc); Infectious Pediatric Diseases Section, Hospital Universitario de Octubre, Universidad Complutense, Research Institute Hospital de Octubre, Madrid, Spain (C Moraleda); Department of Virology, Tohoku University Graduate School of Medicine, Sendai, Japan (Prof H Oshitani MD); KEMRI-Wellcome Trust Research Programme, Kilifi, Kenya (B E Owor PhD, Prof J A G Scott FRCP); Fundacion INFANT, Buenos Aires, Argentina (Prof F P Polack MD); Fogarty International Center, National Institutes of Health, Bethesda, MD, USA (Z A Rasmussen MD); Vienna Vaccine Safety Initiative, Berlin, Germany (Prof B A Rath MD); Department of Virology, School of Public Health, Tehran University of Medical Sciences, Tehran, Iran (V Salimi PhD); Nuffield Department of Tropical Medicine, Oxford University, Oxford, UK (Prof J A G Scott); Department of Infectious Disease Epidemiology, London School of Hygiene & Tropical Medicine, London, UK (Prof J A G Scott); Department of Pediatrics, School of Medicine, and Department of Epidemiology and Center for Global Health, Colorado School of Public Health, University of Colorado, Aurora, CO, USA (Prof Eric A F Simões MD); Innland Hospital Trust, Lillehammer, Norway (Prof T A Strand); Department of Global Health and Development, Boston University School of Public Health, Boston, MA, USA (Prof D M Thea MD); Department of Pediatric Infectious Diseases, Institute of Tropical Medicine, Nagasaki University, Nagasaki, Japan (Prof L-M Yoshida PhD); and Department of Paediatrics and Child Health and Medical Research Council Unit on Child and Adolescent Health,

University of Cape Town,
Cape Town, South Africa
(Prof H J Zar PhD)

Correspondence to:
Prof Harish Nair, Centre for
Global Health, Usher Institute,
Edinburgh Medical School,
University of Edinburgh,
Edinburgh EH8 9AG, UK
harish.nair@ed.ac.uk

See Online for appendix

estimation, global estimates of mortality were calculated as the sum of the estimates, stratified by the three age groups and by child mortality settings.

Many child deaths from ALRIs occur outside of hospitals, especially in resource-limited settings due to low care-seeking or restricted access to care. Thus, we estimated an inflation factor ratio of overall ALRI deaths to in-hospital ALRI deaths at eight sites in six countries with high child mortality (Mozambique, Kenya, South Africa, Burkina Faso, and Ghana in sub-Saharan Africa, and Bangladesh in south Asia).^{18,25–27} We calculated the median inflation factor, which was extrapolated to other countries with high child mortality, and we applied this inflation factor to estimates of in-hospital deaths to yield overall human metapneumovirus-associated ALRI mortality (appendix p15).^{18,19,28} We assumed that human metapneumovirus prevalence was the same in ALRI

community deaths and in-hospital deaths. For settings with low child mortality, the reciprocal of the proportion of children with pneumonia symptoms who received care, measured in Multiple Indicator Cluster Surveys, Demographic and Health Surveys, and other national surveys, was used as a proxy for the inflation factor.²⁹ The inflation factor can be calculated for many countries and regions, and it can thus help improve the estimates of overall human metapneumovirus-associated ALRI mortality. The median inflation factor for low child mortality settings was extrapolated to other countries with low child mortality without available data. Compared with approximating the inflation factor using non-specific ALRI mortality, in this approach we additionally assumed that the case-fatality ratios for pneumonia in hospitalised and non-hospitalised cases were broadly similar.

The presence of human metapneumovirus in the upper respiratory tract of a child with ALRI does not indicate that human metapneumovirus caused the ALRI symptoms in every instance. Thus, we estimated the ALRI burden that is causally attributable to human metapneumovirus (ie, human metapneumovirus-attributable ALRI burden) by combining the human metapneumovirus-associated ALRI burden estimates and the proportion of laboratory-confirmed human metapneumovirus ALRI cases or deaths that are attributable to human metapneumovirus (the attributable fraction of human metapneumovirus in human metapneumovirus-associated ALRI cases or deaths). We used a median value of 78% as the input for the attributable fraction of human metapneumovirus-associated ALRI cases based on three multicountry studies.^{3–5} The attributable fraction of human metapneumovirus-associated ALRI deaths was calculated using the attributable fraction of human metapneumovirus-associated ALRI cases and the ratio between hCFRs of human metapneumovirus-positive ALRIs and human metapneumovirus-negative ALRIs. We assumed that hCFR of human metapneumovirus-negative ALRIs was equal to the hCFR of human metapneumovirus-positive ALRIs that were not deemed attributable to human metapneumovirus (appendix p 17).

We did sensitivity analyses for human metapneumovirus-associated ALRI morbidity and in-hospital deaths (appendix pp 9–13), and estimated burden by country development status, according to UNICEF definitions and World Bank income levels (low-income and lower-middle-income, upper-middle-income, and high-income).^{30,31} Additionally, we estimated the range of human metapneumovirus-associated ALRI hospital admissions by combining the proportion of hospitalised ALRI cases positive for human metapneumovirus and the 2015–16 estimates of all-cause ALRI hospital admissions among children younger than 5 years.^{32,33} We also estimated overall human metapneumovirus-associated ALRI deaths for settings with high child mortality by applying the proportion of human

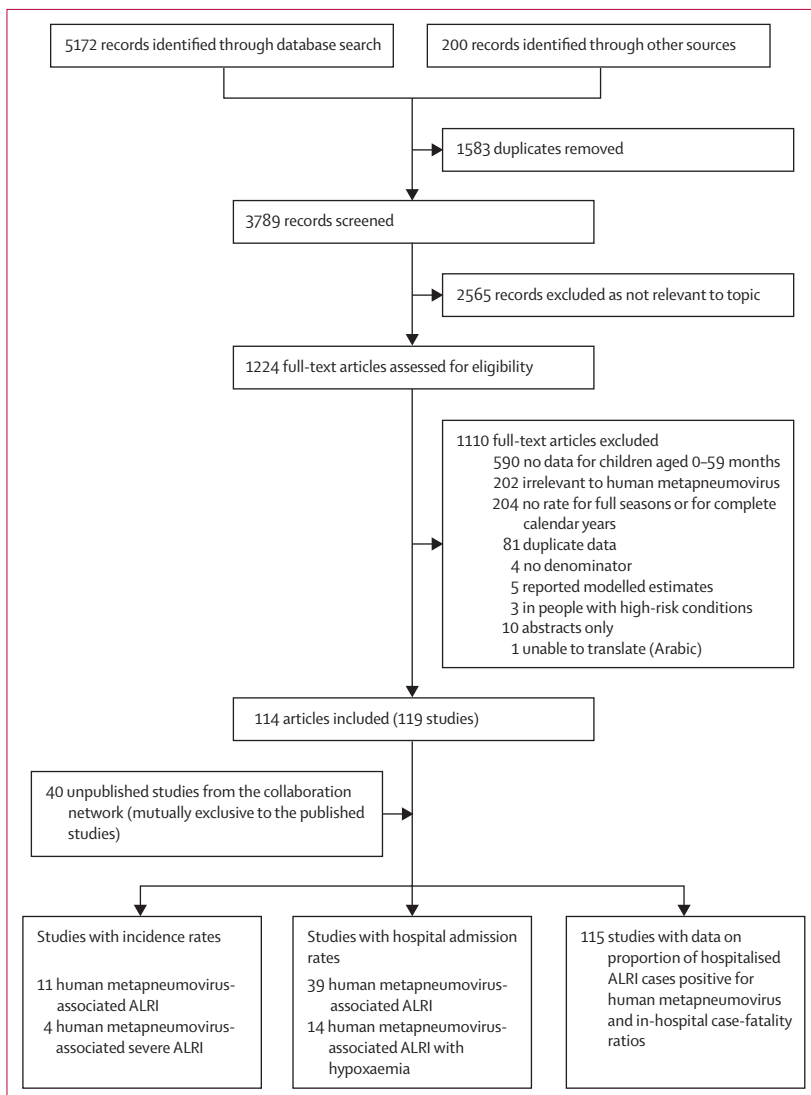


Figure: Flow diagram for selection of studies on human metapneumovirus-associated ALRIs
ALRIs=acute lower respiratory infections.

metapneumovirus-positive deaths among all ALRI deaths to the number of ALRI deaths in children under 5 years for 2017.¹ The proportion of human metapneumovirus-positive deaths among all ALRI deaths was estimated using data from hospital-based studies included in the systematic review.

As a final sensitivity analysis, we estimated human metapneumovirus-attributable mortality for settings with high child mortality by applying the proportion of human metapneumovirus-attributable ALRI deaths to the number of ALRI deaths in children under 5 years from 2017.¹ The proportion of human metapneumovirus-attributable ALRI deaths was estimated using data for December, 2016, to October, 2019, obtained from Child Health and Mortality Prevention Surveillance (appendix p 18).³⁴ Details of included studies are in the appendix (pp 34–53, 60–67). All analyses were done in R (version 3.5.2).³⁵ This study was done in accordance with the Guidelines for Accurate and Transparent Health Estimates Reporting recommendations (appendix p 59).³⁶

Role of the funding source

The funder of the study had no role in study design, data collection, data analysis, data interpretation, or writing of the report. XW and HN had full access to all the data in the study and HN had final responsibility for the decision to submit for publication.

Results

We identified 159 studies with data on human metapneumovirus-associated ALRI community incidence, hospital admission rates, the proportion of human metapneumovirus-positive cases among hospitalised ALRI cases, and hCFRs (figure); 119 studies were published and 40 were unpublished studies from the Respiratory Virus Global Epidemiology Network. Of the 159 studies included, seven (4%) were from low-income countries, 36 (23%) from lower-middle-income countries, 67 (42%) from upper-middle-income countries, and 49 (31%) from high-income countries. The characteristics of the included studies are summarised in the appendix (pp 6–7, 34–53).

11 studies reported the incidence of human metapneumovirus-associated ALRIs (ie, ALRI cases with laboratory confirmation of human metapneumovirus). Ten studies provided data for the 0–59-month age group after imputation, including six studies from settings with high child mortality; five studies were from lower-middle-income countries, two studies from upper-middle-income countries, and three studies from high-income countries (table 1). Four studies reported incidence before 2010. Between 1990 and 2015, the mean human metapneumovirus-associated ALRI incidence meta-estimate was 22·1 per 1000 children per year (95% CI 17·0–28·7) in children aged 0–59 months in settings with high child mortality, and 18·9 (11·2–31·9) in settings with low child mortality. The high incidence

For more on **Child Health and Mortality Prevention Surveillance** see <https://champshealth.org/>

	LMICs	UMICs	HICs	Settings with low child mortality	Settings with high child mortality
0–5 months					
Studies, n	5	1	0	0	6
Incidence (per 1000 children per year)*	30·2 (7·8–109·8)	NA	NA	NA	35·4 (12·0–99·3)
Episodes (thousands)	1337 (359–4983)	NA	NA	NA	1629 (570–4662)
6–11 months					
Studies, n	5	1	0	0	6
Incidence (per 1000 children per year)*	30·7 (12·2–75·1)	NA	NA	NA	32·8 (16·0–65·9)
Episodes (thousands)	1347 (546–3327)	NA	NA	NA	1496 (740–3026)
12–59 months					
Studies, n	4	1	0	0	5
Incidence (per 1000 children per year)*	23·1 (16·7–31·9)	NA	NA	NA	21·0 (15·4–28·6)
Episodes (thousands)	7923 (5743–10 933)	NA	NA	NA	7490 (5506–10 192)
0–59 months†					
Studies, n‡	5 (1)	2 (1)	3 (2)	4 (3)	6 (1)
Incidence (per 1000 children per year)*	21·3 (15·5–29·3)	16·5 (8·3–32·8)	22·6 (13·4–38·2)	18·9 (11·2–31·9)	22·1 (17·0–28·7)
Episodes (thousands)	9202 (6711–12 620)	3019 (1521–5996)	1436 (854–2415)	4347 (2588–7304)§	9891 (7620–12 842)§

Data in parentheses are estimated uncertainty ranges. Data were imputed using a multiple imputation approach. Meta-analyses were only done when two or more studies were available. Settings in which the under-5 mortality rate was higher than the median under-5 mortality rate for 2018, were considered high child mortality settings, and settings in which the under-5 mortality rate was lower than the median under-5 mortality rate for 2018, were considered low child mortality settings. LMICs=lower-middle income countries. UMICs=upper middle-income countries. HICs=high-income countries. NA=not available. *Derived from meta-analysis. †Estimates were calculated by applying rates for children aged 0–59 months to the population estimates. ‡Data in parentheses are the number of imputed studies. §Global number of human metapneumovirus-associated acute lower respiratory infections cases in children aged 0–59 months was 14·2 million (uncertainty range 10·2 million to 20·1 million), which was calculated by adding estimates from the two child mortality setting groups.

Table 1: Estimates of the incidence (per 1000 children per year) and number of human metapneumovirus-associated acute lower respiratory infection cases in children younger than 5 years in the community in 2018, by age group, and by World Bank income level and level of child mortality by setting (low vs high)

	LMICs	UMICs	HICs	Settings with low child mortality	Settings with high child mortality	Global estimates*
Human metapneumovirus-associated ALRIs						
0–5 months						
Studies, n	8	6	5	7	12	..
Hospital admission rate (per 1000 children per year)†	2.4 (1.6–3.5)	3.3 (1.6–7.1)	3.3 (2.2–5.1)	2.7 (1.8–4)	3.0 (1.9–4.9)	..
Hospital admissions (thousands)	106 (72–157)	61 (29–128)	21 (14–32)	62 (42–93)	138 (86–221)	200 (128–314)
6–11 months						
Studies, n	7	5	4	5	11	..
Hospital admission rate (per 1000 children per year)†	2.7 (1.7–4.3)	2.5 (1.5–9)	2.8 (2.2–3.5)	2.2 (1.5–3.4)	2.7 (1.7–4.4)	..
Hospital admissions (thousands)	119 (75–188)	46 (19–111)	18 (14–22)	51 (34–76)	123 (77–198)	174 (110–274)
12–59 months						
Studies, n	9	8	5	7	15	..
Hospital admission rate (per 1000 children per year)†	0.6 (0.3–1)	0.4 (0.2–0.8)	0.3 (0.2–0.7)	0.3 (0.2–0.5)	0.6 (0.4–0.8)	..
Hospital admissions (thousands)	206 (113–375)	59 (29–117)	15 (8–28)	55 (35–87)	214 (152–302)	269 (187–389)
0–59 months‡						
Hospital admissions (thousands)	431 (260–720)	165 (77–356)	54 (36–83)	168 (110–255)	475 (315–721)	643 (425–977)
Human metapneumovirus-associated ALRIs with hypoxaemia						
0–5 months						
Studies, n	6	3	1	2	8	..
Hospital admission rate (per 1000 children per year)†	0.3 (0.2–1)	1.3 (0.3–5.4)	NA	0.6 (0.2–1.5)	0.7 (0.2–2.5)	..
Hospital admissions (thousands)	13 (1–268)	24 (6–101)	NA	14 (5–38)	32 (9–113)	46 (14–151)
6–11 months						
Studies, n	6	3	1	2	8	..
Hospital admission rate (per 1000 children per year)†	0.4 (0.1–2)	0.3 (0.1–1.2)	NA	0.3 (0.1–1.7)	0.5 (0.2–1.7)	..
Hospital admissions (thousands)	18 (4–78)	6 (2–19)	NA	7 (2–28)	23 (8–66)	30 (10–94)
12–59 months						
Studies, n	6	4	1	3	8	..
Hospital admission rate (per 1000 children per year)†	0.1 (0–0.2)	0.1 (0–0.7)	NA	0 (0–0.1)	0.1 (0–0.3)	..
Hospital admissions (thousands)	34 (5–215)	15 (1–171)	NA	1 (0–4)	36 (5–273)	37 (5–277)
0–59 months‡						
Hospital admissions (thousands)	65 (10–560)	44 (9–291)	NA	22 (7–70)	91 (22–452)	112 (29–522)
Data in parentheses are estimated uncertainty ranges. Meta-analyses were only done when at least two studies were available. Settings in which the under-5 mortality rate was higher than the median under-5 mortality rate for 2018, were considered high child mortality settings, and settings in which the under-5 mortality rate was lower than the median under-5 mortality rate for 2018, were considered low child mortality settings. ALRI=acute lower respiratory tract infection. LMICs=lower-middle-income countries. UMICs=upper-middle-income countries. HICs=high-income countries. NA=not available. *Global estimates by age strata are the sum of estimates by child mortality settings; global estimates for 0–59 months are the sum of estimates by age groups and child mortality settings. †Derived from the meta-analysis. ‡Estimates are the sum of estimates for all three age groups (0–5 months, 6–11 months, and 12–59 months).						
Table 2: Hospital admission rates (per 1000 children per year) and hospital admissions of human metapneumovirus-associated ALRI in children younger than 5 years in 2018, by age group and by World Bank income levels and level of child mortality by setting (low vs high)						

observed in settings with low child mortality was mainly driven by two Australian studies (done between 1996 and 1999 and between 2010 and 2014).^{37,38} Using these meta-estimates, we estimated that there were 14.2 million human metapneumovirus-associated ALRI cases (UR 10.2 million to 20.1 million) globally in children younger than 5 years.

We identified 39 studies reporting human metapneumovirus-associated ALRI hospital admission rates,

including 29 studies reporting data by three narrow age groups (0–5 months, 6–11 months, or 12–59 months; table 2). The hospital admission rate meta-estimate was more than four times higher in infants aged 0–5 months and 6–11 months (2.2–3.3 admissions per 1000 children per year) than children aged 12–59 months (0.3–0.6 admissions per 1000 children per year) when stratified by World Bank income levels and child mortality settings. In the analysis stratified by child mortality settings,

	LMICs	UMICs	HICs	Settings with low child mortality	Settings with high child mortality	Global estimates*
Studies, n	15	6	7	7	21	..
0–5 months						
hCFR, %†	4.5% (2.3–8.6)	1.7% (0.6–5.1)	0.4% (0–8.6)	0.4% (0–8.6)	3.3% (1.7–6.1)	..
Deaths, n	4300 (2000–9200)	1000 (300–3700)	100 (0–3400)	200 (0–9900)	4600 (2100–9900)	4900 (2100–19300)
6–11 months						
hCFR, %†	0.7% (0–9)	NA	0.6% (0.1–3.9)	0.6% (0.1–3.9)	0.2% (0–7.6)	..
Deaths, n	900 (0–37800)	NA‡	100 (0–700)	300 (0–1900)	200 (0–9400)	600 (100–11300)
12–59 months						
hCFR, %†	0.9% (0.3–2.8)	1.1% (0.1–9.1)	0.5% (0–7.0)	0.5% (0–7)	0.9% (0.2–3.6)	..
Deaths, n	1800 (500–6500)	600 (100–6600)	100 (0–2800)	300 (0–10100)	1900 (400–8300)	2200 (400–18300)
0–59 months§						
Deaths, n	7200 (2600–52300)	1700 (300–10300)	300 (0–6900)	800 (100–22200)	6800 (2500–27100)	7700 (2600–48800)

Data in parentheses are estimated uncertainty ranges. Settings in which the under-5 mortality rate was higher than the median under-5 mortality rate for 2018, were considered high child mortality settings, and settings in which the under-5 mortality rate was lower than the median under-5 mortality rate for 2018, were considered low child mortality settings. hCFR=in-hospital case-fatality ratio. ALRI=acute lower respiratory tract infection. LMICs=lower-middle-income countries. UMICs=upper middle-income countries. HICs=high-income countries. NA=not available. *Global estimates by age strata are the sum of estimates by child mortality settings; global estimates for children aged 0–59 months are the sum of estimates by age and child mortality settings. †Estimates derived from the meta-analysis. ‡No human metapneumovirus-associated ALRI deaths were reported in any of the studies from upper middle-income countries; thus hCFR for the strata was not estimated. §Estimates for the 0–59 month age group are the sum of estimates for the three age groups (0–5 months, 6–11 months, and 12–59 months).

Table 3: hCFR meta-estimates of human metapneumovirus-associated ALRI and in-hospital deaths in children younger than 5 years in 2018, by age group and by World Bank income levels and level of child mortality by setting (low vs high)

we estimated that there were 643 000 human metapneumovirus-associated ALRI hospital admissions (UR 425 000–977 000) globally in children younger than 5 years in 2018, of which 374 000 (58%) occurred in infants.

14 studies included hospital admission rates for human metapneumovirus-associated ALRIs with hypoxaemia by three age groups, including five studies from settings with low child mortality (table 2). In the analysis stratified by child mortality settings, we estimated that, globally, 112 000 (UR 29 000–522 000) hospital admissions were for human metapneumovirus-associated ALRIs with hypoxaemia in children aged 0–59 months in 2018, accounting for 17% (ie, 112 000 of 643 000 cases) of the human metapneumovirus-associated ALRI hospital admissions.

73 studies reported hCFRs for human metapneumovirus-associated ALRI in children younger than 5 years, including 28 studies with data stratified by three narrow age bands (table 3). hCFRs were highest in infants aged 0–5 months from settings with high child mortality (3.3%, 95% CI 1.7–6.1) and from lower-middle-income countries (4.5%, 2.3–8.6). hCFRs were lower in children from high-income countries who were aged 6–11 months (0.6%, 0.1–3.9) and 12–59 months (0.5%, 0–7.0) than infants aged 0–5 months from high child mortality settings and from lower-middle-income countries, with the estimates in older children having notably wide confidence intervals. On the basis of these meta-estimates, we estimated that there were 7700 human metapneumovirus-associated ALRI in-hospital deaths (UR 2600–48800) in children younger than 5 years in 2018, of which 5500 (71%) occurred in infants. About

64% of these deaths were in young infants aged 0–5 months (4900 deaths of 7700 total in-hospital deaths), and 88% (6800 deaths of 7700 total in-hospital deaths) occurred in countries with high child mortality.

Across 28 countries or regions with low child mortality, 22–94% of children with pneumonia received care from a health provider (appendix p 16). About 71% of the data were for the period 2010–14. On the basis of these data, we estimated the median inflation factor was 1.3 across regions or countries, and thus that there were about 1100 human metapneumovirus-associated ALRI deaths (UR 100–28800; after rounding in-hospital deaths), in hospitals and in the community, among children younger than 5 years in settings with low child mortality in 2018. Of the eight sites with data on pneumonia mortality in high child mortality settings, five sites were in rural areas, and six sites were in African countries. Six studies reported data between 2010 and 2016, and the remaining two studies reported data from 2008 onwards. The inflation factor ranged from 1.5 to 3.5 across the eight sites, with a median value of 2.2 (IQR 1.7–2.7). Thus, we estimated that there were 14900 human metapneumovirus-associated ALRI deaths (UR 5600–59700; after rounding in-hospital deaths), in hospitals and in the community, in settings with high child mortality. We therefore estimate that there were 16100 human metapneumovirus-associated ALRI deaths (5700–88000; ie, ALRI deaths in children with laboratory-confirmed human metapneumovirus) among children globally in 2018.

By applying the attributable fraction of human metapneumovirus to the estimated human metapneumovirus-associated burden, we estimated that 11.1 million ALRI

	Attributable fraction, %*	Global human metapneumovirus-associated burden estimates	Global human metapneumovirus-attributable burden estimates†
Human metapneumovirus-attributable ALRI cases (millions)	78%‡	14·2 (10·2–20·1)	11·1 (8·0–15·7)
Human metapneumovirus-attributable ALRI hospital admissions (thousands)	78%	643 (425–977)	502 (332–762)
Human metapneumovirus-attributable ALRI deaths	70%§	16 100 (5700–88 000)	11 300 (UR 4000–61 600)

Data in parentheses are uncertainty ranges. ALRI=acute lower respiratory tract infection. *The proportion of human metapneumovirus-positive cases and deaths attributable to human metapneumovirus. †Applying the corresponding attributable fraction to the estimates of human metapneumovirus-associated burden. ‡The attributable fraction for human metapneumovirus-associated ALRI cases was calculated using odds ratios from a systematic review and two multi-country studies; the median odds ratio from the three studies was input to yield the attributable fraction for human metapneumovirus-ALRI cases (78%); all references are in the appendix (p 18). §The attributable fraction for human metapneumovirus-associated ALRI deaths was modelled using the attributable fraction for human metapneumovirus cases and the ratio of case-fatality between human metapneumovirus-attributable cases and human metapneumovirus-associated cases (appendix pp 17–18).

Table 4: Estimates of global human metapneumovirus-attributable ALRI cases, hospital admissions, and mortality, projected using attributable fractions that were calculated by use of inflation factors

cases (UR 8·0 million to 15·7 million) and 502 000 ALRI hospital admissions (UR 332 000–762 000) could be attributed to human metapneumovirus in children under 5 years (table 4). We estimated that the ratio of in-hospital case fatalities of human metapneumovirus-attributable ALRIs to human metapneumovirus-associated cases was 0·9 (appendix p 18), and the attributable fraction for human metapneumovirus-associated ALRI deaths was 70% (appendix pp 17–18), indicating that 11 300 ALRI deaths (UR 4000–61 600) globally could be attributed to human metapneumovirus in 2018, including 10 400 deaths (3900–41 800) in settings with high child mortality (table 4).

We did several sensitivity analyses to estimate hospital admissions, in-hospital deaths, and overall human metapneumovirus-associated ALRI deaths, and of human metapneumovirus-attributable ALRI deaths (by country development strata and World Bank income level) using different approaches (appendix pp 8–13, 16, 19). For global human metapneumovirus-associated ALRI hospital admissions, the estimates in children younger than 5 years ranged from 626 000 to 650 000 in analyses by different stratification groups (appendix p 9); the proportion-based approach yielded a broader range (282 000–902 000; appendix p 10). The point estimate of global in-hospital deaths ranged from 7200 to 9100 in children younger than 5 years, and an estimated 79% of the global in-hospital deaths occurred in low-income and lower-middle-income countries (7200 of 9100 deaths) when stratified by World Bank income level (appendix p 11). We estimated 19 900 human metapneumovirus-associated ALRI deaths (UR 12 100–33 200) and 9900 human metapneumovirus-attributable ALRI deaths (UR 2600–39 300) in children aged 1–59 months in settings with high child mortality using a different approach (appendix pp 16, 19).

Discussion

To our knowledge, this is the first study to report global human metapneumovirus-associated ALRI burden estimates both among children younger than 5 years overall and stratified by narrow age groups (0–5 months, 6–11 months, and 12–59 months). When compared with

our previously published all-cause ALRI burden estimates, human metapneumovirus is identified in 11% of ALRI cases, 4–13% of ALRI hospital admissions, and 2% of ALRI deaths among children under 5 years globally.^{1,32,33} About 8% of ALRI cases, 3–10% of ALRI hospital admissions, and 1% of ALRI mortality can be attributed to human metapneumovirus. The wide URs of these burden estimates reflect differences across studies, arising from variation in human metapneumovirus epidemiology between populations and methodological differences, and from paucity of data, especially mortality data.

Similar to respiratory syncytial virus and influenza, we found that the human metapneumovirus-associated ALRI hospital admission rate was much higher in infants than older children, with about 58% of hospital admissions and 71% of in-hospital deaths due to human metapneumovirus-associated ALRIs in children under 5 years occurring in the first year of life.^{18,19} The high burden in infants could be due to the immaturity of infants' immune systems and decaying maternal antibodies during the first several months of life.^{39,40} The consistently high human metapneumovirus-associated ALRI hospital admission rate among infants across different settings highlights the importance of developing safe and effective maternal human metapneumovirus vaccines, particularly for infants.

Our hCFR estimates show that young infants aged 0–5 months are at an increased risk of human metapneumovirus-associated ALRI mortality compared with infants older than 5 months. hCFR estimates for infants aged 0–5 months varied substantially across settings, possibly reflecting the differences in disease severity at admission and in the quality of hospital care. Increased disease severity at presentation could be associated with the high prevalence of certain underlying conditions and delays in care-seeking.^{3,33} The case-fatality ratio (overall and in-hospital) and overall mortality due to ALRI among children under 5 years has substantially reduced in the past 15 years due to socioeconomic development, reduced prevalence of pneumonia risk

factors, and increased use of interventions.^{33,41} However, most studies spanning several years reported one to three deaths from human metapneumovirus-associated ALRIs, and we were unable to identify any changes in the hCFR of human metapneumovirus-associated ALRI over time. When stratifying the data using 2010 as a cutoff and using available age-stratified data from studies done before 2010 (eligible if part of a study was done before 2010 and data could not be stratified by year), we estimated that there were 9600 human metapneumovirus-associated ALRI in-hospital deaths (UR 2300–51200) among children under 5 years in 2010 (appendix p 12).

For settings with high child mortality, the inflation factor was based on scarce data.¹⁹ The estimates could be biased due to limited generalisability and location-specific characteristics (ie, prevalence of human metapneumovirus in childhood ALRI deaths). However, our reported estimates of overall human metapneumovirus-associated ALRI deaths for settings with high child mortality are conservative and could increase by approximately 30% (19900 deaths) using an alternative estimation approach (appendix p 16). For settings with low child mortality, the inflation factor and overall mortality estimate are likely to be underestimated because the definition of care-seeking is broader than the definition of in-hospital care: contact with primary care is included as care-seeking in surveys, but not included in the in-hospital mortality estimates in the present analysis. The US vital statistics data showed that about 40% of under-5 ALRI deaths (International Classification of Diseases, 10th revision diagnostic codes J09–22; U04) occurred in outpatient or emergency departments between 2010 and 2017.⁴² Additionally, this analysis was based on one further assumption that no differences exist between the case-fatality ratio for hospitalised and non-hospitalised pneumonia cases. The direction of bias associated with this assumption could be complicated by the two-way association between disease severity and care-seeking; children with more severe symptoms are more likely to receive hospital care; whereas, supportive care in hospitals can reduce the risk of death, and lack of appropriate care or delays in care can lead to rapid deterioration.^{43–45} Moreover, data on pneumonia care-seeking in high-income countries were not available in published reports; extrapolation from other countries with low child mortality to high-income countries might result in bias. The estimates of inflation factor could also be affected by accuracy of assessment and completeness of documentation for ALRI or pneumonia. For example, the diagnosis of (presumptive) pneumonia in the UNICEF dataset is based on caregivers' report, thus might be inaccurate and affect the estimates of inflation factor.

Our study had several other limitations. Little data were available for Europe and Latin America, which could have affected the generalisation of the estimates. Moreover, heterogeneity in the methodology (ie, variations in precise case definitions, proportion of eligible ALRI cases tested for human metapneumovirus) existed across studies for

each outcome and is likely to have biased our estimates (appendix p 7). We adjusted for levels of testing when estimating hospital admission rates by assuming that the proportion of tested patients with ALRIs who were positive for human metapneumovirus was the same as the proportion in untested patients with ALRIs. However, we did not adjust for the underdetection of human metapneumovirus when estimating hCFRs. The hCFR of human metapneumovirus-associated ALRIs and in-hospital mortality might be underestimated, as suggested by the higher hCFR in patients tested than untested patients (appendix p 24). The incidence and hospital admission rates of human metapneumovirus-associated ALRI are unlikely to be affected by the accuracy of test methods since 92% of the studies used PCR to detect human metapneumovirus. In addition to potential biases, we summed yearly data to ensure precision in the age-stratified analysis; however, we did not account for variation across years (appendix p 20).

Our results show that infants younger than 1 year have disproportionately high risks of severe human metapneumovirus infections across settings. Infants aged 0–5 months in low-income and lower-middle-income countries have an increased risk of mortality from human metapneumovirus-associated ALRIs compared with those in upper-middle-income countries and high-income countries, accounting for nearly eight of every ten global deaths occurring in this age group. These estimates highlight the importance of interventions for infants. In low-income and lower-middle-income countries, continued efforts are needed to reduce human metapneumovirus-associated ALRI mortality among young children, especially infants, in hospitals and communities through improving access to care and case management in hospitals. Considering the paucity of data at the regional level, these estimates should be viewed as preliminary estimates. In the future, additional high quality data on childhood human metapneumovirus-associated ALRI cases, hospital admissions, and mortality, especially age-stratified data, would help refine the estimates and track changes in human metapneumovirus-associated ALRI morbidity and mortality over time.

Contributors

HN and HC conceptualised the study. XW led the literature review. LCV and YL independently screened literature and extracted data. XW led the data analysis with contributions from YL and MD-K. XW, HN, HC, MD-K, SAM, and CC led the data interpretation. XW wrote the first draft of the manuscript with input from HN, HC, MD-K, SAM, and CC. All named members of the Respiratory Virus Global Epidemiology Network contributed to development of the analysis plan, collection and analysis of primary data, data interpretation, and critically reviewed the revised initial draft of the manuscript. All authors read and approved the final draft.

Declaration of interests

MD-K reports grants and personal fees from Merck, and grants from Pfizer, outside the submitted work. SAM reports grants and personal fees from the Bill & Melinda Gates Foundation; and grants from GlaxoSmithKline, Pfizer, and Minervax outside the submitted work. CC reports grants from the US Centers for Disease Control and Prevention during the conduct of the study; travel expenses from

Parexel; and grants from Sanofi Pasteur, the Program for Appropriate Technology in Health, and Wellcome Trust, outside the submitted work. KLO reports grants from the Bill & Melinda Gates Foundation during the conduct of the study. AGS reports grants from the Bill & Melinda Gates Foundation during the conduct of the study. FKT reports grants from the US Centers for Disease Control and Prevention during the conduct of the study. FPP reports grants and personal fees from Janssen and Novavax; and personal fees from Bavarian Nordic, Pfizer, Sanofi, Regeneron, and Merck during the conduct of the study. HJZ reports grants from the Bill & Melinda Gates Foundation, South Africa Medical Research Council, and the National Research Foundation during the conduct of the study. JAGS reports grants from the Bill & Melinda Gates Foundation during the conduct of the study. HC reports grants and personal fees from the Bill & Melinda Gates Foundation, WHO, and Sanofi; and grants from Innovative Medicines Initiative and the National Institute of Health Research (NIHR) during the conduct of the study. HN reports grants and personal fees from the Bill & Melinda Gates Foundation for the submitted work; grants from WHO, Innovative Medicines Initiative, and NIHR; grants and personal fees from Sanofi Pasteur and Foundation for Influenza Epidemiology; and personal fees from Janssen and AbbVie outside the submitted work. All other authors declare no competing interests.

Acknowledgments

This study was funded by the Bill & Melinda Gates Foundation (OPP 1172551). HN and HC are members of the Respiratory Syncytial Virus Consortium in Europe, which has received funding from the Innovative Medicines Initiative 2 Joint Undertaking (116019) that receives support from the EU Horizon 2020 research and innovation programme and the European Federation of Pharmaceutical Industries and Associations. The community-based paediatric acute respiratory infection study in central Vietnam was supported by the Japan Initiative for Global Research Network on Infectious Diseases from the Ministry of Education, Culture, Sport, Science & Technology in Japan, and Japan Agency for Medical Research and Development (JP18fm0108001). XW and YL were supported by scholarships from the China Scholarship Council during the conduct of this study. We thank Javier Diez-Domingo, Sozinho Acacio, Leilani T Nillos, Andrea Gutierrez, and Noelia Reyes for their contributions to study design and the analysis of primary data for the included studies. The findings and conclusions in this Article are those of the authors and do not necessarily represent the official position of the National Institutes of Health or US Department of Health and Human Services.

References

- WHO. Causes of child mortality, 2017. 2018. https://www.who.int/gho/child_health/mortality/causes/en/ (accessed Sept 20, 2019).
- van den Hoogen BG, de Jong JC, Groen J, et al. A newly discovered human pneumovirus isolated from young children with respiratory tract disease. *Nat Med* 2001; **7**: 719–24.
- O'Brien KL, Baggett HC, Brooks WA, et al. Causes of severe pneumonia requiring hospital admission in children without HIV infection from Africa and Asia: the PERCH multi-country case-control study. *Lancet* 2019; **394**: 757–79.
- Shi T, McLean K, Campbell H, Nair H. Aetiological role of common respiratory viruses in acute lower respiratory infections in children under five years: a systematic review and meta-analysis. *J Glob Health* 2015; **5**: 010408.
- Bénet T, Sánchez Picot V, Messaoudi M, et al. Microorganisms associated with pneumonia in children. *Clin Infect Dis* 2017; **65**: 604–12.
- Schuster JE, Williams JV. Human metapneumovirus. *Pediatr Rev* 2013; **34**: 558–65.
- Panda S, Mohakud NK, Pena L, Kumar S. Human metapneumovirus: review of an important respiratory pathogen. *Int J Infect Dis* 2014; **25**: 45–52.
- Kahn JS. Epidemiology of human metapneumovirus. *Clin Microbiol Rev* 2006; **19**: 546–57.
- Hamelin ME, Abed Y, Boivin G. Human metapneumovirus: a new player among respiratory viruses. *Clin Infect Dis* 2004; **38**: 983–90.
- Vinci A, Lee PJ, Krilov LR. Human metapneumovirus infection. *Pediatr Rev* 2018; **39**: 623–24.
- Lefebvre A, Manoha C, Bour J-B, et al. Human metapneumovirus in patients hospitalized with acute respiratory infections: a meta-analysis. *J Clin Virol* 2016; **81**: 68–77.
- Wang M, Cai F, Wu X, Wu T, Su X, Shi Y. Incidence of viral infection detected by PCR and real-time PCR in childhood community-acquired pneumonia: a meta-analysis. *Respirology* 2015; **20**: 405–12.
- Karron RA, San Mateo J, Wanionek K, Collins PL, Buchholz UJ. Evaluation of a live attenuated human metapneumovirus vaccine in adults and children. *J Pediatric Infect Dis Soc* 2018; **7**: 86–89.
- Shafagati N, Williams J. Human metapneumovirus—what we know now. *F1000Res* 2018; **7**: 135.
- Wen SC, Williams JV. New approaches for immunization and therapy against human metapneumovirus. *Clin Vaccine Immunol* 2015; **22**: 858–66.
- Russell CJ, Penkert RR, Kim S, Hurwitz JL. Human metapneumovirus: a largely unrecognized threat to human health. *Pathogens* 2020; **9**: E109.
- WHO. Handbook: IMCI integrated management of childhood illness. Geneva: World Health Organization, 2005.
- Wang X, Li Y, O'Brien KL, et al. Global burden of respiratory infections associated with seasonal influenza in children under 5 years in 2018: a systematic review and modelling study. *Lancet Glob Health* 2020; **8**: e497–510.
- Shi T, McAllister DA, O'Brien KL, et al. Global, regional, and national disease burden estimates of acute lower respiratory infections due to respiratory syncytial virus in young children in 2015: a systematic review and modelling study. *Lancet* 2017; **390**: 946–58.
- Peterson J, Welch V, Losos M, Tugwell P. The Newcastle-Ottawa scale (NOS) for assessing the quality of nonrandomised studies in meta-analyses. 2011. http://www.ohri.ca/programs/clinical_epidemiology/oxford.asp (accessed Sept 9, 2020).
- Stijnen T, Hamza TH, Ozdemir P. Random effects meta-analysis of event outcome in the framework of the generalized linear mixed model with applications in sparse data. *Stat Med* 2010; **29**: 3046–67.
- UN, Department of Economic and Social Affairs, Population Division. World population prospects: the 2017 revision. New York, United Nations, 2017.
- Adams DC, Gurevitch J, Rosenberg MS. Resampling tests for meta-analysis of ecological data. *Ecology* 1997; **78**: 1277–83.
- United Nations Inter-agency Group for Child Mortality Estimation. Levels and trends in child mortality report 2018. New York, NY: United Nations Children's Fund, 2019.
- Sankoh O, Byass P. The INDEPTH Network: filling vital gaps in global epidemiology. *Int J Epidemiol* 2012; **41**: 579–88.
- Ferdous F, Ahmed S, Das SK, et al. Pneumonia mortality and healthcare utilization in young children in rural Bangladesh: a prospective verbal autopsy study. *Trop Med Health* 2018; **46**: 17.
- Ahmed M, Aleem MA, Roguski K, et al. Estimates of seasonal influenza-associated mortality in Bangladesh, 2010–2012. *Influenza Other Respir Viruses* 2018; **12**: 65–71.
- Nair H, Simões EA, Rudan I, et al. Global and regional burden of hospital admissions for severe acute lower respiratory infections in young children in 2010: a systematic analysis. *Lancet* 2013; **381**: 1380–90.
- UNICEF. Pneumonia care-seeking interactive dashboard. June, 2016. <https://data.unicef.org/resources/pneumonia-care-seeking-interactive-dashboard/> (accessed Oct 1, 2019).
- United Nations Inter-agency Group for Child Mortality Estimation. Levels and trends in child mortality report 2015. New York, NY: United Nations Children's Fund, 2015.
- The World Bank. World Bank country and lending groups. <https://datahelpdesk.worldbank.org/knowledgebase/articles/906519> (accessed Feb 25, 2019).
- Troeger C, Blacker B, Khalil IA, et al. Estimates of the global, regional, and national morbidity, mortality, and aetiologies of lower respiratory infections in 195 countries, 1990–2016: a systematic analysis for the Global Burden of Disease Study 2016. *Lancet Infect Dis* 2018; **18**: 1191–210.
- McAllister DA, Liu L, Shi T, et al. Global, regional, and national estimates of pneumonia morbidity and mortality in children younger than 5 years between 2000 and 2015: a systematic analysis. *Lancet Glob Health* 2019; **7**: e47–57.

- 34 Salzberg NT, Sivalogan K, Bassat Q, et al. Mortality surveillance methods to identify and characterize deaths in child health and mortality prevention surveillance network sites. *Clin Infect Dis* 2019; **69** (suppl 4): S262–73.
- 35 Viechtbauer W. Conducting meta-analyses in R with the metafor package. *J Stat Softw* 2010; **36**: 48.
- 36 Stevens GA, Alkema L, Black RE, et al. Guidelines for Accurate and Transparent Health Estimates Reporting: the GATHER statement. *Lancet* 2016; **388**: e19–23.
- 37 Sarna M, Lambert SB, Sloots TP, et al. Viruses causing lower respiratory symptoms in young children: findings from the ORChID birth cohort. *Thorax* 2018; **73**: 969–79.
- 38 Kusel MMH, de Klerk NH, Holt PG, Kebadze T, Johnston SL, Sly PD. Role of respiratory viruses in acute upper and lower respiratory tract illness in the first year of life: a birth cohort study. *Pediatr Infect Dis J* 2006; **25**: 680–86.
- 39 Simon AK, Hollander GA, McMichael A. Evolution of the immune system in humans from infancy to old age. *Proc Biol Sci* 2015; **282**: 20143085.
- 40 Wolf DG, Zakay-Rones Z, Fadeela A, Greenberg D, Dagan R. High seroprevalence of human metapneumovirus among young children in Israel. *J Infect Dis* 2003; **188**: 1865–67.
- 41 Liu L, Oza S, Hogan D, et al. Global, regional, and national causes of under-5 mortality in 2000–15: an updated systematic analysis with implications for the Sustainable Development Goals. *Lancet* 2016; **388**: 3027–35.
- 42 Centers for Disease Control and Prevention, National Center for Health Statistics. Underlying cause of death 1999–2017. December, 2018. <http://wonder.cdc.gov/ucd-icd10.html> (accessed Nov 23, 2019).
- 43 Bennett A, Eisele T, Keating J, Yukich J. Global trends in care seeking and access to diagnosis and treatment of childhood illnesses. Rockville, MD: ICF International, 2015.
- 44 Najnin N, Bennett CM, Luby SP. Inequalities in care-seeking for febrile illness of under-five children in urban Dhaka, Bangladesh. *J Health Popul Nutr* 2011; **29**: 523–31.
- 45 Onyango D, Kikuvi G, Amukoye E, Omolo J. Risk factors of severe pneumonia among children aged 2–59 months in western Kenya: a case control study. *Pan Afr Med J* 2012; **13**: 45.