

Type and non-type specimens of *Aegla* (Decapoda: Anomura: Aegliidae) housed in the Museo de La Plata, Argentina

INÉS I. CÉSAR^{1,2} & CRISTINA DAMBORENEA^{1,3}

¹División Zoología Invertebrados, Museo de La Plata (FCNyM-UNLP), La Plata, Argentina

²CIC Researcher. E-mail: icesar@fcnym.unlp.edu.ar

³CONICET Researcher. E-mail: cdambor@fcnym.unlp.edu.ar

Abstract

The present contribution deals with the type and non-type material of the species of *Aegla* (Decapoda: Anomura: Aegliidae) deposited in the Invertebrate Collection of Museo de La Plata, Argentina. One hundred and thirty-four lots are included, of which 10 lots are type specimens. The material examined includes 11 of the 13 species known from Argentina. Among the studied lots, those examined by Ringuelet (1948, 1960) and by Bond-Buckup & Buckup (1994) stand out. Also, several lots from different regions of Argentina were identified. Type specimens examined were compared with the original descriptions; photographs of the specimens are given in the present report. For each lot the following information is provided: georeferenced locality of collection, collector and collecting date, bibliographical references, category, number of collection according to the rules of the Museo de La Plata, label data (precise transcription), remarks and map of the locations.

Key words: Catalogue, *Aegla* spp., Museo de La Plata Collection

Introduction

The species of *Aegla* Leach, 1820, included in the monotypic endemic family Aegliidae, are the most abundant and widely distributed freshwater decapod crustaceans in South America. They occur in Argentina, Brazil, Bolivia, Chile, Paraguay and Uruguay (Bond-Buckup & Buckup 1994).

The first contribution which revealed the diversity of the group was the monograph on the *Aegla* genus by W. Schmitt (1942). In that report, which is still considered a major taxonomic reference, 13 new species and 2 subspecies were described. Since then, many authors have contributed to the study of the diversity of Aegliidae. Among them, R. Ringuelet, who specially referred to the species from Argentina (1948a, b; 1949a–c; 1960a, b), E. Lopretto (1978a, b; 1979; 1980a, b; 1981), Bond-Buckup & Buckup (1994), Schuldt *et al.* (1988) and Giri & Loy (2008), who made important contributions to the systematic and morphological knowledge of the genus in Argentina. Viau *et al.* (2006) made contributions to the reproductive biology of *Aegla uruguayana*.

Bond-Buckup *et al.* (2008) recognized 63 species in the Neotropical region, most of them with narrow distributions. Of these species currently recognized, 13 are from Argentina of which 7 are endemic. However, the number of species will probably enlarge with increasing sampling in temperate and subtropical South America. Due to their narrow distributions and the degradation of the freshwater habitats that they occupy, *Aegla* spp. are significant species for conservation.

The present contribution deals with type and non-type *Aegla* spp. deposited at the Invertebrate Collection of Museo de La Plata (MLP), Argentina. The collection includes 13 nominal taxons. Many of the studied lots were labeled by W. Schmitt and studied by R. Ringuelet. The purpose of this paper is to present updated information on the *Aegla* spp. housed at Museo de La Plata. Maps illustrating localities and photographs of the type specimens are included.

Material and methods

Prior to this survey, all the type material was separated from the main Crustacean Collection, and label data, number and the information of specimens were compared to the original species description. The holotype or one syntype specimen was photographed. The non-type specimens were also separated, and the label data were compared with the database and with the published information when appropriate. Localities were georeferenced when possible and information is presented in maps.

This catalogue presents the lots of species whose type specimens are deposited in the Collection and those of the remaining species arranged by alphabetical order. In the case of the type material, the category of the type and the number of specimens are indicated.

The material studied is kept in alcohol 70%. Data provided by identifiers on labels were respected. Original labels were kept when available (*e.g.*, W. Schmitt's labels).

Each entry lists:

1. The MLP collection catalogue numbers;
2. In the case of type material, type status and reference;
3. Locality data given as found on the specimen labels. Each locality includes country, province, and locality names. Sometimes provinces, departments or counties were added here. Coordinates and elevation are included.
4. Collector and collecting date when available;
5. Identifiers of non-type lots;
6. Remarks and references of each lot. In the case of the lots that were published with numbers other than those assigned in the collection, or with no number indication, this number is signed after each bibliographical reference (MLP).

In some instances the date of the original description and that on the labels differs, for instance in the month of collecting, or number of specimens. These differences between labeled and published information and discussed in Remarks.

RESULTS

Aegla intercalata Bond-Buckup & Buckup, 1994

(Fig. 1A–C)

Type Material. MLP 46, Holotype (male) and paratypes (35 males and 11 females), Argentina, Catamarca, El rodeo, Las Lajas River, 28°13'S, 65°52'W, 1500 m a.s.l., R.P. Sorrays coll. IV/1959.

Remarks. Bond-Buckup & Buckup (1994) indicated 38 males and 14 females as paratypes.

MLP 1, Paratypes (4 males and 3 females), Argentina, Tucumán, Quebrada de los Sosas, on the way to Tafí del Valle, 26°52'S, 65°40'W, 2014 m a.s.l., 9/XI/1960.

Remarks. Bond-Buckup & Buckup (1994: 176) indicated that the lot is composed of 6 males and 3 females.

Other lots. MLP 118, Argentina, Salta, Juramento River, provincial road n° 5, 25°08'S, 64°57'W, 118 m a.s.l., M. López Ruf coll., 13/XI/1992.

MLP 119, Argentina, Salta, Lumbreira, Juramento River, 25°11'S, 64°55'W, 645 m a.s.l., M. López Ruf and Valverde coll., 13/XI/1992.

MLP 26126, Argentina, Catamarca, Las Estancias pool, M. Heddad coll., 15/V/2002, I. César identified.

MLP 26127, Argentina, Catamarca, Aconquija River, M. Orellana coll., 20/V/2002, I. César identified.

MLP 26128, Argentina, Catamarca, Río del Valle River, 28°40'S, 65°50'W, E. del V. Villoldo coll., XII/2001, I. César identified.

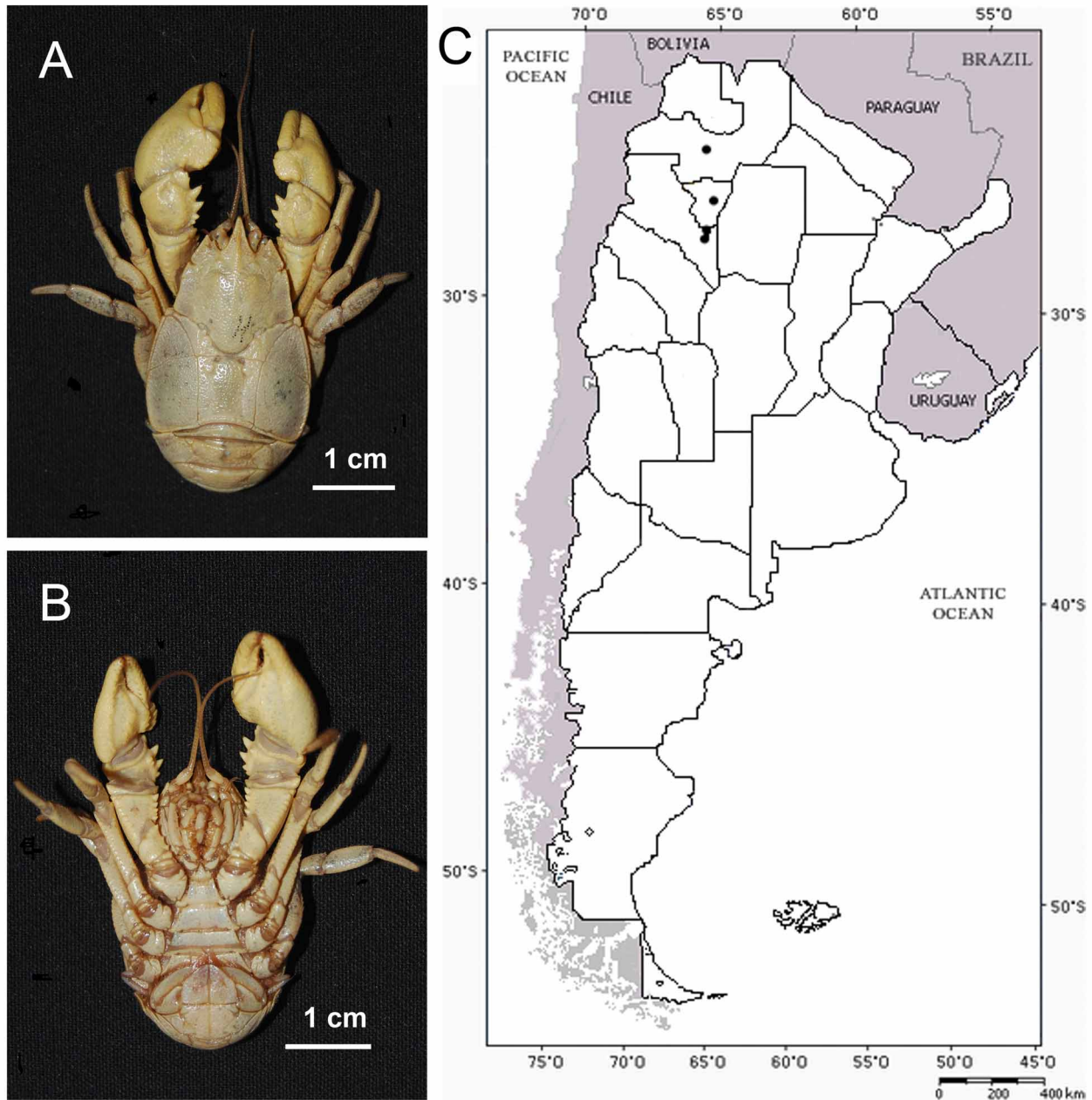


FIGURE 1. *Aegla intercalata*. A, holotype in dorsal view. B, holotype in ventral view. C, Geographic location of specimens from Museo de La Plata Collection.

***Aegla montana* Ringuélet, 1960**

(Fig. 2A–B)

Type material. MLP 41 (86 and 4815), Syntypes (5 males), Argentina, Mendoza, El Sosneado, Atuel River, 35°04'S, 69°34'W, 1543 m a.s.l., Carette coll., 1921.

Remarks. Ringuélet (1948a: 323) mentioned and briefly described this lot, reporting it as *Aegla* sp. He described this species in 1960. Ringuélet (1960b: 231) described the male holotype specimen and 4 male paratypes. The collection presents only one lot with five male specimens. Bond-Buckup & Buckup (1994: 198) studied this material and considered *A. montana* to be a junior synonym of *A. affinis*.

Other lots. MLP 298, (8 males and 1 female), Argentina, Mendoza, El Sosneado, Atuel River, 35°04'S, 69°34'W, 1543 m a.s.l., Prosser coll., 10/IV/1950.

Remarks. The specimens are from type locality and identified by R. Ringuelet. However, no bibliography by the author reporting this material is available. Bond-Buckup & Buckup (1994: 198) studied this material and identified it as *A. affinis*.

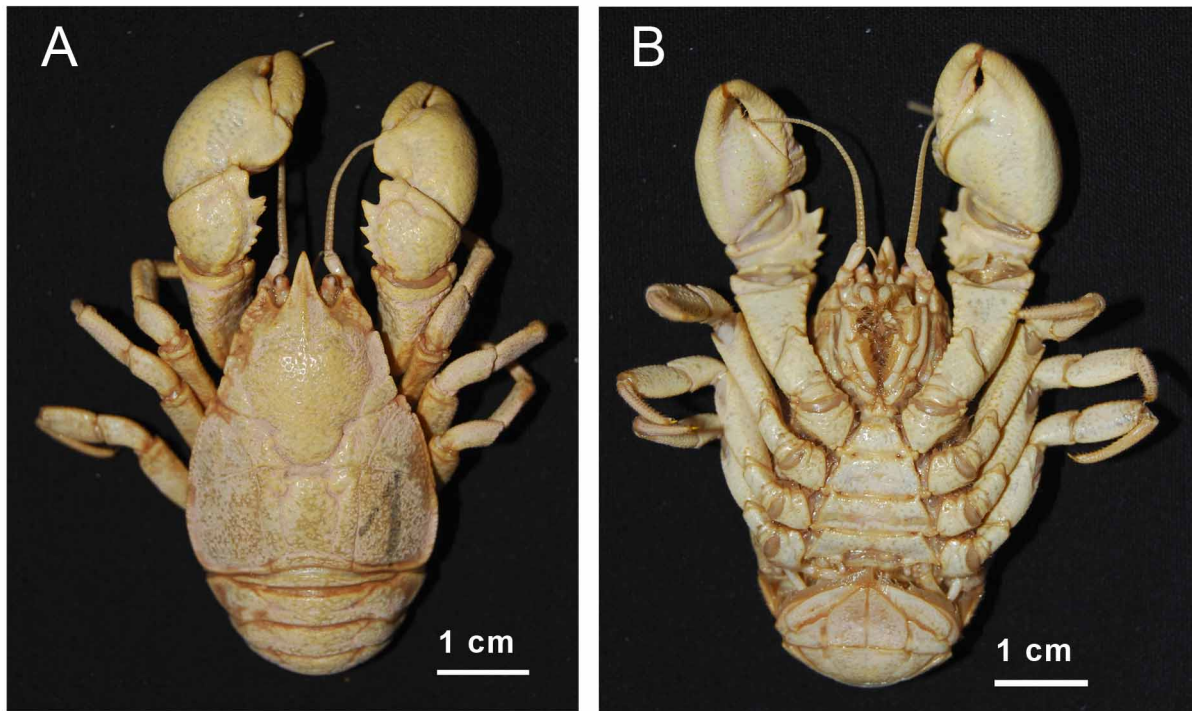


FIGURE 2. *Aegla montana*. A, syntype in dorsal view. B, syntype in ventral view.

Aegla scamosa Ringuelet, 1948

(Fig. 3A–C)

Type material. MLP 87, Lectotype (male), paralectotypes (13 males and 19 females), Argentina, Mendoza, Fray Luis Beltrán, Finca Ghigné, 33°01'S, 68°39'W, 683 m a.s.l., E. Mac Donagh coll., 27/II/1942.

Remarks. R. Ringuelet (1948a: 315) reported the type material, 19 males and 24 females, as “cotypes”, a term which is not recognized by the International Code of Zoological Nomenclature (Recommendation 73E). Bond-Buckup & Buckup (1994: 185) designated lectotype and paralectotypes.

Other lots. MLP 10 (206 and 11866), Argentina, Mendoza, Tupungato, Villa brook, 33°22'S, 69°7'W, 1037 m a.s.l., L. Serra coll., 13/I/1959.

Remarks. Bond-Buckup & Buckup identified (1994: 185).

MLP 53 (295 and 11856), Argentina, Mendoza, Blanco Encalada, Mendoza River, El Infiernillo stream, 32°29'S, 68°17'W, A. Caballero coll., I/1950.

Remarks. Bond-Buckup & Buckup (1994: 185) identified.

MLP 33 (and 11862), Argentina, Mendoza, Villavicencio (in irrigation ditch), 32°32'S, 69°01'W, E. Rolleri coll., VI/1949.

Remarks. Bond-Buckup & Buckup identified (1994: 185).

MLP 294, Argentina, Mendoza, Tunuyán, El Sauce, El Infiernillo stream, 33°34'S, 69°01'W, 860 m a.s.l., A. Caballero coll., 15/IV/1958.

Remarks. Bond-Buckup & Buckup identified (1994: 185).

MLP 23 (and 98), Argentina, Mendoza, Uspallata stream, 32°26'S, 65°50'W, E. Mac Donagh coll., 9/IV/1947.

Remarks. Ringuelet (1948a: 319) and Bond-Buckup & Buckup (1994: 185) identified.

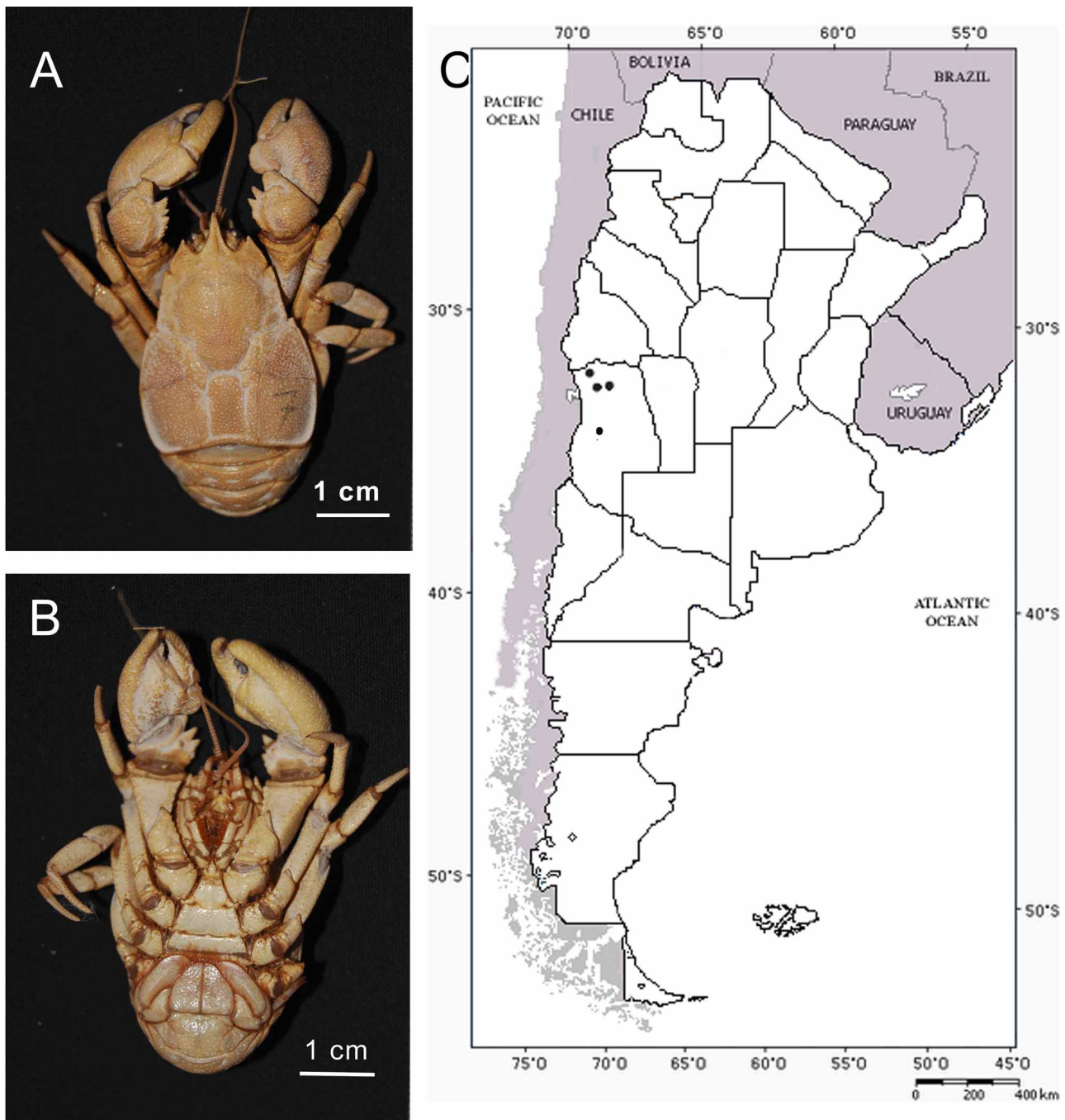


FIGURE 3. *Aegla scamosa*. A, lectotype in dorsal view. B, lectotype in ventral view. C, Geographic locations of specimens from Museo de La Plata Collection.

MLP 52 (299 and 11830), Argentina, Mendoza, Potrerillos, Las Chacritas, 32°57'S, 69°10'W, 1469 m a.s.l., L.Serra coll.

Remarks. Bond-Buckup & Buckup (1994: 185) identified.

MLP 18, Argentina, Mendoza, Potrerillos, 32°57'S, 69°10'W, 1469 m a.s.l., Risso coll., 27/XII/1947.

Remarks. Bond-Buckup & Buckup identified.

MLP 50 (and 146), Argentina, San Juan, San Julián, Sonda, 1942.

Remarks. R. Ringuelet identified (1948a: 319).

MLP 51 (71 and 11855), Argentina, Mendoza, Chacras de Coria, 33°0'S, 68°52'W, 902 m a.s.l.

Remarks. R. Ringuelet (1948a: 319) and Bond-Buckup & Buckup (1994: 185) identified.

MLP 55 (and 73), Argentina, Mendoza, Viluco, 1919.

Remarks. R. Ringuet (1948a: 319) and Bond-Buckup & Buckup (1994: 185) identified.

MLP 56 (12 and 72), Argentina, Mendoza, Uspallata stream, 32°40'S, 69°22'W, 1895 m a.s.l., E. Mac Donagh coll., 9/IV/1937.

Remarks. R. Ringuet (1948a: 319) and Bond-Buckup & Buckup (1994: 185) identified.

Aegla septentrionalis Bond-Buckup & Buckup, 1994

(Fig. 4A–C)

Type material. MLP 29 (and 53), Holotype (male) and paratypes, Bolivia, Tupiza, 21°26'60S, 65°43'00W, 3165 m a.s.l., P. Klepovich coll., 1948.

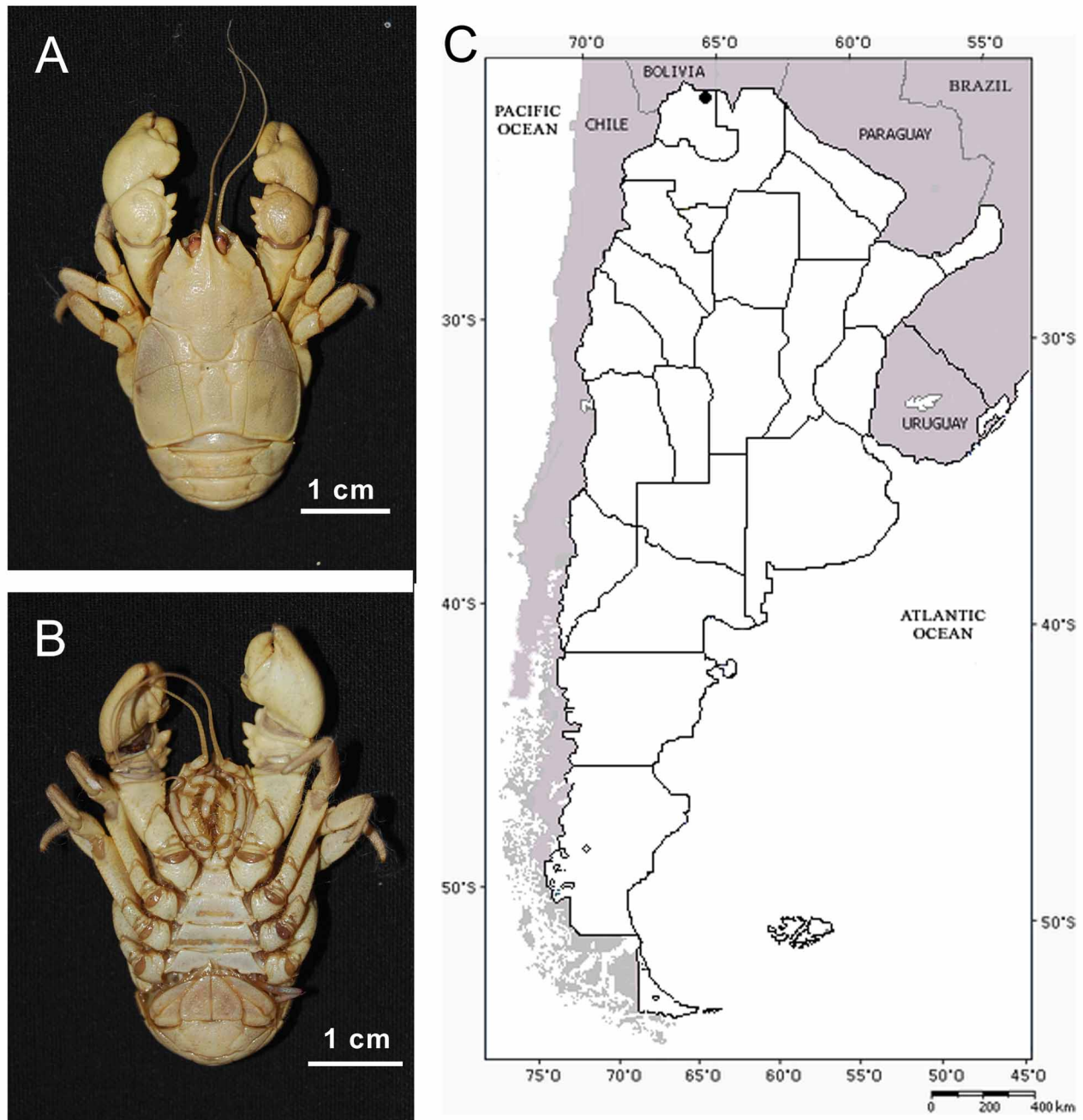


FIGURE 4. *Aegla septentrionalis*. A, holotype in dorsal view. B, holotype in ventral view. C, Geographic locations of specimens from Museo de La Plata Collection.

Remarks. Ringuet (1960a: 245) considered these lots as members of *A. neuquensis affinis*, G. Bond-Buckup & L. Buckup identified (1994: 196).

MLP 104 (102 and 11861), Paratype, Bolivia, Tarija, Río Sella (200 m ahead the mouth of Guadalquivir River), 21°31'S, 64°45'W, 2114 m a.s.l., Published as MLP s/n.

MLP 175 (102 and 11861), Paratype (1 male and 3 females), Argentina, Jujuy, Cangrejillos, 22°25'S, 66°34'W, 3645 m a.s.l., L.Cabrera coll., II/1918.

Remarks. Ringuet (1949a: 34) identified this lot as *A. neuquensis affinis*. Bond Buckup & Buckup indicated 1 male and 4 females.

MLP 79 (11887 and 77), Paratype, Argentina, Salta, Río Arenales, E.Mac Donagh coll., 5/V/1946.

Remarks. Ringuet (1948a: 301, 309; 1949a: 34) identified this lot as *A. neuquensis affinis*.

Other lots. MLP 3, Argentina, Jujuy, Casa Binda, El Ojito, 22°58'S, 66°04'W, 3603 m a.s.l., Torres and Dadone coll., 19/I/1959.

MLP 103, Bolivia, Tupiza. 21°26'60S, 65°43'0W, 3165 m a.s.l., 1948, Bond-Buckup identified.

MLP 26118, Argentina, Jujuy, Chorrillo at the side of the road from Iruya to Humahuaca, 22° 55'15S, 65°17'24W. C. Ituarte coll., 15/XII/2001.

MLP 26119, Argentina, Salta, stream with no name along National Road n° 51, Cachi, 25°09'12S, 65°41'16W. C. Ituarte coll., 19/XII/2001.

Aegla singularis Ringuet, 1948

(Fig. 5A–B)

Type material. MLP 109 (and 148), Syntype (2 males and 3 females), Argentina, Misiones, Pindapoy, 27°45'S, 55°48'W, A. Bridarolli coll., 05/VI/1943.

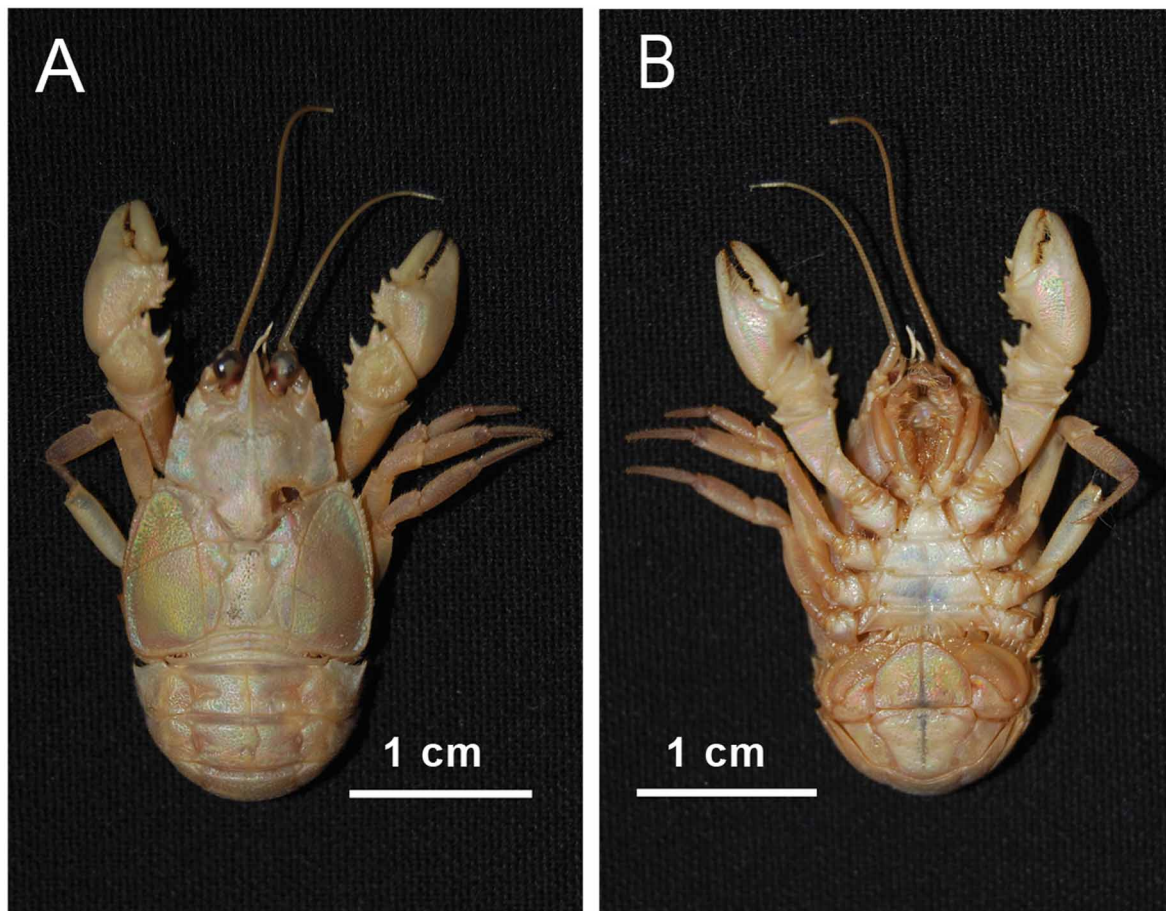


FIGURE 5. *Aegla singularis*. A, syntype in dorsal view. B, syntype in ventral view.

Remarks. Ringuélet (1948b: 204) designated 6 specimens as “cotypes”, 3 males and 3 females belonging to 2 lots: MLP 147 (Pindapoy, Misiones, 1 male, I/1943, coll. M. Birabén) and MLP 148. Measurements of 2 males and 2 females from lot 148 and of 1 female from lot 147 are provided in the description. No reference on the lot of the remaining type female is given. In the original description, Ringuélet mentioned another lot, MLP 149 from San Ignacio, Misiones, Argentina, 1 male, II/1945, coll. by M. Büllow. Lots 147 and 149 are not found in the Collection of Museo de La Plata.

This lot was studied by Bond-Buckup & Buckup (1994: 240–241).

Other species in the MLP collection

Aegla abtao riolimayana Schmitt, 1942

(Fig. 6A)

MLP 19, Argentina, Neuquén, Aluminé lake, 38°56'S, 71°08'W. A. Bachmann coll., 20/I/1958.

Remarks. Bond-Buckup & Buckup identified (1994: 187).

MLP 72, Argentina, Neuquén, Huechulafquen lake, San Pedro stream, 39°46'S, 71°37'W, C. Jara coll., 16/I/1985.

Remarks. M. Schuldt identified, and Bond-Buckup & Buckup identified (1994: 187).

MLP 20, Argentina, Neuquén, San Martín de los Andes, Lolog lake, 40° 4'S, 71°19'W, 954 m a.s.l., 19/III/1959.

Remarks. This lot presents specimens of this species and of *A. neuquensis*. Bond-Buckup & Buckup identified (1994: 187).

MLP 7, Argentina, Neuquén, Venados lake, few km to the SW of Lácar lake, 40°03'S, 71°41'W, J. R. Navas coll., 12/II/1959.

Remarks. Bond-Buckup & Buckup identified (1994: 187).

MLP 32, Argentina, Neuquén, Quillahuinco, Lacar lake, 40°10'S, 71°20'W, 930 m a.s.l. 20/III/1959.

Remarks. Bond-Buckup & Buckup identified (1994: 187).

MLP 43 (and 21), Argentina, Neuquén, Quillahuinco, Lacar lake, 40°10'S, 71°20'W, S. R. Olivier coll., 20/III/1959.

Remarks. Bond-Buckup & Buckup identified (1994: 187).

MLP 12 (and 5), Argentina, Neuquén, Quillahuinco, Lácar lake, under coastal stones, 40°11'S, 71°30'W, S. R. Olivier coll., 20/III/1959.

Remarks. Bond-Buckup & Buckup identified (1994: 187).

MLP 27, Argentina, Neuquén, Quillahuinco, Lacar lake, 40°10'S, 71°20'W, 930 m a.s.l., 20/III/1959.

Remarks. Bond-Buckup & Buckup identified (1994: 187).

MLP 116 (and 48), Argentina, Neuquén, Parque Nacional Nahuel Huapi, Isla Victoria, Nahuel Huapi lake, 40°56'S, 71°33'W, O. De Ferraris coll., I/1950.

Remarks. Bond-Buckup & Buckup identified (1994:187).

MLP 4, Argentina, Neuquén, La Unión, Paimún lake, 39°43'S, 71°35'W, A. Bachmann. coll., 26/XII/1957.

MLP 38 (152 and 11883), Argentina, Neuquén, Isla Victoria, Nahuel Huapi lake, 40°56'S, 71°33'W, S. Coscarón and O. De Ferraris coll., II/1951.

MLP 39, Argentina, Río Negro, San Carlos de Bariloche, Nahuel Huapi lake, 41°8'S, 71°17'W, 893 m a.s.l., I/1964.

MLP 116, Argentina, Neuquén, Chimehuín River, 39°55'S, 71°04'W, 902 m a.s.l., C. Jara coll., 8/II/1982. M. Schuldt identified.

MLP 120, Argentina, Río Negro, Villa Tacul, 41°8'60S, 71°17'60W, 893 m a.s.l., M. Schuldt coll., 29/II/1996. M. Schuldt identified.

MLP 45, Argentina, Río Negro, San Carlos de Bariloche, Correntoso lake, 41°8'S, 71°17'W, 893 m a.s.l., O. De Ferraris coll., I/1950. I. César identified.

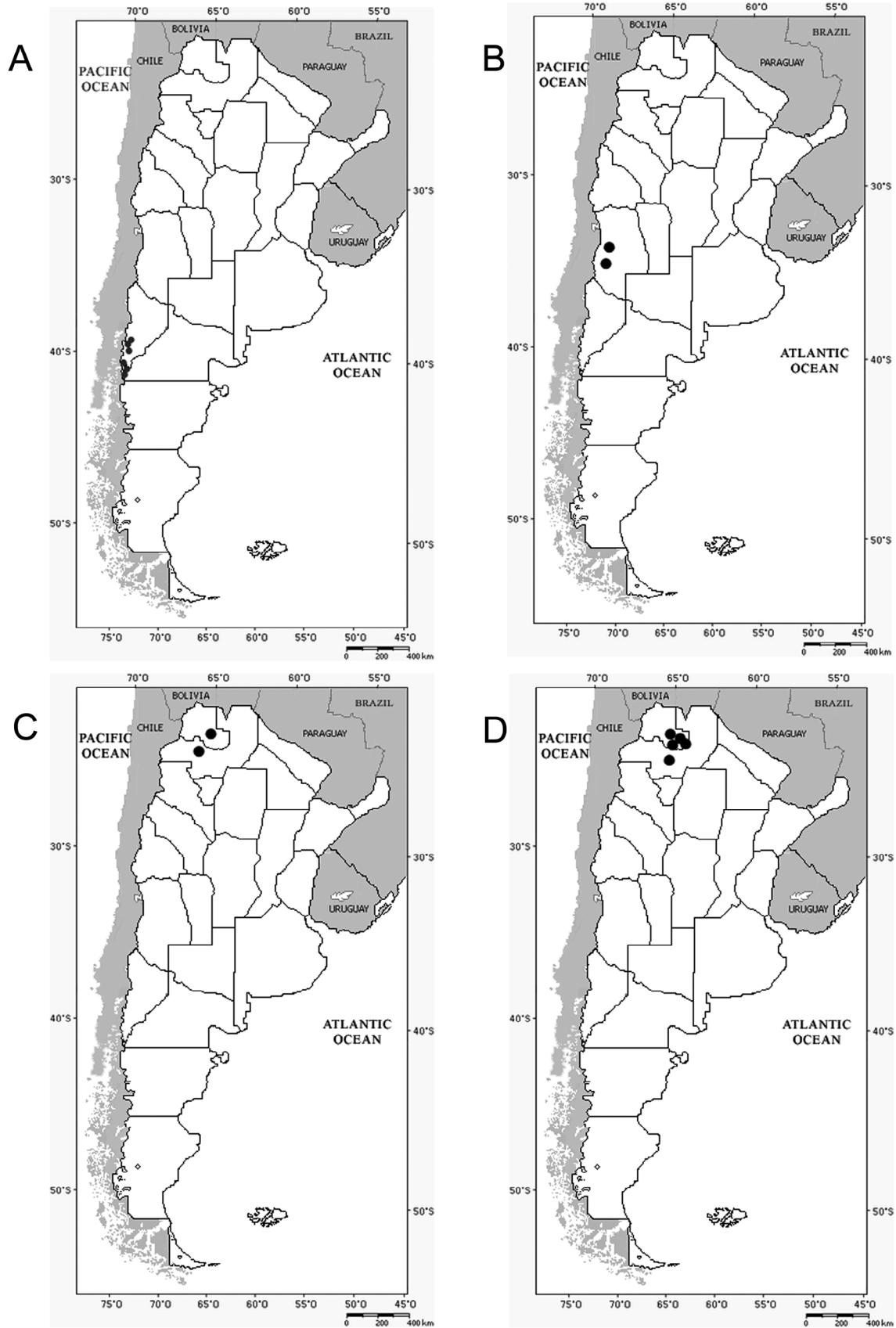


FIGURE 6. Geographic location of specimens of *Aegla* spp. from Museo de La Plata Collection. A, *Aegla abtao riolimayana*. B, *Aegla affinis*. C, *Aegla humahuaca*. D, *Aegla jujuyana*.

***Aegla affinis* Schmitt, 1942**

(Fig. 6B)

MLP 107, Argentina, Mendoza, San Rafael, Matancilla stream, 34°36'S, 68°19'W, 690 m a.s.l., Borrello coll.

Remarks. This lot was originally identified as *A. montana*. Bond-Buckup & Buckup (1994: 199; MLP s/n) identified it as *A. affinis*.

MLP 14 (and 94), Argentina, Mendoza, Barrancas river and Malargüe, 35°28'S, 69°34'W, 1416 m a.s.l., J.M. Cei coll., 4/IV/1951.

Remarks. Bond-Buckup & Buckup identified (1994: 199).

MLP 11874, Argentina, Mendoza, El Sonseado, 35°04'S, 69°34'W, 1543 m a.s.l., T. R. Ugarte coll., 10/XII/1949.

Remarks. This lot was originally identified as *A. montana*. Bond-Buckup & Buckup (1994: 198; MLP 54) identified it as *A. affinis*.

MLP S/N, Argentina, Salta, La Poma, Puente del Diablo, 24°43'S, 66°13'W, 3195 m a.s.l., E. Lipps coll., 16/IX/1999.

The following lots can be added

MLP 41 (and 86), Syntypes of *A. montana*, studied and considered by Bond-Buckup & Buckup (1994: 198) as a junior synonym of *A. affinis* (published MLP 86, 4815, 11875).

MLP 298, identified by R. Ringuet and labeled as *A. montana*. Bond-Buckup & Buckup (1994: 199) identified it as *A. affinis*.

***Aegla humahuaca* Schmitt, 1942**

(Fig. 6C)

MLP 76 (and 11864), Argentina, Jujuy, Tilcara, 23°34'S, 65°22'W, 3139 m a.s.l., M. I. Hylton Scott coll., II/1944.

Remarks. Ringuet (1949a: 25) and Bond-Buckup & Buckup identified (1994: 175).

MLP 101, Argentina, Salta, Toro River in El Gólgota, R. Ringuet identified.

Remarks. This specimen is spoil (Ringuet 1949a: 25; MLP150), Bond-Buckup & Buckup (1994: 175).

MLP 58 (293 and 11878), Argentina, Tucumán, Tafí del Valle, 26°52'S, 65°40'W, 2014 m a.s.l., Wygozinsky coll.

Remarks. Ringuet identified this lot as *A. franca* Schmitt, 1942, Bond-Buckup & Buckup identified it as *A. humahuaca* (1994: 175; MPL 58/293).

***Aegla jujuyana* Schmitt, 1942**

(Fig. 6D)

MLP 77 (59 and 11828), Argentina, Jujuy, Grande River, 23°23'S, 65°45'W, 3984 m a.s.l., A. Bridarolli coll., 23 /II/1946.

Remarks. R. Ringuet identified (1949a: 19) and mentioned M. Birabén as the collector and the date reported by the author is 1945, Bond-Buckup & Buckup identified (1994: 179).

MLP 92 (74 and 11893), Argentina, Jujuy, Grande River, Termas de Reyes, 24°10'S, 65°22'W, 1363 m a.s.l., M. Birabén coll., XI/1937. R. Ringuet.

Remarks. R. Ringuet (1949a: 19, MLP 74) and Bond-Buckup & Buckup (1994: 179, MLP 74) identified.

MLP 75 (99 and 11844), Argentina, Jujuy, Tilcara, 23°34'S, 65°22'W, 3139 m a.s.l., M. I. Hylton Scott coll., II/1944.

Remarks. Ringuelet (1949a: 19) and Bond-Buckup & Buckup (1994: 179) identified.

MLP 9, Argentina, Jujuy, Palma Sola, Sauzal de María Mercedes, 23°58'S, 64°17'W, 1200 m a.s.l., P. Williner coll., 2/X/1969.

Remarks. Bond-Buckup & Buckup identified (1994: 179).

MLP 106, Bolivia, Tupiza, 21°26'S, 65°43'W, 3165 m.a.s.l, 1948, Bond-Buckup identified.

MLP 26117, Argentina, Salta, Campo Alegre dam, Tributary of Uberna River coming from the dam, 23°08'S, 64°02'W, 1400 m a.s.l., C. Ituarte coll., 18/XII/2001. I. César identified.

MLP S/N, Argentina, Salta, Tributary of Uberna River coming from the dam. Campo Alegre, 24°35'07S, 65°21'50W, 1400 m a.s.l., C. Ituarte coll., 18/XII/2001.

Aegla neuquensis Schmitt, 1942

(Fig. 7A)

MLP 114, Argentina, Neuquén, Ñireco brook, 41°08'S, 71°17'W, 893 m a.s.l., 30/X/1984, E. Lopretto identified.

MLP 20, Argentina, Neuquén, San Martín de los Andes, Lolog lake, 40°04'S, 71°19'W, 954 m a.s.l., 19/III/1959.

Remarks. This lot presents specimens of this species and of *A. abtao riolimayana*. Bond-Buckup & Buckup identified (1994: 192, MLP s/n).

MLP 94 (67 and 11848), Argentina, Neuquén, upper Picún Leufú River, 39°31'S, 69°15'W, 411 m a.s.l., M. Birabén coll., 11/III/1939.

Remarks. Ringuelet (1949a: 301) mentioned the presence of a label by W. Schmitt "*A. neuquensis*".

MLP 68 (and 11868), Argentina, Río Negro, Choele Choel, Pomona, 39°28'S, 65°30'W, 126 m a.s.l., M. Bruzzoone coll., 20/I/1944.

MLP 116, Argentina, Neuquén, Chimehuín River, 39°55'S, 71°04'W, 902 m a.s.l., C. Jara coll., 8/II/1949, M. Sculdt identified.

MLP 97 (and 13), Argentina, Río Negro, stream 40 Km from Bariloche city.

Remarks. A label by W. Schmitt indicated "*neuquensis* probably". R. Ringuelet (1948a: 301) and Bond-Buckup & Buckup identified (1994: 192).

MLP 11890 (and 8), Argentina, Chubut, Río Verde River, 41°56'S, 66°03'W, M. Birabén coll., 22/II/1948.

Remarks. Bond-Buckup & Buckup identified (1994: 192, MLP s/n).

MLP 11884, Argentina, Chubut, Fontana lake, Pepita, 44°56'S, 71°30'W, M. Birabén coll., 20/II/1948.

Remarks. Bond-Buckup & Buckup identified (1994: 192).

MLP 19, Argentina, Neuquén, Aluminé lake, 38°56'S, 71°08'W, A. Bachmann coll., 20/I/1958.

Remarks. Bond-Buckup & Buckup identified (1994: 192 MLP s/n).

MLP 22, Argentina, Río Negro, General Roca, Paso Córdoba, 39°01'S, 67°34'W, 221 m a.s.l., A. Bachmann coll., 21/III/1959.

Remarks. Bond-Buckup & Buckup identified (1994: 192).

MLP 265 (and 11869), Argentina, Neuquén, Limay River, 40°00'S, 70°00'W, S. Coscarón coll. I/1954.

Remarks. Bond-Buckup & Buckup identified (1994: 192).

MLP 36, Argentina, Chubut, Cándor, Paso de los Indios, 42°20'S, 71°08'W, Paleo coll., 18/II/1961.

Remarks. Bond-Buckup & Buckup identified (1994: 192).

MLP 11885 (234 and 11923), Argentina, Chubut, Comodoro Rivadavia, Río Mayo River, 45°40'S, 70°16'W, 460 m a.s.l., R. Ringuelet coll., 17/XII/1952.

Remarks. R. Ringuelet and Bond-Buckup & Buckup identified (1994: 192).

MLP 11908, Argentina, Río Negro, Gobernador Fernández Oro, 38°57'S, 67°55'W, 245 m a.s.l., S. Coscarón coll., I/1950.

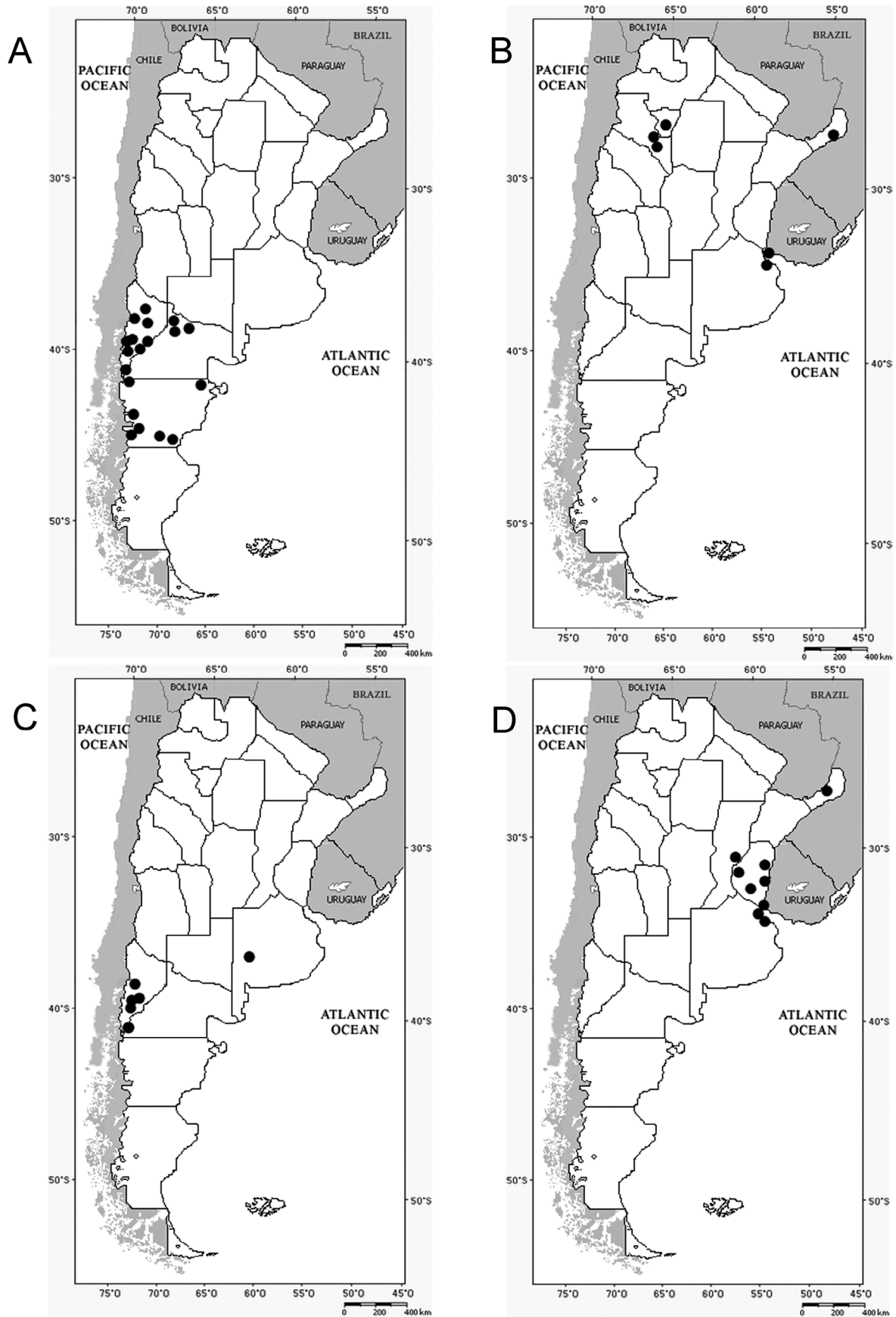


FIGURE 7. Geographic location of specimens of *Aegla* spp. from Museo de La Plata Collection. A, *Aegla neuquensis*. B, *Aegla platensis*. C, *Aegla riolimayana*. D, *Aegla uruguayana*.

Remarks. Bond-Buckup & Buckup identified (1994: 192, MLP s/n).

MLP 49, Argentina, Río Negro, General Roca. 39°01'60S, 67°34'60W, 221 m a.s.l., XII/1961, Bond-Buckup identified.

MLP 69 (71 and 11868), Argentina, Río Negro, Nahuel Huapi lake, 40°58'S, 71°09'W, M. Birabén coll., II/1943.

Remarks. Ringuelet identified (1948a: 301).

MLP 73, Argentina, Neuquén, Huechulafquen lake, San Pedro stream, 39°46'S, 71°37'W, P. Núñez coll., 16/I/1985.

Remarks: M. Schuldt and Bond-Buckup & Buckup identified (1994: 192, MLP s/n).

MLP 70 (11898), Argentina, Neuquén, Covunco, 38°31'S, 70°15'W, 720 m a.s.l., I. Grasso and A. Peñalva coll., 25/II/1945.

Remarks. R. Ringuelet (1948a: 301) and Bond-Buckup & Buckup identified (1994: 192).

MLP 85 (75 and 11902), Argentina, Neuquén, stream near lake Meliquina, between Lacar and Trafal lakes, 40°22'S, 71°18'W, A. Bridarolli coll., I/1941.

Remarks. R. Ringuelet identified (1948a: 301).

MLP 76 (156 and 11845), Argentina, Río Negro, Gobernador Fernández Oro, 38°57'0S, 67°55'0W, 245 m a.s.l., S. Coscarón coll., I/1949, R. Ringuelet identified.

MLP 80 (and 11899), Argentina, Chubut, Valle Huemules, Arroyo del Humo stream, 45°07'S, 69°00'W, M. Bruzzone coll., 17/II/1943.

Remarks. R. Ringuelet (1948a: 301) and Bond-Buckup & Buckup identified (1994: 192).

MLP 96 (and 11858), Argentina, Mendoza (with undetermined locality), Huathal coll.

Remarks. A label by W. Schmitt indicates "A. neuquensis?" R. Ringuelet identified (1948a: 301).

MLP 80 (81 and, 11888), Argentina, Chubut, lower Putrachoique River, 44°04'S, 70°36'W, M. Birabén coll., 13/II/1938.

Remarks. R. Ringuelet (1948a: 301) and Bond-Buckup & Buckup identified (1994: 192).

MLP 81 (68 and 11868), Argentina, Río Negro, Choele Choel, Pomona, 39°28'S, 65°30'W, 126 m a.s.l., M. Bruzzone coll., 20/I/1944.

Remarks. R. Ringuelet identified (1948a: 301), the material is a fragment.

MLP 82 (and 94), Argentina, Neuquén, Collón Curá River, 40°07'S, 70°43'W, 746 m a.s.l., Giovanelli coll., 1902.

Remarks. W. Schmitt & R. Ringuelet identified (1948a: 301).

MLP 82 (and 11904), Argentina, Chubut, Río Lejos River, tributary of Chubut River, M. Birabén coll 4/III/1938.

Remarks. R. Ringuelet (1948a: 301) and Bond-Buckup & Buckup identified (1994: 192). These last authors indicated it from Lejo River, by mistake in the reading of the label

MLP 105, Argentina, Chubut, Sarmiento, 45°36'S, 69°04'W, 258 m a.s.l., 28/X/1960.

Remarks. Bond-Buckup & Buckup identified (1994: 192, MLP s/n).

MLP 11, Arroyo Nurihuase, Alpañir. 17/II/1958.

MLP 47, Argentina, Neuquén, Parque Nacional Lanín, Huechulafquen lake, Cañicul bay, 39°46'S, 71°37'W, M. L. Marín coll., 1/I/1973.

MLP 26115, Argentina, Chubut, Colonia Sarmiento, 45°36'S, 69°04'W, 2.58 m a.s.l., 26/I/1960.

Aegla platensis Schmitt, 1942

(Fig. 7B)

MLP 26116, Argentina, Buenos Aires, Isla Martín García, Río de la Plata River, 34°09'S, 58°15'W, 27 m a.s.l., 14/X/1924.

MLP 16 (and 11871), Argentina, Misiones, San Javier, 27°52'S, 55°07'W, 75 m a.s.l. M. Birabén coll., XI/1918.

Remarks. Bond-Buckup & Buckup identified (1994: 189 MLP s/n).

MLP 24 (and 178), Argentina, Tucumán, spring, 26°51'S, 65°16'60W, 380 m a.s.l., A. C. Umana coll., 4/II/1944.

Remarks. R. Ringuelet (1949a: 7) and Bond-Buckup & Buckup identified (1994: 189).

MLP 86 (and 60), Argentina, Tucumán, Tafí, spring, 26°51'S, 65°16'W, 380 m a.s.l., A. C. Umana coll., 4/II/1944.

Remarks. R. Ringuelet identified (1949a: 7), Bond-Buckup & Buckup identified (1994: 189).

MLP 153 (and 11921), Paraguay, Colonia Independencia, Itá brook. 25°43'S, 56°15'W, 161 m a.s.l., F. H. Schade coll., 10/XII/1947.

Remarks. R. Ringuelet and Bond-Buckup & Buckup identified (1994: 189).

MLP 154 (and 11919), Paraguay, Colonia Independencia, 25°43'S, 56°15'W, 161 m a.s.l., F. H. Schade coll., 14/I/1948, R. Ringuelet identified.

MLP 95 (63 and 11857), Argentina, Buenos Aires, La Plata, 34°55'53S, 57°56'56W, 26 m a.s.l., 25/IX/1920.

Remarks. R. Ringuelet and Bond-Buckup & Buckup identified (1994: 189).

MLP 26129, Argentina, Catamarca, Río del Valle shore, 28°40'S, 65°50'W, E. del V. Villoldo coll., 2/I/2004, I. César identified.

MLP 25 (and 25813), Argentina, Misiones, bridge in Guarupá stream, J. J. Parodiz coll., XII/1943.

Remarks. Bond-Buckup & Buckup identified (1994: 189).

MLP 35 (11909), Alto Uruguay River.

Remarks. Bond-Buckup & Buckup identified (1994: 189).

MLP 85 (and 152), Paraguay, Colonia Independencia, 25°43'S, 56°15'W, 161 m a.s.l., F. H. Schade, 10/XII/1947.

Remarks. R. Ringuelet and Bond-Buckup & Buckup identified (1994: 189).

MLP 89, Argentina, Buenos Aires, Isla Martín García, 34°09'29S, 58°15'10W, 27 m a.s.l., S. R. Castillo coll., 2/III/1935, R. Ringuelet identified.

MLP 93 (61 and 1834), Argentina, Catamarca, San Fernando del Valle de Catamarca, 28°28'S, 65°46'W, 519 m a.s.l., B. Schaefer coll., V/1946.

Remarks. R. Ringuelet (1949a: 7) and Bond-Buckup & Buckup identified (1994: 189).

Aegla riolimayana Schmitt, 1942

(Fig. 7C)

MLP 88 (93 and 11839), Argentina, Río Negro, Nahuel Huapi lake, 41°08'S, 71°17'W, 893 m a.s.l., M. Birabén coll., II/1943.

Remarks. R. Ringuelet identified (1948a: 321) and mentioned a label by W. Scmitt "*A. riolimayana*".

MLP 95 (100 and 11877), Argentina, Neuquén, Collón Curá River, 40°07'S, 70°43'W, 746 m a.s.l., Giovanelli coll., 1902.

Remarks: R. Ringuelet identified (1948a: 321) and mentioned a label by W. Scmitt "*A. riolimayana*".

MLP 17, Argentina, Buenos Aires, Carhué Chico River, 37°10' S, 62°43'W, 107 m a.s.l., 19/III/1935, Bond-Buckup & Buckup identified.

MLP 31 (and 112), Argentina, Neuquén, Parque Nacional Nahuel Huapi, Isla Victoria, Nahuel Huapi lake, 40°56'S, 71°33'W, O. De Ferraris coll., I/1950, Bond-Buckup & Buckup identified.

MLP 84 (and 11840), Argentina, Río Negro, Ñirihuau brook, 41°08'S, 71°17'W, 893 m a.s.l., E. Mac Donagh coll., 2/IV/1947.

Remarks. R. Ringuelet identified (1948a: 321).

MLP 87 (and 88), Argentina, Río Negro, Moreno lake, 41°08'S, 71°17'W, 893 m a.s.l., 28/III/1942.

Remarks. R. Ringuelet identified (1948a: 321).

MLP 90 (and 84), Argentina, Río Negro, Ñirihuau brook, Departamento Bariloche, 41°08'S, 71°17'W, 893 m a.s.l., E. Mac Donagh coll., 4/II/1947, R. Ringuelet identified.

Aegla uruguayana Schmitt, 1942

(Fig. 7D)

MLP 115, Argentina, Entre Ríos, Estancia La Peregrina, Gualeguay, VI/1952, R. Ringuélet identified.

MLP 70 (and 46), Argentina, Entre Ríos, Gualeguaychú, Gualeguaychú stream, 33°0'37S, 58°30'51W, 14 m a.s.l., II/1947, R. Ringuélet coll., R. Ringuélet identified.

MLP 113, Argentina, Buenos Aires, Berisso, Paulino island, 34°52'S, 57°52'W, 6 m a.s.l., 18/IV/1988.

MLP 117, Argentina, Misiones, bridge in Santa María stream, 27°58'0S, 55°21' 0W, J. J. Parodiz coll., XII/1943.

MLP 2, Argentina, Entre Ríos, Concepción del Uruguay, Molino stream, La Salamanca, 32°28'S, 58°13'W, 2 m a.s.l. VII/1958.

Remarks. Bond-Buckup & Buckup identified (1994: 83, MLP s/n).

MLP 6, Argentina, Buenos Aires, Ciudad de Buenos Aires, Lago de Palermo, 34°34'S, 58°25'W, 22 m a.s.l., M. Birabén coll.

Remarks. Bond-Buckup & Buckup identified (1994: 184, MLP s/n).

MLP 162 (and 11891), Argentina, Entre Ríos, Diamante, 32°03'52S, 60°38'33W, 22 m a.s.l., Torres coll., 14/VII/1951.

Remarks. Bond-Buckup & Buckup identified (1994: 83).

MLP 34, Argentina, Delta del Paraná, Caraguará brook, A. Bachmann coll., 12/II/1955, Bond-Buckup identified.

MLP 40 (and 181), Argentina, Buenos Aires, La Plata, 34°55'53S, 57°56'56W, 26 m a.s.l., E. Risso coll., III/1949, Bond-Buckup identified.

MLP 49 (57 and 11841), Argentina, Buenos Aires, La Plata, Lago del Bosque, 34°55'53S, 57°56'56W, 26 m a.s.l., III/1948.

Remarks. R. Ringuélet and Bond-Buckup & Buckup identified (1994: 183).

MLP 291 (and 11895), Argentina, Buenos Aires, La Plata, 34°55'53S, 57°56'56W, 26 m a.s.l., Rosas Costa coll., R. Ringuélet identified.

MLP 289, Argentina, Delta del Paraná, A. Bachmann coll., 29/III/1954.

Remarks. R. Ringuélet and Bond-Buckup & Buckup identified (1994: 183).

MLP 288 (63 and 11882), Argentina, Buenos Aires, La Plata, 34°55'53S, 57°56'56W, 26 m a.s.l., XII/1948, R. Ringuélet identified.

MLP 59, Argentina, Entre Ríos, Gualeguaychú, 33°0'37S, 58°30'51W, 14 m a.s.l., R. Ringuélet coll., VII/1947.

Remarks. R. Ringuélet and Bond-Buckup & Buckup identified (1994: 183).

MLP 48 (65 and 11853), Argentina, Santa Fe, Colastiné River, 31°40'S, 60°37' W, 8 m a.s.l. A. Berst coll.

Remarks. R. Ringuélet and Bond-Buckup & Buckup identified (1994: 183).

MLP 66 (65 and 11852), Argentina, Buenos Aires, La Plata, 34°55'53S, 57°56'56W, 26 m a.s.l., 13/V/1918, R. Ringuélet identified.

MLP 67 (52 and 11900), Argentina, Mendoza. Huathal coll.

Remarks. R. Ringuélet (1948a: 324) and Bond-Buckup & Buckup identified (1994: 83).

MLP 66 (and 11847), Argentina, Entre Ríos, Gualeguaychú, 33°0'37S, 58°30'51W, 14 m a.s.l., C. Daneri coll., VIII/1947, R. Ringuélet identified.

MLP 58 (and 91), Argentina, Buenos Aires, La Plata, 34°55'53S, 57°56'56W, 26 m a.s.l., R. Ringuélet identified.

MLP 64 (and 11829), Argentina, Buenos Aires, La Plata, 34°55'53S, 57°56'56W, 26 m a.s.l., 24/IV/1918, R. Ringuélet identified.

MLP 112, Argentina, Buenos Aires, Berisso, Paulino island, 34°52'0S, 57°52'60W, 6 m a.s.l., 28/III/1988.

MLP 28 (and 19), Argentina, Buenos Aires, Opendoor, 34°30'0S, 59°4'60W, 27 m a.s.l., 3/VIII/1949, Bond-Buckup & Buckup identified.

Remarks. Bond-Buckup & Buckup identified (1994: 83, MLP s/n).

MLP 60 (290 and 11881), Argentina, Buenos Aires, La Plata, 34°55'53S, 57°56'56W, 26 m a.s.l., 27/III/1951, Martín coll.

Remarks. R. Ringuelet and Bond-Buckup & Buckup identified (1994: 83).

References

- Bond-Buckup, G. & Buckup, L. (1994) A familia Aeglidae (Crustacea, Decapoda, Anomura). *Arquivos de Zoología*, 32, 159–347.
- Bond-Buckup, G., Jara, C.G., Pérez-Losada, M., Buckup, L. & Crandall, K.A. (2008) Global diversity of crabs (Aeglidae: Anomura: Decapoda) in freshwater. *Hydrobiologia*, 595, 267–273.
- Giri, F. & Loy, A. (2008) Size and shape variation of two freshwater crabs in argentinean Patagonia: the influence of sexual dimorphism, habitat, and species interactions. *Journal Crustacean Biology*, 28(1), 37–45.
- International Code of Zoological Nomenclature (ICZN). (1999) Adopted by International Union of Biological Sciences (IUBS). The International Trust for Zoological Nomenclature c/o The Natural History Museum, London, 306 pp.
- Lopretto, E.C. (1978a) Estructura exosqueletaria y miológica del quinto par de pereopodos del macho de la familia Aeglidae (Crustacea Anomura). *Limnobiología*, 1 (8), 284–298. figs 1–9.
- Lopretto, E.C. (1978b) Las especies de *Aegla* Leach del centro-oeste Argentino en base a la morfología comparada, del quinto par de pereopodos (Crustacea, Anomura, Aeglidae). *Neotropica*, 24(71), 57–68, figs 1–9.
- Lopretto, E.C. (1979) Estudio comparativo del quinto par de pereopodos en los representantes del género *Aegla* de la Patagonia Argentina (Crustacea Anomura). *Neotropica*, 25(73), 9–22, figs 1–8.
- Lopretto, E.C. (1980a) Análisis de las características del quinto pereopodo en las especies de *Aegla* del grupo "*platensis*" (Crustacea Anomura Aeglidae). *Physis seccion B*, 39(96), 37–56, figs. 1–3.
- Lopretto, E.C. (1980b) Clave para la determinación de las especies del género *Aegla* de la República Argentina en base al estudio comparativo del quinto par de pereopodos masculinos (Crustacea Anomura Aeglidae). *Limnobiología*, 1 (10), 431–436, figs 1–3.
- Lopretto, E.C. (1981) Consideraciones sobre la estructura apendicular vinculada al dimorfismo sexual en los machos de las especies de *Aegla* del noroeste Argentino (Crustacea, Anomura, Aeglidae). *Acta Zoológica Lilloana*, 36(2), 15–35, figs 1–13.
- Ringuelet, R. (1948a) Los «cangrejos» del género *Aegla* de Cuyo y la Patagonia. *Revista Museo La Plata 5, Zoología*, 34, 297–347, 3 figs., 25 láms.
- Ringuelet, R. (1948b) Una nueva *Aegla* del nordeste argentino. *Notas Museo La Plata 13, Zoología* 111, 203–208, 3 láms.
- Ringuelet, R. (1949a) Los Anomuros del género *Aegla* del noroeste de la República Argentina. *Revista Museo La Plata 6, Zoología* 4, 1–45, 1 fig., 8 láms.
- Ringuelet, R. (1949b) La prioridad en el estudio biométrico de los Decápodos Anomuros del género *Aegla* Leach. *Notas del Museo de La Plata 14, Zoología* 121, 119–121.
- Ringuelet, R. (1949c) Consideraciones sobre las relaciones filogenéticas entre las especies del género *Aegla* Leach. *Notas del Museo de La Plata 14, Zoología* 120, 111–118.
- Ringuelet, R.A. (1960a) Identificación de los Crustáceos Anomuros del género *Aegla* de la República de Bolivia. *Actas y Trabajos I Congreso Sudamericano de Zoología*, La Plata 2, 345–349.
- Ringuelet, R.A. (1960b) Notas sobre *Aegla* de Argentina y Paraguay (Crust. Decap. Anomura). *Physis* 21 (61), 187–189.
- Schmitt, W.L. (1942) *The species of Aegla, endemic South American fresh water Crustaceans, en Proceedings of the United States National Museum*, 91, 431–520, figs. 40–64, pls. 25–28.
- Schuldt, M., Nuñez, P., Mersing, W., Del Valle, A & Manceñido, M.O. (1988) *Aegla* (Crustacea Anomura) en el Lago Huechulafquen (Neuquén, Argentina) y algunas implicancias filogenéticas para Aeglidae del centro-oeste de Argentina. *Anales de la Sociedad Científica Argentina* 217, 27–37.
- Viau, V.E., López Greco, L.S., Bond-Buckup, G. & Rodríguez, E.M. (2006) Size at the onset of sexual maturity in the anomuran crab, *Aegla uruguayana* (Aeglidae). *Acta Zoologica*, 87, 253–264.