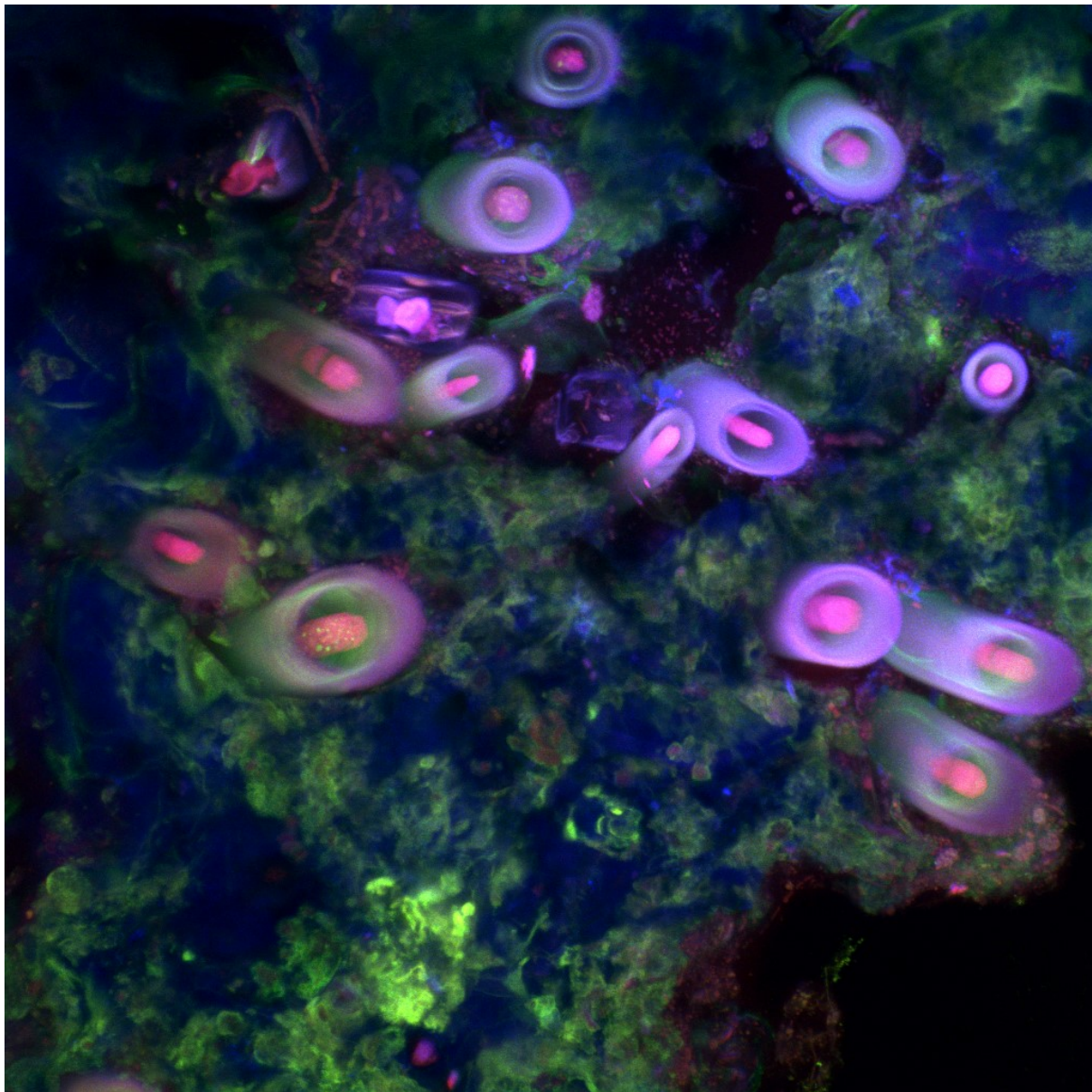




LVI SAIB Meeting - XV SAMIGE Meeting



SAIB-SAMIGE Joint Meeting 2020 – *Online*

***LVI Annual Meeting
Argentine Society for Biochemistry and
Molecular Biology
(SAIB)***

***XV Annual Meeting
Argentinean Society for General Microbiology
(SAMIGE)***

***SAIB-SAMIGE – Online
Joint Meeting 2020***

MEMBERS OF THE SAIB BOARD

María Isabel Colombo

President

Instituto de Histología y Embiología de Mendoza
(IHEM-CONICET)
Facultad de Ciencias Médicas
Universidad Nacional de Cuyo – Mendoza

Eduardo Ceccarelli

Vicepresident

Instituto de Biología Molecular y Celular de Rosario
(IBR-CONICET)
Facultad de Ciencias Bioquímicas y Farmacéuticas
Universidad Nacional de Rosario

Silvia Moreno

Past-President

Instituto de Química Biológica de Facultad de Cs Exactas y Naturales
(IQUIBICEN-CONICET)
Universidad de Buenos Aires

Gabriela Salvador

Secretary

Instituto de Investigaciones Bioquímicas de Bahía Blanca
(INIBIBB-CONICET)
Depto. de Biología, Bioquímica y Farmacia
Universidad Nacional del Sur

Eleonora García Véscovi

Treasurer

Instituto de Biología Molecular y Celular de Rosario
(IBR-CONICET)
Facultad de Ciencias Bioquímicas y Farmacéuticas
Universidad Nacional de Rosario

Federico Sisti

Prosecretary

Instituto de Biotecnología y Biología Molecular
(IBBM-CONICET)
Facultad de Ciencias Exactas
Universidad Nacional de la Plata

Germán Rosano

Protreasurer

Instituto de Biología Molecular y Celular de Rosario
(IBR-CONICET)

Facultad de Ciencias Bioquímicas y Farmacéuticas
Universidad Nacional de Rosario

Eleonora Campos

Auditor

Instituto de Agrobiotecnología y Biología Molecular
(IABIMO-CONICET)

Universidad Nacional de San Martín

Claudia Studdert

Auditor

Instituto de Agrobiotecnología del Litoral
(IAL- CONICET)

Facultad de Bioquímica y Ciencias Biológicas
Universidad Nacional del Litoral

DELEGATES OF SAIB SCIENTIFIC SESSIONS

Cell Biology

Javier Valdez Taubas

Centro de Investigaciones en Química Biológica de Córdoba
(CIQUIBIC-CONICET)

Facultad de Ciencias Químicas
Universidad Nacional de Córdoba

Lipids

Nicolás Favale

Instituto de Química y Fisicoquímica Biológicas
(IQUIFIB-CONICET)

Facultad de Farmacia y Bioquímica
Universidad de Buenos Aires

Plants

José M Estevez

Fundación Instituto Leloir
(FIL-IIBBA CONICET)

Microbiology

Augusto Bellomio

Instituto Superior de Investigaciones Biológicas
(INSIBIO-CONICET)

Facultad de Bioquímica, Química y Farmacia.
Universidad Nacional de Tucumán

Signal Transduction

Vanesa Gottifredi

Fundación Instituto Leloir
(FIL-IIBBA CONICET)

MEMBERS OF THE SAMIGE BOARD

Eleonora García Véscovi

President

Instituto de Biología Molecular y Celular de Rosario
(IBR-CONICET)

Facultad de Ciencias Bioquímicas y Farmacéuticas
Universidad Nacional de Rosario

Andrea Smania

Vicepresident

Centro de Investigaciones en Química Biológica de Córdoba
(CIQUIBIC-CONICET)

Universidad Nacional de Córdoba

Oswaldo Yantorno

Past-President

Centro de Investigación y Desarrollo en Fermentaciones
Industriales

(CINDEFI-CONICET)

Universidad Nacional de La Plata

Claudio Valverde

Secretary

Departamento de Ciencia y Tecnología
Universidad Nacional de Quilmes

Leonardo Curatti

Treasurer

Instituto de Investigaciones en Biodiversidad y Biotecnología
(INBIOTEC-CONICET)
Universidad Nacional de Mar del Plata

Laura Raiger Iustman

Prosecretary

Instituto de Química Biológica de la Facultad de Ciencias Exactas y
Naturales
(IQUIBICEN-CONICET)
Universidad de Buenos Aires

Rosana De Castro

Protreasurer

Instituto de Investigaciones Biológicas
(IIB-CONICET)
Universidad Nacional de Mar del Plata.

Estela Galván

Auditor

Centro de Estudios Biomédicos, Básicos, Aplicados y Desarrollo
(CEBBAD-CONICET)
Universidad Maimónides

María Julia Pettinari

Auditor

Instituto de Química Biológica de la Facultad de Ciencias Exactas y
Naturales
(IQUIBICEN-CONICET)
Universidad de Buenos Aires

SAIB-SAMIGE- Program at a glance

Monday, November 2	Tuesday, November 3	Wednesday, November 4	Thursday, November 5
9:15-9:30 Opening Ceremony			
9:30-10:30 SAIB-SAMIGE Plenary Lecture <i>Rotem Sorek</i>	9:30-11:30 Young Investigators Symposium II	9:30-10:30 CONO SUR Plenary Lecture <i>Dario Zamboni</i>	9:30-11:30 SARS-CoV-2 Symposium
11:00-13:00 Young Investigators Symposium I	12:00-13:00 SEBBM Plenary Lecture <i>Manuel Serrano</i>	11:00-13:00 ROUND TABLE Scientific Policies in Argentina <i>Roberto Salvarezza Ana Franchi Fernando Peirano</i>	12:00-13:00 Closing Ceremony
BREAK	BREAK	BREAK	BREAK
14:00-16:00 Oral Communications <i>Cell Biology I Microbiology I Plants I</i>	14:00-16:00 Oral Communications <i>Biotechnology II Lipids Microbiology III</i>	14:00-16:00 Oral Communications <i>Microbiology IV Enzymology</i>	16:00 SAMIGE ASSEMBLY
BREAK	BREAK	BREAK	
16:30-18:30 Oral Communications <i>Microbiology II Biotechnology I</i>	16:30-18:30 Oral Communications <i>Cell Biology II Plants II Signal Transduction & Structural Biology</i>	16:30-18:30 Oral Communications <i>Cell Biology III Plants III Microbiology V</i>	17:30 SAIB ASSEMBLY
Monday, November 2 - Thursday, November 5			

LI-C02-22
**INTERSECTIONS BETWEEN ALPHA-SYNUCLEIN AND CHOLESTEROL:
AN UNSOLVED CASE**

Alza NP^{1,2}, Salvador GA^{1,3}

¹INIBIBB-CONICET, ²DQ-UNS, ³DBByF -UNS, Bahía Blanca, Argentina. E-mail: natalia.alza@uns.edu.ar

A pathological sign of synucleinopathies, including Parkinson's disease, is the aggregation and fibrillation of α -synuclein (α -syn), a small presynaptic protein characterized by a high lipid binding affinity. How α -syn and cholesterol are interconnected in the context of these neurodegenerative disorders remains an open question. In this work, we investigated cholesterol homeostasis in a neuronal model of α -syn overexpression (WT α -syn cells). We found that both free cholesterol and cholesteryl ester levels were increased by α -syn overexpression. The raise in cholesteryl esters was associated with an increased acyl-CoA:cholesterol acyltransferase activity. While cholesteryl esters were part of the lipid droplet core in WT α -syn cells, free cholesterol was located in membrane compartments and lysosomes. Co-staining experiments revealed that cholesterol was accumulated in lysosomes in cells overexpressing α -syn, though the distribution of these organelles and the expression of lysosomal markers, LAMP-1 and Lysotracker, were not altered. In order to determine the mechanism for the increased cholesterol levels, the status of the transcription factor sterol regulatory element-binding protein (SREBP)-2 was evaluated. SREBP-2 nuclear translocation was induced by α -syn overexpression, in agreement with the *in silico* analysis carried out through the MyProteinNet server (Yeager-Lotem lab). The latter showed a relationship between α -syn and sterol regulatory element-binding gene (SREBF-2). Paradoxically, the activation of SREBP-2 was not accompanied by the expected upregulation of involved canonical downstream genes in cholesterol synthesis, such as 3-hydroxy-3-methylglutaryl-CoA reductase (HMGCR) and 24-dehydrocholesterol reductase. Moreover, cholesterol content was not altered by the inhibition of HMGCR by mevastatin in WT α -syn cells, thus implying that cholesterolgenesis was not responsible for its increase. Our findings suggest that α -syn overexpression disrupts cholesterol trafficking resulting in the lysosomal sequestration and consequent ER transport impairment. Further studies should be performed to ascertain the mechanisms and functional implications of cholesterol uptake and intracellular trafficking alterations associated with synucleinopathies. *Funding: ANPCyT, CONICET, and UNS.*

LI-C03-85
**IMPLICATION OF SPHINGOSINE-1-PHOSPHATE RECEPTOR 2 (S1PR2) IN
DIFFERENTIATION AND DEDIFFERENTIATION OF EPITHELIAL RENAL CELLS**

Romero DJ, Santacreu BJ, Tarallo E, Favale NO

Universidad de Buenos Aires, Facultad de Farmacia y Bioquímica, IQUIFIB-CONICET, Argentina.

E-mail: djromero@docente.ffyb.uba.ar

Epithelial cell differentiation is a process that involves the mesenchymal-epithelial transition (MET) and includes cell cycle arrest, cell-cell junction maturation in addition to changes in cell migration capacity. The epithelial-mesenchymal transition (EMT) is a dynamic process by which fully differentiated epithelial cells can acquire a mesenchymal phenotype. During EMT, cell adhesion and apical-basal polarity are lost, and the cytoskeleton is reorganized. Previous results from our laboratory showed that in Madin-Darby canine kidney cells (MDCK) under different culture conditions can achieve different stages of differentiation resembling MET. Sphingosine 1-phosphate (S1P) is a bioactive sphingolipid, produced by the phosphorylation of sphingosine by sphingosine kinases (SKs), which is involved in different processes such as proliferation, cell growth, differentiation, and migration. S1P can act both intracellularly as a second messenger or extracellularly as a ligand of 5 different G protein-coupled receptors (S1PR1-5). In the present work, we evaluated the importance of S1P acting on S1PR2 in the modulation of MET and EMT. We found that there are differences in the action of S1PR2 in MDCK cells that depends on the differentiation stage. S1PR2 positively modulates the passage from polarized to differentiated cells through MET. Inhibition of S1PR2 blocks adherens junction establishment, as well as apical and basal polarity. On the other hand, once cells have acquired the differentiated phenotype, S1PR2 induces the dedifferentiation of epithelial cells through EMT. Inhibition of S1PR2 triggers changes in EMT markers, such as rearrangements of the actin cytoskeleton, expression of vimentin, and nuclear translocation of beta-catenin, as well as Slug. The expression levels of S1PR2 in the different stages of differentiation of MDCK cells did not show significant differences. Instead, immunofluorescence studies showed that during cell differentiation, S1PR2 was progressively enriched at the plasma membrane. These results suggest that the location of S1PR2 depends on the stage of cell differentiation, and this determines its role. These findings highlight the great versatility of S1P on the control of physiological and pathophysiological processes.

LI-C04-289
**ENDOGENOUSLY SYNTHESIZED SPHINGOSINE-1-PHOSPHATE TRIGGERS CELL
EXTRUSION IN MDCK CELLS**

Santacreu BJ¹, Romero DJ¹, Pescio LG¹, Sterin-Speziale NB², Favale NO¹

¹IQUIFIB-UBA-CONICET, ²LANAIS-PROEM-CONICET. E-mail: bsantacreu@ffyb.uba.ar

One of the mechanisms that ensure epithelial integrity is cell extrusion, a process to remove dying or surplus cells while maintaining the epithelium barrier. This process is triggered by sphingosine-1-phosphate (S1P), which activates S1P receptor