

RESEARCH ARTICLE

A Study of Memory Effects in a Chess Database

Ana L. Schaigorodsky^{1,2*}, Juan I. Perotti³, Orlando V. Billoni^{1,2}

1 Facultad de Matemática, Astronomía, Física y Computación, Universidad Nacional de Córdoba, Ciudad Universitaria, Córdoba, Argentina, **2** Instituto de Física Enrique Gaviola (IFEG-CONICET), Ciudad Universitaria, Córdoba, Argentina, **3** IMT School for Advanced Studies Lucca, Piazza San Francesco 19, I-55100, Lucca, Italy

* schaigorodsky@famaf.unc.edu.ar



OPEN ACCESS

Citation: Schaigorodsky AL, Perotti JI, Billoni OV (2016) A Study of Memory Effects in a Chess Database. PLoS ONE 11(12): e0168213. doi:10.1371/journal.pone.0168213

Editor: Lidia Adriana Braunstein, Universidad Nacional de Mar del Plata, ARGENTINA

Received: May 17, 2016

Accepted: November 7, 2016

Published: December 22, 2016

Copyright: © 2016 Schaigorodsky et al. This is an open access article distributed under the terms of the [Creative Commons Attribution License](https://creativecommons.org/licenses/by/4.0/), which permits unrestricted use, distribution, and reproduction in any medium, provided the original author and source are credited.

Data Availability Statement: Data have been uploaded to Figshare (<https://doi.org/10.6084/m9.figshare.4276523>).

Funding: This work was supported by National Council of Scientific and Technical Research of Argentina (<http://www.conicet.gov.ar/>) Grant number: PIP 112 201101 00213 CONICET, National University of Córdoba Argentina (<http://www.unc.edu.ar/investigacion/financiamiento/subsidios-e-incentivos/parainvestigacion>) Grant Number: 05/B370 2014-2015, and IMT School for Advanced Studies Lucca Project MULTIPLEX nr. 317532. FET Project SIMPOL nr. 610704, FET

Abstract

A series of recent works studying a database of chronologically sorted chess games—containing 1.4 million games played by humans between 1998 and 2007—have shown that the popularity distribution of chess game-lines follows a Zipf’s law, and that time series inferred from the sequences of those game-lines exhibit long-range memory effects. The presence of Zipf’s law together with long-range memory effects was observed in several systems, however, the simultaneous emergence of these two phenomena were always studied separately up to now. In this work, by making use of a variant of the Yule-Simon preferential growth model, introduced by Cattuto et al., we provide an explanation for the simultaneous emergence of Zipf’s law and long-range correlations memory effects in a chess database. We find that Cattuto’s Model (CM) is able to reproduce both, Zipf’s law and the long-range correlations, including size-dependent scaling of the Hurst exponent for the corresponding time series. CM allows an explanation for the simultaneous emergence of these two phenomena via a preferential growth dynamics, including a memory kernel, in the popularity distribution of chess game-lines. This mechanism results in an aging process in the chess game-line choice as the database grows. Moreover, we find burstiness in the activity of subsets of the most active players, although the aggregated activity of the pool of players displays inter-event times without burstiness. We show that CM is not able to produce time series with bursty behavior providing evidence that burstiness is not required for the explanation of the long-range correlation effects in the chess database. Our results provide further evidence favoring the hypothesis that long-range correlations effects are a consequence of the aging of game-lines and not burstiness, and shed light on the mechanism that operates in the simultaneous emergence of Zipf’s law and long-range correlations in a community of chess players.

Introduction

In recent years the scope of statistical physics has been extended to other fields to study, for instance, how humans behave individually or collectively [1–3]. In particular, the struggle of

project DOLFINS nr. 640772 (<https://www.imtlucca.it/>). The funders had no role in study design, data collection and analysis, decision to publish, or preparation of the manuscript.

Competing Interests: The authors have declared that no competing interests exist.

humans when playing games with a well defined set of rules provides a convenient experimental setup to understand human behavior and decision making processes [4–16]. This is particularly convenient from the physics' point of view because, under the rules of a game, the variables of the behavior under study are highly constrained. Moreover, recent studies on game records [9–15] have shown that useful parallels can be established between the statistical patterns of game-based human behavior and well defined theories of physical processes.

The game of chess, which is viewed as a symbol of intellectual prowess, is particularly interesting [5, 17, 18]. There are very large world-wide communities of chess players producing extensive game records providing a source of data suitable for large-scale analyses. Exploring chess databases, Blasius and Tönjes [5] observed that the pooled distribution of chess opening-line weights follows a Zipf law with universal exponent. They explained these findings in terms of an analytical treatment of a multiplicative process. Moreover, in a previous work, where we studied the dynamics of the growth of the game tree, we have found that the emerging Zipf and Heaps laws can be explained in terms of nested Yule-Simon preferential growth processes [17].

The study of long-range correlations and burstiness in systems where Zipf's law is present is also of great research interest [19, 20]. In recent studies, we found that temporal series generated from an empirical and chronologically ordered chess database does exhibit long-range memory effects [18], establishing a striking similarity between chess databases and literary corpora [19]. These memory effects cannot be explained in terms of the multiplicative process, nor in terms of the nested Yule-Simon processes. In this sense, the mechanism for the game aggregation in the database needs new ingredients to reproduce the observed long-range correlations.

In the present work, we investigate how memory effects emerge in a “corpus” of chess games. We tackle this problem following a result of Cattuto et al. [21], who introduced a modification of the Yule-Simon process by incorporating a probabilistic memory kernel. Cattuto's model (CM) introduces memory while preserving the long-tailed frequency distribution characteristic of Zipf's law [19]. However, the nature of the memory effects introduced by the kernel has not been yet explored. Here we show that CM reproduces the statistical properties observed in the chess database since the model does not only exhibit memory, but also long-range correlations and size effects. Moreover, we show that a bursty behavior is associated to individual players, and the most active set of players, but disappears when the full pool of players is analyzed, while long-range correlations prove to be more robust and are found in every analyzed set of games.

This work is divided in three sections. In Section 1 we provide relevant information of the game of chess and the database. We also introduce Cattuto's model, the method for the analysis of long-range correlations and inter-event time distributions. In Section 2 we show and discuss the analysis of the data obtained from both, the generated and real database. Finally, in Section 3 we discuss the contributions of this work.

1 Theoretical background

1.1 Zipf's law in chess

A chess game can usually be divided in three stages, opening, middle-game and endgame. There are many specific openings—move sequences in the opening stage—that are very well documented because they are considered competitively good plays. As a consequence, in a chess database many of the recorded games have their first moves in common. The openings evolve continuously and the complexity of the positions determines their extension. The knowledge of opening-lines is part of the theoretical background of the chess players and how many opening-lines the players know in depth is certainly related to the expertise of the player.

In practice, the extension of the opening stage cannot be precisely defined. In this work we will talk of opening-lines and game-lines to refer to sequences with the same number of moves.

In the game of chess each possible move sequence, or game-line, can be mapped as one directed path in a corresponding game-tree (see Fig 1(a)), where the root node is the initial position of the chess pieces in the board. In the game tree each move is represented by an edge, and there is a one-to-one correspondence between game-lines and nodes. The topological distance between the root and a node is the depth d of the corresponding game-line.

Let us introduce some mathematical notation. A node, or game-line in the tree, is denoted by g . The popularity of a game-line g —i.e. the number of times g appears in the database— is denoted by k_g . In Fig 1(a) we show a partial game-tree where the popularity is represented by the size of the vertices. This tree was computed from ChessDB [22], which contains around 1.4 million chess games played between the years 1998 and 2007. This is the database we use for the rest of the analysis. The number of branches coming out of a node g is denoted by b_g , and the depth of g by d_g . The number of nodes at depth d is denoted by n_d , and corresponds to the number of different game-lines that can be found in the database at depth d . Similarly, N_d is the total number of games of the database that have reached depth $d_g = d$.

An average branching factor, or branching ratio, can be computed at each depth d by using the formula

$$\langle b_d \rangle = \frac{1}{n_d} \sum_{g:d_g=d} b_g = \frac{n_{d+1}}{n_d}, \tag{1}$$

where the summation goes over all existing nodes g at depth d . In practice, the chess database is continuously growing, i.e. new games are incorporated to the database as time evolves. Therefore, all these quantities change with time. For practical reasons, we do not use the real time, but an ordinal time denoted by t . In this sense, $g(t)$ is the game-line associated to the t -th game appearing in the database. Similarly, $k_g(t)$ is the number of those t games that have reached node g , $N_d(t)$ is the number of games that reached depth d and $n_d(t)$ is the number of different game-lines among those $N_d(t)$ games [17].

From the statistical point of view the popularity of a given game-line depends on the number of moves considered, i.e. the depth d of the game. Blasius and Tönjes found that the distribution of popularities follows a power law with an exponent that depends on d . This means that there are few opening-lines which are very popular, and the rest are rarely played. We reproduce these results in Fig 1(b), where the popularity distribution is shown for $d = 1, 2, 3$ and 4, and the curves are fitted using least square linear regression. Clearly, the exponent increases with d , as it was reported [5]. A specific sequence of moves at a certain depth can be thought as a word, a string in algebraic notation, and then the database as a literary corpus where the t -th game would correspond to the t -th word. In this way, analyzing the database at different depths is analogous to analyze different texts, all extracted from the same database, and all with different Zipf's exponents.

The structure of the game-tree also depends on d . In Fig 2 the mean branching ratio is shown as a function of d . The branching ratio quantifies both, the complexity of the game and the memory of the chess players when following the opening-lines. The branching ratio $\langle b_d \rangle$ reaches a value ≈ 1 for $d = 25$, this means that the generation of new branches is negligible from this depth on, marking the beginning of the stage known as middle-game. In Fig 2 we also show the number of different game-lines n_d as function of the depth d . At the beginning of the games, e.g. up to $d = 4$, the number of game-lines followed by the players is relatively small, and a significant number of the players follow the most popular game-line. The statistical complexity of the game is reflected by the branching ratio $\langle b_d \rangle$. Note that $\langle b_d \rangle$ depends on

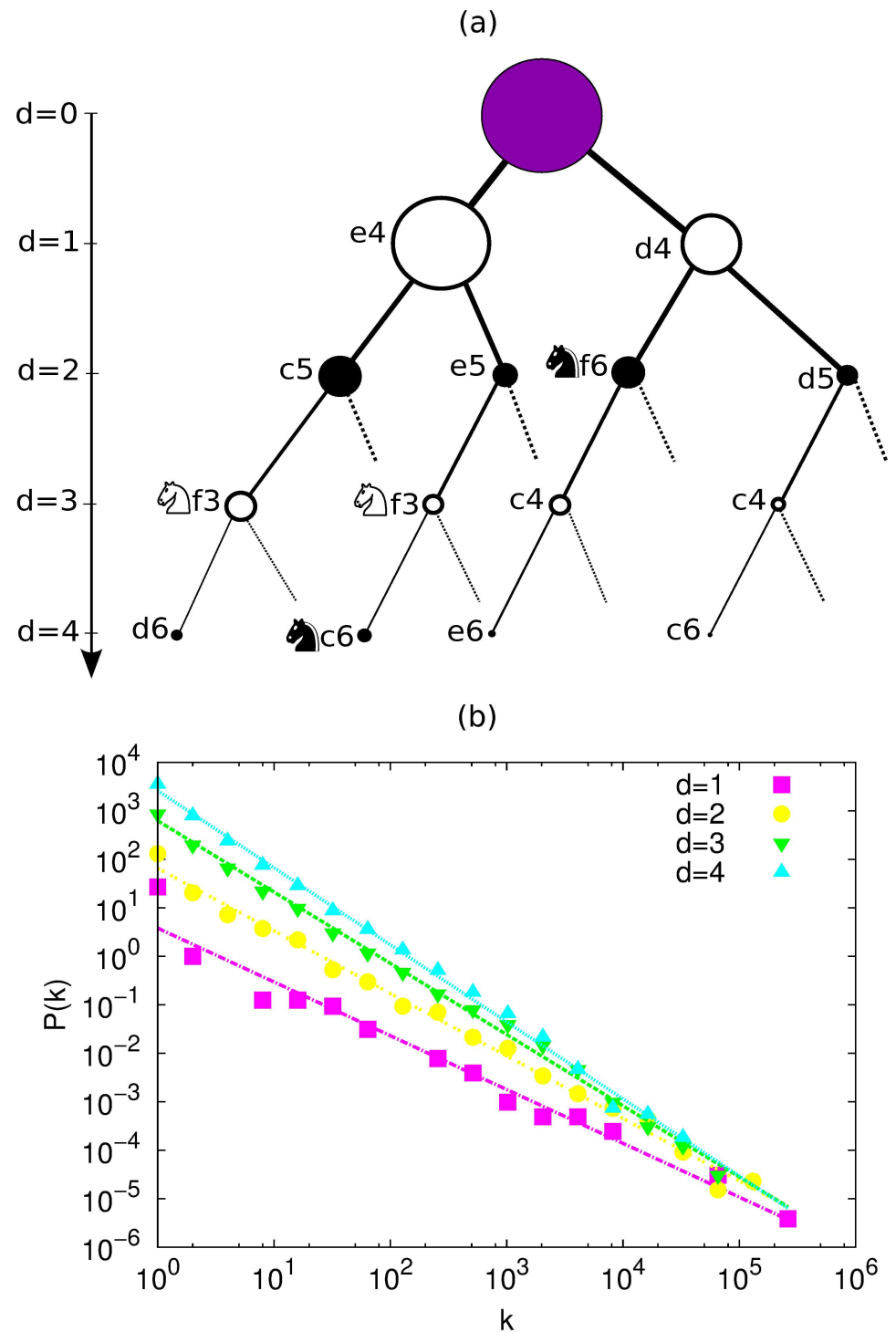


Fig 1. (a) Chess tree corresponding to the main opening-lines up to depth $d=4$. The size of the nodes is proportional to their popularity. Here only the main lines are shown. (b) Distribution of popularities of the nodes at depth $d=1, 2, 3$ and 4 ; these distributions are well fitted by power laws $P(k) \propto k^{-\alpha}$ with $\alpha = 1.10 \pm 0.05, 1.29 \pm 0.03, 1.47 \pm 0.02$ and 1.59 ± 0.02 ($R^2 = 0.972, 0.993, 0.996$ and 0.997), respectively. Errors estimated by the fitting.

doi:10.1371/journal.pone.0168213.g001

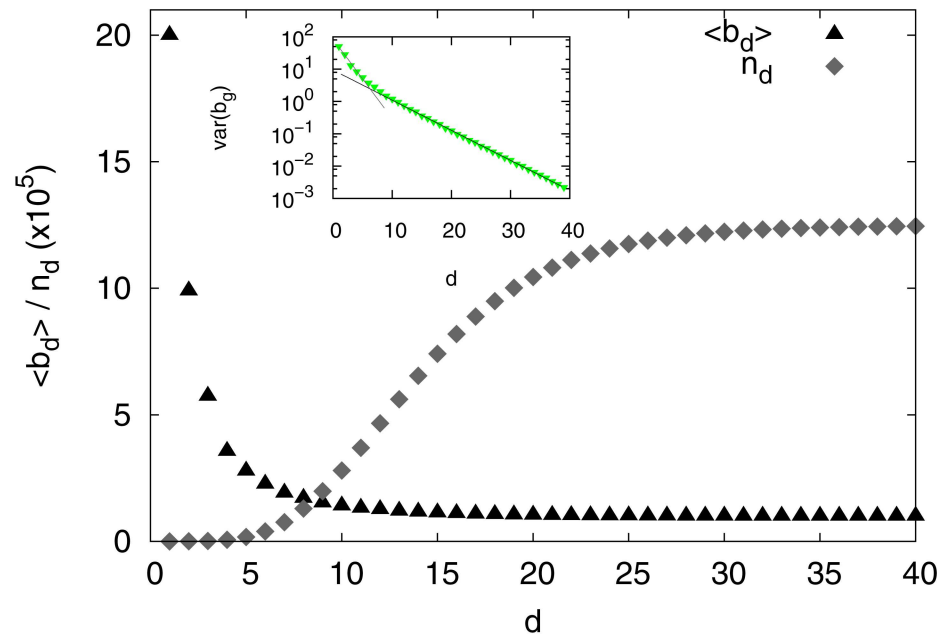


Fig 2. Average branching ratio, $\langle b_d \rangle$ and number of different game-lines n_d as function of the depth level d in the database. Inset: variance of the distribution of branches per node b_d as function of the depth d and linear fit of the two exponential regimes.

doi:10.1371/journal.pone.0168213.g002

the size of the database since new branches are generated as the database grows, and at the same time the popularity range depends on the depth d . Then, at $d = 4$ we can capture both, the memory and the complexity of the game, since the more important opening-lines can be identified at this depth and the branching ratio is still higher than one ($\langle b_d \rangle \approx 3.5$). Also, at this depth the exponent of the popularity distribution is $\alpha < 2$ and then the range in which the popularity spans is more extensive than for higher depths. Computing the distribution of the number of branches generated by each node b_d for different values of the depth d we have found that for lower depths ($d \leq 19$) the distribution is exponential, while for depths beyond $d = 20$ a power law provides a better fit. However, it should be noticed that the range of fit covers around one order of magnitude only and, as a consequence, the power-law fit is not accurate. In Fig 2 (Inset) we show the variance of b_d as a function of the depth. The fluctuations decay exponentially as d increases. Two regimes can be identified and the transition between them is related to the change of regime seen in $\langle b_d \rangle$ and n_d . Therefore, our analysis will be restricted to the 6279 opening-lines of length $d = 4$ found in the database. In particular, we pay special attention to the most popular opening-line—which is: **1 e4 e5 2 ♖f3 ♗c6**—as it represents nearly the 7.8% of the games in the database. The reason for this is that several popular openings have these four initial moves in common. For example: **3 ♘b5** (Ruy Lopez, by far the most popular), **3 ♘c4** (Giuoco piano), **3 d4** (Scotch opening) just to cite a few of them.

1.2 Zipf's law models

One of the first models able to explain the emergence of Zipf's law was introduced by Yule [23], which was devised to explain the emergence of power laws in the distribution of sizes of biological genera. Later on, Simon [24] introduced a similar, but less general, variation of the model [25], which fits more naturally in the context of Zipf's law. It is known as the Yule-

Simon Model (YSM), and different variations re-emerged in the literature several times. The most recent variant, known as preferential attachment, became one of the most important ideas at the beginning of the development of complex networks theory [26]. Cattuto et al. [21] introduced another variant of the YSM, which includes memory effects by incorporating a probabilistic kernel, while at the same time preserving the long-tailed frequency distribution exhibited by the original YSM. The YSM applied to chess game-line generation is as follows. We begin with an initial state of n_0 game-lines, strictly speaking opening-lines at depth d . At each time step t there are two options: i) to introduce a new game-line with probability p or ii) to copy an already existing game-line with probability $\bar{p} = 1 - p$. In the latter case we have to determine which of the previous game-lines is to be copied. Note that since at each time step an opening-line is added, at time t the total number of elements in the constructed database is $N = t + n_0$. The probability of choosing a particular game-line, or opening-line, that has already occurred k times is assumed to be $\bar{p}k\pi(k, t)$, where $\pi(k, t)$ is the fraction of game-lines with popularity k at time t . To fix ideas, let's take $N = 5 \times 10^5$ and 100 different game-lines with popularity k at a time t , then $\pi(k, t) = \frac{100}{5 \times 10^5} = 0.0002$. This means that, in the YSM, copying a certain game-line does not depend on how far back in time the game-line took place, but only on how popular is the corresponding game-line up to the present time t . For this reason, the process does not exhibit long-range memory effects. On the contrary, in CM, the probability of copying a previous game-line depends on how far back in time it occurred for the last time, taking into account the age of the game-line. If the game-line occurred at time $t - \Delta t$, the probability is given by

$$Q(t, \Delta t) = \frac{C(t)}{\tau_c + \Delta t} \tag{2}$$

In Eq (2), τ_c is a time scale in which recently added game-lines have comparable associated probabilities, and it can be considered as a measure of the memory kernel extension. $C(t)$ is a logarithmic normalization factor. The probability distribution density for the popularity of the game-lines that results from this process is [21]:

$$P_{CM}(k) = \frac{p}{(n_0 + pt)(K\alpha)k} \left[\frac{\ln(A/k)}{K} \right]^{\frac{1}{\alpha}-1}, \tag{3}$$

where $\alpha = \bar{p}$, $K = \frac{1-\alpha}{\alpha\Omega}$, $A = e^{Kt\alpha}$ and Ω is a fit parameter. Note that, strictly speaking, the mentioned models do not produce different sequences of moves, but elements that constitute an artificial database with the same distribution as the database. These models are of not use when trying to reconstruct the game tree, but are used to reproduce the statistical properties of the system.

1.3 Time series and correlations

In order to study the long-range correlations of the chronologically ordered set of games in the database, we map the set of game-lines of length $d = 4$ to a discrete time series.

The particular assignation rule that maps the sequence of the 1.4×10^6 games of the database to a time series, can have a direct effect in the degree of persistence observed in the series [27]. Specifically, long-range correlations are affected by both, the intrinsic properties of the database and the mapping code. Therefore, we choose to work with different assignation rules in order to provide robustness to the results. One of these rules, which is introduced in the analysis of literary corpora [19] and was already employed in a chess database [18], is the Popularity Assignation Rule (PAR). In PAR, each element $X(t)$ of the time series corresponds to the popularity at depth d of the t -th game-line in the database over the entire record. In this

work we introduce two more assignation rules for the analysis: the Gaussian Assignation Rule (GAR), and the Uniform Assignation Rule (UAR). GAR and UAR are random assignation rules, where a random number X_g taken from the probability distribution function, Gaussian for GAR and uniform for UAR, is assigned to each game-line g in the database. In this way, the time series is $X(t) = X_{g(t)}$. These random assignation rules are not expected to introduce spurious correlations. Additionally, they have the advantage over PAR that the fluctuations in the values of the time series are bounded; large fluctuations in the values of a time series may induce spurious long-range memory effects [28].

There exists a wide variety of techniques used to detect long-range correlations in time series. However, not all of them are suitable to analyze all kinds of series, especially if they are non-stationary or exhibit underlying trends. Peng et. al. [29] introduced the Detrended Fluctuation Analysis (DFA), a useful technique to detect long-range correlations in time series with non-stationarities. In the DFA method, a cumulated series $Y(i) = \sum_{t=1}^i X(t)$ is segmented into intervals of size ℓ . Each segment s of the cumulated series is fitted to a polynomial $Y_n^{(s)}(i)$ of degree n , and the fluctuation function is obtained with

$$F(\ell) = \sqrt{\frac{1}{Z} \sum_{i=1}^Z [Y(i) - Y_n^{(s)}(i)]^2}. \tag{4}$$

Here, Z is the total number of data points in the time series, and s_i is the segment of the i -th data point. A log-log plot of $F(\ell)$ is expected to be linear. If the slope is less than unity, it corresponds to the Hurst exponent (H). When $H = 0.5$ the cumulated time series, $Y(i)$, resembles a memoryless random walker. On the other hand, for $H > 0.5$ ($H < 0.5$), it resembles a random walker with persistent (anti-persistent) long-range correlations or memory effects.

1.4 Inter-event time analysis

Inter-event time analysis is common to many natural system comprising, earthquakes [30, 31], sunspots [32], neuronal activity [33], and human behavior in general [34, 35]. In particular, the time distribution of the opening-lines in a chess database can be analyzed in a similar manner than the occurrence of words in a text [20]. All the game-lines up to depth d can be enumerated according to its order of appearance in the chronologically ordered database. Specifically, we denote by $t_d \in \{1, 2, \dots, N_d\}$ the sequence of ordinal times of appearance of the different opening-lines of length d . Therefore, the j -th inter-event time of an opening-line g is defined as

$$\tau_j^{(g)} = t_d^{(g)}(j+1) - t_d^{(g)}(j), \tag{5}$$

where $t_d^{(g)}(j)$ represents the time of the j -th appearance of the opening-line g . If the opening-line g occurs with frequency $v_g = N_d^{(g)} / N_d$, we can estimate the average inter-event time as $\langle \tau^{(g)} \rangle \approx 1/v_g$. Here, $N_d^{(g)}$ is the number of times the particular opening-line g of length d occurs in the database. The mean inter-event time $\langle \tau^{(g)} \rangle$ is usually called the Zipf's wavelength in text analysis [20], where g represents a particular word.

The simplest point process for the analysis of inter-event times is the Poisson process. In the context of chess game-lines it can be described as follows. A particular opening-line g occurs with a probability per unit of time equal to μ_g , which we assume to be a constant. As a consequence, the inter-event time distribution for the opening-line g is the exponential distribution $f(\tau^{(g)}) = \mu_g \exp(-\mu_g \tau^{(g)})$. Here, the rate $\mu_g \approx v_g$. The relation is approximate because of two reasons. Firstly, Poisson processes are defined for a continuous time, while for the chess

database we are considering a discrete time. Secondly, the fraction v_g corresponds to a finite number of events, while a Poisson process describes an infinitely large stationary process. Besides this, the approximation $\mu_g \approx v_g$ works well as long as $v_g \ll 1$ and $N_d \gg N_d^{(g)} \gg 1$.

Let us simplify the notation by writing τ instead of $\tau^{(g)}$, when there is no need to speak about a particular game-line g . In the empirical analysis of the data, it is convenient to use the complementary cumulative probability density $F(\tau) = \int_{\tau}^{\infty} f(\tau')d\tau'$ instead of a direct application of the probability density $f(\tau)$. This is for practical reasons; the function $F(\tau)$ is usually simpler than $f(\tau)$. For example, a deviation of $F(\tau)$ from an exponential behavior indicates the presence of memory-effects. In the case of words in a text, this deviation is usually well described by the single parameter stretched exponential distribution, or Weibull function [20],

$$f(\tau) = \frac{\beta}{\tau_0} \left(\frac{\tau}{\tau_0}\right)^{\beta-1} e^{-\left(\frac{\tau}{\tau_0}\right)^\beta}. \tag{6}$$

For this distribution $\langle \tau \rangle = \tau_0 \Gamma\left(\frac{\beta+1}{\beta}\right)$, where Γ is the Gamma function and $0 < \beta \leq 1$. The corresponding cumulative distribution is,

$$F(\tau) = e^{-\left(\frac{\tau}{\tau_0}\right)^\beta}. \tag{7}$$

If β deviates from one, the presence of burstiness in the time series is implied. A burst corresponds to an increase in the activity levels over a short period of time followed by long periods of inactivity [36], and as the value of β approaches zero the appearance of bursts in the time series increases. To test if the cumulative distribution of inter-event times follows or not a stretched exponential, it is useful to plot $-\log(F(\tau))$ as function of τ in a log – log scale [20, 37]. In this plot a stretched exponential becomes a straight line where the slope is the burstiness exponent β .

The deviation of $F(\tau)$ from a Poisson process can also be characterized with the coefficient of variation $\sigma_\tau/\langle \tau \rangle$, where σ_τ is the standard deviation of the inter-event times. We use the coefficient of variation to compute the burstiness parameter B as [36],

$$B = \frac{(\sigma_\tau/\langle \tau \rangle) - 1}{(\sigma_\tau/\langle \tau \rangle) + 1} = \frac{\sigma_\tau - \langle \tau \rangle}{\sigma_\tau + \langle \tau \rangle}. \tag{8}$$

This parameter is greater than zero for a bursty dynamics and less than zero when dynamics becomes regular. When $B = 0$ there is neither burstiness nor regularity.

2 Results

2.1 Fitting the parameters of the models

Let us begin by fitting the model parameters in order to reproduce some basic statistical properties of the database. The parameters to be fitted are: p in the case of the YSM, and p and τ_c for CM. Artificial databases of $N = 10^6$ elements are generated by applying both models' update rules, introduced in Section 1.2, N times.

The appropriate value of the parameter p can be directly estimated from the database by using the formula,

$$p \approx \frac{n_d(t_{\text{total}})}{t_{\text{total}}}. \tag{9}$$

This estimation is only valid as a first approximation since we implicitly assume that p is a constant function of t but, in fact, the number of different game-lines grows in time according to

Table 1. Summary of the results corresponding to the inter-event time distributions of Figs 5 and 6.

Data	p	β	τ_0	$\langle \tau^{(g^*)} \rangle \approx \tau_P$
Database	0.005	0.927 ± 0.003	13.0 ± 0.5	12.82
CM	0.005	1.036 ± 0.002	12.9 ± 0.8	12.41
YSM	0.1	1.031 ± 0.003	15.4 ± 0.6	14.12
YSM	0.005	1.059 ± 0.005	8.2 ± 0.6	7.68
Player	0.09	0.583 ± 0.004	4297 ± 200	89.75

doi:10.1371/journal.pone.0168213.t001

the Heaps' law [17], and not linearly as in Eq (9). However, in order to keep the analysis simple, we choose to work within the approximation of constant p , as this is the case for YSM and CM. For the case of $d = 4$, the estimated value is $p = 0.005$. It is worth mentioning that for larger values of d the approximation of constant p is not as appropriate [17].

To obtain an appropriate value for the parameter τ_c —a parameter of CM only— we vary τ_c until CM is able to reproduce the average inter-event time $\langle \tau^{(g^*)} \rangle$ of the most popular game-line g^* in the database at $d = 4$. Then, provided that p is given by Eq 9, the best approach of CM occurs for $\tau_c = 96$, and for this value CM gives $\langle \tau^{(g^*)} \rangle = 12.41$. Furthermore, the most popular game-line generated by CM, represents the 8.1% of the game-lines; a value close to the empirical one which is 7.8%.

The YSM also provides a prediction for $\langle \tau^{(g^*)} \rangle$. However, when p is given by Eq 9, the prediction is $\langle \tau^{(g^*)} \rangle = 7.68$; a value considerable smaller than the observed in the database. The correct prediction can be obtained anyway, if we set $p = 0.1$, which is a value considerable larger than the obtained from Eq 9. In other words, the YSM is not able to simultaneously fit the empirical values of p and $\langle \tau^{(g^*)} \rangle$, while CM does. This is expected, as CM has an extra fitting parameter.

For comparison, we summarize in Table 1 the different values of p and $\langle \tau^{(g^*)} \rangle$ obtained from the database and the models.

2.2 Comparing the models

After setting the model parameters p and τ_c , we test the models against complementary statistical properties measured to the chess database, such as the popularity distribution and the presence of long-range memory effects.

2.2.1 Popularity distribution. In the following, the parameters of the models are fixed to the values obtained in the previous section. In Fig 3 we show the distribution of popularities $P(k)$ of the YSM, CM and the database (opening-lines of length $d = 4$). The YSM model produces a power-law distribution, with an exponent very close to 2, which is expected in this process for small values of $p (= 0.005)$ [24]. The distribution obtained from CM shows a gentle curvature, and is very well fitted by the theoretical expression of Eq (3). The distribution $P(k)$ of the database is much closer to that obtained with CM than with YSM. A similar popularity distribution can be obtained with the YSM if we relax the restriction where p is given by Eq 9.

2.2.2 Hurst exponent. In order to analyze the presence of long-range correlations, we measured the Hurst exponent (H) of time series derived from the models and the empirical data. The time series are obtained using three different assignation rules: PAR, GAR and UAR, and the Hurst exponent is computed with a linear DFA method (see Section 1). Again, for CM we set the parameters obtained in Section 2.1. It is worth mentioning that long-range correlations are present in time series constructed from the database for depths greater and lower than $d = 4$ [18].

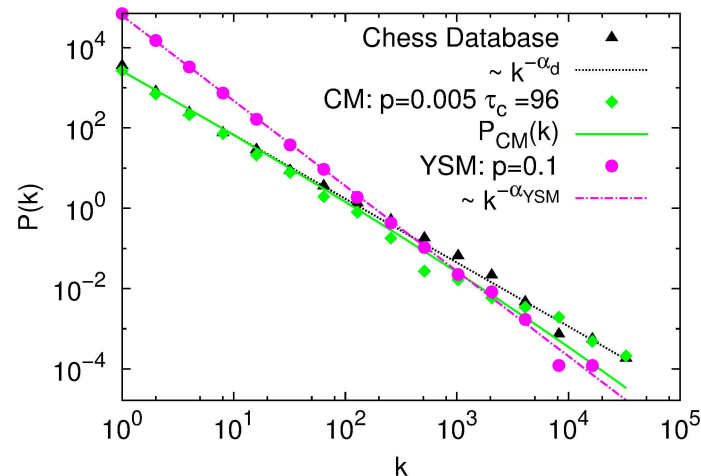


Fig 3. Log-log plot of the distribution of popularities: measured in the database (black triangles), fitted with $P(k) \propto k^{-\alpha}$ and exponent $\alpha_d = 1.59 \pm 0.02$ ($R^2 = 0.997$) (dotted black line); generated with CM, $p = 0.005$ and $\tau_c = 96$ (green diamonds) fitted with $P_{CM}(k)$ (see Eq (3)) with parameter $\Omega = 1.5 \pm 0.3$ (full green line); and generated with YSM model, $p = 0.1$ (magenta circles) and fitted with $P(k)$ and exponent $\alpha_{YSM} = 2.12 \pm 0.03$ ($R^2 = 0.997$) (magenta point dashed line).

doi:10.1371/journal.pone.0168213.g003

Consistently with a lack of long-range time correlations, the Hurst exponent corresponding to the YSM is close to 0.5. Moreover, this result (not shown) is independent of both p and the assignment rule.

In Fig 4(a) we show the Hurst exponent as function of the length of the time series, using the PAR for CM and the database. The time series generated with CM exhibits both, long-range correlations and size effects, behaving similarly to the database. The value of H grows up to 0.69 for the database, and up to a similar value (0.65) in the case of CM. The tendency is different in both cases, while in the database the Hurst exponent becomes large for short time scales, it grows steadily in CM.

As mentioned in Section 1.3, large fluctuations in the values of the time series $X(t)$ might introduce spurious long-range memory effects, i.e. values of H significantly different from 0.5. Since the popularity distribution is long-tailed—in both the model and the empirical database—the PAR rule leads to large fluctuations in the values of $X(t)$. In order to test the influence of these fluctuations we repeated the calculations of H using time shuffled series $X_{shuff}(t)$. The Hurst exponents obtained after the shuffling are very close to 0.5 [18] (not shown), and thus, the large fluctuations in $X(t)$ are not the cause of the observed long-range correlations.

In a similar manner, we can check if the condition $H > 0.5$ persists when the fluctuations in the values of the time series $X(t)$ are bounded. For that purpose, we used the others assignment rules, UAR and GAR, as they lead to time series with finite variance. In Fig 4 we also show the Hurst exponent as a function of the size of the analyzed time series for this two more assignment rules; GAR Fig 4(b) and UAR Fig 4(c). The obtained Hurst exponents are $H > 0.5$ almost everywhere. Therefore, the emergence of long-range correlations is robust against the choice of the assignment rules. In particular, we obtained a nice agreement between the database and CM model when using the GAR. Also, it is worth mentioning that it has been found empirically that DFA tends to be more robust for Gaussian processes [38].

The error bars in Fig 4(a) for the database are the errors resulting from the linear fitting of $F(l)$, while for CM we have computed 10 realizations of the model, and the error bars reflect the dispersion of the calculated values of H . However, in panels (b) and (c), which correspond

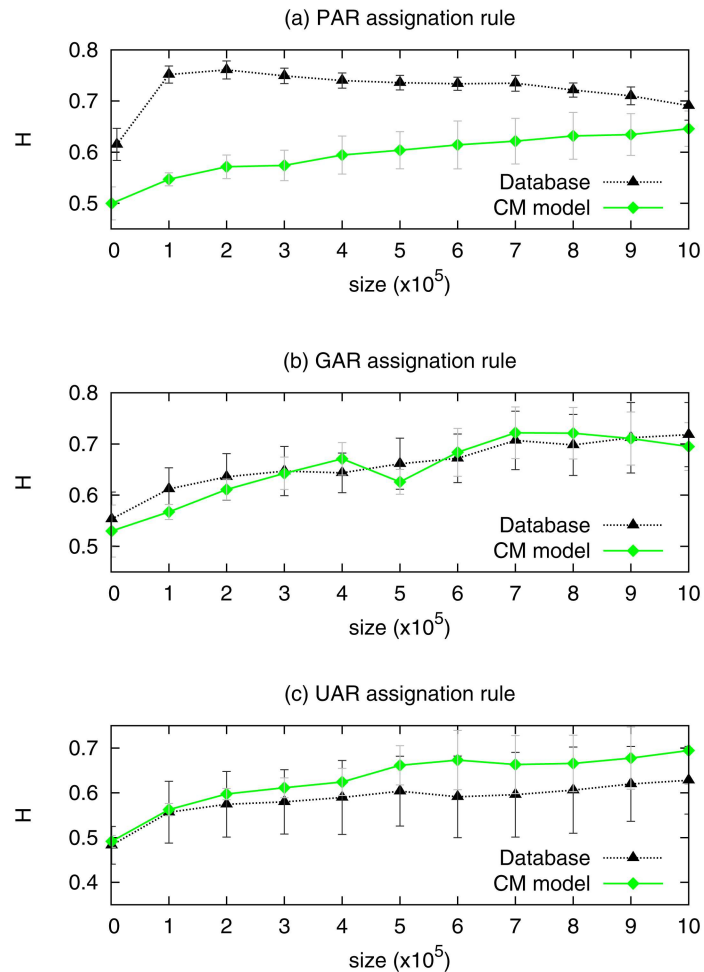


Fig 4. Hurst exponent obtained by the DFA method as a function of the length of the time series in the database (dotted black line with triangles), and generated with CM, $p = 0.005$ and $\tau_c = 96$ (full green line with diamonds): (a) using the PAR; (b) using the GAR; and (c) using the UAR.

doi:10.1371/journal.pone.0168213.g004

to the GAR and UAR, we estimated the errors using 10 different random assignments for each UAR and GAR, for both CM and the database. The different assignment rules lead to different values of the Hurst exponent; both, in the model and in the database. This implies that the existence of long-range correlations is a robust feature from a qualitative point of view but, the Hurst exponent is not a quantity independent of the assignment rule used to produce the time series.

2.3 Burstiness

In this subsection, we study another aspect of the existence of non-trivial memory effects, regarding the occurrence of specific opening-lines in the chess database. Namely, we analyze the existence of burstiness by following ideas used in the analysis of texts [20].

Before continuing, we remark a couple of issues. First, our calculations assume that the games in the database are uniformly distributed across the time line. Our results indicate this assumption is correct. Second, although the games in the chess database are chronologically ordered, the time resolution of the database is one day, with an average of about ≈ 3600 games

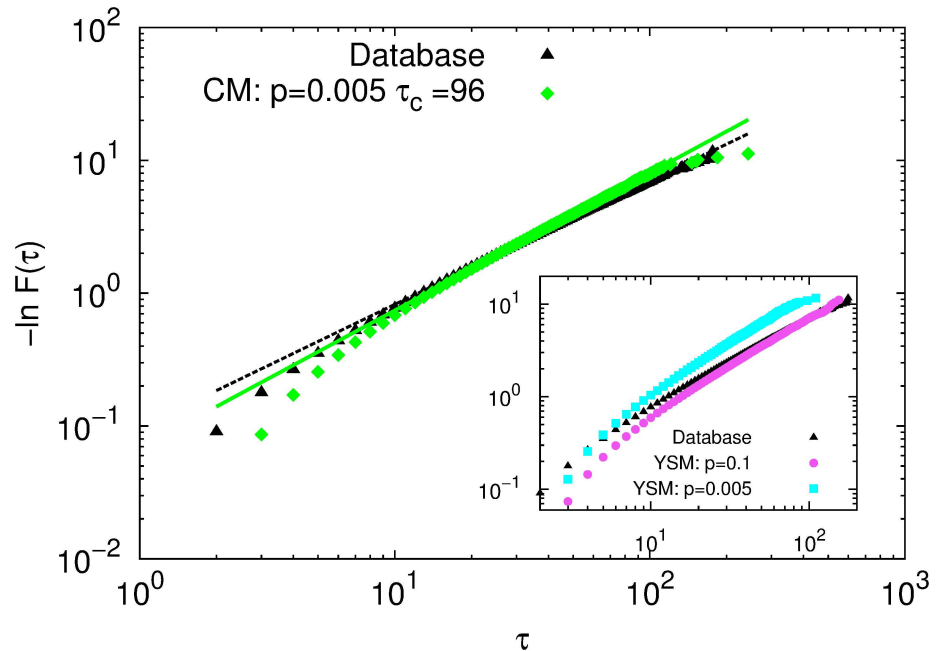


Fig 5. Cumulative distribution of inter-event times of the most popular opening-line measured in the database (black triangles) and generated with CM for $p = 0.005$ and $\tau_c = 96$ (green diamonds). The lines are fits according to Eq (7) with $\beta = 0.927 \pm 0.003$ ($R^2 = 0.999$) for the database (black dashed line) and for CM with $\beta = 1.035 \pm 0.003$ ($R^2 = 0.999$) (green full line). Inset: cumulative frequency distribution of inter-event times measured in the database (black triangles), YSM for $p = 0.1$ (magenta circles) and $p = 0.005$ (cyan squares).

doi:10.1371/journal.pone.0168213.g005

per day which are randomly shuffled. For this reason, we expect the sequence of inter-event times τ to be uncorrelated at the short scale of t .

2.3.1 Complete database. We begin the study of burstiness by analyzing the activity of the most popular opening-line, involving the whole pool of players. We study both the database and the models.

We analyze the cumulated inter-event times distribution $F(\tau)$ (see 1.4) corresponding to the most popular opening-line at depth $d = 4$. In Fig 5, we plot $-\ln F(\tau)$ as function of τ in a log – log scale for the case of the empirical database. Analogous plots for CM and YSM (Inset) are also shown. All cases display a linear regime, admitting a good fit of the Weibull distribution of Eq 7. The exponent of the Weibull and the burstiness parameter results $\beta \approx 1$ and $B \approx 10^{-2}$, respectively, in all cases, indicating the absence of burstiness. The linear regime was estimated by eliminating points from both ends of the curve $-\ln F(\tau)$ and doing a linear regression for each subset, until the coefficient of determination R^2 reached a stable value with a tolerance of 10^{-4} .

Because there is no burstiness, the other parameter of the Weibull distribution, τ_0 , should fit to the characteristic time τ_p of an associated Poisson process. We corroborated this by computing a simple approximation, derived for the YSM, but which also works for CM. In the YSM model, the probability P_t that an already existing game-line g is repeated between times t and $t + \delta t$, is given by $P_t \approx ((1 - p)N_d^{(g)}(t)/N_d(t))\delta t$, where $N_d^{(g)}(t)$ is number of game-lines g up to depth d that have been played until time t (see 1.4). After a transient time, $N_d^{(g)}/N_d$ is expected to be nearly constant—to be precise, a slowly varying quantity—. Therefore, $P_t = \delta t/\tau_p$, where $\mu := 1/\tau_p \approx (1 - p)N_d^{(g)}/N_d$ is the event rate of the mentioned Poisson

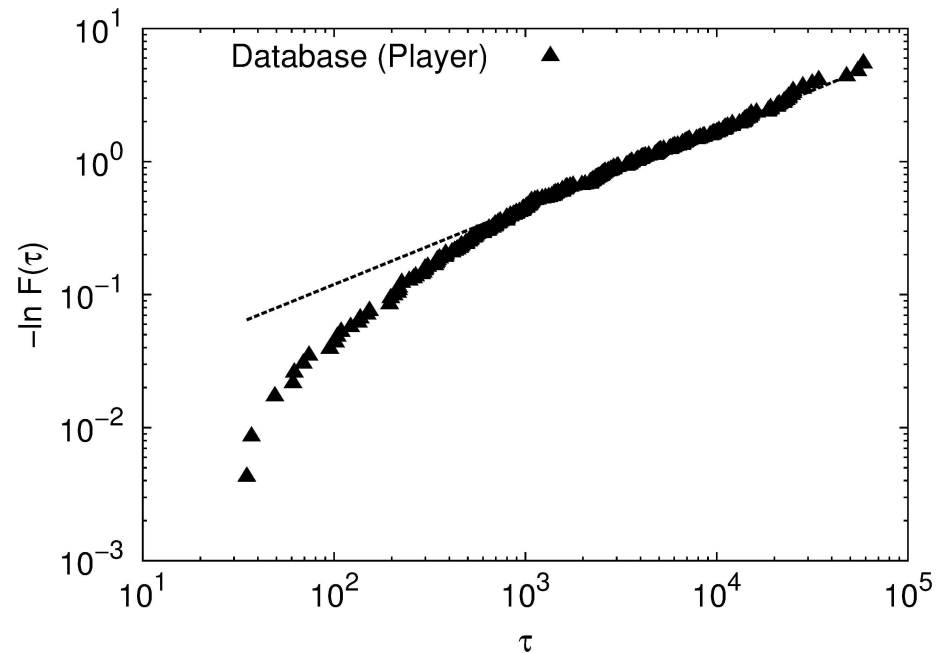


Fig 6. Cumulated inter-event time distribution for a single player (black triangles). Also, corresponding fits according to Eq (7) with $\beta = 0.583 \pm 0.004$ ($R^2 = 0.993$) for the player (black dashed line).

doi:10.1371/journal.pone.0168213.g006

process, and

$$\tau_p \approx \frac{N_d(t_{total})}{N_d^{(g)}(t_{total})(1-p)} \tag{10}$$

the corresponding characteristic time. Here, t_{total} is the number of games in the whole database. As summarized in Table 1, it is clear that there is a good agreement between the fit τ_0 and the estimation τ_p .

2.3.2 Single player analysis. According to the results of previous sections, the inter-event times of the most popular game-line indicate a slight, or absence, of burstiness when the whole pool of players is considered. In order to shed light on this point, we analyze if there is burstiness in the activity of the game-lines of a single player.

For this analysis, we choose the most active player in the database, who has played 1377 games. We keep the original time indices. The measured value of p for this player is equal to 0.09. In Fig 6 we show the cumulated inter-event time distribution for the most popular opening-line according to this player. The fitted slope of the linear regime is $\beta = 0.583 \pm 0.004$ and the burstiness parameter is $B = 0.22$, indicating the presence of a bursty activity. Also, the values obtained for τ_0 from the fitting of Eq (7) and τ_p from Eq (10) are very different (see Table 1). As a consequence, a Poisson process is not a good approximation for the inter-event time distribution of the single player.

As we already showed, CM does not generate burstiness, hence we cannot reproduce the results of a single player with this model.

2.3.3 Data aggregation. We also studied the bursty behavior during data aggregation. We grew the database in two ways, by player aggregation, and by chronological game aggregation. In the first case, we ordered the players according to the number of games they have in the database; from most active to least active. We grew the database adding groups of players, each

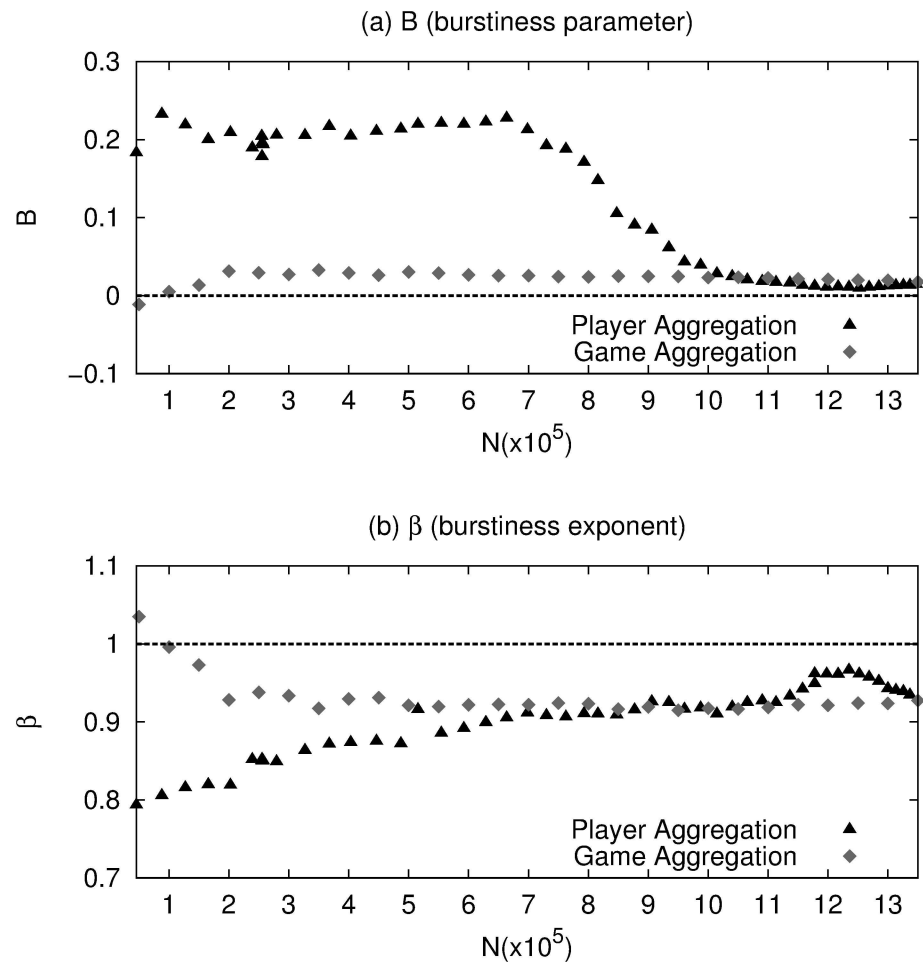


Fig 7. (a) Burstiness parameter B and (b) burstiness exponent β as a function of the length of the time series for the database growing by Player Aggregation (black triangles) and by chronological game aggregation (gray diamonds). The error bars are not shown because they are of the same size as the points.

doi:10.1371/journal.pone.0168213.g007

group representing 5×10^4 games, until we completed the full database. In this way, the most active players are included first during the growing process. In the second case, game-lines were added chronologically in sets of size 5×10^4 games, also until the whole database is completed. For these two data aggregation processes we calculated the burstiness parameter B and the burstiness exponent β . The resulting values as function of the size of the database are shown in Fig 7. In this figure, it is noticeable that the points in the players aggregation are not uniformly distributed across the time scale. This is because when we add new players, many of the games played by them are already in the growing database if the opponents involved in the games were already added. The effect is more significant when the growing database reaches a considerable size.

The analysis of Fig 7 reveals that for both, player and game aggregation, β and B , stabilize to the values of the complete database, meaning that in both cases the burstiness disappears at some point. Notice, however, they reach the final value at different times. Under game aggregation, the values stabilize at approximately 2×10^5 while under player aggregation, the values stabilize much later. This is a new indication that the bursty dynamics in the whole database is

related to the behavior of individual players. In fact, during the chronological game aggregation, the incorporation of a small number of game-lines (the first 5×10^4) is already sufficient to include a relatively large fraction of players (around 12% of the total). This is the reason for which the bursty behavior disappears at a short time scale under game aggregation. In player aggregation, however, we have 57 players in the first set, and the burstiness stabilizes when the number of players is ≈ 1000 , which corresponds to 10^6 games. The remaining 4×10^5 game-lines correspond to players with few games—most of them with less than ten—. These players cannot exhibit burstiness by themselves and therefore erase the bursty behavior in the database. Finally, we have checked that all players with an extensive record of games exhibit a bursty dynamics.

3 Discussion

In this work we analyzed a chess database that exhibit a power law popularity distribution of the opening lines and long-range correlations in the aggregation of new games during the growth process of the database. As a complementary test of the memory present in the database we also looked for the presence of a bursty dynamics in the apparition of the most popular opening-line.

We have analyzed the database within the framework of two models based on a preferential grow mechanism, Yule-Simon Model (YSM) and Cattuto's Model (CM), since both models allow to generate artificial databases for opening-lines with power law distribution. In particular, the model proposed by Cattuto et al. includes a memory kernel to this process. Our analysis demonstrates that both models can reproduce to a certain extent the popularity distribution obtained from the chess database, but CM seems to be more realistic since it reproduces the power law distribution of opening-lines using the measured value for the probability of introducing a new opening-line. In addition, due to the memory kernel, we show that CM is also able to reproduce the long-range correlations and size effects observed in the database while, as expected, YSM lacks memory. Finally, neither CM or YSM generate a bursty dynamics, for this reason CM is adequate to model the whole database but not to analyze this specific dynamic in individual players.

Specifically, we showed that the popularity distribution of opening-lines at depth $d = 4$ is well described by CM using the parameters p measured in the database, and τ_c determined by the fitting of the mean inter-event time of the most popular opening-line. YSM reproduces this popularity distribution but using a value of p that is much greater than the measured value. Furthermore, CM exhibits long-range correlation and size effects, independently of the assignation rule used to construct the time series, though the degree of persistence does depend on the assignation. In particular, CM reproduces the size effects and persistence observed in the database when the Gaussian Random Assignation rule (GAR) is used. This suggests that there are some underlying correlations relating the popularity of chess game-lines and the corresponding generated time series, which are not captured by CM.

Furthermore, we found from the fit of the cumulated inter-event time distribution of the complete chess database—using the most popular opening-line—that we cannot assure the presence of burstiness. The exponent of the Weibull distribution is essentially one ($\beta = 0.927$) and, therefore, the dynamics can be well approximated by a Poisson process. This is validated further using the burstiness parameter since $B \approx 10^{-2}$ and also because the fitted value of τ_0 (see Eq (7)) and the computed value of τ_p (see Eq (10)) are very similar. In addition, since the inter-event times of both CM and YSM are also well described by a Poisson process, then the inter-event times of the database can be reproduced using both models. The lack of burstiness in CM suggests that burstiness phenomena—which is frequently used to explain the emergence

of long-range memory effects— may play a marginal role in the presence of long-range correlation effects. Instead, long-range correlations emerge due to the aging of game-lines as database grows.

Although the behavior of the complete set of players does not exhibit bursty behavior, the analysis of the inter-event times of individual players, provided that they have a sufficient long number of played games, does have bursty behavior. This indicates that the lack of burstiness at the group level is a consequence of the aggregation of the data. The two growing mechanisms tested in this work, player aggregation and game aggregation confirm this idea, since the first preserves burstiness in a much longer time scale than the second. This may be due to underlying correlations between players, e.g. the two contenders in a game tend to have similar ELO rankings, and then the game-lines are necessarily correlated.

Concluding, the long-range memory observed in the opening-lines of the growing chess database can be well described with CM. However, new ingredients are necessary to explain the bursty dynamics present in some growing stages of the database and in individual players. Moreover, further studies are necessary to test the implications of the memory kernel in the mechanism of the database generation.

Acknowledgments

This work was partially supported by grants from CONICET (PIP 112 201101 00213), SeCyT–Universidad Nacional de Córdoba (Argentina) J.L.P acknowledges support from: FET IP Project MULTIPLEX nr. 317532. FET Project SIMPOL nr. 610704, FET project DOLFINS nr. 640772.

Author Contributions

Conceptualization: ALS JIP OVB.

Data curation: ALS JIP.

Formal analysis: ALS JIP OVB.

Funding acquisition: OVB.

Investigation: ALS JIP OVB.

Methodology: ALS JIP OVB.

Project administration: OVB.

Resources: ALS JIP OVB.

Software: ALS JIP.

Supervision: OVB.

Validation: ALS.

Visualization: ALS.

Writing – original draft: ALS JIP OVB.

Writing – review & editing: ALS JIP OVB.

References

1. Watts DJ. A twenty-first century science. *Nature*. 2007; 445(7127):489–489. doi: [10.1038/445489a](https://doi.org/10.1038/445489a) PMID: [17268455](https://pubmed.ncbi.nlm.nih.gov/17268455/)

2. Lazer D, Pentland AS, Adamic L, Aral S, Barabási AL, Brewer D, et al. Life in the network: the coming age of computational social science. *Science (New York, NY)*. 2009; 323(5915):721.
3. Castellano C, Fortunato S, Loreto V. Statistical physics of social dynamics. *Reviews of modern physics*. 2009; 81(2):591. doi: [10.1103/RevModPhys.81.591](https://doi.org/10.1103/RevModPhys.81.591)
4. Prost F. On the Impact of Information Technologies on Society: an Historical Perspective through the Game of Chess. In: Voronkov A, editor. *Turing-100*. vol. 10 of EPIC Series. EasyChair; 2012. p. 268–277.
5. Blasius B, Tönjes R. Zipf's Law in the Popularity Distribution of Chess Openings. *Phys Rev Lett*. 2009; 103:218701. doi: [10.1103/PhysRevLett.103.218701](https://doi.org/10.1103/PhysRevLett.103.218701) PMID: [20366071](https://pubmed.ncbi.nlm.nih.gov/20366071/)
6. Ribeiro HV, Mendes RS, Lenzi EK, del Castillo-Mussot M, Amaral LAN. Move-by-Move Dynamics of the Advantage in Chess Matches Reveals Population-Level Learning of the Game. *PLoS ONE*. 2013; 8(1):e54165. doi: [10.1371/journal.pone.0054165](https://doi.org/10.1371/journal.pone.0054165) PMID: [23382876](https://pubmed.ncbi.nlm.nih.gov/23382876/)
7. Sigman M, Etchemendy P, Slezak DF, Cecchi GA. Response Time Distributions in Rapid Chess: A Large-Scale Decision Making Experiment. *Frontiers in Neuroscience*. 2010; 4:1. doi: [10.3389/fnins.2010.00060](https://doi.org/10.3389/fnins.2010.00060) PMID: [21031032](https://pubmed.ncbi.nlm.nih.gov/21031032/)
8. Chassy P, Gobet F. Measuring Chess Experts' Single-Use Sequence Knowledge: An Archival Study of Departure from 'Theoretical' Openings. *PLoS ONE*. 2011; 6(11). doi: [10.1371/journal.pone.0026692](https://doi.org/10.1371/journal.pone.0026692) PMID: [22110590](https://pubmed.ncbi.nlm.nih.gov/22110590/)
9. Sire C, Redner S. Understanding baseball team standings and streaks. *The European Physical Journal B*. 2009; 67(3):473–481. doi: [10.1140/epjb/e2008-00405-5](https://doi.org/10.1140/epjb/e2008-00405-5)
10. de Saá Guerra Y, González JMM, Montesdeoca SS, Ruiz DR, García-Rodríguez A, García-Manso JM. A model for competitiveness level analysis in sports competitions: Application to basketball. *Physica A: Statistical Mechanics and its Applications*. 2012; 391(10):2997–3004. doi: [10.1016/j.physa.2012.01.014](https://doi.org/10.1016/j.physa.2012.01.014)
11. Petersen AM, Jung WS, Stanley HE. On the distribution of career longevity and the evolution of home-run prowess in professional baseball. *EPL (Europhysics Letters)*. 2008; 83(5):50010. doi: [10.1209/0295-5075/83/50010](https://doi.org/10.1209/0295-5075/83/50010)
12. Bittner E, Nußbaumer A, Janke W, Weigel M. Football fever: goal distributions and non-Gaussian statistics. *The European Physical Journal B*. 2009; 67(3):459–471. doi: [10.1140/epjb/e2008-00396-1](https://doi.org/10.1140/epjb/e2008-00396-1)
13. Ben-Naim E, Redner S, Vazquez F. Scaling in tournaments. *EPL (Europhysics Letters)*. 2007; 77(3):30005. doi: [10.1209/0295-5075/77/30005](https://doi.org/10.1209/0295-5075/77/30005)
14. Heuer A, Rubner O. Fitness, chance, and myths: an objective view on soccer results. *The European Physical Journal B*. 2009; 67(3):445–458. doi: [10.1140/epjb/e2009-00024-8](https://doi.org/10.1140/epjb/e2009-00024-8)
15. Ribeiro HV, Mukherjee S, Zeng XHT. Anomalous diffusion and long-range correlations in the score evolution of the game of cricket. *Phys Rev E*. 2012; 86:022102. doi: [10.1103/PhysRevE.86.022102](https://doi.org/10.1103/PhysRevE.86.022102) PMID: [23005806](https://pubmed.ncbi.nlm.nih.gov/23005806/)
16. Xu LG, Li MX, Zhou WX. Weiqi games as a tree: Zipf's law of openings and beyond. *EPL (Europhysics Letters)*. 2015; 110(5):58004. doi: [10.1209/0295-5075/110/58004](https://doi.org/10.1209/0295-5075/110/58004)
17. Perotti JI, Jo HH, Schaigorodsky AL, Billoni OV. Innovation and nested preferential growth in chess playing behavior. *EPL (Europhysics Letters)*. 2013; 104(4):48005. doi: [10.1209/0295-5075/104/48005](https://doi.org/10.1209/0295-5075/104/48005)
18. Schaigorodsky AL, Perotti JI, Billoni OV. Memory and long-range correlations in chess games. *Physica A: Statistical Mechanics and its Applications*. 2014; 394(0):304–311. doi: [10.1016/j.physa.2013.09.035](https://doi.org/10.1016/j.physa.2013.09.035)
19. Montemurro MA, Pury PA. Long-range Fractal Correlations in Literary Corpora. *Fractals*. 2002; 10(04):451–461. doi: [10.1142/S0218348X02001257](https://doi.org/10.1142/S0218348X02001257)
20. Altmann EG, Pierrehumbert JB, Motter AE. Beyond Word Frequency: Bursts, Lulls, and Scaling in the Temporal Distributions of Words. *PLoS ONE*. 2009; 4(11):e7678. doi: [10.1371/journal.pone.0007678](https://doi.org/10.1371/journal.pone.0007678) PMID: [19907645](https://pubmed.ncbi.nlm.nih.gov/19907645/)
21. Cattuto C, Loreto V, Servedio VDP. A Yule-Simon process with memory. *EPL (Europhysics Letters)*. 2006; 76(2):208.
22. Schaigorodsky AL, Perotti JI. Chess databases; 2016 [Cited 2016 Dec 2]. Database: figshare [Internet]. Available from: https://figshare.com/articles/Chess_Database/4276523
23. Yule GU. A Mathematical Theory of Evolution, Based on the Conclusions of Dr. J. C. Willis, F.R.S. *Philosophical Transactions of the Royal Society of London Series B, Containing Papers of a Biological Character*. 1925; 213(402–410):21–87. doi: [10.1098/rstb.1925.0002](https://doi.org/10.1098/rstb.1925.0002)
24. Simon HA. On a class of skew distribution functions. *Biometrika*. 1955; 42(3–4):425–440. doi: [10.1093/biomet/42.3-4.425](https://doi.org/10.1093/biomet/42.3-4.425)
25. Simkin MV, Roychowdhury VP. Re-inventing willis. *Physics Reports*. 2011; 502(1):1–35. doi: [10.1016/j.physrep.2010.12.004](https://doi.org/10.1016/j.physrep.2010.12.004)

26. Barabási AL, Albert R. Emergence of Scaling in Random Networks. *Science*. 1999; 286(5439):509–512. PMID: [10521342](#)
27. Amit M, Shmerler Y, Eisenberg E, Abraham M, Shnerb N. Language and codification dependence of long-range correlations in texts. *Fractals*. 1994; 02(01):7–13.
28. Barunik J, Kristoufek L. On Hurst exponent estimation under heavy-tailed distributions. *Physica A: Statistical Mechanics and its Applications*. 2010; 389(18):3844–3855. doi: [10.1016/j.physa.2010.05.025](#)
29. Peng CK, Buldyrev SV, Goldberger AL, Havlin S, Sciortino F, Simons M, et al. Long-range correlations in nucleotide sequences. *Nature*. 1992; 356(6365):168–170. doi: [10.1038/356168a0](#) PMID: [1301010](#)
30. Bak P, Christensen K, Danon L, Scanlon T. Unified Scaling Law for Earthquakes. *Phys Rev Lett*. 2002; 88:178501. doi: [10.1103/PhysRevLett.88.178501](#) PMID: [12005787](#)
31. Corral A. Long-Term Clustering, Scaling, and Universality in the Temporal Occurrence of Earthquakes. *Phys Rev Lett*. 2004; 92:108501. doi: [10.1103/PhysRevLett.92.108501](#) PMID: [15089251](#)
32. Wheatland MS, Sturrock PA, McTiernan JM. The Waiting-Time Distribution of Solar Flare Hard X-Ray Bursts. *The Astrophysical Journal*. 1998; 509(1):448. doi: [10.1086/306492](#)
33. Keat J, Reinagel P, Reid RC, Meister M. Predicting Every Spike: A Model for the Responses of Visual Neurons. *Neuron*. 2001; 30(3):803–817. doi: [10.1016/S0896-6273\(01\)00322-1](#) PMID: [11430813](#)
34. Barabási AL. The origin of bursts and heavy tails in human dynamics. *Nature*. 2005; 435(7039):207–211. doi: [10.1038/nature03459](#) PMID: [15889093](#)
35. Jo HH, Perotti JI, Kaski K, Kertesz J. Correlated bursts and the role of memory range. *arXiv preprint arXiv:150502758*. 2015; doi: [10.1103/PhysRevE.92.022814](#) PMID: [26382461](#)
36. Goh KI, Barabasi AL. Burstiness and memory in complex systems. *EPL (Europhysics Letters)*. 2008; 81(4):48002. doi: [10.1209/0295-5075/81/48002](#)
37. Bunde A, Eichner JF, Kantelhardt JW, Havlin S. Long-Term Memory: A Natural Mechanism for the Clustering of Extreme Events and Anomalous Residual Times in Climate Records. *Phys Rev Lett*. 2005; 94:048701. doi: [10.1103/PhysRevLett.94.048701](#) PMID: [15783609](#)
38. Bryce RM, Sprague KB. Revisiting detrended fluctuation analysis. *Scientific Reports*. 2012; 2(315):1–6. doi: [10.1038/srep00315](#) PMID: [22419991](#)