

NOTAS SOBRE
MAMÍFEROS
SUDAMERICANOS

●



Sociedad Argentina para el Estudio de los Mamíferos



Case reports of common vampire bats *Desmodus rotundus* (Chiroptera: Phyllostomidae: Desmodontinae) attacking wild exotic mammals in Argentina

Laura M. Calfayan (1), Guido Bonnot (2) e Isabel E. Gómez Villafañe (1)

(1) Laboratorio de Ecología de Poblaciones. Instituto de Ecología, Genética y Evolución de Buenos Aires (UBA-CONICET). Facultad de Ciencias Exactas y Naturales, Universidad de Buenos Aires, Buenos Aires, Argentina.

(2) Parque Nacional El Palmar, Administración de Parques Nacionales, Ubajay, Entre Ríos, Argentina. [correspondencia: isabelgv@ege.fcen.uba.ar]

ABSTRACT

We present evidence of common vampire bats *Desmodus rotundus* (É. Geoffroy Saint-Hilaire, 1810) attacking two wild exotic mammals; the wild pig *Sus scrofa* (Linnaeus, 1758) and the chital deer *Axis axis* (Erxleben, 1777). Observations were made in El Palmar National Park, Entre Ríos province (Argentina) using camera traps. To our knowledge, this is the first report documenting attacks of vampire bats to exotic wild mammals in Argentina.

RESUMEN

Presentamos evidencias sobre murciélagos vampiros comunes *Desmodus rotundus* (É. Geoffroy St.-Hilaire, 1810) atacando a dos mamíferos exóticos salvajes; el jabalí *Sus scrofa* (Linnaeus, 1758) y el ciervo *Axis axis* (Erxleben, 1777). Las observaciones se realizaron en el Parque Nacional El Palmar, Provincia de Entre Ríos (Argentina) mediante cámaras trampa. Este es el primer reporte que documenta el ataque de murciélagos vampiros a mamíferos salvajes exóticos en Argentina.

The common vampire bat (*Desmodus rotundus*) is a hematophagous bat distributed from northern Mexico to Uruguay, and the center of Chile and Argentina (Koopman 1988; Barquez et al. 1999; Delpietro et al. 2017). Domestic livestock introduced during the European colonization of America gave the vampire a more abundant and accessible source of food than wild native animals which enabled population increases throughout its range (Greenhall 1971). At present, *D. rotundus* is abundant in areas with livestock, feeding mostly on cattle, horses, goats, pigs and sheep, and to a lesser extent poultry, wild mammals and humans (Greenhall et al. 1983; Voigt & Kelm 2006; Delpietro et al. 2009; Moya et al. 2015; Streicker & Allgeier 2016). *Desmodus rotundus* poses a threat to livestock, human health and wild mammals due to the direct damage

Recibido 4 de julio de 2018. Aceptado 6 de noviembre de 2018. Editor asociado: M. Sánchez.



of their bites, and as reservoir for rabies. Every year outbreaks of rabies transmitted by vampires kill thousands of cattle, dozens of people, and an unknown quantity of wild herbivores (Delpietro et al. 2009, 2017; Johnson et al. 2014; Streicker & Allgeier 2016). In Argentina, vampire attacks on people are sporadic occurring mainly in sylvatic areas without livestock, and in areas where cattle from which bats fed was removed (Delpietro & Russo 1996; Senasa 2011). Reports of *D. rotundus* attacks and its bites on native or introduced wild species are not abundant, and were recorded in Argentina on marsh deer (*Blastocercus dichotomus*), red brocket deer (*Mazama americana*), capybara (*Hydrochoerus hydrochaeris*), savanna fox (*Cerdocyon thous*), and great fruit-eating bat (*Artibeus lituratus*; Delpietro et al. 2009). Other attacks were reported for Perú on sea lions (*Otaria flavescens*) (Catenazzi & Donnelly 2008); for Mexico on white-tailed deer (*Odocoileus virginianus*) (Sánchez-Cordero et al. 2011); and for Brazil on feral pig (*Sus scrofa*), lowland tapir (*Tapirus terrestris*) and red brocket deer (*Mazama americana*) (Galetti et al. 2016; Pignatton Gnocchi & Srbeke-Araujo 2017).

In this note we present evidence of common vampire bats attacking two wild exotic herbivores, the wild pig (*Sus scrofa*) and the chital deer (*Axis axis*). Observations were conducted at El Palmar National Park (EPNP), Entre Ríos province (Argentina) (31° 53' 17,55" S, 58° 15' 45,17" W; 19 m.a.s.l.). EPNP has 8500 ha and its main vegetation type is savanna with palm trees (*Butia yatay*), but there are gallery forests along the Uruguay river and several streams (Batista et al. 2014). In this study we used seven camera traps distributed in the EPNP for different purposes. One camera was active 181 days from September 2012 to February 2013, the other six cameras were active 129 days each from April 2017 to March 2018.

Two attacks on wild pigs were observed in a northeastern area of EPNP (31° 51' 58,5" S, 58° 13' 33,5" W). A single vampire was recorded at 01:20 hs on October 26, 2012, on the middle-back area of a female pig (Fig. 1). Three days later on October 29 at 20:25 hs, two vampires were recorded near the tail of (probably) the same wild pig. This assumption was based on the similar size and evident lactating state of the pig in both photos. A single vampire was recorded on the left scapular area of an adult male chital deer east of EPNP (31° 52' 25,8" S, 58° 13' 31,1" W) at 21:40 hs on May 22, 2017 (Fig. 2).

To our knowledge, this are the first reports to document attacks of vampire bats to exotic wild mammals in Argentina. Vampires feeding on wild mammals could spread pathogens among their prey, including native mammals as capybaras, foxes and brown brocket deer, due to the absence of sanitary controls on them. The low number of domestic animals inside the protected area (i.e., EPNP) between the years 2006 and 2014 (Maranta personal comments), that include a small group of horses, cows and buffaloes would favor this kind of behavior (Streicker & Allgeier 2016).

Both areas where we documented the vampire attacks were located at 1.5 km from



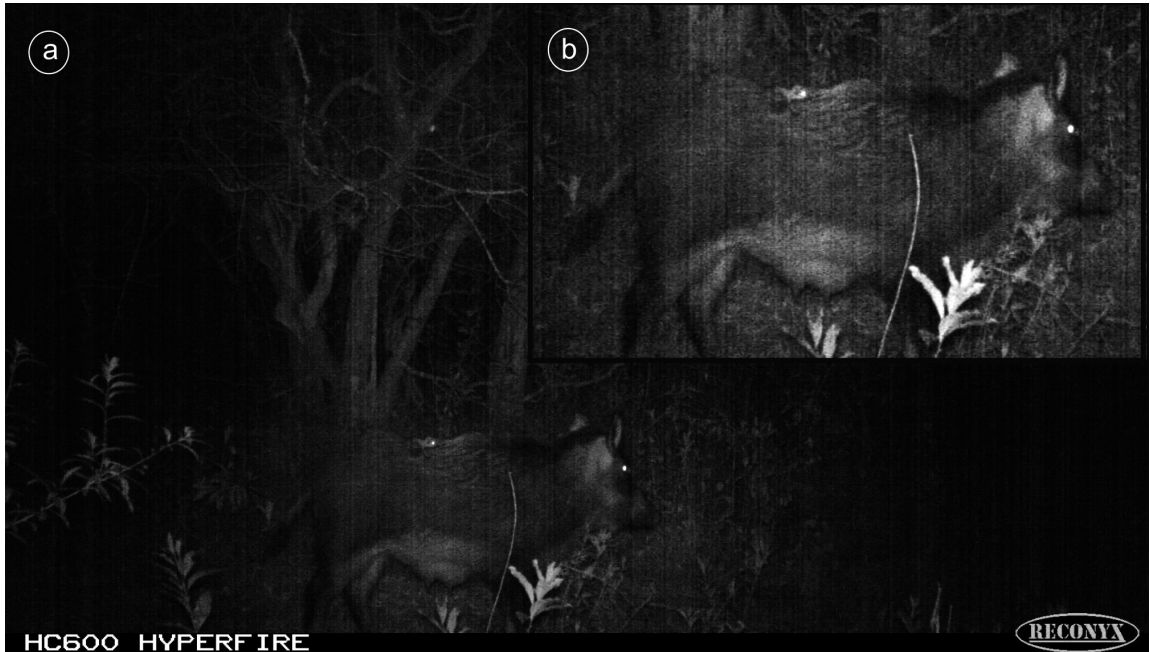


Figure 1. (a) One *Desmodus rotundus* rides on the middle back of a female *Sus scrofa* in the National Park El Palmar, Argentina; (b) Detail of the photo.



Figure 2. (a) A common vampire bat (*Desmodus rotundus*) rides on the left scapular area of a male axis deer in the National Park El Palmar, Argentina; (b) Zoom on the vampire of another photo.

the camping and houses area of the EPNP, and the vampires were observed sleeping in an abandoned house and in Jesuit ruins inside the EPNP (Maranta personal comments). However, attacks on people were not recorded so far. The lack of attacks on humans in this area is consistent with previous reports indicating that people

are an alternative prey for vampires, that they attack when large or medium-sized herbivores are missing or scarce (Delpietro & Russo 1996; Senasa 2011). Although the risk of vampire attacks on people seems to be minimal and the EPNP are not inside the endemic rabies area, it cannot be ruled out completely. For that reason, people who spend the night in the Park should be warned to sleep in closed places, or protected by nets or metal wire mesh.

ACKNOWLEDGEMENTS

We are grateful to all the personnel of El Palmar National Park for their support and help in the field. We are also indebted to Agostina Tammone, Aristóbulo Maranta and Cristian Sosa. We are also grateful to the anonymous reviewers for their useful revision that improved the manuscript. The camera-traps were funded by Idea Wild (United States).

LITERATURE CITED

- BATISTA W. B., ROLHAUSER A.G., BIGANZOLI F., BURKART S. E., GOVETO L., MARANTA A., PIGNATARO A. G., MORANDEIRA N. S., & M. RABADÁN. 2014. Las comunidades vegetales de la sabana del Parque Nacional El Palmar (Argentina). *Darwiniana*, nueva serie 2:5–38.
- BARQUEZ, R. M., M. A. MARES, & J. K. BRAUN. 1999. The Bats of Argentina. Special Publications of the Museum of Texas Tech University, Number 42, Lubbock.
- CATENAZZI, A., & M. A. DONNELLY. 2008. Sea lion *Otaria flavescens* as host of the common vampire bat *Desmodus rotundus*. *Marine Ecology Progress Series* 360:285–289.
- DELPIETRO, A., & G. RUSSO. 1996. Aspectos ecológicos y epidemiológicos de la agresión del vampiro y de la rabia paralítica en la Argentina y análisis de las propuestas efectuadas para su control. *Revue Scientifique et Technique (International Office of Epizooties)* 15:971–984.
- DELPIETRO, H. A., R. D. LORD, R. G. RUSSO, & F. GURY-DHOMEN. 2009. Observations of Sylvatic Rabies in Northern Argentina during Outbreaks of Paralytic Cattle Rabies Transmitted by Vampire Bats (*Desmodus rotundus*). *Journal of Wildlife Diseases* 45:1169–1173.
- DELPIETRO, H. A., R. G. RUSSO, G. G. CARTER, R. D. LORD, & G. L. DELPIETRO. 2017. Reproductive seasonality, sex ratio and philopatry in Argentina's common vampire bats. *Royal Society Open Science* 4:160959.
- GALETTI, M., F. PEDROSA, A. KEUROGHLIAN, & I. SAZIMA. 2016. Liquid lunch – vampire bats feed on invasive feral pigs and other ungulates. *Frontiers in Ecology and the Environment* 14:505–506.
- GREENHALL, A. M. 1971. Lucha contra los murciélagos vampiros. *Boletín de la Oficina Sanitaria Panamericana*:231–246.
- GREENHALL, A. M., G. JOENNANN, & U. SCHMIDT. 1983. *Desmodus rotundus*. *Mammalian Species* 202:1–6.
- JOHNSON, N., N. ARÉCHIGA-CEBALLOS, & A. AGUILAR-SETIEN. 2014. Vampire bat rabies: Ecology, epidemiology and control. *Viruses* 6:1911–1928.
- KOOPMAN, K. F. 1988. Systematics and distribution. *Natural History of Vampire Bats* (A. M. Greenhall & U. Schmidt, eds.). CRC Press, Boca raton
- MOYA, M. I., PACHECO, L. F. & AGUIRRE, L.F. 2015. Relación de los ataques de *Desmodus rotundus* con el manejo del ganado caprino y algunas características del hábitat en la prepuna de Bolivia. *Mastozoología Neotropical* 22:73–84.
- PIGNATON GNOCCHI, A., & A. C. SRBEK-ARAUJO. 2017. Common Vampire Bat (*Desmodus rotundus*) feeding



- on Lowland Tapir (*Tapirus terrestris*) in an Atlantic Forest remnant in southeastern Brazil. *Biota Neotropica* 17:e20170326.
- SÁNCHEZ-CORDERO, V., F. BOTELLO, G. MAGAÑA-COTA, & J. IGLESIAS. 2011. Vampire bats, *Desmodus rotundus*, feeding on white-tailed deer, *Odocoileus virginianus*. *Mammalia* 75:91–92.
- SENASA. 2011. Manual de procedimientos de rabia pareasiente. www.senasa.gob.ar/sites/default/files/rabia_pareasiente_0.pdf ISBN 978-987-9429-10-5.
- STREICKER, D. G., & J. E. ALLGEIER. 2016. Foraging choices of vampire bats in diverse landscapes: potential implications for land-use change and disease transmission. *Journal of Applied Ecology* 53:1280–1288.
- VOIGT, C. C., & D. H. KELM. 2006. Host preference of the Common Vampire Bat (*Desmodus rotundus*; Chiroptera) assessed by stable isotopes. *Journal of Mammalogy* 87:1–6.

