

**Spatial dynamics of the Argentine sandperch, *Pseudoperca semifasciata* (Pinguipedidae), in temperate rocky reefs from northern Patagonia, Argentina**

Leonardo A. Venerus\*, Alejo J. Irigoyen, David E. Galván and Ana M. Parma

Centro Nacional Patagónico – Consejo Nacional de Investigaciones Científicas y Técnicas (CENPAT – CONICET)

Boulevard Brown 2915 (U9120ACD) Puerto Madryn, Chubut, Argentina

TE: +54 280 4451024 Ext. 1286

Fax: +54 280 4451543

E-mail: [leo@cenpat.edu.ar](mailto:leo@cenpat.edu.ar)

\* Corresponding author

## Abstract

The choice of appropriate conservation strategies for reef fishes depends on their mobility, degree of site fidelity and residence times. Here we report the results of a small-scale mark-recapture and resighting study conducted to investigate the spatial dynamics of the Argentine sandperch *Pseudoperca semifasciata*. This is the flagship species of the rocky-reef fish assemblage from northern Patagonia, which has been the target of uncontrolled fishing since the early 50's. About 19% of the fish tagged were recaptured up to four years after tagging. In total, 180 of 218 recaptured fish stayed in the reef of tagging. Thirty six of 57 recaptures made at known locations within popular fishing areas of San José Gulf, densely covered by patchy reefs, occurred within 100 m of the tagging site, up to 793 days since tagging. Six fish were recovered at more than 1 km. Smaller fish were more prone to relocate, and were recovered farther from the tagging site. Fish stayed in the reefs for periods longer than a year; larger males remained longer in the same reefs. Our results indicate that relatively small reserves (in the order of a few kilometres) could be effective at protecting *P. semifasciata* populations within the northern Patagonian gulfs.

**Additional keywords:** external tags, MPA, site fidelity, movement patterns, *Undaria pinnatifida*.

**Running head:** Spatial dynamics of *Pseudoperca semifasciata*.

## Introduction

The design of marine protected areas (MPAs) needs to take into account the spatial dynamics, site fidelity and movement rates of the species to be protected (e.g., Kramer and Chapman 1999; Edgar *et al.* 2004; Chateau and Wantiez 2009). MPAs are more effective at protecting species whose individual movements are restricted to localized areas during at least part of their life-span. Both relocation of fish (i.e., a permanent shift in the position of its home range, *sensu* Robertson 1988) and migration (in which individuals do not return to the vicinity of their original position, Kramer and Chapman 1999), may increase spill-over of fish from reserves increasing their exposure to fishing (Rowley 1994; Bohnsack 1998; Gell and Roberts 2003).

A high degree of site-attachment, typical of coral reef species (see references in Kramer and Chapman 1999 and Jones 2005), also appears to be frequent among temperate and warm-temperate reef fishes. This is the case of many species belonging to the families Cheilodactylidae (Lowry and Suthers 1998), Cottidae (Mireles *et al.* 2012), Labridae (Barrett 1995; Arendt *et al.* 2001; Edgar *et al.* 2004; Topping *et al.* 2005; Bryars *et al.* 2012), Monacanthidae (Barrett 1995; Edgar *et al.* 2004), Pempheridae (Annese and Kingsford 2005), Pinguipedidae (Mace and Johnston, 1983; Cole *et al.* 2000; Carbines and McKenzie 2004), Scorpaenidae (Matthews *et al.* 1987), Sebastidae (Jorgensen *et al.*, 2006; Green and Starr 2011), Serranidae (Lembo *et al.* 1999; Lowe *et al.* 2003; Irigoyen 2010), Sparidae (Willis *et al.* 2001; Griffiths and Wilke 2002; Parsons *et al.* 2003; Kerwath *et al.* 2007), and Syngnathidae (Connolly *et al.* 2002; Moreau and Vincent 2004). The ubiquitousness of reduced mobility in temperate reef species suggests that MPAs, as well as other spatial management strategies, may be adequate tools for protecting these species (Gunderson *et al.* 2008).

The argentine sandperch *Pseudoperca semifasciata* (Cuvier 1829) is a sport trophy fish that inhabits rocky reefs along the coast of Argentina (Galván *et al.* 2009b). This species, which exceeds 1.20 m length and 25 kg weight (Elías and Burgos 1988; González 2006), has been the primary target of largely unregulated artisanal and recreational hook-and-line and spear-fisheries, and a tourist attraction for scuba divers within the northern Patagonian gulfs since the early 50's (Sanabra 2002). Despite its economic and cultural importance, the exploitation of the rocky-reef fish assemblage along the coast of Chubut Province (42–46°S) has never been monitored or regulated. Only a 30-kg restriction per fishing license per day has been in place since 1994 within

the Peninsula Valdés Reserve, a site declared Natural World Heritage Site by UNESCO in 1999 (Fig. 1). The inadequacy of this regulation, together with the lack of effective controls, have led to the local depletion of *P. semifasciata* in the most popular fishing spots within San José and Nuevo gulfs (Venerus 2006).

Management options are limited given weak enforcement (Venerus 2006; 2010), and unsuitability of size limits due to barotrauma (Venerus, Personal observation). Marine reserves could be a suitable tool for protecting local populations of *P. semifasciata*, but the effectiveness of spatial protection would depend on fish mobility. Anecdotal information as well as data from monitoring of selected reefs in San José Gulf (Venerus *et al.* 2008) suggest that *P. semifasciata* has high reef fidelity and restricted movement patterns. Local divers often report observing recognizable individuals (e.g., through scars) residing during long periods in the same reefs, often occupying the same crevices or reef areas. The general perception of anglers and spearfishers is that fishing can easily deplete reefs of *P. semifasciata*, and that recovery of abundance takes a long time (Venerus 2006; 2010). Underwater visual censuses of *P. semifasciata* conducted in lightly exploited reefs of San José Gulf showed remarkably stable abundance and size composition over the annual cycle (Venerus *et al.* 2008). Also, recovery of abundance after documented fishing events took more than a year (Venerus *et al.* 2008). While these findings provide indirect evidence of limited dispersal and high site fidelity for juvenile >30 cm total length (TL) and adult fish, no specific study of movements has been reported in the literature for this species.

The stability of the size distribution of fishes in unexploited reefs and the absence of recruitment pulses reported by Venerus *et al.* (2008) suggest that recruitment to the reefs may be gradual, and dependent on the availability of adequate refuges and on density of resident fish. The fact that adult males are larger than females and change colour after reaching sexual maturity (from yellowish to grey mostly at 50–65 cm TL) has prompted the hypothesis of a resource- or female-defence mating system (González 1998; Venerus *et al.* 2008). González (1998) speculated that grey males would actively defend a spawning territory, while yellow males, which are indistinguishable from females, would sneak into it to gain opportunistic access to females. Supporting behavioural observations are however very limited.

In this paper, we analyse the spatial dynamics of adult *P. semifasciata* from two main sources of information: (i) a small-scale tagging program conducted to study mobility and site fidelity within San José Gulf, and (ii) fine-scale underwater

observations of residence patterns in a few reefs within Nuevo and San José gulfs. We also use recapture data to test a hypothesis about potential differences in mobility and residence times among chromatic phenotypes and size classes. We hypothesize that smaller fish have higher mobility and disperse more than larger individuals in search for space and refuge, while larger grey males are more strongly site-attached. We test three specific predictions: (1) fish that relocate or emigrate are smaller than those that remain in the reef; (2) smaller fish move farther from the tagging sites; and (3) grey or transitional fish have longer residence times than yellow individuals. Results are relevant to the identification of appropriate strategies for the conservation of the temperate rocky reefs from northern Patagonia.

## Materials and methods

### *Species studied*

*Pseudoperca semifasciata* is a long-lived (~30 years, Elías and Burgos 1988; González 2006), non-schooling reef fish belonging to the family Pinguipedidae, distributed from 23°S in Brazil to 47°S in Argentina (Menezes and Figueiredo 1985; Cousseau and Perrotta 2000). This species is gonochoric, sexually dimorphic (males are larger than females) and dichromatic (Macchi *et al.* 1995; González 1998; 2006). Males with intermediate colour patterns are considered transitional (González 2006; Venerus 2006). Maximum sizes for females, and for yellow and grey males are, respectively, 125 cm, 93 cm and 140 cm TL (González 2006). Females reach maturity at 37 cm TL (~ 3 years old, Elías and Burgos 1988; González 1998) and retain their juvenile colour through adulthood (González 1998; 2006). Four yellow males ranging between 39 cm and 42 cm TL whose gonads were microscopically studied had sperm in their efferent ducts, suggesting that they were physiologically mature (Venerus and Macchi<sup>1</sup>, unpublished data). This species is a multiple spawner; its spawning season centers in November-December in Patagonia (Elías and Burgos 1988; Macchi *et al.* 1995). Although mating displays have not been observed, the low small size of the testes in relation to body mass (male gonadosomatic index between 0.02 and 0.14%, González 1998) suggests that mating pairs need to be in close proximity, or that the

---

<sup>1</sup> Dr. Gustavo Macchi, Instituto Nacional de Investigación y Desarrollo Pesquero (INIDEP), Mar del Plata, Argentina.

eggs are laid in enclosed spaces, e.g., inside crevices. In addition, the year-round stability of fish abundance observed in reefs of San José Gulf (Venerus *et al.* 2008), is not consistent with the occurrence of spawning migrations and/or the formation of spawning aggregations; rather, it suggests that spawning may occur in the reefs or in nearby soft bottom areas probably involving some form of resource- and/or female-defence mechanisms. Within San José Gulf, this species occurs at low densities, even in lightly exploited reefs, on the order of 1–1.5 fish per 10 m of reef ledge (Venerus *et al.* 2008). In general, only fish >20 cm TL are found in the reefs. Grey fish are much less abundant than yellow; the average ratio found in San José Gulf was 13:1 (Venerus *et al.* 2008).

#### *Study site*

Reefs are small, isolated rocky outcrops that most commonly extend between >50 m and a few hundred metres on an otherwise flat, soft bottom. The commonest reef topography consists in longitudinal breaks or ledges (~0.3–1.5 m high) formed along the edge of submerged abrasion limestone platforms, where cavities are formed.

Fishing spots, each encompassing patchy reef areas of variable extension, are locally known by the name of the beach or other geographical features. For this study, we identified nine fishing spots within San José Gulf: Esfinge Point, Camp 39, Fracasso Beach, Fracasso's Prows, the mouth of the gulf, San Román Point, Conos Point, Larralde Beach and Gales Point (Fig. 1). In the latter four we identified between three and 14 reefs, distant between 120 m and 3.9 km (Fig. S1, available as Supplementary Material to this paper). San José Gulf and the northern coast of Golfo Nuevo are included in the Península Valdés Reserve. Although trawling and long-lining are effectively banned within the gulfs, illegal commercial hook-and-line fishing occurs. Recreational anglers and spear-fishers frequent the reserve and a few charter boats operate from Larralde Beach, Gales Point and Puerto Pirámide (Fig. 1), mainly during summer and early fall (Venerus 2006).

#### *Fish tagging*

Thirty-five reefs were located in San José Gulf by interviewing recreational and artisanal fishers before the onset of the tagging program. A total of 1075 fish were

157 tagged during 126 fishing sessions, between October 2001 and August 2005. In  
158 addition, 63 fish were tagged in reef #36, Golfo Nuevo, during 17 fishing sessions,  
159 between August 2003 and December 2004. In total, 1012 yellow, 74 grey and 52  
160 transitional fish were tagged. Tagging trips were scheduled opportunistically, mostly  
161 restricted by weather conditions, therefore sampling effort was uneven (Tables 1 and  
162 S1, the latter available as Supplementary Material to this paper). In addition to research  
163 trips, we tagged fish on board of one charter boat that operates off Larralde Beach and  
164 in the mouth of San José Gulf. The total angling effort exerted off Larralde Beach, in  
165 which at least 14 reefs are distributed within an area of ~5 km<sup>2</sup>, for example, was  
166 unevenly distributed among reefs, with reefs #24 – #26 visited by the charter boat in  
167 almost every fishing trip (Fig. S1, available as Supplementary Material to this paper).

168 Fish were angled with hand-lines up to ~28 m depth during research trips or with  
169 rod-and-reel up to ~50 m depth during charter boat trips. They were measured to the  
170 lowest cm, tagged onboard using Floy™ FD-68B anchor tags and Dennison tagging  
171 guns, and immediately released. Only fish <50–55 cm TL were released during charter  
172 boat trips.

173 Fish were laid on a wooden “V” shaped cradle and their eyes were covered by a  
174 wet piece of fabric during tagging. Tags were inserted at the base of the dorsal fin, with  
175 the gun pointing forward at an angle of ~45° with respect to the longitudinal axis of the  
176 fish. Two tags were applied to each fish in reefs #36 and #11 (since January 2004 in  
177 the latter) to allow individual identification underwater, using a combination of tag  
178 colour, and location along the dorsal fin and body side. Since February 2004 all fish  
179 were double-tagged to increase recovery rates. A total of 268 fish were double-tagged.  
180 To minimise injuries produced by the swim bladder stress syndrome while allowing  
181 fish to return quickly to the sea bottom, some fish were punctured with the hollow  
182 needle of the tagging gun before being released (see Gotshall 1964).

### 183 184 *Tag recovery*

185  
186 Tags were recovered by us during underwater surveys of shallow reefs off  
187 Esfinge Point, San Román Point, Conos Point, Fracasso Beach, Larralde Beach (San  
188 José Gulf) and East Point (Golfo Nuevo), by hook-and-line in all reefs, and by  
189 occasional spear-fishing (Table 1 and Fig. 1). Underwater resightings were recorded  
190 during 119 visits to the reefs and ~250 hours of scuba diving (Table 1), between

October 2001 and August 2005. Our main motivation for conducting diving surveys in the same reefs of tagging was to investigate fish residence patterns. A resighting was recorded every time an individual fish was observed in a reef on a given date by one or more divers. Visual estimates of fish size in 10-cm TL classes, along with the colour and location of tags, were recorded on plastic slates.

Tags were also recovered and reported by recreational anglers, spear-fishers and fishing-guides, who called the phone number printed on the tags or contacted our samplers at the landing sites. A brochure about the tagging program was broadly distributed and publicized by Internet, e-mail and the local press. A system of small rewards was implemented in December 2003 in order to encourage tag reporting.

### *Fisheries monitoring*

Information on recreational angling and spear-fishing effort (i.e., number of fishing trips) was available for the most popular fishing spots within San José Gulf, off Larralde Beach and Gales Point, and in the mouth of the gulf, from a monitoring program conducted between October 2002 and December 2007 (see details in Venerus 2006). In addition, we recorded the number of trips made by the charter boat from which we tagged fish to each of the patchy rocky areas #21, #22, #24 – #26 and #29 (off Larralde Beach), by interviewing the skipper every two or three days throughout the fishing season (Fig. S1, available as Supplementary Material to this paper).

### *Site fidelity*

In order to estimate the distance between release and recapture sites, the boat position was recorded with a GPS each time a fish was hooked during a research trip. In general, sport fishers did not report recapture locations precisely; hence not all recaptures could be associated to a specific reef. In some cases fishers were interviewed to help locate recapture sites as accurately as possible.

An extensive census of tagged fish covering the entire reef was done during each diving survey in reefs #11 and #36. The fraction of visits that resulted in a resight (from the day of tagging to the last resight) was calculated for each individual fish in order to estimate the resighting probability. Surveys of reef #36 made during September-October were excluded because fish temporarily abandoned the reef



(Irigoyen *et al.* 2011, Venerus *et al.* 2013). To gather information on reef use at a finer scale, a few well-identified crevices in reefs #3, #11 and # 36 were visited frequently to record the presence and identity of fish in their surroundings (<2 m).

#### *Statistical analysis and predictions testing*

Geodetic coordinates (latitude and longitude) were projected onto a Gauss-Krüger grid with the software GeoCalc 3.05 to calculate distances between release and recapture. When the exact recapture location was not reported but the reef was identified, the position at recapture was equated to the reef's geographic centroid.

Recapture data were used to test predictions 1–3, derived from the hypothesis about differential movement by type and phenotype, using randomization tests (Manly 1991). For testing predictions 1 and 2, recaptures for which distance moved could be estimated were selected, and fish sizes were randomly permuted with respect to distance moved under the null hypotheses that the probability of relocation/emigration (1), and the distance moved (2) were independent of fish size. Only data from four fishing spots in San José Gulf (Larralde Beach, San Román Point, Conos Point and Gales Point), in which multiple reefs were used for tagging and searching for tagged fish, were included. For testing prediction 3, fish phenotype (yellow and transitional or grey) was permuted with respect to the number of days between tagging and the last recapture in the same reef, under the null hypothesis of independence between fish phenotype and residence time. In all cases, Monte Carlo permutations ( $n = 5000$ ) were stratified by fishing spot because the size frequency distributions of fish tagged, the range of distances moved, and the sampling efforts were not homogeneous among sites (Table 1). Fishing spots that had only a few recoveries (San Román and Conos) were pooled in one group. Gales Point and the mouth were also pooled for testing prediction 3.

To test prediction 1, the cumulative distribution function of the size of fish that moved >150 m, used as a rule to classify relocation/emigration from the tagging site, was compared to the 95% confidence bounds of the corresponding distribution estimated by stratified Monte Carlo permutations under the null hypothesis. Similarly, the cumulative distribution of the distance moved for fish smaller than a given threshold size was used to test prediction 2, using different size thresholds (fish  $\leq 45$  cm TL,  $\leq 50$  cm TL, and so on). Finally, prediction 3 was evaluated by comparing the

cumulative distribution of days-in-the-reef for fish of the grey/transitional phenotype with the 95% confidence bounds of the corresponding distribution for all fish  $\geq 47$  cm TL under the null hypothesis. The size of 47 cm, corresponding to the smallest transition fish, was selected to avoid confounding the effects of phenotype and fish size. In addition, we estimated the Kendall's Tau-b correlation coefficient between the residence time and fish size. The data set used in this case contained all recoveries made in the reef of tagging, including our own and those reported by anglers and spear-fishers. We repeated the analysis by eliminating fish with short residence times ( $< 50$  days since tagging) to avoid any potential bias associated with recaptures in the initial sampling period.

Calculations were done using an *ad-hoc* code programmed in R language (version 2.7.1, R Development Core Team 2008).

## Results

### *Tag recovery statistics*

The number of recaptures and resightings closely followed the number of angling and diving trips (Fig. S2, available as Supplementary Material to this paper).

A total of 218 fish were recaptured and/or resighted at least once, up to 1427 days after tagging. No selection bias occurred during the recovery of tags: fish sizes and proportions of chromatic phenotypes were similar for tagged and recaptured or resighted fish (Fig. S3, available as Supplementary Material to this paper). Ten fish changed from yellow to transitional or grey (minimum time period elapsed = 43 days), and four transitional males were recaptured as grey.

A total of 187 recaptures of 165 individuals were obtained by angling ( $n = 170$ ) or spear-fishing ( $n = 17$ ) between May 2002 and December 2007 (Table 1). Among the fish angled by the project staff, sixteen individuals were re-caught twice (from 54 to 1427 days at liberty) and three were re-caught three times (from 186 to 449 days at liberty). The majority of recaptures were made during research trips ( $n = 106$ ); the rest were recovered by artisanal ( $n = 11$ ) and sport ( $n = 28$ ) fishers, and fishing guides ( $n = 42$ ).

In total, 284 resightings of 91 fish were recorded in five reefs from San José Gulf (100 resightings) and in the reef from Golfo Nuevo (184 resightings), between January

2002 and August 2005 (Table 1). Fifty-six of those fish were repeatedly resighted (Fig. 2). More tagged fish were resighted in both gulfs, but their identity could not be established.

#### *Site fidelity*

Overall, *P. semifasciata* was strongly site-attached to the reefs. Based on our recaptures/resightings, and on the reports by anglers and spear-fishers, 180 fish stayed in the same reef of tagging while an additional 20, for which the exact recapture location was not reported, remained at the same fishing spot. Another 17 fish moved between reefs within the same fishing spot, and only one individual, tagged in Conos Point, was speared at reef # 11 (Camp 39) (6.2 km far) after 104 days (Table S2, available as Supplementary Material to this paper).

The distance between release and recapture locations was estimated in 96 cases, 57 of which came from four fishing spots in San José Gulf, in which tagging and recapture surveys were conducted at several patchy reef areas (Larralde Beach, San Román Point, Conos Point and Gales Point) (Figs. 1 and S1, the latter available as Supplementary Material to this paper). Of those 57 distances, 36 were <100 m; 11 fish remained within 100 m even after a long period at large, from 6 to 26 months (Fig. 3). Fifteen of the fish that moved >100 m from the tagging site were caught off Larralde Beach, the most heavily fished spot, where both the number of fish tagged ( $n = 247$ ) and the fishing effort (in total, >540 trips were estimated for the period 2002 – 2007) were greatest (Table 1). These conditions allowed recovering 28% of the fish tagged within this fishing spot.

Overall, six fish were recaptured farther than 1 km in our study. Four of them were recaptured off Larralde Beach and San Román Point, in reefs that were surveyed or fished often (Table S2 and Fig. S1, available as Supplementary Material to this paper).

Smaller fish were more prone to relocate or emigrate (prediction 1): the proportion of fish  $\leq 50$  cm TL among those that displaced >150 m ( $p = 0.88$ ;  $n = 15$  of 17) was larger than for fish that moved less ( $p = 0.55$ ;  $n = 20$  of 40). That proportion was larger than the 95% upper confidence limit under the null hypothesis of no association between fish size and distance moved (Fig. 4). With respect to prediction 2, fish  $\leq 45$  cm TL were recaptured within 150 m in a smaller proportion ( $p = 0.38$ ;  $n = 8$

of 21) than larger fish ( $p = 0.89$ ;  $n = 32$  of 36). That proportion was smaller than the 95% lower confidence limit under the null hypothesis (Fig. 4).

### *Residence patterns*

Fish were repeatedly resighted and/or recaptured in the same reefs, mainly in reefs #11 and #36, the reefs most intensely surveyed by scuba. More than 70% of the individuals resighted were registered in more than half of the visits (Fig. 2). This indicates that at least some fish stay in the reefs during periods exceeding the year. For example, a transitional fish 55 cm TL was resighted 14 times and hand-lined twice in reef #36, between October 2003 and January 2005 (459 days after tagging). In total, there were 15 fish that could not be individually identified because they had a single tag but, based on their tag colour, they could have migrated from other reefs. However, a few records with wrong combinations of fish size and tag colour indicate that misidentifications of tag colour can not be ruled out.

Overall, the distribution of residence periods (i.e., maximum number of days a fish was recorded in the same reef) declined exponentially since about 200 days after tagging (Fig. 5). Yellow fish showed a median residence period of 150 days (quartiles = 67 and 253 days), while grey and transitional fish were registered for longer periods: median residence time = 239 days (quartiles = 112 and 453 days). About 23% of the grey or transitional fish stayed in the reefs longer than a year, compared to <7% for yellow fish. The proportion of grey or transitional fish that remained in the reefs for shorter periods (from 100 to 600 days) was lower than the 95% confidence bound estimated under the null hypothesis of no association between phenotype and residence time (Fig. 4). This result did not change even when 21 fish resighted or recaptured in the same reef immediately after tagging (<50 days since tagging) were excluded from the analysis. The number of days spent in the same reef was uncorrelated with fish size ( $n = 107$ , Kendall's Tau-b = 0.028;  $P = 0.677$ ), so it was unlikely that the phenotype effect detected when testing prediction 3 was actually a size effect.

A seasonal trend in resightings was observed in Golfo Nuevo but not in San José Gulf, paralleling trends in the numbers of fish censused in reefs #36 and #11, respectively (Venerus *et al.* 2008, Irigoyen *et al.* 2011, Venerus *et al.* 2013). Tagged fish disappeared from reef #36 in September-October, along with a sharp drop in total fish counts, and reappeared since November-December. The disappearance of fish

coincided with the seasonal peak in the abundance of drifting individuals of the invasive kelp *Undaria pinnatifida*, which get stuck onto reefs, physically obstructing the refuges. By contrast, in reef # 11, which was free of *U. pinnatifida*, the number of resightings fluctuated without a clear seasonal trend; coincidentally with slighter fluctuations in abundance observed in San José Gulf (Venerus et al. 2008).

Repeated resightings of fish also allowed us to examine the spatial dynamics at the within-reef scale. Fish were observed associated with crevices all year round and some were repeatedly encountered roaming in the same reef area or associated to the same refuge. Six yellow, one transitional and three grey fish were repeatedly observed for up to eight months in the vicinity of well identified crevices in reefs #36, #3 and #11 (Table 2), resting outside the crevices, patrolling close to their entrance or hidden inside. More than one fish were observed simultaneously associated to the same crevice, and one grey male was recorded entering two different crevices along the same day, at the start of the reproductive season. Further, in reef #36, two individuals re-occupied the same crevice after returning to the reef in late spring and summer, once the reef was clear of *U. pinnatifida* (Table 2).

## Discussion

### *Site fidelity*

The general pattern observed in the tag recoveries indicates that *P. semifasciata* is strongly site-attached: most fish stayed in the reefs or nearby and moved <100 m from the tagging site during time periods that exceeded a year. Fewer individuals, mainly yellow fish  $\leq 45$  cm TL, moved longer distances between reefs of up to 6.2 km in 104 days. Most fish that displaced >100 m from the tagging site were recaptured off Larralde Beach. Because other fishing spots were sampled less intensively, the distribution of recoveries over represent the proportion of fish that moved less and stayed within patchy reef areas.

The gradual return of fish to the reef #36 during summer, once the reef was clear of *U. pinnatifida*, suggests the possibility of homing. While no planned relocation experiments have been conducted to investigate this possibility, the recapture of one yellow fish that had been displaced by us 1.1 km in the reef of tagging, 289 days later is also suggestive of this possibility.

Dispersal capabilities were also studied for the blue cod *Parapercis colias*, another pinguipedid species from temperate waters. Cole *et al.* (2000) reported that 90% of tagged blue cod were resighted within 100 m of the release point up to 31 months after tagging. Mace and Johnston (1983) found that 53 blue cod (~72% of the fish recaptured) were caught in the same headland or reef where they had been tagged, while 21 fish had displaced distances of up to 41.7 km from the tagging site. Carbines and Mackenzie (2004) also observed that up to 65% of all recaptures after one year occurred within 1 km of their release site, and that a small fraction of the tagged fish displaced longer distances of up to 156 km, in southern New Zealand. These evidences support the hypothesis that adult blue cod form resident subpopulations on the scale of a few kilometres in enclosed waterways due to limited migration and restricted home ranges on the temporal scale of one year, which was reinforced by dietary evidence (Rodgers and Wing 2008). This general pattern agrees with our results for *P. semifasciata*. However, the relationship between mobility and fish size was less clear in *P. colias* compared to *P. semifasciata*. Mace and Johnston (1983) reported that no *P. colias* >30 cm TL were recaptured at significant distances from where they had been tagged (maximum length of *P. colias* is >50 cm TL, Ayling and Cox, 1987; and size at first maturity is 21–25 cm TL, Rapson, 1956). In turn, Cole *et al.* (2000) did not find any obvious relationship between dispersal distance and fish size. However, all resightings of fish >35 cm TL in that study occurred within 150 m from the tagging site, suggesting that larger fish were home-ranging. Differently, Rapson (1956) found that among 18 fish that had moved more than 1.6 km, 16 were larger than 30 cm TL when tagged, which suggested the opposite pattern (i.e., larger fish move longer distances). Finally, Carbines (2004) found only a weak relationship between fish size and distance moved in *P. colias*.

#### *Residence patterns*

Multiple recaptures and resightings of fish over the annual cycle indicate that *P. semifasciata* have long residence times in the reefs that may exceed one year (Fig. 5). Furthermore, the observations of several fish occupying the same crevice or roaming in the same reef area over successive resightings, indicate that site-attachment also occurs at the within-reef scale (Table 2). The longest periods during which fish were registered in the same reef area in this study probably underestimate the actual

residence times for several reasons. First, a high tag shedding rate of 0.0040 day<sup>-1</sup> has been estimated for *P. semifasciata* (Venerus *et al.*, 2013), which would appreciably reduce recoveries over time. Under that tag shedding rate, the probability that a fish retains at least one tag after 200 days is 0.70 for a double-tagged fish and 0.45 for a single-tagged fish. In addition, many of the fish resighted with a single tag could not be unequivocally identified underwater, which affected more than 240 resightings. Second, the reliability of tag identification by scuba decreased with time as external tags became fouled after a few months. Third, as we continued tagging over the course of the study, fish tagged later in the study had less time to be resighted.

The occurrence of long residence times in *P. semifasciata* is consistent with the generally stable occupation pattern described by Venerus *et al.* (2008) in San José Gulf. In that study, fish abundance fluctuated between 17 and 33% around its mean. By contrast, the abundance of *P. semifasciata* in reef #36 of Golfo Nuevo fluctuated markedly; fish disappeared from the reef coincidentally with the seasonal presence of dense thickets of *U. pinnatifida* covering the reef ledges and blocking the entrances to the crevices (Irigoyen *et al.* 2011). This transitory loss of habitat observed particularly in low-relief reefs, the preferred habitat for this species (Galván 2008), could lead fish to relocate to deeper reefs free of *U. pinnatifida* during late winter and early spring. Indeed, the only fish caught far from the reef of tagging in Golfo Nuevo was angled at approximately 30 m depth in late winter, when the density of *U. pinnatifida* is highest (Irigoyen 2010).

Finally, longer residence times for grey and transitional males are consistent with the hypothesis of a female-defence or resource-defence mating system associated with the reefs (González 1998; Venerus *et al.* 2008).

#### *Management implications*

The high site fidelity registered in this study implies that no-take reserves could be effective for the conservation of local populations of *P. semifasciata*. Relatively small reserves (in the order of a few kilometres) could protect most fish within their limits. Restricted mobility and long residence, on the other hand, could limit fishery benefits through spill-over. Given that smaller fish were more prone to relocate or emigrate, spill-over from closed areas would be expected to be mostly of yellow individuals smaller than 45–50 cm LT.

Reserves could also protect other species of the assemblage targeted by anglers and spear-fishers. The Argentine seabass *Acanthistius patachonicus*, for example, also showed strong site fidelity and long residence times in reefs from Golfo Nuevo (Irigoyen 2010).

When our tagging program initiated, San José Gulf was free of *U. pinnatifida*. At present, the alien species has heavily colonized the southern coast of the gulf. Based on our results, reserves aimed at protecting *P. semifasciata* should include reef areas at depths greater than 20 m, deeper than the range occupied by *U. pinnatifida*.

Despite its strong association with refuges, *P. semifasciata* is an active predator that consumes soft-bottom prey in similar proportions to transient prey and to prey from rocky-bottoms (Galván *et al.* 2009a). Reserves should also include soft bottom areas used for foraging, which have been found to support, at least partially, the production of rocky reef fish populations (Galván *et al.* 2008, 2009a).

## Acknowledgements

We thank our field team for their invaluable help: R. Vera, “Cap.” A. Kowalyk, L. Loto, A. Cinti, A. Rodríguez, N. Ortiz, J. Rúa, P. Fiorda, J. Ciancio and M. Díaz. The artisanal fishers R. Díaz, L. de Francesco, J. Ascorti, J. and J. Signorelli, P. Oroquieta and M. Suárez shared information on reef locations. G. Harris from Fundación Patagonia Natural allowed us to use the installations in Camp 39. P. Fiorda helped with GIS. R code for Fig. 3 was based on one published by K. Kleinman and N. Horton in *SAS and R* (<http://sas-and-r.blogspot.com.ar>). Comments by the editor and two anonymous reviewers helped to improve an earlier version of the manuscript. This work was financed by grants from the ANPCyT (PICT 10041), and Liz Claiborne/Art Ortenberg Foundation and Wildlife Conservation Society (WCS 34320). Field work was conducted within a World Natural Heritage Site and authorized by the “Dirección General de Conservación de Areas Protegidas del Chubut”.

## References

Annese, D.M., and Kingsford, M.J. (2005). Distribution, movements and diet of nocturnal fishes on temperate reefs. *Environmental Biology of Fishes* **72**, 161–174.



- Arendt, M.D., Lucy, J.A., and Munroe, T.A. (2001). Seasonal occurrence and site-utilization patterns of adult tautog, *Tautoga onitis* (Labridae), at manmade and natural structures in lower Chesapeake Bay. *Fishery Bulletin* **99**, 519–527.
- Ayling, T., and Cox, G.J. (1987). 'Collins guide to the sea fishes of New Zealand.' (William Collins Publishers Ltd.: Auckland.)
- Barrett, N.S. (1995). Short- and long-term movement patterns of six temperate reef fishes (Families Labridae and Monacanthidae). *Marine and Freshwater Research* **46**, 853–860.
- Bohnsack, J.A. (1998), Application of marine reserves to reef fisheries management. *Australian Journal of Ecology* **23**, 298–304.
- Bryars, S., Rogers, P., Huveneers, C., Payne, N., Smith, I., and McDonald, B. (2012). Small home range in southern Australia's largest resident reef fish, the western blue grouper (*Achoerodus gouldii*): implications for adequacy of no-take marine protected areas. *Marine and Freshwater Research* **63**, 552–563.
- Carbines, G., and McKenzie, J. (2004). Movement patterns and stock mixing of blue cod in Dusky Sound in 2002. New Zealand Fisheries Assessment Report 2004/36, Wellington.
- Chateau, O., and Wantiez, L. (2009). Movement patterns of four coral reef fish species in a fragmented habitat in New Caledonia: implications for the design of marine protected area networks. *ICES Journal of Marine Science* **66**, 50–55.
- Cole, R.G., Villouta, E., and Davidson, R.J. (2000). Direct evidence of limited dispersal of the reef fish *Parapercis colias* (Pinguipedidae) within a marine reserve and adjacent fished areas. *Aquatic Conservation: Marine and Freshwater Ecosystems* **10**, 421–436.

- Connolly, R.M., Melville, A.J., and Keesing, J.K. (2002). Abundance, movement and individual identification of leafy seadragons, *Phycodurus eques* (Pisces: Syngnathidae). *Marine and Freshwater Research* **53**, 777–780.
- Cousseau, M.B., and Perrotta, R.G. (2000). 'Peces marinos de Argentina: Biología, distribución, pesca.' (INIDEP: Mar del Plata.) (In Spanish)
- Edgar, G.J., Barrett, N.S. and Morton, A.J. (2004). Patterns of fish movement on eastern Tasmanian rocky reefs. *Environmental Biology of Fishes* **70**, 273–284.
- Elías, I., and Burgos, G. (1988). Edad y crecimiento del “salmón de mar”, *Pseudopercis semifasciata* (Cuvier, 1829) (Osteichthyes, Pinguipedidae) en aguas norpatagónicas argentinas. *Investigación Pesquera* **52**, 533–548. (In Spanish)
- Galván, D.E., (2008). Ensamblajes de peces en los arrecifes norpatagónicos: diversidad, abundancia y relaciones tróficas y con el hábitat. Doctoral Thesis, Universidad Nacional del Comahue. (In Spanish)
- Galván, D.E., Botto, F., Parma, A.M., Bandieri, L., Mohamed, N., and Iribarne, O.O. (2009a). Food partitioning and spatial subsidy in shelter-limited fishes inhabiting patchy reefs of Patagonia. *Journal of Fish Biology* **75**, 2585–2605.
- Galván, D.E., Parma, A.M., and Iribarne, O.O. (2008). Influence of predatory reef fishes on the spatial distribution of *Munida gregaria* (= *M. subrugosa*) (Crustacea: Galatheididae) in shallow Patagonian soft bottoms. *Journal of Experimental Marine Biology and Ecology* **354**, 93–100.
- Galván, D.E., Venerus, L.A., and Irigoyen A.J. (2009b). The reef-fish fauna of the Northern Patagonian gulfs of Argentina, Southwestern Atlantic. *Open Fish Science Journal* **2**, 90–98.
- Gell, F.R., and Roberts, C.M. (2003). Benefits beyond boundaries: the fishery effects of marine reserves. *Trends in Ecology and Evolution* **18**, 448–455.

- González, R.A.C. (1998). Biología y explotación pesquera del salmón de mar *Pseudoperca semifasciata* (Cuvier, 1829) (Pinguipedidae) en el Golfo San Matías, Patagonia, Argentina. Doctoral Thesis, Universidad Nacional del Sur. (In Spanish)
- González, R.A.C. (2006). Age and growth of the Argentine sandperch *Pseudoperca semifasciata* (Cuvier, 1829) Berg, 1899 in the San Matías Gulf (Patagonia, Argentina). *Fisheries Research* **79**, 120–128.
- Gotshall, D.W. (1964). Increased tagged rockfish (genus *Sebastes*) survival by deflating the swim bladder. *California Fish and Game* **50**, 253–260.
- Green, K.M., and Starr, R.M. (2011). Movements of small adult black rockfish: implications for the design of MPAs. *Marine Ecology Progress Series* **436**, 219–230.
- Griffiths, M.H., and Wilke, C.G. (2002). Long-term movement patterns of five temperate-reef fishes (Pisces: Sparidae): implications for marine reserves. *Marine and Freshwater Research* **53**, 233–244.
- Gunderson, D.R., Parma, A.M., Hilborn, R., Cope, J.M., Fluharty, D.L., Miller, M.L., Vetter, R.D., Heppell, S.S., and Greene H.G. (2008). The challenge of managing nearshore rocky reef resources. *Fisheries* **33**, 172–179.
- Irigoyen, A.J., (2010). Efecto del alga invasora *Undaria pinnatifida* sobre la comunidad de peces de arrecife en los golfos Norpatagónicos. Doctoral Thesis, Universidad Nacional del Comahue. (In Spanish)
- Irigoyen, A.J., Eyra, C., and Parma, A.M. (2011). Alien algae *Undaria pinnatifida* causes habitat loss for rocky reef fishes in north Patagonia. *Biological Invasions* **13**, 17–24.
- Jones, K.M.M. (2005). The effect of territorial damselfish (family Pomacentridae) on the space use and behaviour of the coral reef fish, *Halichoeres bivittatus* (Bloch, 1791) (family Labridae). *Journal of Experimental Marine Biology and Ecology* **324**, 99–111.

- Jorgensen, S.J., Kaplan, D.M., Klimley, A.P., Morgan, S.G., O'Farrell, M.R., and Botsford, L.W. (2006). Limited movement in blue rockfish *Sebastes mystinus*: internal structure of home range. *Marine Ecology Progress Series* **327**, 157–170.
- Kerwath, S.E., Götz, A., Attwood, C.G., Cowley, P.D., and Sauer, W.H.H. (2007). Movement pattern and home range of Roman *Chrysoblephus laticeps*. *African Journal of Marine Science* **29**, 93–103.
- Kramer, D.L., and Chapman, M.R. (1999). Implications of fish home range size and relocation for marine reserve function. *Environmental Biology of Fishes* **55**, 65–79.
- Lembo, G., Fleming, I.A., Økland, F., Carbonara, P., and Spedicato, M.T. (1999). Site fidelity of the dusky grouper *Epinephelus marginatus* (Lowe, 1834) studied by acoustic telemetry. *Marine Life* **9**, 37–43.
- Lowe, C.G., Topping, D.T., Cartamil, D.P., and Papastamatiou Y.P. (2003). Movement patterns, home range, and habitat utilization of adult kelp bass *Paralabrax clathratus* in a temperate no-take marine reserve. *Marine Ecology Progress Series* **256**, 205–216.
- Lowry, M.B., and Suthers, I.M. (1998). Home range activity and distribution patterns of a temperate rocky reef fish, *Cheilodactylus fuscus*. *Marine Biology* **132**, 569–578.
- Macchi, G.J., Elías, I., and Burgos, G.E. (1995). Histological observations on the reproductive cycle of the Argentinean sandperch, *Pseudopercis semifasciata* (Osteichthyes, Pinguipedidae). *Scientia Marina* **59**, 119–127.
- Mace, J.T., and Johnston, A.D. (1983). Tagging experiments on blue cod (*Parapercis colias*) in the Marlborough Sounds, New Zealand. *New Zealand Journal of Marine and Freshwater Research* **17**, 207–211.
- Manly, B.F.J. (1991). 'Randomization and Monte Carlo methods in biology.' (Chapman and Hall: London.)

- Matthews, K.R., Miller, B.S., and Quinn, T.P. (1987). Movement studies of nearshore demersal rockfishes in Puget Sound, Washington. In 'Proceedings of the International Rockfish Symposium, Alaska Sea Grant Report 87-2, Anchorage, October 1986'. (Ed. B.R. Melteff) pp. 63-72 (University of Alaska)
- Menezes, N.A., and Figueiredo, J.L. (1985). 'Manual de peixes marinhos do sudeste do Brasil. V. Teleostei (4)'. (Museu de Zoologia, Universidade de São Paulo: São Paulo.) (In Portuguese)
- Mireles, C., Nakamura, R., and Wendt, D.E. (2012). A collaborative approach to investigate site fidelity, home range, and homing behaviour of cabezon (*Scorpaenichthys marmoratus*). *Fisheries Research* **113**, 133-142.
- Moreau, M.-A., and Vincent, A.C.J. (2004). Social structure and space use in a wild population of the Australian short-headed seahorse *Hippocampus breviceps* Peters, 1869. *Marine and Freshwater Research* **55**, 231-239.
- Parsons, D.M., Babcock, R.C., Hankin, R.K.S., Willis, T.J., Aitken, J.P., O'Dor, R.K., and Jackson, G.D. (2003). Snapper *Pagrus auratus* (Sparidae) home range dynamics: acoustic tagging studies in a marine reserve. *Marine Ecology Progress Series* **262**, 253-265.
- Rapson, A.M., (1956). Biology of the blue cod (*Parapercis colias* Forster) of New Zealand. PhD Thesis, Victoria University.
- R Development Core Team. (2008). 'R: A language and environment for statistical computing.' R Foundation for Statistical Computing, Vienna. ISBN 3-900051-07-0. Available at: <http://www.r-project.org> (Accessed 21 June 2012).
- Robertson, D.R. (1988). Abundances of sturgeonfishes on patch reefs in Caribbean Panamá: due to settlement, or post-settlement events? *Marine Biology* **97**, 495-501.

- Rodgers, K.L., and Wing, S.R. (2008). Spatial structure and movement of blue cod *Parapercis colias* in Doubtful Sound, New Zealand, inferred from  $\delta^{13}\text{C}$  and  $\delta^{15}\text{N}$ . *Marine Ecology Progress Series* **359**, 239–248.
- Rowley, R.J. (1994). Marine reserves in fisheries management. *Aquatic Conservation: Marine and Freshwater Ecosystems* **4**, 233–254.
- Sanabra, F. (2002). ‘Buceando recuerdos.’ (Ocean Ediciones Submarinas: Puerto Madryn.) (In Spanish)
- Topping, D.T., Lowe, C.G., and Caselle, J.E. (2005). Home range and habitat utilization of adult California sheephead, *Semicossyphus pulcher* (Labridae), in a temperate no-take marine reserve. *Marine Biology* **147**, 301–311.
- Venerus, L.A. (2006). Dinámica espacial del salmón de mar *Pseudopercis semifasciata* – Implicancias para el uso sustentable de sistemas de arrecifes rocosos. Doctoral Thesis, Universidad de Buenos Aires. (In Spanish)
- Venerus, L.A. (2010). La delicada situación de los sistemas de arrecifes rocosos en la Patagonia norte. *Ciencia e Investigación* **60**, 38–45. (In Spanish)
- Venerus, L.A., Parma, A.M., and Galván, D.E. (2008). Annual occupation pattern of temperate rocky reefs by the Argentine sandperch *Pseudopercis semifasciata* in San José Gulf Marine Park, Argentina. *Fisheries Management and Ecology* **15**, 217–229.
- Venerus, L.A., Irigoyen, A.J., and Parma, A.M. 2013. Assessment of biases in the estimation of tag shedding rates through a mark-resigth experiment. *Fisheries Research* **140**, 133–148.
- Willis, T.J., Parsons D.M., and Babcock, R.C. (2001). Evidence for long term site fidelity of snapper (*Pagrus auratus*) within a marine reserve. *New Zealand Journal of Marine and Freshwater Research* **35**, 581–590.

694 Table 1: Tagging and recovery statistics, and diving, hook-and-line and spearing effort in rocky reefs from San José (SJ) and Nuevo (N) gulfs.  
695 Fracasso's Prows, Gales Point and the mouth of San José Gulf were not surveyed by scuba diving (indicated by a dash).

Fishing Spot	Reef ID	Mean depth (m)	Number of fish tagged and released <sup>a</sup>	Size range of fish tagged (cm TL)	Number of recaptures (hook-and-line or spear) <sup>b</sup>	Number of identified resightings <sup>b</sup>	Diving surveys	Hook-and-line and spear-fishing trips <sup>c</sup>
Esfinge Point (SJ)	1	11	7	32 – 62	0	0	1	3
San Román Point (SJ)	2 – 4	10	168 (2)	22 – 106	12 (12)	16 (8)	43	32
Conos Point (SJ)	5 – 10	16	100 (3)	30 – 92	9 (9)	0	1	10
Camp 39 (SJ)	11	10	76 (1)	24 – 88	6 (6)	67 (22)	28	22
Fracasso Beach (SJ)	12 – 14	14	146 (3)	29 – 93	24 (22)	12 (5)	19	22
Fracasso's Prows (SJ)	15 – 17	22	14 (2)	40 – 78	0	–	–	1
Gales Point (SJ)	18 – 20	22	207 (5)	28 – 84	19 (18)	–	–	19 + (96)
Larralde Beach (SJ)	21 – 31	19	247 (8)	30 – 93	82 (70)	5 (5)	2	144 + (403)
Mouth (SJ)	32 – 35	38	111 (11)	30 – 93	3 (3)	–	–	63 + (118)
East Point (N)	36	12	63 (3)	30 – 76	32 (25)	184 (51)	25	17

696

697 <sup>a</sup> In parenthesis, numbers that died after capture/tagging.

698   <sup>b</sup> In parenthesis, number of different individuals recaptured or resighted. Note that some fish were recaptured and resighted, and hence are  
699 included in both counts.

700   <sup>c</sup> Besides the number of fishing trips conducted by us and charter boats, an estimated global fishing effort (minimum numbers of fishing trips)  
701 for the period Oct 2002 to Dec 2007 is provided for boat owners operating in the most popular fishing spots within San José Gulf: Larralde  
702 Beach, Gales Point and the mouth. Those estimations are based on data collected during a monitoring program conducted at the landing sites  
703 (see Venerus 2006 for further explanation).



704 Table 2: Repeated use of crevices by *P. semifasciata* in San José and Nuevo gulfs. C<sub>x</sub>: associated to crevice x; DAL: days at liberty associated to  
705 the same crevice; individual code composed of chromatic phenotype (Y: yellow, G: gray, Tr: transitional) and fish size at tagging (cm TL); R:  
706 resighted; T: date of tagging.

Reef # 36		2003		2004												2005								
		Oct		Dec		Jan	Feb		Mar		Abr		Jun	Jul		Ago		Sep	Oct	Nov	Dec	Jan		Feb
Id Code		DAL	6	27	2	15	10	13	4	20	28	1	28	23	26	20	13	13	2	6	28	11	28	24
Y42		153	T		R	R		R		C <sub>a</sub>		C <sub>a</sub>			R	C <sub>a</sub>								
Y45		25										T	C <sub>a</sub>	C <sub>a</sub>							R			
Y47		36									T	R			R					C <sub>a</sub>	C <sub>a</sub>	C <sub>a</sub>		R
Y47		161										T	C <sub>a</sub>	C <sub>a</sub>	R	C <sub>a</sub>				C <sub>a</sub>	C <sub>a</sub>		R	
Y51		70										T	R							C <sub>a</sub>	C <sub>a</sub>		R	
Y67		44							T	R	R	R	R	R		R		R		R	R	C <sub>b</sub>	C <sub>b</sub>	C <sub>b</sub>
Tr55		189		T	R	R		R	R	R	R	R	R	C <sub>b</sub>	C <sub>b</sub>	R					R	C <sub>b</sub>	C <sub>b</sub>	C <sub>b</sub>
G75		78		T			C <sub>c</sub>	R	C <sub>c</sub>	C <sub>c</sub>	C <sub>c</sub>													

Reef # 11		2004												
		Jan		Mar		May		Aug		Oct				
Id Code		DAL	24	25	8	28	10	28	29	5	15	16	2	3
G64		58	T			R	R	R	R	C <sub>d</sub>	C <sub>d</sub>	C <sub>d</sub>	C <sub>de</sub>	C <sub>de</sub>

Reef # 3		2002			2003			
		Aug	Oct	Dec	Feb		Apr	
Id Code		DAL	16	18	09	10	13	15
G86		242	C <sub>f</sub>	C <sub>f</sub>	C <sub>f</sub>	T/C <sub>f</sub>	C <sub>f</sub>	C <sub>f</sub>

## Figure captions

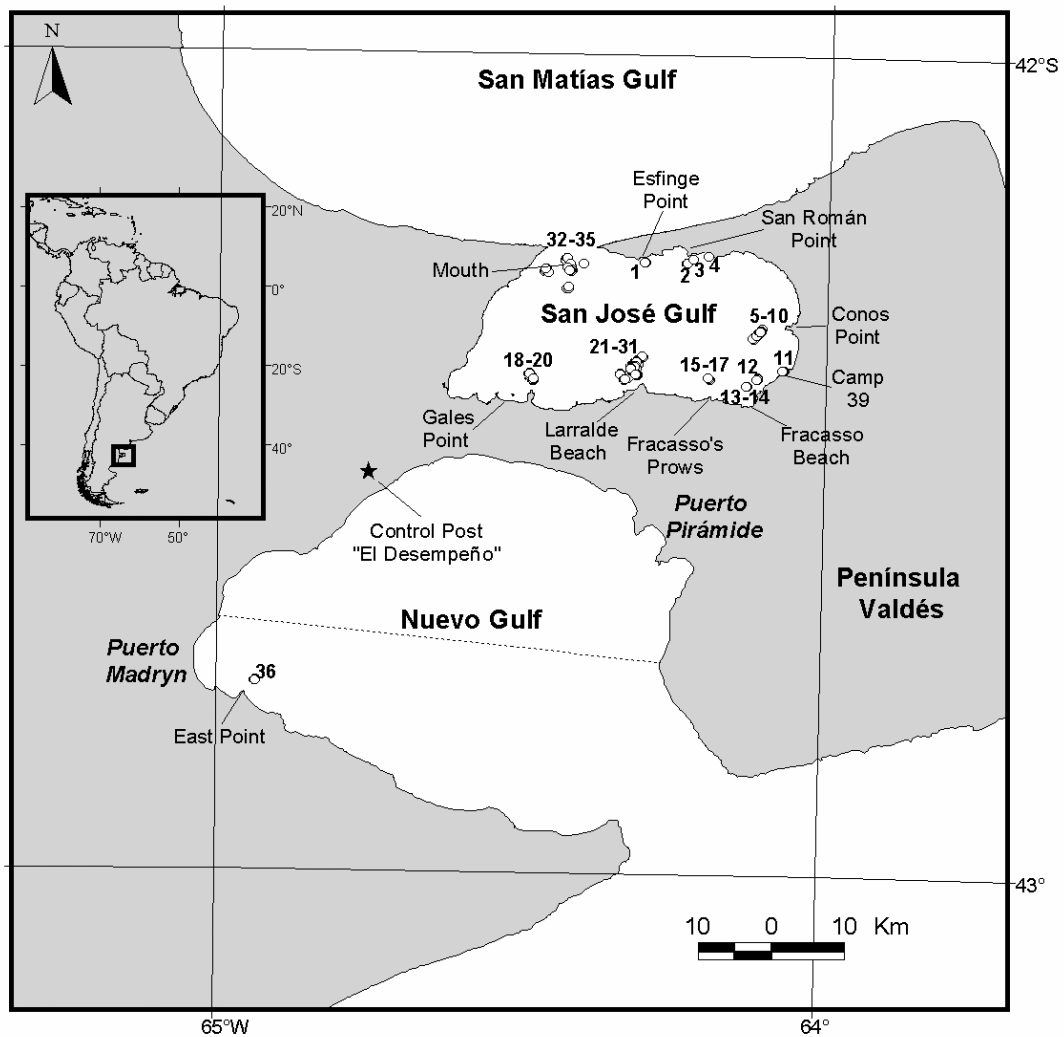
Figure 1: Study area showing the tagging locations within Nuevo and San José gulfs, Península Valdés. The reefs are numbered and their positions are indicated by open circles. The dotted line indicates the southern limit of the reserve within Golfo Nuevo.

Figure 2: Proportion of visits in which each fish was resighted *versus* residence time in the reef for double-tagged *P. semifasciata*. Each bubble represents one individual; with its size proportional to the number of visits made between the first and last resighting (from 1 to 18). Data are for reef #11 (white bubbles), surveyed by scuba 17 times between 24 Jan 2004 and 10 Aug 2005, and for reef #36 (grey bubbles), surveyed 24 times between 11 Aug 2003 and 24 Feb 2005.

Figure 3: Scatterplot with marginal histograms showing the estimated distance moved *versus* time since tagging for *P. semifasciata* in some popular fishing spots within San José Gulf ( $n = 57$ ) (Larralde Beach, San Román Point, Conos Point and Gales Point). Solid circles represent truncated distances ( $>400$  m). The number and range of the truncated distances is indicated to their right.

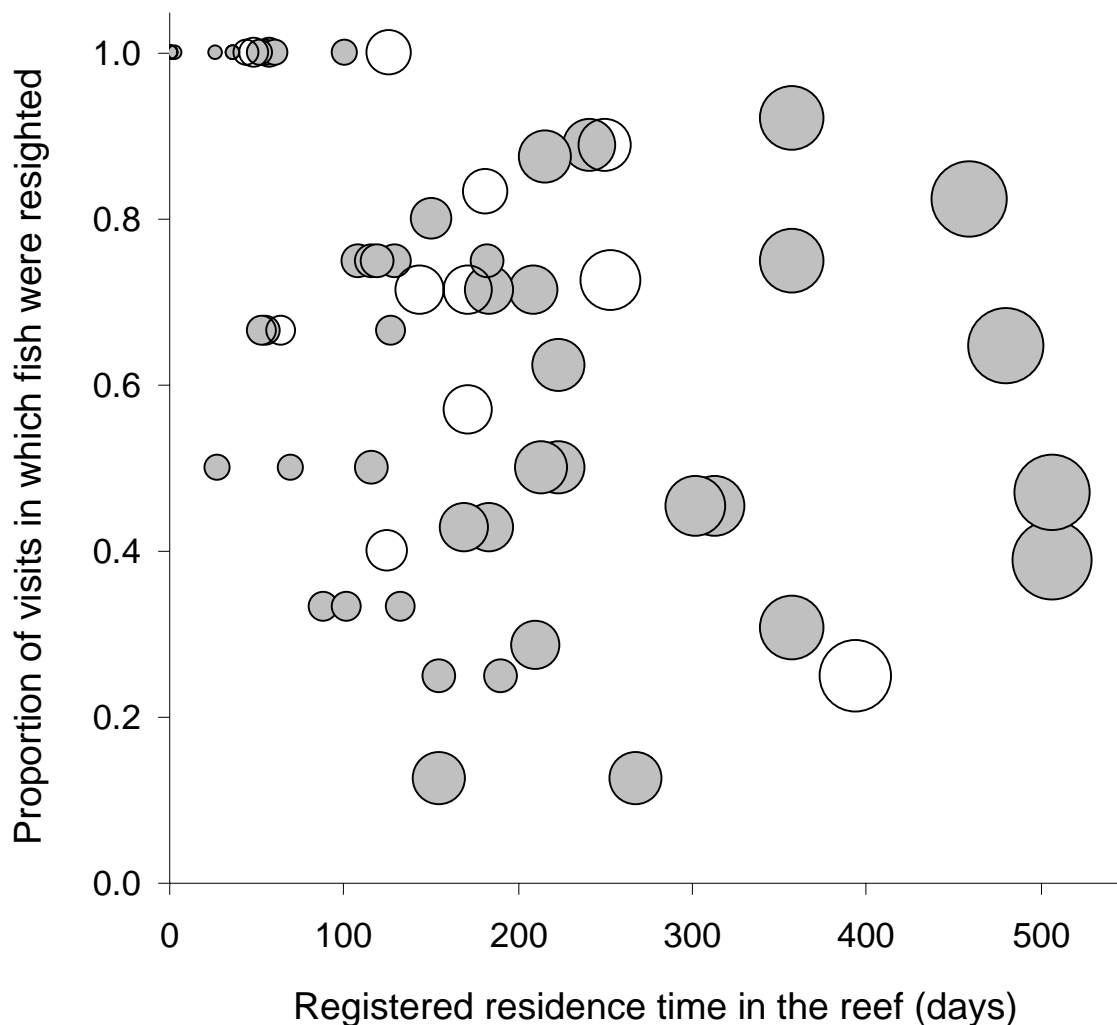
Figure 4: Evaluation of three predictions about mobility patterns in *P. semifasciata*: (1) fish that relocate or emigrate are smaller than those that remain in the reef; (2) smaller fish move farther from the tagging sites; (3) grey or transitional fish have longer residence times than yellow individuals. Shaded areas represent 95% confidence regions for cumulative distributions under the null hypothesis, approximated by Monte Carlo permutations (5,000 replicates). The solid lines represent the empirical cumulative distribution.

Figure 5: Frequency distribution of days at liberty for fish recaptured (white bars), resighted (grey bars) or both (black bars) in the same reef of tagging within San José and Nuevo gulfs. Only the last record was included for fish registered multiple times. Fish double- and single tagged were considered. For reference, the solid and dotted lines show, respectively, the probability that a double-tagged fish retains the two tags or one tag, assuming a constant tag shedding rate (based on results by Venerus *et al.* 2013).



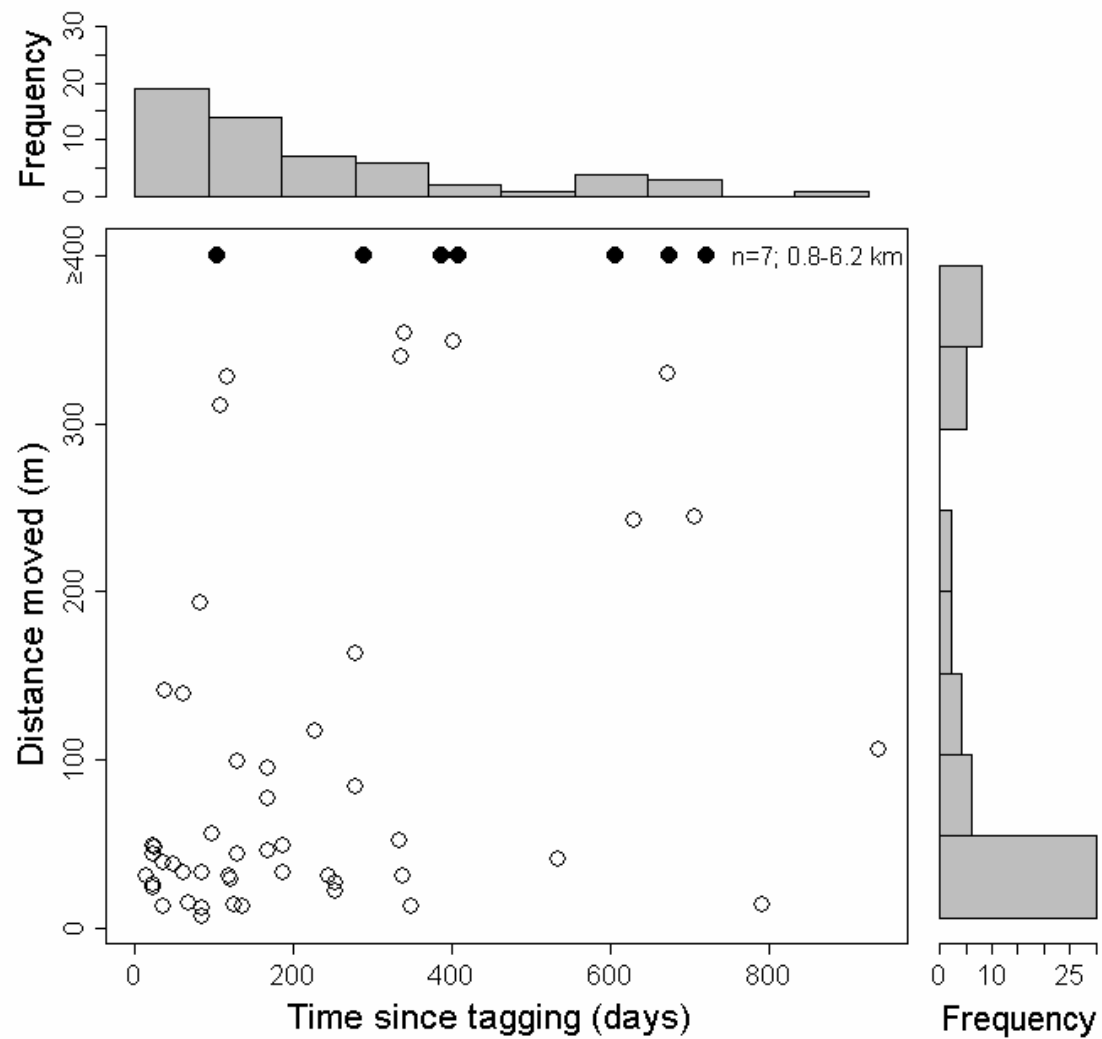
Venerus et al.

Figure 1: Study area showing the tagging locations within Nuevo and San José gulfs, Península Valdés. The reefs are numbered and their positions are indicated by open circles. The dotted line indicates the southern limit of the reserve within Golfo Nuevo.



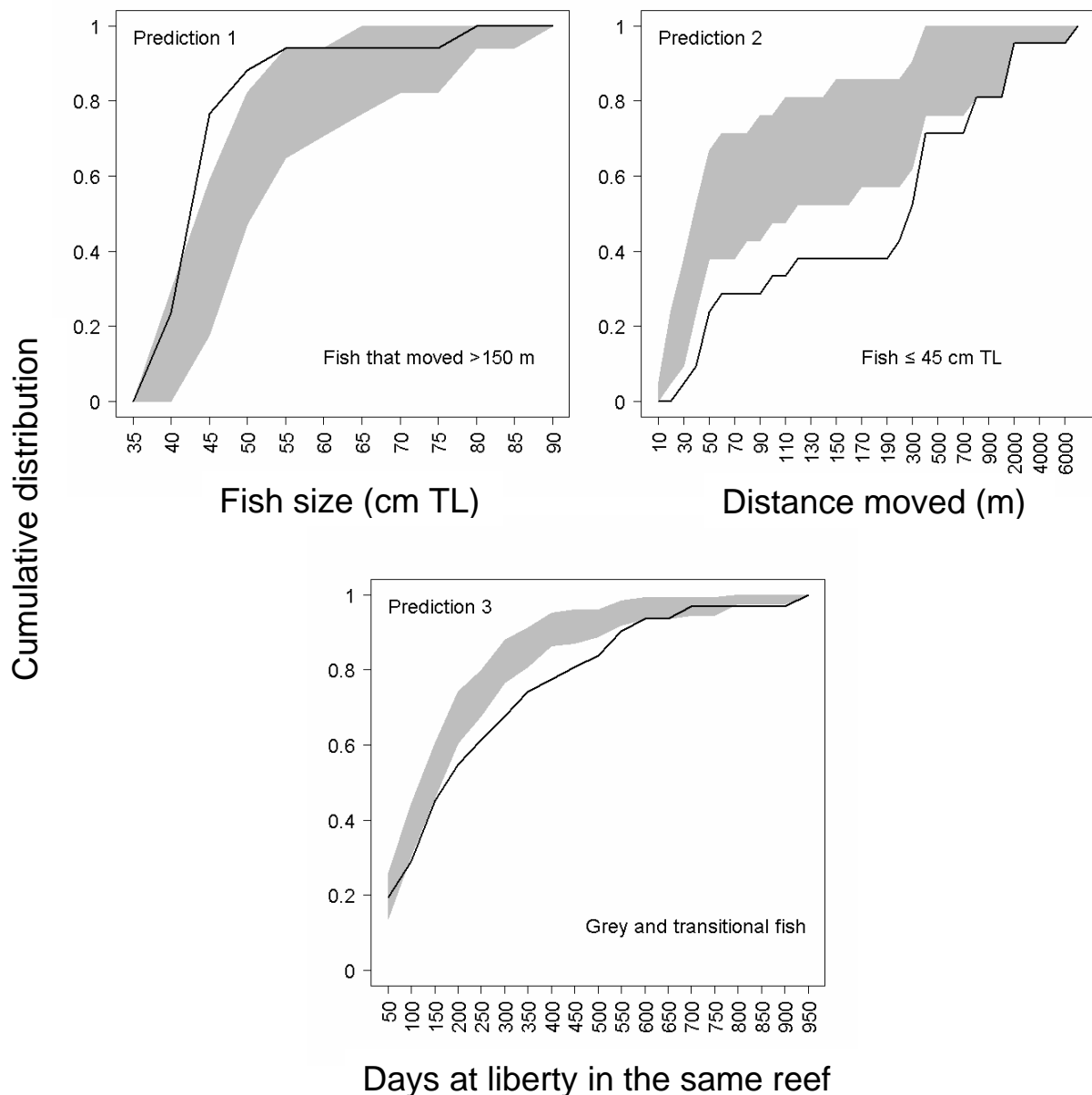
Venerus et al.

Figure 2: Proportion of visits in which each fish was resighted *versus* residence time in the reef for double-tagged *P. semifasciata*. Each bubble represents one individual; with its size proportional to the number of visits made between the first and last resighting (from 1 to 18). Data are for Reef #11 (white bubbles), surveyed by scuba 17 times between 24 Jan 2004 and 10 Aug 2005, and for reef #36 (grey bubbles), surveyed 24 times between 11 Aug 2003 and 24 Feb 2005.



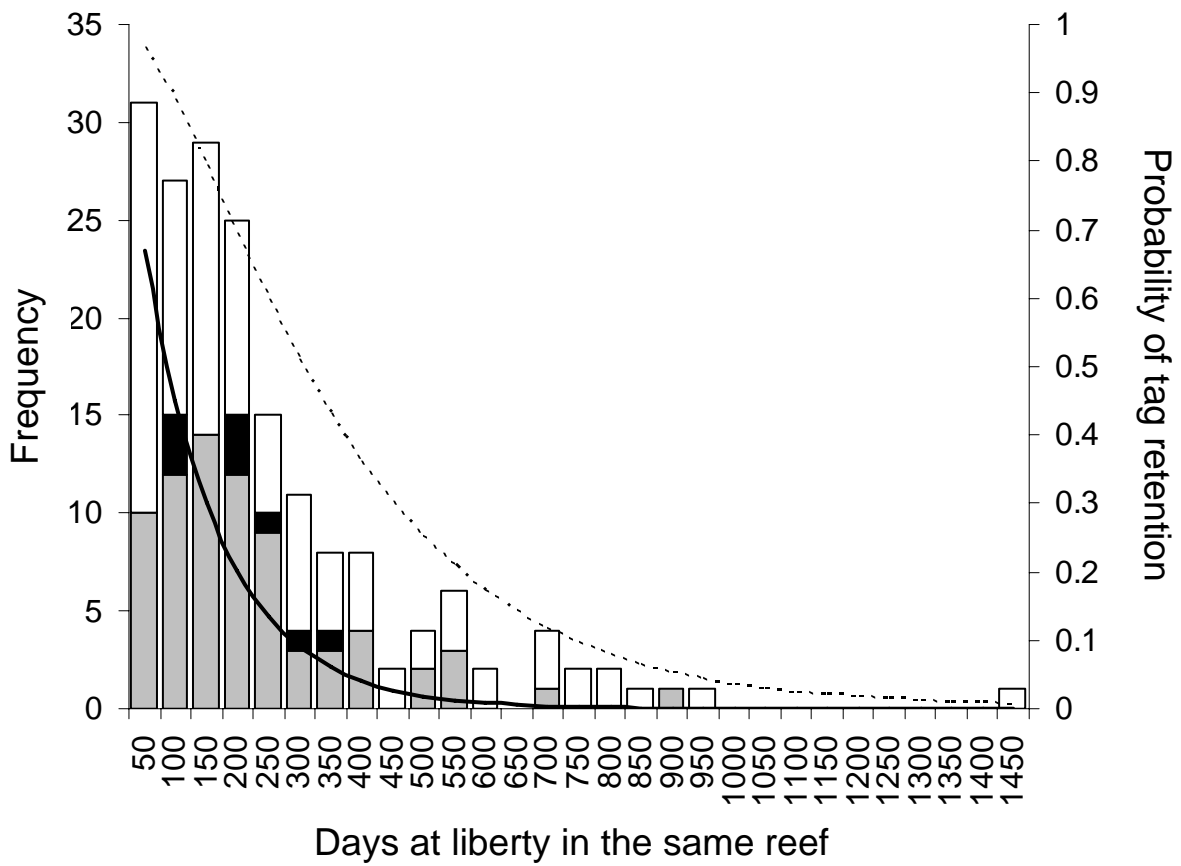
Venerus et al.

Figure 3: Scatterplot with marginal histograms showing the estimated distance moved *versus* time since tagging for *P. semifasciata* in some popular fishing spots within San José Gulf ( $n = 57$ ) (Larralde Beach, San Román Point, Conos Point and Gales Point). Solid circles represent truncated distances (>400 m). The number and range of the truncated distances is indicated to their right.



Venerus et al.

Figure 4: Evaluation of three predictions about mobility patterns in *P. semifasciata*: (1) fish that relocate or emigrate are smaller than those that remain in the reef; (2) smaller fish move farther from the tagging sites; (3) grey or transitional fish have longer residence times than yellow individuals. Shaded areas represent 95% confidence regions for cumulative distributions under the null hypothesis, approximated by Monte Carlo permutations (5,000 replicates). The solid lines represent the empirical cumulative distribution.



Venerus et al.

Figure 5: Frequency distribution of days at liberty for fish recaptured (white bars), resighted (grey bars) or both (black bars) in the same reef of tagging within San José and Nuevo gulfs. Only the last record was included for fish registered multiple times. Fish double- and single tagged were considered. For reference, the solid and dotted lines show, respectively, the probability that a double-tagged fish retains the two tags or one tag, assuming a constant tag shedding rate (based on Venerus *et al.*, 2013).



**Supplementary material for *Venerus et al.***

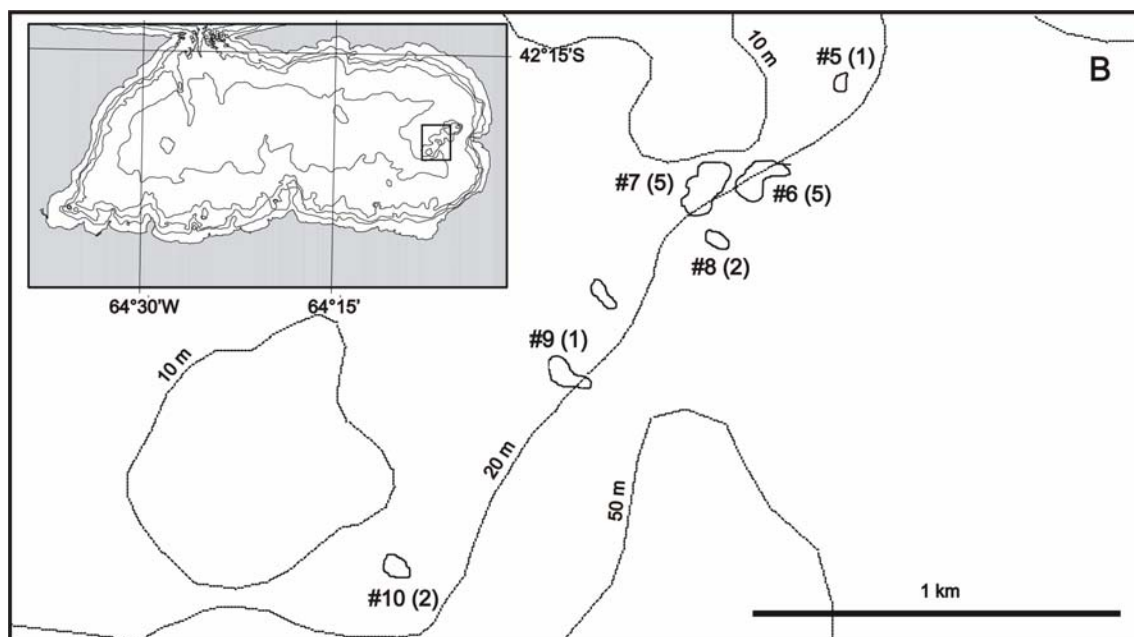
Table S1: Schedule of field work by our project staff in each fishing spot within San José (SJ) and Nuevo (N) gulfs. The numbers indicate the months in which the reefs were surveyed. Underlined: angling and scuba diving; bold: scuba diving; plain: angling.

Fishing Spot	Reef ID	Year				
		2001	2002	2003	2004	2005
Esfinge Point (SJ)	1			<u>4</u> , 7		<u>2</u>
San Román Point (SJ)	2–4	<u>10</u>	<b>1</b> , <u>2</u> , <u>4</u> , <u>7</u> , <u>8</u> , <u>10</u> , <u>12</u>	<u>2</u> , 3, <u>4</u> , <u>7</u> , <u>8</u> , <u>10</u> , <b>12</b>	<u>2</u> , 4, <u>8</u>	<u>2</u> , <u>8</u>
Conos Point (SJ)	5–10			1, 7, <u>11</u> , 12	1, 8, 12	
Camp 39 (SJ)	11		<u>3</u> , <u>5</u> , <u>7</u> , <b>9</b> , <u>11</u> , 12	<u>1</u> , <u>3</u> , <u>5</u> , <u>7</u> , <u>9</u> , <u>11</u>	<u>1</u> , <b>3</b> , <u>5</u> , <u>8</u> , <u>10</u> , <b>11</b>	<b>2</b> , <b>8</b>
Fracasso Beach (SJ)	12–14		<u>2</u> , <u>5</u> , <u>7</u> , <b>9</b> , <u>11</u> , <u>12</u>	<u>1</u> , <u>3</u> , <u>5</u> , <u>7</u> , <u>9</u> , <u>11</u>	<u>1</u> , <u>3</u> , <b>5</b> , <b>8</b>	<b>8</b>
Fracasso's Prows (SJ)	15–17				1	
Gales Point (SJ)	18–20			7, 9, 12	1, 12	
Larralde Beach (SJ)	21–31		5, 10, 11, 12	1, 2, 3, 4, 7, 10, 11, 12	1, 2, <u>3</u> , 4, 6, 8, 12	
Mouth (SJ)	32–35			1, 3, 4, 7	2	
East Point (N)	36			<u>8</u> , <u>9</u> , <u>10</u> , <u>12</u>	<b>1</b> , <u>2</u> , <u>3</u> , <u>4</u> , <u>6</u> , <u>7</u> , <u>8</u> , <u>9</u> , <b>10</b> , <u>11</u> , <u>12</u>	<b>1</b> , <b>2</b>

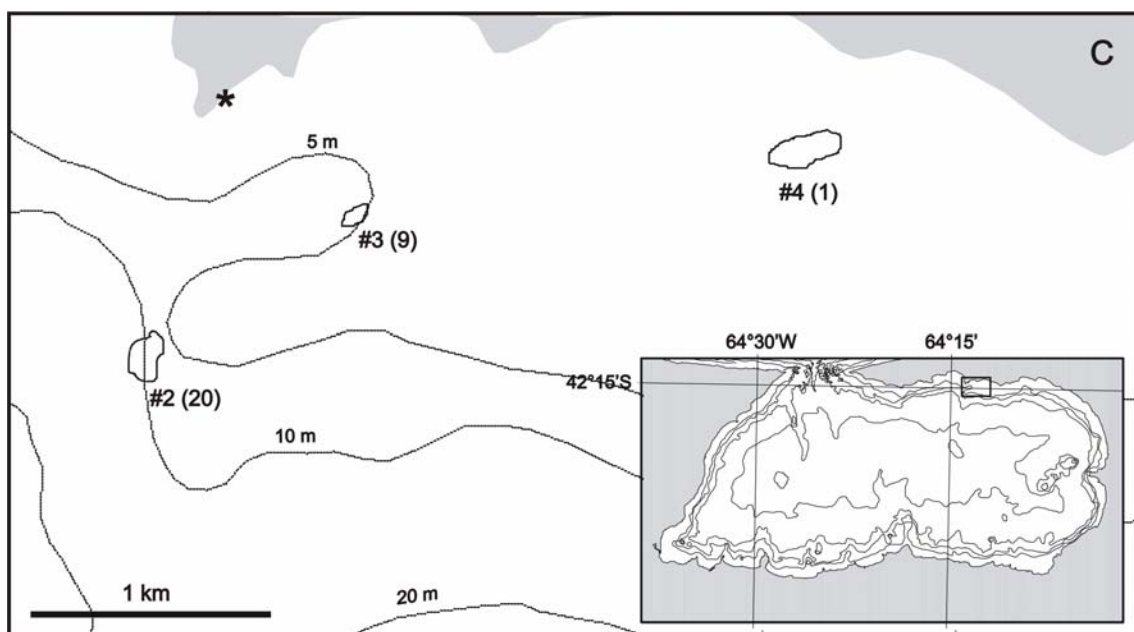
Table S2: *Pseudopercis semifasciata* recaptured >1 km from the tagging site. Individual code composed of chromatic phenotype (Y: yellow, G: gray) and fish size at tagging (cm TL). The asterisk indicates a fish angled in reef #2, displaced 1.13 km and kept 24 hrs within a cage to evaluate the effect of tagging, before being released. The location of the unknown reef within Bahía Nueva was estimated approximately based on references provided by a recreational angler.

ID Code	Time at liberty (days)	Distance displaced (km)	Spot / reef of tagging	Recapture reef
Y40	387	1.05	San Román Point / # 2	San Román Point / # 3
Y43	289	1.13	San Román Point / *	San Román Point / # 2
G80	606	1.20	Larralde Beach / # 27	Larralde Beach / # 25
Y40	675	1.51	Larralde Beach / # 25	Larralde Beach / # 29
G59	60	2.30	East Point # 36	Bahía Nueva / unknown
Y41	104	6.17	Conos Point / # 6	Camp 39 / # 11

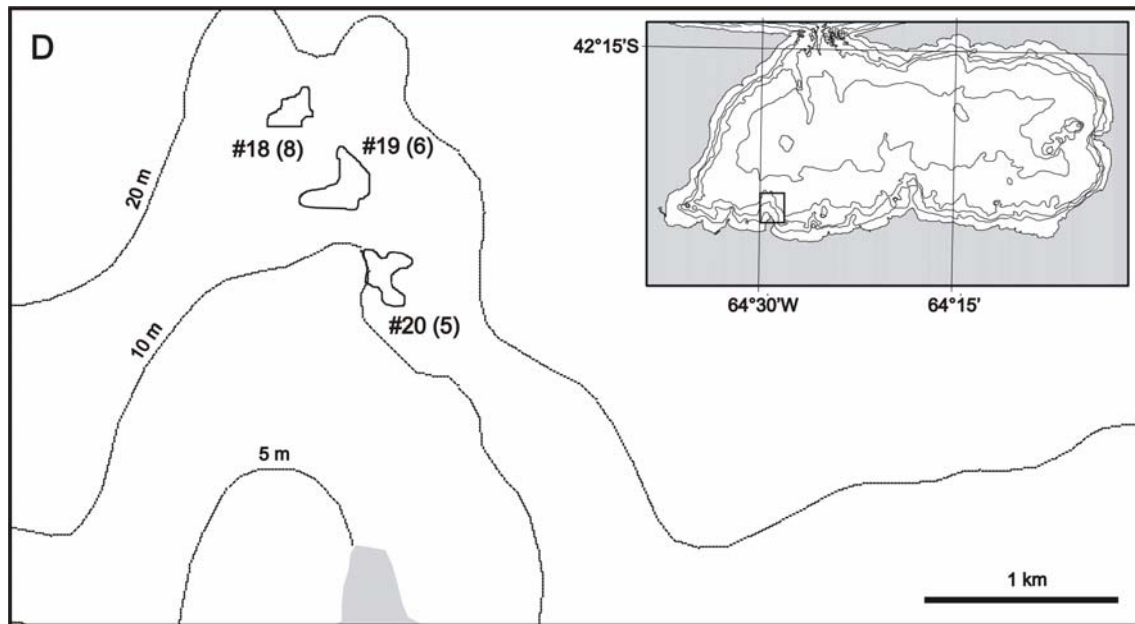




Reef	#6	#7	#8	#9	#10
#5	0.34	0.44	0.54	1.09	1.77
#6		0.12	0.20	0.74	1.43
#7			0.15	0.65	1.34
#8				0.55	1.23
#9					0.68



Reef	#2	#3	#4
*	1.14	0.71	2.61
#2		1.05	3.08
#3			2.11



Reef	#19	#20
#18	0.45	0.94
#19		0.50

Fig. S1: Spatial distribution of patchy reef areas (filled lines) and angling effort in four fishing spots located in San José Gulf, between October 2001 and September 2005. A: Larralde Beach; B: Conos Point; C: San Román Point; and D: Gales Point. The number of trips made to each reef is shown in parenthesis. In Larralde Beach, we used italics to indicate the minimum number of trips in reefs also used by fishing guides. The asterisk in San Román Point shows the location of a cage in which some fish were observed prior to release. The table below each map shows the estimated between-reef distances, in km.

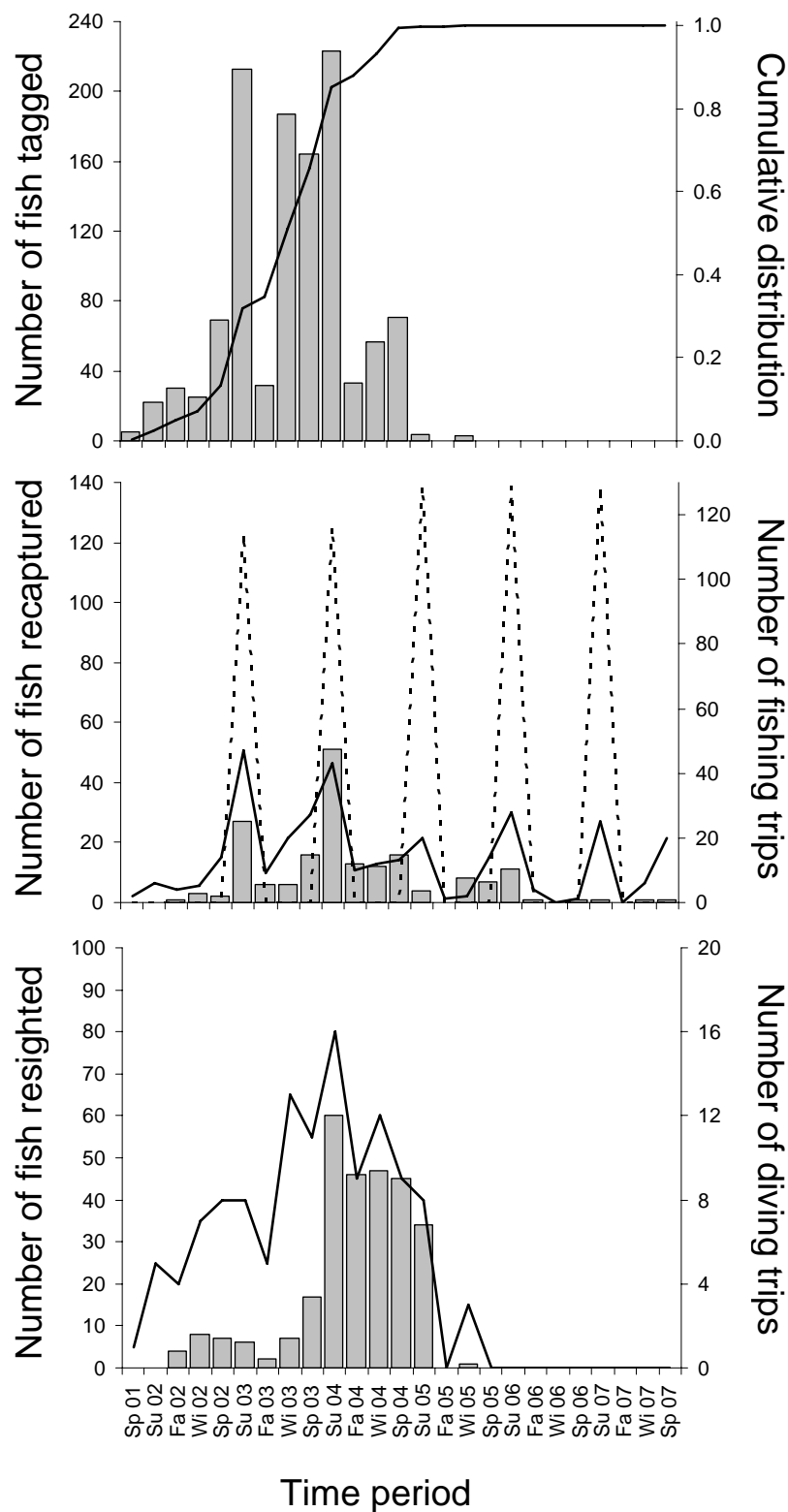


Figure S2: Number of fish tagged, recaptured and resighted in San José and Nuevo gulfs, over the entire study (grey bars). Middle panel: the solid line shows the fishing effort exerted by us in San José and Nuevo gulfs and by the fishing guides operating off

Gales Point, Larralde Beach and in the mouth of San José Gulf; the dotted line shows the number of fishing trips estimated for boat owners in the same three fishing spots. Lower panel: the solid line shows the number of diving trips conducted by us in the two gulfs.

Although the estimated angling effort by boat owners off Larralde Beach, off Gales Point and in the mouth of San José Gulf, during the angling season (late December to mid March), was more than twice that of research and charter trips, its impact on the number of recoveries was lower (mid panel). Resightings increased disproportionately between December 2003 and February 2005, when fish were double-tagged in reefs #11 and #36 (lower panel).



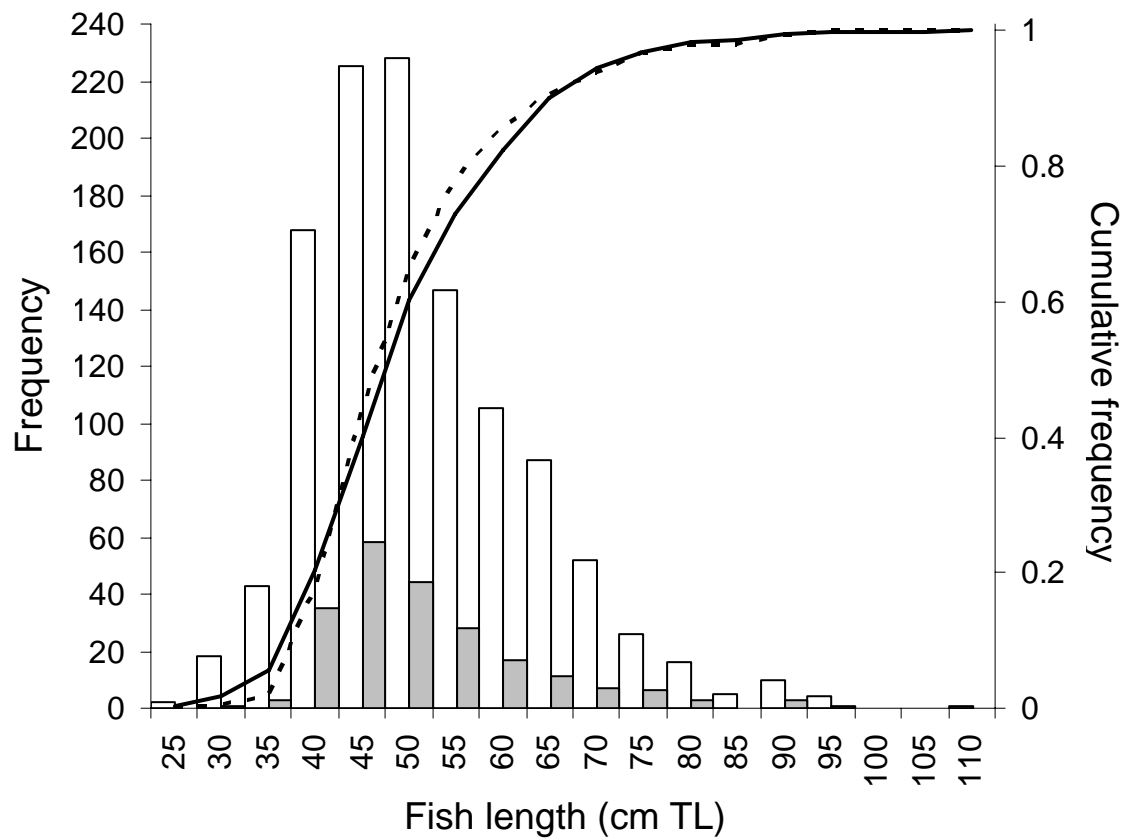


Fig. S3: Size frequency and cumulative distributions of *P. semifasciata* tagged (n = 1138) and recaptured or resighted (n = 218) within Nuevo and San José gulfs. White bars and black solid line: fish tagged; grey bars and dotted line: fish recaptured or resighted.