

Journal Pre-proof

Geophysical evidence of first stages of inflation in Domuyo volcanic center in northwestern Neuquén province, Argentina

Laura B. Godoy, Silvina Nacif, Marianela Lupari, Héctor P.A. García, Sebastián Correa-Otto, Iván Melchor, Stefanie N. Pechuan, Juan P. Ariza, Mario Gimenez, Alberto Caselli

PII: S0895-9811(20)30237-6

DOI: <https://doi.org/10.1016/j.jsames.2020.102694>

Reference: SAMES 102694

To appear in: *Journal of South American Earth Sciences*

Received Date: 3 February 2020

Revised Date: 2 June 2020

Accepted Date: 4 June 2020

Please cite this article as: Godoy, L.B., Nacif, S., Lupari, M., García, Hé.P.A., Correa-Otto, Sebastián., Melchor, Ivá., Pechuan, S.N., Ariza, J.P., Gimenez, M., Caselli, A., Geophysical evidence of first stages of inflation in Domuyo volcanic center in northwestern Neuquén province, Argentina, *Journal of South American Earth Sciences* (2020), doi: <https://doi.org/10.1016/j.jsames.2020.102694>.

This is a PDF file of an article that has undergone enhancements after acceptance, such as the addition of a cover page and metadata, and formatting for readability, but it is not yet the definitive version of record. This version will undergo additional copyediting, typesetting and review before it is published in its final form, but we are providing this version to give early visibility of the article. Please note that, during the production process, errors may be discovered which could affect the content, and all legal disclaimers that apply to the journal pertain.

© 2020 Published by Elsevier Ltd.



Geophysical evidence of first stages of inflation in Domuyo volcanic center in northwestern Neuquén province, Argentina.

Laura B. Godoy^{1,2}; Silvina Naci^{1,2}; Marianela Lupari^{1,2}; Héctor P. A. García^{1,2}; Sebastián Correa-Otto^{1,2}; Iván Melchor^{3,4}; Stefanie N. Pechuan^{1,2}; Juan P. Ariza^{1,2}; Mario Gimenez^{1,2}; Alberto Caselli^{3,4}.

¹CONICET (Consejo Nacional de Investigaciones Científicas y Técnicas), Av. Rivadavia 1917 (C1033AAJ), Argentina.

²Instituto Geofísico Sismológico F. Volponi, FCEFyN, Universidad Nacional de San Juan (UNSJ) Ruta 12 km 17 Marquésado, Rivadavia, San Juan, Argentina.

³Universidad Nacional de Río Negro. Instituto de Investigación en Paleobiología y Geología. Río Negro, Argentina

⁴ CONICET. Instituto de Investigación en Paleobiología y Geología. Río Negro, Argentina.

Abstract

Cerro Domuyo, in northwestern Neuquén province of Argentina, shows notable geothermal activity, although it is located at a considerable distance from the actual volcanic arc. Many studies have been developed in this area with the aim of investigating its geothermal field. Despite these efforts, the characterization of the dynamic activity in the area is still poorly known. This work shows the results of a network of seismological stations which registered volcano-tectonic, long-period and hybrid events. A large number of volcano-tectonic events concentrated mostly in the Cerro Domuyo geothermal area were detected. These events can be divided into two groups, those occurred at shallow depths below the geothermal area and those at greater depths below the high region of Cerro Domuyo. Shallow events were located around the Manchana Covunco fault and many of them were particularly clustered at its intersection with the Humazo fault. Seismicity in the area shows that these faults are continually active due to, fluid movement, as was evidenced by the hydrothermal manifestation of the Humazo in 2003. Moreover, new studies provide evidence that the Cerro Domuyo is experiencing and important inflation (Lundgren et al. 2018 and Astor et al. 2019) which is promoted by a magmatic body. Deep volcano-tectonic events are probably related to the inflation of the Cerro Domuyo by a magmatic body. Considering the large distance between the actual volcanic arc and the study region, and the high density of shallow volcano-tectonic events, it is highly likely that this magmatic body is increasing the geothermal activity. Additionally, the aeromagnetic anomaly over Cerro Domuyo. Evidence as thin magnetic crust of less than 6 km suggesting. A clear link between the geophysical results and the inflation in Cerro Domuyo. These manifestations are probably reflecting a first stage of geomorphological change in this region.

Key Words. *Volcanism; Domuyo; geothermal field; micro seismicity; thermal anomaly.*

1. INTRODUCTION

The subduction of the Nazca plate below the South American plate controls, among other factors, the growth rate of the Andes. Nazca plate subduction angle determines the increase in the seismicity in the flat subduction segment or the volcanic activity in the normal subduction segment. In response to this phenomenon high enthalpy geothermal fields heated by deep magmatic systems are developed in the western margin of South America (Cardoso et al.2010).In these areas, the presence of impermeable horizons seals the systems preventing the escape of the hot fluids allowing the development of deep reservoirs Thus, geothermal field where the meteoric waters that circulate through the permeable rocks is heated by a volcanic surge constitute a important reservoirs of renewable energy

In Argentina, seven high enthalpy zones are recognized as the most important in terms of stored energy (Pesce, 2015) Copahue and Domuyo (Neuquen province), Tuzgle (Jujuy province), Los Despoblados (San Juan province), Termas de Río Hondo (Santiago del Estero province), Los Molles and Peteroa (Mendoza province).

The study area, Domuyo geothermal field, comprises a high enthalpy system ($>220^{\circ}\text{C}$) located to the northwest of the Neuquén province on the western slope of the Domuyo volcanic complex (Figure 1). An important geochemical survey of the main thermal waters discharging in the southwestern part of the Cerro Domuyo was presented by Chiodini et al. (2014). These authors underlined the high value of thermal energy release from this site, which is the second highest measured-advective heat flux from any terrestrial hydrothermal system after Yellowstone.

Although the Cerro Domuyo is considered an extinct volcanic system (Pesce 2013), it abruptly started to inflate since 2014 to the present (Lundgren et al., 2018; Astort et al., 2019). In order to study these changes and, since seismic monitoring is probably one of the most robust tools to characterize dynamic activity in volcanos (Chouet, 1992; Chouet, 2003), a local seismological network was deployed for the first time at the Cerro Domuyo geothermal region. This network registered during the first stage of inflation between December 2015 and March 2016. Additionally, aeromagnetic data for this region was interpreted and Curie depth points were obtained. In this work, we present the registered seismic signals with special focus on the volcano-tectonic seismicity and its relation with the Curie depth points for the study area.

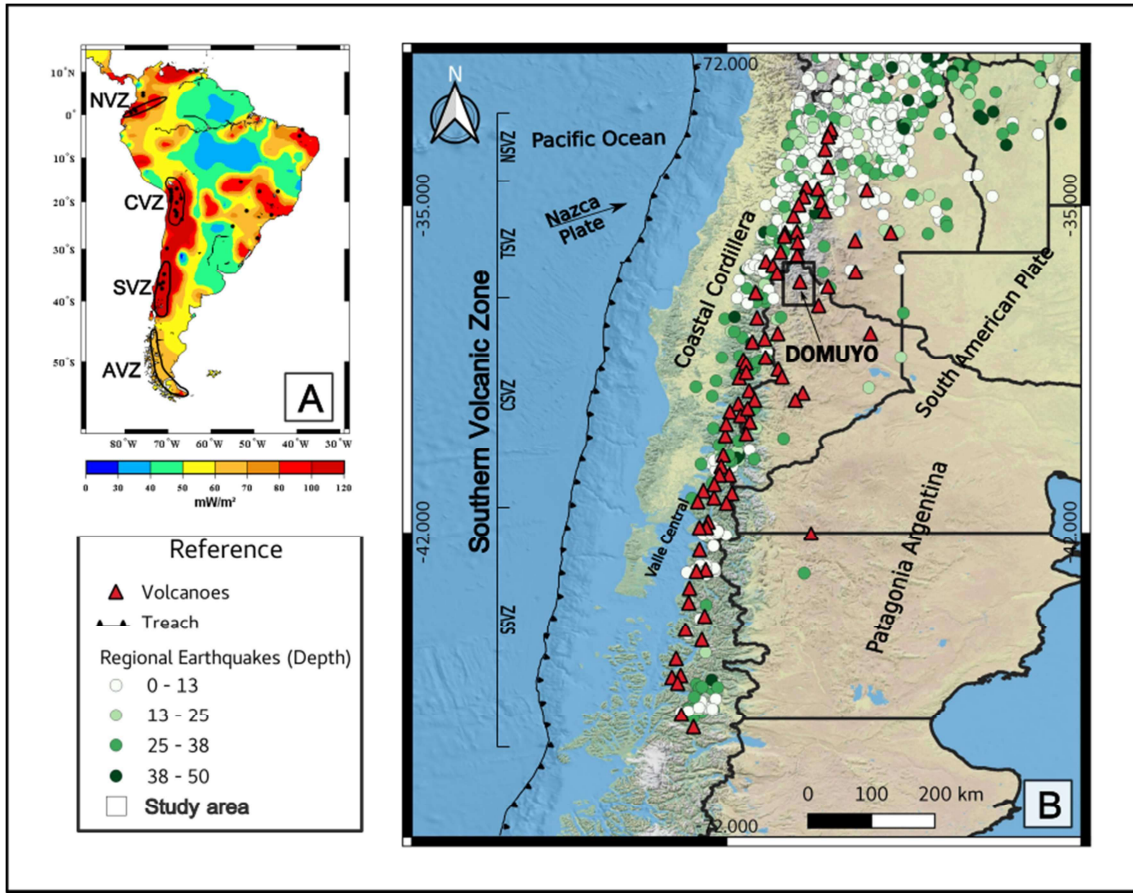


Figure 1: A) Heat flow map of South America (Modified from Cardozo et al., 2010). In black lines, the Northern, Central, Southern and Austral Volcanic Zones are indicated. B) Arc and retroarc volcanoes and regional intraplate earthquakes (see reference for colour scale) up to 50 km depth from 1980 to 2018 (obtained from the National Earthquake Information Centre, USGS). Seismicity increases in the Andes, decreasing towards the south (SVZ).

2. SEISMO-TECTONIC SETTING

The study area is located in the Southern Volcanic Zone (SVZ) developed between 33° and 46°S (Figure 1). In this area the eastward normal-dip (~30°) of the Wadatti-Beniof zone controls the current arc related volcanic activity (Thorpe and Francis, 1979, Thorpe, 1984) and the high background heat flow. The SVZ is divided into four segments Northern segment (NSVZ: 33-34.5°S; Hildreth and Moorbath, 1988), Transition segment (TSVZ: 34.5-37°S; Tormey et al., 1991; Dungan et al., 2001), Central segment (CSVZ: 37-41.5°S; Hickey-Vargas et al., 1984, 1986, 1989; López-Escobar et al., 1995 a), and Southern segment (SSVZ: 41.5-46°S; López-Escobar et al., 1993). The Cerro Domuyo is located in the Central segment.

The Domuyo volcanic complex (Figure 2), the highest mountain in Patagonia, is placed at the northern edge of the Cordillera del Viento. Formed by a regional dome structure this anticline exposes in its nucleus the Neuquén basin basement rocks. Such fold forms a large dome that dips in four directions NW, NE, SE and SW (Lisjak, 2007). The Cerro Domuyo belongs to a series of young volcanoes located in the Andes Neuquinos. The set of volcanoes represented by the Cerro Domuyo, Monte la Cruzada, Tromen and Carrere are NW-SE oriented (Mas et al. 2011). The stratigraphy of the area is

characterized by continuous series of Jurassic, Cretaceous and Tertiary sedimentary rocks (Keidel 1925. Yrigoyen 1972, 1979). The northern extension of these outcrops reaches the Mendoza province. At the study region and surrounding areas. The Cordillera Principal can be divided into two sectors: the northwestern sector which is represented by the Guanacos fold and thrust belt (36°- 38.5°S) and the northeastern sector which is represented by the Chos Malal fold and thrust belt in the Barrancas block (70°- 70.5°W) where the Cerro Domuyo volcanic complex is emplaced.

The Chos Malal fold and thrust belt involves more than 4.500 m of sediments that were deposited in the Neuquén basin. The sedimentary and basement rocks were deformed during the Andean orogeny with the development of a thick-skinned fold and thrust belt. The basement rock, that can be observed on the western flank of the Cordillera del Viento, are mainly composed of Palaeozoic meta-sedimentary and volcano-clastic rocks that host Permian-Triassic igneous rocks of the Choiyoi Group (Stipanovic et al., 1968; Zappettini et al., 1987; Zanettini, 2001; Llambías et al., 2007).

The western foothill of the Cerro Domuyo presents a zone of high hydrothermal potential. Wich was preliminary studied through geophysical and geochemical measurements by the Japan International Cooperation Agency (JICA, 1983, 1984). Based on the analysis of water and gas samples of the Cerro Domuyo volcanic complex, Tassi et al. (2016) suggested the existence of two aquifers. These magmatic influenced water reservoirs are located at different depths between 400-600m and 2-3km and would be connected to each other. In this region, the structures can be divided into two systems, based on their orientation. The N-S system, includes the Manchana Covunco fault (Pesce, 1987) which is considered a continuation of the Atreuco Butalón fault. The W-E system is composed by a set of faults, which include from north to south, the Penitente fault (Mariot, 2008), and the El Humazo, Covunco and Cajón faults (Galletto et al., 2018). The Manchana Covunco normal fault within the N-S system orientation and dips to the east and hosts the main geothermal springs (Rincón de las Papas, El Humazo, Las Olletas, and Los Tachos). Galletto et al. (2018), proposed that this fault is responsible for the flow of hot fluids from a deep-located heat source and is acting as a source to the western area of the geothermal field through the west-east oriented normal faults.

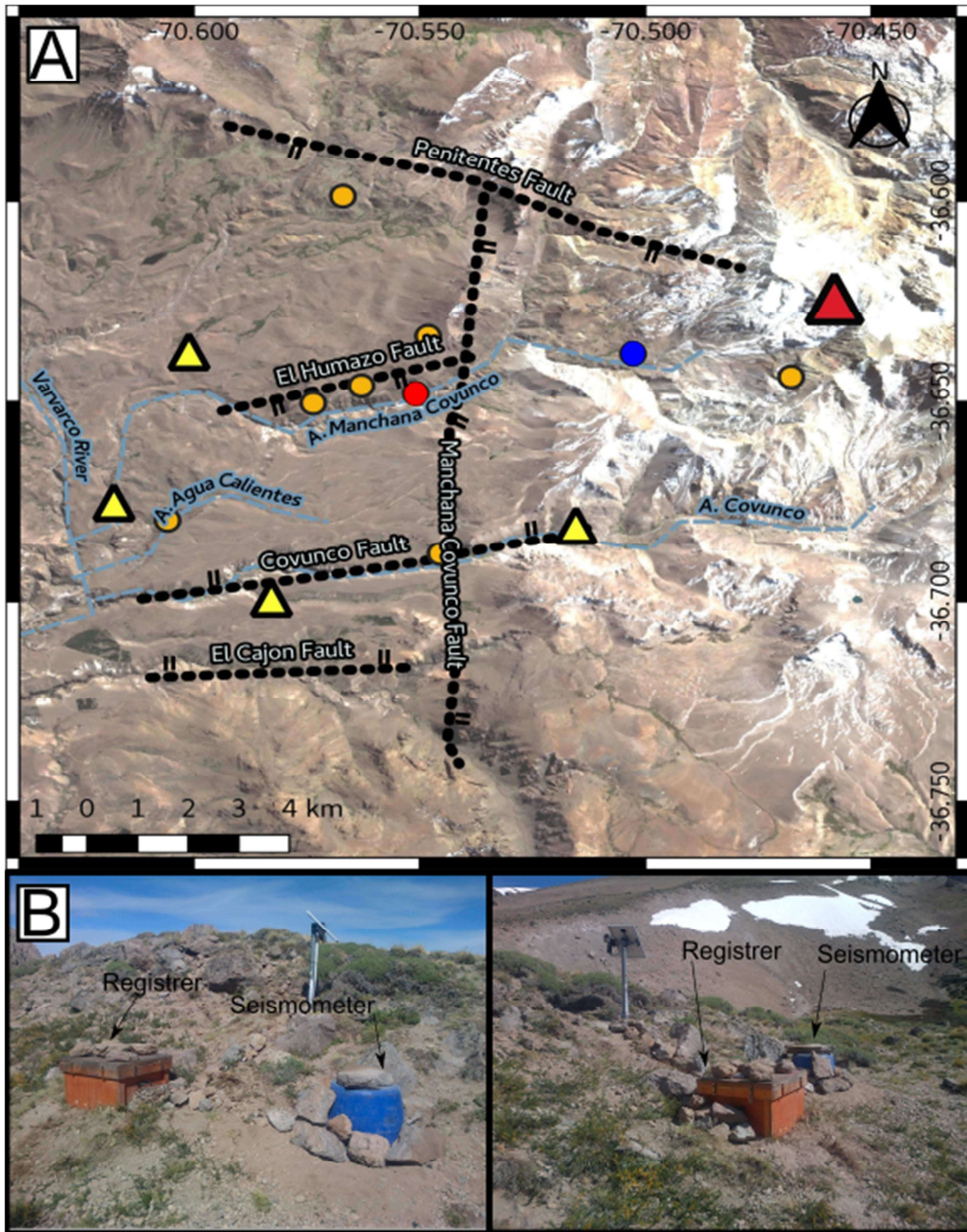


Figure 2: A) Satellite image of the Domuyo region. The red triangle represents the peak of the Cerro Domuyo and orange circles the water springs in the geothermal area. The red circle denotes the Humazo geothermal field and the blue circle the Bramadora geothermal field. The dotted lines represent the lineaments for the Penitentes fault (Mariot, 2008), El Humazo, Covunco and El Cajón faults (Galetto, et al., 2018) and the Manchana Covunco fault (Pesce, 1987). The locations of the seismological stations are shown with yellow triangles. B) Photographs showing the installation of two seismological stations of the Domuyo network

3. METHODOLOGY AND DATA ANALYSIS

The surrounding area of a volcano is a very dynamic system in which the flow of fluids, the pressure generated by them and the tectonic movement produce associated seismicity. These events can be detected with an adequate seismological network and depending on the origin of the signal a waveform with a characteristic frequency spectrum can be observed. These analyses provide key information to understand the behaviour of the volcano and its surroundings.

In this sense, and for the first time in the region with hydrothermal evidence (Southwest of Cerro Domuyo), a seismological network was installed. This network consisted in 4 short period vertical component stations with S13 seismometers (Geotech) (Figure 2). Registers, from December 14th 2015 to March 13th 2016, consisted in 100 samples/second continuous data in proprietary Reftek format.

These data were later converted to SEISAN format (Havskov and Ottemoller, 2001) and organized in a SEISAN data base. The complete data base was visualized and classified according to its waveform and its frequency domain. The analysis was achieved with 15-minutes length windows and events (example: Figure 3) were classified (Lahr et al. 1994) as volcano – tectonic (VT), long – period (LP) and hybrid (Hy) according to Lahr et al. (1994) and McNutt y Roman (2005)

The volcano-tectonic signals can be generated by brittle rock failure induced by fluid movements in the crust beneath the volcano. In this kind of earthquakes, the beginning of the signal is usually impulsive and can be identified with the arrival of the P wave. VT earthquakes have clear high-frequency P arrivals with peak frequencies above 15 Hz. The seismogram of a typical VT earthquake is dominated by the P and S phases, a very short coda and the difference between P and S arrivals of less than 5 seconds. Conversely, LP earthquakes are usually produced by injection of fluid in the crust and/or inside the volcano and are related to pressure changes during the unsteady transport of fluid (Lahr et al., 1994). In this work only VT events were located.

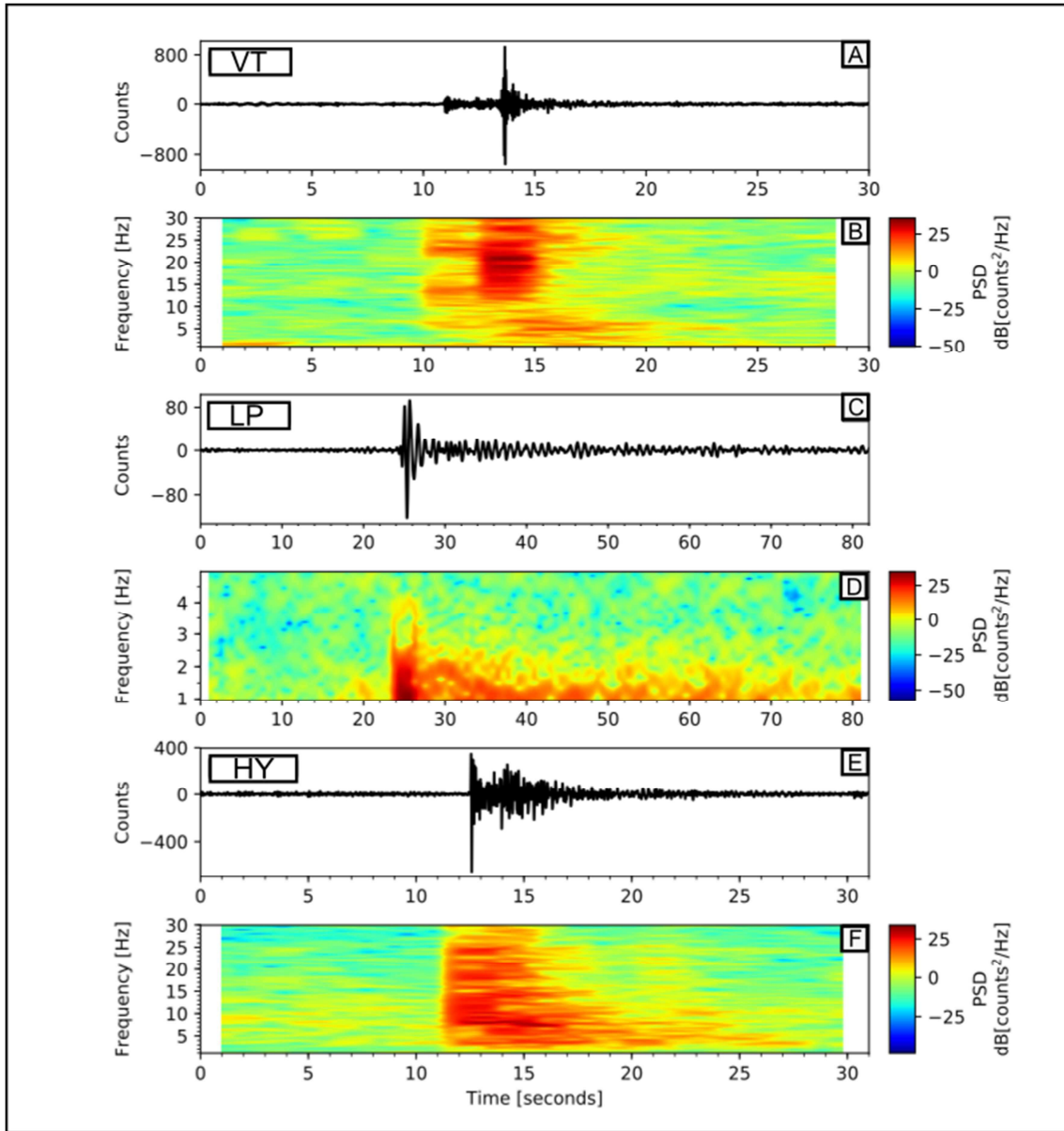


Figure 3: Example of the waveforms (top) and spectrograms (bottom) of the classified events, from the seismic record of the Domuyo stations. A and B correspond to VT, C and D to the LP, E and F to the HY events. The main event is marked on the frequency image with scale colours. The y-axis represents the value of the frequency in Hertz, and the x-axis the time in seconds.

P and S wave arrival identification was achieved using SEISAN multitrace view and the location parameters were obtained using Hypocenter 3.0 (Lienert, 1994). The hypocentral errors were calculated considering a confidence level of 90%. The theoretical travel times were obtained using the 1-D velocity model from Bohm et al. (2002), calculated for the Southern Andes between 36° and 40°S latitude. Nevertheless, the determination of the locations can be affected by the presence of significant lateral variations in the Earth that are not included in the one-dimensional velocity models. On the other hand, joint hypocenter determination (JHD) technique (Pujol, 2000) considers the neglected lateral velocity variations in the 1-D velocity model through the joint location determinations and station corrections. For this reason, in the seismicity results, only those determined with the JHD technique are shown. In order to obtain the local magnitude, the instrumental response for the seismometer – seismograph equipment was calculated with PDCC (Portable Data Collection Center software).

Unpublished aeromagnetic data acquired during 2004 - 2005, were interpreted. These data were measured in W-E lines every 2 km with N-S control lines spaced every 10 km. Sensors were located at an altitude of 1 km, therefore data resolution is 1 nT is expected. Total Magnetic Intensity values (TMI) were gridded using the minimum curvature technique (Briggs, 1974) at a cell size of 500 m and corrected for diurnal variation.

The dipolar nature of magnetic anomalies usually introduces some complexity in the interpretation of different geological structures. Consequently, to improve the interpretation of this anomaly, the residual magnetic anomalies were transformed using the reduced-to-the-pole (RTP) filter in the software Oasis Montaj® with inclination and a declination values of -38° and 6° , respectively. This filtering technique is used to centre anomalies above their source. The RTP is usually applied to the magnetic data to minimize the asymmetry caused by the non-vertical direction of magnetization assuming that the remaining magnetism is negligible compared to the induced one (Baranov, 1957; Phillips, 2007).

The magnetic crust can be represented by a horizontal plate of infinite lateral extension, whose roof, base and centre are at depths Z_t , Z_b and Z_c , respectively. The roof (Z_t) and the centroid (Z_c) of the magnetic basement were calculated from the radial power spectrum of the magnetic anomalies (Blakely, 1995) applying the method of Tanaka et al. (1999). In these calculations, the base of the plate (Z_b) (depth to the Curie point) is determined by equation (1)

$$Z_b = 2Z_c - Z_t \quad (1)$$

The depths Z_t and Z_c are estimated by a linear regression of the high and frequency values of the average radial spectrum (Tanaka et al., 1999; Espinosa-Cardena and Campos-Enriquez et al., 2008; Hsieh et al., 2014).

It should be clarified that the Curie temperature depends on the mineralogy of the magnetic bodies. The intensity of the magnetization is controlled by the magnetization of the magnetic phases present and by its volume fraction in the crust. Different minerals have different Curie temperatures and this requires different locations of the Curie isotherm that limits the thickness of the magnetic crust.

Thus, a Curie surface may not be an isothermal surface.

The calculation of the Curie depth was carried out considering the aeromagnetic data through the CuDePy program (Soler, 2015). This software carried out at the Instituto Geofísico Sismológico Volponi (IGSV) works in a Python platform.

For this contribution the long wavelengths of the total magnetic field in different variable windows were analysed, covering the aeromagnetic data area (Figure 4). As a result Z_t and Z_b depths were assigned to the coordinates of each window centre (Table 1).

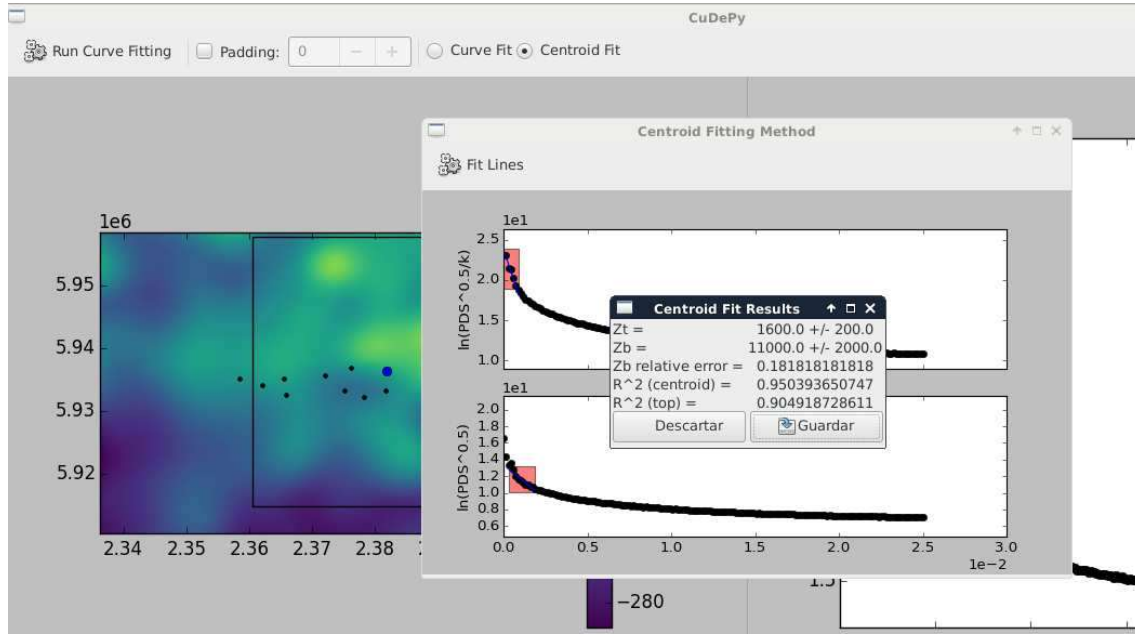


Figure 4: Curie point depth calculation example with CuDePy software. Black dot in the left window represents the obtained depths. CuDePy operates in variable windows looking for the optimal size for each region.

x	Y	Window Width (m)	Z _t (m)	Z _{t_{err}} (m)	Z _b (m)	Z _{b_{err}} (m)
2358478	5935132	42818	1800	200	13000	2000
2362109	5934130	42818	1900	200	10000	1000
2365489	5935132	42818	1400	100	9000	1000
2365865	5932628	42818	2100	200	12000	2000
2372125	5935633	42818	1900	200	11000	2000
2376256	5936885	42818	1600	200	10000	2000
2375130	5933254	42818	1900	200	9000	1000
2378259	5932253	42818	1300	100	11000	1000
2381765	5933379	42818	1600	200	11000	2000
2381890	5936384	42818	1600	200	11000	2000
2385897	5934005	42818	1260	90	12000	1000
2387399	5935382	42818	1500	200	11000	1000
2384519	5936631	42818	1500	200	11000	2000

Table 1: Curie point depth determination data. The plane coordinates of each point, the width of the window, Z_t , Z_b and the error generated in Z_b are represented.

4. **RESULTS AND DISCUSSION.**

A great variety of seismic events were detected by the Domuyo local network. Among these signals 60 hybrids, 106 long periods and 538 volcano-tectonic were identified.

From the 538 VT events and considering error in their location parameters, two selections of events were done: a “loose” one and a “tight” one. In the “loose” one we selected those events with error in their location parameters determination less than 8 Km, obtaining a total of 255 VT events. In the “tight” one we select those events with error in latitude and longitude less than 5 km and less than 2 km in depth error, obtaining a total of 133 VT events. For these events we find a Gaussian error distribution in their horizontal and vertical errors. In figure 5 and 6 we show two sets of events using two different depth colour scales. Also, in Table 1 of Appendix, we presented the 255 VT events in which the 113 VT events are included. The calculated local magnitude of the VT events varies from -1 to 1.5 (Histogram in Figure 5). The two selections show that all the events are surrounding the Cerro Domuyo, noteworthy the major concentration of VT events is at the geothermal field. These events were located over the Manchana Covunco fault or in the vicinity of that fault. Notably, the shallow events, (depth less than 3 km) occurred at the intersection of Manchana Covunco and Humazo faults.

Regarding errors, focal depth is one of the hardest parameters to determine as is evidenced by the greater vertical errors compared to the horizontal errors. The comparison of the events distribution with a more restrictive criterion, considering the “loose” and the “tight” selection, suggest that these are clustered at two different ranges of depths. A shallow group (78%) with event located above the 3.5 km depth and a deep group (6 events) with events located between 5 and 8 km depth (figure 6).

Considering the “tight” group, events with an error of less than 2 km in the vertical direction, there is a spatial relation with the El Humazo and La Bramadora geothermal manifestations (red and blue circles in Figure 2). The seismicity analysis from west to east (cross section C-D in figure 6), shows a clear tendency for the shallow seismicity to settle at the geothermal region delimited in Figure 4 with a red dotted box. Contrary, there is a lack of seismicity of similar focal depths below the Cerro Domuyo peak. This lack of events suggest that the shallow seismicity reflects a local effect mostly related to the widely documented geothermal activity (JICA 1983, 1984; Mas et al., 2009, Tassi et al., 2016). On the other hand, deeper seismicity (dark green stars in C-D cross section in Figure 6) located below and to the east of the peak of Cerro Domuyo, is probably a consequence of a greater scale effect recently evidenced (Tassi et al., 2016, Lundgren et al., 2018; Astort et al., 2019).

Volcanic events often occur in swarms, which are groups of many small events with similar magnitudes and locations. The number of VT events per day in the study area were distributed in many swarms with more than 10 events each one. The most prominent group (60 events) was placed near the documented activity associated at El Humazo geothermal explosion in 2003 (Mas et al., 2009).

As previously mentioned, LP events were not located but were counted per day and compared with VT events. The daily histogram for the duration of the experiment presented in Figure 7. Suggest no direct association between these events in time, at least for the experiment period.

The reduced-to-the-pole magnetic anomalies and two W-E curie profiles for the Cerro Domuyo and adjacent areas are presented in Figure 8. Two profiles were located above the Cerro Domuyo (AB cross section) and 11 km to the south (CD cross section). The RTP map shows high magnetic susceptibility zones probably are associated with paleo-magma chamber. According to the magnetic data, the thinnest magnetic crust (5 to 6 km) is located at the Cerro Domuyo zone while, to the south 9km or more are expected. This result is consistent with a shallower curie isotherm for the Cerro Domuyo region which point out a thermal anomaly in this region.

In Figure 9, we plot the “tight” selected events, the locations of the two aquifers (one aquifer at 600 m and the other at 2000-3000 m) identified by JICA in 1984 and the Curie isotherm obtained in this work. The VT events grouped in two depths, the great majority between 0.3 to 1.7 km in the vicinity of the aquifers, and the rest located between 6 km and 6.9 km depth

More recently, Tassi et al. 2016, affirms the existence of the aquifer nearest to the surface, and considers that the heat that is provided them comes from a magma source, whose location is unknown, but is actively degassed. Recent studies using interferometry techniques demonstrated an inflation of 12 cm / year (Lundgren et al., 2018) covering an area of more than 300 km² for the Cerro Domuyo region (Astort et al., 2019). These authors proposed a magma body at approximately 6 km depth to explain their observations. This chamber is consistent and correlates with deeper events located in this work. Probably, this magma body is changing the stress regime of the region activating deep seismicity and increasing significantly the geothermal activity evidenced by high- density shallow seismicity.

Pesce (2013) considers the Cerro Domuyo as an inactive volcano, whose last volcanic manifestation was at 0.11 my. Nevertheless, Tassi et al. (2016) detected magmatic degassing from geochemical analysis (and for a place near la Bramadora, yellow triangle in Figure 9), where mixing with the meteoric aquifer is not important. This finding seems quite unexpected for an inactive volcano.

The high seismicity and thermal anomalies found in this work for the Domuyo region are in correlation with recent studies in the area (Tassi et al., 2016, Lundgren et al., 2018 and Astort et al., 2019). These anomalies suggest the emplacement or a possible activation of a magmatic body at a depth of approximately 6 km. In order to understand more deeply these new findings and high density network is necessary in this emblematic region. Principally determine the origin of the deep VT events. In this regard, a broad band seismological network covering not only the geothermal region but also the Domuyo eastern region was deployed in December 2019. Data from this network is expected to be available by December 2020.

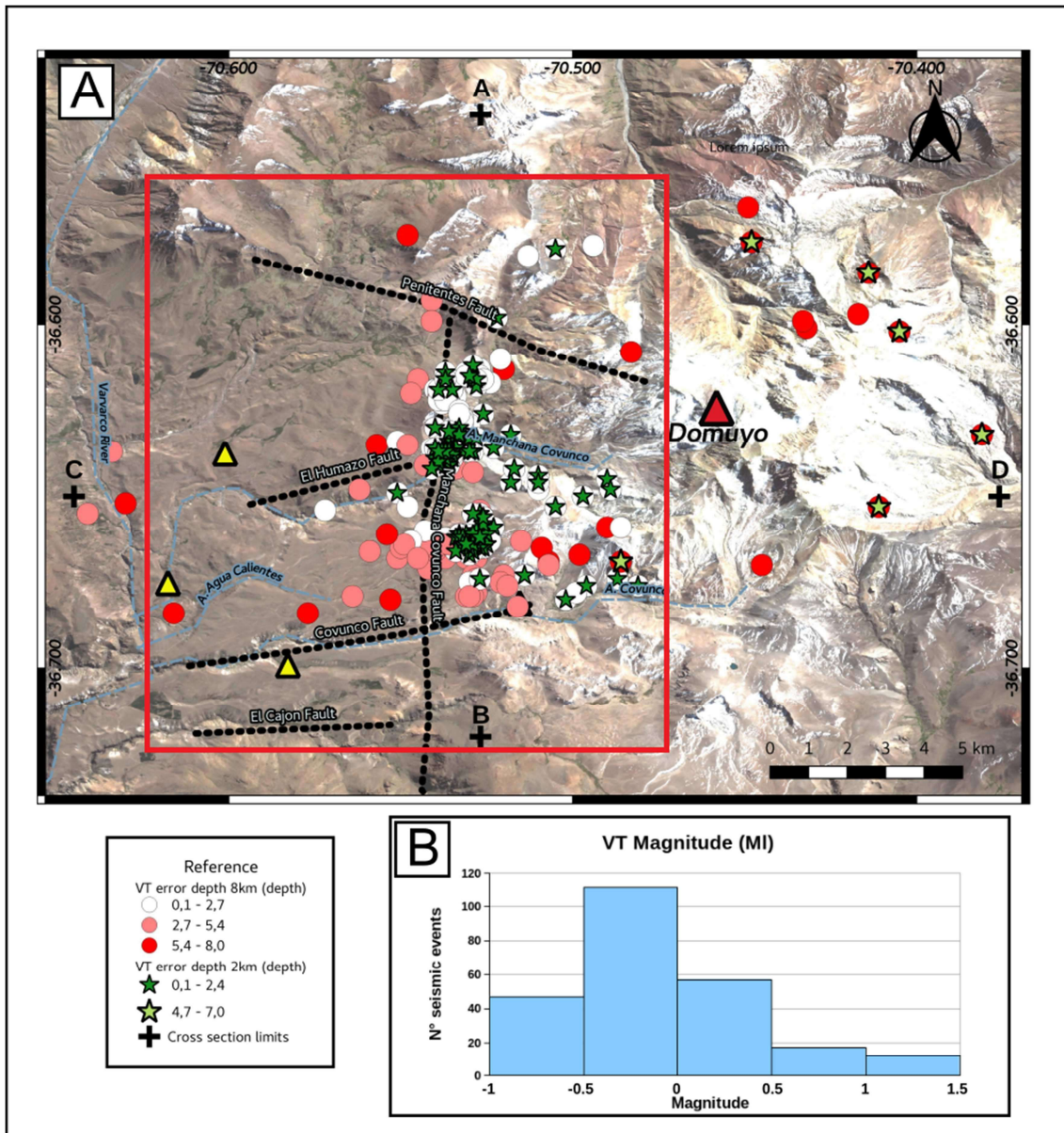
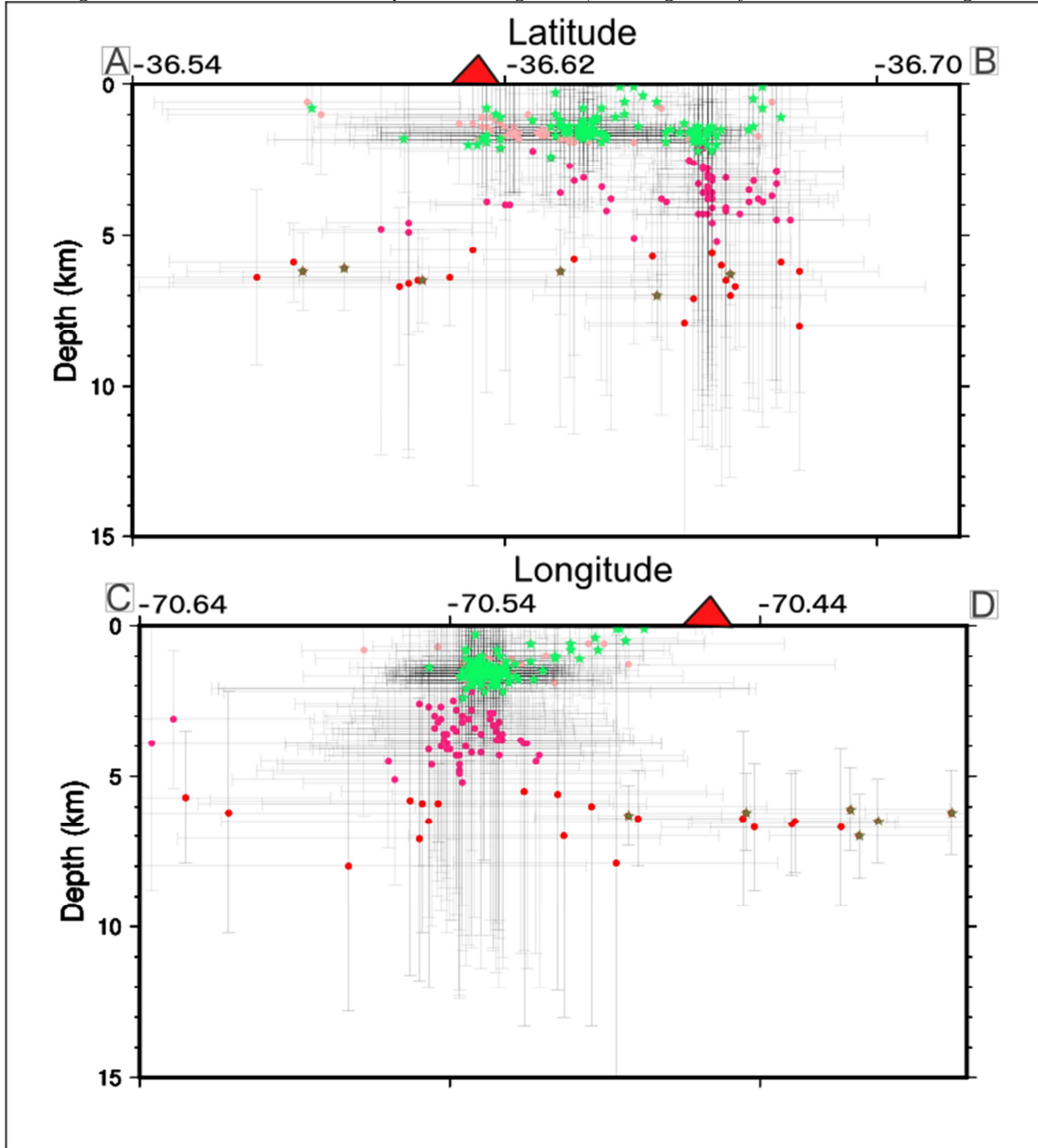


Figure 5: A) Location of the VT events found by the Domuyo network. Map: VT events epicenters (circles) plotted by depth showing their distribution according to the Manchana and Humazo faults. The geothermal region is delimited with a red box. The sections marked on the map with a cross are found in Figure 6. The locations of the

331 seismic stations are shown in yellow triangles. B) Histogram of the VT events magnitudes.



332

333 *Figure 6: Seismic events cross-sections. The hypocenters are shown as dots and stars, represented by different*
 334 *colours according to their depths and the error by which they were classified (see references in Fig. 5). Gray vertical*
 335 *and horizontal lines denote the error of each earthquake according to the orientation profile. The red triangle*
 336 *represents the Domuyo Peak.*

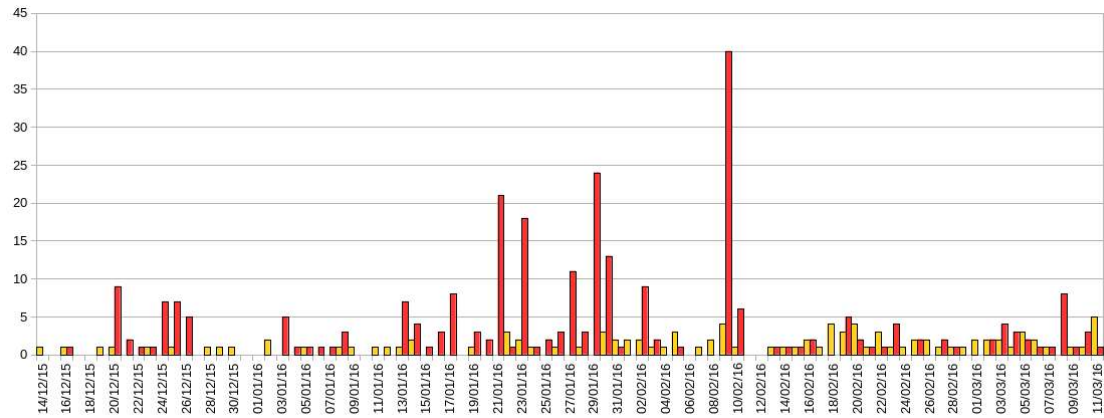


Figure 7: Graphic daily comparison for LP and VT events. Red bars represent VT events and yellow bars the LP.

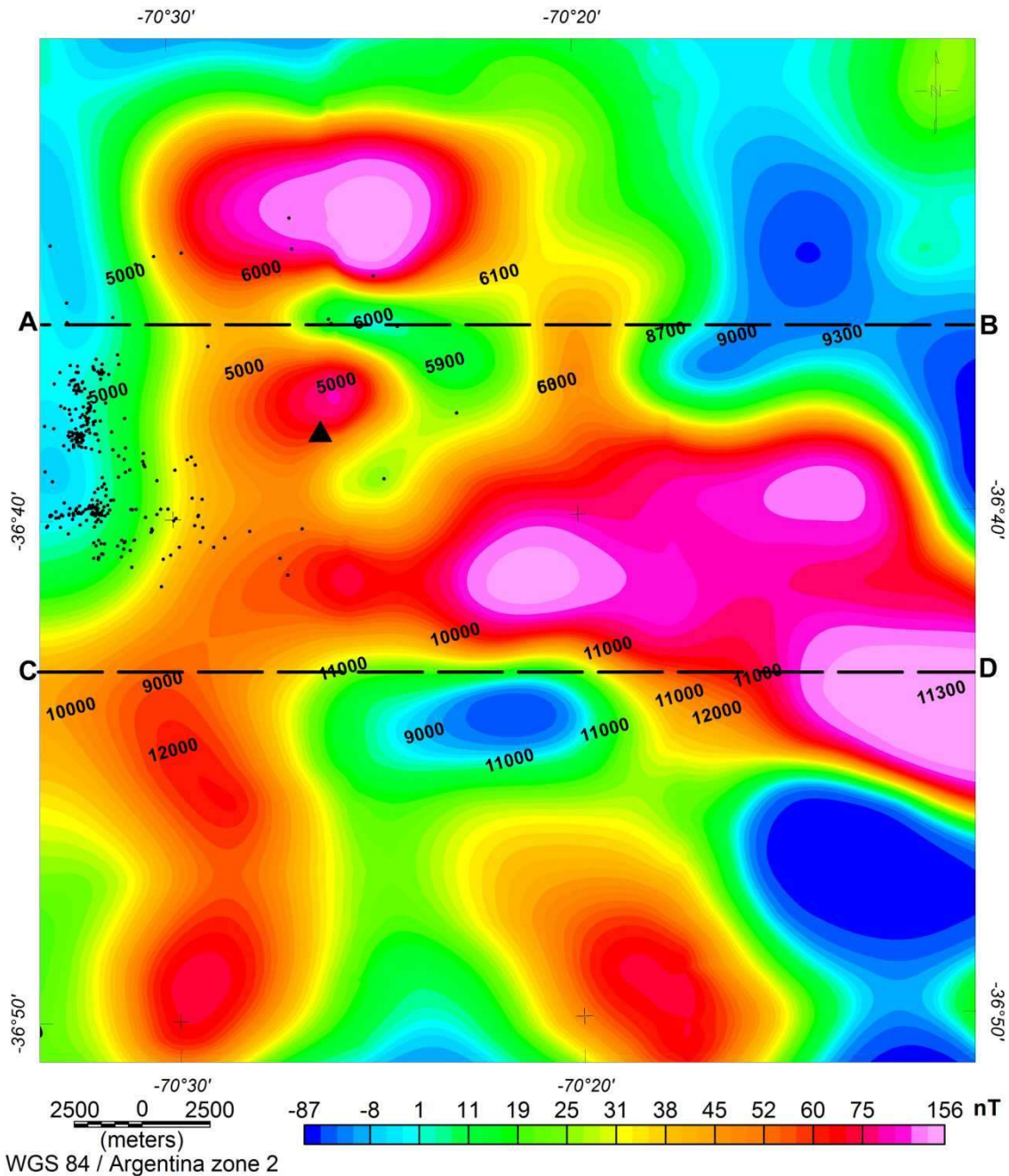


Figure 8: Reduced-to-pole magnetic anomalies for the area. Black numbers corresponds to the Curie depth point values. The northern profile shows a shallower magnetic crust. VT events are shown as black dots. The Domuyo peak is represented by a black triangle.

5. CONCLUSIONS

The Cerro Domuyo complex is experiencing considerable seismic activity, mostly on its western side in the geothermal region. The volcano-tectonic events are mainly located at depths less than 8 km and local magnitudes vary from -1 to 1.5. A large number (166) of registered hybrid and long-period events are assumed to be related to fluid motion. The great majority of the VT events are located at the intersection between the Humazo and Manchana Covunco faults close to the location of a 2003 geothermal explosion.

The large number of volcano-tectonic events at <3 km depth are probably associated with the geothermal activity focused on the Manchana Covunco fault (no more than 2 kilometres to the east). This fault would be acting as a link between the aquifers and the surface. In addition, we consider that the shallow seismicity may have been advanced by the magma source which is actively degassing (Tassi et al., 2016).

The Curie isotherm profiles based on the aeromagnetic data suggest a thinner magnetic crust associated with thermal attenuation in the Cerro Domuyo region. The deeper events located between 6-7 km (shown in figure 5 and 6 with dark green stars and in figure 9 with red circles) are possibly a consequence of the emplacement or a probable activation of a magmatic body (Lundgren et al., 2018; Astort et al., 2019) which is inflating the Domuyo region. These results are expected to be tested with the application of different techniques using data from the new broadband seismological network installed during 2019.

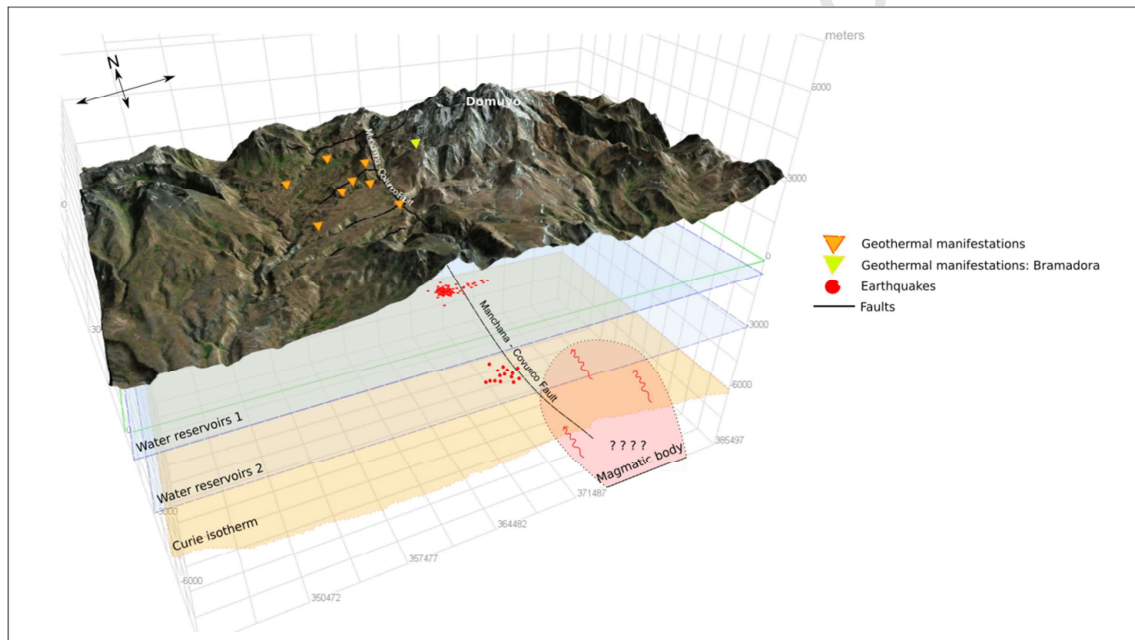


Figure 9: Model of the Domuyo geothermal system and its connection with the Manchana-Covunco Fault. The location of the water reservoirs and the Curie isotherm (near 6 km depth) are shown. The hypocenters of the seismic events correspond to VT with errors in the vertical localization of less than 2km. Events are clustered in two groups according to their depth. The proposed magmatic body is shown in light Pink color.

Acknowledgements.

The authors would like to express their deepest gratitude to the anonymous referee for the useful and critical comments of our work. The authors are grateful to FONCYT and CONICET for founding the studies through Projects PICT 2017 – 1252, PICT 2017 – 1192, PIP 2015, PIO CONICET-FYPF 13320130100212CO, PIP CONICET Gimenez and PI UNRN 40-A-695. The development of this article was funded by the Doctoral CONICET Fellowship.

Bibliography

Astort, A., Walter, T. R., Ruiz, F., Sagripanti, L., Nacif, A., Acosta, G., Folguera, A. (2019). Unrest at Domuyo Volcano, Argentina, Detected by Geophysical and Geodetic Data and Morphometric Analysis. *Remote Sensing*, 11(18), 2175.

Baranov, V. 1957. A new method for interpretation of aeromagnetic maps: pseudo-gravimetric anomalies. *Geophysics*, 22(2), 359-382.

Blakely, R.J., 1995, *Potential Theory in Gravity & Magnetic Applications*: Cambridge University Press, 441 pp.

Bohm, M., Lüth, S., Echtler, H., Asch, G., Bataille, K., Bruhn, C., Rietbrock, A., Wigger, P., 2002, The Southern Andes between 36° and 40°S latitude: Seismicity and average seismic velocities: *Tectonophysics*, v. 356, p. 275–289, doi: 10.1016/S0040-1951(02)003992.

Briggs, I. C. Machine contouring using minimum curvature. *Geophysics*, 1974, vol. 39, no 1, p. 39-48.

Cardoso R.R., Hamza V.M., Alfaro C. 2010 - Geothermal Resource Base for South America: A Continental Perspective. *Proceedings World Geothermal Congress 2010*. Bali, Indonesia, 25-29 April 2010.

Chiodini, G., Liccioli, C., Vaselli, O., Calabrese, S., Tassi, F., Caliro, S., Caselli, A., Agosto, M., D'Alessandro, W., 2014. The Domuyo volcanic system: An enormous geothermal resource in Argentine Patagonia. *Journal of Volcanology and Geothermal Research* 274, 71-77.

Chouet, B. 1992. A seismic model for the source of long-period events and harmonic tremor. In: P. Gasparini, R. Scarpa and K. Aki (Editors), *Volcanic Seismology*. IAVCEI Proc. Vol- canal, 3: 133p 156.

Chouet, B. 2003. Volcano seismology. *Pure and Applied Geophysics*, 160(3-4), 739-788.

Dungan, M.A., Wulff, A., Thompson, R., 2001. Eruptive stratigraphy of the Tatara-San Pedro complex, 36°S, Southern Volcanic Zone, Chilean Andes: Reconstruction method and implications for magma evolution at long-lived arc volcanic centers. *Journal of Petrology* 42(3): 555-626.

Espinosa-Cardena, J. M., and Campos-Enriquez, J. O. 2008. Curie point depth from spectral analysis of aeromagnetic data from Cerro Prieto geothermal area, Baja California, Mexico. *Journal of Volcanology and Geothermal Research*, 176(4), 601-609.

Galetto, A., García, V. Caselli, A. 2018. Structural controls of the Domuyo geothermal field, Southern Andes (36° 38' S), Argentina. *Journal of Structural Geology*.

Havskov, J., Ottemoller, L., 2001. *Seisan: the Earthquake Software*.

Hickey-Vargas, R., Gerlach, D., Frey, F., 1984. Geochemical variations in volcanic rocks from central-south Chile (33°-42°S): implications for their petrogenesis. In:

Harmon, R., Barreiro, B. (Eds.), *Andean Magmatism: Chemical and Isotopic Constraints*. Shiva Publishing Limite, England, pp. 72–95.

Hickey-Vargas, R., Frey, F.A., Gerlach, D.C., López-Escobar, L., 1986. Multiple sources for basaltic arc rocks from the Southern Volcanic Zone of the Andes (34°–41°S): trace element and isotopic evidence for contributions from subducted oceanic crust, mantle and continental crust. *Journal of Geophysical Research* 91, 5963–5983.

Hickey-Vargas, R., Moreno, H., López Escobar, L., Frey, F., 1989. Geochemical variations in Andean basaltic and silicic lavas from the Villarrica–Lanín volcanic chain (39.5°S): an evaluation of source heterogeneity, fractional crystallization and crustal assimilation. *Contributions to Mineralogy and Petrology* 103, 361–386.

Hildreth, W., Moorbath, S., 1988. Crustal contributions to arc magmatism in the Andes of central Chile. *Contrib. Mineral. Petrol.* 98, 455–489.

Hsieh, H. H., Chen, C. H., Lin, P. Y., and Yen, H. Y. 2014. Curie point depth from spectral analysis of magnetic data in Taiwan. *Journal of Asian Earth Sciences*, 90, 26–33.

JICA, 1983. Interim report on the northern Neuquén Geothermal Development Project. First-Second Phase Survey. Japan International Cooperation Agency-Ente Provincial de Energía de la Provincia de Neuquén (unpublished), Neuquén, p. 85.

JICA, 1984. Final Report on the Northern Neuquén Geothermal Development Project. Third Phase Survey. Japan International Cooperation Agency-Ente Provincial de Energía de la Provincia de Neuquén (unpublished), Neuquén, p. 105.

Keidel, J. 1925. Sobre el desarrollo paleogeográfico de las grandes unidades geológicas de la Argentina. *Sociedad Argentina de Estudios Geográficos GAEA, Anales* 4: 251–312. Buenos Aires.

Lahr, J.C., Chouet, B.A., Stephens, C.D., Power, J.A., Page, R.A., 1994. Earthquake classification, location, and error analysis in a volcanic environment: implications for the magmatic system of the 1989–1990 eruptions of Redoubt Volcano, Alaska. *J. Volcanol. Geotherm. Res.* 62, 137 – 152.

Lienert, B. R. E. 1994. HYPOCENTER 3.2: A computer program for locating earthquakes locally, regionally and globally. Technical report, Hawaii Institute of Geophysics & Planetology.

Lisjak, M., 2007. Geología, estratigrafía y estructura de las nacientes del arroyo Manchana Covunco. Área del cerro Domuyo, Neuquén. Degree thesis (unpublished), University of Buenos Aires, 100 pp.

Llambías, E. J., Leanza, H. A., Carbone, O., 2007. Evolución tectono-magmática durante el Pérmico al Jurásico Temprano en la cordillera del Viento (37°05' S–37°15' S): nuevas evidencias geológicas y geoquímicas del inicio de la cuenca Neuquina. *Revista de la Asociación Geológica Argentina* 62 (2), 217–235.

López-Escobar, L., Kilian, R., Kempton, P. D., Tagiri, M. 1993. Petrography and geochemistry of Quaternary rocks from the Southern Volcanic Zone of the Andes between 41°30' and 46°00'S, Chile. *Andean Geology*, 20(1), 33-55.

López-Escobar, L., Cembrano, J., and Moreno, H., 1995, Geochemistry and tectonics of the Chilean Southern Andes basaltic Quaternary volcanism (37°–46°S): *Revista Geológica de Chile*, v. 22, p. 219–234.

Lundgren, P., Girona, T., Samsonov, S., Realmuto, V., y Liang, C. (2018). Under the radar: New activity beneath the "roof of patagonia", Domuyo volcano, Argentina. In AGU Fall Meeting 2018. AGU.

Mariot, M., 2008. Geología y estructura del cerro Domuyo, provincia del Neuquén. Degree thesis (unpublished), University of Buenos Aires, p. 154.

Mas, G.R., Bengochea, L., Mas, L.C., Lopez, N., 2009. Hydrothermal explosion due to seal effect in the Humazo geothermal manifestation, Domuyo volcano, Neuquén, Argentina. 34th Workshop on Geothermal Reservoir Engineering Stanford University, Stanford, California, p. 5.

Mas, L. C., Mas, G. R., Bengochea, L. 2011. Recursos Geotérmicos. In XVIII Congreso Geológico Argentino, Neuquén (pp. 820-830).

McNutt, S. R., Roman, D. C. 2015. Volcanic seismicity. In *The Encyclopedia of Volcanoes* (pp. 1011-1034). Academic Press.

Pesce, A.H., 1987. Evaluación Geotérmica del Área Cerro Domuyo: Síntesis Estratigráfica, Vulcanológica, Estructural y Geoquímica - Modelo Geotérmico Preliminar, provincia del Neuquén, República Argentina. In: *Proceedings International Meeting on Geothermics and Geothermal Energy*, Sao Paulo, Brazil, *Revista Brasileira de Geofísica* 5, 283-299.

Pesce, A.H., 2013. The Domuyo geothermal area, Neuquén, Argentina. *Geothermal Resources Council* 37, 309-314.

Pesce, A.H. 2015 - Argentina Country Update. *Proceedings World Geothermal Congress 2015*. Melbourne, Australia, 19-25 April 2015P..

Phillips, J. 2007. Geosoft executables (GX's) developed by the US Geological Survey, version 2.0, with notes on GX development from Fortran code. US Geological Survey. <https://pubs.usgs.gov/of/2007/1355/>.

Pujol, J. 2000. Joint event location—the JHD technique and applications to data from local seismic networks. In *Advances in seismic event location* (pp. 163-204). Springer, Dordrecht.

Soler, S. R. 2015. Métodos Espectrales para la Determinación de la Profundidad del Punto de Curie y el Espesor Elástico de la Corteza Terrestre. Facultad de Ciencias Exactas, Ingeniería y Agrimensura (FCEIA), Universidad Nacional de Rosario (UNR) (Tesis de Grado para Título de Licenciado en Física. Inédito).

Stipanovic, P.N., Rodrigo, F., Baulies, O., Martínez, C.G., 1968. Las formaciones presenonianas del denominado Macizo Nordpatagónico y regiones adyacentes. Revista de la Asociación Geológica Argentina 27, 67-98.

Tanaka, A., Okubo, Y., Matsubayashi, O. 1999 Curie point depth based on spectrum analysis of the magnetic anomaly data in East and Southeast Asia: Tectonophysics, v. 306, pp. 461-470.

Tassi, F., Liccioli, C., Agosto, M., Chiodini, G., Vaselli, O., Calabrese, S., Pecoraino, G., Tempesti L., Caponi C., Fiebig, J., Caliro, S., Caselli, A., 2016. The hydrothermal system of the Domuyo volcanic complex (Argentina): A conceptual model based on new geochemical and isotopic evidences. Journal of Volcanology and Geothermal Research 328, 198-209.

Thorpe, R.S., 1984. The tectonic setting of active Andean volcanism, En: Harmon, R.S. y Barreiro, B.A. (Eds.). Andean Magmatism, Shiva Publications Limited, 4-8, Cheshire.

Thorpe, R.S., Francis, P.W., 1979, Variations in Andean andesite compositions and their petrogenetic significance: Tectonophysics, 57(1): 53-70.

Tormey, D.R., Hickey-Vargas, R., Frey, F.A., López-Escobar, L., 1991. Recent lavas from the Andean volcanic front (33 to 42°S); interpretations of a long-arc compositional features. In Andean magmatism and its tectonic setting. In: Harmon, R.S., Rapela, C.W. (Eds.), Geological Society of America, 265, pp. 57-77.

Yrigoyen, M., 1972. Cordillera Principal. Geología Regional Argentina. Academia Nacional de Córdoba, 1: 345-364, Córdoba.

Yrigoyen, M., 1979. Cordillera Principal. 2° Simposio de Geología Regional Argentina. Academia Nacional de Ciencias de Córdoba, 1: 651-694, Córdoba.

Zanettini, J.C.M., 2001. Hoja Geológica 3772-II, Las Ovejas. Provincia del Neuquén. Instituto de Geología y Recursos Minerales, Servicio Geológico Minero Argentino, Buenos Aires, Boletín 263, p. 61.

Zappettini, E., Méndez, V., Zanettini, J.C., 1987. Metasedimentitas mesopaleozoicas en el noroeste de la Provincia del Neuquén. Revista de la Asociación Geológica Argentina 42 (1-2), 206-207.

Appendix

Table location of the 259 volcano tectonic events.

- Cerro Domuyo presents a high local micro seismicity.
- The shallowest seismicity is related with geothermal activity.
- The deepest seismicity could be associated with the observed inflation.
- At Domuyo region there is observed a thinner magnetic crust compared to the surrounding areas.
- Geothermal activity, VT events, thermal attenuation and the inflation observed are highly related.

Considering conflict of interest we refused the persons below

Dra. Patricia Alvarado

Dra. Ines Bilbao

Dr. Gustavo Ortiz