



ORIGINAL ARTICLE

Leishmania (L.) amazonensis infection impairs reproductive and fetal parameters in female mice



María Belén Sánchez^{a,1}, María José Germanó^{a,1}, María Cristina Salomón^b, Julieta Scelta^c, María Fernanda García Bustos^d, Paula María Ginevro^a, Diego Esteban Cargnelutti^{a,b,*}

^a Instituto de Medicina y Biología Experimental de Cuyo (IMBECU), Consejo Nacional de Investigaciones Científicas y Técnicas (CONICET), Centro Científico Tecnológico (CCT), Universidad Nacional de Cuyo (UNCuyo), Mendoza, Argentina

^b Área de Parasitología, Facultad de Ciencias Médicas (FCM), Universidad Nacional de Cuyo, Mendoza, Argentina

^c Instituto de Histología y Embriología de Mendoza (IHEM), Consejo Nacional de Investigaciones Científicas y Técnicas (CONICET), Centro Científico Tecnológico (CCT), Universidad Nacional de Cuyo (UNCuyo), Mendoza, Argentina

^d Instituto de Patología Experimental (IPE), Consejo Nacional de Investigaciones Científicas y Técnicas (CONICET), Centro Científico Tecnológico (CCT), Salta, Argentina

Received 22 January 2020; accepted 19 August 2020

Available online 26 December 2020

KEYWORDS

Leishmaniasis;
Reproduction;
Fertility;
Mice;
Infection

Abstract Leishmaniasis is a group of parasitic zoonotic diseases caused by intracellular protozoans belonging to the genus *Leishmania*. Little is known about the effects that this parasitosis may have on the reproductive parameters and pregnancy of infected humans and pets. This study aimed to evaluate the influence of chronic cutaneous leishmaniasis caused by *Leishmania (Leishmania) amazonensis* on reproductive and fetal parameters using a female murine model. A control group of female BALB/c mice and a group infected with *L. (L.) amazonensis* were mated with healthy males. Clinical parameters were monitored during the pre-mating and gestational periods. Female mice were euthanized on day 19 of gestation, when the fetuses were weighed and their length measured and embryonic resorptions and fetal death were recorded. We observed five fetal deaths and three embryonic resorptions in the infected group. Furthermore, there was a decrease in fertility in the infected group (26.32%). The weight of the offspring from infected mothers was lower than that in the control group (1.019 ± 0.035 g and 1.163 ± 0.032 g, $p < 0.01$). Fetal length was reduced in the infected group (3.71 ± 0.05 cm in the control group and 3.40 ± 0.06 cm in the infected group $p < 0.001$). This study shows that cutaneous leishmaniasis caused by *L. (L.) amazonensis* impairs reproductive and fetal parameters in mice.

© 2020 Asociación Argentina de Microbiología. Published by Elsevier España, S.L.U. This is an open access article under the CC BY-NC-ND license (<http://creativecommons.org/licenses/by-nc-nd/4.0/>).

* Corresponding author.

E-mail address: diegocargnelutti@hotmail.com (D.E. Cargnelutti).

¹ The authors María Belén Sánchez and María José Germanó have contributed equally to the design, experimental development and writing of this study designated as co-first authors.

<https://doi.org/10.1016/j.ram.2020.08.003>

0325-7541/© 2020 Asociación Argentina de Microbiología. Published by Elsevier España, S.L.U. This is an open access article under the CC BY-NC-ND license (<http://creativecommons.org/licenses/by-nc-nd/4.0/>).

PALABRAS CLAVE

Leishmaniasis;
Reproducción;
Fertilidad;
Ratones;
Infección

La infección por *Leishmania (L.) amazonensis* afecta parámetros reproductivos y fetales en ratones hembras

Resumen La leishmaniasis comprende un grupo de enfermedades zoonóticas parasitarias causadas por protozoos intracelulares pertenecientes al género *Leishmania*. Poco se conoce sobre los efectos que esta parasitosis puede tener sobre los parámetros reproductivos y la gestación en humanos y en otras especies infectadas. El objetivo de este estudio fue determinar la influencia de la leishmaniasis cutánea crónica, causada por *Leishmania (Leishmania) amazonensis*, en parámetros reproductivos y fetales. Se apareó un grupo control y un grupo infectado de ratones hembra BALB/c (previamente inoculado con *L. (L.) amazonensis*) con machos sanos. Se analizaron parámetros clínicos durante los períodos pregestacional y gestacional. Las hembras fueron eutanasiadas en el día 19 de gestación, momento en el cual se pesaron y midieron los fetos y se registraron las reabsorciones embrionarias y las muertes fetales. Se observaron 5 muertes fetales y 3 reabsorciones embrionarias en el grupo infectado. Además, hubo una disminución en la fertilidad de este último grupo (26,32%). Por otra parte, el peso de la descendencia de madres infectadas fue menor que el del grupo control ($1,019 \pm 0,035$ g y $1,163 \pm 0,032$ g, respectivamente, $p < 0,01$). Por último, la longitud fetal se redujo en el grupo infectado ($3,71 \pm 0,05$ cm en el grupo control y $3,40 \pm 0,06$ cm en el grupo infectado, $p < 0,001$). Este estudio muestra que la leishmaniasis cutánea causada por *L. (L.) amazonensis* afecta los parámetros reproductivos y fetales en ratones.

© 2020 Asociación Argentina de Microbiología. Publicado por Elsevier España, S.L.U. Este es un artículo Open Access bajo la licencia CC BY-NC-ND (<http://creativecommons.org/licenses/by-nc-nd/4.0/>).

Introduction

Leishmaniasis is a worldwide anthroponotic disease caused by an intracellular protozoan of the genus *Leishmania*³. It involves more than 30 species, 21 of which are pathogenic to humans². This disease is currently considered a growing public health concern worldwide² due to the recent increase in the number of cases: between 12 and 15 million people infected in 98 countries, with 0.7–1 million cases estimated yearly⁹. In Argentina, the transmission of leishmaniasis has become more severe, and the number of cases has increased since 1980⁴¹. Although the Northern region of the country is the endemic area, new cases have been detected in non-endemic regions. The reason behind this increase is climatic change, which causes the dissemination of transmitting vectors and the transfer of species acting as reservoirs, making this pathology very difficult to control³⁰. This disease presents different clinical forms and can compromise the skin, mucosa, and viscera, depending on parasite and host factors. The most common form of the disease is cutaneous, caused in Argentina by three species: *Leishmania (Viannia) guyanensis*, *Leishmania (V.) braziliensis*, and *Leishmania (Leishmania) amazonensis*. By contrast, *Leishmania (Leishmania) infantum* causes the visceral clinical form and has higher morbidity and mortality rates^{1,27}. The predominant mode of transmission is the bite of infected sandflies, although new means of dissemination have been described recently: organ transplants, blood transfusions, contaminated cutting objects, and sexual and vertical forms^{5,22}.

Some of the main damage caused by the new means of transmission, specifically in the vertical and sexual forms, are the dissemination of the infectious agents to the

offspring or alterations during the gestational period. These alterations could culminate in embryonic resorptions, fetal deaths, abortions, and congenital malformations, which could lead to an increase in perinatal mortality^{31,33}. These complications also occur in other infectious diseases transmitted by vectors, such as Zika and Chagas diseases^{11,32}. The transmission of visceral leishmaniasis to the offspring has been widely reported^{18,20,26,34,38,39} but little is known about the influence of visceral and cutaneous leishmaniasis on maternal reproductive parameters. Thus, the behavior of the disease during pregnancy and fetal development remains unclear^{37,39}.

To date, no reports have shown the effects of *L. (L.) amazonensis* infection on reproductive and fetal parameters or clinical features during pregnancy. Therefore, this study aimed to evaluate the influence of chronic cutaneous leishmaniasis caused by *L. (L.) amazonensis* on reproductive and fetal parameters using a female murine model.

Materials and methods**Study design**

In this study, we used an analytical, experimental, and controlled methodological design.

Parasites

Promastigotes of *L. (L.) amazonensis* (MHOM/VE/84/MEL) were grown at 23 °C in Novy-MacNeal-Nicolle medium (NNN) (Invitrogen, Massachusetts, USA) with Roswell Park Memorial Institute (RPMI) 1640 medium supplemented with 20%

heat-inactivated fetal bovine serum (FBS), 2 mM L-glutamine, 100 U/ml penicillin, and 100 mg/ml streptomycin (Life Technologies, San Diego, CA, USA) for 4 days and then transferred to supplemented RPMI 1640 medium¹⁰. Infectivity was maintained by serial passage through mice.

Animals

Eight-week-old female BALB/c mice were used in this study. They were kept in standard conditions, with barriers and controlled light cycle and temperature. Water and food were provided *ad libitum*. All animals were treated in conformity with the Guiding Principles for the Care and Use of Animals of the US National Institute of Health.

Experimental protocol

Thirty-nine females were distributed randomly in two groups: uninfected group (n = 12) and mice infected with 1×10^6 promastigotes of *L. (L.) amazonensis* (n = 27) by the intradermal route on the right footpad (RFP).

Footpad swelling was measured weekly using a digital caliper (SCHWYZ, ED-10P, Switzerland) up to 10 weeks after infection. The value for uninfected footpads was subtracted from each infected footpad to estimate lesion size. A digital precision balance (Sartorius, Göttingen, Germany) was used to determine body weight.

Ten weeks after the start of the infection, a polygamous mating system was performed¹⁶. In total, 19 infected and 8 control female mice were mated with healthy mice. The remaining females (4 control and 8 infected) were employed to estimate the splenic index and antibody response.

Each female was checked daily for 7 days to evaluate the presence of a mucous plug⁶. Day 1 of pregnancy was determined when the mucous plug was detected and, at that moment, each female was transferred to the cage with the initial group.

Pregnant females were weighed every day until their euthanasia. Gestation was interrupted on day 19 of gestation, when the females were euthanized and the spleen was removed.

At necropsy, maternal and offspring data were recorded. The number of pregnant females in both groups was counted to correlate the pregnancy with the infection. Therefore, the pregnancy percentage was calculated from pregnant females with regard to the total in each group according to the following formula:

$$\text{Pregnancy percentage} \\ = (\text{pregnant female/total females}) \times 100$$

Two independent experiments were carried out with the same number of animals per repetition.

Fetal parameters

The total number of living and dead fetuses, implantation sites, and embryonic resorptions in each group were counted, and the weight and length of the fetuses were measured.

Two different intrauterine deaths were established: embryonic resorptions and fetal deaths. Embryonic resorptions were established as the difference between total implantation sites and the number of concepti because embryonic resorption is defined as prenatal death followed by degeneration and complete resorption of the conceptus⁴³. By contrast, pink and perfused fetuses were considered viable²⁸, while the rest and those showing maceration were considered fetal death⁴³.

The frequency of intrauterine death/pregnant female was calculated. Similarly, the percentage of females that presented embryonic resorptions and/or fetal deaths were calculated and defined as intrauterine death rate (%)²⁸.

Splenic index

The splenic index is used as an indicator of splenomegaly, which is an immune response to the systemic infection by *Leishmania*. This index was determined through the following formula using non-pregnant females⁴⁷:

$$\text{Splenic index} = (\text{spleen weight/whole body weight}) \times 100$$

Purification of DNA and PCR analysis

DNA from all the spleens from pregnant mice (n = 5 infected and n = 4 control) and *L. (L.) amazonensis* promastigotes (as positive control) was obtained using the modified phenol-chloroform method¹⁹. DNA samples were rehydrated with 50 μ l of ultrapure water and stored at -20°C . DNA concentration and purity were determined by spectrophotometric determination at A_{260} and A_{280} (Genway Genova).

Detection of *Leishmania* DNA was carried out by Polymerase Chain Reaction (PCR) with the described primers³⁶ forward, 5'-CCTATTTTACACCAACCCAGT-3' [JW11] and reverse, 5'-GGGTAGGGCGTTCTGCGAAA-3' [JW12], which amplify a 120-bp fragment of the minicircle kDNA. PCR was performed in accordance to the project described³⁵ under the following conditions: extracted DNA (50 ng) was mixed with a solution containing $1 \times$ PCR buffer, 2.5 mM MgCl_2 , 200 μ M each dNTP, 50 pmol of each primer, and 0.0625 U of *Taq* polymerase (Invitrogen) in a 20 μ l final volume. After initial denaturation (8 s at 95°C), 40 cycles of denaturation for 10 s at 95°C , annealing for 10 s at 56°C , and elongation for 8 s at 72°C were carried out.

This reaction was performed in duplicate for both the uninfected control and the infected pregnant mice samples, as well as for the positive controls [*i.e.*, *L. (L.) amazonensis* cultures] and the negative controls [*i.e.*, samples without DNA] in a Rotor-GeneTM 6000 instrument (Corbett Life Science, Mortlake, Australia).

PCR products (3 of 4 control and 3 of 5 infected mice) and the molecular weight marker (100-bp Plus DNA ladder, Trans[®], Beijing, China) were loaded on a 2.5% agarose gel and run at 85 V for 20 min. Images were collected using the ChemiDocTM XRS System (BioRad[®], California, USA).

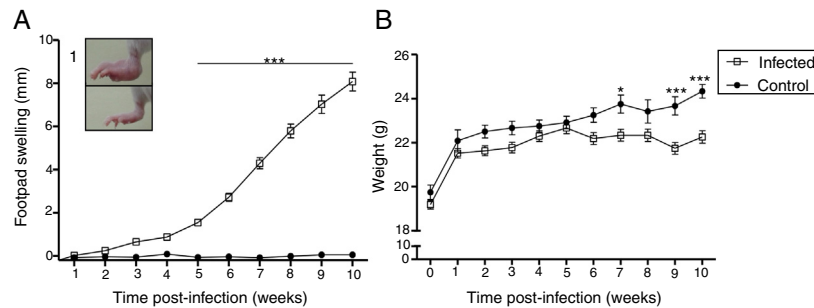


Figure 1 Clinical features induced by *L. (L.) amazonensis* infection. Footpad swelling (A) and weight (B) were measured weekly for 10 weeks. Each point represents average thickness of the footpad (A) and weight (B) after infection. These parameters were measured in all females from both groups ($n=12$ from the control and $n=27$ from the infected group). Photograph of RFP (1). * $p < 0.05$; ** $p < 0.01$; *** $p < 0.001$ by two-way ANOVA.

Antibody response

Serum samples from non-pregnant females diluted in 1:500 were used to determine antibody response by the enzyme-linked immunosorbent assay (ELISA) following the protocol described⁴². Briefly, 96-well microtitration plates (MaxiSorp; Nalge-Nunc International, Pittsburgh, USA) were coated with $3 \mu\text{g}/\text{well}$ of total *L. (L.) amazonensis* antigens in PBS overnight at 4°C . Plates were incubated with 5% non-fat dry milk in PBS at room temperature for 2 h to block nonspecific bindings. After washing with PBS containing 0.05% Tween-20 (Sigma Aldrich, St Louis, USA), the plates were incubated at 37°C for 1 h with 1:500 dilutions of mice sera. Then, the plates were washed and incubated with horseradish peroxidase-conjugated goat antimouse IgG (Thermo Scientific, Pittsburgh, USA) diluted 1:10 000. Finally, a color reaction was developed by the addition of $100 \mu\text{l}/\text{well}$ of substrate solution 3,3',5,5'-tetramethylbenzidine (Sigma Aldrich, St Louis, USA) for 30 min.

Statistical analysis

Differences between groups were tested for significance by two-way analysis of variance (ANOVA), the Fisher's test, and two-tailed Student's *t*-tests, depending on the case. A $p < 0.05$ was considered statistically significant. The data shown represent the mean values and standard error of the mean (SEM). The software used for all statistical analyses was GraphPad Prism version 5.01 for Windows (GraphPad Software, California, USA).

Ethical considerations

All applicable international and institutional guidelines for the care and use of animals were followed. All procedures performed in studies involving animals were under the ethical standards of the institution or practice at which the studies were conducted (Institutional Animal Care and Use Committee of the School of Medical Science, Universidad Nacional de Cuyo, protocol approval no. 65/2015).

Results

Course of *L. (L.) amazonensis* infection in the pre-mating stage

We evaluated the course of the infection in the pre-mating stage weekly by measuring footpad swelling and body weight for 10 weeks (Fig. 1). There was an increase in footpad swelling in the infected group from the 5th week post-infection ($p < 0.01$), when most of the lesions were nodular or nodule-crusts. Body weight was statistically significant in the 7th week and from the 9th week after the infection.

We evaluated the specific antibody response against *Leishmania* and splenomegaly when the animals were euthanized to analyze the systemic effect of infection. Antibody response was measured by ELISA (Fig. 2A) and splenomegaly by the splenic index (Fig. 2B).

There was a statistically significant increase in antibody response in the infected group from the 6th week after the infection ($p < 0.001$). The results of the splenic index showed that the infected group developed splenomegaly with a statistical difference between groups ($p < 0.001$); splenomegaly could even be observed macroscopically (Fig. 2B).

Thus, we confirmed the course of *L. (L.) amazonensis* infection by evaluation of different parameters such as footpad swelling, pre-mating weight, and antibody response.

Course of maternal *L. (L.) amazonensis* infection in the pregnancy stage

Parasite invasion was confirmed by PCR, which demonstrated that spleens from infected pregnant mothers tested positive for the presence of *Leishmania* parasite, exhibiting a 120-bp amplification product (Fig. 3). Furthermore, the spleens from the healthy mothers tested negative for *Leishmania*.

We observed a correlation between the pregnancy percentage and the infection by *L. (L.) amazonensis*: There was a statistically significant decrease in the percentage of infected pregnant females relative to the uninfected control group (26% and 50%, $p < 0.001$ by the Fisher's correlation test) (Fig. 4). In this way, we observed that there were fewer pregnant females in the infected than in the control group

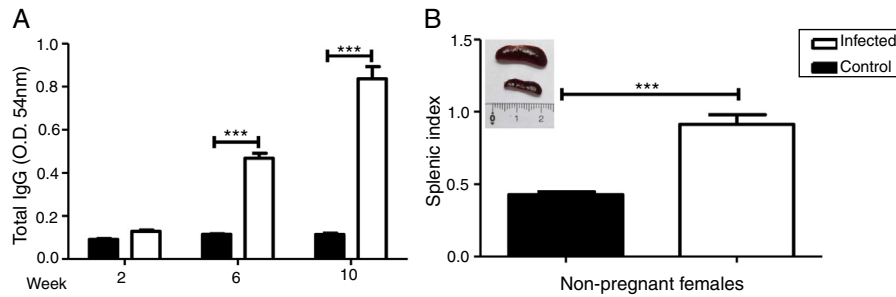


Figure 2 Increase in antibody response and splenic index due to *L. (L.) amazonensis* infection in pre-mating females. Antibody response to infection was measured three times after infection (A). Splenic index and spleen image of both groups were evaluated 10 weeks after infection (B). These parameters were measured in non-pregnant females (n=4 control and n=8 infected mice). Values represent mean \pm SEM of optic density values (O.D.) (A) and of splenic index (B). *** $p < 0.001$ by *t*-test.

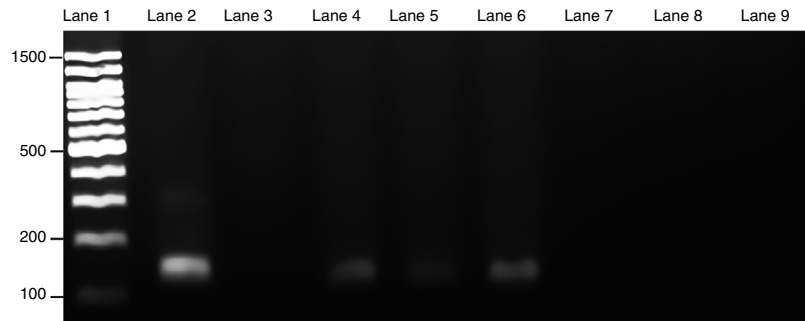


Figure 3 Presence of *L. (L.) amazonensis* in maternal spleen was confirmed by PCR. Three PCR products from each pregnant female group were used to make an electrophoresis gel. Lanes: 1: 100-bp molecular weight; 2: *in vitro* culture of *L. (L.) amazonensis*; 3: non-template control; 4-6: infected maternal spleen; 7-9: non-infected maternal spleen. The size of the product was 120-bp.

(5 out of 19 and 4 out of 8, respectively). Finally, no differences were observed in female weight between the groups during the pregnancy stage (data not shown).

Effect of maternal *L. (L.) amazonensis* infection on the offspring

The total number of live offsprings and the media of fetuses by female were similar between the groups (seven in each group). However, it should be noted that we observed five fetal deaths and three embryonic resorptions only in the infected group (Table 1). Two of 5 (40%) infected pregnant females exhibited intrauterine deaths with a frequency of 9.09% and 77.78% of intrauterine deaths in each one.

Fetal parameters were evaluated for weight and length (Fig. 5A and B). Fetal weight was significantly lower in the infected group than in the control group (1.019 ± 0.035 g and 1.163 ± 0.032 g, $p < 0.01$). Fetal length was significantly reduced in the infected group as compared to the control group (3.40 ± 0.06 cm and 3.71 ± 0.05 cm, $p < 0.001$).

Discussion

Different clinical parameters were analyzed in females infected by *L. (L.) amazonensis*, such as pre-mating footpad swelling, body weight, antibody response, splenic index, and mortality. We observed a weight decrease in the infected pre-mating group (Fig. 1B). This result is in agreement

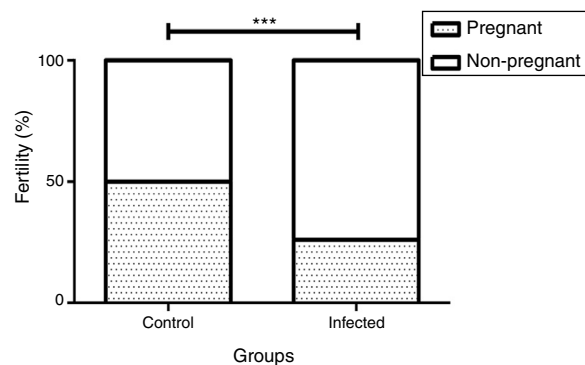


Figure 4 Influence of infection by *L. (L.) amazonensis* on female mice fertility rate. Fertility rate was calculated based on pregnant and non-pregnant females of each group after mating (n=8 control and n=19 infected mice). Bar graph represents the correlation between pregnancy result and infection, *** $p < 0.001$ through Fisher's test.

with that of another study, which analyzed the infection by species causing visceral leishmaniasis, such as *L. (L.) donovani*²⁹; however, weight decrease was not observed in cutaneous leishmaniasis caused by *Leishmania (Leishmania) mexicana*⁵. Moreover, there were no deaths in female mice with cutaneous leishmaniasis caused by *L. (L.) amazonensis*, as opposed to visceral leishmaniasis¹⁷.

Previous studies indicate that advanced clinical leishmaniasis is characterized by increased production of

Table 1 Gestational features in cutaneous leishmaniasis

	Control (n = 4/8)	Infected (n = 5/19) ^a
Gestation		
Live offspring (n)	28	36
Live offspring media (range)	7 (5–10)	7 (2–10)
Total intrauterine deaths (n)	0	8
Fetal deaths	0	5
Embryonic resorptions	0	3

^a n = 4/8 and n = 5/19 pregnant females/total females in both groups. (n): number of individuals.

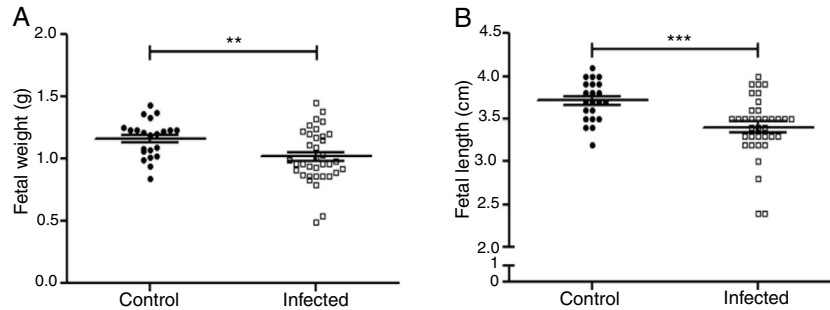


Figure 5 Influence of infection by *L. (L.) amazonensis* on fetal parameters in mice. Fetal weight (a) and length (b) were determined (n = 28 control, and n = 36 offspring from infected females). Statistically significant differences can be observed; ***p* < 0.01; ****p* < 0.001 by using *t*-test. Values represent mean ± SEM.

anti-*Leishmania* antibodies and severe splenomegaly in the case of visceral leishmaniasis⁸. In accordance with these findings, our results showed an increase in anti-*Leishmania* IgG antibody levels over time (Fig. 2A), indicating an ascending course of the disease. Moreover, the increase in the splenic index (Fig. 2B) confirms that splenomegaly was generated as a response to a systemic infection.

For cutaneous *Leishmania* species, it is usually thought that the parasite is limited to skin infections. However, the presence of cutaneous *L. (L.) amazonensis* species in internal organs has previously been identified in murine models of infection¹³. The presence of parasites in the spleen of the infected pregnant group (Fig. 3) confirms that *L. (L.) amazonensis* also reaches internal organs.

Infectious diseases have developed new forms of transmission that could play a fundamental role in the pathogenesis of the infection. In the case of visceral leishmaniasis, a large number of studies have reported the transmission to the offspring by different species^{26,34,39}. However, there are no reports of natural vertical transmission of cutaneous leishmaniasis, and few experimental assays have been conducted with species that produce this type of pathology^{5,37}.

It has been shown that pregnancy impairs resistance of C57BL/6 mice to *L. (L.) major* infection; thus, pregnant C57BL/6 mice developed larger cutaneous lesions²³. This demonstrates that infection is exacerbated during pregnancy due to the relative immune tolerance induced in the middle of this stage. Furthermore, pregnancy with splenomegaly is associated with an increased risk to the fetus, with complications like intrauterine growth

restriction⁴⁴. Therefore, parasites that reach the spleen could also colonize other organs, such as the placenta, or the fetuses, inducing clinical manifestations of the disease in the offspring^{20,37}.

Our results showed a strong influence of infection by *L. (L.) amazonensis* on the reproductive parameters in BALB/c, in which fertility depletion was observed (Fig. 4). This result is inconsistent with other studies, such as the findings for *L. (L.) mexicana*, which did not reduce fertility in female BALB/c⁵. Therefore, female fertility depletion has not been documented using any other species of *Leishmania*. This decrease in the fertility rate could be associated with different factors, such as immune imbalance⁴⁵. It is well known that the success of pregnancy depends on a Th1-like cellular immune response in the pre-implantation period. However, the change to an immunotolerant profile (Th2 and Treg-like response accompanied by an inhibition of IFN-γ production) is necessary for fetal development²⁵. Specifically, the increase in anti-*Leishmania* IgG antibody levels (Fig. 2A) observed in our infected female mice confirms that a chronic *L. (L.) amazonensis* infection induces a high humoral immune response, in accordance with other studies, where a Th2-like immune profile was demonstrated^{12,15}. This type of immune response in a pre-implantation period could explain the observed results regarding the reproductive and fetal parameters.

Fetal complications such as deaths, embryonic resorptions (Table 1), body length, and weight reduction of the offspring were observed in the *L. (L.) amazonensis* infected group (Fig. 5). These complications have been documented for other species of *Leishmania*, like *Leishmania (Leishma-*

nia mexicana, *Leishmania (Leishmania) major* and *L. (V.) braziliensis*^{5,33,38}. As for fetal weight, a reduction was also observed in the first report of vertical transmission of human visceral leishmaniasis by *Leishmania (Leishmania) donovani* infection²⁶ and in experimental murine cutaneous leishmaniasis by *L. (L.) mexicana* and *L. (L.) major*^{4,45}. Both fetal weight and length reduction are associated with intrauterine growth restriction²⁴. On the one hand, these reductions can be attributed to infected mothers with splenomegaly⁴⁴. The infection can also decrease the ingestion and absorption of food as well as cause placental lesions that affect the transfer of nutrients to the fetus⁴⁰. On the other hand, these reductions can also be attributed to an imbalance in the maternal cellular response.

However, if the maternal response to *Leishmania* infection is associated with a Th2/Th17 profile, the response may contribute to uncontrolled infection leading to severe maternal disease (Th2) and to increased hostility to pregnancy, resulting in fetal deaths and embryonic resorptions (Th17)⁷.

Therefore, our results allowed us to show the relationship between intrauterine growth restriction and *L. (L.) amazonensis* infection in a murine model. This relationship has also been observed when natural and experimental infections by Zika and *Trypanosoma cruzi* occur^{14,21,40,46}.

Conclusion

Taken together, our results demonstrate that cutaneous leishmaniasis caused by *L. (L.) amazonensis* infection impairs reproductive and fetal parameters in mice, generating (1) fertility depletion; (2) intrauterine growth restriction; and (3) fetal deaths and embryonic resorptions.

The results of the present study highlight the importance of considering cutaneous leishmaniasis by *L. (L.) amazonensis* as a disease that affects reproduction as well as fetal health. We consider that these findings should be taken into account for the treatment of human cases although further studies should be conducted to evaluate the effects of cutaneous leishmaniasis on human pregnancy.

Conflict of interest

The authors declare that they have no conflicts of interest.

Acknowledgments and funding

This study was supported by Universidad Nacional de Cuyo (UNCuyo SeCTyP J063), Consejo Nacional de Investigaciones Científicas y Técnicas (CONICET) (PIP 11220150100210Co 2015-2017), Agencia Nacional de Promoción Científica y Tecnológica (AGENCIA) (PICT No. 2015-3157), Universidad del Aconcagua (CIUDA 2017-2019) and Fundación Alberto Roemmers (2017-2019).

The authors are grateful to Dr Flavia Alejandra Bruna for her help in image editing.

References

1. Adam G, Ali K, Abdella Y, Omar S, Ahmed M, Abdalla T, Ali A. Trend in cumulative cases and mortality rate among visceral leishmaniasis patients in Eastern Sudan: a 14 year registry. *Int J Infect Dis*. 2016;51:81-4.
2. Akhoundi M, Downing T, Votypka J, Kuhls K, Lukes J, Cannet A, Ravel C, Marty P, Delaunay P, Kasbari M, Granouillac B, Gradoni L, Sereno D. *Leishmania* infections: molecular targets and diagnosis. *Mol Aspects Med*. 2017;57:1-29.
3. Alvar J, Vélez I, Bern C, Herrero M, Desjeux P, Cano J, Jannin J, den Boer M, Team WLC. Leishmaniasis worldwide and global estimates of its incidence. *PLoS One*. 2012;7:e35671.
4. Arinola OG, Louis JS, Tacchini-Cottier F, Aseffa A, Salimonu LS. Pregnancy impairs resistance of C57BL/6 mice to *Leishmania major* infection. *Afr J Med Med Sci*. 2005;34:65-70.
5. Avila-García M, Mancilla-Ramírez J, Segura-Cervantes E, Farfan-Labonne B, Ramírez-Ramírez A, Galindo-Sevilla N. Transplacental transmission of cutaneous *Leishmania mexicana* strain in BALB/c mice. *Am J Trop Med Hyg*. 2013;89:354-8.
6. Behringer R, Gertsenstein M, Nagy KV, Nagy A. Selecting female mice in estrus and checking plugs. *Cold Spring Harb Protoc*. 2016;2016:prot092387.
7. Berger BA, Bartlett AH, Saravia NG, Galindo Sevilla N. Pathophysiology of *Leishmania* infection during pregnancy. *Trends Parasitol*. 2017;33:935-46.
8. Boggiatto P, Ramer-Tait A, Metz K, Kramer E, Gibson-Corley K, Mullin K, Jostetter J, Gallup J, Jones D, Petersen C. Immunologic indicators of clinical progression during canine *Leishmania infantum* infection. *Clin Vaccine Immunol*. 2010;17:267-73.
9. Burza S, Croft S, Boelaert M. Leishmaniasis. *Lancet*. 2018;1-20.
10. Cargnelutti DE, Salomon MC, Celedon V, Garcia Bustos MF, Morea G, Cuello-Carrion FD, Scodeller EA. Immunization with antigenic extracts of *Leishmania* associated with Montanide ISA 763 adjuvant induces partial protection in BALB/c mice against *Leishmania (Leishmania) amazonensis* infection. *J Microbiol Immunol Infect*. 2016;49:24-32.
11. Carlier Y, Truysens C. Congenital Chagas disease as an ecological model of interactions between *Trypanosoma cruzi* parasites, pregnant women, placenta and fetuses. *Acta Trop*. 2015;151:103-15.
12. Cortes DF, Carneiro MB, Santos LM, Souza TC, Maioli TU, Duz AL, Ramos-Jorge ML, Afonso LC, Carneiro C, Vieira LQ. Low and high-dose intradermal infection with *Leishmania major* and *Leishmania amazonensis* in C57BL/6 mice. *Mem Inst Oswaldo Cruz*. 2010;105:736-45.
13. Costa LE, Chavez-Fumagalli MA, Martins VT, Duarte MC, Lage DP, Lima MI, Pereira NC, Soto M, Tavares CA, Goulart LR, Coelho EA. Phage-fused epitopes from *Leishmania infantum* used as immunogenic vaccines confer partial protection against *Leishmania amazonensis* infection. *Parasitology*. 2015;142:1335-47.
14. Chibueze E, Tirado V, da Silva Lopes K, Balogun O, Takemoto Y, Swa T, Dagvadorj A, Nagata C, Morisaki N, Menendez C, Ota E, Mori R, Oladapo O. Zika virus infection in pregnancy: a systematic review of disease course and complications. *Reprod Health*. 2017;14:1-14.
15. de Oliveira Cardoso F, de Souza Cda S, Mendes VG, Abreu-Silva AL, Goncalves da Costa SC, Calabrese KS. Immunopathological studies of *Leishmania amazonensis* infection in resistant and in susceptible mice. *J Infect Dis*. 2010;201:1933-40.
16. Dorsch M, Wittur I, Garrels W. Efficiency of timed pregnancies in C57BL/6 and BALB/c mice by mating one male with up to four females. *Lab Anim*. 2020.

17. Driemeier M, de Oliveira PA, Druzian AF, Lopes Brum LF, Pontes ER, Dorval ME, Paniago AM. Late diagnosis: a factor associated with death from visceral leishmaniasis in elderly patients. *Pathog Glob Health*. 2015;109:283–9.
18. Eltoun I, Zijlstra E, Ali M, Ghalib H, Satti M, Eltoun B, El-Hassan A. Congenital kala-azar and leishmaniasis in the placenta. *Am J Trop Med Hyg*. 1992;46:57–62.
19. Green MR, Sambrook J. Isolation of high-molecular-weight DNA using organic solvents. *Cold Spring Harb Protoc*. 2017, prot093450.
20. Grinnage-Pulley T, Scott B, Petersen CA. A mother's gift: congenital transmission of *Trypanosoma* and *Leishmania* species. *PLoS Pathog*. 2016;12:e1005302.
21. Juiz NA, Torrejon I, Burgos M, Torres AMF, Duffy T, Cayo NM, Tabasco A, Salvo M, Longhi SA, Schijman AG. Alterations in placental gene expression of pregnant women with chronic Chagas disease. *Am J Pathol*. 2018;188:1345–53.
22. Karkamo V, Kaistinen A, Nareaho A, Dillard K, Vainio-Siukola K, Vidgren G, Tuoresmaki N, Anttila M. The first report of autochthonous non-vector-borne transmission of canine leishmaniasis in the Nordic countries. *Acta Vet Scand*. 2014;56:84.
23. Krishnan L, Guilbert LJ, Russell AS, Wegmann TG, Mosmann TR, Belosevic M. Pregnancy impairs resistance of C57BL/6 mice to *Leishmania* major infection and causes decreased antigen-specific IFN-gamma response and increased production of T helper 2 cytokines. *J Immunol*. 1996;156:644–52.
24. Landmann E, Reiss I, Misselwitz B, Gortner L. Ponderal index for discrimination between symmetric and asymmetric growth restriction: percentiles for neonates from 30 weeks to 43 weeks of gestation. *J Matern Fetal Neonatal Med*. 2006;19:157–60.
25. Logiodice F, Lombardelli L, Kullolli O, Haller H, Maggi E, Rukavina D, Piccinni MP. Decidual interleukin-22-producing CD4+T cells (Th17/Th0/IL-22+ and Th17/Th2/IL-22+, Th2/IL-22+, Th0/IL-22+), which also produce IL-4 are involved in the success of pregnancy. *Int J Mol Sci*. 2019;20.
26. Low G, Cooke W. A congenital case of kala-azar. *Lancet*. 1926;208:1209–11.
27. Martins-Melo F, Lima MS, Ramos Aj, Alencar C, Heukelbach J. Mortality and case fatality due to visceral leishmaniasis in Brazil: a nationwide analysis of epidemiology, trend and spatial patterns. *PLoS One*. 2014;9:e93770.
28. McKelvey KJ, Yenson VM, Ashton AW, Morris JM, McCracken SA. Embryonic/fetal mortality and intrauterine growth restriction is not exclusive to the CBA/J sub-strain in the CBA × DBA model. *Sci Rep*. 2016;6:35138.
29. Melo G, Goyard S, Lecoeur H, Rouault E, Pescher P, Fiette L, Boissonnas A, Minoprio P, Lang T. New insights into experimental visceral leishmaniasis: real-time in vivo imaging of *Leishmania donovani* virulence. *PLoS Negl Trop Dis*. 2017;11:e0005924.
30. Mera y Sierra R, Neira G, Cargnelutti D. Dissemination of visceral leishmaniasis to Western Argentina: When will imported canine vector-borne zoonotic diseases start being local? *J Microbiol Immunol Infect*. 2016;50:727–9.
31. Mescouto-Borges M, Maués É, Costa D, da Silva Pranchevicius M, Romero G. Congenitally transmitted visceral leishmaniasis: report of two Brazilian human cases. *Braz J Infect Dis*. 2013;17:263–6.
32. Miner J, Cao B, Govero J, Smith A, Fernandez E, Cabrera O, Garber C, Noll M, Klein R, Noguchi K, Mysorekar I, Diamond M. Zika virus infection during pregnancy in mice causes placental damage and fetal demise. *Cell*. 2016;165:1081–91.
33. Morgan D, Guimaraes L, Machado P, D'Oliveira A, Almeida R, Lago E, Faria D, Tafuri W, Dutra W, Carvalho E. Cutaneous leishmaniasis during pregnancy: exuberant lesions and potential fetal complications. *Clin Infect Dis*. 2007;45:478–82.
34. Naucke TJ, Lorentz S. First report of venereal and vertical transmission of canine leishmaniasis from naturally infected dogs in Germany. *Parasit Vectors*. 2012;5:1–5.
35. Nicolas L, Prina E, Lang T, Milon G. Real-time PCR for detection and quantitation of *Leishmania* in mouse tissues. *J Clin Microbiol*. 2002;40:1666–9.
36. Nicolas L, Sidjanski S, Colle J, Milon G. *Leishmania* major reaches distant cutaneous sites where it persists transiently while persisting durably in the primary dermal site and its draining lymph node: a study in laboratory mice. *Infect Immun*. 2000;68:6561–6.
37. Osorio Y, Rodriguez L, Bonilla D, Peniche A, Henao H, Saldarriaga O, Travi B. Congenital transmission of experimental leishmaniasis in a hamster model. *Am J Trop Med Hyg*. 2012;86: 812–20.
38. Rosypal A, Lindsay D. Non-sand fly transmission of a North American isolate of *Leishmania infantum* in experimentally infected BALB/c mice. *J Parasitol*. 2005;91:1113–5.
39. Rosypal A, Troy G, Zajac A, Frank G, Lindsay D. Transplacental transmission of a North American isolate of *Leishmania infantum* in an experimentally infected beagle. *J Parasitol*. 2005;91:970–2.
40. Sala MA, Lopez AR, Arraro Abrahao AA, Meneguette C. Efecto de la infección aguda por diferentes cepas de *Trypanosoma cruzi* sobre el crecimiento intrauterino de fetos de ratón. *Parasitol latinoam*; 2006. p. 69–73.
41. Salomon OD, Quintana MG, Mastrangelo AV, Fernandez MS. Leishmaniasis and climate change-case study: Argentina. *J Trop Med*. 2012;2012:1–11.
42. Sanchez M, Eliçabe R, Di Genaro M, Germanó M, Gea S, Garcia Bustos M, Salomón M, Scodeller E, Cargnelutti D. Total *Leishmania* antigens with Poly (I: C) induce Th1 protective response. *Parasite Immunol*. 2017;39:e12491.
43. Schröder KDIL, PhD Thesis on Veterinary Medical Embryonic resorption – a longitudinal ultrasonographic study in the model species European brown hare (*Lepus europaeus* PALLAS, 1778). Freien Universität Berlin; 2015.
44. Singhal S, Roy KK, Kumar S, Meena J, Bharti J, Shekhar B. Pregnancy with massive splenomegaly: a case series. *Natl Med J India*. 2018;31:146–8.
45. Trunov A, Gorbenko OO, Shvayk O, Trunova AL. Cytokines and infertility influence of cytokines and local inflammation in women of reproductive age with infertility. *J Cytokine Biol*. 2016;1:102–9.
46. Uraki R, Jurado K, Hwang J, Szigeti-Buck K, Horvath T, Iwasaki A, Fikrig E. Fetal growth restriction caused by sexual transmission of zika virus in mice. *J Infect Dis*. 2017;215:1720–4.
47. van Griensven J, Diro E. Visceral leishmaniasis. *Infect Dis Clin North Am*. 2012;26:309–22.