

*Using occupancy models to assess the direct and indirect impacts of agricultural expansion on species' populations*

**Asunción Semper-Pascual, Julieta Decarre, Matthias Baumann, Micaela Camino, Yamil Di Blanco, Bibiana Gómez-Valencia, et al.**

**Biodiversity and Conservation**

ISSN 0960-3115

Biodivers Conserv

DOI 10.1007/s10531-020-02042-1



**Your article is published under the Creative Commons Attribution license which allows users to read, copy, distribute and make derivative works, as long as the author of the original work is cited. You may self-archive this article on your own website, an institutional repository or funder's repository and make it publicly available immediately.**



# Using occupancy models to assess the direct and indirect impacts of agricultural expansion on species' populations

Asunción Semper-Pascual, et al. [full author details at the end of the article]

Received: 12 July 2019 / Revised: 4 August 2020 / Accepted: 14 August 2020  
© The Author(s) 2020

## Abstract

Land-use change is a global threat to biodiversity, but how land-use change affects species beyond the direct effect of habitat loss remains poorly understood. We developed an approach to isolate and map the direct and indirect effects of agricultural expansion on species of conservation concern, using the threatened giant anteater (*Myrmecophaga tridactyla*) in the Gran Chaco as an example. We reconstructed anteater occupancy change between 1985 and 2015 by fitting single-season occupancy models with contemporary camera-trap data and backcasting the models to 1985 and 2000 land-cover/use maps. Based on this, we compared the area of forest loss (direct effect of agricultural expansion) with the area where forests remained but occupancy still declined (indirect effect of agricultural expansion). Anteater occupancy decreased substantially since 1985, particularly after 2000 when agriculture expanded rapidly. Between 1985 and 2015, ~ 64,000 km<sup>2</sup> of forest disappeared, yet occupancy declined across a larger area (~ 102,000 km<sup>2</sup>), extending far into seemingly untransformed habitat. This suggests that widespread sink habitat has emerged due to agricultural land-use change, and that species may lose their habitat through direct and indirect effects of agricultural expansion, highlighting the urgent need for broad-scale conservation planning in the Chaco. Appropriate management responses could proactively protect more habitat where populations are stable, and restore habitat or address causes of mortality in areas where declines occur. Our work also highlights how occupancy modelling combined with remote sensing can help to detect the direct and indirect effects of agricultural expansion, providing guidance for spatially targeting conservation strategies to halt extinctions.

**Keywords** Deforestation · Giant anteater · Gran chaco · Land-use change · Tropical dry forests and savannas

---

Communicated by Xiaoli Shen.

**Electronic supplementary material** The online version of this article (<https://doi.org/10.1007/s10531-020-02042-1>) contains supplementary material, which is available to authorized users.

## Introduction

We are currently experiencing the highest extinction rates in Earth's history, mainly due to habitat destruction (Ceballos et al. 2015). This is particularly the case in the tropics and subtropics, where agricultural expansion and intensification are causing widespread destruction of natural vegetation (Laurance 2010). Understanding the effects of land-use change on biodiversity in these regions is therefore essential (Newbold et al. 2015), especially where agriculture expands into forests (Kehoe et al. 2017).

The most direct impact of agricultural expansion on biodiversity occurs via habitat loss and degradation. Fragmentation can also affect species directly by decreasing dispersal among patches (Hanski 2015). Additionally, indirect effects of agricultural land-use change can be observed, for instance through edge effects (Smith et al. 2018). This is because the accessibility of forest patches to humans increases in fragmented landscapes, and thus hunting pressure or forest fires can exert increasing pressure on species (Corlett 2007; Tabarelli et al. 2004). For example, human presence and hunting pressure are typically higher along edges of forests and protected areas (Brashares et al. 2001; Wittemyer et al. 2008). Likewise, hunting commonly occurs in or around areas where agriculture expands (Peres 2001; Romero-Muñoz et al. 2019, 2020b; Semper-Pascual et al. 2019). Moreover, road expansion due to agricultural expansion not only increases accessibility, but also facilitates movements by animals, thus increasing the risk of road kills (Laurance et al. 2006, 2009). Finally, habitat fragmentation also alters biophysical conditions which in turn affect species distributions (Brook et al. 2008). Such effects go beyond the direct conversion of habitat through agricultural expansion, but are a consequence of this land-use change. We therefore refer to such effects as indirect effects of agricultural expansion. Indirect effects are typically hard to detect and thus often overlooked, despite their importance (Brook et al. 2008). Approaches for identifying where and how indirect effects impact species of conservation concern are therefore needed.

Much of the work assessing the impacts of agricultural expansion on biodiversity has relied on models based on presence-only data (Gaston 2009; Guillera-Aroita et al. 2015), either for individual species [e.g., habitat, Romero-Muñoz et al. (2019)] or entire communities [e.g., richness, Ferrier and Guisan (2006)]. Models based on this type of data can capture where species potentially occur, but are insensitive to detecting periods of population decline that precede local extirpation (Hobbs and Mooney 1998). Yet local extinctions can be preceded by many years of population decline (Hylander and Ehrlén 2013; Norris 2016), thus providing a window of opportunity to prevent those losses. Unfortunately, identifying these windows of opportunity is hard, as parametrizing models that can capture population trends, such as capture-recapture models (Chandler and Royle 2013), are unfeasible or too costly for many species. Operational tools for detecting windows of opportunity preceding local extinctions are therefore often missing.

Estimating species occupancy can be a viable alternative. Occupancy is defined as the probability of a site being occupied by a species (MacKenzie et al. 2002), and changes in occupancy provide a robust proxy for population declines, especially useful for elusive species which are difficult to detect (Beaudrot et al. 2016). Yet, even though occupancy models are increasingly used in conservation (Guillera-Aroita 2017), studies typically focus on a single time period (Lindenmayer et al. 2012). Developing approaches which allow us to track occupancy in space and time would therefore be highly useful for mapping where population declines might be ongoing.

Furthermore, most occupancy studies assessing the impacts of agricultural expansion on biodiversity typically do not distinguish between direct and indirect effects (Barlow et al. 2016; Gibson et al. 2011; Raiter et al. 2014). However, distinguishing between direct and indirect effects is crucial to spatially targeting conservation actions, in order to halt population declines of species of conservation concern. For example, proactively protecting remaining habitat from being converted should focus on areas where populations are not already declining due to anthropogenic factors (Gilroy and Edwards 2017). Conversely, other reactive conservation measures might be warranted to reduce mortality in landscapes where threatened species are in decline (e.g., anti-poaching measures, habitat restoration, corridor planning), especially if declines occur inside protected areas.

Here, we develop a new approach that backcasts occupancy models to separate the direct and indirect effects of agricultural expansion, using the Giant Anteater (*Myrmecophaga tridactyla*) (hereafter: anteater) as an example. Anteaters occur widely in Central and South America and the species is listed as vulnerable by the International Union for Conservation of Nature (IUCN) due to a  $\sim 30\%$  population loss during the last decades (Miranda et al. 2014). Forest is the most important vegetation type for anteaters (Di Blanco et al. 2015), however, other studies have shown that they can also be associated with open habitats [e.g., grasslands or savannas; Di Blanco et al. (2015), Medri and Mourão (2005)]. Anteaters can also occur in anthropogenic landscapes when these landscapes provide food resources (Pardo et al. 2019). Although habitat loss has been proposed as a main threat to the species (Miranda et al. 2014), the effects of agricultural expansion on anteaters are poorly understood. To our knowledge, no study has evaluated how agricultural expansion affects anteater populations directly (e.g., through habitat conversion) and indirectly (e.g., through edge effects) anywhere in their range.

The overarching goal of our study was to estimate giant anteater occupancy in the Argentine Dry Chaco, based on contemporary camera-trap data and contemporary land-cover/use maps. We then projected this occupancy model to past land-cover/use maps from 1985 and 2000 to reconstruct anteater occupancy changes in relation to agricultural expansion. Specifically, we addressed three research questions:

1. What factors influence contemporary anteater occupancy in the Argentine Dry Chaco?
2. How did agricultural expansion influence anteater occupancy between 1985 and 2015?
3. What is the relative importance of direct versus indirect effects of agricultural expansion on anteater occupancy changes?

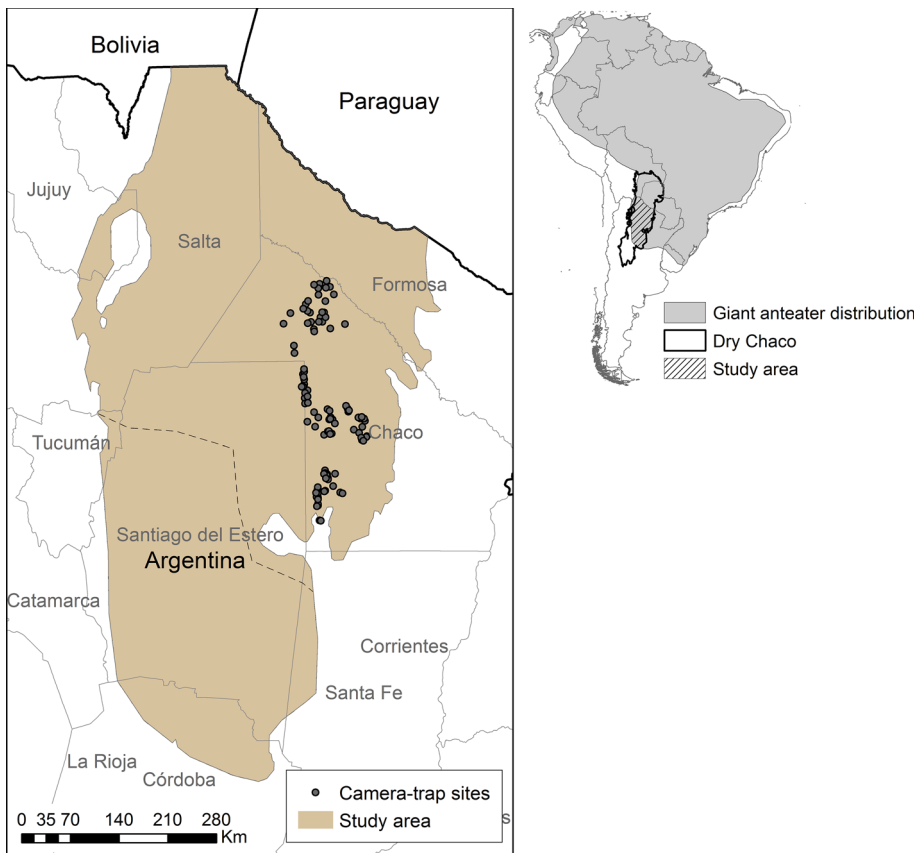
## Methods

### Study area

The Gran Chaco is the largest tropical/subtropical dry forest worldwide (1.1 million km<sup>2</sup>), extending into Argentina, Paraguay, Bolivia, and Brazil. The ecoregion is characterized by heterogeneous landscapes, with forests as the dominant land-cover ( $\sim 60\%$  of the study region), followed by open habitats such as pastures ( $\sim 15\%$ ) and natural grasslands and savannas ( $\sim 10\%$ ) (Baumann et al. 2017). Although the Chaco harbors high biodiversity (TNC et al. 2005), growing demand for beef and soybean have led to rapid agricultural expansion (Fehlenberg et al. 2017), especially after 2000. In fact, between 1985 and 2013, 20% of all forest in the Chaco was lost due to agriculture expansion for cropland (38.9% of

all forest losses) or pastures (61.1% of all forest losses) (Baumann et al. 2017), strongly threatening biodiversity (Periago et al. 2015; Semper-Pascual 2018).

We assessed giant anteater occupancy across the Argentine Dry Chaco. By focusing on the Dry Chaco only (i.e., excluding the Wet Chaco), we ensured that environmental conditions were fairly homogeneous across our entire study area. To delineate our specific study area, we overlaid the boundary of the Argentine Dry Chaco ecoregion with the anteater range according to the IUCN (Fig. 1, ~ 33 million ha). Our study area has a highly seasonal climate, with precipitation ranging from 450 to 900 mm and annual temperatures ranging between + 42 °C in summer to − 7 °C in winter (Boletta et al. 2006; Minetti et al. 1999).



**Fig. 1** Location of the study area in South America (top-right corner map) and northern Argentina. Study area boundaries are demarcated by the overlap of the (1) Argentine Dry Chaco ecoregion boundaries with (2) anteater range according to the IUCN. Survey1 was carried out in the center of the Chaco province, survey2 in the south of the Chaco province and survey3 in the north of the Chaco province. Dotted line separates extant (north) and historic (south) giant anteater range. Names in Argentina refer to provinces

## Anteater data

We combined camera-trap data from three surveys which were all established to assess the mammal community structure in the study area: the first survey (survey1) was carried out in 2013 (Decarre 2015), the second survey (survey2) in 2014–2015 (Gómez-Valencia 2017) and the last survey (survey3) in 2016–2017 (Proyecto Quimilero). Camera-trap sites were distributed across the extant range of the species (northern part of the study area, Fig. 1). We did not sample the southern part of the study area, as according to the current IUCN range map, anteaters are absent there (Miranda et al. 2014). Sites were selected randomly while avoiding trails, to sample the full diversity of vegetation types in the region, and to avoid bias due to high capture rates along trails (Kolowski and Forrester 2017; Wearn et al. 2013). In addition, such a sampling design has been recommended for estimating occupancy (Burton et al. 2015; Wearn et al. 2013). Camera-trap sites were separated by at least 1500 m from one another, a distance approximately representing the radius of an average circular anteater home range (Table S1). Further details on the camera placement are provided in Online Appendix S1.

## Predictor variables

We used four variables for modelling anteater detection probability: *camera-trap survey*, *sampling effort*, *temperature*, and *precipitation* (Tables 1, S2). For occupancy probability, we selected four landscape variables known to influence anteater habitat selection: *percentage of forest cover*, *percentage of open habitats*, *percentage of edge* between forest and open habitats, and a *diversity index* of suitable habitats (i.e., forest and open habitats) (Tables 1, S2). Importantly, these variables by themselves are not measures of direct or indirect effects of agricultural expansion.

The entire range of each landscape variable was represented by our camera-traps (Fig. S1). Given that camera-trap data were collected during different years, we used two high-resolution (30 m) land-cover/use maps to relate each camera-trap site to the corresponding land-cover/use map. We therefore related the camera-trap sites from survey1 to a land-cover/use map from 2013 (Baumann et al. 2017) and the camera-trap sites from survey2 and survey3 to an updated land-cover/use map from 2015 consistent with Baumann et al. 2017 (Fig. S2). We thus parametrized one single model. Such a modelling approach (i.e., time-calibrated model) is widely used and has several advantages compared to models based on data from a single time period (Kuemmerle et al. 2012; Nogués-Bravo 2009; Romero-Muñoz et al. 2019; Sieber et al. 2015). Time-calibrated models use all available data to parameterize a single model not linked to a specific time period, to then project this model into different time periods (Nogués-Bravo 2009). Consequently, time-calibrated models describe species' niches more fully, are less prone to sampling bias and ensure that observed changes are solely due to changes in predictor variables (and not due to different model parameterizations) (Kuemmerle et al. 2012; Nogués-Bravo 2009). The latter is particularly important in the context of our goal to separate the direct from the indirect effects of agricultural expansion.

To derive landscape indices, we used Morphological Spatial Pattern Analysis (Vogt et al. 2007) and Shannon's diversity index (McGarigal et al. 2012) and summarized them using a 1500 m radius circular moving window. We also tested a larger radius, however, as models based on variables for the 1500 m circular radius fitted best and align with home range estimates, we only show these results. In addition to the landscape variables, we



**Table 1** Variables for estimating anteater detection probability and occupancy probability based on Desbiez and Medri (2010), Di Blanco et al. (2015, 2017) and Medri and Mourão (2005)

Variable	Description	Hypothesis
Detection		
Survey	Camera-trap survey	Different study designs could lead to different detection probabilities
Effort	Number of days that the camera-traps were active	The probability of detecting individuals should be higher with increasing survey effort
Temp <sup>a</sup>	Mean temperature of the month when the cameras were active	Anteaters are less active during extreme temperatures (i.e., too hot or cold) and probability of detection should decrease
Prec <sup>a</sup>	Mean precipitation of the month when the cameras were active and the month before	During the dry season, anteaters walk longer distances to find water and probability of detection should increase
Occupancy		
Landscape structure (measured within a 1500 m radius from the cell)		
Forest	Percentage of forest	Anteaters use woody vegetation to shelter and rest. Forests also provide microclimates to help regulate body temperature
OpenHabitat <sup>b</sup>	Percentage of open habitat (grasslands, savannas and pastures)	Anteaters use grasslands and savannas for foraging
Edge	Percentage of pixels located between forest and open habitat patches	Anteaters prefer areas where food resources and refuges are in close proximity
Diversity <sup>b</sup>	Shannon's diversity index considering only suitable land-use classes (forests, grasslands, savannas and pastures) (McGarigal et al. 2012)	Anteaters prefer heterogeneous landscapes where they can find areas for both resting and feeding
Human disturbance		
Sett	Euclidean distance to the closest settlement	Anteaters avoid areas with high human pressure
Roads	Euclidean distance to the closest road (both paved and non-paved)	Roads are an indicator of disturbance (e.g., providing access for hunters)
PavRoads <sup>b</sup>	Euclidean distance to the closest paved road	Paved roads are accessible after heavy rains contrary to non-paved roads and human disturbance is expected to be more persistent

<sup>a</sup>Correlated variables ( $r \geq 0.6$ ) that were not included in the same detection model

<sup>b</sup>Correlated variables ( $r \geq 0.6$ ) removed from the final dataset for modelling occupancy. Since forest is considered essential habitat for the species (Di Blanco et al. 2015), when two variables were correlated we retained the one including forest (i.e., *forest* and *edge*)

included three variables reflecting human disturbance: *distance to settlements*, *distance to roads*, and *distance to paved roads* (Tables 1, S2). Importantly, all these human-disturbance indicators were time-invariant (i.e., they were calculated using data from ~ 2015), as we assumed that expansion of main roads or settlements did not greatly affect the region during the study period (Romero-Muñoz et al. 2020a).



We aggregated all variables to a 300 m pixel resolution, using an equal-area coordinate system. This pixel resolution is much smaller than the average anteater home range ( $\sim 9 \text{ km}^2$ , Table S1). We standardized all variables (0 = mean, 1 = standard deviation) and checked for collinearity. When two variables were correlated (Spearman correlation coefficient  $\geq 0.6$ ), we retained the ecologically more meaningful variable (Table 1).

## Modeling anteater occupancy

We used a likelihood-based, single-season occupancy model (MacKenzie et al. 2017) to estimate anteater occupancy ( $\Psi$ ) in relation to landscape and human disturbance variables, while accounting for detectability ( $p$ ). During wildlife surveys, individuals are often unobserved, either because they are truly absent at the sampling site, or because they are present, but undetected. Visiting each sampling site on multiple occasions enables the estimation of detection probability, which can be incorporated into the occupancy modelling to correct for imperfect detection (MacKenzie et al. 2002).

We generated sampling occasions by pooling daily detection/non-detection records for each sampling site into consecutive camera-days. We carried out sensitivity analyses to check for differences in occupancy and detection estimates when pooling daily detection/non-detection records into different number of camera-days. We defined an occasion as an interval of seven camera-days (see Fig. S3). We only included sites that were actively surveyed for more than 21 consecutive days to obtain a minimum of three occasions per site, and a maximum of 84 days (i.e., 12 occasions) to account for the closure assumption of occupancy models. Therefore, we estimated true occupancy as we assumed that changes in occupancy between occasions did not occur. The number of occasions per site ranged between 3 and 12 (mean = 6.1) with a sampling effort per site ranging from 21 to 84 days (mean = 43). The final sample included a total of 106 camera-trap sites.

Occupancy models link a state model determining occupancy at each site with an observation model for detection which is conditional on occupancy. We first modelled detection probability and then occupancy probability. To model detection probability, we only included detection variables, using a null occupancy model. We considered all possible combinations of variables, while excluding correlated variables in the same model, and tested a quadratic effect of *temperature* as we hypothesized that anteater detection is lower during extreme temperatures. We ranked the resulting models using Akaike's Information Criterion, corrected for small sample size [AICc; Burnham and Anderson (2002)], where the detection model with the lowest AICc is best-fitting.

To model occupancy probability, we kept the best-fitting detection model constant and included variables that could affect anteater occupancy. We excluded correlated variables (see Table 1) and built six candidate models (Table 2). Given that habitat loss is the main threat to anteaters (Miranda et al. 2014), we built a first set of candidate models testing all possible combinations of landscape structure variables. In addition, to test whether human disturbance may affect anteater occupancy, we built a second set of candidate models in which we included human disturbance variables to the models from the first set (Table 2). We compared all resulting models, ranked them according to AICc and considered models with a  $\Delta\text{AICc} < 2$  to be competing. We used model averaging by calculating weighted average estimates based on models with  $\Delta\text{AICc} < 2$  and following Burnham and Anderson (2002). To assess model fit, we ran a goodness-of-fit test on the global model and calculated an overdispersion parameter ( $\hat{c}$ ) (MacKenzie and Bailey 2004), using 10,000

**Table 2** Candidate models ranked by AICc

Model	Variables	AICc	$\Delta$ AICc	AICc <sub>w</sub>
Detection				
<b>M_11</b>	$p$ ( <i>Temp</i> + <i>Survey</i> ) ~ $\Psi$ ( <i>I</i> )	<b>379.19</b>	<b>0.00</b>	<b>0.47</b>
M_9	$p$ ( <i>Temp</i> + <i>Effort</i> + <i>Survey</i> ) ~ $\Psi$ ( <i>I</i> )	381.43	2.24	0.15
M_6	$p$ ( <i>Temp</i> + I( <i>Temp</i> <sup>2</sup> ) + <i>Survey</i> ) ~ $\Psi$ ( <i>I</i> )	381.44	2.25	0.15
M_3	$p$ ( <i>Survey</i> ) ~ $\Psi$ ( <i>I</i> )	382.69	3.50	0.08
M_8	$p$ ( <i>Temp</i> ) ~ $\Psi$ ( <i>I</i> )	404.15	24.96	0.00
Occupancy				
<b>M_1</b>	$p$ ( <i>Temp</i> + <i>Survey</i> ) ~ $\Psi$ ( <i>Forest</i> )	<b>375.10</b>	<b>0.00</b>	<b>0.40</b>
<b>M_3</b>	$p$ ( <i>Temp</i> + <i>Survey</i> ) ~ $\Psi$ ( <i>Forest</i> + <i>Edge</i> )	<b>375.86</b>	<b>0.76</b>	<b>0.28</b>
<b>M_4</b>	$p$ ( <i>Temp</i> + <i>Survey</i> ) ~ $\Psi$ ( <i>Forest</i> + <i>Roads</i> + <i>Sett</i> )	<b>376.96</b>	<b>1.87</b>	<b>0.16</b>
M_Null	$p$ ( <i>Temp</i> + <i>Survey</i> ) ~ $\Psi$ ( <i>I</i> )	379.19	4.10	0.05
M_6	$p$ ( <i>Temp</i> + <i>Survey</i> ) ~ $\Psi$ ( <i>Forest</i> + <i>Edge</i> + <i>Roads</i> + <i>Sett</i> )	379.35	4.25	0.05
M_5	$p$ ( <i>Temp</i> + <i>Survey</i> ) ~ $\Psi$ ( <i>Edge</i> + <i>Roads</i> + <i>Sett</i> )	379.91	4.81	0.04
M_2	$p$ ( <i>Temp</i> + <i>Survey</i> ) ~ $\Psi$ ( <i>Edge</i> )	380.72	5.62	0.02

The first part of the table lists the detection models (only top models and the null model are presented; best-fitting model in bold), the second part shows the occupancy models (models with  $\Delta$ AICc < 2 in bold). Akaike weights (AICc<sub>w</sub>) quantifies the probability of each model being the best model

$p$  probability of detection,  $\Psi$  probability of occupancy

bootstrap replicates and the Pearson  $\chi^2$  statistics. We fitted our models using the R package *unmarked* (Fiske and Chandler 2011).

## Mapping changes in anteater occupancy over time

To map changes in anteater occupancy over time, we used our single-season, time-calibrated model to predict anteater occupancy for the years 2015, 2000, and 1985. The year 2015 represents the average year of our sampling period and the most recent land-cover/use map for our study area. The year 2000 marks the beginning of the period when land conversion drastically increased. Finally, 1985 marks a baseline before this wave of conversion and fine-scale satellite images are available for land-use classifications.

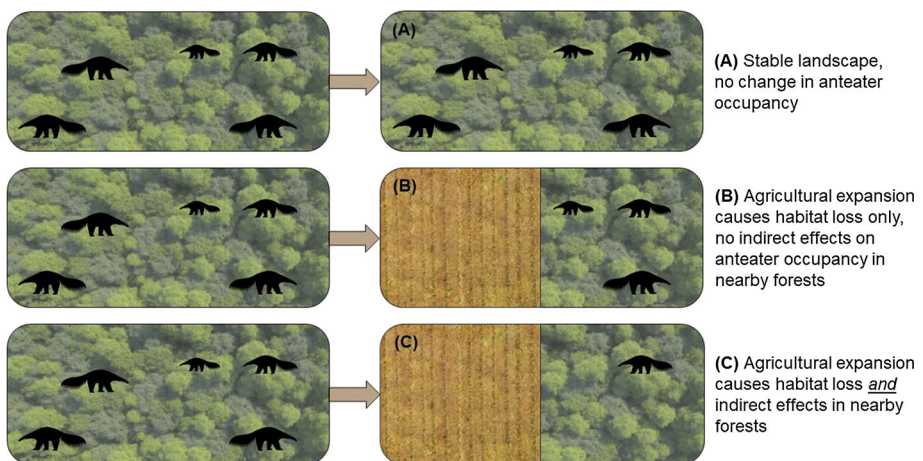
Our approach relied on several assumptions. First, we assumed that the relationship between anteater occupancy and landscape variables remained unchanged over the study period, meaning that factors describing contemporary anteater occupancy would also describe past anteater occupancy. Second, land-cover/use variables were the only time-variant variables in our models as we assumed that no major changes in terms of roads/settlements expansion occurred during the study period. Finally, agricultural expansion is the dominant process leading to change in land-cover. Therefore, if our models find differences in anteater occupancy across time, we assume that these differences can only arise from effects of agricultural expansion on our predictor variables.

To predict current anteater occupancy across our study area, we used model-averaged estimates derived from our time-calibrated occupancy model and the land-cover/use map from 2015. We then backcasted anteater occupancy by projecting the same model to the past land-cover/use maps from 1985 to 2000 (Fig. S2). Habitat models have been widely

used to predict habitat across larger regions, as well as to reconstruct past habitat (Tapia et al. 2018; Varela et al. 2009). Predictions are considered to be reliable when they are made within the range of environmental conditions used for model building, in our case the contemporary data (Elith and Leathwick 2009). To ensure we predicted to similar environmental conditions as those represented by our data, we compared the distributions of predictor variables at the camera-trap sites with the overall distribution of the predictor variables for the study area and for each time period we assessed (Figs. S4, S5). This showed that even though we projected our models across large areas in space and back in time, we did not predict anteater occupancy to areas with environmental conditions not represented by the data used to calibrate our models. In other words, while we projected our models to large areas, we did not extrapolate.

To estimate changes in anteater occupancy over time, we calculated the difference in occupancy predictions for each 300 m pixel between (1) 1985–2000 (i.e., occupancy predictions in 2000 minus occupancy predictions in 1985), (2) 2000–2015, and (3) 1985–2015. We assessed the uncertainty of the resulting predictions using a parametric bootstrap procedure (Davison and Hinkley 1997) with 10,000 replications. Further details on the uncertainty assessment are provided in Fig. S6.

To assess the relative importance of direct versus indirect effects of agricultural expansion on occupancy, we compared the area in which occupancy declined with the area directly affected by forest loss due to agricultural expansion (i.e., conversion from forest to cropland and pasture). We only considered conversions from forest to cropland and pasture, not conversions of other habitats such as grasslands and savannas, since forest is considered essential habitat for the species (Di Blanco et al. 2015; Mourão and Medri 2007), and as other land uses are not widespread in the study area. We refer to the direct effect of agricultural expansion as those areas where forest was converted. An indirect effect of agricultural expansion occurs in those areas where occupancy declined yet forests were stable during the observation period (Fig. 2). In these areas, a decrease in anteater



**Fig. 2** Direct and indirect effects of agricultural expansion on anteater occupancy. Agricultural expansion affects anteater population declines directly where forest is converted to croplands or pastures. However, anteater population declines can additionally occur in nearby forests via indirect effects of agricultural expansion, for example due to the expansion of roads, heavier traffic, easier access for hunters, or fires escaping from agricultural land. In our model, such effects collectively lead to declining anteater occupancy in otherwise stable forests

occupancy can only be attributed to indirect effects of agricultural expansion (e.g., increase of human pressure along forest edges or expansion of logging-trails).

## Results

Our dataset contained 71 independent anteater captures over 4508 trap-days (mean capture rate = 1.57 captures/100 trap-days). The naïve occupancy (i.e., proportion of sites with at least one detection) was 42%. Our best-fitting detection model contained the variables *survey* and *temperature* (Table 2), indicating that detection probability varied among the three camera-trap surveys and that it increased slightly with increasing temperature. The estimated detection probability across all sites was 0.14 (SE = 0.03).

The landscape variable *percentage of forest* had the strongest influence on occupancy probability and was selected in all three top models ( $\Delta\text{AICc} < 2$ ). The best-fitting model included only *percentage of forest* (Table 2). The second-best model also included *percentage of edge*, and the third-best model additionally included *distance to roads* and *settlements*. Model-averaged coefficients also corroborated that *percentage of forest* was the most important variable, with a positive effect on anteater occupancy (Table 3 and Fig. S7). *Percentage of edge* had also a positive effect on occupancy, but weaker than *percentage of forest* (Table 3). Regarding the human disturbance variables, occupancy probability increased further away from *settlements*, but decreased with *distance to roads* (Table 3). The goodness-of-fit test on the global model indicated that our model fitted the field data well ( $p$  value = 0.95) and that the data were not overdispersed ( $\hat{c} = 0.05$ ).

Occupancy maps highlighted that areas with a high percentage of forest cover had the highest occupancy probabilities, while agricultural areas had the lowest occupancy probabilities (Figs. 3, S2). Areas with high occupancy values were more extensive in 1985 than in 2000, and experienced an even greater decline in area between 2000 and 2015 (Fig. 3). The mean estimated occupancy across 10,000 pixels randomly selected from the study area was 84.59% (SE = 13.23) in 1985 and 72.90% (SE = 16.18) in 2015.

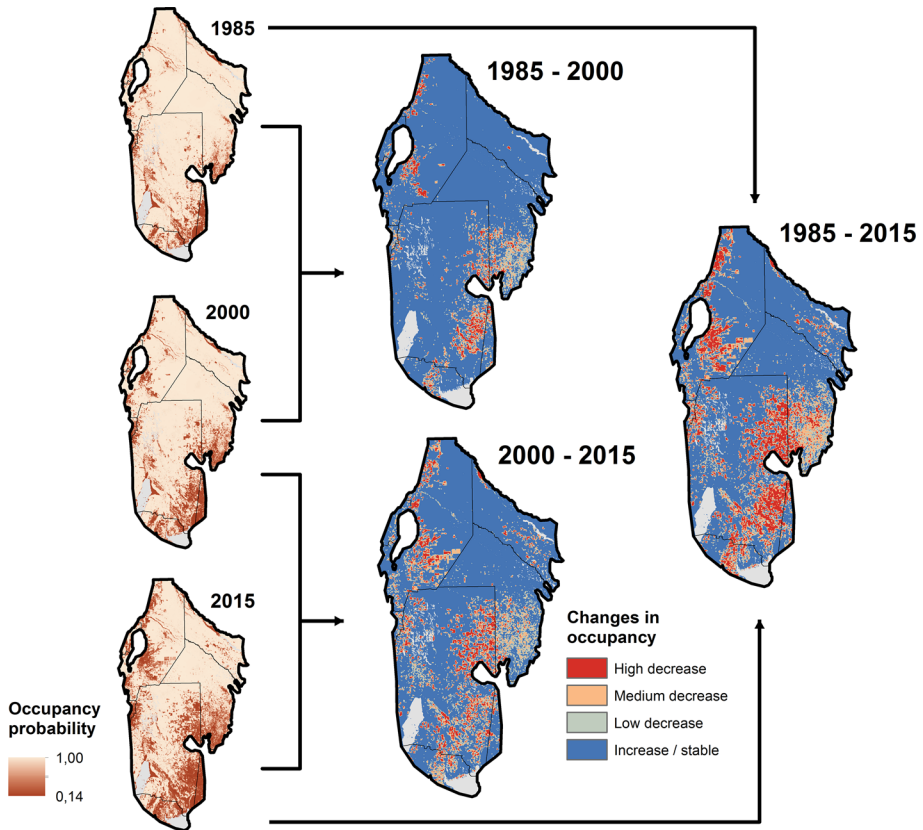
Estimated occupancy changes for individual pixels ranged from  $-84$  to  $+35\%$ . We classified occupancy changes into four categories based on quartiles (Fig. S8): (a) increase/stable occupancy where occupancy increased (increase of 6–35%) or stayed stable (increase or decrease up to 6%), (b) low decrease (6–19% decrease), (c) medium decrease (19–46% decrease), and (d) high decrease (46–84% decrease). High decreases in occupancy mainly occurred in agricultural areas (e.g., agricultural frontiers in the Chaco and Santiago del Estero provinces). Conversions to cropland typically resulted in highest occupancy decreases, whereas lower decreases were seen for conversions to pasture (Fig. S9). Areas where occupancy stayed stable or increased were widespread in 1985–2000, but became scarce in 2000–2015. The same was true for the 1985–2015 period, suggesting that anteater occupancy decreased especially after 2000. Only areas characterized by a high share of forest cover (e.g., the *El Impenetrable* region in the north of Chaco province or the Copo National Park in the north-east of Santiago del Estero province) had increasing or stable occupancy at the end of our study period (Fig. 3). The uncertainty assessment of our occupancy change map based on parametric bootstrapping indicated that the standard deviation of our predictions of occupancy change was  $\pm 8.39\%$  (Fig. S6).

To separate the direct and indirect effects of agricultural expansion, we compared the area of forest loss with the area where anteater occupancy declined in our study region. Anteater occupancy decreased over wide areas and these areas were much more extensive

**Table 3** Coefficient estimates ( $\pm$  SE) for the top three models and the model average

Detection	Occupancy								
	p			Landscape		Human disturbance			
	$p(Int)$	$p(Temp)$	$p(Survey1)$	$p(Survey3)$	$\Psi(Int)$	$\Psi(Forest)$	$\Psi(Edge)$	$\Psi(Roads)$	$\Psi(Sett)$
M_1	- 1.80 $\pm$ 0.28	0.32 $\pm$ 0.19	0.74 $\pm$ 0.37	- 1.78 $\pm$ 0.49	1.88 $\pm$ 1.36	1.40 $\pm$ 0.99			
M_3	- 1.84 $\pm$ 0.25	0.29 $\pm$ 0.18	0.63 $\pm$ 0.34	- 1.76 $\pm$ 0.48	3.36 $\pm$ 1.61	1.97 $\pm$ 1.08	1.63 $\pm$ 1.30		
M_4	- 1.74 $\pm$ 0.27	0.36 $\pm$ 0.19	0.79 $\pm$ 0.37	- 1.80 $\pm$ 0.50	1.56 $\pm$ 0.74	0.91 $\pm$ 0.59		- 0.14 $\pm$ 0.70	0.90 $\pm$ 0.60
Avg.	- 1.80 $\pm$ 0.27	0.32 $\pm$ 0.19	0.71 $\pm$ 0.36	- 1.78 $\pm$ 0.49	2.30 $\pm$ 1.55	1.50 $\pm$ 1.03	0.54 $\pm$ 1.07	- 0.03 $\pm$ 0.31	0.17 $\pm$ 0.44

All variables are standardized to 0 mean and 1 standard deviation for comparison  
 $p$  probability of detection,  $\Psi$  probability of occupancy

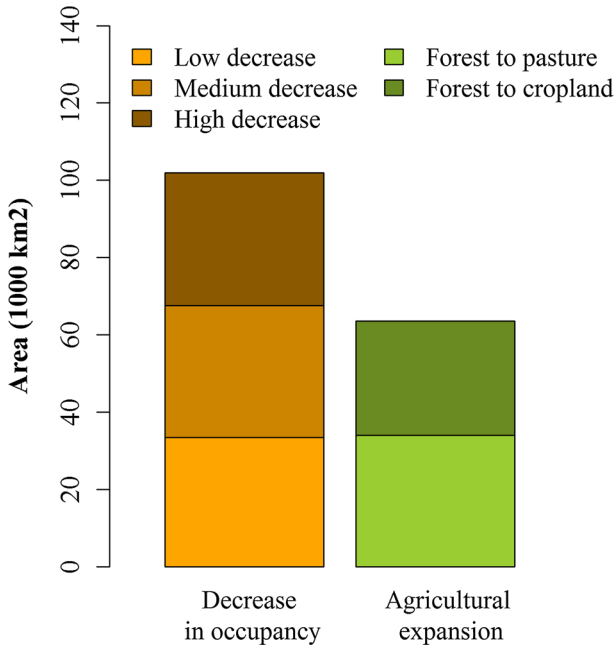


**Fig. 3** Predicted anteater occupancy for the years 1985, 2000 and 2015 (left column) and changes in anteater occupancy between (1) 1985 and 2000, (2) 2000 and 2015, and (3) 1985 and 2015 (right columns). The maps of changes in occupancy show four categories: **a** increase/stable where occupancy has increased (between 6 and 35%) or stayed stable (change  $\leq$  6%), **b** low decrease (between 6 and 19%), **c** medium decrease (between 19 and 46%), and **d** high decrease (between 46 and 84%). Permanent water bodies are depicted as light gray

than the area directly affected by forest loss. Decrease in anteater occupancy occurred over approximately 102,000 km<sup>2</sup> (31% of the study region, Fig. 4). In contrast, only 64,000 km<sup>2</sup> (20% of the study region) experienced forest conversion to agriculture, with 34,000 km<sup>2</sup> being converted to pastures and 30,000 km<sup>2</sup> to croplands (Fig. 4).

## Discussion

Agricultural expansion in the tropics is a major cause of local extinctions. Focusing on anteaters in the Argentine Dry Chaco, we demonstrate how projecting a time-calibrated occupancy model back in time can reconstruct occupancy change and separate the direct and indirect effects of agricultural expansion on species of conservation concern. Forest cover was the main driver of anteater occupancy, and consequently, the widespread deforestation driven by agricultural expansion in the Chaco has led to drastic declines in anteater occupancy, with only a relatively small proportion of the study area characterized



**Fig. 4** Decrease in anteater occupancy (low, medium, and high) versus agricultural expansion (forest conversion to cropland and to pastures)

by stable or increasing occupancy in 2015. Most areas turning from stable to declining occupancy did so after 2000, when landscape transformation increased. Importantly, anteater occupancy declined over much wider areas than those directly affected by forest loss, and occupancy declines extended far into seemingly untransformed habitat. This suggests that agricultural expansion has substantial and widespread *indirect* effects on species of conservation concern – beyond the spatial footprint of agricultural expansion itself. Stopping the decline of anteaters and other large mammals in the Chaco will thus require swift conservation action and planning, and our study can help to target both proactive and reactive management interventions to tackle ongoing defaunation. More broadly, we show how relatively simple and broadly applicable tools can help to provide a spatial template for conservation planning to mitigate the direct and indirect impacts of agricultural expansion.

Anteater occupancy was primarily affected by landscape variables, especially forest cover, and occupancy increased with forest cover. This aligns with prior research emphasizing the value of forest for anteaters (Di Blanco et al. 2015), and is reasonable given that forests provide refuge from predation and protect from extreme temperatures. Edges between forest and open habitats were also positively related to anteater occupancy, however, edges had a lower effect on occupancy than did forest. One possible explanation is that anteaters usually rest in forested areas, and use open habitats for feeding and for moving between forest patches (Desbiez and Medri 2010; Medri and Mourão 2005).

We found that anteaters avoided areas close to human settlements, but selected areas close to roads, a finding in line with other studies (Di Blanco et al. 2015; Quiroga et al. 2016; Vynne et al. 2011). Although vehicle collisions have been proposed as a main cause of anteater mortality (Miranda et al. 2014), anteaters are known to use roads to move



through agricultural landscapes (Vynne et al. 2011), and our results suggest that they do not perceive roads as a threat. Additionally, anteaters in the Chaco are rarely hunted by people (Altrichter 2006; Camino et al. 2018) and this may explain why roads, a proxy for accessibility for hunters, did not negatively affect anteater occupancy in our case. The avoidance of human settlements can be explained by the widespread presence of dogs, which can attack and kill anteaters (Lacerda et al. 2009). However, the effects of presence of dogs and humans on anteaters in the Argentine Dry Chaco were still less important than the effects of forest cover (Table S3).

Our predictions showed that much of the Argentine Dry Chaco still has a high probability of anteater occupancy, especially in the north. In contrast, the south has less potential habitat, and the species is locally extinct there. The high occupancy estimates in the north of our study area can be explained by a combination of three factors: relatively large remaining forest patches, low hunting pressure on anteaters (Altrichter 2006; Camino et al. 2018), and the absence or extremely low density of jaguars, the anteaters' main predator (Astete et al. 2008; McBride et al. 2010; Sollmann et al. 2013), in the study area (Quiroga et al. 2014; Romero-Muñoz et al. 2019).

Although our models predicted relatively high occupancy in areas with high forest cover, our occupancy change maps first and foremost showed a drastic decrease in occupancy due to forest loss driven by agricultural expansion. In areas where agriculture expanded, occupancy decreased by up to 84% between 1985 and 2015, especially after 2000, when deforestation rates in the Chaco soared due to technological innovations in agriculture (e.g., introduction of genetically modified soybean), rising global soybean prices, and government incentives to foster agricultural expansion (Baumann et al. 2017; Fehlenberg et al. 2017; Goldfarb and Zoomers 2013). Areas with increasing or stable occupancy were relatively widespread during the first period, but became scarce after 2000 and are now limited to remote areas with high forest cover. Few such areas remain in the Chaco. Some of these consist of larger protected areas (Fig. S10), yet others remain beyond the current agricultural frontier. Factors explaining why agriculture has not expanded in these areas include the presence of indigenous communities, the national zoning plan that prohibits deforestation in some areas, and low market access from such regions (Piquer-Rodríguez et al. 2018).

In the Chaco, anteater occupancy decreased over an area almost twice as large as the area affected by forest loss (i.e., anteater occupancy decreased across an area of  $\sim 102,000 \text{ km}^2$  and forest loss occurred on an area of  $\sim 64,000 \text{ km}^2$ ). This suggests that agricultural expansion not only directly affects anteater occupancy via habitat conversion, but also has strong indirect effects that contribute to population declines beyond the footprint of forest conversion. For example, agricultural expansion typically leads to improvements of infrastructure and therefore, an increase in traffic, which in turn increases road mortality (Cáceres et al. 2010). Similarly, where agriculture expands, an inflow of people can occur, and pets and humans have easier access to previously remote areas. Additionally, agricultural expansion and associated human accessibility is increasing fire frequency in the Chaco (Argañaraz et al. 2015), and such fires are considered to be a key threat for the species (Miranda et al. 2014). Finally, forest loss alters local and regional climate (Brook et al. 2008), leading to drier and hotter conditions, which in turn amplify fire risk (Argañaraz et al. 2015). These potentially strong indirect effects that exceed far beyond the actual agricultural footprint are in line with findings from other regions though few studies have assessed this. For instance, extinction rates reported from West Africa were higher than those predicted by species-area models, likely due to hunting pressure along reserve edges (Brashares et al. 2001). Similarly, accessibility and hunting pressure

increased due to forest fragmentation in tropical Asian forests (Corlett 2007). Our study provides further empirical evidence for the strong synergistic effects of land-use change and other extinction drivers.

Land-cover/use variables were the only time-variant predictors included in our models. This allowed us to reveal that the indirect impact of agricultural expansion on occupancy can extend far into seemingly untransformed habitats. Three alternative explanations for occupancy declines in untransformed habitat are possible, but not plausible for anteaters in the Chaco: (1) other environmental changes, (2) hunting pressure, and (3) time-delayed effects. Regarding other environmental changes, climate change might impact anteater occupancy. However, the Argentine Dry Chaco has neither experienced marked changes in climate during our study period (Fig. S11), nor is the Chaco a climatically marginal area for anteaters, as anteaters occupy both drier and wetter areas today (Miranda et al. 2014). Hunting pressure has increased in the Chaco over the last decades (Romero-Muñoz et al. 2019), likely due to improved road infrastructure, population increase, and the decline of forested areas. However, as mentioned above, anteaters are not targeted by hunters. We are not aware of any variable not related to, and driven by, agricultural expansion that might plausibly explain the broad-scale declines in anteater occupancy.

The third alternative explanation for anteater declines in untransformed habitats is time-delayed effects of habitat loss (Brook et al. 2008; Semper-Pascual 2018). A time-delayed response would mean that historical landscape patterns (e.g., from 2000 or 1985) explain contemporary occupancy patterns better than current landscape patterns (Kuussaari et al. 2009). We tested for this and found that current occupancy patterns were best explained by current landscape patterns (Table S4), suggesting no major time-delayed effect after habitat conversion. Yet occupancy in areas where agriculture expanded recently (i.e., 2000–2015), was higher than occupancy in areas where agriculture expanded longer ago (i.e., 1985–2000) (Fig. S12), possibly because the strength of indirect effects of agricultural expansion on anteaters wanes over time.

We used a large camera-trap dataset and our occupancy framework resulted in robust models and plausible occupancy patterns. Still, some uncertainties remain. First, we used a time-calibrated model that ensures observed changes in occupancy are solely due to changes in predictor variables, and that makes full use of all available camera-trap data (Nogués-Bravo 2009). Estimating occupancy based on past anteater data would have been interesting, but no dataset that would allow this analysis exists. Second, some predictor variables did not have a strong effect on anteater occupancy, and there was considerable uncertainty surrounding the effect of these predictors (Table 3). Yet, the goodness-of-fit test indicated that our models fitted the field data adequately, and the estimated errors of our spatial predictions were small, together suggesting that our inferences were robust. This suggests robust model projections, which form the basis for our separation of direct and indirect effects of agricultural expansion (rather than directly interpreting model coefficients). Third, we predicted occupancy over a large geographic extent and back in time. These predictions were made to areas within the range of environments sampled by our camera-trap sites, and thus we did not extrapolate (Fig. S4 and Fig. S5), but we cannot fully exclude non-stationarity in the relationship between anteater occupancy and variables. Fourth, we interpreted our occupancy estimates as a proxy for population change. A high correlation between occupancy and abundance estimates has been previously demonstrated for several species (Clare et al. 2015; Linden et al. 2017; Parsons et al. 2017), however, this correlation remains untested for anteaters in the Chaco. Finally, detection probability differed among the three camera-trap surveys. We controlled for this by (1) including the variable *survey* in our detection model, and (2) relating each observation to

the site-specific environmental variables from the sampling period. Still, a more homogenized survey design (e.g., same camera-trap brand) would have been preferable.

Overall, our results provide further evidence of the impacts of agricultural expansion on biodiversity. The fact that anteaters, a species which can tolerate certain levels of anthropogenic disturbance (Quiroga et al. 2016), may be greatly affected by forest loss, suggests that the consequences of agricultural expansion may be even more drastic for strictly forest-dependent species. Identifying the effects of forest conversion on biodiversity is therefore crucial for conserving anteaters and many other species. Our results showed that besides the direct effects of agricultural expansion, indirect effects are widespread. Identifying these often-overlooked indirect effects is therefore crucial but also challenging, as they can go unnoticed in forests that seem untransformed. In such forests, however, other threats such as hunting and forest fires can exert a major pressure on wildlife (Benítez-López et al. 2017; Brook et al. 2008; Redford 1992). As the footprint of agriculture expands in many tropical areas, paying closer attention to the additional and larger footprint of indirect negative impacts on wildlife becomes crucial.

Methodologically, we demonstrated how projecting time-calibrated occupancy models over time may help to identify the indirect effects of agricultural expansion, and to separate areas affected by direct versus indirect effects. Such a spatially-explicit approach can be used to predict occupancy declines, and thus can potentially reveal population declines before critical thresholds are reached. More generally, understanding and mapping occupancy declines due to direct and indirect effects of agricultural expansion provides starting points for conservation planning and for targeting conservation action. Proactive conservation strategies (e.g., protecting remaining core habitat) should be targeted in areas where occupancy increases or remains stable, and reactive strategies (e.g., restoring sink habitat) in areas where declines are occurring due to direct forest conversion. Additionally, to counteract the indirect effects of agricultural expansion, conservation actions should focus on implementing measures to lessen such indirect effects, for example through fire regulation, especially in areas that seem untransformed but where species' declines are observed.

**Acknowledgements** Open Access funding provided by Projekt DEAL. We thank A. Ghoddousi and G. Gavier Pizarro for helpful discussions. We also thank E.A. Law and C. Wordley for checking the language. We are very grateful to the Argentine National Institute of Agrarian Technologies (INTA) for fieldwork support. We also gratefully acknowledge funding by the German Ministry of Education and Research (BMBF, Project PASANOVA, 031B0034A) and the German Research Foundation (DFG, Project KU 2458/5-1). Finally, three anonymous reviewers, an anonymous associate editor and editor Dr. K.E. Hodges are thanked for very helpful and constructive comments.

## Compliance with ethical standards

**Conflict of interest** The authors declare that they have no conflict of interest.

**Open Access** This article is licensed under a Creative Commons Attribution 4.0 International License, which permits use, sharing, adaptation, distribution and reproduction in any medium or format, as long as you give appropriate credit to the original author(s) and the source, provide a link to the Creative Commons licence, and indicate if changes were made. The images or other third party material in this article are included in the article's Creative Commons licence, unless indicated otherwise in a credit line to the material. If material is not included in the article's Creative Commons licence and your intended use is not permitted by statutory

regulation or exceeds the permitted use, you will need to obtain permission directly from the copyright holder. To view a copy of this licence, visit <http://creativecommons.org/licenses/by/4.0/>.

## References


- Altrichter M (2006) Wildlife in the life of local people of the semi-arid Argentine Chaco. *Biodivers Conserv* 15:2719–2736
- Argañaraz JP, Pizarro GG, Zak M, Landi MA, Bellis LM (2015) Human and biophysical drivers of fires in Semiarid Chaco mountains of Central Argentina. *Sci Total Environ* 520:1–12
- Astete S, Sollmann R, Silveira L (2008) Comparative ecology of jaguars in Brazil. *Cat News Special* 4:9–14
- Barlow J et al (2016) Anthropogenic disturbance in tropical forests can double biodiversity loss from deforestation. *Nature* 535:144
- Baumann M, Gasparri I, Piquer-Rodríguez M, Gavier Pizarro G, Griffiths P, Hostert P, Kuemmerle T (2017) Carbon emissions from agricultural expansion and intensification in the Chaco. *Glob Change Biol* 23:1902–1916
- Beaudrot L et al (2016) Standardized assessment of biodiversity trends in tropical forest protected areas: the end is not in sight. *PLoS Biol* 14:e1002357
- Benítez-López A, Alkemade R, Schipper A, Ingram D, Verweij P, Eikelboom J, Huijbregts MAJ (2017) The impact of hunting on tropical mammal and bird populations. *Science* 356:180–183
- Boletta PE, Ravelo AC, Planchuelo AM, Grilli M (2006) Assessing deforestation in the Argentine Chaco. *For Ecol Manag* 228:108–114
- Brashares JS, Arcece P, Sam MK (2001) Human demography and reserve size predict wildlife extinction in West Africa. *Proc R Soc Lond B* 268:2473–2478
- Brook BW, Sodhi NS, Bradshaw CJ (2008) Synergies among extinction drivers under global change. *Trends Ecol Evol* 23:453–460
- Burnham KP, Anderson DR (2002) Model selection and multi-model inference: a practical information-theoretic approach, 2nd edn. Springer, New York
- Burton AC et al (2015) Wildlife camera trapping: a review and recommendations for linking surveys to ecological processes. *J Appl Ecol* 52:675–685
- Cáceres NC, Hannibal W, Freitas DR, Silva EL, Roman C, Casella J (2010) Mammal occurrence and roadkill in two adjacent ecoregions (Atlantic Forest and Cerrado) in south-western Brazil. *Zoologia* 27:709–717
- Camino M, Cortez S, Altrichter M, Matteucci SD (2018) Relations with wildlife of Wichi and Criollo people of the Dry Chaco, a conservation perspective. *Ethnobiol Conserv* 7:11
- Ceballos G, Ehrlich PR, Barnosky AD, García A, Pringle RM, Palmer TM (2015) Accelerated modern human-induced species losses: entering the sixth mass extinction. *Sci Adv* 1:e1400253
- Chandler RB, Royle JA (2013) Spatially explicit models for inference about density in unmarked or partially marked populations. *Ann Appl Stat* 7:936–954
- Clare JD, Anderson EM, MacFarland DM (2015) Predicting bobcat abundance at a landscape scale and evaluating occupancy as a density index in central Wisconsin. *J Wildl Manag* 79:469–480
- Corlett RT (2007) The impact of hunting on the mammalian fauna of tropical Asian forests. *Biotropica* 39:292–303
- Davison AC, Hinkley DV (1997) Bootstrap methods and their application, vol 1. Cambridge University Press, Cambridge
- Decarre J (2015) Diversity and structure of bird and mammal communities in the Semiarid Chaco Region: response to agricultural practices and landscape alterations. Imperial College London, London
- Desbiez ALJ, Medri ÍM (2010) Density and habitat use by giant anteaters (*Myrmecophaga tridactyla*) and southern tamanduas (*Tamandua tetradactyla*) in the Pantanal wetland, Brazil. *Edentata* 11:4–10
- Di Blanco YE, Jiménez Pérez I, Di Bitetti MS (2015) Habitat selection in reintroduced giant anteaters: the critical role of conservation areas. *J Mammal* 96:1024–1035
- Di Blanco YE, Desbiez AL, Jiménez-Pérez I, Kluyber D, Massocato GF, Di Bitetti MS (2017) Habitat selection and home-range use by resident and reintroduced giant anteaters in 2 South American wetlands. *J Mammal* 98:1118–1128
- Elith J, Leathwick JR (2009) Species distribution models: ecological explanation and prediction across space and time. *Annu Rev Ecol Evol Syst* 40:677–697
- Fehlenberg V, Baumann M, Gasparri NI, Piquer-Rodríguez M, Gavier-Pizarro G, Kuemmerle T (2017) The role of soybean production as an underlying driver of deforestation in the South American Chaco. *Glob Environ Change* 45:24–34

- Ferrier S, Guisan A (2006) Spatial modelling of biodiversity at the community level. *J Appl Ecol* 43:393–404
- Fiske I, Chandler R (2011) Unmarked: an R package for fitting hierarchical models of wildlife occurrence and abundance. *J Stat Softw* 43:1–23
- Gaston KJ (2009) Geographic range limits of species. The Royal Society London, London
- Gibson L et al (2011) Primary forests are irreplaceable for sustaining tropical biodiversity. *Nature* 478:378–381
- Gilroy JJ, Edwards DP (2017) Source-sink dynamics: a neglected problem for landscape-scale biodiversity conservation in the tropics current. *Landsc Ecol Rep* 2:51–60
- Goldfarb L, Zoomers A (2013) The drivers behind the rapid expansion of genetically modified soya production into the Chaco region of Argentina. In: Z. Fang (ed) *Biofuels: economy, environment and sustainability*, pp 79–95
- Gómez-Valencia B (2017) Medianos y grandes mamíferos en fragmentos de bosque de tres quebrachos, sudoeste de la provincia del Chaco. Tesis de Doctorado, Universidad De Buenos Aires, Buenos Aires
- Guillera-Arroita G (2017) Modelling of species distributions, range dynamics and communities under imperfect detection: advances, challenges and opportunities. *Ecography* 40:281–295
- Guillera-Arroita G et al (2015) Is my species distribution model fit for purpose? Matching data and models to applications. *Glob Ecol Biogeogr* 24:276–292
- Hanski I (2015) Habitat fragmentation and species richness. *J Biogeogr* 42:989–993
- Hobbs RJ, Mooney HA (1998) Broadening the extinction debate: population deletions and additions in California and Western Australia. *Conserv Biol* 12:271–283
- Hylander K, Ehlérn J (2013) The mechanisms causing extinction debts. *Trends Ecol Evol* 28:341–346
- Kehoe L, Romero-Muñoz A, Polaina E, Estes L, Kreft H, Kuemmerle T (2017) Biodiversity at risk under future cropland expansion and intensification. *Nat Ecol Evol* 1:1129
- Kolowski JM, Forrester TD (2017) Camera trap placement and the potential for bias due to trails and other features. *PLoS ONE* 12:e0186679
- Kuemmerle T, Hickler J, Olofsson J, Schurgers G, Radeloff VC (2012) Reconstructing range dynamics and range fragmentation of European bison for the last 8000 years. *Divers Distrib* 18:47–59
- Kuussaari M et al (2009) Extinction debt: a challenge for biodiversity conservation. *Trends Ecol Evol* 24:564–571
- Lacerda AC, Tomas W, Marinho-Filho J (2009) Domestic dogs as an edge effect in the Brasília National Park, Brazil: interactions with native mammals. *Anim Conserv* 12:477–487
- Laurance WF (2010) Habitat destruction: death by a thousand cuts. *Conserv Biol* 1:73–88
- Laurance WF et al (2006) Impacts of roads and hunting on central African rainforest mammals. *Conserv Biol* 20:1251–1261
- Laurance WF, Goosem M, Laurance SG (2009) Impacts of roads and linear clearings on tropical forests. *Trends Ecol Evol* 24:659–669
- Linden DW, Fuller AK, Royle JA, Hare MP (2017) Examining the occupancy–density relationship for a low-density carnivore. *J Appl Ecol* 54:2043–2052
- Lindenmayer DB et al (2012) Value of long-term ecological studies. *Aust Ecol* 37:745–757
- MacKenzie DI, Bailey LL (2004) Assessing the fit of site-occupancy models. *J Agric Biol Environ Stat* 9:300–318
- MacKenzie DI, Nichols JD, Lachman GB, Droege S, Andrew Royle J, Langtimm CA (2002) Estimating site occupancy rates when detection probabilities are less than one. *Ecology* 83:2248–2255
- MacKenzie DI, Nichols JD, Royle JA, Pollock KH, Bailey L, Hines JE (2017) *Occupancy estimation and modeling: inferring patterns and dynamics of species occurrence*. Elsevier, Amsterdam
- McBride R, Giordano A, Ballard WB (2010) Note on the winter diet of jaguars *Panthera onca* in the Paraguayan Transitional Chaco. *Bellbird* 4:1–12
- McGarigal K, Cushman SA, Ene E (2012) FRAGSTATS v4: spatial pattern analysis program for categorical and continuous maps Computer software program produced by the authors at the University of Massachusetts, Amherst. <https://www.umass.edu/landeco/research/fragstats/fragstats.html>
- Medri ÍM, Mourão G (2005) Home range of giant anteaters (*Myrmecophaga tridactyla*) in the Pantanal wetland, Brazil. *J Zool* 266:365–375
- Minetti JL et al. (1999) Atlas climático del noroeste argentino.
- Miranda F, Bertassoni A, Abba AM (2014) *Myrmecophaga tridactyla*. The IUCN Red List of Threatened Species 2014
- Mourão G, Medri Í (2007) Activity of a specialized insectivorous mammal (*Myrmecophaga tridactyla*) in the Pantanal of Brazil. *J Zool* 271:187–192
- Newbold T et al (2015) Global effects of land use on local terrestrial biodiversity. *Nature* 520:45–50

- Nogués-Bravo D (2009) Predicting the past distribution of species climatic niches. *Glob Ecol Biogeogr* 18:521–531
- Norris K (2016) Ecology: the tropical deforestation debt. *Curr Biol* 26:R770–R772
- Pardo LE, Campbell MJ, Cove MV, Edwards W, Clements GR, Laurance WF (2019) Land management strategies can increase oil palm plantation use by some terrestrial mammals in Colombia. *Sci Rep* 9:1–12
- Parsons AW, Forrester T, McShea WJ, Baker-Whitton MC, Millsbaugh JJ, Kays R (2017) Do occupancy or detection rates from camera traps reflect deer density? *J Mammal* 98:1547–1557
- Peres CA (2001) Synergistic effects of subsistence hunting and habitat fragmentation on Amazonian forest vertebrates. *Conserv Biol* 15:1490–1505
- Periago ME, Chillo V, Ojeda RA (2015) Loss of mammalian species from the South American Gran Chaco: empty savanna syndrome? *Mamm Rev* 45:41–53
- Piquer-Rodríguez M et al (2018) Drivers of agricultural land-use change in the Argentine Pampas and Chaco regions. *Appl Geogr* 91:111–122
- Quiroga VA, Boaglio GI, Noss AJ, Di Bitetti MSJO (2014) Critical population status of the jaguar *Panthera onca* in the Argentine Chaco: camera-trap surveys suggest recent collapse and imminent regional extinction. *Oryx* 48:141–148
- Quiroga VA, Noss AJ, Boaglio GI, Di Bitetti MS (2016) Local and continental determinants of giant anteater (*Myrmecophaga tridactyla*) abundance: Biome, human and jaguar roles in population regulation. *Mamm Biol* 81:274–280
- Raïter KG, Possingham HP, Prober SM, Hobbs RJ (2014) Under the radar: mitigating enigmatic ecological impacts. *Trends Ecol Evol* 29:635–644
- Redford KHJB (1992) The empty forest. *Bioscience* 42:412–422
- Romero-Muñoz A et al (2019) Habitat loss and overhunting synergistically drive the extirpation of jaguars from the Gran Chaco. *Divers Distrib* 25:176–190
- Romero-Muñoz A et al (2020a) Increasing synergistic effects of habitat destruction and hunting on mammals over three decades in the Gran Chaco. *Ecography*
- Romero-Muñoz A, Morato RG, Tortato F, Kuemmerle T (2020) Beyond fangs: beef and soybean trade drive jaguar extinction. *Front Ecol Environ* 18:67–68
- Semper-Pascual A et al (2018) Mapping extinction debt highlights conservation opportunities for birds and mammals in the South American Chaco. *J Appl Ecol* 55:1218–1229
- Semper-Pascual A, Decarre J, Baumann M, Busso JM, Camino M, Gómez-Valencia B, Kuemmerle T (2019) Biodiversity loss in deforestation frontiers: Linking occupancy modelling and physiological stress indicators to understand local extinctions. *Biol Conserv* 236:281–288
- Sieber A, Uvarov NV, Baskin LM, Radeloff VC, Bateman BL, Pankov AB, Kuemmerle T (2015) Post-Soviet land-use change effects on large mammals' habitat in European Russia. *Biol Conserv* 191:567–576
- Smith IA, Hutyrá LR, Reinmann AB, Marrs JK, Thompson JR (2018) Piecing together the fragments: elucidating edge effects on forest carbon dynamics. *Front Ecol Environ* 16:213–222
- Sollmann R et al (2013) Note on the diet of the jaguar in central Brazil. *Eur J Wildl Res* 59:445–448
- Tabarelli M, Da Silva JMC, Gascon C (2004) Forest fragmentation, synergisms and the impoverishment of neotropical forests. *Biodivers Conserv* 13:1419–1425
- Tapia L, Regos A, Gil-Carrera A, Dominguez J (2018) Assessing the temporal transferability of raptor distribution models: Implications for conservation. *Bird Conserv Int* 28:375–389
- TNC, Fvs, FDSC, Wcs (2005) Evaluación Ecorregional del Gran Chaco Americano. Fundación Vida Silvestre Argentina, Buenos Aires
- Varela S, Rodríguez J, Lobo JM (2009) Is current climatic equilibrium a guarantee for the transferability of distribution model predictions? A case study of the spotted hyena. *J Biogeogr* 36:1645–1655
- Vogt P, Riitters KH, Estreguil C, Kozak J, Wade TG, Wickham JD (2007) Mapping spatial patterns with morphological image processing. *Landsc Ecol* 22:171–177
- Vynne C, Keim JL, Machado RB, Marinho-Filho J, Silveira L, Groom MJ, Wasser SK (2011) Resource selection and its implications for wide-ranging mammals of the Brazilian Cerrado. *PLoS ONE* 6:e28939
- Wearn OR, Rowcliffe JM, Carbone C, Bernard H, Ewers RM (2013) Assessing the status of wild felids in a highly-disturbed commercial forest reserve in Borneo and the implications for camera trap survey design. *PLoS ONE* 8:e77598
- Wittemyer G, Elsen P, Bean WT, Burton ACO, Brashares JS (2008) Accelerated human population growth at protected area edges. *Science* 321:123–126

**Publisher's Note** Springer Nature remains neutral with regard to jurisdictional claims in published maps and institutional affiliations.

## Affiliations

**Asunción Semper-Pascual**<sup>1</sup>  · **Julieta Decarre**<sup>2</sup> · **Matthias Baumann**<sup>1</sup> · **Micaela Camino**<sup>3</sup> · **Yamil Di Blanco**<sup>4</sup> · **Bibiana Gómez-Valencia**<sup>5,6</sup> · **Tobias Kuemmerle**<sup>1,7</sup>

✉ Asunción Semper-Pascual  
asuncion.semper.pascual@geo.hu-berlin.de

- <sup>1</sup> Geography Department, Humboldt-Universität zu Berlin, Unter den Linden 6, 10099 Berlin, Germany
- <sup>2</sup> Instituto de Recursos Biológicos (IRB-CIRN), Instituto Nacional de Tecnología Agropecuaria (INTA), De los Reseros y Las Cabañas S/N, HB1712WAA Buenos Aires, Argentina
- <sup>3</sup> Laboratorio de Biología de la Conservación, Centro de Ecología del Litoral (CECOAL), Consejo Nacional de Investigaciones Científicas y Técnicas (CONICET), Ruta Nacional N°5, Km 2.5, CP3400 Corrientes, Argentina
- <sup>4</sup> Instituto de Biología Subtropical (IBS), Universidad Nacional de Misiones (UNaM) – Consejo Nacional de Investigaciones Científicas y Técnicas (CONICET), Facultad de Ciencias Forestales-UNaM; Asociación Civil Centro de Investigaciones del Bosque Atlántico (CeIBA), Bertoni 85, N3370BFA Puerto Iguazú, Misiones, Argentina
- <sup>5</sup> Grupo de Estudios de Sistemas Ecológicos en Ambientes Agrícolas, Facultad de Ciencias Exactas y Naturales, Universidad de Buenos Aires, Intendente Güiraldes 2160, C1428EGA Buenos Aires, Argentina
- <sup>6</sup> Instituto de Investigaciones de Recursos Biológicos Alexander von Humboldt, Avenida Paseo Bolívar (Circunvalar) 16-20, Bogotá, DC, Colombia
- <sup>7</sup> Integrative Research Institute on Transformations of Human-Environment Systems (IRI THESys), Humboldt-Universität zu Berlin, Unter den Linden 6, 10099 Berlin, Germany