



Phylogeny and biogeography of the genus *Pelinoides* Cresson (Diptera-Ephydridae)

MERCEDES LIZARRALDE DE GROSSO¹ & CLAUDIA SZUMIK²

¹Instituto Superior de Entomología, Facultad de Ciencias Naturales e Instituto Miguel Lillo, Universidad Nacional de Tucumán and Consejo Nacional de Investigaciones Científicas y Técnicas. Miguel Lillo 205, Tucumán, Argentina. E-mail: ticky@csnat.unt.edu.ar

²Ibid. E-mail: cszumik@csnat.unt.edu.ar

Abstract

A phylogenetic analysis of the 21 species of genus *Pelinoides* using 44 discrete morphological characters is presented. From the previous proposed three groups, *pallipes*, *sulcatus* and *cyclocerus*, the first is recovered. The *sulcatus* group appears as paraphyletic in terms of *cyclocerus*. *Pelinoides* is present in the Neotropical and Andean Regions and in the Transitional South American Zone. Four areas of maximum endemicity were found. Eleven vicariant events are described and discussed, using the areas of endemisms and biogeographic provinces where *Pelinoides* occurs.

Key words: *Pelinoides*, Phylogeny, Biogeography, Andean and Neotropical Regions

Resumen

Se presenta un análisis filogenético de las 21 especies del género *Pelinoides*, usando 44 caracteres morfológicos discretos. Se recupera al grupo *pallipes* de una propuesta anterior que definía tres grupos: *pallipes*, *sulcatus* y *cyclocerus*. El grupo *sulcatus* resulta parafilético en términos de *cyclocerus*. *Pelinoides* está presente en las Regiones Biogeográficas Neotropical y Andina y en la Zona de Transición de América del Sur. Se determinan cuatro áreas de máximo valor de endemicidad. Se describen y discuten once eventos vicarantes usando las áreas de endemismo y las provincias biogeográficas donde está presente el género *Pelinoides*.

Palabras clave: *Pelinoides*, Filogenia, Biogeografía, Regiones Andina y Neotropical

Introduction

The shore-fly genus *Pelinoides* Cresson 1931 is placed in the subfamily Ilytheinae Cresson, tribe Hyadinini Phillips *et al.* (Mathis & Zatwarnicki, 1995). This group is appropriate for cladistic and biogeographic analysis because it is clearly a monophyletic group, with only 21 species that are distributed in very restricted areas — biogeographic provinces, ecoregions— of the Andean and Neotropical Regions and Transitional South American Zone (Morrone, 2004). Although the alpha taxonomy is fairly accurate (Cresson, 1934; Wirth, 1968; Lizarralde de Grosso, 1981, 1989; Mathis, 1977, 1985), relationships between the species are still unknown, and nothing has been published regarding the sequence of vicariant events in this genus. The only statement on the internal relationships in *Pelinoides* was given by Mathis (1985), who divided the genus in 3 species groups: the *pallipes* group, with two species (*P. pallipes* and *P. andinus*) distributed on both sides of the Andes in Perú, Ecuador and Colombia and, in Central America below 1000 m of altitude; the *cyclocerus* group, with a single

species, from the O' Higgins Province in Chile; and the *sulcatus* group with the 18 remaining species (*P. amblys*, *P. andinus*, *P. australis*, *P. chilensis*, *P. chiloensis*, *P. colerus*, *P. flavipalpus*, *P. flinti*, *P. fuscus*, *P. nigrihalteratus*, *P. obscurus*, *P. opacus*, *P. penai*, *P. phaeopleurus*, *P. pruinus*, *P. pullus*, *P. sulcatus*, *P. unctus*) spread from the Navarino Island through temperate zones in Argentina and Chile to the highest areas in Perú and Ecuador. This is the first attempt to analyze relationships among the 21 species of *Pelinoidea* according to the morphological characters classically used in the taxonomy of this group.

Objectives of this work are to propose the first cladistic analysis for the 21 species of *Pelinoidea*, to test the validity of species groups previously proposed, and to identify possible vicariant events, that requires not only the phylogenetic hypothesis of the group in question but also the units of study (the areas) identified. Geographic units of study were analyzed using formal and quantitative methods.

Material and methods

Cladistic Analysis

Cladistic analysis was carried out using parsimony criteria under equal weights, as implemented in the program TNT ver. 1.0 (Goloboff *et al.*, 2005; see reviews of the program in Giribet, 2005, Hovenkamp, 2004, Meier & Ali, 2005). The tree search algorithms used here were forty replications of a random addition sequence Wagner tree, each followed by tree bisection reconnection (TBR) branch-swapping. The group support was measured using relative Bremer Support (Goloboff & Farris, 2001) and jackknifing (symmetric re-sampling of Goloboff *et al.*, 2003).

Characters used in this study (Appendix 1) were observed in types and additional material from the Instituto-Fundación Miguel Lillo, and/or taken from the literature (Cresson 1931, 1934; Hendel 1930, Lizarralde de Grosso, 1981; Mathis, 1977, 1985; Zatwarnicki, 1992).

All characters are discrete. Stripe pattern of mesonotum, which has eight conditions (Figs.1–8), was coded in two ways: (1) as a lineal additive character with eight states, and (2) the trait was divided into six characters (see Appendix 1 for a full description). Results of both codification types are compared and discussed.

Nostima elegantula Hendel 1930 was chosen as the outgroup, and all species of *Pelinoidea* were included in the study (see Appendix 2).

Biogeographic analysis

To identify areas we used the formal method of areas of endemism (Szumik *et al.*, 2002; Szumik & Goloboff, 2004); implemented in the programs NDM and VNDM ver. 2.5 (Goloboff, 2005). A data matrix for this analysis consisted of a cell grid of 2° where presence/absence of each species of *Pelinoidea* was recorded for each cell of the grid. The method evaluates, with an index, areas (group of cells) according to how well the distribution of a species to each area is adjusted. Then, those areas with maximum values are retained. One hundred records from the 21 species were analyzed (binary data matrix in Appendix 3). When the species were not part of any area of endemism, distribution was replaced by the biogeographic provinces equivalent (following Morrone, 2001; 2004). The resulting areas were scored as a unique unordered character and mapped using a down pass Fitch optimization (following Ronquist, 1994). Those nodes, that separated two or more disjunct areas, are then considered as evidence of a vicariant event.

Results and discussion

Phylogeny

Optimal trees from both types of codification of mesonotum stripes have some resolution in common (see

consensus Fig. 9): the monophyly of the *pallipes* group and the paraphyly of the *sulcatus* group. Almost all the synapomorphies that define the *Pelinoidea* non “*pallipes*” are not homoplastic (Figs. 10 and 11), namely, the absence of dorsally branching rays onto the arista (character 5), the dorso-apical angle of the first flagellomere angulated (character 6) and blackish brown femora and tibia (character 31). There is also some agreement on the apical section of the cladograms (Fig. 9): (1), the group of *P. pullus* and *P. chilensis* being supported by having a scutum with blackish stripes (character 19, Figs. 10 and 11) and the abdominal tergum less microtomentose than the mesonotum (character 34, Figs. 10 and 11), and (2) the species *P. cyclocerus*, *P. sulcatus*, *P. amblys*, *P. phaeonotus*, *P. chiloensis*, *P. nigrihalteratus* and *P. australis* by sharing the sparsely microtomentose mesonotum (character 16) and the abdominal tergum more microtomentose than mesonotum (character 34, Figs. 10 and 11).

Four optimal trees (with 155 steps, CI: 50, RI: 56) are obtained when the stripes of the mesonotum are analyzed as a unique and additive character, which appears as a synapomorphy of several groups (see consensus Fig. 10). However, it is not very concordant (15 extra steps) and has some parallelisms (e.g. the state 0 present in *P. pullus* and the group of *P. amblys* and *P. phaeonotus*, or the state 1 in *P. andinus* and *P. obscurus*). Six optimal trees (149 steps longer, CI: 52, RI: 57) with the alternative codification of the mesonotum stripes (characters 39 to 44 in Appendix 1) are found. Characters 41 and 42 are the only informative ones. The partial stripes (character 41) appear perfectly adjusted to the trees and supporting the group of *P. unctus* and *P. pruinus*. The absence of stripes on the dorsal tracks (character 42) defines the sister group of *P. flavipalpus* (Fig. 11) but the presence of this condition reappears independently three times in *P. pruinus*, *P. phaeopleurus*, and *P. nigrihalteratus*.

There are many optimal alternatives for the position of the species *P. phaeopleurus*, *P. colerus*, *P. flinti*, *P. fuscus* and *P. penai* in the trees in both analyses, but this group is well supported, according to the Bremer support in the alternative codification (Fig. 12). There are a few nodes that have a median support like the *pallipes* group (Fig. 12) and some other nodes in the apical section of the cladogram with two supports (Figs. 12 and 13). Then some relationships remain unresolved (position of *P. phaeopleurus*, *P. colerus*, *P. flinti*, *P. fuscus* and *P. penai* and position of *P. flavipalpus*, *P. opacus*, *P. unctus*, *P. pruinus*). Species groups proposed by Mathis (1985) are recovered in part: in our study, the *pallipes* group is recovered, and *sulcatus* group appears as paraphyletic in terms of *cyclocerus*.

Hence, we propose two species groups, *pallipes*, like Mathis 1985, and *sulcatus*, for all other species (Fig. 9–13):

a) *pallipes* group: *P. pallipes* and *P. andinus*. Distribution: Panamá, Honduras, Guatemala, Colombia, Ecuador and Perú.

b) *sulcatus* group: the other 19 species. Distribution: Ecuador, Perú, Argentina, Uruguay, Chile to Navarino Island.

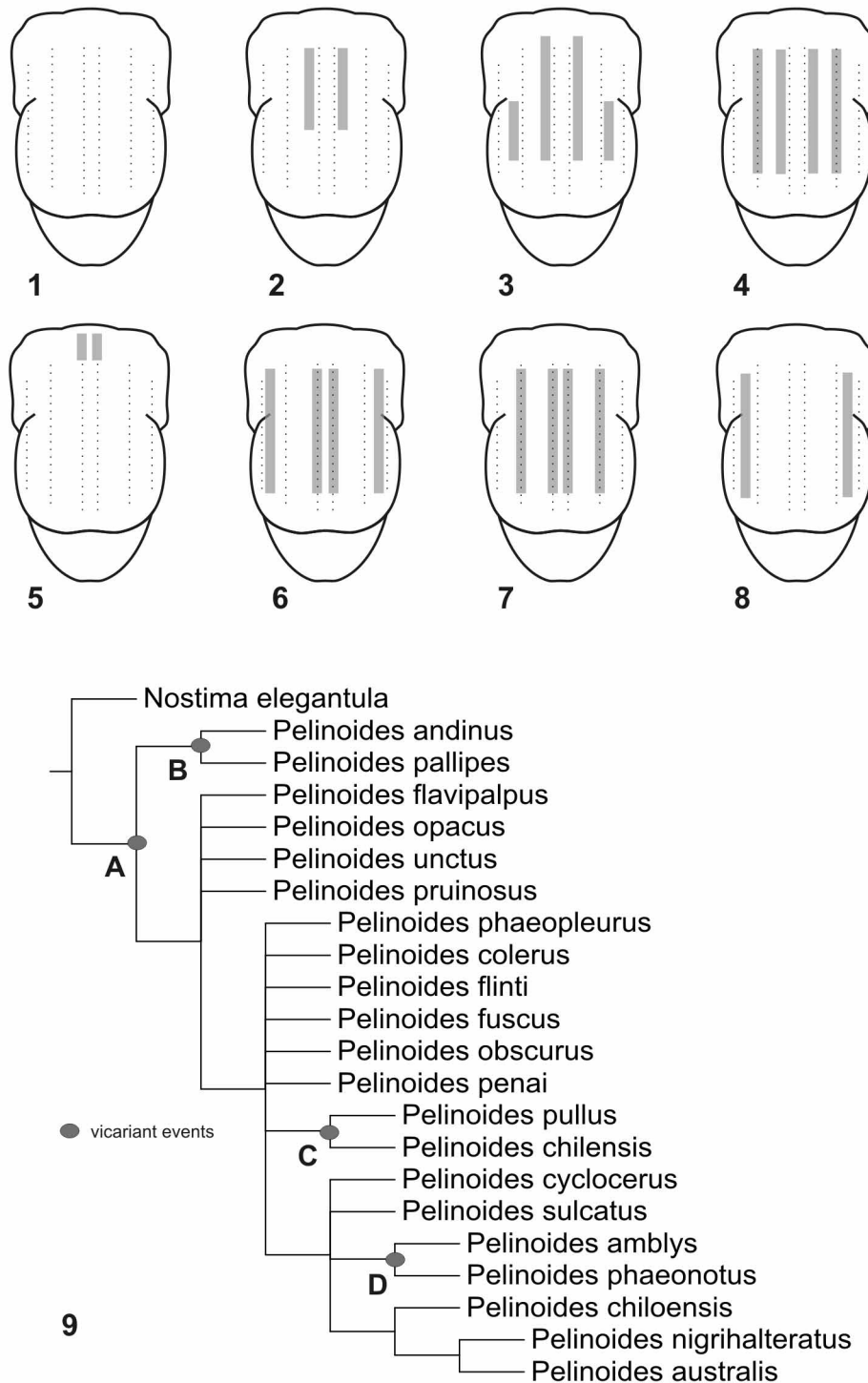
Biogeography

Pelinoidea is distributed from Mesoamerica to the extreme south of South America. The *pallipes* group is distributed from Guatemala to Perú, and the *sulcatus* group from Ecuador to the south of Chile. The groups overlap only in Ecuador and Perú.

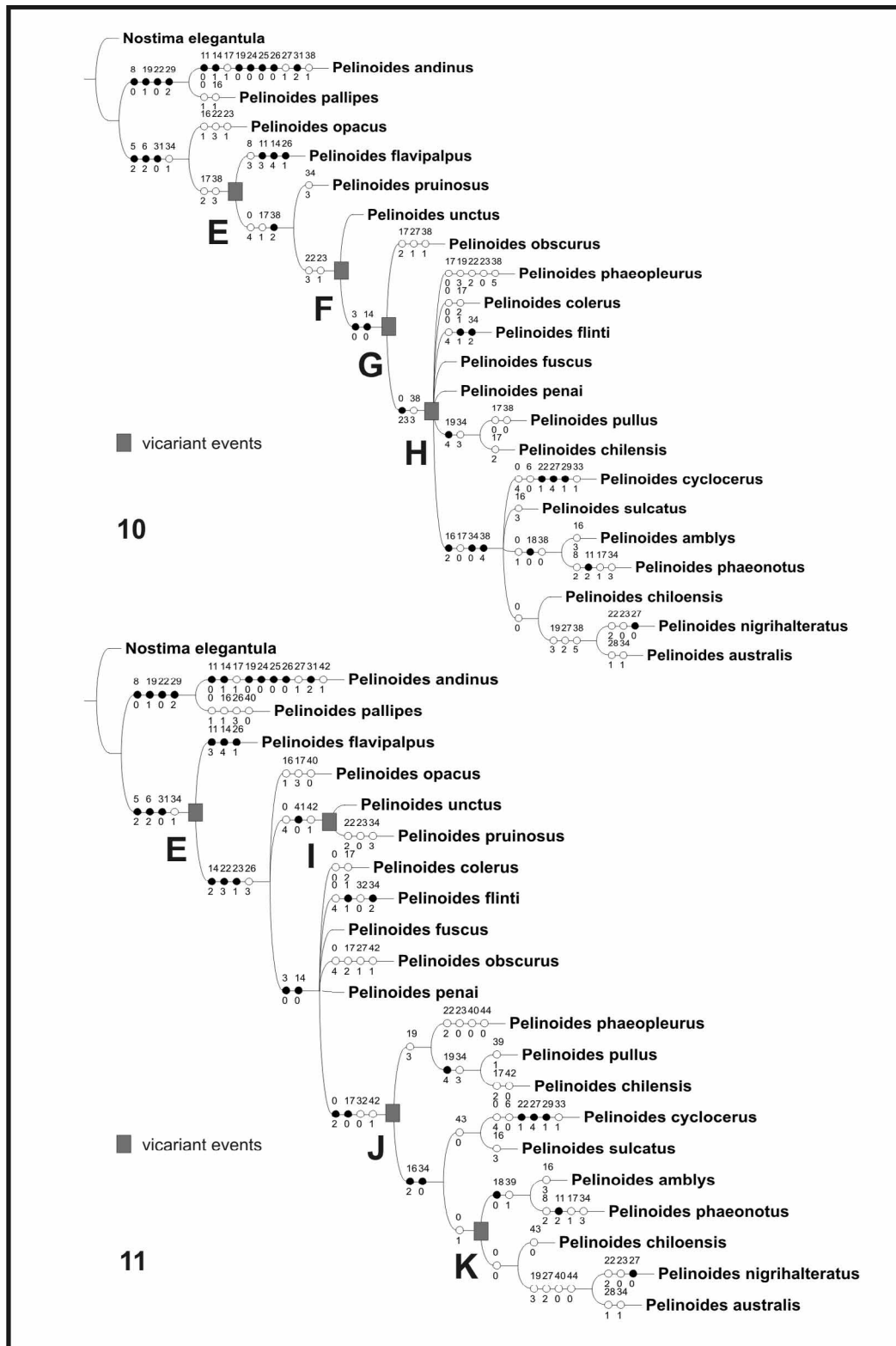
Eight species are found in a single locality: *P. cyclocerus* (Rio Claro, O'Higgins Province, Chile), *P. pullus* (Abra Pampa, Jujuy, Argentina), *P. amblys* (Parral Linares, Chile), *P. chiloensis* (Chepu, Chiloé, Chile), *P. phaeonotus* (Río Orosmayo, Jujuy Province, Argentina), *P. opacus* (Tucumán, Argentina), *P. pruinus* (Escoipe, Salta Province, Argentina) and one in a very restricted area: *P. nigrihalteratus* (Osorno Province, Chile) (all of them of *sulcatus* group).

Four areas with maximum values of endemism were found with NDM (Figs. 14). Area (A) is equivalent to the combined biogeographic provinces Puna / Prepuna and is defined by five species: *P. fuscus*, *P. opacus*, *P. phaeonotus*, *P. pruinus* and *P. pullus*. Area (B) is the combination of the provinces of Coquimbo / Maule

and is defined by three species *P. chilensis*, *P. flavipalpus* and *P. penai*. Area (C) is the combination of Maule / Valdivian Forest, where two species gave the endemism score: *P. penai* and *P. phaeopleurus*. Area (D) is the Valdivian Forest defined by three species: *P. chiloensis*, *P. cyclocerus* and *P. nigrihalteratus*. We replaced the distributions of the twelve species of *Pelinoides* that do not give any endemism score by the biogeographic provinces they occupy (Appendix 4). An unordered character of 14 states representing those provinces was mapped onto the ten optimal trees in the morphological analysis.

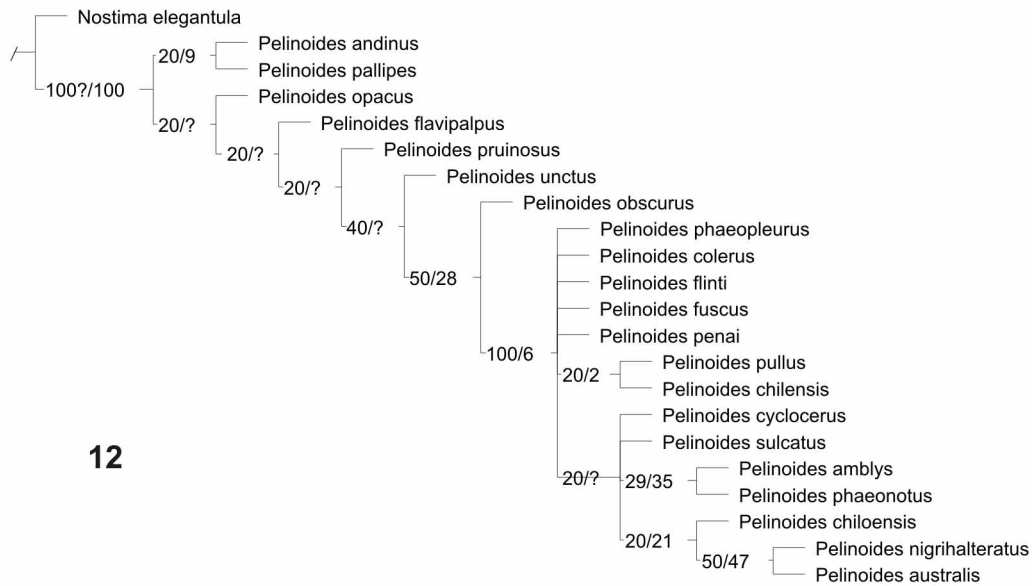


FIGURES 1-9. 1-8, Conditions of stripes of mesonotum. 9, Consensus of all trees obtained in both analyses.

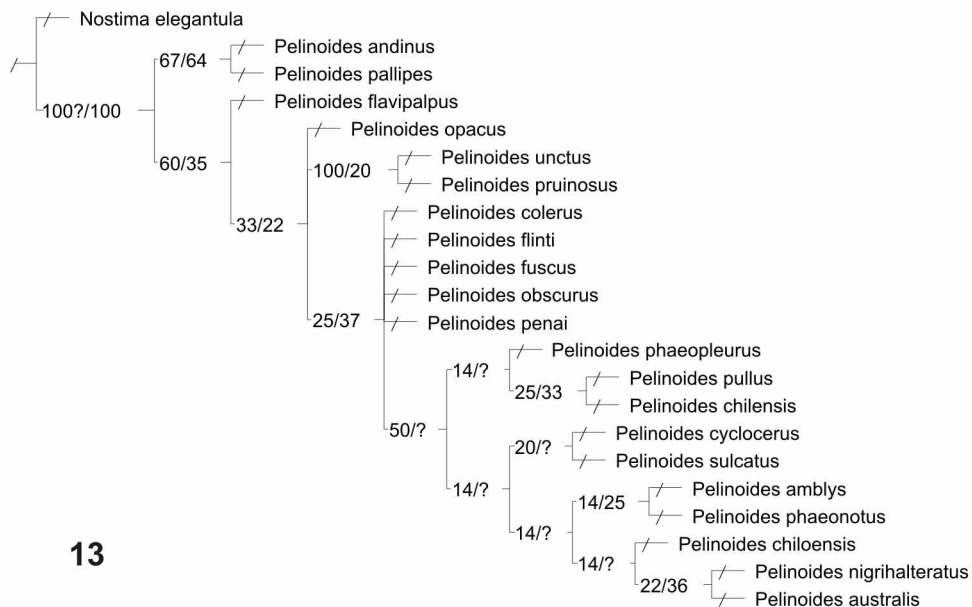


FIGURES 10–11. **10**, Consensus with the synapomorphies common to the four optimal trees. (mesonotum stripes' codification I). **11**, Consensus with the synapomorphies common to the six optimal trees. (mesonotum stripes' codification II).

Vicariant events common to the 10 cladograms (Fig.9, 15–25) are: A (Fig.15) (Peruvian Puna + Napo + Western Ecuador + Western Panamanian Isthmus + Chiapas) and (Argentinean Puna + Prepuna + Atacama + Coquimbo + Santiago + Maule); B (Fig.16) (Peruvian Puna + Napo) and (Western Ecuador + Western Pana



12



13

FIGURES 12–13. 12, Relative Bremer supports (from 5000 trees 6 steps longer) and Symmetric Resampling (P=33) for codification I. 13, Relative Bremer supports (from 5000 trees 6 steps longer) and Symmetric Resampling (P=33) for codification I.

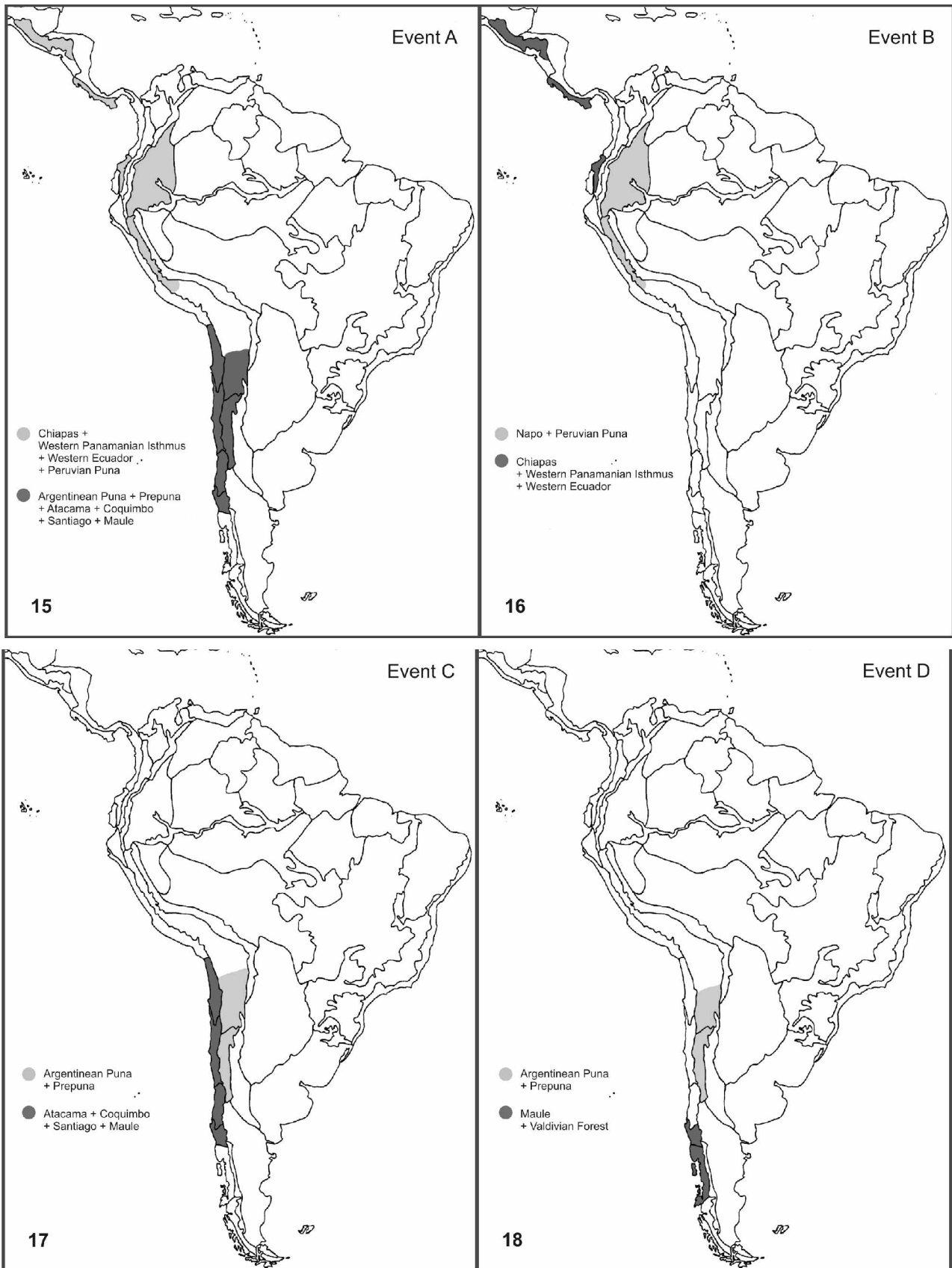
manian Isthmus + Chiapas); C (Fig.17) (Argentinean Puna + Prepuna) and (Atacama + Coquimbo + Santiago + Maule); D (Fig.18) (Argentinean Puna + Prepuna) and (Maule + Valdivian Forest). The following vicariant event present in both groups of cladograms, even though the relationships among the species are not the same. Such an event (Figs.10–11, 15–25) is represented by E (Fig.19) (similar to C but present in the basal section of the cladograms) between (Atacama + Coquimbo + Santiago + Maule) and (Puna + Prepuna). Other events are present only in one cladogram group like (Figs.10-11): F (Fig.20) (Monte + Pampa) and (Norandean Paramo + Puna + Prepuna + Magellanic Forest); G (Fig.21) (Norandean Paramo + Peruvian Puna) and (Argentinean Puna + Prepuna + Magellanic Forest); H (Fig. 22) (Argentinean Puna + Prepuna) and (Magellanic Forest); I

(Fig.23), which is similar to F, (Monte + Pampa) and (Puna + Prepuna); J (Fig.24) (Puna + Prepuna + Atacama+ Coquimbo + Santiago + Maule) and (Valdivian Forest); K (Fig.25) (Puna + Prepuna + Maule) and (Valdivian Forest).

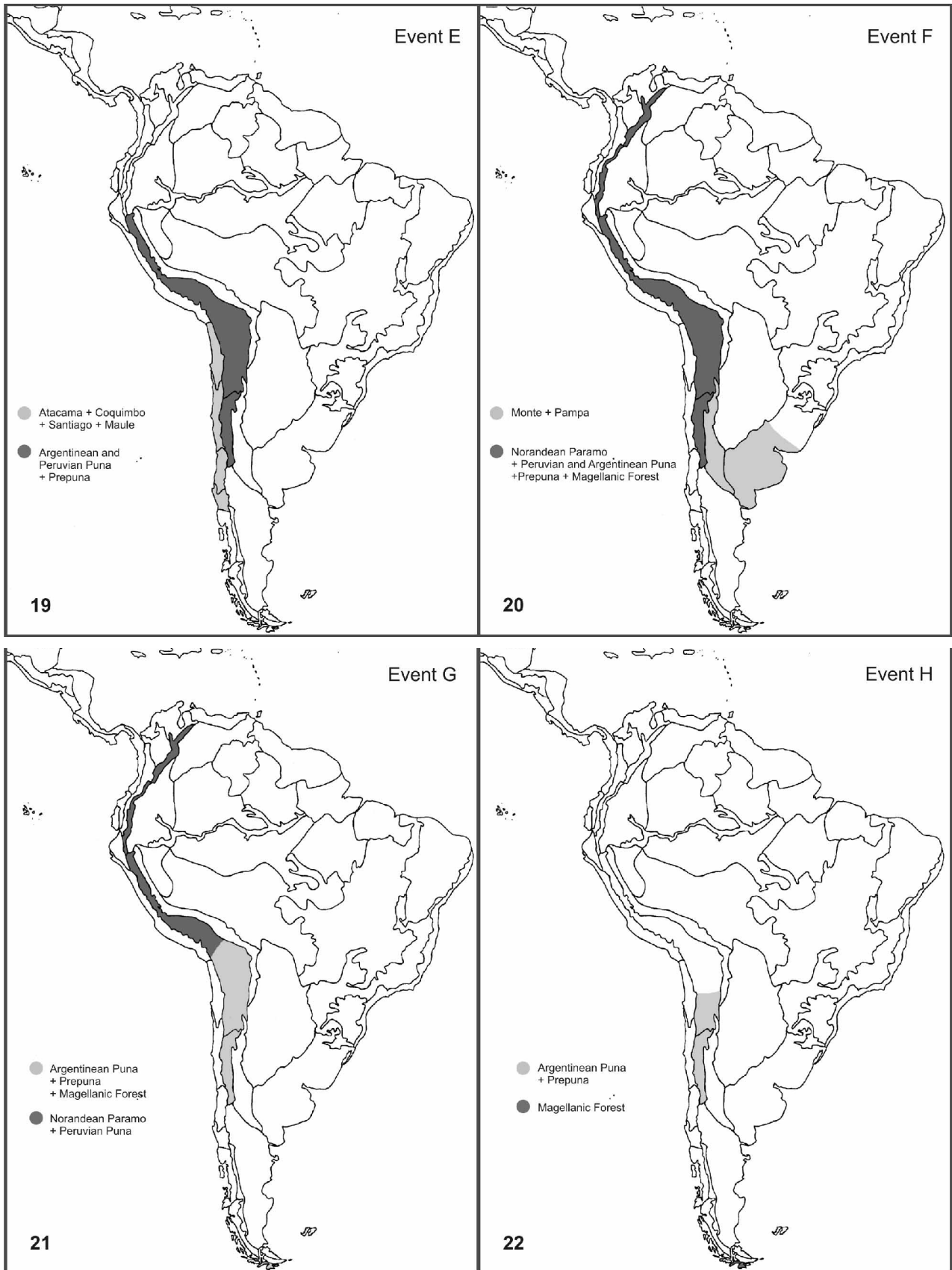


14

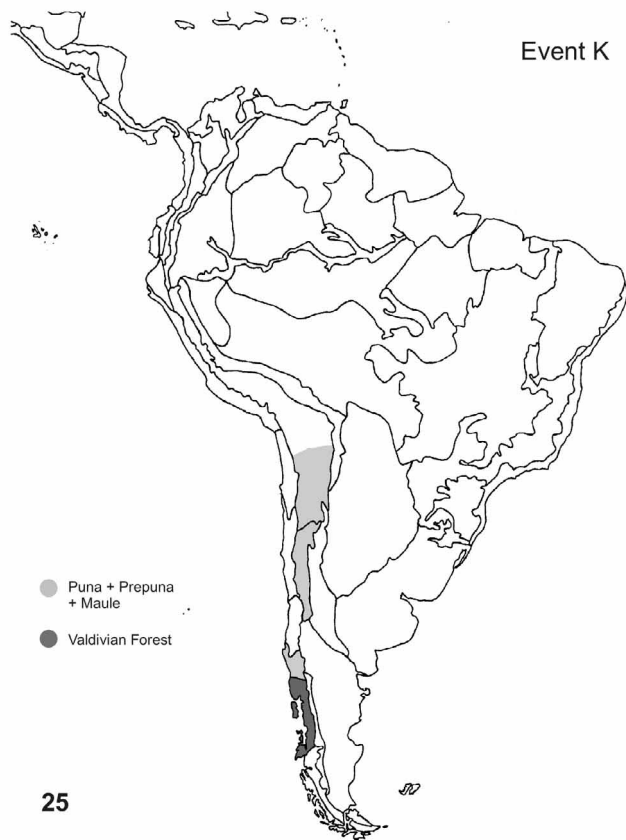
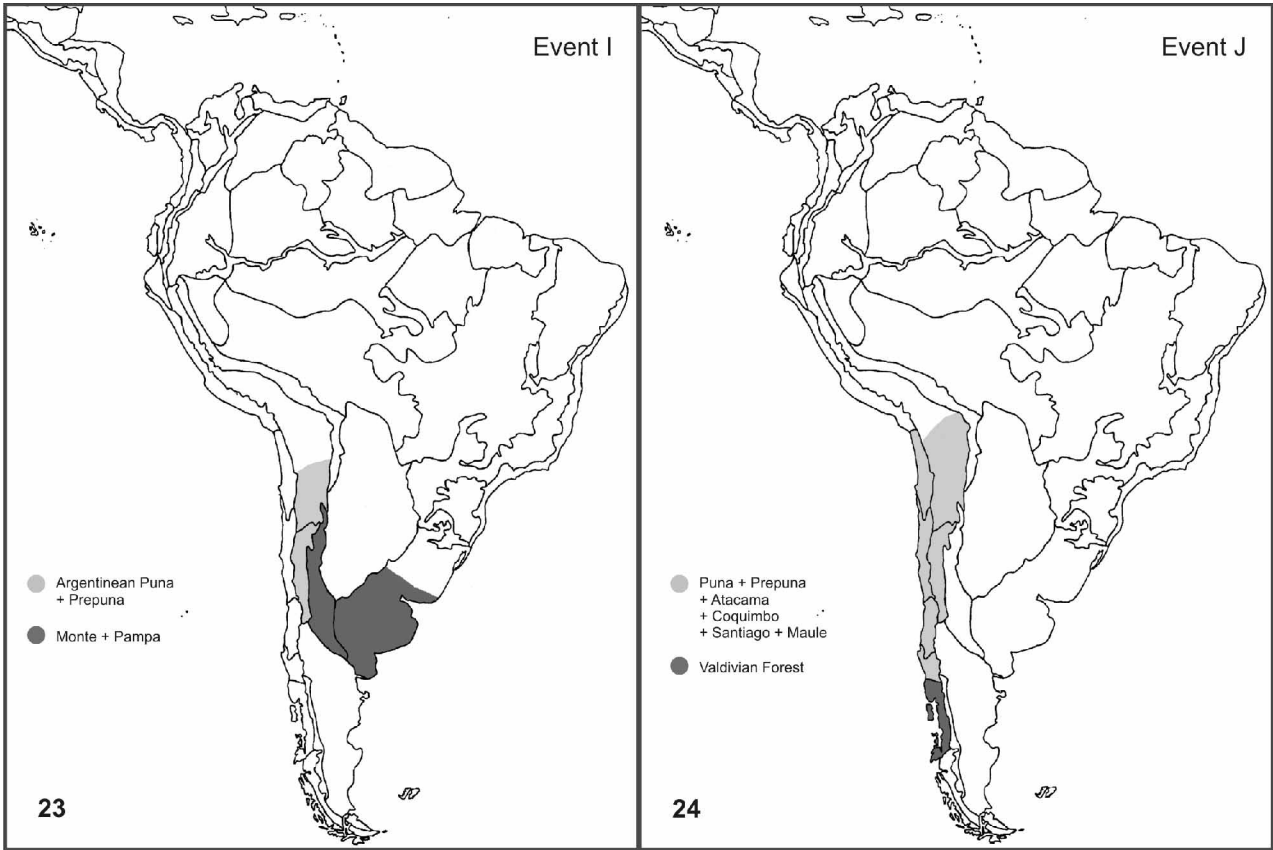
FIGURE 14. Areas of endemism obtained with NDM/VNDM: (A): Puna + Prepuna; (B): Coquimbo / Maule; (C): Maule + Valdivian Forest; (D): Valdivian Forest.



FIGURES 15–18. Vicariant events (A–D).



FIGURES 19–22. Vicariant events (E–H).



FIGURES 23–25. Vicariant events (I–K).

According to Morrone's Biogeographic Regions (2004) *Pelinoidea* is present in the Neotropical and Andean Regions, and also in the Transitional South American Zone. In this study we describe four areas of endemism: one corresponding to Transitional South American Zone, and three to the Andean Region. The eleven vicariant events described here involved only the Transitional Zone (one event); the Transitional Zone and the Andean Region (6 events); the Transitional Zone and the Neotropical Region (3 events); and the Transitional Zone, and the Neotropical and the Andean regions (one event). Morrone (2004) commented on the relevance of the biotic components that are present in transitional zones. That is the case in event F (Fig.20) that involved almost all the South American Transitional Zone plus the biogeographic province of Pampa (in part) of the Neotropic Region.

Areas of endemism are restricted to the Transitional Zone (Argentinean Puna and Prepuna) and the Andean Region (Coquimbo, Maule and Valdivian Forest), except for the province of Santiago that is between them. (Fig. 27).

Our results are mainly coincident with other works using arthropods (Morrone 1994; Morrone et al, 1997; Roig Juárez & Coscarón 2001; Roig Juárez & Flores 2001; Roig Juárez et al 2003; Marino et al 2001); some disagreement between them can probably be ascribed to different methods and taxonomy groups treated in each research project.

Acknowledgments

This work was supported by grants PICT N° 12605 FONCYT-BID, PIP N° 02567 CONICET, and Consejo de Investigaciones de la Universidad Nacional de Tucumán, Argentina. We wish to thank Juan José Morrone for permission to use his maps and Alberto Bernardino Rojas for georeferences. We also thank Pablo Goloboff, Roberto Menni, Luisa Montivero and reviewers, Wayne Mathis and Thadeus Zatwarnicki, for useful comments and criticisms and Andrés Grosso for the illustrations.

References

- Cresson, E. T. Jr. (1931) Ephydriidae. In *Diptera of Patagonia and South Chile*. 6 (2). British Museum (Natural History), London. 85–116.
- Cresson, E. T. Jr. (1934) Descriptions of New Genera and Species of the Dipterous family Ephydriidae. XI. *Transaction of American Entomological Society*, 60, 199–222.
- Giribet, G. (2005) Book Reviews: TNT: Tree analysis using New Technology. *Systematic Biology*, 54, 176–178.
- Goloboff, P. (1993) Estimating character weights during tree search. *Cladistics*, 9, 83–91.
- Goloboff, P. (2005) NDM/VNDM programs for identification of areas of endemism. Available from <http://www.zmuc.dk/public/phylogeny/endemism>
- Goloboff, P. & Farris, J. (2001) Methods for quick consensus estimation. *Cladistics*, 17: S26S34.
- Goloboff, P., Farris, J., Källersjö, M., Oxelmann, B., Ramirez, M. & Szumik, C. (2003) Improvements to resampling measures of group support. *Cladistics*, 19, 324–332.
- Goloboff, P., Farris, J. & Nixon, K. (2005) TNT: Tree analysis using New Technology. ver. 1.0. Available from <http://www.zmuc.dk/public/phylogeny>
- Hendel, F. (1930) Die Ausbeute der deutschen Chaco-Expedition 1925–1926. Diptera. XIX. Ephydriidae. *Konowia*, 9, (2), 127–155.
- Hovenkamp, P. (2004) Review of TNT - Tree Analysis Using New Technology, Version 1.0. *Cladistics*, 20, 378–383.
- Lizarralde de Grosso, M. (1981) El género *Pelinoidea* Cresson en la República Argentina (Diptera-Ephydriidae). *Neotropica*, 27, (77), 93–95.
- Lizarralde de Grosso, M. (1989) Ephydriidae de la República Argentina. *Serie Monográfica y Didáctica*, (3), 93 pp. Facultad de Ciencias. Naturales e Instituto Miguel Lillo. Ed. Universidad Nacional de Tucumán.
- Lizarralde de Grosso, M. (1998) Ephydriidae. In S. Coscarón & J. J. Morrone (Ed), *Biodiversidad de Artrópodos Argentinos*. La Plata, Argentina, pp 365–373.

- Marino, P. I., Spinelli, G. R. & Posadas, P. (2001) Distributional Patterns of species of Ceratopogonidae (Diptera) in Southern South America. *Biogeographica*, 77 (3), 113–122.
- Mathis, W. N. (1977) Key of the Neotropical Genera of Parydrinae with a revision of the genus *Eleleides* Cresson (Diptera: Ephydriidae) *Proceeding of the Biological Society of Washington*, 90, (3), 553–565.
- Mathis, W. N. (1985) Studies of Parydrinae (Diptera: Ephydriidae), II: A Revision of the Shore Fly Genus *Pelinoides* Cresson. *Smithsonian Contributions to Zoology*, (410), 1–46.
- Mathis, W. N. & Zatwarnicki, T. (1995) World Catalog of shore flies (Diptera: Ephydriidae). *Memoires on Entomology, International*. Edit. Gupta, V.K., Associated Publishers, Gainesville, FL, USA, 423 pp.
- Meier, R. & Ali, F. B. (2005) The newest kid on the parsimony block: TNT (Tree analysis using new technology). *Systematic Entomology*, 30, 179–182.
- Morrone, J. J. (1994). Distributional patterns of species of Rhytirrhini (Coleoptera: Curculionidae) and the historical relationships of the Andean provinces. *Global Ecology and Biogeography Letters*. 4, 188–194.
- Morrone, J. J. (2001) Biogeografía de América Latina y el Caribe. *M & T. Manuales y Tesis, Sociedad Entomológica Aragonesa, Zaragoza*, 3, 148 pp.
- Morrone, J. J. (2004) Panbiogeografía, componentes bióticos y zonas de transición. *Revista Brasileira de Entomologia*, 48, (2), 149–162.
- Morrone, J.J., Katinas, L. & Crisci, J. V. 1997. A Cladistic Biogeography Analysis of Central Chile. *J. Comp. Biol.* 2 (1), 25–42.
- Roig Juárez, S. & Coscarón, S. (2001). Biogeographical History of the Neotropical and Neantartic Simuliidae (Diptera). *Rev. Mus. Argentino Cienc. Nat.*, n.s. 3 (2), 119–134.
- Roig Juárez, S. & Flores, G. E. (2001) Historia Biogeográfica de las Áreas Áridas de América del Sur Austral. In J. Llorente Bosquets & J. J. Morrone (Eds) *Introducción a la Biogeografía en Latinoamérica: Teorías, conceptos, métodos y aplicaciones*. México, Las Prensas de Ciencias, UNAM pp 257–266.
- Roig Juárez, S., Flores, G. E & Mattoni, C. (2003) Consideraciones Biogeográficas de la Precordillera (Argentina), con Base en Artrópodos Epógeos. In J. J. Morrone & J. L. Llorente Busquets (Ed), *Una perspectiva Latinoamericana de la Biogeografía*. México, Las Prensas de Ciencias, UNAM pp. 275–288.
- Ronquist, F. (1994) Ancestral areas and parsimony. *Systematic Biology*, 43, 267–274.
- Szumik, C., Cuezco, F., Goloboff, P. & Chalup, A. (2002) An optimality criterion to determine areas of endemisms. *Systematic Biology*, 51, 806–816.
- Szumik, C. & Goloboff, P. (2004) Areas of Endemism: An Improved Optimality Criterion. *Systematic Biology*, 53, 968–977.
- Wirth, W.W. (1968) Ephydriidae. In N. Papavero (Ed), *A Catalogue of the Diptera of the Americas South of the United States*. Departamento de Zoologia, Sao Paulo, Brasil, pp. 1–43.
- Zatwarnicki, T. (1992) A New Classification of Ephydriidae Based on Phylogenetic Reconstructions (Diptera: Cyclorhapha). *Genus*, 3, (2), 65–119.

Appendix 1. List of characters used in the cladistic analysis. Characters 1, 2, 4, 7, 9, 10, 12, 13, 15, 20, 21, 24, 25, 30, 35, 36 and 37 are uninformative; they are included here to show on the cladograms the list of autapomorphies of *Pelinoidea*. Characters are codified as additive.

Head:

0. *Vestiture of Mesofrons*. (0) very sparsely microtomentose; (1) mostly sparsely microtomentose; (2) densely sparsely microtomentose; (3) moderately densely microtomentose; (4) densely microtomentose.
1. *Mesofrons with a large bare area*. (0) no; (1) yes.
2. *Fronto-orbital bristles conspicuous*. (0) no; (1) yes.
3. *Antenna coloration*. (0) black to dark brown; (1) same to 0 but first flagellomere yellowish to orange; (2) orange yellowish.
4. *Arista bearing small hairs*. (0) yes; (1) no, with long hairs.
5. *Arista with dorsally branching rays*. (0) long; (1) short; (2) absent.
6. *Dorso-apical angle of first flagellomere*. (0) broadly rounded; (1) angulated.
7. *Face beyond anterior margin*. (0) flat; (1) convex.
8. *Midface coloration*. (0) bluish grey; (1) white silvery; (2) shiny white; (3) brownish white (4) yellowish.
9. *Epistomal margin of face broadly emarginate medially*. (0) yes; (1) no.
10. *Clypeus*. (0) conspicuous; (1) inconspicuous.
11. *Gena coloration*. (0) yellowish white; (1) silvery white; (2) white to grey (3) brownish white.
12. *Eyes prominent*. (0) yes; (1) no.
13. *Eyes*. (0) glabrous; (1) pilose.
14. *Palpus coloration*. (0) black brownish; (1) yellowish brown; (2) yellow to orange; (3) yellow.

Thorax:

15. *General coloration*. (0) brown to nearly black; (1) pale grey yellowish.
16. *Vestiture of the mesonotum*. (0) very densely microtomentose; (1) moderately densely microtomentose; (2) sparsely microtomentose; (3) very sparsely microtomentose to bare.
17. *Mesonotum coloration*. (0) brown to mostly black; (1) mostly brown (2) mostly brown to grayish brown; (3) olivaceous to brown; (4) grey to golden brown.

Stripes of scutum:

18. *Stripes of the scutum*. (0) absent; (1) present.
19. *Stripes of scutum coloration*. (0) golden brown; (1) dark brown; (2) greyish; (3) brownish; (4) blackish.
20. *Median stripe*. (0) present; (1) absent.
21. *Intraalar stripes*. (0) present; (1) absent.

Scutellum:

22. *Basolateral margins of scutellum*. (0) no microtomentose; (1) slightly velvety microtomentose; (2) densely microtomentose.
23. *Posteroblique angle of scutellum appearing velvety black*. (0) no; (1) yes.
24. *Presutural bristles*. (0) conspicuous; (1) inconspicuous.
25. *Acrostichal setulae*. (0) conspicuous; (1) small, inconspicuous.
26. *Dorsocentrals bristles*. (0) five; (1) three or four; (2) two; (3) one.

Halters and Wings:

27. *Knob of halter*. (0) blackish brown; (1) brownish; (2) yellowish slightly brownish; (3) whitish yellowish.
28. *Stem of halter*. (0) yellowish; (1) yellowish brown.
29. *Wing*. (0) hyaline; (1) with clouded areas; (2) very lightly infumose.
30. *Wing vein 1*. (0) rather swollen and black; (1) no swollen and black.

Legs:

31. *Femora and tibia*. (0) blackish brown; (1) yellowish brown; (2) slightly yellow.

Abdomen:

32. *Tergum coloration*. (0) mostly blackish; (1) mostly brown.
33. *Tergum microtomentose*. (0) yes; (1) partially shiny.
34. *Tergum microtomentose respect to mesonotum*. (0) more; (1) equal; (2) slightly less; (3) less.

Male genitalia:

35. *Epandrium*. (0) distally tapered; (1) distally round.
36. *Gonite*. (0) with reduced setulae; (1) setose.
37. *Long setae inserted at connection of gonite with hypandrium*. (0) present; (1) absent.

Codifications of the mesonotum stripes pattern (Fig. 1–8). Of course when a codification was analysed with the program TNT the other was deactivated.

Codification I:

38. (Additive). (0) without stripes; (1) with stripes laterad to acrostichal tracks (2) same as 1 but with partial stripes laterad to dorsocentral tracks; (3) same as 1 but with stripes laterad to dorsocentral tracks; (4) stripes anterior to either side of acrostichal tracks; (5) stripes through acrostichal tracks and on lateral margin; (6) stripes through acrostichal and dorsocentral tracks; (7) stripes between dorsocentral and intra-alar tracks.

Codification II:

39. *Stripes laterad to acrostichal tracks*: (0) absent; (1) present.
40. *Stripes through acrostichal tracks*: (0) present; (1) absent.
41. *Partial stripes laterad to dorsocentral tracks*: (0) present; (1) absent.
42. *Stripes laterad to dorsocentral tracks*: (0) present; (0) absent.
43. *Stripes anterior on either side of acrostichal tracks*: (0) present; (1) absent.
44. *Stripes on lateral margin*: (0) present; (1) absent.

Appendix 2. Morphological data matrix.

	1	2	3	4
	012345678901234567890123456789012345678901234			
<i>Nostima elegantula</i>	401210014111113104130020112210010231107011011			
<i>Pelinoides andinus</i>	300101100000001001101100000102121030011011111			
<i>Pelinoides pallipes</i>	100101100001003014111100113302111030016001011			
<i>Pelinoides cyclocerus</i>	40000200100100002?1211111134011001?0014011101			
<i>Pelinoides sulcatus</i>	200002201001000030121131113300100000014011101			
<i>Pelinoides pullus</i>	200002201001000000141131113300100030010111111			
<i>Pelinoides amblys</i>	100002201001000030021131113300100000010111111			
<i>Pelinoides chiloensis</i>	000002201001000020121131113300100000014011101			
<i>Pelinoides nigrihalteratus</i>	000002201001000020131120113300100000015001110			
<i>Pelinoides phaeopleurus</i>	200002201001000000131120113300100010015001110			
<i>Pelinoides australis</i>	000002201001000020131131113210100010015001110			
<i>Pelinoides chilensis</i>	200002201001000002141131113300100030013011011			
<i>Pelinoides colerus</i>	000002201001000002121131113300101010013011011			
<i>Pelinoides flavipalpus</i>	300102203003004002121120111300101010013011011			
<i>Pelinoides flinti</i>	410002201001000001121131113300100020013011011			
<i>Pelinoides phaeonotus</i>	100002202002000021021131113300100030010111111			
<i>Pelinoides fuscus</i>	300002201001000001121131113300101010013011011			
<i>Pelinoides obscurus</i>	40000220100100000212113?113100101010011011111			
<i>Pelinoides opacus</i>	300102201001002013121131113300101010016001011			
<i>Pelinoides penai</i>	300002201001000001121131113300101010013011011			
<i>Pelinoides unctus</i>	400102201001002001121131113300101010012010111			
<i>Pelinoides pruinosus</i>	400102201001002001121120113300101030012010111			

Appendix 3. Binary data matrix of presence and absence of species on a cell grid of 26 x 20 (2°x3°). The rows are the grid cells, the numbers indicate the position of the cell in the grid, e.g. cell 0–1 is located in the row 0 and column 1. The columns are the species of *Pelinoides*: 0, *P. amblyus*; 1, *P. andinus*; 2, *P. australis*; 3, *P. chilensis*; 4, *P. chiloensis*; 5, *P. colerus*; 6, *P. cyclocerus*; 7, *P. flavipalpus*; 8, *P. flinti*; 9, *P. fuscus*; 10, *P. nigrihalteratus*; 11, *P. obscurus*; 12, *P. opacus*; 13, *P. pallipes*; 14, *P. penai*; 15, *P. phaenotus*; 16, *P. phaeopleurus*; 17, *P. pruinus*; 18, *P. pullus*; 19, *P. sulcatus*; 20, *P. unctus*.

	012345678901234567890	012345678901234567890	012345678901234567890
0-0	0000000000000100000000	10-10	0010000000001000000000
0-1	0000000000000100000000	10-11	0020000000001000000000
0-2	0000000000000100000000	10-12	0000000000020000000000
0-3	0000000000000200000000	11-10	0000000000010000000000
1-0	0000000000000100000000	11-11	0000000000010000000000
1-1	0000000000000100000000	11-12	0000000000020000000000
1-2	0000000000000200000000	12-12	00000000000000200210
1-3	0000000000000200000000	12-13	00000000000000200210
2-5	0000000000000100000000	12-14	00000000000000000220
2-6	0000000000000100000000	13-10	00000000000000000020
2-7	0000000000000200000000	13-11	00000000000000000010
3-5	0000000000000200000000	13-12	000001000000000102110
3-6	0000000000000200000000	13-13	000001000000000102110
3-7	0000000000000200000000	13-14	000002000000000002220
4-6	0200000000000000000000	14-9	0002000200000000000000
4-7	0200000000000000000000	14-10	0001000200000000000020
4-8	0200000000000000000000	14-11	0001000200000000000010
5-5	0000000000000100000000	14-12	0002010001000000001010
5-6	0100000000001010000000	14-13	0000010001001000001010
5-7	0100000000001000000000	14-14	000002000100100002020
5-8	0200000000000000000000	15-9	0022000200000000000000
6-5	0000000000000100000000	15-10	0011020100000000000020
6-6	0100000000001010000000	15-11	0021020100000000000020
6-7	0100000000001010000000	15-12	0002020001000000000020
6-8	0200000000000000000000	15-13	0000010001001000000020
7-5	0000000000000200000000	15-14	0000020002001000000020
7-6	0000000000000200000000	16-9	0022000200000020000020
7-7	0000000000000200000000	16-10	0011010100000001000010
8-7	0100000000000000000000	16-11	0011010100000001000010
8-8	0100000000000000000000	16-12	0000000000000000000001
8-9	0200000000000000000000	16-13	0000000000000000000001
9-7	0100000000000000000000	16-17	0000000000000000000002
9-8	0100000000000000000000	16-18	0000000000000000000002
9-9	0220000000002000000000	17-8	0000000000000000000020
9-10	0020000000002000000000	17-9	022000000000002010020
9-11	0020000000002000000000	17-10	101100000000001010010
10-9	0010000000001000000000	17-11	201100000000001010010
		17-12	0000000000000000000001
		17-13	0000000000000000000001
		17-17	0000000000000000000001
		17-18	0000000000000000000001
		18-8	0000000000200000020020
		18-9	201100000020000010010
		18-10	201100000020002010010
		18-11	202000000020002020020
		18-12	0020000000200000000000
		18-14	0000000000000000000001
		18-15	0000000000000000000001
		18-16	0000000000000000000002
		19-8	000010000010000010010
		19-9	001010200010000010010
		19-10	001020200010000020010
		19-11	001000000010000000010
		19-12	0020000000200000000000
		19-14	0000000000000000000002
		19-15	0000000000000000000002
		19-16	0000000000000000000002
		20-8	0000100000000000000010
		20-9	0020101000000000000010
		20-10	0020201000000000000010
		20-11	0020000000000000000020
		22-9	0000000020000000000010
		22-10	0000000020000000000010
		22-11	0000000020000000000000
		23-9	0000000010000000000020
		23-10	0000000010000000000020
		23-11	0000000010000000000000
		23-12	0000000010000000000000
		23-13	0000000020000000000000
		24-9	0000000020000000000000
		24-10	0000000020000000000000
		24-11	0000000020000000000000
		24-12	0000000010000000000000
		24-13	0000000020000000000000