



## Original Research Article

# Raw *versus* cooked food matching: Nutrient intake using the 2015/16 Kenya Integrated Household Budget Survey

Ana Moltedo <sup>a,1</sup>, Sofía Jiménez <sup>b,2</sup>, Cristina Álvarez-Sánchez <sup>a</sup>, Talent Manyani <sup>a</sup>,  
María Priscila Ramos <sup>c,d,e</sup>, Estefanía Custodio <sup>b,\*</sup>

<sup>a</sup> Statistics Division, Food and Agriculture Organization of the United Nations, Viale delle Terme di Caracalla, 00153, Rome, Italy

<sup>b</sup> Joint Research Centre, Sustainable Resources, Economics of Agriculture, European Commission, Joint Research Centre, C/Inca Garcilaso s/n, Sevilla, E-41092, Spain

<sup>c</sup> Universidad de Buenos Aires. Facultad de Ciencias Económicas. Departamento de Economía, Buenos Aires, Argentina

<sup>d</sup> CONICET-Universidad de Buenos Aires, Instituto Interdisciplinario de Economía Política de Buenos Aires (IIEP-Baires), Avenida Córdoba 2122 - 2do Piso, C1120AAQ, Ciudad Autónoma de Buenos Aires, Argentina

<sup>e</sup> Centre d'Etudes Prospectives et d'Information Internationale (CEPII), 20 avenue de Ségur, 75334, Paris cedex 07, France



## ARTICLE INFO

## Keywords:

Food composition tables and databases  
Household consumption and expenditure surveys  
Dietary assessment  
Yield factors  
Retention factors  
Vitamins  
Minerals

## ABSTRACT

In many countries, statistics from household consumption and expenditure surveys are increasingly being used to inform policies and programs. In household surveys, foods are typically reported as they are acquired (the majority are raw). However, the micronutrient content of some foods diminishes during processing and cooking. Using food consumption data from the 2015/16 Kenya Integrated Household Budget Survey, this study analyzes whether mean consumption estimates of dietary energy, macronutrients, and eight micronutrients are equivalent (applying a two-side paired equivalence test) when matching foods: (1) considering the nutrient content in raw foods (as reported in the survey), and (2) considering the nutrient content in foods as typically consumed, thus applying yield and retention factors as needed. Both food matching approaches rendered statistically equivalent mean consumption estimates, at national and county levels, for dietary energy, protein, fats, available carbohydrates, total fiber, calcium and zinc. Non-equivalent means were found for iron, vitamins A, B1, B2, B12, and C. The higher differences between the means were, in percentage change, for vitamin C (47 %), B1 (34 %) and B12 (26 %).

## 1. Introduction

The use of reliable food consumption and food composition data has become increasingly important. There have been increased efforts to incorporate dietary intake indicators to baseline nutrition policies and programs aiming to improve nutrition outcomes as part of one of the multiple dimensions of national sustainable food systems (Eme et al., 2019).

The most suitable methods for assessing dietary intake are those assessing food intake at the individual level (FAO, 2018). A few high-income countries conduct periodic individual dietary intake surveys using standardized methods like 24-hr recalls, but most of the surveys are not representative at national level, as pointed out by Rippin

and colleagues in their study of 53 WHO European countries (Rippin et al., 2018). In low- and middle-income countries these types of surveys are scarcely conducted due to their high costs, time burden and technical complexity to implement them (Coates et al., 2017a,b). National and international actors should advocate and promote strengthening and expanding nationally representative diet and nutrition surveys (World Health Organization, 2015). Meanwhile, researchers could optimize the use of food consumption data collected through alternative surveys, like Household Consumption and Expenditure Surveys (HCES) (Russell et al., 2018). HCES are conducted every 3–5 years in more than 125 countries, they are statistically representative at national and sub-national levels and are much less costly than other dietary data sources (Fiedler, 2013). HCES collect information on households' food

\* Corresponding author at: c/ Inca Garcilaso 3 Edificio EXPO, E-41092, Seville, Spain.

E-mail addresses: [anamoltedo@gmail.com](mailto:anamoltedo@gmail.com) (A. Moltedo), [sjimenez@unizar.es](mailto:sjimenez@unizar.es) (S. Jiménez), [cristina.alvarez@tc.columbia.edu](mailto:cristina.alvarez@tc.columbia.edu) (C. Álvarez-Sánchez), [talentk89@yahoo.com](mailto:talentk89@yahoo.com) (T. Manyani), [mpramos@economicas.uba.ar](mailto:mpramos@economicas.uba.ar) (M.P. Ramos), [estefania.custodio@ec.europa.eu](mailto:estefania.custodio@ec.europa.eu), [ecustodio2014@gmail.com](mailto:ecustodio2014@gmail.com) (E. Custodio).

<sup>1</sup> Home-based: Jaime Zudañez 2782 / 502, 11300, Montevideo, Uruguay.

<sup>2</sup> Departamento de Análisis Económico, Universidad de Zaragoza, Gran Vía 2, CP 50001, Zaragoza, España.

<https://doi.org/10.1016/j.jfca.2021.103879>

Received 14 July 2020; Received in revised form 3 March 2021; Accepted 3 March 2021

Available online 5 March 2021

0889-1575/© 2021 The Authors.

Published by Elsevier Inc.

This is an open access article under the CC BY-NC-ND license

(<http://creativecommons.org/licenses/by-nc-nd/4.0/>).

acquisition and/or consumption; however, their use for dietary assessment is limited to complying with minimum reliability standards, such as considering all possible food sources, capturing the most relevant foods consumed by households and using a food recall period of two weeks or less (Smith et al., 2014). Furthermore, these surveys suffer from limitations such as the impossibility to assess individual intakes (Bromage et al., 2018), challenges in computing the nutrient content from foods consumed away from home (Moltedo et al., 2018), lack of specificity with regard to food use (consumption, waste, food given to pets), and lack of information on food preparation and cooking phases (Fabbri and Crosby, 2016).

Despite their limitations, HCES are increasingly being used in dietary assessments, like the estimation of the prevalence of dietary energy inadequacy (Moltedo et al., 2014; Rawal et al., 2019; Smith and Subandoro, 2007) and of the relative size of nutrient consumption to nutrient requirements (Fiedler and Mwangi, 2016; Sununtnasuk and Fiedler, 2017), as well as for planning food fortification programs (Fiedler, 2013) and producing national food security profiles (FAO, 2019).

To obtain nutrient consumption estimates from HCES data, the nutrient content of each food reported in the survey needs to be calculated. This is done by matching each food reported with an equivalent food in one or more Food Composition Tables and Databases (FCTs/FCDBs). Conducting an appropriate matching relies on following good practices for food matching and the reliability and good quality of FCTs/FCDBs (Micha et al., 2018).

Usually, food quantities reported in HCES refer to the weight of foods as acquired (i.e., before cooking and including non-edible portions). However, the nutrient content of a food varies depending on the form in which the food is consumed (i.e., raw or cooked). To address this limitation, analysts may use cooking yield factors to adjust portion size changes due to moisture loss, water absorption, or fat gains/losses during food preparation, and/or retention factors to correct for nutrient losses or changes during preparation.

Recent studies, based on HCES data, have correctly used cooking yield and/or retention factors to account for alterations in food composition during cooking (Bromage et al., 2018; Coates et al., 2017a, b; Karageorgou et al., 2018). Some FCTs/FCDBs (like the USDA, the Danish or the Canadian ones) include raw and cooked foods. However, others, especially from least developed countries, provide only the nutrient content of the raw form of foods, but not that of their cooked/processed forms. According to Kapsokefalou et al. (2019), the latter are unsuitable for use in nutrient intake calculations.

The Kenya Food Composition Table (FAO and Government of Kenya, 2018) reports the nutrient content of foods in their raw, cooked and/or processed forms, thus allowing for the estimation of nutrient intake based on both the nutrient content in raw foods or in foods as they are consumed (i.e., raw, cooked/processed). The aim of this study is assessing whether, using the 2015/16 Kenya Integrated Household Budget Survey, nutrient intake estimates at national level and 47 counties differ with the type of food matching. We do this by analyzing if mean nutrient consumption estimates differ with the food matching approach used: (1) considering foods as reported in the survey (i.e., most are raw), (2) considering foods as they are typically consumed (most are cooked). To our knowledge, this is the first study of this kind using HCES data.

The outcomes of this study will contribute to improve the interpretation and comparison of national and/or regional nutrient consumption estimates when using HCES data; this is relevant, among other things, for national dietary energy consumption estimates, which are the basis of the computation of the Sustainable Development Goal (SDG) 2.1.1. indicator, the prevalence of undernourishment (Moltedo et al., 2014).

## 2. Materials and methods

### 2.1. Data sources

#### 2.1.1. Kenya Integrated Household Budget Survey

We used data from the 2015/16 Kenya Integrated Household Budget Survey (KIHBS) (Kenya National Bureau of Statistics, 2015), which is representative at national and county level (Table 1). The survey was designed for monitoring progress in improving the living standards of the Kenyan population and providing with benchmark indicators for the government of Kenya's third Medium Term Plan (Government of the Republic of Kenya, 2018). Data collection was conducted in four quarters between September 2015 and August 2016, with cluster enumeration being randomly allocated to each quarter. The survey response was used to adjust the design weights since the sample allocation was not

**Table 1**

Number of sampled<sup>a</sup> and represented<sup>b</sup> households at national level and by county<sup>c</sup>.

Population group	Sampled households <i>n</i>	Represented households <i>n</i> (in thousands)
National	21756	11406.1
Baringo	437	152.3
Bomet	486	179.0
Bungoma	486	320.7
Busia	472	177.0
Elgeyo/ Marakwet	440	99.2
Embu	454	164.3
Garissa	422	78.4
Homa Bay	479	224.5
Isiolo	399	33.7
Kajiado	392	249.6
Kakamega	494	391.2
Kericho	472	210.0
Kiambu	511	599.9
Kilifi	470	326.2
Kirinyaga	465	197.9
Kisii	533	290.0
Kisumu	502	284.4
Kitui	461	236.4
Kwale	466	174.3
Laikipia	462	135.3
Lamu	417	29.8
Machakos	483	327.6
Makueni	494	233.3
Mandera	421	111.0
Marsabit	346	62.0
Meru	534	393.4
Migori	469	230.2
Mombasa	459	395.9
Murang'a	485	323.1
Nairobi City	554	1503.3
Nakuru	493	578.2
Nandi	486	201.6
Narok	457	222.8
Nyamira	489	178.8
Nyandarua	448	191.4
Nyeri	502	271.1
Samburu	421	61.5
Siaya	485	245.8
Taita/Taveta	441	101.1
Tana River	435	56.1
Tharaka-Nithi	447	106.9
Trans Nzoia	485	209.9
Turkana	413	245.7
Uasin Gishu	489	269.6
Vihiga	456	143.8
Wajir	409	69.1
West Pokot	435	119.2

<sup>a</sup> Households with complete data.

<sup>b</sup> Inferred using household weights.

<sup>c</sup> Data are from the 2015/16 Kenya Integrated Household Budget Survey.

proportional to the size of the strata (Kenya National Bureau Statistics, 2018).

For our analysis we used the food consumption module that contains data on food and beverages consumed by households, based on a pre-defined list of 210 foods, over the previous 7 days (from purchases, own production and other sources). Food quantities were reported for 202 non-composite foods, out of the 210 foods. The remaining 8 foods (representing 1.96 % of total food records reported by households) had a poorly defined description (e.g., “food from canteen”, “food from vendors”). For these 8 poorly defined foods, without information on food quantities, it was not possible to estimate the nutrient content applying a food matching approach. The apparent nutrient consumption provided by these foods could have been estimated using methodologies based on monetary values (Moltedo et al., 2014). However, as the scope of the paper is to compare food-matching approaches we considered that the inclusion of other methodologies would have introduced external variability to the analysis. Thus, the analysis was based only on foods consumed at-home (excluding take-away foods) with reported food quantities.

Reported food quantities were standardized into grams or liters; quantities in liters were then converted to grams using density factors (FAO/INFOODS, 2012a). Per capita food quantity outliers were detected for each food using the Median Absolute Deviation method (Leys et al., 2013). Outliers were imputed with the median per capita food quantity at county level.

### 2.1.2. Nutrients selection

We focused our analysis on dietary energy (in kilocalories), protein, fats, available carbohydrates (i.e., total carbohydrates excluding fiber) and total fiber in grams; vitamins B1, B2, and C, calcium, iron and zinc in mg; vitamin B12 in µg and vitamin A in µg of Retinol Equivalents (RE) and µg of Retinol Activity Equivalents (RAE). For dietary energy, results are also presented in kilojoules, as recommended by the International System of Units, which was adopted by all food composition organizations (Burlingame, 2004).

Nutrients were selected based on their public health relevance, wide availability of nutrient data in FCTs/FCDBs and the suitability of the type of data in HCES. Folate was not considered because FCTs/FCDBs not always include all folate forms (FAO/INFOODS, 2012b). Iodine was excluded because the best measure of intake is urinary iodine concentration and not dietary assessment (Brantsaeter et al., 2009). Sodium was not included because the recommended method to assess sodium intake is urine collection, and to a lesser extent individual dietary intake surveys given that results are likely to be underestimated (Hawkes and Webster, 2012).

### 2.1.3. Food composition tables/Food composition databases

We used six FCTs/FCDBs for the food matching. The majority of foods (71.8 %) were matched with the Kenya Food Composition Tables (FAO and Government of Kenya, 2018). Additional food composition databases were used for the remaining foods: The USDA Food Composition Databases (16.3 %) (U.S. Department of Agriculture Agricultural Research Service, 2019), The Tanzania Food Composition Table (5.9 %

(Muhimbili University of Health and Allied Sciences, 2008), the West African Food Composition Table (5.0 %) (Vincent et al., 2020), the Frida Food Database (0.5 %) (Technical University of Denmark National Food Institute, 2016) and the Indian Food Composition Tables (0.5 %) (Longvah et al., 2017) (Table 2).

## 2.2. Food matching

Reported food quantities were adjusted for non-edible portions when necessary. Cooking yield factors were applied to raw edible quantities, to match with the nutrient content in cooked foods. When necessary, retention factors were applied to the nutrient content in raw foods, which were then matched with raw edible quantities (Murphy et al., 1975). For single foods that are mixed prepared foods (e.g., “marmalade”, which includes fruit and sugar), quantities were matched 1:1 with nutrients in a correspondent mixed prepared food.

We applied two food matching approaches:

- The AsAcquired-approach, considering foods as acquired (the majority of them in their raw form); and
- The AsConsumed-approach, considering foods as they are commonly consumed (raw or cooked).

The procedures carried out for the AsAcquired and the AsConsumed food matching approaches are summarized below and depicted in Fig. 1 and Table 3 (which also contains a numeric example for Vitamin B1).

### 2.2.1. AsAcquired-approach

Raw quantities of single foods were matched with the nutrient content in the raw form of the food, independently of the form the food is typically consumed (R-R matching in Fig. 1). Table 3 presents examples for “orange”, “maize flour” and “brown rice”.

### 2.2.2. AsConsumed-approach

In the AsConsumed-approach, we used different matching procedures according to the form in which the food is typically consumed, and on the information available in the FCTs/FCDBs. We assumed that all fruits are consumed raw and that vegetables are consumed cooked.

**2.2.2.1. Food typically consumed raw.** For foods typically consumed raw, we applied the same procedure as for the AsAcquired-approach (e.g., “orange” in Table 3; R-R matching in Fig. 1).

**2.2.2.2. Food typically consumed cooked but information on the nutrient content in the cooked form is not available in the FCT(s)/FCDB(s).** When the cooked form of a single food was not available in the FCTs/FCDBs, the matching was done with its raw form. Raw quantities of single foods were then matched with the nutrient content in the raw form after being adjusted for the amount of nutrients lost after cooking using retention values (e.g., “maize, flour” in Table 3; C-R matching in Fig. 1).

**2.2.2.3. Food typically consumed cooked and information on the nutrient content in the cooked form is available in the FCT(s)/FCDB(s).** Raw

**Table 2**

Number and percentage of survey foods<sup>a</sup> (out of a total of 202) that were matched with each of the six Food Composition Tables/Databases used.

Food Composition Table/Database	Number of survey foods	Percentage of survey foods
Kenya Food Composition Tables	145	71.8
USDA Food Composition Databases	33	16.3
Tanzania Food Composition Table	12	5.9
West African Food Composition Table	10	5.0
Indian Food Composition Tables	1	0.5
Frida Food Database	1	0.5

<sup>a</sup> Foods with reported quantities.

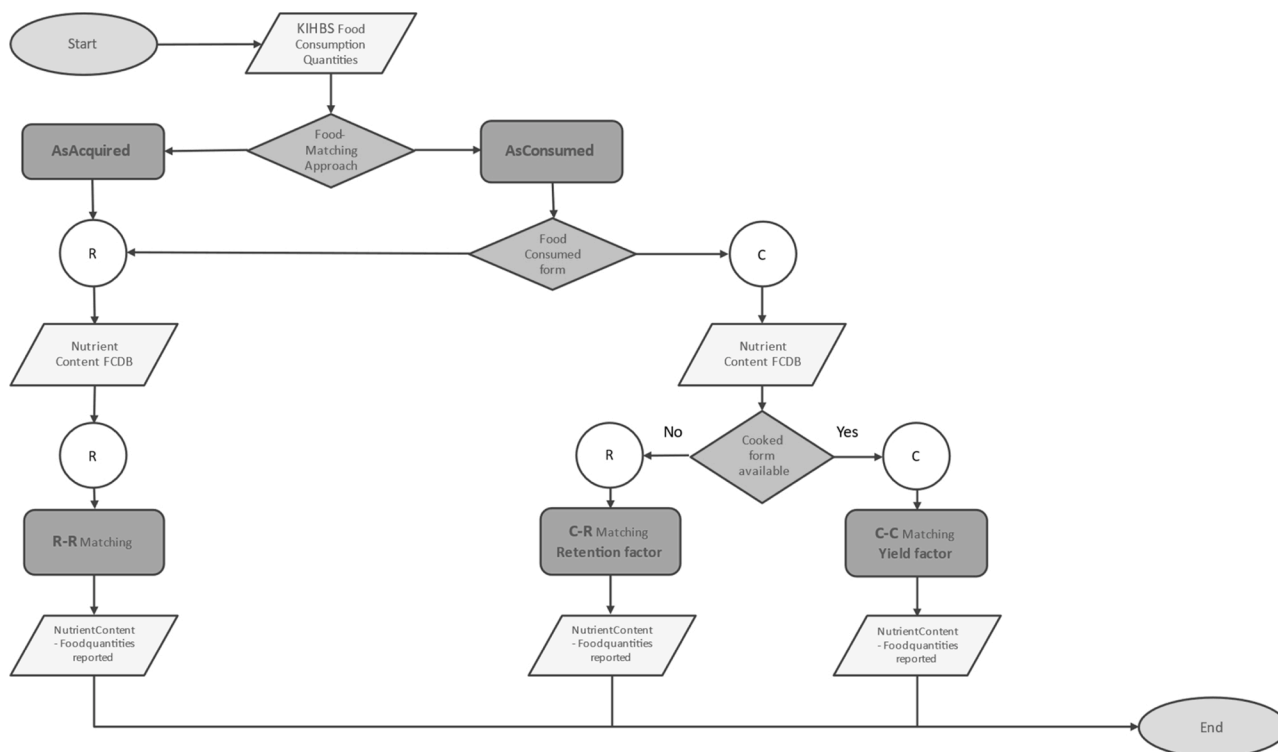


Fig. 1. Flowchart of direct food matching approaches: AsAcquired and AsConsumed. C, Cooked food form; KIHBS, Kenya Integrated Household Budget Survey; R, Raw food form.

The food matching of prepared/processed foods is not displayed in the figure. These were matched with the corresponding prepared/processed food in the FCT/FCDB as shown for the R-R matching.

Source: Authors' own elaboration.

Table 3

Examples of decisions made in the food matches in the AsAcquired and AsConsumed approaches, and an example for Vitamin B1 (in italics).

Food item (KIHBS) Quantities (Q: g)	Food form typically consumed	Food matching		Adjustment of raw food quantities (KIHBS)			Adjustment of nutrients (FCT/FCDB) RF	Nutrients (FCT/FCDB) Vitamin B1 (mg/100g)	Nutrient content in reported quantity Vitamin B1, mg (Nut)
		Approach applied	Food label (FCT/FCDB)	Food form (FCT/FCDB)	EP	YF			
Orange 200 g	Raw	AsAcquired	Orange, raw	Raw	Yes	No	No	0.04	<i>(Q*EP*Nut)/100</i>
		AsConsumed			0.75	N/A	N/A		
Maize, flour 200 g	Cooked	AsAcquired	Maize, whole, flour, raw	Raw	No	No	No	0.25	<i>(Q*Nut)/100</i>
		AsConsumed			Yes	Yes	Yes		<i>(Q*(RF*Nut))/100</i>
		AsAcquired			1	N/A	N/A		<i>(200*0.25)/100=0.5</i>
		AsConsumed			0.8	N/A	0.8		<i>(200*(0.80*0.25))/100=0.4</i>
Brown Rice 200 g	Cooked	AsAcquired	Rice, brown, raw	Raw	No	No	No	0.38	<i>(Q*Nut)/100</i>
		AsConsumed	Rice, brown, boiled (without salt)	Cooked	Yes	Yes	Yes		<i>((Q*YF)*Nut)/100</i>
		AsAcquired	1	N/A	N/A	0.38	<i>(200*0.38)/100=0.76</i>		
		AsConsumed	2.5	N/A	0.08	<i>((200*2.50)*0.08)/100=0.4</i>			

Note: The food matching of prepared/processed foods is not displayed on the table. They were matched with the corresponding prepared/processed food in the FCT/FCDB.

KIHBS, Kenya Integrated Household Budget Survey.  
FCT/FCDB, Food Composition/Food Composition Database.

EP, Edible Portion.

YF, Yield Factor.

RF, Retention Factor.

N/A, Not applicable.

quantities of single foods were adjusted for weight change during processing using cooking yield factors and then matched with the respective nutrient content in the cooked form, namely boiled and drained, grilled and stewed (e.g., “brown rice” in Table 3; C-C matching in Fig. 1). To our knowledge, there are no guidelines on how to treat oil/fat consumption using HCES data. Thus, in the AsConsumed-approach we opted for treating the oil/fat foods as single foods. Consequently, we did not consider the frying cooking method to avoid double counting of their

caloric contribution. An alternative AsConsumed-Approach could have been considering the frying cooking method and excluding the information on oil/fat foods. We call for further research to identify the best approach to be used when processing HCES food consumption data.

Foods in the food consumption module were matched to foods in the FCTs/FCDBs following FAO/INFOODS food matching guidelines (2012b). In this study we considered boiling and draining, stewing and grilling cooking methods. As explained by Greenfield and Southgate



**Table 4**  
Number and percentage of non-edible portions, retention values and yield factors used by source.

Table/Database	Both methods	AsConsumed-approach	
	Non-edible portions	Retention values	Yield factors
Kenya Food Composition Tables	60 (30.0 %)	18 (8.9 %)	62 (30.7 %)
USDA Food Composition Databases	1 (0.5 %)	1 (0.5 %)	1 (0.5 %)
West African Food Composition Table	2 (1.0 %)	0 (0.0 %)	0 (0.0 %)
EUROFIR	0 (0.0 %)	5 (2.5 %)	0 (0.0 %)
Assumed by authors based on similar food items <sup>a</sup>	4 (8.0 %)	0 (0.0 %)	0 (0.0 %)

<sup>a</sup> Refuse factors assumed by authors: 90 % for coffee powder, 57 % for tea leaves, 95 % for sugarcane, and 32 % for beef with bones.

(2003) the boiling and draining cooking method leads to a loss of water-soluble vitamins and heat-labile nutrients. The stewing cooking methods produce a loss or gain of water, and a loss of water-soluble vitamins. The consequence of the grilling method is a loss of water and fat, and a loss of heat-labile and other micronutrients.

Table 4 presents the sources of non-edible portions, cooking yield factors and retention values used in the AsConsumed-approach. Non-edible portions were compiled from the Kenya, the USDA and the West African FCTs/FCDBs. Cooking yield factors were compiled from the Kenya and the USDA FCTs/FCDBs. Retention values were compiled from the Kenya and the USDA FCTs/FCDBs, and the European Food Information Resource (Vásquez-Caicedo et al., 2019), as suggested by FAO/INFOODS food matching guidelines.

Out of the 202 reported foods, 143 were matched directly with single foods, while 59 were matched to more than one single food of the same type (e.g., “apples” was matched with “apple, green skin, unpeeled, raw” and “apple, red, unpeeled, raw”) and arithmetic means were computed to estimate their nutrient content. In total, in the AsAcquired-approach nutrient values were compiled from 269 foods and in the AsConsumed-approach from 338 foods, from the six FCTs/FCDBs. Appendix A, Supplementary Table 1 and Supplementary Table 2 show, respectively, the food matching applied in the AsAcquired-approach and the AsConsumed-approach. Based on the labels of the foods in the survey and the labels of the foods in the FCTs/FCDBs both matching approaches could be considered of medium quality according to FAO/INFOODS (2012b) quality criteria of food matching.

### 2.3. Comparison of approaches

The data analysis was performed in Stata version 14, using the SVY module to adjust for the complex sampling survey design. Mean daily per capita dietary energy and nutrient consumption, and confidence intervals were estimated for Kenya and its 47 counties, 48 population groups in total, for each of the two food matching approaches. Therefore, for each of the 48 population groups, we produced two mean consumption estimates (one using the AsAcquired-approach and one using the AsConsumed-approach). We used population weights (i.e., household weight multiplied by the number of household members) to infer estimates at national and county levels.

We used a two-side paired equivalence test, with equivalence margins of 5 % of the AsAcquired-approach mean estimates, to evaluate whether the two mean consumption estimates were equivalent (Walker and Nowacki, 2011). The two-side test provides two *p*-values based on a 95 % confidence interval; if the maximum of the two *p*-values was lower than 0.025 (i.e., both *p*-values passed the test), we rejected the null hypothesis and concluded that the mean consumption estimates were equivalent.

For each population group, we also estimated the difference between the two mean consumption estimates by subtracting the AsConsumed-approach estimate from the AsAcquired-approach estimate.

## 3. Results and discussion

This study examined the influence of the type of food matching,

AsAcquired (considering the nutrient content in raw foods) and AsConsumed (considering the nutrient content in cooked foods) on mean nutrient consumption estimates. Results show that the influence on the estimates differ by nutrient. The two approaches rendered statistically equivalent mean consumption estimates for dietary energy, protein, fats, available carbohydrates, total fiber and calcium in Kenya at national level and for the 47 counties surveyed. However, this was not the case for vitamins A, B1, B2, B12, C and iron, for which mean consumption estimates were not equivalent in most of the populations studied. Table 5 presents the maximum *p*-value from the two-side equivalence testing.

Estimates of mean consumption, standard deviations and confidence intervals by food matching approach, are presented in Appendix A, Supplementary Table 3, for national and 47 counties.

At national level, the AsAcquired and AsConsumed daily per capita mean consumption estimates were: 2004 kcals (8385 kJ) compared to 2006 kcals (8393 kJ), 57.7 g compared to 57.9 g for protein, 45.2 g compared to 45.0 g for fats, 318 g in both cases for available carbohydrates, 45.1 g compared to 45.3 g for total fiber, and 668 mg compared to 656 mg for calcium. For zinc, the means were equivalent at national level and all counties except for Tharaka-Nithi (14.0 mg with the AsAcquired-approach compared to 13.3 mg with the AsConsumed-approach); the plausible reason is that this county has a high consumption of beans and peas, which present a high loss of zinc when boiled.

As expected, the two approaches estimated non-equivalent means for iron and vitamins A, B1, B2, B12 and C in most population groups. AsConsumed mean consumption estimates were systematically lower for iron and both water-soluble and heat-labile vitamins compared to those estimated with the AsAcquired-approach.

In the case of iron, the means were non-equivalent at national level (20.3 mg with the AsAcquired-approach compared to 18.7 mg with the AsConsumed-approach) and in almost all counties. For vitamins A (expressed in RAE and RE), B1, B2, B12 and C, none of the mean estimates were equivalent. At national level, the AsAcquired and AsConsumed mean estimates were: 361 µg compared to 334 µg of RAE, and 562 µg compared to 516 µg of RE for vitamin A, 1.6 mg compared to 1.2 mg for vitamin B1, 1.4 mg compared to 1.2 mg for vitamin B2, 3.3 µg compared to 2.9 µg for Vitamin B12 and 119 mg compared to 75 mg for Vitamin C. Our findings are in agreement with Zhang et al. (2019), who found that the type of cooking method might not have an impact on estimates of population intake distributions of dietary energy, macronutrients and certain micronutrients.

Statistics of the differences in mean consumption estimates between the two approaches are presented in Tables 6–8 for dietary energy and macronutrients, vitamins, and minerals, respectively. The variability levels (SD) in households' daily per capita consumption, which are shown in the tables, confirm that estimates at the household level are prone to measurement error. However, when performing the average estimate at the population level the random error effects are expected to cancel out; therefore, we present the differences in absolute term and percentage changes. The absolute term differences represent the change in the mean consumption estimate obtained with the AsAcquired-approach as compared to the mean consumption estimate obtained

Table 5

Maximum *p*-value from the two-side paired mean-equivalence tests using an equivalence margin of 5% with a 95 % confidence interval.

Population group	Dietary energy	Protein	Fats	Available carbohydrates	Total Fiber	Vit. A (RAE)	Vit. A (RE)	Vit. B1	Vit. B2	Vit. B12	Vit. C	Calcium	Iron	Zinc
National	0.00	0.00	0.00	0.00	0.00	1.00	1.00	1.00	1.00	1.00	1.00	0.00	1.00	0.00
Baringo	0.00	0.00	0.00	0.00	0.00	1.00	1.00	1.00	1.00	1.00	1.00	0.00	1.00	0.00
Bomet	0.00	0.00	0.00	0.00	0.00	1.00	1.00	1.00	1.00	0.65	1.00	0.00	1.00	0.00
Bungoma	0.00	0.00	0.00	0.00	0.00	1.00	1.00	1.00	1.00	1.00	1.00	0.00	1.00	0.00
Busia	0.00	0.00	0.00	0.00	0.00	1.00	1.00	1.00	1.00	1.00	1.00	0.00	1.00	0.00
Elgeyo/Marakwet	0.00	0.00	0.00	0.00	0.00	1.00	1.00	1.00	1.00	1.00	1.00	0.00	1.00	0.00
Embu	0.00	0.00	0.00	0.00	0.00	1.00	1.00	1.00	1.00	1.00	1.00	0.00	1.00	0.00
Garissa	0.00	0.00	0.00	0.00	0.00	1.00	1.00	1.00	1.00	1.00	1.00	0.00	0.00	0.00
Homa Bay	0.00	0.00	0.00	0.00	0.00	1.00	1.00	1.00	1.00	1.00	1.00	0.00	1.00	0.00
Isiolo	0.00	0.00	0.00	0.00	0.00	1.00	1.00	1.00	1.00	1.00	1.00	0.00	0.98	0.00
Kajiado	0.00	0.00	0.00	0.00	0.00	1.00	1.00	1.00	1.00	1.00	1.00	0.00	1.00	0.00
Kakamega	0.00	0.00	0.00	0.00	0.00	1.00	1.00	1.00	1.00	1.00	1.00	0.00	1.00	0.00
Kericho	0.00	0.00	0.00	0.00	0.00	1.00	1.00	1.00	1.00	1.00	1.00	0.00	1.00	0.00
Kiambu	0.00	0.00	0.00	0.00	0.00	1.00	1.00	1.00	1.00	1.00	1.00	0.00	1.00	0.00
Kilifi	0.00	0.00	0.00	0.00	0.00	1.00	1.00	1.00	1.00	1.00	1.00	0.00	0.90	0.00
Kirinyaga	0.00	0.00	0.00	0.00	0.00	1.00	1.00	1.00	1.00	1.00	1.00	0.00	1.00	0.00
Kisii	0.00	0.00	0.00	0.00	0.00	1.00	1.00	1.00	1.00	1.00	1.00	0.00	1.00	0.00
Kisumu	0.00	0.00	0.00	0.00	0.00	1.00	1.00	1.00	1.00	1.00	1.00	0.00	1.00	0.00
Kitui	0.00	0.00	0.00	0.00	0.00	1.00	1.00	1.00	1.00	1.00	1.00	0.00	1.00	0.00
Kwale	0.00	0.00	0.00	0.00	0.00	1.00	1.00	1.00	1.00	1.00	1.00	0.00	1.00	0.00
Laikipia	0.00	0.00	0.00	0.00	0.00	1.00	1.00	1.00	1.00	1.00	1.00	0.00	1.00	0.00
Lamu	0.00	0.00	0.00	0.00	0.00	1.00	1.00	1.00	1.00	1.00	1.00	0.00	1.00	0.00
Machakos	0.00	0.00	0.00	0.00	0.00	1.00	1.00	1.00	1.00	1.00	1.00	0.00	1.00	0.00
Makueni	0.00	0.00	0.00	0.00	0.00	1.00	1.00	1.00	1.00	1.00	1.00	0.00	1.00	0.00
Mandera	0.00	0.00	0.00	0.00	0.00	0.86	1.00	1.00	1.00	1.00	1.00	0.00	0.77	0.00
Marsabit	0.00	0.00	0.00	0.00	0.00	1.00	1.00	1.00	1.00	1.00	1.00	0.00	1.00	0.00
Meru	0.00	0.00	0.00	0.00	0.00	1.00	1.00	1.00	1.00	1.00	1.00	0.00	1.00	0.00
Migori	0.00	0.00	0.00	0.00	0.00	1.00	1.00	1.00	1.00	1.00	1.00	0.00	1.00	0.00
Mombasa	0.00	0.00	0.00	0.00	0.00	1.00	1.00	1.00	1.00	1.00	1.00	0.00	1.00	0.00
Murang'a	0.00	0.00	0.00	0.00	0.00	1.00	1.00	1.00	1.00	1.00	1.00	0.00	1.00	0.00
Nairobi City	0.00	0.00	0.00	0.00	0.00	1.00	1.00	1.00	1.00	1.00	1.00	0.00	1.00	0.00
Nakuru	0.00	0.00	0.00	0.00	0.00	1.00	1.00	1.00	1.00	1.00	1.00	0.00	1.00	0.00
Nandi	0.00	0.00	0.00	0.00	0.00	1.00	1.00	1.00	1.00	1.00	1.00	0.00	1.00	0.00
Narok	0.00	0.00	0.00	0.00	0.00	1.00	1.00	1.00	1.00	1.00	1.00	0.00	1.00	0.00
Nyamira	0.00	0.00	0.00	0.00	0.00	1.00	1.00	1.00	1.00	1.00	1.00	0.00	1.00	0.00
Nyandarua	0.00	0.00	0.00	0.00	0.00	1.00	1.00	1.00	1.00	1.00	1.00	0.00	1.00	0.00
Nyeri	0.00	0.00	0.00	0.00	0.00	1.00	1.00	1.00	1.00	1.00	1.00	0.00	1.00	0.00
Samburu	0.00	0.00	0.00	0.00	0.00	1.00	1.00	1.00	1.00	1.00	1.00	0.00	1.00	0.00
Siaya	0.00	0.00	0.00	0.00	0.00	1.00	1.00	1.00	1.00	1.00	1.00	0.00	1.00	0.00
Taita/Taveta	0.00	0.00	0.00	0.00	0.00	1.00	1.00	1.00	1.00	1.00	1.00	0.00	1.00	0.00
Tana River	0.00	0.00	0.00	0.00	0.00	1.00	1.00	1.00	1.00	1.00	1.00	0.00	1.00	0.00
Tharaka-Nithi	0.00	0.00	0.00	0.00	0.00	1.00	1.00	1.00	1.00	1.00	1.00	0.00	1.00	0.14
Trans Nzoia	0.00	0.00	0.00	0.00	0.00	1.00	1.00	1.00	1.00	1.00	1.00	0.00	1.00	0.00
Turkana	0.00	0.00	0.00	0.00	0.00	1.00	1.00	1.00	1.00	1.00	1.00	0.00	1.00	0.00
Uasin Gishu	0.00	0.00	0.00	0.00	0.00	1.00	1.00	1.00	1.00	1.00	1.00	0.00	1.00	0.00
Vihiga	0.00	0.00	0.00	0.00	0.00	1.00	1.00	1.00	1.00	1.00	1.00	0.00	1.00	0.00
Wajir	0.00	0.00	0.00	0.00	0.00	0.76	0.98	1.00	0.83	1.00	1.00	0.00	0.00	0.00
West Pokot	0.00	0.00	0.00	0.00	0.00	0.10	1.00	1.00	1.00	1.00	1.00	0.00	1.00	0.00

The light gray cells highlight the nutrient and population groups found to have equivalent means.

Vit., Vitamin.

with the AsConsumed-approach (i.e., AsAcquired-approach – AsConsumed-approach).

Among the 48 population groups considered, the maximum differences were for vitamin C (94 mg/capita/day and 47.2 % change in Kisii county) and vitamin A (48 µg/capita/day RAE and 79 µg/capita/day RE in Nyeri county). Vitamins B1 and B12 presented the second and third highest differences, in mean consumption estimates, in terms of percentage change (34.1 % in Kitui county and 26.5 % in Turkana county, respectively). The high percentage change for Vitamin C could be explained by its double loss effect during cooking, its solubility in water

and being a heat-labile nutrient (Lee et al., 2018).

The extent of the difference in mean consumption estimates between the two approaches depended also on the diet typically consumed by the population. That is, populations with a considerable consumption of foods high in a specific micronutrient, such as vitamin A or vitamin B12, were expected to have higher differences for that micronutrient. For instance, the high differences in percentage change for vitamins A and B12 reflected the consumption of offal, which is high in both vitamins, and of Dagaa fish (omena) high in vitamin B12 (FAO and Government of Kenya, 2018).

**Table 6**

Differences in mean daily per capita consumption estimates for dietary energy and macronutrients<sup>3</sup> between the AsAcquired and AsConsumed food matching approaches at national level and in 47 counties in Kenya.

	Dietary energy		Protein		Fats		Available carbohydrates		Total fiber	
	Diff in mean, kcal (SD)	PC (%)	Diff in mean, g (SD)	PC (%)	Diff in mean, g (SD)	PC (%)	Diff in mean, g (SD)	PC (%)	Diff in mean, g (SD)	PC (%)
National	-2 (7)	-0.1	-0.2 (0.2)	-0.3	0.2 (0.7)	0.4	-0.6 (0.8)	-0.2	-0.2 (0.7)	-0.3
Baringo	-2 (5)	-0.1	-0.2 (0.1)	-0.3	0.1 (0.5)	0.1	-0.6 (0.7)	-0.2	0.1 (0.6)	0.1
Bomet	-3 (4)	-0.1	-0.1 (0.1)	-0.2	0.0 (0.3)	0.1	-0.6 (0.6)	-0.2	-0.2 (0.6)	-0.3
Bungoma	-2 (5)	-0.1	-0.2 (0.1)	-0.3	0.1 (0.4)	0.4	-0.5 (0.7)	-0.2	-0.2 (0.6)	-0.3
Busia	1 (5)	0.0	-0.1 (0.1)	-0.3	0.3 (0.6)	0.9	-0.3 (0.4)	-0.1	-0.1 (0.3)	-0.4
Elgeyo/ Marakwet	-3 (4)	-0.1	-0.1 (0.1)	-0.2	0.0 (0.4)	-0.1	-0.5 (0.5)	-0.2	0.1 (0.5)	0.1
Embu	-2 (6)	-0.1	-0.2 (0.2)	-0.4	0.2 (0.6)	0.5	-0.7 (0.7)	-0.2	-0.3 (0.7)	-0.5
Garissa	1 (4)	0.0	-0.1 (0.1)	-0.2	0.2 (0.4)	0.5	-0.2 (0.5)	-0.1	0.0 (0.2)	-0.2
Homa Bay	-1 (4)	0.0	-0.2 (0.1)	-0.3	0.2 (0.4)	0.4	-0.4 (0.5)	-0.1	-0.2 (0.5)	-0.3
Isiolo	0 (5)	0.0	-0.2 (0.1)	-0.3	0.3 (0.6)	0.5	-0.3 (0.3)	-0.1	0.0 (0.3)	0.1
Kajiado	0 (5)	0.0	-0.2 (0.1)	-0.4	0.3 (0.5)	0.7	-0.4 (0.5)	-0.2	-0.2 (0.4)	-0.6
Kakamega	0 (4)	0.0	-0.1 (0.1)	-0.2	0.2 (0.4)	0.5	-0.4 (0.4)	-0.1	-0.1 (0.4)	-0.3
Kericho	-2 (4)	-0.1	-0.2 (0.1)	-0.3	0.1 (0.3)	0.2	-0.5 (0.5)	-0.2	-0.1 (0.5)	-0.3
Kiambu	-2 (8)	-0.1	-0.3 (0.2)	-0.5	0.4 (0.7)	0.7	-0.8 (1.0)	-0.2	-0.4 (0.9)	-1.1
Kilifi	0 (9)	0.0	-0.1 (0.3)	-0.2	0.1 (0.5)	0.3	-0.3 (1.5)	-0.1	0.2 (0.8)	0.4
Kirinyaga	-4 (7)	-0.2	-0.3 (0.2)	-0.5	0.3 (0.7)	0.6	-1.0 (0.8)	-0.3	-0.6 (0.7)	-1.3
Kisii	-2 (3)	-0.1	-0.1 (0.1)	-0.3	0.0 (0.3)	0.0	-0.3 (0.3)	-0.1	0.0 (0.4)	0.1
Kisumu	0 (5)	0.0	-0.2 (0.1)	-0.3	0.3 (0.4)	0.7	-0.4 (0.5)	-0.1	-0.1 (0.4)	-0.4
Kitui	-3 (6)	-0.2	-0.2 (0.1)	-0.3	-0.1 (0.6)	-0.3	-0.6 (0.7)	-0.2	0.3 (0.8)	0.6
Kwale	0 (4)	0.0	-0.1 (0.1)	-0.2	0.2 (0.4)	0.5	-0.3 (0.4)	-0.1	-0.1 (0.3)	-0.3
Laikipia	-3 (8)	-0.1	-0.2 (0.2)	-0.4	0.2 (0.8)	0.4	-0.8 (0.8)	-0.2	-0.2 (0.8)	-0.4
Lamu	2 (5)	0.1	-0.1 (0.1)	-0.2	0.4 (0.6)	0.7	-0.2 (0.3)	-0.1	0.1 (0.4)	0.2
Machakos	-3 (6)	-0.1	-0.2 (0.2)	-0.3	0.1 (0.7)	0.1	-0.7 (0.7)	-0.2	0.0 (0.8)	0.0
Makueni	-4 (6)	-0.2	-0.2 (0.2)	-0.3	-0.1 (0.6)	-0.2	-0.8 (0.7)	-0.2	0.2 (0.9)	0.2
Mandera	-1 (2)	-0.1	0.0 (0.1)	-0.1	-0.1 (0.3)	-0.2	-0.1 (0.2)	-0.1	0.2 (0.2)	0.9
Marsabit	1 (9)	0.0	-0.1 (0.1)	-0.2	0.2 (1.0)	0.4	-0.2 (0.2)	-0.1	0.4 (0.5)	1.2
Meru	-4 (7)	-0.2	-0.3 (0.2)	-0.4	0.1 (0.7)	0.2	-0.8 (0.8)	-0.2	0.0 (0.8)	0.0
Migori	-1 (4)	0.0	-0.2 (0.1)	-0.2	0.1 (0.4)	0.2	-0.3 (0.6)	-0.1	0.0 (0.4)	0.0
Mombasa	2 (5)	0.1	-0.2 (0.2)	-0.4	0.5 (0.6)	1.0	-0.3 (0.3)	-0.1	-0.1 (0.3)	-0.5
Murang'a	-5 (6)	-0.2	-0.2 (0.1)	-0.4	0.1 (0.5)	0.2	-1.0 (0.7)	-0.3	-0.5 (0.7)	-1.2
Nairobi City	0 (8)	0.0	-0.3 (0.3)	-0.4	0.5 (0.8)	0.9	-0.6 (1.0)	-0.2	-0.4 (0.6)	-1.0
Nakuru	-3 (7)	-0.2	-0.3 (0.2)	-0.4	0.1 (0.7)	0.2	-0.8 (0.7)	-0.2	-0.3 (0.7)	-0.6
Nandi	-3 (4)	-0.2	-0.1 (0.1)	-0.3	0.0 (0.3)	0.1	-0.6 (0.6)	-0.2	-0.2 (0.5)	-0.5
Narok	-4 (8)	-0.2	-0.2 (0.2)	-0.4	0.2 (0.7)	0.4	-0.9 (1.0)	-0.3	-0.5 (0.7)	-1.0
Nyamira	-1 (4)	-0.1	-0.1 (0.1)	-0.2	0.1 (0.4)	0.2	-0.4 (0.4)	-0.1	-0.2 (0.4)	-0.3
Nyandarua	-5 (7)	-0.2	-0.3 (0.2)	-0.4	0.1 (0.6)	0.3	-0.9 (0.8)	-0.3	-0.5 (0.7)	-0.9
Nyeri	-5 (10)	-0.2	-0.3 (0.2)	-0.5	0.4 (0.9)	0.8	-1.4 (1.3)	-0.4	-0.9 (1.0)	-1.8
Samburu	1 (7)	0.1	-0.1 (0.1)	-0.2	0.3 (0.8)	1.0	-0.3 (0.3)	-0.1	0.1 (0.3)	0.4
Siaya	-1 (5)	0.0	-0.2 (0.1)	-0.3	0.2 (0.5)	0.5	-0.4 (0.5)	-0.1	-0.1 (0.5)	-0.2
Taita/Taveta	1 (5)	0.0	-0.1 (0.1)	-0.3	0.3 (0.6)	0.7	-0.3 (0.3)	-0.1	-0.1 (0.3)	-0.3
Tana River	1 (4)	0.0	-0.1 (0.1)	-0.3	0.2 (0.4)	0.5	-0.2 (0.2)	-0.1	0.0 (0.3)	0.1
Tharaka-Nithi	-2 (8)	-0.1	-0.2 (0.2)	-0.3	0.1 (0.9)	0.4	-0.7 (0.8)	-0.2	0.1 (0.8)	0.2
Trans Nzoia	-2 (5)	-0.1	-0.2 (0.1)	-0.3	0.1 (0.4)	0.2	-0.6 (0.6)	-0.2	-0.1 (0.6)	-0.3
Turkana	3 (19)	0.2	-0.1 (0.1)	-0.2	0.4 (2.1)	0.9	-0.2 (0.3)	-0.1	0.5 (0.7)	1.3
Uasin Gishu	-3 (7)	-0.2	-0.2 (0.1)	-0.3	0.1 (0.5)	0.2	-0.7 (0.9)	-0.2	-0.3 (0.7)	-0.7
Vihiga	-2 (4)	-0.1	-0.1 (0.1)	-0.3	0.1 (0.3)	0.3	-0.5 (0.6)	-0.2	-0.3 (0.5)	-0.5
Wajir	0 (3)	0.0	-0.1 (0.1)	-0.2	0.1 (0.3)	0.2	-0.2 (0.2)	-0.1	0.0 (0.2)	0.0
West Pokot	-1 (6)	0.0	-0.1 (0.1)	-0.2	0.1 (0.5)	0.4	-0.3 (0.7)	-0.1	-0.1 (0.5)	-0.2

Diff, Difference, AsAcquired – AsConsumed.

SD, Standard Deviation of the mean differences.

PC, Percentage change,  $100 \times ((\text{AsAcquired} - \text{AsConsumed}) / \text{AsAcquired})$ .

<sup>a</sup> Estimated mean consumption, standard deviations and confidence intervals by food matching approach are presented in [Appendix A](#) for all the nutrients in the 48 population groups.

It is important to note that the results obtained in this study are based on the foods consumed in Kenya, the cooking methods selected, and the criteria used to elaborate the FCTs/FCDBs. For instance, in the Kenya FCT all nutrient values of cooked foods were calculated from the analytical data of their raw form using cooking yield and nutrient retention factors (FAO and Government of Kenya, 2018), instead of being based on analyses of cooked food samples (which would be preferable).

The effectiveness of dietary assessments, crucial to avoid providing incorrect evidence for informing and developing nutrition-based programs and policies, depends (among other things) on following good practices for food matching, and the reliability and good quality of

FCTs/FCDBs (Micha et al., 2018). Most published FCTs/FCDBs, especially from low- and middle-income countries, contain mostly or only nutrient content in raw foods. Efforts should be stepped up to support and fund the inclusion of cooked and processed foods in FCTs/FCDBs (Ene-Obong et al., 2019). Until national FCTs/FCDBs are updated to inform on cooked and processed foods, as consumed in the country, analysts in charge of producing dietary energy, macronutrients, calcium and/or zinc average consumption estimates, at national level using HCES data, could consider matching survey foods with raw foods in FCTs/FCDBs. However, caution should be taken when interpreting and using vitamins and iron statistics from dietary assessments (such as the level of inadequacy).

**Table 7**

Differences in mean, daily per capita, consumption estimates for vitamins<sup>a</sup> between the AsAcquired and AsConsumed food matching approaches at national level and in 47 counties in Kenya.

	Vitamin A		Vitamin A		Vitamin B1		Vitamin B2		Vitamin B12		Vitamin C	
	Diff in mean, µg RAE (SD)	PC (%)	Diff in mean, µg RE (SD)	PC (%)	Diff in mean, mg (SD)	PC (%)	Diff in mean, mg (SD)	PC (%)	Diff in mean, µg (SD)	PC (%)	Diff in mean, mg (SD)	PC (%)
National	28 (22)	7.6	46 (40)	8.2	0.4 (0.3)	27.7	0.1 (0.1)	8.8	0.4 (0.6)	12.6	43 (42)	36.4
Baringo	21 (18)	5.8	37 (32)	7.0	0.5 (0.3)	32.1	0.1 (0.1)	9.0	0.3 (0.5)	12.2	33 (24)	33.6
Bomet	23 (15)	6.3	46 (29)	7.7	0.4 (0.2)	32.3	0.1 (0.1)	7.4	0.1 (0.3)	4.5	58 (40)	45.4
Bungoma	20 (13)	7.6	35 (24)	8.4	0.4 (0.2)	30.3	0.1 (0.1)	10.3	0.5 (0.7)	11.2	34 (22)	33.7
Busia	15 (11)	8.5	24 (19)	8.6	0.3 (0.2)	29.3	0.1 (0.0)	12.3	0.6 (0.6)	11.6	30 (22)	31.3
Elgeyo/ Marakwet	16 (13)	6.0	29 (25)	7.6	0.5 (0.2)	33.2	0.1 (0.1)	8.5	0.2 (0.3)	8.7	32 (26)	39.5
Embu	28 (24)	8.3	51 (45)	8.8	0.5 (0.3)	28.8	0.1 (0.1)	9.2	0.1 (0.2)	9.2	44 (44)	35.6
Garissa	11 (7)	6.2	12 (9)	6.0	0.3 (0.1)	18.9	0.1 (0.1)	5.9	0.4 (0.5)	23.9	3 (6)	24.8
Homa Bay	33 (17)	8.2	59 (34)	9.0	0.5 (0.2)	28.0	0.1 (0.1)	11.3	1.5 (1.3)	12.6	65 (39)	35.5
Isiolo	13 (11)	5.9	20 (17)	6.7	0.3 (0.2)	22.2	0.1 (0.0)	6.2	0.3 (0.4)	13.6	15 (17)	35.2
Kajiado	22 (18)	6.4	31 (32)	6.1	0.3 (0.2)	23.0	0.1 (0.1)	5.8	0.2 (0.4)	8.1	24 (26)	32.7
Kakamega	33 (20)	9.8	60 (37)	10.5	0.5 (0.2)	31.0	0.2 (0.1)	12.8	0.4 (0.4)	12.9	71 (45)	44.4
Kericho	19 (12)	5.6	33 (21)	6.9	0.4 (0.2)	29.3	0.1 (0.1)	7.1	0.4 (0.4)	11.0	38 (22)	33.6
Kiambu	32 (22)	7.2	56 (43)	7.8	0.4 (0.2)	24.5	0.1 (0.1)	5.8	0.2 (0.4)	9.7	49 (40)	37.5
Kilifi	30 (19)	9.9	41 (33)	10.2	0.5 (0.4)	26.3	0.1 (0.1)	10.5	0.5 (0.5)	17.6	19 (19)	29.3
Kirinyaga	34 (24)	7.2	60 (44)	7.7	0.4 (0.2)	26.1	0.1 (0.1)	6.5	0.2 (0.2)	8.6	50 (38)	34.1
Kisii	32 (16)	8.0	62 (33)	9.4	0.4 (0.2)	30.4	0.1 (0.1)	10.3	0.5 (0.5)	10.7	94 (46)	47.2
Kisumu	23 (15)	7.9	34 (26)	8.3	0.4 (0.2)	26.0	0.1 (0.1)	9.9	0.8 (0.7)	13.3	31 (31)	38.8
Kitui	20 (13)	8.7	33 (22)	9.5	0.8 (0.4)	34.1	0.1 (0.1)	12.7	0.2 (0.3)	25.4	19 (19)	28.8
Kwale	24 (21)	8.3	34 (33)	8.0	0.4 (0.2)	24.6	0.1 (0.1)	9.9	0.4 (0.5)	15.0	21 (26)	23.2
Laikipia	26 (23)	7.2	45 (40)	8.0	0.5 (0.3)	28.4	0.1 (0.1)	7.3	0.4 (0.6)	15.7	34 (33)	34.5
Lamu	28 (21)	8.9	36 (28)	8.6	0.5 (0.3)	25.2	0.1 (0.1)	8.2	0.7 (0.7)	25.3	20 (28)	28.8
Machakos	27 (17)	8.4	44 (30)	9.0	0.6 (0.4)	29.9	0.1 (0.1)	10.5	0.2 (0.4)	16.4	33 (29)	32.3
Makueni	23 (16)	9.1	39 (27)	9.8	0.8 (0.5)	33.1	0.2 (0.1)	11.7	0.2 (0.3)	21.2	27 (30)	30.5
Mandera	3 (3)	5.3	5 (4)	6.8	0.3 (0.2)	27.8	0.0 (0.0)	8.4	0.1 (0.3)	14.4	1 (2)	15.8
Marsabit	9 (7)	6.8	15 (12)	8.9	0.4 (0.2)	28.3	0.1 (0.1)	9.1	0.2 (0.4)	16.9	6 (11)	38.1
Meru	28 (20)	7.8	50 (38)	8.6	0.6 (0.4)	30.5	0.1 (0.1)	8.4	0.2 (0.2)	9.6	39 (31)	33.9
Migori	23 (15)	9.4	38 (25)	9.4	0.4 (0.2)	29.8	0.1 (0.0)	12.2	1.0 (1.0)	11.6	41 (28)	30.1
Mombasa	30 (21)	8.1	44 (33)	8.0	0.3 (0.2)	20.9	0.1 (0.1)	8.3	0.6 (0.7)	14.3	29 (24)	31.5
Murang'a	33 (19)	7.4	54 (35)	7.9	0.5 (0.2)	25.8	0.1 (0.1)	6.6	0.3 (0.3)	13.0	45 (34)	33.8
Nairobi City	45 (30)	7.5	71 (57)	7.5	0.3 (0.2)	20.5	0.1 (0.1)	7.8	0.5 (0.7)	14.2	61 (58)	36.9
Nakuru	37 (24)	7.7	63 (46)	8.1	0.5 (0.3)	26.9	0.1 (0.1)	7.7	0.4 (0.5)	14.3	66 (49)	40.0
Nandi	21 (13)	6.5	40 (23)	8.1	0.4 (0.2)	30.7	0.1 (0.1)	7.6	0.2 (0.2)	5.9	45 (28)	36.8
Narok	30 (24)	6.5	53 (46)	7.5	0.5 (0.3)	27.9	0.1 (0.1)	6.9	0.4 (0.6)	12.2	50 (44)	38.6
Nyamira	28 (20)	6.9	52 (39)	7.9	0.4 (0.2)	28.1	0.1 (0.1)	10.0	0.3 (0.4)	11.8	77 (62)	40.9
Nyandarua	37 (29)	7.7	65 (56)	8.5	0.5 (0.3)	26.0	0.1 (0.1)	6.7	0.2 (0.3)	12.6	40 (29)	34.8
Nyeri	48 (31)	7.5	79 (58)	7.8	0.4 (0.2)	24.1	0.1 (0.1)	6.5	0.4 (0.4)	13.6	61 (48)	34.9
Samburu	7 (8)	6.4	13 (13)	8.4	0.3 (0.2)	32.1	0.1 (0.0)	8.5	0.2 (0.4)	14.6	8 (13)	36.4
Siaya	25 (17)	8.2	40 (27)	8.0	0.5 (0.2)	30.2	0.1 (0.1)	12.2	1.1 (1.0)	11.6	40 (31)	29.5
Taita/Taveta	28 (17)	8.0	46 (30)	8.7	0.4 (0.2)	26.4	0.1 (0.1)	9.7	0.6 (0.7)	15.5	47 (36)	37.7
Tana River	13 (10)	7.3	20 (17)	8.0	0.3 (0.2)	24.9	0.1 (0.0)	7.0	0.1 (0.3)	10.3	17 (21)	37.6
Tharaka-Nithi	24 (20)	8.1	43 (36)	8.8	0.7 (0.4)	32.6	0.1 (0.1)	10.4	0.3 (0.4)	17.9	27 (28)	28.8
Trans Nzoia	27 (16)	7.0	46 (32)	8.0	0.5 (0.3)	30.4	0.1 (0.1)	9.9	0.3 (0.5)	12.7	57 (41)	41.0
Turkana	15 (17)	12.1	22 (25)	13.3	0.4 (0.4)	32.8	0.1 (0.1)	12.5	0.5 (1.0)	26.5	9 (17)	38.2
Uasin Gishu	22 (17)	6.1	37 (32)	7.0	0.4 (0.2)	28.7	0.1 (0.1)	7.1	0.3 (0.4)	9.8	37 (29)	37.1
Vihiga	27 (16)	8.5	50 (29)	9.2	0.4 (0.2)	28.9	0.1 (0.1)	11.3	0.4 (0.4)	11.0	66 (42)	29.9
Wajir	5 (5)	4.7	6 (5)	5.0	0.3 (0.1)	19.1	0.0 (0.0)	4.9	0.2 (0.3)	13.7	2 (3)	26.0
West Pokot	11 (8)	4.6	20 (15)	6.3	0.3 (0.2)	32.5	0.1 (0.0)	7.6	0.1 (0.3)	7.2	26 (23)	42.1

Diff, Difference, AsAcquired – AsConsumed.

SD, Standard Deviation of the mean differences.

PC, Percentage change,  $100 * ((AsAcquired - AsConsumed) / AsAcquired)$ .

<sup>a</sup> Estimated mean consumption, standard deviations and confidence intervals by food matching approach, are presented in [Appendix A](#), for all the nutrients in the 48 population groups.

This study did not look at consumption estimates for particular foods or food groups; however, no difference is expected between the two food matching approaches for average estimates of dietary energy and macronutrient consumption at the food level, if food quantities are adjusted using cooking yield factors, because there are no nutrient losses/changes during processing and cooking (i.e., their retention factor value is 1).

#### 4. Conclusions

The impact of the food matching approach (i.e., nutrient content in raw vs cooked food) on the average consumption estimates, using food consumption data collected in Kenya, varies depending on the nutrient of interest. Matching foods from the 2015/16 Kenyan IHBS with foods in their raw form in FCTs/FCDBs produced equivalent mean consumption estimates for dietary energy, macronutrients, calcium and zinc



**Table 8**

Differences in mean, daily per capita, consumption estimates for minerals<sup>a</sup> between the AsAcquired and AsConsumed food matching approaches at national level and in 47 counties in Kenya.

	Calcium		Iron		Zinc	
	Diff in mean, mg (SD)	PC (%)	Diff in mean, mg (SD)	PC (%)	Diff in mean, mg (SD)	PC (%)
National	12 (16)	1.8	1.5 (1.2)	7.6	0.3 (0.3)	2.9
Baringo	8 (10)	1.3	1.5 (0.9)	6.3	0.4 (0.3)	3.5
Bomet	17 (16)	2.1	1.5 (1.1)	7.5	0.3 (0.3)	2.4
Bungoma	8 (8)	1.3	1.3 (0.8)	7.1	0.3 (0.2)	2.4
Busia	7 (7)	1.3	0.9 (0.6)	6.1	0.2 (0.1)	1.8
Elgeyo/Marakwet	10 (10)	1.5	1.5 (0.9)	6.8	0.3 (0.2)	3.0
Embu	16 (16)	2.8	2.1 (1.4)	9.7	0.5 (0.3)	4.3
Garissa	-2 (4)	-0.5	0.3 (0.4)	3.1	0.1 (0.1)	1.4
Homa Bay	13 (13)	1.3	1.7 (0.9)	6.8	0.2 (0.2)	1.6
Isiolo	1 (7)	0.1	0.8 (0.5)	5.4	0.3 (0.2)	2.6
Kajiado	6 (10)	1.0	0.9 (0.7)	6.3	0.2 (0.2)	2.4
Kakamega	23 (18)	3.5	2.3 (1.5)	10.1	0.3 (0.2)	3.2
Kericho	10 (9)	1.4	1.3 (0.7)	6.4	0.3 (0.2)	2.4
Kiambu	10 (13)	1.3	1.4 (0.9)	7.5	0.3 (0.3)	2.7
Kilifi	5 (10)	1.2	1.2 (1.0)	5.4	0.3 (0.3)	2.3
Kirinyaga	13 (16)	1.9	1.9 (1.2)	9.2	0.4 (0.3)	3.3
Kisii	26 (16)	2.7	2.0 (1.2)	9.6	0.3 (0.2)	2.9
Kisumu	7 (13)	1.1	1.1 (0.9)	6.7	0.2 (0.2)	1.7
Kitui	8 (19)	1.9	2.0 (1.3)	8.1	0.6 (0.4)	4.7
Kwale	9 (13)	2.2	1.1 (1.0)	6.3	0.3 (0.2)	2.1
Laikipia	7 (13)	1.1	1.5 (1.1)	7.4	0.4 (0.3)	3.3
Lamu	6 (14)	1.2	1.3 (1.2)	6.4	0.3 (0.3)	3.3
Machakos	16 (26)	2.7	2.0 (1.5)	7.9	0.6 (0.5)	3.9
Makueni	10 (17)	1.9	2.0 (1.4)	7.7	0.6 (0.5)	4.1
Mandera	-2 (4)	-0.9	0.4 (0.4)	4.9	0.2 (0.1)	3.4
Marsabit	-3 (7)	-1.0	0.9 (0.6)	6.3	0.4 (0.2)	3.9
Meru	12 (15)	1.9	2.3 (1.4)	9.2	0.6 (0.4)	4.3
Migori	7 (13)	1.0	1.3 (1.0)	6.9	0.2 (0.2)	1.6
Mombasa	8 (9)	1.4	1.2 (0.9)	6.4	0.2 (0.2)	2.1
Murang'a	11 (13)	1.5	1.7 (1.0)	8.5	0.4 (0.3)	2.8
Nairobi City	15 (18)	1.8	1.6 (1.2)	7.7	0.4 (0.3)	3.1
Nakuru	18 (17)	2.1	1.9 (1.3)	7.9	0.4 (0.3)	3.4
Nandi	13 (11)	1.9	1.6 (0.9)	7.9	0.3 (0.2)	2.4
Narok	13 (16)	1.6	1.6 (1.0)	7.4	0.3 (0.3)	2.6
Nyamira	21 (18)	2.6	1.7 (1.1)	6.7	0.3 (0.2)	2.8
Nyandarua	14 (14)	2.1	1.8 (1.1)	8.0	0.5 (0.4)	3.5
Nyeri	16 (17)	1.9	2.3 (1.5)	9.6	0.5 (0.4)	3.6
Samburu	0 (6)	0.1	0.7 (0.5)	6.2	0.2 (0.2)	3.2
Siaya	8 (11)	0.9	1.4 (0.9)	6.5	0.3 (0.2)	1.9
Taita/Taveta	16 (13)	2.4	1.6 (0.9)	8.6	0.3 (0.2)	3.3
Tana River	3 (9)	0.8	0.8 (0.7)	5.9	0.2 (0.2)	2.3
Tharaka-Nithi	15 (24)	2.5	2.4 (1.8)	7.5	0.7 (0.5)	4.9
Trans Nzoia	19 (15)	2.7	1.9 (1.2)	9.1	0.3 (0.3)	3.2
Turkana	0 (12)	0.0	1.0 (1.0)	6.9	0.3 (0.3)	4.1
Uasin Gishu	11 (12)	1.6	1.4 (1.0)	7.7	0.3 (0.2)	2.6
Vihiga	20 (13)	3.0	1.7 (0.9)	9.2	0.3 (0.2)	2.6
Wajir	-3 (4)	-0.9	0.4 (0.3)	3.2	0.1 (0.1)	1.8
West Pokot	8 (8)	1.5	0.9 (0.6)	6.4	0.2 (0.2)	2.2

Diff, Difference, AsAcquired – AsConsumed.

SD, Standard Deviation of the mean differences.

PC, Percentage change,  $100 \times ((\text{AsAcquired} - \text{AsConsumed}) / \text{AsAcquired})$ .

<sup>a</sup> Estimated mean consumption, standard deviations and confidence intervals by food matching approach, are presented in Appendix A, for all the nutrients in the 48 population groups.

compared to matching them with foods as they are commonly consumed (having adjusted raw food quantities for changes due to moisture loss, water absorption, or fat gains/losses during food preparation). One implication of our results is the possibility of using HCES data, based on a raw food matching, to estimate a country's national dietary energy consumption, which is one of the two parameters needed for computing the SDG 2.1.1. indicator, the prevalence of undernourishment.

However, in the case of vitamins A, B1, B2, B12, C and iron, the mean

consumption estimates were not equivalent; a food matching based on nutrient composition in foods as consumed produces systematically lower mean estimates of these nutrients. Caution should be taken when producing and interpreting dietary nutrient consumption estimates, at national and subnational levels, based on HCES data; especially, indicators such as the level of inadequacy.

#### Author statement

**Ana Moltedo:** Conceptualization, Methodology, Software, Validation, Formal Analysis, Drafting – Original Draft, Visualization, Project Administration. **Cristina Álvarez-Sánchez:** Conceptualization, Methodology, Formal Analysis, Writing - Review & Editing. **Talent Manyani:** Software, Formal Analysis. **Sofía Jiménez:** Formal Analysis, Writing - Review & Editing. **María Priscilla Ramos:** Formal Analysis, Writing - Review & Editing. **Estefanía Custodio:** Formal Analysis, Writing - Review & Editing.

#### Funding

This work was supported by the European Commission Joint Research Centre and, through the Statistics Division of the Food and Agriculture Organization of the United Nations, by the Bill & Melinda Gates Foundation [MTF-GLO-707-BMG] and the European Commission (DEVCO) [GCP/INT/245/EC].

#### Declaration of Competing Interest

None.

#### Acknowledgments

The authors gratefully acknowledge Mr. Josiah Waithaka Kaara and his team, from the Kenya National Bureau of Statistics (KNBS), for giving access to the data and their expert advice; the KNBS Poverty Analysis Unit for their expert advice on county level statistics; and Ms. Fernanda Grande, for her expert advice on food composition and food matching.

#### Appendix A. Supplementary data

Supplementary material related to this article can be found, in the online version, at doi:<https://doi.org/10.1016/j.jfca.2021.103879>.

#### References

- Brantsaeter, A.L., Haugen, M., Julshamn, K., Alexander, J., Meltzer, H.M., 2009. Evaluation of urinary iodine excretion as a biomarker for intake of milk and dairy products in pregnant women in the Norwegian Mother and Child Cohort Study (MoBa). *Eur. J. Clin. Nutr.* 63, 347–354. <https://doi.org/10.1038/sj.ejcn.1602952>.
- Bromage, S., Rosner, B., Rich-Edwards, Jw., Ganmaa, D., Tsolmon, S., Tserendejid, Z., Odbayar, T.-O., Traeger, M., Fawzi, Ww., 2018. Comparison of methods for estimating dietary food and nutrient intakes and intake densities from household consumption and expenditure data in Mongolia. *J. Nutr.* 10, 703. <https://doi.org/10.3390/nu10060703>.
- Burlingame, B., 2004. Fostering quality data in food composition databases: visions for the future. *J. Food Anal.* 17, 251–258. <https://doi.org/10.1016/j.jfca.2004.03.026>.
- Coates, J., Rogers, B.L., Blau, A., Lauer, J., Roba, A., 2017a. Filling a dietary data gap? Validation of the adult male equivalent method of estimating individual nutrient intakes from household-level data in Ethiopia and Bangladesh. *Food Policy* 72, 27–42. <https://doi.org/10.1016/j.foodpol.2017.08.010>.
- Coates, J.C., Colaiezzi, B.A., Bell, W., Charrondiere, U.R., Leclercq, C., 2017b. Overcoming dietary assessment challenges in low-income countries: technological solutions proposed by the international dietary data expansion (INDDEx) project. *J. Nutr.* 9, 289. <https://doi.org/10.3390/nu9030289>.
- Eme, P.E., Douwes, J., Kim, N., Foliaki, S., Burlingame, B., 2019. Review of methodologies for assessing sustainable diets and potential for development of harmonised indicators. *Int. J. Environ. Res. Public Health* 16, 1184. <https://doi.org/10.3390/ijerph16071184>.
- Ene-Obong, H., Schönfeldt, H.C., Campaore, E., Kimani, A., Mwaisaka, R., Vincent, A., El Ati, J., Kouebou, P., Presser, K., Finglas, P., Charrondiere, U.R., 2019. Importance and use of reliable food composition data generation by nutrition/dietetic professionals towards solving Africa's nutrition problem: constraints and the role of

- FAO/INFOODS/AFROFOODS and other stakeholders in future initiatives. *Proc. Nutr. Soc.* 78, 496–505. <https://doi.org/10.1017/S0029665118002926>.
- Fabrizi, A.D.T., Crosby, G.A., 2016. A review of the impact of preparation and cooking on the nutritional quality of vegetables and legumes. *Int. J. Gastron. Food Sci.* 3, 2–11. <https://doi.org/10.1016/j.ijgfs.2015.11.001>.
- FAO, 2018. *Dietary Assessment: a Resource Guide to Method Selection and Application in Low Resource Settings*. Rome.
- FAO, 2019. *Tonga Food Security Profile [WWW Document]*. URL [www.fao.org/documents/card/en/c/CA6039EN](http://www.fao.org/documents/card/en/c/CA6039EN) (accessed 2.9.21).
- FAO, Government of Kenya, 2018. *Kenya Food Composition Tables*. Nairobi.
- FAO/INFOODS, 2012a. *Density Database (version 2.0)*. Rome (Italy).
- FAO/INFOODS, 2012b. *Guidelines for Food Matching, Version 1*. FAO, Rome ed.
- Fiedler, J.L., 2013. Towards overcoming the food consumption information gap: strengthening household consumption and expenditures surveys for food and nutrition policymaking. *J. Glob. Food Secur.* 2, 56–63.
- Fiedler, J.L., Mwangi, D.M., 2016. Using Household Consumption and Expenditure Surveys to Make Inferences About Food Consumption, Nutrient Intakes and Nutrition Status: How Important Is It to Adjust for Meal Partakers? (No. 1571), Discussion Paper. Washington, D.C.
- Government of the Republic of Kenya, 2018. *THIRD MEDIUM TERM PLAN 2018 – 2022*. The National Treasury and Planning, Nairobi.
- Greenfield, H., Southgate, D.A.T., 2003. *Food Composition Data. Production, Management and Use*, 2nd ed. FAO, Rome.
- Hawkes, C., Webster, J., 2012. National approaches to monitoring population salt intake: a trade-off between accuracy and practicality? *PLoS One* 7, e46727.
- Kapsokefalou, M., Roe, M., Turrini, A., Costa, H.S., Martinez-Victoria, E., Marletta, L., Berry, R., Finglas, P., 2019. Food composition at present: new challenges. *Nutrients* 11. <https://doi.org/10.3390/nu11081714>.
- Karageorgou, D., Imamura, F., Zhang, J., Shi, P., Mozaffarian, D., Micha, R., 2018. Assessing dietary intakes from household budget surveys: a national analysis in Bangladesh. *J. Public Libr. Sci. One* 13, e0202831. <https://doi.org/10.1371/journal.pone.0202831>.
- Kenya National Bureau of Statistics, 2015. *Kenya Integrated Household Survey Data 2015/2016 [WWW Document]*. URL <http://54.213.151.253/nada/index.php/catalog/88> (Accessed 12.15.19).
- Kenya National Bureau of Statistics, 2018. *Basic Report 2015/16 Kenya Integrated Household Budget Survey*. Kenya National Bureau of Statistics.
- Lee, S., Choi, Y., Jeong, H.S., Lee, J., Sung, J., 2018. Effect of different cooking methods on the content of vitamins and true retention in selected vegetables. *Food Sci. Biotechnol.* 27, 333–342. <https://doi.org/10.1007/s10068-017-0281-1>.
- Leys, C., Ley, C., Klein, O., Bernard, P., Licata, L., 2013. Detecting outliers: do not use standard deviation around the mean, use absolute deviation around the median. *J. Exp. Soc. Psychol.* 49, 764–766. <https://doi.org/10.1016/j.jesp.2013.03.013>.
- Longvah, T., Ananthan, R., Bhaskarachary, K., Venkaiah, K., 2017. *Indian Food Composition Tables*. National Institute of Nutrition, Indian Council of Medical Research, Department of Health Research, Ministry of Health and Family Welfare, Government of India.
- Micha, R., Coates, J., Leclercq, C., Charrondiere, U.R., Mozaffarian, D., 2018. Global dietary surveillance: data gaps and challenges. *Food Nutr. Bull.* 39, 175–205. <https://doi.org/10.1177/0379572117752986>.
- Moltedo, A., Troubat, N., Lokshin, M., Sajaia, Z., 2014. Analyzing Food Security Using Household Survey Data: Streamlined Analysis with ADePT Software. World Bank, Washington (DC). <https://doi.org/10.1596/978-1-4648-0133-4>.
- Moltedo, A., Álvarez-Sánchez, C., Troubat, N., Cafiero, C., 2018. *Optimizing the Use of ADePT-Food Security Module for Nutrient Analysis: ADePT-FSM Version 3*. Rome (Italy).
- Muhimbili University of Health and Allied Sciences, 2008. *Tanzania food and nutrition center, harvard school of public health. Tanzania Food Composition Tables, 1st ed.* MUHAS- TFNC, HSPH, Dar es Salaam.
- Murphy, E.W., Criner, P.E., Gray, B.C., 1975. Comparisons of methods for calculating retentions of nutrients in cooked foods. *J. Agric. Food Chem.* 23, 1153–1157. <https://doi.org/10.1021/jf60202a021>.
- Rawal, V., Bansal, V., Bansal, P., 2019. Prevalence of Undernourishment in Indian States Explorations Based Data, NSS 68th Round [WWW Document]. *Econ. Polit. Wkly.* URL <https://www.epw.in/journal/2019/15/special-articles/prevalence-undernourishment-indian-states.html> (Accessed 2.19.21).
- Rippin, H.L., Hutchinson, J., Evans, C.E.L., Jewell, J., Breda, J.J., Cade, J.E., 2018. National nutrition surveys in Europe: a review on the current status in the 53 countries of the WHO European region. *Food Nutr. Res.* 62 <https://doi.org/10.29219/fnr.v62.1362>. <https://doi.org/10.29219/fnr.v62.1362>.
- Russell, J., Lechner, A., Hanich, Q., Delisle, A., Campbell, B., Charlton, K., 2018. Assessing food security using household consumption expenditure surveys (HCES): a scoping literature review. *Public Health Nutr.* 21, 2200–2210. <https://doi.org/10.1017/S136898001800068X>.
- Smith, L.C., Subandoro, A., 2007. *Measuring Food Security Using Household Expenditure Surveys, Food Security in Practice Technical Guide Series*. International Food Policy Research Institute (IFPRI), Washington D.C. <https://doi.org/10.2499/0896297675>.
- Smith, L.C., Dupriez, O., Troubat, N., 2014. Assessment of the Reliability and Relevance of the Food Data Collected in National Household Consumption and Expenditure Surveys (No. 008).
- Sununtmasuk, C., Fiedler, J.L., 2017. Can household-based food consumption surveys be used to make inferences about nutrient intakes and inadequacies? A Bangladesh case study. *J. Food Policy* 72, 121–131. <https://doi.org/10.1016/j.foodpol.2017.08.018>.
- Technical University of Denmark National Food Institute, 2016. *Database Frida Food Data (version 2) [WWW Document]*. URL <https://frida.fooddata.dk/disclaimer?language=en> (accessed 5.1.19).
- U.S. Department of Agriculture Agricultural Research Service, 2019. *Food Data Central [WWW Document]*. URL <https://fdc.nal.usda.gov/> (accessed 5.3.20).
- Vásquez-Cacedo, A.L., Bell, S., Hartmann, B., 2019. Report ON Collection of Rules on Use of Recipe Calculation Procedures Including the Use of Yield And Retention Factors for Imputing Nutrient Values for Composite Foods. *European Food Information Resource*.
- Vincent, A., Grande, F., Compaoré, E., Amponsah Annor, G., Addy, P.A., Aburime, L.C., Ahmed, D., Bih Loh, A.M., Dahdouh Cabia, S., Deflache, N., Dembélé, F.M., Dieudonné, B., Edwige, O.B., Ene-Obong, H.N., Fanou Fogny, N., Ferreira, M., Omaghomi Jemide, J., Kouebou, P.C., Muller, C., Nájera Espinosa, S., Ouattara, F., Rittenschöber, D., Schönfeldt, H., Stadlmayr, B., van Deventer, M., Razikou Yiagnigni, A., Charrondière, U.R., 2020. *FAO/INFOODS Food Composition Table for Western Africa (2019) User Guide & Condensed Food Composition Table*. FAO, Rome (Italy).
- Walker, E., Nowacki, A.S., 2011. Understanding equivalence and noninferiority testing. *J. Gen. Intern. Med.* 26, 192–196. <https://doi.org/10.1007/s11606-010-1513-8>.
- World Health Organization, 2015. *European Food and Nutrition Action Plan 2015–2020*. World Health Organization, Copenhagen.
- Zhang, L., Geelen, A., Boshuizen, H.C., Ferreira, J., Ocké, M.C., 2019. Importance of details in food descriptions in estimating population nutrient intake distributions. *Nutr. J.* 18, 17. <https://doi.org/10.1186/s12937-019-0443-5>.