

## ORIGINAL RESEARCH ARTICLE

AQ2

# Platelet Serotonin Aggravates Myocardial Ischemia/Reperfusion Injury via Neutrophil Degranulation

**BACKGROUND:** Platelets store large amounts of serotonin that they release during thrombus formation or acute inflammation. This facilitates hemostasis and modulates the inflammatory response.

**METHODS:** Infarct size, heart function, and inflammatory cell composition were analyzed in mouse models of myocardial reperfusion injury with genetic and pharmacological depletion of platelet serotonin. These studies were complemented by in vitro serotonin stimulation assays of platelets and leukocytes in mice and men, and by measuring plasma serotonin levels and leukocyte activation in patients with acute coronary syndrome.

**RESULTS:** Platelet-derived serotonin induced neutrophil degranulation with release of myeloperoxidase and hydrogen peroxide (H<sub>2</sub>O<sub>2</sub>) and increased expression of membrane-bound leukocyte adhesion molecule CD11b, leading to enhanced inflammation in the infarct area and reduced myocardial salvage. In patients hospitalized with acute coronary syndrome, plasmatic serotonin levels correlated with CD11b expression on neutrophils and myeloperoxidase plasma levels. Long-term serotonin reuptake inhibition—reported to protect patients with depression from cardiovascular events—resulted in the depletion of platelet serotonin stores in mice. These mice displayed a reduction in neutrophil degranulation and preserved cardiac function. In line, patients with depression using serotonin reuptake inhibition, presented with suppressed levels of CD11b surface expression on neutrophils and lower myeloperoxidase levels in blood.

**CONCLUSIONS:** Taken together, we identify serotonin as a potent therapeutic target in neutrophil-dependent thromboinflammation during myocardial reperfusion injury.

Maximilian Mauler, PhD  
et al

AQ3

\*I.H. and D.D. contributed equally to this work.

**Key Words:** blood platelets  
 ■ inflammation ■ integrins  
 ■ neutrophils ■ reperfusion injury  
 ■ reactive oxygen species ■ serotonin

AQ4

Sources of Funding, see page XXX

© 2018 American Heart Association, Inc.

<https://www.ahajournals.org/journal/circ>

## Clinical Perspective

### What Is New?

- Markers of neutrophil degranulation correlate with plasmatic serotonin levels in acute coronary syndrome patients.
- Neutrophils express serotonin receptors 5HT4 and 5HT7.
- Platelet-derived serotonin triggers neutrophil degranulation.
- Genetic or pharmacological depletion of serotonin in platelets protects from myocardial ischemia and reperfusion injury.

### What Are the Clinical Implications?

- Platelet-derived serotonin stimulating neutrophil infiltration, degranulation, and oxidative burst represents a druggable target to mitigate the inflammatory burden in myocardial ischemia and reperfusion injury.
- Inhibiting serotonin uptake into platelets of patients treated for depression reduced neutrophil degranulation even under otherwise healthy conditions, indicating that the platelet serotonin–neutrophil axis is of relevance to humans and modifiable.

Immediate restoration of blood flow by coronary intervention improves the survival of patients with myocardial infarction (MI). Targeting the deleterious processes during subsequent reperfusion injury holds the promise of further reducing the final infarct size and hence limiting heart failure in survivors.<sup>1</sup> The initial phase of reperfusion is characterized by ionic imbalance and distortion of the Na<sup>+</sup>/Ca<sup>2+</sup> and Na<sup>+</sup>/H<sup>+</sup> exchangers, leading to mitochondrial damage and hypercontraction of the myocardium.<sup>2,3</sup> Microembolization, production of reactive oxygen species, and instability of vessel wall integrity further threaten myocardial recovery.<sup>4</sup> Finally, excessive leukocyte recruitment into the affected myocardium occurs in the early hours after reperfusion (neutrophils are the predominant invaders during the first 24 hours).<sup>5</sup> The effect of neutrophil infiltration on outcome appears to follow a U-shaped curve with an optimum of modest neutrophil recruitment benefiting postinfarction healing, while excessive infiltration is detrimental, because neutrophils aggravate reperfusion injury.<sup>6</sup>

Mitigating the excess of neutrophil infiltration may restrict reperfusion injury while maintaining the beneficial healing process.

For transmigration through the vessel wall into inflamed tissues, neutrophils interact with activated endothelial cells directly<sup>7</sup> or under the influence of platelet-mediated cell–cell communication.<sup>8</sup> Endothelial selectins mediate neutrophil tethering and rolling, followed by integrin-mediated firm cell adhesion that

allows for subsequent transmigration.<sup>9</sup> Interfering with selectin and integrin function reduced experimental myocardial reperfusion injury, illustrating the relevance of inflammatory cell recruitment and the potential of pharmacological intervention.<sup>10</sup>

We recently reported that platelet-derived serotonin (5-hydroxytryptamine, 5-HT) enhanced the recruitment of neutrophils to sites of acute inflammation and tissue damage.<sup>11</sup> However, the underlying mechanism remained elusive. In the context of MI and coronary intervention, observational studies proposed that the depletion of platelet serotonin stores by long-term administration of serotonin reuptake inhibitors (a side-effect of many antidepressants) may improve outcome after MI and vasomotion post percutaneous coronary intervention (PCI).<sup>12</sup>

We hypothesized that platelet serotonin aggravates myocardial reperfusion injury by promoting excessive neutrophil recruitment.

Indeed, serotonin induced exocytosis of neutrophil granules, thereby increasing the surface expression of the  $\beta$ 2-integrin CD11b, mediating cell adhesion to platelets and the endothelium, and releasing myeloperoxidase (MPO) and hydrogen peroxide (H<sub>2</sub>O<sub>2</sub>), which altogether impaired healing after myocardial infarction.<sup>13</sup>

## METHODS

The data, analytic methods, and study materials will be made available to other researchers for purposes of reproducing the results or replicating the procedure. All data, methods, materials are available on personal request at the Department of Cardiology and Angiology I, Heart Center, University of Freiburg (contact: daniel.duerschmied@universitaets-herzzentrum.de).

A detailed section of all used methods is available in the online version of this manuscript.

## Animals

Ten to 12-week-old tryptophan hydroxylase-1-deficient (*Tph1<sup>-/-</sup>*) mice were kindly provided by Michael Bader from the Max-Delbrück-Center for Molecular Medicine (Berlin, Germany). Wild type (WT) littermates of heterozygous breeding were on a C57BL/6 N background. All mice were housed in the local animal facility. All experiments were conducted strictly according to the German animal protection law and in accordance with good animal practice as defined by the Federation of Laboratory Animal Science Associations ([www.felasa.eu](http://www.felasa.eu)) and the national animal welfare body GV-SOLAS ([www.gv-solas.de](http://www.gv-solas.de)). The examinations undertaken in this study were approved by the federal authorities in Freiburg and the Institutional Review Board.

## Murine Model of Myocardial Ischemia Reperfusion

All surgeries were performed between 10 AM and 2 PM to avoid circadian rhythm-associated irregularities according to recently published guidelines for experimental models of myocardial ischemia and infarction.<sup>14</sup> Briefly, WT and

*Tph1*<sup>-/-</sup> mice were anesthetized by intraperitoneally injection of 80 mg/kg ketamine (Ketavet; Pfizer Pharmacia, Berlin, Germany) and 4,8 mg/kg xylazine (Rompun; Bayer Vital, Leverkusen, Germany). Analgesia was provided by subcutaneous injection of 125 µg/kg buprenorphine. To avoid dehydration, 500 µL warm 0.9% NaCl (9 mg/mL) containing 5% glucose (G5; B.Braun Melsungen, Melsungen, Germany) was injected intraperitoneally. Mice were placed on a heating pad to maintain body temperature at 37°C. The operation table was tilted 20% to allow visualization of the vocal cords and mice were intubated under sight. Ventilation was set to a maximal end-inspiratory pressure of 10 cm H<sub>2</sub>O, at a respiratory rate of 110 breaths per minute, and an inspiration/expiration ratio of 1/1.5 with a small-animal respirator (TSE Systems, Bad Homburg, Germany). Oxygen saturation, heart rate, and respiratory rate were monitored throughout the procedure by a MouseOX system (Starr Life Sciences, Oakmont, Pennsylvania). Anesthesia was maintained by addition of 1.2% isoflurane (Abbott, Wiesbaden, Germany) during surgery. After right lateral positioning of the animal, left lateral thoracotomy was performed and the left anterior descending (LAD) coronary artery was identified. To induce ischemia an 8.0 nylon suture (Prolene; Ethicon, Norderstedt, Germany) was placed around the vessel and a loose loop was formed. A fine bore 0.61-mm polythene tube was placed on the LAD and the loop was tied. Ligation was visually confirmed by paling of the left ventricular anterior wall. The tube was removed after 30 minutes to allow reperfusion of myocardium indicated by a bright red color within the LAD. After evacuation of the pneumothorax chest and skin wounds were closed using a 6-0 Prolene suture (Ethicon, Norderstedt, Germany). Mice were monitored until spontaneous breathing occurred and placed under a heating lamp. A second dose of buprenorphine was administered 10 hours after surgery.

### Determination of Infarct Size

Hearts were excised 24 hours after surgery and placed in a petri dish containing 0.9% NaCl (B.Braun Melsungen, Melsungen, Germany) solution; the aorta was cannulated using a 22-gauge safety intravenous catheter with injection port (Vasofix Safety; B.Braun Melsungen, Melsungen, Germany) and fixated using a 6-0 Prolene suture. Ligation was reestablished by placing a polythene tube under the existing knot. Hearts were perfused with warm NaCl to remove any blood residues for 5 minutes by gravity flow. Then, 200 µL 5% MONOLITE Blue (Heubach, Langelsheim, Germany) diluted in 0.9% NaCl containing household detergent was injected into the system via a 3-way cock to visualize affected myocardium. Hearts were frozen at -20°C for 10 minutes afterward and cut in 5 to 7 1-mm sections using a cold razor blade. Slices were put in phosphate buffer (0.2 mol/L Na<sub>2</sub>HPO<sub>4</sub> / 0.2 mol/L NaH<sub>2</sub>PO<sub>4</sub>, adjusted to pH 7.4) containing 1% triphenyltetrazolium chloride (Sigma-Aldrich Chemie, Steinheim, Germany) and incubated in a water bath set to 37°C for 15 minutes. Necrotic tissue appeared white and healthy myocardium was stained red. Heart sections were placed on a cover slip, embedded with 5% agarose and covered with a second slip. Slices were photographed from both sides using an EOS 1000D camera (Canon Deutschland, Krefeld, Germany) under a Stemi 2000-C binocular (Carl Zeiss, Oberkochen, Germany).

Infarct size was calculated as the percentage of necrotic tissue in relation to nonmonolite blue area with ImageJ software.

### Echocardiography

Mice were anesthetized by 2% isoflurane and placed on a heating pad. Chest hair was removed using an electric shaver and animals were fixated on the back. Echocardiography loops were recorded in B and M modes in longitudinal and short axis views on a Vevo 3100 equipped with a MX550D transducer (both FUJIFILM VisualSonics, Inc., Toronto, Ontario, Canada). Mice were fixed on a heated table and heart rate was monitored during the procedure. Systole and diastole were defined based on concomitant electrocardiography (ECG) recordings. The end-systolic time point for left ventricular (LV) diameter measurement was defined as the maximum of ventricle contraction just before complete closure of the aortic valve. End-diastole was defined as the maximum of LV dilation and filling just before mitral valve closing (when visible) and aortic valve opening. LV ejection fraction (LVEF) was determined by LV tracing relating end systolic LV area as the minimal LV cross-sectional area to end-diastolic LV area as the maximum LV cross-sectional area in long axis views. Fractional shortening (FS) was assessed from short axis M-mode using VevoLab software (FUJIFILM VisualSonics).

### Quantitative Real-Time Polymerase Chain Reaction

Quantitative real-time polymerase chain reaction was performed using TaqMan Fast Advanced Master Mix (Thermo Fisher Scientific, Braunschweig, Germany) or IQ SYBR Green Supermix (Bio-Rad Laboratories, München, Germany) on a C1000 Touch Thermal Cycler (Bio-Rad Laboratories). Samples were amplified using an overview of used Taqman probes (Table I in the online-only Data Supplement) or oligonucleotides (Table II in the online-only Data Supplement). Data were statistically analyzed using the 2<sup>-ΔΔCt</sup> method.

### Flow Cytometry

#### Murine Blood Samples

Blood from WT and *Tph1*<sup>-/-</sup> mice was obtained by cardiac puncture using a 30-gauge needle coated with unfractionated heparin (B. Braun Melsungen, Melsungen, Germany). Then, 10 µL were incubated with 190 µL lysis buffer (BD Bioscience, Heidelberg, Germany) for 5 minutes and leukocytes were counted in a Neubauer chamber. Blood was immediately transferred to an Eppendorf tube containing 1.5 µg/µL enoxaparin (Sanofi Aventis, Frankfurt, Germany) in 50 µL PBS containing 0.9 mmol/L calcium, 0.5 mmol/L magnesium, and 0.1% BSA (PBS+/-, BSA). For in vitro stimulation, blood was incubated with either vehicle, or 100 µmol/L 5-hydroxytryptamine (5-HT, serotonin; Sigma-Aldrich CHEMIE, Steinheim, Germany) for 15 minutes, as previously described.<sup>15-18</sup> Platelet rich plasma (PRP) was prepared as described above. Samples were diluted 1:6 in 37°C warm PBS. Ninety microliters diluted blood or PRP was mixed with 10 µL antibody mix and incubated for 15 minutes in the dark at room temperature. Stained whole blood samples were mixed gently with 400 µL 37°C

warm 1X Phosflow Lyse/Fix buffer (BD Bioscience, Heidelberg, Germany) and incubated for 30 minutes at room temperature. Intracellular analysis was performed using Fixation/Permeabilization Solution Kit (BD Bioscience, Heidelberg, Germany) according to suppliers protocol. Data were acquired on a BD FACSCanto II and analyzed with FlowJo v10 software (Tree Star, Ashland, Oregon).

To evaluate leukocyte subsets, platelet neutrophil complexes, integrin, and selectin expression after 24 hours of reperfusion, the following antibodies were used in 1:16 dilution in PBS+/, BSA: anti-CD41-PECy7 (clone MWRReg30), anti-CD42d-PerCPy5.5 (clone 1C2), anti-CD45.2-AmCyan (clone 104), anti-CD45.2-PacificBlue (clone 104), anti-CD115-APC (clone CSF-1R), anti-F4/80-PE (clone BM8), anti-CD182-FITC (clone SA045E1), anti-CD3-FITC (clone 145-2C11), anti-CD19-PECy7 (clone 1D3), anti-Ly6C-PerCPy5.5 (clone HK 1.4), anti-CD11a/CD18-PerCPy5.5, (clone H155-78; all BioLegend, Fell, Germany), anti-CD62P-PacificBlue (clone RB40.34), anti-CD11b-APCCy7 (clone M1/70), anti-CD162-PacificBlue (clone 2PH1), anti-Ly6G-PE (clone 1A8; all Becton Dickinson, Heidelberg, Germany), anti-GPIIb/IIIa (clone JON/A) anti-GPVI-FITC (clone JAQ1, all EMFRET Analytics, Eibelstadt, Germany), anti-Ly6G(Gr1)-PECy7 (clone RB6-8C5) and anti-CD62L-APC (clone MEL-14; both eBioscience, Frankfurt, Germany).

### Human Blood Samples

Whole blood from healthy volunteers, depressed patients, and patients suffering from acute coronary syndrome (ACS) was obtained by peripheral venous puncture. Blood was drawn from ACS patients on the day after percutaneous intervention. ACS patients and patients with depression gave written informed consent as approved by the Institutional Review Board of the University Hospital of Freiburg: 287/12, and 18/11\_160618, respectively. In a separate experiment, neutrophils of healthy volunteers were isolated from whole blood using Polymorphprep (Axis-Shield, Rodelokka, Norway) according to manufacturer's protocol. For in vitro stimulation blood was incubated with either vehicle, or 100  $\mu\text{mol/L}$  5-hydroxytryptamine for 15 minutes at room temperature. For receptor blocking experiments blood was incubated with 100  $\mu\text{mol/L}$  of a 5-HT receptor antagonist (5HTR<sub>4</sub>: SB207266; 5HTR<sub>7</sub>: SB269970; both Sigma-Aldrich Chemie, Steinheim, Germany) before stimulation. Blood was diluted 1:6 in warm FACS buffer and 90  $\mu\text{L}$  were stained with 10  $\mu\text{L}$  antibody mix and incubated for 15 minutes in the dark at room temperature. Stained whole blood samples were mixed gently with 400  $\mu\text{L}$  37°C warm 1X Phosflow Lyse/Fix buffer (BD Bioscience, Heidelberg, Germany) and incubated for 30 minutes at room temperature. Data were acquired on a BD FACSCanto II and analyzed with FlowJo v10 software. Antibody mix to analyze platelet neutrophil complex (PNC) content, integrin, and selectin expression contained 1:16 dilution of the following monoclonal antibodies in PBS+/, BSA: anti-CD41-PECy7 (clone HIP8), anti-CD45-APCCy7 (clone HI30), anti-CD66b-PerCPy5.5 (clone G10F5), anti-CD182-APC (clone 5E8/CXCR2), anti-CD162-PE (clone KPL-1), anti-CD11a/CD18-AlexaFluor 488 (clone m24), anti-CD62L-BrilliantViolet 421 (clone DREG-56), anti-CD11a-PECy7 (clone HI111), and anti-CD11b-AlexaFluor 488 (clone ICRF44; all BioLegend, Fell, Germany).

## Statistical Analysis

Experimental results are presented as mean values  $\pm$  SEM. One-way ANOVA with post hoc Tukey multiple comparisons test was performed when comparing >2 groups. Two-way ANOVA with Bonferroni multiple comparisons testing was used when more than 2 groups and variables were compared. Repeated measures ANOVA was used when the observations were not independent. Paired *t* test was used when samples were split and analyzed under various conditions. Pearson correlation analysis, Fisher exact test, Mann-Whitney U test or Student *t* test were used as indicated. *P* values from multiple *t* tests were adjusted using the Holm-Sidak method. Adjusted *P* values of  $\leq 0.05$  denote significant changes. Statistics were calculated using GraphPad Software.

## RESULTS

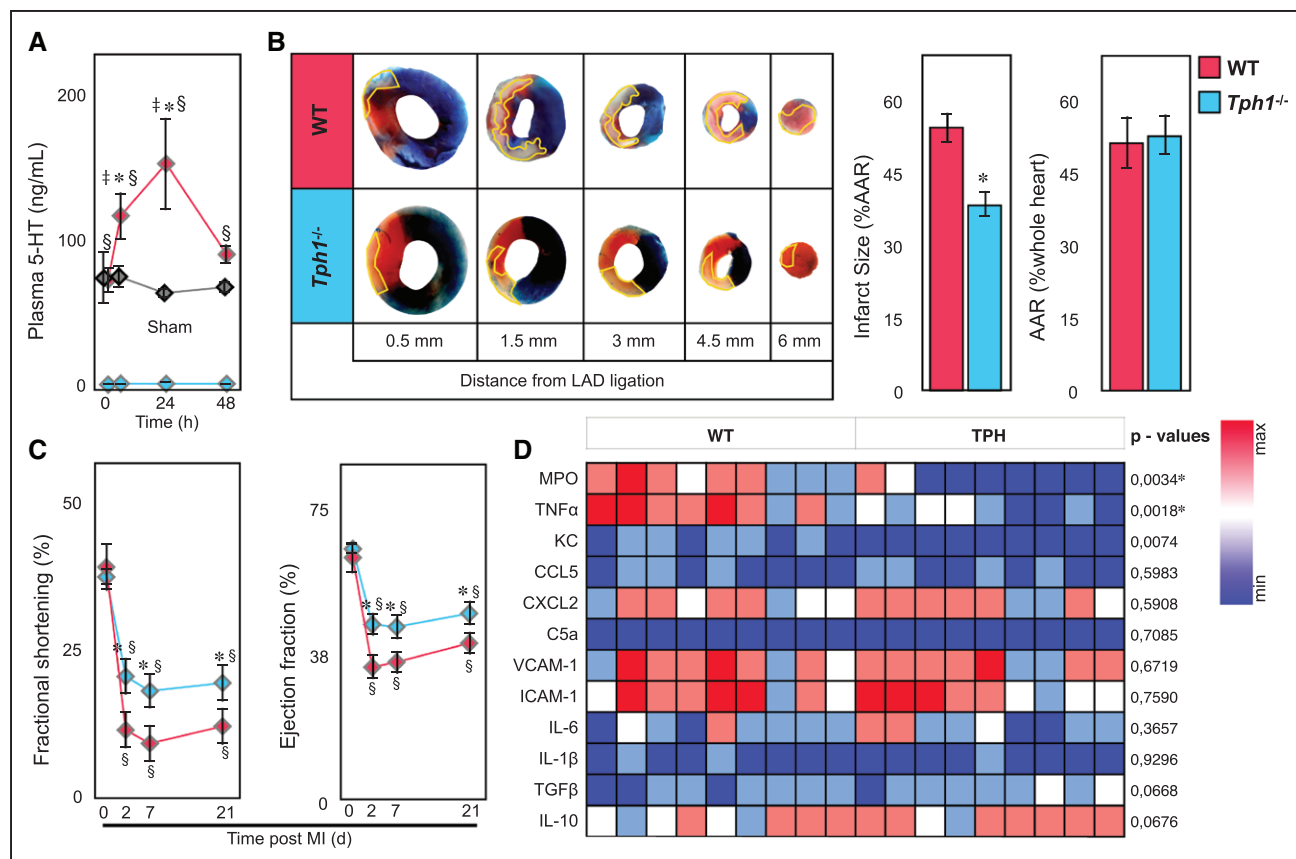
### Platelet Serotonin Aggravated Myocardial Ischemia and Reperfusion Injury

Myocardial infarction was induced by temporary coronary artery ligation in mice. At baseline serotonin plasma levels were low ( $73.5 \pm 8.7$  ng/mL), but surged within 24 hours after 30 minutes of myocardial ischemia with subsequent reperfusion in WT mice ( $153.3 \pm 31.3$  ng/mL\*<sup>AQ7</sup>; Figure 1A). In blood, serotonin is stored in platelets at millimolar concentrations and is quickly released on their activation, which raises serotonin levels from nanomolar (in resting plasma) to micromolar concentrations (locally in vivo during thrombosis or inflammation or in vitro in serum preparations).<sup>19,20</sup> Tryptophan hydroxylase-1-deficient mice (*Tph1*<sup>-/-</sup>) are devoid of serotonin in blood, and platelets in particular, while serotonin levels in the central nervous system remain unaffected<sup>21</sup> (Figure 1A). When *Tph1*<sup>-/-</sup> mice were subjected to myocardial ischemia with reperfusion, the infarct size was significantly reduced by about 35% compared to WT controls ( $36.4 \pm 2.4$  versus  $55.3 \pm 3.2\%$  area at risk [AAR]\*<sup>F1</sup>; Figure 1B). In line, echocardiography documented less compromised left ventricular (LV) function early on and up to 3 weeks post-MI in *Tph1*<sup>-/-</sup> mice (~40% relative preservation of ejection fraction on d2 and 25% improved ejection fraction on d7\*<sup>AQ8</sup>; Figure 1C; Table III in online-only Data Supplement). Moreover, inflammatory gene expression of MPO ( $-65.3 \pm 19\%$ ), tumor necrosis factor- $\alpha$  (TNF $\alpha$ ;  $-59.8 \pm 16\%$ ), and chemokine keratinocyte chemoattractant ( $-48.5 \pm 16\%$ ) were reduced in the infarcts of *Tph1*<sup>-/-</sup> mice. The changes were considered significant between groups for MPO and TNF $\alpha$  after multiple comparisons testing (Figure 1D; Table I in the online-only Data Supplement).

### Platelet Serotonin Promoted Myocardial Neutrophil Infiltration

Neutrophils have previously been recognized as decisive promoters of myocardial reperfusion injury.<sup>1,22</sup> We con-





**Figure 1. Myocardial reperfusion injury is dampened in  $Tph1^{-/-}$  mice.**

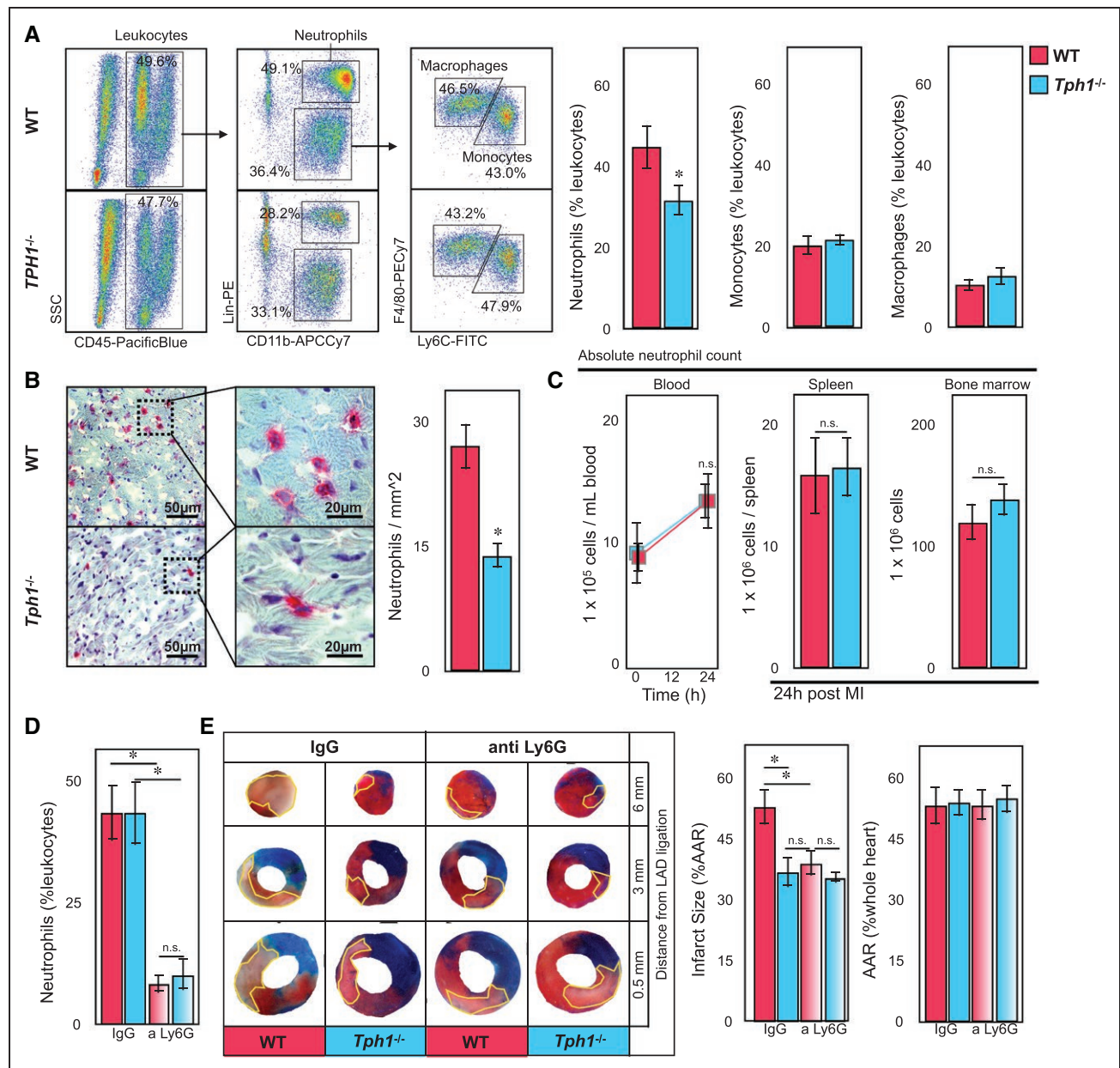
**A**, Plasma serotonin levels in wild-type (WT; red) and  $Tph1^{-/-}$  (blue) before, and 6, 24, and 48 hours after myocardial infarction with reperfusion. Values in sham (thoracotomy was performed without ligation of the left anterior descending [LAD] operated WT mice) are shown in grey. Results are presented as mean $\pm$ SEM, \* $P$ <0.05 indicates significant changes compared with time point 0 hours within groups,  $^{\S}P$ <0.05 indicates significant changes between WT and  $Tph1^{-/-}$  mice, and  $^{\dagger}P$ <0.05 between WT and Sham, 2-way ANOVA with Bonferroni multiple comparisons testing,  $n \geq 6$  independent animals per group and time point. **B**, Representative images of heart sections of WT and  $Tph1^{-/-}$  mice after 30 minutes of LAD ligation with 24 hours of reperfusion at increasing distance from the site of ligation. The infarct area (white tissue) is circumscribed in yellow and quantified as percentage of area at risk (AAR; nonblue tissue). The AAR is presented as percentage of the entire heart section. Viable tissue within the AAR was stained in red. Results are presented as mean $\pm$ SEM. \* $P$ <0.05, Student  $t$  test,  $n \geq 10$  per group, WT (red) and  $Tph1^{-/-}$  (blue). **C**, Time course of fractional shortening (FS) and left ventricular ejection fraction of WT and  $Tph1^{-/-}$  mice recorded under baseline (d0) conditions and repetitively over 3 weeks (at day 2, 7, and 21) after myocardial infarction with reperfusion. Results are presented as mean $\pm$ SEM.  $^{\dagger}P$ <0.05, \* indicates significant changes between different genotypes,  $^{\S}$  indicates significance compared with d0 within groups. Two-way repeated measures ANOVA with Bonferroni multiple comparison testing,  $n=8$  per group, WT (red) and  $Tph1^{-/-}$  (blue). **D**, Expression of pro- and anti-inflammatory target genes in homogenized heart tissue after I/R injury. Results are presented in a heat map depicting  $2^{-\Delta\Delta C_t}$  values,  $n=9$  per group, each column represents 1 WT or  $Tph1^{-/-}$  mouse.  $P$  values were derived from comparison of respective  $2^{-\Delta\Delta C_t}$  values by unpaired  $t$  tests, and asterisks denote significant differences according to correction for multiple comparisons using the Holm-Sidak method.

firmly that neutrophils were the most abundant immune cell population within the left ventricle at 24 hours post-infarction (44.8 $\pm$ 5.4% of leukocytes in WT controls $^{\dagger}$ ; Figure 2A). Coinciding with reduced infarct size, we found fewer neutrophils within the infarcted tissue of  $Tph1^{-/-}$  mice as compared to WT controls (13.9 $\pm$ 1.5 versus 27.1 $\pm$ 2.7 per mm $^2$  infarct area $^{\dagger}$ ; Figure 2A and 2B) while their numbers in the blood, spleen, and bone marrow did not differ significantly (Figure 2C). Monocyte counts in the infarct, blood, spleen and bone marrow were similar between the groups, pointing toward a mechanism that influenced neutrophil infiltration, in particular (Figure 2A; Figure I in the online-only Data Supplement). Indeed, neutrophil depletion protected WT mice from myocardial reperfusion injury (39.2 $\pm$ 3 versus 53.2 $\pm$ 4.2% AAR $^{\dagger}$ ; IgG treatment) to a similar extent as serotonin depletion in  $Tph1^{-/-}$  mice, and did not

alter the effects seen in  $Tph1^{-/-}$  mice (Figure 2D and 2E; Figure IF in the online-only Data Supplement). When hearts from WT and  $Tph1^{-/-}$  mice were perfused ex vivo in the absence of circulating leukocytes and subjected to myocardial ischemia with reperfusion, both loss in cardiac function and cardiomyocyte viability were comparable in both groups (Figure II in the online-only Data Supplement). We concluded that the deleterious effects of platelet serotonin on myocardial reperfusion injury mainly depended on neutrophil influx.

### Serotonin Increased Integrin Alpha-M Surface Expression on Neutrophils

Platelets can directly interact with neutrophils to form complexes. $^{23,24}$  PNC formation in blood and heart doubled in WT mice 24 hours after myocardial reperfusion



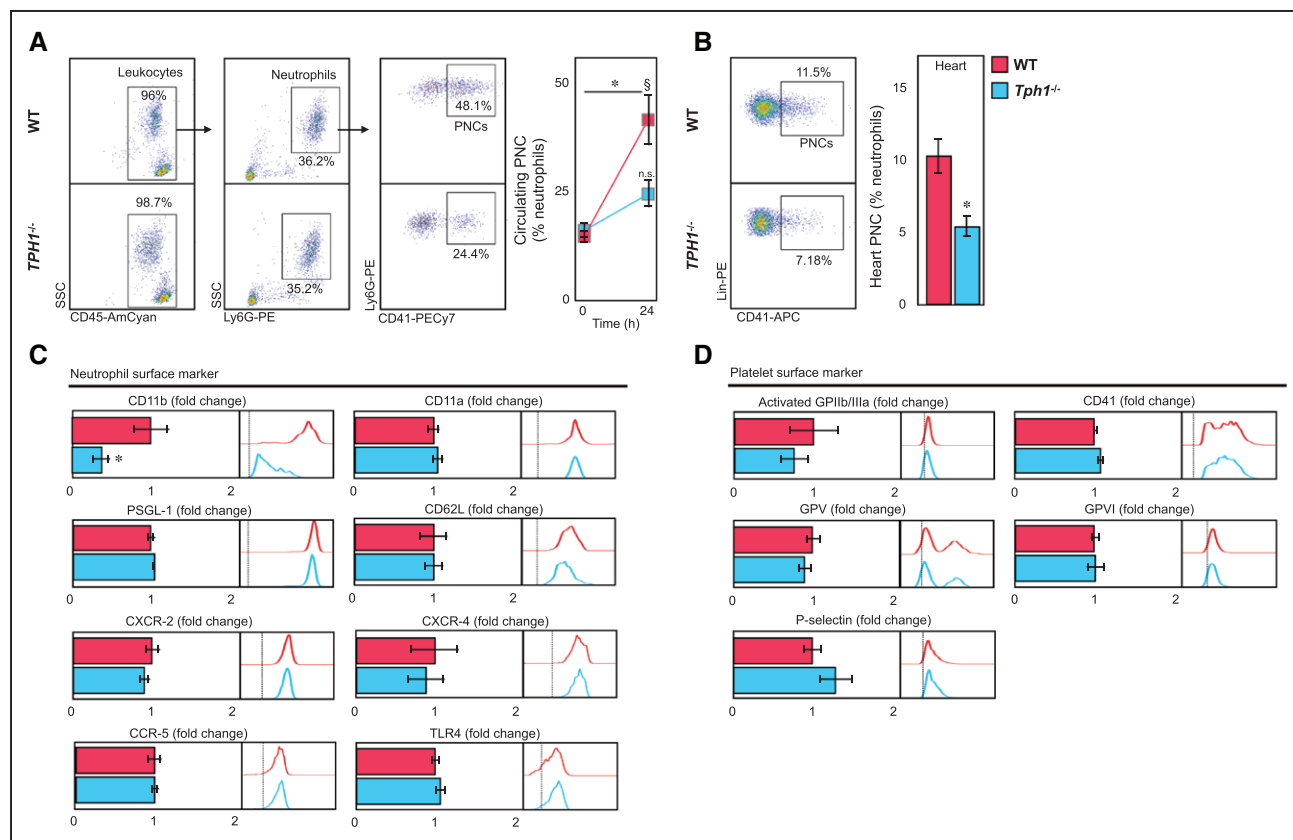
**Figure 2. Reduced neutrophil accumulation in hearts of *Tph1*<sup>-/-</sup> mice after myocardial ischemia and reperfusion (I/R) injury.**

**A**, Representative flow cytometric dot plots of digested cardiac tissues of wild-type (WT) and *Tph1*<sup>-/-</sup> mice 24 hours after myocardial ischemia and subsequent reperfusion (left). Quantification of neutrophils, monocytes, and macrophages in cardiac tissue of WT (red) and *Tph1*<sup>-/-</sup> (blue) mice 24 hours after myocardial I/R injury (right). Results are presented as mean percent of CD45.2<sup>+</sup> leukocytes  $\pm$  SEM, \* $P$ <0.05, Student  $t$  test,  $n \geq 7$  per group. **B**, Representative immunohistology of myocardial infarct tissue. Ly6G<sup>+</sup> neutrophils are stained in red (left panels) and quantified per mm<sup>2</sup> tissue section of WT (red) and *Tph1*<sup>-/-</sup> (blue) mice. Results are presented as mean  $\pm$  SEM, \* $P$ <0.05, Student  $t$  test,  $n \geq 9$  per group. **C**, Neutrophil counts of WT (red) and *Tph1*<sup>-/-</sup> (blue) mice in blood before, and in blood, spleen, and bone marrow after myocardial I/R injury. Results are presented as mean  $\pm$  SEM, n.s., 2-way ANOVA with Bonferroni multiple comparison testing was used for blood samples, Student  $t$  test was used for spleen and bone marrow,  $n=6$  independent animals per group and time point. **D**, Quantification of blood neutrophils after depletion with anti-Ly6G versus IgG control. Results are presented as mean  $\pm$  SEM. \* $P$ <0.05, 2-way ANOVA with Bonferroni multiple comparison testing,  $n=6$  per group, WT (red) and *Tph1*<sup>-/-</sup> (blue). **E**, Representative images of heart sections of WT and *Tph1*<sup>-/-</sup> mice after 30 minutes of left anterior descending ligation followed by 24 hours of reperfusion at increasing distance from the site of ligation. The infarct area (white tissue) is circumscribed in yellow and quantified as percentage of area at risk (AAR; nonblue tissue). The AAR is presented as percentage of the entire heart section. Viable tissue within the AAR was stained in red. Results are presented as mean  $\pm$  SEM. \* $P$ <0.05, 2-way ANOVA with Bonferroni multiple comparison testing,  $n=6$  per group, WT (red) and *Tph1*<sup>-/-</sup> (blue).

injury but remained low in *Tph1*<sup>-/-</sup> mice (41.3 $\pm$ 5.8 versus 24.2 $\pm$ 3.1% blood neutrophils\*; 10.3 $\pm$ 1.2 versus 5.5 $\pm$ 0.7% MI tissue neutrophils\*; Figure 3A and 3B). Platelet monocyte complex formation however was similar in both groups (Figure IE in the online-only Data Supplement). Interestingly, surface expression of CD11b on

neutrophils was significantly increased in WT mice compared to *Tph1*<sup>-/-</sup> mice, with CD11b (integrin  $\alpha$ -M,  $\alpha$ -subunit of Mac-1) known to mediate leukocyte adhesion to endothelial cells and platelets<sup>19,25</sup> (Figure 3C; Figure IIIA in the online-only Data Supplement). Other neutrophil surface components such as CD11a (part

AQ9



**Figure 3. Platelet neutrophil complex formation is reduced in *Tph1*<sup>-/-</sup> mice after reperfusion injury.**

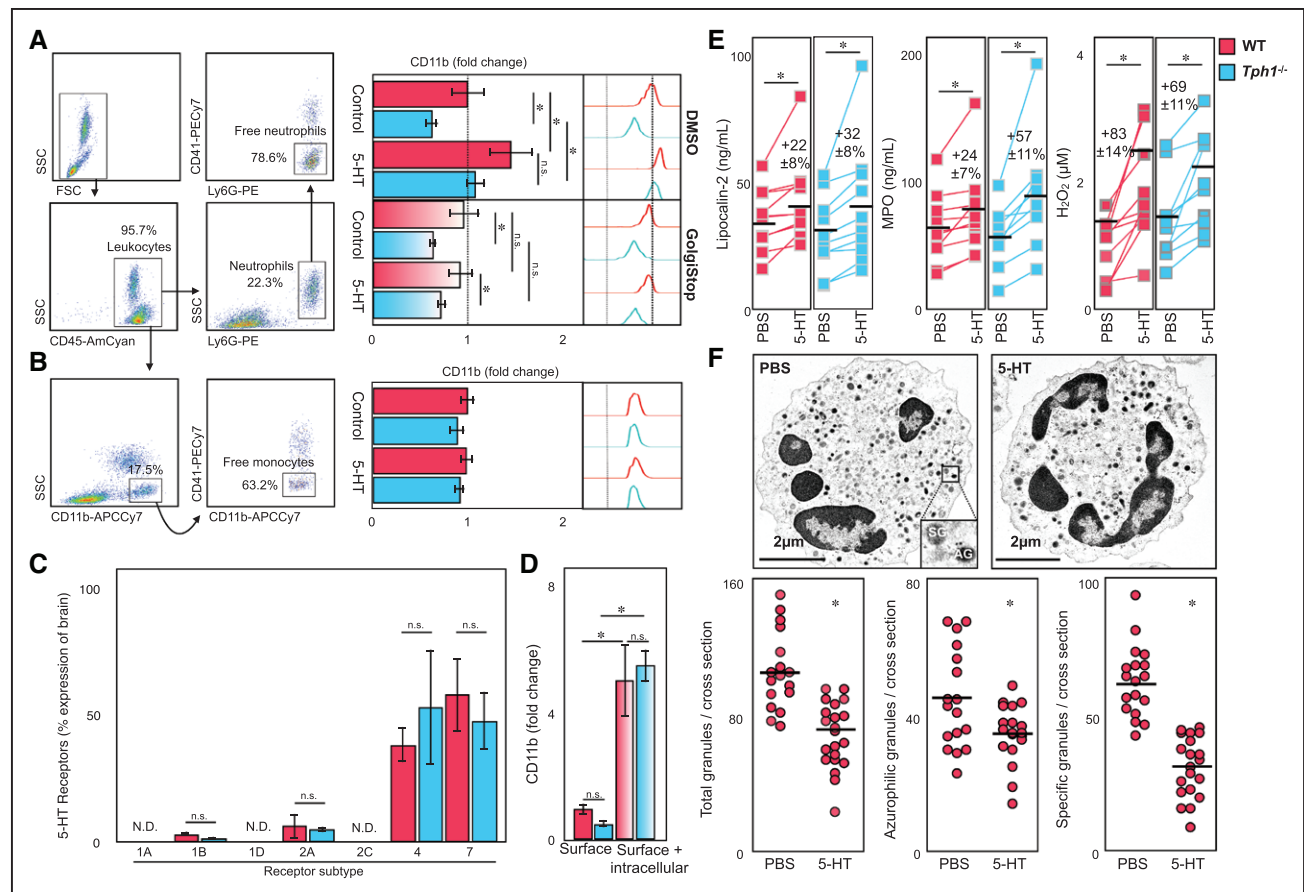
**A**, Representative dot plots displaying platelet neutrophil complexes (PNC) in blood of wild type (WT) and *Tph1*<sup>-/-</sup> mice (left panel). PNCs were quantified before and after 24 hours of reperfusion (right panel). Results are presented as mean±SEM, \**P*<0.05 comparing time points. §*P*<0.05 comparing groups, 2-way ANOVA with Bonferroni multiple comparison testing, n≥10 independent animals per group and time point, WT (red) and *Tph1*<sup>-/-</sup> (blue). **B**, Representative dot plots and quantification of PNCs within the AAR of WT (red) and *Tph1*<sup>-/-</sup> (blue) mice at 24 hours after myocardial ischemia with reperfusion. Results are presented as mean±SEM. \**P*<0.05, Student *t* test, n≥7 per group. **C**, Quantification of CD11b, CD11a, CXCR-2, CD62L, and PSGL-1 surface expression in PNC of WT (red) and *Tph1*<sup>-/-</sup> (blue) mice 24 hours after myocardial ischemia and reperfusion (I/R) injury. Results are presented as normalized mean±SEM. \**P*<0.05, Student *t* test, n=10 per group. **D**, Activated GPIIb/IIIa, GPV, GPVI, and P-selectin platelet marker expression in PNC of WT and *Tph1*<sup>-/-</sup> mice 24 hours after myocardial I/R injury. Results are presented as normalized mean±SEM. n.s., Student *t* test, n=10 per group. Bar graphs are accompanied by representative histograms of mean fluorescence intensities of respective markers.

of LFA-1), L-selectin (CD62L), P-selectin glycoprotein ligand 1 (PSGL-1), and chemokine receptors remained largely unaffected (Figure 3C; Figure IIIA in the online-only Data Supplement). Indeed, intravital microscopy of TNF $\alpha$  stimulated mesenteric venules revealed reduced numbers of adherent leukocytes in *Tph1*<sup>-/-</sup> mice (Figure IVA in the online-only Data Supplement) an effect limited to 5-HT mediated effects on neutrophils (Figure IVB in the online-only Data Supplement) while their migratory capacity appeared normal in vitro (Figure IVC in the online-only Data Supplement). Platelet surface marker expression in PNCs was similar in both groups (Figure 3D). Circulating platelets in *Tph1*<sup>-/-</sup> mice expressed lower levels of activated GPIIb/IIIa and GPV after myocardial infarction (Figure IIIB in the online-only Data Supplement), while in vitro stimulation of platelets with serotonin in the absence of costimulators had no significant effects on platelet activation marker expression and integrity (Figure VC in the online-only Data Supplement), supporting serotonin's role as a platelet coactivator that does not induce classical platelet activation without

additional stimuli.<sup>26</sup> In contrast, incubating blood neutrophils with serotonin selectively raised CD11b surface expression by approximately 40% (Figure 4A; Figure VA in the online-only Data Supplement).

## Serotonin-Induced Degranulation of Neutrophils

Neutrophil stimulation with serotonin increased CD11b surface expression both in WT and *Tph1*<sup>-/-</sup> mice, thereby normalizing CD11b levels in the knockout animals (Figure 4A). In contrast, CD11b surface expression in monocytes was similar in both groups before and after incubation with serotonin (Figure 4B). These observations pointed to a neutrophil-specific and inducible serotonin effect. Identification of several serotonin receptors, most notably subtype 4 and 7, on isolated neutrophils suggested that neutrophils were able to respond to serotonin, directly (Figure 4C; Table II in the online-only Data Supplement). Unlike monocytes, neutrophils carry intracellular granules that are shuttled to the surface



**Figure 4. Serotonin mediates degranulation of neutrophils in vitro.**

**A**, Representative dot plots displaying uncomplexed (free) neutrophils (SSC<sup>high</sup>, Ly6G<sup>+</sup>, CD41<sup>-</sup>) in blood (left). Quantification of neutrophil CD11b expression in wild-type (WT; red) and *Tph1*<sup>-/-</sup> (blue) mice on stimulation with PBS (control) or 100 μmol/L serotonin coincubated with DMSO or GolgiStop/Plug reagent (right). Results are presented as mean±SEM. \**P*<0.05, 2-way ANOVA with Bonferroni test, n≥12 per group. **B**, Dot plots of uncomplexed (free) monocytes (SSC<sup>low</sup>, CD41<sup>-</sup>) in blood (left) and quantification of CD11b expression after serotonin or PBS treatment (right). Results are presented as mean±SEM. \**P*<0.05, 2-way ANOVA with Bonferroni test, n≥12 per group, WT (red) and *Tph1*<sup>-/-</sup> (blue). **C**, Expression of different serotonin receptors in isolated neutrophils in WT (red) and *Tph1*<sup>-/-</sup> (blue) mice. Results are presented as normalized mean±SEM. n.s., Student *t* test, n=5 per group. **D**, Intracellular expression of CD11b in neutrophils compared to matched surface expression in blood of WT (red) and *Tph1*<sup>-/-</sup> (blue) mice. Results are presented as mean±SEM normalized to WT surface staining. \**P*<0.05 denotes significant changes between surface and intracellular staining, 2-way ANOVA for repeated measures with Bonferroni multiple comparison testing, n=5 per group. **E**, Plasma concentration of lipocalin-2, MPO, and H<sub>2</sub>O<sub>2</sub> in WT (red) and *Tph1*<sup>-/-</sup> (blue) blood after stimulation with either serotonin or PBS. Results are presented as normalized mean±SEM. \**P*<0.05, paired Student *t* test, n=9 per group. **F**, Electron microscopic images of neutrophils after treatment with serotonin or PBS (top). Quantification of azurophilic granules (AG) and specific granules (SG) per cross section after stimulation with serotonin (bottom). Results are presented as mean±SEM, \**P*<0.05, Student *t* test, n≥15 per treatment.

on stimulation. CD11b, but not CD11a, is stored in secretory granules alongside other neutrophil mediators such as lipocalin-2 and MPO.<sup>27</sup> Flow cytometric staining after membrane permeabilization documented that most of the neutrophil's CD11b was stored intracellularly. *Tph1*<sup>-/-</sup> mice showed similar total CD11b protein levels to those in wild type mice while CD11b surface expression was relatively reduced by trend (Figure 4D). These data suggested that serotonin engaged in granule release in neutrophils. Consequently, stimulation of cultured blood neutrophils with serotonin did not only increase CD11b surface expression but also lipocalin-2 and MPO levels in the supernatants (Figure 4E). We also detected a release of hydrogen peroxide (H<sub>2</sub>O<sub>2</sub>), a highly reactive oxidative burst product, on stimulation (Figure 4E). Conversely, inhibition of granule release by treatment with protein transport inhibitors brefeldin

A and monensin abolished the rise of CD11b in wild type and *Tph1*<sup>-/-</sup> mice (Figure 4A). Comparing electron microscopic images of neutrophils before and after stimulation with serotonin, we were able to visualize and quantify the disposal of azurophilic (45.9±3.9 versus 35.6±2.3\*) and specific granules (64.1±3.5 versus 35.2±4.8\*; Figure 4F). Taken together, our data indicate a critical role for platelet serotonin in the regulation of neutrophil degranulation.

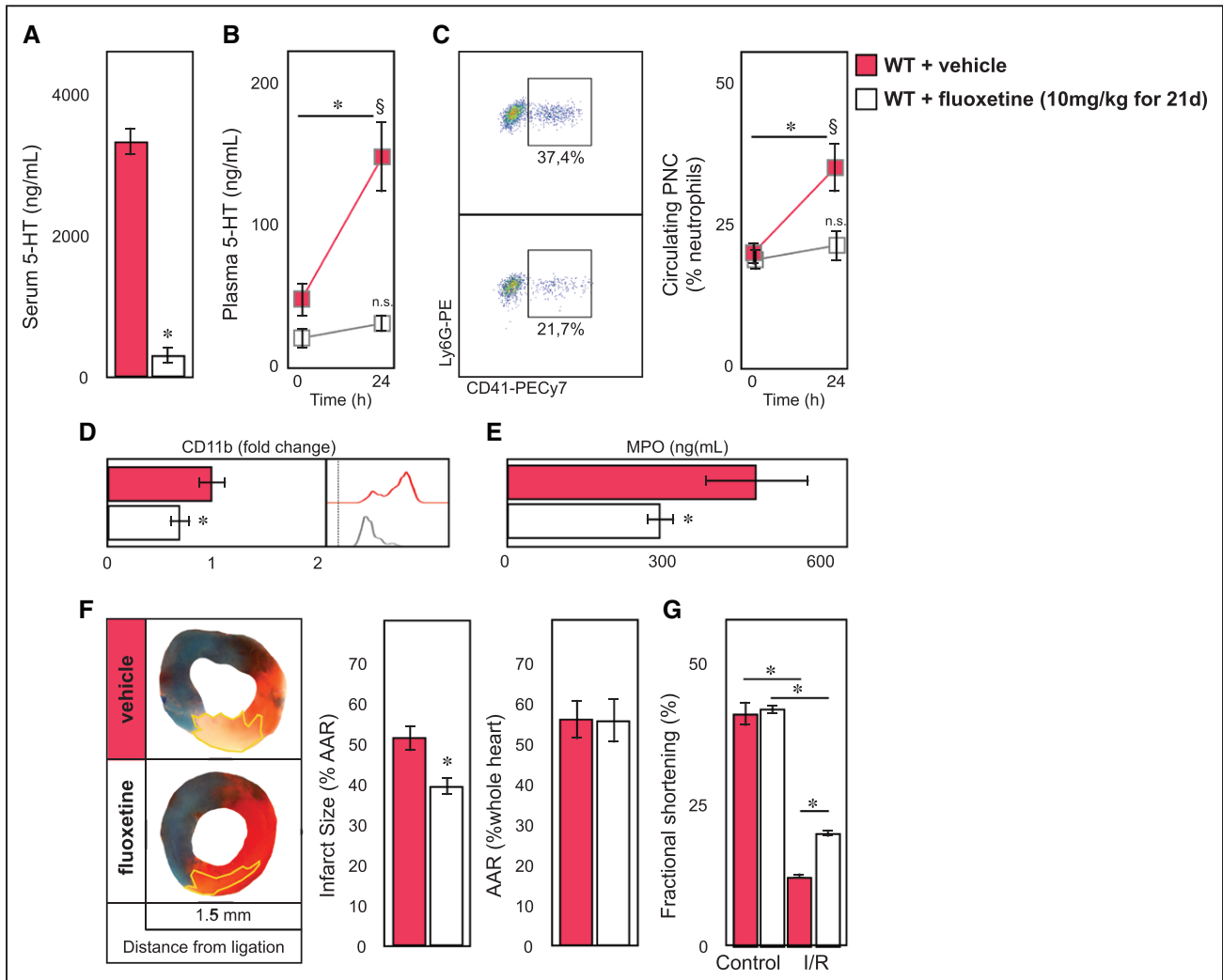
### Platelet Serotonin Depletion by Fluoxetine Protected From Myocardial Ischemia Reperfusion Injury

We wondered whether we could phenocopy our observations made in *Tph1*<sup>-/-</sup> mice by treating WT mice with the selective serotonin reuptake inhibitor (SSRI) fluox-



etine (Flx) for 3 weeks. The long-term SSRI treatment (mimicking SSRI treatment of patients with depression) resulted in a near complete depletion of serotonin stores in platelets (Figure 5A). Consequently, plasma serotonin remained at baseline in Flx treated mice even after myocardial ischemia with reperfusion (Figure 5B). Serotonin depletion resulted in a decreased PNC frequency with lower surface expression of CD11b on neutrophils, and reduced plasma MPO levels post MI (Figure 5D and 5E). Surface expression of CD11a and other adhesion molecules did not change and circulating platelets showed a decrease of activation markers with SSRI treatment sim-

ilar to that observed in *Tph1<sup>-/-</sup>* mice (Figure VIA and VIB in the online-only Data Supplement). Lastly, infarct size ( $39.9 \pm 1.9$  versus  $56.4 \pm 2.8\%$  AAR\*) and heart function ( $20.2 \pm 0.7$  versus  $12.6 \pm 0.5\%$  FS\*) improved with SSRI treatment (Figure 5F and 5G). P2Y12 inhibitors are routinely used in the acute treatment of MI and have been described to limit myocardial ischemia and reperfusion injury.<sup>28,29</sup> We tested whether this protection was at least partly mediated by preventing the release of serotonin from platelets during myocardial infarction (Figure VIIA in the online-only Data Supplement). While Flx treatment alone mildly reduced adenosine



**Figure 5. Pharmacological platelet serotonin depletion protects from myocardial ischemia-reperfusion injury.**

**A**, Three-week administration of fluoxetine (Flx) depletes platelet dense granule serotonin storage (indirectly assessed by freshly provoked serum). Results are presented as mean $\pm$ SEM. \* $P$ <0.05, Student  $t$  test,  $n=7$  per vehicle (red) or Flx (white) treatment. **B**, Plasma serotonin levels in vehicle (red) and Flx (white) before, and 24 hours after myocardial infarction with reperfusion. Results are presented as mean $\pm$ SEM. \* $P$ <0.05 comparing time points within groups,  $\S P$ <0.05 comparing groups, 2-way ANOVA with Bonferroni multiple comparison testing,  $n=7$  independent animals per treatment and time point. **C**, Representative dot plots of circulating platelet neutrophil complexes (PNC) in vehicle (red) and Flx (white)-treated mice (left) and quantification before and after 24 hours after myocardial ischemia and reperfusion (I/R) injury. Results are presented as mean $\pm$ SEM.  $P$ <0.05 comparing time points within groups,  $\S P$ <0.05 comparing groups, 2-way ANOVA with Bonferroni multiple comparison testing,  $n=7$  independent animals per treatment and time point. **D**, Quantification of CD11b surface expression in PNC and **(E)** plasma MPO levels of vehicle (red) and Flx (white)-treated mice 24 hours after myocardial ischemia and reperfusion. Results are presented as normalized mean $\pm$ SEM. \* $P$ <0.05, Student  $t$  test,  $n=7$  per group. **F**, Representative images of heart sections of vehicle and fluoxetine treated mice after 30 minutes of left anterior descending ligation with 24 hours of reperfusion. Infarcted area (white tissue) is circumscribed in yellow and quantified as percentage of area at risk (AAR; nonblue tissue). The AAR is presented as percentage of the entire heart section. Viable tissue within the AAR is stained in red. Results are presented as mean $\pm$ SEM. \* $P$ <0.05, Student  $t$  test,  $n=7$  per vehicle (red) and Flx (white) treatment. **G**, Left ventricular fractional shortening in vehicle (red) and Flx (white) treated mice after I/R injury. Results are presented as mean $\pm$ SEM. \* $P$ <0.05, 2-way ANOVA with Bonferroni test,  $n=7$  per group.

AQ12

diphosphate (ADP) stimulated platelet aggregation, ticagrelor administration blocked ADP effects completely and blunted platelet P-selectin externalization both in Flx and vehicle treated mice (Figure VIIB and VIIE in the online-only Data Supplement). Serotonin release, however, remained unaffected by ticagrelor (Figure VIIC in the online-only Data Supplement). In accord, ADP and many other platelet agonists except for thrombin and LPS failed to stimulate 5-HT release from platelets in vitro (Figure VIID in the online-only Data Supplement). In neutrophils, Flx or ticagrelor alone reduced CD11b surface expression to a similar extent. The combination of both drugs, however, reduced neutrophil CD11b expression and PNC formation by an additional 30% to 50%\* (Figure VIIF and VIIG in the online-only Data Supplement). Consequently, the complementary blockade of ADP-dependent platelet activation and serotonin release proved to reduce the infarct size even more effectively than either drug alone (Figure VIIH in the online-only Data Supplement).

### Plasma Serotonin Correlated With the Neutrophil Release of CD11b and MPO in ACS Patients

In accord with our findings in mice, human neutrophils showed strong upregulation of CD11b surface expression and elevated plasma MPO levels on stimulation with serotonin in vitro. These effects were reversed by blocking the 5HT receptor subtype 7, specifically (Figure 6A), and by vesicle transport inhibition (Figure VIIIA in the online-only Data Supplement). CD11b expression on neutrophils gradually increased within minutes of incubation with serotonin (Figure VIIIB in the online-only Data Supplement). In contrast, CD11b expression on human monocytes as well as CD11a expression on either cell type did not change in response to serotonin (Figure VIIC in the online-only Data Supplement). In patients with acute coronary syndrome (see Table IV in the online-only Data Supplement for demographics), CD11b surface expression and plasmatic MPO concentration strongly correlated with serotonin levels in plasma (Pearson  $r=0.846^*$ ,  $r=0.6606^*$ , and  $r=0.516^*$ , respectively), while no significant correlations were observed for CD11a, CD62L, PSGL-1, and CXCR2 (Figure 6B through 6D; Figure VIIID in the online-only Data Supplement). Of note, all patients studied had been treated with aspirin plus a P<sub>2</sub>Y<sub>12</sub> inhibitor for at least 24 hours before blood sampling. Conversely, in patients with depression, long-term SRI use suppressed plasma serotonin levels, and reduced neutrophil CD11b expression significantly and MPO levels by trend (Figure 6E) compared to controls (Table V in the online-only Data Supplement). We concluded that activated platelets released serotonin during myocardial ischemia and reperfusion injury leading to the release of secretory granules containing CD11b and

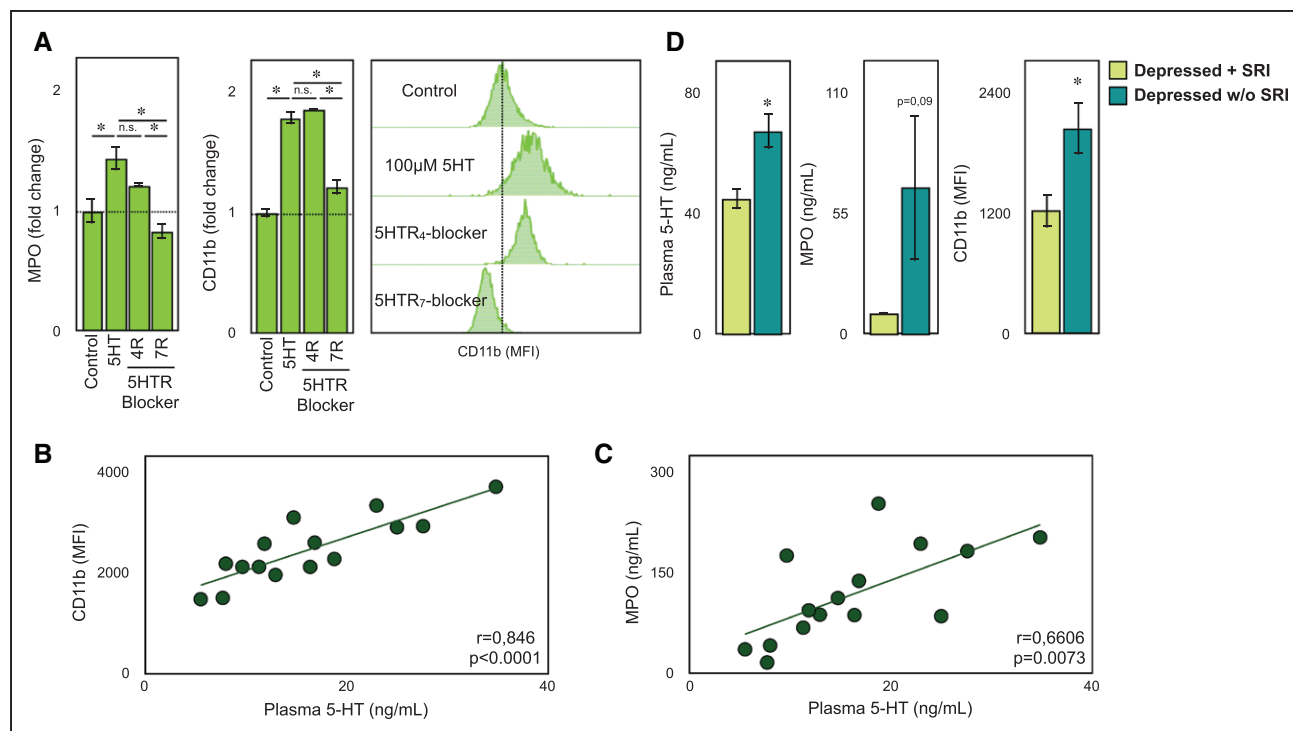
MPO in neutrophils. Elevated CD11b surface expression supported platelet neutrophil complex formation and cell adhesion to the endothelium while MPO aggravated inflammation (Figure 7).

Taken together, long-term fluoxetine treatment, an inducible model of platelet serotonin depletion in adult WT mice, phenocopied *Tph1*<sup>-/-</sup> mice that underwent temporary LAD ligation with respect to CD11b and MPO release and protection from experimental myocardial ischemia and reperfusion injury. Our clinical data suggest that similar mechanisms operate in humans.

## DISCUSSION

Serotonin is well known as a neurotransmitter and modulator of vasomotion.<sup>30-32</sup> Platelets are the dominant store of serotonin outside the nervous system and discharge serotonin on activation. Coronary artery disease and myocardial infarction provide a platelet-stimulating microenvironment that leads to the release of serotonin from platelets.<sup>33</sup> We identified thrombin and TLR4 ligands, but not ADP, as stimulators of serotonin release. In particular, younger patients with coronary artery disease and high serotonin levels are at increased risk for future cardiovascular events.<sup>34</sup> Mechanistically, serotonin was thought to promote platelet aggregation and vasoconstriction of diseased coronary arteries and influence cardiomyocyte function and survival.<sup>35,36</sup> Experimental studies in animals investigating the role of serotonin in myocardial ischemia and reperfusion injury yielded conflicting results, which has, to date, prevented a successful translation into clinical studies.<sup>33,37</sup> Discrepancies may have originated from different experimental setups, different animal models, and most notably, different serotonin receptor antagonists being investigated.

In an early study, the 5-HT<sub>2</sub> receptor antagonist LY53857 did not influence infarct size after 90 minutes of ligation of the left circumflex coronary artery followed by 5 hours of reperfusion in living dogs.<sup>38</sup> In contrast, the combined Ca<sup>2+</sup> and 5-HT<sub>2</sub> receptor antagonist nexopamil reduced infarct size by 55% after 1 hour of LAD ligation and 3 hours of reperfusion in living minipigs.<sup>39</sup> While LY53857 rather increased ex vivo reperfusion injury of isolated rat hearts perfused with platelets in an experimental setup with 15 minutes global ischemia followed by 10 minutes of reperfusion,<sup>40</sup> several 5-HT<sub>2</sub> receptor antagonists reduced ex vivo reperfusion injury of rat hearts after 25 minutes of ischemia and 30 minutes of reperfusion.<sup>41</sup> Circulating serotonin levels were significantly increased after 30 minutes of myocardial ischemia in living rabbits, as well as in isolated rabbit hearts, and treatment with the 5-HT<sub>2A</sub> receptor antagonist sargogrelate reduced infarct size by 32% (after 48 hours of reperfusion) in a more recent study.<sup>33</sup> We report now the first study on myocardial reperfusion injury investigating platelet serotonin depletion in mice.



**Figure 6. Human neutrophil degranulation is regulated by serotonin.**

**A**, Supernatant myeloperoxidase (MPO) concentration and surface CD11b expression on human neutrophils after stimulation with 100 µmol/L serotonin or PBS with and without addition of specific serotonin receptor antagonist (5HT<sub>4</sub> and 5HT<sub>7</sub>). Representative histograms of changes in CD11b expression are shown on the right. Results are presented as mean±SEM. \**P*<0.05, 1-way ANOVA with Tukey *t* test, *n*=4 per treatment. **B**, Correlation of plasma serotonin concentration and CD11b (*P*<0.0001) on blood neutrophils and **C** plasma MPO concentration of patients with acute coronary syndrome. Each point represents an individual patient, *r*=Pearson correlation coefficient. **D**, Quantification of plasma serotonin and MPO levels and CD11b expression in blood of depressed patients treated with (lime green) or without (blue) antidepressants. \**P*<0.05, Student *t* test, *n*=10 per group. n.s. indicates

AQ13

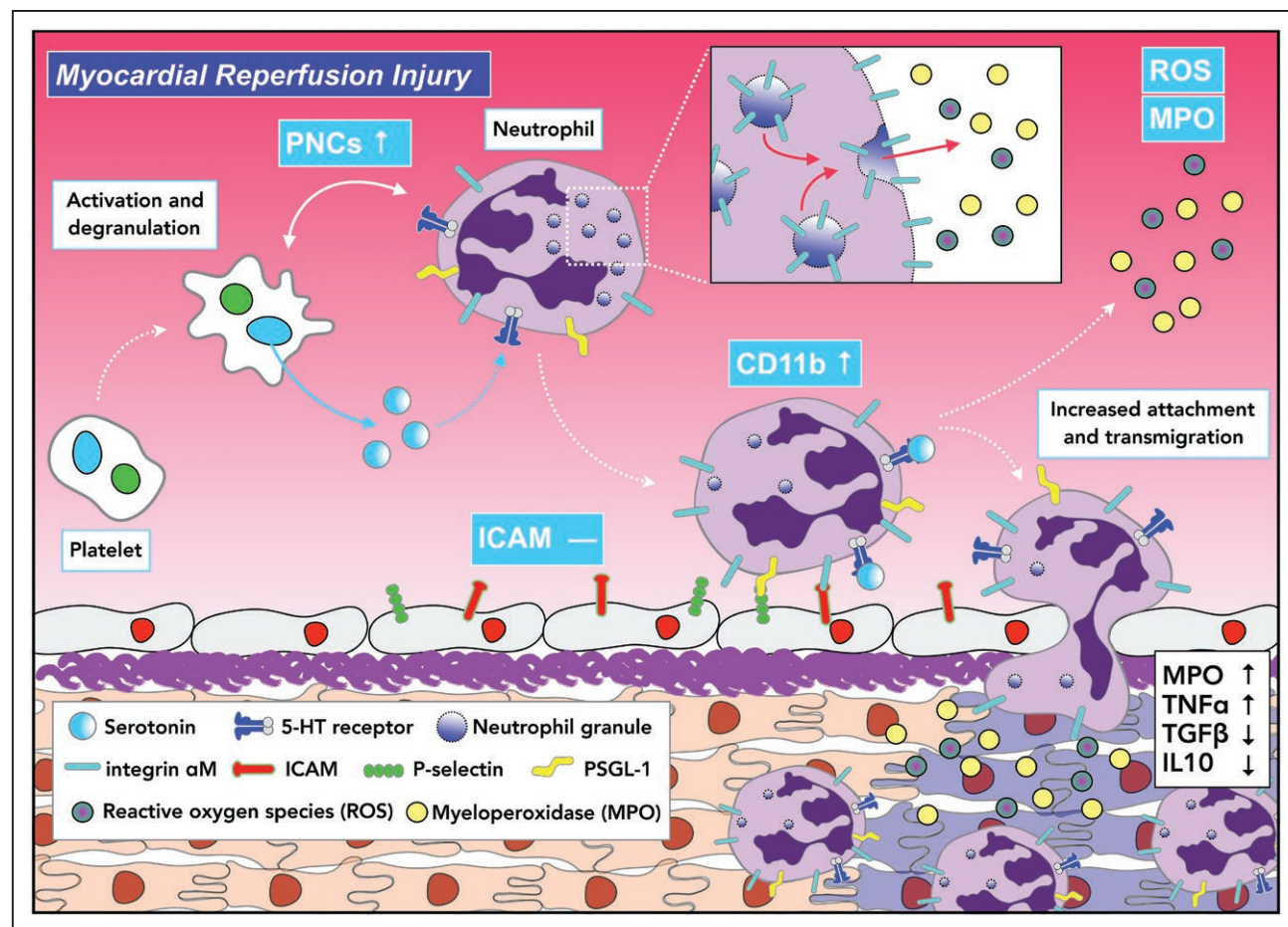
Transient ischemia of ex vivo perfused hearts of *Tph1*<sup>-/-</sup> mice devoid of peripheral serotonin did not affect the loss in cardiac function in the absence of circulating cells, while neutrophil depletion in vivo completely abolished the platelet serotonin-mediated aggravation of reperfusion injury.

Intrigued by these neutrophil-dependent effects, we identified platelet-derived serotonin as a potent stimulator of neutrophils in vitro and in vivo. We provided several lines of evidence that serotonin-induced degranulation in neutrophils increased the surface expression of granule-stored CD11b<sup>27,42</sup> and the release of MPO known to enhance tissue damage in concert with reactive oxygen species.<sup>13,43</sup> First, we found that serotonin elicits CD11b, but not CD11a, surface expression in neutrophils, but not monocytes, as CD11a is not stored in intracellular granules<sup>44</sup> and monocytes are almost devoid of those. Second, vesicle transport inhibition blocked the increase of CD11b surface expression. Third, electron microscopy of neutrophils directly visualized the depletion of intracellular granules on serotonin stimulation. The prompt and gradual increase of CD11b surface expression in neutrophils resembled degranulation kinetics reported for other granule-derived mediators such as MPO, CD66b, lactoferrin, lysozyme, gelatinase, and neutrophil gelatinase-associated lipoprotein.

Interestingly, the P<sub>2</sub>Y<sub>12</sub> antagonist ticagrelor inhibited platelet activation and lowered CD11b surface expression on neutrophils as well. However, these inhibitory effects were independent from serotonin. Serotonin depletion resulted in an additional reduction in CD11b expression. Our data indicate that neutrophil degranulation is nonredundantly controlled by several stimuli, of which serotonin is being described in this work for the first time.

We discovered several serotonin receptor subtypes on neutrophils, most prominently 5-HT<sub>4</sub> and 5-HT<sub>7</sub>. Neutrophil degranulation depends on intracellular calcium increase that is typically mediated by chemokine/cytokine-induced G protein-coupled receptor signaling.<sup>46</sup> Direct serotonin effects on neutrophil degranulation have not been described before. However, serotonin has been shown to stimulate Ca<sup>2+</sup> influx and intracellular Ca<sup>2+</sup> mobilization in vascular smooth muscle cells both via G protein coupled/IP<sub>3</sub>-dependent (eg, 5-HT<sub>2</sub> receptor subset) and cAMP/PKA-dependent (eg, 5-HT<sub>4,7</sub> receptor subsets) signaling pathways.<sup>18,47</sup> We demonstrated that serotonin stimulated neutrophil degranulation via the receptor subtype 7 in humans.

Increased CD11b surface expression renders neutrophils more effective in adhering to the activated endothelium, the extracellular matrix,<sup>7,25</sup> and to plate-



**Figure 7.** Proposed model of platelet serotonin-neutrophil interactions during myocardial reperfusion injury.

Serotonin released by platelets triggers the degranulation of neutrophils, subsequently leading to increased CD11b surface expression. This enhances circulating platelet neutrophil complex levels and supports the accumulation of proinflammatory cytokine-releasing neutrophils within the injured myocardium.

lets, forming complexes.<sup>19</sup> Consequently, lack of platelet serotonin resulted in reduced numbers of PNC and neutrophil deposition in the injured heart. Our findings are in line with previous reports suggesting that limiting neutrophil influx protected from myocardial reperfusion injury.<sup>48</sup> Serotonin has further been shown to aggravate other neutrophil-dependent inflammatory diseases like arthritis, endotoxic shock, asthma, or viral hepatitis,<sup>11,49,50</sup> but the cellular mechanisms have not been completely evaluated.

Finally, we verified that long-term SSRI treatment emptied platelet serotonin stores, providing us with an inducible model of peripheral serotonin deficiency in adult mice. Long-term SSRI treatment protected from myocardial reperfusion injury similar to TPH1 deficiency, resulting in a comparable reduction in CD11b surface expression in neutrophils. Intriguingly, SSRI treatment protected from myocardial ischemia and reperfusion (I/R) injury even on top of P<sub>2</sub>Y<sub>12</sub> inhibition, which is an essential part of standard of care for ACS patients, clinically, and was reported to limit myocardial I/R injury, experimentally in rats and rabbits.<sup>28,29</sup> Platelets, our data suggest, govern neutrophil responses in serotonin-dependent and

-independent pathways. Wholesome platelet depletion, however, may offset the protection conferred by selective serotonin depletion and P<sub>2</sub>Y<sub>12</sub> inhibition in exchange for bleeding complications and is not a viable option in practice.<sup>29</sup> We therefore advocate for targeting undesirable platelet effects in MI, such as those mediated by serotonin, while preserving beneficial ones.

This view is supported by clinical data showing that chronic SSRI use was associated with fewer cardiovascular events in patients with depression.<sup>12</sup> Thus, we extended our experimental studies to humans. We confirmed the stimulatory effects of serotonin on CD11b surface expression and MPO release in human neutrophils mediated via the 5HT<sub>7</sub> receptor. Elevated plasma serotonin levels correlated with neutrophil CD11b surface expression and MPO plasma levels in patients with acute coronary syndrome. Platelet serotonin depletion in noncardiac patients treated with SSRI for their depression, we showed, suppressed CD11b expression and MPO levels.

Thus, we identified a novel mode of platelet-neutrophil crosstalk during myocardial ischemia and reperfusion injury that is relevant to humans: platelets secrete serotonin to promote degranulation of neutrophils with

AQ14



CD11b externalization, and MPO and H<sub>2</sub>O<sub>2</sub> secretion (Figure 7). These findings provide a pathomechanistic rationale for targeting the formerly unrecognized platelet serotonin-neutrophil interactome to ameliorate the inflammatory response in myocardial ischemia/reperfusion injury.

## ARTICLE INFORMATION

Received January 25, 2018; accepted September 19, 2018.

The online-only Data Supplement is available with this article at <https://www.ahajournals.org/journal/circ/doi/suppl/10.1161/circulationaha.118.033942>

## Authors

Maximilian Mauler, PhD; Nadine Herr, MD; Claudia Schoenichen, BSc; Thilo Witsch, MD; Timoteo Marchini, PhD; Carmen Härdtner, PhD; Christoph Koentges, PhD; Korbinian Kienle, MSc; Véronique Ollivier, PhD; Maximilian Schell; Ludwig Dorner, MD; Christopher Wipfel; Daniela Stallmann, BSc; Claus Normann, MD; Heiko Bugger, MD; Paul Walther, PhD; Dennis Wolf, MD; Ingo Ahrens, MD; Tim Lämmermann, PhD; Benoît Ho-Tin-Noé, PhD; Klaus Ley, MD; Christoph Bode, MD; Ingo Hilgendorf, MD\*; Daniel Duerschmied, MD\*

## Correspondence

Daniel Duerschmied, MD and Ingo Hilgendorf, MD, Department of Cardiology and Angiology I, Heart Center, University of Freiburg, Hugstetter Str. 55, 79106 Freiburg, Germany. Email: [daniel.duerschmied@universitaets-herzzentrum.de](mailto:daniel.duerschmied@universitaets-herzzentrum.de) and [ingo.hilgendorf@universitaets-herzzentrum.de](mailto:ingo.hilgendorf@universitaets-herzzentrum.de)

## Affiliations

Faculty of Biology (M.M., K.K.), Faculty of Medicine (M.M., N.H., C.S., T.W., T.M., C.H., C.K., M.S., L.D., C.W., D.S., C.N., H.B., D.W., C.B., I.H., D.D.), Department of Cardiology and Angiology I, Heart Center (M.M., N.H., C.S., T.M., C.H., C.K., M.S., L.D., C.W., D.S., H.B., D.W., I.A., C.B., I.H., D.D.), University of Freiburg, Germany. Max Planck Institute of Immunobiology and Epigenetics, Group Immune Cell Dynamics (K.K., T.L.), Department of Psychiatry, University Medical Center Freiburg (C.N.), Germany. INSERM Unit 1148, University Paris Diderot (V.O., B.H-T.N.); Laboratory for Vascular Translational Science, Sorbonne Paris Cité (V.O., B.H-T.N.), France. Central Facility for Electron Microscopy, Ulm University; Ulm, Germany (P.W.). La Jolla Institute for Allergy and Immunology, La Jolla, CA (D.W., K.L.).

## Acknowledgments

We thank Prof Karlheinz Peter, Baker Heart and Diabetes Institute, Melbourne, Australia; Prof Michael Reth, Max Planck Institute for Immunobiology and Epigenetics, Freiburg, Germany; and Prof Marco Idzko, Department of Pneumology, Medical Center Freiburg, Germany, for their intellectual support and discussion of the data. The authors thank Dr Klaus Kaier and Moritz Hess for their assistance with statistical analysis. Prof Denisa D. Wagner, Harvard Medical School, Boston, MA, has been a long-standing mentor, supporter, and source of ideas for N.H. and D.D.

## Sources of Funding

This work was supported by the Deutsche Forschungsgemeinschaft (DFG) DU 1190/3-1 (D.D.) and IH 1573/2 (I.H.), the National Institutes of Health NIH R01 HL115232 (K.L.), the Ernst und Berta Grimmke Stiftung 3/16, and the German Heart Foundation K/02/16.

## Disclosures

None.

## REFERENCES

1. Yellon DM, Hausenloy DJ. Myocardial reperfusion injury. *N Engl J Med*. 2007;357:1121–1135. doi: 10.1056/NEJMr071667

- Hausenloy DJ, Yellon DM. Myocardial ischemia-reperfusion injury: a neglected therapeutic target. *J Clin Invest*. 2013;123:92–100. doi: 10.1172/JCI62874
- Hausenloy DJ, Botker HE, Engstrom T, Erlinge D, Heusch G, Ibanez B, Kloner RA, Ovize M, Yellon DM, Garcia-Dorado D. Targeting reperfusion injury in patients with ST-segment elevation myocardial infarction: trials and tribulations. *Eur Heart J*. 2017;38:935–941. doi: 10.1093/eurheartj/ehw145
- Heusch G, Gersh BJ. The pathophysiology of acute myocardial infarction and strategies of protection beyond reperfusion: a continual challenge. *Eur Heart J*. 2017;38:774–784. doi: 10.1093/eurheartj/ehw224
- Vinten-Johansen J. Involvement of neutrophils in the pathogenesis of lethal myocardial reperfusion injury. *Cardiovasc Res*. 2004;61:481–497. doi: 10.1016/j.cardiores.2003.10.011
- Horckmans M, Ring L, Duchene J, Santovito D, Schloss MJ, Drechsler M, Weber C, Soehnlein O, Steffens S. Neutrophils orchestrate post-myocardial infarction healing by polarizing macrophages towards a reparative phenotype. *Eur Heart J*. 2017;38:187–197. doi: 10.1093/eurheartj/ehw002
- Ley K, Laudanna C, Cybulsky MI, Nourshargh S. Getting to the site of inflammation: the leukocyte adhesion cascade updated. *Nat Rev Immunol*. 2007;7:678–689. doi: 10.1038/nri2156
- Diacovo TG, Roth SJ, Buccola JM, Bainton DF, Springer TA. Neutrophil rolling, arrest, and transmigration across activated, surface-adherent platelets via sequential action of P-selectin and the beta 2-integrin CD11b/CD18. *Blood*. 1996;88:146–157.
- Zarbock A, Ley K, McEver RP, Hidalgo A. Leukocyte ligands for endothelial selectins: specialized glycoconjugates that mediate rolling and signaling under flow. *Blood*. 2011;118:6743–6751. doi: 10.1182/blood-2011-07-343566
- Kempf T, Zarbock A, Wiedera C, Butz S, Stadtmann A, Rossaint J, Bolomini-Vittori M, Korf-Klingebiel M, Napp LC, Hansen B, Kanwischer A, Bavendiek U, Beutel G, Hapke M, Sauer MG, Laudanna C, Hogg N, Vestweber D, Wollert KC. GDF-15 is an inhibitor of leukocyte integrin activation required for survival after myocardial infarction in mice. *Nat Med*. 2011;17:581–588. doi: 10.1038/nm.2354
- Duerschmied D, Suidan GL, Demers M, Herr N, Carbo C, Brill A, Cifuni SM, Mauler M, Cicko S, Bader M, Idzko M, Bode C, Wagner DD. Platelet serotonin promotes the recruitment of neutrophils to sites of acute inflammation in mice. *Blood*. 2013;121:1008–1015. doi: 10.1182/blood-2012-06-437392
- Sauer WH, Berlin JA, Kimmel SE. Effect of antidepressants and their relative affinity for the serotonin transporter on the risk of myocardial infarction. *Circulation*. 2003;108:32–36. doi: 10.1161/01.CIR.0000079172.43229.CD
- Ali M, Pulli B, Courties G, Tricot B, Sebas M, Iwamoto Y, Hilgendorf I, Schob S, Dong A, Zheng W, Skoura A, Kalgukar A, Cortes C, Ruggeri R, Swirski FK, Nahrendorf M, Buckbinder L, Chen JW. Myeloperoxidase inhibition improves ventricular function and remodeling after experimental myocardial infarction. *JACC Basic Transl Sci*. 2016;1:633–643. doi: 10.1016/j.jacbs.2016.09.004
- Lindsey ML, Bolli R, Cauty JM Jr, Du XJ, Frangogiannis NG, Frantz S, Gourdie RG, Holmes JW, Jones SP, Kloner RA, Lefer DJ, Liao R, Murphy E, Ping P, Przyklenk K, Recchia FA, Schwartz Longacre L, Ripplinger CM, Van Eyk JE, Heusch G. Guidelines for experimental models of myocardial ischemia and infarction. *Am J Physiol Heart Circ Physiol*. 2018;314:H812–H838. doi: 10.1152/ajpheart.00335.2017
- Dürk T, Panther E, Müller T, Sorichter S, Ferrari D, Pizzirani C, Di Virgilio F, Myrtek D, Norgauer J, Idzko M. 5-Hydroxytryptamine modulates cytokine and chemokine production in LPS-primed human monocytes via stimulation of different 5-HT subtypes. *Int Immunol*. 2005;17:599–606. doi: 10.1093/intimm/dxh242
- Pracharová L, Okénková K, Lojek A, Ciz M. Serotonin and its 5-HT(2) receptor agonist DOI hydrochloride inhibit the oxidative burst in total leukocytes but not in isolated neutrophils. *Life Sci*. 2010;86:518–523. doi: 10.1016/j.lfs.2010.02.003
- Patocká N, Sharma N, Rashid M, Ribeiro P. Serotonin signaling in *Schistosoma mansoni*: a serotonin-activated G protein-coupled receptor controls parasite movement. *PLoS Pathog*. 2014;10:e1003878. doi: 10.1371/journal.ppat.1003878
- Okubo M, Satoh Y, Hirakawa M, Sasaki K, Masu K, J McHonde G, Ikeda-Kurosawa C, Kurosaka D, Saino T. Different effect of serotonin on intracellular calcium ion dynamics in the smooth muscle cells between rat posterior ciliary artery and vorticos vein. *Biomed Res*. 2016;37:101–115. doi: 10.2220/biomedres.37.101
- Zarbock A, Polanowska-Grabowska RK, Ley K. Platelet-neutrophil interactions: linking hemostasis and inflammation. *Blood Rev*. 2007;21:99–111. doi: 10.1016/j.blre.2006.06.001



AQ15

AQ16

AQ17

20. Gros A, Ollivier V, Ho-Tin-Noé B. Platelets in inflammation: regulation of leukocyte activities and vascular repair. *Front Immunol*. 2014;5:678. doi: 10.3389/fimmu.2014.00678
21. Walther DJ, Peter JU, Bashammakh S, Hörtnagl H, Voits M, Fink H, Bader M. Synthesis of serotonin by a second tryptophan hydroxylase isoform. *Science*. 2003;299:76. doi: 10.1126/science.1078197
22. Jolly SR, Kane WJ, Hook BG, Abrams GD, Kunkel SL, Lucchesi BR. Reduction of myocardial infarct size by neutrophil depletion: effect of duration of occlusion. *Am Heart J*. 1986;112:682–690.
23. Page C, Pitchford S. Neutrophil and platelet complexes and their relevance to neutrophil recruitment and activation. *Int Immunopharmacol*. 2013;17:1176–1184. doi: 10.1016/j.intimp.2013.06.004
24. Mauler M, Seyfert J, Haenel D, Seeba H, Guenther J, Stallmann D, Schoenichen C, Hilgendorf I, Bode C, Ahrens I, Duerschmied D. Platelet-neutrophil complex formation—a detailed *in vitro* analysis of murine and human blood samples. *J Leukoc Biol*. 2016;99:781–789. doi: 10.1189/jlb.3TA0315-082R
25. Kolaczowska E, Kubes P. Neutrophil recruitment and function in health and inflammation. *Nat Rev Immunol*. 2013;13:159–175. doi: 10.1038/nri3399
26. Vanags DM, Rodgers SE, Duncan EM, Lloyd JV, Bochner F. Potentiation of ADP-induced aggregation in human platelet-rich plasma by 5-hydroxytryptamine and adrenaline. *Br J Pharmacol*. 1992;106:917–923.
27. Borregaard N, Cowland JB. Granules of the human neutrophil: heterophilic polymorphonuclear leukocyte. *Blood*. 1997;89:3503–3521.
28. Ye Y, Birnbaum GD, Perez-Polo JR, Nanhwan MK, Wang S, Birnbaum Y. Ticagrelor protects the heart against reperfusion injury and improves remodeling after myocardial infarction. *Arterioscler Thromb Vasc Biol*. 2015;35:1805–1814. doi: 10.1161/ATVBAHA.115.305655
29. Cohen MV, Yang XM, White J, Yellon DM, Bell RM, Downey JM. Cangrelor-mediated cardioprotection requires platelets and sphingosine phosphorylation. *Cardiovasc Drugs Ther*. 2016;30:229–232. doi: 10.1007/s10557-015-6633-2
30. Berger M, Gray JA, Roth BL. The expanded biology of serotonin. *Annu Rev Med*. 2009;60:355–366. doi: 10.1146/annurev.med.60.042307.110802
31. Duerschmied D, Bode C. [The role of serotonin in haemostasis]. *Hamostaseologie*. 2009;29:356–359.
32. Watts SW. Oh, the places you'll go! My many colored serotonin (apologies to Dr. Seuss). *Am J Physiol Heart Circ Physiol*. 2016;311:H1225–H1233. doi: 10.1152/ajpheart.00538.2016
33. Shimizu Y, Minatoguchi S, Hashimoto K, Uno Y, Arai M, Wang N, Chen X, Lu C, Takemura G, Shimomura M, Fujiwara T, Fujiwara H. The role of serotonin in ischemic cellular damage and the infarct size-reducing effect of sarpogrelate, a 5-hydroxytryptamine-2 receptor blocker, in rabbit hearts. *J Am Coll Cardiol*. 2002;40:1347–1355.
34. Vikenes K, Farstad M, Nordrehaug JE. Serotonin is associated with coronary artery disease and cardiac events. *Circulation*. 1999;100:483–489.
35. Doggrel SA. The role of 5-HT on the cardiovascular and renal systems and the clinical potential of 5-HT modulation. *Expert Opin Investig Drugs*. 2003;12:805–823. doi: 10.1517/13543784.12.5.805
36. Nebigil CG, Etienne N, Messaddeq N, Maroteaux L. Serotonin is a novel survival factor of cardiomyocytes: mitochondria as a target of 5-HT<sub>2B</sub> receptor signaling. *FASEB J*. 2003;17:1373–1375. doi: 10.1096/fj.02-1122fje
37. Muto T, Usuda H, Yamamura A, Yoshida K, Ohashi A, Mitsui-Saitoh K, Sakai J, Sugimoto Y, Mizutani H, Nonogaki T, Hotta Y. Protective effects of flvoxamine against ischemia/reperfusion injury in isolated, perfused guinea-pig hearts. *Biol Pharm Bull*. 2014;37:731–739.
38. Simpson PJ, Schelm JA, Jakubowski JA, Smallwood JK. The role of serotonin (5HT<sub>2</sub>) receptor blockade in myocardial reperfusion injury: effects of LY53857 in a canine model of myocardial infarction. *J Pharmacol Exp Ther*. 1991;258:979–985.
39. Hohlfeld T, Braun M, Strobach H, Schrör K. Protection of reperfused ischemic pig myocardium by nexopamil, a new combined Ca<sub>2+</sub> and serotonin antagonist. *J Cardiovasc Pharmacol*. 1994;23:922–931.
40. Yang BC, Virmani R, Nichols WW, Mehta JL. Platelets protect against myocardial dysfunction and injury induced by ischemia and reperfusion in isolated rat hearts. *Circ Res*. 1993;72:1181–1190.
41. Grover GJ, Sargent CA, Dzwonczyk S, Normandin DE, Antonaccio MJ. Protective effect of serotonin (5-HT<sub>2</sub>) receptor antagonists in ischemic rat hearts. *J Cardiovasc Pharmacol*. 1993;22:664–672.
42. Cowland JB, Borregaard N. Granulopoiesis and granules of human neutrophils. *Immunol Rev*. 2016;273:11–28. doi: 10.1111/imr.12440
43. Dale DC, Boxer L, Liles WC. The phagocytes: neutrophils and monocytes. *Blood*. 2008;112:935–945. doi: 10.1182/blood-2007-12-077917
44. Faurischou M, Borregaard N. Neutrophil granules and secretory vesicles in inflammation. *Microbes Infect*. 2003;5:1317–1327.
45. Naegelen I, Beaume N, Plançon S, Schenten V, Tschirhart EJ, Brécard S. Regulation of neutrophil degranulation and cytokine secretion: a novel model approach based on linear fitting. *J Immunol Res*. 2015;2015:817038. doi: 10.1155/2015/817038
46. Lacy P. Mechanisms of degranulation in neutrophils. *Allergy Asthma Clin Immunol*. 2006;2:98–108. doi: 10.1186/1710-1492-2-3-98
47. Wong DT, Perry KW, Bymaster FP. Case history: the discovery of fluoxetine hydrochloride (Prozac). *Nat Rev Drug Discov*. 2005;4:764–774. doi: 10.1038/nrd1821
48. Arai M, Lefer DJ, So T, DiPaula A, Aversano T, Becker LC. An anti-CD18 antibody limits infarct size and preserves left ventricular function in dogs with ischemia and 48-hour reperfusion. *J Am Coll Cardiol*. 1996;27:1278–1285.
49. Lang PA, Contaldo C, Georgiev P, El-Badry AM, Recher M, Kurrer M, Cervantes-Barragan L, Ludewig B, Calzascia T, Bolinger B, Merkler D, Odermatt B, Bader M, Graf R, Clavien PA, Hegazy AN, Löhning M, Harris NL, Ohashi PS, Hengartner H, Zinkernagel RM, Lang KS. Aggravation of viral hepatitis by platelet-derived serotonin. *Nat Med*. 2008;14:756–761. doi: 10.1038/nm1780
50. Cloutier N, Paré A, Farndale RW, Schumacher HR, Nigrovic PA, Lacroix S, Boilard E. Platelets can enhance vascular permeability. *Blood*. 2012;120:1334–1343. doi: 10.1182/blood-2012-02-413047

AQ19

AQ20

AQ21

AQ22

AQ23

AQ24