

POLAR TOURISM AS AN EFFECTIVE RESEARCH TOOL

Citizen Science in the Western Antarctic Peninsula

By Allison M. Cusick, Robert Gilmore, Annette Bombosch, Martina Mascioni, Gastón O. Almandoz, and Maria Vernet



Reaching into the unknown, citizen scientists collect seawater samples to help researchers answer questions of the changing polar environment. *Photo credit: Allison Cusick*

ABSTRACT. The Antarctic Peninsula is one of the fastest warming regions in the world, with over 87% of its glaciers in retreat. The resulting influx of glacial meltwater to the coastal ecosystems may influence the succession patterns of primary producers. It is critical to document these dynamics, gathering time-series data throughout the seasonal growth period, because any shifts in primary production can affect higher trophic level organisms in the nearshore food web. The Antarctic tourism industry maintains a fleet of vessels that visit the peninsula's nearshore waters throughout the austral summer, November to March. We developed a citizen science (CS) program—FjordPhyto—to leverage these vessels as platforms for gathering data about the region. Trained staff and travelers collect environmental data and biological samples that are sent to researchers. Preliminary results include phytoplankton species identification, cell abundance determination, carbon biomass estimates, and euphotic depth measurement at multiple sites. We show that CS is a valid tool that can enhance research in Antarctica, while also providing an enriching experience to travelers interested in learning more about science in polar environments.

INTRODUCTION

The poles are the fastest warming regions on Earth, garnering global attention from scientists, policymakers, and the public (Larsen et al., 2014). Yet, not enough is known about their ecosystem structures and functions to predict how they will change in future climate scenarios. In the Southern Hemisphere, the Western Antarctic Peninsula (WAP) has warmed rapidly in the second half of the twentieth century, resulting in retreat of more than 87% of its marine glacier fronts (Cook et al., 2016; Turner et al., 2016). It is critical to understand how glacial meltwater patterns impact phytoplankton communities in coastal fjords because any shifts in primary production can affect higher trophic level organisms in the nearshore food web.

The high-latitude oceans are notoriously difficult to monitor because of their harsh environments. Research is logistically challenging; surface moorings are ineffective due to the presence of sea ice and frequent collisions with icebergs; ocean color satellites using visible light are hampered by persistent cloud cover; and research vessels can provide in-depth sampling only during short time periods. Although several nations have research programs that collect long-term data, most are restricted to short time periods (e.g., one month) or at static locations (Henley et al., 2019). As a result, we have relatively sparse spa-

tial and temporal year-round coverage of the WAP's 1,300 km nearshore waters compared to more accessible regions in the world. Knowledge of seasonal patterns is patchy, and studies provide varying evidence of how these ecosystems will respond at regional scales (Moline et al., 2004; Constable et al., 2014).

The WAP coastline has hundreds of islands, straits, fjords, and embayments where glaciers deliver ice and meltwater. These nearshore locations appear to be hotspots of biodiversity with high biological productivity (Vernet et al., 2008). They provide refuge and are aggregation zones for baleen whales (Nowacek et al., 2011), penguins, and seals (e.g., Santora and Reiss, 2011; Bernard and Steinberg, 2013) whose foraging efforts coincide with krill distribution (Espinasse et al., 2012). Additionally, the fjords' seafloors harbor an abundance of benthic animals such as amphipods, polychaetes, and echinoderms (Grange and Smith, 2013). These pelagic and benthic animal aggregations within the nearshore may be fueled by intense phytoplankton blooms that occur throughout the summer and fall (Smith et al., 2008). This “invisible forest” (Falkowski, 2002) of microscopic organisms plays a large role in providing oxygen to the environment and cycling carbon. Seasonal shifts in phytoplankton taxa are significant in the WAP, following changes in day length (e.g., Rozema et al., 2017; Schofield et al., 2017). Using

improved molecular tools, understanding the shifts in phytoplankton taxonomic groups down to the species level can shed light on their functional roles (e.g., Lin et al., 2017). Furthermore, integrating molecular techniques with taxonomical analysis will reveal species diversity shifts in this invisible forest (Figure 1) with future climate scenarios. Understanding such dynamics requires gathering data repeatedly, over a full season, for many years or even decades (Magnuson, 1990). How could this type of coverage be achieved over the long term?

One platform that has not yet been leveraged is the fleet of tour expedition vessels run by members of the International Association of Antarctica Tour Operators (IAATO) for visits to the WAP during five months of each year. These ships cover hundreds of nautical miles, making daily landings repeatedly over a season (Bender et al., 2016). Although Antarctica is devoid of permanent residents and indigenous peoples, between researchers, fishers, and travelers, there is a considerable human presence. The ship-based tourism community is growing, with an estimated 59,367 visitors making landings in 2019/2020, outnumbering scientists more than 10 to one (IAATO, 2019a). Partnership with these vessels would allow sampling over a larger temporal and spatial extent, and could prove an effective method for characterizing phytoplankton community succession in response to glacial meltwater within nearshore fjord ecosystems.

These vessels also allow valuable opportunities for citizen science (CS), or Public Participation in STEM Research (PPSR), with travelers helping to collect reliable data that can be published in peer-reviewed scientific literature (McKinley et al., 2017). There are more than 3,000 active CS projects around the globe (see <https://scistarter.org/>), and the field is currently developing best practices (Shirk et al., 2012). CS provides a way to fill gaps in research while increasing enthusiasm for science among the public (Kennicutt et al., 2014; Miller, 2016).

CITIZEN SCIENCE PROJECT DEVELOPMENT

Following the US government's Federal Crowdsourcing and Citizen Science Toolkit (US Federal Government, 2019), we developed the FjordPhyto project so that staff and travelers on Antarctic tour vessels could contribute to research questions investigating a succession of phytoplankton communities within coastal fjords. The toolkit includes five basic steps for planning, designing, and carrying out a CS project (adapted from Bonney et al., 2009): (1) scope your

problem, (2) design a project, (3) build a community, (4) manage your data, and (5) sustain and improve. Additional resources from the Biological Sciences Curriculum Study (BSCS) within the National Science Foundation (Edelson, Kirn, et al., 2018), along with a workflow Logic Model sheet from the CitSci2017 workshop (Phillips et al., 2014), were used to further guide the initial development of the project.

The following describes the five basic steps considered during the design and development of the FjordPhyto project.

STEP 1: SCOPE YOUR PROBLEM

Scientific Rationale

As glaciers melt along the coast, they deliver ice and freshwater to the marine environment with a maximum signal late in the summer (Dierssen et al., 2002). It is unknown how the freshwater influx from these coastal tidewater glaciers will influence the ecosystem at the level of primary producers (i.e., phytoplankton; Hernando et al., 2015). It has been hypothesized that freshwater provides a stratified environment beneficial for phytoplankton blooms (Dierssen et al., 2002), and studies show

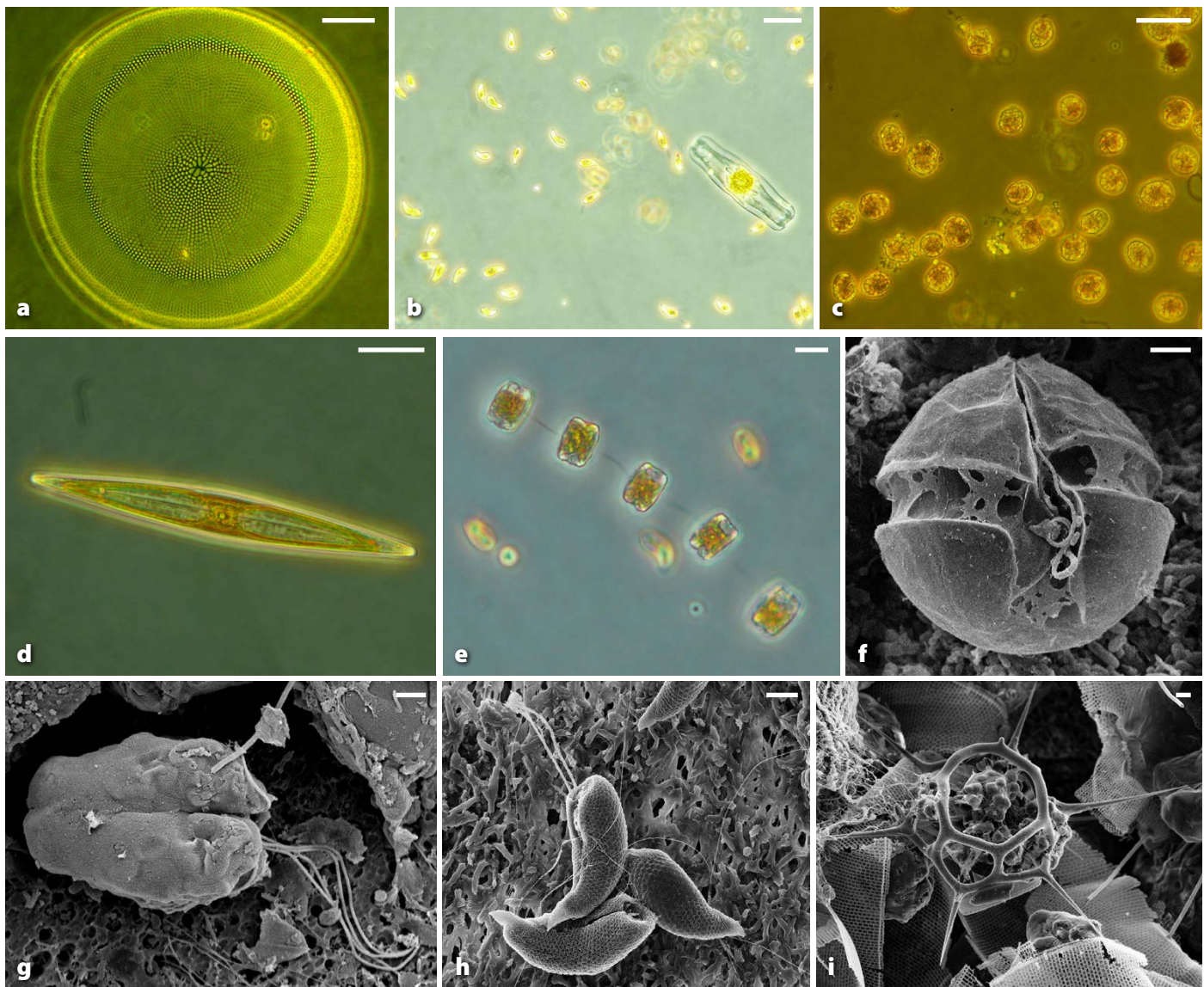


FIGURE 1. Microscope images of phytoplankton taxa from samples collected in the nearshore regions of the Western Antarctic Peninsula display different shapes and sizes. (a) Diatom *Coscinodiscus bouvet*, (b) cryptophytes with diatom (note size differences), (c) small dinoflagellates, (d) Navicula diatom, (e) chain-forming diatom genus *Thalassiosira*, (f) dinoflagellate genus *Peridiniella*, (g) prasinophyte genus *Pyramimonas*, (h) cryptophytes, and (i) silicoflagellate *Dictyocha speculum*. (a–e) Light microscope scale bar is 10 μm . (f – i) Scanning electron microscope scale bar is 2 μm .



FIGURE 2. Travelers assist trained tour ship staff in collecting phytoplankton samples from the field. *Photo credit: Robert Gilmore*

there can be cryptophyte abundance in mixed layers enriched in meltwater (Moline et al., 2004; Mendes et al., 2013), although other environmental factors can be equally important (e.g., Brandini and Rebello, 1994; Lange et al., 2015; De Lima et al., 2019). Present-day observations indicate that WAP coastal waters have an early spring diatom bloom from October through November, presumably related to sea ice retreat (Ross et al., 2000; Kim et al., 2018), and a later summer diatom bloom occurring in January. Before and after diatom blooms, smaller flagellates (e.g., cryptophytes) dominate (Kozłowski et al., 1995; Rozema et al., 2017).

Different taxa contribute varying amounts of carbon biomass to the ecosystem (Garibotti et al., 2005). Regardless of the phytoplankton succession in any given season, it remains unclear how shifts will affect higher trophic level organisms in the nearshore food web (Corbisier et al., 2004; Saba et al., 2014). This knowledge is crucial to understanding recruitment of larval *Euphausia superba*—Antarctic krill—a key zooplankton species of the

Southern Ocean (Ross et al., 1996) that feeds higher trophic levels. Krill select for larger diatom and chain-forming phytoplankton (Haberman et al., 2003) for reproductive success; thus, changes in phytoplankton communities may affect krill populations (Nicol et al., 2010) as well as nearshore food webs containing fish and amphipods (Sailley et al., 2013). Sampling of both phytoplankton and meltwater along the WAP may help predict future changes.

Objectives

FjordPhyto has both scientific and educational objectives:

1. Scientific aims: (a) Determine the seasonal and interannual changes in meltwater intrusion at fjords and coastal embayments at multiple sites, and (b) characterize the phytoplankton community diversity and species succession during the austral growth period (November to March).
2. Education and broader impact aims: (a) Create a sampling program under which travelers can participate in

the scientific process with the guidance of trained staff; (b) gather data at popular landing sites near glaciers, creating a time-series data set; and (c) increase ocean literacy of travelers through education and participation in CS projects.

STEP 2: DESIGNING A CITIZEN SCIENCE PROJECT

The FjordPhyto project is designed to be an engaging bonus activity that complements the cruise experience without competing for time allotted to other activities offered. During each voyage, travelers learn about FjordPhyto as a CS project that will be carried out during their trip. Informative talks are offered by staff, information is posted around the ship, and announcements are made. At each site of interest, staff leading the project organize interested travelers to board a rubber inflatable boat typically seating five to 18 people (Figure 2). Sampling can be carried out during either landing or cruising excursions to or from shore. Once the group reaches the GPS location, ship's

staff distribute tasks among participants. Staff explain the protocols and the importance of research on Antarctic fjord ecosystems and assist travelers in sampling (Cusick, 2018a; Sear, 2018; respectively).

Training

A high priority was designing a sampling program using easy-to-operate scientific equipment and sampling protocols. Protocols and videos were developed, field tested, and refined with staff input (Lee, 2017). Before each field season, researchers meet with ship staff in person or via teleconference to identify sampling locations and to discuss the transfer of necessary gear to the ship as well as end-of-season logistics, including sending data and samples to Ushuaia, Argentina, and California, United States. Continuous communication and feedback via email throughout the seasons further guide development of this program.

Choosing Sample Locations

Samples are taken from November to March at several locations along the WAP between King George Island (62°S, 58°W) and Marguerite Bay (near 68°S,

68°W; **Figure 3**). IAATO uses a ship scheduling tool that allows management of landing site visits in accordance with the Antarctic Treaty System (ATS) and IAATO requirements for minimal or transitory impact on the environment. This coordination is based on the legally binding agreement signed as Measure 15 (2009) during the Antarctic Treaty Consultative Meeting (ATCM) XXXII (IAATO, 2009) and provides a reliable method for determining sites that might be visited during each season.

The specific sampling locations for FjordPhyto are chosen based on popular landing sites located near tidewater glaciers (**Figure 3**). Other considerations include logistical ease for cruise operators to conduct the activity based on time restrictions at that site and the frequency of IAATO-member ships visiting those sites. Landing sites are regulated (via ATS and IAATO requirements) to restrict the number of vessels that can visit any site at a given time. Typically, ships follow a predictable yet flexible itinerary traveling similar routes. This coordination permits many sites to be visited repeatedly over the season.

Sampling Meltwater

CTD Measurements. Using an annually calibrated SonTek CastAway® CTD, participants collect water column profiles of temperature and salinity at each sampling location (**Figure 3**). The CTDs are deployed manually and can withstand pressures to 100 m (**Figure 4**). The range and accuracy of the device is based on company-calibrated specifications with an accuracy of 0.25% of measured value and a drift that does not exceed 0.075°C per year for temperature and 0.380% per year for salinity. Data that are later exported to researchers for defining the presence of meltwater and calculating mixed layer depths include pressure, depth, temperature, conductivity, specific conductance, salinity, sound velocity, and density (Thomson and Fine, 2003; Pan et al., 2019).

Secchi Depth. With supervision, CS participants measure water turbidity by submerging a Secchi disk to the depth where it disappears (the oldest turbidostat known to oceanography; Wernand, 2010; **Figure 4**). The Secchi disk-determined depth can provide excellent information on light attenuation and can be used to calculate euphotic depth (Z_{eu}) where photosynthetic available radiation is 1% of its surface value in the water column (**Figure 5**; Aas et al., 2014). In this project, commercially available disks were used for the estuarine coastal environment known to have higher turbidity and varying optical properties due to meltwater and tidal variations compared to those of the open ocean (Hou et al., 2007).

Sampling Phytoplankton Communities

CS participants collect surface phytoplankton samples (**Figure 4**). These samples are later analyzed in the laboratory by microscopy for cell abundance and carbon biomass, and by high-throughput sequencing for species diversity and function. Under the constraints of this project, only surface phytoplankton can be evaluated, and replicates are taken when

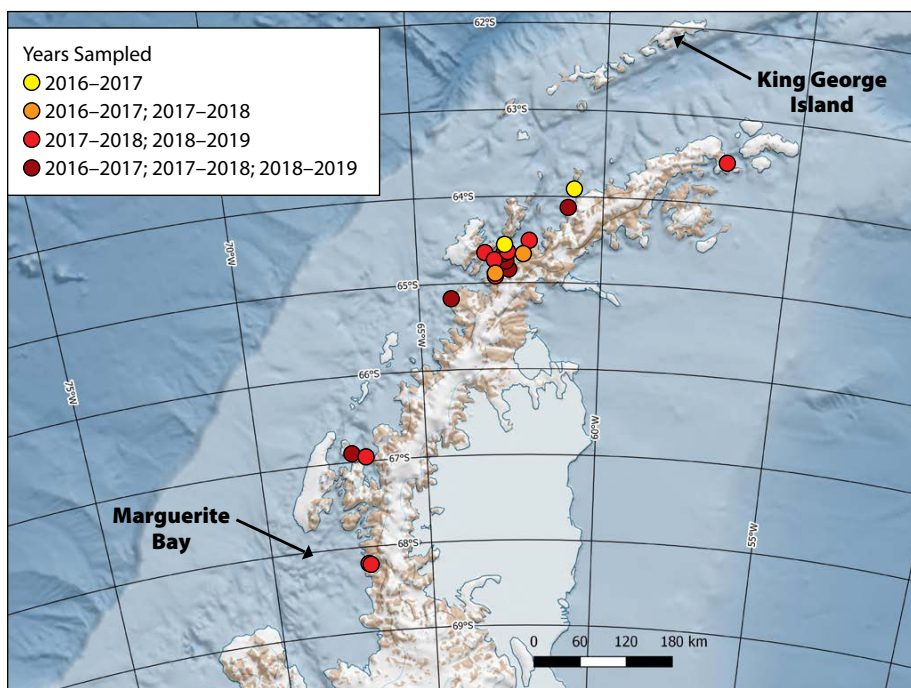


FIGURE 3. A map of the Western Antarctic Peninsula shows the locations of samples collected from 2016 to 2019. The map was created using QGIS Desktop 2.18.24.

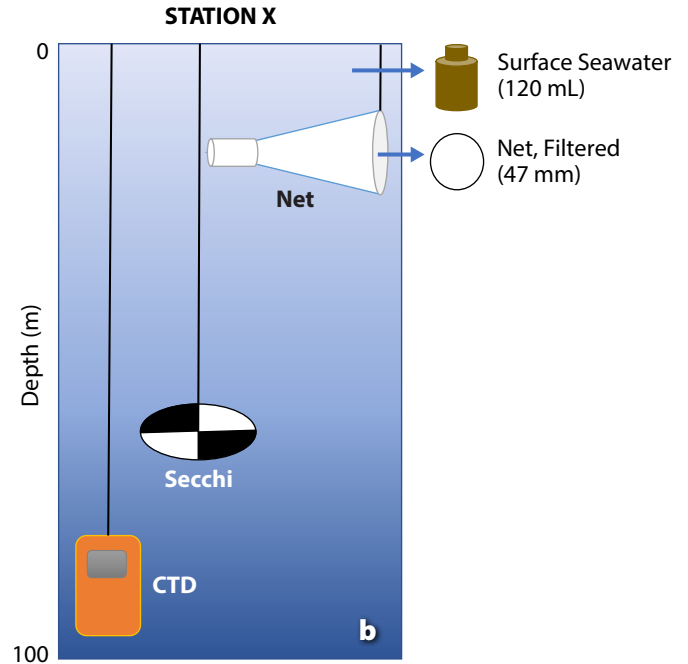


FIGURE 4. Sampling methods. (a) Citizen scientists assist staff with a phytoplankton net tow. *Photo credit: Mathew Farrell* (b) Schematic of sampling methods. Two measurements (CTD and Secchi depth) and two samples are collected at each station. Surface seawater is collected in bottles for examination by microscopy to determine cell abundance and carbon biomass, and high-throughput sequencing of net-collected phytoplankton provides data on species diversity and function.

possible. Permits are not needed to sample phytoplankton from seawater as per the United States Antarctic Program following the Antarctic Conservation Act (ACA of 1978, NSF 01-151).

Microscopy. Surface seawater (0–5 m depth) is collected and preserved by filling pre-rinsed amber HDPE bottles (120 mL) and adding a Lugol's solution (4% final concentration; Edler and Elbrächter, 2010), which is a less toxic preservation option that stains more fragile organisms. Samples are kept in a cool, dark place until the end of the season, when they are offloaded and sent to Universidad Nacional de La Plata, Argentina, for researchers to analyze (as described in detail in Mascioni et al., 2019). The measurement error is <10% with 400 cells counted per sample.

Molecular Genetics. A SEA-GEAR Corporation plankton net (20 μm mesh) is towed at idle speed for 10 minutes to con-

centrate surface phytoplankton (0–5 m, **Figure 4a**). The sample is then filtered (0.2 μm) using a hand-operated vacuum pump. Filters are inserted into pre-filled tubes with Invitrogen RNeasy Lysis Solution and frozen on board the ship until the end of the season. In the absence of deep-freezing capabilities, this nontoxic reagent rapidly permeates cells to stabilize and protect genetic material. According to manufacturer specifications, genetic material can be protected from potential degradation if left at room temperature for up to one week. This benefit allows samples to be unfrozen during air transit to San Diego, California, where researchers then freeze tubes until they can be processed.

Educational Outreach

Aboard a tour vessel, every day provides multiple opportunities for education. Formal and informal lectures are typically offered by staff and guest scientists on topics that include explo-

ration, natural history, and science. FjordPhyto provides lecture slides detailing aspects of oceanography and the importance of phytoplankton in the polar and global ecosystems. Vessels that do not have microscopes on board are given a Celestron TetraView LCD Digital Compound Microscope and the book *Plankton* by Christian Sardet (2015) for further engagement with the phytoplankton world. A portion of the plankton net tow can be reserved for viewing on board, offering additional opportunities for teaching about the invisible forest and primary producers.

STEP 3: BUILDING A COMMUNITY Establishing Capacity

Before launching any CS project, it is important to establish the capacity of interested partners. IAATO members work together within the ATS framework to deliver safe, environmentally responsible operations in Antarctica. One of IAATO's missions is to support science in

various ways. They report their activities annually under the ATCM, making this information, including annual reports, tourism statistics, and guidelines for travelers and tour operators, available publicly on their website (IAATO, 2019b). In addition, FjordPhyto researchers presented at various conferences before and during the project's launch to gain perspective from multiple stakeholders, including private-sector tour operators and staff, polar researchers, grant program managers, and CS practitioners (Cusick, 2017a,b).

Pilot and Launch

FjordPhyto was tested during the 2016–2017 season with two IAATO-member operators (see section below on Phytoplankton Diversity in Fjords; Mascioni et al., 2019). With funding for subsequent seasons, sampling efforts were expanded (detailed herein), and partnerships with tour operators increased (Table 1). An estimated 2,500 travelers have directly participated in sample col-

lection since the launch of the program, with additional participants attending the onboard lectures. FjordPhyto is open to all interested IAATO ships; however, we have not been able to fully accommodate increasing interest and integrate new partners due to program funding constraints (see Discussion).

STEP 4: DATA MANAGEMENT

One of the most common questions and recognized concerns about CS is data quality. Many CS studies have shown that these challenges can be successfully managed (Wiggins et al., 2011; Miller-Rushing et al., 2012) to provide valid results publishable in peer-reviewed scientific journals (Crall et al., 2011). To reduce the possibility of poorly collected data, researchers chose user-friendly equipment and developed clear protocols to ensure sampling consistency among all participants. Researchers train the ship staff annually in person at meetings and on ships in the field, with reinforcement via teleconference. The same gear is dis-

tributed to all ships, and instrumentation is calibrated annually by the manufacturer. Researchers participate in cruises to take additional replicates. All data files are transferred to researchers who identify missing or erroneous information. Additionally, quality control procedures exist for downstream sample processing to ensure the integrity of microscopy and genetic samples.

To date, samples are being processed and form the basis of two PhD theses. Once published in scientific journals (e.g., Mascioni et al., 2019), the environmental data will be sent to a long-lived repository (e.g., BCO-DMO), and meta-data will be deposited in the Antarctic Master Directory. Genetic sequencing data will be stored in online databases (e.g., GenBank BioProject).

STEP 5: SUSTAIN AND IMPROVE

To sustain and improve a CS project, there must be communication among the scientists, operators, staff, and travelers. In addition to coordinating logistics and analyzing samples for publication, researchers must be available to solve issues that occur during the season, gauge strengths and weaknesses of the program, share results in a timely manner, and secure funding to ensure the project's longevity.

The impact of the FjordPhyto program is gauged in two ways. First, are samples scientifically relevant and do they advance knowledge of this region? Peer review will help determine whether the data are of sufficient quality to provide scientific merit (e.g., Mascioni et al., 2019). Second, is there a positive impact on travelers' participation and learning? The latter question is partially evaluated by distributing questionnaires to staff and travelers, asking for feedback and suggestions for improvements. The responses received (Table 1) help guide further project development (see Discussion).

The personal contact information of participants is not shared with the researchers for privacy reasons. Therefore,

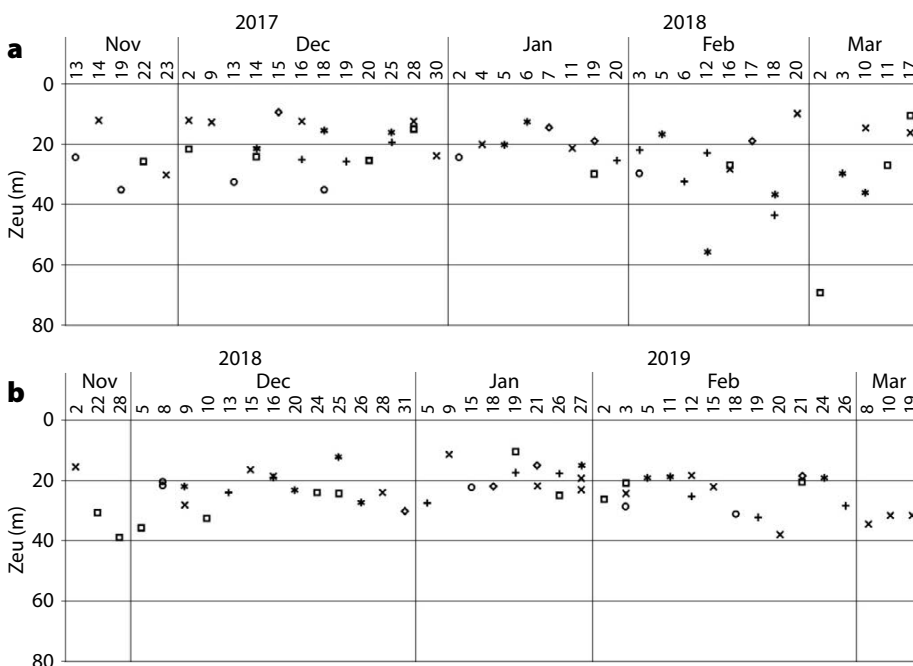


FIGURE 5. Time-series data at select locations (shapes) showing euphotic depth (Z_{eu}) for (a) 2017/2018, and (b) 2018/2019. Values were calculated using the Secchi depth (D_s) to obtain diffuse attenuation coefficient (K_d) in the equation $K_d \sim 1.7/D_s$ and euphotic depth using $Z_{eu} = \text{LN}(0.01)/K_d$, where 0.01 is 1% irradiance at depth (I_z) to surface (I_0); $I_z/I_0 = 0.01$ (as in Aas et al., 2014).

- LOCATION NAME**
- Cierva Cove
 - Cuverville Island
 - + Danco Island
 - × Neko Harbor
 - * Paradise Bay
 - ◇ Wilhelmina Bay

in an effort to maintain engagement and disseminate results, we developed a website (<https://www.fjordphyto.org>) and social media accounts (@FjordPhyto on Facebook, Twitter, and Instagram) where we post updates. We also present our project to the scientific and CS communities by attending and speaking at conferences (Cusick, 2018b,c, 2019; Mascioni, 2019).

PHYTOPLANKTON DIVERSITY IN FJORDS

The identity, abundance, and biomass of the phytoplankton sampled in FjordPhyto's first year reveal the seasonal development of phytoplankton communities at varying sites, north to south (Figures 3, 5, and 6). For example, Figure 6 shows data from Cierva Cove (64°09'18"S, 60°55'12"W), Wilhelmina Bay (64°37'13.44"S, 62°12'07.14"W), and Neko Harbor (64°50'34.44"S,

62°32'13.13"W). At these three sites, small flagellates were present during the entire sampling period and usually dominated the phytoplankton community at the beginning of the season. Most of the phytoplankton carbon biomass (as estimated using cell-volume conversion described in Mascioni et al., 2019) came from large cells, diatoms, and dinoflagellates, although prasinophyceans were also important in Neko Harbor during January (Figure 6). In Wilhelmina Bay, in mid-December, there was a cryptophyte bloom of organisms morphologically related to the genus *Plagioselmis*, presumably a new species for Antarctica (Mascioni et al., 2019). During this first season of sampling, we also identified two other flagellate blooms, *Pyramimonas* sp. in Neko Harbor, and an unidentified unarmored dinoflagellate at Danco Island (data not shown).

DISCUSSION

After three years of operation, we consider FjordPhyto a successful CS project, proven to be feasible in the field. It provided scientifically relevant samples, and it was well received by IAATO operators and travelers (Table 1). We attribute its success to the efforts of dedicated staff and scientists who provided travelers with a meaningful experience.

When scoping the problem, we started by setting realistic goals regarding the project's capacity, scale, participant interests, and scientific priorities. Due to the difficulty in collecting data from this region, we consider CS a beneficial approach to addressing questions on phytoplankton community succession, and further, relating that to meltwater over the growth season. Although samples are limited to ship-visited locations, involving more ships can extend the spa-

TABLE 1. Sampling results of three seasons (2016–2019).

	2016–2017	2017–2018	2018–2019
Season Start–End Dates	Nov 16, 2016–Mar 1, 2017	Nov 13, 2017–Mar 18, 2018	Nov 2, 2018–Mar 19, 2019
Sites Visited	12	15	12
Highest Frequency Sampling at One Site	12	13	15
Total Samples Collected (including replicates collected in tandem by lead researcher)	38	122	82
Number of Tour Operators Participating	2	6	7
Number of Vessels	2	5	8
Operator Name, Vessel Name	G-Adventures, M/V Expedition Polar Latitudes, M/V Hebridean Sky	Antarctica21, M/V Hebridean Sky G-Adventures, M/V Expedition Lindblad Expeditions, M/V Orion Polar Latitudes, M/V Hebridean Sky Private Charter, M/V Hans Explorer Quixote Expeditions, M/V Ocean Tramp	Antarctica21, M/V Ocean Nova Cheesemans' Ecology Safaris, M/V Ioffe G-Adventures, M/V Expedition Hurtigruten, M/V Midnatsol Polar Latitudes, M/V Hebridean Sky and M/V Island Sky Ocean Expeditions, M/V Australis Quixote Expeditions, M/V Hans Hansson
Number of Feedback Surveys Received	0	43	38

tial and temporal sampling.

Samples collected from November to March allow us for the first time to obtain seasonal data from these previously underexplored nearshore sites along the WAP in a cost-effective way. The results to date (Figures 5 and 6; Mascioni et al., 2019) are more encouraging than expected, with unknown species being discovered. Although the seasonal progression follows the expected response to day-length changes, there is large variability in the timing of abundances of different taxa. We expect this variability is in part due to physical properties, particularly those related to meltwater input from the glaciers (Dierssen et al., 2002). We will be able to test this

hypothesis with further analysis of data collected during subsequent seasons.

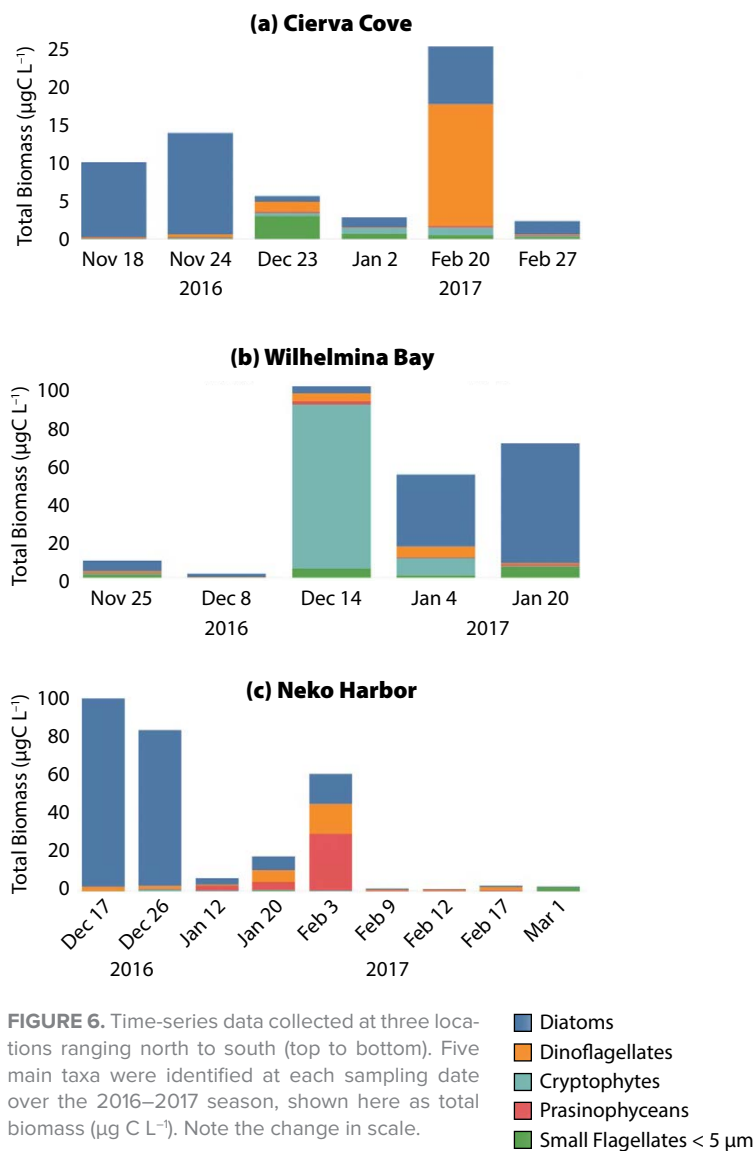
Sampling methods chosen for FjordPhyto avoid the need for ultra-freezer space (e.g., liquid nitrogen) to store and transport easily-degradable biological material. Therefore, compromises were made as to what types of data could be collected to best address our scientific aims. We consider surface sampling to be representative of the mixed layer phytoplankton (Garibotti et al., 2005; Pan et al., 2019), albeit some error is expected and will be addressed as time and instrumentation permits. This project would additionally benefit from analysis of inorganic nutrients and chlorophyll concentrations; however, samples must remain frozen

until analysis. To best address the objective of determining seasonal and inter-annual intrusion of meltwater through salinity data, a first-order effort will be based on salinity and optics, as developed by Pan et al. (2019). Further efforts to quantify the fraction of meltwater from sea ice versus glacial melt requires $\delta^{18}\text{O}$ oxygen isotope analysis (Meredith et al., 2013) and is considered in planning for future sampling efforts.

Building an Antarctic CS community relies on support from tour operators, staff, and travelers. Within the travel industry, CS projects must be integrated into an already full schedule of activities. FjordPhyto was designed to fit within a one-hour time window that would complement normal operations. If CS programs are to be successful on board, staff need to be given time to make projects a priority.

A unique problem in this collaboration is the frequent turnover and rotation of staff mid-season. Because these remote regions lack a reliable Internet connection, researchers must speak with all CS-identified staff at the beginning of the season to discuss potential issues that may arise such as broken or lost equipment and to avoid the “telephone effect” and the degradation of instructions. To ensure that instructions are clear, we also provide in-person training and detailed protocols for reference once the season is underway.

The main consensus from many CS practitioners and participants emphasizes the importance of feedback from the scientists themselves. FjordPhyto results are shared through putting post-trip materials online and distributing annual reports to the tour operators, who may distribute these materials directly to travelers. It is important that operators and CS participants understand the timeline of the scientific process as well. It may take months to years to fully process, analyze, and publish peer-reviewed work. Regardless, scientists can still provide simple updates each season so that staff can show travelers the impacts of authentic scientific endeavors.



To ensure the growth and sustainability of FjordPhyto partnerships, we rely on frequent feedback from staff. Between the 2017/2018 and 2018/2019 seasons, we received 81 feedback survey responses. Travelers who participated expressed greater appreciation for the role of science: “Participating in [CS] allowed me to be more than just a tourist. It also reinforced the Antarctic as a crucial part of climate change.” Because CS projects are a recent addition within the polar tourism industry, we have not yet quantitatively assessed attitudes toward science and the environment. This is something being considered by other researchers, and collaboration with social scientists may provide a possible metric for future growth. In addition to travelers’ personal testimonies, staff enthusiasm is equally important. As one staff person indicated, “If the passengers go home educated and have a new perspective on this planet—how they fit into it—and are motivated to tell their family and friends all about their experience in Antarctica, and are also motivated to change possible former environmentally destructive behavior, then our [CS] Program was an absolute success!”

Within the research and tour industry there is a paradigm shift to embrace CS as a valid research tool. Federal agencies are investing in CS projects, and polar tour operators are marketing CS projects as an attraction for travelers to remote regions (Walsh, 2019). CS projects are non-revenue-producing and need to rely on diverse funding sources to sustain them long term. By comparison to the costs of established national research programs, the real savings of a CS project is in both ship time and personnel time that ranges in hundreds of thousands of dollars over a five-month period. All other costs pertaining to sample analysis, access to the ship, salary, and graduate student tuition costs remain the same. Overall, savings could range between 60% and 80% when doing research from IAATO ships. To date, some of the FjordPhyto costs have been offset by federal grants; however, FjordPhyto relies on donations

and fellowships from individuals and foundations to carry out the research.

FjordPhyto can serve as a powerful low-cost tool for furthering research on phytoplankton communities. Results from the first year of sampling have already brought invaluable insights on phytoplankton composition and phenology in nearshore waters. Chlorophyll values in an unarmored dinoflagellate bloom at Danco Island are estimated at $\sim 27.5 \mu\text{g Chl-}a \text{ L}^{-1}$ (Mascioni et al., 2019), a concentration comparable to blooms near Anvers Island and Bransfield and Gerlache Straits (Rodriguez et al., 2002). However, the previous blooms have been related to other taxa, such as diatoms, prymnesiophytes, prasinophyceans, or cryptophytes, but never to dinoflagellates. Although dinoflagellates are known to dominate the phytoplankton community in Admiralty Bay during February (Lange et al., 2015), the concentration found (around $7 \times 10^3 \text{ cells L}^{-1}$) is two orders of magnitude lower than those found in this study ($9 \times 10^6 \text{ cells L}^{-1}$). Seasonally, the 2016 springtime phytoplankton biomass was dominated by diatoms (Figure 6), although numerically the most abundant group was the small flagellates ($< 5 \mu\text{m}$; Mascioni et al., 2019), as seen in WAP continental shelf waters (Garibotti et al., 2005). Abundant phytoplankton in nearshore waters are supported by relatively shallow mixed layers, usually $< 40 \text{ m}$ (Figure 5; Mitchell and Holm-Hansen, 1991). Our results suggest that numerically, the diatom spring bloom may not always develop in these nearshore waters (see Schloss et al., 2012). The biomass at WAP fjords seems to be dominated by planktonic diatoms, such as *Odontella weisflogii* that is well known in WAP productive environments (Varela et al., 2002; Garibotti et al., 2005), and it is somewhat different from that in King George Island coastal waters, where benthic diatoms constitute the highest biomass (Lange et al., 2015). However, with only one year of sampling, it is not possible to generalize. Low sea ice cover in the fjords and passages in 2016 may have caused a delay

in water-column stratification and prevented the formation of the classic diatom bloom, as observed in Marguerite Bay (Rozema et al., 2017).

CONCLUSIONS

With rapid rates of environmental change and significant growth in tourism to the WAP, we saw an opportunity for a joint effort among many stakeholders to answer critical science questions and obtain observations over time that would not be possible or affordable using traditional scientific approaches. While CS should not be considered a replacement for studies by scientists, FjordPhyto can enhance the scientific process and satisfy travelers wanting an enriching experience. Additionally, Antarctic policy and conservation are influenced by more than scientific data. Sharing in the scientific process increases the public understanding of science, allowing travelers to gain new perspective on ocean life. Participants may return home with a deeper understanding of the polar environment and could go on to influence the future protection of the icy continent. 🌐

REFERENCES

- Aas, E., J. Høkedal, and K. Sørensen. 2014. Secchi depth in the Oslofjord-Skagerrak area: Theory, experiments and relationships to other quantities. *Ocean Science* 10:177–199, <https://doi.org/10.5194/os-10-177-2014>.
- Bender, N.A., K. Crosbie, and H.J. Lynch. 2016. Patterns of tourism in the Antarctic Peninsula region: A 20-year analysis. *Antarctic Science* 28(03):194–203, <https://doi.org/10.1017/S0954102016000031>.
- Bernard, K.S., and D.K. Steinberg. 2013. Krill biomass and aggregation structure in relation to tidal cycle in a penguin foraging region off the Western Antarctic Peninsula. *ICES Journal of Marine Science* 70(4):834–849, <https://doi.org/10.1093/icesjms/fst088>.
- Bonney, R., C.B. Cooper, J. Dickinson, S. Kelling, T. Phillips, K.V. Rosenberg, and J. Shirk. 2009. Citizen science: A developing tool for expanding science knowledge and scientific literacy. *BioScience* 59(11):977–984, <https://doi.org/10.1525/bio.2009.59.11.9>.
- Brandini, F.P., and J. Rebello. 1994. Wind field effect on hydrography and chlorophyll dynamics in the coastal pelagial of Admiralty Bay, King George Island, Antarctica. *Antarctic Science* 6(4):433–442, <https://doi.org/10.1017/S0954102094000672>.
- Constable, A.J., J. Melbourne-Thomas, S.P. Corney, K.R. Arrigo, C. Barbraud, D.K. Barnes, N.L. Bindoff, P.W. Boyd, A. Brandt, D.P. Costa, and A.T. Davidson. 2014. Climate change and Southern Ocean ecosystems I: How changes in physical habi-

- tats directly affect marine biota. *Global Change Biology* 20(10):3,004–3,025, <https://doi.org/10.1111/gcb.12623>.
- Cook, A.J., P.R. Holland, M.P. Meredith, T. Murray, A. Luckman, and D.G. Vaughan. 2016. Ocean forcing of glacier retreat in the Western Antarctic Peninsula. *Science* 353(6296):283–286, <https://doi.org/10.1126/science.aae0017>.
- Corbisier, T.N., M.A. Petti, R.S. Skowronski, and T.A. Brito. 2004. Trophic relationships in the near-shore zone of Martel Inlet (King George Island, Antarctica): $\delta^{13}\text{C}$ stable-isotope analysis. *Polar Biology* 27(2):75–82, <https://doi.org/10.1007/s00300-003-0567-z>.
- Crall, A.W., G.J. Newman, T.J. Stohlgren, K.A. Holfelder, J. Graham, and D.M. Waller. 2011. Assessing citizen science data quality: An invasive species case study. *Conservation Letters* 4(6):433–442, <https://doi.org/10.1111/j.1755-263X.2011.00196.x>.
- Cusick, A.M. 2017a. Leveraging citizen science to understand glacial meltwater impacts on phytoplankton communities within fjords of the Western Antarctic Peninsula. Poster presented at the Gordon Research Conference on Polar Marine Science, March 26–31, 2017, Ventura, California.
- Cusick, A.M. 2017b. The invisible forest: Using citizen science to improve understanding of Antarctic phytoplankton. Paper presented at the AECO-IAATO Polar Field Staff Conference, October 1–4, 2017, Hveragerði, Iceland.
- Cusick, A.M. 2018a. FjordPhyto Guest Scientist A21 2017 w music. *YouTube* video. December 18, 2018, https://youtu.be/n1yKoFHni_U.
- Cusick, A.M. 2018b. Antarctic ambassadors learning to love fjord phytoplankton. Online presentation at the Association for Polar Early Career Scientists (APECS) 2018 Conference, May 16, 2018.
- Cusick, A.M. 2018c. FjordPhyto: Understanding Antarctic phytoplankton through citizen science. Paper presented at the Scientific Committee on Antarctic Research (SCAR) and the International Arctic Science Committee (IASC) Polar 2018 Conference, June 19–23, 2018, Davos, Switzerland.
- Cusick, A.M. 2019. Citizen Scientists in Antarctica a new approach to understand climate change affected environments with FjordPhyto. Paper presented at CitSci2019 Conference, March 13–17, 2019, Raleigh, North Carolina.
- De Lima, D.T., G.O. Moser, F.R. Piedras, L.C. da Cunha, D.R. Tenenbaum, M.B. Tenório, and J.J. Barrera-Alba. 2019. Abiotic changes driving microphytoplankton functional diversity in Admiralty Bay, King George Island (Antarctica). *Frontiers in Marine Science* 6:638, <https://doi.org/10.3389/fmars.2019.00638>.
- Dierssen, H.M., R.C. Smith, and M. Vernet. 2002. Glacial meltwater dynamics in coastal waters west of the Antarctic peninsula. *Proceedings of the National Academy of Sciences of the United States of America* 99(4):1,790–1,795, <https://doi.org/10.1073/pnas.032206999>.
- Edelson, D.C., S.L. Kirm, and Workshop Participants. 2018. Designing citizen science for both science and education: A workshop report. Technical Report No. 2018-01, BSCS Science Learning, Colorado Springs, CO.
- Edler, L., and M. Elbrächter. 2010. The Utermöhl method for quantitative phytoplankton analysis. Pp. 13–20 in *Microscopic and Molecular Methods for Quantitative Phytoplankton Analysis*. B. Karlson, C. Cusack and E. Bresnan, eds, Intergovernmental Oceanographic Commission of UNESCO. IOC Manuals and Guides, no. 55, UNESCO, Paris.
- Espinasse, B., M. Zhou, Y. Zhu, E.L. Hazen, A.S. Friedlaender, D.P. Nowacek, D. Chu, and F. Carlotti. 2012. Austral fall-winter transition of mesozooplankton assemblages and krill aggregations in an embayment west of the Antarctic Peninsula. *Marine Ecology Progress Series* 452:63–80, <https://doi.org/10.3354/meps09626>.
- Falkowski, P.G. 2002. The ocean's invisible forest. *Scientific American* 287(2):54–61, <https://doi.org/10.1038/scientificamerican0802-54>.
- Garibotti, I.A., M. Vernet, and M.E. Ferrario. 2005. Annually recurrent phytoplanktonic assemblages during summer in the seasonal ice zone west of the Antarctic Peninsula (Southern Ocean). *Deep Sea Research Part I* 52(10):1,823–1,841, <https://doi.org/10.1016/j.dsr.2005.05.003>.
- Grange, L.J., and C.R. Smith. 2013. Megafaunal communities in rapidly warming fjords along the West Antarctic Peninsula: Hotspots of abundance and beta diversity. *PLOS ONE* 8(12):e77917, <https://doi.org/10.1371/journal.pone.0077917>.
- Haberman, K.L., R.M. Ross, and L.B. Quetin. 2003. Diet of the Antarctic krill (*Euphausia superba* Dana): II. Selective grazing in mixed phytoplankton assemblages. *Journal of Experimental Marine Biology and Ecology* 283(1–2):97–113, [https://doi.org/10.1016/S0022-0981\(02\)00467-7](https://doi.org/10.1016/S0022-0981(02)00467-7).
- Henley, S.F., O.M. Schofield, K.R. Hendry, I.R. Schloss, D.K. Steinberg, C. Moffat, L.S. Peck, D.P. Costa, D.C. Bakker, C. Hughes, and P.D. Rozema. 2019. Variability and change in the west Antarctic Peninsula marine system: Research priorities and opportunities. *Progress in Oceanography* 173:208–237, <https://doi.org/10.1016/j.pocean.2019.03.003>.
- Hernando, M., I.R. Schloss, G. Malanga, G.O. Almandoz, G.A. Ferreyra, M.B. Aguiar, and S. Puntarulo. 2015. Effects of salinity changes on coastal Antarctic phytoplankton physiology and assemblage composition. *Journal of Experimental Marine Biology and Ecology* 466:110–119, <https://doi.org/10.1016/j.jembe.2015.02.012>.
- Hou, W., Z. Lee, and A.D. Weidemann. 2007. Why does the Secchi disk disappear? An imaging perspective. *Optics Express* 15(6):2,791–2,802, <https://doi.org/10.1364/OE.15.002791>.
- IAATO (International Association of Antarctica Tour Operators). 2009. *Report of the International Association of Antarctica Tour Operators 2008–2009 Under Article III (2) of the Antarctic Treaty*. ATCM32 IP33, Antarctic Treaty Consultative Meeting, Baltimore, USA, <https://iaato.org/past-iaato-information-papers>.
- IAATO. 2019a. *IAATO Overview of Antarctic Tourism: 2018–19 Season and Preliminary Estimates for 2019–20 Season*. ATCM 17, IP140, Antarctic Treaty Consultative Meeting, Prague, Czech Republic, <https://iaato.org/current-iaato-information-papers>.
- IAATO. 2019b. What is IAATO's Mission? <https://iaato.org/frequently-asked-questions#what-is-iaato-mission>.
- Kennicutt, M.C., S.L. Chown, J.J. Cassano, D. Liggett, R. Massom, L.S. Peck, S.R. Rintoul, J.W. Storey, D.G. Vaughan, T.J. Wilson, and W.J. Sutherland. 2014. Six priorities for Antarctic science. *Nature* 512(7512):23–25, <https://doi.org/10.1038/512023a>.
- Kim, H., H.W. Ducklow, D. Abele, E.M. Ruiz Barlett, A.G. Buma, M.P. Meredith, P.D. Rozema, O.M. Schofield, H.J. Venables, and I.R. Schloss. 2018. Inter-decadal variability of phytoplankton biomass along the coastal West Antarctic Peninsula. *Philosophical Transactions of the Royal Society A* 376(2122):20170174, <https://doi.org/10.1098/rsta.2017.0174>.
- Kozłowski, W., M. Vernet, and S.K. Lamerdin. 1995. Predominance of cryptomonads and diatoms in Antarctic coastal waters. *Antarctic Journal of the United States* 30:267–268.
- Lange, P.K., D.R. Tenenbaum, V.M. Tavano, R. Paranhos, and L.D.S. Campos. 2015. Shifts in microphytoplankton species and cell size at Admiralty Bay, Antarctica. *Antarctic Science* 27(3):225–239, <https://doi.org/10.1017/S0954102014000571>.
- Larsen, J.N., O.A. Anisimov, A. Constable, A.B. Hollowed, N. Maynard, P. Prestrud, T.D. Prowse, and J.M.R. Stone. 2014. Polar regions. Pp. 1,567–1,612 in *Climate Change 2014: Impacts, Adaptation, and Vulnerability: Part B. Regional Aspects*. Contribution of Working Group II to the Fifth Assessment Report of the Intergovernmental Panel on Climate Change. V.R. Barros, C.B. Field, D.J. Dokken, M.D. Mastrandrea, K.J. Mach, T.E. Bilir, M. Chatterjee, K.L. Ebi, Y.O. Estrada, R.C. Genova, B. Girma, E.S. Kissel, A.N. Levy, S. MacCracken, P.R. Mastrandrea, and L.L. White, eds, Cambridge University Press, Cambridge, United Kingdom and New York, NY, USA.
- Lee Cusick, A. 2017. "FjordPhyto: Antarctic Citizen Science Project." UC San Diego: Center for Marine Biodiversity and Conservation, <https://escholarship.org/uc/item/9m05m5g3>.
- Lin, Y., N. Cassar, A. Marchetti, C. Moreno, H. Ducklow, and Z. Li. 2017. Specific eukaryotic plankton are good predictors of net community production in the Western Antarctic Peninsula. *Scientific Reports* 7(1):14845, <https://doi.org/10.1038/s41598-017-14109-1>.
- Mascioni, M. 2019. Antarctic tourism as a research tool: Citizen Science monitoring phytoplankton community in the Western Antarctic Peninsula (WAP). Paper presented at the Scientific Committee on Antarctic Research's (SCAR) Standing Committee on Antarctic Humanities and Social Sciences (SC-HASS) April 3–5, 2019, Ushuaia, Argentina.
- Mascioni, M., G.O. Almandoz, A.O. Cefarelli, A. Cusick, M.E. Ferrario, and M. Vernet. 2019. Phytoplankton composition and bloom formation in unexplored nearshore waters of the western Antarctic Peninsula. *Polar Biology* 42:1,859–1,872, <https://doi.org/10.1007/s00300-019-02564-7>.
- Magnuson, J.J. 1990. Long-term ecological research and the invisible present. *BioScience* 40(7):495–501, <https://doi.org/10.2307/1311317>.
- McKinley, D.C., A.J. Miller-Rushing, H.L. Ballard, R. Bonney, H. Brown, S.C. Cook-Patton, D.M. Evans, R.A. French, J.K. Parrish, T.B. Phillips, and S.F. Ryan. 2017. Citizen science can improve conservation science, natural resource management, and environmental protection. *Biological Conservation* 208:15–28, <https://doi.org/10.1016/j.biocon.2016.05.015>.
- Mendes, C.R.B., V.M. Tavano, M.C. Leal, M.S. de Souza, V. Brotas, and C.A.E. Garcia. 2013. Shifts in the dominance between diatoms and cryptophytes during three late summers in the Bransfield Strait (Antarctic Peninsula). *Polar Biology* 36(4):537–547, <https://doi.org/10.1007/s00300-012-1282-4>.
- Meredith, M.P., H.J. Venables, A. Clarke, H.W. Ducklow, M. Erickson, M.J. Leng, J.M. Lenaerts, and M.R. van den Broeke. 2013. The freshwater system west of the Antarctic Peninsula: Spatial and temporal changes. *Journal of Climate* 26(5):1,669–1,684, <https://doi.org/10.1175/JCLI-D-12-00246.1>.
- Miller, J.D. 2016. *Civic Scientific Literacy in the United States in 2016*. A report prepared for the National Aeronautics and Space Administration by the University of Michigan, Ann Arbor, MI.
- Miller-Rushing, A., R. Primack, and R. Bonney. 2012. The history of public participation in ecological research. *Frontiers in Ecology and the Environment* 10(6):285–290, <https://doi.org/10.1890/110278>.

- Mitchell, B.G., and O. Holm-Hansen. 1991. Observations of modeling of the Antarctic phytoplankton crop in relation to mixing depth. *Deep Sea Research Part A* 38(8–9):981–1,007, [https://doi.org/10.1016/0198-0149\(91\)90093-U](https://doi.org/10.1016/0198-0149(91)90093-U).
- Moline, M.A., H. Claustre, T.K. Frazer, O. Schofield, and M. Vernet. 2004. Alteration of the food web along the Antarctic Peninsula in response to a regional warming trend. *Global Change Biology* 10(12):1,973–1,980, <https://doi.org/10.1111/j.1365-2486.2004.00825.x>.
- Nicol, S., A. Bowie, S. Jarman, D. Lannuzel, K.M. Meiners, and P. Van Der Merwe. 2010. Southern Ocean iron fertilization by baleen whales and Antarctic krill. *Fish and Fisheries* 11(2):203–209, <https://doi.org/10.1111/j.1467-2979.2010.00356.x>.
- Nowacek, D.P., A.S. Friedlaender, P.N. Halpin, E.L. Hazen, D.W. Johnston, A.J. Read, B. Espinasse, M. Zhou, and Y. Zhu. 2011. Super-aggregations of krill and humpback whales in Wilhelmina Bay, Antarctic Peninsula. *PLOS ONE* 6(4):e19173, <https://doi.org/10.1371/journal.pone.0019173>.
- Pan, B.J., M. Vernet, R.A. Reynolds, and B.G. Mitchell. 2019. The optical and biological properties of glacial meltwater in an Antarctic fjord. *PLOS ONE* 14(2):e0211107, <https://doi.org/10.1371/journal.pone.0211107>.
- Phillips, T., M. Ferguson, M. Minarchek, N. Porticella, and R. Bonney. 2014. *User's Guide for Evaluating Learning Outcomes in Citizen Science*. Cornell Lab of Ornithology, Ithaca, NY, https://www.birds.cornell.edu/citizenscience/wp-content/uploads/2018/10/USERS-GUIDE_linked.pdf.
- Rodríguez, F., M. Varela, and M. Zapata. 2002. Phytoplankton assemblages in the Gerlache and Bransfield Straits (Antarctic Peninsula) determined by light microscopy and CHEMTAX analysis of HPLC pigment data. *Deep Sea Research Part II* 49(4–5):723–747, [https://doi.org/10.1016/S0967-0645\(01\)00121-7](https://doi.org/10.1016/S0967-0645(01)00121-7).
- Ross, R.M., E.E. Hofmann, and L.B. Quetin, eds. 1996. *Foundations for Ecological Research West of the Antarctic Peninsula*, vol. 70. American Geophysical Union, Washington, DC, <https://doi.org/10.1029/AR070>.
- Ross, R.M., L.B. Quetin, K.S. Baker, M. Vernet, and R.C. Smith. 2000. Growth limitation in young *Euphausia superba* under field conditions. *Limnology and Oceanography* 45:31–43, <https://doi.org/10.4319/lo.2000.45.1.0031>.
- Rozema, P.D., H.J. Venables, W.H. Van De Poll, A. Clarke, M.P. Meredith, and A.G.J. Buma. 2017. Interannual variability in phytoplankton biomass and species composition in northern Marguerite Bay (West Antarctic Peninsula) is governed by both winter sea ice cover and summer stratification. *Limnology and Oceanography* 62(1):235–252, <https://doi.org/10.1002/lno.10391>.
- Saba, G.K., W.R. Fraser, V.S. Saba, R.A. Iannuzzi, K.E. Coleman, S.C. Doney, H.W. Ducklow, D.G. Martinson, T.N. Miles, D.L. Patterson-Fraser, and others. 2014. Winter and spring controls on the summer food web of the coastal West Antarctic Peninsula. *Nature Communications* 5, 4318, <https://doi.org/10.1038/ncomms5318>.
- Sailley, S.F., H.W. Ducklow, H.V. Moeller, W.R. Fraser, O.M. Schofield, D.K. Steinberg, L.M. Garzio, and S.C. Doney. 2013. Carbon fluxes and pelagic ecosystem dynamics near two western Antarctic Peninsula Adélie penguin colonies: An inverse model approach. *Marine Ecology Progress Series* 492:253–272, <https://doi.org/10.3354/meps10534>.
- Santora, J.A., and C.S. Reiss. 2011. Geospatial variability of krill and top predators within an Antarctic submarine canyon system. *Marine Biology* 158(11):2,527–2,540, <https://doi.org/10.1007/s00227-011-1753-0>.
- Sardet, C. 2015. *Plankton: Wonders of the Drifting World*. University of Chicago Press, <https://doi.org/10.7208/chicago/9780226265346.001.0001>.
- Schloss, I.R., D. Abele, S. Moreau, S. Demers, A.V. Bers, O. González, and G.A. Ferreyra. 2012. Response of phytoplankton dynamics to 19-year (1991–2009) climate trends in Potter Cove (Antarctica). *Journal of Marine Systems* 92(1):53–66, <https://doi.org/10.1016/j.jmarsys.2011.10.006>.
- Schofield, O., G. Saba, K. Coleman, F. Carvalho, N. Couto, H. Ducklow, Z. Finkel, A. Irwin, A. Kahl, T. Miles, and M. Montes-Hugo. 2017. Decadal variability in coastal phytoplankton community composition in a changing West Antarctic Peninsula. *Deep Sea Research Part I* 124:42–54, <https://doi.org/10.1016/j.dsr.2017.04.014>.
- Sear, D. 2018. Plankton BioBlitz | Antarctica | Lindblad Expeditions-National Geographic. *YouTube* video, January 8, 2018, <https://www.youtube.com/watch?v=ORvYzM6da0>.
- Shirk, J., H. Ballard, C. Wilderman, T. Phillips, A. Wiggins, R. Jordan, E. McCallie, M. Minarchek, B. Lewenstein, M. Krasny, and R. Bonney. 2012. Public participation in scientific research: A framework for deliberate design. *Ecology and Society* 17(2):29, <https://doi.org/10.5751/ES-04705-170229>.
- Smith, C.R., S. Mincks, and D.J. DeMaster. 2008. The FOOBANCs project: Introduction and sinking fluxes of organic carbon, chlorophyll-a and phytodetritus on the Western Antarctic Peninsula continental shelf. *Deep Sea Research Part II* 55(22):2,404–2,414, <https://doi.org/10.1016/j.dsr2.2008.06.001>.
- Thomson, R.E., and I.V. Fine. 2003. Estimating mixed layer depth from oceanic profile data. *Journal of Atmospheric and Oceanic Technology* 20(2):319–329, [https://doi.org/10.1175/1520-0426\(2003\)020<0319:EMLDFO>2.0.CO;2](https://doi.org/10.1175/1520-0426(2003)020<0319:EMLDFO>2.0.CO;2).
- Turner, J., H. Lu, I. White, J.C. King, T. Phillips, J.S. Hosking, T.J. Bracegirdle, G.J. Marshall, R. Mulvaney, and P. Deb. 2016. Absence of 21st century warming on Antarctic Peninsula consistent with natural variability. *Nature* 535(7612):411, <https://doi.org/10.1038/nature18645>.
- US Federal Government. 2019. The Federal Crowdsourcing and Citizen Science Toolkit, <https://www.citizenscience.gov/toolkit/#>.
- Varela, M., E. Fernandez, and P. Serret. 2002. Size-fractionated phytoplankton biomass and primary production in the Gerlache and south Bransfield Straits (Antarctic Peninsula) in Austral summer 1995–1996. *Deep Sea Research Part II* 49(4-5):749–768, [https://doi.org/10.1016/S0967-0645\(01\)00122-9](https://doi.org/10.1016/S0967-0645(01)00122-9).
- Vernet, M., D. Martinson, R. Iannuzzi, S. Stammerjohn, W. Kozłowski, K. Sines, R. Smith, and I. Garibotti. 2008. Primary production within the sea-ice zone west of the Antarctic Peninsula: I—Sea ice, summer mixed layer, and irradiance. *Deep Sea Research Part II* 55(18–19):2,068–2,085, <https://doi.org/10.1016/j.dsr2.2008.05.021>.
- Walsh, N. 2019. See the world and make a difference on a 'Citizen Science' Expedition. *The New York Times*, <https://www.nytimes.com/2019/03/27/travel/see-the-world-and-make-a-difference-on-a-citizen-science-expedition.html>.
- Wernand, M.R. 2010. On the history of the Secchi disc. *Journal of the European Optical Society-Rapid Publications*, vol. 5, <https://doi.org/10.2971/jeos.2010.10013s>.
- Wiggins, A., G. Newman, R.D. Stevenson, and K. Crowston. 2011. Mechanisms for data quality and validation in citizen science. Pp. 14–19 in *2011 IEEE Seventh International Conference on e-Science Workshops*, December 5–8, 2011, Stockholm, Sweden, IEEE, <https://doi.org/10.1109/eScienceW.2011.27>.

ACKNOWLEDGMENTS

This research was carried out with support of Public Participation in STEM Research (PPSR) awarded to NSF PLR-1443705 “Collaborative Research: Fjord Ecosystem Structure and Function on the West Antarctic Peninsula—Hotspots of Productivity and Biodiversity? (FjordEco).” Additional funding was received through the Scripps Institution of Oceanography Mullin Fellowship, the Hurtigruten Foundation, and generous donors. We also thank B. Jack Pan for help with graphs. We would like to acknowledge IAATO tour operators, crew, staff, and travelers who participated: Antarctica 21, Cheesemans' Ecological Safaris, G Adventures, Hanse Explorer, Hurtigruten, Lindblad Expeditions, Ocean Expeditions, Polar Collective, Polar Latitudes, and Quixote Expeditions, without whom this project would not be possible. We thank three anonymous reviewers for their comments, which improved the manuscript.

AUTHORS

Allison M. Cusick (all178@ucsd.edu) is a graduate student in the Integrative Oceanography Division, Scripps Institution of Oceanography, University of California San Diego, La Jolla, CA, USA. **Robert Gilmore** and **Annette Bombosch** both work at the secretariat of The Polar Citizen Science Collective, Thurlaston, Leicestershire, UK. **Martina Mascioni** is a doctoral fellow and **Gastón O. Almandoz** is a researcher, both in the División Fecología, Facultad de Ciencias Naturales y Museo, Universidad Nacional de La Plata, La Plata, Argentina, and Consejo Nacional de Investigaciones Científicas y Técnicas (CONICET), Ciudad Autónoma de Buenos Aires, Argentina. **María Vernet** is Researcher Emerita, Integrative Oceanography Division, Scripps Institution of Oceanography, University of California San Diego, La Jolla, CA, USA.

ARTICLE CITATION

Cusick, A.M., R. Gilmore, A. Bombosch, M. Mascioni, G.O. Almandoz, and M. Vernet. 2020. Polar tourism as an effective research tool: Citizen science in the Western Antarctic Peninsula. *Oceanography* 33(1), <https://doi.org/10.5670/oceanog.2020.101>.

COPYRIGHT & USAGE

This is an open access article made available under the terms of the Creative Commons Attribution 4.0 International License (<https://creativecommons.org/licenses/by/4.0/>), which permits use, sharing, adaptation, distribution, and reproduction in any medium or format as long as users cite the materials appropriately, provide a link to the Creative Commons license, and indicate the changes that were made to the original content.