



## Research Article

# Water quality assessment of a temperate urban lagoon using physico-chemical and biological indicators



Diamela Gianello<sup>1,2,4</sup> · Elizabeth Ávila-Hernández<sup>1</sup> · Irene Aguer<sup>1</sup> · Melina Celeste Crettaz-Minaglia<sup>1,3,4</sup>

© Springer Nature Switzerland AG 2019

## Abstract

The aim of this work was to assess the water quality of the urban lagoon located in Parque Unzué (Guauguaychú, Argentina) using physico-chemical and bacteriological parameters, the composition of micro-phytoplankton assemblages and functional groups (FGs) and to evaluate their annual variability. Twenty-two samplings in three stations were collected between 2015 and 2018, physico-chemical and bacteriological parameters were measured and micro-phytoplankton (20–200 µm) was collected, identified to the lowest taxonomic level and classified in functional groups. Physico-chemical and bacteriological parameters indicated that the lagoon presented high organic pollution and no significant differences ( $p < 0.05$ ) were observed between sampling stations, but there were differences between the annual periods of sampling. In general, a detriment to water quality can be seen from 2015 to 2018. This was observed in the simplified water quality index (SWQI) values. Micro-phytoplankton assemblages were compounded by 48 genera distributed into Bacillariophyceae (19), Chlorophyceae (12), Cyanophyceae (7), Euglenophyceae (5), Conjugatophyceae (Zygnematophyceae) (3) and Dinophyceae (1). The Chlorophyceae group was the most sensitive to changes in the system and specifically, the genus *Chlorella* was an early warning indicator. Nineteen FGs were identified, and the majority were characteristic of hypereutrophic, small, turbid and highly enriched lagoons. We conclude that the lagoon located in Parque Unzué showed permanent organic pollution that kept increasing throughout the study time and therefore, that it is possible that the current conditions lead to the collapse of the system.

**Keywords** Guauguaychú · Parque Unzué · Functional groups · Organic pollution · Phytoplankton · Guanotrophy

## 1 Introduction

Urban lagoons are particular ecosystems present in many cities and part of the urban ecology [50]. Some have a natural or anthropogenic origin with several functions, such as increasing the life quality, mitigating the effects of the urban climate [50, 58, 67] and being a biodiversity refuge [17]. However, urban water bodies are subject to

increasingly negative environmental impacts [63]. They are usually affected by habitat fragmentation and organic pollution [17, 25, 85] that impact in the composition and distribution of the species assemblages and which assemblages can therefore be considered as urban health indicators [38]. More recently, the guanotrophy (nutrient addition by bird excrements) effects on water quality have been the subject of investigations [92].

**Electronic supplementary material** The online version of this article (<https://doi.org/10.1007/s42452-019-0469-5>) contains supplementary material, which is available to authorized users.

✉ Melina Celeste Crettaz-Minaglia, [cretta.melina@uader.edu.ar](mailto:cretta.melina@uader.edu.ar) | <sup>1</sup>Facultad de Ciencia y Tecnología, Laboratorio de Indicadores Biológicos y Gestión Ambiental (IBGA), Universidad Autónoma de Entre Ríos (UADER), Rocamona 117, Guauguaychú, Entre Ríos, Argentina. <sup>2</sup>Grupo de Ecología de Sistemas Acuáticos a escala de Paisaje, INIBIOMA, Universidad Nacional del Comahue-CONICET, Bariloche, Argentina. <sup>3</sup>Instituto de Ciencias, Área de Biología y Bioinformática, Universidad Nacional de General Sarmiento (UNGS), Los Polvorines, Argentina. <sup>4</sup>Consejo Nacional de Investigaciones Científicas y Tecnológicas, Buenos Aires, Argentina.



SN Applied Sciences

(2019) 1:470

| <https://doi.org/10.1007/s42452-019-0469-5>

Received: 2 January 2019 / Accepted: 8 April 2019

Published online: 19 April 2019

SN Applied Sciences  
A SPRINGER NATURE journal

On the other hand, the phytoplankton is an extremely diverse polyphyletic group of photosynthetic protists and cyanobacteria, which generates input to food webs and drives the biogeochemical cycle [73, 77]. The phytoplankton assemblage changes can reflect the presence of pollutants, especially nutrients [41] which cause an increase in the micro-phytoplankton abundance [1, 52] and in the tolerant species [56] and a decrease in the sensitive species [26]. These assemblages are good indicators due to respond quickly to ecological changes, due to their fast growth rates [32, 75, 84, 87] and permit detecting any possible alteration in water quality [13, 23, 54, 75]. Traditional phytoplankton monitoring is based on biomass, chlorophyll-a or accessory pigments and composition and abundance of species [2, 7, 31, 53]. More recently, the approach provided by functional groups began to be used. These classifications cluster species with common traits and similar responses to environmental changes and have been proposed for phytoplankton by several authors, such as Abonyi et al. [2], Beamud et al. [6], Kruk et al. [47], Padišák et al. [64], Reynolds [70], Reynolds et al. [71] and Salmaso and Padišák [78]. A particularly influential functional classification is that proposed by Reynolds et al. [71] since it is based not only on the individual functional traits but also on the ranges of the environmental conditions in which the species are found. Kruk et al. [47] have proposed an alternative classification based on morphological aspects. Following these approaches, trait-based approaches have been increasingly applied as a tool to explain and predict the response of phytoplankton species to environmental conditions, both in marine and continental aquatic systems [6, 48].

It is possible to find numerous scientific studies on urban lagoons in the world [33, 59, 63, 80], showing the importance they have in the cities. Conversely, the Latin American cities have given little importance to these ecosystems in urban ecology, despite the accelerated losses of biodiversity [83]. Argentina has a significant diversity of urban lagoons and the studies carried out there have focused mainly on epidemiological aspects [27]. Therefore, the phytoplankton studies in these ecosystems are scarce [15, 29, 34, 35, 60–62].

The purpose of this work was to assess the water quality of the lagoon located in Parque Unzué using physico-chemical and bacteriological parameters, the composition of micro-phytoplankton assemblages and functional groups and to evaluate the annual variability of all parameters in the study area. Our hypothesis is that the lagoon presents organic pollution generating alterations on phytoplankton assemblages and that it is possible to find early warning indicators.

## 2 Materials and methods

### 2.1 Study area description

The urban lagoon in Parque Unzué (33°00'46"S–58°29'24"W, Fig. 1) is located in a multi-purpose park of (Guauguaychú) corresponding to Mesopotamian Pampas [55]. The average rainfall in the city of Guauguaychú is of approximately 1257.48 mm (1999–2015) [57]. In the highlands, the Guauguaychú river basin has moderately good, deep, dark-colored soils with a dense argillic clay–silt horizon, medium surface runoff with fairly slow permeability, deep water table and erosion light water. On the banks, the soils are deep, with very slow surface runoff and slow permeability without erosive risk [39, 42].

The study area is a small, eutrophic and non-stratified lagoon with high turbidity corresponding to a polymictic lagoon. It has a depth of 1.7 m, a perimeter of 0.82 km, an area of 2.75 km<sup>2</sup>, a maximum length of 0.32 km and a maximum width of 0.14 km. Its euphotic zone ( $Z_{eu}$ ) values vary between 0.36 and 1.27 m. It has a recreational use, without direct human contact [34, 86] and it is used as a refuge for biodiversity. Water input comes from the rain, from possible overflows of the Guauguaychú river [35] and from artificial replacements to compensate for water level losses. The guantrophy is a permanent nutrient and an organic matter input in the system. Moreover, during the summer, there is usually a punctual contribution of wastewater from a campsite [17] and the guantrophy can be increased by migratory birds. Regarding this latter point, there are native and exotic species of flora and fauna (Supplementary material), particularly, an important diversity of birds (34 species) can be found, including migratory species such as the white heron (*Egretta thula* and *Ardea alba*) and cattle heron (*Bubulicus ibis*). In addition, 30 phytoplankton genera including invasive genus *Ceratium* and potentially toxic cyanobacteria [35] and 13 macroinvertebrate taxa [17] were found.

### 2.2 Selection of sampling stations and frequency

A study area exploration was carried out, and then, three sampling stations representative with easy and permanent access were selected. In each sampling stations, 22 water samples were taken between May 2015 and May 2018, performing at least one sampling per climate station. The frequency was influenced by climatic conditions and accessibility of the study area. During intense rainfall periods and a level increase of the Guauguaychú river, the study area can be flooded once or twice a year.

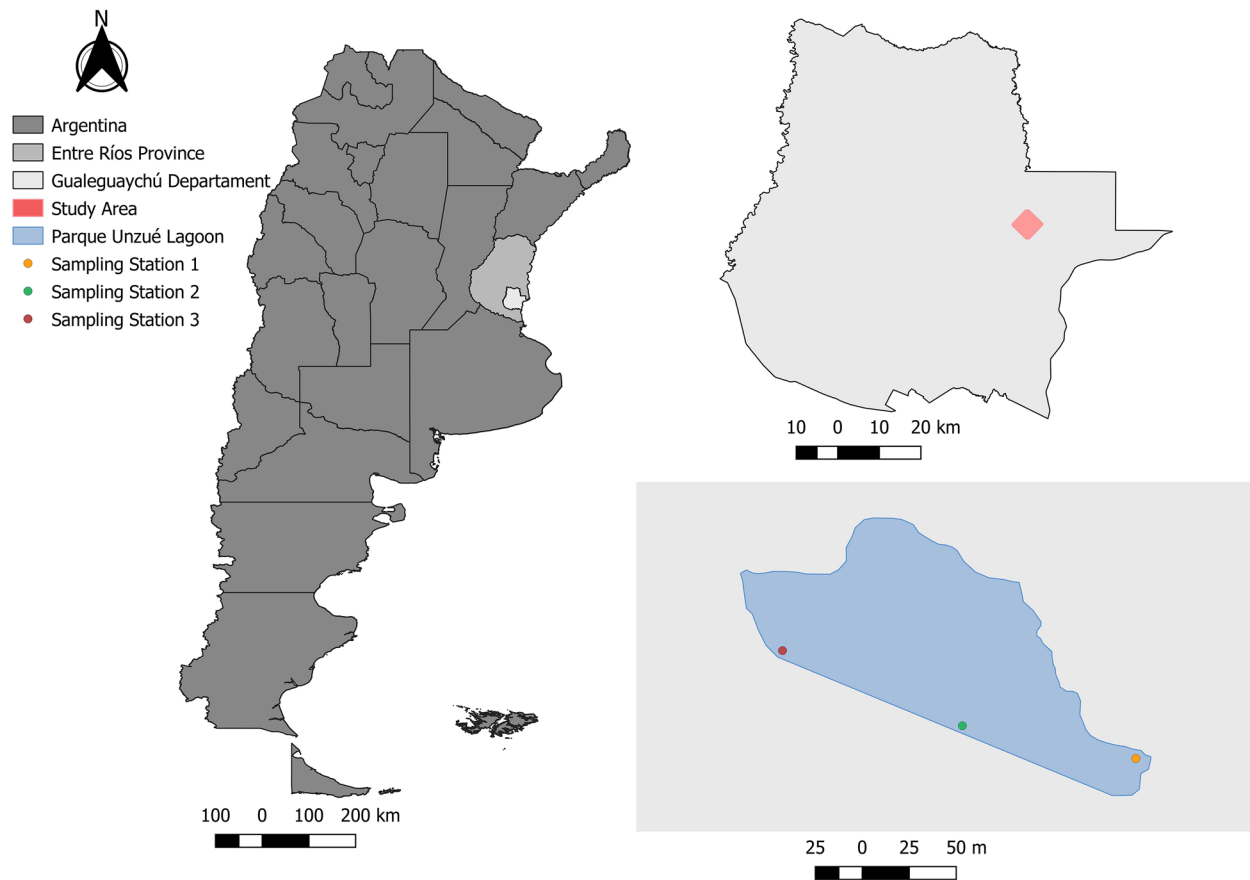


Fig. 1 Description of the study area (QGIS 3.2, 2018)

### 2.3 In situ measurement and field data collection

Physico-chemical variables were measured in situ, namely pH, water and air temperature, electric conductivity (EC) with Hanna HI991003 portable meter and dissolved oxygen (DO) with YSI model 55 were measured. Meters were calibrated beforehand [4].

A standard Secchi disk (SD) of 30-cm-diameter was used to measure the water transparency and total depth. Moreover, in each sampling station, 1-L of lagoon water was collected using clean amber glass bottles in order to determine physico-chemical parameters which are described below. For bacteriological parameters, 250 mL of water was collected using a plastic sterile bottle. Furthermore, qualitative micro-phytoplankton (20–200  $\mu\text{m}$ ) samples were collected using a Zeppelin net [82] of pore = 30  $\mu\text{m}$  and fixed with 50% Transeau solution [24] according to Gianello et al. [35]. Samples were conserved at refrigeration temperature (4  $^{\circ}\text{C}$ ) [72] until their analysis.

Additionally, rain data (Dirección de Hidráulica de Entre Ríos) and the hydrometric level (HL) of the Gueleguaychú river (Prefectura Naval Argentina) were obtained from databases of those institutions.

### 2.4 Physico-chemical and bacteriological tests

#### 2.4.1 Phosphorus

Total phosphorus (TP) was measured in unfiltered samples which were digested by heat in an acid medium [4]. Soluble reactive phosphorus (SRP) was measured in filtered samples with a filter of 0.45  $\mu\text{m}$  [4]. Both TP and SRP were measured as a duplicate using stannous chloride method with a spectrophotometer (UV-VIS ZUZI 4211/50) at 690 nm [4]. Previously, a calibration curve was performed in the range 0–1000 expressed as  $\mu\text{molP-PO}_4^{3-}/\text{L}$ .

#### 2.4.2 Chemical oxygen demand

Chemical oxygen demand (COD) was measured in order to obtain a total organic matter indicator of the study area. COD was measured in unfiltered samples which were digested by heat in an acid medium by reflux closed [4]. Samples were measured for a duplicate by spectrophotometric method (UV-VIS ZUZI 4211/50) at 600 nm [4]. Previously, a calibration curve was performed in the range 20–900 expressed as  $\mu\text{gO}_2/\text{L}$ .

### 2.4.3 Chlorophyll-a

Chlorophyll-a (chl-a) was measured in accordance with Crettaz-Minaglia et al. [18] using a spectrophotometer (UV-VIS ZUZI 4211/50) after extraction with 100% methanol, at 665 and 750 nm before and after acidification with 1 N HCl, following the technique of Marker et al. [51]. The concentration of chl-a was expressed in  $\mu\text{g/L}$  and was an indicator of phytoplankton biomass of the lagoon.

### 2.5 Total mesophilic aerobic and coliforms bacteria

Total mesophilic aerobic bacteria (TMAB) were determined by the method of the fluid plate [4]. Serial dilutions of each sample were made and plated for duplicate with plate count agar (Britania) [72] so as to get between 30 and 300 colonies [4]. Plates were incubated for 48 h at  $35\text{ }^{\circ}\text{C} \pm 1\text{ }^{\circ}\text{C}$  in a dark stove [4], and the colonies' number was multiplied by the dilution factor and reported as colony forming units (CFU)/100 mL [22].

Furthermore, total coliforms (TC) were measured by a method of multiple tubes [4]. Lactose-fermenting colonies from MacConkey (Britania) broth were presumed to be total coliform bacteria and were subject to further testing [22]. Serial dilutions of each water sampling were made and put in tubes for a duplicate [72]. They were incubated for 48 h at  $35\text{ }^{\circ}\text{C} \pm 1\text{ }^{\circ}\text{C}$  in a dark stove [4]. Tubes were recorded as positive when they presented gas inside the Durham bells and a color change from purple to yellow [72]. The concentration of TC was expressed in MPN.100 mL<sup>-1</sup>.

### 2.6 Micro-phytoplankton

Samples were observed with an optical microscope Olympus® at 40–100 X, and the micro-phytoplankton was classified up to the gender taxonomic level following specific keys of each group according to Gianello et al. [35], Komárek et al. [45] for Chlorophyceae, Komárek and Anagnostidis [43, 44] for Cyanophyceae, Krammer and Lange-Bertalot [46] and Zalocar de Domitrovic and Maidana [93] for Bacillariophyceae and Tell and Conforti [88] for Euglenophyceae.

### 2.7 Data analysis

Field data were analyzed with Paleontological Statistic (PAST) [37] and Systat Software Inc® version 12.0. Descriptive statistics were used to characterize the variability of physico-chemical and bacteriological parameters. Previously, Shapiro–Wilks normality test was performed, and then, the nonparametric Kruskal–Wallis test with significance level  $\alpha < 0.05$  was also carried out over all the data

set and, finally, Mann–Whitney pairwise comparison test was performed to compare sampling stations and the annual sampling periods.

Moreover, water quality was determined using a simplified water quality index (SWQI) (Eq. 1 modified to [16]).

$$\text{SWQI} = t * \left( \sum Vi * Pi \right) \quad (1)$$

where  $V_i$  is a transformation function and  $P_i$  is the assigned importance of the parameters. The parameters used were:  $t$  = temperature, EC = electric conductivity, DO = dissolved oxygen, COD = chemical oxygen demand and SD = Secchi disk. Index allowed to classify the water quality in: very poor (SWQI = 0–10), poor (SWQI = 11–30), regular (SWQI = 31–70), good (SWQI = 71–94) and very good (SWQI = 95–100).

On the other hand, the micro-phytoplankton richness was calculated and classified in the functional group (FG) according to Padišák et al. [64] and Reynolds et al. [71]. Statistical analysis of multiple correlations between micro-phytoplankton functional groups and water parameters was made using a principal component analysis (PCA) and a correlation matrix with iterative imputation [49] as input. Previously, the data were normalized. Moreover, richness comparison in each sampling station was made using Bray–Curtis cluster analysis (1957) [28].

## 3 Results

### 3.1 Description of parameters

In relation to hydrological variables, the cumulative rain of the week before the sampling varied between 0 mm (28/11/2015, 15/11/2017) and 95 mm (23/12/2017) and the cumulative rain of the month before the sampling varied between 0 mm (28/11/2015) and 359 mm (20/01/2017). The minimum HL of the Gualeguaychú river was 1.02 m (30/05/2015) and the maximum 3.02 m (17/10/2015) (Table 1).

On the other hand, the physico-chemical and bacteriological parameter description (median,  $M$  = maximum,  $m$  = minimum and SD = standard deviation) is shown in Table 1, and the data were separated in periods of study (years). In the same table, it can be observed which was the median of these parameters, used as a measure of central tendency because the parameters measured did not present normal distribution according to the Shapiro Wilks normality test. The water parameters indicated that temperature varied, according to temperate climatic stations, between 12.4 and 30.0 °C, pH varied between around slightly acid values (5.75) and slightly alkaline values (9.05), with low EC (127  $\mu\text{S cm}^{-1}$  and 783  $\mu\text{S cm}^{-1}$ ) (Table 1). DO

**Table 1** Statistics description (median, *M*= maximum, *m*= minimum and *SD*=standard deviation) of the physico-chemical and bacteriological parameters

	Temperature °C	pH	EC µS cm <sup>-1</sup>	DO mg L <sup>-1</sup>	TD m	SD m	Chl-a µg L <sup>-1</sup>	SRP µmol L <sup>-1</sup>	PT µmol L <sup>-1</sup>	COD mg L <sup>-1</sup>	TMAB UFC.100 mL <sup>-1</sup>	TC NMP.100 mL <sup>-1</sup>	CRW mm	CRM mm	HL m
<b>Year 1</b>															
Median	20.9 <sup>a</sup>	7.33 <sup>*</sup>	460 <sup>a</sup>	4.76 <sup>a</sup>	0.50 <sup>a</sup>	0.30 <sup>a</sup>	132 <sup>a</sup>	8.26 <sup>a</sup>	18.4 <sup>a</sup>	110.6 <sup>a</sup>	5.65E+05 <sup>a</sup>	2.30E+03 <sup>a</sup>	3.60	67.0	1.98
<i>m</i>	12.4	6.71	290	1.53	0.30	0.20	65.9	3.06	3.69	65.79	1.30E+04	3.00E+02	0.00	0.00	1.02
<i>M</i>	29.2	8.54	783	10.80	0.70	0.45	474	79.7	82.9	364.0	1.85E+07	4.60E+04	67.6	148	3.02
<i>DS</i>	5.27	0.46	136	2.84	0.13	0.06	140	29.1	30.3	76.50	4.01E+06	1.46E+04	22.7	51.1	0.59
<b>Year 2</b>															
Median	21.3 <sup>a</sup>	7.21 <sup>a</sup>	272 <sup>a</sup>	3.70 <sup>a</sup>	0.49 <sup>a</sup>	0.25 <sup>a</sup>	126 <sup>a</sup>	27.8 <sup>a</sup>	30.7 <sup>a</sup>	110.6 <sup>a</sup>	1.46E+06 <sup>a</sup>	4.30E+03 <sup>a</sup>	14.6	104	1.64
<i>m</i>	12.7	6.87	127	0.95	0.24	0.15	63.2	0.988	9.75	50.86	6.30E+05	3.00E+02	3.00	70.6	1.31
<i>M</i>	30.4	9.05	783	14.4	1.68	0.40	664	46.4	47.3	170.3	5.63E+14	4.60E+04	73.4	359	2.40
<i>SD</i>	5.73	0.67	245	3.73	0.44	0.06	149	13.8	12.8	34.89	1.37E+14	9.82E+03	26.4	103	0.41
<b>Year 3</b>															
Median	21.0 <sup>a</sup>	6.84 <sup>b</sup>	510 <sup>a</sup>	2.61 <sup>b</sup>	0.51 <sup>a</sup>	0.28 <sup>a</sup>	23.2 <sup>b</sup>	11.1 <sup>b</sup>	25.6 <sup>a</sup>	236.8 <sup>a</sup>	3.80E+05 <sup>a</sup>	4.60E+03 <sup>a</sup>	25.6	137	1.82
<i>m</i>	13.0	5.75	270	1.86	0.33	0.15	4.20	2.11	7.10	77.70	7.00E+04	3.00E+02	0.00	16.5	1.24
<i>M</i>	28.0	7.53	596	5.79	0.90	0.53	211	24.7	74.6	1759	4.00E+06	1.10E+06	95.0	172	2.58
<i>SD</i>	5.69	0.44	110	1.37	0.16	0.10	60.6	6.43	23.7	533.5	1.06E+06	2.73E+05	42.6	67.9	0.46

Field data were separated by the period of study. *TD* total depth, *SD* Secchi disk, *CRW* cumulative rainfall of a previous week, *CRM* cumulative rainfall of a previous month, *HL* hydrometric level

Different letters are significant differences (*p* < 0.05)

values had high variability between anoxic ( $0.95 \text{ mg L}^{-1}$ ) and oversaturated ( $14.33 \text{ mg L}^{-1}$ ) both values being too anomalous (Table 1) with a median to  $4.76 \text{ mg L}^{-1}$ .

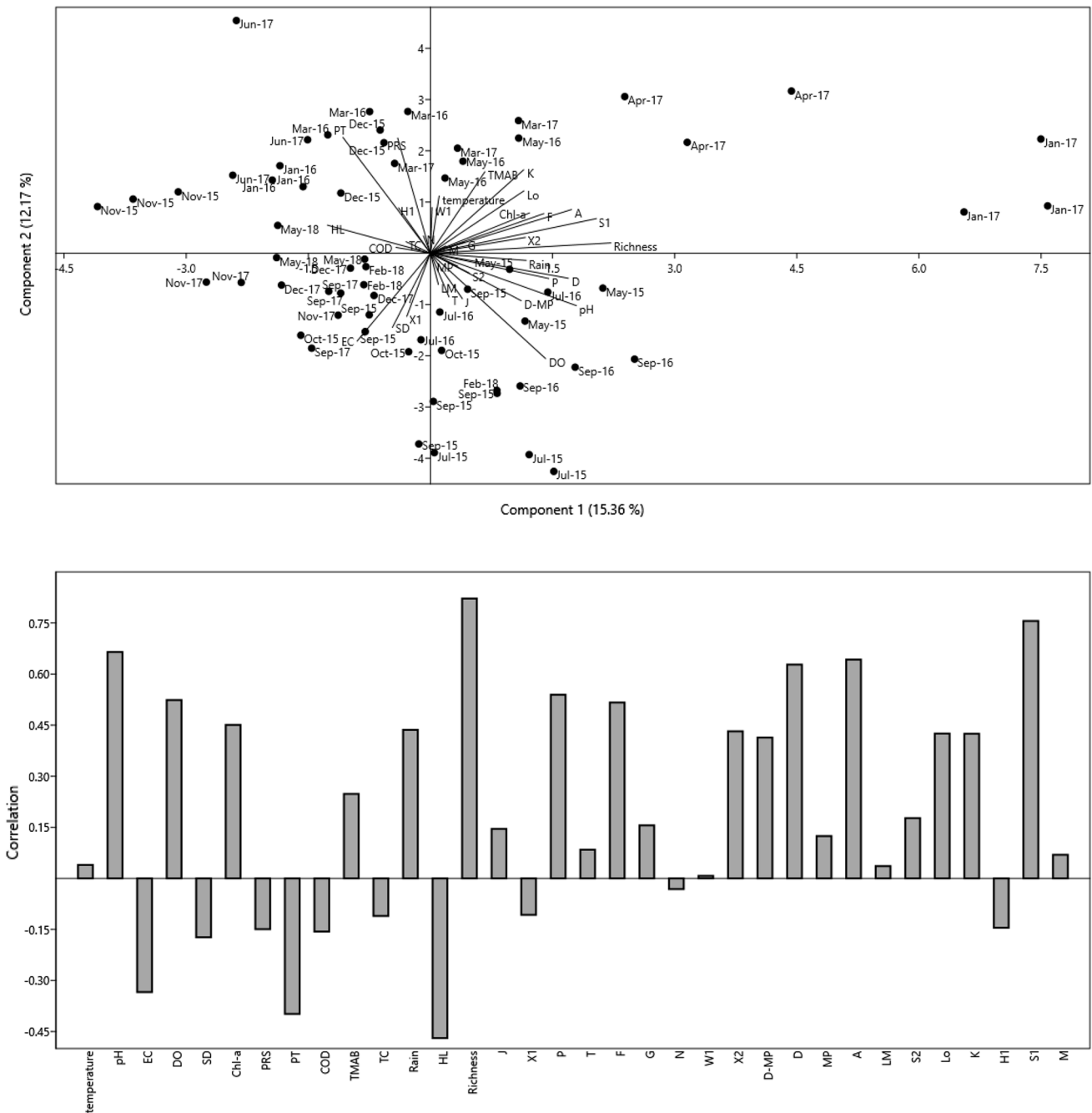
The phosphorus nutrients values were high during all the period of study (Table 1) and the main proportion was available (SRP) for the micro-phytoplankton and bacteria. Therefore, it is possible that phytoplankton had not been restricted by this nutrient. In Table 1, it can be observed that the minimum concentrations of SRP and TP were  $0.988 \mu\text{mol L}^{-1}$  and  $3.69 \mu\text{mol L}^{-1}$  and the maximum concentrations were  $79.7 \mu\text{g L}^{-1}$  and  $82.9 \mu\text{g L}^{-1}$ , respectively. COD values were too high and varied between 50.86 and  $1759 \text{ mg L}^{-1}$  with a median of  $110.6 \text{ mg L}^{-1}$ . This indicates that the DO concentrations were not enough to degrade the organic matter of the aquatic system. Chl-a varied widely between 4.20 and  $664 \mu\text{g L}^{-1}$  with a median of  $132 \mu\text{g L}^{-1}$ . Regarding bacteriological parameters, the lagoon in Parque Unzué had a very high bacteriological charge. TMAB varied between  $1.30\text{E}+04 \text{ CFU.100}$  and  $1.85\text{E}+07 \text{ CFU.100 mL}^{-1}$  with a median of  $5.65\text{E}+05 \text{ CFU.100 mL}^{-1}$ , and CT varied between  $3.00\text{E}+02 \text{ MPN.100}$  and  $4.60 \text{ E}+04\text{MPN.100 mL}^{-1}$  with a median of  $2.30\text{E}+03 \text{ MPN.100 mL}^{-1}$ .

Figure 2 shows that phosphorus, COD, TC and hydro-metric level correlated positively between them, but correlated negatively with the cumulative rain, pH and DO. On the other hand, chl-a, richness, temperature and TMAB correlated positively between them, but correlated negatively with SD and EC. In the parameter comparison, no significant differences ( $p < 0.05$ ) were found between sampling stations. During annual sampling periods, no significant differences were found either in none of the following environmental parameters: temperature, EC, TP, COD, TMAB and CT. However, very significant differences ( $p < 0.001$ ) were found between the annual sampling periods on chl-a ( $p = 0.001$ ), pH ( $p = 1.7\text{E}-5$ ) and SRP ( $p = 4.8\text{E}-4$ ) and significant differences ( $p < 0.05$ ) on DO ( $p = 0.04$ ). Chl-a, pH, DO and SRP values were lower in the last year (Table 1).

On the other hand, the SWQI varied between 17.9 (poor water quality) and 44.0 (regular water quality) with an average of 27.6 (poor water quality) (Table 2). Fifty percent of the frequency SWQI data was 26.7 (poor water quality), and no significant differences ( $p > 0.05$ ) were found between sampling stations and the annual period of sampling.

Micro-phytoplankton richness value was 48, and it was distributed into Bacillariophyceae (19), Chlorophyceae (12), Cyanophyceae (7), Euglenophyceae (5), Conjugatophyceae (Zygnematophyceae) (3) and Dinophyceae (1) (Table 3). Fifty percent of the reported genera was found in the first year, reaching 90% in the second year. Bacillariophyceae was very frequent in the second year with

the presence of genera such as *Nitzschia*, *Sellaphora*, *Cymbella*, *Hantzschia*, *Geissleria*, *Diatoma*, *Cyclotella*, *Caloneis* and *Diploneis* which were not present the following year. Euglenophyceae, Cyanophyceae and Conjugatophyceae were present in all sampling stations and all the study period and Dinophyceae was only present in station 1 during the first year. Regarding Chlorophyceae, it was observed that *Chlorella* was present during the first year, decreasing its frequency in the second year until it was not present in the third year. This genus was correlated positively with DO, richness, chl-a and pH, and negatively with COD (data not shown). It was similar to the genera *Scenedesmus*, *Staurastrum* and *Eudorina*, although these last genera had low frequency. Although some genera present during the first year were not present in the third year, genera such as *Tetrastrum*, *Tetraedron*, *Ankyra* and *Crucigenia*, appeared to be replaced in the same FGs. In the first year of the study, the micro-phytoplankton richness varied between 6 genera (28/11/2015) and 19 genera (30/05/2015) and in the second year, an increase in the richness could be observed varying from 14 to 25 genera in the samplings of 14/05/2016 and 6/4/2017, respectively. In the third year of the study, a decrease in richness was found varying between 2 genera (19/05/2018) and 11 genera (23/12/2017). The richness values were 42, 40 and 33 in stations 1, 2 and 3, respectively, and the richness values were similar in sampling stations throughout the years. The richness ranged between 21 and 23 in the first year, 29 and 34 in the second year and 10 and 16 in the third year. In Fig. 3, a cluster analysis between the sampling stations using phytoplankton richness and the stations similarity can be observed. The distance between sampling station 1 and 2 was 0.965 and 0.960 between these two and sampling station 3. Nineteen FGs were identified, and the majority of these were characteristic of shallow, turbid, eutrophic to hypereutrophic and nutrient-rich water courses. The dominant FGs were J and W1, as they were found in all the samplings and followed by the MP and W2 groups which were found in 16 and 13 samplings, respectively. Twelve genera observed in the lagoon located in Parque Unzué did not classify as any type of FG. Despite the variation in the genera number between the three sampling stations, the majority had its equivalent FG. *Mougeotia* (T), *Staurodesmus* (N), *Ceratium* (LM), *Microcystis* (M) and *Dolichospermum* (H1) were present without an equivalent FG. However, these genera had low frequent appearing in 1 or 2 samples (Table 3). Figure 2a shows a PCA, and Fig. 2b shows the multiple correlations on analyzed parameters. The PCA allowed us to explain 95% of the sampling in the study area. The first year was correlated positively with cumulative rains, pH and DO, and it was characterized by high richness of micro-phytoplankton and by the presence of the following FGs: P,



**Fig. 2** a PCA between FGs and water parameters in the study area. b Correlation values of the parameters and FGs

D, MP, LM, S2, T, J and MP. The spring correlated with EC and SD with low richness of micro-phytoplankton and the presence to X1. At the end of this period, it was correlated positively with TP, SRP, hydrometric level, COD and TC. The second-year continued with the same correlations and then the autumn-2016 and autumn-2017 periods were correlated positively with temperature, TMAB and chl-a and were characterized by high richness of micro-phytoplankton with the following FGs: K, Lo, F, A, S1, X2, W1,

G, M and N. Subsequently, the samples were correlated with cumulative rain, pH and DO. Finally, the third year was positively correlated with TP, SRP, hydrometric level, COD and TC and negatively with pH, DO and cumulative rain with the presence of H1. Then, the end of the period correlated positively with EC and SD with the presence of X1 and negatively correlated with the temperature, chl-a and TMAB with low richness of micro-phytoplankton and the presence of X1. These FGs were characteristic of

**Table 2** Values of simplified water quality index (SWQI) applied to data of the lagoon of the Parque Unzué in each date of sampling

Date (mm/dd/yyyy)	<i>t</i>	COD	SD	DO	EC	ISQA
05/30/15	1.0	0	0	11.8	14.0	25.8
07/04/15	1.0	0	0	23.2	13.9	37.1
09/05/15	1.0	0	0	25.0	13.5	38.3
09/26/15	1.0	0	0	12.5	13.4	25.9
10/17/15	1.0	0	0	14.0	14.6	28.6
11/28/15	1.0	0	0	16.8	11.9	27.4
12/19/15	0.9	0	0	9.0	12.7	20.2
01/25/16	0.9	0	3	6.1	15.3	21.7
03/05/16	0.9	0	0	9.9	21.6	29.4
05/14/16	1.0	0	0	5.5	21.2	26.7
07/09/16	1.0	0	0	12.7	16.1	28.8
09/10/16	1.0	0	0	25.0	19.0	44.0
01/20/17	0.9	0	0	20.9	21.6	37.6
03/16/17	1.0	0	0	3.6	22.2	25.3
04/06/17	1.0	0	0	9.4	19.7	29.0
06/29/17	1.0	0	0	5.3	17.8	23.1
09/08/17	1.0	0	3	14.3	14.0	31.3
11/15/17	0.9	0	0	6.6	13.3	17.9
12/23/17	1.0	0	0	8.4	13.4	21.0
02/23/18	1.0	0	0	7.5	12.7	19.4
05/19/18	1.0	0	0	6.0	15.3	21.2

Very poor (SWQI=0–10), poor (SWQI=11–30), regular (SWQI=31–70), good (SWQI=71–94) and very good (SWQI=95–100). *t* temperature, *EC* electric conductivity, *DO* dissolved oxygen, *COD* chemical oxygen demand, *SD* Secchi disk

hypereutrophic (X1) and stratified environment and low nitrogen concentration (H1).

## 4 Discussion

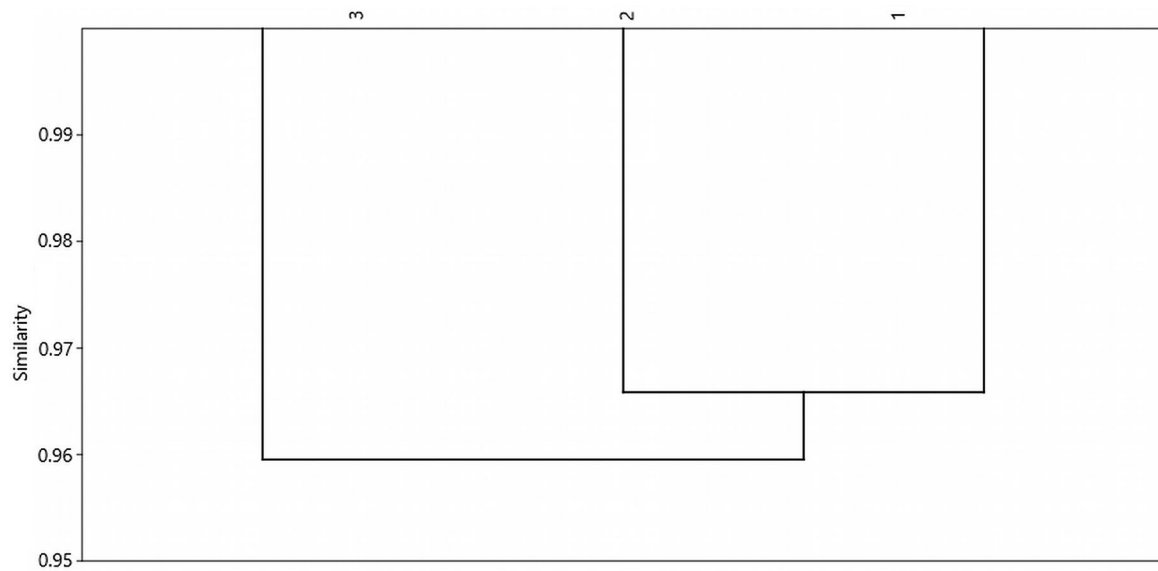
Water quality of the lagoon in Parque Unzué was poor-regular throughout the study period, indicating permanent organic pollution characterized by high organic matter, phosphorus compound and low DO concentration. This fact was also reflected on micro-phytoplankton assemblages, in particular in the richness of micro-phytoplankton and the functional groups that was characteristic of shallow environments, rich in nutrients and organic matter [71]. Organic pollution tends to influence phytoplankton more than other factors in the aquatic environment [66] and the organic matter favors to phytoplankton mixotrophic, increasing the development of the Euglenophyceae group [14, 21, 30, 91]. Although the temperature is the main regulatory factor in temperate systems [15, 56, 60], no seasonality in the variation of the physico-chemical parameters was observed in the study area. On the other hand, no cyclic annual variability in the lagoon was observed, but an increase in system deterioration over time, specifically reflected

in the micro-phytoplankton assemblages, was noticed. Regarding this, Chlorophyceae was the most sensitive group and specifically, the variation in the presence of *Chlorella* can be interpreted as an early warning indicator of the system. This genus is commonly found in the natural environment and also used as a water quality bioindicator [19]. Although it has tolerance to organic contamination [66], it is susceptible to relatively low pHs [68] as recorded during the third year of study. Moreover, in the same year, it was observed that chl-a and DO concentration also decreased. Chl-a is an important pigment necessary for photosynthesis, since it allows converting light energy to chemical energy and is also an indicator of primary production [3, 40]. During the photosynthesis, the inorganic carbon decreases, increasing the pH and DO values in the water [20]. In such situation, a decreasing richness of micro-phytoplankton and micro-phytoplankton frequency was observed in the last year of this study. In addition, the DO decreased even though the content of organic matter and bacteria (TMAB and CT) did not vary between the sampling periods. This could imply that the decrease in DO concentration (as a net balance) occurred due to the low production of oxygen by the primary producers. It is possible that this situation toward which the system advanced, particularly during



**Table 3** List of micro-phytoplankton richness and FGs classification

FGs	Genera	n Sampling	General characteristic of FGs
J	<i>Pediastrum</i>	18	Shallow, mixed and highly enriched systems
	<i>Scenedesmus</i>	19	
	<i>Coelastrum</i>	4	
	<i>Tetrastrum</i>	7	
	<i>Crucigenia</i>	4	
X1	<i>Chlorella</i>	9	Surface environments, eutrophic to hypertrophic
	<i>Schroederia</i>	2	
	<i>Ankyra</i>	2	
P	<i>Staurastrum</i>	5	Characteristics of eutrophic waters
	<i>Fragilaria</i>	12	
	<i>Aulacoseira</i>	8	
T	<i>Mougeotia</i>	1	Persistently mixed layers, where light is limiting
F	<i>Dictyosphaerium</i>	2	Clear, deeply mixed meso-eutrophic, lakes
	<i>Sphaerocystis</i>	1	
G	<i>Eudorina</i>	5	Nutrient-rich conditions in stagnating water columns; small eutrophic lakes and very stable phases in larger river-fed basins and storage reservoirs
	<i>Tetraedron</i>	4	
W1	<i>Phacus</i>	18	Ponds, even temporary, rich in organic matter from livestock or wastewater
	<i>Euglena</i>	21	
	<i>Lepocinclis</i>	1	
N	<i>Staurodesmus</i>	1	Can be represented in shallow lakes
W2	<i>Trachelomonas</i>	14	Meso-eutrophic ponds, even temporary, shallow lakes
	<i>Strombomonas</i>	5	
MP	<i>Navicula</i>	16	Frequently stirred up, inorganically turbid shallow lakes
	<i>Gomphonema</i>	8	
	<i>Cymbella</i>	3	
	<i>Surirella</i>	4	
D	<i>Nitzschia</i>	3	Shallow turbid waters including rivers
	<i>Diatoma</i>	1	
A	<i>Cyclotella</i>	5	Clear, deep, base-poor lakes, with species sensitive to pH rise
LM	<i>Ceratium</i>	2	Eutrophic to hypertrophic, small- to medium-sized lakes
S2	<i>Spirulina</i>	6	Warm, shallow and often highly alkaline waters
Lo	<i>Merismopedia</i>	9	Deep and shallow, oligo- to eutrophic, medium to large lakes
K	<i>Aphanocapsa</i>	11	Shallow, nutrient-rich water columns
H1	<i>Dolichospermum</i>	1	Eutrophic, both stratified and shallow lakes with low nitrogen content
S1	<i>Pseudanabaena</i>	2	Turbid mixed environments
M	<i>Microcystis</i>	2	Water bodies eutrophic to hypertrophic, small to medium
Without classification	<i>Amphipleura</i>	3	
	<i>Sellaphora</i>	4	
	<i>Pinnularia</i>	13	
	<i>Reimeria</i>	1	
	<i>Gomphoneis</i>	1	
	<i>Hantzschia</i>	2	
	<i>Geissleria</i>	2	
	<i>Caloneis</i>	1	
	<i>Gyrosigma</i>	1	
	<i>Diploneis</i>	1	
<i>Chroococcus</i>	3		



**Fig. 3** Cluster analysis between sampling stations according to richness values of each sampling date

the third year, took place due to the important bird load that the lagoon presented. The bird guano showed slightly acidic pH [79] and important concentrations of ions (electrical conductivity, [11]). On the other hand, it can be observed that the TP did not vary between the study period, but SRP decreased in the last period. This indicates minor mineralization of the phosphorus that may have influenced primary productivity or an input change of the phosphorus nutrients. However, SRP always was  $> 100 \mu\text{g L}^{-1}$ ; therefore, it would not limit the growth of phytoplankton [90].

Our results coincided with similar works in the Pampas region influenced by urbanization [65] and the lagoon in Parque Unzué's FGs were similar to those found in Pampean streams associating the FGs P and W1 with moderate COD values and turbidity and W2 with high values of these variables [5]. Moreover and similar to this work, another study associated the phytoflagellates (mixotrophic) with high concentrations of organic matter and lixiviate pollutants [81]. Investigations have reported bird effects in water quality [89, 92], although they did not observe a correlation between the abundance of birds and the parameters of water quality. They suggest that the effect can be observed in the long term if waterfowl populations gradually increase [89, 92]. Several investigations have associated the nutrients, organic matter and coliforms inputs by bird guano in lagoons [8, 9, 12, 36, 74, 76]. In addition, the elimination of bottom fauna by guanotrophy (ammonia-poisoning) [10, 69] might occur. In this study, we associated a bird effect with the decrease in the pH values, which can affect micro-phytoplankton richness and chl-a production.

However, this is an aspect that we must deepen and is therefore one of the objectives of the next research.

Our hypothesis was contrasted, and in this study, we could check that the lagoon in Parque Unzué presented permanent organic pollution and this was reflected in micro-phytoplankton assemblages. Moreover, we established that *Chlorella* presence can be an early warning indicator of the system.

## 5 Conclusion

We conclude that the lagoon in Parque Unzué presented permanent organic pollution which increased over the study period. It is possible that the system is moving toward collapse if the current contamination levels continue and that the system is at the limit of its capacity to absorb pollution. Given that there are no previous studies in the study area, it is uncertain at what point in the evolution of the system the lagoon is and if it is possible to reverse the current level of organic contamination that is compromising even the survival of species that are tolerant. We found that *Chlorella* was a bioindicator of change in the system, although it is necessary to continue monitoring the study area systematically in order to know if it is possible to use this type of micro-phytoplankton as an early warning indicator in highly contaminated systems and to study the bird effects in the lagoon located in Parque Unzué.

**Acknowledgements** The authors want to thank to the Universidad Autónoma de Entre Ríos for financing through PIDIN-UADER

“Diagnóstico ambiental y propuesta de gestión para la Laguna del Parque Unzué (Gualeguaychú, Entre Ríos)” Res. C.S. 404/15 and PIDIN-UADER “Contribución al conocimiento de la ecología de dos lagunas urbanas pampeanas: laguna del parque Unzué (Gualeguaychú, Entre Ríos) y laguna Los Patos (Ensenada, Buenos Aires)” Res. 199/18 for the execution of this study and for the UADER research fellowships (Res. 105/16). Moreover, we would like to thank the students and professors of the IBGA Laboratory for their collaboration in the sampling carried out in the lagoon in Parque Unzué. We are grateful to Magdalena Chiaravalli for her English revision. In addition, we want to thank the three anonymous reviewers and to the subject editor for their contributions to improve this work.

**Authors' contributions** DG carried out sampling, analysis of water samples and writing this manuscript, EAH carried out sampling and analysis of water samples, IA participated of sampling and managed the financing of the project and MCM carried out sampling, analysis of water samples, writing this manuscript and managed the financing of the project. The authors contributed to critically to the drafts and gave final approval for publication.

## Compliance with ethical standards

**Conflict of interest** The authors declare that they have no conflict of interest.

## References

1. Abonyi A, Ács É, Hidas A, Grigorszky I, Várbíró G, Borics G, Kiss KT (2018) Functional diversity of phytoplankton highlights long-term gradual regime shift in the middle section of the Danube River due to global warming, human impacts and oligotrophication. *Freshw Biol* 63(5):456–472. <https://doi.org/10.1111/fwb.13084>
2. Abonyi A, Leitao M, Lançon AM, Padišák J (2012) Phytoplankton functional groups as indicators of human impacts along the River Loire (France). *Phytoplankton responses to human impacts at different scales*, vol 221. Springer, Dordrecht, pp 233–249. [https://doi.org/10.1007/978-94-007-5790-5\\_18](https://doi.org/10.1007/978-94-007-5790-5_18)
3. Aminot A, Rey F (2000) Standard procedure for the determination of chlorophyll *a* by spectroscopic methods. International Council for the Exploration of the Sea, p 112
4. APHA-AWWA-WFF (2002) Standard method for the examination of water and wastewater. 17°. Díaz de Santos S.A., Madrid, España
5. Bauer DE (2009) Ecología del fitoplancton de arroyos pampeanos y su valor como indicador de la calidad del agua. *Disertación*, Facultad de Ciencias Naturales y Museo
6. Beamud G, León JG, Kruk C, Pedrozo FL, Díaz MM (2015) Using trait-based approaches to study phytoplankton seasonal succession in a subtropical reservoir in arid central western Argentina. *Environ Monit Assess* 187(5):271. <https://doi.org/10.1007/s10661-015-4519-1>
7. Bergkemper V, Weisse T (2018) Do current European lake monitoring programmes reliably estimate phytoplankton community changes? *Hydrobiologia* 824(1):143–162
8. Bojakowska I (2016) Phosphorus in lake sediments of Poland—results of monitoring research. *Limnol Rev* 16(1):15–26. <https://doi.org/10.2478/limre-2016-0002>
9. Brandvold DK, Popp CJ, Brierley JA (1976) Waterfowl refuge effect on water quality: II. Chemical and physical parameters. *J Water Pollut Control Fed* 48(4):680–687
10. Brinkhurst RO, Walsh B (1967) Rostherne Mere, England, a further instance of guano trophy. *J Fish Board Cana* 24(6):1299–1313
11. Burés S (1997) *Substrates*. Agrotecnias, Madrid
12. Calizza E, Costantini ML, Rossi D, Pasquali V, Careddu G, Rossi L (2016) Stable isotopes and digital elevation models to study nutrient inputs in high-Arctic lakes. *Rendiconti Lincei* 27(1):191–199. <https://doi.org/10.1007/s12210-016-0515-9>
13. Chellappa NT, Câmara FRA, Rocha O (2009) Phytoplankton community: indicator of water quality in the Armando Ribeiro Gonçalves Reservoir and Pataxá<sup>3</sup> Channel, Rio Grande do Norte, Brazil. *Braz J Biol* 69(2):241–251
14. Conforti V (1998) Morphological changes of Euglenophyta in response to organic enrichment. *Phytoplankton and trophic gradients*, vol 129. Springer, Dordrecht, pp 277–285. [https://doi.org/10.1007/978-94-017-2668-9\\_24](https://doi.org/10.1007/978-94-017-2668-9_24)
15. Cony NL, Ferrer NC, Martínez A, Cáceres EJ (2016) Productividad, estado trófico y dinámica fitoplanctónica en la laguna Sauce Grande y su afluente homónimo (pcia. de Buenos Aires, Argentina). *Biología Acuática* 31:50–62
16. Crettaz-Minaglia MC, Aguer I, Juárez R (2015) Adaptación de un índice de calidad de agua y comparación con el índice biótico Biological Monitoring Working Party (BMWP) en el arroyo Santa Bárbara (Gualeguaychú, Entre Ríos). *Jornada; XII Jornadas de Ciencias Naturales del Litoral, Paraná*
17. Crettaz-Minaglia MC, Gianello D, Roldán C, Chaves E, Aguer I, Juárez RA (2018) Estructura del ensamblaje de macroinvertebrados bentónicos de una laguna urbana de la Pampa Mesopotámica. *Intropica*. <https://doi.org/10.21676/23897864.2557>
18. Crettaz-Minaglia MC, Lorena R, Oswaldo AJ, Sandro G, Daniela S, Dario A, Leda G (2017) Mathematical modeling of *Microcystis aeruginosa* growth and [D-Leu1] microcystin-LR production in culture media at different temperatures. *Harmful Algae* 67:13–25. <https://doi.org/10.1016/j.hal.2017.05.006>
19. Czaplicka-Kotas A, Lodowska J (2014) Biomonitoring of surface water by synchronous culture of *Chlorella vulgaris* algae. *Environ Prot Eng* 40(4):29–40. <https://doi.org/10.5277/epe140403>
20. De León L (2002) In: Domínguez A, Prieto RG (eds) *Floraciones de cianobacterias en aguas continentales del Uruguay: causas y consecuencias*. Perfil Ambiental del Uruguay 2002. Nordan-Comunidad, Montevideo, pp 28–37
21. De León L, Bonilla S, Aubriot L (1999) Capítulo 13. Fitoplancton. In: Conde D, Arocena R (eds) *Métodos en ecología de aguas continentales*. Con ejemplos de limnología en Uruguay. Instituto de Biología. Sección Limnología, Uruguay
22. Derlet RW, Ger KA, Richards JR, Carlson JR (2008) Risk factors for coliform bacteria in backcountry lakes and streams in the Sierra Nevada mountains: a 5-year study. *Wilderness Environ Med* 19(2):82–90. <https://doi.org/10.1580/07-WEME-OR-1511.1>
23. Diehl S, Berger S, Ptacnik R, Wild A (2002) Phytoplankton, light, and nutrients in a gradient of mixing depths: field experiments. *Ecology* 83(2):399–411
24. Echenique R, Rodríguez J, Caneo M, Gianuzzi L, Barco M, Rivera J, Caixach J, Andrinolo D (2006) Microcystins in the Drinking Water Supply in the Cities of Ensenada and La Plata (Argentina). In: *Congreso Brasileiro de Ficología & Simposio Latino-Americano de Algas Nocivas*, Itajaí, Brasil
25. Elosegui A, Sabater S (2009) *Conceptos y técnicas en ecología fluvial*. Fundación BBVA. Bilbao, España. 444
26. Escobedo-Urías DC (2010) *Diagnóstico y descripción del proceso de eutrofización en lagunas costeras del norte de Sinaloa*. Maestría en Manejo de Recursos Marinos. Tesis doctoral. Instituto Politécnico Nacional, Centro Interdisciplinario de Ciencias Marinas, La Paz, B.C.S, México
27. Faggi A, Martínez-Carretero E (2013) Argentina. In: *Mcgregor-Fors I, Ortega-Álvarez R (eds) Ecología urbana: experiencias*

- en América Latina, pp 978–607. [http://www1.inecol.edu.mx/libro\\_ecologia\\_urbana](http://www1.inecol.edu.mx/libro_ecologia_urbana). Accessed 28 June 2016
28. Ferreira-Rezende C (2007) Estructura da comunidade de macroinvertebrados associados ao folhíço submerso de remanso e correnteza em igarapés da Amazônia Central. *Biota Neotrop* 7(2):301–305
  29. Frau D-G (2015) Riqueza y abundancia específica de fitoplancton de la laguna “El Mirador” (Santa Fe, Argentina) durante la estación de verano. *Nat Neotrop* 1(43):47–58. <https://doi.org/10.14409/natura.v1i43.4282>
  30. Frau D G (2016) Importancia de las fuerzas de bottom-up y top-down como estructuradores del fitoplancton en lagunas aluviales con diferentes tipos de conexión al río Paraná Medio. Tesis doctoral, Facultad de Bioquímica y Ciencias Biológicas, Universidad Nacional del Litoral
  31. Friedrich G, Pohlmann M (2009) Long-term plankton studies at the lower Rhine/Germany. *Limnol Ecol Manag Inland Waters* 39(1):14–39. <https://doi.org/10.1016/j.limno.2008.03.006>
  32. Frisch D, Cottenie K, Badosa A, Green AJ (2012) Strong spatial influence on colonization rates in a pioneer zooplankton metacommunity. *PLoS one* 7(7):e40205
  33. Gao Y, Deng Z, Morrison AM (2017) Can urban lake recreational pressure be measured? The impacts of urbanization on Wuhan’s lakes. *Appl Spat Anal Policy*. <https://doi.org/10.1007/s12061-017-9241-7>
  34. Gianello D (2016) Diagnóstico y gestión ambiental en la Laguna del Parque Unzué (Guaaleguaychú, Entre Ríos) con énfasis en el estudio de la diversidad de fitoplancton. Tesina de licenciatura, Facultad de Ciencia y Tecnología, Universidad Autónoma de Entre Ríos, Argentina
  35. Gianello D, Aguer I, Crettaz–Minaglia M (2017) Aportes al conocimiento del fitoplancton de la laguna del Parque Unzué Guaaleguaychú Argentina. *Nat Neotrop* 2(48):37–43. <https://doi.org/10.14409/natura.v2i48.7609>
  36. Gwiazda R, Woźnica A, Łozowski B, Kostecki M, Flis A (2014) Impact of waterbirds on chemical and biological features of water and sediments of a large, shallow dam reservoir. *Oceanol Hydrobiol Stud* 43(4):418–426. <https://doi.org/10.2478/s13545-014-0160-9>
  37. Hammer Ø, Harper DAT, Ryan PD (2001) PAST: paleontological statistics software package for education and data analysis. *Palaeontol Electron* 4(1):9
  38. Hough JL (1998) Financing marine protected areas: the role of the GEF. *Parks* 8(2):55–59
  39. INTA (2005) Carta de suelos de la República Argentina, departamento Guaaleguaychú, Entre Ríos
  40. Jeffrey SE, Mantoura R (1997) Development of pigment method for oceanography: SCOR-Supported Working Groups and objectives. *Phytoplankton pigments in oceanography: guidelines to modern methods*, vol 10. Monographs on oceanographic methodology. UNESCO Publishing, Paris, pp 19–36
  41. Johnstone C, Day JG, Staines H, Benson EE (2006) The development of a 2,2'-azinobis-(3-ethyl-benzothiazoline-6-sulfonic acid) radical cation decolourisation assay for evaluating total antioxidant status in an alga used to monitor environmental impacts in urban aquatic habitats. *Ecol Ind* 6(2):280–289. <https://doi.org/10.1016/j.ecolind.2005.03.003>
  42. Juárez I, Crettaz–Minaglia MC, Gianello D, Rodríguez MS, San Millán F, Chaves E, Juárez RA (2018) Diagnóstico ambiental de la Cuenca media-baja del arroyo Santa Bárbara (Guaaleguaychú, Entre Ríos). *Sci Interfluvius* 9(1):46–70
  43. Komárek J, Anagnostidis M (1999) Cyanoprokaryota 1. Teil. Chroococcales. In: Ettl H, Gärtner G, Heynig H, Mollenhauer D (eds) *Süßwasserflora von Mitteleuropa*. Bd. 19/1. Gustav Fischer Verlag, Jena, p 548
  44. Komárek J, Anagnostidis M (2005) Cyanoprokaryota. Teil/2nd. Part: oscillatoriales. In: Büdel B, Krienitz L, Gärtner G, Scnagerl M (eds) *Süßwasserflora von Mitteleuropa*. Bd. 19/2. Elsevier/Spektrum, Heidelberg, p 759
  45. Komárek J, Fott B, Huber-Pestalozzi G (1983) *Das Phytoplankton des Süßwassers*. Systematik und Biologie-Teil 7, 1. Hälfte. Schweizerbart Science Publishers, Stuttgart
  46. Krammer K, Lange–Bertalot H (1991) Bacillariophyceae. Teil 3: Centrales, Fragilariaceae, Eunotiaceae. In: Ettl H, Gerloff J, Heynig H, Mollenhauer D (eds) *Süßwasserflora von Mitteleuropa*. Gustav Fischer Verlag, Stuttgart
  47. Kruk C, Huszar VL, Peeters ET, Bonilla S, Costa L, Lürling M, Scheffer M (2010) A morphological classification capturing functional variation in phytoplankton. *Freshw Biol* 55(3):614–627. <https://doi.org/10.1111/j.1365-2427.2009.02298.x>
  48. Kruk C, Segura AM (2012) The habitat template of phytoplankton morphology-based functional groups. *Phytoplankton responses to human impacts at different scales*, vol 698. Springer, Dordrecht, pp 191–202. [https://doi.org/10.1007/978-94-007-5790-5\\_15](https://doi.org/10.1007/978-94-007-5790-5_15)
  49. Liu Y, Brown SD (2013) Comparison of five iterative imputation methods for multivariate classification. *Chemom Intell Lab Syst* 120:106–115. <https://doi.org/10.1016/j.chemolab.2012.11.010>
  50. Mancini M, Crichigno S, Ortiz M, Haro JG (2012) Lagos urbanos: importancia, dinamismo y multiplicidad de usos. El caso del lago Villa Dálcar (Córdoba, Argentina). *Biol Acuát* 27:175–189
  51. Marker AFH, Crowther CA, Gunn RJM (1980) Methanol and acetone as solvents for estimating chlorophyll a and phaeopigments by spectrophotometry. *Arch Hydrobiol Beih Ergebnisse der Limnologie* 14:52–69
  52. Maznah WW, Makhrough A (2015) Water quality of tropical reservoir based on spatio-temporal variation in phytoplankton composition and physico-chemical analysis. *Int J Environ Sci Technol* 12(7):2221–2232. <https://doi.org/10.1007/s13762-014-0610-3>
  53. Mischke U, Venohr M, Behrendt H (2011) Using phytoplankton to assess the trophic status of German rivers. *Int Rev Hydrobiol* 96(5):578–598. <https://doi.org/10.1002/iroh.201111304>
  54. Molisani MM, de Sousa Barroso H, Becker H, Moreira MOP, Hijo CAG, do Monte TM, Vasconcellos GH (2010) Trophic state, phytoplankton assemblages and limnological diagnosis of the Castanhão Reservoir, CE, Brazil. *Acta Limnol Bras* 22(1):1–12
  55. Morello J, Matteucci SD, Rodríguez AF, Silva ME (2012) *Ecorregiones y complejos Ecosistémicos de Argentina*. Orientación Gráfica Editora, Buenos Aires
  56. Nannavecchia P (2016) Contaminación antrópica de los cuerpos de agua. Estudio de su efecto sobre organismos del fitoplancton a escala ecológica y de bioensayos de laboratorio. Doctoral dissertation, Tesis Doctoral, Facultad de Ciencias Exactas y Naturales, Universidad de Buenos Aires, Argentina
  57. Narodowski P, Cirio G, Jaimarena R (2018) Proyectos arquitectónicos y riesgo de inundaciones: debilidad de los actores, la normativa y las herramientas técnicas para enfrentar la especulación inmobiliaria. El caso Amarras de Pueblo General Belgrano y la resistencia en Guaaleguaychú, Entre Ríos (Argentina). *Cuadernos de Geografía: Revista Colombiana de Geografía* 26(2):263–286. <https://doi.org/10.15446/rcdg.v27n2.66278>
  58. Naselli-Flores L (2008) Urban lakes: ecosystems at risk, worthy of the best care. In: *Proceedings of Taal 2007: The 12th World Lake Conference*, pp 1333–1337
  59. Norris B, Laws E (2017) Nutrients and phytoplankton in a shallow, hypereutrophic urban lake: prospects for restoration. *Water* 9(6):431. <https://doi.org/10.3390/w9060431>
  60. Novoa M, Luque ME, Lombardo D, Martínez de Fabricious AL (2006) Estudio ficológico de lagos urbanos artificiales del sur de la provincial de Córdoba. *Phycological study of artificial urban reservoirs of the South of the province of Córdoba*. *Boletín de*

- la Sociedad Argentina Botánica 41(3–4):203–231. <https://doi.org/10.25260/EA.17.27.3.0.579>
61. Novoa M, Martínez de Fabricius AL, Luque ME, Lombardo DM (2011) Distribución temporal del fitoplancton en un lago urbano del centro de Argentina (Río Cuarto, Córdoba). *Biológicas Revista de la DES Ciencias Biológico Agropecuarias* 13(2):1–14
  62. O'Farrell I, Vinocur A, de Tezanos Pinto P (2015) Long-term study of bloom-forming cyanobacteria in a highly fluctuating vegetated floodplain lake: a morpho-functional approach. *Hydrobiologia* 752(1):91–102. <https://doi.org/10.1007/s10750-014-1962-x>
  63. Olding DD, Hellebust JA, Douglas MSV (2000) Phytoplankton community composition in relation to water quality and water-body morphometry in urban lakes, reservoirs, and ponds. *Can J Fish Aquat Sci* 57(10):2163–2174. <https://doi.org/10.1139/f00-176>
  64. Padisák J, Crossetti LO, Naselli-Flores L (2009) Use and misuse in the application of the phytoplankton functional classification: a critical review with updates. *Hydrobiologia* 621(1):1–19. <https://doi.org/10.1007/s10750-008-9645-0>
  65. Padulles ML, Conforti VTD, Nannavecchia PS, O'Farrell I (2017) Impacto de la contaminación orgánica sobre el fitoplancton de un arroyo de la llanura pampeana. *Ecol Austral* 27(3):437–448. <https://doi.org/10.25260/EA.17.27.3.0.579>
  66. Palmer CM (1969) A composite rating of algae tolerating organic pollution 2. *J Phycol* 5(1):78–82. <https://doi.org/10.1111/j.1529-8817.1969.tb02581.x>
  67. Quiros R (2007) Manejo y recuperación de lagos urbanos. Facultad de Agronomía. Universidad de Buenos Aires
  68. Ramos R, Pizarro R (2018) Crecimiento y capacidad de biorremediación de *Chlorella vulgaris* (Trebouxiophyceae, Chlorophyta) cultivada en aguas residuales generadas en el cultivo del pez dorado *Seriola lalandi* (Perciformes: Carangidae). *Revista de Biología Marina y Oceanografía* 53(1):75–86. <https://doi.org/10.4067/S0718-19572018000100075>
  69. Reynolds CS (1978) Notes on the phytoplankton periodicity of Rostherne Mere, Cheshire, 1967–1977. *Brit Phycol J* 13(4):329–335. <https://doi.org/10.1080/00071617800650391>
  70. Reynolds CS (1998) What factors influence the species composition of phytoplankton in lakes of different trophic status? *Hydrobiologia* 369:11–26. <https://doi.org/10.1023/A:1017062213207>
  71. Reynolds CS, Huszar V, Kruk C, Naselli-Flores L, Melo S (2002) Towards a functional classification of the freshwater phytoplankton. *J Plankton Res* 24(5):417–428. <https://doi.org/10.1093/plankt/24.5.417>
  72. Rodríguez MS, Crettaz-Minaglia MC, Gianello D, Piaggio M (2019) Microbiological water quality of a temperate third order stream. Article submitted for publication
  73. Rousseaux CS, Gregg WW (2014) Interannual variation in phytoplankton primary production at a global scale. *Remote Sens* 6(1):1–19. <https://doi.org/10.3390/rs6010001>
  74. Roy US, Goswami AR, Aich A, Mukhopadhyay SK (2011) Changes in densities of waterbird species in Santragachi Lake, India: potential effects on limnochemical variables. *Zool Stud* 50(1):76–84
  75. Sahoo PK, Guimarães JTF, Souza-Filho PWM, Bozelli RL, De Araujo LR, Menezes RdS, Lopes PM, Silva MSd, Rodrigues TM, Costa Mfd, Dall'Agnol R (2017) Limnological characteristics and planktonic diversity of five tropical upland lakes from Brazilian Amazon. *Ann Limnol Int J Lim* 53:467–483. <https://doi.org/10.1051/limn/2017026>
  76. Sahoo PK, Guimaraes JTF, Souza-Filho PWM, Da Silva MS, Silva-Júnior RO, Pessim G, De Moraes BC, Pessoa PFP, Rodrigues TM, Da Costa MF, Dall'agnol R (2016) Influence of seasonal variation on the hydro-biogeochemical characteristics of two upland lakes in the Southeastern Amazon, Brazil. *An Acad Bras Ciênc* 88(4):2211–2227. <https://doi.org/10.1590/0001-3765201620160354>
  77. Salmaso N, Naselli-Flores L, Padisak J (2015) Functional classifications and their application in phytoplankton ecology. *Freshw Biol* 60(4):603–619. <https://doi.org/10.1111/fwb.12520>
  78. Salmaso N, Padisák J (2007) Morpho-functional groups and phytoplankton development in two deep lakes (Lake Garda, Italy and Lake Stechlin, Germany). *Hydrobiologia* 578(1):97–112. <https://doi.org/10.1007/s10750-006-0437-0>
  79. Sanchez-Garcia J (2016) Caracterización química del guano de aves marinas de la Isla San Jerónimo, Baja California, México y su viabilidad como fertilizante agrícola. Master thesis, Centro de Investigación Científica y de Educación Superior de Ensenada, Baja California, México
  80. Santana LM, Ferragut C (2016) Structural changes of the phytoplankton and epiphyton in an urban hypereutrophic reservoir. *Acta Limnol Bras* 28:29. <https://doi.org/10.1590/s2179-975x5716>
  81. Sardi-Saavedra A, Madera-Parra C, Peña-Salamanca EJ, Cerón VA, Mosquera J (2018) Phytoplankton functional groups in a high-rate algal pond used for the bioremediation of landfill leachate. *Acta Biol Colomb* 23(3):295–303. <https://doi.org/10.15446/abc.v23n3.69537>
  82. Schwoerbel J (1975) Métodos de Hidrobiología: biología del agua dulce. Blume, Madrid, p 262
  83. Sierra-Vásquez MA (2012) Ciudad y fauna urbana: un estudio de caso orientado al reconocimiento de la relación hombre, fauna y hábitat urbano en Medellín. Tesis Doctoral, Universidad Nacional de Colombia, Sede Medellín, Colombia
  84. Silva IG, Moura AN, Dantas EW (2013) Phytoplankton community of Reis lake in the Brazilian Amazon. *Anais da Academia Brasileira de Ciências* 85(2):649–663
  85. Sorensen M, Barzetti V, Keipi K, Williams J (1998) Manejo de las áreas verdes urbanas. Inter-American Development Bank
  86. Taborda V, Gianello D, Aguer I, Crettaz-Minaglia M (2017) Importancia de la conservación de las lagunas urbanas pampeanas. Congreso Internacional Aguas, Ambiente y Energía, Mendoza, Argentina. Acta de congreso, pp 346–350
  87. Tas S, Yilmaz IN, Okus E (2009) Phytoplankton as an indicator of improving water quality in the Golden Horn Estuary. *Estuaries Coasts* 32(6):1205
  88. Tell G, Conforti V (1986) Euglenophyta pigmentadas de Argentina. *Bibl Phycol* 75:1–301
  89. Tobiessen P, Wheat E (2000) Long and short term effects of waterfowl on Collins Lake, an urban lake in upstate New York. *Lake Reserv Manag* 16(4):340–344. <https://doi.org/10.1080/07438140009354241>
  90. Unrein F (2001) Efecto de los nutrientes y el pH sobre el crecimiento y la estructura del fitoplancton en ambientes de la llanura aluvial del Paraná Inferior. Dissertation, Facultad de Ciencias Exactas y Naturales, Universidad de Buenos Aires
  91. Unrein F (2002) Changes in phytoplankton community along a transversal section of the Lower Paraná floodplain, Argentina. *Hydrobiologia* 468:123–134
  92. Wambach EJ, Mallin MA (2002) Effect of waterfowl and rainfall on nitrogen, phosphorus, and fecal coliform bacteria in Greenfield Lake. In: Mallin MA, Cahoon LB, Posey MH, Leonard LA, Parsons DC, Johnson VL, Wambach EJ, Alphin TD, Nelson KA, Merritt JF (eds) Environmental quality of Wilmington and New Hanover County Watersheds 2000–2001. CMS Report 02–01. Center for Marine Science, University of North Carolina, Wilmington
  93. Zalocar de Domitrovic Y, Maidana NI (1997) Taxonomic and ecological studies of the Parana River diatom flora (Argentina). In: Cramer J (ed) *Biblioteca Diatomológica*. J. Cramer, Berlin, Stuttgart, pp 1–122

**Publisher's Note** Springer Nature remains neutral with regard to jurisdictional claims in published maps and institutional affiliations.