

Involvement of c-Src Tyrosine Kinase in SHP-1 Phosphatase Activation by Ang II AT₂ Receptors in Rat Fetal Tissues

Sergio E. Alvarez,¹ Leonardo R. Seguin,¹ Rodrigo S. Villarreal,¹
Clara Nahmias,² and Gladys M. Ciuffo^{1*}

¹Facultad de Química, Instituto Multidisciplinario de Investigaciones Biológicas (IMIBIO-CONICET),
Bioquímica y Farmacia, Universidad Nacional de San Luis, Ejército de los Andes 950, 5700 San Luis, Argentina

²Department of Cell Biology, CNRS UMR8104, Inserm U567, Université Paris 5, Institut Cochin, F-75014 Paris,
France

ABSTRACT

Angiotensin II (Ang II) AT₂ receptors are abundantly expressed in rat fetal tissues where they probably contribute to development. In the present study we examine the effects of Ang II type 2 receptor stimulation on SHP-1 activation. Ang II (10⁻⁷ M) elicits a rapid and transient tyrosine phosphorylation of SHP-1, maximal at 1 min, in a dose-dependent form, blocked by the AT₂ antagonist, PD123319. SHP-1 phosphorylation is followed in time by tyrosine dephosphorylation of different proteins, suggesting a sequence of events. Ang II induces association of SHP-1 to AT₂ receptors as shown by co-immunoprecipitation, Western blot and binding assays. SHP-1 activity was determined in immunocomplexes obtained with either anti-AT₂ or anti-SHP-1 antibodies, after Ang II stimulation (1 min), in correlation with the maximal level of SHP-1 phosphorylation. Interestingly, following receptor stimulation (1 min) c-Src was associated to AT₂ or SHP-1 immunocomplexes. Preincubation with the c-Src inhibitor PP2 inhibited SHP-1 activation and c-Src association, thus confirming the participation of c-Src in this pathway. We demonstrated here for the first time the involvement of c-Src in SHP-1 activation via AT₂ receptors present in an ex vivo model expressing both receptor subtypes. In this model, AT₂ receptors are not constitutively associated to SHP-1 and SHP-1 is not constitutively activated. Thus, we clearly establish that SHP-1 activation, mediated by the AT₂ subtype, involves c-Src and precedes protein tyrosine dephosphorylation, in rat fetal membranes. *J. Cell. Biochem.* 9999: 1–9, 2008. © 2008 Wiley-Liss, Inc.

KEY WORDS: ANG II; AT₂ RECEPTORS; SHP-1 ACTIVATION; DEVELOPMENT

In addition to being a major regulator of blood pressure, the octapeptide Angiotensin II (Ang II) is a modulator of cellular growth. Ang II exerts a positive or negative effect on cell growth depending on which subtype of receptor is activated. The possible role of Ang II as a growth promoting or modulating factor has recently become a field of intensive research [Deshayes and Nahmias, 2005; Landon and Inagami, 2005; Godeny and Sayeski, 2006; Hunyady and Catt, 2006].

Ang II acts on its target tissues through binding to membrane receptors. Two main subtypes of Ang II receptors have been described, AT₁ receptors specifically blocked by Losartan (Los) and AT₂ receptors selectively displaced by CGP42112 or PD123319 [De Gasparo et al., 2000; Gallinat et al., 2000]. Both receptor subtypes belong to the superfamily of G-protein coupled receptors [Murphy et al., 1991; Sasaki et al., 1991; Mukoyama et al., 1993;

Kambayashi et al., 1993] but they induce opposite biological effects, including vasoconstriction and cell growth [Horiuchi et al., 1999; Inagami et al., 1999], through different intracellular signaling pathways.

The multiple transduction pathways of AT₁ receptors have been recently reviewed [Hunyady and Catt, 2006; Higuchi et al., 2007]. The AT₁ subtype interacts with multiple heterotrimeric G-proteins, including G_{q/11}, G_i, G₁₂ and G₁₃ and produces different physiological effects [Higuchi et al., 2007]. AT₁ receptors have the ability to activate various intracellular kinases, such as tyrosine kinases and serine/threonine kinases, the MAPK family, including p38MAPK, Akt/PKB and various isoforms of PKC [Yin et al., 2003; Godeny et al.⁰², 2005; Hunyady and Catt, 2006; Kang et al., 2006; Higuchi et al., 2007]. The AT₁ subtype mediates transactivation of the epidermal growth factor (EGF) receptor [Eguchi et al., 1998],

S.E. Alvarez and L.R. Seguin contributed equally to this study.

Grant sponsor: [CONICET⁰¹ ANPCYT]; Grant numbers: PICT 01-9759, PICT 5-32350; Grant sponsor: Universidad Nacional de San Luis.

*Correspondence to: Dr. Gladys M. Ciuffo, Facultad de Química, Bioquímica y Farmacia, Instituto Multidisciplinario de Investigaciones Biológicas (IMIBIO-CONICET), Universidad Nacional de San Luis, Ejército de los Andes 950, 5700 San Luis, Argentina. E-mail: gciuffo@unsl.edu.ar

Received 12 November 2007; Accepted 23 June 2008 • DOI 10.1002/jcb.21866 • 2008 Wiley-Liss, Inc.

promotes tyrosine phosphorylation of insulin receptor substrate 1 (IRS-1) and its association with the tyrosine phosphatase SHP-2 [Ali et al., 1997]. In rat liver, AT₁ receptors inhibit insulin-induced tyrosine phosphorylation of IRS-4, suggesting transactivation of insulin receptors [Villarreal et al., 2006].

The AT₂ receptor subtype is much less well characterized, and its physiological role is not completely understood [De Gasparo et al., 2000; Gallinat et al., 2000; Landon and Inagami, 2005; Li et al., 2007]. AT₂ receptors are abundantly expressed in fetal tissues and immature brain, but they are present only at low levels in certain adult tissues [De Gasparo et al., 2000; Gallinat et al., 2000]. The specific localization of AT₂ receptors in embryonic and neonatal tissues suggests a possible role of these receptors in growth and organogenesis [Arce et al., 2001]. Although their physiological functions are not well-established, it is now accepted that AT₂ receptors mediate anti-growth and apoptotic actions of Ang II [Deshayes and Nahmias, 2005].

The AT₂ receptor activates unconventional signaling pathways, which in most cases do not involve coupling to classical regulatory G-proteins [Nouet et al., 2004; Landon and Inagami, 2005]. AT₂ signaling pathways in relation to cell growth and differentiation are still under revision, although increasing evidence supports a role mediated by coupling to protein tyrosine phosphatases (PTPs) [Matsubara et al., 2001; Cui et al., 2001; Feng et al., 2002, 2005; Gendron et al., 2003; Li et al., 2007]. Recently, we have shown that Ang II stimulates a rapid tyrosine (Tyr) dephosphorylation of several proteins in rat whole fetal (E20) tissue preparations [Ciuffo et al., 1998] and in rat fetal kidney [Alvarez et al., 2003]. AT₂ receptor stimulation also induces neurite outgrowth and regulates neurofilaments in neural cell lines, NG108-15 cells, PC12W cells and fetal brain [Gendron et al., 2003; Li et al., 2007]. Interestingly, over expression of Ang II AT₂ receptors in CHO cells leads to induction of apoptosis independent of receptor conformation and ligand stimulation [Miura and Karnik, 2000; Miura et al., 2005]. On the other hand, negative cross-talk between Ang II AT₂ receptor subtype and insulin receptors has been recently reported [Elbaz et al., 2000].

Several interacting proteins of AT₂ receptors, such as AT₂ receptor interacting protein (ATIP) [Nouet et al., 2004] and SHP-1 have been described as partners of AT₂ receptor signaling [Landon and Inagami, 2005]. SHP-1 (also named as SHPTP-1, SHP or HCP) is a non-transmembrane PTPase that contains two Src homology 2 (SH2) domains involved in its association with multiple signaling molecules [Bousquet et al., 1998; Feng et al., 2002, 2005]. SHP-1 can be either phosphorylated or dephosphorylated in response to activation of G-protein coupled receptors, such as the sst2 Somatostatin receptor and the AT₂ Ang II receptor [López et al., 1997; Bousquet et al., 1998; Cui et al., 2001; Li et al., 2007].

SHP-1 is predominantly expressed in hematopoietic cells, generally acting as a negative regulator [Neel et al., 2003]. SHP-1 inhibits cell proliferation and mitogenic signals by dephosphorylation of critical molecules [Kozlowski et al., 1998]. Evidence suggests a negative role of SHP-1 on proliferative pathways [López et al., 1997; Bousquet et al., 1998; Kozlowski et al., 1998; Cui et al., 2001; Matsubara et al., 2001; Neel et al., 2003]. There is evidence that c-Src and SHP-1 are closely related and both participate in the regulation of phosphorylation sequences [Somani et al., 1997; Roskoski, 2004].

Based on enzymatic data and modeling studies, Frank et al. [2004] proposed that c-Src and SHP-1 might have complementary substrate selectivity.

In the present study we show that Ang II-induced protein tyrosine dephosphorylation in rat fetal membranes (E20) is mediated by the AT₂ receptor subtype. We provide evidence that Ang II stimulation leads to physical association of AT₂ receptors with SHP-1, as well as phosphorylation and functional activation of the SHP-1 tyrosine phosphatase. Co-immunoprecipitation assays demonstrate a concomitant association of AT₂ receptors and SHP-1 to c-Src kinase, and the use of specific Src inhibitor PP2 further suggests a role for this cytosolic tyrosine kinase in the AT₂/SHP-1 signaling pathway in rat fetal membranes.

MATERIALS AND METHODS

MATERIALS

Drugs were obtained from commercial suppliers: Bovine serum albumine, BSA fraction V, Triton X-100 and Sodium orthovanadate were from Sigma Chemical Co. (St. Louis, MO). Ang II, PP2 and PP3 were from Calbiochem (La Jolla, CA); Losartan was a gift from Dr. R. Smith (Dupont, Wilmington, DE) and PD123319 was derived from RBI (Natick, MA). [¹²⁵I]Sar¹Ile⁸Ang II was from Dupont-NEN (Boston, MA). Polyvinylidene difluoride membranes (PVDF) were Immobilon P (Millipore Corp., Bedford, MA). CHAPS was purchased from J.T.Baker (Phillipsburg, NY). All other reagents were from the highest available quality.

Rabbit polyclonal anti-SHP-1 antibody was produced as described [Bedecs et al., 1997]. Rabbit anti-c-Src polyclonal antibody (Santa Cruz Biotechnology, Inc., Santa Cruz, CA) was a gift from Dr. JM Saavedra. PY99 mouse monoclonal anti-phosphotyrosine antibody, goat polyclonal anti-AT₂, mouse anti-SHP-1 antibody and secondary antibodies were purchased from (Santa Cruz Biotechnology)

ANIMALS

Adult female Wistar rats were kept in a dark-light cycle (12:12 h) and provided with standard rat food and water ad libitum. Day 0 of pregnancy was defined by sperm presence in vaginal smears. Pregnant rats were sacrificed by decapitation at day 20 and the fetuses immediately removed. Fetuses (E20) were sacrificed by decapitation, the viscera were removed and tissues for membrane preparation were collected on hypotonic buffer (50 mM Tris-HCl, 5 mM EDTA, pH 7.4) at 4°C and processed as below.

MEMBRANE PREPARATION

For membrane preparation tissues were homogenized in 40 volumes of hypotonic buffer using an Ultraturrax T25 homogenizer (Janke & Kunkel KG, IKA-Wak D7813 Staufer) 3 times, 10 s each, as described [Alvarez et al., 2003]. The homogenate was centrifuged at 1,000g for 10 min to separate nuclear and cellular debris. The supernatant was centrifuged at 15,000g for 60 min. The pellet was washed twice on hypotonic buffer and resuspended in isotonic buffer (50 mM Tris-HCl, 5 mM EDTA, 120 mM KCl, 10% glycerol, pH 7.4) and used as the source of receptors. All procedures were conducted at 4°C. Membranes were stored at -20°C and stable for at least 2 months. Protein concentration was determined by Bradford method.

PHOSPHORYLATION ASSAYS

Rat fetal membranes (400–600 μg protein) were stimulated in the presence of Ang II alone or in combination with different Ang II competitors at the indicated concentrations. Controls were done replacing Ang II with water. When indicated, Na_3VO_4 (1 mM) was included in the assay, 10 min prior to stimulation. The reaction was performed in a final volume of 100 μl for the indicated times at 20°C in phosphorylation buffer (20 mM HEPES, 60 mM NaCl, 0.1% BSA, pH 7.2). After stimulation, phosphorylation was conducted in the presence of ATP-Mg for 10 min (0.1 mM ATP, 20 mM MgCl_2). The reaction was stopped by adding 1 ml of cold phosphorylation buffer. The membrane proteins were recovered by centrifugation at 15,000g, solubilized and immunoprecipitated.

IMMUNOPRECIPITATION AND IMMUNOBLOTTING

After phosphorylation assays, pellets were solubilized in buffer A (20 mM HEPES, 150 mM NaCl, 5 mM EDTA, 1 mM Na_3VO_4 , pH 7.2) containing 1.2% of CHAPS or 1% of Triton X-100 (60 min at 4°C) with gentle agitation and then centrifuged at 15,000g for 30 min. Immunoprecipitations were carried out by adding to the supernatants the indicated primary antibodies (2 μl). Antibodies were allowed to equilibrate with solubilized proteins overnight at 4°C, followed by the addition of protein A/G plus agarose (15 μl) for 3 h at 4°C. Immunocomplexes were recovered by centrifugation at 1,000g, washed 3 times with buffer A, and subjected to SDS-PAGE (7.5%). Proteins were transferred onto PVDF membranes and blots were blocked with 3% BSA in TBS (20 mM Tris-HCl pH 7.4, 0.9% NaCl) for 60 min at room temperature.

Proteins were immunoblotted with the indicated antibodies (1:1,000) followed by incubation with the secondary antibody (1:2,000 for AP-coupled and 1:5,000 for HRP-coupled antibodies). Blots were developed with BCIP-NBT for Alkaline Phosphatase-coupled antibodies or ECL for HRP-coupled antibodies and the results were analyzed by the Adobe Photoshop Software. Stripping of membranes was achieved by incubation in buffer (62.5 mM Tris, 2% SDS, 100 mM β -mercaptoethanol) for 10 min, 50°C. Membranes were reprobbed for loading control.

BINDING ON IMMUNOCOMPLEXES

For binding studies on the immunocomplexes, rat fetal membranes were stimulated with Ang II (10^{-8} M) in the absence or in the presence of PD123319 (10^{-6} M), phosphorylated and solubilized. Binding was performed on CHAPS-solubilized rat fetal membranes by incubating with [^{125}I]Sar¹Ile⁸Ang II 10 nM for 90 min at RT, either in the absence or in the presence of cold Ang II (10^{-6} M, non-specific binding) or PD123319 (10^{-6} M), followed by immunoprecipitation with anti-SHP-1 antibody and Protein A-agarose. Radioactivity kept on the immunocomplexes was measured in an LKB gamma counter.

IMMUNOPRECIPITATION AND SHP-1 ACTIVITY ASSAY

Following stimulation, the supernatants of Triton X-100 solubilized membranes (100–150 μg protein) were incubated overnight with 2 μl of anti-SHP-1 or anti-AT₂ antibodies and processed as before. The immunocomplexes were resuspended in 40 μl PTPase buffer (20 mM HEPES, 60 mM NaCl, 0.1% BSA, pH 7.2) and 40 μl of

Tyr-phosphopeptide (DADE(pY)LIPQQG) were added at final concentration 10^{-4} M using PTPase assay kit (Promega) according to the manufacturer's protocol. The PTPase activity was assayed by measuring release of inorganic phosphate from phosphopeptides based on a malachite green detection system [Harder et al., 1994]. Following incubation for 30 min at RT, 400 μl of Dye mixture solution was added and optical densities measured at 600 nm by spectrophotometer and quantified using the calibration curve performed with standards (Promega). To test the participation of c-Src in SHP-1 activation via AT₂ receptors, membranes were preincubated with PP2 (10 μM , 1 h), an Src inhibitor or its inactive analog PP3 (10 μM , 1 h), as described [Bursell et al., 2007].

STATISTICAL ANALYSIS

Values are expressed as mean \pm SEM in the text and figures. Western blots were quantified in Scion Image and analyzed using PRISM package. Values of *P* considered to be statistically significant: **P* < 0.05, ***P* < 0.01; ****P* < 0.001.

RESULTS

ANG II INDUCES PROTEIN TYROSINE DEPHOSPHORYLATION

In a previous article we demonstrated that Ang II induced protein Tyr-dephosphorylation in rat fetal E20 membrane preparation [Ciuffo et al., 1998].

The present study aims at analyzing the molecular mechanisms involved in Ang II-mediated dephosphorylation. Initially, we performed time course experiments, in which rat fetal (E20) membranes (100 μg) were stimulated with Ang II (10^{-7} M) for different periods of time, and Tyr-phosphorylated proteins were detected by Western blot. Protein Tyr-dephosphorylation was maximal after 8 min of stimulation (Fig. 1). Ang II induced Tyr-dephosphorylation of proteins of different molecular masses (Fig. 1, arrows). Preincubation with sodium orthovanadate (1 mM, 10 min) leads to a large increase in phosphotyrosine-containing proteins at basal levels and prevents Ang II-induced dephosphorylation as previously described [Alvarez et al., 2003].

AT₂ RECEPTORS INDUCE TYR-PHOSPHORYLATION OF SHP-1 PTPase

The rapid and transient protein tyrosine dephosphorylation induced by Ang II and reversed by vanadate, suggests the involvement of a vanadate-sensitive PTPase. Because SHP-1 was shown to be important for AT₂ signaling in different cell lines, we sought to determine its involvement in this pathway. To test this hypothesis, rat fetal membranes were stimulated with Ang II (10^{-7} M) and Tyr-phosphorylation of SHP-1 was analyzed. Proteins were solubilized and immunoprecipitated with anti-SHP-1 antibodies and the immunocomplexes were separated by SDS-PAGE. Phosphorylation of the PTPase was assessed by Western blotting, using mouse monoclonal PY99 anti-p-Tyr antibodies. Ang II induced a rapid and transient phosphorylation of SHP-1 (Fig. 2A), maximal after 1 min stimulation (*n* = 6). Blots were stripped and reprobbed with anti-SHP-1 antibody and the ratio of SHP-1 phosphorylation/SHP-1 was plotted (Fig. 2A), lower panel.

To further characterize this effect, variable Ang II concentrations (10^{-6} – 10^{-8} M) were assayed after 1 min stimulation. Even at low

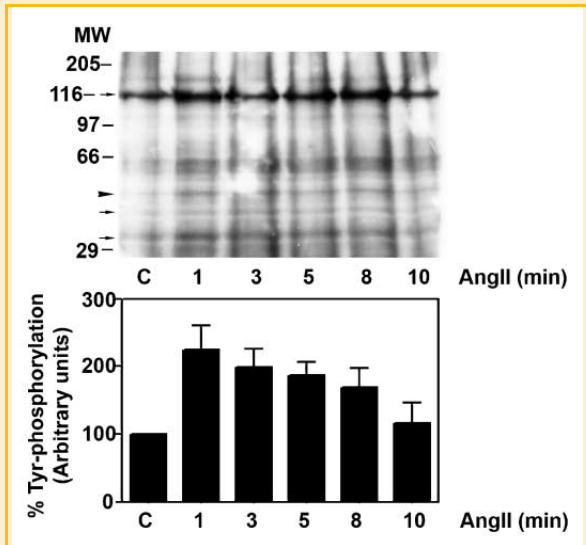


Fig. 1. Dephosphorylation induced by Ang II in rat fetal membranes. Rat fetal membranes (100 μ g prot), were stimulated with Ang II (10^{-7} M) for different times. Proteins were subjected to 7.5% SDS-PAGE and immunoblotted with anti-p-Tyr antibody (PY99). Representative image and histogram of densitometric data as mean \pm SEM (n = 3). Arrows point to the proteins analyzed.

Ang II concentrations (10^{-8} M), SHP-1 was phosphorylated (Fig. 2B). The time- and dose-dependent phosphorylation of SHP-1 suggest a biological meaning of the signal transduction studied.

Both Ang II receptor subtypes are present in E20 fetal membrane preparation. To identify the receptor subtype involved in SHP-1 phosphorylation, assays were performed in the presence of specific competitors for either AT₁ (Losartan) or AT₂ (PD123319) receptors. Aliquots of membrane preparation were preincubated (10 min) with different concentrations of the competitors (Losartan 10^{-6} – 10^{-5} M, PD123319 10^{-6} – 10^{-5} M), followed by stimulation with Ang II (10^{-7} M, 1 min) and phosphorylation assay. Competitors were present during Ang II stimulation. While the AT₁ competitor, Losartan, did not prevent SHP-1 Tyr-phosphorylation, the AT₂ antagonist, PD123319 completely blocked the effect of Ang II (Fig. 3), thus indicating that SHP-1 phosphorylation was mediated exclusively by AT₂ receptors. Blots were stripped and reprobed with anti-SHP-1 antibody and the ratio of SHP-1 phosphorylation/SHP-1 was plotted (Fig. 3).

AT₂ RECEPTORS ASSOCIATE TO SHP-1

To determine whether Ang II AT₂ receptors were physically associated to the phosphatase, co-immunoprecipitation assays were performed. After stimulation with Ang II (10^{-7} M) and phosphorylation, membranes were solubilized and immunoprecipitated with goat-anti AT₂ receptor antibody. Immunocomplexes were separated by SDS-PAGE and blotted with anti-SHP-1 antibody, revealing the presence of a polypeptide of apparent molecular weight 65 kDa corresponding to SHP-1 (Fig. 4A, upper panel). Equal protein loading was assessed by reprobing the membrane with anti-AT₂ antibody (Fig. 4A, lower panel). Co-immunoprecipitation of AT₂

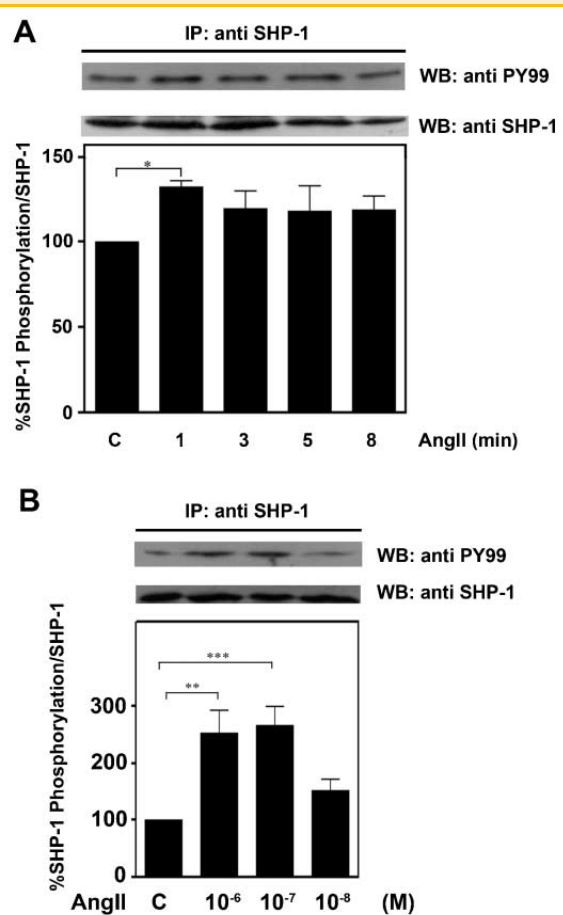


Fig. 2. SHP-1 Tyr-phosphorylation dependence of time and dose of Ang II. **A:** Time course of SHP-1 Tyr-phosphorylation. Membranes were stimulated with Ang II (10^{-7} M) for different times (1–8 min). C: Control without stimulation. Solubilized samples were immunoprecipitated with anti-SHP-1 antibody and then blotted with anti-p-Tyr antibody (upper panel). Blots were stripped and reprobed with anti-SHP-1 antibody (bottom). Representative image and histogram of the ratio of SHP-1 phosphorylation level/SHP-1 (mean \pm SEM, n = 6). **B:** Dose-dependency of SHP-1 Tyr-phosphorylation. Membranes were stimulated for 1 min in the absence (C) or in the presence of Ang II (10^{-6} – 10^{-8} M). Samples were solubilized, immunoprecipitated with anti-SHP-1 antibody and then blotted with either anti-p-Tyr antibody (upper panel). Blots were stripped and reprobed with anti-SHP-1 antibody (bottom). Representative image and histogram of the ratio of SHP-1 phosphorylation level/SHP-1 (mean \pm SEM, n = 8).

receptors and SHP-1 phosphatase was inhibited by preincubation with the AT₂ competitor PD123319 (10^{-6} M) but not Losartan (10^{-6} M) (Fig. 4A). While both SHP-1 and AT₁ receptors were present in membranes (Fig. 4B, left panel), immunocomplexes obtained by using anti-AT₁ antibody did not contain SHP-1 (Fig. 4B, right panel). Taken together, these results indicate that SHP-1 associates to AT₂ but not to AT₁ receptors, following stimulation with Ang II (10^{-7} M).

To further confirm whether AT₂ receptors are coupled to SHP-1, we performed binding assays on CHAPS-solubilized membranes followed by immunoprecipitation with anti-SHP-1 antibodies.

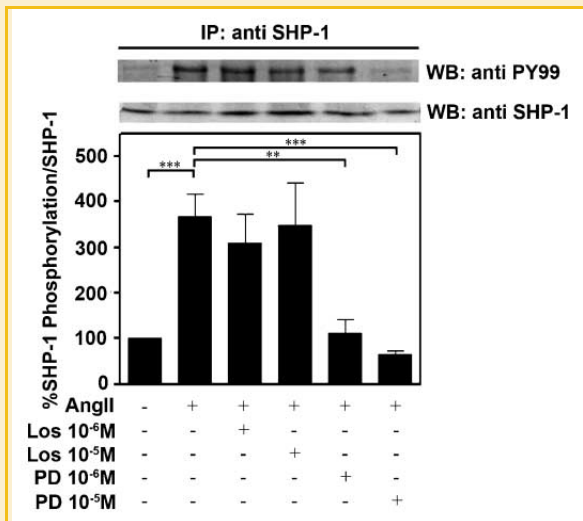


Fig. 3. SHP-1 Tyr-phosphorylation is mediated by Ang II AT₂ receptors. Membranes were stimulated with Ang II (10⁻⁷ M) for 1 min, either alone or plus Losartan (10⁻⁶, 10⁻⁵ M), or PD123319 (10⁻⁶, 10⁻⁵ M). Subsequently, membranes were solubilized, immunoprecipitated with anti-SHP-1 antibody and then blotted with anti-p-Tyr antibody (upper). Blots were stripped and reprobed with anti-SHP-1 antibody (bottom). Representative image and histogram of the ratio of SHP-1 phosphorylation level/SHP-1 (mean ± SEM, n = 8).

In order to promote SHP-1 association to AT₂ receptors, rat fetal membranes (600 μg protein) were stimulated with Ang II (10⁻⁸ M, 1 min) alone or in combination with PD123319 (10⁻⁶ M), followed by solubilization with CHAPS (1.2%). CHAPS-solubilized proteins were incubated at RT for 90 min with [¹²⁵I]Sar¹Ile⁸Ang II (10 nM) either in the absence (total binding) or in the presence of an excess of Ang II (10⁻⁶ M, non-specific) or PD123319 (10⁻⁶ M, PD) (Fig. 4C). At the end of the assay, proteins were immunoprecipitated with anti-SHP-1 antibody and pellets were counted on an LKB gamma counter (Fig. 4C). The presence of PD123319 during the phosphorylation and binding assays prevented SHP-1 association to the receptor and thus ligand binding to AT₂ receptors. Non-specific binding, defined with an excess of Ang II (10⁻⁶ M), was comparable to binding in the presence of PD123319, thus suggesting the absence of AT₁ receptors in the immunocomplexes. Figure 4C shows the crude values of binding. Although Ang II concentration used during the stimulation step was low (10⁻⁸ M), we observed an induction of the association of SHP-1 to AT₂ receptors.

SHP-1 ACTIVITY IN AT₂ IMMUNOCOMPLEXES

The data shown in Figure 4 demonstrated the physical association of SHP-1 and AT₂ receptors, while Figure 2 shows the transient phosphorylation of SHP-1. To test if SHP-1 was activated after Tyr-phosphorylation, we performed PTPase activity assays on immunocomplexes obtained with anti-AT₂ antibodies in the presence or absence of PD123319 (10⁻⁶ M) after 1 min stimulation with Ang II (Fig. 5A). In both cases, Ang II enhanced the enzymatic activity of SHP-1, which was inhibited by preincubation with

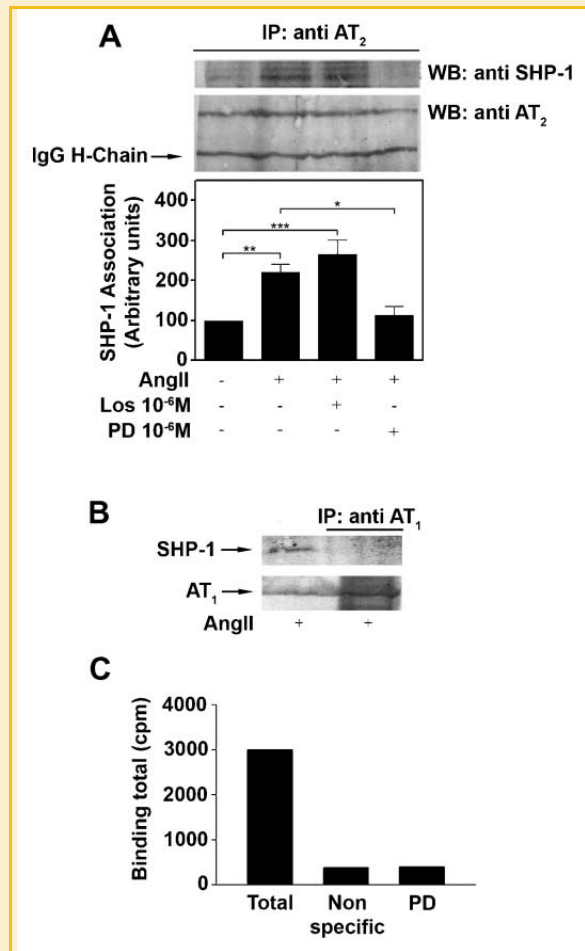


Fig. 4. SHP-1 Tyrosine phosphatase is associated to AT₂ receptors. A: Coprecipitation of SHP-1 and AT₂ receptor. Rat fetal (E20) membranes were stimulated for 1 min with Ang II (10⁻⁷ M), in the absence, or in the presence of Losartan (10⁻⁶ M), Los, or PD123319 (10⁻⁶ M, PD). Solubilized membranes were immunoprecipitated with goat anti-AT₂ antibody and developed with mouse anti-SHP-1 antibody (upper panel). Blots were stripped and reprobed with anti-AT₂ antibody (lower panel) to confirm equal precipitation across all lanes. Representative image and histogram of densitometric data as mean ± SEM (n = 5). B: Immunocomplexes obtained with anti-AT₁ antibody do not contain SHP-1. Lane 1: Rat fetal membranes were stimulated with Ang II (10⁻⁷ M, 1 min) and immunoblotted with anti-SHP-1 (upper panel) or anti-AT₁ (lower panel) antibody as a control. Lane 2: Rat fetal (E20) membranes were stimulated with Ang II (10⁻⁷ M, 1 min), solubilized and immunoprecipitated with anti-AT₁ antibody and developed with anti-SHP-1 antibody (upper panel) or with anti-AT₁ antibody (lower panel). C: AT₂ receptors are present on SHP-1 immunocomplexes. Binding of [¹²⁵I]Sar¹Ile⁸Ang II (10 nM) was performed on CHAPS-solubilized membranes after Ang II stimulation. Rat fetal membranes (600 μg protein) were stimulated with Ang II (10⁻⁸ M, 1 min) alone or in combination with PD123319 (10⁻⁶ M, PD). CHAPS-solubilized proteins were incubated at RT for 90 min with [¹²⁵I]Sar¹Ile⁸Ang II (10 nM) either in the absence total binding or in the presence of an excess of Ang II (10⁻⁶ M, non-specific) or PD123319 (10⁻⁶ M, PD). Proteins were immunoprecipitated with anti-SHP-1 antibody and pellets were counted on an LKB gamma counter.

the AT₂ competitor, PD123319 (Fig. 5A). Taken together, these results as well as the association between AT₂ and SHP-1 (Fig. 4), indicate that both, association and activation of SHP-1, result from the specific stimulation of AT₂ receptors by Ang II.

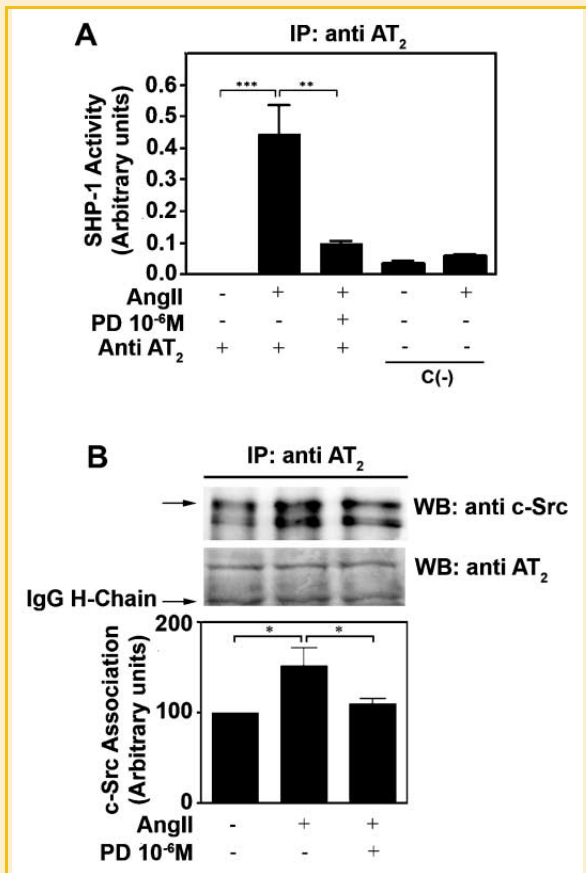


Fig. 5. SHP-1 activity in AT_2 immunocomplexes. **A:** Detection of SHP-1 activity in immunocomplexes obtained with anti- AT_2 antibody. Aliquots of membranes (600 μ g) were stimulated with Ang II (10^{-7} M, 1 min) in the presence or absence of PD123319 (10^{-6} M), solubilized and immunoprecipitated. SHP-1 activity in immunocomplexes was determined by measuring the released phosphate (mean \pm SEM, $n=3$). C(-): IP control experiment without anti- AT_2 antibody. **B:** c-Src associates to AT_2 receptors. Co-immunoprecipitation of c-Src and AT_2 receptors. Rat fetal (E20) membranes were stimulated with Ang II (10^{-7} M, 1 min) in the presence or absence of PD123319 (10^{-6} M). Solubilized membranes were immunoprecipitated with anti AT_2 antibody and developed with anti-c-Src antibody (upper panel). Blots were stripped and reprobed with anti- AT_2 antibody (lower panel) to confirm equal precipitation across all lanes. Representative image and histogram of densitometric data as mean \pm SEM ($n=8$).

c-Src IS INVOLVED IN SHP-1 ACTIVATION BY AT_2 RECEPTORS

Tyrosine phosphorylation of SHP-1, following Ang II stimulation, suggested the contribution of a tyrosine kinase in this signaling pathway. To test this hypothesis, we searched for the recruitment of c-Src kinase family in AT_2 immunocomplexes. Figure 5B shows the presence of c-Src kinase in AT_2 immunocomplexes after 1 min stimulation with Ang II. Preincubation with PD123319 (10^{-6} M) prevented c-Src recruitment.

To confirm the previous results we measured SHP-1 activity in SHP-1 immunocomplexes. Ang II (10^{-7} M, 1 min) induced SHP-1 activity, while an excess of the AT_2 competitor PD123319 prevented SHP-1 activation (see Fig. 6A). To test the participation of c-Src in

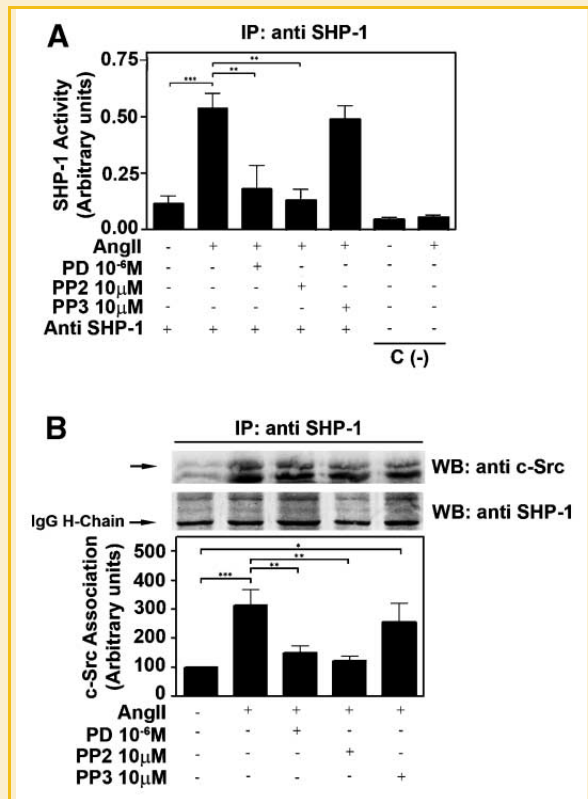


Fig. 6. c-Src is involved in SHP-1 activation by AT_2 receptors. **A:** Detection of SHP-1 activity in immunocomplexes obtained with anti-SHP-1 antibody. Aliquots of membranes (600 μ g) were pre-incubated with PD123319 (10^{-6} M, 10 min), PP2 (10 μ M, 60 min) or PP3 (10 μ M, 60 min) and then stimulated with Ang II (10^{-7} M, 1 min). Membranes were solubilized, immunoprecipitated and SHP-1 activity in immunocomplexes was determined by measuring the released phosphate (mean \pm SEM, $n=7$). C(-): IP control experiment without anti- AT_2 antibody. **B:** c-Src associates to SHP-1 immunocomplexes. Following the assays shown in (A), immunocomplexes were recovered by centrifugation, washed and immunoblotted to detect the presence of c-Src (upper panel) or SHP-1 (lower panel). Representative image and histogram of densitometric data as mean \pm SEM ($n=8$).

SHP-1 activation via AT_2 receptors, we performed the assay in the presence of c-Src inhibitor PP2 or its inactive analog PP3. Preincubation with PP2 (10 μ M, 60 min) prevented SHP-1 activation (Fig. 6A) while the activity in presence of PP3 (10 μ M, 60 min) was unchanged.

To further verify c-Src participation in this pathway, we searched for the presence of c-Src kinase in SHP-1 immunocomplexes, recovered from the activation assay. Preincubation with PP2 (10 μ M, 60 min) prevented SHP-1 activation as well as c-Src association to SHP-1 immunocomplexes (Fig. 6B).

From the results shown in Figures 5 and 6, activation of AT_2 receptors induce the formation of a complex, where c-Src or a member of the non-receptor tyrosine kinase family, mediate the phosphorylation and activation of SHP-1. Thus, SHP-1 mediates protein Tyr-dephosphorylation, leading to specific cell effects.

DISCUSSION

The aim of the present study was to analyze the regulation of SHP-1 phosphatase activity following Ang II receptor stimulation and to investigate the coupling of AT₂ receptors with PTPase in membrane preparations from rat fetal (E20) tissues. Fetal membranes were selected as a model of study because fetuses represent a physiological developmental state where both Ang II receptor subtypes are expressed and because it has been postulated that Ang II receptors could be involved in growth modulation. Moreover, opposite intracellular effects of AT₁ and AT₂ receptors on vasoconstriction/vasodilation and proliferation/apoptosis, among others, have been shown [Inagami et al., 1999; Horiuchi et al., 1999; Landon and Inagami, 2005; Deshayes and Nahmias, 2005].

In a previous article, we demonstrated that Ang II receptors mediate Tyr-dephosphorylation of several proteins in fetal E20 membrane preparations. We left an open question whether Ang II stimulates a Tyr-phosphatase or inhibits a Tyr-kinase. In the present article, we address this question and demonstrate, in membrane preparations from fetal (E20) rats which contain both Ang II receptor subtypes, the involvement of c-Src in the activation of PTPase SHP-1, mediated by Ang II AT₂ receptors.

Although discrepancies exist regarding the role of G-proteins in the AT₂ pathway, it is now accepted that AT₂ receptors can couple to multiple signaling molecules. However, there is consistency among different authors that stimulation of AT₂ receptors leads to activation of tyrosine or serine/threonine phosphatases in different cell lines and fetal tissues [Bousquet et al., 1998; Cui et al., 2001; Gendron et al., 2003; Nouet et al., 2004; Wu et al., 2004; Li et al., 2007].

By means of immunoprecipitation studies combined with Western blot we demonstrated that Ang II elicits a dose-dependent, rapid and transient phosphorylation of SHP-1 phosphatase. Competition studies with specific antagonists showed that only AT₂ receptors are involved in the phosphorylation of SHP-1. The rapid time-course of SHP-1 phosphorylation (maximal at 1 min) precedes the induction of protein tyrosine dephosphorylation (maximal at 8 min), suggesting that SHP-1 is an upstream component in the AT₂ intracellular cascade. The lag time between maximal SHP-1 phosphorylation and maximal protein tyrosine dephosphorylation suggest that SHP-1 affects downstream substrates. Although SHP-1 regulation seems to be highly complex, our observations agree with previous reports from several authors [Cui et al., 2001; Matsubara et al., 2001; Feng et al., 2002; Frank et al., 2004] where activation of SHP-1 was associated to tyrosine phosphorylation.

Co-precipitation studies demonstrated that SHP-1 physically associates to AT₂ receptors. The physical association was induced by receptor stimulation and selectively blocked by PD123319, thus confirming the involvement of AT₂ receptors and suggesting an active role for these receptors. Miura and Karnik [2000] and Miura et al. [2005] proposed that AT₂ receptors are constitutively activated on cells over expressing AT₂ receptors. We assume that transfected cells may differ from the physiological situation. In contrast, our model of rat fetal (E20) membrane preparations represents a physiological state where both receptor subtypes coexist [Ciuffo et al., 1998].

SHP-1 activity was detected in immunocomplexes, evidencing an increased activity following Ang II stimulation, which was selectively blocked by PD123319. This effect, observed in both anti-AT₂ and anti-SHP-1 immunocomplexes demonstrates that Tyr-phosphorylation of SHP-1 leads to activation of the phosphatase, as previously suggested [Feng et al., 2002]. On the other hand, we do not observe a constitutive physical association between the AT₂ receptor and SHP-1, as was indicated by other authors in an enforced expression model [Feng et al., 2002; Miura et al., 2005]. Over-expression of proteins can lead to effects that differ from those present *in vivo*. Our model, which takes *ex vivo* material at a time where high levels of AT₂ receptors are expressed, might represent a physiological state during development. Recent studies have been conducted on tissues where both Ang II receptor subtypes are expressed, such as fetal VSMC cells and fetal brain, where AT₂ receptors seem to mediate cell differentiation with participation of SHP-1 [Wu et al., 2004; Li et al., 2007].

AT₂ receptors belong to the superfamily of G-protein coupled receptors with seven transmembrane domains and therefore, they lack intrinsic catalytic activity. Since several authors pointed out that c-Src can modulate SHP-1 activity [Somani et al., 1997; Frank et al., 2004], we looked for the presence of c-Src in the immunocomplexes. Interestingly, following receptor stimulation (1 min) c-Src was associated to AT₂ or SHP-1 immunocomplexes. Precubination with the c-Src inhibitor PP2 inhibited SHP-1 activation and c-Src association, thus confirming the participation of c-Src in this pathway.

Development is an intricated process where growth and anti-growth signals combine in a coordinated way and protein phosphorylation is part of the process control. A number of recent evidences suggest opposite effects of Ang II receptor subtypes AT₁ and AT₂ [Inagami et al., 1999; Horiuchi et al., 1999; Landon and Inagami, 2005; Deshayes and Nahmias, 2005]. Although the role of the AT₂ receptor in fetal development is not yet clearly established, the fact that they are coupled to SHP-1 phosphatase in fetal tissues during a critical developmental stage, is a strong support for the anti-growth role of AT₂ receptors. Both AT₁ and AT₂ receptors in rat fetal membrane preparations may play a crucial role in determining cell fate during developmental stages by mutual interactions.

In summary, we demonstrate here for the first time the involvement of c-Src in SHP-1 activation via AT₂ receptors present in an *ex vivo* model expressing both receptor subtypes. In this model, AT₂ receptors are not constitutively associated to SHP-1 nor is SHP-1 constitutively activated. Thus, we clearly establish that AT₂ receptors mediate tyrosine phosphorylation and activation of SHP-1, leading to protein tyrosine dephosphorylation in rat fetal membranes, by a mechanism involving c-Src kinase association and activation.

ACKNOWLEDGMENTS

We wish to thank Dr. J.M. Saavedra and Dr. R. Smith for reagent contributions. G.M. Ciuffo is a member of the researcher's career of CONICET (Consejo Nacional de Investigaciones Científicas y Tecnológicas, Argentina). S.E. Alvarez, R.S. Villarreal and L.R. Seguin have fellowships from CONICET, Argentina. This work was

supported by grants from CONICET, PICT 01-9759 (ANPCYT) and Universidad Nacional de San Luis, Argentina.

REFERENCES

- Ali MS, Schiefer B, Delafontaine P, Bernstein KE, Ling BN, Marrero MB. 1997. Angiotensin II stimulates tyrosine phosphorylation and activation of insulin receptor substrate 1 and protein-tyrosine phosphatase 1D in vascular smooth muscle cells. *J Biol Chem* 272:12373–12379.
- Alvarez SE, Fuentes LB, Ciuffo GM. 2003. Angiotensin II mediates Tyrosine dephosphorylation in rat fetal kidney membranes. *Mol Cell Biochem* 254:137–143.
- Arce ME, Sanchez S, Seltzer A, Ciuffo GM. 2001. Autoradiographic localization of angiotensin II receptors in developing rat cerebellum and brainstem. *Regul Pept* 99:53–60.
- Bedecs K, Elbaz N, Sutren M, Masson M, Susini C, Strosberg AD, Nahmias C. 1997. Angiotensin II type 2 receptors mediate inhibition of mitogen-activated protein kinase cascade and functional activation of SHP-1 tyrosine phosphatase. *Biochem J* 325:449–454.
- Bousquet C, Delesque N, Lopez F, Saint-Laurent N, Esteve JP, Bedecs K, Buscaill L, Vaysse N, Susini C. 1998. sst2 somatostatin receptor mediates negative regulation of insulin receptor signaling through the tyrosine phosphatase SHP-1. *J Biol Chem* 273:7099–7106.
- Bursell L, Woods A, James CG, Pala D, Leask A, Beier F. 2007. Src kinase inhibition promotes the chondrocyte phenotype. *Arthritis Res Ther* 9:R105–R116.
- Ciuffo GM, Alvarez SE, Fuentes LB. 1998. Angiotensin II receptors induce tyrosine dephosphorylation in rat fetal membranes. *Regul Pept* 74:129–135.
- Cui TX, Nakagamia H, Iwaia M, Takedaa Y, Shiuchia T, Daviet L, Nahmias C, Horiuchi M. 2001. Pivotal role of tyrosine phosphatase SHP-1 in AT₂ receptor-mediated apoptosis in rat fetal vascular smooth muscle cell. *Cardiovasc Res* 49:863–871.
- De Gasparo M, Catt KJ, Inagami T, Wright JW, Unger TH. 2000. International union of pharmacology. XXIII. The angiotensin II receptors. *Pharmacol Rev* 52:415–472.
- Deshayes F, Nahmias C. 2005. Angiotensin receptors: A new role in cancer? *Trends Endocrinol Metab* 16:293–299.
- Eguchi S, Numaguchi K, Iwasaki H, Matsumoto T, Yamakawa T, Utsunomiya H, Motley ED, Kawakatsu H, Owada KM, Hirata Y, Marumo F, Inagami T. 1998. Calcium-dependent epidermal growth factor receptor transactivation mediates the angiotensin II-induced mitogen-activated protein kinase activation in vascular smooth muscle cells. *J Biol Chem* 273:8890–8896.
- Elbaz N, Bedecs K, Masson M, Sutren M, Strosberg AD, Nahmias C. 2000. Functional trans-inactivation of insulin receptor kinase by growth-inhibitory angiotensin II AT₂ receptor. *Mol Endocrinol* 14:795–804.
- Feng YH, Sun Y, Douglas JG. 2002. G_{βγ}-independent constitutive association of G_{αs} with SHP-1 and angiotensin II receptor AT₂ is essential in AT₂-mediated ITIM-independent activation of SHP-1. *Proc Natl Acad Sci* 99:12049–12054.
- Feng YH, Zhou L, Sun Y, Douglas JG. 2005. Functional diversity of AT₂ receptor orthologues in closely related species. *Kidney Int* 67:1731–1738.
- Frank C, Burkhardt C, Imhof D, Ringel J, Zschörnig O, Wieligmann K, Zacharias M, Böhmer F. 2004. Effective dephosphorylation of Src substrates by SHP-1. *J Biol Chem* 279:11375–11383.
- Gallinat S, Busche S, Raizada MK, Summers C. 2000. The angiotensin II type 2 receptor: An enigma with multiple variations. *Am J Physiol Endocrinol Metab* 278:E357–E374.
- Gendron L, Payet MD, Gallo-Payet N. 2003. The Angiotensin type 2 receptor of angiotensin II and neuronal differentiation: From observations to mechanisms. *J Mol Endocrinol* 31:359–372.
- Godeny MD, Sayeski PP. 2006. Ang II-induced cell proliferation is dually mediated by c-Src/Yes/Fyn regulated ERK1/2 activation in the cytoplasm and PKCzeta-controlled ERK1/2 activity within the nucleus. *Am J Physiol Cell Physiol* 291:C1297–C1307.
- Harder KW, Owen P, Wong LKH, Aebersold R, Clark-Lewis I, Jirik FR. 1994. Characterization and kinetic analysis of the intracellular domain of human protein tyrosine phosphatase β (HPTPβ) using synthetic phosphopeptides. *Biochem J* 298:395–401.
- Higuchi S, Ohtsu H, Suzuki H, Shirai H, Frank GD, Eguchi S. 2007. Angiotensin II signal transduction through the AT₁ receptor: Novel insights into mechanisms and pathophysiology. *Clin Sci* 112:417–428.
- Horiuchi M, Lehtonen J, Daviet L. 1999. Signaling mechanism of the AT₂ angiotensin II receptor: Crosstalk between AT₁ and AT₂ receptors in cell growth. *Trends Endocrinol Metab* 10:391–396.
- Hunyady L, Catt KJ. 2006. Pleiotropic AT₁ receptor signaling pathways mediating physiological and pathogenic actions of angiotensin II. *Mol Endocrinol* 20:953–970.
- Inagami T, Eguchi S, Numaguchi K, Motley ED, Tang H, Matsumoto T, Yamakawa T. 1999. Cross-talk between angiotensin II receptors and the tyrosine kinases and phosphatases. *J Am Soc Nephrol* 10:S57–S61.
- Kambayashi Y, Bardhan S, Takahashi K, Tsuzuki S, Inui H, Hamakubo T, Inagami T. 1993. Molecular cloning of a novel angiotensin II receptor isoform involved in phosphotyrosine phosphatase inhibition. *J Biol Chem* 268:24539–24542.
- Kang YS, Park YG, Kim BK, Han SY, Jee YH, Han KH, Lee MH, Song HK, Cha DR, Kang SW, Han DS. 2006. Angiotensin II stimulates the synthesis of vascular endothelial growth factor through the p38 mitogen activated protein kinase pathway in cultured mouse podocytes. *J Mol Endocrinol* 36:377–388.
- Kozłowski M, Larose L, Lee F, Le DM, Rottapel R, Siminovitch AK. 1998. SHP-1 binds and negatively modulates the c-Kit receptor by interaction with tyrosine 569 in the c-Kit juxtamembrane domain. *Mol Cell Biol* 18:2089–2099.
- Landon EJ, Inagami T. 2005. Beyond the G protein: The saga of the type 2 angiotensin II receptor. *Arterioscler Thromb Vasc Biol* 25:15–16.
- Li JM, Mogi M, Tsukuda K, Tomochika H, Iwanami J, Min LJ, Nahmias C, Iwai M, Horiuchi M. 2007. Angiotensin II-induced neural differentiation via angiotensin II type 2 (AT₂) receptor-MMS2 cascade involving interaction between AT₂ receptor-interacting protein and Src homology 2 domain-containing protein-tyrosine phosphatase. *Mol Endocrinol* 21:499–511.
- López F, Estève JP, Buscaill L, Delesque N, Saint-Laurent N, Théveniau M, Nahmias C, Vaysse N, Susini C. 1997. The tyrosine phosphatase SHP-1 associates with the sst2 somatostatin receptor and is an essential component of sst2-mediated inhibitory growth signaling. *J Biol Chem* 272:24448–24454.
- Matsubara I, Shibasaki Y, Okigaki M, Mori Y, Masaki H, Kosaki A, Tsutsumi Y, Uchiyama Y, Fujiyama S, Nose A, Iba O, Tateishi E, Hasegawa T, Horiuchi M, Nahmias C, Iwasaka T. 2001. Effect of angiotensin II type 2 receptor on tyrosine kinase Pyk2 and c-Jun NH2-terminal kinase via SHP-1 tyrosine phosphatase activity: Evidence from vascular-targeted transgenic mice of AT₂ Receptor. *Biochem Biophys Res Commun* 282:1085–1091.
- Miura S, Karnik SS. 2000. Ligand-independent signals from angiotensin II type 2 receptor induce apoptosis. *EMBO J* 19:4026–4035.
- Miura S, Karnik SS, Saku K. 2005. Constitutively active homo-oligomeric angiotensin II type 2 receptor induces cell signaling independent of receptor conformation and ligand stimulation. *J Biol Chem* 280:18327–18344.
- Mukoyama M, Nakajima M, Horiuchi M, Sasamura H, Pratt RE, Dzau VJ. 1993. Expression cloning of type 2 angiotensin II receptor reveals a unique class of seven-transmembrane receptors. *J Biol Chem* 268:24539–24542.
- Murphy TJ, Alexander RW, Griending KK, Runge MS, Bernstein KE. 1991. Isolation of a cDNA encoding the vascular type-1 angiotensin II receptor. *Nature* 351:233–236.

Neel BG, Gu H, Pao L. 2003. The 'Shp'ing news: SH2 domain-containing tyrosine phosphatases in cell signaling. *Trends Biochem Sci* 28:284–293.

Nouet S, Amzallag N, Li JM, Louis S, Seitz I, Cui TX, Alleaume AM, Di Benedetto M, Boden C, Masson M, Strosberg AD, Horiuchi M, Couraud PO, Nahmias C. 2004. Trans-inactivation of receptor tyrosine kinases by novel angiotensin II AT₂ receptor-interacting protein, ATIP. *J Biol Chem* 279:28989–28997.

Roskoski R. 2004. Src protein-tyrosine kinase structure and regulation. *Biochem Biophys Res Commun* 324:1155–1164.

Sasaki K, Yamano Y, Bardhan S, Iwai N, Murray JJ, Hasegawa M, Matsuda Y, Inagami T. 1991. Cloning and expression of a complementary DNA encoding a bovine adrenal angiotensin II type-1 receptor. *Nature* 351:230–233.

Somani AK, Bignon JS, Mills GB, Siminovitch KA, Branch DR. 1997. Src kinase activity is regulated by the SHP-1 protein-tyrosine phosphatase. *J Biol Chem* 272:21113–21119.

Villarreal RS, Alvarez SE, Juri Ayub M, Ciuffo GM. 2006. Angiotensin II modulates Tyr-phosphorylation of IRS-4, an insulin receptor substrate, in rat liver membranes. *Mol Cell Biochem* 293:35–46.

Wu L, Iwai M, Li Z, Shiuchi T, Min L-J, Cui T-X, Li J-M, Okumura M, Nahmias C, Horiuchi M. 2004. Regulation of inhibitory protein- κ B and monocyte chemoattractant protein-1 by angiotensin II Type 2 receptor-activated Src homology protein tyrosine phosphatase-1 in fetal vascular smooth muscle cells. *Mol Endocrinol* 18:666–678.

Yin G, Yan C, Berk BC. 2003. Angiotensin II signaling pathways mediated by tyrosine kinases. *Int J Biochem Cell Biol* 35:780–783.

[Q1](#): Author: Please check the grant sponsors.

[Q2](#): Author: Please add in the reference list.

COLOR REPRODUCTION IN YOUR ARTICLE

These proofs have been typeset using figure files transmitted to production when this article was accepted for publication. Please review all figures and note your approval with your submitted proof corrections. You may contact the journal production team at JCBprod@wiley.com if you wish to discuss specific concerns.

Because of the high cost of color printing, we can only print figures in color if authors cover the expense. If you have submitted color figures, please indicate your consent to cover the cost on the table listed below by marking the box corresponding to the approved cost on the table. The rate for this journal is \$500 USD per printed page of color, regardless on the number of figures appearing on that page.

Please note, all color images will be reproduced online in Wiley *InterScience* at no charge, whether or not you opt for color printing.

You will be invoiced for color charges once the article has been published in print.

Failure to return this form with your article proofs may delay the publication of your article.

JOURNAL JOURNAL OF CELLULAR
BIOCHEMISTRY MS. NO. _____ NO. COLOR PAGES _____

MANUSCRIPT TITLE _____

AUTHOR(S) _____

No. Color Pages	Color Charge	No. Color Pages	Color Charge	No. Color Pages	Color Charge
<input type="checkbox"/> 1	\$500	<input type="checkbox"/> 5	\$2500	<input type="checkbox"/> 9	\$4500
<input type="checkbox"/> 2	\$1000	<input type="checkbox"/> 6	\$3000	<input type="checkbox"/> 10	\$5000
<input type="checkbox"/> 3	\$1500	<input type="checkbox"/> 7	\$3500	<input type="checkbox"/> 11	\$5500
<input type="checkbox"/> 4	\$2000	<input type="checkbox"/> 8	\$4000	<input type="checkbox"/> 12	\$6000
Contact JCBprod@wiley.com for a quote if you have more than 12 pages of color					

Please print my figures color

Please print my figures in black and white

Please print the following figures in color _____

and convert these figures to black and white _____

Approved by _____

Billing Address _____ E-mail _____

Telephone _____

Fax _____



REPRINT BILLING DEPARTMENT • 111 RIVER STREET, HOBOKEN, NJ 07030

FAX: (201) 748-7670

E-MAIL: reprints@wiley.com

PREPUBLICATION REPRINT ORDER FORM

Please complete this form even if you are not ordering reprints. This form **MUST** be returned with your corrected proofs and original manuscript. Your reprints will be shipped approximately 4 weeks after publication. Reprints ordered after printing will be substantially more expensive.

JOURNAL JOURNAL OF CELLULAR BIOCHEMISTRY (JCB) VOLUME _____ ISSUE _____
 TITLE OF MANUSCRIPT _____
 MS. NO. _____ NO. OF PAGES _____ AUTHOR(S) _____

No. of Pages	100 Reprints	200 Reprints	300 Reprints	400 Reprints	500 Reprints
	\$	\$	\$	\$	\$
1-4	336	501	694	890	1052
5-8	469	703	987	1251	1477
9-12	594	923	1234	1565	1850
13-16	714	1156	1527	1901	2273
17-20	794	1340	1775	2212	2648
21-24	911	1529	2031	2536	3037
25-28	1004	1707	2267	2828	3388
29-32	1108	1894	2515	3135	3755
33-36	1219	2092	2773	3456	4143
37-40	1329	2290	3033	3776	4528

**REPRINTS ARE ONLY AVAILABLE IN LOTS OF 100. IF YOU WISH TO ORDER MORE THAN 500 REPRINTS, PLEASE CONTACT OUR REPRINTS DEPARTMENT AT (201) 748-5971 FOR A PRICE QUOTE.

Please send me _____ reprints of the above article at \$ _____

Please add appropriate State and Local Tax (Tax Exempt No. _____) \$ _____

for United States orders only. Please add 5% Postage and Handling \$ _____

TOTAL AMOUNT OF ORDER** \$ _____

**International orders must be paid in currency and drawn on a U.S. bank

Please check one: Check enclosed Bill me Credit Card
 If credit card order, charge to: American Express Visa MasterCard

Credit Card No. _____ Signature _____ Exp. Date _____

BILL TO: Name _____ **SHIP TO:** (Please, no P.O. Box numbers) Name _____
 Institution _____ Institution _____
 Address _____ Address _____
 Purchase Order No. _____ Phone _____ Fax _____
 E-mail _____



COPYRIGHT TRANSFER AGREEMENT

Date:

Production/Contribution

To:

ID# _____

Publisher/Editorial office use only

Re: JCB-____-____ (manuscript number assigned by editorial office)

Manuscript entitled: _____

_____ (the "Contribution")

for publication in _____ (the "Journal")

published by Wiley-Liss, Inc., a subsidiary of John Wiley & Sons, Inc. ("Wiley").

Dear Contributor(s):

Thank you for submitting your Contribution for publication. In order to expedite the publishing process and enable Wiley to disseminate your work to the fullest extent, we need to have this Copyright Transfer Agreement signed and returned to us as soon as possible. If the Contribution is not accepted for publication this Agreement shall be null and void.

A. COPYRIGHT

1. The Contributor assigns to Wiley, during the full term of copyright and any extensions or renewals of that term, all copyright in and to the Contribution, including but not limited to the right to publish, republish, transmit, sell, distribute and otherwise use the Contribution and the material contained therein in electronic and print editions of the Journal and in derivative works throughout the world, in all languages and in all media of expression now known or later developed, and to license or permit others to do so.
2. Reproduction, posting, transmission or other distribution or use of the Contribution or any material contained therein, in any medium as permitted hereunder, requires a citation to the Journal and an appropriate credit to Wiley as Publisher, suitable in form and content as follows: (Title of Article, Author, Journal Title and Volume/Issue Copyright © [year] Wiley-Liss, Inc. or copyright owner as specified in the Journal.)

B. RETAINED RIGHTS

Notwithstanding the above, the Contributor or, if applicable, the Contributor's Employer, retains all proprietary rights other than copyright, such as patent rights, in any process, procedure or article of manufacture described in the Contribution, and the right to make oral presentations of material from the Contribution.

C. OTHER RIGHTS OF CONTRIBUTOR

Wiley grants back to the Contributor the following:

1. The right to share with colleagues print or electronic "preprints" of the unpublished Contribution, in form and content as accepted by Wiley for publication in the Journal. Such preprints may be posted as electronic files on the Contributor's own website for personal or professional use, or on the Contributor's internal university or corporate networks/intranet, or secure external website at the Contributor's institution, but not for commercial sale or for any systematic external distribution by a third party (e.g., a listserve or database connected to a public access server). Prior to publication, the Contributor must include the following notice on the preprint: "This is a preprint of an article accepted for publication in [Journal title] © copyright (year) (copyright owner as specified in the Journal)". After publication of the Contribution by Wiley, the preprint notice should be amended to read as follows: "This is a preprint of an article published in [include the complete citation information for the final version of the Contribution as published in the print edition of the Journal]", and should provide an electronic link to the Journal's WWW site, located at the following Wiley URL: <http://www.interscience.Wiley.com/>. The Contributor agrees not to update the preprint or replace it with the published version of the Contribution.

2. The right, without charge, to photocopy or to transmit online or to download, print out and distribute to a colleague a copy of the published Contribution in whole or in part, for the Contributor's personal or professional use, for the advancement of scholarly or scientific research or study, or for corporate informational purposes in accordance with Paragraph D.2 below.
3. The right to republish, without charge, in print format, all or part of the material from the published Contribution in a book written or edited by the Contributor.
4. The right to use selected figures and tables, and selected text (up to 250 words, exclusive of the abstract) from the Contribution, for the Contributor's own teaching purposes, or for incorporation within another work by the Contributor that is made part of an edited work published (in print or electronic format) by a third party, or for presentation in electronic format on an internal computer network or external website of the Contributor or the Contributor's employer.
5. The right to include the Contribution in a compilation for classroom use (course packs) to be distributed to students at the Contributor's institution free of charge or to be stored in electronic format in datarooms for access by students at the Contributor's institution as part of their course work (sometimes called "electronic reserve rooms") and for in-house training programs at the Contributor's employer.

D. CONTRIBUTIONS OWNED BY EMPLOYER

1. If the Contribution was written by the Contributor in the course of the Contributor's employment (as a "work-made-for-hire" in the course of employment), the Contribution is owned by the company/employer which must sign this Agreement (in addition to the Contributor's signature), in the space provided below. In such case, the company/employer hereby assigns to Wiley, during the full term of copyright, all copyright in and to the Contribution for the full term of copyright throughout the world as specified in paragraph A above.
2. In addition to the rights specified as retained in paragraph B above and the rights granted back to the Contributor pursuant to paragraph C above, Wiley hereby grants back, without charge, to such company/employer, its subsidiaries and divisions, the right to make copies of and distribute the published Contribution internally in print format or electronically on the Company's internal network. Upon payment of the Publisher's reprint fee, the institution may distribute (but not resell) print copies of the published Contribution externally. Although copies so made shall not be available for individual re-sale, they may be included by the company/employer as part of an information package included with software or other products offered for sale or license. Posting of the published Contribution by the institution on a public access website may only be done with Wiley's written permission, and payment of any applicable fee(s).

E. GOVERNMENT CONTRACTS

In the case of a Contribution prepared under U.S. Government contract or grant, the U.S. Government may reproduce, without charge, all or portions of the Contribution and may authorize others to do so, for official U.S. Government purposes only, if the U.S. Government contract or grant so requires. (U.S. Government Employees: see note at end).

F. COPYRIGHT NOTICE

The Contributor and the company/employer agree that any and all copies of the Contribution or any part thereof distributed or posted by them in print or electronic format as permitted herein will include the notice of copyright as stipulated in the Journal and a full citation to the Journal as published by Wiley.

G. CONTRIBUTOR'S REPRESENTATIONS

The Contributor represents that the Contribution is the Contributor's original work. If the Contribution was prepared jointly, the Contributor agrees to inform the co-Contributors of the terms of this Agreement and to obtain their signature to this Agreement or their written permission to sign on their behalf. The Contribution is submitted only to this Journal and has not been published before, except for "preprints" as permitted above. (If excerpts from copyrighted works owned by third parties are included, the Contributor will obtain written permission from the copyright owners for all uses as set forth in Wiley's permissions form or in the Journal's Instructions for Contributors, and show credit to the sources in the Contribution.) The Contributor also warrants that the Contribution contains no libelous or unlawful statements, does not infringe on the rights or privacy of others, or contain material or instructions that might cause harm or injury.

CHECK ONE:

Contributor-owned work

Contributor's signature

Date

Type or print name and title

Co-contributor's signature

Date

Type or print name and title

ATTACH ADDITIONAL SIGNATURE PAGE AS NECESSARY

Company/Institution-owned work
(made-for-hire in the
course of employment)

Company or Institution (Employer-for-Hire)

Date

Authorized signature of Employer

Date

U.S. Government work

Note to U.S. Government Employees

A Contribution prepared by a U.S. federal government employee as part of the employee's official duties, or which is an official U.S. Government publication is called a "U.S. Government work," and is in the public domain in the United States. In such case, the employee may cross out Paragraph A.1 but must sign and return this Agreement. If the Contribution was not prepared as part of the employee's duties or is not an official U.S. Government publication, it is not a U.S. Government work.

U.K. Government work (Crown Copyright)

Note to U.K. Government Employees

The rights in a Contribution prepared by an employee of a U.K. government department, agency or other Crown body as part of his/her official duties, or which is an official government publication, belong to the Crown. In such case, the Publisher will forward the relevant form to the Employee for signature.