

Research



Cite this article: Fernández MS, Vlachos E, Buono MR, Alzugaray L, Campos L, Sterli J, Herrera Y, Paolucci F. 2020 Fingers zipped up or baby mittens? Two main tetrapod strategies to return to the sea. *Biol. Lett.* **16**: 20200281. <http://dx.doi.org/10.1098/rsbl.2020.0281>

Received: 24 April 2020

Accepted: 8 July 2020

Subject Areas:

evolution, palaeontology, taxonomy and systematics

Keywords:

anatomical networks, marine reptiles, marine mammals, marine turtles, marine crocodiles, limb-to-fin transitions

Author for correspondence:

Evangelos Vlachos

e-mail: evlacho@mef.org.ar

Electronic supplementary material is available online at <https://doi.org/10.6084/m9.figshare.c.5081285>.

Palaeontology

Fingers zipped up or baby mittens? Two main tetrapod strategies to return to the sea

Marta S. Fernández¹, Evangelos Vlachos², Mónica R. Buono³, Lucia Alzugaray³, Lisandro Campos¹, Juliana Sterli², Yanina Herrera¹ and Florencia Paolucci¹

¹CONICET — División Paleontología Vertebrados, Museo de La Plata, Facultad de Ciencias Naturales y Museo, Universidad Nacional de La Plata, B1900AVW La Plata, Argentina

²CONICET — Museo Paleontológico Egidio Feruglio, Av. Fontana 140, 9100 Trelew, Chubut, Argentina

³Instituto Patagónico de Geología y Paleontología, CCT CONICET-CENPAT, Bvd. Brown 2915, U9120ACD Puerto Madryn, Chubut, Argentina

MSF, 0000-0001-6935-7575; **EV**, 0000-0002-1980-7109; **MRB**, 0000-0003-1812-7467; **LC**, 0000-0002-7201-8520; **JS**, 0000-0003-2942-5558; **YH**, 0000-0002-2020-1227; **FP**, 0000-0003-4466-7723

The application of network methodology in anatomical structures offers new insights on the connectivity pattern of skull bones, skeletal elements and their muscles. Anatomical networks helped to improve our understanding of the water-to-land transition and how the pectoral fins were transformed into limbs via their modular disintegration. Here, we apply the same methodology to tetrapods secondarily adapted to the marine environment. We find that these animals achieved their return to the sea with four types of morphological changes, which can be grouped into two different main strategies. In all marine mammals and the majority of the reptiles, the fin is formed by the persistence of superficial and interdigital connective tissues, like a 'baby mitten', whereas the underlying connectivity pattern of the bones does not influence the formation of the forefin. On the contrary, ichthyosaurs 'zipped up' their fingers and transformed their digits into carpal-like elements, forming a homogeneous and better-integrated forefin. These strategies led these vertebrates into three different macroevolutionary paths exploring the possible spectrum of morphological adaptations.

1. Background

Tetrapods are unique among major plant and metazoan clades in showing recurrent colonizations from land or freshwater to the marine realm [1]. The colonization of land happened once and nearly 400 Mya (Devonian). However, several terrestrial lineages colonized marine ecosystems in repeated occasions since the Early Triassic (250 Mya) [2]. Iconic examples include turtles, ichthyosaurs, mosasaurs, plesiosaurs, metriorhynchid crocodylomorphs during the Mesozoic, and mainly birds and mammals during the Cenozoic (penguins, whales, dolphins, sea lions, seals and sea cows). Owing to the aquatic physical environment, all of these animals, which are secondarily adapted to the marine environment (SECAD), exhibit strong modifications in their skeletons compared to the basic terrestrial tetrapod pattern. These modifications have been extensively cited as canonical examples of convergent evolution [2,3,4,5]. Although they are not closely related, all these groups share something in common: their ancestors had fingers. Previous studies have suggested that the limb-to-forefin (to better distinguish it from pectoral fins) transition in aquatic tetrapods occurred several times and followed diverse strategies [6–11]. However, did that morphological shift influence their anatomical integration? Is there a conserved modularity pattern among SECAD tetrapods? Or did land-to-water transition trigger an array of unique appendage connectivity patterns across lineages? To address these questions, we

Table 1. Network properties of analysed taxa. C, average clustering coefficient; D, density; E, edges; H, heterogeneity; N, nodes; P, parcellation; PL, average path length.

taxon	classification	age	N	E	D	C	PL	H	P
<i>Hupehsuchus</i>	Ichthyosauromorph	Early Triassic	37	49	0.074	0.230	5.041	0.446	0.873
<i>Nanchangosaurus</i>	Ichthyosauromorph	Early Triassic	56	76	0.049	0.160	6.097	0.495	0.884
<i>Petrolacosaurus</i>	Basal diapsid	Late Carboniferous	38	58	0.083	0.296	4.558	0.499	0.842
<i>Mixosaurus</i>	Basal ichthyosaur	Middle Triassic	78	171	0.057	0.425	5.861	0.362	0.804
<i>Ichthyosaurus</i>	Ichthyosaur	Early Jurassic	91	226	0.055	0.476	6.633	0.264	0.827
<i>Caypullisaurus</i>	Derived ichthyosaur	Late Jurassic	103	245	0.047	0.433	6.685	0.280	0.844
<i>Portunatasaurus</i>	Mosasauroid	Late Cretaceous	37	48	0.072	0.250	5.047	0.509	0.874
<i>Mosasaurus</i>	Mososaur	Late Cretaceous	62	72	0.038	0.116	9.685	0.418	0.864
<i>Styxosaurus</i>	Plesiosaur	Late Cretaceous	95	106	0.024	0.074	14.948	0.400	0.882
<i>Dermochelys</i>	marine turtle	extant	33	44	0.083	0.248	4.508	0.510	0.814
<i>Cricosaurus</i>	marine crocodylomorph	Late Jurassic	26	35	0.108	0.278	3.920	0.543	0.822
<i>Megadyptes</i>	penguin	extant	12	19	0.288	0.683	2.530	0.352	0.667
<i>Zalophus</i>	sea lion	extant	30	38	0.087	0.169	4.487	0.505	0.844
<i>Ommatophoca</i>	seal	extant	30	40	0.092	0.229	4.230	0.568	0.840
<i>Dugong</i>	Sirenid	extant	29	39	0.091	0.251	4.096	0.571	0.828
<i>Maiacetus</i>	Cetacean protocetid	Middle Eocene	32	45	0.091	0.210	4.375	0.552	0.840
<i>Dorudon</i>	Cetacean basilosaurid	Late Eocene	24	37	0.134	0.354	3.272	0.565	0.729
<i>Lagenorhynchus</i>	Cetacean odontocetes	extant	35	48	0.081	0.183	5.187	0.554	0.833
<i>Megaptera</i>	Cetacean mysticetes	extant	35	47	0.079	0.176	5.987	0.508	0.803

used anatomical network analysis, a novel framework that has been demonstrated as a powerful approach to analyse the organization of anatomical structures [12,13].

Recently, this approach helped in studying the connectivity patterns of the various bones of the tetrapodomorph limb, providing a new framework for understanding the water-to-land transition. This process was characterized by less integrated and more modular appendages that were accompanied by significant muscular diversification [14,15]. The appearance of digits caused a major transformation in the connectivity pattern of the tetrapodomorph appendage, from an 'ancestral' web-like morphology to a 'derived' tree-like network through a process called, appropriately, the 'disintegration' of the limb [14]. Here, we expand this framework to study the limb-to-forefin transformation in SECAD tetrapods, including a broad taxonomic sampling of extant and extinct marine reptiles and mammals.

2. Material and methods

(a) Sample analysed

We doubled the tetrapod dataset [15] by constructing networks of the forefins of 19 SECAD tetrapods (table 1). Data were selected based on the most complete published forefins and/or first-hand examinations, selecting the most representative morphotypes of each group, to have a comprehensive sample of variability. See electronic supplementary material, table S1 for details.

(b) Construction of networks and analyses

All anatomical connections between bony elements of the forefins were carefully defined manually, considering either bone-bone and/or bone-cartilage connections. These models

were digitalized in Gephi [16] and depicted with the Force Atlas 2 layout algorithm; see electronic supplementary material for adjacency matrices. Metrics were calculated with Gephi algorithms, excluding heterogeneity and parcellation that were calculated as in [15], but using the communities detected in Gephi; we followed Calatayud *et al.* [17] rationale to ensure the best community detection. The main descriptors used to analyse the networks are density (the number of connections that exist compared to the maximum number possible), heterogeneity (how the connections are distributed across the network), clustering (how well integrated the various elements are with their immediate surroundings) and parcellation (the degree of anatomical modularity of the network); see [15] for further information. Individual bones are coloured according to their betweenness centrality (how many times they are included in the shortest path between any pair of nodes), as a measure of their importance in the forefin. Principal component analysis (PCA) and PERMANOVA were performed in PAST [18].

3. Results

The anatomical network of the forelimb of a basic terrestrial tetrapod contains 6–7 modules. The digit modules form a tree-like appendage [14] that departs greatly from its 'ancestral' condition (e.g. coelacanth), which had fewer modules placed in a row, one distal to the other. Our analysis indicates that the transformation of a forelimb to a forefin in aquatic tetrapods that finally achieved pelagic lifestyle occurred, mainly, with four major morphological changes, in combinations (figure 1): increased number of connections, increased number of bones, loss of bones and fusion of bones. All SECAD taxa show, in comparison with their terrestrial tetrapod ancestor, an increased number of connections in the mesopodium, involving mainly a better integration of some of the metacarpals (usually the

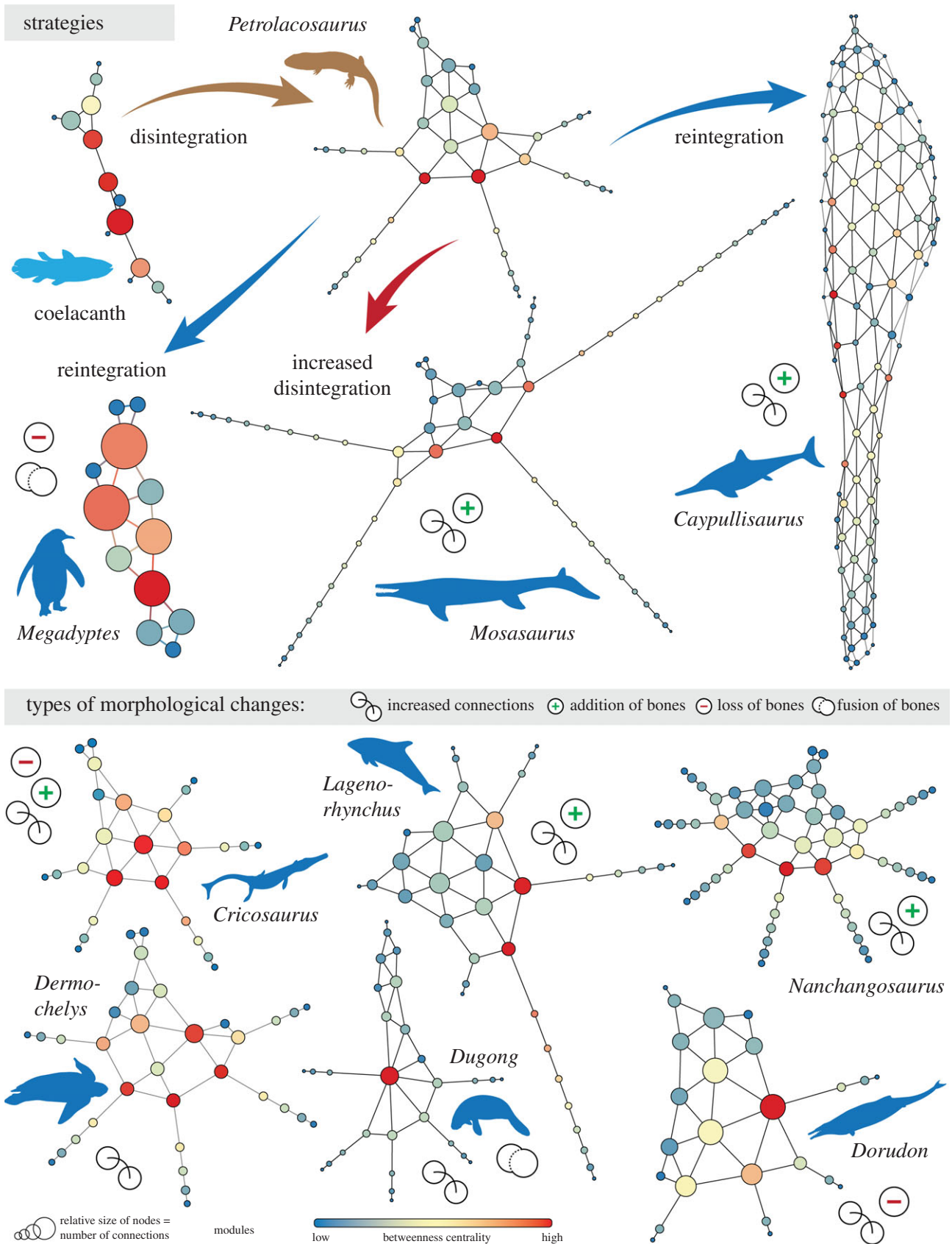


Figure 1. From fin to limb and back again. Anatomical networks showing the forelimb-to-forefin transition in SECAD tetrapods stemming from a basic tetrapod limb, highlighting the main types of morphological changes. See figure 2 for silhouette credits.

mid ones; figure 1). The addition of more connections and better integration are taken to the extreme in ichthyosaurs, where phalangeal elements are also connected anteroposteriorly. Several SECAD tetrapods show an increased number of bones, involving the addition of phalangeal elements (hyperphalangy)

that extend the previous smaller digit modules (mosasaurs, plesiosaurs, whales, dolphins, marine crocodiles), more digits (i.e. polydactyly as in *Nanchangosaurus*) or both more phalanges and/or more digits forming more integrated patterns (e.g. ichthyosaurs). Few show a reduction in the number of bones,

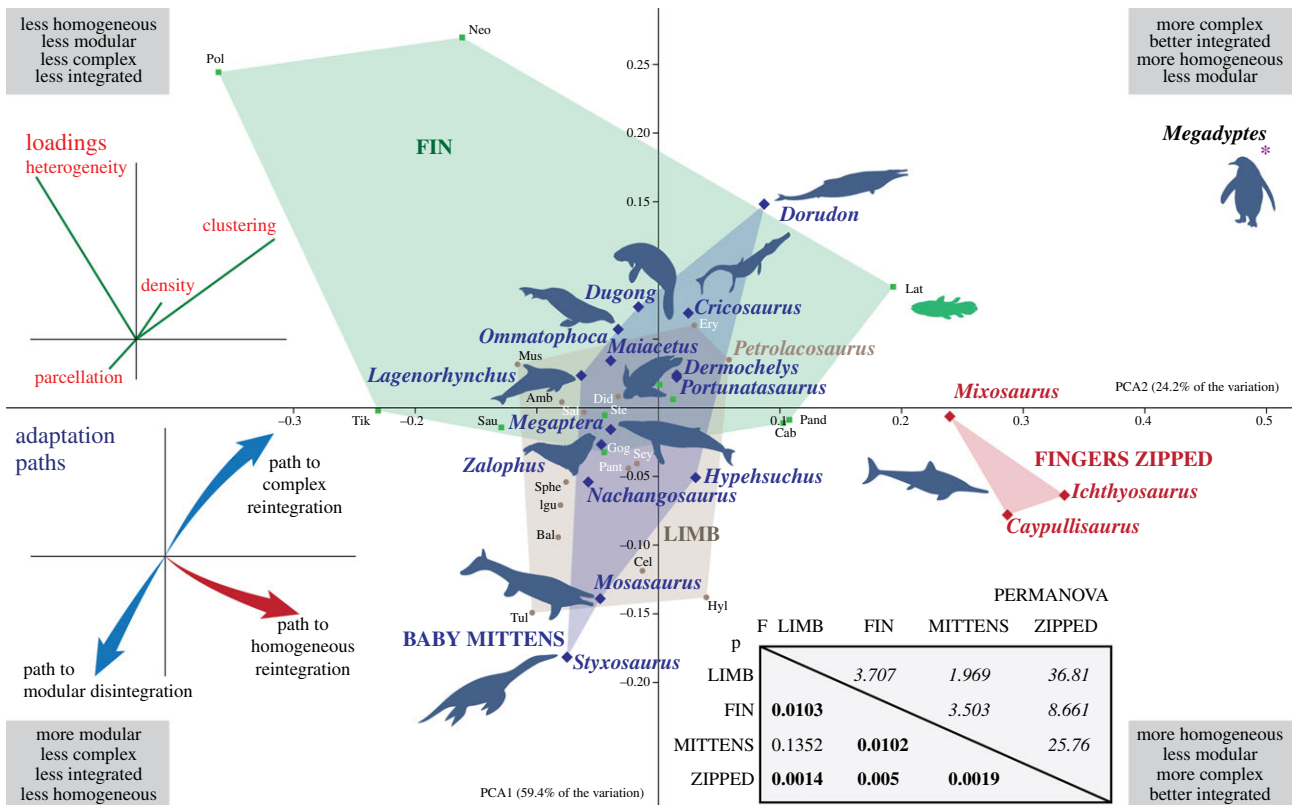


Figure 2. Principal component analysis (PCA) scatter diagram showing the position of each taxon in the morphospace defined by the first two PCs explaining 83.727% of the variation (PC1: 59.442%, PC2: 24.285%, PC3: 15.107%, PC4: 1.1651%), including a PERMANOVA analysis of the main groups (statistically significant $p < 0.05$ marked with bold). Abbreviations: Amb, *Ambystoma*; Bal, *Balanerpeton*; Cab, *Cabonichthys*; Cel, *Celtesdens*; Did, *Didelphis*; Ery, *Eryops*; Gog, *Gogonasus*; Hyl, *Hyllopleosion*; Igu, *Iguana*; Lat, *Latimeria*; Mus, *Mus*; Neo, *Neoceratodus*; Pand, *Panderichthys*; Pant, *Pantylus*; Pol, *Polypterus*; Sal, *Salamandra*; Sau, *Sauripterus*; Sey, *Seymouria*; Sph, *Sphenodon*; Ste, *Sterropterygion*; Tik, *Tiktaalik*; Tul, *Tulerpeton*. Silhouettes are downloaded from phylopic.org and attributed to: Y. Wong (coelacanth), D. Bogdanov (tetrapod), S. Hartman (ichthyosaur), I. Reid (mosasaur), N. Tamura (plesiosaur), G. Monger (marine crocodile), S. Tracer (sirenian), C. Huh (dolphin, whale), M. Keesey (basilosaurid), J. R. Spotila and R. Chatterji (turtle), Jakovche (seal), S. Traver (sea lion, penguin).

either in the mesopodium (marine crocodiles), in the digits (basilosaurids; must be corroborated with additional complete specimens), or by fusion (sirenids). These changes can be grouped into two main strategies. On one hand, mosasaurs, plesiosaurs, marine crocodiles, turtles, mammals and basal ichthyosauromorphs conserved the ancestral tree-like appendage morphology. Ichthyosaurs, on the other hand, followed a different strategy of reintegrating their digits into a fin. The case of penguins is special, because their highly modified appendages represent their ancestral condition of having wings, with mainly extreme loss and bone fusion (as a result of strong phylogenetic and functional constraints).

PCA (figure 2) depicts the variance across anatomical networks using four important descriptors: density, clustering, heterogeneity and parcellation. This allows SECAD tetrapods to be placed in the context of the known morphospace of tetrapodomorphs and tetrapods. The first two PCs explain 83.6% of the variation. Mysticetes, sea lions and sea turtles have forefins slightly more modular and homogeneous than terrestrial tetrapods and are placed closer to the region of the morphospace occupied mainly by terrestrial tetrapods with limbs (figure 2, brown area). This is expected for sea lions and marine turtles as they spend some time on the shore and their forefins are functional on land to support the trunk or shell, thus conserving the ancestral function of tetrapods. In the case of mysticetes, humpback whales display the longest forefin among cetaceans and increased modularity that is compensated by the loss of a digit; this

allows the network to maintain its complexity and integration. Seals and sirenids are heterogeneous enough and just slightly more complex than their terrestrial tetrapod ancestor to enter in the region occupied by tetrapods with fins (figure 2, green area). Seals differentiate from sea lions in that on land they do not use their forefins as weight-bearing appendages, which might explain their displacement within the morphospace of tetrapods without tree-like appendages. Basal forms of other lineages with pelagic derived members, such as *Hupehsuchus*, *Nanchangosaurus* and *Portunatasaurus*, are also placed within the known LIMB morphospace, consistent with the terrestrial-like forefin topology that most of these taxa had. However, several SECAD tetrapods show some more extreme changes, following three different adaptation paths that are discussed in the following section.

PERMANOVA analysis (figure 2, inset) confirms the statistically significant difference between the fins and limbs reported previously [15]. The forefins of SECAD tetrapods that conserve the tree-like appendage (blue in figure 2) are not significantly different from the limbs of terrestrial tetrapods, whereas those that reintegrated their limbs (ichthyosaurs, red in figure 2) are significantly different from all other groups.

4. Discussion

The back-to-the-sea tetrapod transition resulted in dramatic changes in limb morphology, including the retention of the

soft-tissue envelope enclosing the limb skeleton and lengthening of the distal region by the addition of bony elements, all strongly connected to early developmental stages of these animals. Resulting fin-shaped limbs can be functionally propulsive or swimming control surfaces [11]. As in the case of water-to-land transition, these morphological changes also impact the topological organization of the forefin, and anatomical networks help in recognizing these modifications in the underlying patterns of connectivity. These abstract network models could help in formulating several developmental or biomechanical hypotheses [14,15]. In our case, networks indicate that the shift from limb to forefin was also coupled with a deep modification in the anatomical integration of their forelimbs. From a tree-like network of their terrestrial ancestors, the transition to an aquatic and/or pelagic lifestyle triggered an array of connectivity patterns that could be summarized in three main adaptation paths (figure 2), as follows.

(a) Path to modular disintegration

Mosasaurus and plesiosaurs place new limits in the disintegration of the limb, a process that previously started with the conquest of the land [14]. By adding numerous new phalanges on their digits, they increase the modularity of their forefins, while reducing their density and integration.

(b) Path to complex reintegration

Marine crocodiles and, possibly, basilosaurids change their ancestral networks by losing elements and by increasing connections of the metapodials, which results in increased density (primarily) and better integration of their bones (secondarily). The extreme end to this path is the heavily reduced limb-fin of the penguin, which is also accompanied by fusion of elements.

(c) Path to homogeneous reintegration

The most impressive changes are noted in the forefins of ichthyosaurs. Although they share with other marine reptiles the addition of numerous phalangeal elements, ichthyosaurs abandoned the tree-like appendage for a new, web-like, structure. Ichthyosaurs reintegrated their digits into the mesopodium with the addition of anterior and posterior contacts and articulations. Hence, the metacarpals and the numerous phalanges of the ichthyosaurs radically adopt the connectivity pattern of carpal bones (increased clustering, betweenness centrality and degree)—this is mesopodalization [9,10,19] in network terms. These forefins are highly integrated and homogeneous, as nearly all elements are well connected to their surroundings with a similar number of connections. But at the same time, this strategy allowed ichthyosaurs to have forefins that did not lose much of their modularity.

5. Concluding remarks

The majority of the SECAD tetrapods present changes in terms of bone connectivity that include mainly the addition of a variable number of phalanges in most digits, some moderate increase in the integration of the metacarpal bones, or some minor reductions (by loss or fusion of elements). In all these cases, the limb-into-forefin transformation was actually achieved by the persistence of interdigital soft-tissue and by enclosing the limb in a broad soft-tissue envelope, which provided its form and made it functional. The underlying connectivity pattern does not influence greatly the form of the fin. This strategy is like wearing 'baby mittens': fingers might be able to move inside the mittens but they no longer function as separate modules. With their 'baby mittens', these tetrapods managed to explore regions outside the known morphospace of other tetrapods, attempting higher disintegration (mosasaurs and plesiosaurs) of the limb or some moderate reintegration (basilosaurs)—but without losing their digits. In the meantime, ichthyosaurs followed a different strategy and 'zipped up' their fingers, showing a costly reintegration of their limb to a modular pattern that is analogous to fishes, with the addition of interdigital bony elements and lateral connections.

Anatomical networks help understanding that all these secondary adaptations to the marine environment are not the same, and to speculate that they are the result of different developmental mechanisms, but also physical, phylogenetic and morphological constraints. Most of these tetrapods underwent less drastic changes and are groups that still survive today (mammals, turtles and crocodiles), while other, now-extinct, groups (like plesiosaurs, mosasaurs and ichthyosaurs) approached and even exceeded the limits of the potential morphological changes. Further work and detailed element- and clade-specific network analyses will allow associating this underlying bone connectivity and the functionality of these forefins.

Data accessibility. All necessary data to replicate the networks analysed herein are provided in the electronic supplementary material, in the form of adjacency matrices. Additional information on how to replicate other analyses and additional information is given in the pdf supplementary file.

Authors' contributions. E.V., M.S.F. and M.R.B. conceived, designed the study and wrote the first draft. M.S.F., L.C. and Y.H. conceived the network models of ichthyosauromorphs, ichthyosaurs, marine crocodiles, mosasaurs, plesiosaurs, M.R.B., L.A. and F.P. those of marine mammals and penguin, and J.S. that of the marine turtle. E.V. created and analysed the networks and designed the figures. All authors contributed to and approved the final version of the manuscript.

Competing interests. We declare we have no competing interests.

Funding. M.S.F. received funds from ANPCyT-PICT-2016-1039 and UNLP-N853, and M.R.B. from ANPCyT-PICT-2015-0792.

Acknowledgements. We would like to thank the Editorial Board, B. Esteve-Altava, J. Calatayud and E. Maxwell for valuable comments that improved this manuscript. We thank E. Crespo and N. Garcia (CESIMAR, CCT CONICET-CENPAT) for access to the collection of odontocetes' flippers.

References

1. Vermeij GJ, Dudley RO. 2000 Why are there so few evolutionary transitions between aquatic and terrestrial ecosystems? *Biol. J. Linn. Soc.* **70**, 541–554. (doi:10.1111/j.1095-8312.2000.tb00216.x)
2. Vermeij GJ, Motani R. 2018 Land to sea transitions in vertebrates: the dynamics of colonization. *Paleobiology* **44**, 237–250. (doi:10.1017/pab.2017.37)
3. Pyenson ND, Kelley NP, Parham JF. 2014 Marine tetrapod macroevolution: physical and biological
4. Kelley NP, Motani R. 2015 Trophic convergence drives morphological convergence in marine

drivers on 250 Ma of invasions and evolution in ocean ecosystems. *Palaeogeogr. Palaeoclimatol. Palaeoecol.* **400**, 1–8. (doi:10.1016/j.palaeo.2014.02.018)

- tetrapods. *Biol. Lett.* **11**, 20140709. (doi:10.1098/rsbl.2014.0709)
5. Kelley NP, Pyenson ND. 2015 Evolutionary innovation and ecology in marine tetrapods from the Triassic to the Anthropocene. *Science* **348**, aaa3716. (doi:10.1126/science.aaa3716)
 6. Caldwell MW. 1997 Modified perichondral ossification and the evolution of paddle-like limbs in ichthyosaurs and plesiosaurs. *J. Vertebr. Paleontol.* **17**, 534–547. (doi:10.1080/02724634.1997.10011000)
 7. Caldwell MW. 1997 Limb osteology and ossification patterns in *Cryptoclidus* (Reptilia: Plesiosauroidea) with a review of sauropterygian limbs. *J. Vertebr. Paleontol.* **17**, 295–307. (doi:10.1080/02724634.1997.10010976)
 8. Caldwell MW. 2002 From fins to limbs to fins: limb evolution in fossil marine reptiles. *Am. J. Med. Genet.* **112**, 236–249. (doi:10.1002/ajmg.10773)
 9. Maxwell EE. 2012 Unraveling the influences of soft tissue flipper development on skeletal variation using an extinct taxon. *J. Exp. Zool. A Comp. Exp. Biol.* **318**, 545–554. (doi:10.1002/jez.b.22459)
 10. Fedak TJ, Hall BK. 2004 Perspectives on hyperphalangy: patterns and processes. *J. Anat.* **204**, 151–163. (doi:10.1111/j.0021-8782.2004.00278.x)
 11. DeBlois MC, Motani R. 2019 Flipper bone distribution reveals flexible trailing edge in underwater flying marine tetrapods. *J. Morphol.* **280**, 908–924. (doi:10.1002/jmor.20992)
 12. Esteve-Altava B, Marugán-Lobón J, Botella H, Rasskin-Gutman D. 2011 Network models in anatomical systems. *J. Anthropol. Sci.* **89**, 175–184.
 13. Rasskin-Gutman D, Esteve-Altava B. 2014 Connecting the dots: anatomical network analysis in morphological EvoDevo. *Biol. Theory.* **9**, 178–193. (doi:10.1007/s13752-014-0175-x)
 14. Esteve-Altava B, Molnar JL, Johnston P, Hutchinson JR, Diogo R. 2018 Anatomical network analysis of the musculoskeletal system reveals integration loss and parcellation boost during the fins-to-limbs transition. *Evolution* **72**, 601–618. (doi:10.1111/evo.13430)
 15. Esteve-Altava B, Pierce SE, Molnar JL, Johnston P, Diogo R, Hutchinson JR. 2019 Evolutionary parallelisms of pectoral and pelvic network-anatomy from fins to limbs. *Sci. Adv.* **5**, eaau7459. (doi:10.1126/sciadv.aau7459)
 16. Bastian M, Heymann S, Jacomy M. 2009 Gephi: an open source software for exploring and manipulating networks. In *International AAAI Conference on Weblogs and Social Media, Paris*. (doi:10.13140/2.1.1341.1520)
 17. Calatayud J, Bernardo-Madrid R, Neuman M, Rojas A, Rosvall M. 2019 Exploring the solution landscape enables more reliable network community detection. *Phys. Rev. E.* **100**, 052308. (doi:10.1103/PhysRevE.100.052308)
 18. Hammer Ø, Harper DA, Ryan PD. 2001 PAST-palaeontological statistics, ver. 1.89. *Palaeontol. Electronica.* **4**, 1–9.
 19. Wagner GP, Chiu CH. 2001 The tetrapod limb: a hypothesis on its origin. *J. Exp. Zool.* **291**, 226–240. (doi:10.1002/jez.1100)