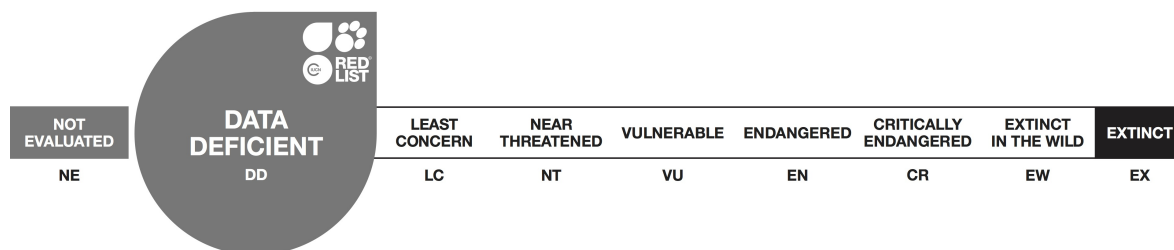


Atractus bocki, Bock's Ground Snake

Assessment by: Aguayo, R. *et al.*



View on www.iucnredlist.org

Short citation: Aguayo, R. *et al.* 2017. *Atractus bocki*. *The IUCN Red List of Threatened Species 2017*: e.T56039334A56039339. <http://dx.doi.org/10.2305/IUCN.UK.2017-2.RLTS.T56039334A56039339.en> [see full citation at end]

Copyright: © 2017 International Union for Conservation of Nature and Natural Resources

Reproduction of this publication for educational or other non-commercial purposes is authorized without prior written permission from the copyright holder provided the source is fully acknowledged.

Reproduction of this publication for resale, reposting or other commercial purposes is prohibited without prior written permission from the copyright holder. For further details see [Terms of Use](#).

The IUCN Red List of Threatened Species™ is produced and managed by the [IUCN Global Species Programme](#), the [IUCN Species Survival Commission \(SSC\)](#) and [The IUCN Red List Partnership](#). The IUCN Red List Partners are: [Arizona State University](#); [BirdLife International](#); [Botanic Gardens Conservation International](#); [Conservation International](#); [NatureServe](#); [Royal Botanic Gardens, Kew](#); [Sapienza University of Rome](#); [Texas A&M University](#); and [Zoological Society of London](#).

If you see any errors or have any questions or suggestions on what is shown in this document, please provide us with [feedback](#) so that we can correct or extend the information provided.

Taxonomy

Kingdom	Phylum	Class	Order	Family
Animalia	Chordata	Reptilia	Squamata	Dipsadidae

Taxon Name: *Atractus bocki* Werner, 1909

Common Name(s):

- English: Bock's Ground Snake

Assessment Information

Red List Category & Criteria: Data Deficient [ver 3.1](#)

Year Published: 2017

Date Assessed: November 12, 2014

Justification:

Listed as Data Deficient on the basis that, while it is inferred to have a very wide extent of occurrence (~130,000 km²) based on widely-separated records, most of which were taken a more than a century ago, it is a rarely-encountered snake whose true distribution, exposure and sensitivity to threats are unknown. Known pressures around existing localities may therefore be either major threats or localized, and an appropriate Red List assessment category cannot confidently be assigned as a result.

Geographic Range

Range Description:

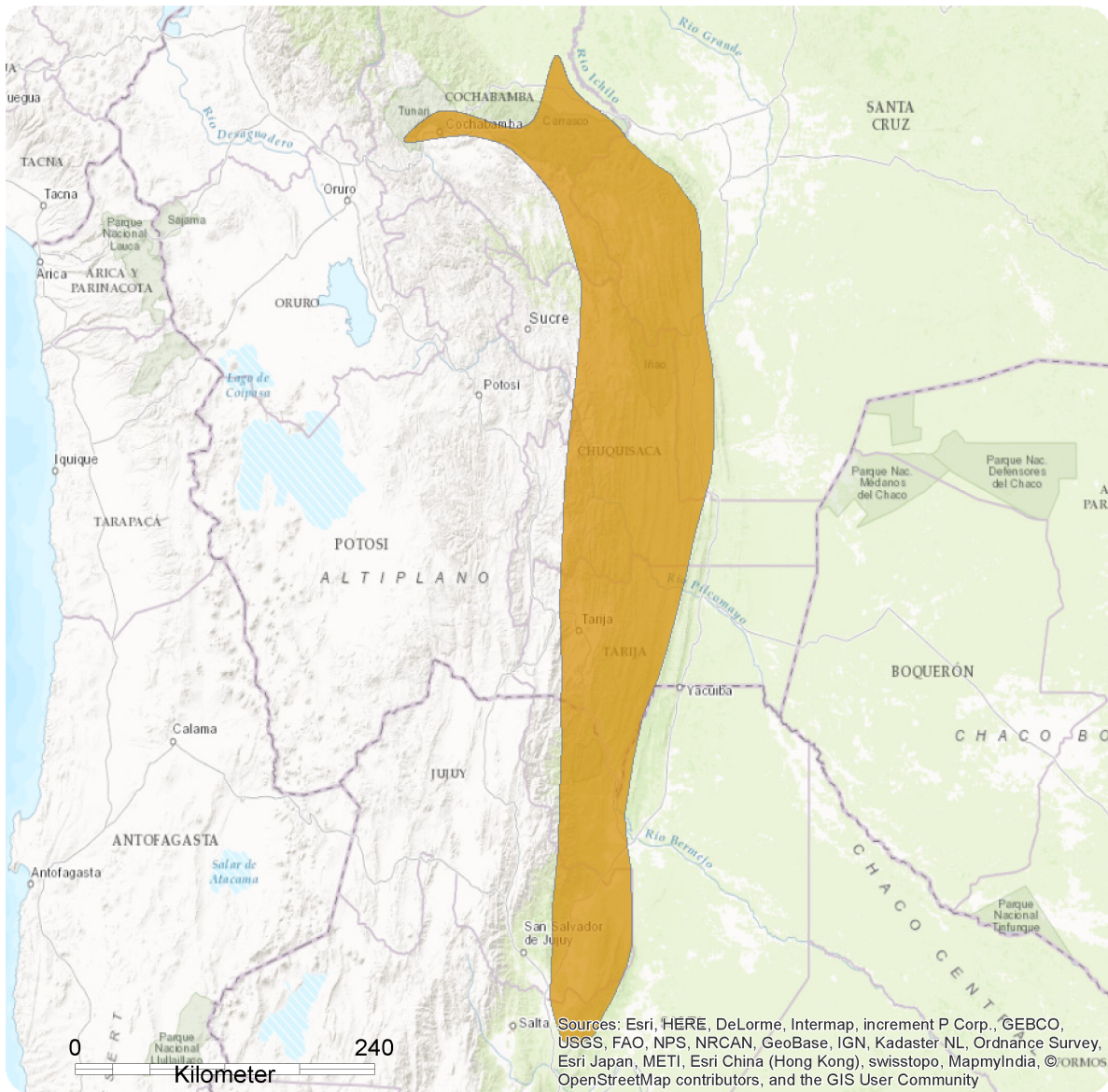
This species occurs in central-western South America, from central Bolivia to northwestern Argentina, at elevations of 350-2,000 m (Passos *et al.* 2009). Within this area, there are, however, very few records and the wide range shown in the accompanying map is inferred from widely-separated localities.

Country Occurrence:

Native: Argentina (Jujuy, Salta); Bolivia, Plurinational States of

Distribution Map

Atractus bocki

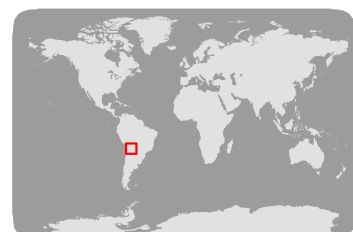


Range

Extant (resident)

Compiled by:

Sarah Hanson, Hedges Lab; Centro de Analisis Espacial, Universidad Mayor de San Andres, Bolivia



The boundaries and names shown and the designations used on this map do not imply any official endorsement, acceptance or opinion by IUCN.



Population

This species is rarely seen, possibly due to its fossorial habits. This species went unobserved by herpetologists from 1909 until 2008. It appears not to have been recorded since (A. Giraudo pers. comm. 2016). Because the species occurs in a variety of remote habitats and in national parks, the population may be stable, but data is too limited to state this with any confidence.

Current Population Trend: Unknown

Habitat and Ecology (see Appendix for additional information)

This species occurs in lowland rain forest, montane humid forest, and Inter-Andean dry forest. The species is fossorial and has been observed to be active at night (A. Muñoz pers. comm. 2014). It persists in secondary forests but not agricultural areas.

Systems: Terrestrial

Use and Trade

This species is not utilized or traded.

Threats (see Appendix for additional information)

Threats include habitat destruction caused by urban expansion and agricultural activities (crops and grazing). While the species appears to have a wide range, it is possible that it is localized within this area and it is not presently possible to determine whether the species is widely threatened and at risk of extinction, or whether these represent only local impacts on a wide-ranging snake.

Conservation Actions (see Appendix for additional information)

There are no species-specific conservation measures in place for this species. The species occurs near the boundary of Amboró and Tunari National Parks in Bolivia, and in Calilegua National Park in Argentina. More surveys are needed to better understand the distribution and abundance of this species.

It is classified as Insufficiently Known in Argentina (Giraudo *et al.* 2012).

Credits

Assessor(s): Aguayo, R., Aparicio, J., Arzamendia, V., Embert, D., Fitzgerald, L., Giraudo, A., Gonzales, L., Kacolis, F., Montero, R., Muñoz, A., Pelegrin, N., Scrocchi, G. & Williams, J.

Reviewer(s): Bowles, P.

Contributor(s): Hanson, S.

Facilitator(s) and Compiler(s): NatureServe

Bibliography

Giraud, A.R., Arzamendia, V., Bellini, G.P., Bessa, C.A., Calamante, C.C., Cardozo, G., Chiaraviglio, M., Costanzo, M.B., Etchepare, E.G., Di Cola, V., Di Pietro, D., Kretzschmar, S., Palomas, S., Nenda, S.J., Rivera, P.C., Rodríguez, M.E., Scrocchi, G.J. and Williams, J. D. 2012. Categorización del estado de conservación de las serpientes de la República Argentina. *Cuadernos de Herpetología* 26(3): 303-326.

IUCN. 2017. The IUCN Red List of Threatened Species. Version 2017-2. Available at: www.iucnredlist.org. (Accessed: 14 September 2017).

Ministerio de Medio Ambiente y Agua. 2009. *Libro rojo de la fauna silvestre de vertebrados de Bolivia*. Ministerio de Medio Ambiente y Agua, La Paz, Bolivia.

Passos, P., Aguayo, R. and Scrocchi, G. 2009. Rediscovery of the rare *Atractus bocki*, with assessment of the taxonomic status of *Atractus canedii* (Serpentes, Colubridae, Dipsadinae). *Journal of Herpetology* 43(4): 710-715.

Citation

Aguayo, R., Aparicio, J., Arzamendia, V., Embert, D., Fitzgerald, L., Giraud, A., Gonzales, L., Kacoliris, F., Montero, R., Muñoz, A., Pelegrin, N., Scrocchi, G. & Williams, J. 2017. *Atractus bocki*. *The IUCN Red List of Threatened Species 2017*: e.T56039334A56039339. <http://dx.doi.org/10.2305/IUCN.UK.2017-2.RLTS.T56039334A56039339.en>

Disclaimer

To make use of this information, please check the [Terms of Use](#).

External Resources

For [Images and External Links to Additional Information](#), please see the [Red List website](#).

Appendix

Habitats

(<http://www.iucnredlist.org/technical-documents/classification-schemes>)

Habitat	Season	Suitability	Major Importance?
1. Forest -> 1.5. Forest - Subtropical/Tropical Dry	Resident	Suitable	-
1. Forest -> 1.6. Forest - Subtropical/Tropical Moist Lowland	Resident	Suitable	-
1. Forest -> 1.9. Forest - Subtropical/Tropical Moist Montane	Resident	Suitable	-

Threats

(<http://www.iucnredlist.org/technical-documents/classification-schemes>)

Threat	Timing	Scope	Severity	Impact Score
1. Residential & commercial development -> 1.1. Housing & urban areas	Ongoing	Unknown	Unknown	Unknown
	Stresses:	1. Ecosystem stresses -> 1.1. Ecosystem conversion		
2. Agriculture & aquaculture -> 2.1. Annual & perennial non-timber crops -> 2.1.2. Small-holder farming	Ongoing	Unknown	Unknown	Unknown
	Stresses:	1. Ecosystem stresses -> 1.1. Ecosystem conversion		
2. Agriculture & aquaculture -> 2.3. Livestock farming & ranching -> 2.3.2. Small-holder grazing, ranching or farming	Ongoing	Unknown	Unknown	Unknown
	Stresses:	1. Ecosystem stresses -> 1.1. Ecosystem conversion 1. Ecosystem stresses -> 1.2. Ecosystem degradation		

Conservation Actions in Place

(<http://www.iucnredlist.org/technical-documents/classification-schemes>)

Conservation Actions in Place
In-Place Land/Water Protection and Management
Occur in at least one PA: Yes

Research Needed

(<http://www.iucnredlist.org/technical-documents/classification-schemes>)

Research Needed
1. Research -> 1.2. Population size, distribution & trends

Additional Data Fields

Distribution
Estimated extent of occurrence (EOO) (km ²): 131800
Continuing decline in extent of occurrence (EOO): No
Extreme fluctuations in extent of occurrence (EOO): No
Lower elevation limit (m): 350
Upper elevation limit (m): 2000
Habitats and Ecology
Continuing decline in area, extent and/or quality of habitat: No

The IUCN Red List Partnership



The IUCN Red List of Threatened Species™ is produced and managed by the [IUCN Global Species Programme](#), the [IUCN Species Survival Commission \(SSC\)](#) and [The IUCN Red List Partnership](#).

The IUCN Red List Partners are: [Arizona State University](#); [BirdLife International](#); [Botanic Gardens Conservation International](#); [Conservation International](#); [NatureServe](#); [Royal Botanic Gardens, Kew](#); [Sapienza University of Rome](#); [Texas A&M University](#); and [Zoological Society of London](#).