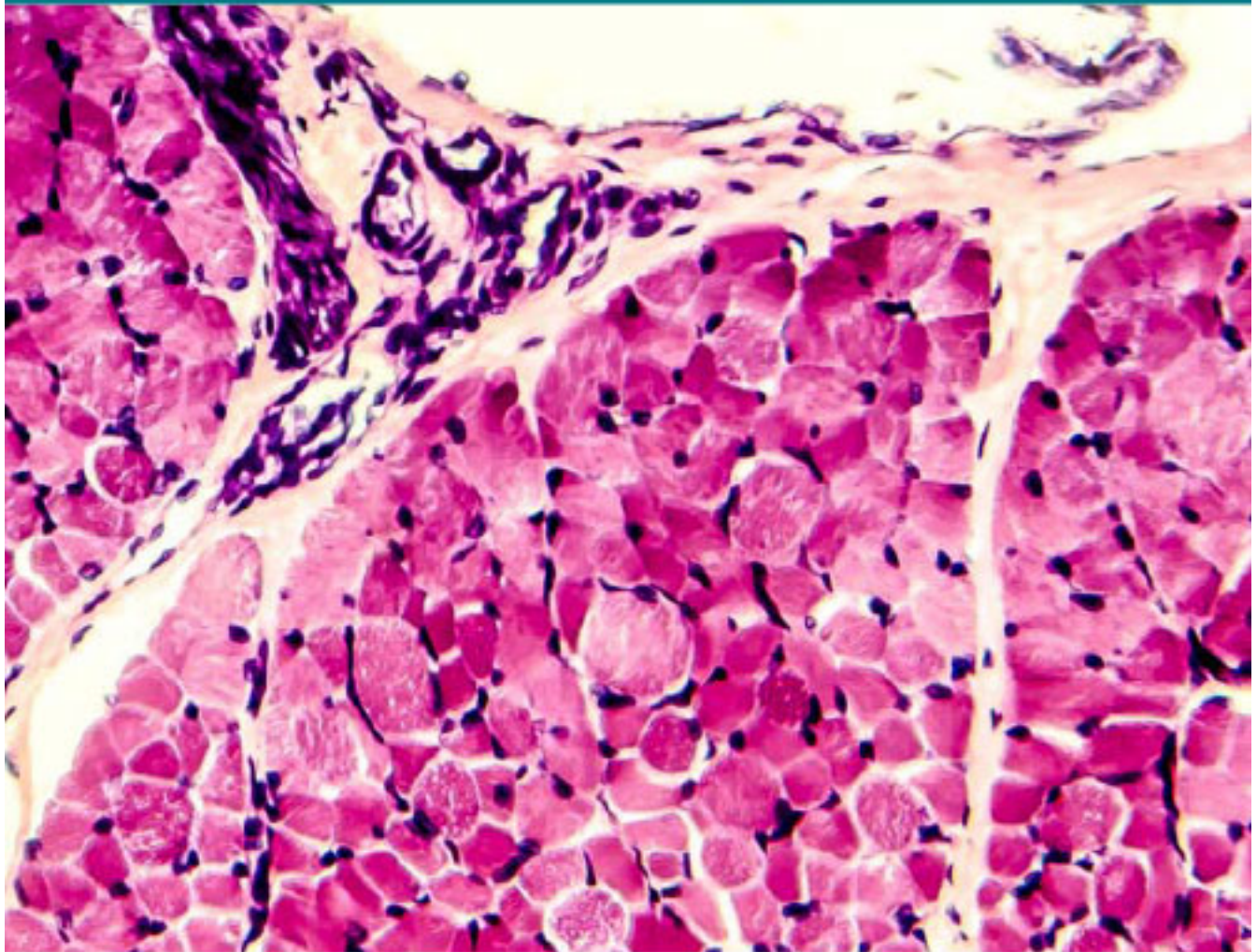


# Physiological Mini Reviews

**15**  
Volume



**Vol. 15**, March - April, 2022  
ISSN 1669-5410 (Online)  
[pmr.safsiol.org.ar](http://pmr.safsiol.org.ar)



 **SAFIS**  
Sociedad Argentina de Fisiología



**Physiological Mini Reviews is the official journal of the Asociación Latinoamericana de Ciencias Fisiológicas, (ALACF), which is constituted by the following Societies:**

Sociedad Argentina de Fisiología (SAFIS)

Sociedad Brasileira de Fisiología (SBFis)

Asociación Colombiana de Fisiología (COLFISIS)

Sociedad Cubana de Ciencias Fisiológicas (SOCCF)

Sociedad Chilena de Ciencias Fisiológicas (SCHCF)

Sociedad de Fisiología de Haití (SHF)

Sociedad Mexicana de Ciencias Fisiológicas (SMCF)

Sociedad Peruana de Ciencias Fisiológicas (SCPCF)

Sección de Fisiología de la Sociedad Uruguaya de Biociencias (SUB)

## SPONSORS

We are very grateful to our sponsors

**DEPARTAMENTO DE POSTGRADO**  
FACULTAD DE CIENCIAS MÉDICAS UNLP

# maestría

## EN INVESTIGACIÓN BIOMÉDICA

Acreditada y Categorizada CONEAU "C" Res. FC 2018-42  
Resolución Ministerial de Reconocimiento oficial y  
validez nacional del título: Res.1596/16

INSCRIPCIONES  
ABIERTAS

**INFORMES: [maestriaibunlp@gmail.com](mailto:maestriaibunlp@gmail.com)**

FACULTAD DE  
CIENCIAS MÉDICAS



LENF-MEDICINA DEL SUEÑO

[www.institutomedicoplatense.com.ar](http://www.institutomedicoplatense.com.ar)

**Laboratorio de Electrofisiología y Medicina del Sueño.  
Instituto Médico Platense. La Plata, Argentina  
[lenf.imp@gmail.com](mailto:lenf.imp@gmail.com)**

## SPONSORS

We are very grateful to our sponsors



intemun<sup>s.a</sup>

DIVISION INSUMOS

Ventas de Insumos Médicos Hospitalarios

La Plata - Buenos Aires - Argentina

Tel: 0221 471 8951 011-75120306 0221-586 9111

ventas@intemun.com.ar administracion@intemun.com.ar

Distribuidor oficial : *Baño Fácil*



**INBIO**

HIGHWAY

[www.inbiohw.com.ar](http://www.inbiohw.com.ar)



# Physiological Mini-Reviews

[ISSN 1669-5410 (Online)]

Edited by the **Argentinean Physiological Society and the Latin American Association of Physiological Sciences**

Journal address: Centro de Investigaciones Cardiovasculares y Cátedra de Fisiología y Física Biológica.

Facultad de Ciencias Médicas; Universidad Nacional de La Plata;

La Plata, Buenos Aires, Argentina. Tel.-Fax: +54-211-4834833

<http://pmr.safisiol.org.ar>

---

Physiological Mini-Reviews is a scientific journal, publishing brief reviews on "hot" topics in Physiology. The scope is quite broad, going from "Molecular Physiology" to "Integrated Physiological Systems". As indicated by our title it is not our intention to publish exhaustive and complete reviews. We ask to the authors concise and updated descriptions of the "state of the art" in a specific topic. Innovative and thought-provoking ideas are welcome.

---

**Founding Editor:** Mario Parisi, Buenos Aires, Argentina

**Editor in Chief:** Alicia Mattiazzi, La Plata, Argentina

## Associate Editors

**Alejandro Aiello**, La Plata, Bs. As., Argentina

**Walter Boron**, Cleveland, OH, United States

**Maria Jose Campagnole-Santos**, Belo Horizonte, MG, Brazil

**Julio Copello**, Springfield, IL, United States

**Adolfo de Bold**, Ottawa, ON, Canada

**Ana Franchi**, Ciudad Autónoma de Buenos Aires, Argentina

**Cecilia Hidalgo**, Santiago, Chile

**Daniel Ortuño-Sahagun**, Guadalajara, Jal, México

**Eduardo Rios**, Chicago, IL, United States

**Luis Sobrevia**, Santiago, Chile

## Administrative Council

**Presidents or delegates of Latin American Physiological Societies or Biological Societies**

**Ma. del Carmen Cortés Sánchez**, Puebla, Pue, México

**Paola Contreras**, Montevideo, Uruguay

**Jean-Claude Dorsainvil**, Puerto Príncipe, Haití

**Mayppee González Jardínez**, La Habana, Cuba

**Henry León**, Chía, Cund., Colombia

**Azael Paz Aliaga**, Lima, Perú

**Zully Pedroso**, Santiago, Chile

**Patricia Rocco**, Río de Janeiro, RJ, Brazil

**Martín Vila-Petroff**, La Plata, Argentina

---

## Editorial Board:

Vagner Roberto Antunes, Sao Paulo, Brazil  
Cristina Arranz, Ciudad Autónoma de Buenos Aires, Argentina  
Claudia Capurro, Ciudad Autónoma de Buenos Aires, Argentina  
Daniel Cardinali, Ciudad Autónoma de Buenos Aires, Argentina  
Marcelino Cerejido, México City, México  
Alberto Crottogini, Ciudad Autónoma de Buenos Aires, Argentina  
Osvaldo Delbono, Winston-Salem, NC, United States  
Irene Ennis, La Plata, Bs. As., Argentina  
Ariel Escobar, Merced, CA, United States  
Ludmila Firaletova, St. Petersburg, Russia  
Benjamín Florán Garduño, Ciudad de México, México  
Ana María Gomez, Chatenay-Malabry, France  
Guillermo González Burgos Pittsburg, PA, United States  
Carlos González, Lubbock, TX, United States  
Hilda Leonor González Olaya, Bucaramanga, SAN, Colombia

Sergio Gradilone, Rochester, MN, United States  
Joost Hoenderop, Nijmegen, The Netherlands  
Bredford Kerr Fuentes, Santiago, Chile.  
Cecilia Larocca, Rosario, Santa Fe, Argentina  
Elena Lascano, Ciudad Autónoma de Buenos Aires, Argentina  
Reinaldo Marín, Caracas, Venezuela  
Raúl Marinelli, Rosario, Santa Fé, Argentina  
Susana Mosca, La Plata, Bs. As., Argentina  
Cecilia Mundiña-Weilemann, La Plata, Bs. As., Argentina  
Gustavo Pérez, La Plata, Bs. As., Argentina  
Darío Protti, Sidney, NSW, Australia  
Margarita Salas, La Plata, Bs. As., Argentina  
Daniel Schulz, Gif sur Yvette, France  
Gary Sieck, Rochester, MN, United States

## Education Editorial Board

Robert G. Carroll, Greenville, NC, United States  
Matilde Said, La Plata, Bs. As., Argentina  
Roxana Troiano, Ciudad Autónoma de Buenos Aires, Argentina  
Claudia Caldiz, La Plata, Bs. As., Argentina

## Publishing Editorial Board

Carolina Caniffi, Ciudad Autónoma de Buenos Aires, Argentina  
Verónica de Giusti, La Plata, Bs. As., Argentina  
Luis Gonano, La Plata, Bs. As., Argentina  
Alejandro Orłowsky, La Plata, Bs. As., Argentina

Zully Pedroso, Santiago, Chile  
Matilde Said, La Plata, Bs. As., Argentina  
Carlos Valverde, La Plata, Bs. As., Argentina  
Alejandra Yeves, La Plata, Bs. As., Argentina

**Editorial Assistant:** María Ines Vera

---

## Preparation and Submission of manuscripts:

"Physiological Mini-Reviews" will have a maximum of 3000 words, 50 references and 3 figures. Material will be addressed to scientific people in general but not restricted to specialist of the field. For citations in the text please refer to Instructions in our webpage. Final format will be given at the Editorial Office. Most contributions will be invited ones, but spontaneous presentations are welcome. Send your manuscript in Word format (.doc or .docx) to: [pmr.alacf@gmail.com](mailto:pmr.alacf@gmail.com)

---

**Advertising:** For details, rates and specifications contact the Associate Editor at the Journal address e-mail: [pmr.alacf@gmail.com](mailto:pmr.alacf@gmail.com)

---

The "Sociedad Argentina de Fisiología" is a registered non-profit organization in Argentina. (Resol. IGJ 763-04)

# THE OLFACTORY BULB: AN IGNORED BRAIN STRUCTURE IN THE REGULATION OF CARDIOVASCULAR ACTIVITY

Luis R. Cassinotti<sup>1,#</sup>, María F. Fernández<sup>2,3,#</sup>, Sandra I. Hope<sup>2,4</sup>, Liliana G. Bianciotti<sup>3,5</sup> and Marcelo S. Vatta<sup>2,3,\*</sup>

<sup>1</sup> Kresge Hearing Research Institute, University of Michigan Medical School, Ann Arbor, MI, USA.

<sup>2</sup> Universidad de Buenos Aires, Facultad de Farmacia y Bioquímica, Cátedra de Fisiología, Buenos Aires, Argentina

<sup>3</sup> CONICET-Universidad de Buenos Aires, Instituto de Inmunología, Genética y Metabolismo (INIGEM), Buenos Aires, Argentina.

<sup>4</sup> CONICET-Universidad de Buenos Aires, Instituto de Química y Metabolismo del Fármaco (IQUIMEFA), Buenos Aires, Argentina.

<sup>5</sup> Universidad de Buenos Aires, Facultad de Farmacia y Bioquímica, Cátedra de Fisiopatología, Buenos Aires, Argentina

# Contributed equally.

\* Correspondence to: mvatta@ffyb.uba.ar

## ABSTRACT

Numerous studies have addressed the participation of the central nervous system in the physiological regulation of blood pressure and in the development and/or maintenance of hypertension. The central nervous system plays a key role in the short-term regulation of blood pressure although recent investigations also support its participation in the long-term modulation. Diverse brain regions and areas like the rostral ventrolateral medulla, the nucleus of the solitary tract, the locus coeruleus, amygdala and hypothalamus are intimately involved in the control of cardiovascular activity. Nevertheless, little is known about the role of the olfactory bulb. This mini review summarizes current knowledge regarding the participation of this telencephalic region in the regulation of cardiovascular activity in physiological and pathophysiological conditions.

**Keywords:** Olfactory bulb, cardiovascular function, depression, neuropeptides.

## RESUMEN

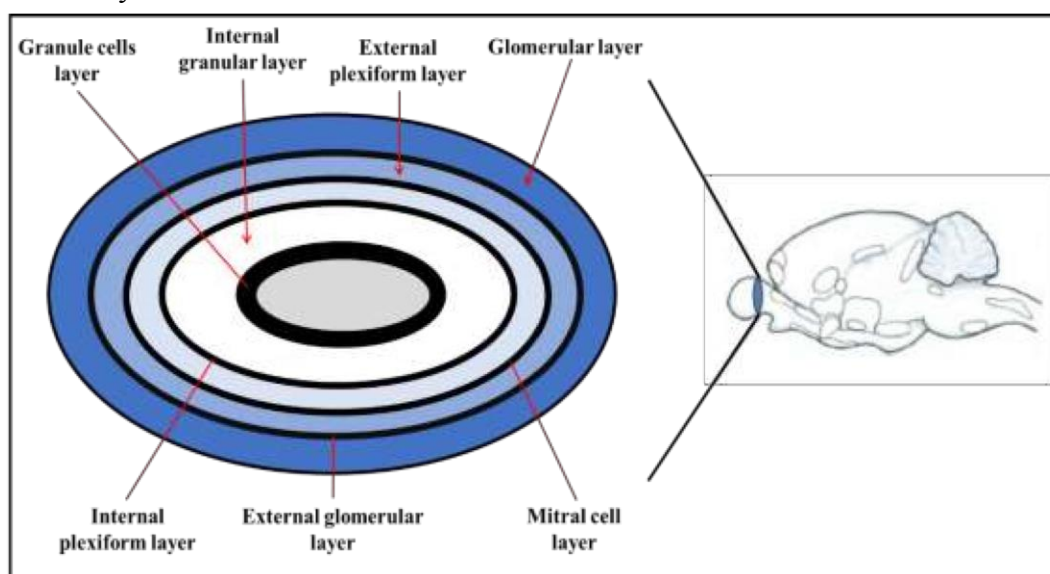
Numerosos estudios han abordado la participación del sistema nervioso central en la regulación fisiológica de la presión arterial y en el desarrollo y / o mantenimiento de la hipertensión arterial. El sistema nervioso central juega un papel clave en la regulación a corto plazo de la presión arterial, aunque investigaciones recientes apoyan su participación en la modulación a largo plazo. Diversas regiones y áreas del cerebro como la médula ventrolateral rostral, el núcleo del tracto solitario, el locus coeruleus, la amígdala y el hipotálamo están íntimamente involucradas en el control de la actividad cardiovascular. Sin embargo, poco se conoce acerca del papel del bulbo olfatorio. Esta breve revisión resume el conocimiento actual en la participación de esta región telencefálica en la regulación de la actividad cardiovascular en condiciones fisiológicas y fisiopatológicas.

**Palabras clave:** Bulbo olfatorio, función cardiovascular, depresión, neuropéptidos.

## Introduction

The olfactory bulb (OB) is a part of the forebrain located above the nasal cavity. It is the primary information processing center of the olfactory information. In rodents it constitutes 4% of the brain mass whereas in humans it is smaller since it does not rely on the sense of smell to perceive the environment [1]. The OBs (right and left) are brain structures mainly involved in the processing of the sensory inputs coming from the olfactory epithelium [2, 3, 4]. However, there are evidence to supports that this telencephalic region may be implicated in the regulation of the cardiovascular activity [5, 6]. The OBs are structures of complex organization that present several cell layers of concentric arrangement, located from outside to the inside as follows [3, 4, 7] (view Figure 1):

- Glomerular layer
- External glomerular layer
- External plexiform layer
- Mitral cell layer
- Internal plexiform layer
- Internal granular layer
- Granule cell layer

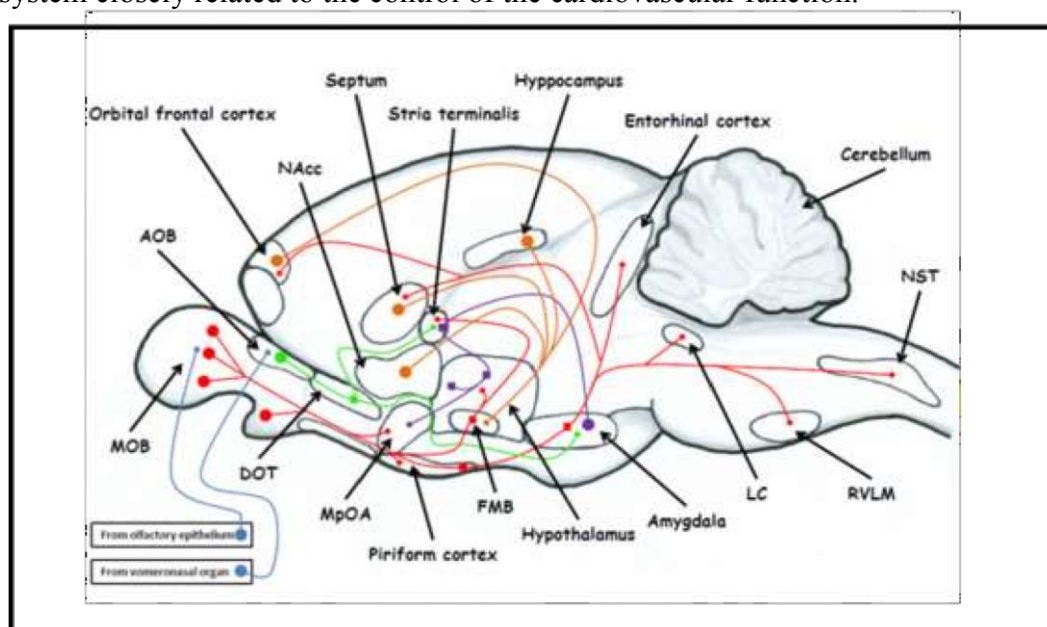


**Figure 1.** Schematic representation of the coronal section of the olfactory bulb showing the different concentric cell layers.

The glomerular zone that has different types of neurons is where the integration of sensory information occurs [3]. To discriminate among the different stimuli, inputs from the olfactory epithelium reach the main OB via the olfactory nerves, wrapped around by supporting cells that exhibit two phenotypes: Schwann cell-like or astrocyte cell-like. These glial cells are of particular interest due to their regenerative capacity, a feature that makes them target for neuronal regeneration research even though they are not typical stem cells [8, 9, 10]. When the olfactory nerves enter the OB, the sensory information is delivered through glutamatergic terminals to the lumen of the olfactory glomeruli. There the signal is processed through GABAergic and dopaminergic periglomerular interneurons, among others. Granulocytic cell projections reach this area and project through the olfactory tract via mitral and tufted cells that relay impulses from the OB to other brain regions. The projections of these cells differ not only in the target site but also in the speed of nerve impulse conduction [11]. The OB connects with different telencephalic, midbrain, diencephalic and brainstem regions, some of which are closely involved in the regulation of cardiovascular activity [12, 13]. In this sense, a relevant projection is that to the nucleus tractus solitarius, at the level of the brainstem, which is considered the primary site for the integration of visceral afferents such as those arising from the baroreflex [14, 15]. In addition, limbic system areas like the amygdala, septum, piriformis, and orbitofrontal cortex also receive inputs from the OB [4, 16].

The OB receives afferences both from the olfactory cortex and other central areas like the locus coeruleus. Noradrenergic fibers from the locus coeruleus innervate the OB, from the central cell layers decreasing the density to the periphery [17, 18]. This centripetal afference represents around 40% of the total extrinsic innervation [18] and it is crucial for the modulation of olfaction and olfactory learning. The OB also receives serotonergic afferences mainly from the nucleus of the raphe (dorsal and medial) that innervate particularly the glomerular layer. Experiments performed in deafferented animals revealed that serotonergic stimulation is relevant for olfactory learning but also as a neurotrophic agent. Likewise, cholinergic fibers arising from the horizontal arm of the diagonal band nucleus, prosencephalic basal area also reach OB and innervate mainly the deeper cell layers. These fibers would be involved in the OB neuronal plasticity and the regulation of cell survival [19, 20, 21].

Cortical areas related to olfaction also project to the OB. There is a feedback innervation since brain areas reached by the olfactory nerves send projections back, so the neuronal terminals that come from the olfactory cortex to the OB may arise from the anterior olfactory nucleus, tapeworm tecta, piriform cortex, cortical tonsillar nucleus, and the nucleus of the lateral olfactory tracts. When entering the OB, they selectively release neurotransmitters that act on specific groups of neurons [4, 16, 22]. The sensory input to the main OB triggered by odors arises from the olfactory epithelium and send projections to the piriformis, prefrontal cortex, nucleus tractus solitarius, amygdala and the hypothalamus [23, 24]. The major input to the accessory OB (absent in humans) comes from the vomeronasal organ (vestigial or absent in adult humans) that is involved in the detection of pheromones; the output is sent mainly to the amygdala, nucleus tractus solitarius and the accessory olfactory nuclei [25, 26, 27]. The OB efferences originate in the tufted neurons and the mitral cells; the impulses originated in the tufted neurons propagate rapidly to the olfactory to the external and posteroventral part of the olfactory nucleus, the olfactory tubercle and the ventrorostral amygdala whereas those from the mitral cells propagate at a lower speed mainly to the olfactory tubercle (cortical portion), the dorsal anterior olfactory nucleus, the anterior and posterior dorsal piriformis cortex, the lateral entorhinal cortex and the anterior and posterolateral amygdala [3, 4, 7, 11, 22]. Figure 2 shows the complex neuronal circuits between OB and different areas and nuclei of the central nervous system closely related to the control of the cardiovascular function.



**Figure 2.** Diagram of a sagittal section of a rat brain showing the olfactory bulb interworking with areas and nuclei with implications in the central regulation of cardiovascular system. References: axonic projection from (●→) or to (→●) distinct area/nuclei are represented in different colours; main olfactory bulb (MOB); accessory olfactory bulb (AOB); dorsal olfactory tract (DOT); medial preoptic area (MpOA); forebrain medial bundle (FMB); locus coeruleus (LC); rostral ventrolateral medulla (RVLM); nucleus of the solitary tract (NST); nucleus accumbens (NAcc)



## **OB and cardiovascular function**

Diverse studies in experimental animals reveal an association among the sense of smell, the autonomic balance, and cardiovascular physiology [6, 28, 29, 30]. Conscious rats exposed to smoke show changes in blood pressure, breathing and sympathetic activity [31, 32]. It was reported that the changes in vascular and heart physiology correlate with changes in the neurochemistry of various neurotransmitters including norepinephrine in the OB [12, 33].

Nakamura and Hayashida showed that the changes in the cardiovascular response of conscious rats exposed to smoke resulted from both sympathetic and parasympathetic activation [31]. Furthermore, the baroreflex function is likely modulated by parasympathetic firing. Nevertheless, the authors leave open the possibility that an emotional response may be involved [31]. Aromatherapy-based studies in anesthetized rats showed that olfactory stimulation for 10 min with scent of grapefruit oil increases renal sympathetic nerve activity and blood pressure whereas it reduces gastric vagal nerve activity [34]. Furthermore, olfactory stimulation with limonene, a major component of grapefruit oil, also shows similar results in the same experimental model [34]. However, stimulation with lavender oil and its active component linalol, has opposite effects, it reduces renal sympathetic activity and blood pressure while increasing gastric vagal nerve activity [35]. These findings reveal that different essential oils with distinct active component show a differential response on blood pressure and autonomic activity.

Double-blind and randomized aromatherapy-based studies were also performed in humans, that have a weak sense of smell as compared to rodents. Angelucci and coworkers compiled reports in the literature regarding the effect of various fragrances like lavender, lemon, and patchouli among others on the autonomic balance and blood pressure [36]. Conclusion were rather controversial, since various reports failed to find a correlation. In this sense, Kiecolt-Glaser and coworkers compared the stimulation with lemon aroma and lavender relaxant with odorless water in 57 individuals exposed to stressful stimuli like low temperatures, the peeling of an adhesive tape on the skin, etc. and the results were not conclusive. These authors showed that inhaling lemon oil improves positive mood and also increases norepinephrine release, however, it does not present any other physiological or health-related benefits. Furthermore, both lemon and lavender appeared to depress delayed hypersensitivity responses to *Candida* relative to water (control group), suggesting that the immunomodulatory effects of these odors were negative, at least for this aspect of the immune response [37]. Other reports provided data on the relevance of subjectivity and prediction of the expected response to inhaled essential oils. In this sense, these authors conclude that the perceived physiological changes in blood pressure, heart rate and heart rate variability only reflect changes in alertness, but do not correlate with real changes in the respective vegetative states [38]. Therefore, the role of olfaction in cardiovascular activity is still a matter of debate, although diverse avenues have elucidated how these functions would be linked.

Olfactory disturbances generally lead to poor food intake choices, reduced appetite, and eventually weight loss, malnutrition, impaired immune response, and worsening of illnesses. Patients with an altered sense of smell use higher amounts of sugar and salt to enhance the flavors thus leading to health deterioration and enhanced risk of diabetes and hypertension. These patients usually increase the use of table salt and exhibit a deep craving for salty foods following olfaction loss but do not have any consistent taste abnormality [39].

Several works in patients reveal a strong link between depression and cardiovascular diseases as well as between depression and the OB [40, 41, 42]. Depression may affect the pathogenesis of cardiovascular diseases. In fact, patients with major depression have altered hemodynamic parameters. The prevalence of depression in patients with cardiovascular diseases ranges from 15 to 20%. In those with acute myocardial infarction is 19.8% (31.1% had previous clinically significant depression) whereas in hypertensive patients is approximately 40.1%. The incidence of depression is very high in hypertensive patients, 63.4% and 36.6% in women and men, respectively [42].

Bilateral bullectomy is a well-established and accepted model of depression that exhibits modifications in sympathetic activity and cardiovascular function and has been used to screen

different antidepressant agents [5, 12, 43]. Rats with bilateral bulbectomy show increased exploratory behavior, hyperactivity, and decreased sexual behavior as well as changes in temperature, endocrine and immune responses, and cardiovascular physiology [5, 12, 43]. Some authors consider that the cardiovascular responses are related to variations in the autonomic nervous system regulation [44, 45]. The changes following bulbectomy are associated with alterations in one or more neurotransmitters like norepinephrine, acetylcholine, serotonin, GABA and glutamate [12, 43]. In addition, it was reported that the integrity of the OB is necessary for the brain to generate a normal sympathetic excitatory response to a series of physiological stimuli, including the baroreflex [5]. The ablation of OB produces the modification in the neurochemistry of different neurotransmitters in various regions and areas of the central nervous system [46, 47]. Pioneering investigations by Allen showed that olfactory stimulation in mammals is accompanied by changes in respiration and blood pressure [48].

Works from our laboratory showed for the first time that noradrenergic activity is enhanced in the OB of DOCA-salt hypertensive rats. Norepinephrine content as well tyrosine hydroxylase (the enzyme that catalyzes the rate limiting step in catecholamine biosynthesis) activity are significantly elevated [33]. Increased catecholamine biosynthesis correlates with enhanced norepinephrine neuronal release in the OB of DOCA-salt rats [33]. Although the OB does not have noradrenergic neuron bodies, it receives fibers from the locus coeruleus that release norepinephrine [18, 49]. Previous studies showed that cholinergic and/or noradrenergic stimulation of noradrenergic neurons in the locus coeruleus of normotensive animals increases norepinephrine content in the OB [50]. Norepinephrine release in the OB induces changes in the reproductive and exploratory behavior, the detection and sensitivity to odors and blood pressure [5, 51, 52, 53]. Another relevant finding is that the activity and the plasma membrane expression of the neuronal norepinephrine transporter are decreased in the OB of DOCA-salt hypertensive animals [33]. Taken together these findings imply that norepinephrine turnover is enhanced and further support the hypothesis that the OB is a sympathoexcitatory region given that the release of norepinephrine elevates blood pressure [5, 51]. Other authors suggest that the imbalance of the neuronal norepinephrine transporter contributes to the development of hypertension and other cardiovascular diseases [54, 55, 56, 57].

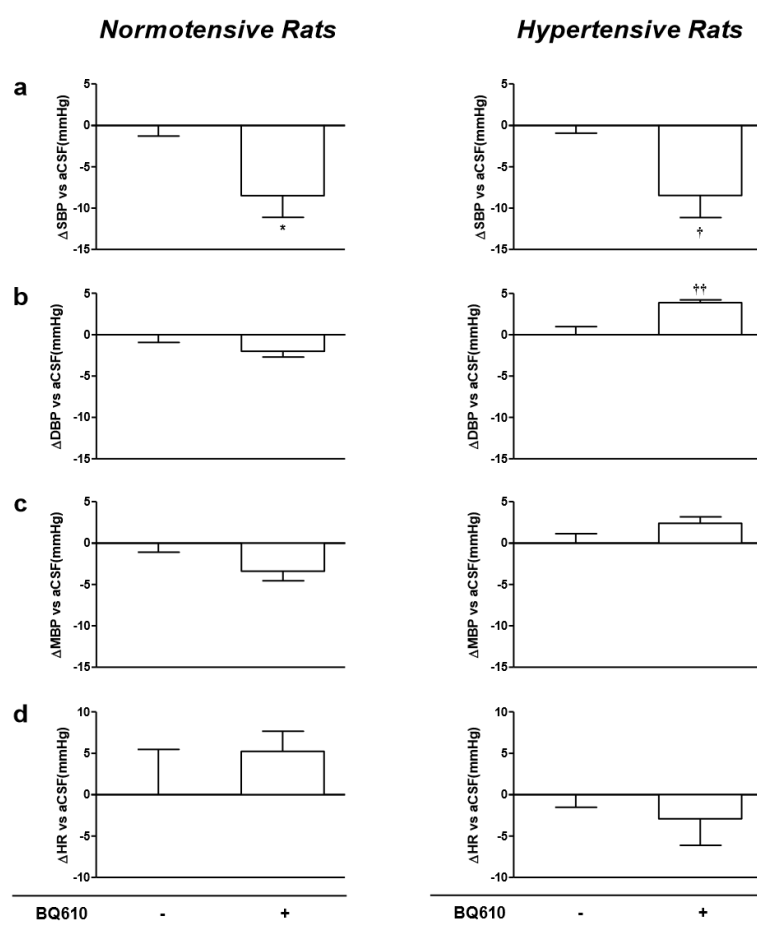
An unexpected finding showed by Abramoff et al in the OB of DOCA-salt rats is the existence of an asymmetry in noradrenergic activity, given that the right OB and not the left OB exhibits the changes in noradrenergic transmission [33]. The pathophysiological significance of this asymmetry in this animal model is presently unknown. Nevertheless, some authors propose that the right hemiportion of other regions of the central nervous system like the hypothalamus has greater impact the regulation of cardiovascular function [58, 59].

Vasoactive peptides like angiotensin II, natriuretic peptides, bradykinin, and endothelin (ET) are expressed in the OB and changes in their function have been related to cardiovascular impairment. In the OB of spontaneously hypertensive rats, altered properties and function of the natriuretic peptide receptor A (NPR-A) was reported suggesting that it may be implicated in the pathogenesis of hypertension [60]. Studies from our laboratory show changes in the endothelinergic system in this telencephalic region in DOCA-salt hypertensive rats. We showed increased ET type A receptor (ET<sub>A</sub>) and diminished ET type B receptor (ET<sub>B</sub>) expression in the OB of hypertensive animals. Furthermore, confocal microscopy studies showed that ET<sub>A</sub> receptors colocalize with tyrosine hydroxylase positive neurons, and both ET receptors are increased in these catecholaminergic neurons. These findings show a clear association in the OB between changes in the endothelinergic and catecholaminergic systems and salt dependent hypertension [61].

In previous works we reported the role of the central endothelinergic system in the maintenance of blood pressure in DOCA-salt hypertension through the ET<sub>A</sub> receptor activation. The acute intracerebroventricular infusion of an ET<sub>A</sub> antagonist or a specific ET<sub>B</sub> agonist significantly attenuates blood pressure and other hemodynamic parameters [61, 62]. Normotensive animals also exhibit decreased hemodynamic parameters, but such reduction results considerably lower. These findings show that DOCA-salt hypertensive animals have a higher brain endothelinergic tone mediated by ET<sub>A</sub>

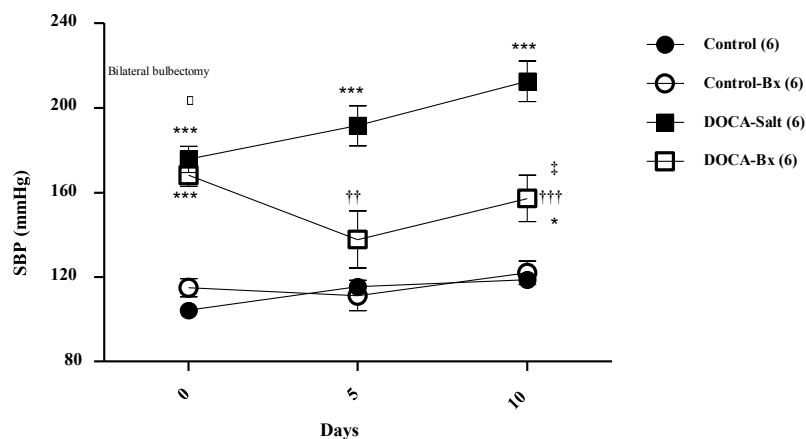
receptor activation. These observations correlate with changes in noradrenergic transmission at the level of the OB. The hemodynamic modifications are compatible with observations in other brain sympathoexcitatory areas. In this sense, it was reported that BQ610 (ET<sub>A</sub> antagonist) or IRL1620 (ET<sub>B</sub> selective agonist) acutely applied to the brain (1 h) significantly reduces the activity of tyrosine hydroxylase activity and the expression of its phosphorylated forms (protein and mRNA) [61, 62]. Moreover, chronic infusion of either BQ610 or IRL1620 (7 days) to DOCA-salt animals reduces systolic blood pressure without changes in the heart rate. These results show that the brain ET<sub>A</sub> receptor is coupled to a pressor response whereas the ET<sub>B</sub> receptor would counteract this response [63].

The catecholaminergic response in the OB shows that the chronic treatment of hypertensive rats with an ET<sub>A</sub> antagonist (BQ610) reduces tyrosine hydroxylase activity in the right hemoportion of the OB without changes in the left OB [63]. However, ET<sub>B</sub> activation, modifies neither the activity nor the expression of tyrosine hydroxylase (unpublished data). Recent findings from our laboratory show that the acute administration of BQ610 into the OB ventricle, decreases systolic blood pressure in hypertensive rats but elicits no changes in normotensive animals (Figure 3).



**Figure 3.** Effects of BQ-610 administration into the olfactory bulb of Control (normotensive) and DOCA-Salt hypertensive animals. \*, \*\*: p<0.05 and 0.01 vs Control; †, ††: p<0.05 and 0.01 vs DOCASalt. Number of animals: 4 per experimental group.

In another study normotensive and DOCA-salt hypertensive rats were subjected to bilateral bulbectomy at week 5. We show that systolic blood pressure is significantly reduced in hypertensive rats as compared with sham-operated animals. However, no changes are observed in normotensive rats with bilateral bulbectomy (Figure 4). These findings support the role of the OB in the maintenance of blood pressure elevation in salt dependent hypertension.



**Figure 4.** Effects of bilateral bulbectomy (Bx) on systolic blood pressure. \*\*\*, \*:  $p < 0.001$  and  $0.05$  vs Control; †††, ††:  $p < 0.001$  and  $0.01$  vs DOCA-Salt; ‡:  $p < 0.05$  vs Control-Bx.

### Summary

The association between the OB and mood disorders is well documented, as well as a bidirectional relationship between depression and cardiovascular diseases. Likewise, there is a close connection between the OB and the limbic system, and the areas related to the control of cardiovascular function. In this brief review, we summarized the current knowledge that support the existence of a relationship between the OB and the regulation of cardiovascular function, with focus on hypertension. The OB would be part of a complex puzzle that is the brain regulation of the cardiovascular function, which is not presently completely understood. Several questions remain regarding the OB and cardiovascular regulation: - Is the OB a main or a supporting actor? - What are the pathways and neurotransmitters involved? - What is the precise role of other vasoactive peptide systems expressed in the BO in the regulation of cardiovascular function?

### Fundings

ANPCyT grant PICT 2015-2030 (MSV), UBA grant UBACyT 20020100100695 (MSV and LGB) and CONICET grant PIP 11220170100866CO (LGB).

## References

- [1] **Cain DP.** The role of the olfactory bulb in limbic mechanisms. *Psychol Bull.* 1974; 81: 654-671.
- [2] **Lowe G.** Olfactory bulb: Synaptic organization. In eLS. Chichester: Jon Wiley & Sons; 2013: a0020289.
- [3] **Nagayama S, Homma R, Imamura F.** Neuronal organization of olfactory bulb circuits. *Front Neural Circuits* 2014; 8: 1-19.
- [4] **Ennis M, Puche AC, Holy T, Shipley MT.** The olfactory system: The rat system, 4<sup>th</sup> Ed. Amsterdam, Netherlands, Elsevier; 2015: 761-803.
- [5] **Moffit J, Grippo AJ, Holmes PV, Johnson AK.** Olfactory bulbectomy attenuates cardiovascular sympathoexcitatory reflex in rats. *Am J Physiol Heart Circ Physiol.* 2002; 283: H2575-H2583.
- [6] **Nagoi K, Nijima A, Horii, Shen J, Tonida M.** Olfactory stimulatory with grapefruit and lavender oils change autonomic nerve activity and physiology function. *Auton Neurosci.* 2014; 185: 29-35.
- [7] **Lodovichi C.** Topographic organization in the olfactory bulb. *Cell Tis Res.* 2021, 383: 457-472.
- [8] **Barnett SC, Roskams AJ.** Olfactory ensheathing cells. Isolation and culture from the rat olfactory bulb. *Meth Mol Biol.* 2002; 198: 41-48.
- [9] **Reshamwala R, Shah M, St John J, Ekberg S.** Survival and integration of transplanted olfactory ensheathing cells are crucial for spinal cord injury repair: Insights from the last 10 years of animal model studies. *Cell Transp.* 2019; 28: 1325-1595.
- [10] **Yue Y, Xue Q, Yang J, Li X, Mi Z, Zhao G, Zhang L.** Wnt-activated olfactory ensheathing cells stimulate neural stem cell proliferation and neuronal differentiation. *Brain Res.* 2020; 1735: 146726.
- [11] **Igarashi KM, Ieki N, An M, Yamaguchi Y, Nagayama S, Kobayakawa K, Kobayakawa R, Tanifuyi M, Sakano H, Chen WR et al.** Parallel mitral and tufted cell pathways route distinct odor information to different targets in the olfactory cortex. *J Neurosci.* 2012; 32: 7970-7985.
- [12] **Kelly JP, Wrynn AS, Leonard BE.** The olfactory bulbectomized rat as a model of depression: an update. *Pharmacol Ther.* 1997; 74: 299-316.
- [13] **Yokosura M.** Histological properties of the glomerular layer in the mouse accessory olfactory bulb. *Exp Anim.* 2012; 61: 3-24.
- [14] **Neafsey EJ, Hurlley-Gius KM, Arvanitis D.** The topographical organization of neuron in the rat frontal insular and olfactory cortex projecting to the solitary nucleus, olfactory bulb, periaqueductal gray and superior colliculus. *Brain Res.* 1986; 377: 261-270.
- [15] **Pilowsky PM, Goodchild AK.** Baroreceptor reflex pathways and neurotransmitters: 10 years on. *J Hypertens.* 2002; 20: 1675-1688.
- [16] **Mori K, Sakano H.** Olfactory circuitry and behavioral decisions. *Ann Rev Physiol.* 2021; 83: 24.1-24.26.
- [17] **Matsutani S, Yamamoto N.** Centrifugal innervation of the mammalian olfactory bulb. *Anat Sci Int.* 2008; 83: 218-227.
- [18] **Linster C, Nai Q, Ennis M.** Nonlinear effects of noradrenergic modulation of olfactory bulb function in adult rodent. *J Neurophysiol.* 2011; 105: 1432-1443.
- [19] **Cooper-Kuhn CM, Winkler J, Kuhn HG.** Decreased neurogenesis after cholinergic forebrain lesion in the adult rat. *J Neurosci Res.* 2004; 77: 155-165.
- [20] **Omais S, Jaafar L, Ghanem N.** “Till death do us Part”. A potential irreversible link between aberrant cell cycle control and neurodegeneration in the adult olfactory bulb. *Front Neurosci.* 2018; 12: 144.



- [21] **Lihbrecht S, Van der Haute C, Welkenhuysen M, Braeken D, Haesler S, Baekelandt V.** Chronic chemogenetic stimulation of the anterior olfactory nucleus reduces newborn neuron survival in the adult mouse olfactory bulb. *J Neurochem*, 2021; 158: 1186-1198.
- [22] **Brunert D, Rothermel M.** Extrinsic neuromodulation in the rodent olfactory bulb. *Cell Tiss Res*. 2021; 507-524.
- [23] **Padmababhan K, Osakada F, Tarabrina A, Kizer E, Callaway EM, Cage FH, Sejnowski TJ.** Centrifugal inputs to the main olfactory bulb revealed through whole brain circuits mapping. *Front Neuroanat*. 2019; 12: 115.
- [24] **Zepilli S, Ackels T, Attey R, Klimpert N, Ritola KD, Boeng S, Crombach A, Schaefer AT, Fleischmann A.** Molecular characterization of projection neuron subtypes in the mouse olfactory bulb. *Elife* 2021; 10: e65445.
- [25] **Kunkhyen T, Mc Carthy EA, Korzan WJ, Doctor D, Han X, Baum MJ, Cherry JA.** Optogenetic activation of accessory olfactory bulb input to the forebrain differentially modulates investigation of opposite versus same-sex urinary chemo signals and stimulates maturing in male mice. *eNeuro* 2017; 4: ENEURO.0010-17.
- [26] **Mc Carthy EA, Kunkhyen T, Korzan WJ, Naik A, Maqsdulu A, Cherry JA, Baum JJ.** A comparison of the effects male pheromone priming and optogenetic inhibition of accessory olfactory bulb forebrain inputs on the sexual behavior of estrous female mice. *Horm Behav*. 2017; 89: 104-112.
- [27] **Smith TD, Bhatnagar KP.** Anatomy of the olfactory system. In: Doty RL, ed. *Handbook of Clinical Neurology-Smell and taste*. Amsterdam, Netherlands: Elsevier; 2019: Vol 164: 17-28.
- [28] **Kuga N, Nakayama R, Shikano Y, Nishimura Y, Okonogi T, Ikegaya Y, Sasaki T.** Sniffing behavior-related changes in cardiac and cortical activity in rats. *J Physiol*. 2019; 597.21: 5295-5306.
- [29] **Lee Sp, Wu WY, Hsiao JK, Zhou JH, Chang HH, Chien CT.** Aromotherapy: Activating olfactory calcium-sensing receptors impairs renal hemodynamics via sympathetic nerve-mediated vasoconstriction. *Acta Physiol*. 2019; 225: e13180.
- [30] **Tonacci A, Dilleci L, Di Mambro I, Marangoni R, Sanmartin C, Venturi F.** Wearable sensors for assessing the role of olfactory training are the autonomic response to olfactory stimulation. *Sensors* 2021; 21: 770.
- [31] **Nakamura T, Hayashida Y.** Autonomic cardiovascular responses to smoke exposure in conscious rats. *Am J Physiol*. 1992; 262: R738-R745.
- [32] **Houdi AA, Dowell RT, Diana JN.** Cardiovascular responses to cigarette smoke exposure in restrained conscious rats. *J Pharmacol Exp Ther*. 1995; 275: 646653.
- [33] **Abramoff T, Guil MJ, Morales VP, Hope SI, Soria C, Bianciotti LG, Vatta MS.** Enhanced asymmetrical noradrenergic transmission in the olfactory bulb of deoxycorticosterone acetate salt hypertensive rats. *Neurochem Res*. 2013; 38: 2063-2071.
- [34] **Tanida M, Nijjima A, Shen J, Nakamura T, Nagai K.** Olfactory stimulation with scent of essential oil grapefruit affects autonomic neurotransmission and blood pressure. *Brain res*. 2005; 1058: 44-55.
- [35] **Tanida M, Nijjima A, Shen J, Nakamura T, Nagai K.** Olfactory stimulation of lavender oil affects autonomic neurotransmission and blood pressure in rats. *Neurosci Lett*. 2006; 398: 155-160.
- [36] **Angelucci FL, Silva VV, Dal Pizzol C, Spir LG, Praes CEO, Maibach H.** Physiological effect of olfactory stimuli inhalation in humans: an overview. *Int J Cosmet Sci*. 2014; 36: 117-123.
- [37] **Kiecott-Glaser JK, Graham JE, Malarkey WB, Lemeshow S, Glaser R.** Olfactory influences on mood and autonomic, endocrine, and immune function. *Psychoneuroendocrinol*. 2008; 33: 328-339.

- [38] **Köteles F, Babulka P.** Role of expectations and pleasantness of essential oils in their acute effects. *Acta Physiol Hung.* 2014; 101: 329-340.
- [39] **Henkin RI.** Effects of smell loss (hyposmia) on salt usage. *Nutrition* 2014; 30: 690-695.
- [40] **Yuan TF, Slotnick BM.** Roles of olfactory system dysfunction in depression. *Prog Neuro-Psychopharmacol Biol Psych.* 2014; 54: 26-30.
- [41] **Cray I, Hummel T.** Olfaction as marker for depression. *J Neurol.* 2017; 264: 631-638.
- [42] **Zhang Y, Chen Y, Ma L.** Depression and cardiovascular disease in elderly: Current understanding. *J Clin Neurosci.* 2018; 47: 1-5.
- [43] **Song C, Leonard BE.** The olfactory bulbectomized rat as a model of depression. *Neurosci Biobehav Rev.* 2005; 29: 627-647.
- [44] **Grippe AJ, Johnson AK.** Stress, depression and cardiovascular dysregulation: a review of neurobiological mechanisms and the integration of research from preclinical disease model. *Stress* 2009; 12: 1-21.
- [45] **Grippe AJ, Trahanas DM, Zimmerman RR, Porges SW, Carter CS.** Oxytocin protect against negative behavioral and autonomic consequences of long-term social isolation. *Psychoneuroendocrinol.* 2009; 34: 1542-1553.
- [46] **Takahashi K, Nakagawasai O, Nemoto W, Kadota S, Isono J, Odeira T, Sakuna W, Arai Y, Tadano T, Ta-No K.** Memantine ameliorates depressive-like behavior by regulating hippocampal cell proliferation and neuroprotection in olfactory bulbectomized mice. *Neuropharmacol.* 2018; 137: 141-155.
- [47] **Thakare VN, Patil RR, Suralkar AA, Valmik DD, Patel BM.** Protocetechuic acid attenuate depressive-like behavior in olfactory bulbectomized rat model: behavioral and neurochemical investigations. *Metab Brain res.* 2019; 34: 775787.
- [48] **Allen WF.** A comparative study of the olfactory and trigeminal reflex elicited by various vapors in different mammals. *J Washington Acad Sci.* 1936; 26: 466473.
- [49] **Horie S, Kiyokage E, Hayashi S, Inoue K, Sohn J, Hioki H, Furuta T, Toida K.** Structural basis for noradrenergic regulation of neural circuits in the mouse olfactory bulb. *J Comp Neurol.* 2021; 529: 2189-2208.
- [50] **El-Etri MM, Ennis M, Griff ER, Shipley MT.** Evidence for cholinergic regulation of basal norepinephrine release in the olfactory bulb. *Neuroscience* 1999; 93: 611-617.
- [51] **Shiba K, Machida T, Uchida S, Hotta H.** Sympathetic neural regulation of olfactory bulb blood pressure flow in adult and aged rats. *Auton Neurosci,* 200; 147: 75-79.
- [52] **Escanilla O, Arrellanos A, Karnow A, Ennis M, Linster C.** Noradrenergic modulation thresholds in the olfactory bulb. *Eur J Neurosci.* 2010; 32: 458-468.
- [53] **Alves de Souza M, Szawka RE, Centenaro LA, Diehl LA, Lucion AB.** Prenatal stress produces sex differences in male odor preference. *Physiol Behav.* 2012; 105: 850-855.
- [54] **Schroeder C, Jordan J.** Norepinephrine transporter function and human cardiovascular disease. *Am J Physiol Heart Circ Physiol.* 2012; 303: H1273H1282.
- [55] **Shanks J, Manou-Stothopoulou S, Lu CJ, Paterson DJ, Herring N.** Cardiac sympathetic dysfunction in the pre-hypertensive spontaneously hypertensive rats. *Am J Physiol Heart Circ Physiol.* 2013; 305: H980-H986.
- [56] **Wehrwein EA, Noutny M, Swain GM, Parker LM, Esfahanian M, Spitsbergen JM, Habecker BA, Kreulen DL.** Regional changes in cardiac and stellate ganglion norepinephrine transporter in DOCA-salt hypertension. *Auton Neurosci.* 2013; 179: 99-107.
- [57] **Eikelis N, Marques FZ, Hering D, Marusic P, Head GA, Walton AS, Lambert EA, Esler MD, Sari CI, Schlaich MP et al.** A polymorphism in the noradrenaline transporter gene is

- associated with increased blood pressure in patients with resistant hypertension. *J Hypertens.* 2018; 36: 1571-1577.
- [58] **Peliky Fontes AA, Limborco Filho M, Santos Machado NL, Amorin de Paula C, Souza Cordeiro LM, Xavier CH, Ribeiro Marins F, Henderson L, Macefield VC.** Asymmetric sympathetic output: The dorsomedial hypothalamus as a potential link between emotional stress and cardiac arrhythmias. *Auton Neurosci.* 2017; 207: 22-27.
- [59] **Segarra AB, Prieto I, Martinez-Cañamero M, Ramírez-Sanchez M.** Is there a link between depression, neurochemical asymmetry and cardiovascular function. *AIMS Neurosci.* 2020; 7: 360-372.
- [60] **Woodard GE, Zhao J, Rosado JA, Brown J.** Differences between natriuretic peptide receptor in the olfactory bulb and hypothalamus from spontaneously hypertensive rat brain. *Neurosci Res.* 2003; 47: 421-429.
- [61] **Guil MJ, Schöller MI, Cassinotti LR, Biancardi VC, Pitra S, Bianciotti LG, Stern JE, Vatta MS.** Role of endothelin type A receptor on catecholamine regulation in the olfactory bulb of DOCA-salt hypertensive rats: Hemodynamics implication. *BBA – Mol Basis Dis.* 2019; 1865: 165527.
- [62] **Guil MJ, Soria C, Seijas M, Bianciotti LG, Vatta MS.** Central endothelin ET<sub>B</sub> receptor activation reduces blood pressure and catecholaminergic activity in the olfactory bulb of deoxycorticosterone acetate-salt hypertensive rats. *Eur J Pharmacol.* 2020; 885: 173543.
- [63] **Cassinotti LR, Guil MJ, Schöller MI, Navarro MP, Bianciotti LG, Vatta MS.** Chronic blockade of brain endothelin receptor type A (ET<sub>A</sub>) reduces blood pressure and prevents catecholaminergic activity in the right olfactory bulb of DOCA-salt hypertensive rats. *Int J Mol Sci.* 2018; 19: 660.

## ABOUT AUTHORS



**Luis R. Cassinotti, PhD** is a postdoctoral fellow at Kresge Hearing Research Institute, University of Michigan Medical School. He obtained his PhD in Biochemistry centered on cardiovascular physiology and pathophysiology field at the University of Buenos Aires in 2018. Dr. Cassinotti thesis work assessed the role of the endothelin receptors on central regulation of the tyrosine hydroxylase and its consequences on blood pressure in DOCA-salt hypertensive rats. In 2018 he joined Kresge Hearing Research Institute at the University of Michigan Medical School as a postdoctoral fellow following a career as an inner ear neuroscientist. Currently, Dr. Cassinotti research interest focus on the molecular and cellular mechanisms of age-related hearing loss, hidden hearing loss and on the importance of myelination in the peripheral auditory nerve. In the past 4 years he has contributed to the publication of several peer-reviewed research articles and reviews.



**María F. Fernández** is a CONICET Doctoral Scholar at the Institute of Immunology, Genetics and Metabolism (INIGEM, UBA-CONICET) and teaching assistant at the Physiology Department of the Faculty of Pharmacy and Biochemistry, University of Buenos Aires. In 2017, she obtained her Bachelor's degree in Genetics at the Faculty of Exact, Chemical and Natural Sciences of the University of Morón. Her doctoral work focuses on the participation of the central endothelinergic system in the development of cardiac hypertrophy in the DOCA-salt hypertension.



**Sandra Ingrid Hope PhD** is Teaching Assistant at the University of Buenos Aires. She obtained a PhD in Physiology at the same University. Research interests focus on the regulation of the norepinephrine transporter by endothelins in the central nervous system and the underlying mechanisms in physiological and pathophysiological conditions.



**Liliana G. Bianciotti PhD** is Director of the Institute of Immunology, Genetics and Metabolism (INIGEM-UBA-CONICET), Principal Researcher of National Council for Scientific and Technical Research (CONICET) and Pathophysiology Professor at the School of Pharmacy and Biochemistry of the University of Buenos Aires. Research interests center on the role of natriuretic peptides and endothelins in health and disease. Latest publications in peer review international journals address the role of atrial natriuretic peptide in the early events that trigger acute pancreatitis and the participation of endothelins in salt dependent hypertension.



**Dr. Marcelo Vatta** obtained both a MS in Biochemistry and PhD degree (Physiology) from the School of Pharmacy and Biochemistry at the University of Buenos Aires (UBA), Argentina. He completed postdoctoral studies at the University of Ottawa Heart Institute, Canada, under the supervision of Dr. Adolfo J. De Bold. Currently, Dr. Vatta is an Associate Professor of Physiology at the School of Pharmacy and Biochemistry, UBA, and Principal Researcher of the National Council for Scientific and Technical Research (CONICET) at the Institute of Immunology, Genetics and Metabolism where he is the Head of the Cardiovascular Physiology